

Data Path : Z:\pestpcbsrv\HPCHEM1\ECD_O\Data\P0042225\
 Data File : P0110609.D
 Signal(s) : Signal #1: ECD1A.ch Signal #2: ECD2B.ch
 Acq On : 22 Apr 2025 18:20
 Operator : YP/AJ
 Sample : Q1848-01
 Misc :
 ALS Vial : 19 Sample Multiplier: 1

Instrument :
 ECD_O
ClientSampleId :
 RBR200027

Manual Integrations
APPROVED

Reviewed By :Yogesh Patel 04/23/2025
 Supervised By :mohammad ahmed 04/24/2025

Integration File signal 1: autoint1.e
 Integration File signal 2: autoint2.e
 Quant Time: Apr 23 07:00:05 2025
 Quant Method : Z:\pestpcbsrv\HPCHEM1\ECD_O\methods\P0041025.M
 Quant Title : GC EXTRACTABLES
 QLast Update : Fri Apr 11 02:12:41 2025
 Response via : Initial Calibration
 Integrator: ChemStation

Volume Inj. : 2 µl
 Signal #1 Phase : ZB-MR1 Signal #2 Phase: ZB-MR2
 Signal #1 Info : 30Mx0.32mmx 0.50µ Signal #2 Info : 30M x 0.32mm x 0.25µm

Compound	RT#1	RT#2	Resp#1	Resp#2	ng/ml	ng/ml

System Monitoring Compounds						
1) SA Tetrachlo...	3.684	3.683	174.1E6	96316019	19.895	19.303
2) SA Decachlor...	8.729	8.683	124.1E6	34525740	15.719m	17.936m
Target Compounds						
26) L6 AR-1254-1	5.583	5.564	211.0E6	113.8E6	378.150	377.557
27) L6 AR-1254-2	5.732	5.712	136.8E6	73981311	281.689	279.507
28) L6 AR-1254-3	6.137	6.113	291.3E6	150.0E6	371.925	371.946m
29) L6 AR-1254-4	6.367	6.341	157.1E6	79952265	322.128	348.053
30) L6 AR-1254-5	6.786	6.758	354.6E6	179.8E6	505.909	541.077

(f)=RT Delta > 1/2 Window (#)=Amounts differ by > 25% (m)=manual int.

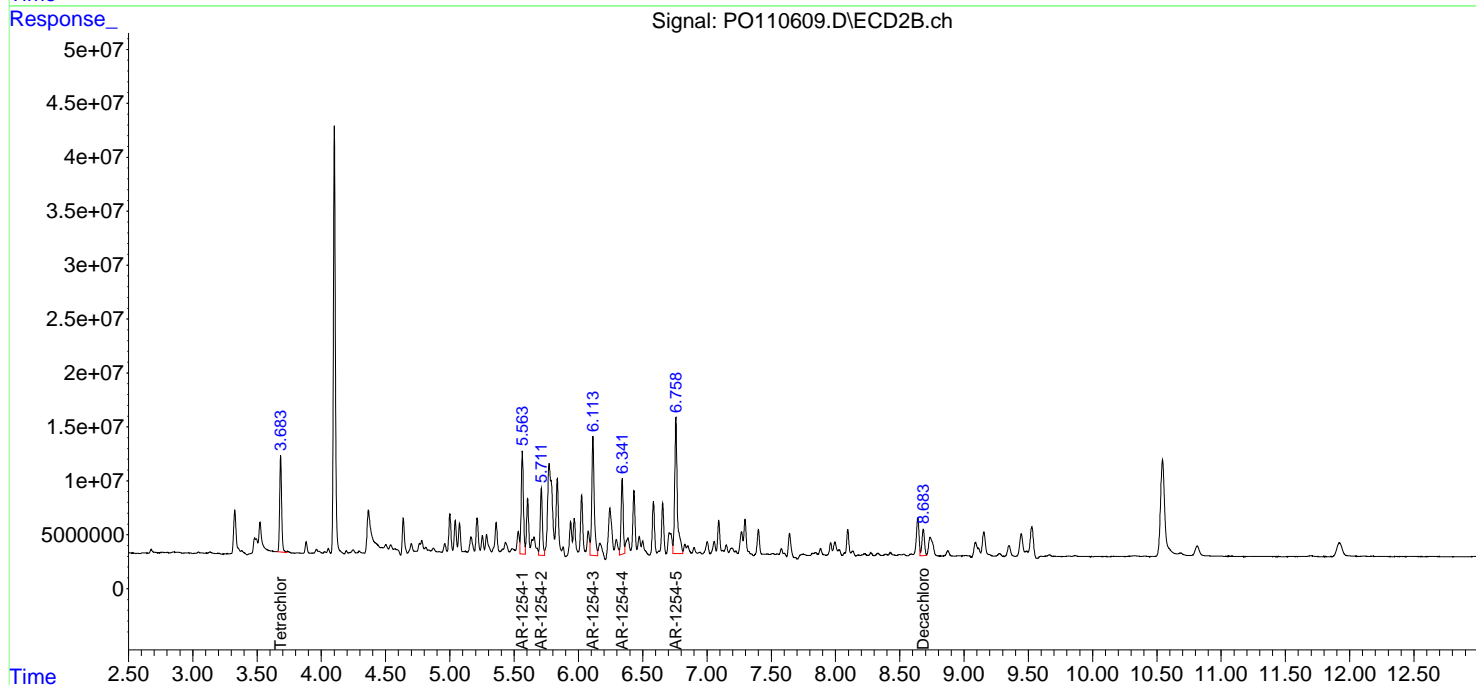
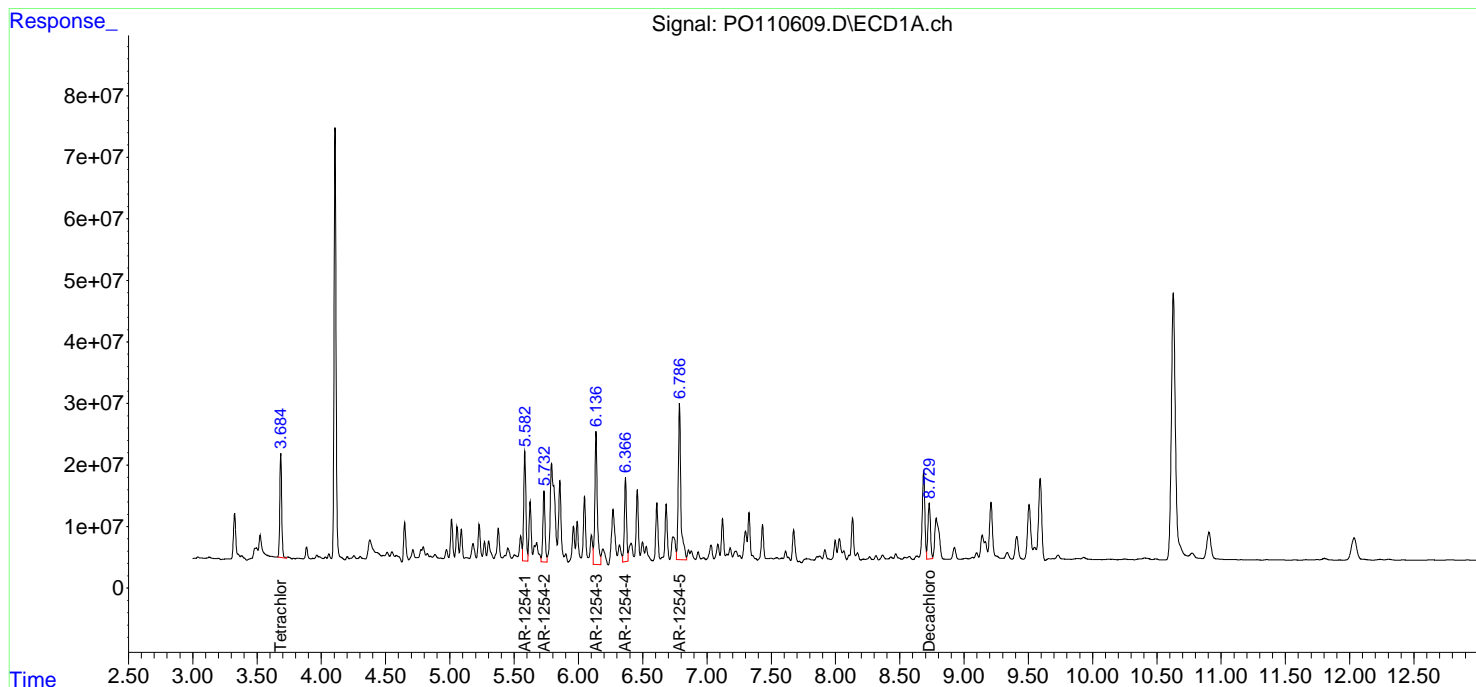
Data Path : Z:\pestpcbsrv\HPCHEM1\ECD_O\Data\PO042225\
 Data File : PO110609.D
 Signal(s) : Signal #1: ECD1A.ch Signal #2: ECD2B.ch
 Acq On : 22 Apr 2025 18:20
 Operator : YP/AJ
 Sample : Q1848-01
 Misc :
 ALS Vial : 19 Sample Multiplier: 1

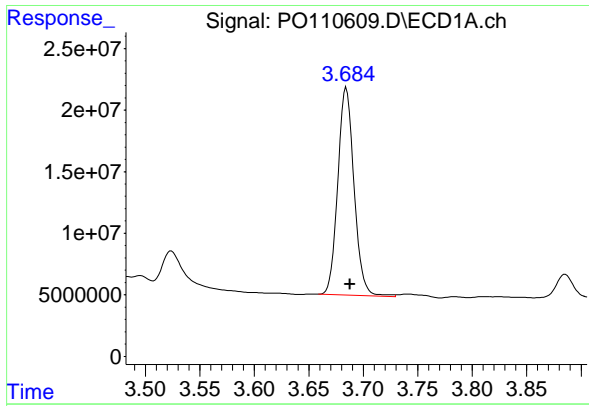
Instrument :
 ECD_O
ClientSampleId :
 RBR200027

Manual Integrations
APPROVED
 Reviewed By :Yogesh Patel 04/23/2025
 Supervised By :mohammad ahmed 04/24/2025

Integration File signal 1: autoint1.e
 Integration File signal 2: autoint2.e
 Quant Time: Apr 23 07:00:05 2025
 Quant Method : Z:\pestpcbsrv\HPCHEM1\ECD_O\methods\PO041025.M
 Quant Title : GC EXTRACTABLES
 QLast Update : Fri Apr 11 02:12:41 2025
 Response via : Initial Calibration
 Integrator: ChemStation

Volume Inj. : 2 µl
 Signal #1 Phase : ZB-MR1 Signal #2 Phase: ZB-MR2
 Signal #1 Info : 30Mx0.32mmx 0.50µm Signal #2 Info : 30M x 0.32mm x 0.25µm





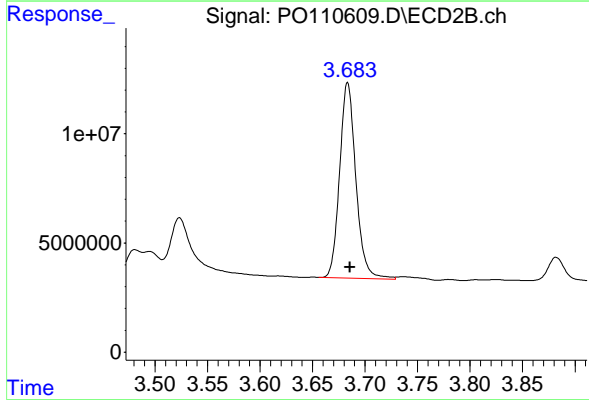
#1 Tetrachloro-m-xylene

R.T.: 3.684 min
 Delta R.T.: -0.004 min
 Response: 174063285
 Conc: 19.90 ng/ml

Instrument :
 ECD_O
 ClientSampleId :
 RBR200027

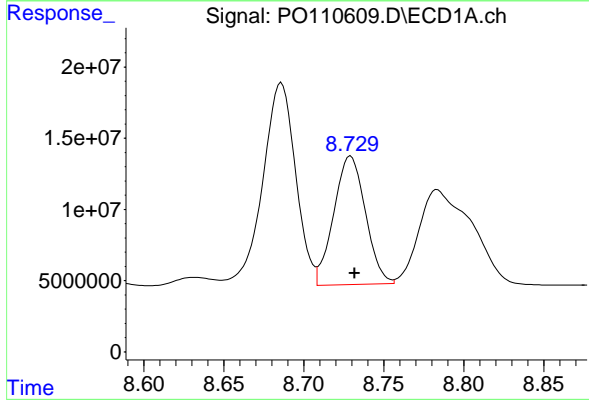
Manual Integrations
 APPROVED

Reviewed By :Yogesh Patel 04/23/2025
 Supervised By :mohammad ahmed 04/24/2025



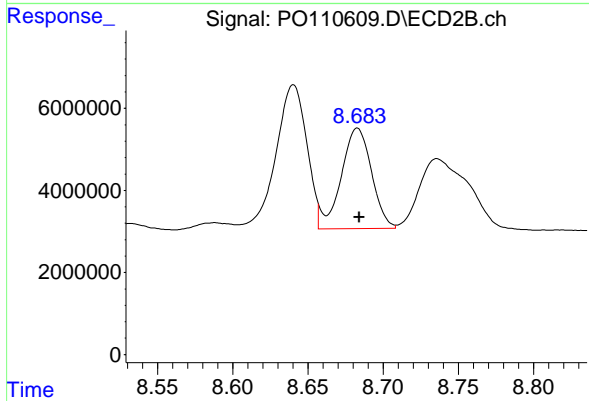
#1 Tetrachloro-m-xylene

R.T.: 3.683 min
 Delta R.T.: -0.002 min
 Response: 96316019
 Conc: 19.30 ng/ml



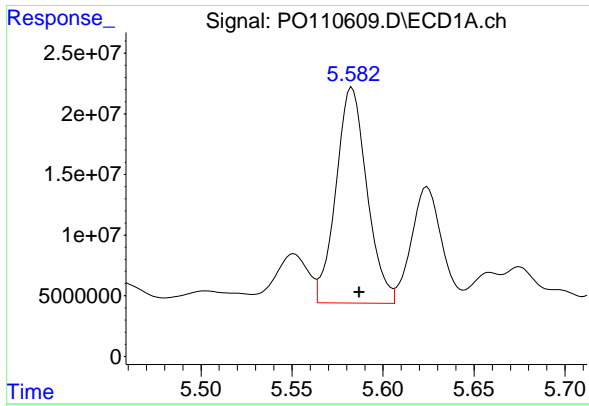
#2 Decachlorobiphenyl

R.T.: 8.729 min
 Delta R.T.: -0.003 min
 Response: 124101700
 Conc: 15.72 ng/ml m



#2 Decachlorobiphenyl

R.T.: 8.683 min
 Delta R.T.: -0.002 min
 Response: 34525740
 Conc: 17.94 ng/ml m



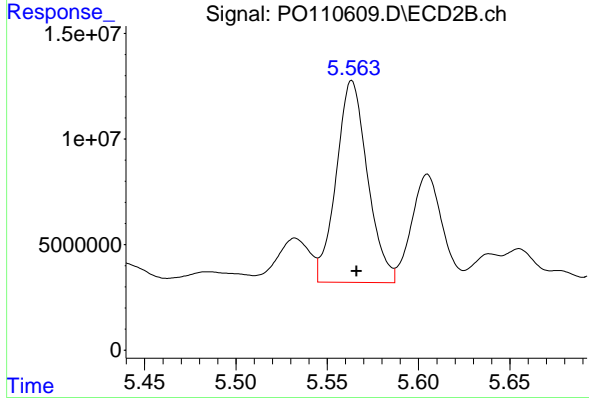
#26 AR-1254-1

R.T.: 5.583 min
 Delta R.T.: -0.004 min
 Response: 211003673
 Conc: 378.15 ng/ml

Instrument :
 ECD_O
 ClientSampleId :
 RBR200027

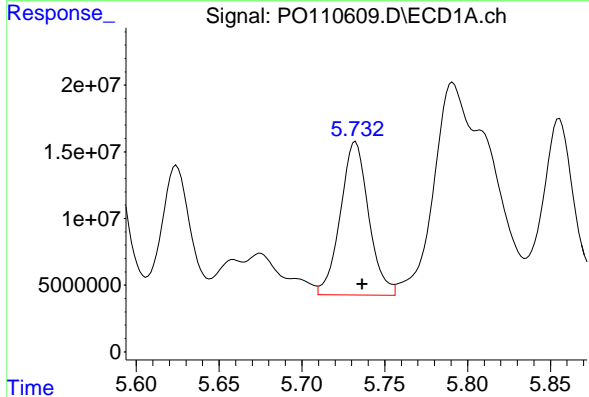
Manual Integrations
 APPROVED

Reviewed By :Yogesh Patel 04/23/2025
 Supervised By :mohammad ahmed 04/24/2025



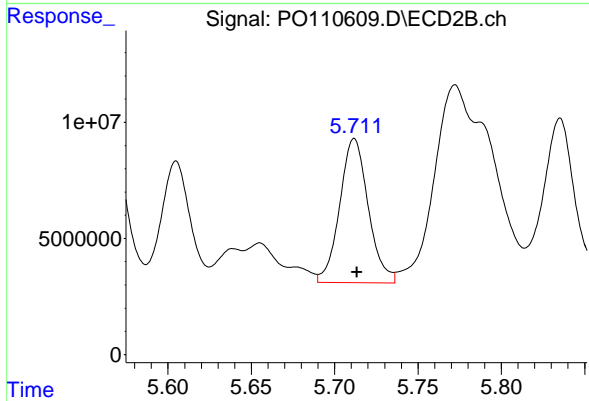
#26 AR-1254-1

R.T.: 5.564 min
 Delta R.T.: -0.003 min
 Response: 113833193
 Conc: 377.56 ng/ml



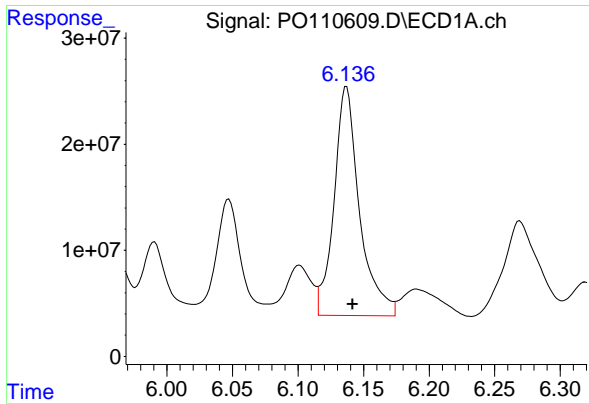
#27 AR-1254-2

R.T.: 5.732 min
 Delta R.T.: -0.004 min
 Response: 136816948
 Conc: 281.69 ng/ml



#27 AR-1254-2

R.T.: 5.712 min
 Delta R.T.: -0.002 min
 Response: 73981311
 Conc: 279.51 ng/ml



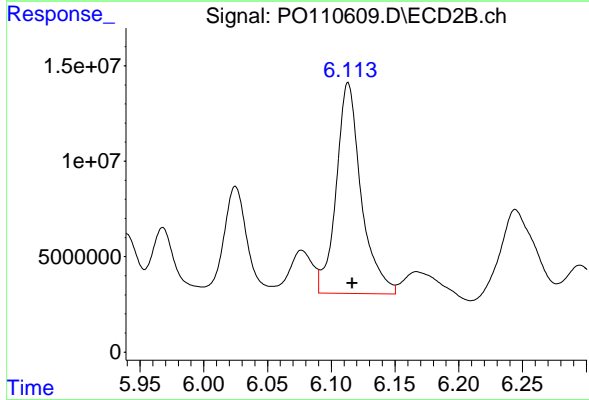
#28 AR-1254-3

R.T.: 6.137 min
 Delta R.T.: -0.005 min
 Response: 291299988
 Conc: 371.93 ng/ml

Instrument :
 ECD_O
 ClientSampleId :
 RBR200027

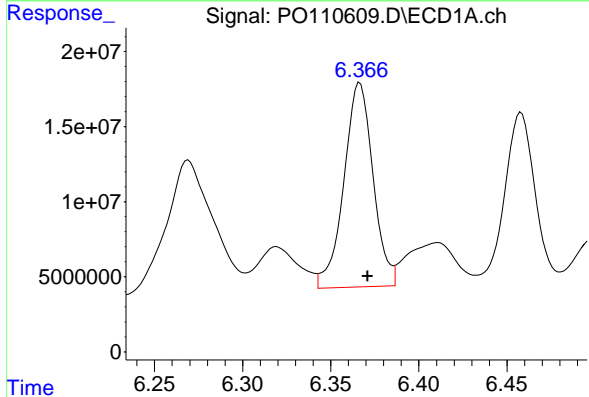
Manual Integrations
 APPROVED

Reviewed By :Yogesh Patel 04/23/2025
 Supervised By :mohammad ahmed 04/24/2025



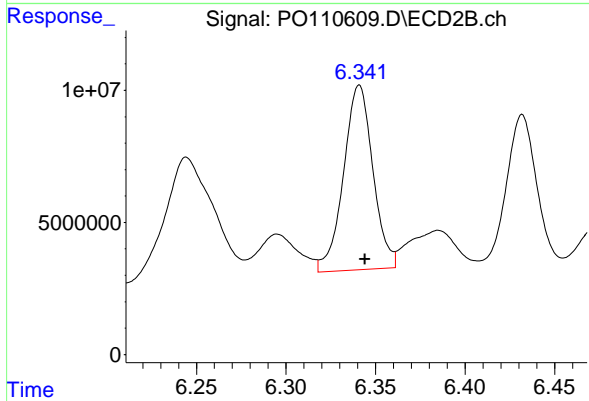
#28 AR-1254-3

R.T.: 6.113 min
 Delta R.T.: -0.004 min
 Response: 150049134
 Conc: 371.95 ng/ml m



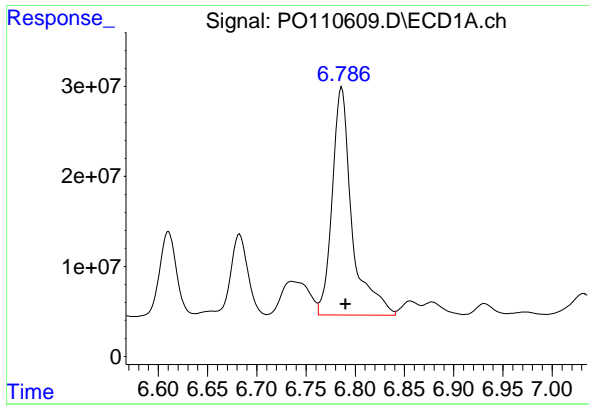
#29 AR-1254-4

R.T.: 6.367 min
 Delta R.T.: -0.004 min
 Response: 157071164
 Conc: 322.13 ng/ml



#29 AR-1254-4

R.T.: 6.341 min
 Delta R.T.: -0.003 min
 Response: 79952265
 Conc: 348.05 ng/ml



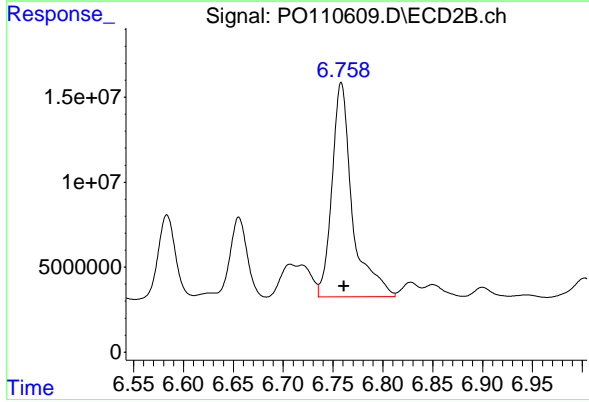
#30 AR-1254-5

R.T.: 6.786 min
 Delta R.T.: -0.004 min
 Response: 354591620
 Conc: 505.91 ng/ml

Instrument :
 ECD_O
 ClientSampleId :
 RBR200027

Manual Integrations
 APPROVED

Reviewed By :Yogesh Patel 04/23/2025
 Supervised By :mohammad ahmed 04/24/2025



#30 AR-1254-5

R.T.: 6.758 min
 Delta R.T.: -0.003 min
 Response: 179795392
 Conc: 541.08 ng/ml