

Data Path : Z:\pestpcbsrv\HPCHEM1\ECD_0\Data\P0042319\
 Data File : P0055568.D
 Signal(s) : Signal #1: ECD1A.CH Signal #2: ECD2B.CH
 Acq On : 24 Apr 2019 1:28
 Operator : SM/SJ
 Sample : K2522-07
 Misc :
 ALS Vial : 21 Sample Multiplier: 1

Instrument :
 ECD_0
 ClientSampleId :
 SP-WOODBURY

Integration File signal 1: autoint1.e
 Integration File signal 2: autoint2.e
 Quant Time: Apr 24 01:54:52 2019
 Quant Method : Z:\pestpcbsrv\HPCHEM1\ECD_0\methods\P0032519.M
 Quant Title : GC EXTRACTABLES
 QLast Update : Mon Mar 25 17:22:26 2019
 Response via : Initial Calibration
 Integrator: ChemStation 6890 Scale Mode: Small noise peaks clipped

Volume Inj. : 2 µl
 Signal #1 Phase : ZB-MR1 Signal #2 Phase: ZB-MR2
 Signal #1 Info : 30Mx0.32mmx 0.50µ Signal #2 Info : 30M x 0.32mm x 0.25µm

Compound	RT#1	RT#2	Resp#1	Resp#2	ng/ml	ng/ml

System Monitoring Compounds						
1) SA Tetrachlo...	4.290	3.601	654564	703415	18.861	22.042
2) SA Decachlor...	9.902	8.562	570499	408983	11.573	12.842

Target Compounds

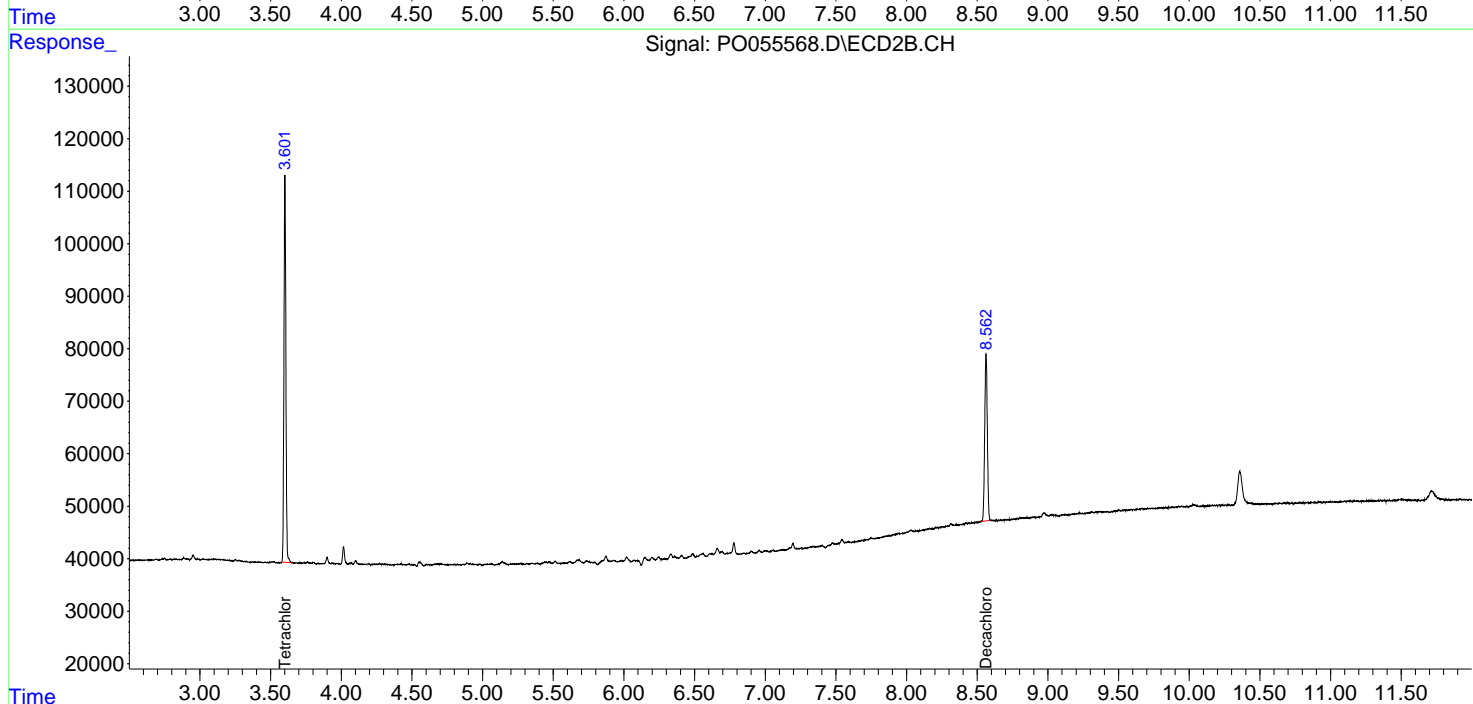
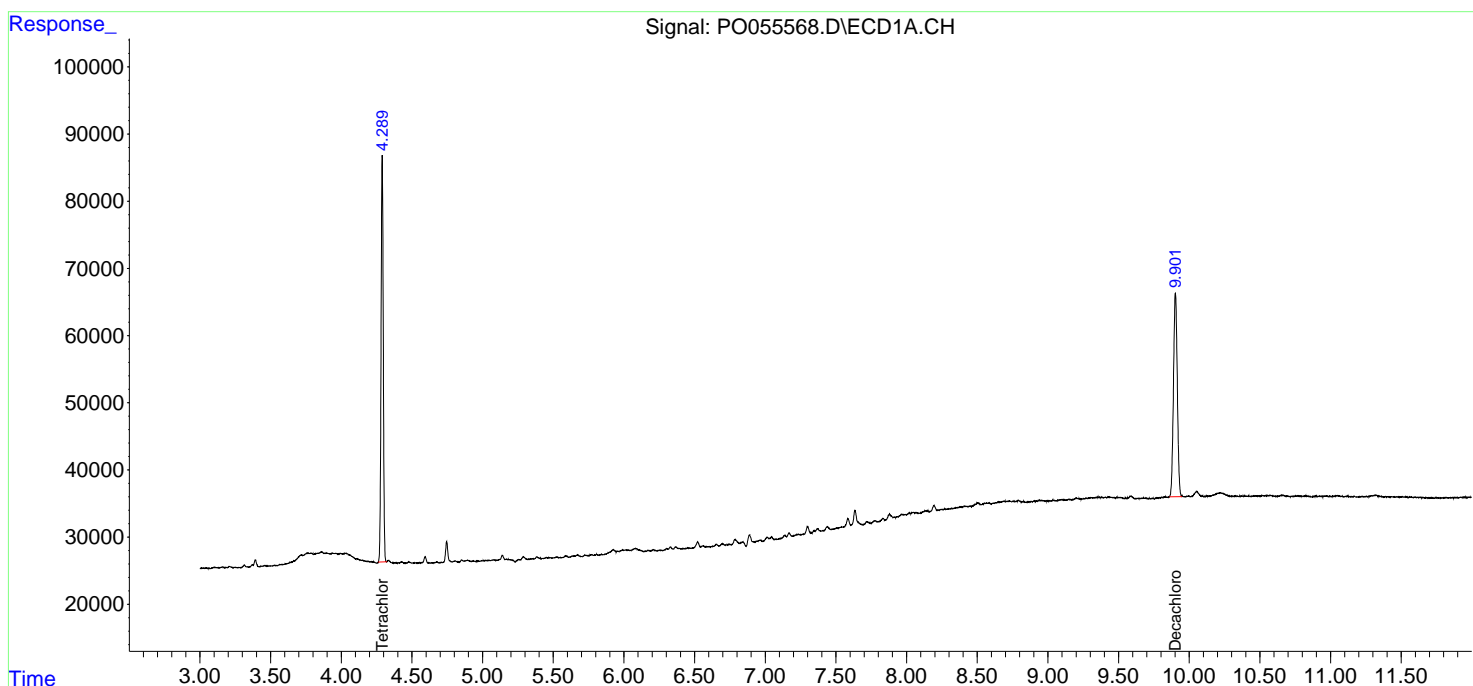
(f)=RT Delta > 1/2 Window (#)=Amounts differ by > 25% (m)=manual int.

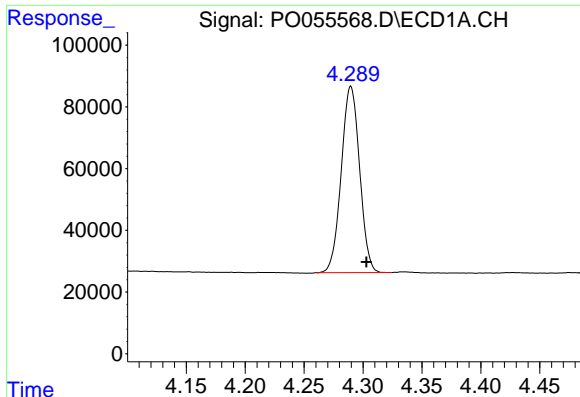
Data Path : Z:\pestpcbsrv\HPCHEM1\ECD_0\Data\P0042319\
 Data File : P0055568.D
 Signal(s) : Signal #1: ECD1A.CH Signal #2: ECD2B.CH
 Acq On : 24 Apr 2019 1:28
 Operator : SM/SJ
 Sample : K2522-07
 Misc :
 ALS Vial : 21 Sample Multiplier: 1

Instrument :
 ECD_O
 ClientSampleId :
 SP-WOODBURY

Integration File signal 1: autoint1.e
 Integration File signal 2: autoint2.e
 Quant Time: Apr 24 01:54:52 2019
 Quant Method : Z:\pestpcbsrv\HPCHEM1\ECD_0\methods\P0032519.M
 Quant Title : GC EXTRACTABLES
 QLast Update : Mon Mar 25 17:22:26 2019
 Response via : Initial Calibration
 Integrator: ChemStation 6890 Scale Mode: Small noise peaks clipped

Volume Inj. : 2 µl
 Signal #1 Phase : ZB-MR1 Signal #2 Phase: ZB-MR2
 Signal #1 Info : 30Mx0.32mmx 0.50µ Signal #2 Info : 30M x 0.32mm x 0.25µm

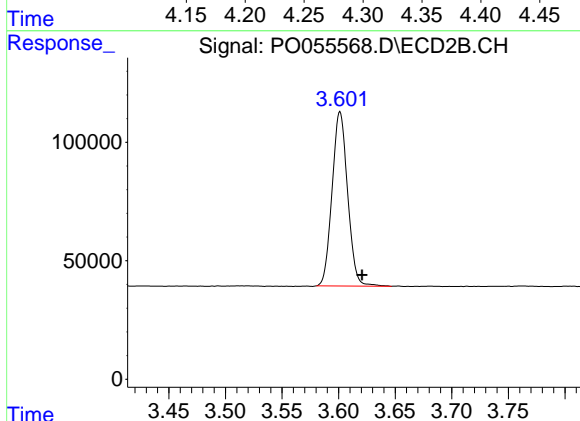




#1 Tetrachloro-m-xylene

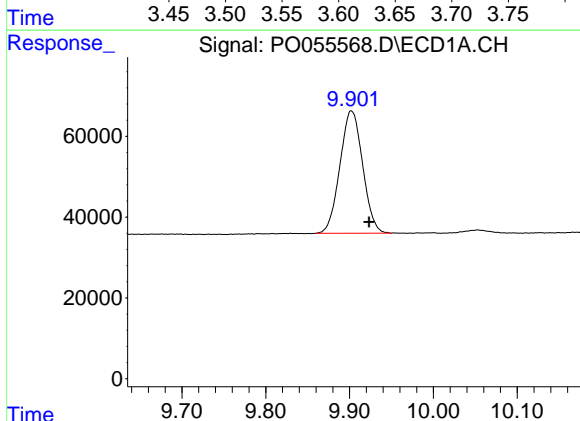
R.T.: 4.290 min
 Delta R.T.: -0.013 min
 Response: 654564
 Conc: 18.86 ng/ml

Instrument :
 ECD_O
 ClientSampleId :
 SP-WOODBURY



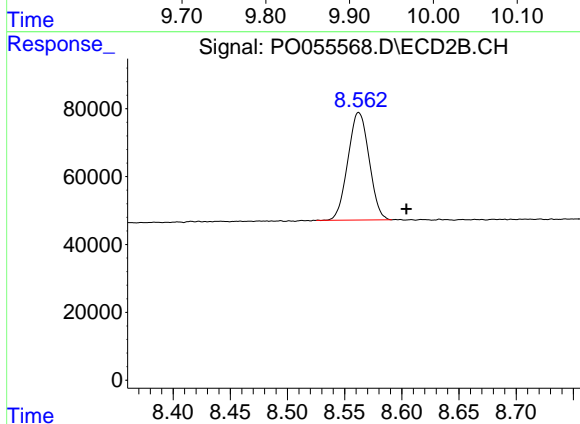
#1 Tetrachloro-m-xylene

R.T.: 3.601 min
 Delta R.T.: -0.020 min
 Response: 703415
 Conc: 22.04 ng/ml



#2 Decachlorobiphenyl

R.T.: 9.902 min
 Delta R.T.: -0.021 min
 Response: 570499
 Conc: 11.57 ng/ml



#2 Decachlorobiphenyl

R.T.: 8.562 min
 Delta R.T.: -0.042 min
 Response: 408983
 Conc: 12.84 ng/ml