

Data Path : Z:\pestpcbsrv\HPCHEM1\ECD_0\Data\P0042319\
 Data File : P0055577.D
 Signal(s) : Signal #1: ECD1A.CH Signal #2: ECD2B.CH
 Acq On : 24 Apr 2019 4:18
 Operator : SM/SJ
 Sample : K2532-11
 Misc :
 ALS Vial : 28 Sample Multiplier: 1

Instrument :
 ECD_0
 ClientSampleId :
 TP-3

Integration File signal 1: autoint1.e
 Integration File signal 2: autoint2.e
 Quant Time: Apr 24 04:29:36 2019
 Quant Method : Z:\pestpcbsrv\HPCHEM1\ECD_0\methods\P0032519.M
 Quant Title : GC EXTRACTABLES
 QLast Update : Mon Mar 25 17:22:26 2019
 Response via : Initial Calibration
 Integrator: ChemStation 6890 Scale Mode: Small noise peaks clipped

Volume Inj. : 2 µl
 Signal #1 Phase : ZB-MR1 Signal #2 Phase: ZB-MR2
 Signal #1 Info : 30Mx0.32mmx 0.50µ Signal #2 Info : 30M x 0.32mm x 0.25µm

| Compound | RT#1 | RT#2 | Resp#1 | Resp#2 | ng/ml | ng/ml |
|-----------------------------|-------|-------|--------|--------|--------|--------|
| ----- | | | | | | |
| System Monitoring Compounds | | | | | | |
| 1) SA Tetrachlo... | 4.290 | 3.601 | 617528 | 649246 | 17.794 | 20.345 |
| 2) SA Decachlor... | 9.901 | 8.563 | 552551 | 402164 | 11.208 | 12.628 |

Target Compounds

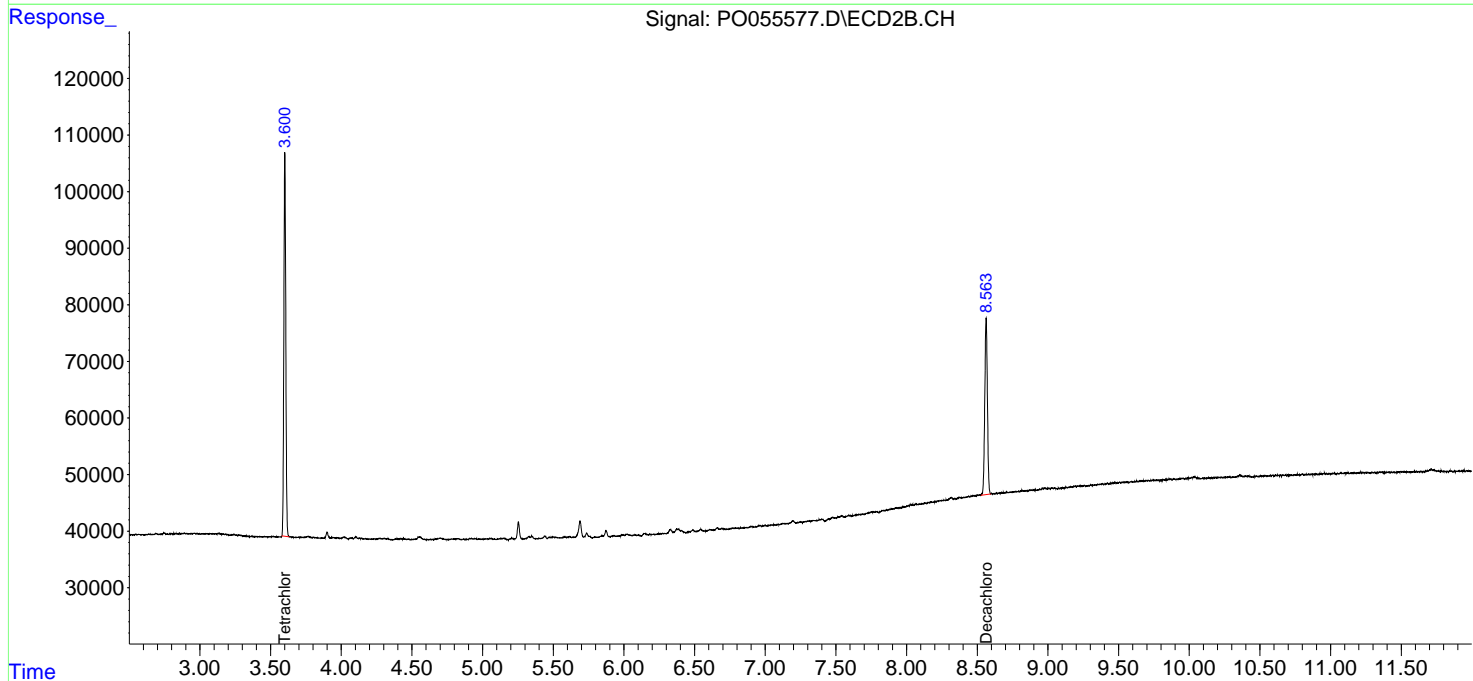
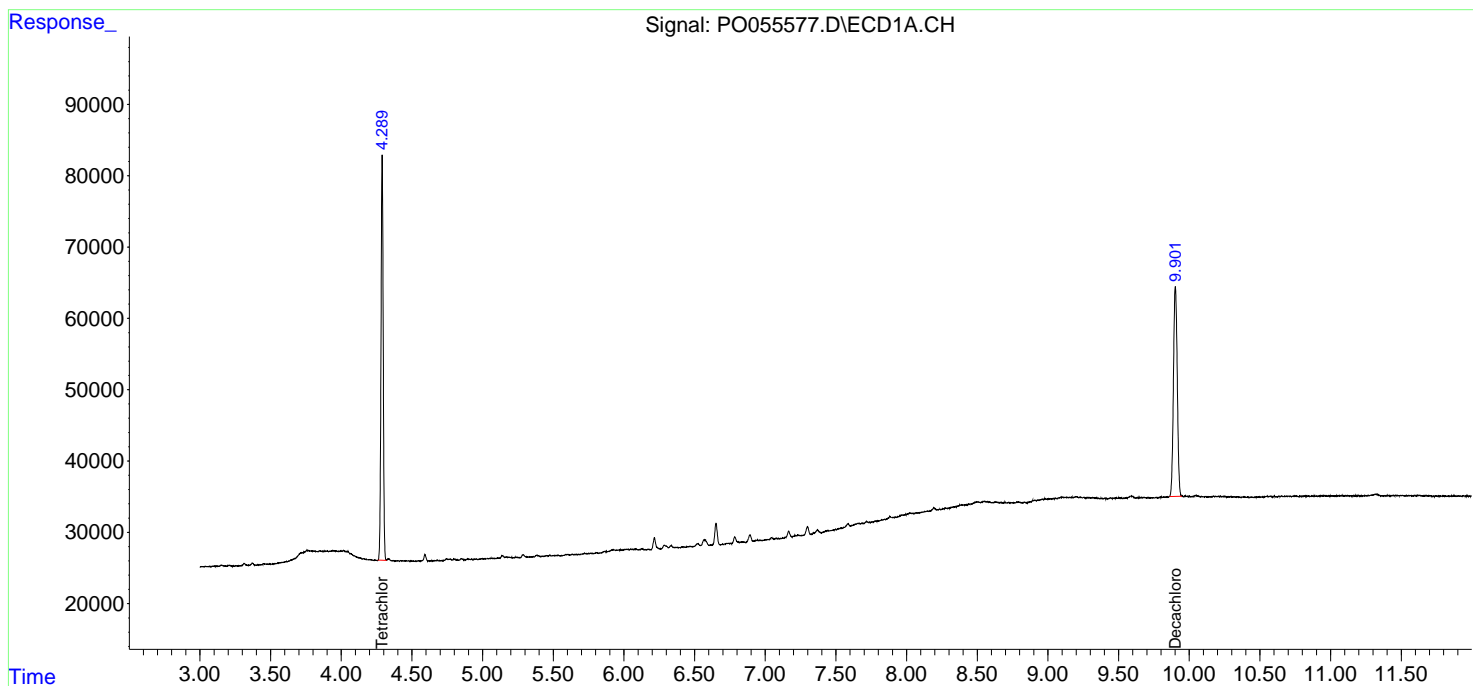
(f)=RT Delta > 1/2 Window (#)=Amounts differ by > 25% (m)=manual int.

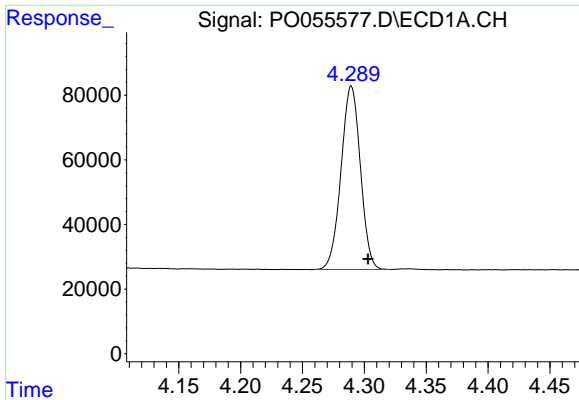
Data Path : Z:\pestpcbsrv\HPCHEM1\ECD_0\Data\P0042319\
 Data File : P0055577.D
 Signal(s) : Signal #1: ECD1A.CH Signal #2: ECD2B.CH
 Acq On : 24 Apr 2019 4:18
 Operator : SM/SJ
 Sample : K2532-11
 Misc :
 ALS Vial : 28 Sample Multiplier: 1

Instrument :
 ECD_O
 ClientSampleId :
 TP-3

Integration File signal 1: autoint1.e
 Integration File signal 2: autoint2.e
 Quant Time: Apr 24 04:29:36 2019
 Quant Method : Z:\pestpcbsrv\HPCHEM1\ECD_0\methods\P0032519.M
 Quant Title : GC EXTRACTABLES
 QLast Update : Mon Mar 25 17:22:26 2019
 Response via : Initial Calibration
 Integrator: ChemStation 6890 Scale Mode: Small noise peaks clipped

Volume Inj. : 2 µl
 Signal #1 Phase : ZB-MR1 Signal #2 Phase: ZB-MR2
 Signal #1 Info : 30Mx0.32mmx 0.50µ Signal #2 Info : 30M x 0.32mm x 0.25µm

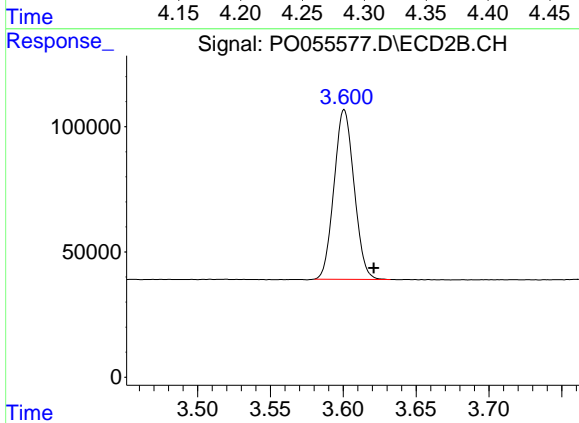




#1 Tetrachloro-m-xylene

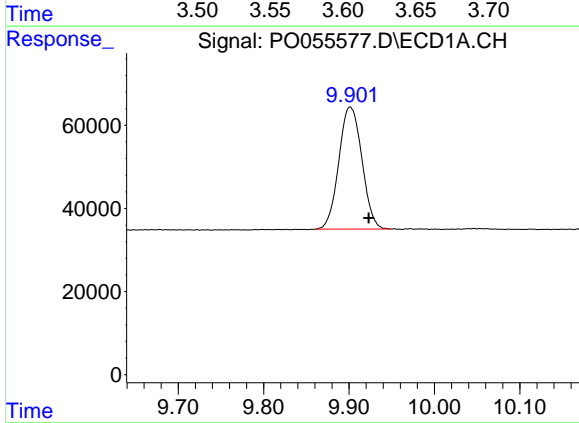
R.T.: 4.290 min
 Delta R.T.: -0.013 min
 Response: 617528
 Conc: 17.79 ng/ml

Instrument :
 ECD_O
 ClientSampled :
 TP-3



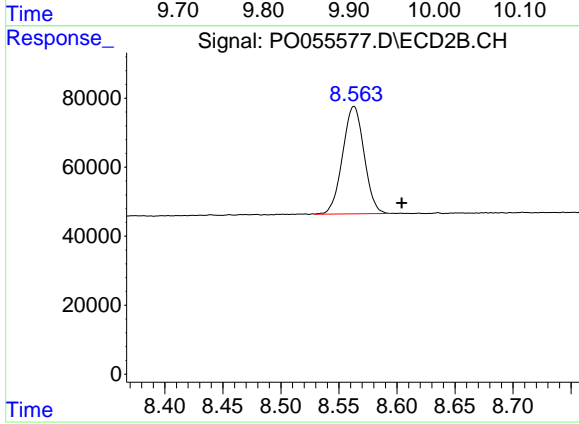
#1 Tetrachloro-m-xylene

R.T.: 3.601 min
 Delta R.T.: -0.020 min
 Response: 649246
 Conc: 20.34 ng/ml



#2 Decachlorobiphenyl

R.T.: 9.901 min
 Delta R.T.: -0.022 min
 Response: 552551
 Conc: 11.21 ng/ml



#2 Decachlorobiphenyl

R.T.: 8.563 min
 Delta R.T.: -0.041 min
 Response: 402164
 Conc: 12.63 ng/ml