

Data Path : Z:\pestpcbsrv\HPCHEM1\ECD_O\Data\P0042324\
 Data File : P0103071.D
 Signal(s) : Signal #1: ECD1A.ch Signal #2: ECD2B.ch
 Acq On : 23 Apr 2024 19:47
 Operator : YP/AJ
 Sample : P2208-01
 Misc :
 ALS Vial : 28 Sample Multiplier: 1

Instrument :
 ECD_O
 ClientSampleId :
 LNG-11

Integration File signal 1: autoint1.e
 Integration File signal 2: autoint2.e
 Quant Time: Apr 24 01:45:57 2024
 Quant Method : Z:\pestpcbsrv\HPCHEM1\ECD_O\methods\P0042224.M
 Quant Title : GC EXTRACTABLES
 QLast Update : Tue Apr 23 02:20:10 2024
 Response via : Initial Calibration
 Integrator: ChemStation

Volume Inj. : 2 µl
 Signal #1 Phase : ZB-MR1 Signal #2 Phase: ZB-MR2
 Signal #1 Info : 30Mx0.32mmx 0.50µ Signal #2 Info : 30M x 0.32mm x 0.25µm

Compound	RT#1	RT#2	Resp#1	Resp#2	ng/ml	ng/ml

System Monitoring Compounds						
1) SA Tetrachlo...	4.253	3.372	158.5E6	54911009	31.418	19.841 #
2) SA Decachlor...	9.774	8.227	61073168	34851880	21.032	20.299
Target Compounds						
3) L1 AR-1016-1	5.396	4.421	1438.6E6	762.2E6	9799.137	9692.176
4) L1 AR-1016-2	5.420	4.437	1624.8E6	551.5E6	7523.966	4699.293 #
5) L1 AR-1016-3	5.479	4.611	605.7E6	382.1E6	4453.297	6169.398 #
6) L1 AR-1016-4	5.574	4.651	704.7E6	11483.8E6	6528.186	216789.637 #
7) L1 AR-1016-5	5.868	4.859	15174.6E6	7789.5E6	144773.814	114240.716
8) L2 AR-1221-1	4.454	3.577	75348667	19777068	1297.254	632.417 #
9) L2 AR-1221-2	4.541	3.662	41424313	44280196	977.306	1866.134 #
10) L2 AR-1221-3	4.616	3.734	305.1E6	165.0E6	2394.323	2326.920
11) L3 AR-1232-1	4.616	3.734	305.1E6	165.0E6	3048.344	2886.800
12) L3 AR-1232-2	5.134	4.437	460.2E6	551.5E6	8093.478	10103.957
13) L3 AR-1232-3	5.420	4.611	1624.8E6	382.1E6	16495.932	13394.372
14) L3 AR-1232-4	5.574	4.690	704.7E6	4448.1E6	14690.667	164260.742 #
15) L3 AR-1232-5	5.665	4.859	20390.7E6	7789.5E6	506957.598	267708.604 #
16) L4 AR-1242-1	5.396	4.421	1438.6E6	762.2E6	11795.046	11497.222
17) L4 AR-1242-2	5.420	4.437	1624.8E6	551.5E6	9072.126	5653.244 #
18) L4 AR-1242-3	5.479	4.611	605.7E6	382.1E6	5356.770	7128.990 #
19) L4 AR-1242-4	5.574	4.690	704.7E6	4448.1E6	7893.883	80655.954 #
20) L4 AR-1242-5	6.301	5.202	23692.3E6	25065.9E6	283491.634	396066.741 #
21) L5 AR-1248-1	5.396	4.421	1438.6E6	762.2E6	16092.816	15348.270
22) L5 AR-1248-2	5.665	4.651	20390.7E6	11483.8E6	147804.163	152571.072
23) L5 AR-1248-3	5.868	4.690	15174.6E6	4448.1E6	106968.287	57264.091 #
24) L5 AR-1248-4	6.260	4.859	26884.7E6	7789.5E6	189661.784	86856.491 #
25) L5 AR-1248-5	6.301	5.242	23692.3E6	5001.0E6	172330.851	62378.873 #
26) L6 AR-1254-1	6.236	5.202	48448.5E6	25065.9E6	305234.502	186353.014 #
27) L6 AR-1254-2	6.447	5.347	33332.8E6	22026.4E6	142317.303	186380.111 #
28) L6 AR-1254-3	6.804	5.744	32518.7E6	32365.3E6	140345.115	184833.507 #
29) L6 AR-1254-4	7.089	5.968	29680.4E6	23018.4E6	200048.213	226919.623
30) L6 AR-1254-5	7.504	6.378	31097.1E6	30348.6E6	186976.240	201438.981
31) L7 AR-1260-1	6.974	5.869	19755.2E6	18654.4E6	111504.750	146710.500 #
32) L7 AR-1260-2	7.228	6.055	22705.3E6	14749.7E6	114476.920	96037.086
33) L7 AR-1260-3	7.568	6.204	5658.0E6	14380.8E6	39996.542	103198.114 #
34) L7 AR-1260-4	7.796	6.668	14417.5E6	1493.9E6	92745.339	13580.747 #
35) L7 AR-1260-5	8.111	6.908	6343.5E6	4184.6E6	21262.583	16310.606
36) L8 AR-1262-1	7.504	6.378	31097.1E6	30348.6E6	227954.438	374669.136 #
37) L8 AR-1262-2	8.111	6.668	6343.5E6	1493.9E6	18929.478	10417.318 #
38) L8 AR-1262-3	8.418	7.186	4750.6E6	127.7E6	21487.638	1051.941 #
39) L8 AR-1262-4	8.462	7.248	1048.9E6	3872.7E6	6034.471	18813.439 #
40) L8 AR-1262-5	9.092	7.740	274.3E6	212.7E6	2336.031	2417.215
41) L9 AR-1268-1	8.418	7.186	4750.6E6	127.7E6	12037.737	360.347 #

Data Path : Z:\pestpcbsrv\HPCHEM1\ECD_O\Data\P0042324\
 Data File : P0103071.D
 Signal(s) : Signal #1: ECD1A.ch Signal #2: ECD2B.ch
 Acq On : 23 Apr 2024 19:47
 Operator : YP/AJ
 Sample : P2208-01
 Misc :
 ALS Vial : 28 Sample Multiplier: 1

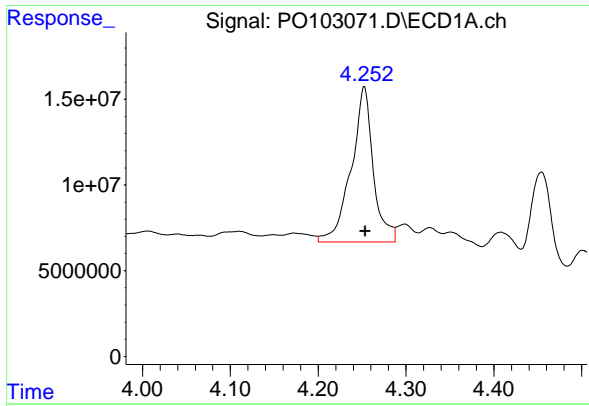
Instrument :
 ECD_O
 ClientSampleId :
 LNG-11

Integration File signal 1: autoint1.e
 Integration File signal 2: autoint2.e
 Quant Time: Apr 24 01:45:57 2024
 Quant Method : Z:\pestpcbsrv\HPCHEM1\ECD_O\methods\P0042224.M
 Quant Title : GC EXTRACTABLES
 QLast Update : Tue Apr 23 02:20:10 2024
 Response via : Initial Calibration
 Integrator: ChemStation

Volume Inj. : 2 µl
 Signal #1 Phase : ZB-MR1 Signal #2 Phase: ZB-MR2
 Signal #1 Info : 30Mx0.32mmx 0.50µ Signal #2 Info : 30M x 0.32mm x 0.25µm

	Compound	RT#1	RT#2	Resp#1	Resp#2	ng/ml	ng/ml
42)	L9 AR-1268-2	8.462	7.248	1048.9E6	3872.7E6	2812.845	12181.294 #
43)	L9 AR-1268-3	8.691	7.404f	32445030	1023070	97.953	3.768 #
44)	L9 AR-1268-4	9.092	8.005	274.3E6	29701956	2102.808	41.003 #
45)	L9 AR-1268-5	9.469	8.227	54460890	34851880	51.861	112.426 #

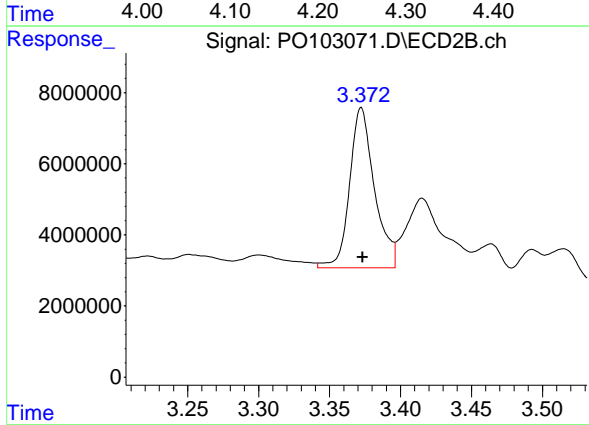
(f)=RT Delta > 1/2 Window (#)=Amounts differ by > 25% (m)=manual int.



#1 Tetrachloro-m-xylene

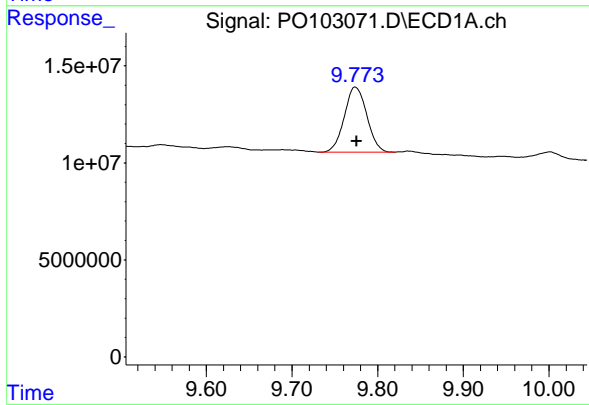
R.T.: 4.253 min
 Delta R.T.: -0.001 min
 Response: 158455444
 Conc: 31.42 ng/ml

Instrument :
 ECD_O
 ClientSampleId :
 LNG-11



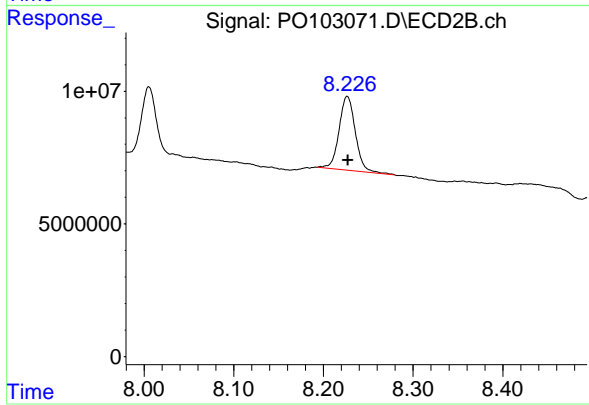
#1 Tetrachloro-m-xylene

R.T.: 3.372 min
 Delta R.T.: 0.000 min
 Response: 54911009
 Conc: 19.84 ng/ml



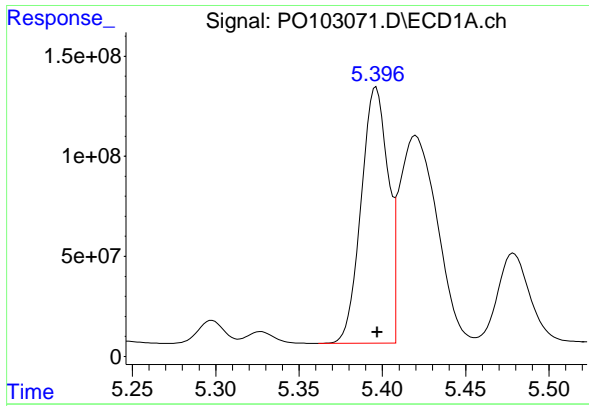
#2 Decachlorobiphenyl

R.T.: 9.774 min
 Delta R.T.: -0.002 min
 Response: 61073168
 Conc: 21.03 ng/ml



#2 Decachlorobiphenyl

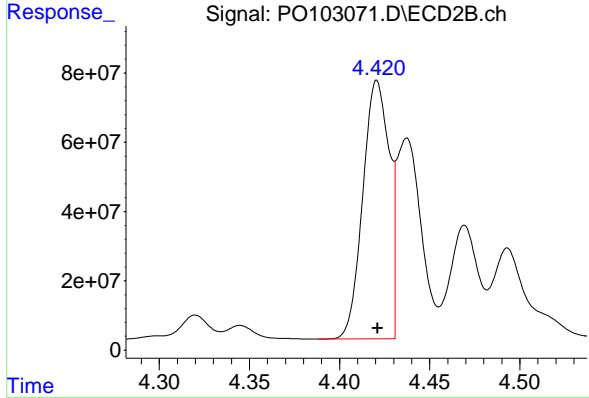
R.T.: 8.227 min
 Delta R.T.: 0.000 min
 Response: 34851880
 Conc: 20.30 ng/ml



#3 AR-1016-1

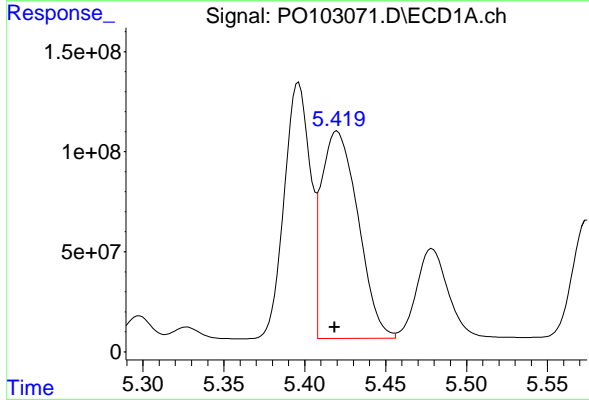
R.T.: 5.396 min
 Delta R.T.: 0.000 min
 Response: 1438618097
 Conc: 9799.14 ng/ml

Instrument :
 ECD_O
 ClientSampleId :
 LNG-11



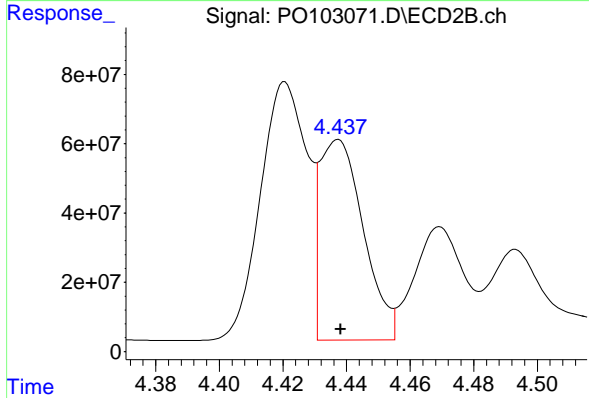
#3 AR-1016-1

R.T.: 4.421 min
 Delta R.T.: 0.000 min
 Response: 762194248
 Conc: 9692.18 ng/ml



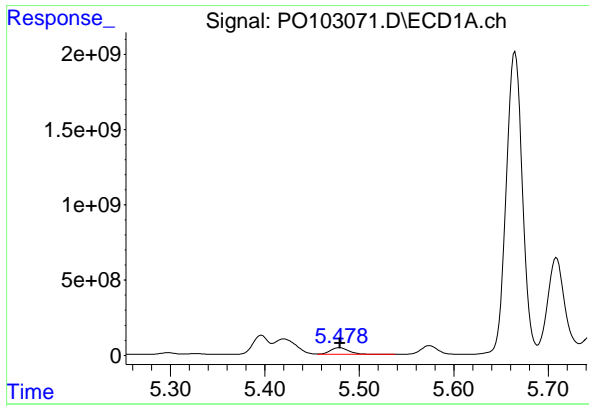
#4 AR-1016-2

R.T.: 5.420 min
 Delta R.T.: 0.002 min
 Response: 1624764289
 Conc: 7523.97 ng/ml



#4 AR-1016-2

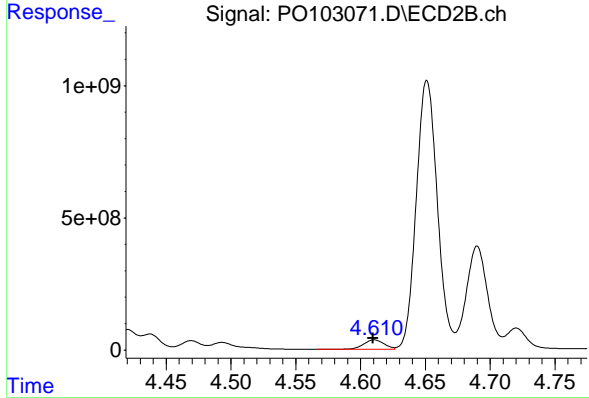
R.T.: 4.437 min
 Delta R.T.: 0.000 min
 Response: 551485132
 Conc: 4699.29 ng/ml



#5 AR-1016-3

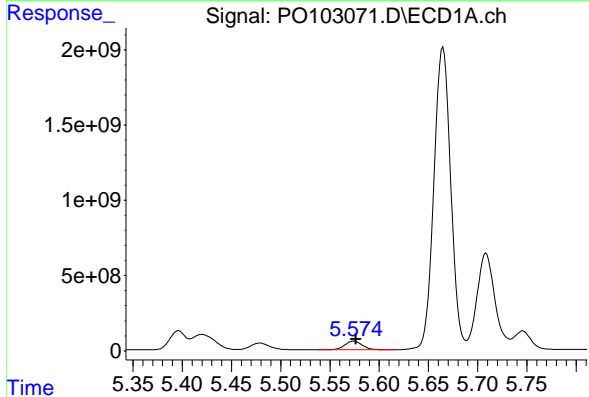
R.T.: 5.479 min
 Delta R.T.: 0.000 min
 Response: 605670912
 Conc: 4453.30 ng/ml

Instrument :
 ECD_O
 ClientSampleId :
 LNG-11



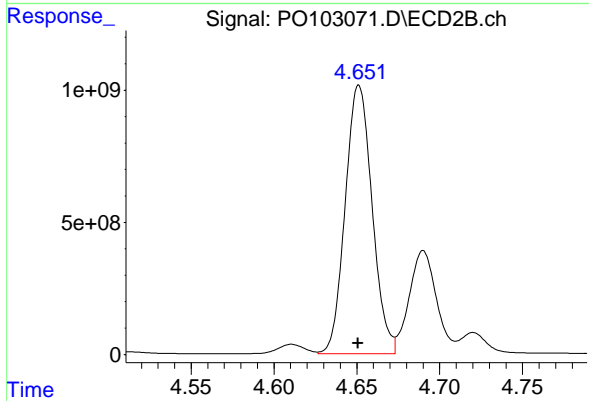
#5 AR-1016-3

R.T.: 4.611 min
 Delta R.T.: 0.000 min
 Response: 382128807
 Conc: 6169.40 ng/ml



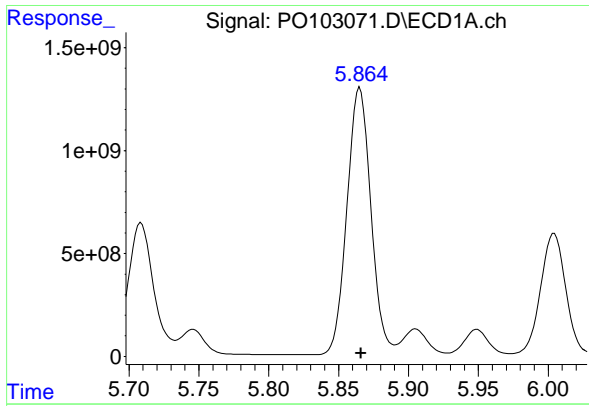
#6 AR-1016-4

R.T.: 5.574 min
 Delta R.T.: -0.002 min
 Response: 704731625
 Conc: 6528.19 ng/ml



#6 AR-1016-4

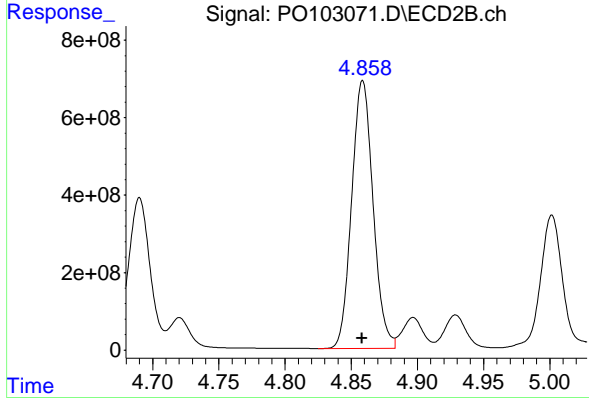
R.T.: 4.651 min
 Delta R.T.: 0.000 min
 Response: 11483847101
 Conc: 216789.64 ng/ml



#7 AR-1016-5

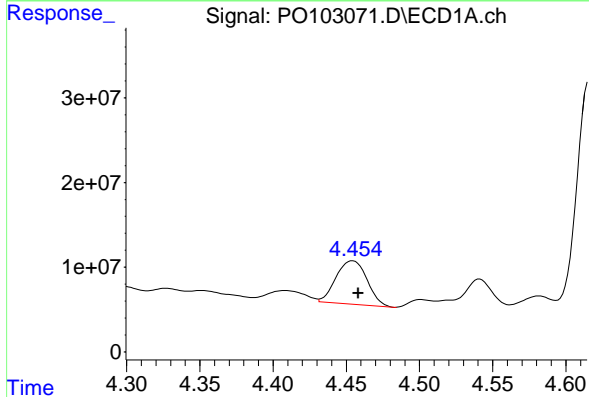
R.T.: 5.868 min
 Delta R.T.: 0.002 min
 Response: 15174626068
 Conc: 144773.81 ng

Instrument :
 ECD_O
 ClientSampleId :
 LNG-11



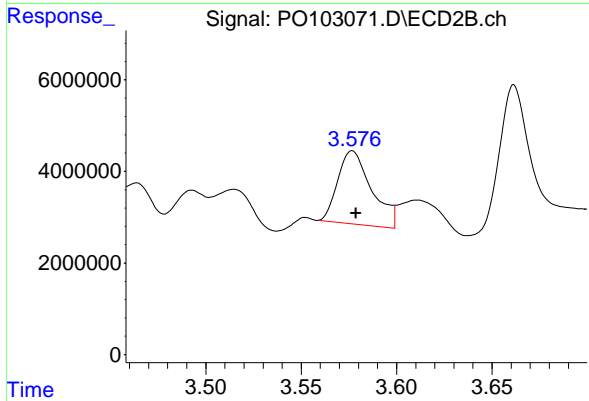
#7 AR-1016-5

R.T.: 4.859 min
 Delta R.T.: 0.000 min
 Response: 7789519500
 Conc: 114240.72 ng/ml



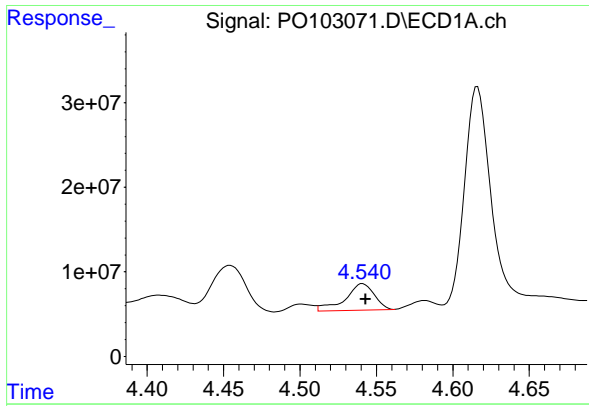
#8 AR-1221-1

R.T.: 4.454 min
 Delta R.T.: -0.004 min
 Response: 75348667
 Conc: 1297.25 ng/ml



#8 AR-1221-1

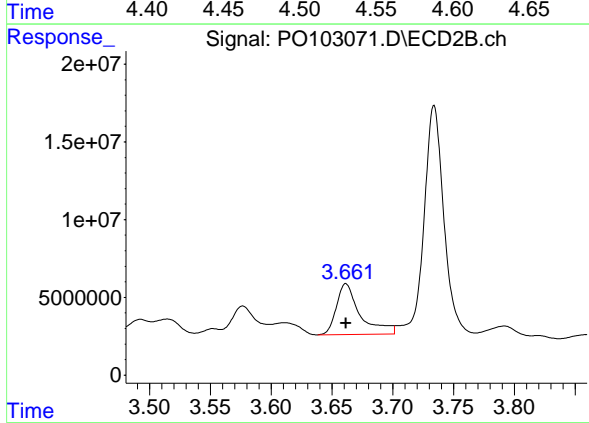
R.T.: 3.577 min
 Delta R.T.: -0.002 min
 Response: 19777068
 Conc: 632.42 ng/ml



#9 AR-1221-2

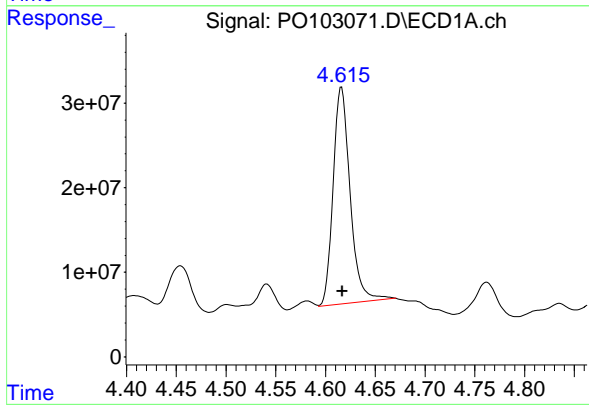
R.T.: 4.541 min
 Delta R.T.: -0.002 min
 Response: 41424313
 Conc: 977.31 ng/ml

Instrument :
 ECD_O
 ClientSampleId :
 LNG-11



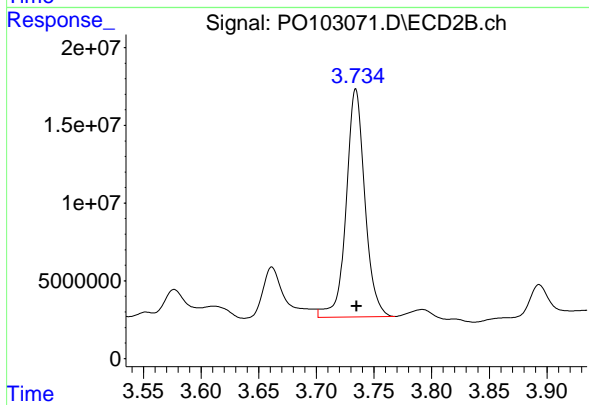
#9 AR-1221-2

R.T.: 3.662 min
 Delta R.T.: 0.000 min
 Response: 44280196
 Conc: 1866.13 ng/ml



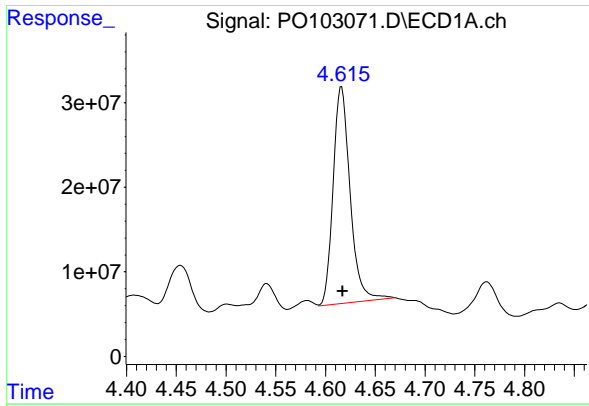
#10 AR-1221-3

R.T.: 4.616 min
 Delta R.T.: 0.000 min
 Response: 305094528
 Conc: 2394.32 ng/ml



#10 AR-1221-3

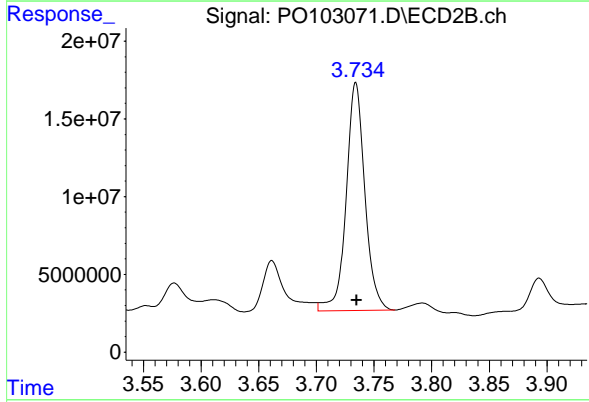
R.T.: 3.734 min
 Delta R.T.: 0.000 min
 Response: 165042652
 Conc: 2326.92 ng/ml



#11 AR-1232-1

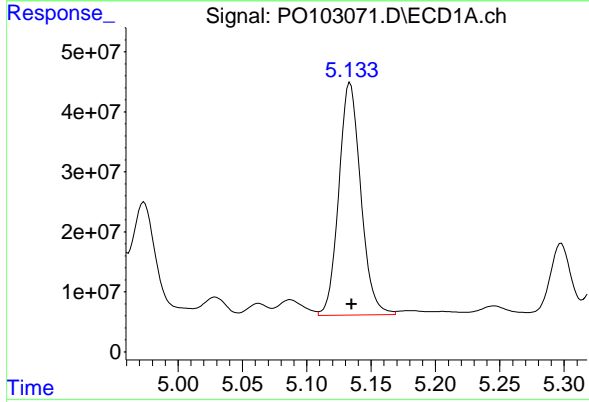
R.T.: 4.616 min
 Delta R.T.: -0.001 min
 Response: 305094528
 Conc: 3048.34 ng/ml

Instrument :
 ECD_O
 ClientSampleId :
 LNG-11



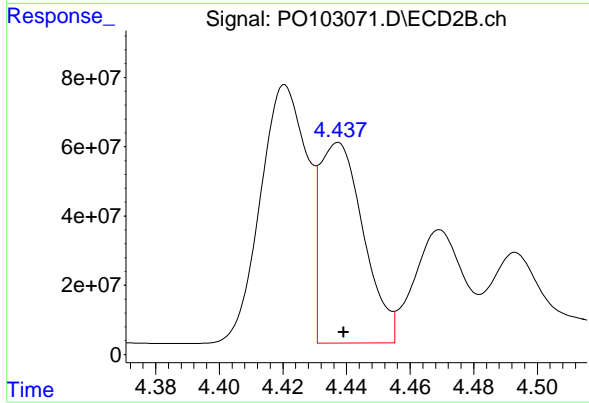
#11 AR-1232-1

R.T.: 3.734 min
 Delta R.T.: 0.000 min
 Response: 165042652
 Conc: 2886.80 ng/ml



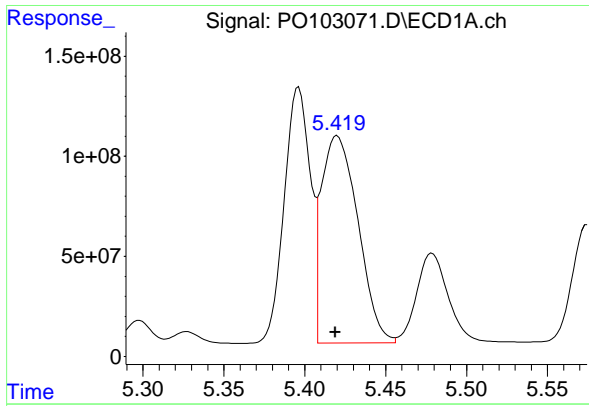
#12 AR-1232-2

R.T.: 5.134 min
 Delta R.T.: -0.001 min
 Response: 460224345
 Conc: 8093.48 ng/ml



#12 AR-1232-2

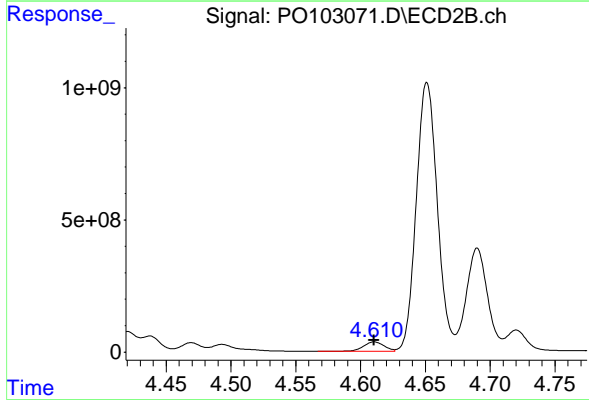
R.T.: 4.437 min
 Delta R.T.: -0.002 min
 Response: 551485132
 Conc: 10103.96 ng/ml



#13 AR-1232-3

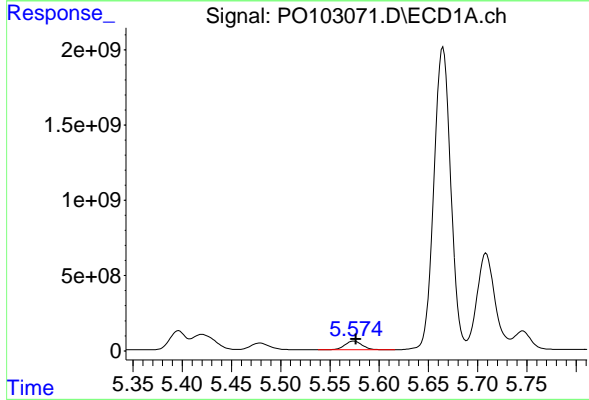
R.T.: 5.420 min
 Delta R.T.: 0.001 min
 Response: 1624764289
 Conc: 16495.93 ng/ml

Instrument : ECD_O
 ClientSampleId : LNG-11



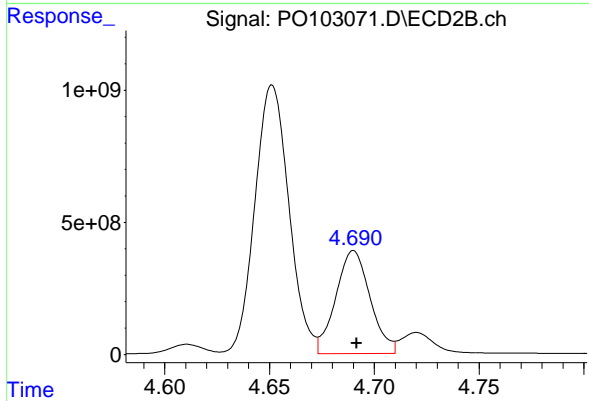
#13 AR-1232-3

R.T.: 4.611 min
 Delta R.T.: 0.000 min
 Response: 382128807
 Conc: 13394.37 ng/ml



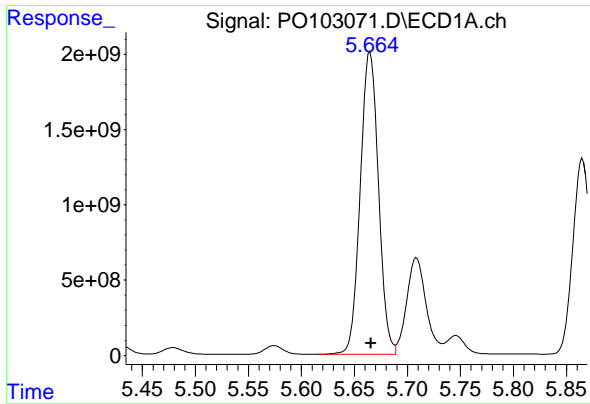
#14 AR-1232-4

R.T.: 5.574 min
 Delta R.T.: -0.002 min
 Response: 704731625
 Conc: 14690.67 ng/ml



#14 AR-1232-4

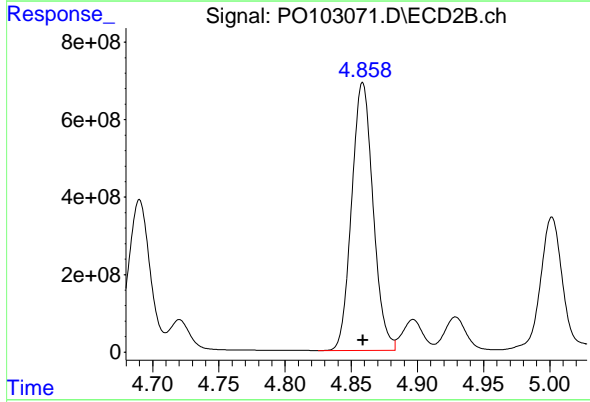
R.T.: 4.690 min
 Delta R.T.: -0.001 min
 Response: 4448146036
 Conc: 164260.74 ng/ml



#15 AR-1232-5

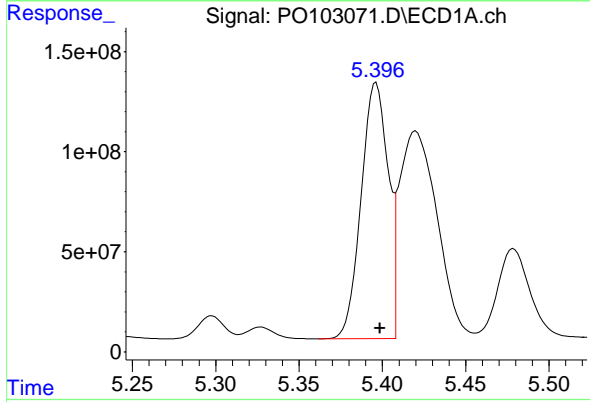
R.T.: 5.665 min
 Delta R.T.: 0.000 min
 Response: 20390674658
 Conc: 506957.60 ng/ml

Instrument :
 ECD_O
 ClientSampleId :
 LNG-11



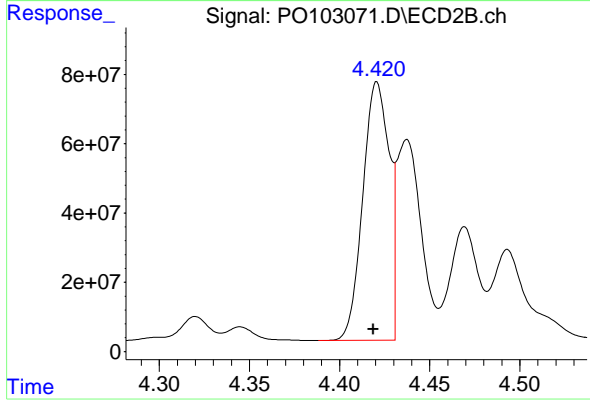
#15 AR-1232-5

R.T.: 4.859 min
 Delta R.T.: 0.000 min
 Response: 7789519500
 Conc: 267708.60 ng/ml



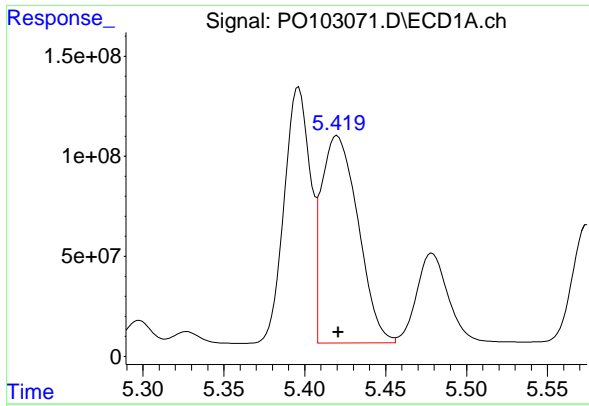
#16 AR-1242-1

R.T.: 5.396 min
 Delta R.T.: -0.002 min
 Response: 1438618097
 Conc: 11795.05 ng/ml



#16 AR-1242-1

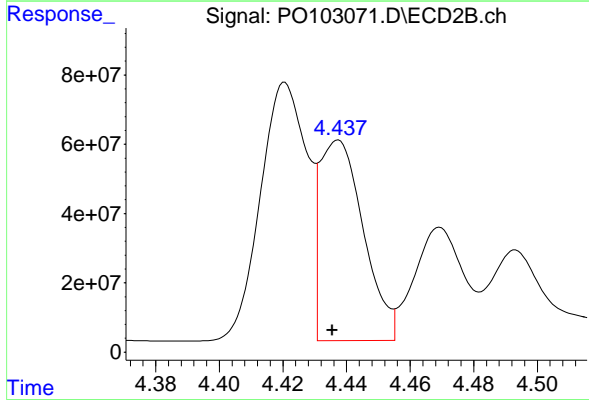
R.T.: 4.421 min
 Delta R.T.: 0.002 min
 Response: 762194248
 Conc: 11497.22 ng/ml



#17 AR-1242-2

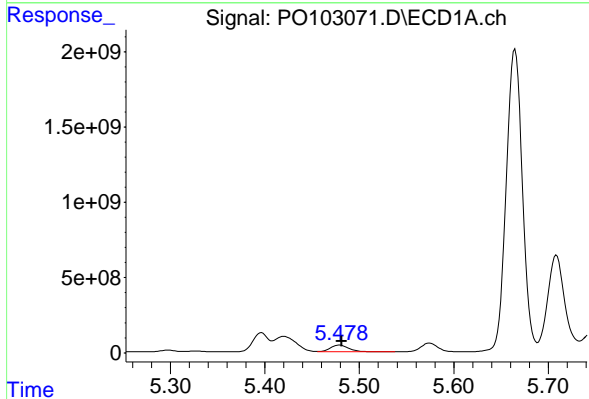
R.T.: 5.420 min
 Delta R.T.: 0.000 min
 Response: 1624764289
 Conc: 9072.13 ng/ml

Instrument :
 ECD_O
 ClientSampleId :
 LNG-11



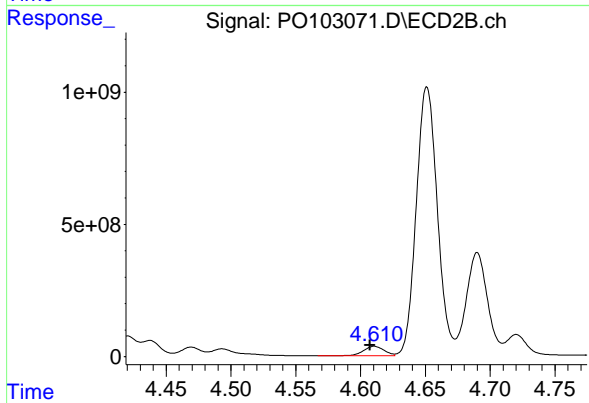
#17 AR-1242-2

R.T.: 4.437 min
 Delta R.T.: 0.002 min
 Response: 551485132
 Conc: 5653.24 ng/ml



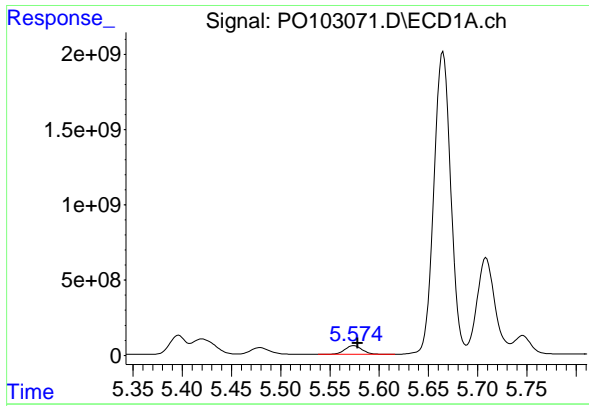
#18 AR-1242-3

R.T.: 5.479 min
 Delta R.T.: -0.003 min
 Response: 605670912
 Conc: 5356.77 ng/ml



#18 AR-1242-3

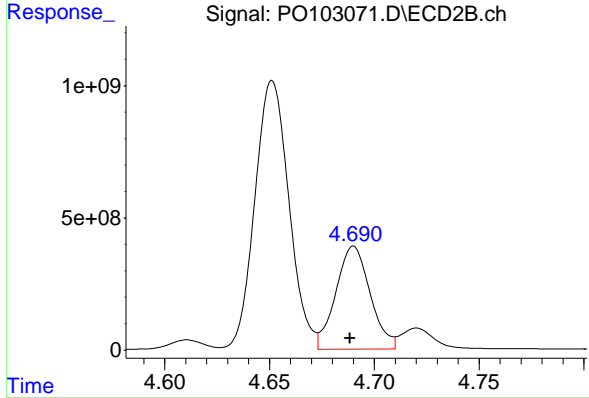
R.T.: 4.611 min
 Delta R.T.: 0.004 min
 Response: 382128807
 Conc: 7128.99 ng/ml



#19 AR-1242-4

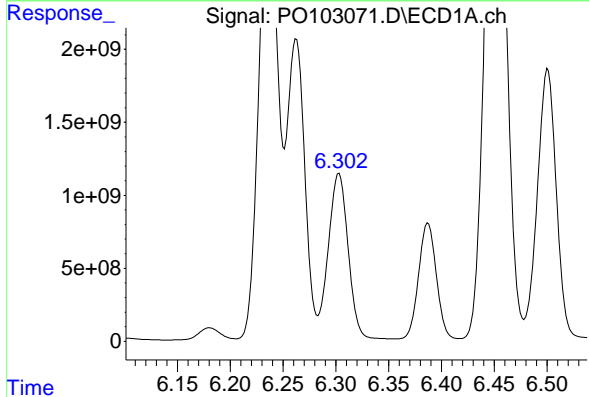
R.T.: 5.574 min
 Delta R.T.: -0.004 min
 Response: 704731625
 Conc: 7893.88 ng/ml

Instrument :
 ECD_O
 ClientSampleId :
 LNG-11



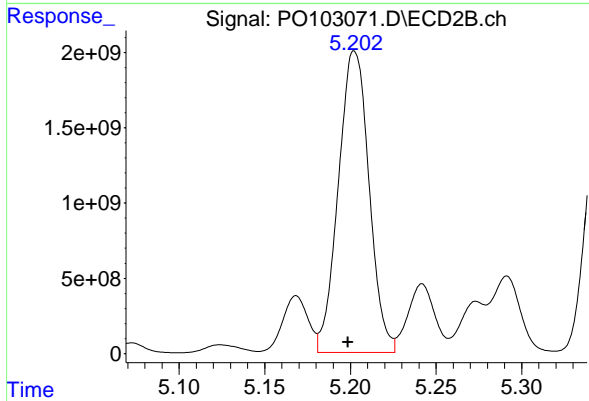
#19 AR-1242-4

R.T.: 4.690 min
 Delta R.T.: 0.002 min
 Response: 4448146036
 Conc: 80655.95 ng/ml



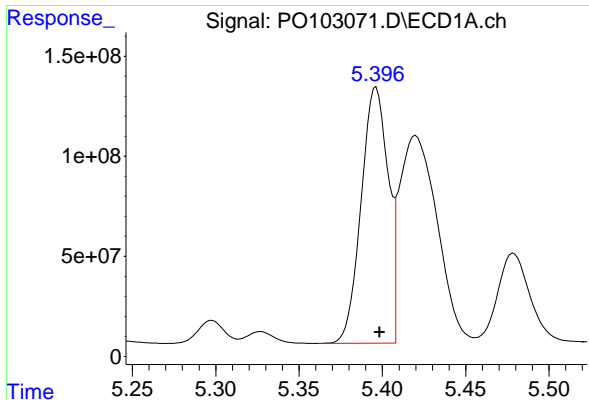
#20 AR-1242-5

R.T.: 6.301 min
 Delta R.T.: -0.002 min
 Response: 23692324767
 Conc: 283491.63 ng/ml



#20 AR-1242-5

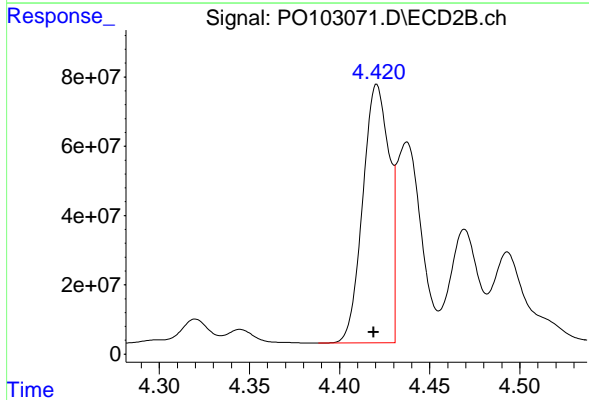
R.T.: 5.202 min
 Delta R.T.: 0.004 min
 Response: 25065926117
 Conc: 396066.74 ng/ml



#21 AR-1248-1

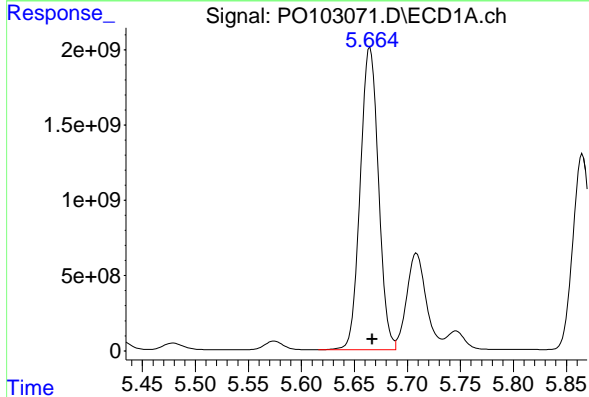
R.T.: 5.396 min
 Delta R.T.: -0.002 min
 Response: 1438618097
 Conc: 16092.82 ng/ml

Instrument :
 ECD_O
 ClientSampleId :
 LNG-11



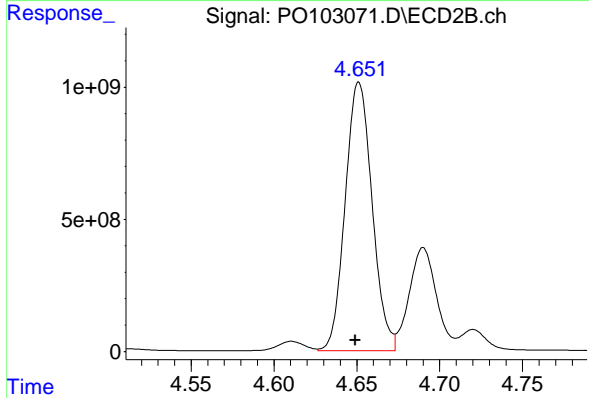
#21 AR-1248-1

R.T.: 4.421 min
 Delta R.T.: 0.002 min
 Response: 762194248
 Conc: 15348.27 ng/ml



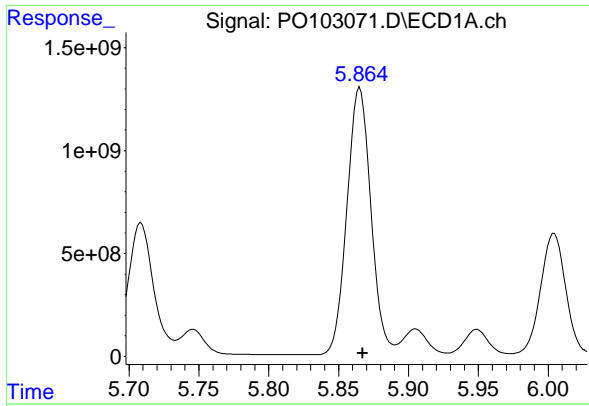
#22 AR-1248-2

R.T.: 5.665 min
 Delta R.T.: -0.002 min
 Response: 20390674658
 Conc: 147804.16 ng/ml



#22 AR-1248-2

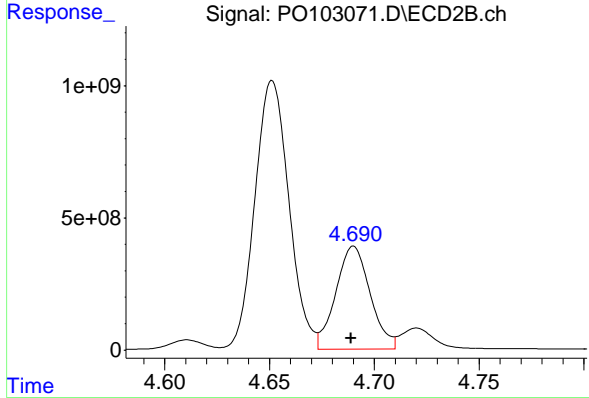
R.T.: 4.651 min
 Delta R.T.: 0.002 min
 Response: 11483847101
 Conc: 152571.07 ng/ml



#23 AR-1248-3

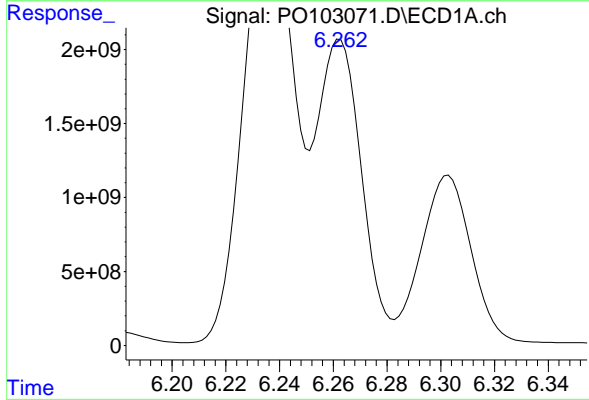
R.T.: 5.868 min
 Delta R.T.: 0.000 min
 Response: 15174626068
 Conc: 106968.29 ng

Instrument :
 ECD_O
 ClientSampleId :
 LNG-11



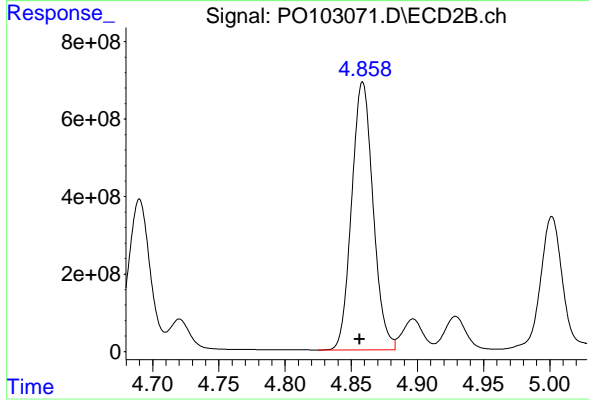
#23 AR-1248-3

R.T.: 4.690 min
 Delta R.T.: 0.001 min
 Response: 4448146036
 Conc: 57264.09 ng/ml



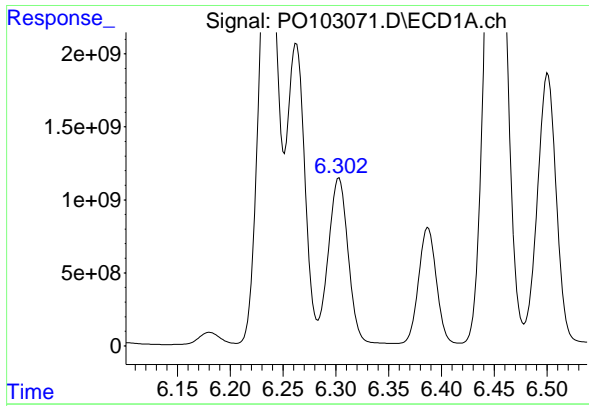
#24 AR-1248-4

R.T.: 6.260 min
 Delta R.T.: -0.005 min
 Response: 26884726247
 Conc: 189661.78 ng/ml



#24 AR-1248-4

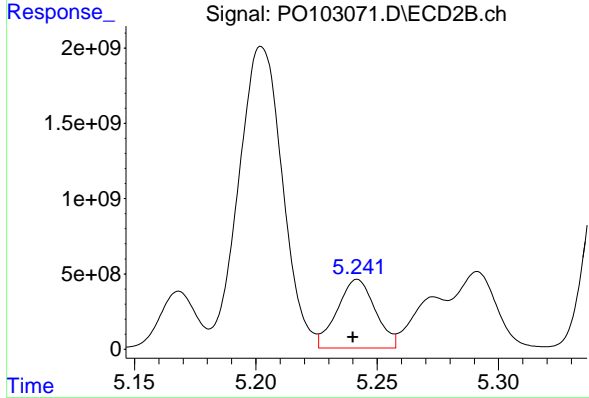
R.T.: 4.859 min
 Delta R.T.: 0.002 min
 Response: 7789519500
 Conc: 86856.49 ng/ml



#25 AR-1248-5

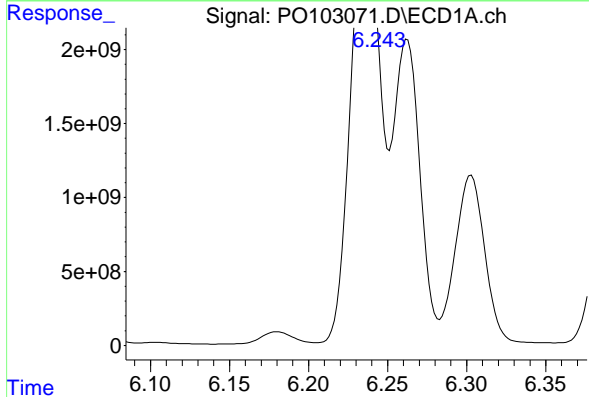
R.T.: 6.301 min
 Delta R.T.: -0.002 min
 Response: 23692324767
 Conc: 172330.85 ng

Instrument : ECD_O
 ClientSampleId : LNG-11



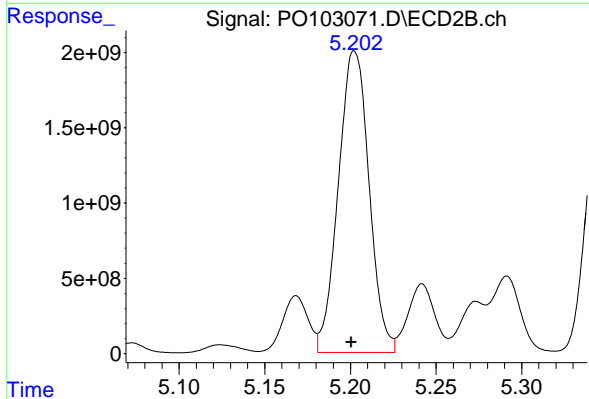
#25 AR-1248-5

R.T.: 5.242 min
 Delta R.T.: 0.002 min
 Response: 5000978066
 Conc: 62378.87 ng/ml



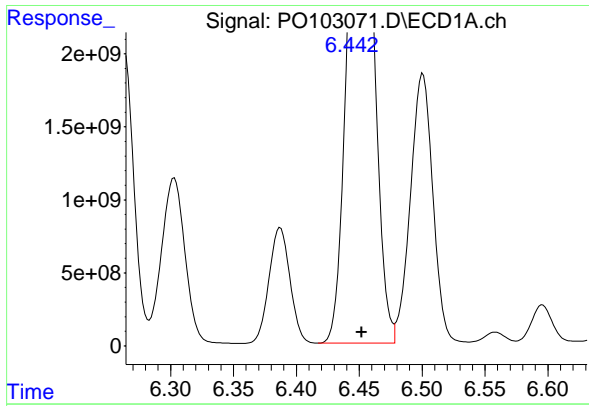
#26 AR-1254-1

R.T.: 6.236 min
 Delta R.T.: -0.001 min
 Response: 48448518396
 Conc: 305234.50 ng/ml



#26 AR-1254-1

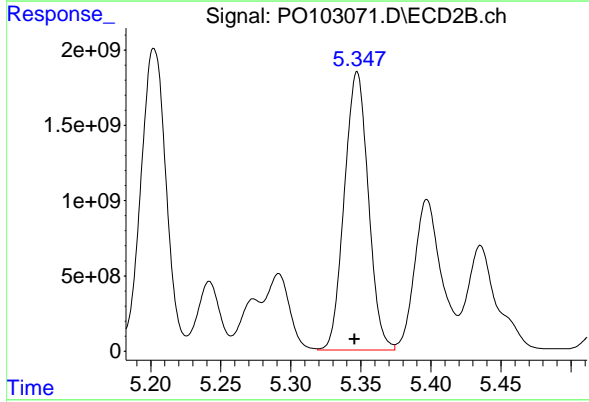
R.T.: 5.202 min
 Delta R.T.: 0.002 min
 Response: 25065926117
 Conc: 186353.01 ng/ml



#27 AR-1254-2

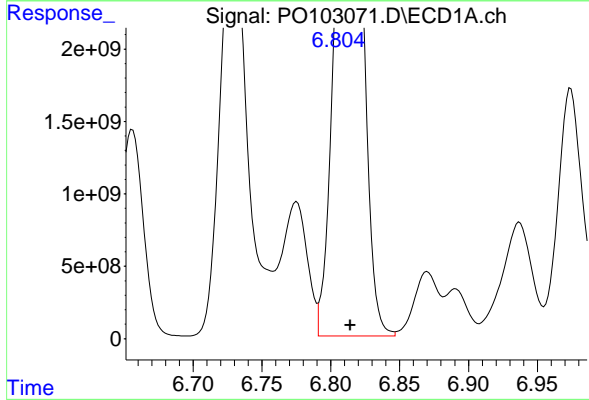
R.T.: 6.447 min
 Delta R.T.: -0.004 min
 Response: 33332834324
 Conc: 142317.30 ng

Instrument :
 ECD_O
 ClientSampleId :
 LNG-11



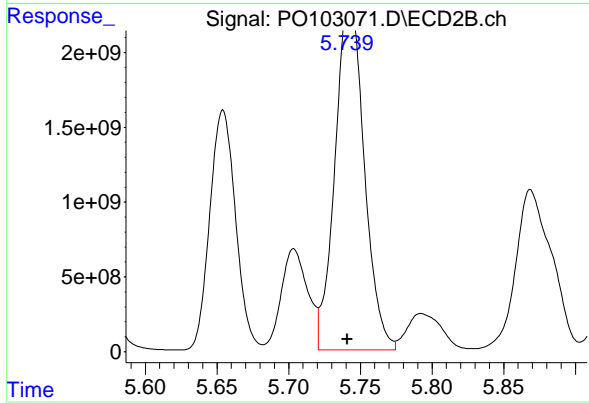
#27 AR-1254-2

R.T.: 5.347 min
 Delta R.T.: 0.002 min
 Response: 22026435016
 Conc: 186380.11 ng/ml



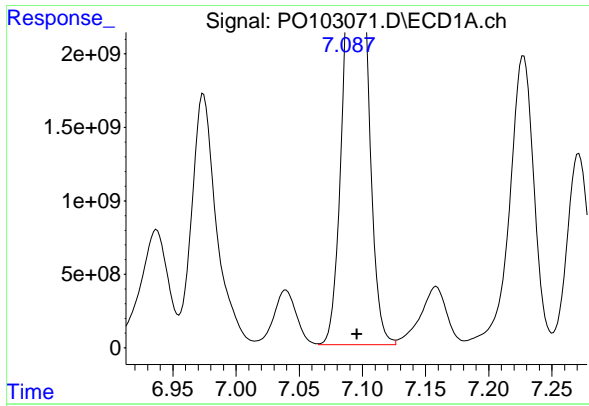
#28 AR-1254-3

R.T.: 6.804 min
 Delta R.T.: -0.010 min
 Response: 32518653136
 Conc: 140345.12 ng/ml



#28 AR-1254-3

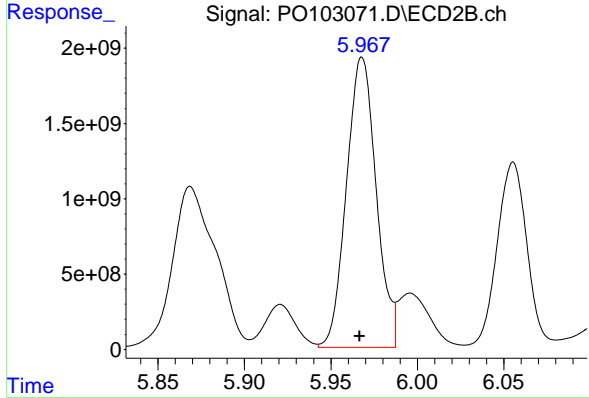
R.T.: 5.744 min
 Delta R.T.: 0.003 min
 Response: 32365341506
 Conc: 184833.51 ng/ml



#29 AR-1254-4

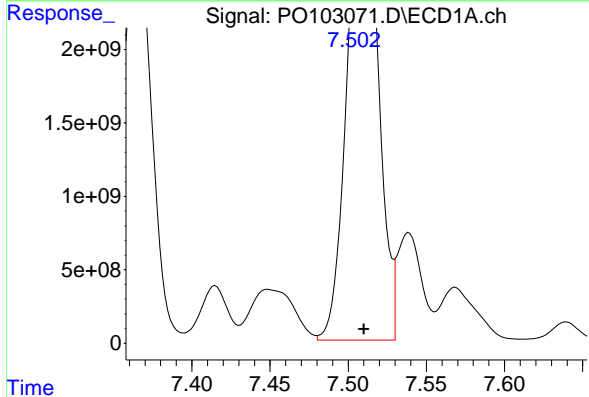
R.T.: 7.089 min
 Delta R.T.: -0.007 min
 Response: 29680352126
 Conc: 200048.21 ng

Instrument :
 ECD_O
 ClientSampleId :
 LNG-11



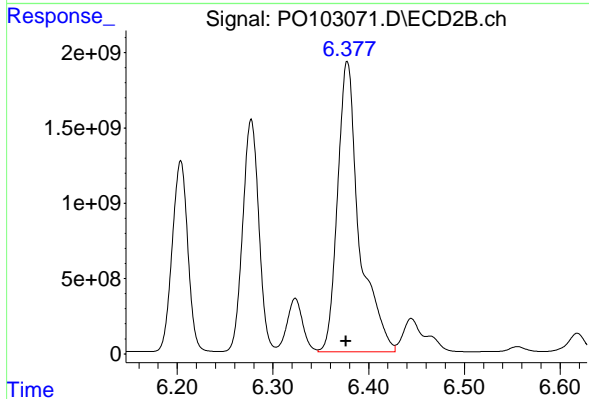
#29 AR-1254-4

R.T.: 5.968 min
 Delta R.T.: 0.001 min
 Response: 23018435448
 Conc: 226919.62 ng/ml



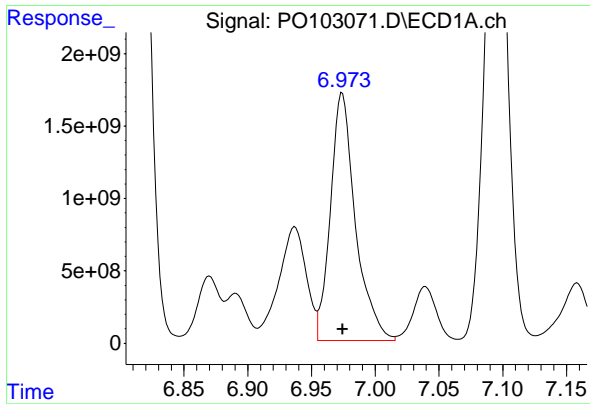
#30 AR-1254-5

R.T.: 7.504 min
 Delta R.T.: -0.006 min
 Response: 31097107036
 Conc: 186976.24 ng/ml



#30 AR-1254-5

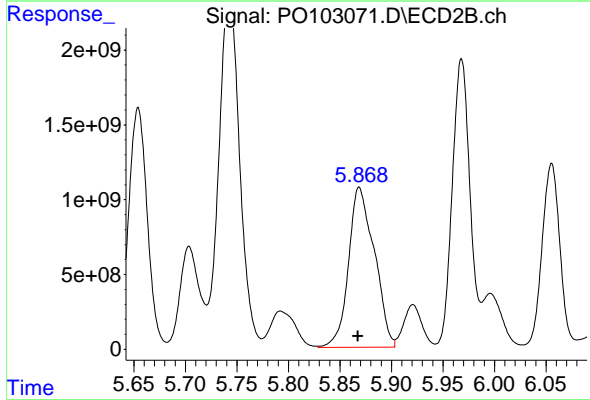
R.T.: 6.378 min
 Delta R.T.: 0.001 min
 Response: 30348560452
 Conc: 201438.98 ng/ml



#31 AR-1260-1

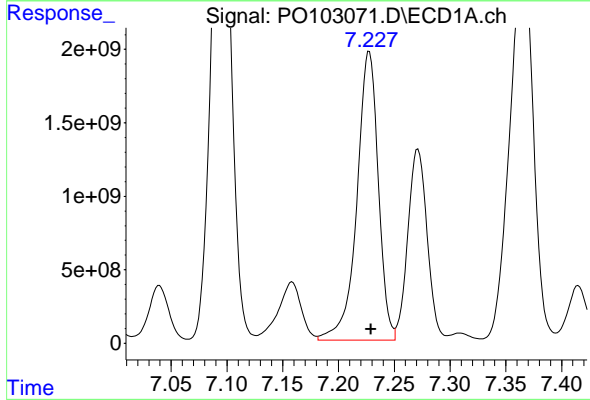
R.T.: 6.974 min
 Delta R.T.: 0.000 min
 Response: 19755218072
 Conc: 111504.75 ng

Instrument :
 ECD_O
 ClientSampleId :
 LNG-11



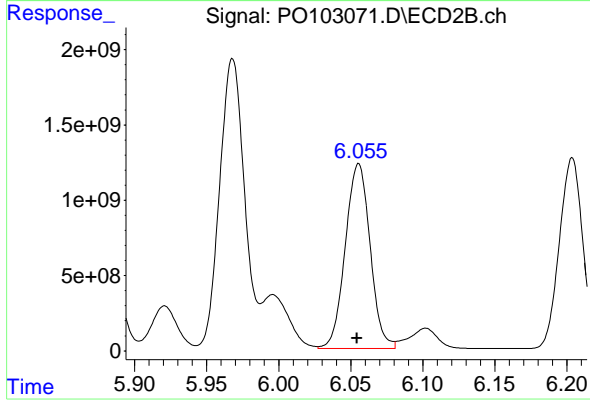
#31 AR-1260-1

R.T.: 5.869 min
 Delta R.T.: 0.000 min
 Response: 18654429549
 Conc: 146710.50 ng/ml



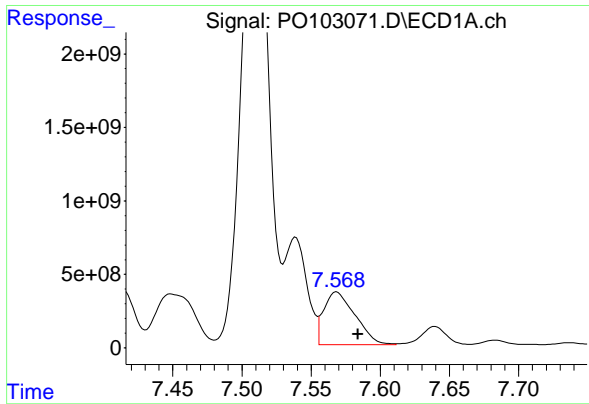
#32 AR-1260-2

R.T.: 7.228 min
 Delta R.T.: -0.001 min
 Response: 22705300738
 Conc: 114476.92 ng/ml



#32 AR-1260-2

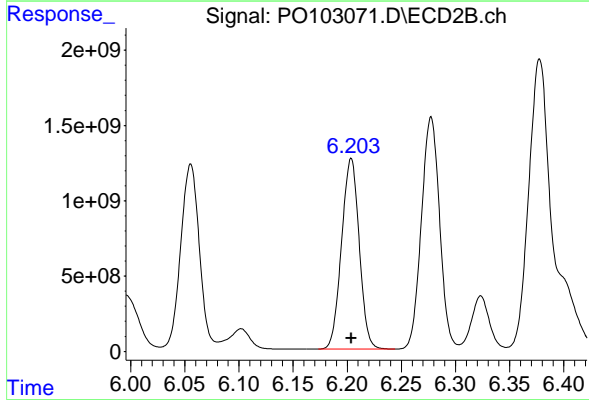
R.T.: 6.055 min
 Delta R.T.: 0.001 min
 Response: 14749688083
 Conc: 96037.09 ng/ml



#33 AR-1260-3

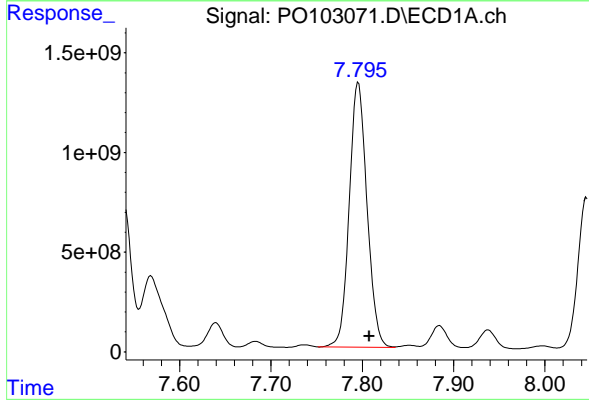
R.T.: 7.568 min
 Delta R.T.: -0.016 min
 Response: 5657950974
 Conc: 39996.54 ng/ml

Instrument :
 ECD_O
 ClientSampleId :
 LNG-11



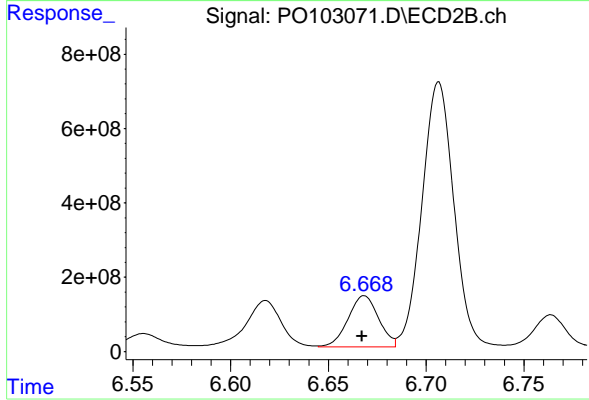
#33 AR-1260-3

R.T.: 6.204 min
 Delta R.T.: 0.000 min
 Response: 14380817253
 Conc: 103198.11 ng/ml



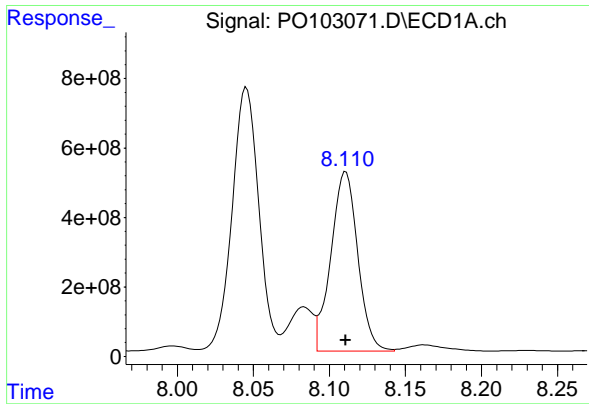
#34 AR-1260-4

R.T.: 7.796 min
 Delta R.T.: -0.011 min
 Response: 14417542743
 Conc: 92745.34 ng/ml



#34 AR-1260-4

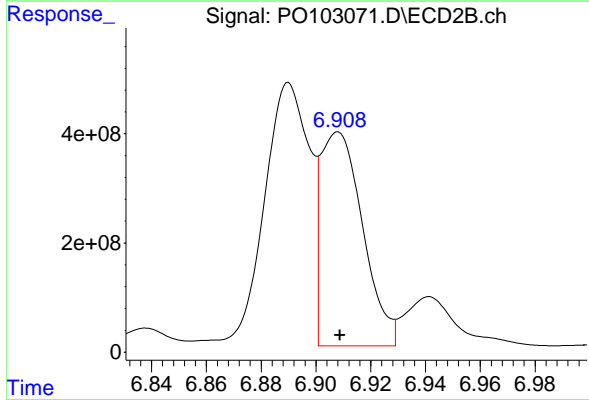
R.T.: 6.668 min
 Delta R.T.: 0.001 min
 Response: 1493872345
 Conc: 13580.75 ng/ml



#35 AR-1260-5

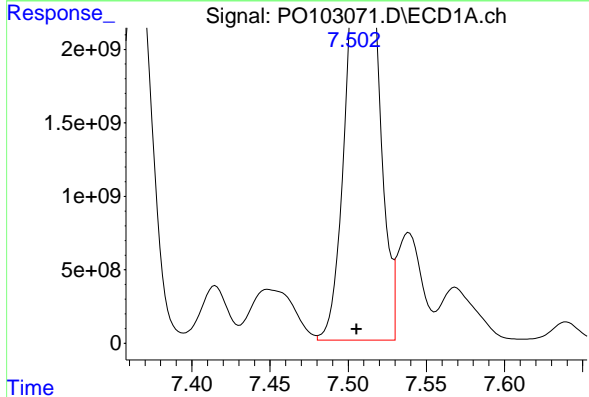
R.T.: 8.111 min
 Delta R.T.: 0.000 min
 Response: 6343467624
 Conc: 21262.58 ng/ml

Instrument :
 ECD_O
 ClientSampleId :
 LNG-11



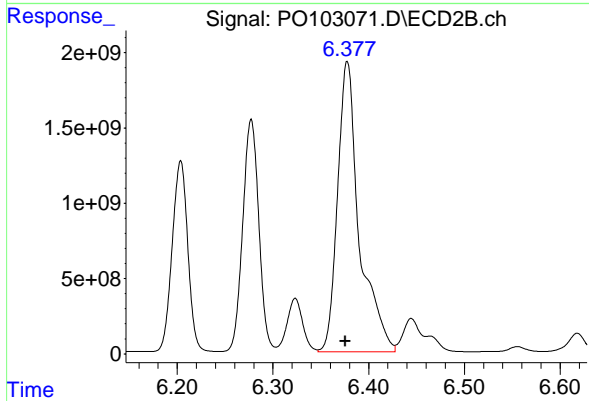
#35 AR-1260-5

R.T.: 6.908 min
 Delta R.T.: 0.000 min
 Response: 4184629578
 Conc: 16310.61 ng/ml



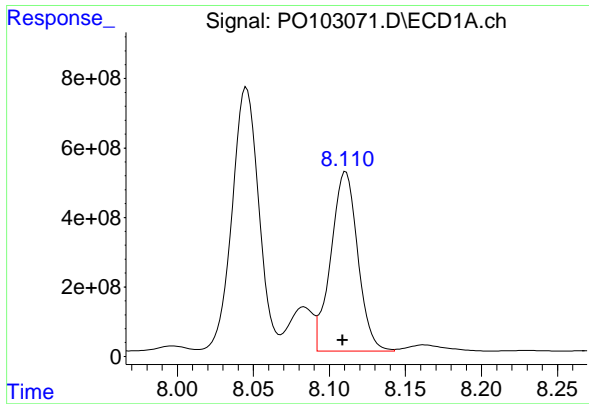
#36 AR-1262-1

R.T.: 7.504 min
 Delta R.T.: -0.001 min
 Response: 31097107036
 Conc: 227954.44 ng/ml



#36 AR-1262-1

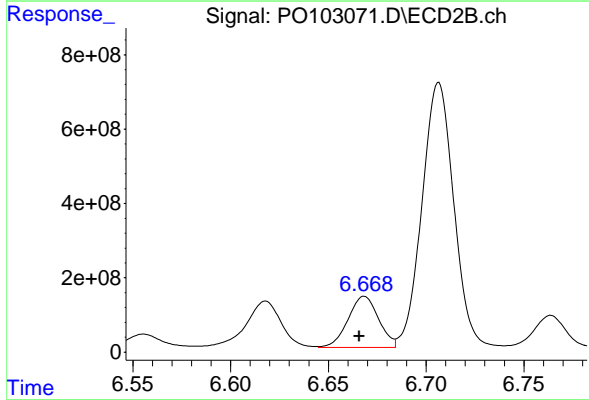
R.T.: 6.378 min
 Delta R.T.: 0.002 min
 Response: 30348560452
 Conc: 374669.14 ng/ml



#37 AR-1262-2

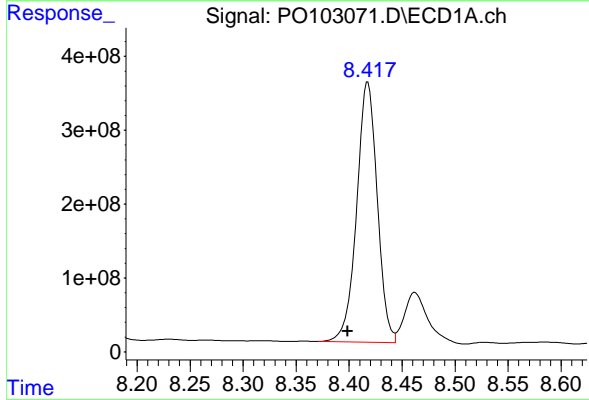
R.T.: 8.111 min
 Delta R.T.: 0.002 min
 Response: 6343467624
 Conc: 18929.48 ng/ml

Instrument :
 ECD_O
 ClientSampleId :
 LNG-11



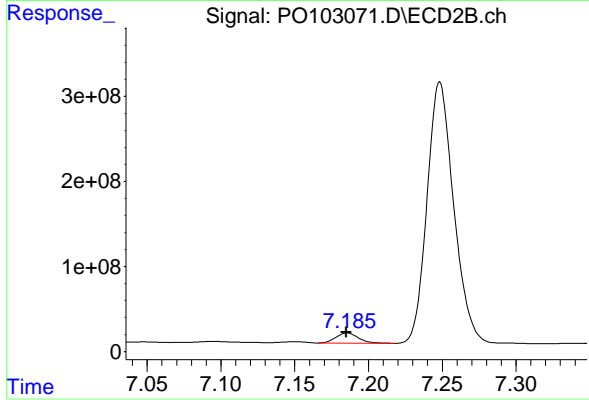
#37 AR-1262-2

R.T.: 6.668 min
 Delta R.T.: 0.002 min
 Response: 1493872345
 Conc: 10417.32 ng/ml



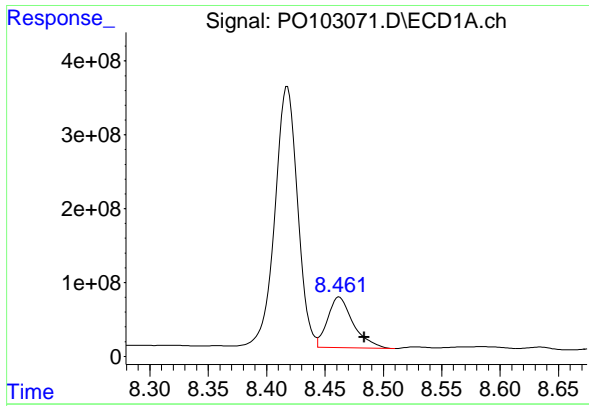
#38 AR-1262-3

R.T.: 8.418 min
 Delta R.T.: 0.019 min
 Response: 4750649083
 Conc: 21487.64 ng/ml



#38 AR-1262-3

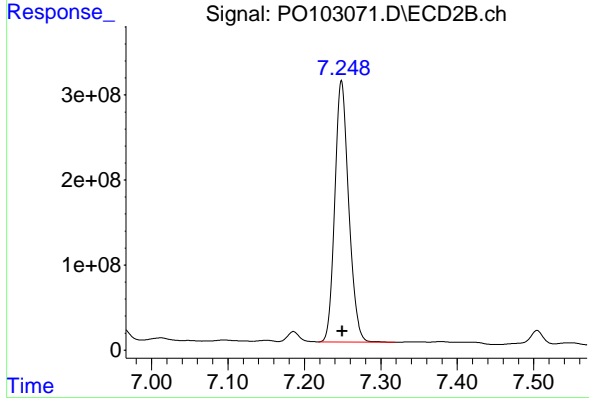
R.T.: 7.186 min
 Delta R.T.: 0.000 min
 Response: 127662417
 Conc: 1051.94 ng/ml



#39 AR-1262-4

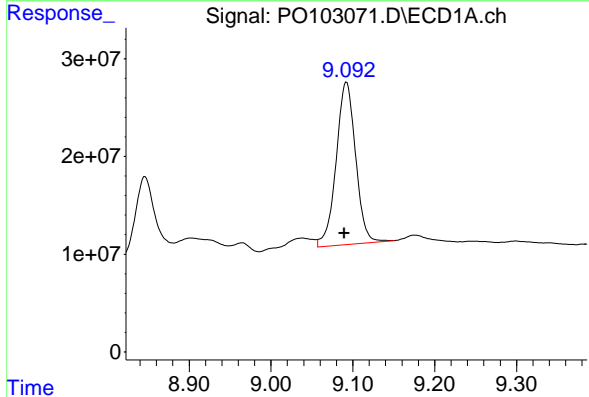
R.T.: 8.462 min
 Delta R.T.: -0.022 min
 Response: 1048920576
 Conc: 6034.47 ng/ml

Instrument :
 ECD_O
 ClientSampleId :
 LNG-11



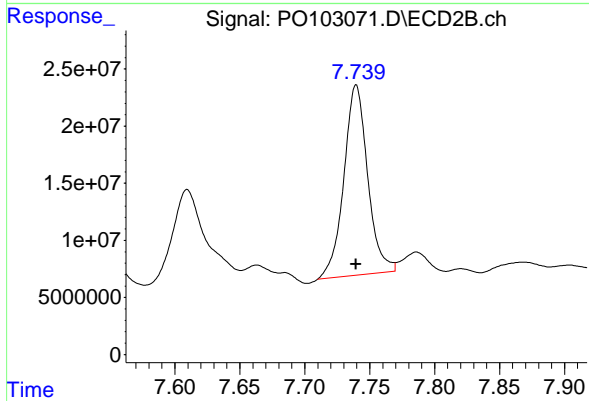
#39 AR-1262-4

R.T.: 7.248 min
 Delta R.T.: -0.001 min
 Response: 3872696007
 Conc: 18813.44 ng/ml



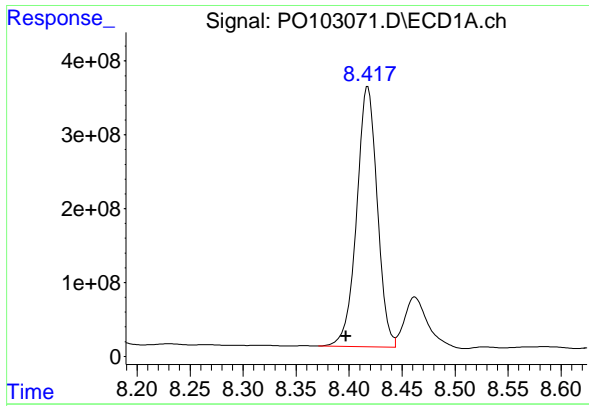
#40 AR-1262-5

R.T.: 9.092 min
 Delta R.T.: 0.003 min
 Response: 274262318
 Conc: 2336.03 ng/ml



#40 AR-1262-5

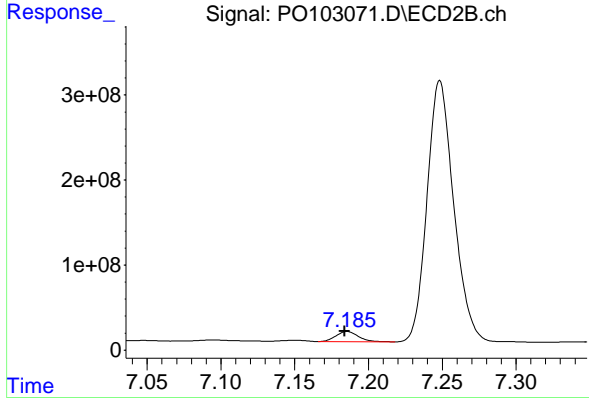
R.T.: 7.740 min
 Delta R.T.: 0.000 min
 Response: 212683841
 Conc: 2417.22 ng/ml



#41 AR-1268-1

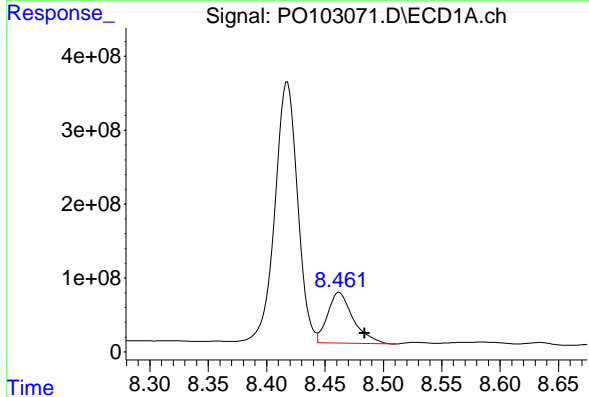
R.T.: 8.418 min
 Delta R.T.: 0.021 min
 Response: 4750649083
 Conc: 12037.74 ng/ml

Instrument :
 ECD_O
 ClientSampleId :
 LNG-11



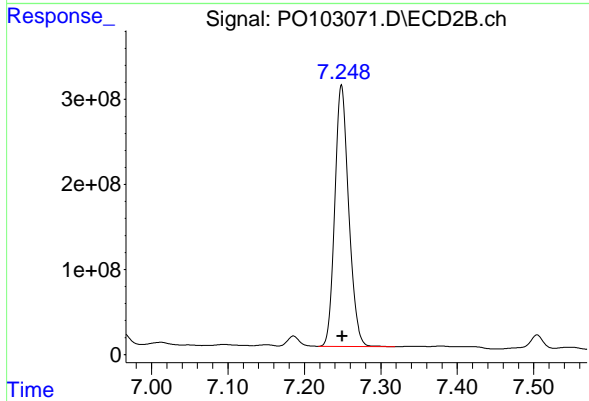
#41 AR-1268-1

R.T.: 7.186 min
 Delta R.T.: 0.002 min
 Response: 127662417
 Conc: 360.35 ng/ml



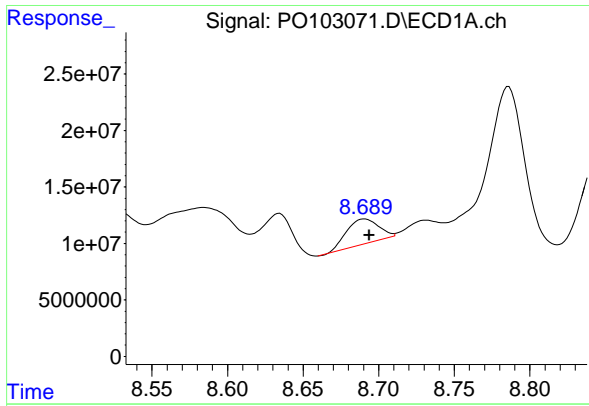
#42 AR-1268-2

R.T.: 8.462 min
 Delta R.T.: -0.022 min
 Response: 1048920576
 Conc: 2812.84 ng/ml



#42 AR-1268-2

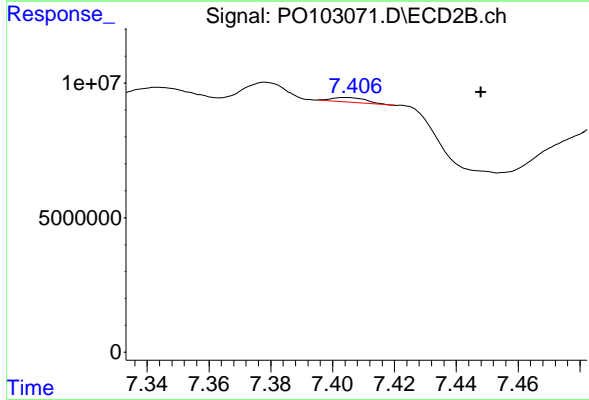
R.T.: 7.248 min
 Delta R.T.: -0.001 min
 Response: 3872696007
 Conc: 12181.29 ng/ml



#43 AR-1268-3

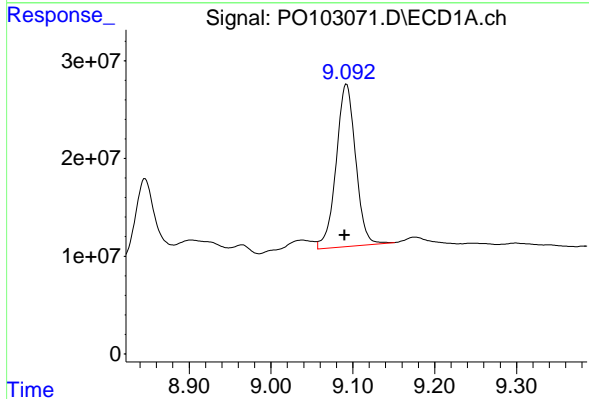
R.T.: 8.691 min
 Delta R.T.: -0.003 min
 Response: 32445030
 Conc: 97.95 ng/ml

Instrument :
 ECD_O
 ClientSampleId :
 LNG-11



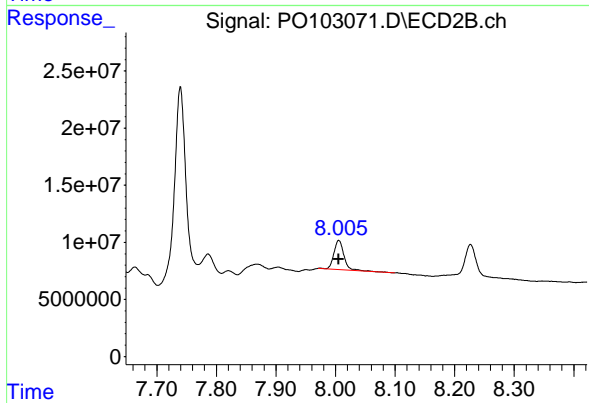
#43 AR-1268-3

R.T.: 7.404 min
 Delta R.T.: -0.044 min
 Response: 1023070
 Conc: 3.77 ng/ml



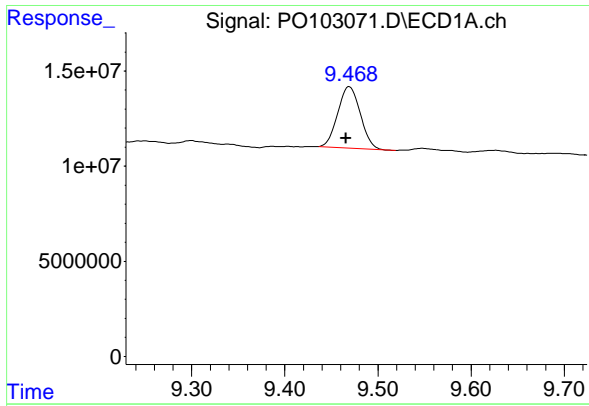
#44 AR-1268-4

R.T.: 9.092 min
 Delta R.T.: 0.002 min
 Response: 274262318
 Conc: 2102.81 ng/ml



#44 AR-1268-4

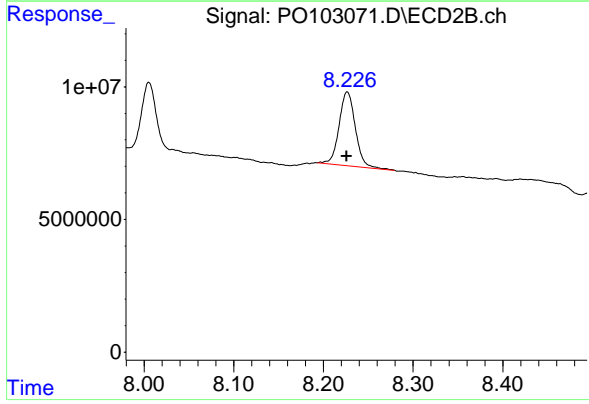
R.T.: 8.005 min
 Delta R.T.: 0.000 min
 Response: 29701956
 Conc: 41.00 ng/ml



#45 AR-1268-5

R.T.: 9.469 min
 Delta R.T.: 0.004 min
 Response: 54460890
 Conc: 51.86 ng/ml

Instrument :
 ECD_O
 ClientSampleId :
 LNG-11



#45 AR-1268-5

R.T.: 8.227 min
 Delta R.T.: 0.000 min
 Response: 34851880
 Conc: 112.43 ng/ml