

Data Path : Z:\pestpcbsrv\HPCHEM1\ECD_0\Data\P0042421\
 Data File : P0077236.D
 Signal(s) : Signal #1: ECD1A.CH Signal #2: ECD2B.CH
 Acq On : 23 Apr 2021 12:57
 Operator : DD\AJ
 Sample : M2093-01DL 20X
 Misc :
 ALS Vial : 8 Sample Multiplier: 1

Instrument :
 ECD_0
 ClientSampleId :
 HED954A-END-1DL

Integration File signal 1: autoint1.e
 Integration File signal 2: autoint2.e
 Quant Time: Apr 23 14:04:05 2021
 Quant Method : Z:\pestpcbsrv\HPCHEM1\ECD_0\methods\P0042121.M
 Quant Title : GC EXTRACTABLES
 QLast Update : Wed Apr 21 09:50:22 2021
 Response via : Initial Calibration
 Integrator: ChemStation 6890 Scale Mode: Small noise peaks clipped

Volume Inj. : 2 µl
 Signal #1 Phase : ZB-MR1 Signal #2 Phase: ZB-MR2
 Signal #1 Info : 30Mx0.32mmx 0.50µ Signal #2 Info : 30M x 0.32mm x 0.25µm

Compound	RT#1	RT#2	Resp#1	Resp#2	ng/ml	ng/ml
System Monitoring Compounds						
1) SA Tetrachlo...	4.893	3.887	123146	46232	1.165	0.879
2) SA Decachlor...	10.861	0.000	102008	0	0.983	N.D. #
Target Compounds						
3) L1 AR-1016-1	6.216	5.131	72716	7418	19.488	4.869 #
4) L1 AR-1016-2	6.242	5.131f	120890	7418	20.715	2.435 #
5) L1 AR-1016-3	6.306	0.000	93416	0	26.258	N.D. #
6) L1 AR-1016-4	6.413	5.390	76784	647899	27.698	509.283 #
7) L1 AR-1016-5	6.726	5.616	618564	364478	228.229	246.371
10) L2 AR-1221-3	5.332	0.000	31756	0	11.303	N.D. #
11) L3 AR-1232-1	5.332	0.000	31756	0	15.666	N.D. #
12) L3 AR-1232-2	5.919	5.131f	30058	7418	27.015	6.113 #
13) L3 AR-1232-3	6.242	0.000	120890	0	53.011	N.D. #
14) L3 AR-1232-4	6.413	5.433	76784	164753	74.616	288.896 #
15) L3 AR-1232-5	6.508	5.616	1123840	364478	1533.845	611.952 #
16) L4 AR-1242-1	6.216	5.131	72716	7418	26.768	6.771 #
17) L4 AR-1242-2	6.242	5.131f	120890	7418	27.404	3.265 #
18) L4 AR-1242-3	6.306	0.000	93416	0	33.682	N.D. #
19) L4 AR-1242-4	6.413	5.433	76784	164753	35.787	145.016 #
20) L4 AR-1242-5	7.197	5.993	659027	1571243	285.016	1119.819 #
21) L5 AR-1248-1	6.216	5.131	72716	7418	34.779	8.418 #
22) L5 AR-1248-2	6.508	5.390	1123840	647899	370.427	394.344
23) L5 AR-1248-3	6.726	5.433	618564	164753	176.480	102.541 #
24) L5 AR-1248-4	7.155	5.616	1014198	364478	250.951	194.226
25) L5 AR-1248-5	7.197	6.038	659027	173163	161.314	81.337 #
26) L6 AR-1254-1	7.123	5.993	1981287	1571243	481.810	544.325
27) L6 AR-1254-2	7.352	6.152	3214352	1410799	496.637	546.447
28) L6 AR-1254-3	7.734	6.568	3375768	2128028	498.867	543.913
29) L6 AR-1254-4	8.031	6.808	2524225	1247548	513.285	549.086
30) L6 AR-1254-5	8.458	7.232	2611422	1689990	469.095	466.104
31) L7 AR-1260-1	7.901	6.704	1417019	1052709	261.894	352.626 #
32) L7 AR-1260-2	8.166	6.901	1559026	815940	246.901	228.875
33) L7 AR-1260-3	8.522	7.051	314480	858374	77.044	261.038 #
34) L7 AR-1260-4	8.754	7.532	937460	89862	193.787	38.153 #
35) L7 AR-1260-5	9.084	7.781	301132	139759	32.383	26.035
36) L8 AR-1262-1	8.522	7.232	314480	1689990	46.841	904.972 #
37) L8 AR-1262-2	9.084	7.781	301132	139759	25.923	22.516
38) L8 AR-1262-3	9.411f	0.000	228808	0	29.709	N.D. #
39) L8 AR-1262-4	9.460f	8.125	64838	154037	10.789	34.460 #
41) L9 AR-1268-1	9.411f	0.000	228808	0	16.078	N.D. #
42) L9 AR-1268-2	9.460f	8.125	64838	154037	4.917	23.981 #

Data Path : Z:\pestpcbsrv\HPCHEM1\ECD_0\Data\P0042421\
Data File : P0077236.D
Signal(s) : Signal #1: ECD1A.CH Signal #2: ECD2B.CH
Acq On : 23 Apr 2021 12:57
Operator : DD\AJ
Sample : M2093-01DL 20X
Misc :
ALS Vial : 8 Sample Multiplier: 1

Instrument :
ECD_O
ClientSampleId :
HED954A-END-1DL

Integration File signal 1: autoint1.e
Integration File signal 2: autoint2.e
Quant Time: Apr 23 14:04:05 2021
Quant Method : Z:\pestpcbsrv\HPCHEM1\ECD_0\methods\P0042121.M
Quant Title : GC EXTRACTABLES
QLast Update : Wed Apr 21 09:50:22 2021
Response via : Initial Calibration
Integrator: ChemStation 6890 Scale Mode: Small noise peaks clipped

Volume Inj. : 2 µl
Signal #1 Phase : ZB-MR1 Signal #2 Phase: ZB-MR2
Signal #1 Info : 30Mx0.32mmx 0.50µ Signal #2 Info : 30M x 0.32mm x 0.25µm

Compound	RT#1	RT#2	Resp#1	Resp#2	ng/ml	ng/ml
----------	------	------	--------	--------	-------	-------

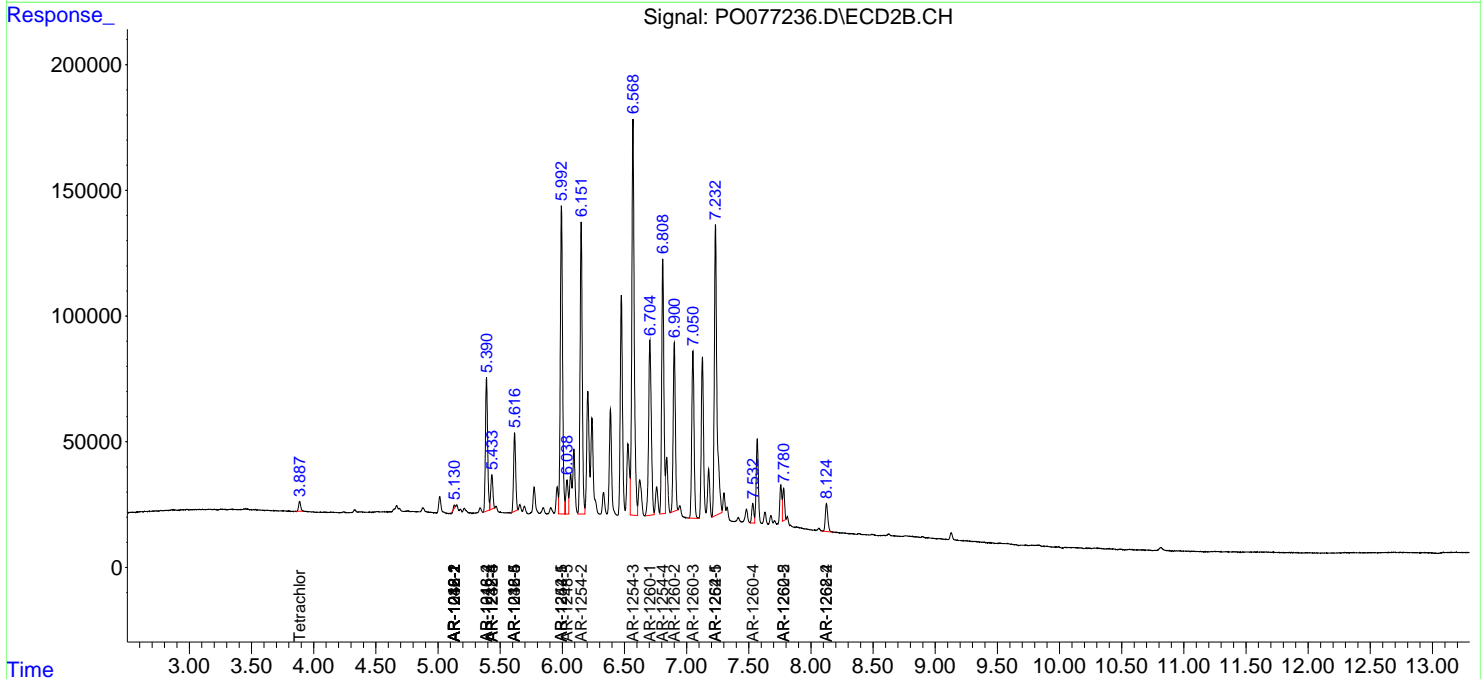
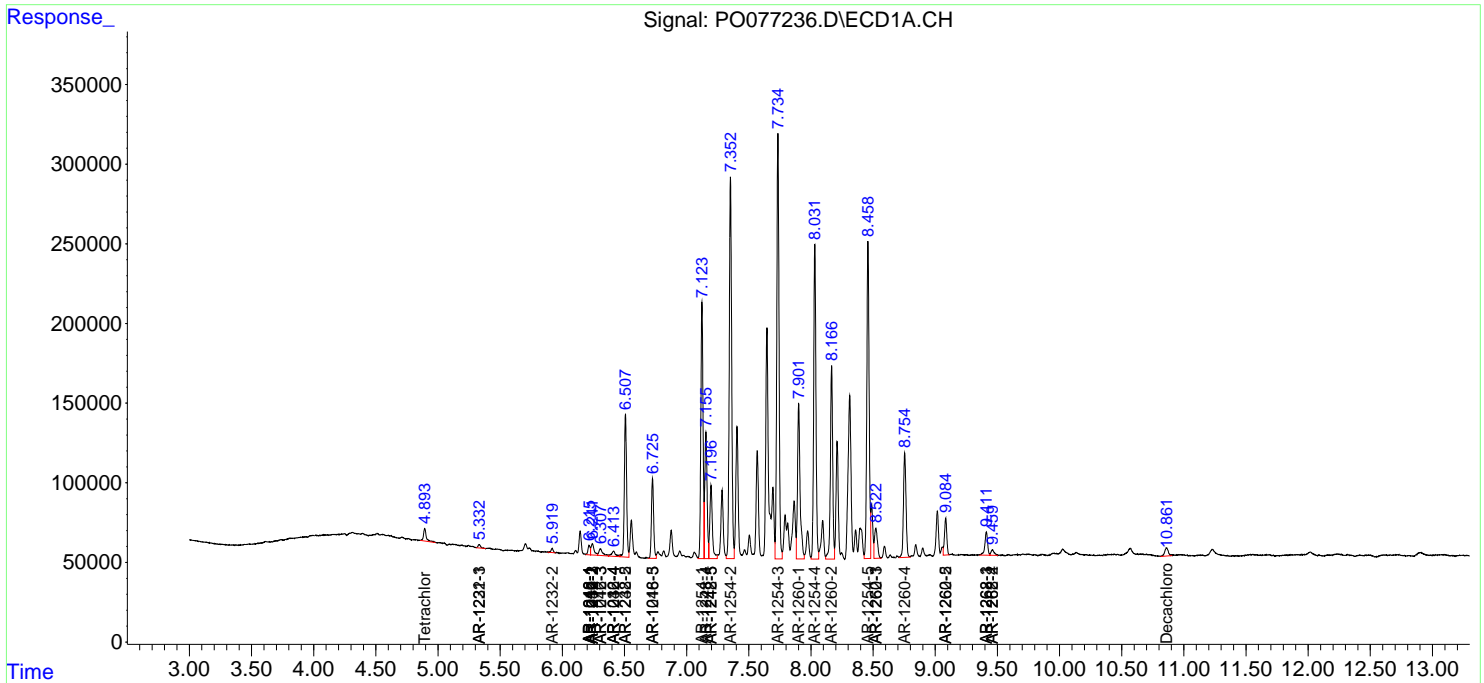
(f)=RT Delta > 1/2 Window (#)=Amounts differ by > 25% (m)=manual int.

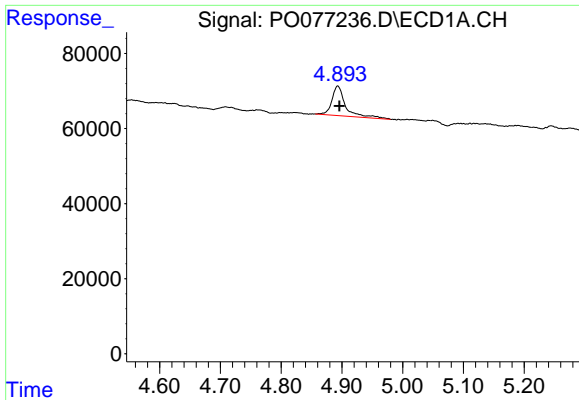
Data Path : Z:\pestpcbsrv\HPCHEM1\ECD_0\Data\P0042421\
 Data File : P0077236.D
 Signal(s) : Signal #1: ECD1A.CH Signal #2: ECD2B.CH
 Acq On : 23 Apr 2021 12:57
 Operator : DD\AJ
 Sample : M2093-01DL 20X
 Misc :
 ALS Vial : 8 Sample Multiplier: 1

Instrument :
 ECD_O
 ClientSampleId :
 HED954A-END-1DL

Integration File signal 1: autoint1.e
 Integration File signal 2: autoint2.e
 Quant Time: Apr 23 14:04:05 2021
 Quant Method : Z:\pestpcbsrv\HPCHEM1\ECD_0\methods\P0042121.M
 Quant Title : GC EXTRACTABLES
 QLast Update : Wed Apr 21 09:50:22 2021
 Response via : Initial Calibration
 Integrator: ChemStation 6890 Scale Mode: Small noise peaks clipped

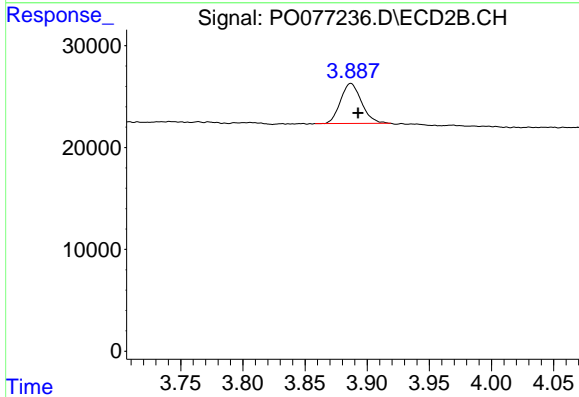
Volume Inj. : 2 µl
 Signal #1 Phase : ZB-MR1 Signal #2 Phase: ZB-MR2
 Signal #1 Info : 30Mx0.32mmx 0.50µ Signal #2 Info : 30M x 0.32mm x 0.25µm



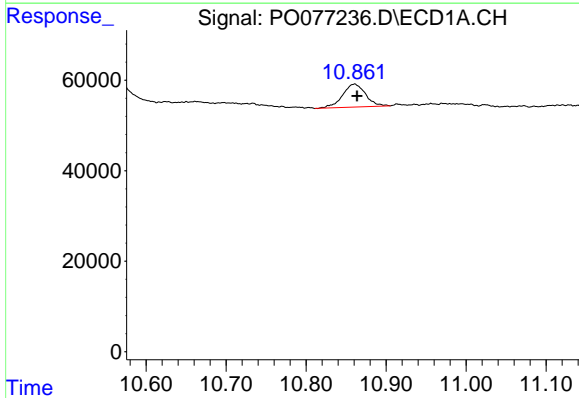


#1 Tetrachloro-m-xylene
 R.T.: 4.893 min
 Delta R.T.: -0.003 min
 Response: 123146
 Conc: 1.17 ng/ml

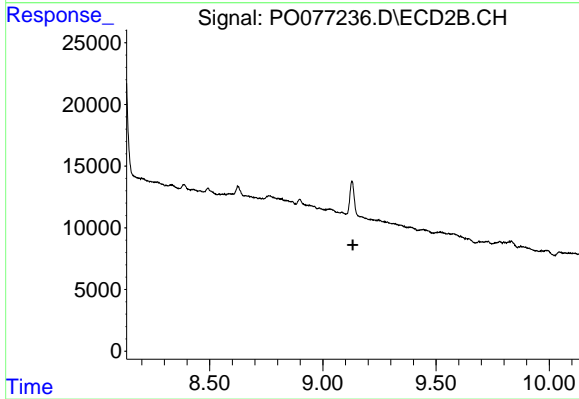
Instrument :
 ECD_O
 ClientSampleId :
 HED954A-END-1DL



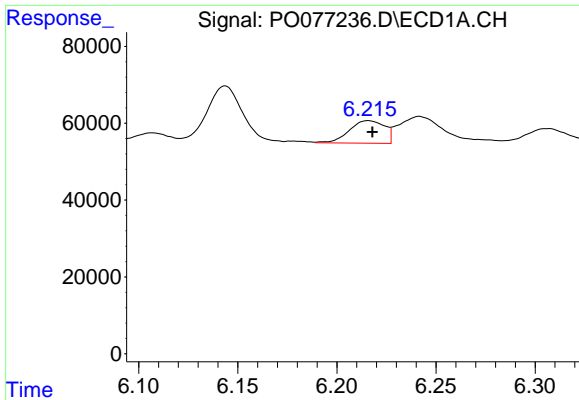
#1 Tetrachloro-m-xylene
 R.T.: 3.887 min
 Delta R.T.: -0.006 min
 Response: 46232
 Conc: 0.88 ng/ml



#2 Decachlorobiphenyl
 R.T.: 10.861 min
 Delta R.T.: -0.003 min
 Response: 102008
 Conc: 0.98 ng/ml



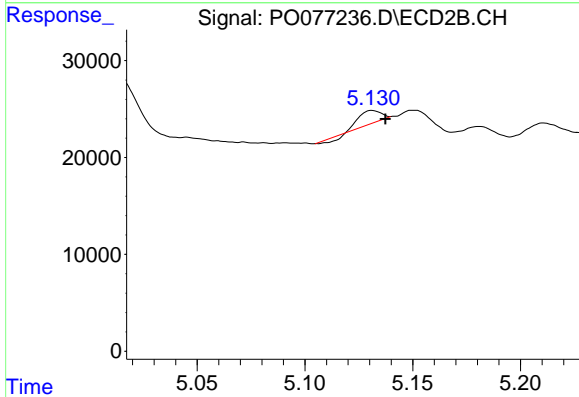
#2 Decachlorobiphenyl
 R.T.: 0.000 min
 Exp R.T. : 9.132 min
 Response: 0
 Conc: N.D.



#3 AR-1016-1

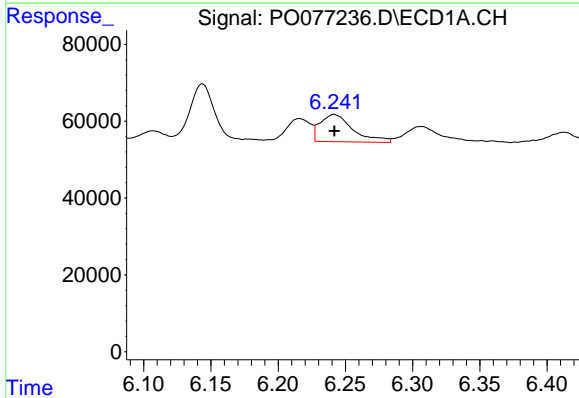
R.T.: 6.216 min
 Delta R.T.: -0.002 min
 Response: 72716
 Conc: 19.49 ng/ml

Instrument :
 ECD_O
 ClientSampleId :
 HED954A-END-1DL



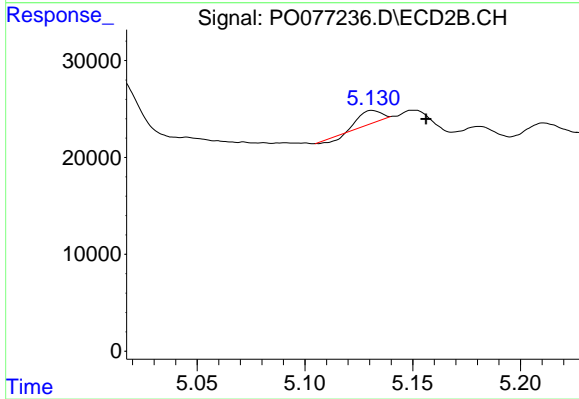
#3 AR-1016-1

R.T.: 5.131 min
 Delta R.T.: -0.006 min
 Response: 7418
 Conc: 4.87 ng/ml



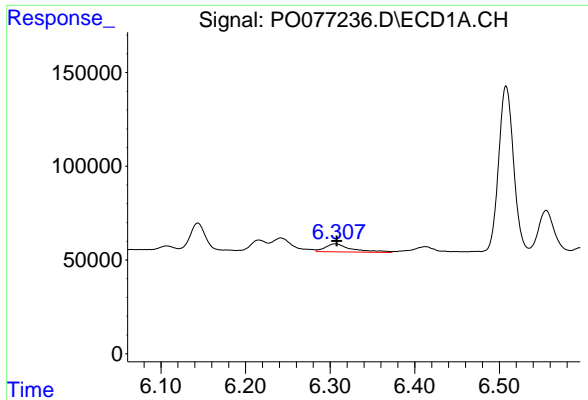
#4 AR-1016-2

R.T.: 6.242 min
 Delta R.T.: 0.000 min
 Response: 120890
 Conc: 20.72 ng/ml



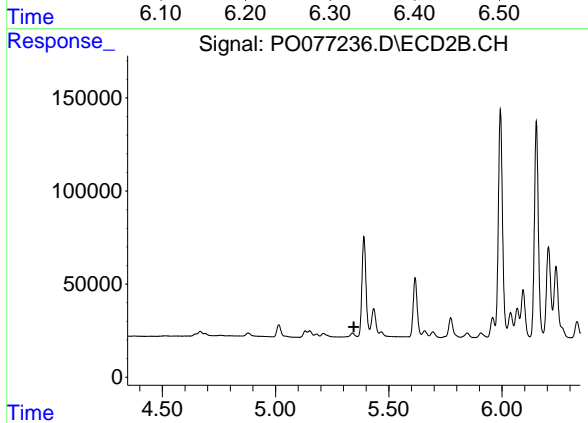
#4 AR-1016-2

R.T.: 5.131 min
 Delta R.T.: -0.025 min
 Response: 7418
 Conc: 2.43 ng/ml

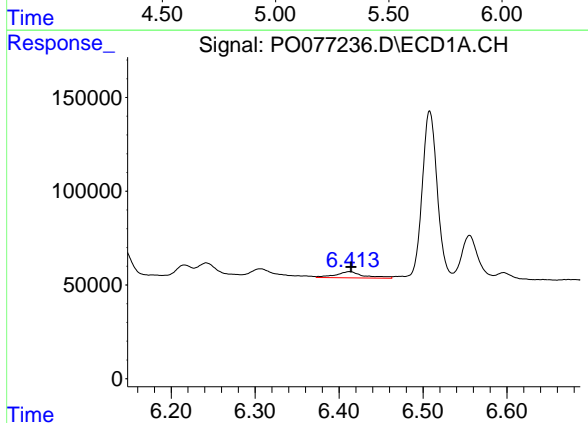


#5 AR-1016-3
 R.T.: 6.306 min
 Delta R.T.: -0.001 min
 Response: 93416
 Conc: 26.26 ng/ml

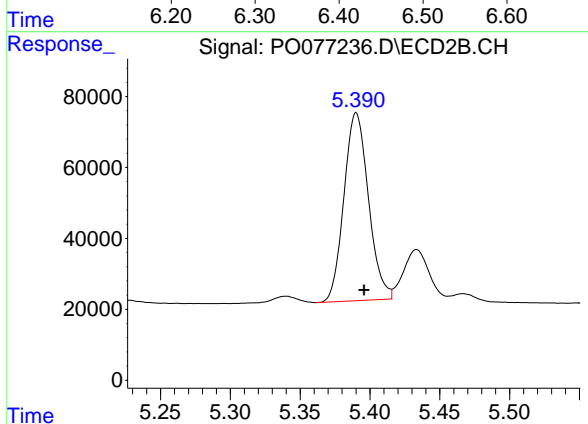
Instrument :
 ECD_O
 ClientSampleId :
 HED954A-END-1DL



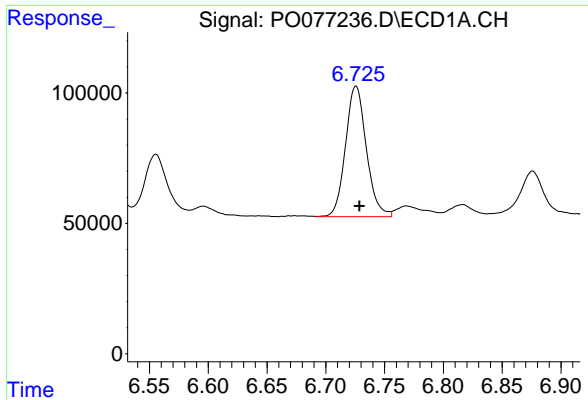
#5 AR-1016-3
 R.T.: 0.000 min
 Exp R.T. : 5.346 min
 Response: 0
 Conc: N.D.



#6 AR-1016-4
 R.T.: 6.413 min
 Delta R.T.: -0.002 min
 Response: 76784
 Conc: 27.70 ng/ml



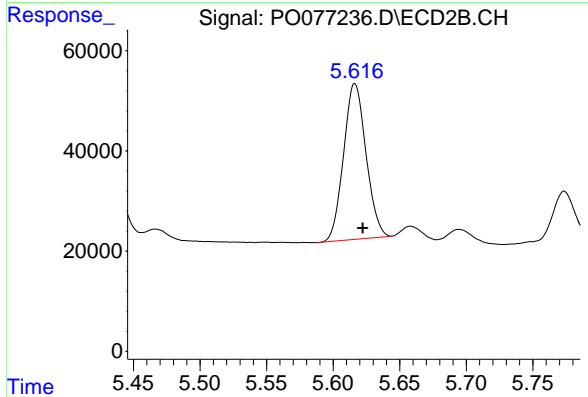
#6 AR-1016-4
 R.T.: 5.390 min
 Delta R.T.: -0.006 min
 Response: 647899
 Conc: 509.28 ng/ml



#7 AR-1016-5

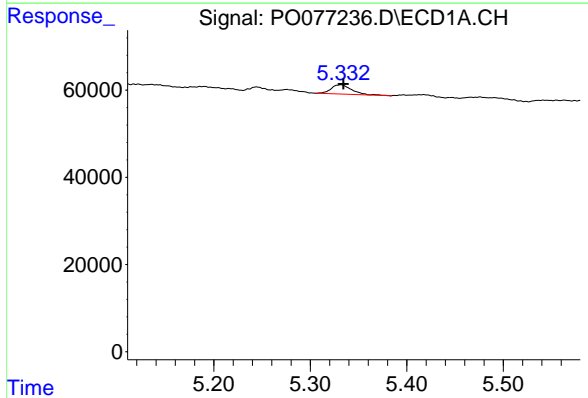
R.T.: 6.726 min
 Delta R.T.: -0.003 min
 Response: 618564
 Conc: 228.23 ng/ml

Instrument :
 ECD_O
 ClientSampleId :
 HED954A-END-1DL



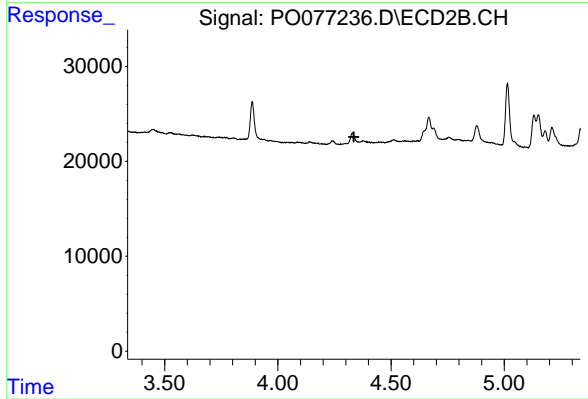
#7 AR-1016-5

R.T.: 5.616 min
 Delta R.T.: -0.006 min
 Response: 364478
 Conc: 246.37 ng/ml



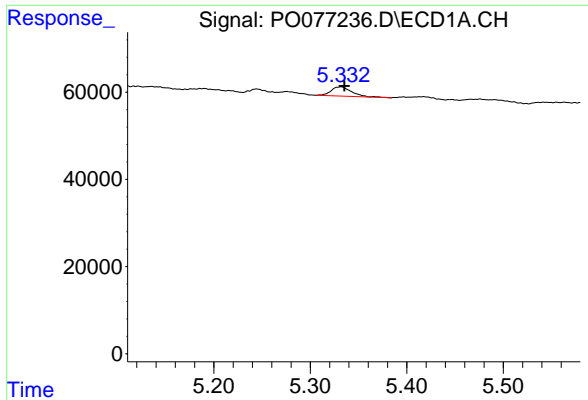
#10 AR-1221-3

R.T.: 5.332 min
 Delta R.T.: -0.002 min
 Response: 31756
 Conc: 11.30 ng/ml



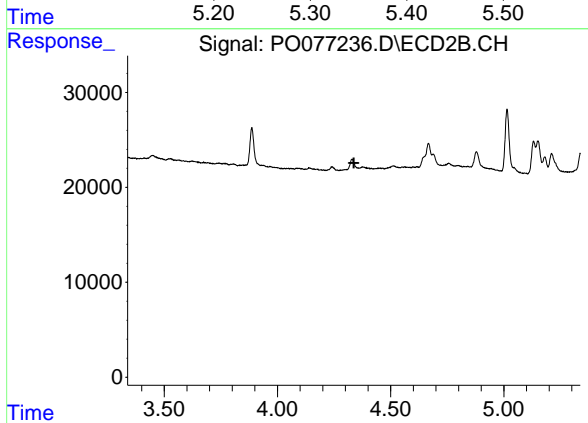
#10 AR-1221-3

R.T.: 0.000 min
 Exp R.T. : 4.336 min
 Response: 0
 Conc: N.D.

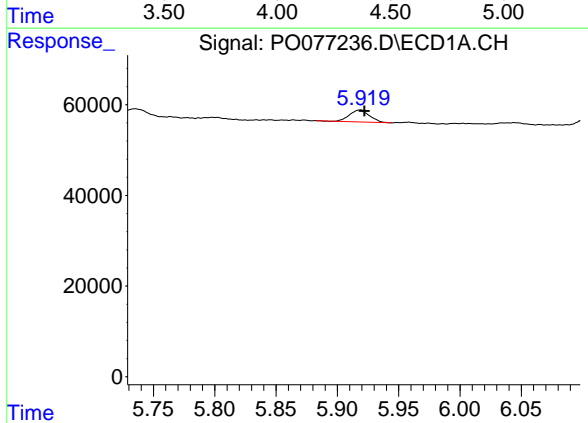


#11 AR-1232-1
 R.T.: 5.332 min
 Delta R.T.: -0.004 min
 Response: 31756
 Conc: 15.67 ng/ml

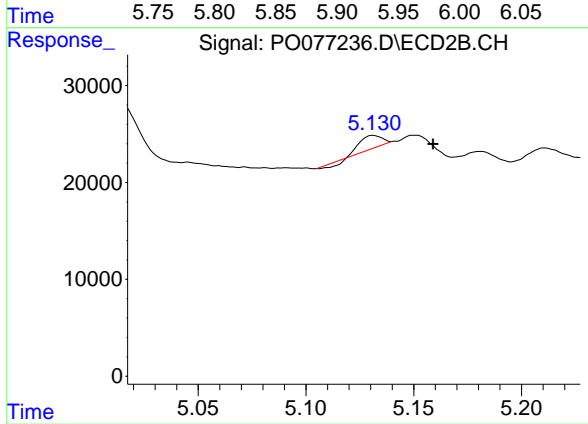
Instrument :
 ECD_O
 ClientSampleId :
 HED954A-END-1DL



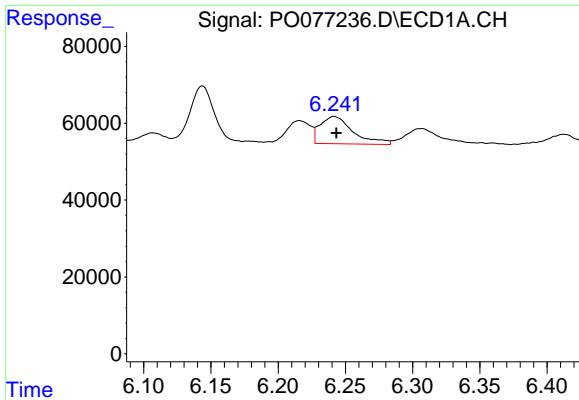
#11 AR-1232-1
 R.T.: 0.000 min
 Exp R.T. : 4.337 min
 Response: 0
 Conc: N.D.



#12 AR-1232-2
 R.T.: 5.919 min
 Delta R.T.: -0.003 min
 Response: 30058
 Conc: 27.01 ng/ml



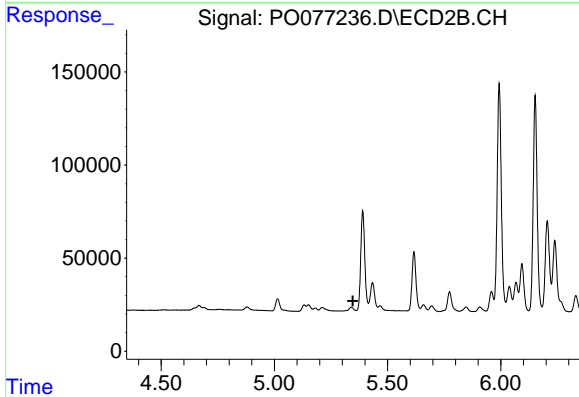
#12 AR-1232-2
 R.T.: 5.131 min
 Delta R.T.: -0.028 min
 Response: 7418
 Conc: 6.11 ng/ml



#13 AR-1232-3

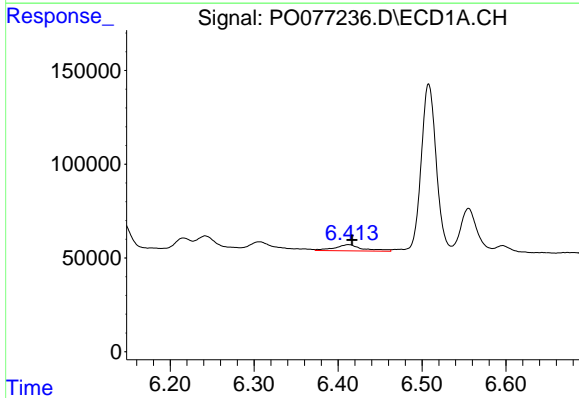
R.T.: 6.242 min
 Delta R.T.: -0.002 min
 Response: 120890
 Conc: 53.01 ng/ml

Instrument :
 ECD_O
ClientSampleId :
 HED954A-END-1DL



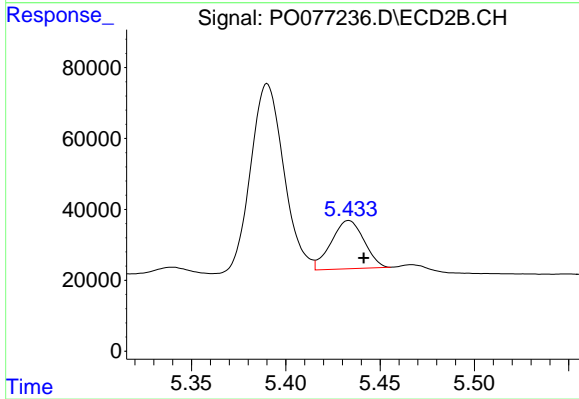
#13 AR-1232-3

R.T.: 0.000 min
 Exp R.T. : 5.347 min
 Response: 0
 Conc: N.D.



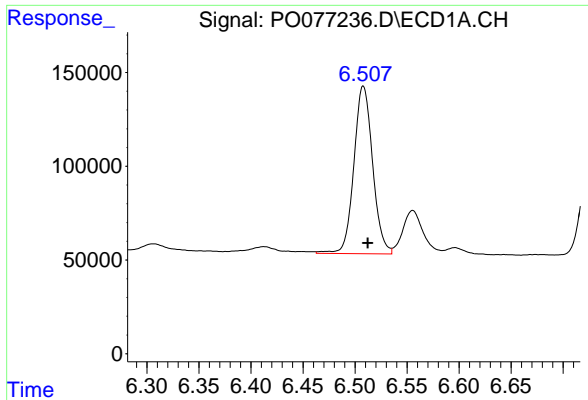
#14 AR-1232-4

R.T.: 6.413 min
 Delta R.T.: -0.004 min
 Response: 76784
 Conc: 74.62 ng/ml



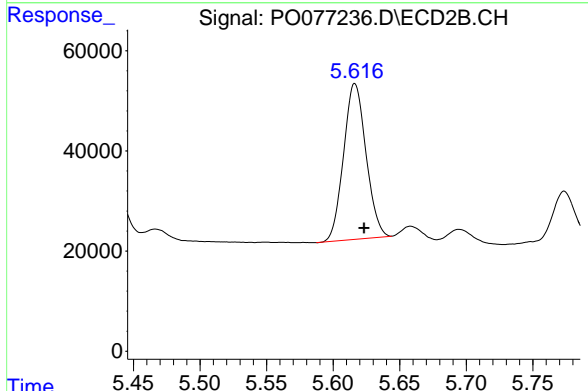
#14 AR-1232-4

R.T.: 5.433 min
 Delta R.T.: -0.008 min
 Response: 164753
 Conc: 288.90 ng/ml

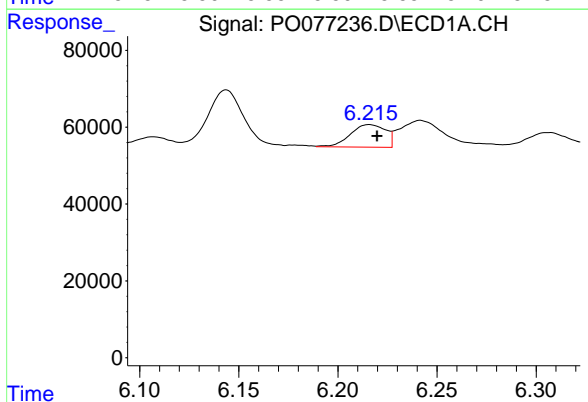


#15 AR-1232-5
 R.T.: 6.508 min
 Delta R.T.: -0.004 min
 Response: 1123840
 Conc: 1533.85 ng/ml

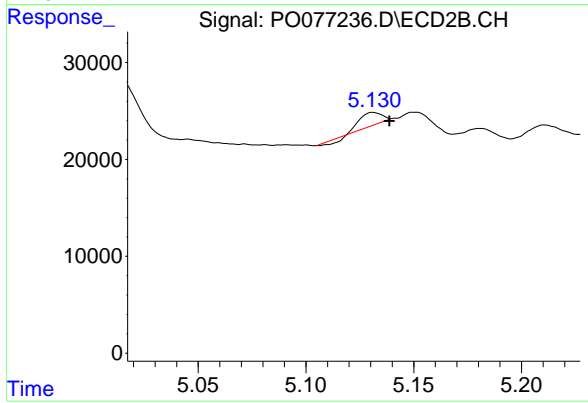
Instrument :
 ECD_O
ClientSampleId :
 HED954A-END-1DL



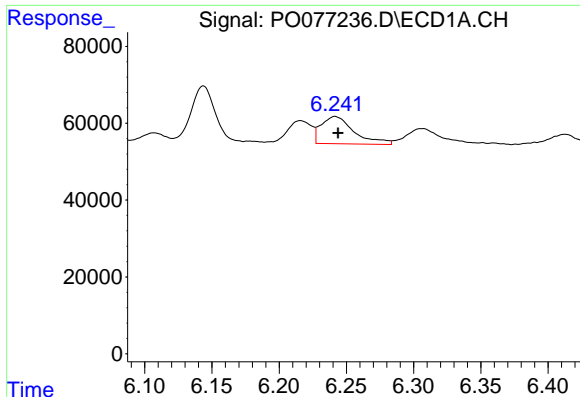
#15 AR-1232-5
 R.T.: 5.616 min
 Delta R.T.: -0.007 min
 Response: 364478
 Conc: 611.95 ng/ml



#16 AR-1242-1
 R.T.: 6.216 min
 Delta R.T.: -0.004 min
 Response: 72716
 Conc: 26.77 ng/ml



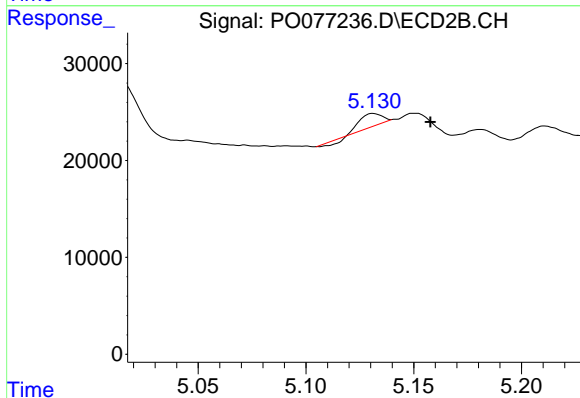
#16 AR-1242-1
 R.T.: 5.131 min
 Delta R.T.: -0.007 min
 Response: 7418
 Conc: 6.77 ng/ml



#17 AR-1242-2

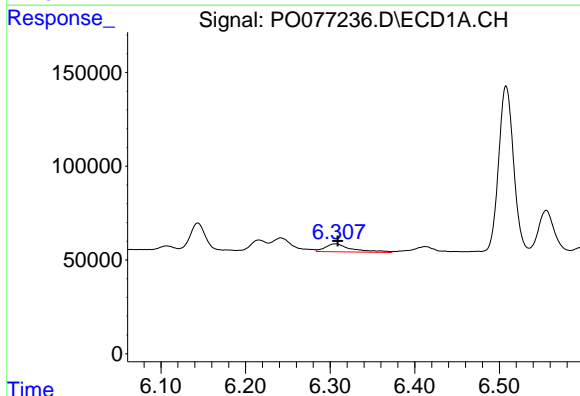
R.T.: 6.242 min
 Delta R.T.: -0.002 min
 Response: 120890
 Conc: 27.40 ng/ml

Instrument :
 ECD_O
 ClientSampleId :
 HED954A-END-1DL



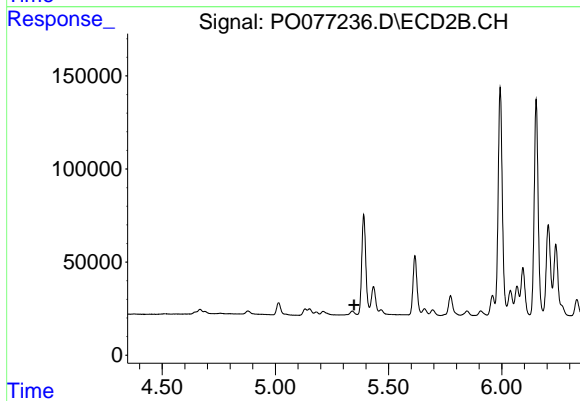
#17 AR-1242-2

R.T.: 5.131 min
 Delta R.T.: -0.027 min
 Response: 7418
 Conc: 3.26 ng/ml



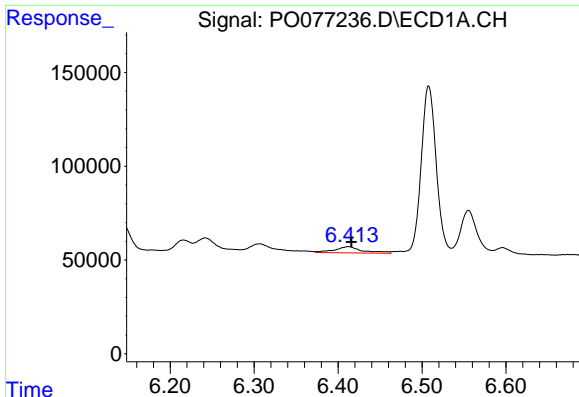
#18 AR-1242-3

R.T.: 6.306 min
 Delta R.T.: -0.003 min
 Response: 93416
 Conc: 33.68 ng/ml



#18 AR-1242-3

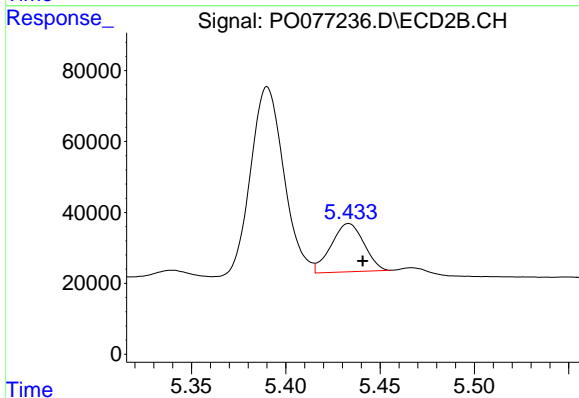
R.T.: 0.000 min
 Exp R.T. : 5.347 min
 Response: 0
 Conc: N.D.



#19 AR-1242-4

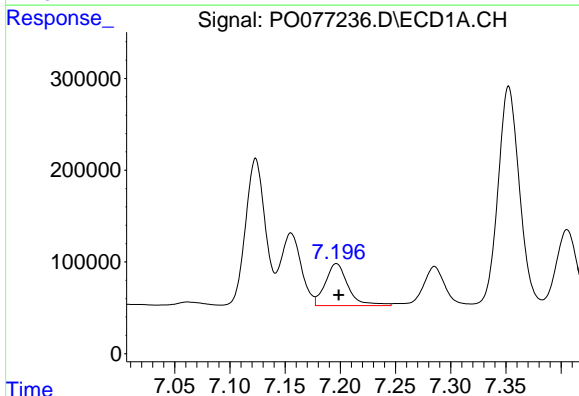
R.T.: 6.413 min
 Delta R.T.: -0.003 min
 Response: 76784
 Conc: 35.79 ng/ml

Instrument :
 ECD_O
 ClientSampleId :
 HED954A-END-1DL



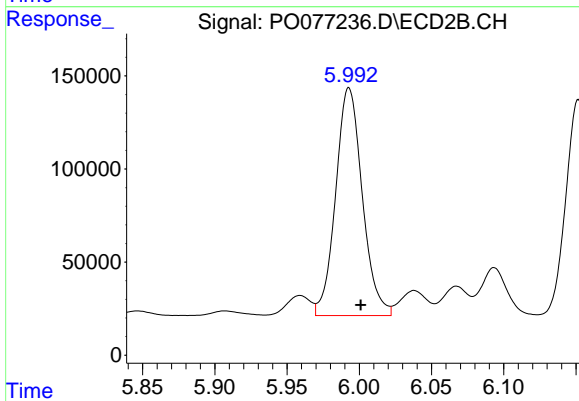
#19 AR-1242-4

R.T.: 5.433 min
 Delta R.T.: -0.007 min
 Response: 164753
 Conc: 145.02 ng/ml



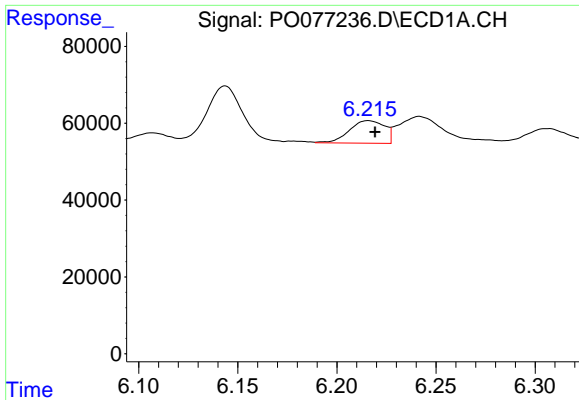
#20 AR-1242-5

R.T.: 7.197 min
 Delta R.T.: -0.002 min
 Response: 659027
 Conc: 285.02 ng/ml



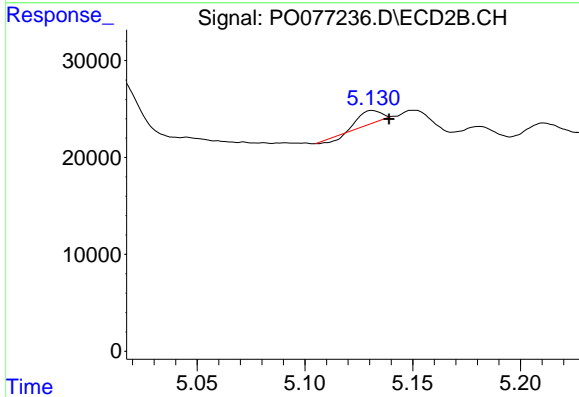
#20 AR-1242-5

R.T.: 5.993 min
 Delta R.T.: -0.008 min
 Response: 1571243
 Conc: 1119.82 ng/ml

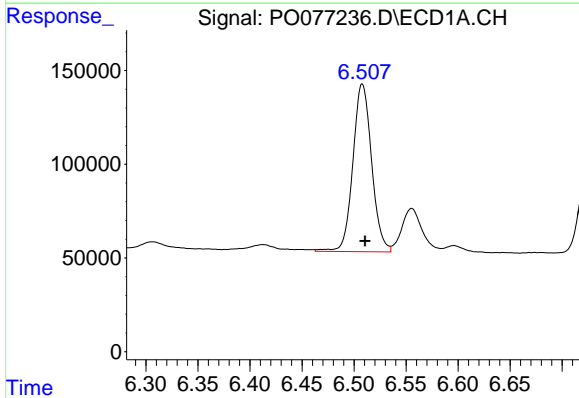


#21 AR-1248-1
 R.T.: 6.216 min
 Delta R.T.: -0.003 min
 Response: 72716
 Conc: 34.78 ng/ml

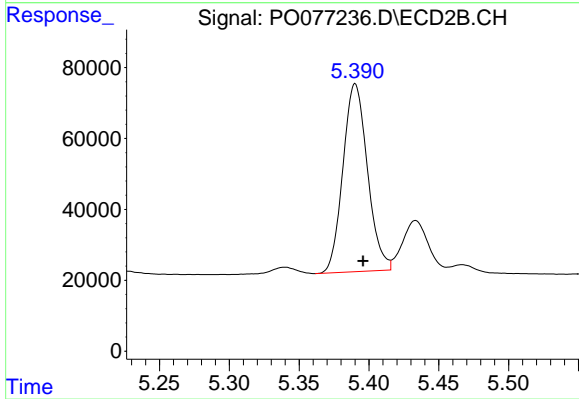
Instrument :
 ECD_O
 ClientSampleId :
 HED954A-END-1DL



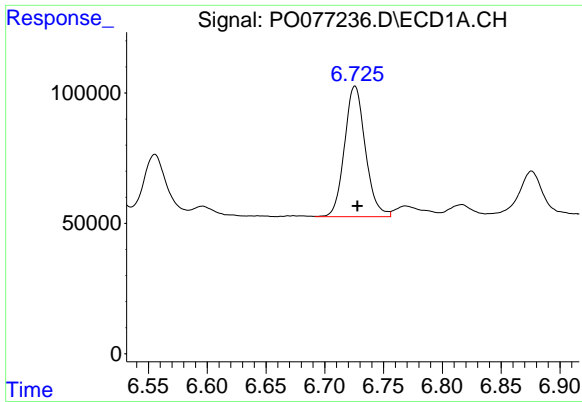
#21 AR-1248-1
 R.T.: 5.131 min
 Delta R.T.: -0.008 min
 Response: 7418
 Conc: 8.42 ng/ml



#22 AR-1248-2
 R.T.: 6.508 min
 Delta R.T.: -0.003 min
 Response: 1123840
 Conc: 370.43 ng/ml



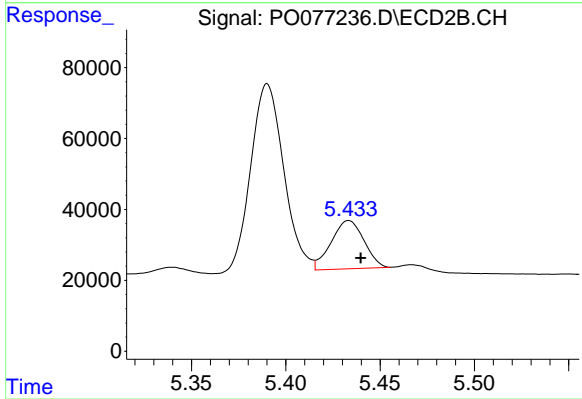
#22 AR-1248-2
 R.T.: 5.390 min
 Delta R.T.: -0.006 min
 Response: 647899
 Conc: 394.34 ng/ml



#23 AR-1248-3

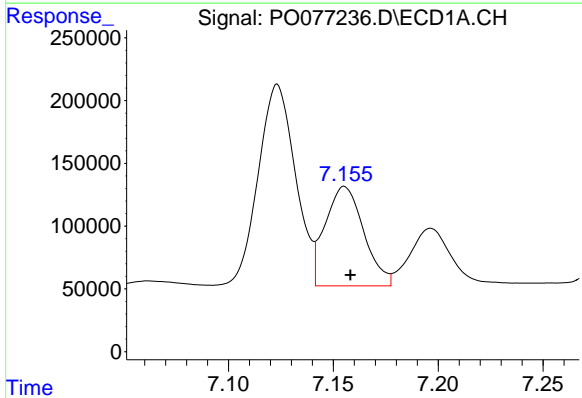
R.T.: 6.726 min
 Delta R.T.: -0.002 min
 Response: 618564
 Conc: 176.48 ng/ml

Instrument :
 ECD_O
 ClientSampleId :
 HED954A-END-1DL



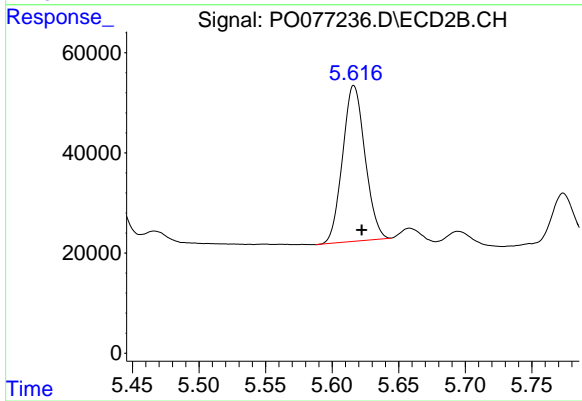
#23 AR-1248-3

R.T.: 5.433 min
 Delta R.T.: -0.006 min
 Response: 164753
 Conc: 102.54 ng/ml



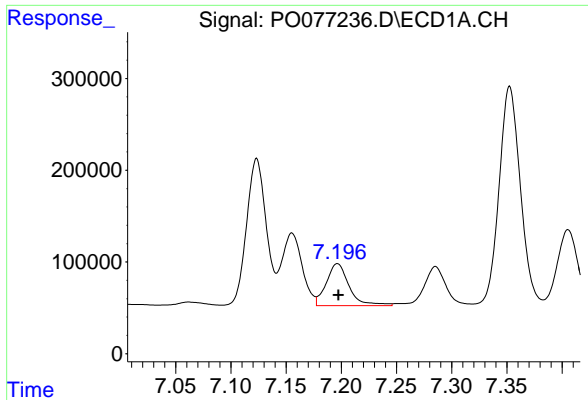
#24 AR-1248-4

R.T.: 7.155 min
 Delta R.T.: -0.003 min
 Response: 1014198
 Conc: 250.95 ng/ml



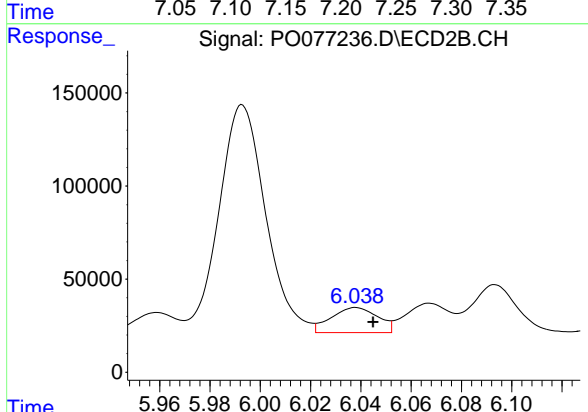
#24 AR-1248-4

R.T.: 5.616 min
 Delta R.T.: -0.006 min
 Response: 364478
 Conc: 194.23 ng/ml

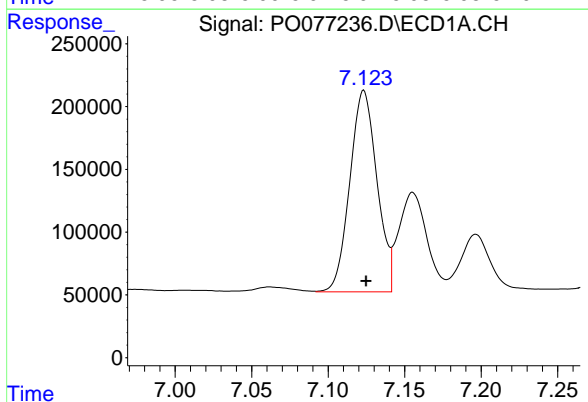


#25 AR-1248-5
 R.T.: 7.197 min
 Delta R.T.: 0.000 min
 Response: 659027
 Conc: 161.31 ng/ml

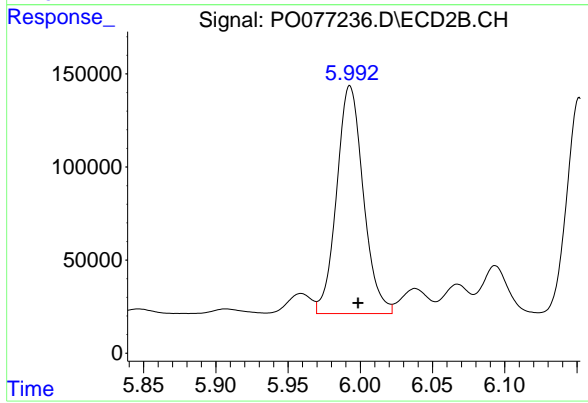
Instrument :
 ECD_O
ClientSampleId :
 HED954A-END-1DL



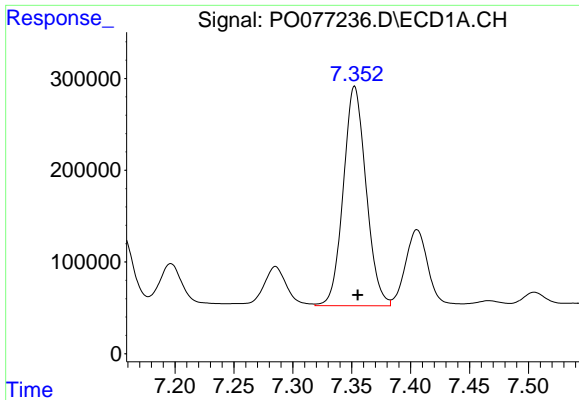
#25 AR-1248-5
 R.T.: 6.038 min
 Delta R.T.: -0.007 min
 Response: 173163
 Conc: 81.34 ng/ml



#26 AR-1254-1
 R.T.: 7.123 min
 Delta R.T.: -0.002 min
 Response: 1981287
 Conc: 481.81 ng/ml



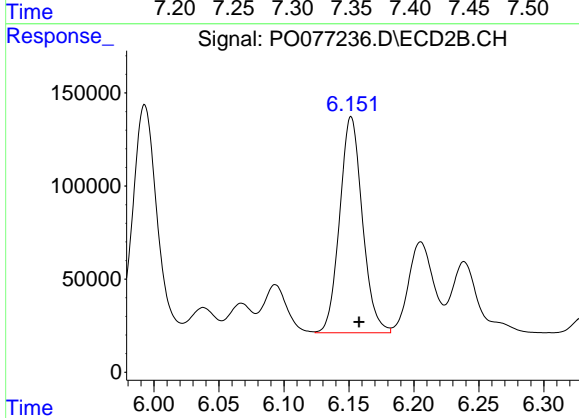
#26 AR-1254-1
 R.T.: 5.993 min
 Delta R.T.: -0.006 min
 Response: 1571243
 Conc: 544.33 ng/ml



#27 AR-1254-2

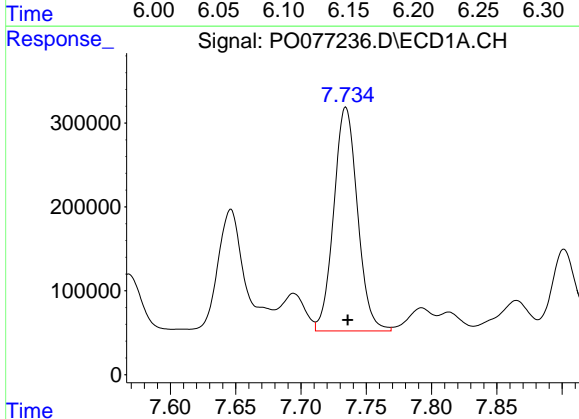
R.T.: 7.352 min
 Delta R.T.: -0.003 min
 Response: 3214352
 Conc: 496.64 ng/ml

Instrument :
 ECD_O
 ClientSampleId :
 HED954A-END-1DL



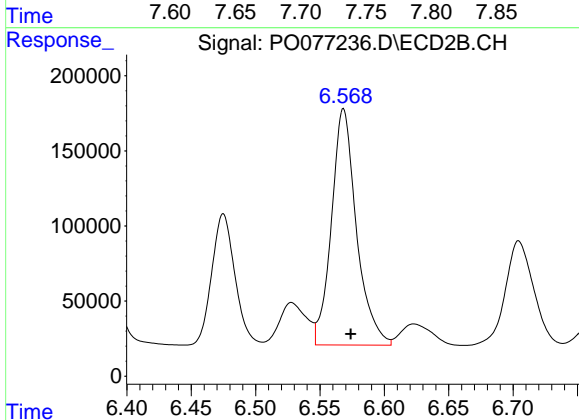
#27 AR-1254-2

R.T.: 6.152 min
 Delta R.T.: -0.006 min
 Response: 1410799
 Conc: 546.45 ng/ml



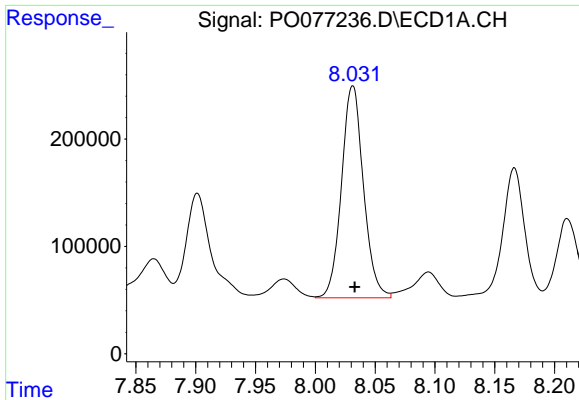
#28 AR-1254-3

R.T.: 7.734 min
 Delta R.T.: -0.001 min
 Response: 3375768
 Conc: 498.87 ng/ml



#28 AR-1254-3

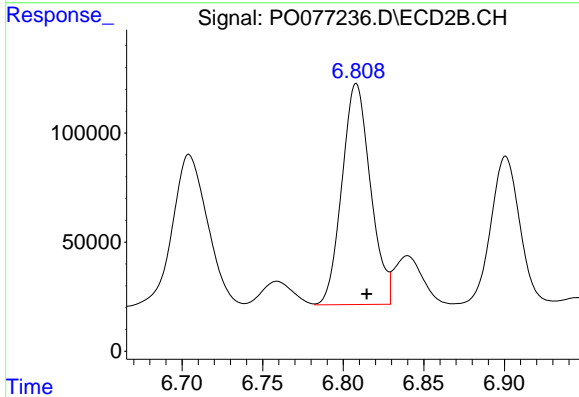
R.T.: 6.568 min
 Delta R.T.: -0.005 min
 Response: 2128028
 Conc: 543.91 ng/ml



#29 AR-1254-4

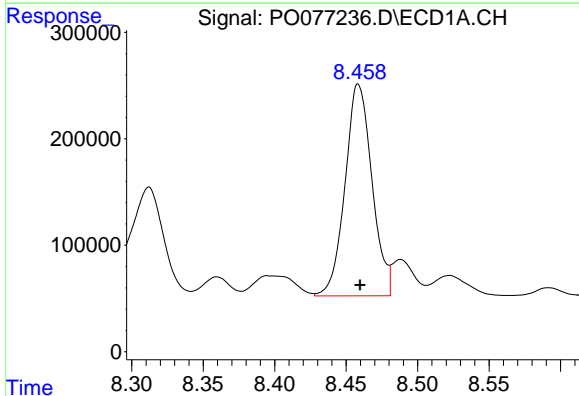
R.T.: 8.031 min
 Delta R.T.: -0.002 min
 Response: 2524225
 Conc: 513.28 ng/ml

Instrument :
 ECD_O
 ClientSampleId :
 HED954A-END-1DL



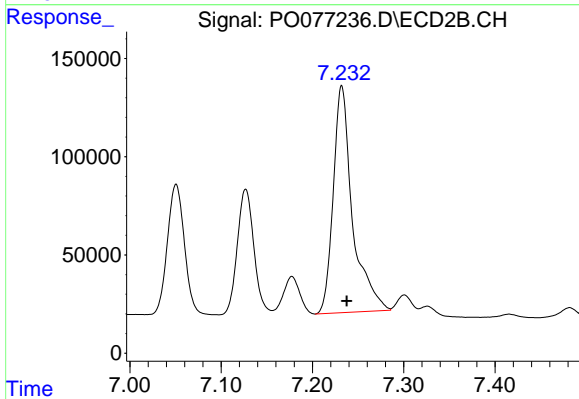
#29 AR-1254-4

R.T.: 6.808 min
 Delta R.T.: -0.006 min
 Response: 1247548
 Conc: 549.09 ng/ml



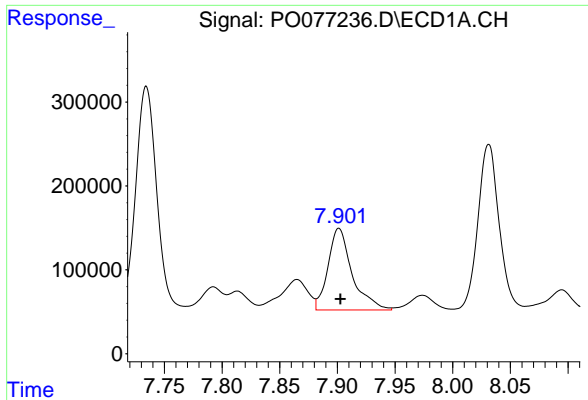
#30 AR-1254-5

R.T.: 8.458 min
 Delta R.T.: -0.001 min
 Response: 2611422
 Conc: 469.09 ng/ml



#30 AR-1254-5

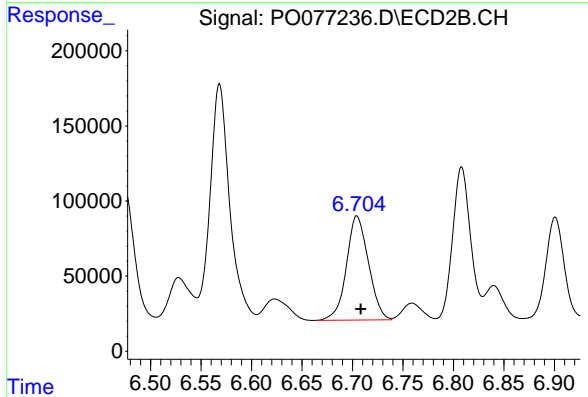
R.T.: 7.232 min
 Delta R.T.: -0.005 min
 Response: 1689990
 Conc: 466.10 ng/ml



#31 AR-1260-1

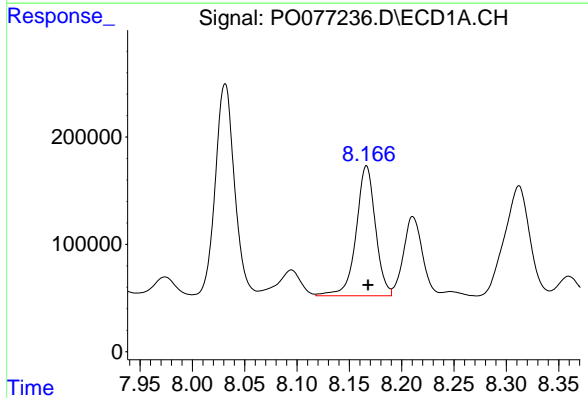
R.T.: 7.901 min
 Delta R.T.: -0.001 min
 Response: 1417019
 Conc: 261.89 ng/ml

Instrument :
 ECD_O
 ClientSampleId :
 HED954A-END-1DL



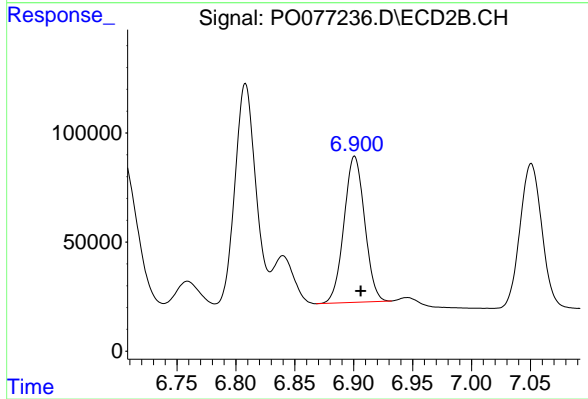
#31 AR-1260-1

R.T.: 6.704 min
 Delta R.T.: -0.004 min
 Response: 1052709
 Conc: 352.63 ng/ml



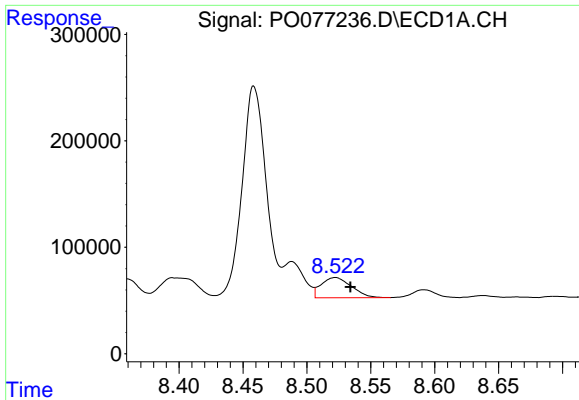
#32 AR-1260-2

R.T.: 8.166 min
 Delta R.T.: -0.001 min
 Response: 1559026
 Conc: 246.90 ng/ml



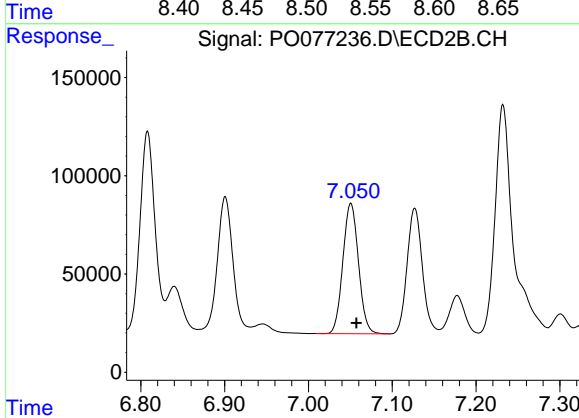
#32 AR-1260-2

R.T.: 6.901 min
 Delta R.T.: -0.005 min
 Response: 815940
 Conc: 228.87 ng/ml

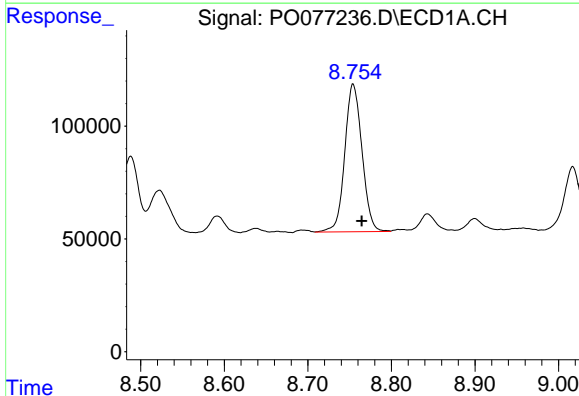


#33 AR-1260-3
 R.T.: 8.522 min
 Delta R.T.: -0.012 min
 Response: 314480
 Conc: 77.04 ng/ml

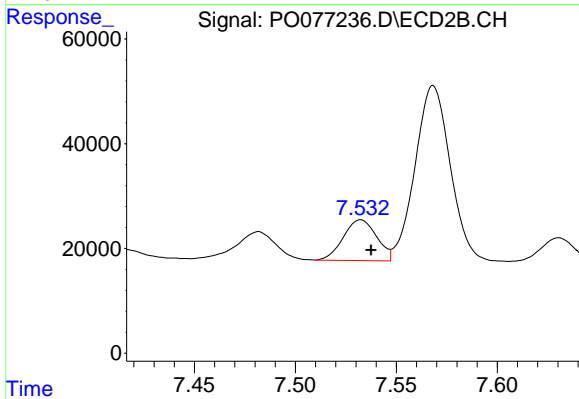
Instrument :
 ECD_O
 ClientSampleId :
 HED954A-END-1DL



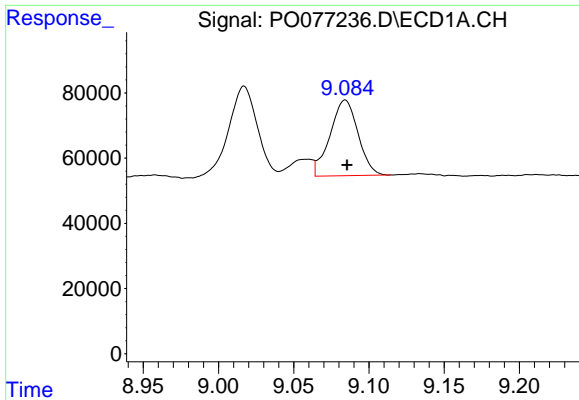
#33 AR-1260-3
 R.T.: 7.051 min
 Delta R.T.: -0.007 min
 Response: 858374
 Conc: 261.04 ng/ml



#34 AR-1260-4
 R.T.: 8.754 min
 Delta R.T.: -0.010 min
 Response: 937460
 Conc: 193.79 ng/ml



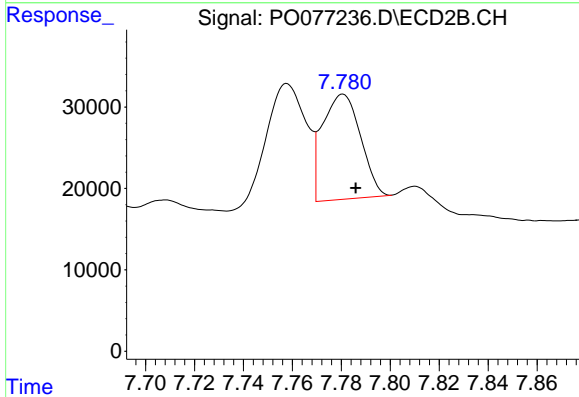
#34 AR-1260-4
 R.T.: 7.532 min
 Delta R.T.: -0.005 min
 Response: 89862
 Conc: 38.15 ng/ml



#35 AR-1260-5

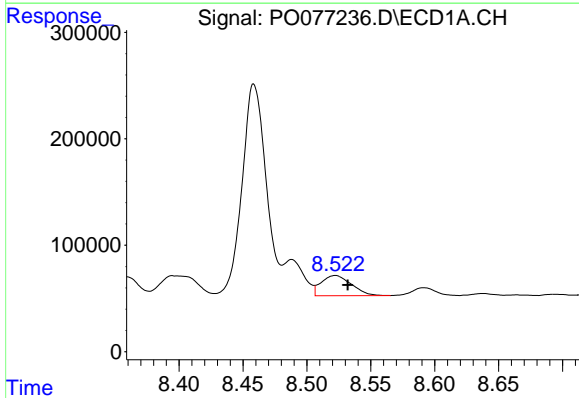
R.T.: 9.084 min
 Delta R.T.: -0.001 min
 Response: 301132
 Conc: 32.38 ng/ml

Instrument :
 ECD_O
 ClientSampleId :
 HED954A-END-1DL



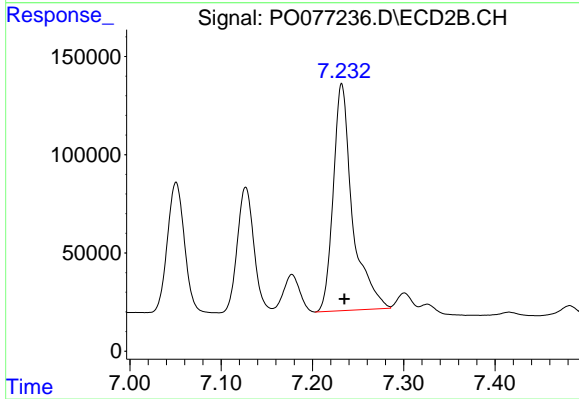
#35 AR-1260-5

R.T.: 7.781 min
 Delta R.T.: -0.005 min
 Response: 139759
 Conc: 26.04 ng/ml



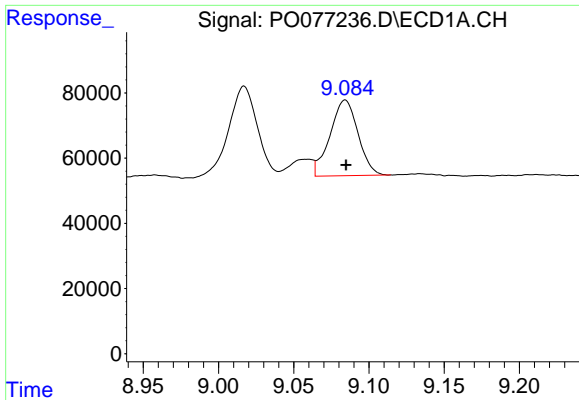
#36 AR-1262-1

R.T.: 8.522 min
 Delta R.T.: -0.010 min
 Response: 314480
 Conc: 46.84 ng/ml



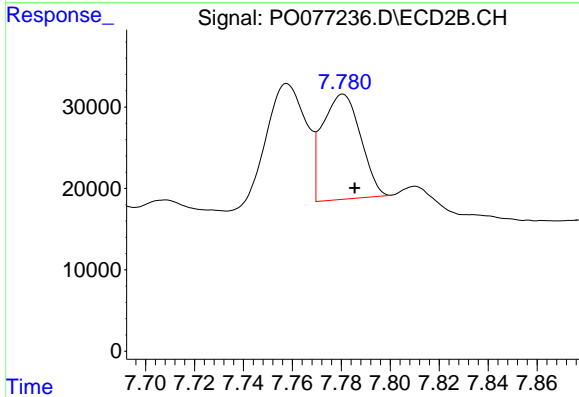
#36 AR-1262-1

R.T.: 7.232 min
 Delta R.T.: -0.003 min
 Response: 1689990
 Conc: 904.97 ng/ml

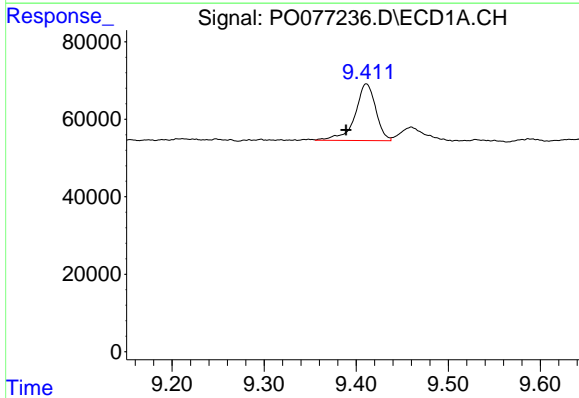


#37 AR-1262-2
 R.T.: 9.084 min
 Delta R.T.: 0.000 min
 Response: 301132
 Conc: 25.92 ng/ml

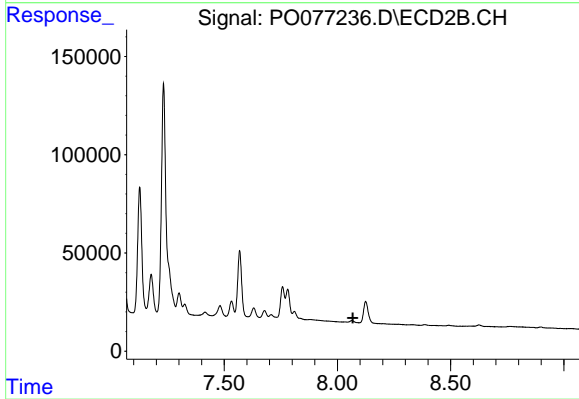
Instrument :
 ECD_O
ClientSampleId :
 HED954A-END-1DL



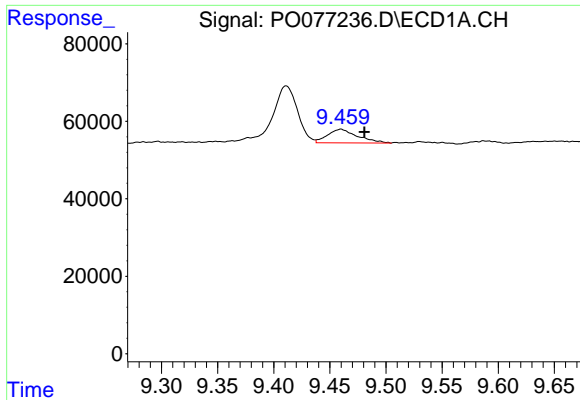
#37 AR-1262-2
 R.T.: 7.781 min
 Delta R.T.: -0.005 min
 Response: 139759
 Conc: 22.52 ng/ml



#38 AR-1262-3
 R.T.: 9.411 min
 Delta R.T.: 0.022 min
 Response: 228808
 Conc: 29.71 ng/ml

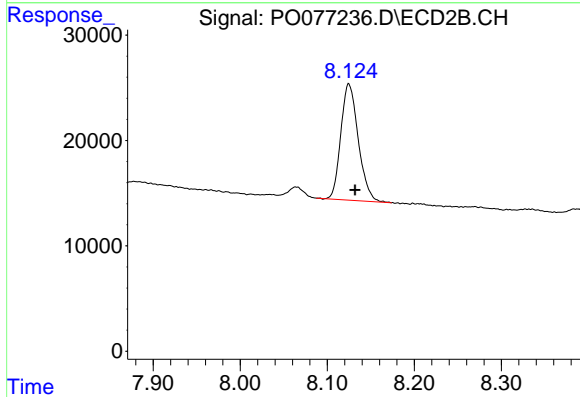


#38 AR-1262-3
 R.T.: 0.000 min
 Exp R.T. : 8.068 min
 Response: 0
 Conc: N.D.

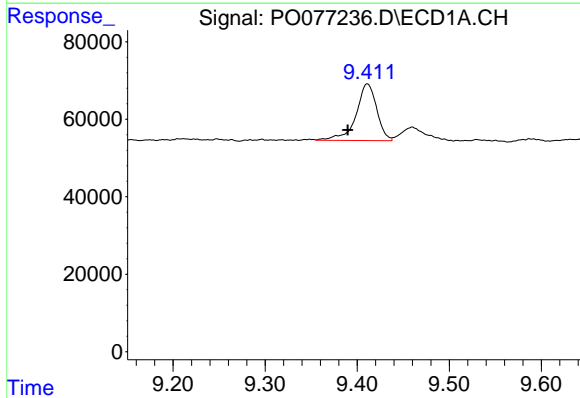


#39 AR-1262-4
 R.T.: 9.460 min
 Delta R.T.: -0.021 min
 Response: 64838
 Conc: 10.79 ng/ml

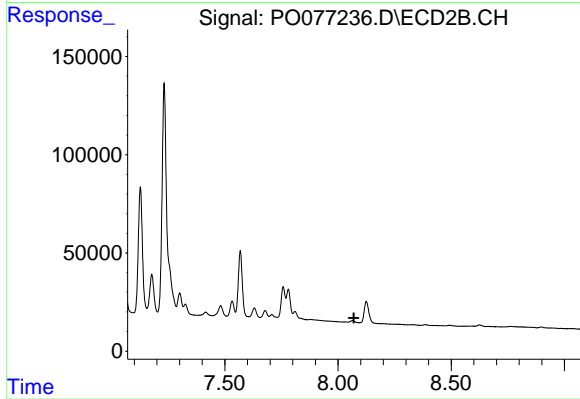
Instrument :
 ECD_O
 ClientSampleId :
 HED954A-END-1DL



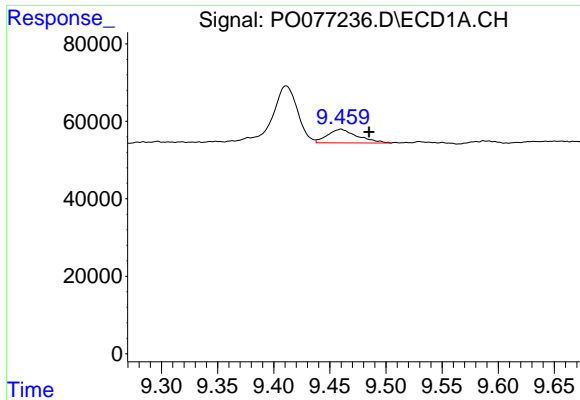
#39 AR-1262-4
 R.T.: 8.125 min
 Delta R.T.: -0.007 min
 Response: 154037
 Conc: 34.46 ng/ml



#41 AR-1268-1
 R.T.: 9.411 min
 Delta R.T.: 0.021 min
 Response: 228808
 Conc: 16.08 ng/ml



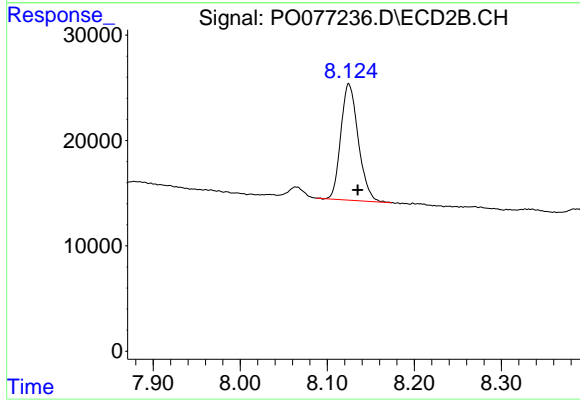
#41 AR-1268-1
 R.T.: 0.000 min
 Exp R.T. : 8.070 min
 Response: 0
 Conc: N.D.



#42 AR-1268-2

R.T.: 9.460 min
Delta R.T.: -0.025 min
Response: 64838
Conc: 4.92 ng/ml

Instrument :
ECD_O
ClientSampleId :
HED954A-END-1DL



#42 AR-1268-2

R.T.: 8.125 min
Delta R.T.: -0.010 min
Response: 154037
Conc: 23.98 ng/ml