

Data Path : Z:\pestpcbsrv\HPCHEM1\ECD_O\Data\P0042424\
 Data File : P0103129.D
 Signal(s) : Signal #1: ECD1A.ch Signal #2: ECD2B.ch
 Acq On : 24 Apr 2024 15:25
 Operator : YP/AJ
 Sample : AR1254CCC500
 Misc :
 ALS Vial : 6 Sample Multiplier: 1

Instrument :
 ECD_O
 ClientSampleId :
 AR1254CCC500

Integration File signal 1: autoint1.e
 Integration File signal 2: autoint2.e
 Quant Time: Apr 25 02:31:23 2024
 Quant Method : Z:\pestpcbsrv\HPCHEM1\ECD_O\methods\P0042224.M
 Quant Title : GC EXTRACTABLES
 QLast Update : Tue Apr 23 02:20:10 2024
 Response via : Initial Calibration
 Integrator: ChemStation

Volume Inj. : 2 µl
 Signal #1 Phase : ZB-MR1 Signal #2 Phase: ZB-MR2
 Signal #1 Info : 30Mx0.32mmx 0.50µ Signal #2 Info : 30M x 0.32mm x 0.25µm

Compound	RT#1	RT#2	Resp#1	Resp#2	ng/ml	ng/ml

System Monitoring Compounds						
1) SA Tetrachlo...	4.254	3.373	260.0E6	127.5E6	51.555	46.052
2) SA Decachlor...	9.775	8.227	163.9E6	90223600	56.438	52.550
Target Compounds						
3) L1 AR-1016-1	5.396	4.420	1761339	1447667	11.997	18.409 #
4) L1 AR-1016-2	5.423	4.438	2655631	1318796	12.298	11.238
5) L1 AR-1016-3	5.477	4.611	934508	1570448	6.871	25.355 #
6) L1 AR-1016-4	5.575	4.650	953884	25756228	8.836	486.221 #
7) L1 AR-1016-5	5.866	4.858	23574125	15975390	224.909	234.294
8) L2 AR-1221-1	4.462	3.582	261295	46926	4.499	1.501 #
9) L2 AR-1221-2	4.554	3.662	3776529	1862630	89.098	78.498
10) L2 AR-1221-3	4.622	3.736	553833	295468	4.346	4.166
11) L3 AR-1232-1	4.622	3.736	553833	295468	5.534	5.168
12) L3 AR-1232-2	5.134	4.438	885913	1318796	15.580	24.162 #
13) L3 AR-1232-3	5.423	4.611	2655631	1570448	26.962	55.047 #
14) L3 AR-1232-4	5.575	4.689	953884	8703244	19.884	321.393 #
15) L3 AR-1232-5	5.665	4.858	44674189	15975390	1110.700	549.039 #
16) L4 AR-1242-1	5.396	4.420	1761339	1447667	14.441	21.837 #
17) L4 AR-1242-2	5.423	4.438	2655631	1318796	14.828	13.519
18) L4 AR-1242-3	5.477	4.611	934508	1570448	8.265	29.298 #
19) L4 AR-1242-4	5.575	4.689	953884	8703244	10.685	157.811 #
20) L4 AR-1242-5	6.304	5.201	21294005	59714281	254.794	943.545 #
21) L5 AR-1248-1	5.396	4.420	1761339	1447667	19.703	29.152 #
22) L5 AR-1248-2	5.665	4.650	44674189	25756228	323.826	342.190
23) L5 AR-1248-3	5.866	4.689	23574125	8703244	166.178	112.043 #
24) L5 AR-1248-4	6.263	4.858	32689003	15975390	230.609	178.132
25) L5 AR-1248-5	6.304	5.241	21294005	6779158	154.886	84.559 #
26) L6 AR-1254-1	6.237	5.201	75302718	59714281	474.421	443.947
27) L6 AR-1254-2	6.452	5.346	109.3E6	53404617	466.519	451.891
28) L6 AR-1254-3	6.814	5.741	107.0E6	78697959	461.696	449.432
29) L6 AR-1254-4	7.096	5.967	72884137	48104993	491.246	474.227
30) L6 AR-1254-5	7.510	6.376	83752870	72199282	503.577	479.224
31) L7 AR-1260-1	6.975	5.868	45275464	40318348	255.549	317.090
32) L7 AR-1260-2	7.228	6.054	50473487	35236209	254.480	229.427
33) L7 AR-1260-3	7.569	6.202	10995157	33728319	77.726	242.038 #
34) L7 AR-1260-4	7.796	6.667	32083266	3392327	206.386	30.840 #
35) L7 AR-1260-5	8.111	6.907	12356477	8988439	41.418	35.035
36) L8 AR-1262-1	7.510	6.376	83752870	72199282	613.943	891.339 #
37) L8 AR-1262-2	8.111	6.667	12356477	3392327	36.873	23.656 #
38) L8 AR-1262-3	8.419	7.185	9102042	379650	41.169	3.128 #
39) L8 AR-1262-4	8.464	7.248	2618022	8234612	15.062	40.003 #
40) L8 AR-1262-5	9.094	7.741	649977	408588	5.536	4.644
41) L9 AR-1268-1	8.378	7.185	17314	379650	0.044	1.072 #

Data Path : Z:\pestpcbsrv\HPCHEM1\ECD_O\Data\P0042424\
 Data File : P0103129.D
 Signal(s) : Signal #1: ECD1A.ch Signal #2: ECD2B.ch
 Acq On : 24 Apr 2024 15:25
 Operator : YP/AJ
 Sample : AR1254CCC500
 Misc :
 ALS Vial : 6 Sample Multiplier: 1

Instrument :
 ECD_O
ClientSampleId :
 AR1254CCC500

Integration File signal 1: autoint1.e
 Integration File signal 2: autoint2.e
 Quant Time: Apr 25 02:31:23 2024
 Quant Method : Z:\pestpcbsrv\HPCHEM1\ECD_O\methods\P0042224.M
 Quant Title : GC EXTRACTABLES
 QLast Update : Tue Apr 23 02:20:10 2024
 Response via : Initial Calibration
 Integrator: ChemStation

Volume Inj. : 2 µl
 Signal #1 Phase : ZB-MR1 Signal #2 Phase: ZB-MR2
 Signal #1 Info : 30Mx0.32mmx 0.50µ Signal #2 Info : 30M x 0.32mm x 0.25µm

	Compound	RT#1	RT#2	Resp#1	Resp#2	ng/ml	ng/ml
42)	L9 AR-1268-2	8.464	7.248	2618022	8234612	7.021	25.901 #
43)	L9 AR-1268-3	8.703	7.453	728559	203377	2.200	0.749 #
44)	L9 AR-1268-4	9.094	8.008	649977	805564	4.983	1.112 #
45)	L9 AR-1268-5	9.473	8.227	1174312	90223600	1.118	291.046 #

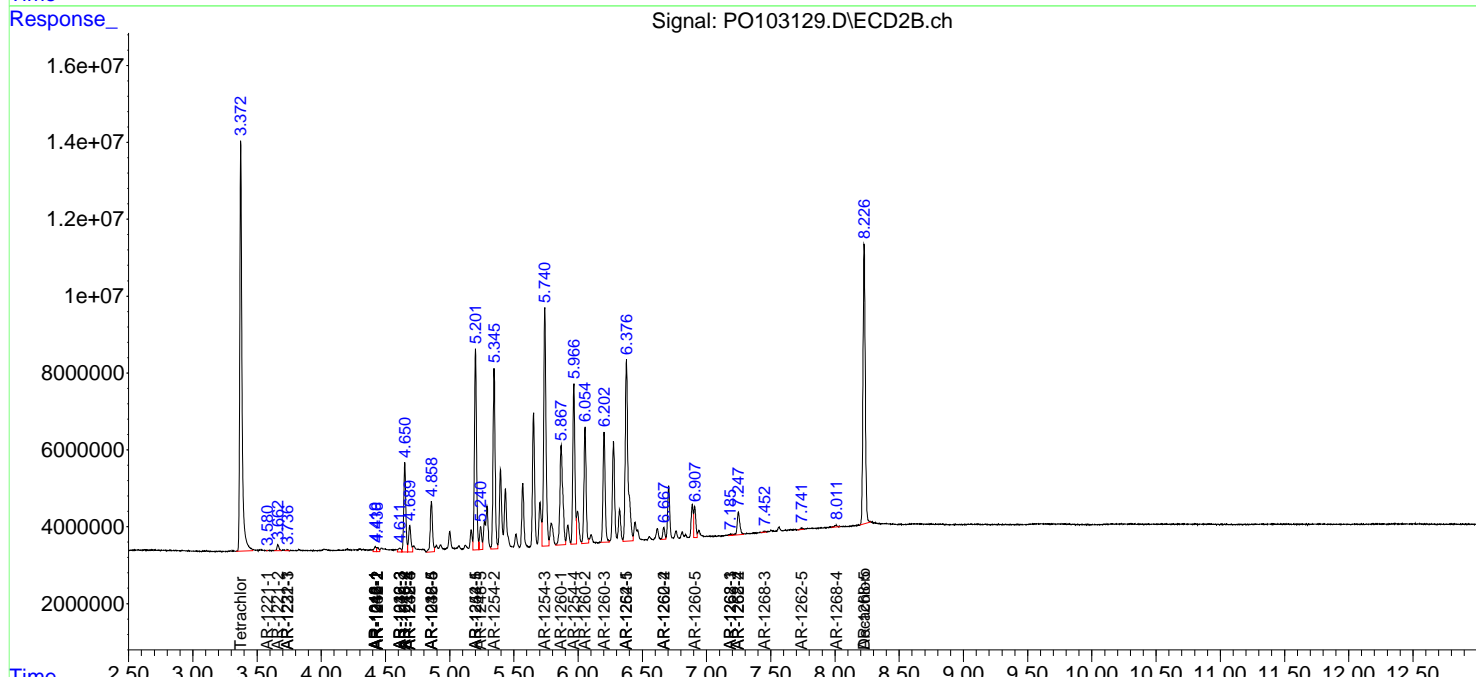
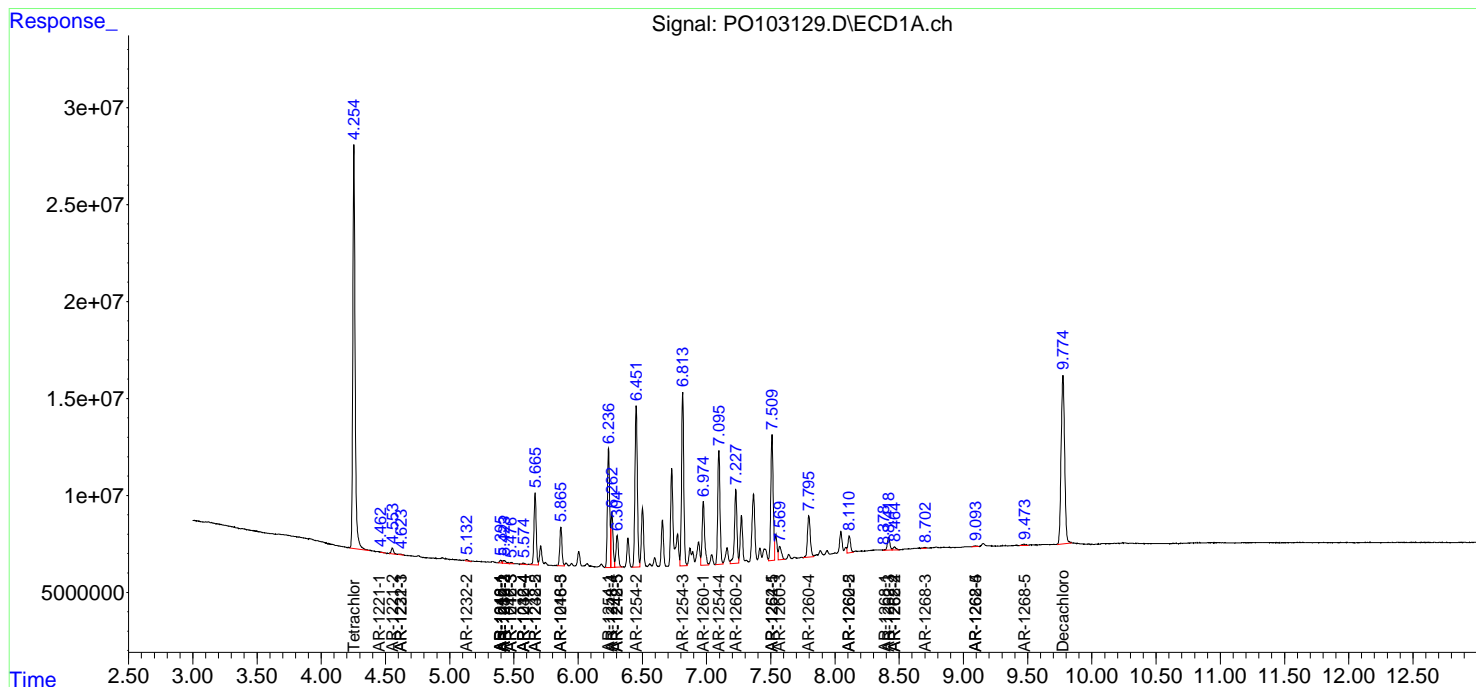
(f)=RT Delta > 1/2 Window (#)=Amounts differ by > 25% (m)=manual int.

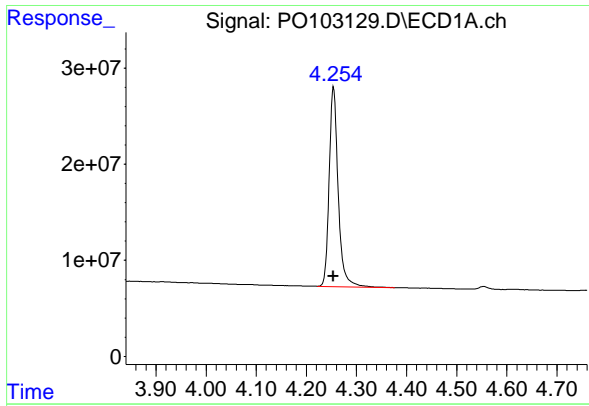
Data Path : Z:\pestpcbsrv\HPCHEM1\ECD_O\Data\PO042424\
 Data File : PO103129.D
 Signal(s) : Signal #1: ECD1A.ch Signal #2: ECD2B.ch
 Acq On : 24 Apr 2024 15:25
 Operator : YP/AJ
 Sample : AR1254CCC500
 Misc :
 ALS Vial : 6 Sample Multiplier: 1

Instrument :
 ECD_O
 ClientSampleId :
 AR1254CCC500

Integration File signal 1: autoint1.e
 Integration File signal 2: autoint2.e
 Quant Time: Apr 25 02:31:23 2024
 Quant Method : Z:\pestpcbsrv\HPCHEM1\ECD_O\methods\PO042224.M
 Quant Title : GC EXTRACTABLES
 QLast Update : Tue Apr 23 02:20:10 2024
 Response via : Initial Calibration
 Integrator: ChemStation

Volume Inj. : 2 µl
 Signal #1 Phase : ZB-MR1 Signal #2 Phase: ZB-MR2
 Signal #1 Info : 30Mx0.32mmx 0.50µm Signal #2 Info : 30M x 0.32mm x 0.25µm

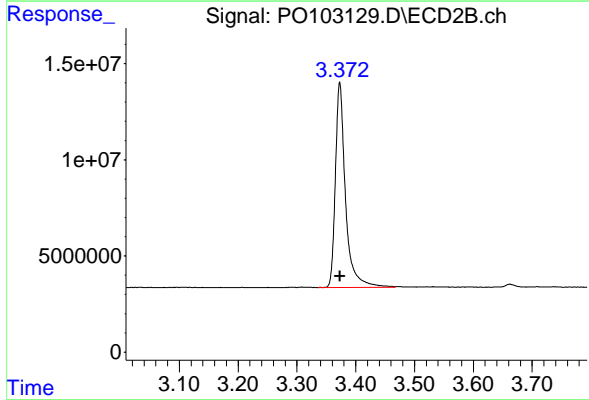




#1 Tetrachloro-m-xylene

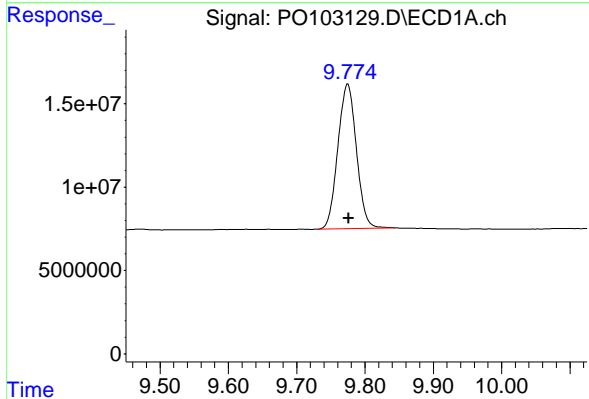
R.T.: 4.254 min
 Delta R.T.: 0.000 min
 Response: 260015679
 Conc: 51.55 ng/ml

Instrument :
 ECD_O
 ClientSampleId :
 AR1254CCC500



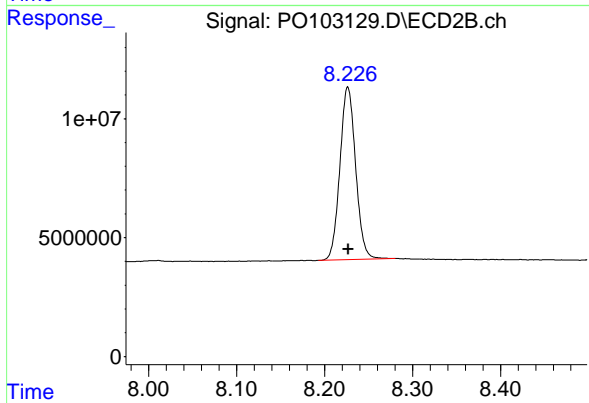
#1 Tetrachloro-m-xylene

R.T.: 3.373 min
 Delta R.T.: 0.000 min
 Response: 127452504
 Conc: 46.05 ng/ml



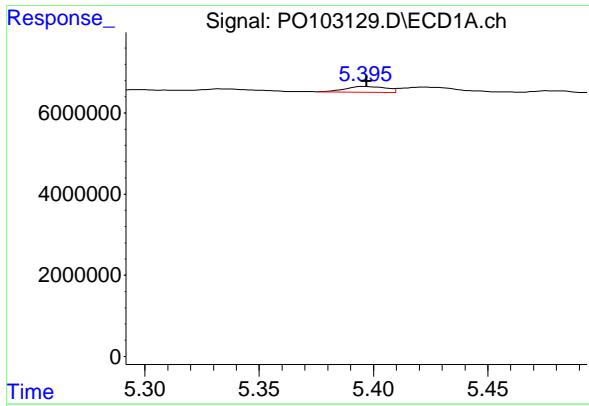
#2 Decachlorobiphenyl

R.T.: 9.775 min
 Delta R.T.: 0.000 min
 Response: 163884492
 Conc: 56.44 ng/ml



#2 Decachlorobiphenyl

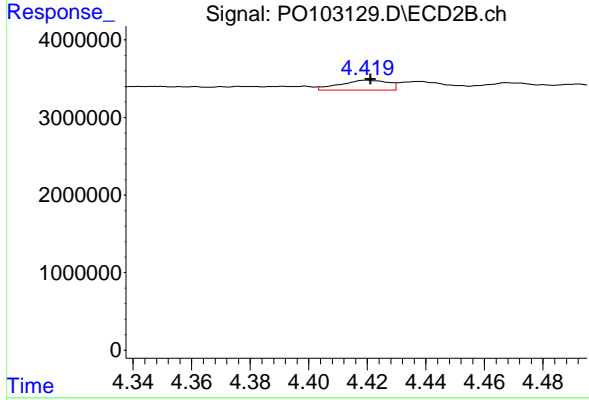
R.T.: 8.227 min
 Delta R.T.: 0.000 min
 Response: 90223600
 Conc: 52.55 ng/ml



#3 AR-1016-1

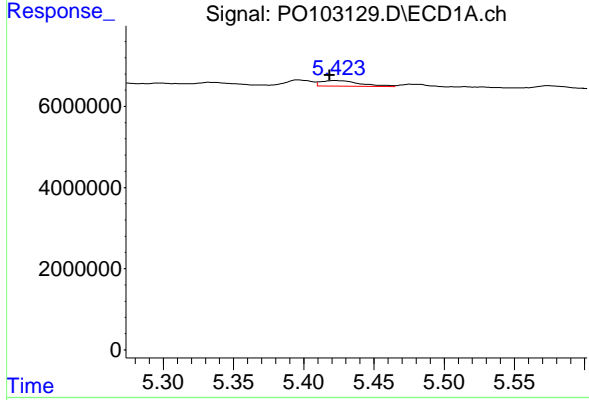
R.T.: 5.396 min
 Delta R.T.: -0.001 min
 Response: 1761339
 Conc: 12.00 ng/ml

Instrument :
 ECD_O
 ClientSampleId :
 AR1254CCC500



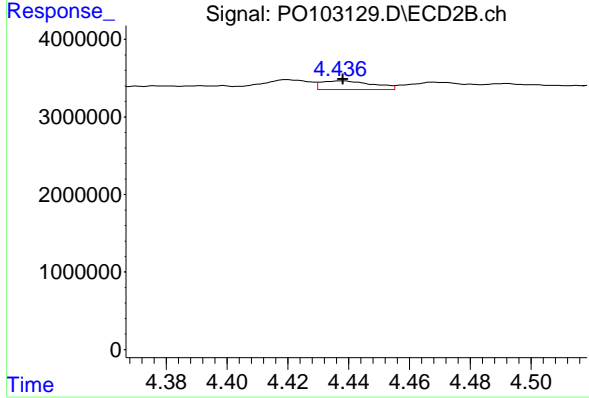
#3 AR-1016-1

R.T.: 4.420 min
 Delta R.T.: -0.001 min
 Response: 1447667
 Conc: 18.41 ng/ml



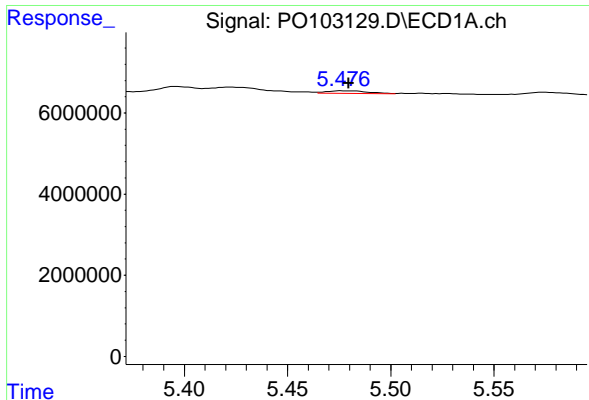
#4 AR-1016-2

R.T.: 5.423 min
 Delta R.T.: 0.004 min
 Response: 2655631
 Conc: 12.30 ng/ml



#4 AR-1016-2

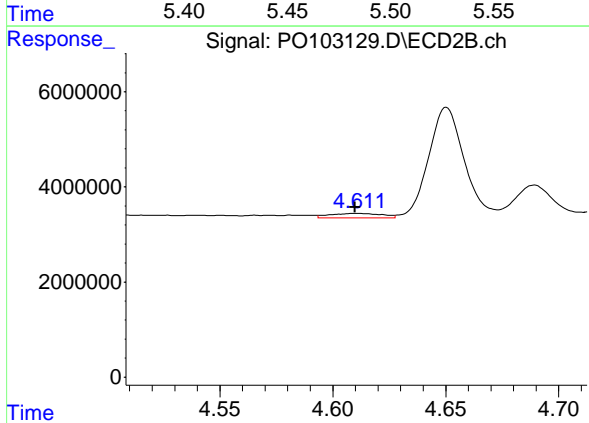
R.T.: 4.438 min
 Delta R.T.: 0.000 min
 Response: 1318796
 Conc: 11.24 ng/ml



#5 AR-1016-3

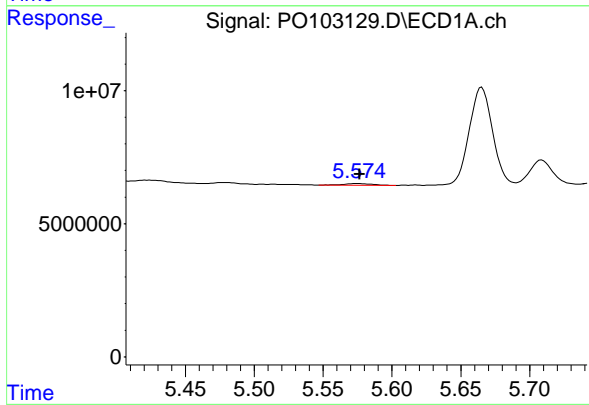
R.T.: 5.477 min
 Delta R.T.: -0.003 min
 Response: 934508
 Conc: 6.87 ng/ml

Instrument :
 ECD_O
 ClientSampleId :
 AR1254CCC500



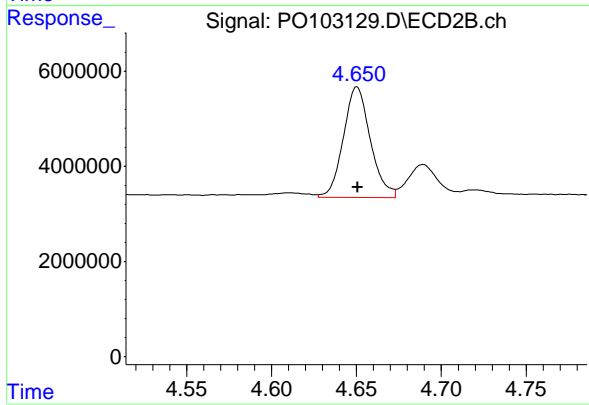
#5 AR-1016-3

R.T.: 4.611 min
 Delta R.T.: 0.001 min
 Response: 1570448
 Conc: 25.35 ng/ml



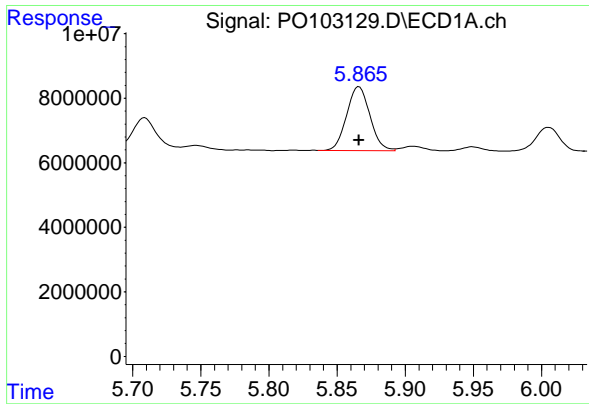
#6 AR-1016-4

R.T.: 5.575 min
 Delta R.T.: -0.002 min
 Response: 953884
 Conc: 8.84 ng/ml



#6 AR-1016-4

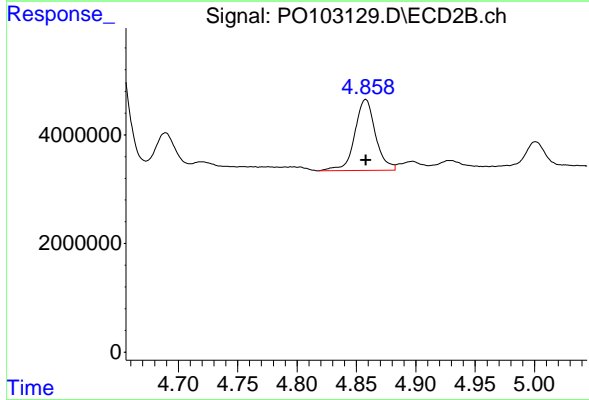
R.T.: 4.650 min
 Delta R.T.: 0.000 min
 Response: 25756228
 Conc: 486.22 ng/ml



#7 AR-1016-5

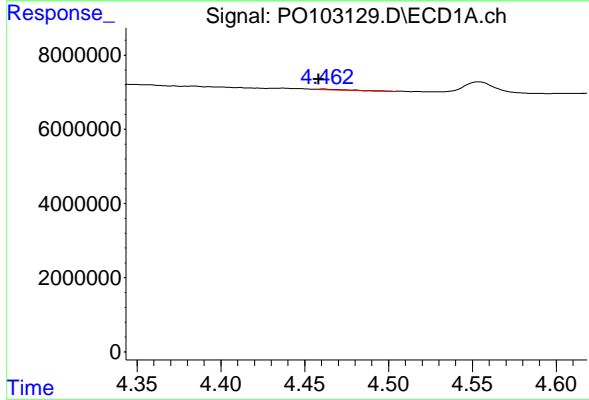
R.T.: 5.866 min
 Delta R.T.: 0.000 min
 Response: 23574125
 Conc: 224.91 ng/ml

Instrument :
 ECD_O
 ClientSampleId :
 AR1254CCC500



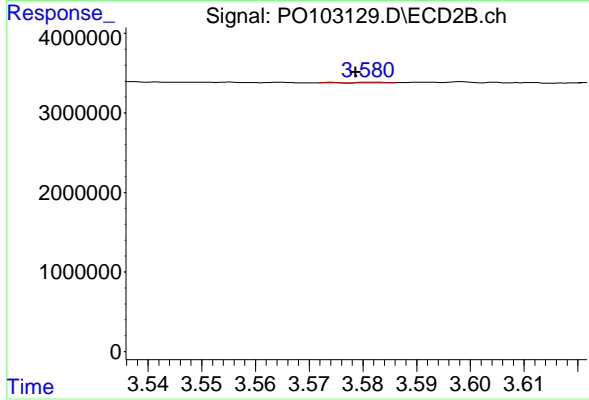
#7 AR-1016-5

R.T.: 4.858 min
 Delta R.T.: 0.000 min
 Response: 15975390
 Conc: 234.29 ng/ml



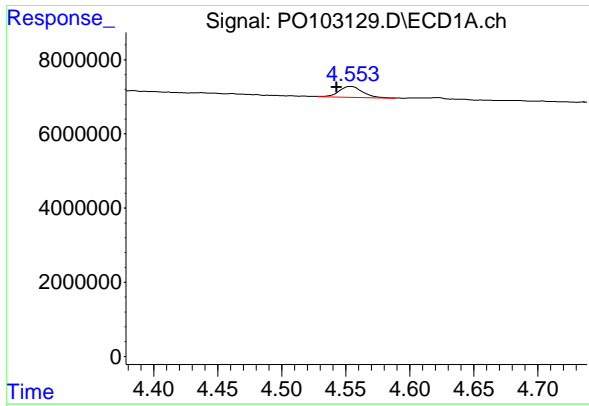
#8 AR-1221-1

R.T.: 4.462 min
 Delta R.T.: 0.003 min
 Response: 261295
 Conc: 4.50 ng/ml



#8 AR-1221-1

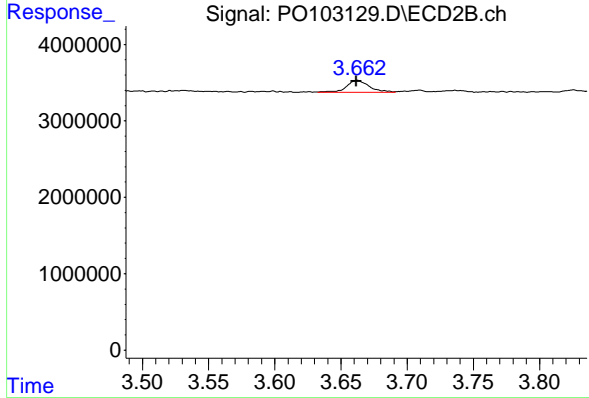
R.T.: 3.582 min
 Delta R.T.: 0.003 min
 Response: 46926
 Conc: 1.50 ng/ml



#9 AR-1221-2

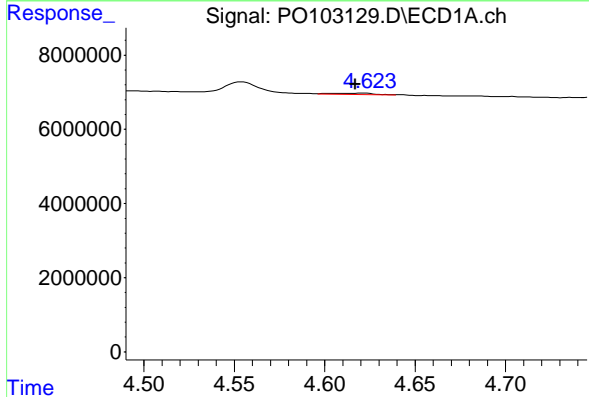
R.T.: 4.554 min
 Delta R.T.: 0.011 min
 Response: 3776529
 Conc: 89.10 ng/ml

Instrument : ECD_O
 ClientSampleId : AR1254CCC500



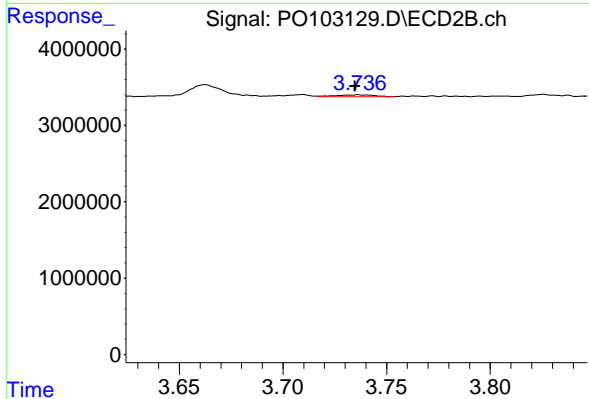
#9 AR-1221-2

R.T.: 3.662 min
 Delta R.T.: 0.000 min
 Response: 1862630
 Conc: 78.50 ng/ml



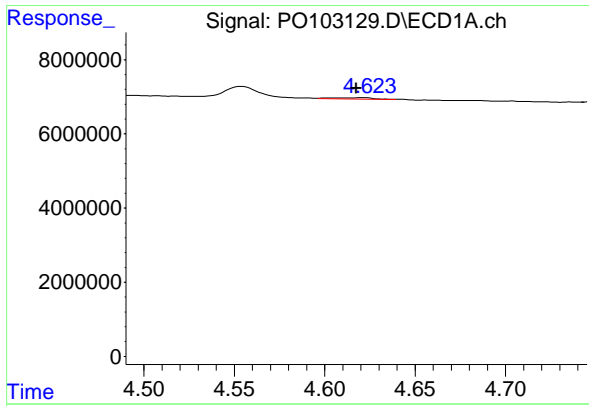
#10 AR-1221-3

R.T.: 4.622 min
 Delta R.T.: 0.005 min
 Response: 553833
 Conc: 4.35 ng/ml



#10 AR-1221-3

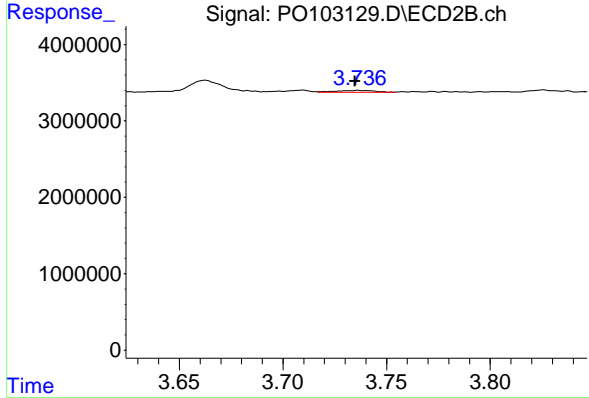
R.T.: 3.736 min
 Delta R.T.: 0.000 min
 Response: 295468
 Conc: 4.17 ng/ml



#11 AR-1232-1

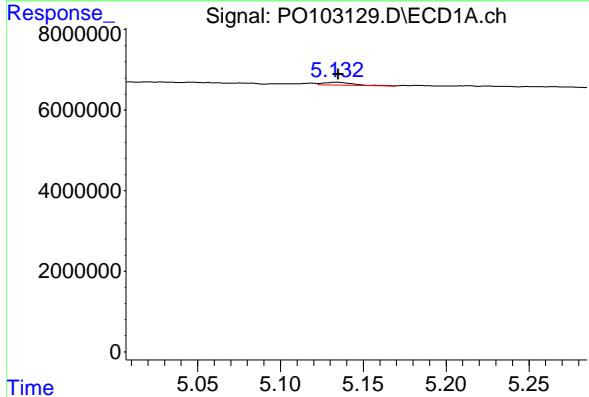
R.T.: 4.622 min
 Delta R.T.: 0.005 min
 Response: 553833
 Conc: 5.53 ng/ml

Instrument :
 ECD_O
 ClientSampleId :
 AR1254CCC500



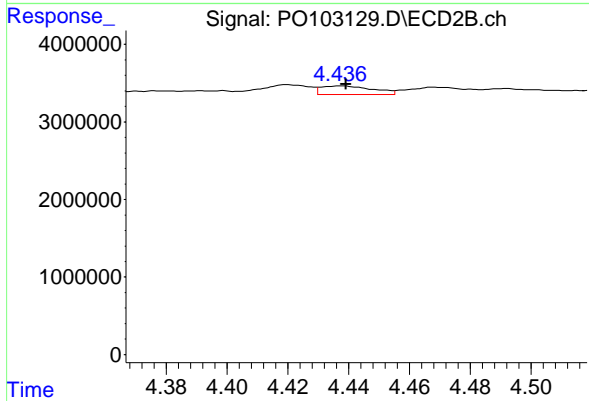
#11 AR-1232-1

R.T.: 3.736 min
 Delta R.T.: 0.001 min
 Response: 295468
 Conc: 5.17 ng/ml



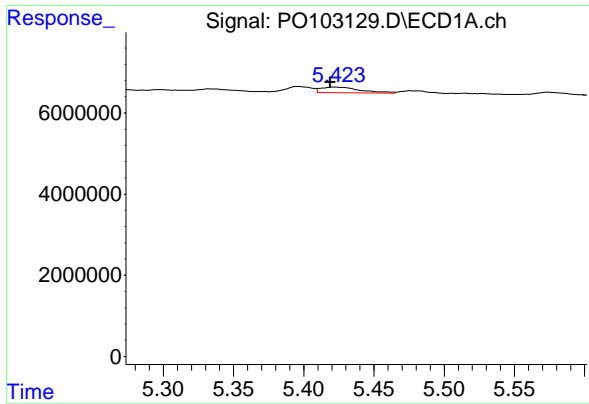
#12 AR-1232-2

R.T.: 5.134 min
 Delta R.T.: 0.000 min
 Response: 885913
 Conc: 15.58 ng/ml



#12 AR-1232-2

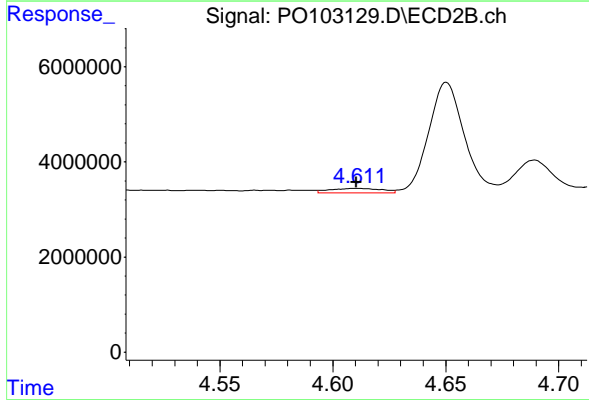
R.T.: 4.438 min
 Delta R.T.: -0.001 min
 Response: 1318796
 Conc: 24.16 ng/ml



#13 AR-1232-3

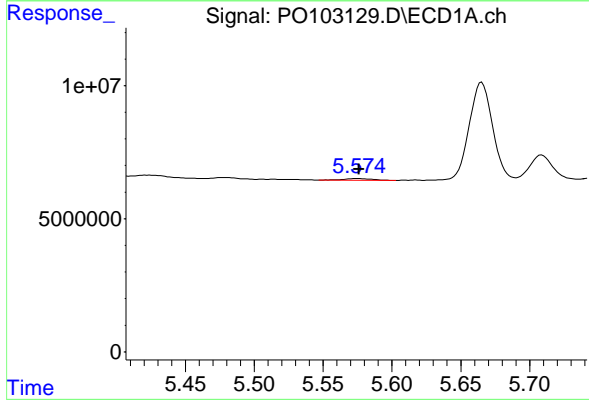
R.T.: 5.423 min
 Delta R.T.: 0.004 min
 Response: 2655631
 Conc: 26.96 ng/ml

Instrument : ECD_O
 ClientSampleId : AR1254CCC500



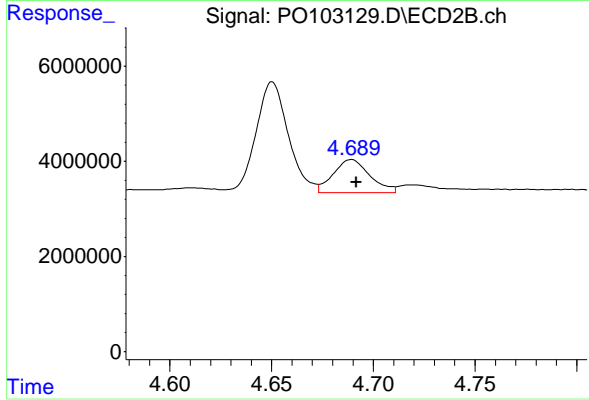
#13 AR-1232-3

R.T.: 4.611 min
 Delta R.T.: 0.000 min
 Response: 1570448
 Conc: 55.05 ng/ml



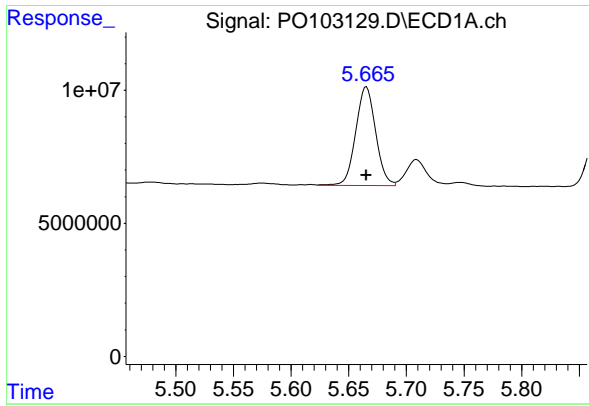
#14 AR-1232-4

R.T.: 5.575 min
 Delta R.T.: -0.002 min
 Response: 953884
 Conc: 19.88 ng/ml



#14 AR-1232-4

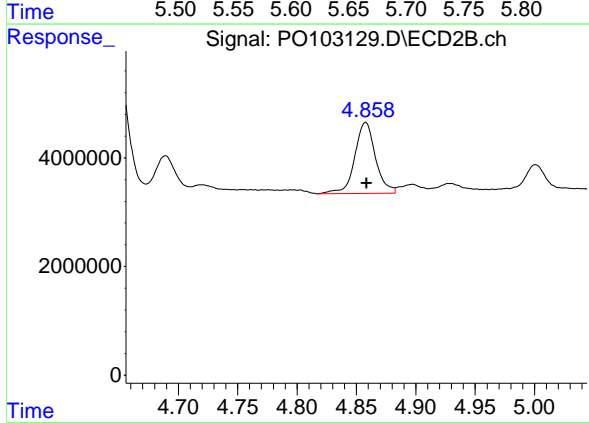
R.T.: 4.689 min
 Delta R.T.: -0.002 min
 Response: 8703244
 Conc: 321.39 ng/ml



#15 AR-1232-5

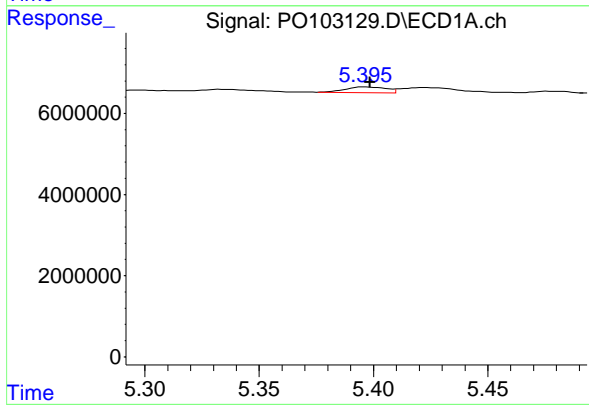
R.T.: 5.665 min
 Delta R.T.: 0.000 min
 Response: 44674189
 Conc: 1110.70 ng/ml

Instrument :
 ECD_O
 ClientSampleId :
 AR1254CCC500



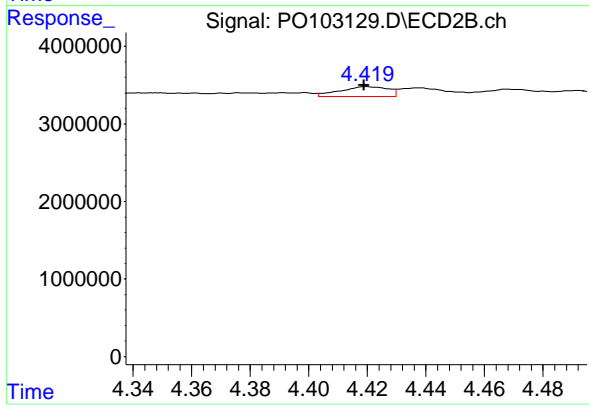
#15 AR-1232-5

R.T.: 4.858 min
 Delta R.T.: 0.000 min
 Response: 15975390
 Conc: 549.04 ng/ml



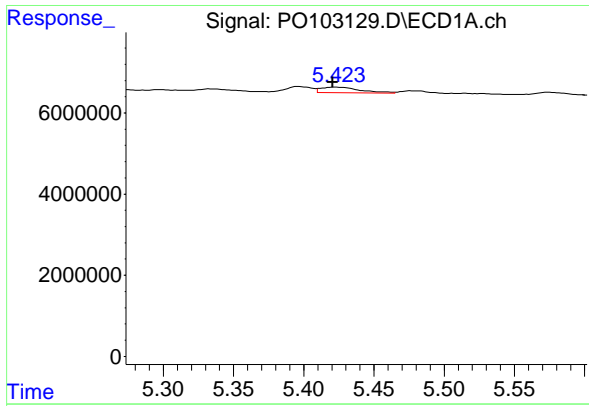
#16 AR-1242-1

R.T.: 5.396 min
 Delta R.T.: -0.003 min
 Response: 1761339
 Conc: 14.44 ng/ml



#16 AR-1242-1

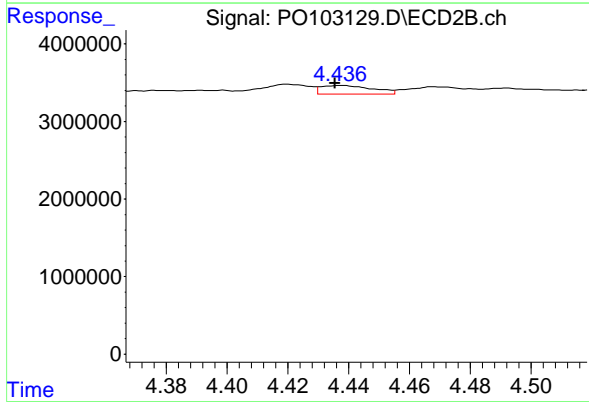
R.T.: 4.420 min
 Delta R.T.: 0.000 min
 Response: 1447667
 Conc: 21.84 ng/ml



#17 AR-1242-2

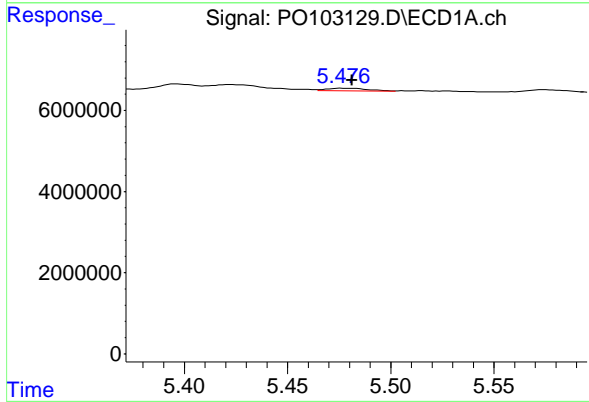
R.T.: 5.423 min
 Delta R.T.: 0.002 min
 Response: 2655631
 Conc: 14.83 ng/ml

Instrument : ECD_O
 ClientSampleId : AR1254CCC500



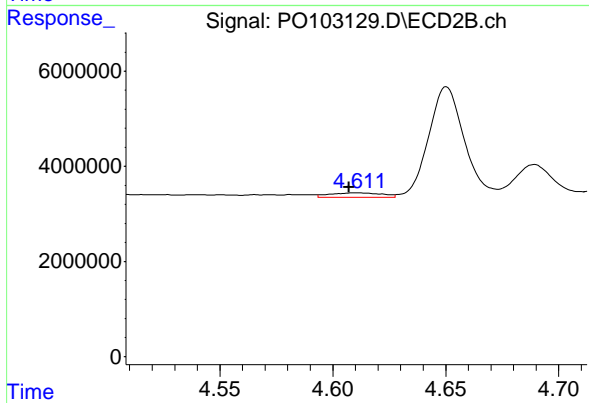
#17 AR-1242-2

R.T.: 4.438 min
 Delta R.T.: 0.002 min
 Response: 1318796
 Conc: 13.52 ng/ml



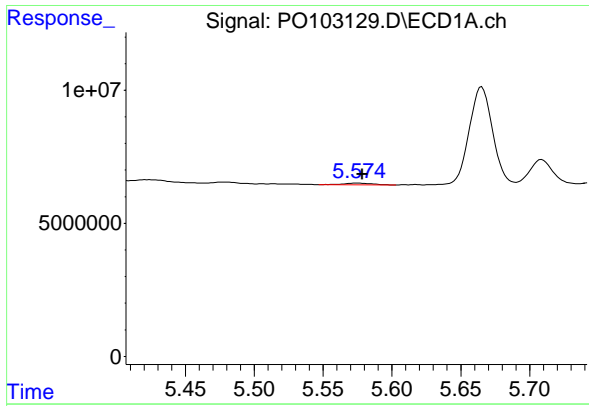
#18 AR-1242-3

R.T.: 5.477 min
 Delta R.T.: -0.005 min
 Response: 934508
 Conc: 8.27 ng/ml



#18 AR-1242-3

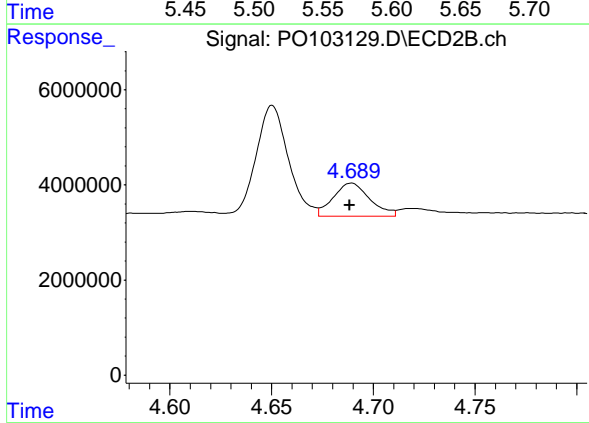
R.T.: 4.611 min
 Delta R.T.: 0.004 min
 Response: 1570448
 Conc: 29.30 ng/ml



#19 AR-1242-4

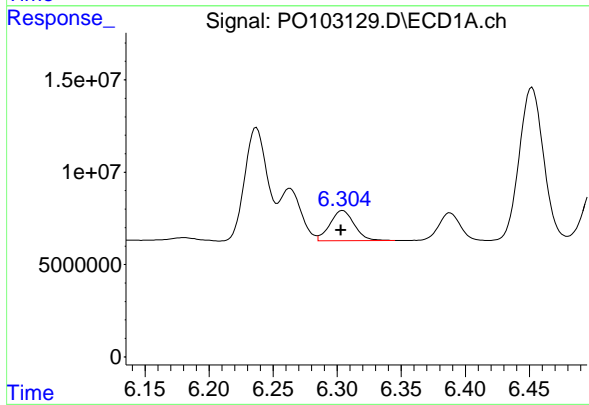
R.T.: 5.575 min
 Delta R.T.: -0.004 min
 Response: 953884
 Conc: 10.68 ng/ml

Instrument :
 ECD_O
 ClientSampleId :
 AR1254CCC500



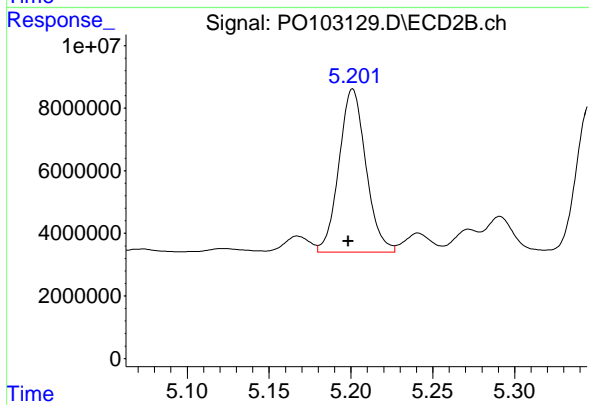
#19 AR-1242-4

R.T.: 4.689 min
 Delta R.T.: 0.000 min
 Response: 8703244
 Conc: 157.81 ng/ml



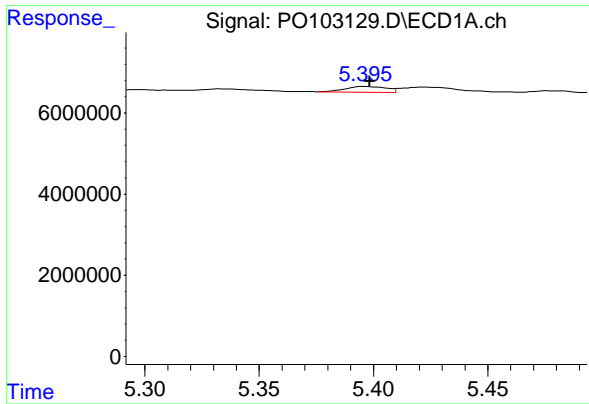
#20 AR-1242-5

R.T.: 6.304 min
 Delta R.T.: 0.001 min
 Response: 21294005
 Conc: 254.79 ng/ml



#20 AR-1242-5

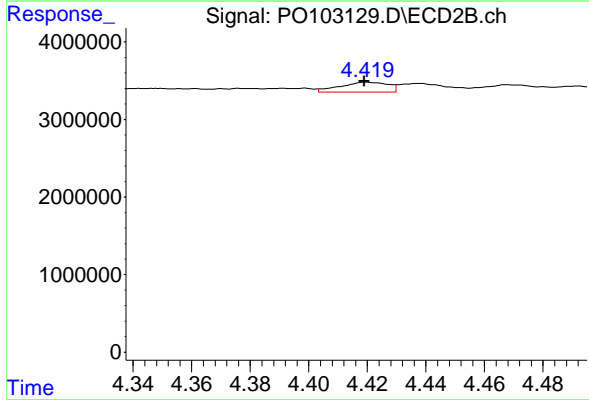
R.T.: 5.201 min
 Delta R.T.: 0.003 min
 Response: 59714281
 Conc: 943.55 ng/ml



#21 AR-1248-1

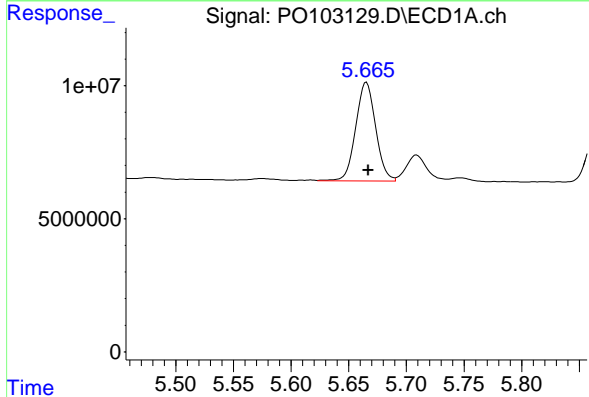
R.T.: 5.396 min
 Delta R.T.: -0.002 min
 Response: 1761339
 Conc: 19.70 ng/ml

Instrument :
 ECD_O
 ClientSampleId :
 AR1254CCC500



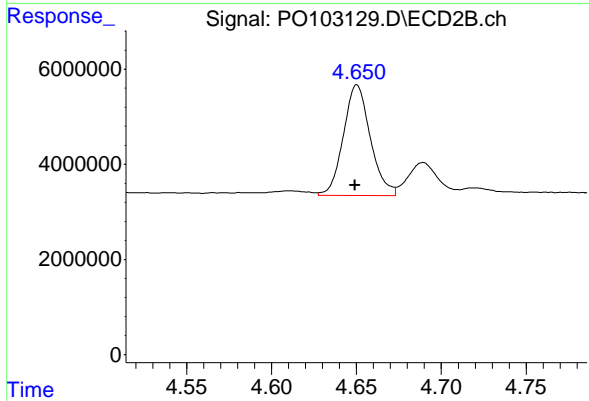
#21 AR-1248-1

R.T.: 4.420 min
 Delta R.T.: 0.000 min
 Response: 1447667
 Conc: 29.15 ng/ml



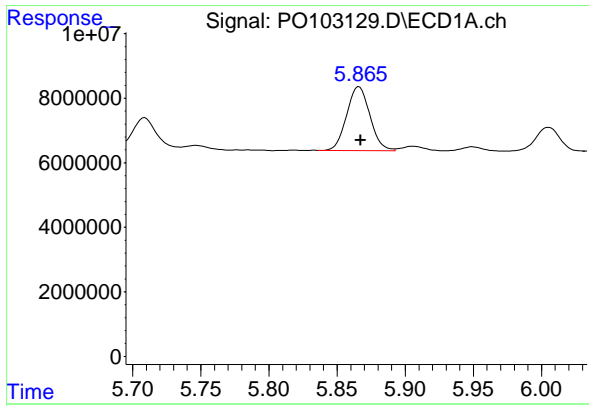
#22 AR-1248-2

R.T.: 5.665 min
 Delta R.T.: -0.002 min
 Response: 44674189
 Conc: 323.83 ng/ml



#22 AR-1248-2

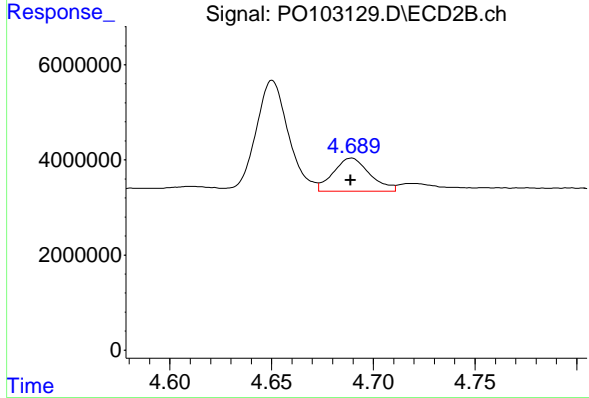
R.T.: 4.650 min
 Delta R.T.: 0.001 min
 Response: 25756228
 Conc: 342.19 ng/ml



#23 AR-1248-3

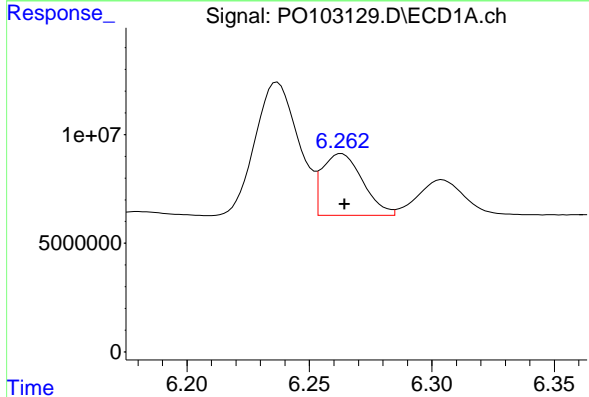
R.T.: 5.866 min
 Delta R.T.: -0.001 min
 Response: 23574125
 Conc: 166.18 ng/ml

Instrument :
 ECD_O
 ClientSampleId :
 AR1254CCC500



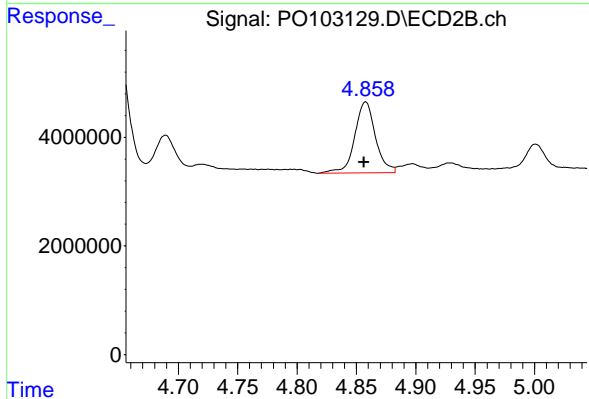
#23 AR-1248-3

R.T.: 4.689 min
 Delta R.T.: 0.000 min
 Response: 8703244
 Conc: 112.04 ng/ml



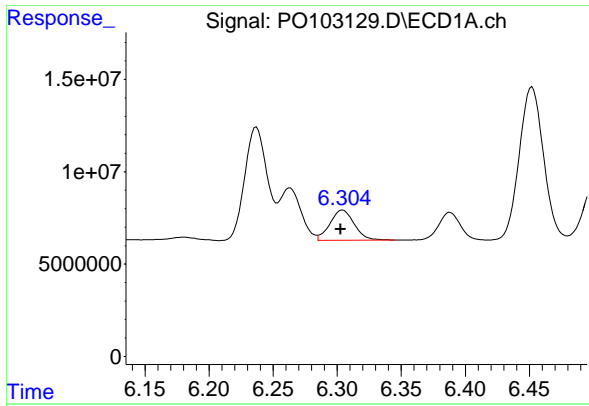
#24 AR-1248-4

R.T.: 6.263 min
 Delta R.T.: -0.001 min
 Response: 32689003
 Conc: 230.61 ng/ml



#24 AR-1248-4

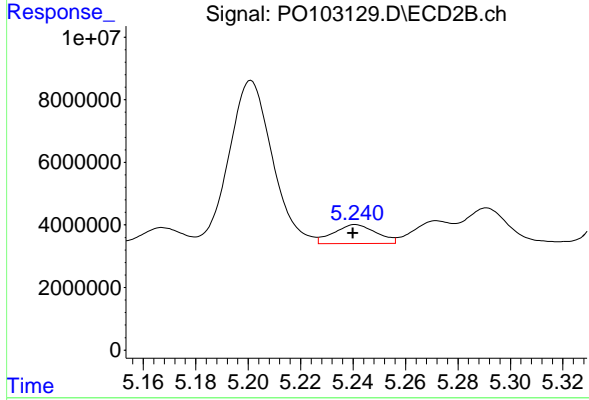
R.T.: 4.858 min
 Delta R.T.: 0.001 min
 Response: 15975390
 Conc: 178.13 ng/ml



#25 AR-1248-5

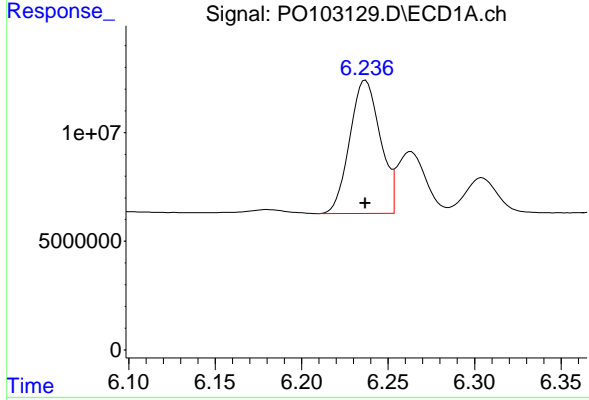
R.T.: 6.304 min
 Delta R.T.: 0.002 min
 Response: 21294005
 Conc: 154.89 ng/ml

Instrument :
 ECD_O
 ClientSampleId :
 AR1254CCC500



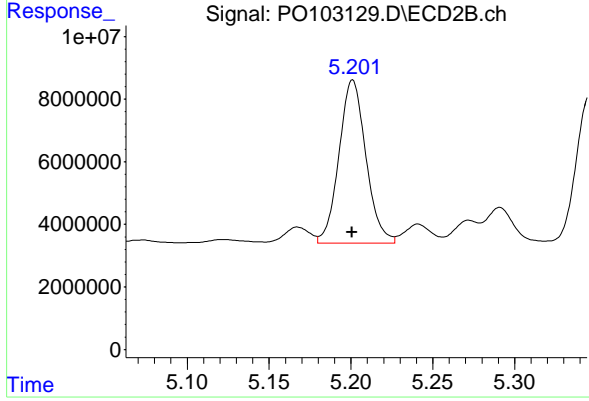
#25 AR-1248-5

R.T.: 5.241 min
 Delta R.T.: 0.001 min
 Response: 6779158
 Conc: 84.56 ng/ml



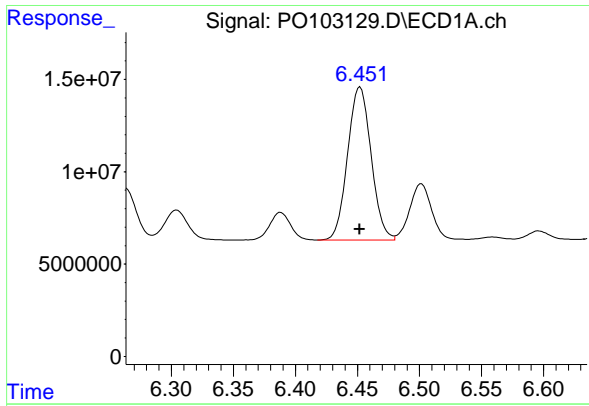
#26 AR-1254-1

R.T.: 6.237 min
 Delta R.T.: 0.000 min
 Response: 75302718
 Conc: 474.42 ng/ml



#26 AR-1254-1

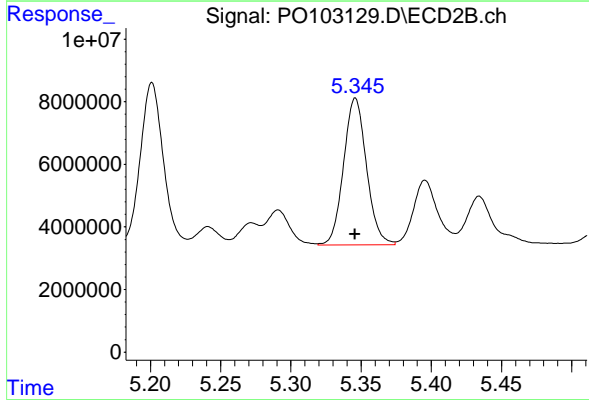
R.T.: 5.201 min
 Delta R.T.: 0.000 min
 Response: 59714281
 Conc: 443.95 ng/ml



#27 AR-1254-2

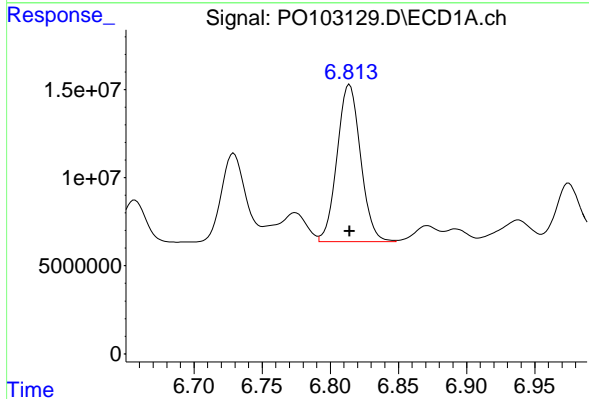
R.T.: 6.452 min
 Delta R.T.: 0.000 min
 Response: 109265696
 Conc: 466.52 ng/ml

Instrument :
 ECD_O
 ClientSampleId :
 AR1254CCC500



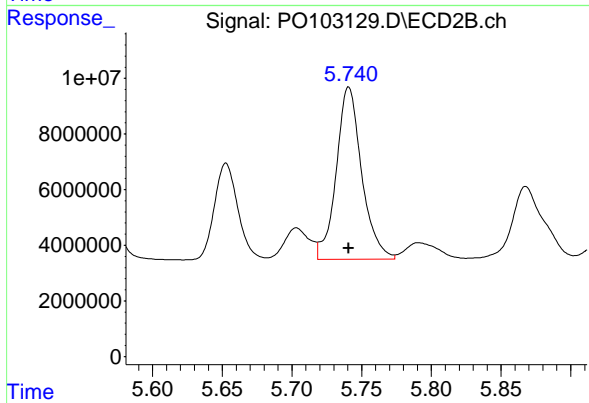
#27 AR-1254-2

R.T.: 5.346 min
 Delta R.T.: 0.000 min
 Response: 53404617
 Conc: 451.89 ng/ml



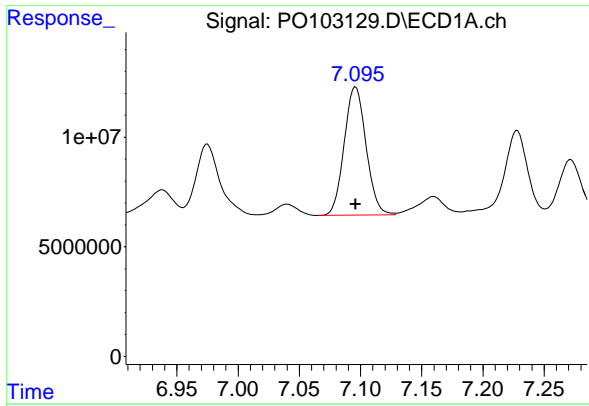
#28 AR-1254-3

R.T.: 6.814 min
 Delta R.T.: 0.000 min
 Response: 106977137
 Conc: 461.70 ng/ml



#28 AR-1254-3

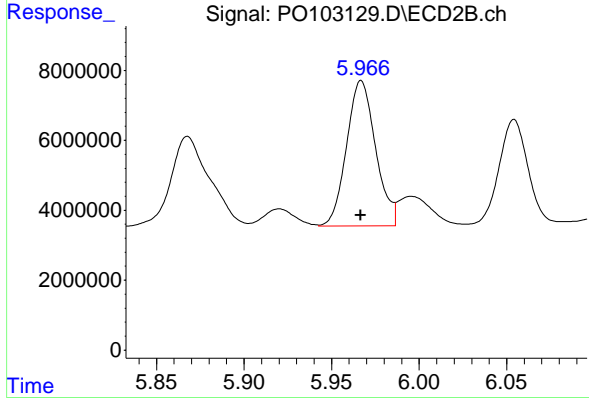
R.T.: 5.741 min
 Delta R.T.: 0.000 min
 Response: 78697959
 Conc: 449.43 ng/ml



#29 AR-1254-4

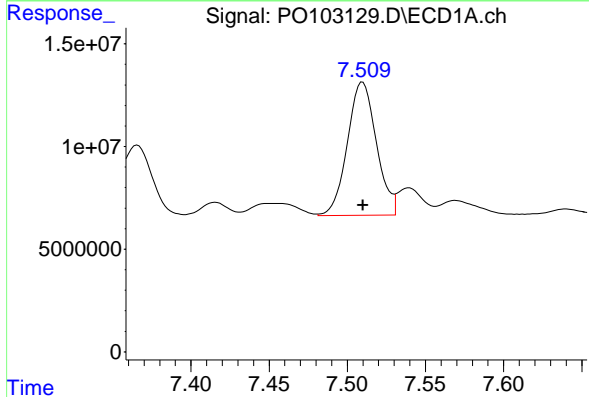
R.T.: 7.096 min
 Delta R.T.: 0.000 min
 Response: 72884137
 Conc: 491.25 ng/ml

Instrument :
 ECD_O
 ClientSampleId :
 AR1254CCC500



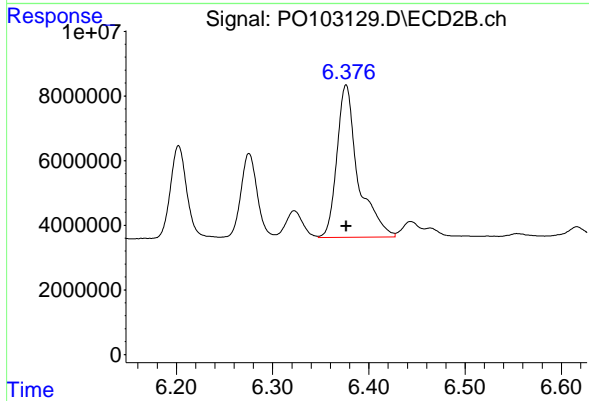
#29 AR-1254-4

R.T.: 5.967 min
 Delta R.T.: 0.000 min
 Response: 48104993
 Conc: 474.23 ng/ml



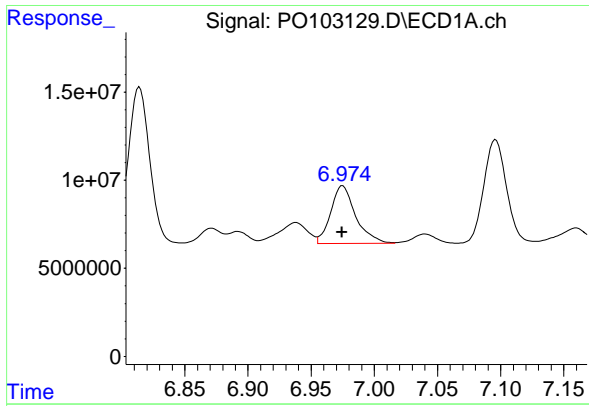
#30 AR-1254-5

R.T.: 7.510 min
 Delta R.T.: 0.000 min
 Response: 83752870
 Conc: 503.58 ng/ml



#30 AR-1254-5

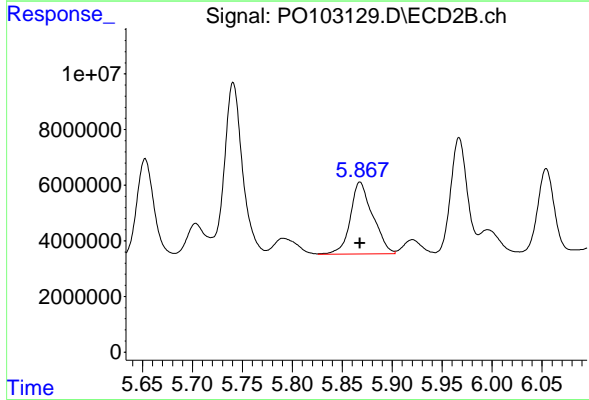
R.T.: 6.376 min
 Delta R.T.: 0.000 min
 Response: 72199282
 Conc: 479.22 ng/ml



#31 AR-1260-1

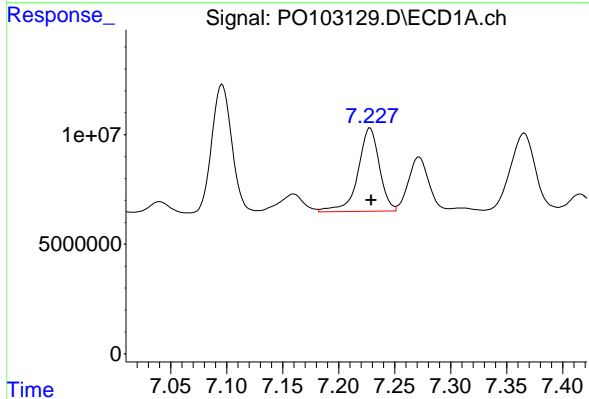
R.T.: 6.975 min
 Delta R.T.: 0.000 min
 Response: 45275464
 Conc: 255.55 ng/ml

Instrument :
 ECD_O
 ClientSampleId :
 AR1254CCC500



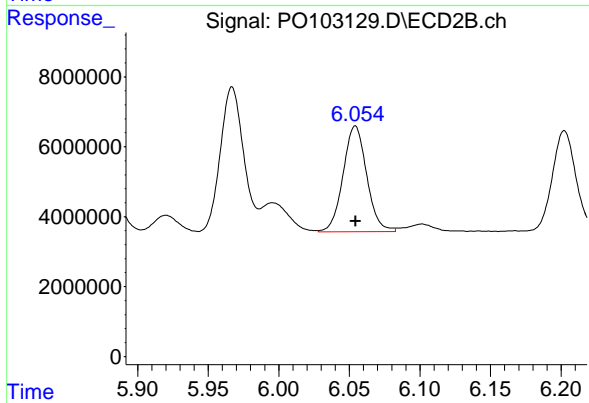
#31 AR-1260-1

R.T.: 5.868 min
 Delta R.T.: 0.000 min
 Response: 40318348
 Conc: 317.09 ng/ml



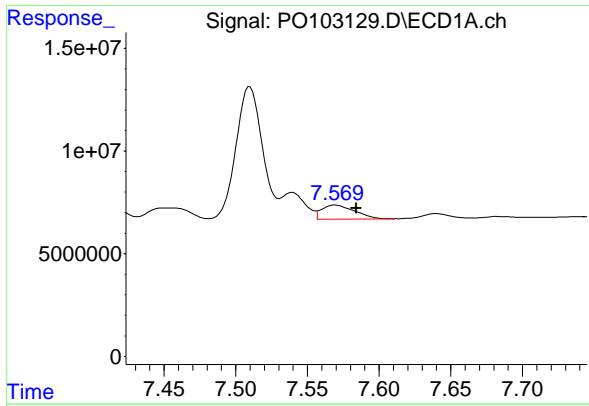
#32 AR-1260-2

R.T.: 7.228 min
 Delta R.T.: 0.000 min
 Response: 50473487
 Conc: 254.48 ng/ml



#32 AR-1260-2

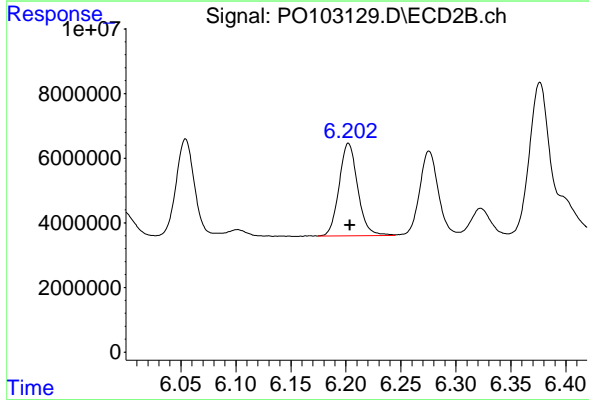
R.T.: 6.054 min
 Delta R.T.: 0.000 min
 Response: 35236209
 Conc: 229.43 ng/ml



#33 AR-1260-3

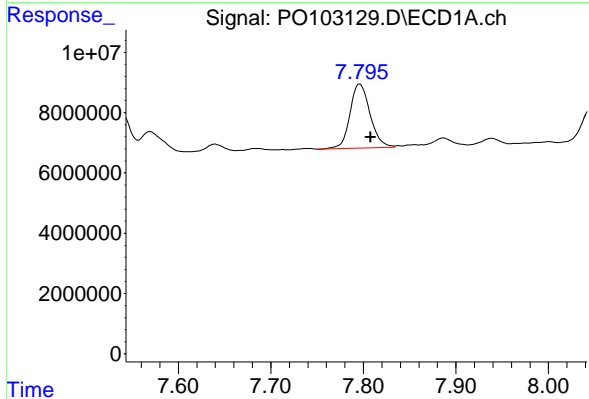
R.T.: 7.569 min
 Delta R.T.: -0.015 min
 Response: 10995157
 Conc: 77.73 ng/ml

Instrument :
 ECD_O
 ClientSampleId :
 AR1254CCC500



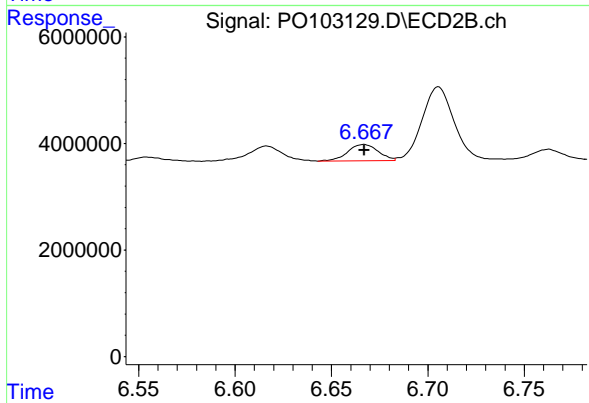
#33 AR-1260-3

R.T.: 6.202 min
 Delta R.T.: -0.002 min
 Response: 33728319
 Conc: 242.04 ng/ml



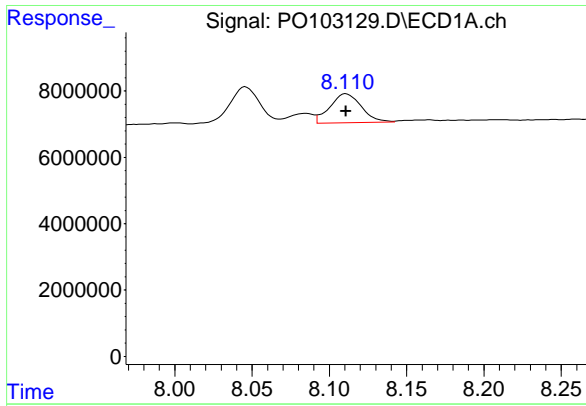
#34 AR-1260-4

R.T.: 7.796 min
 Delta R.T.: -0.012 min
 Response: 32083266
 Conc: 206.39 ng/ml



#34 AR-1260-4

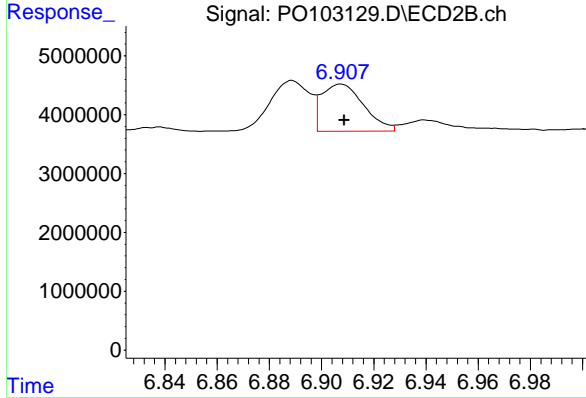
R.T.: 6.667 min
 Delta R.T.: 0.000 min
 Response: 3392327
 Conc: 30.84 ng/ml



#35 AR-1260-5

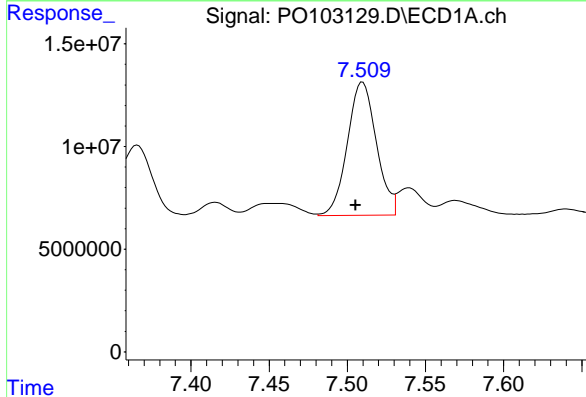
R.T.: 8.111 min
 Delta R.T.: 0.000 min
 Response: 12356477
 Conc: 41.42 ng/ml

Instrument :
 ECD_O
 ClientSampleId :
 AR1254CCC500



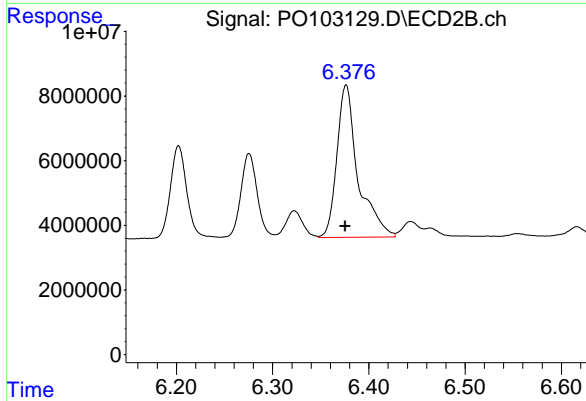
#35 AR-1260-5

R.T.: 6.907 min
 Delta R.T.: -0.001 min
 Response: 8988439
 Conc: 35.03 ng/ml



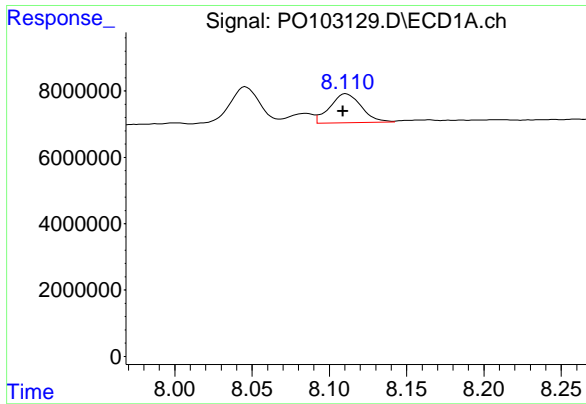
#36 AR-1262-1

R.T.: 7.510 min
 Delta R.T.: 0.004 min
 Response: 83752870
 Conc: 613.94 ng/ml



#36 AR-1262-1

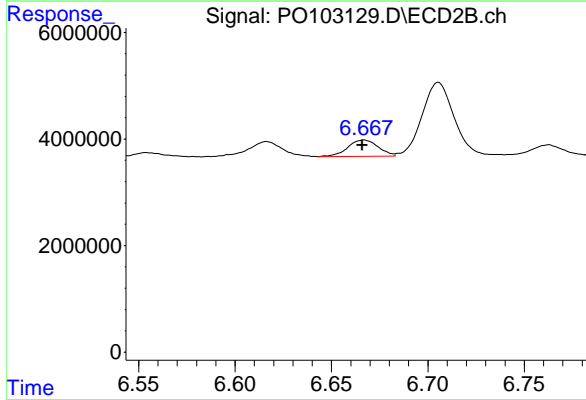
R.T.: 6.376 min
 Delta R.T.: 0.000 min
 Response: 72199282
 Conc: 891.34 ng/ml



#37 AR-1262-2

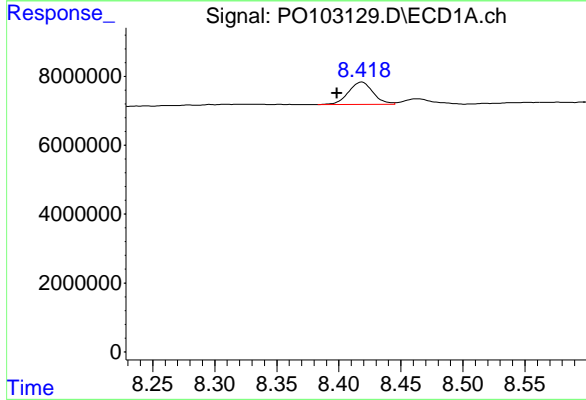
R.T.: 8.111 min
 Delta R.T.: 0.002 min
 Response: 12356477
 Conc: 36.87 ng/ml

Instrument :
 ECD_O
 ClientSampleId :
 AR1254CCC500



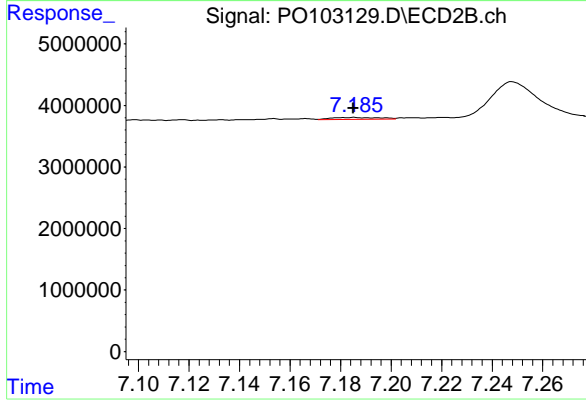
#37 AR-1262-2

R.T.: 6.667 min
 Delta R.T.: 0.000 min
 Response: 3392327
 Conc: 23.66 ng/ml



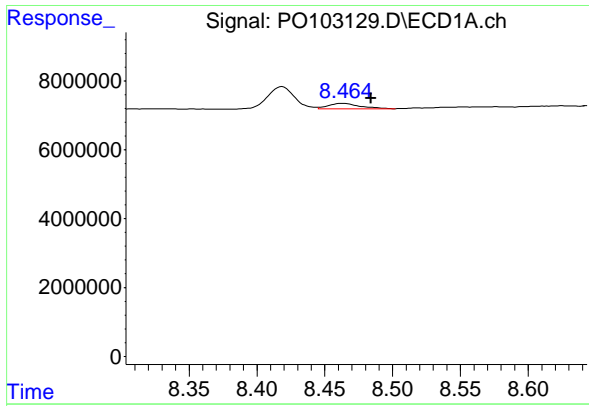
#38 AR-1262-3

R.T.: 8.419 min
 Delta R.T.: 0.020 min
 Response: 9102042
 Conc: 41.17 ng/ml



#38 AR-1262-3

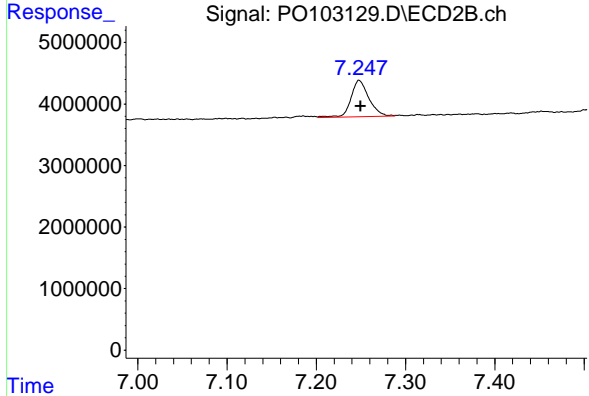
R.T.: 7.185 min
 Delta R.T.: 0.000 min
 Response: 379650
 Conc: 3.13 ng/ml



#39 AR-1262-4

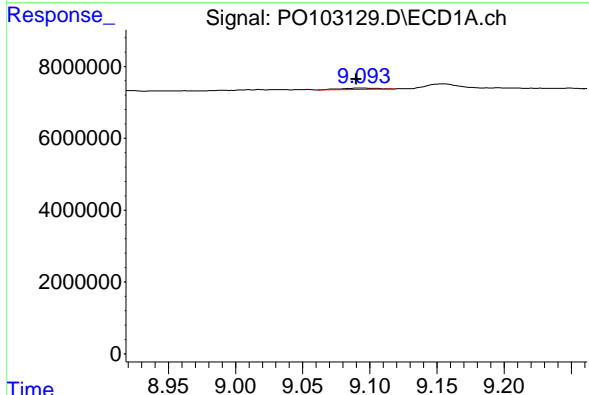
R.T.: 8.464 min
 Delta R.T.: -0.020 min
 Response: 2618022
 Conc: 15.06 ng/ml

Instrument : ECD_O
 ClientSampleId : AR1254CCC500



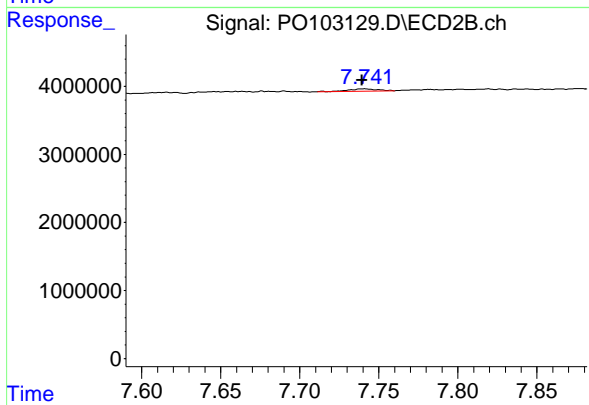
#39 AR-1262-4

R.T.: 7.248 min
 Delta R.T.: -0.002 min
 Response: 8234612
 Conc: 40.00 ng/ml



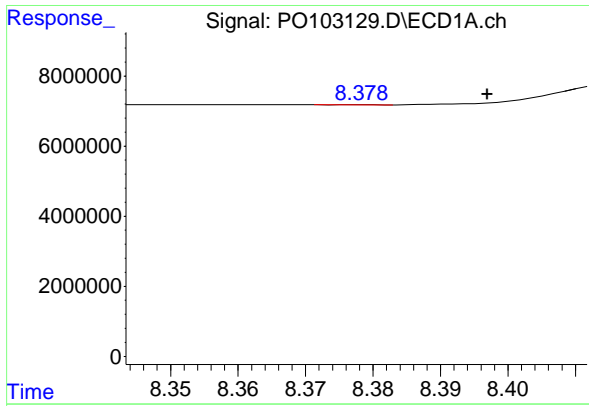
#40 AR-1262-5

R.T.: 9.094 min
 Delta R.T.: 0.004 min
 Response: 649977
 Conc: 5.54 ng/ml



#40 AR-1262-5

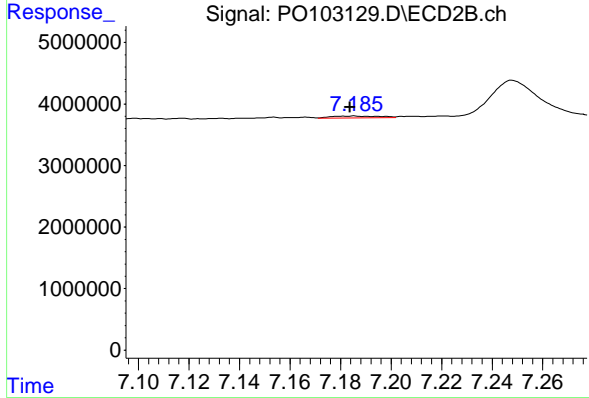
R.T.: 7.741 min
 Delta R.T.: 0.002 min
 Response: 408588
 Conc: 4.64 ng/ml



#41 AR-1268-1

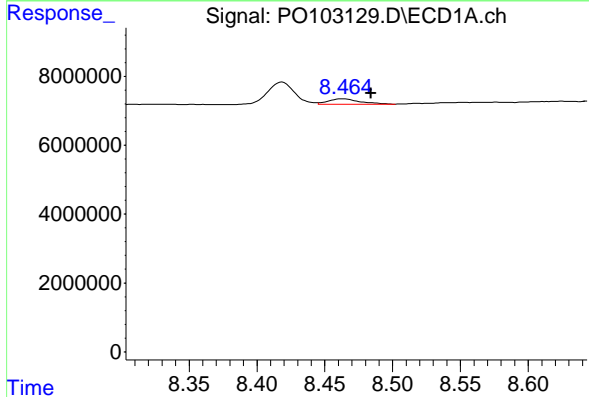
R.T.: 8.378 min
 Delta R.T.: -0.019 min
 Response: 17314
 Conc: 0.04 ng/ml

Instrument :
 ECD_O
 ClientSampleId :
 AR1254CCC500



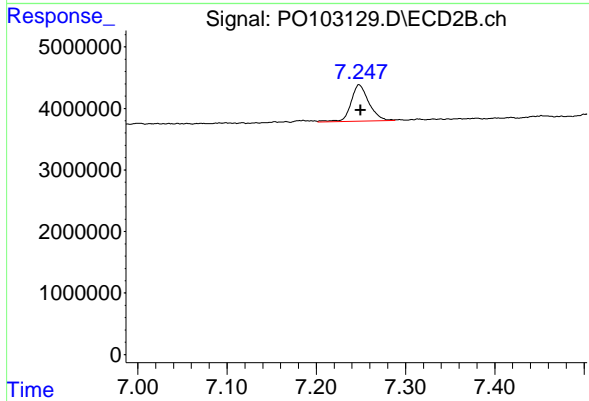
#41 AR-1268-1

R.T.: 7.185 min
 Delta R.T.: 0.002 min
 Response: 379650
 Conc: 1.07 ng/ml



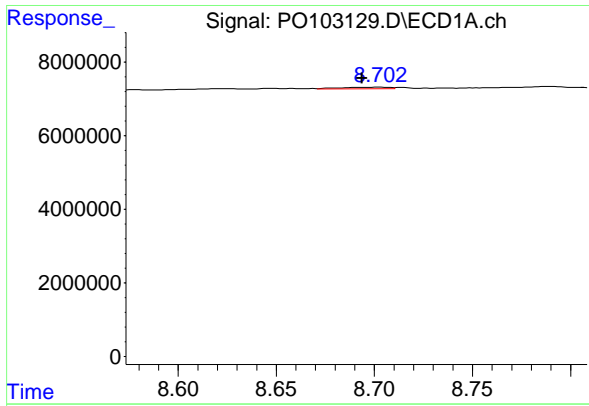
#42 AR-1268-2

R.T.: 8.464 min
 Delta R.T.: -0.020 min
 Response: 2618022
 Conc: 7.02 ng/ml



#42 AR-1268-2

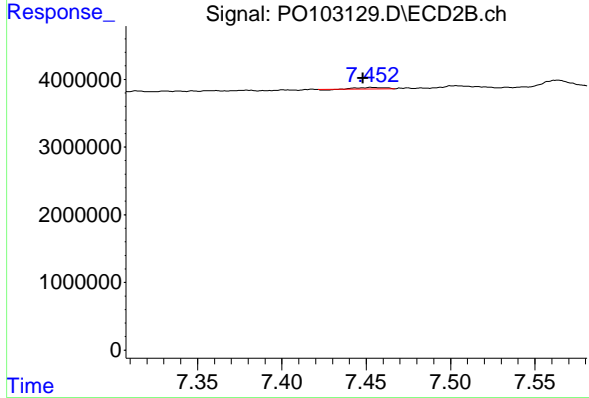
R.T.: 7.248 min
 Delta R.T.: -0.002 min
 Response: 8234612
 Conc: 25.90 ng/ml



#43 AR-1268-3

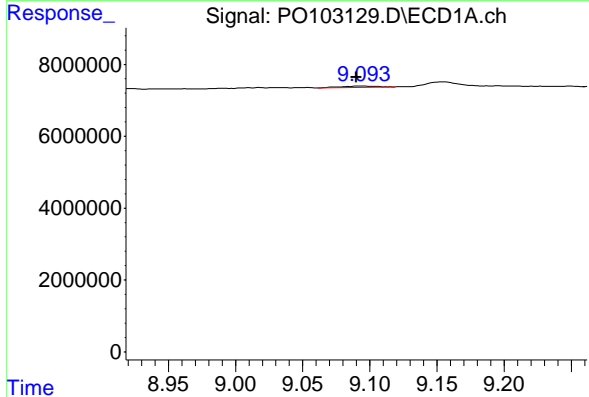
R.T.: 8.703 min
 Delta R.T.: 0.009 min
 Response: 728559
 Conc: 2.20 ng/ml

Instrument :
 ECD_O
 ClientSampleId :
 AR1254CCC500



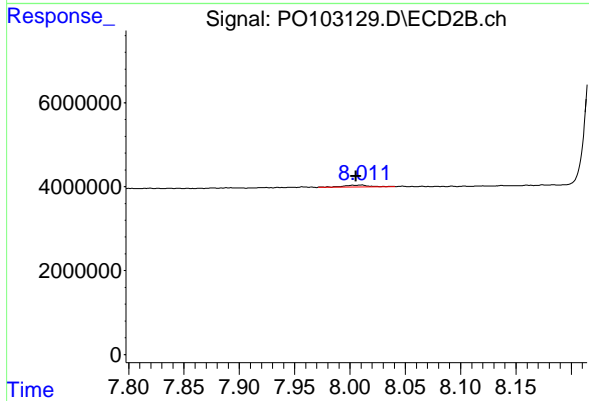
#43 AR-1268-3

R.T.: 7.453 min
 Delta R.T.: 0.005 min
 Response: 203377
 Conc: 0.75 ng/ml



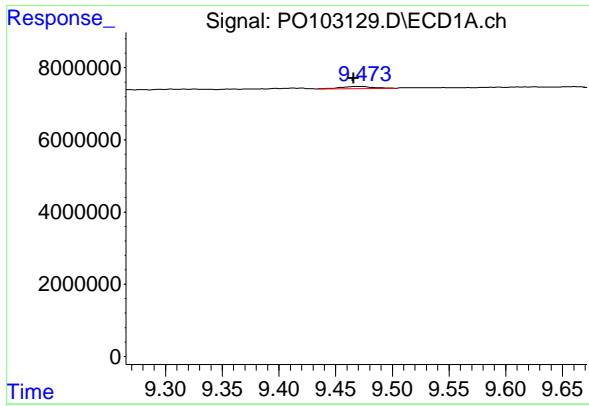
#44 AR-1268-4

R.T.: 9.094 min
 Delta R.T.: 0.004 min
 Response: 649977
 Conc: 4.98 ng/ml



#44 AR-1268-4

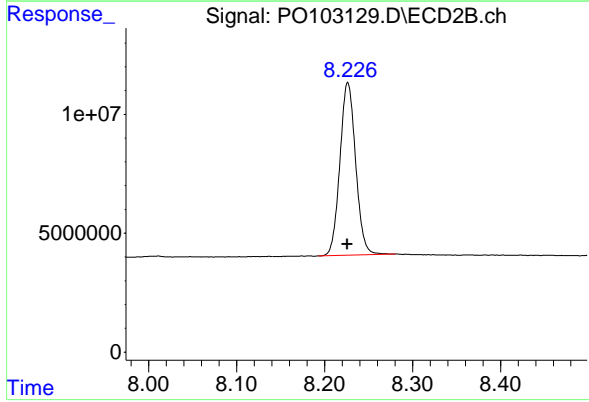
R.T.: 8.008 min
 Delta R.T.: 0.003 min
 Response: 805564
 Conc: 1.11 ng/ml



#45 AR-1268-5

R.T.: 9.473 min
 Delta R.T.: 0.008 min
 Response: 1174312
 Conc: 1.12 ng/ml

Instrument :
 ECD_O
 ClientSampleId :
 AR1254CCC500



#45 AR-1268-5

R.T.: 8.227 min
 Delta R.T.: 0.000 min
 Response: 90223600
 Conc: 291.05 ng/ml