

Data Path : Z:\pestpcbsrv\HPCHEM1\ECD_O\Data\P0042424\
 Data File : P0103164.D
 Signal(s) : Signal #1: ECD1A.ch Signal #2: ECD2B.ch
 Acq On : 25 Apr 2024 02:39
 Operator : YP/AJ
 Sample : P2243-08 10X
 Misc :
 ALS Vial : 40 Sample Multiplier: 1

Instrument :
 ECD_O
 ClientSampleId :
 KZZ0660-1-2

Integration File signal 1: autoint1.e
 Integration File signal 2: autoint2.e
 Quant Time: Apr 25 04:16:59 2024
 Quant Method : Z:\pestpcbsrv\HPCHEM1\ECD_O\methods\P0042224.M
 Quant Title : GC EXTRACTABLES
 QLast Update : Tue Apr 23 02:20:10 2024
 Response via : Initial Calibration
 Integrator: ChemStation

Volume Inj. : 2 µl
 Signal #1 Phase : ZB-MR1 Signal #2 Phase: ZB-MR2
 Signal #1 Info : 30Mx0.32mmx 0.50µ Signal #2 Info : 30M x 0.32mm x 0.25µm

| Compound | RT#1 | RT#2 | Resp#1 | Resp#2 | ng/ml | ng/ml |
|-----------------------------|--------|-------|---------|---------|--------|-----------|
| ----- | | | | | | |
| System Monitoring Compounds | | | | | | |
| 1) SA Tetrachlo... | 4.252 | 3.370 | 8511571 | 4701159 | 1.688 | 1.699 |
| 2) SA Decachlor... | 9.768 | 8.222 | 7849201 | 2873385 | 2.703 | 1.674 # |
| Target Compounds | | | | | | |
| 3) L1 AR-1016-1 | 5.397 | 4.419 | 268080 | 100646 | 1.826 | 1.280 # |
| 4) L1 AR-1016-2 | 5.437 | 4.430 | 476003 | 76987 | 2.204 | 0.656 # |
| 5) L1 AR-1016-3 | 5.498 | 4.597 | 2987113 | 171755 | 21.963 | 2.773 # |
| 6) L1 AR-1016-4 | 5.573 | 4.649 | 1463233 | 1794967 | 13.554 | 33.885 # |
| 7) L1 AR-1016-5 | 5.865 | 4.854 | 1465568 | 3303541 | 13.982 | 48.450 # |
| 8) L2 AR-1221-1 | 4.426 | 3.575 | 153298 | 38993 | 2.639 | 1.247 # |
| 9) L2 AR-1221-2 | 4.538 | 3.669 | 45428 | 147656 | 1.072 | 6.223 # |
| 10) L2 AR-1221-3 | 4.619 | 3.720 | 48981 | 41401 | 0.384 | 0.584 # |
| 11) L3 AR-1232-1 | 4.619 | 3.720 | 48981 | 41401 | 0.489 | 0.724 # |
| 12) L3 AR-1232-2 | 5.187f | 4.430 | 82758 | 76987 | 1.455 | 1.411 |
| 13) L3 AR-1232-3 | 5.437 | 4.597 | 476003 | 171755 | 4.833 | 6.020 |
| 14) L3 AR-1232-4 | 5.573 | 4.687 | 1463233 | 1286461 | 30.502 | 47.506 # |
| 15) L3 AR-1232-5 | 5.662 | 4.854 | 3095171 | 3303541 | 76.953 | 113.535 # |
| 16) L4 AR-1242-1 | 5.397 | 4.419 | 268080 | 100646 | 2.198 | 1.518 # |
| 17) L4 AR-1242-2 | 5.437 | 4.430 | 476003 | 76987 | 2.658 | 0.789 # |
| 18) L4 AR-1242-3 | 5.498 | 4.597 | 2987113 | 171755 | 26.419 | 3.204 # |
| 19) L4 AR-1242-4 | 5.573 | 4.687 | 1463233 | 1286461 | 16.390 | 23.327 # |
| 20) L4 AR-1242-5 | 6.301 | 5.198 | 2097253 | 2205086 | 25.095 | 34.843 # |
| 21) L5 AR-1248-1 | 5.397 | 4.419 | 268080 | 100646 | 2.999 | 2.027 # |
| 22) L5 AR-1248-2 | 5.662 | 4.649 | 3095171 | 1794967 | 22.436 | 23.847 |
| 23) L5 AR-1248-3 | 5.865 | 4.687 | 1465568 | 1286461 | 10.331 | 16.562 # |
| 24) L5 AR-1248-4 | 6.261 | 4.854 | 1902273 | 3303541 | 13.420 | 36.836 # |
| 25) L5 AR-1248-5 | 6.301 | 5.238 | 2097253 | 386654 | 15.255 | 4.823 # |
| 26) L6 AR-1254-1 | 6.234 | 5.198 | 3248066 | 2205086 | 20.463 | 16.394 |
| 27) L6 AR-1254-2 | 6.448 | 5.343 | 3558927 | 1682965 | 15.195 | 14.241 |
| 28) L6 AR-1254-3 | 6.810 | 5.737 | 4537853 | 2916906 | 19.585 | 16.658 |
| 29) L6 AR-1254-4 | 7.091 | 5.964 | 4369527 | 1454269 | 29.451 | 14.336 # |
| 30) L6 AR-1254-5 | 7.507 | 6.372 | 2991216 | 2077963 | 17.985 | 13.793 |
| 31) L7 AR-1260-1 | 6.971 | 5.864 | 1800777 | 1137448 | 10.164 | 8.946 |
| 32) L7 AR-1260-2 | 7.224 | 6.050 | 3790094 | 1267177 | 19.109 | 8.251 # |
| 33) L7 AR-1260-3 | 7.579 | 6.199 | 888712 | 1769168 | 6.282 | 12.696 # |
| 34) L7 AR-1260-4 | 7.798 | 6.661 | 2291601 | 385332 | 14.741 | 3.503 # |
| 35) L7 AR-1260-5 | 8.105 | 6.905 | 1761219 | 948165 | 5.903 | 3.696 # |
| 36) L8 AR-1262-1 | 7.507 | 6.372 | 2991216 | 2077963 | 21.927 | 25.654 |
| 37) L8 AR-1262-2 | 8.105 | 6.661 | 1761219 | 385332 | 5.256 | 2.687 # |
| 38) L8 AR-1262-3 | 8.403 | 7.186 | 205775 | 204815 | 0.931 | 1.688 # |
| 39) L8 AR-1262-4 | 8.486 | 7.243 | 160191 | 1001526 | 0.922 | 4.865 # |
| 40) L8 AR-1262-5 | 9.088 | 7.736 | 95789 | 102765 | 0.816 | 1.168 # |
| 41) L9 AR-1268-1 | 8.403 | 7.186 | 205775 | 204815 | 0.521 | 0.578 |

Data Path : Z:\pestpcbsrv\HPCHEM1\ECD_0\Data\P0042424\
 Data File : P0103164.D
 Signal(s) : Signal #1: ECD1A.ch Signal #2: ECD2B.ch
 Acq On : 25 Apr 2024 02:39
 Operator : YP/AJ
 Sample : P2243-08 10X
 Misc :
 ALS Vial : 40 Sample Multiplier: 1

Instrument :
 ECD_0
 ClientSampleId :
 KZZ0660-1-2

Integration File signal 1: autoint1.e
 Integration File signal 2: autoint2.e
 Quant Time: Apr 25 04:16:59 2024
 Quant Method : Z:\pestpcbsrv\HPCHEM1\ECD_0\methods\P0042224.M
 Quant Title : GC EXTRACTABLES
 QLast Update : Tue Apr 23 02:20:10 2024
 Response via : Initial Calibration
 Integrator: ChemStation

Volume Inj. : 2 µl
 Signal #1 Phase : ZB-MR1 Signal #2 Phase: ZB-MR2
 Signal #1 Info : 30Mx0.32mmx 0.50µ Signal #2 Info : 30M x 0.32mm x 0.25µm

| | Compound | RT#1 | RT#2 | Resp#1 | Resp#2 | ng/ml | ng/ml |
|-----|--------------|-------|-------|--------|---------|-------|---------|
| 42) | L9 AR-1268-2 | 8.486 | 7.243 | 160191 | 1001526 | 0.430 | 3.150 # |
| 43) | L9 AR-1268-3 | 8.692 | 7.442 | 160027 | 210881 | 0.483 | 0.777 # |
| 44) | L9 AR-1268-4 | 9.088 | 8.000 | 95789 | 299594 | 0.734 | 0.414 # |
| 45) | L9 AR-1268-5 | 9.456 | 8.222 | 912873 | 2873385 | 0.869 | 9.269 # |

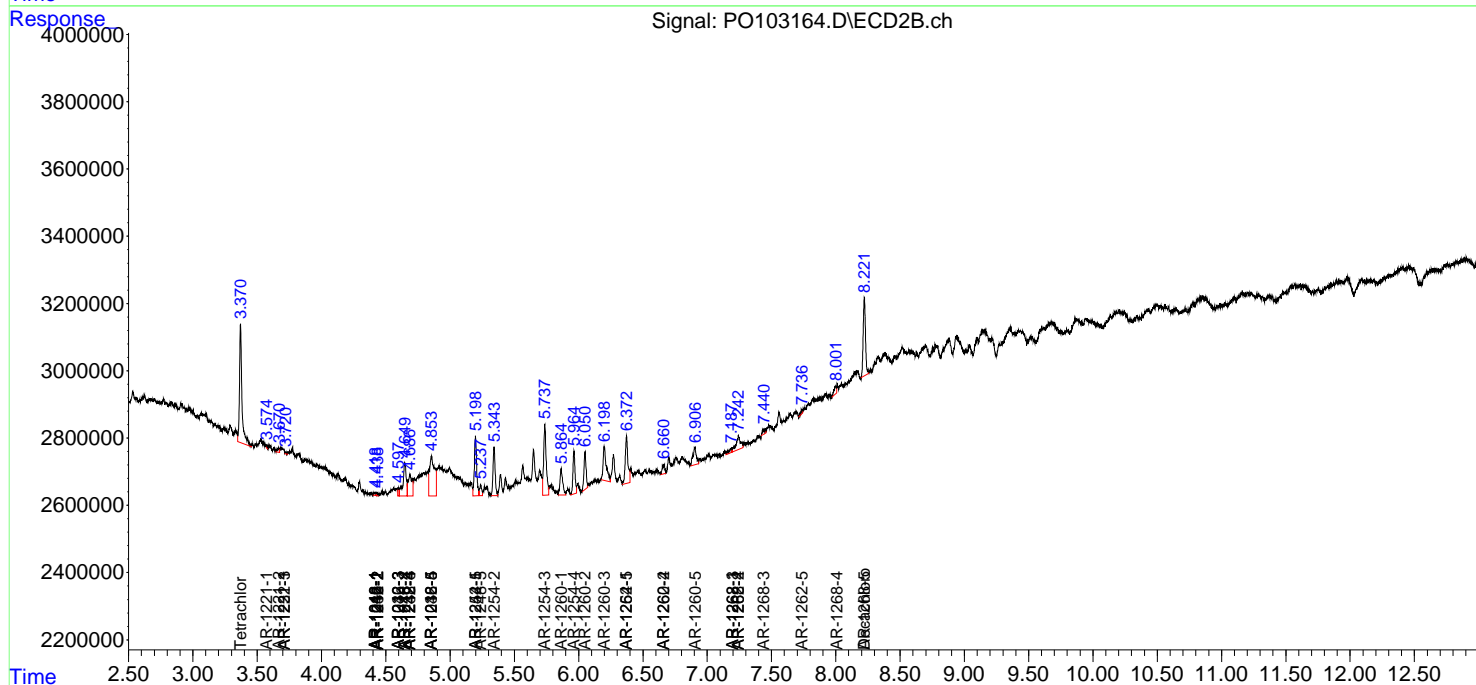
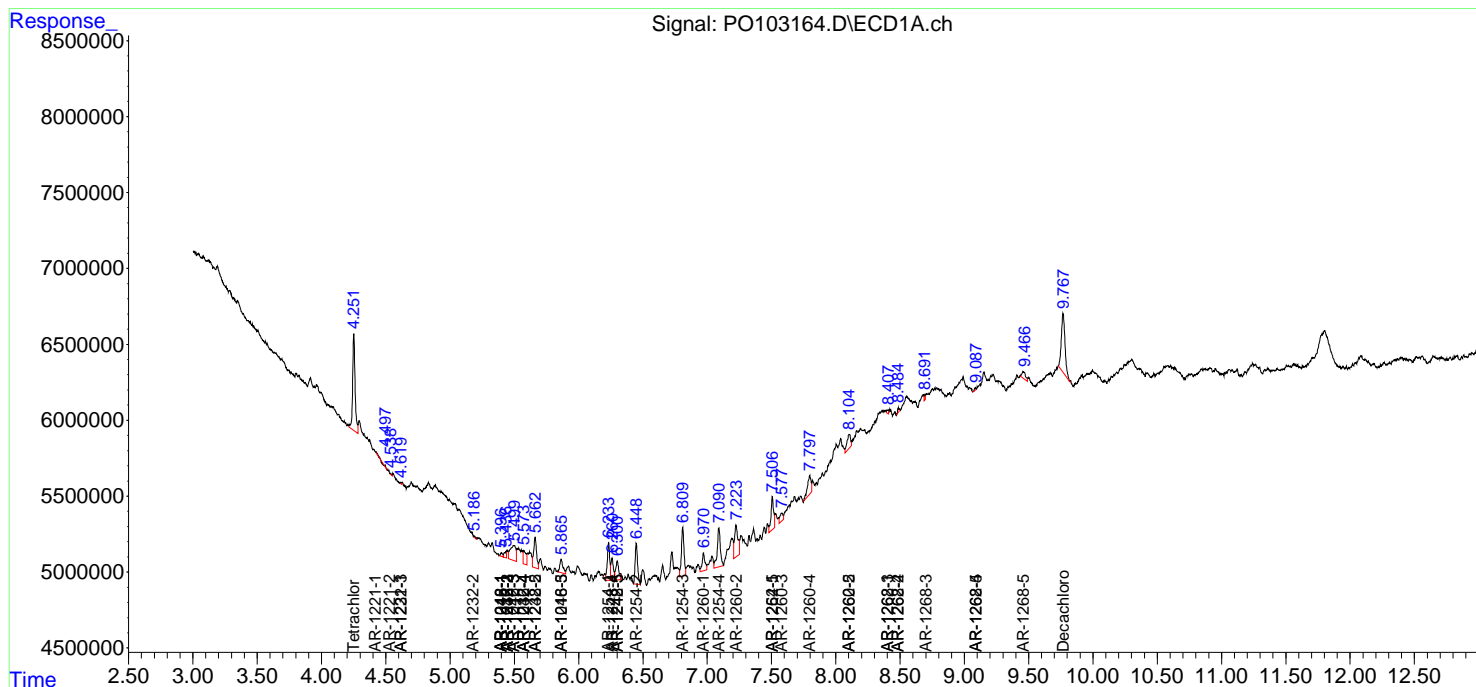
(f)=RT Delta > 1/2 Window (#)=Amounts differ by > 25% (m)=manual int.

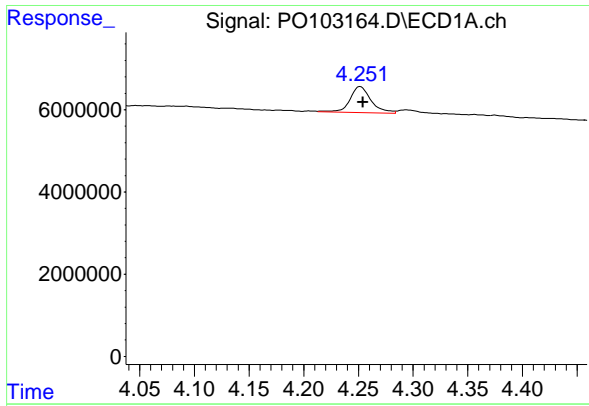
Data Path : Z:\pestpcbsrv\HPCHEM1\ECD_O\Data\PO042424\
 Data File : PO103164.D
 Signal(s) : Signal #1: ECD1A.ch Signal #2: ECD2B.ch
 Acq On : 25 Apr 2024 02:39
 Operator : YP/AJ
 Sample : P2243-08 10X
 Misc :
 ALS Vial : 40 Sample Multiplier: 1

Instrument :
 ECD_O
 ClientSampleId :
 KZZ0660-1-2

Integration File signal 1: autoint1.e
 Integration File signal 2: autoint2.e
 Quant Time: Apr 25 04:16:59 2024
 Quant Method : Z:\pestpcbsrv\HPCHEM1\ECD_O\methods\PO042224.M
 Quant Title : GC EXTRACTABLES
 QLast Update : Tue Apr 23 02:20:10 2024
 Response via : Initial Calibration
 Integrator: ChemStation

Volume Inj. : 2 µl
 Signal #1 Phase : ZB-MR1 Signal #2 Phase: ZB-MR2
 Signal #1 Info : 30Mx0.32mmx 0.50µ Signal #2 Info : 30M x 0.32mm x 0.25µm

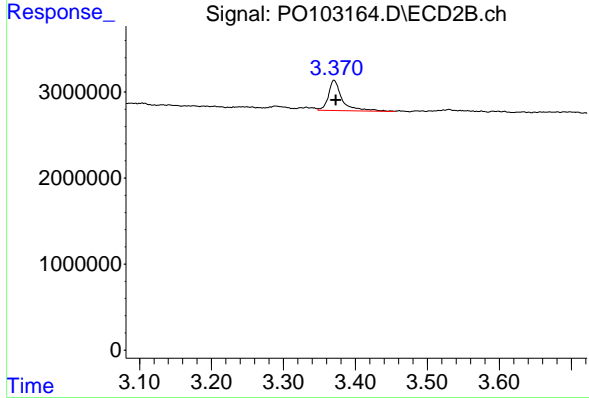




#1 Tetrachloro-m-xylene

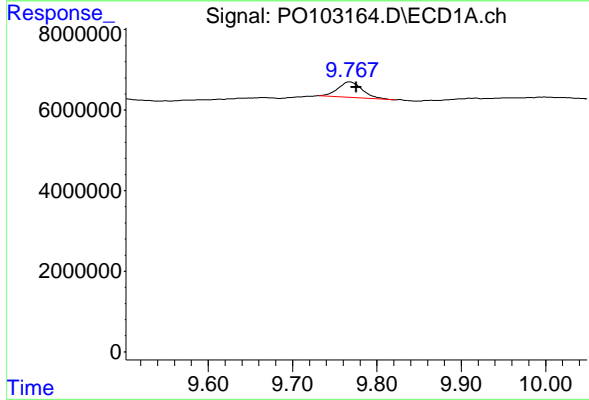
R.T.: 4.252 min
 Delta R.T.: -0.002 min
 Response: 8511571
 Conc: 1.69 ng/ml

Instrument :
 ECD_O
 ClientSampleId :
 KZZ0660-1-2



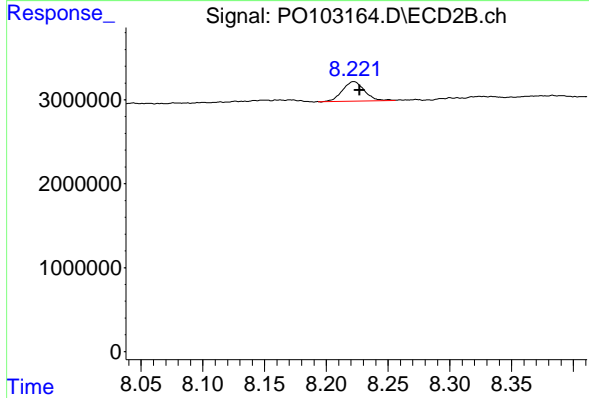
#1 Tetrachloro-m-xylene

R.T.: 3.370 min
 Delta R.T.: -0.003 min
 Response: 4701159
 Conc: 1.70 ng/ml



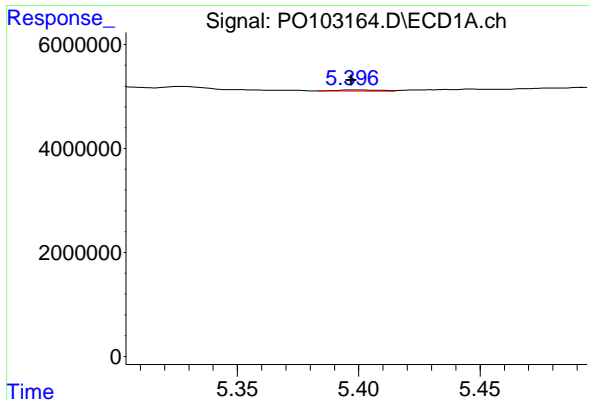
#2 Decachlorobiphenyl

R.T.: 9.768 min
 Delta R.T.: -0.008 min
 Response: 7849201
 Conc: 2.70 ng/ml



#2 Decachlorobiphenyl

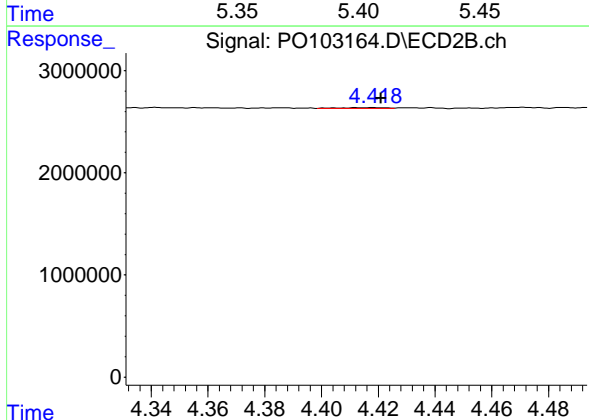
R.T.: 8.222 min
 Delta R.T.: -0.005 min
 Response: 2873385
 Conc: 1.67 ng/ml



#3 AR-1016-1

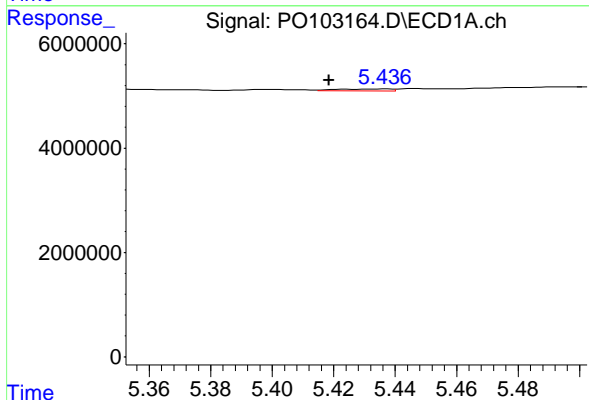
R.T.: 5.397 min
 Delta R.T.: 0.000 min
 Response: 268080
 Conc: 1.83 ng/ml

Instrument :
 ECD_O
 ClientSampleId :
 KZZ0660-1-2



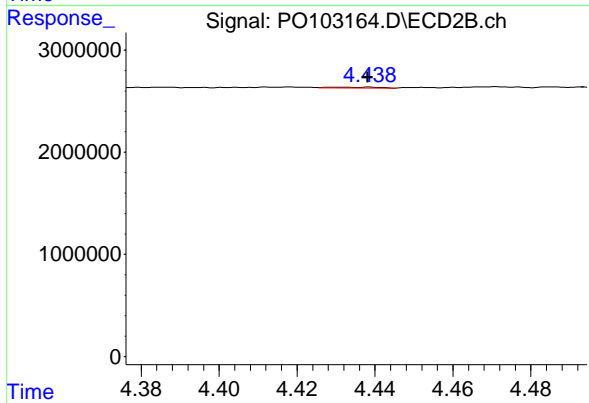
#3 AR-1016-1

R.T.: 4.419 min
 Delta R.T.: -0.002 min
 Response: 100646
 Conc: 1.28 ng/ml



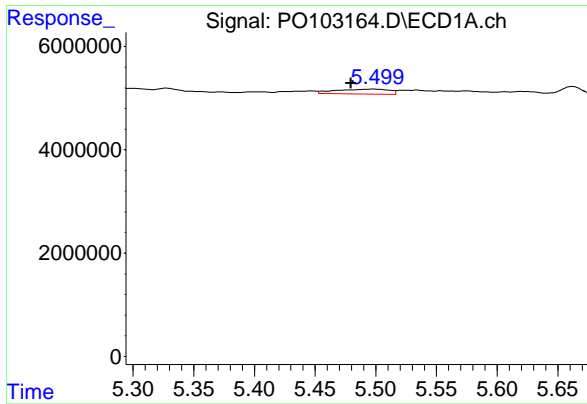
#4 AR-1016-2

R.T.: 5.437 min
 Delta R.T.: 0.019 min
 Response: 476003
 Conc: 2.20 ng/ml



#4 AR-1016-2

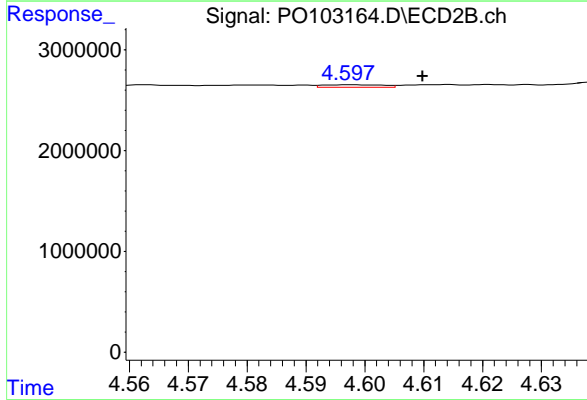
R.T.: 4.430 min
 Delta R.T.: -0.008 min
 Response: 76987
 Conc: 0.66 ng/ml



#5 AR-1016-3

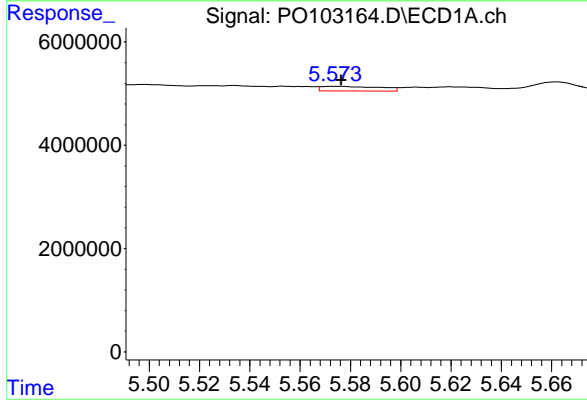
R.T.: 5.498 min
 Delta R.T.: 0.018 min
 Response: 2987113
 Conc: 21.96 ng/ml

Instrument :
 ECD_O
 ClientSampleId :
 KZZ0660-1-2



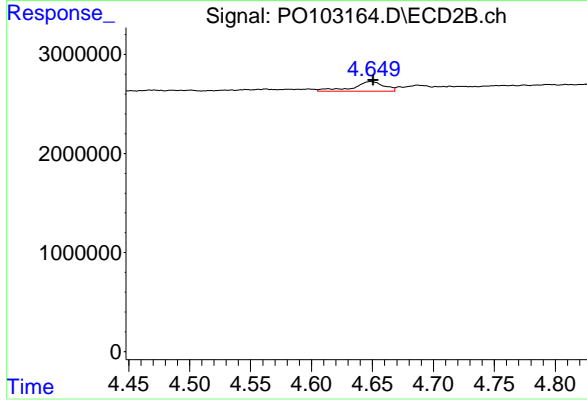
#5 AR-1016-3

R.T.: 4.597 min
 Delta R.T.: -0.013 min
 Response: 171755
 Conc: 2.77 ng/ml



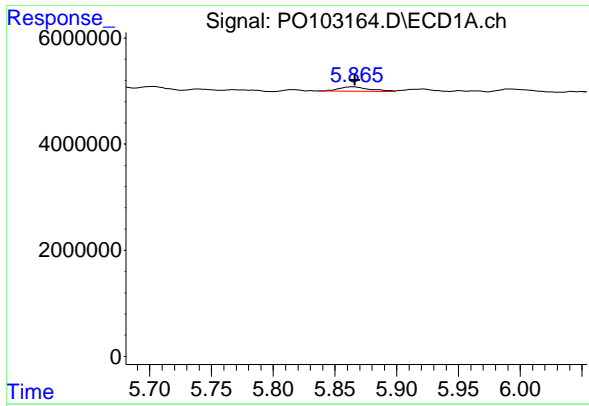
#6 AR-1016-4

R.T.: 5.573 min
 Delta R.T.: -0.003 min
 Response: 1463233
 Conc: 13.55 ng/ml



#6 AR-1016-4

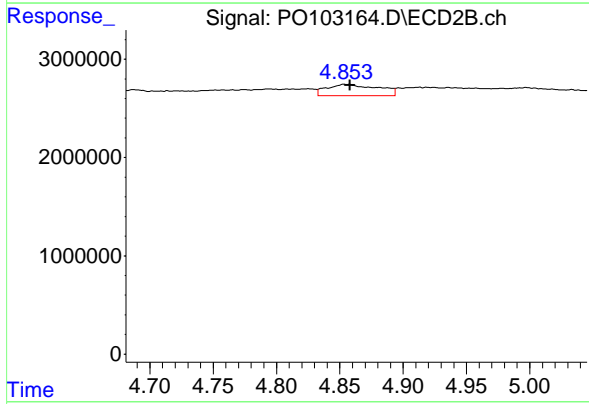
R.T.: 4.649 min
 Delta R.T.: -0.002 min
 Response: 1794967
 Conc: 33.89 ng/ml



#7 AR-1016-5

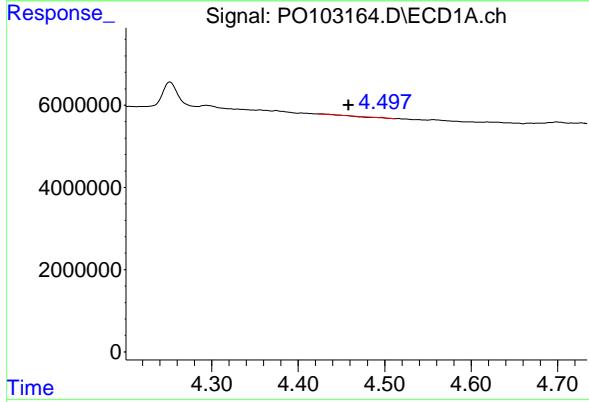
R.T.: 5.865 min
 Delta R.T.: -0.001 min
 Response: 1465568
 Conc: 13.98 ng/ml

Instrument :
 ECD_O
 ClientSampleId :
 KZZ0660-1-2



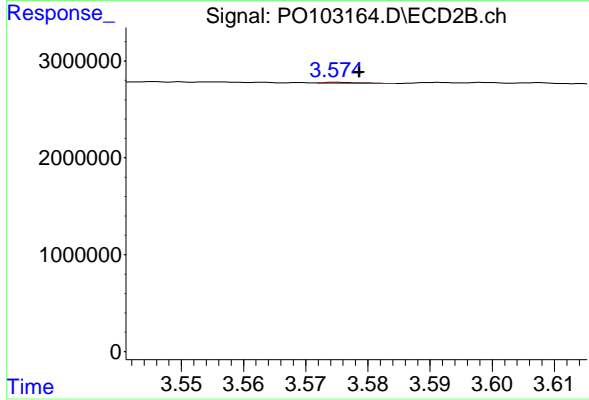
#7 AR-1016-5

R.T.: 4.854 min
 Delta R.T.: -0.004 min
 Response: 3303541
 Conc: 48.45 ng/ml



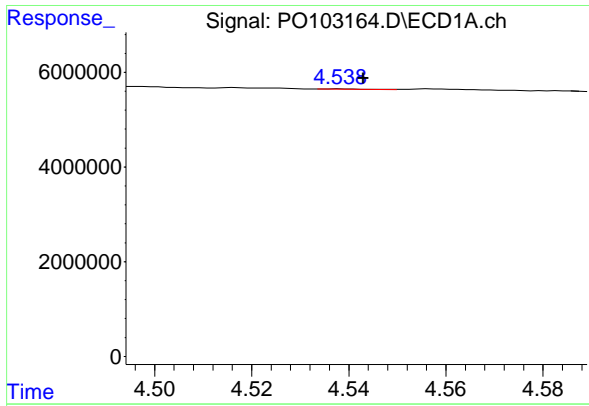
#8 AR-1221-1

R.T.: 4.426 min
 Delta R.T.: -0.032 min
 Response: 153298
 Conc: 2.64 ng/ml



#8 AR-1221-1

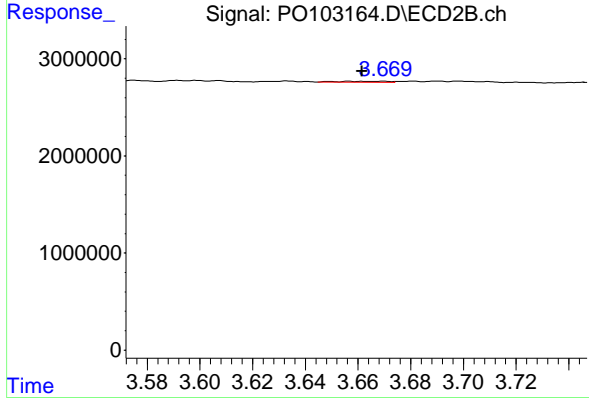
R.T.: 3.575 min
 Delta R.T.: -0.004 min
 Response: 38993
 Conc: 1.25 ng/ml



#9 AR-1221-2

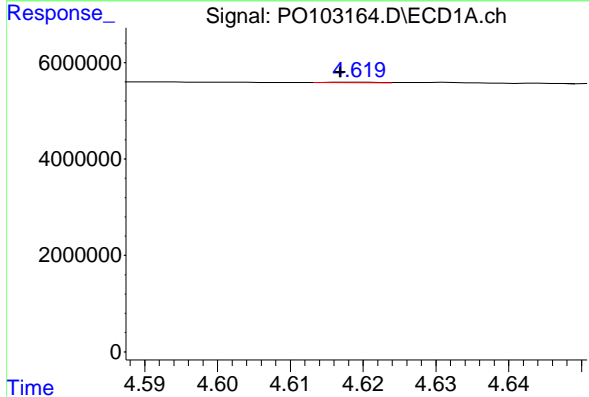
R.T.: 4.538 min
 Delta R.T.: -0.005 min
 Response: 45428
 Conc: 1.07 ng/ml

Instrument :
 ECD_O
 ClientSampleId :
 KZZ0660-1-2



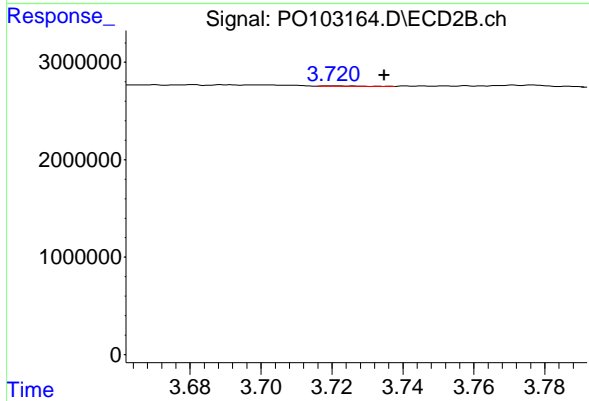
#9 AR-1221-2

R.T.: 3.669 min
 Delta R.T.: 0.008 min
 Response: 147656
 Conc: 6.22 ng/ml



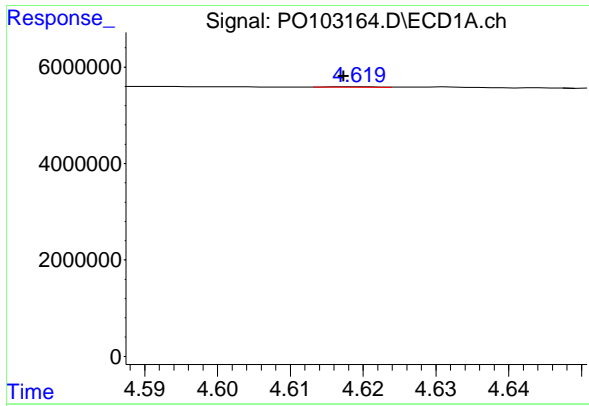
#10 AR-1221-3

R.T.: 4.619 min
 Delta R.T.: 0.002 min
 Response: 48981
 Conc: 0.38 ng/ml



#10 AR-1221-3

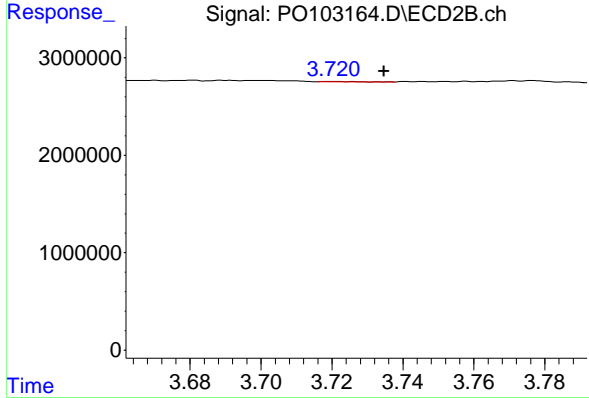
R.T.: 3.720 min
 Delta R.T.: -0.015 min
 Response: 41401
 Conc: 0.58 ng/ml



#11 AR-1232-1

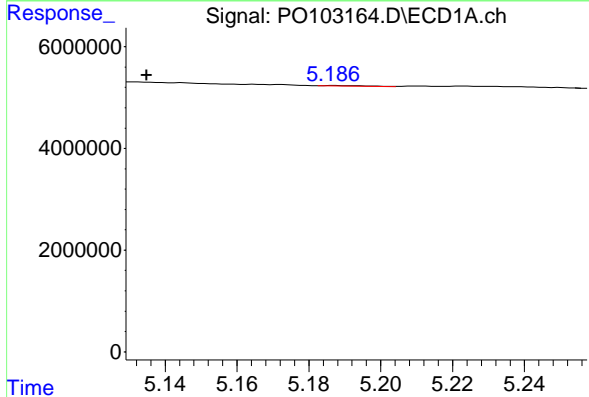
R.T.: 4.619 min
 Delta R.T.: 0.002 min
 Response: 48981
 Conc: 0.49 ng/ml

Instrument :
 ECD_O
 ClientSampleId :
 KZZ0660-1-2



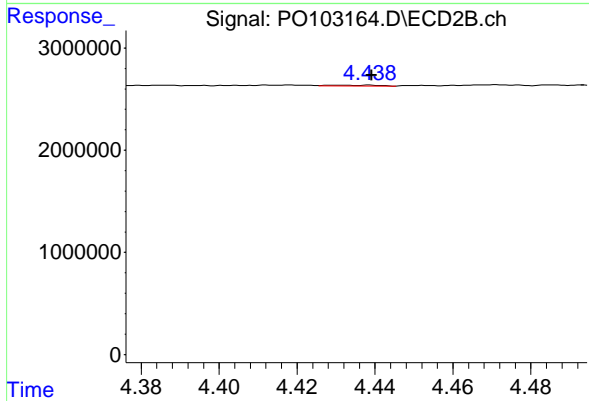
#11 AR-1232-1

R.T.: 3.720 min
 Delta R.T.: -0.015 min
 Response: 41401
 Conc: 0.72 ng/ml



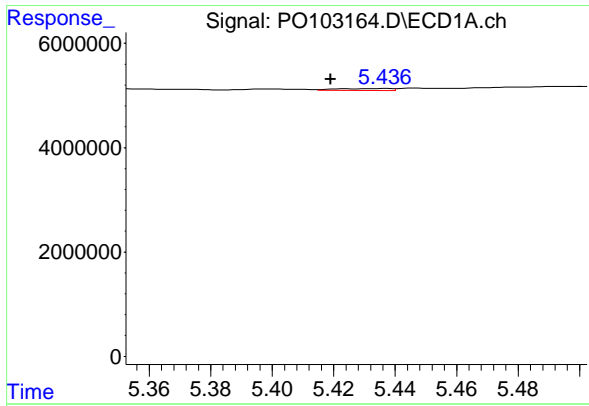
#12 AR-1232-2

R.T.: 5.187 min
 Delta R.T.: 0.052 min
 Response: 82758
 Conc: 1.46 ng/ml



#12 AR-1232-2

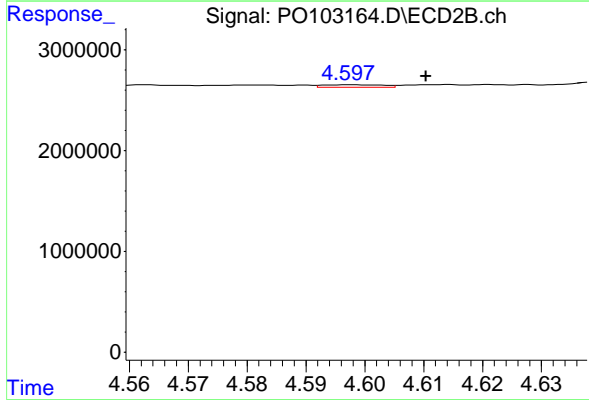
R.T.: 4.430 min
 Delta R.T.: -0.009 min
 Response: 76987
 Conc: 1.41 ng/ml



#13 AR-1232-3

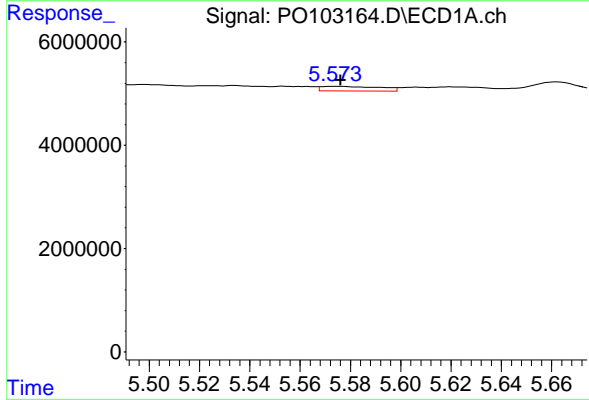
R.T.: 5.437 min
 Delta R.T.: 0.018 min
 Response: 476003
 Conc: 4.83 ng/ml

Instrument :
 ECD_O
 ClientSampleId :
 KZZ0660-1-2



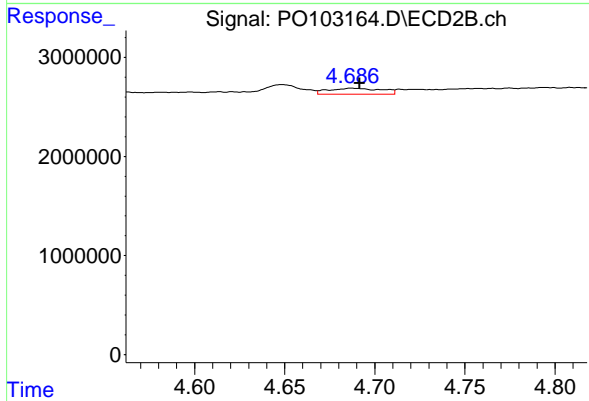
#13 AR-1232-3

R.T.: 4.597 min
 Delta R.T.: -0.013 min
 Response: 171755
 Conc: 6.02 ng/ml



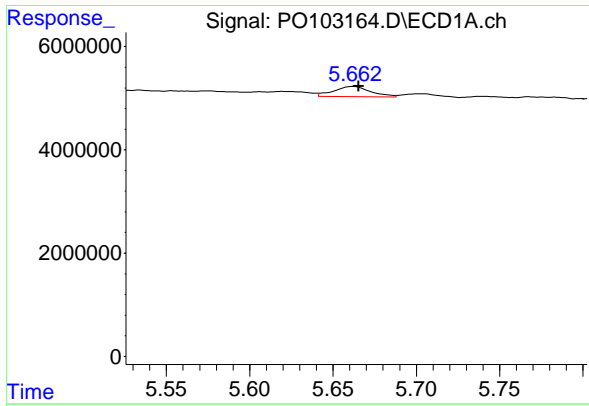
#14 AR-1232-4

R.T.: 5.573 min
 Delta R.T.: -0.003 min
 Response: 1463233
 Conc: 30.50 ng/ml



#14 AR-1232-4

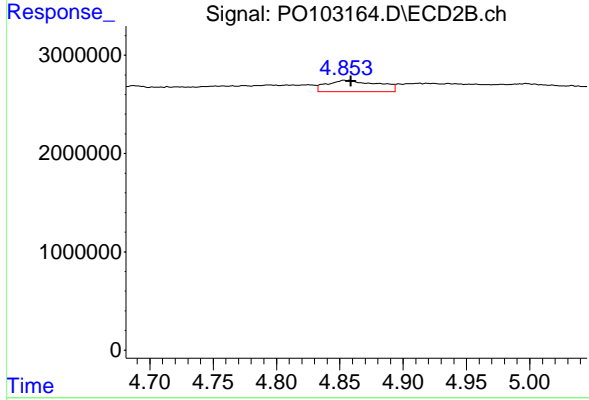
R.T.: 4.687 min
 Delta R.T.: -0.005 min
 Response: 1286461
 Conc: 47.51 ng/ml



#15 AR-1232-5

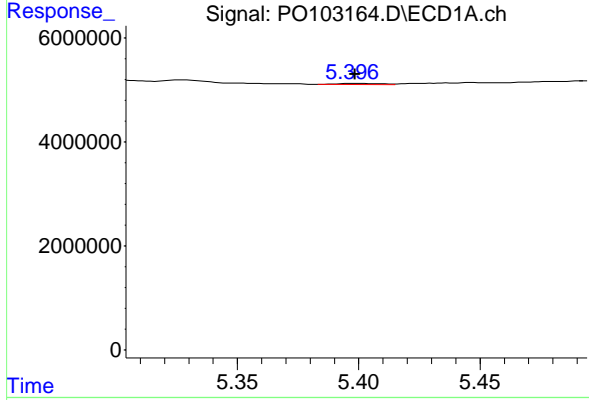
R.T.: 5.662 min
 Delta R.T.: -0.003 min
 Response: 3095171
 Conc: 76.95 ng/ml

Instrument :
 ECD_O
 ClientSampleId :
 KZZ0660-1-2



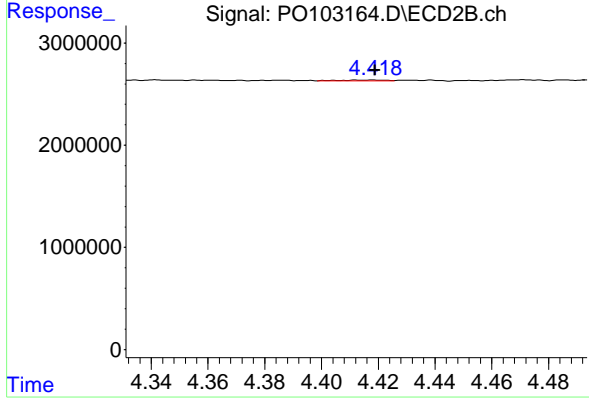
#15 AR-1232-5

R.T.: 4.854 min
 Delta R.T.: -0.005 min
 Response: 3303541
 Conc: 113.54 ng/ml



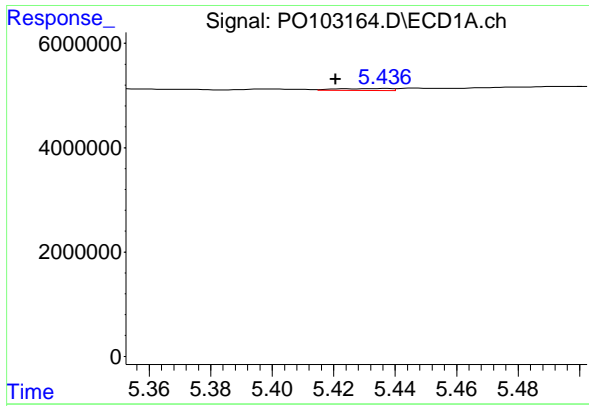
#16 AR-1242-1

R.T.: 5.397 min
 Delta R.T.: -0.002 min
 Response: 268080
 Conc: 2.20 ng/ml



#16 AR-1242-1

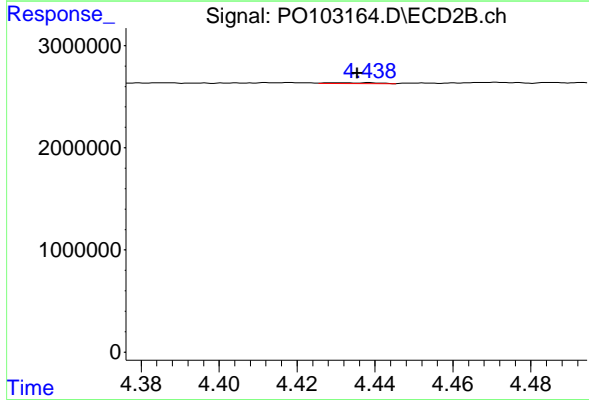
R.T.: 4.419 min
 Delta R.T.: 0.000 min
 Response: 100646
 Conc: 1.52 ng/ml



#17 AR-1242-2

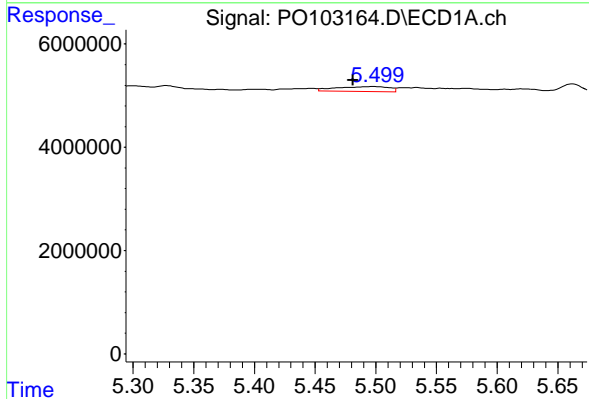
R.T.: 5.437 min
 Delta R.T.: 0.016 min
 Response: 476003
 Conc: 2.66 ng/ml

Instrument :
 ECD_O
 ClientSampleId :
 KZZ0660-1-2



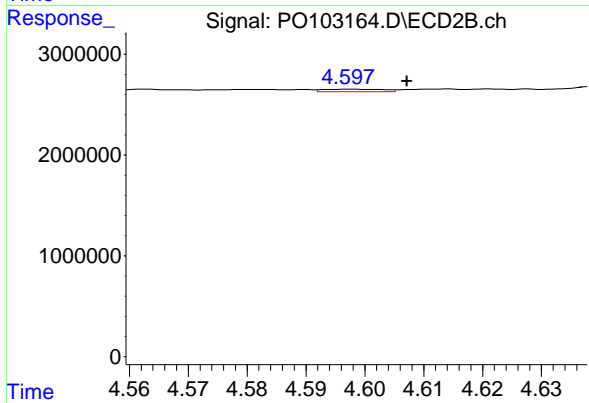
#17 AR-1242-2

R.T.: 4.430 min
 Delta R.T.: -0.005 min
 Response: 76987
 Conc: 0.79 ng/ml



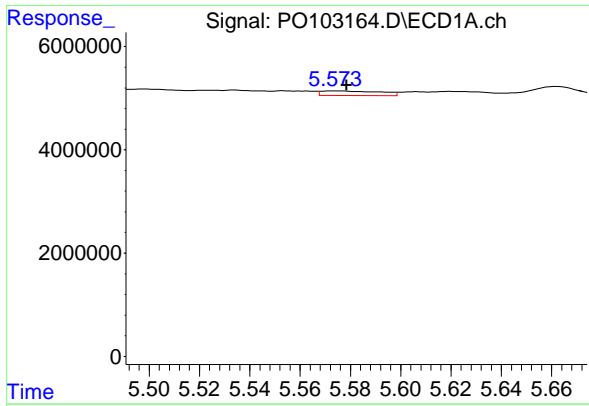
#18 AR-1242-3

R.T.: 5.498 min
 Delta R.T.: 0.017 min
 Response: 2987113
 Conc: 26.42 ng/ml



#18 AR-1242-3

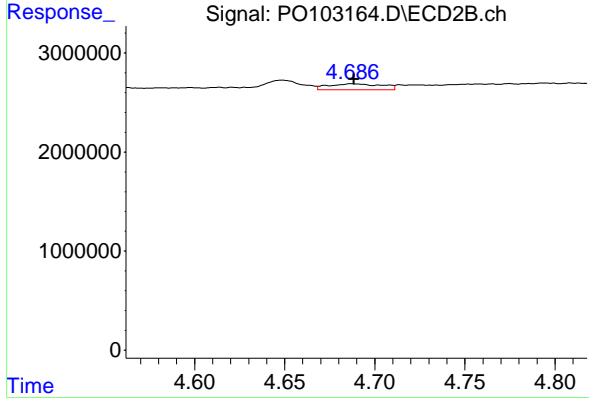
R.T.: 4.597 min
 Delta R.T.: -0.010 min
 Response: 171755
 Conc: 3.20 ng/ml



#19 AR-1242-4

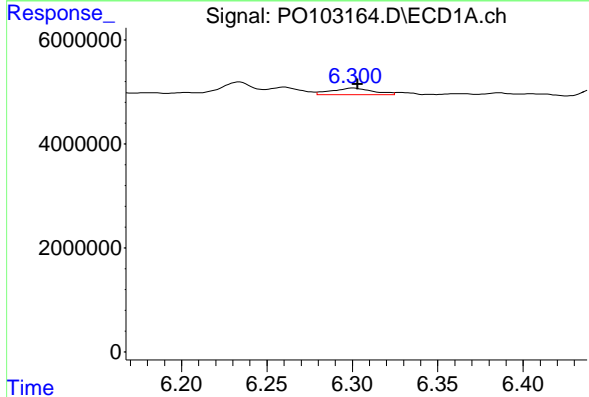
R.T.: 5.573 min
 Delta R.T.: -0.005 min
 Response: 1463233
 Conc: 16.39 ng/ml

Instrument :
 ECD_O
 ClientSampleId :
 KZZ0660-1-2



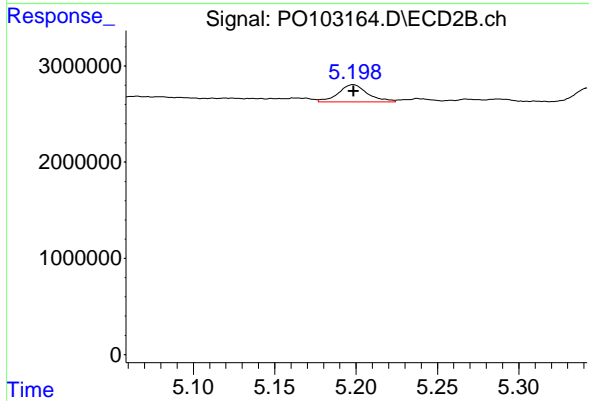
#19 AR-1242-4

R.T.: 4.687 min
 Delta R.T.: -0.001 min
 Response: 1286461
 Conc: 23.33 ng/ml



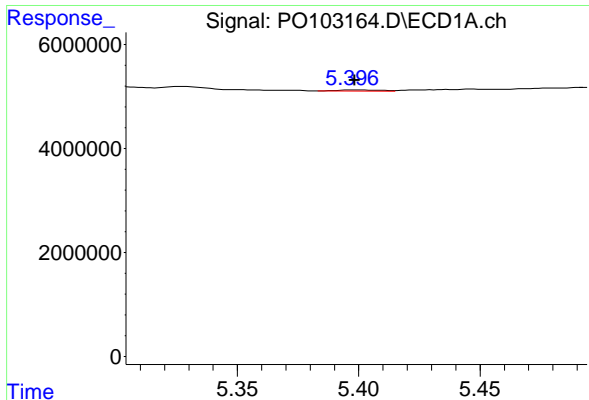
#20 AR-1242-5

R.T.: 6.301 min
 Delta R.T.: -0.002 min
 Response: 2097253
 Conc: 25.09 ng/ml



#20 AR-1242-5

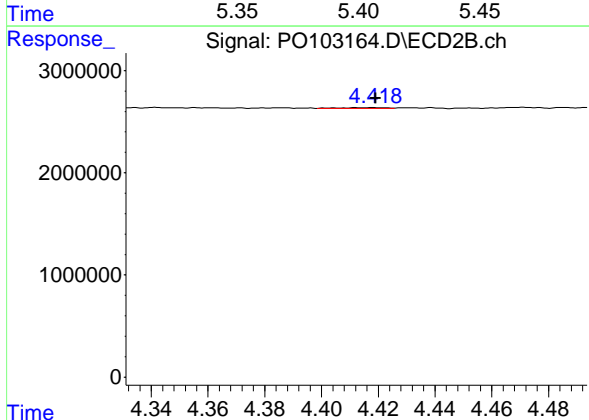
R.T.: 5.198 min
 Delta R.T.: 0.000 min
 Response: 2205086
 Conc: 34.84 ng/ml



#21 AR-1248-1

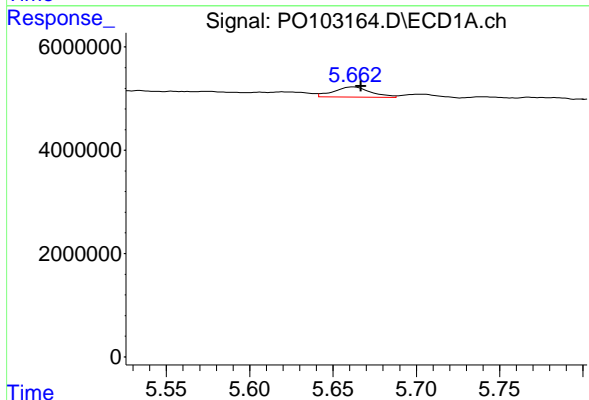
R.T.: 5.397 min
 Delta R.T.: -0.001 min
 Response: 268080
 Conc: 3.00 ng/ml

Instrument :
 ECD_O
 ClientSampleId :
 KZZ0660-1-2



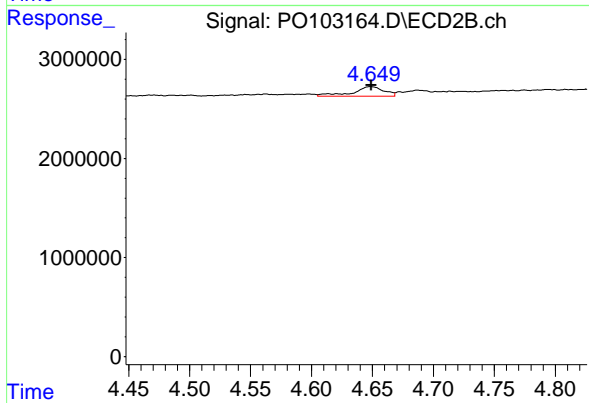
#21 AR-1248-1

R.T.: 4.419 min
 Delta R.T.: 0.000 min
 Response: 100646
 Conc: 2.03 ng/ml



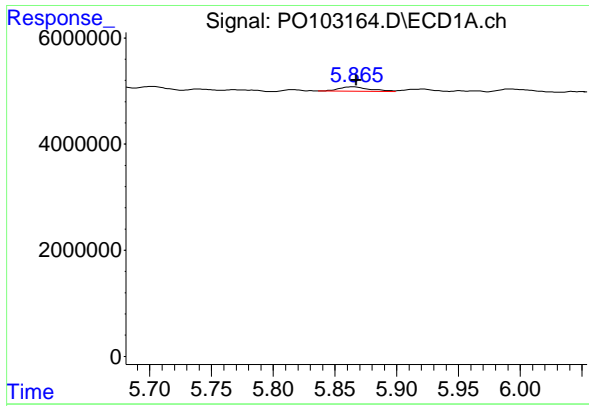
#22 AR-1248-2

R.T.: 5.662 min
 Delta R.T.: -0.005 min
 Response: 3095171
 Conc: 22.44 ng/ml



#22 AR-1248-2

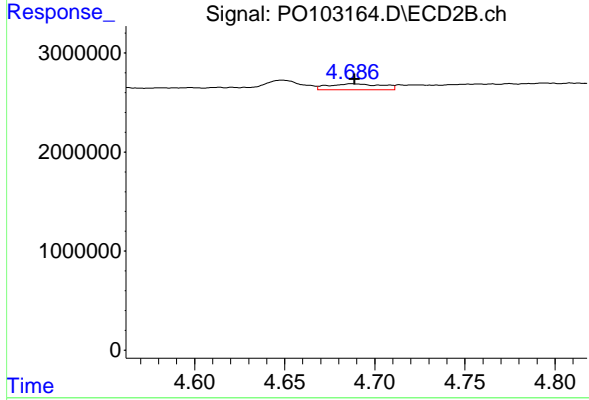
R.T.: 4.649 min
 Delta R.T.: 0.000 min
 Response: 1794967
 Conc: 23.85 ng/ml



#23 AR-1248-3

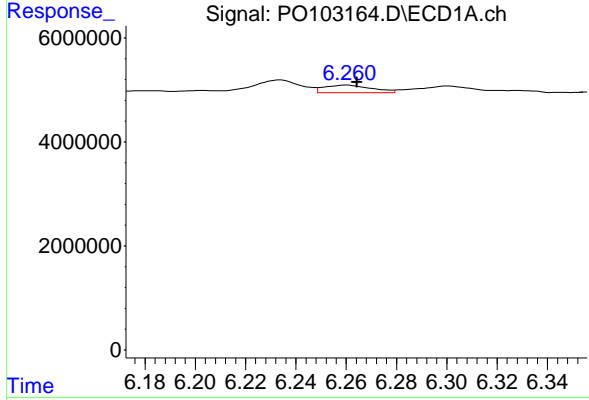
R.T.: 5.865 min
 Delta R.T.: -0.003 min
 Response: 1465568
 Conc: 10.33 ng/ml

Instrument :
 ECD_O
 ClientSampleId :
 KZZ0660-1-2



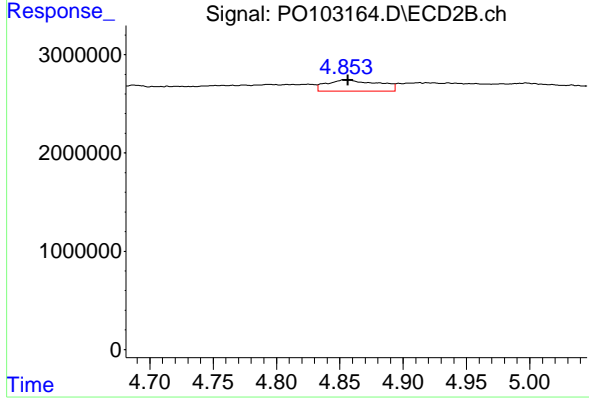
#23 AR-1248-3

R.T.: 4.687 min
 Delta R.T.: -0.002 min
 Response: 1286461
 Conc: 16.56 ng/ml



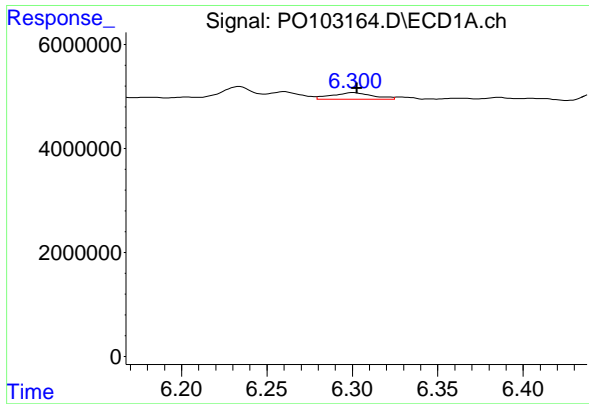
#24 AR-1248-4

R.T.: 6.261 min
 Delta R.T.: -0.004 min
 Response: 1902273
 Conc: 13.42 ng/ml



#24 AR-1248-4

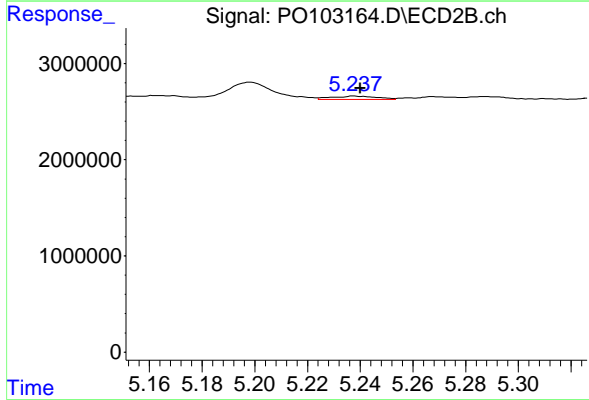
R.T.: 4.854 min
 Delta R.T.: -0.002 min
 Response: 3303541
 Conc: 36.84 ng/ml



#25 AR-1248-5

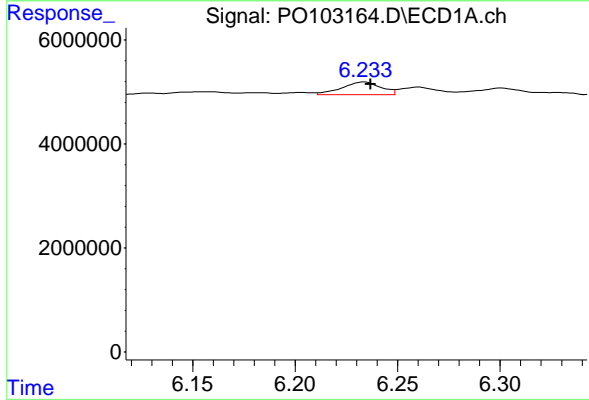
R.T.: 6.301 min
Delta R.T.: -0.002 min
Response: 2097253
Conc: 15.25 ng/ml

Instrument :
ECD_O
ClientSampleId :
KZZ0660-1-2



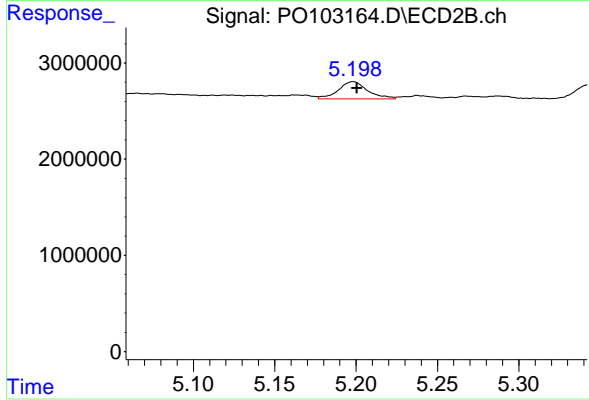
#25 AR-1248-5

R.T.: 5.238 min
Delta R.T.: -0.002 min
Response: 386654
Conc: 4.82 ng/ml



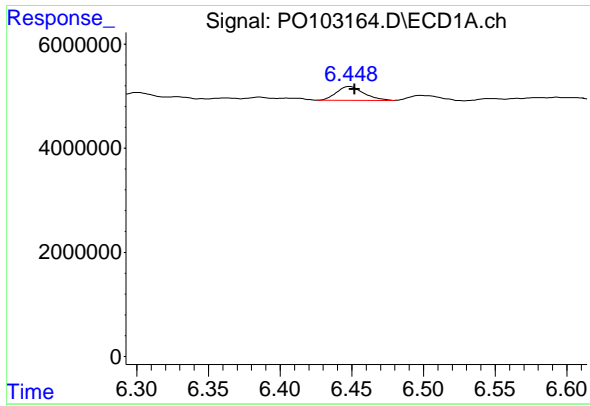
#26 AR-1254-1

R.T.: 6.234 min
Delta R.T.: -0.003 min
Response: 3248066
Conc: 20.46 ng/ml



#26 AR-1254-1

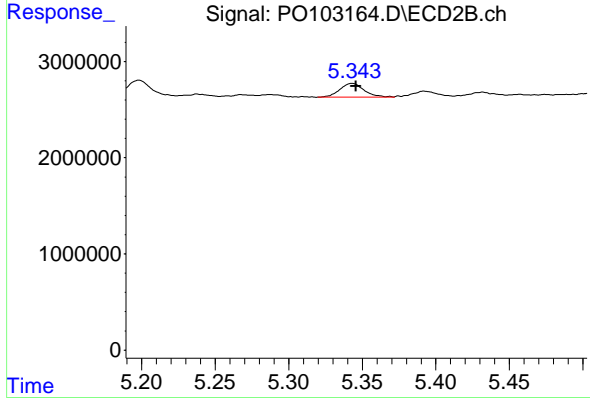
R.T.: 5.198 min
Delta R.T.: -0.002 min
Response: 2205086
Conc: 16.39 ng/ml



#27 AR-1254-2

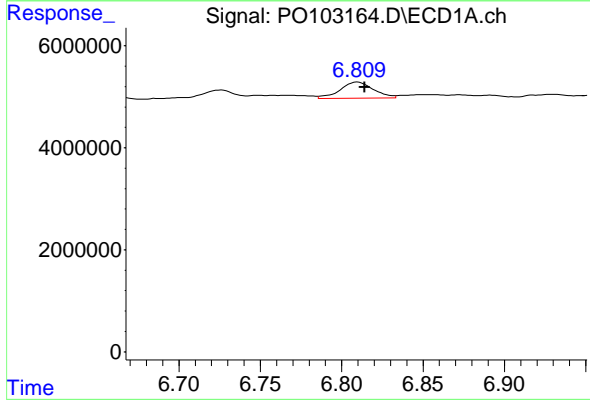
R.T.: 6.448 min
 Delta R.T.: -0.004 min
 Response: 3558927
 Conc: 15.20 ng/ml

Instrument :
 ECD_O
 ClientSampleId :
 KZZ0660-1-2



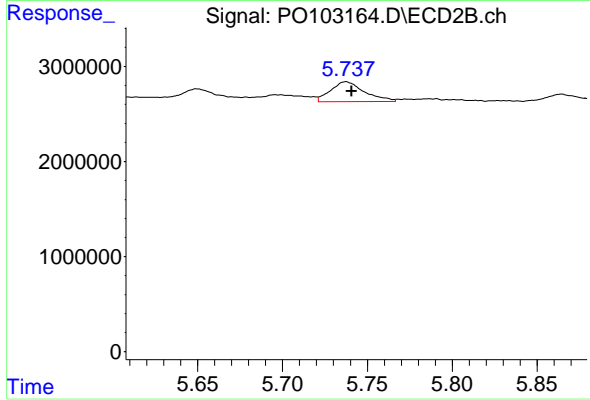
#27 AR-1254-2

R.T.: 5.343 min
 Delta R.T.: -0.002 min
 Response: 1682965
 Conc: 14.24 ng/ml



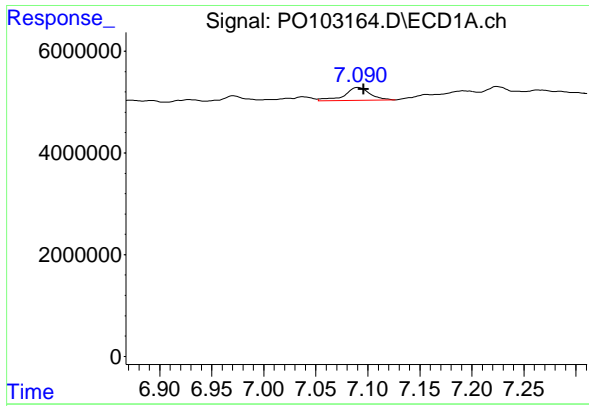
#28 AR-1254-3

R.T.: 6.810 min
 Delta R.T.: -0.004 min
 Response: 4537853
 Conc: 19.58 ng/ml



#28 AR-1254-3

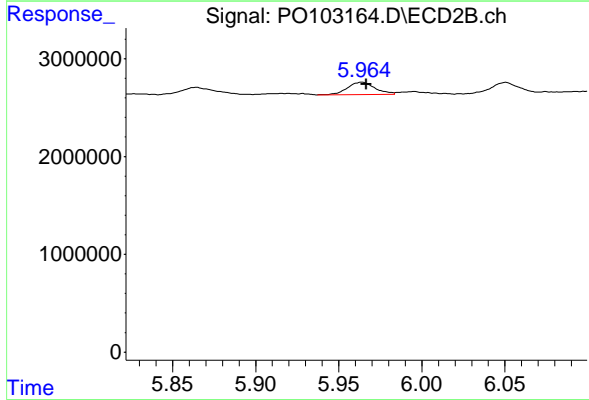
R.T.: 5.737 min
 Delta R.T.: -0.003 min
 Response: 2916906
 Conc: 16.66 ng/ml



#29 AR-1254-4

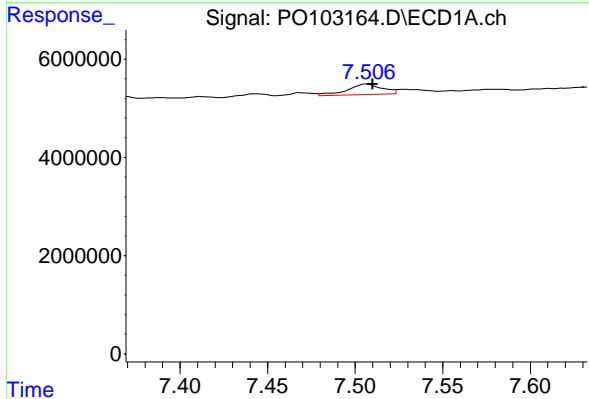
R.T.: 7.091 min
Delta R.T.: -0.005 min
Response: 4369527
Conc: 29.45 ng/ml

Instrument :
ECD_O
ClientSampleId :
KZZ0660-1-2



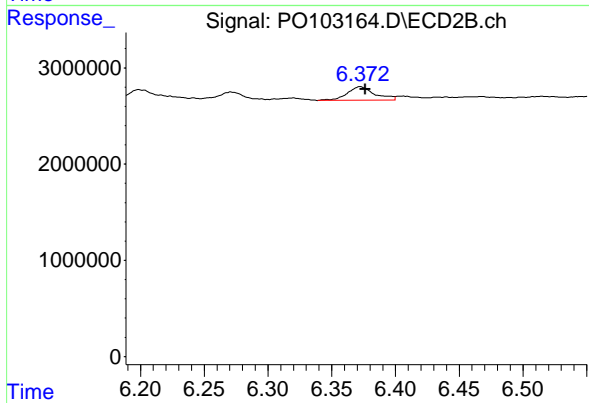
#29 AR-1254-4

R.T.: 5.964 min
Delta R.T.: -0.003 min
Response: 1454269
Conc: 14.34 ng/ml



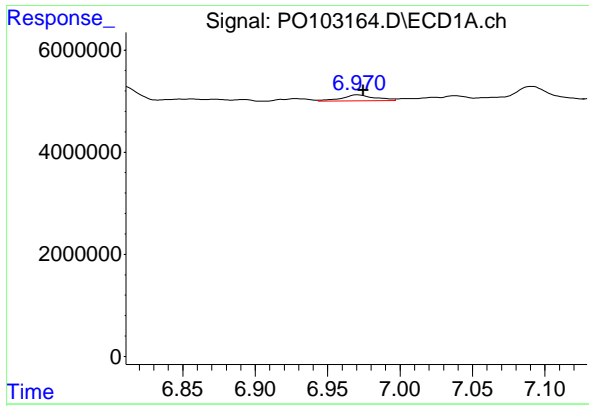
#30 AR-1254-5

R.T.: 7.507 min
Delta R.T.: -0.003 min
Response: 2991216
Conc: 17.99 ng/ml



#30 AR-1254-5

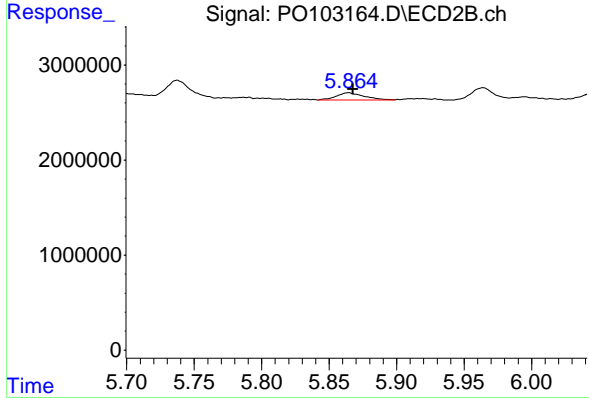
R.T.: 6.372 min
Delta R.T.: -0.004 min
Response: 2077963
Conc: 13.79 ng/ml



#31 AR-1260-1

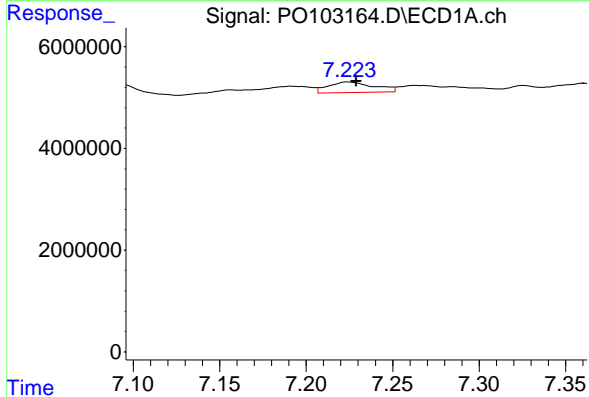
R.T.: 6.971 min
 Delta R.T.: -0.004 min
 Response: 1800777
 Conc: 10.16 ng/ml

Instrument :
 ECD_O
 ClientSampleId :
 KZZ0660-1-2



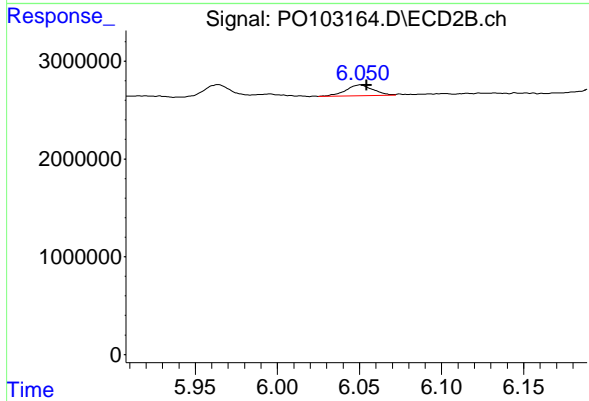
#31 AR-1260-1

R.T.: 5.864 min
 Delta R.T.: -0.004 min
 Response: 1137448
 Conc: 8.95 ng/ml



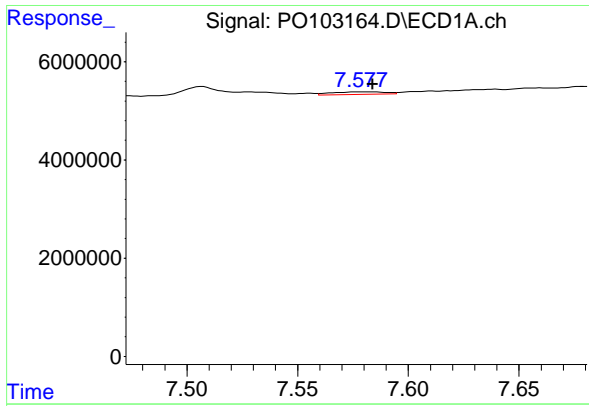
#32 AR-1260-2

R.T.: 7.224 min
 Delta R.T.: -0.005 min
 Response: 3790094
 Conc: 19.11 ng/ml



#32 AR-1260-2

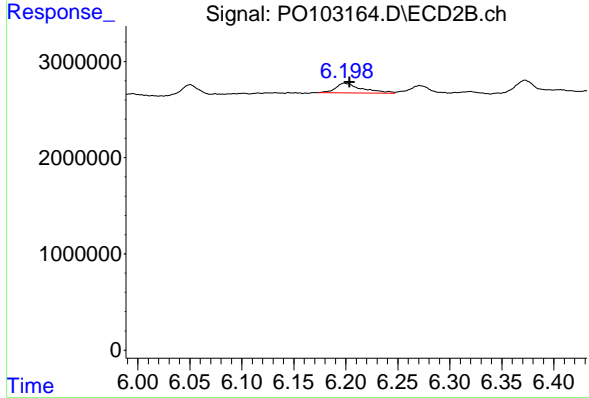
R.T.: 6.050 min
 Delta R.T.: -0.004 min
 Response: 1267177
 Conc: 8.25 ng/ml



#33 AR-1260-3

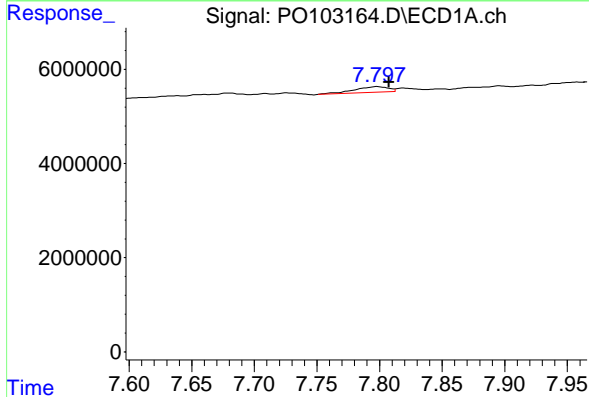
R.T.: 7.579 min
 Delta R.T.: -0.005 min
 Response: 888712
 Conc: 6.28 ng/ml

Instrument :
 ECD_O
 ClientSampleId :
 KZZ0660-1-2



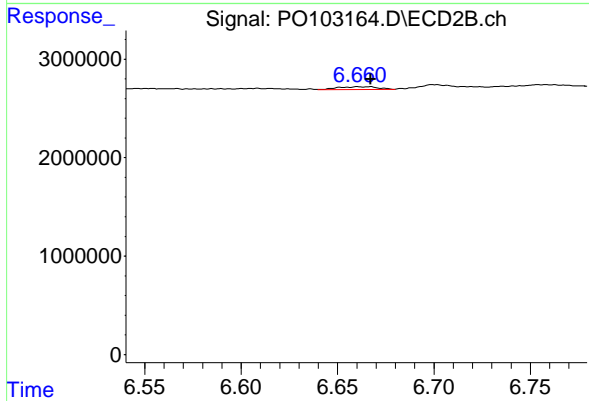
#33 AR-1260-3

R.T.: 6.199 min
 Delta R.T.: -0.005 min
 Response: 1769168
 Conc: 12.70 ng/ml



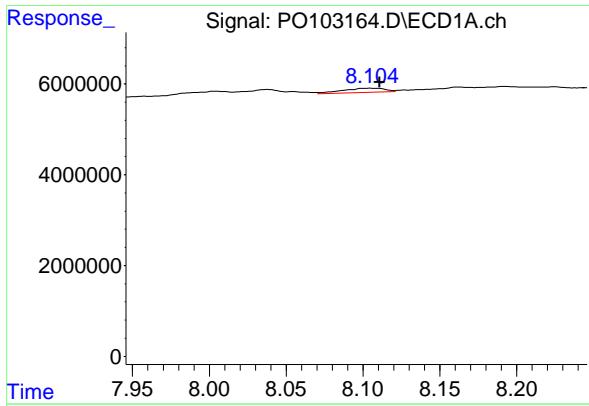
#34 AR-1260-4

R.T.: 7.798 min
 Delta R.T.: -0.010 min
 Response: 2291601
 Conc: 14.74 ng/ml



#34 AR-1260-4

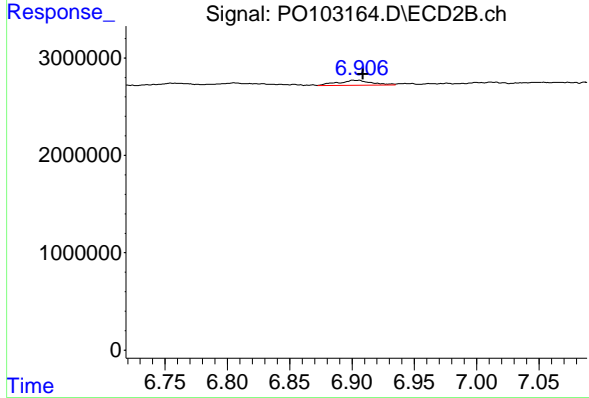
R.T.: 6.661 min
 Delta R.T.: -0.006 min
 Response: 385332
 Conc: 3.50 ng/ml



#35 AR-1260-5

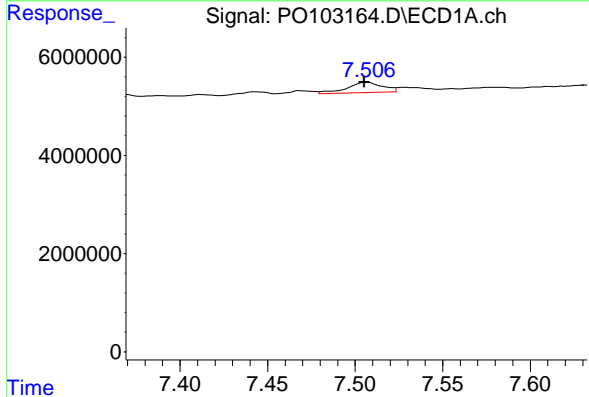
R.T.: 8.105 min
 Delta R.T.: -0.006 min
 Response: 1761219
 Conc: 5.90 ng/ml

Instrument :
 ECD_O
 ClientSampleId :
 KZZ0660-1-2



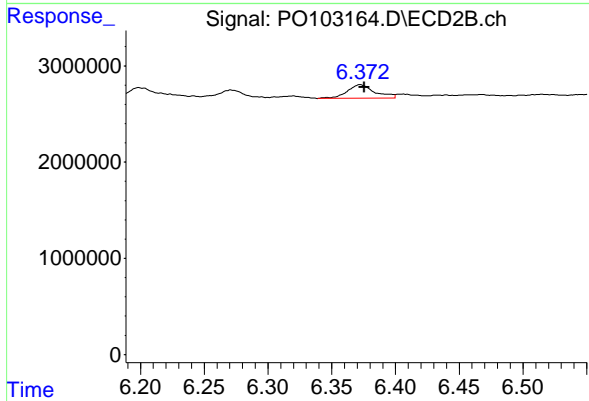
#35 AR-1260-5

R.T.: 6.905 min
 Delta R.T.: -0.004 min
 Response: 948165
 Conc: 3.70 ng/ml



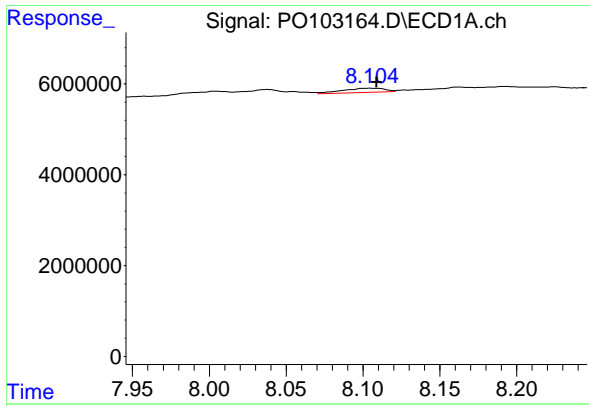
#36 AR-1262-1

R.T.: 7.507 min
 Delta R.T.: 0.001 min
 Response: 2991216
 Conc: 21.93 ng/ml



#36 AR-1262-1

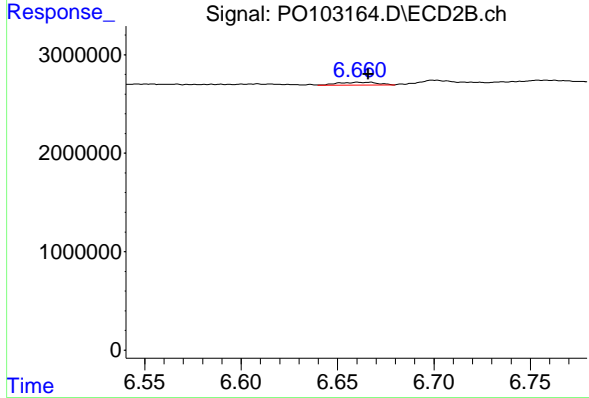
R.T.: 6.372 min
 Delta R.T.: -0.003 min
 Response: 2077963
 Conc: 25.65 ng/ml



#37 AR-1262-2

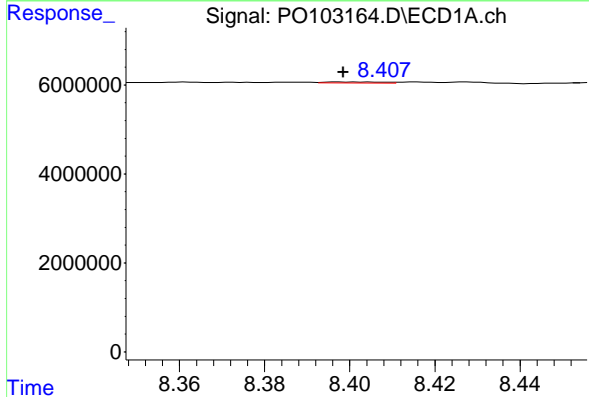
R.T.: 8.105 min
 Delta R.T.: -0.004 min
 Response: 1761219
 Conc: 5.26 ng/ml

Instrument :
 ECD_O
 ClientSampleId :
 KZZ0660-1-2



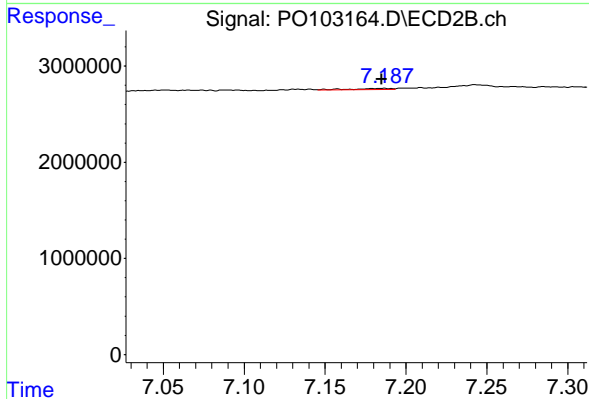
#37 AR-1262-2

R.T.: 6.661 min
 Delta R.T.: -0.005 min
 Response: 385332
 Conc: 2.69 ng/ml



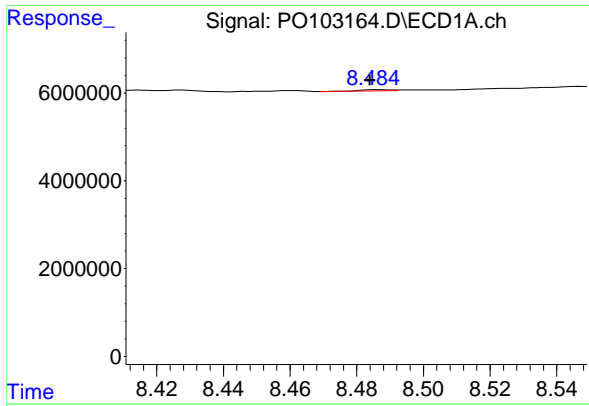
#38 AR-1262-3

R.T.: 8.403 min
 Delta R.T.: 0.005 min
 Response: 205775
 Conc: 0.93 ng/ml



#38 AR-1262-3

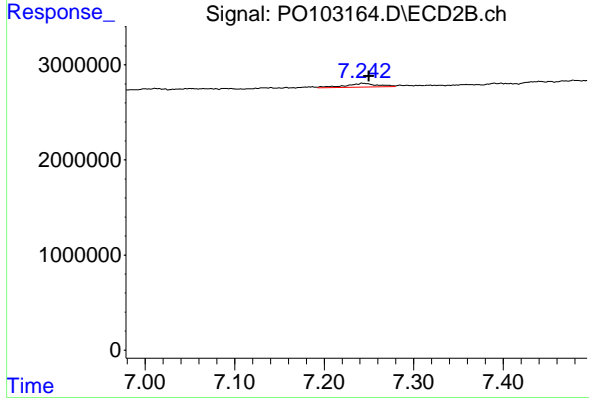
R.T.: 7.186 min
 Delta R.T.: 0.001 min
 Response: 204815
 Conc: 1.69 ng/ml



#39 AR-1262-4

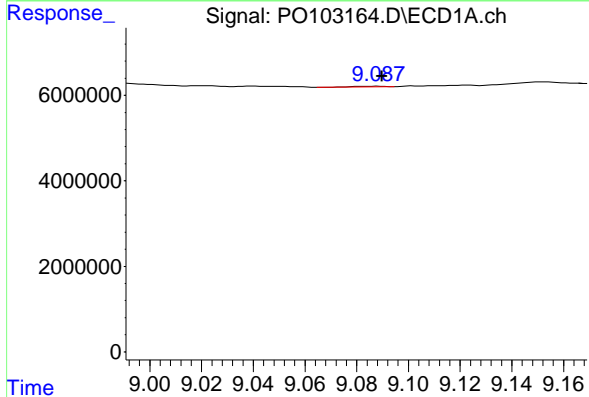
R.T.: 8.486 min
 Delta R.T.: 0.002 min
 Response: 160191
 Conc: 0.92 ng/ml

Instrument :
 ECD_O
 ClientSampleId :
 KZZ0660-1-2



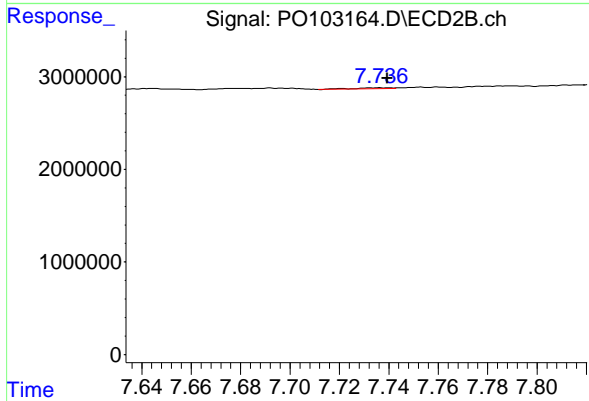
#39 AR-1262-4

R.T.: 7.243 min
 Delta R.T.: -0.007 min
 Response: 1001526
 Conc: 4.87 ng/ml



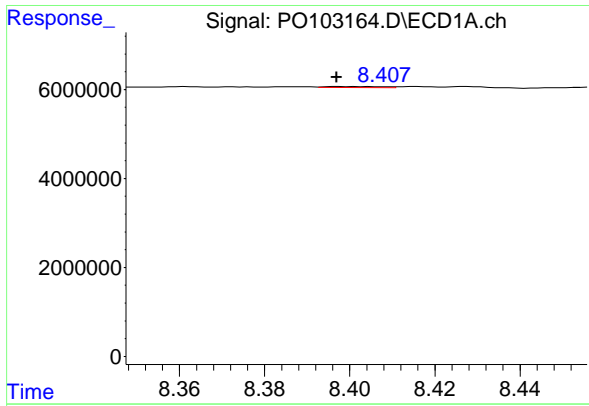
#40 AR-1262-5

R.T.: 9.088 min
 Delta R.T.: -0.002 min
 Response: 95789
 Conc: 0.82 ng/ml



#40 AR-1262-5

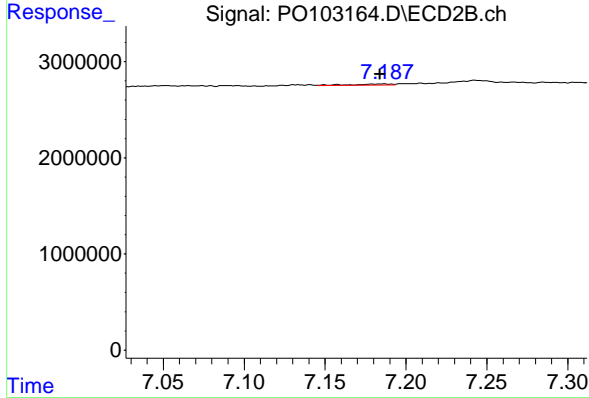
R.T.: 7.736 min
 Delta R.T.: -0.003 min
 Response: 102765
 Conc: 1.17 ng/ml



#41 AR-1268-1

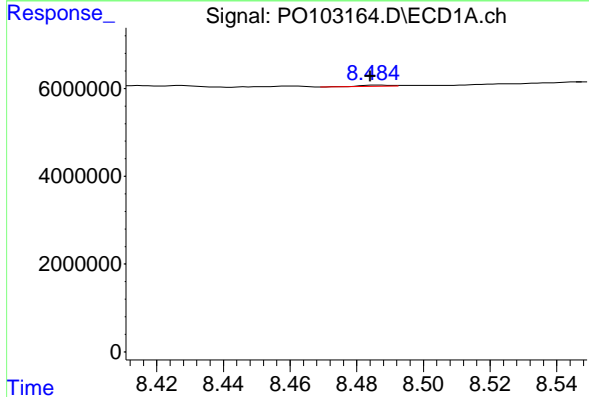
R.T.: 8.403 min
 Delta R.T.: 0.006 min
 Response: 205775
 Conc: 0.52 ng/ml

Instrument :
 ECD_O
 ClientSampleId :
 KZZ0660-1-2



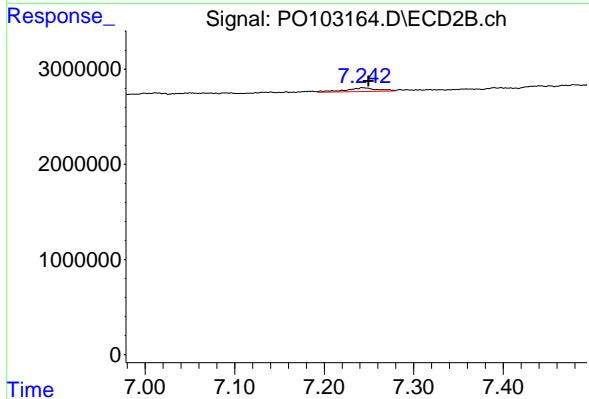
#41 AR-1268-1

R.T.: 7.186 min
 Delta R.T.: 0.002 min
 Response: 204815
 Conc: 0.58 ng/ml



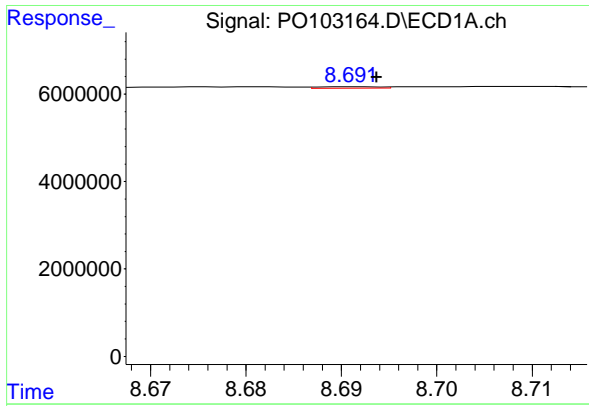
#42 AR-1268-2

R.T.: 8.486 min
 Delta R.T.: 0.002 min
 Response: 160191
 Conc: 0.43 ng/ml



#42 AR-1268-2

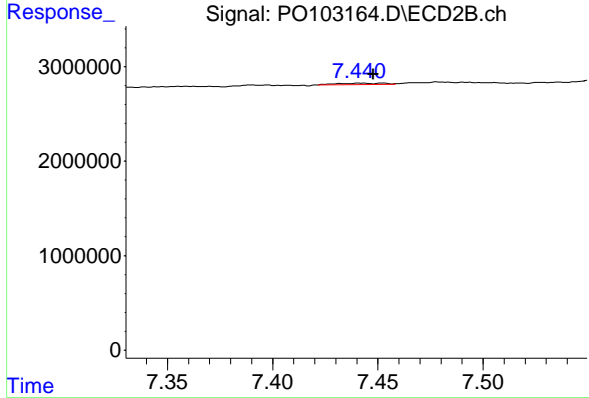
R.T.: 7.243 min
 Delta R.T.: -0.007 min
 Response: 1001526
 Conc: 3.15 ng/ml



#43 AR-1268-3

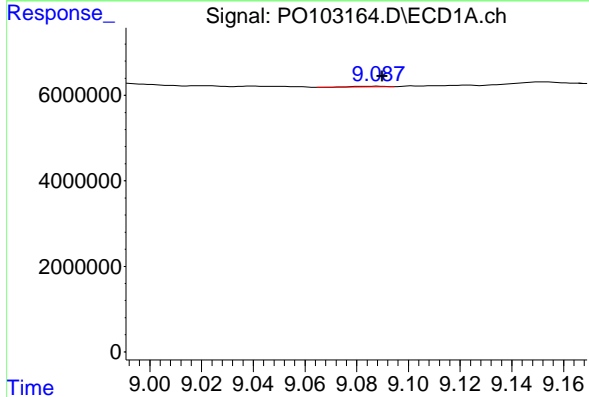
R.T.: 8.692 min
 Delta R.T.: -0.002 min
 Response: 160027
 Conc: 0.48 ng/ml

Instrument :
 ECD_O
 ClientSampleId :
 KZZ0660-1-2



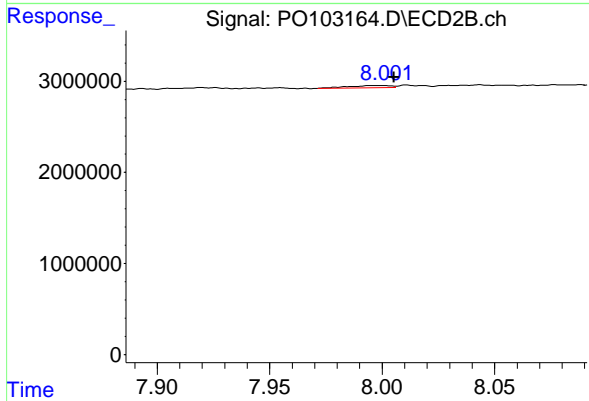
#43 AR-1268-3

R.T.: 7.442 min
 Delta R.T.: -0.006 min
 Response: 210881
 Conc: 0.78 ng/ml



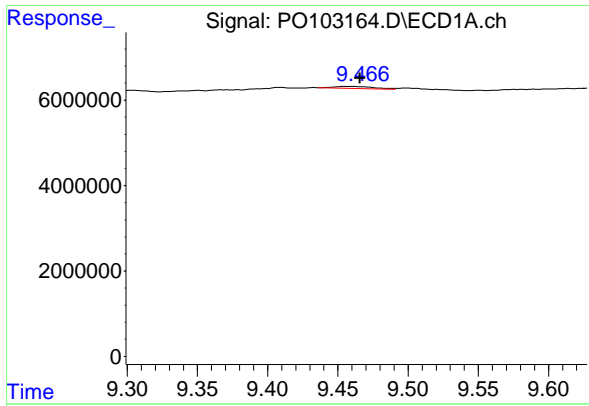
#44 AR-1268-4

R.T.: 9.088 min
 Delta R.T.: -0.002 min
 Response: 95789
 Conc: 0.73 ng/ml



#44 AR-1268-4

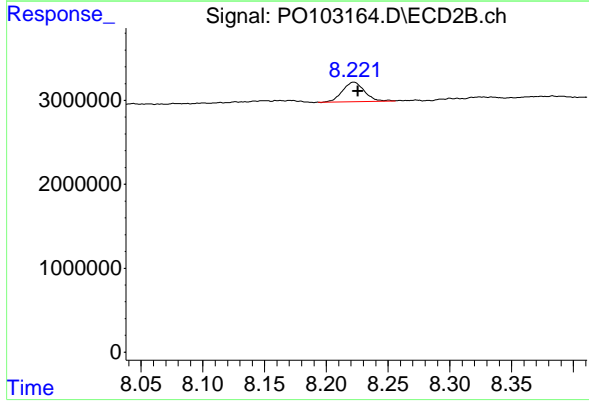
R.T.: 8.000 min
 Delta R.T.: -0.005 min
 Response: 299594
 Conc: 0.41 ng/ml



#45 AR-1268-5

R.T.: 9.456 min
 Delta R.T.: -0.010 min
 Response: 912873
 Conc: 0.87 ng/ml

Instrument :
 ECD_O
 ClientSampleId :
 KZZ0660-1-2



#45 AR-1268-5

R.T.: 8.222 min
 Delta R.T.: -0.003 min
 Response: 2873385
 Conc: 9.27 ng/ml