

Data Path : Z:\pestpcbsrv\HPCHEM1\ECD_0\Data\P0042425\
 Data File : PO110685.D
 Signal(s) : Signal #1: ECD1A.ch Signal #2: ECD2B.ch
 Acq On : 24 Apr 2025 15:09
 Operator : YP/AJ
 Sample : Q1860-16
 Misc :
 ALS Vial : 14 Sample Multiplier: 1

Instrument :
 ECD_0
 ClientSampleId :

Integration File signal 1: autoint1.e
 Integration File signal 2: autoint2.e
 Quant Time: Apr 25 00:26:52 2025
 Quant Method : Z:\pestpcbsrv\HPCHEM1\ECD_0\methods\P0041025.M
 Quant Title : GC EXTRACTABLES
 QLast Update : Fri Apr 11 02:12:41 2025
 Response via : Initial Calibration
 Integrator: ChemStation

Volume Inj. : 2 µl
 Signal #1 Phase : ZB-MR1 Signal #2 Phase: ZB-MR2
 Signal #1 Info : 30Mx0.32mmx 0.50µ Signal #2 Info : 30M x 0.32mm x 0.25µm

Compound	RT#1	RT#2	Resp#1	Resp#2	ng/ml	ng/ml
System Monitoring Compounds						
1) SA Tetrachlo...	3.687	3.684	160.1E6	90248316	18.299	18.087
2) SA Decachlor...	8.722	8.675	200.1E6	52261578	25.340	27.149
Target Compounds						
3) L1 AR-1016-1	4.777	4.763	2236.0E6	1191.6E6	6814.094	6789.114
4) L1 AR-1016-2	4.796	4.782	4851.4E6	2708.3E6	10663.631	10769.976
5) L1 AR-1016-3	4.852	4.958	947.9E6	1271.5E6	2938.990	9368.888 #
6) L1 AR-1016-4	4.973	4.999	2315.8E6	1648.8E6	9294.226	14416.519 #
7) L1 AR-1016-5	5.229	5.212	3758.7E6	1800.2E6	13972.191	12076.052
8) L2 AR-1221-1	3.889	3.884	44228904	23955056	374.711	358.757
9) L2 AR-1221-2	3.985	3.979	44528975	23203971	504.043	463.188
10) L2 AR-1221-3	4.061	4.054	172.6E6	90618725	656.116	607.485
11) L3 AR-1232-1	4.061	4.054	172.6E6	90618725	842.872	787.825
12) L3 AR-1232-2	4.551	4.782	1470.9E6	2708.3E6	13784.496	24427.862 #
13) L3 AR-1232-3	4.796	4.958	4851.4E6	1271.5E6	24283.541	22227.120
14) L3 AR-1232-4	4.973	5.041	2315.8E6	1661.2E6	22637.607	30790.353 #
15) L3 AR-1232-5	5.015	5.212	2995.3E6	1800.2E6	43471.705	31507.754 #
16) L4 AR-1242-1	4.777	4.763	2236.0E6	1191.6E6	8056.692	7970.125
17) L4 AR-1242-2	4.796	4.782	4851.4E6	2708.3E6	12575.773	12693.247
18) L4 AR-1242-3	4.852	4.958	947.9E6	1271.5E6	3407.256	11000.474 #
19) L4 AR-1242-4	4.973	5.041	2315.8E6	1661.2E6	10956.239	13832.250 #
20) L4 AR-1242-5	5.625	5.563	4271.6E6	3415.9E6	18868.204	23541.965
21) L5 AR-1248-1	4.777	4.763	2236.0E6	1191.6E6	10505.731	10349.462
22) L5 AR-1248-2	5.015	4.999	2995.3E6	1648.8E6	10121.832	10122.545
23) L5 AR-1248-3	5.229	5.041	3758.7E6	1661.2E6	10159.660	9446.605
24) L5 AR-1248-4	5.584	5.212	6327.9E6	1800.2E6	12168.222	8838.547 #
25) L5 AR-1248-5	5.625	5.604	4271.6E6	2278.3E6	11562.916	11541.835
26) L6 AR-1254-1	5.584	5.563	6327.9E6	3415.9E6	11340.455	11329.603
27) L6 AR-1254-2	5.732	5.711	3283.7E6	1685.5E6	6760.698	6368.075
28) L6 AR-1254-3	6.138	6.113	6268.9E6	3269.4E6	8004.035	8104.209
29) L6 AR-1254-4	6.367	6.341	3224.4E6	1582.8E6	6612.656	6890.301
30) L6 AR-1254-5	6.787	6.758	5295.1E6	2542.2E6	7554.700	7650.475
31) L7 AR-1260-1	6.270	6.244	3175.1E6	1610.6E6	6720.597	6548.192
32) L7 AR-1260-2	6.458	6.431	2619.1E6	1221.6E6	4466.229	4187.299
33) L7 AR-1260-3	6.825	6.583	1187.6E6	1181.8E6	2409.627	4362.883 #
34) L7 AR-1260-4	7.085	7.055	948.1E6	391.6E6	2233.967	1951.904
35) L7 AR-1260-5	7.327	7.296	3063.6E6	1665.4E6	2935.989	3629.353
36) L8 AR-1262-1	6.825	6.795	1187.6E6	478.3E6	1693.099	1452.338
37) L8 AR-1262-2	7.327	7.296	3063.6E6	1665.4E6	2536.665	3275.314 #
38) L8 AR-1262-3	7.612	7.579	904.8E6	224.5E6	1777.244	1159.656 #
39) L8 AR-1262-4	7.674	7.641	1912.0E6	673.2E6	2133.237	1939.764
40) L8 AR-1262-5	8.173	8.135	543.2E6	134.9E6	1348.011	1082.796
41) L9 AR-1268-1	7.612	7.579	904.8E6	224.5E6	644.367	409.946 #

Data Path : Z:\pestpcbsrv\HPCHEM1\ECD_0\Data\P0042425\
 Data File : P0110685.D
 Signal(s) : Signal #1: ECD1A.ch Signal #2: ECD2B.ch
 Acq On : 24 Apr 2025 15:09
 Operator : YP/AJ
 Sample : Q1860-16
 Misc :
 ALS Vial : 14 Sample Multiplier: 1

Instrument :
 ECD_0
 ClientSampleId :

Integration File signal 1: autoint1.e
 Integration File signal 2: autoint2.e
 Quant Time: Apr 25 00:26:52 2025
 Quant Method : Z:\pestpcbsrv\HPCHEM1\ECD_0\methods\P0041025.M
 Quant Title : GC EXTRACTABLES
 QLast Update : Fri Apr 11 02:12:41 2025
 Response via : Initial Calibration
 Integrator: ChemStation

Volume Inj. : 2 µl
 Signal #1 Phase : ZB-MR1 Signal #2 Phase: ZB-MR2
 Signal #1 Info : 30Mx0.32mmx 0.50µ Signal #2 Info : 30M x 0.32mm x 0.25µm

	Compound	RT#1	RT#2	Resp#1	Resp#2	ng/ml	ng/ml
42)	L9 AR-1268-2	7.674	7.641	1912.0E6	673.2E6	1494.021	1353.197
43)	L9 AR-1268-3	7.884	7.848	64980173	31454223	62.304	84.652 #
44)	L9 AR-1268-4	8.173	8.135	543.2E6	134.9E6	1223.084	955.877
45)	L9 AR-1268-5	8.468	8.425	492.1E6	107.0E6	152.849	135.983

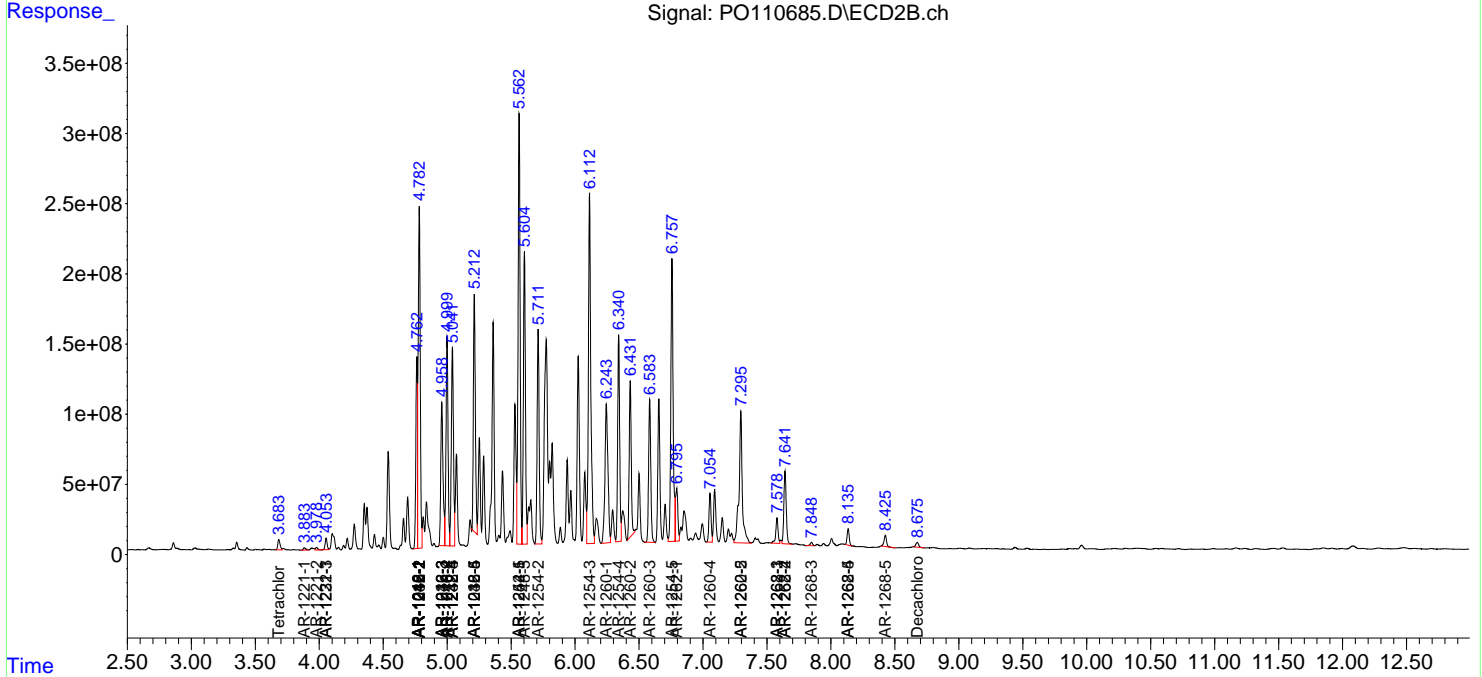
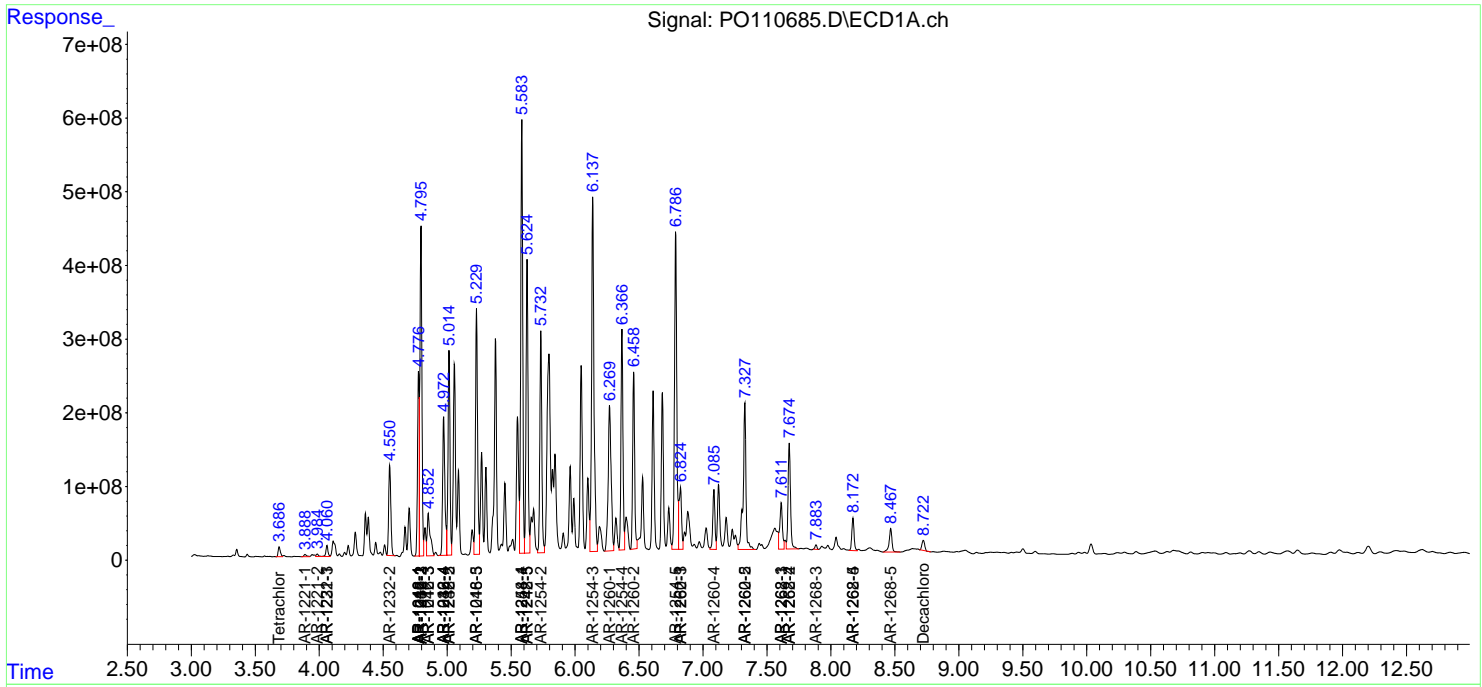
(f)=RT Delta > 1/2 Window (#)=Amounts differ by > 25% (m)=manual int.

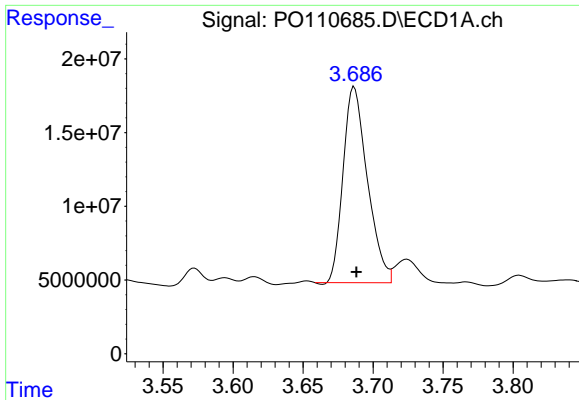
Data Path : Z:\pestpcbsrv\HPCHEM1\ECD_O\Data\PO042425\
 Data File : PO110685.D
 Signal(s) : Signal #1: ECD1A.ch Signal #2: ECD2B.ch
 Acq On : 24 Apr 2025 15:09
 Operator : YP/AJ
 Sample : Q1860-16
 Misc :
 ALS Vial : 14 Sample Multiplier: 1

Instrument :
 ECD_O
 ClientSampleId :

Integration File signal 1: autoint1.e
 Integration File signal 2: autoint2.e
 Quant Time: Apr 25 00:26:52 2025
 Quant Method : Z:\pestpcbsrv\HPCHEM1\ECD_O\methods\PO041025.M
 Quant Title : GC EXTRACTABLES
 QLast Update : Fri Apr 11 02:12:41 2025
 Response via : Initial Calibration
 Integrator: ChemStation

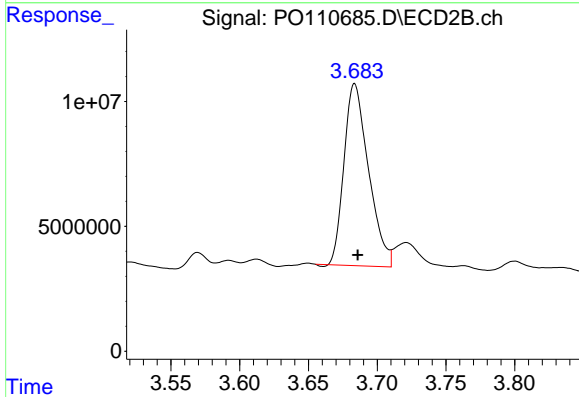
Volume Inj. : 2 µl
 Signal #1 Phase : ZB-MR1 Signal #2 Phase: ZB-MR2
 Signal #1 Info : 30Mx0.32mmx 0.50µ Signal #2 Info : 30M x 0.32mm x 0.25µm



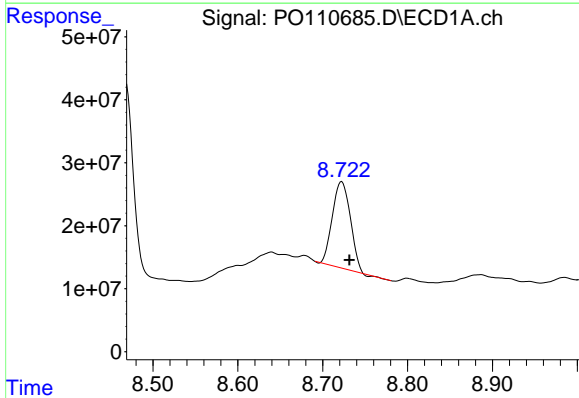


#1 Tetrachloro-m-xylene
 R.T.: 3.687 min
 Delta R.T.: -0.001 min
 Response: 160099981
 Conc: 18.30 ng/ml

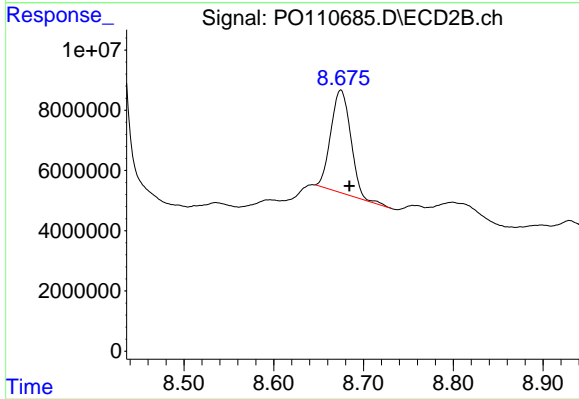
Instrument :
 ECD_O
 ClientSampleId :



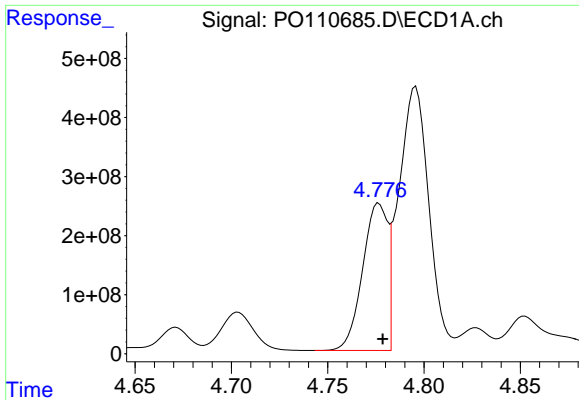
#1 Tetrachloro-m-xylene
 R.T.: 3.684 min
 Delta R.T.: -0.002 min
 Response: 90248316
 Conc: 18.09 ng/ml



#2 Decachlorobiphenyl
 R.T.: 8.722 min
 Delta R.T.: -0.009 min
 Response: 200058370
 Conc: 25.34 ng/ml



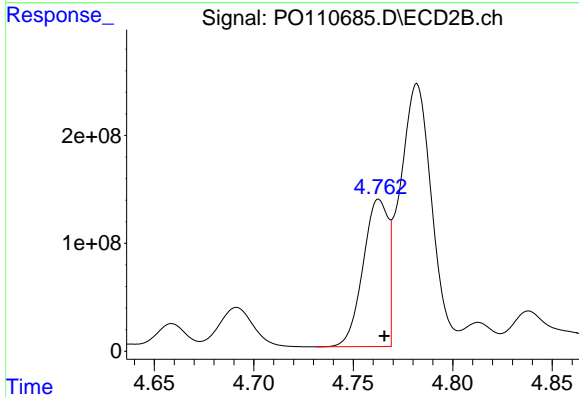
#2 Decachlorobiphenyl
 R.T.: 8.675 min
 Delta R.T.: -0.010 min
 Response: 52261578
 Conc: 27.15 ng/ml



#3 AR-1016-1

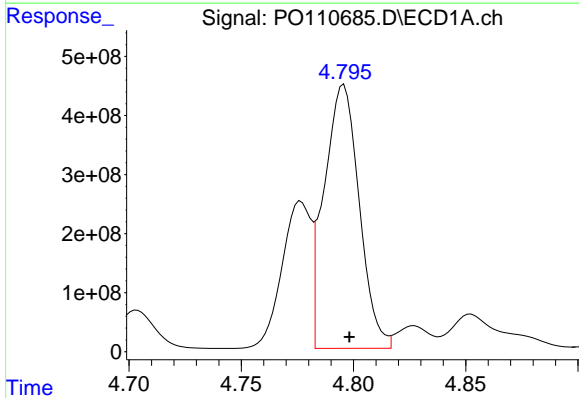
R.T.: 4.777 min
 Delta R.T.: -0.002 min
 Response: 2236000853
 Conc: 6814.09 ng/ml

Instrument :
 ECD_O
 ClientSampleId :



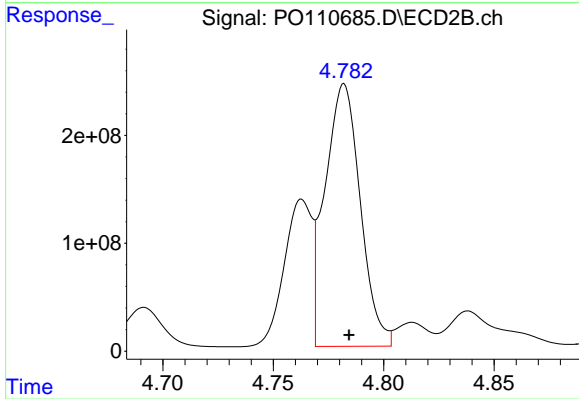
#3 AR-1016-1

R.T.: 4.763 min
 Delta R.T.: -0.003 min
 Response: 1191553930
 Conc: 6789.11 ng/ml



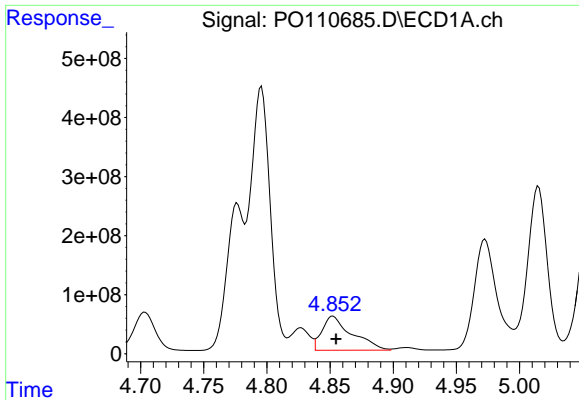
#4 AR-1016-2

R.T.: 4.796 min
 Delta R.T.: -0.002 min
 Response: 4851400357
 Conc: 10663.63 ng/ml



#4 AR-1016-2

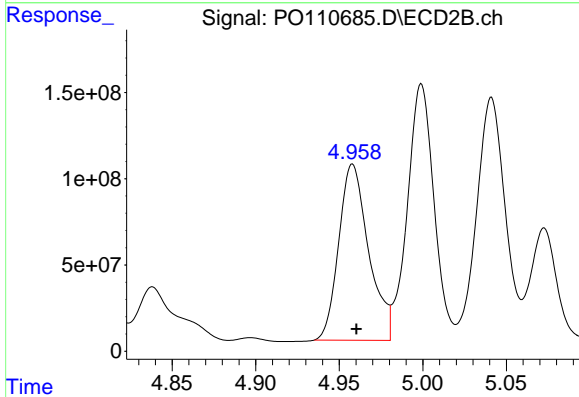
R.T.: 4.782 min
 Delta R.T.: -0.002 min
 Response: 2708271499
 Conc: 10769.98 ng/ml



#5 AR-1016-3

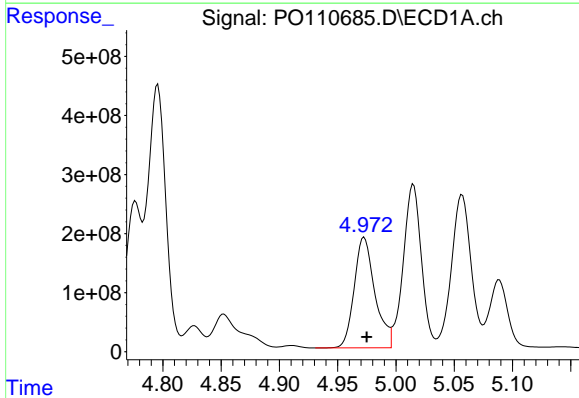
R.T.: 4.852 min
 Delta R.T.: -0.002 min
 Response: 947905185
 Conc: 2938.99 ng/ml

Instrument :
 ECD_O
 ClientSampleId :



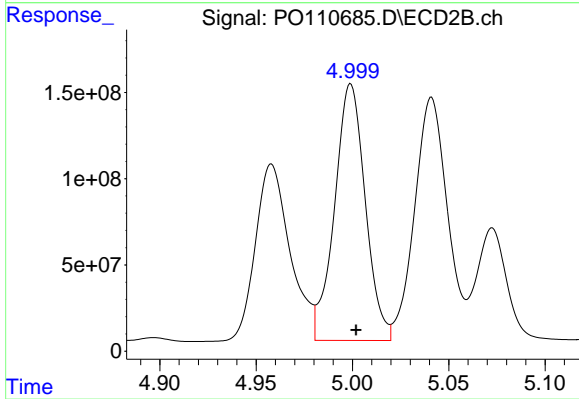
#5 AR-1016-3

R.T.: 4.958 min
 Delta R.T.: -0.002 min
 Response: 1271460379
 Conc: 9368.89 ng/ml



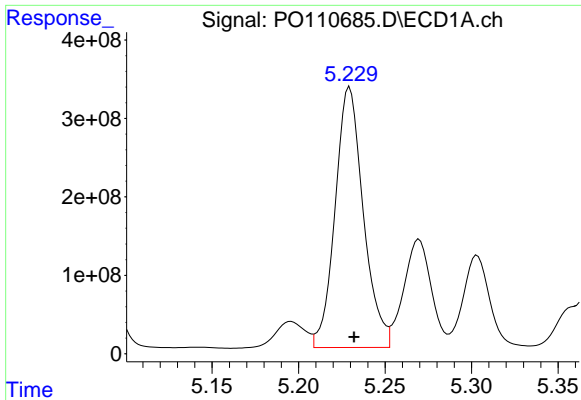
#6 AR-1016-4

R.T.: 4.973 min
 Delta R.T.: -0.002 min
 Response: 2315791109
 Conc: 9294.23 ng/ml



#6 AR-1016-4

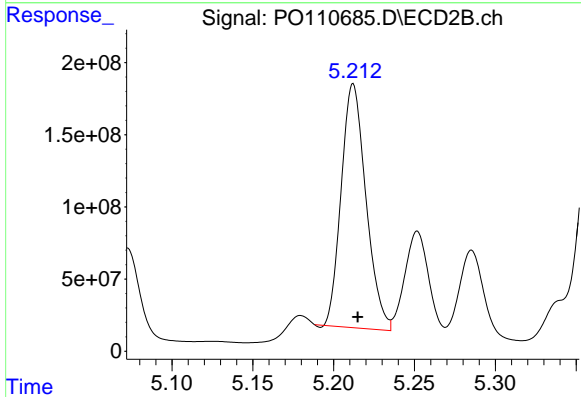
R.T.: 4.999 min
 Delta R.T.: -0.003 min
 Response: 1648786486
 Conc: 14416.52 ng/ml



#7 AR-1016-5

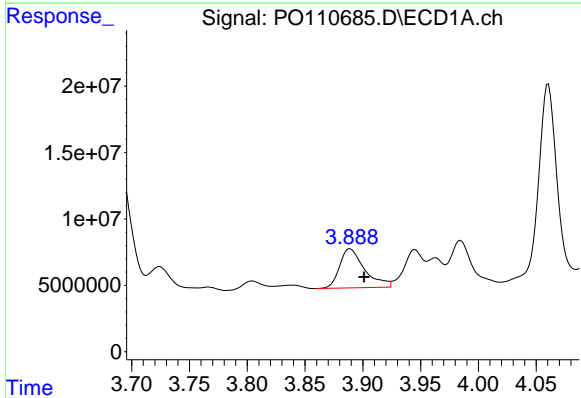
R.T.: 5.229 min
 Delta R.T.: -0.003 min
 Response: 3758682155
 Conc: 13972.19 ng/ml

Instrument :
 ECD_O
 ClientSampleId :



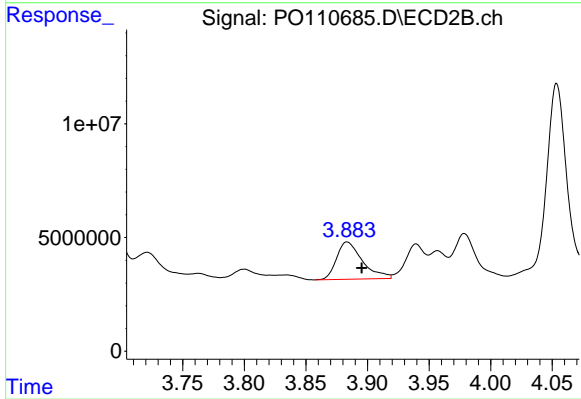
#7 AR-1016-5

R.T.: 5.212 min
 Delta R.T.: -0.003 min
 Response: 1800223807
 Conc: 12076.05 ng/ml



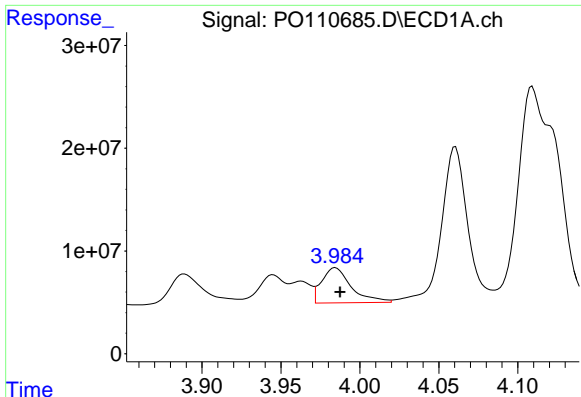
#8 AR-1221-1

R.T.: 3.889 min
 Delta R.T.: -0.012 min
 Response: 44228904
 Conc: 374.71 ng/ml



#8 AR-1221-1

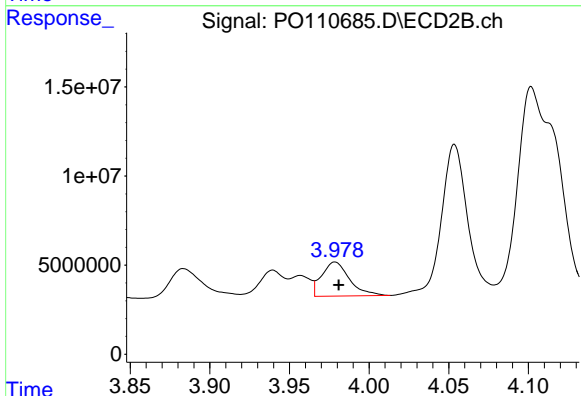
R.T.: 3.884 min
 Delta R.T.: -0.012 min
 Response: 23955056
 Conc: 358.76 ng/ml



#9 AR-1221-2

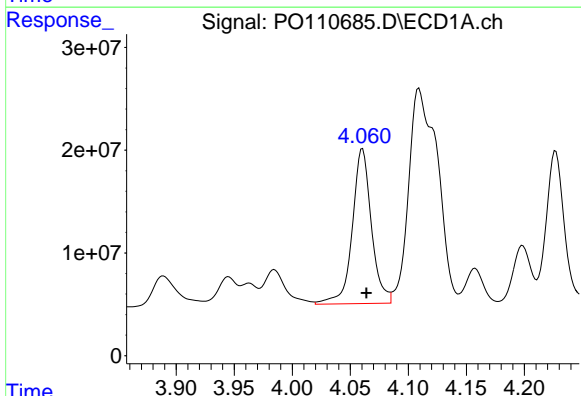
R.T.: 3.985 min
 Delta R.T.: -0.003 min
 Response: 44528975
 Conc: 504.04 ng/ml

Instrument :
 ECD_O
 ClientSampleId :



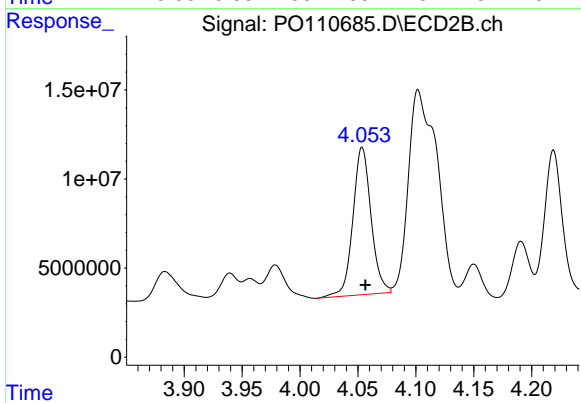
#9 AR-1221-2

R.T.: 3.979 min
 Delta R.T.: -0.002 min
 Response: 23203971
 Conc: 463.19 ng/ml



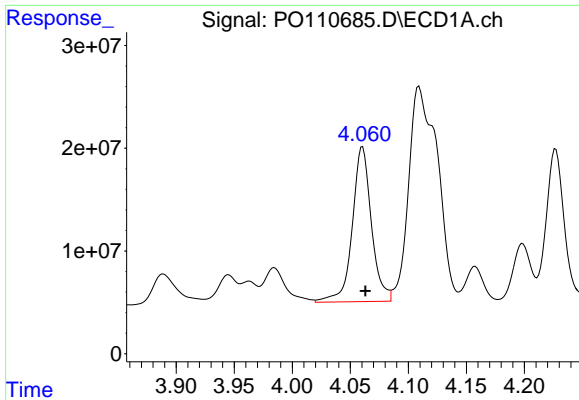
#10 AR-1221-3

R.T.: 4.061 min
 Delta R.T.: -0.003 min
 Response: 172640067
 Conc: 656.12 ng/ml



#10 AR-1221-3

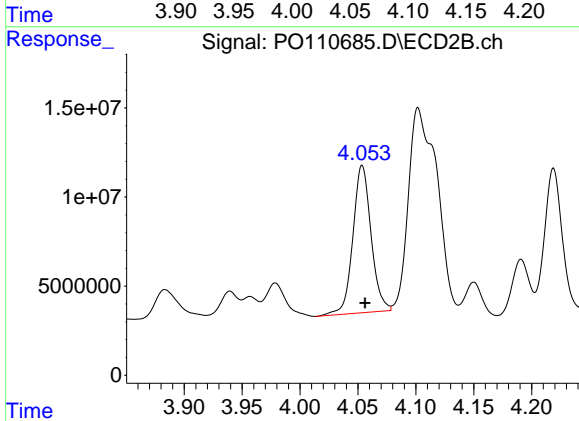
R.T.: 4.054 min
 Delta R.T.: -0.003 min
 Response: 90618725
 Conc: 607.48 ng/ml



#11 AR-1232-1

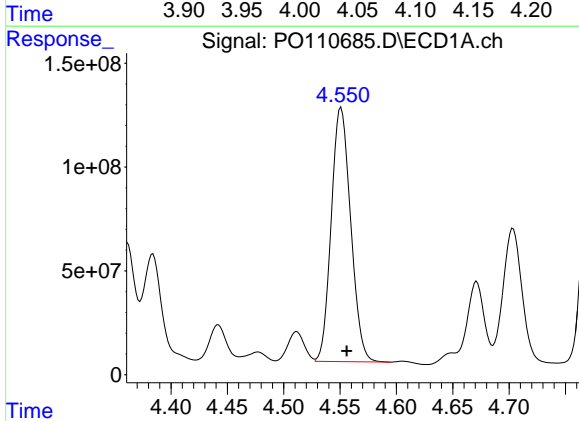
R.T.: 4.061 min
 Delta R.T.: -0.002 min
 Response: 172640067
 Conc: 842.87 ng/ml

Instrument :
 ECD_O
 ClientSampleId :



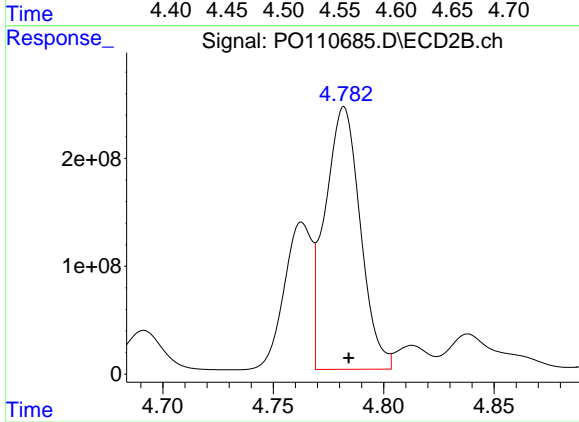
#11 AR-1232-1

R.T.: 4.054 min
 Delta R.T.: -0.003 min
 Response: 90618725
 Conc: 787.82 ng/ml



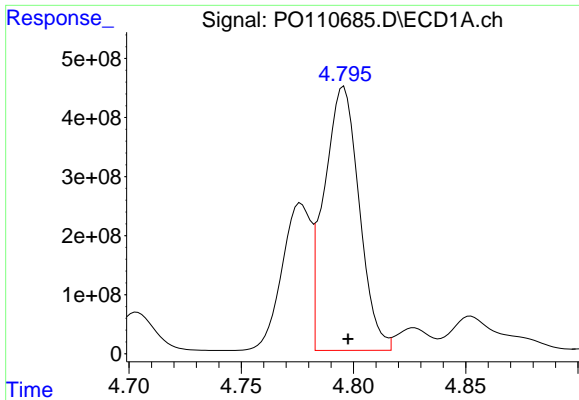
#12 AR-1232-2

R.T.: 4.551 min
 Delta R.T.: -0.005 min
 Response: 1470923855
 Conc: 13784.50 ng/ml



#12 AR-1232-2

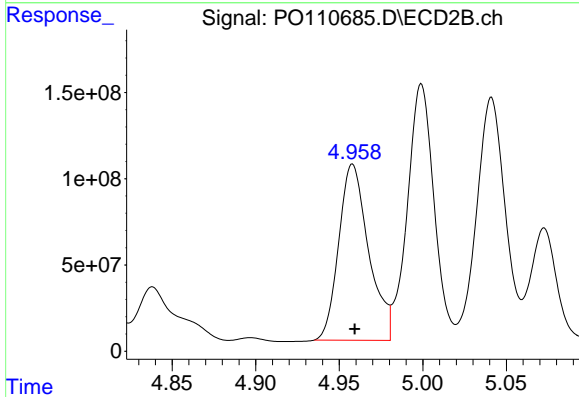
R.T.: 4.782 min
 Delta R.T.: -0.002 min
 Response: 2708271499
 Conc: 24427.86 ng/ml



#13 AR-1232-3

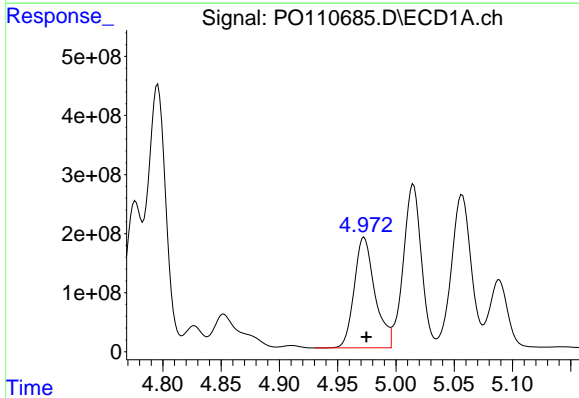
R.T.: 4.796 min
 Delta R.T.: -0.002 min
 Response: 4851400357
 Conc: 24283.54 ng/ml

Instrument :
 ECD_O
 ClientSampleId :



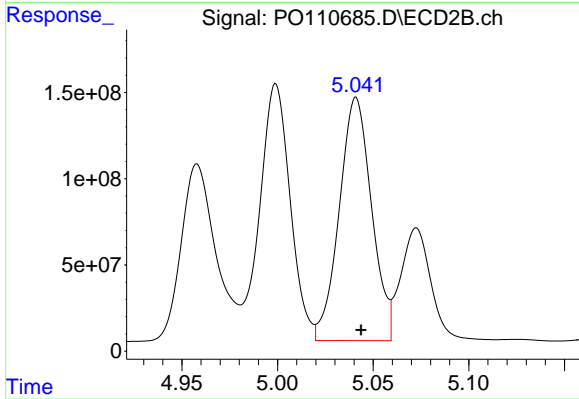
#13 AR-1232-3

R.T.: 4.958 min
 Delta R.T.: -0.001 min
 Response: 1271460379
 Conc: 22227.12 ng/ml



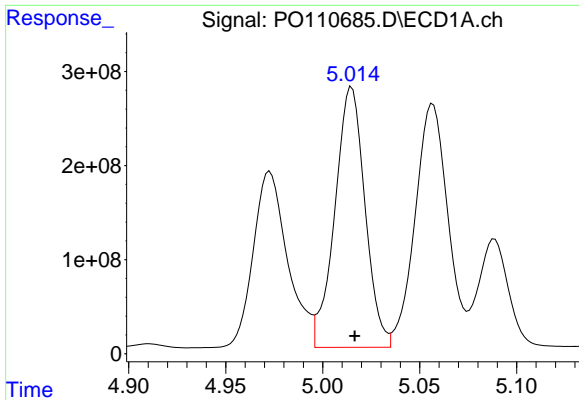
#14 AR-1232-4

R.T.: 4.973 min
 Delta R.T.: -0.002 min
 Response: 2315791109
 Conc: 22637.61 ng/ml



#14 AR-1232-4

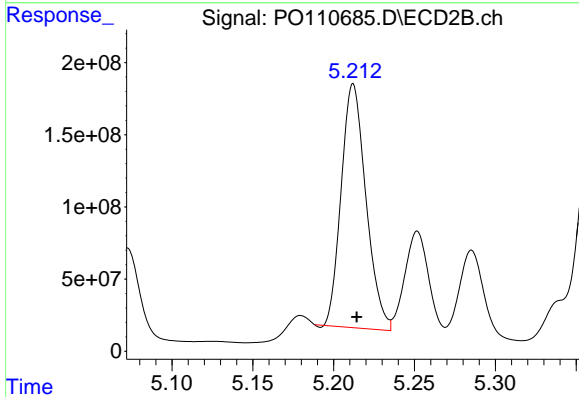
R.T.: 5.041 min
 Delta R.T.: -0.003 min
 Response: 1661243079
 Conc: 30790.35 ng/ml



#15 AR-1232-5

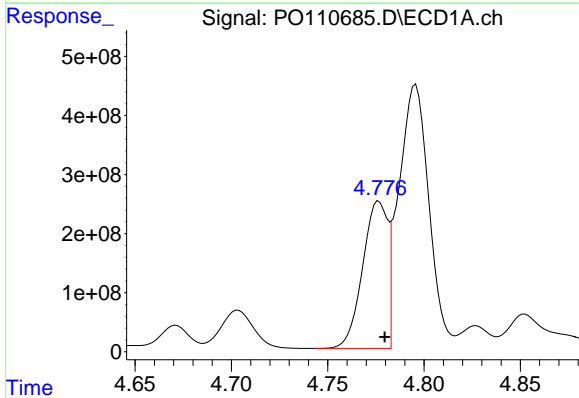
R.T.: 5.015 min
 Delta R.T.: -0.001 min
 Response: 2995303367
 Conc: 43471.71 ng/ml

Instrument :
 ECD_O
 ClientSampleId :



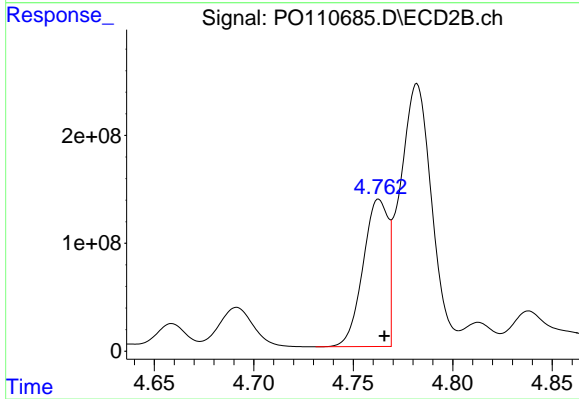
#15 AR-1232-5

R.T.: 5.212 min
 Delta R.T.: -0.002 min
 Response: 1800223807
 Conc: 31507.75 ng/ml



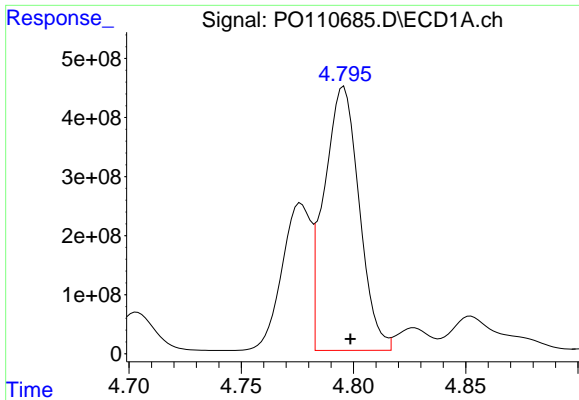
#16 AR-1242-1

R.T.: 4.777 min
 Delta R.T.: -0.003 min
 Response: 2236000853
 Conc: 8056.69 ng/ml



#16 AR-1242-1

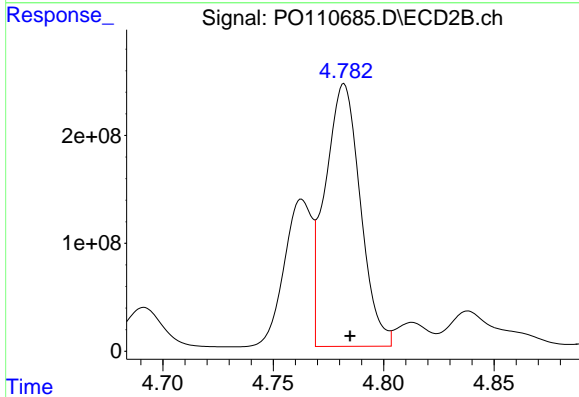
R.T.: 4.763 min
 Delta R.T.: -0.003 min
 Response: 1191553930
 Conc: 7970.13 ng/ml



#17 AR-1242-2

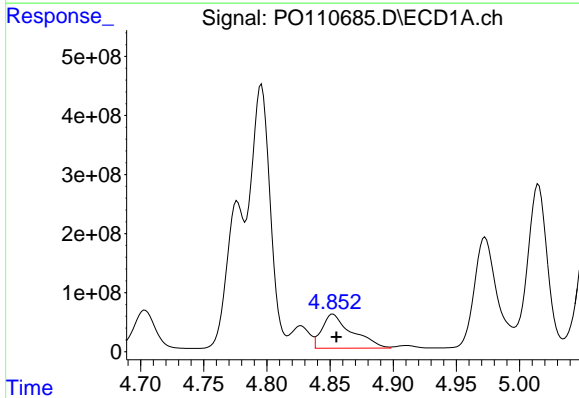
R.T.: 4.796 min
 Delta R.T.: -0.003 min
 Response: 4851400357
 Conc: 12575.77 ng/ml

Instrument :
 ECD_O
 ClientSampleId :



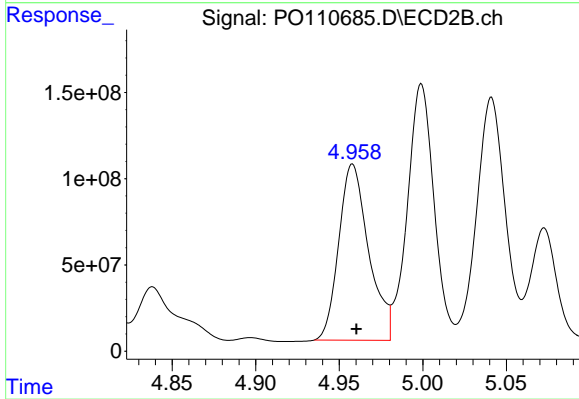
#17 AR-1242-2

R.T.: 4.782 min
 Delta R.T.: -0.003 min
 Response: 2708271499
 Conc: 12693.25 ng/ml



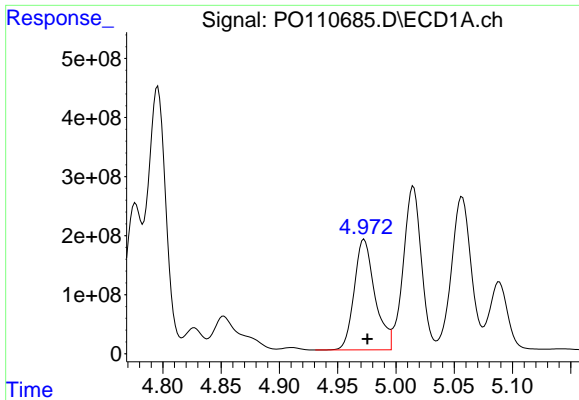
#18 AR-1242-3

R.T.: 4.852 min
 Delta R.T.: -0.003 min
 Response: 947905185
 Conc: 3407.26 ng/ml



#18 AR-1242-3

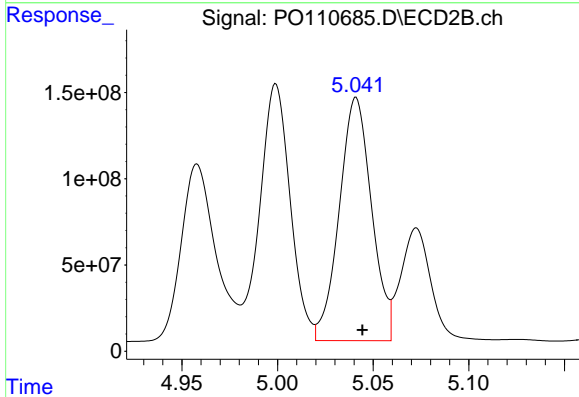
R.T.: 4.958 min
 Delta R.T.: -0.002 min
 Response: 1271460379
 Conc: 11000.47 ng/ml



#19 AR-1242-4

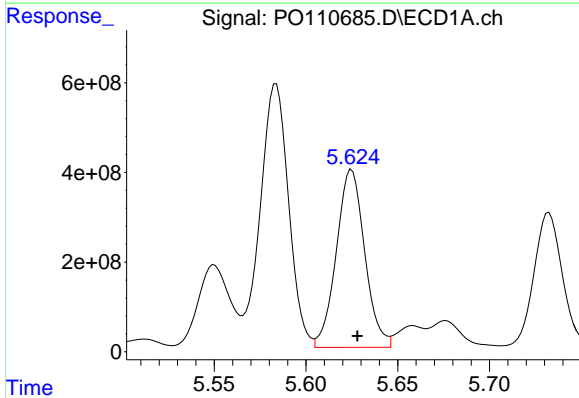
R.T.: 4.973 min
 Delta R.T.: -0.003 min
 Response: 2315791109
 Conc: 10956.24 ng/ml

Instrument :
 ECD_O
 ClientSampleId :



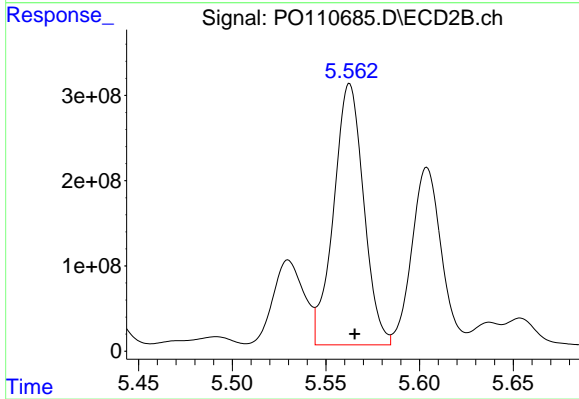
#19 AR-1242-4

R.T.: 5.041 min
 Delta R.T.: -0.003 min
 Response: 1661243079
 Conc: 13832.25 ng/ml



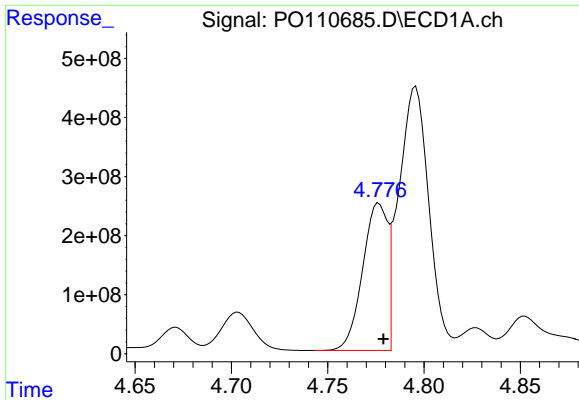
#20 AR-1242-5

R.T.: 5.625 min
 Delta R.T.: -0.003 min
 Response: 4271639288
 Conc: 18868.20 ng/ml



#20 AR-1242-5

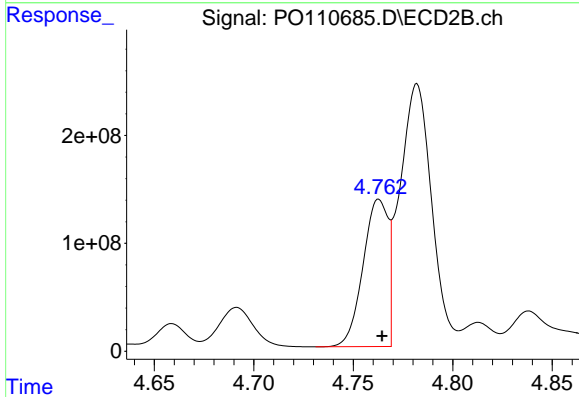
R.T.: 5.563 min
 Delta R.T.: -0.003 min
 Response: 3415865218
 Conc: 23541.96 ng/ml



#21 AR-1248-1

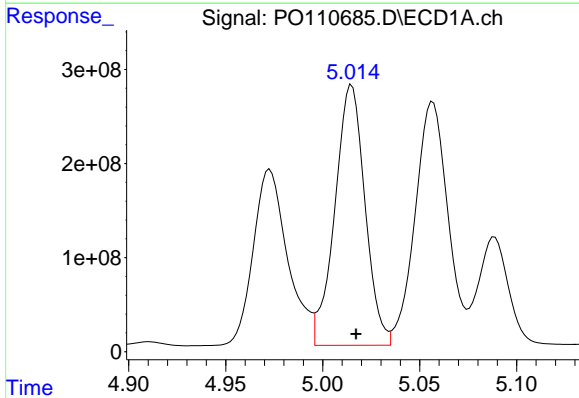
R.T.: 4.777 min
 Delta R.T.: -0.002 min
 Response: 2236000853
 Conc: 10505.73 ng/ml

Instrument :
 ECD_O
 ClientSampleId :



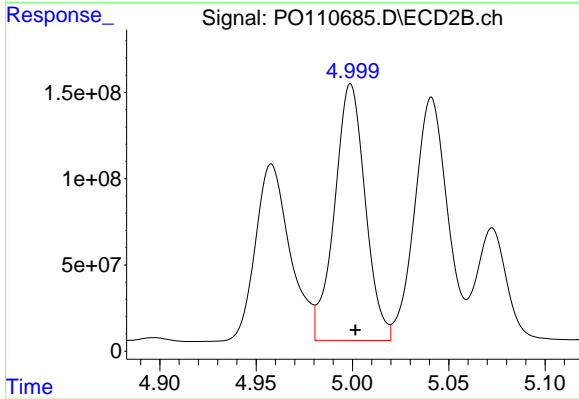
#21 AR-1248-1

R.T.: 4.763 min
 Delta R.T.: -0.002 min
 Response: 1191553930
 Conc: 10349.46 ng/ml



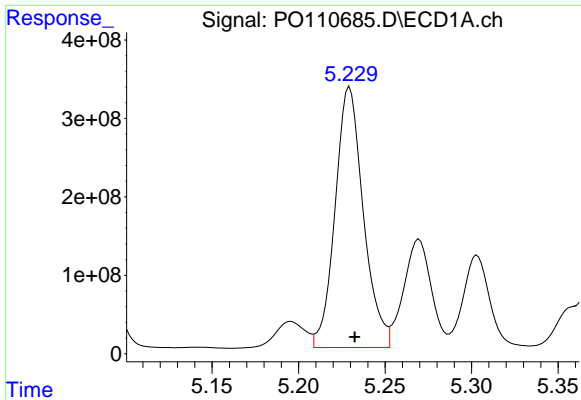
#22 AR-1248-2

R.T.: 5.015 min
 Delta R.T.: -0.002 min
 Response: 2995303367
 Conc: 10121.83 ng/ml



#22 AR-1248-2

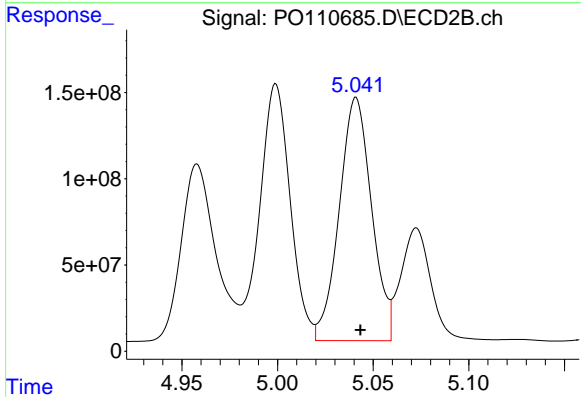
R.T.: 4.999 min
 Delta R.T.: -0.002 min
 Response: 1648786486
 Conc: 10122.55 ng/ml



#23 AR-1248-3

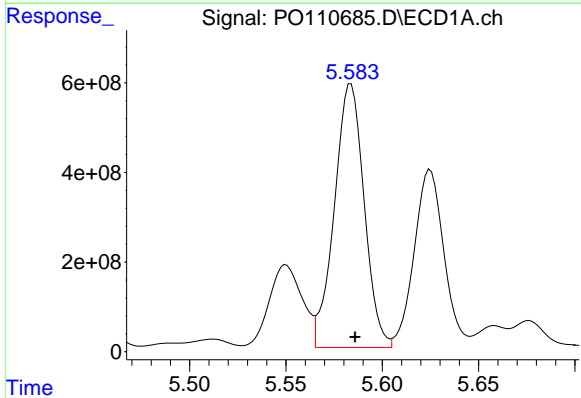
R.T.: 5.229 min
 Delta R.T.: -0.003 min
 Response: 3758682155
 Conc: 10159.66 ng/ml

Instrument :
 ECD_O
 ClientSampleId :



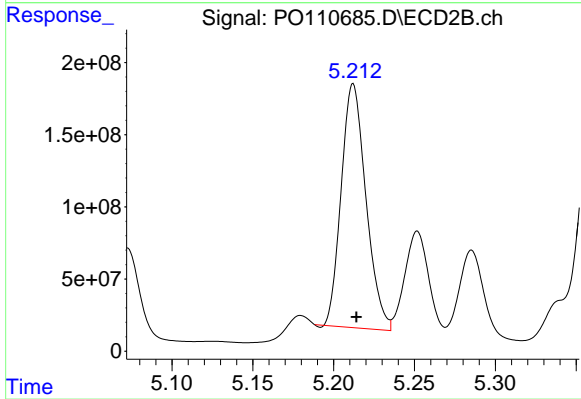
#23 AR-1248-3

R.T.: 5.041 min
 Delta R.T.: -0.002 min
 Response: 1661243079
 Conc: 9446.60 ng/ml



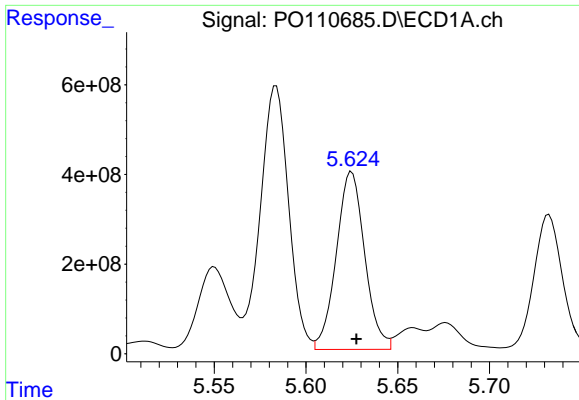
#24 AR-1248-4

R.T.: 5.584 min
 Delta R.T.: -0.002 min
 Response: 6327850417
 Conc: 12168.22 ng/ml



#24 AR-1248-4

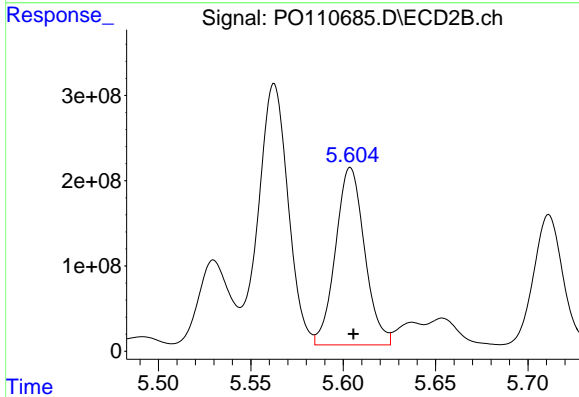
R.T.: 5.212 min
 Delta R.T.: -0.002 min
 Response: 1800223807
 Conc: 8838.55 ng/ml



#25 AR-1248-5

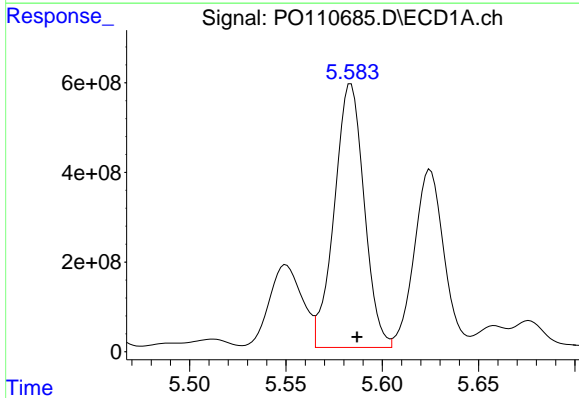
R.T.: 5.625 min
 Delta R.T.: -0.003 min
 Response: 4271639288
 Conc: 11562.92 ng/ml

Instrument :
 ECD_O
 ClientSampleId :



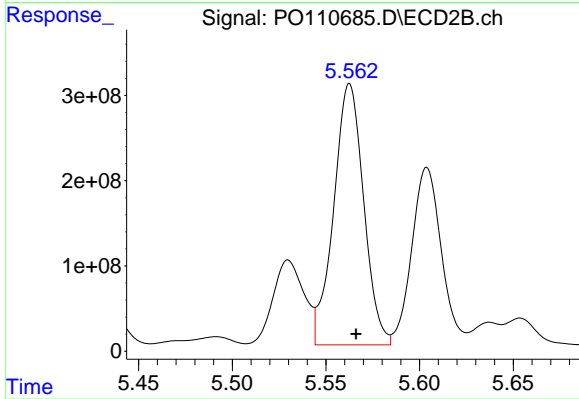
#25 AR-1248-5

R.T.: 5.604 min
 Delta R.T.: -0.002 min
 Response: 2278309890
 Conc: 11541.84 ng/ml



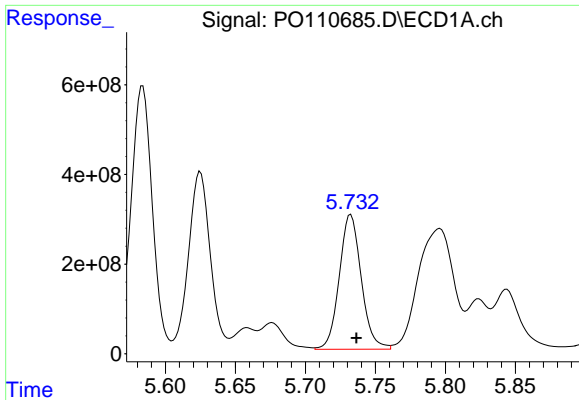
#26 AR-1254-1

R.T.: 5.584 min
 Delta R.T.: -0.003 min
 Response: 6327850417
 Conc: 11340.46 ng/ml



#26 AR-1254-1

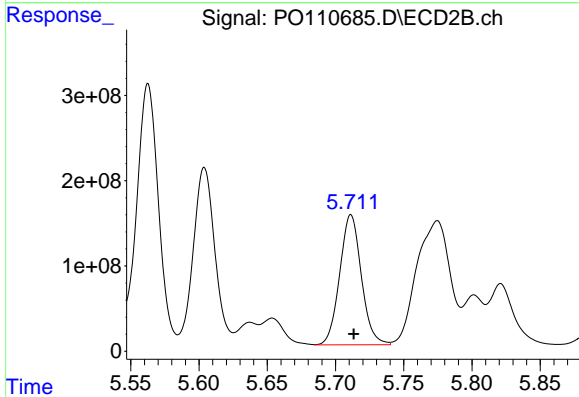
R.T.: 5.563 min
 Delta R.T.: -0.003 min
 Response: 3415865218
 Conc: 11329.60 ng/ml



#27 AR-1254-2

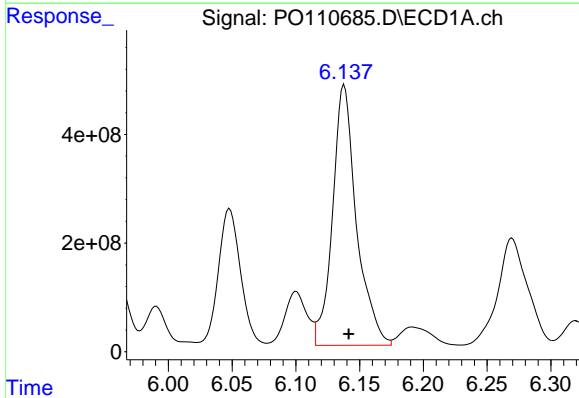
R.T.: 5.732 min
 Delta R.T.: -0.004 min
 Response: 3283688308
 Conc: 6760.70 ng/ml

Instrument :
 ECD_O
 ClientSampleId :



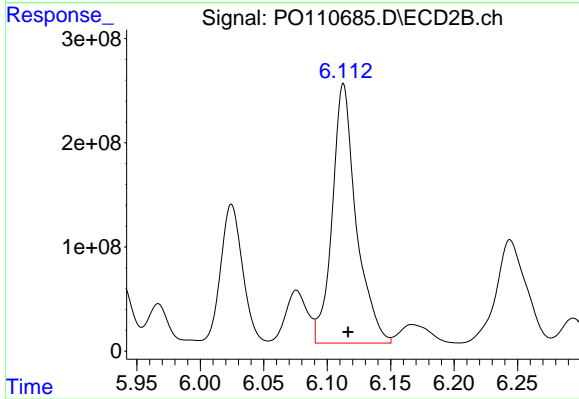
#27 AR-1254-2

R.T.: 5.711 min
 Delta R.T.: -0.002 min
 Response: 1685536067
 Conc: 6368.08 ng/ml



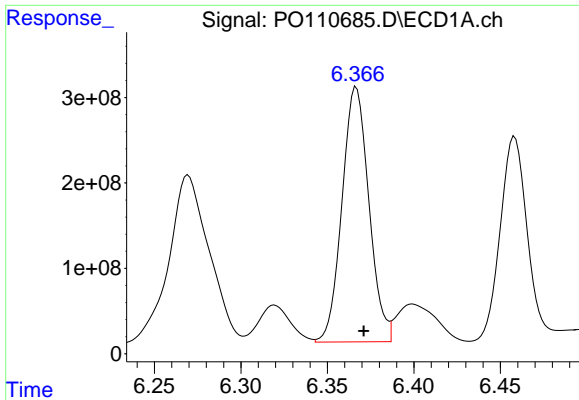
#28 AR-1254-3

R.T.: 6.138 min
 Delta R.T.: -0.004 min
 Response: 6268933838
 Conc: 8004.03 ng/ml



#28 AR-1254-3

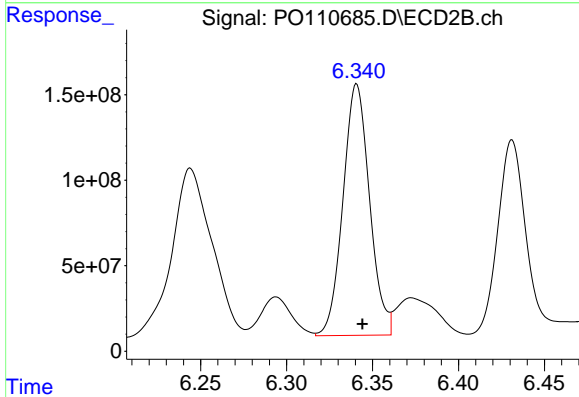
R.T.: 6.113 min
 Delta R.T.: -0.004 min
 Response: 3269368125
 Conc: 8104.21 ng/ml



#29 AR-1254-4

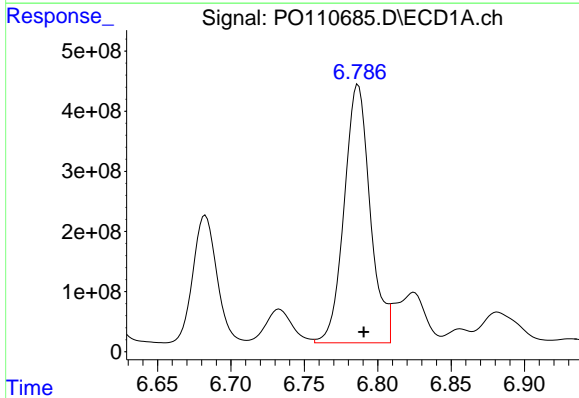
R.T.: 6.367 min
 Delta R.T.: -0.004 min
 Response: 3224365862
 Conc: 6612.66 ng/m

Instrument :
 ECD_O
 ClientSampleId :



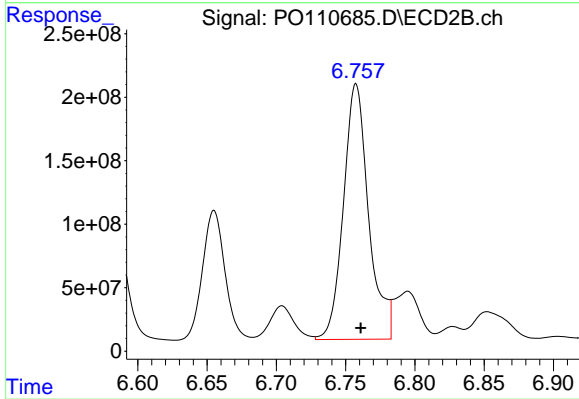
#29 AR-1254-4

R.T.: 6.341 min
 Delta R.T.: -0.003 min
 Response: 1582791027
 Conc: 6890.30 ng/ml



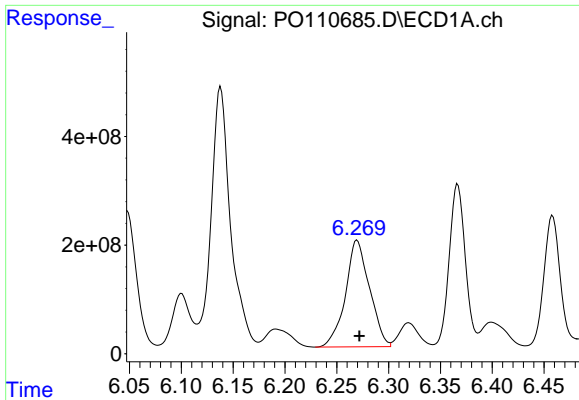
#30 AR-1254-5

R.T.: 6.787 min
 Delta R.T.: -0.004 min
 Response: 5295088355
 Conc: 7554.70 ng/ml



#30 AR-1254-5

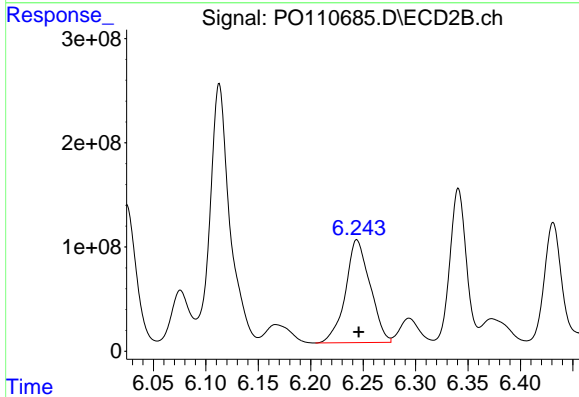
R.T.: 6.758 min
 Delta R.T.: -0.003 min
 Response: 2542189721
 Conc: 7650.48 ng/ml



#31 AR-1260-1

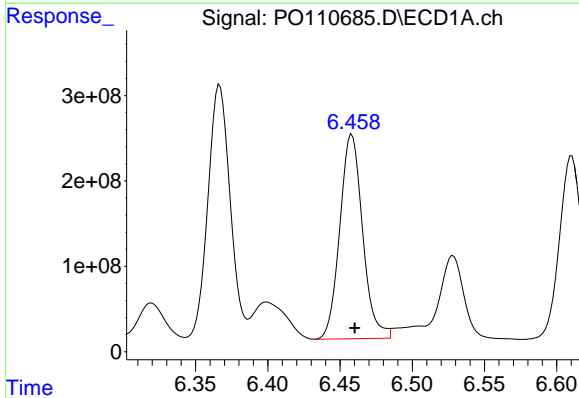
R.T.: 6.270 min
 Delta R.T.: -0.002 min
 Response: 3175114380
 Conc: 6720.60 ng/ml

Instrument :
 ECD_O
 ClientSampleId :



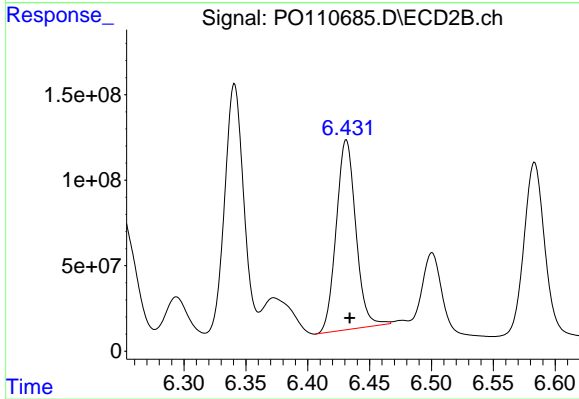
#31 AR-1260-1

R.T.: 6.244 min
 Delta R.T.: -0.002 min
 Response: 1610616723
 Conc: 6548.19 ng/ml



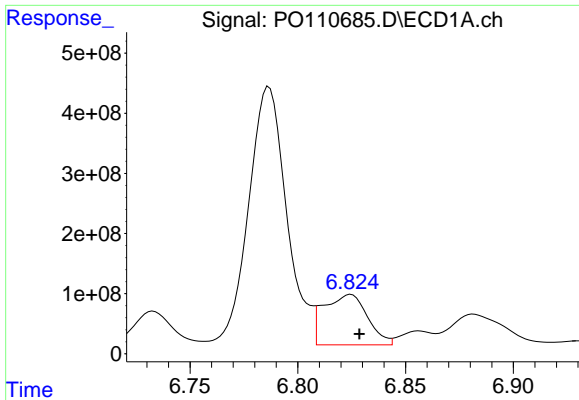
#32 AR-1260-2

R.T.: 6.458 min
 Delta R.T.: -0.002 min
 Response: 2619105709
 Conc: 4466.23 ng/ml



#32 AR-1260-2

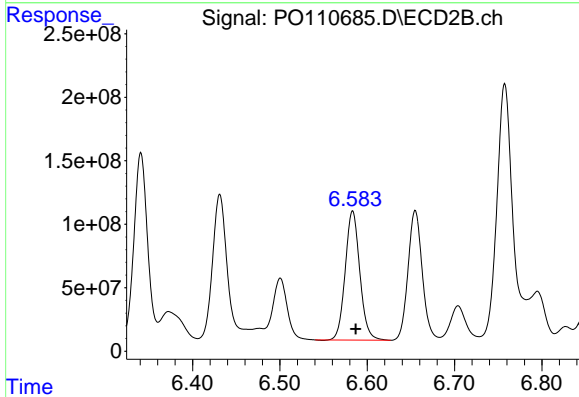
R.T.: 6.431 min
 Delta R.T.: -0.003 min
 Response: 1221647603
 Conc: 4187.30 ng/ml



#33 AR-1260-3

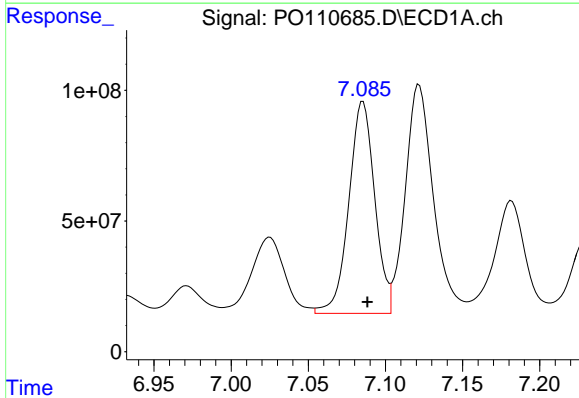
R.T.: 6.825 min
 Delta R.T.: -0.004 min
 Response: 1187638980
 Conc: 2409.63 ng/ml

Instrument :
 ECD_O
 ClientSampleId :



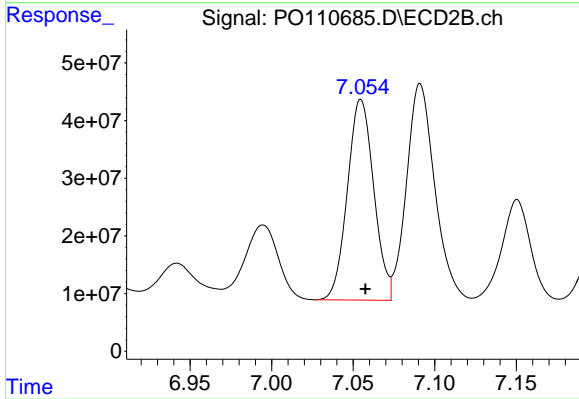
#33 AR-1260-3

R.T.: 6.583 min
 Delta R.T.: -0.003 min
 Response: 1181835597
 Conc: 4362.88 ng/ml



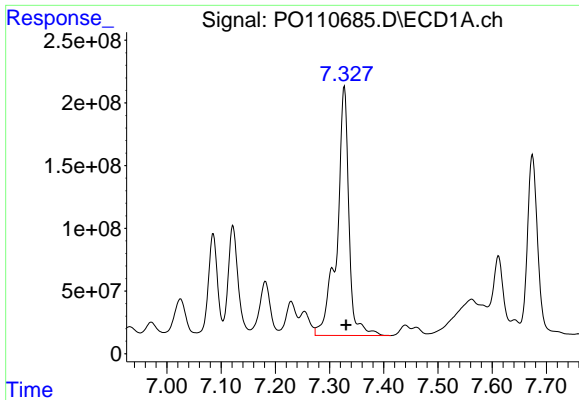
#34 AR-1260-4

R.T.: 7.085 min
 Delta R.T.: -0.003 min
 Response: 948147018
 Conc: 2233.97 ng/ml



#34 AR-1260-4

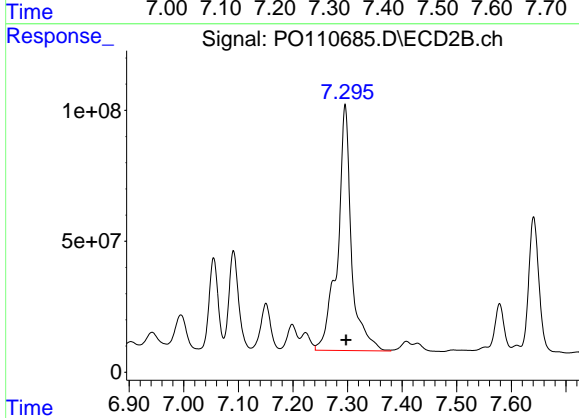
R.T.: 7.055 min
 Delta R.T.: -0.003 min
 Response: 391630169
 Conc: 1951.90 ng/ml



#35 AR-1260-5

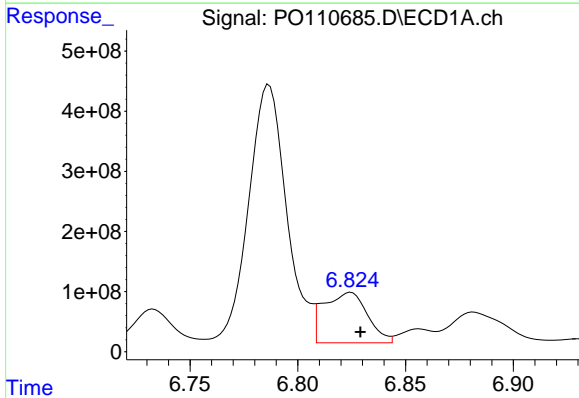
R.T.: 7.327 min
 Delta R.T.: -0.003 min
 Response: 3063621618
 Conc: 2935.99 ng/ml

Instrument :
 ECD_O
 ClientSampleId :



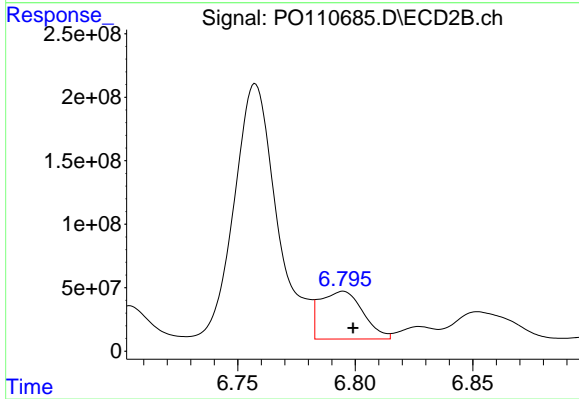
#35 AR-1260-5

R.T.: 7.296 min
 Delta R.T.: -0.002 min
 Response: 1665356730
 Conc: 3629.35 ng/ml



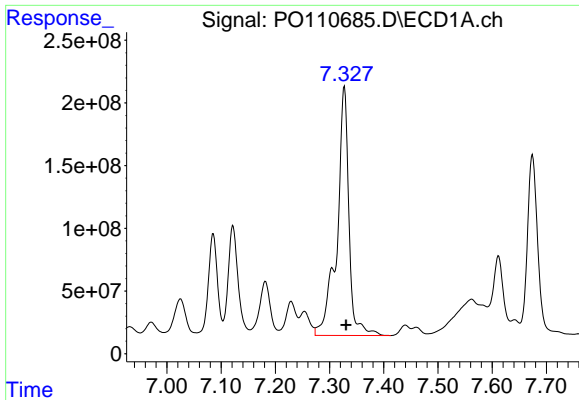
#36 AR-1262-1

R.T.: 6.825 min
 Delta R.T.: -0.004 min
 Response: 1187638980
 Conc: 1693.10 ng/ml



#36 AR-1262-1

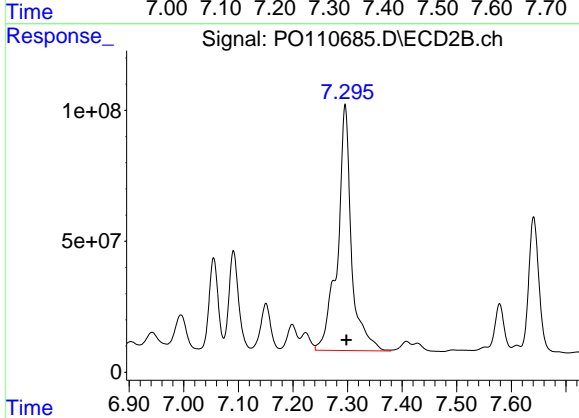
R.T.: 6.795 min
 Delta R.T.: -0.004 min
 Response: 478312068
 Conc: 1452.34 ng/ml



#37 AR-1262-2

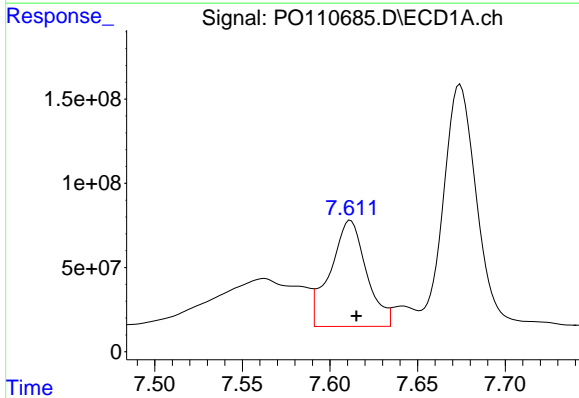
R.T.: 7.327 min
 Delta R.T.: -0.003 min
 Response: 3063621618
 Conc: 2536.66 ng/ml

Instrument :
 ECD_O
 ClientSampleId :



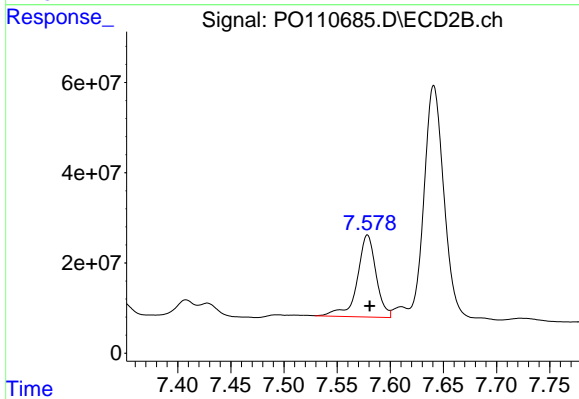
#37 AR-1262-2

R.T.: 7.296 min
 Delta R.T.: -0.002 min
 Response: 1665356730
 Conc: 3275.31 ng/ml



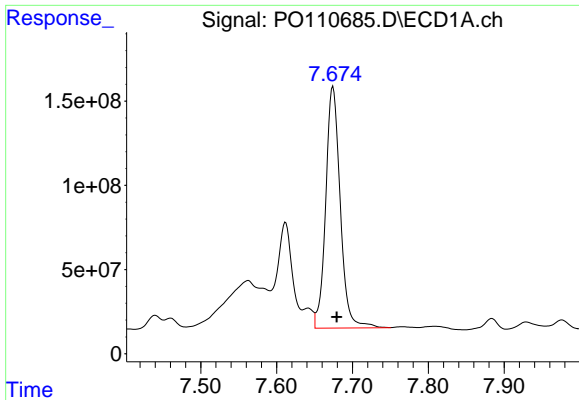
#38 AR-1262-3

R.T.: 7.612 min
 Delta R.T.: -0.003 min
 Response: 904801135
 Conc: 1777.24 ng/ml



#38 AR-1262-3

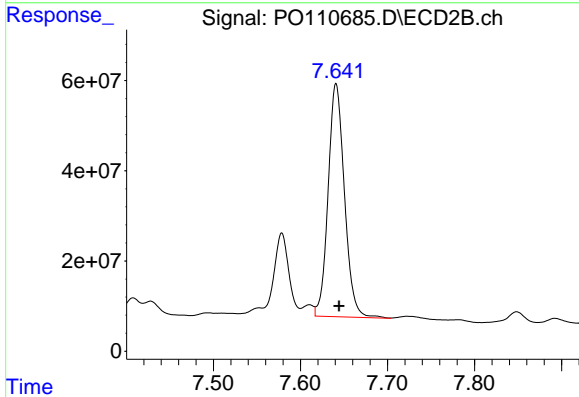
R.T.: 7.579 min
 Delta R.T.: -0.002 min
 Response: 224544590
 Conc: 1159.66 ng/ml



#39 AR-1262-4

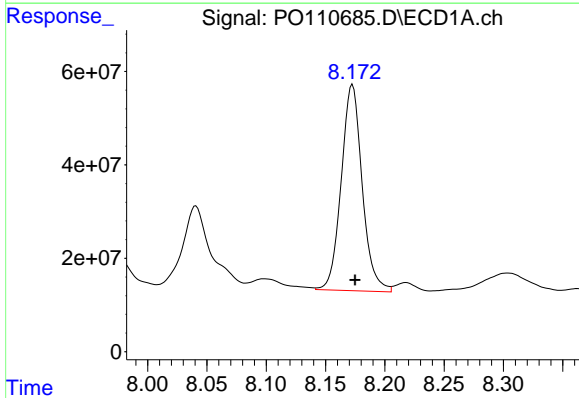
R.T.: 7.674 min
 Delta R.T.: -0.005 min
 Response: 1911964529
 Conc: 2133.24 ng/m

Instrument :
 ECD_O
 ClientSampleId :



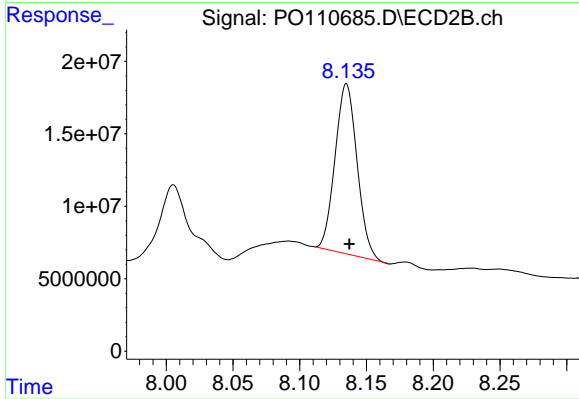
#39 AR-1262-4

R.T.: 7.641 min
 Delta R.T.: -0.003 min
 Response: 673201397
 Conc: 1939.76 ng/ml



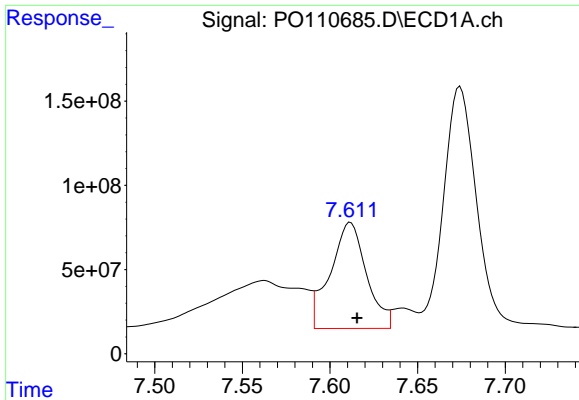
#40 AR-1262-5

R.T.: 8.173 min
 Delta R.T.: -0.002 min
 Response: 543241703
 Conc: 1348.01 ng/ml



#40 AR-1262-5

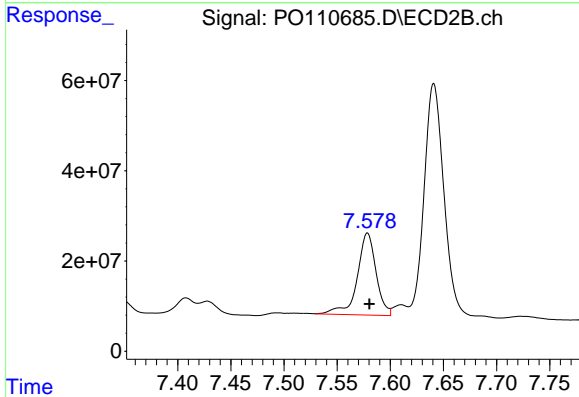
R.T.: 8.135 min
 Delta R.T.: -0.002 min
 Response: 134910951
 Conc: 1082.80 ng/ml



#41 AR-1268-1

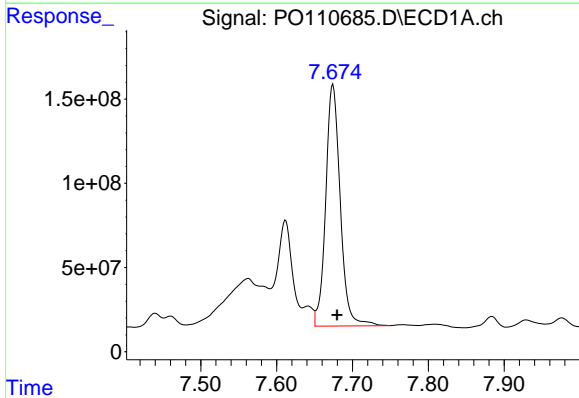
R.T.: 7.612 min
 Delta R.T.: -0.004 min
 Response: 904801135
 Conc: 644.37 ng/ml

Instrument :
 ECD_O
 ClientSampleId :



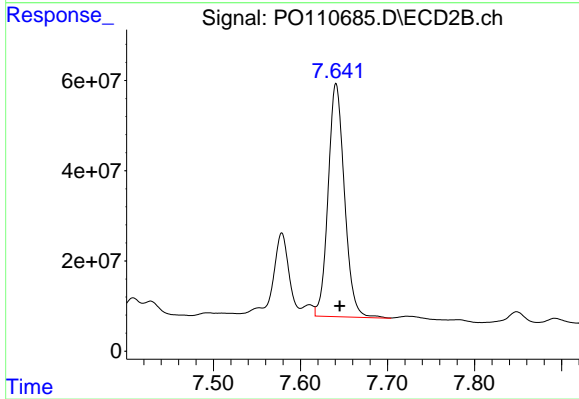
#41 AR-1268-1

R.T.: 7.579 min
 Delta R.T.: -0.002 min
 Response: 224544590
 Conc: 409.95 ng/ml



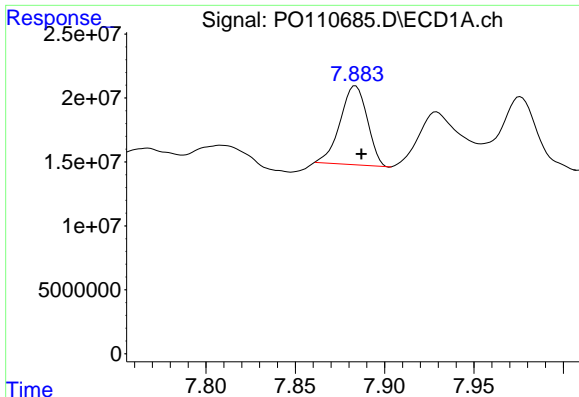
#42 AR-1268-2

R.T.: 7.674 min
 Delta R.T.: -0.005 min
 Response: 1911964529
 Conc: 1494.02 ng/ml



#42 AR-1268-2

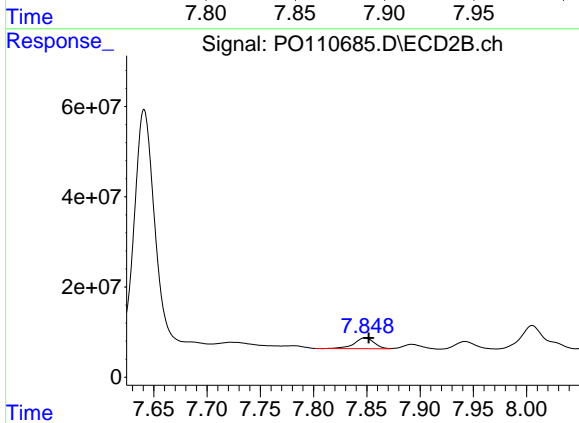
R.T.: 7.641 min
 Delta R.T.: -0.004 min
 Response: 673201397
 Conc: 1353.20 ng/ml



#43 AR-1268-3

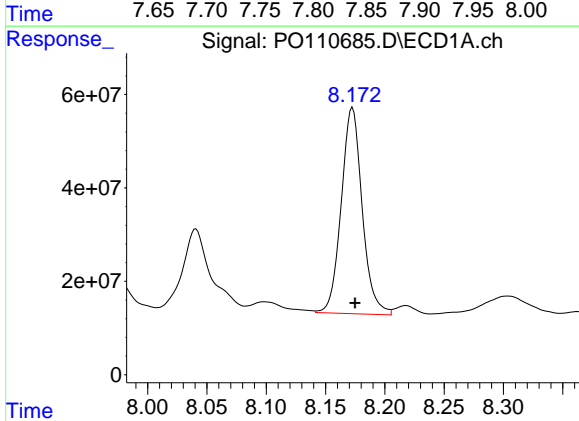
R.T.: 7.884 min
 Delta R.T.: -0.003 min
 Response: 64980173
 Conc: 62.30 ng/ml

Instrument :
 ECD_O
 ClientSampleId :



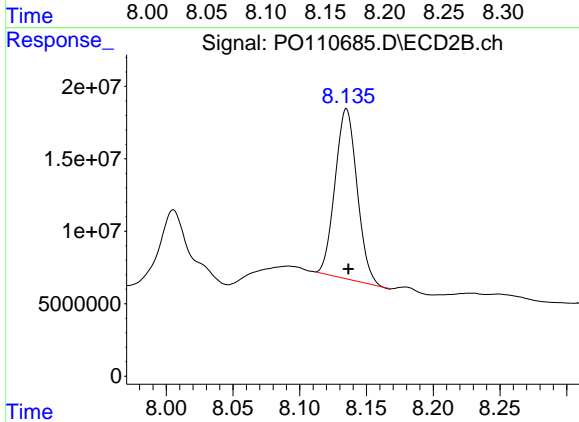
#43 AR-1268-3

R.T.: 7.848 min
 Delta R.T.: -0.004 min
 Response: 31454223
 Conc: 84.65 ng/ml



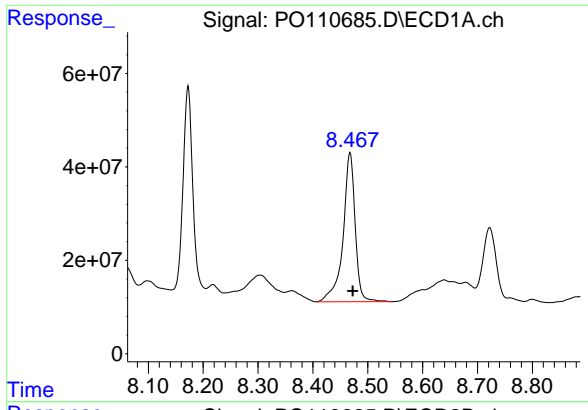
#44 AR-1268-4

R.T.: 8.173 min
 Delta R.T.: -0.002 min
 Response: 543241703
 Conc: 1223.08 ng/ml



#44 AR-1268-4

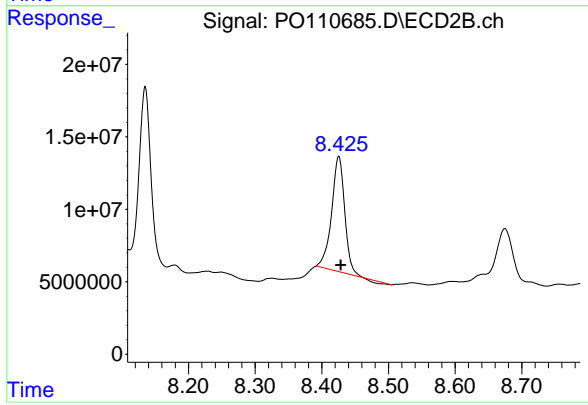
R.T.: 8.135 min
 Delta R.T.: -0.001 min
 Response: 134910951
 Conc: 955.88 ng/ml



#45 AR-1268-5

R.T.: 8.468 min
Delta R.T.: -0.005 min
Response: 492145905
Conc: 152.85 ng/ml

Instrument :
ECD_O
ClientSampleId :



#45 AR-1268-5

R.T.: 8.425 min
Delta R.T.: -0.003 min
Response: 107047210
Conc: 135.98 ng/ml