

Data Path : Z:\pestpcbsrv\HPCHEM1\ECD_O\Data\P0042425\
 Data File : PO110687.D
 Signal(s) : Signal #1: ECD1A.ch Signal #2: ECD2B.ch
 Acq On : 24 Apr 2025 15:46
 Operator : YP/AJ
 Sample : Q1860-18
 Misc :
 ALS Vial : 16 Sample Multiplier: 1

Instrument :
 ECD_O
 ClientSampleId :

Integration File signal 1: autoint1.e
 Integration File signal 2: autoint2.e
 Quant Time: Apr 25 00:27:22 2025
 Quant Method : Z:\pestpcbsrv\HPCHEM1\ECD_O\methods\P0041025.M
 Quant Title : GC EXTRACTABLES
 QLast Update : Fri Apr 11 02:12:41 2025
 Response via : Initial Calibration
 Integrator: ChemStation

Volume Inj. : 2 µl
 Signal #1 Phase : ZB-MR1 Signal #2 Phase: ZB-MR2
 Signal #1 Info : 30Mx0.32mmx 0.50µ Signal #2 Info : 30M x 0.32mm x 0.25µm

Compound	RT#1	RT#2	Resp#1	Resp#2	ng/ml	ng/ml
System Monitoring Compounds						
1) SA Tetrachlo...	3.686	3.683	165.7E6	89728946	18.943	17.983
2) SA Decachlor...	8.728	8.680	93678510	25101004	11.866	13.040
Target Compounds						
3) L1 AR-1016-1	4.776	4.762	22816523	12189999	69.532	69.455
4) L1 AR-1016-2	4.795	4.781	41616314	21551730	91.475	85.705
5) L1 AR-1016-3	4.853	4.959	7952054	17047722	24.655	125.618 #
6) L1 AR-1016-4	4.974	4.999	31480460	32282158	126.344	282.266 #
7) L1 AR-1016-5	5.229	5.212	50535623	18205147	187.857	122.122 #
8) L2 AR-1221-1	3.888	3.881	3774053	1782816	31.974	26.700
9) L2 AR-1221-2	3.987	3.981	5268357	2236151	59.635	44.637 #
10) L2 AR-1221-3	4.061	4.053	4115411	1757793	15.641	11.784
11) L3 AR-1232-1	4.061	4.053	4115411	1757793	20.092	15.282
12) L3 AR-1232-2	4.550	4.781	14127169	21551730	132.390	194.391 #
13) L3 AR-1232-3	4.795	4.959	41616314	17047722	208.309	298.021 #
14) L3 AR-1232-4	4.974	5.040	31480460	21981352	307.732	407.414 #
15) L3 AR-1232-5	5.015	5.212	58374292	18205147	847.203	318.629 #
16) L4 AR-1242-1	4.776	4.762	22816523	12189999	82.212	81.537
17) L4 AR-1242-2	4.795	4.781	41616314	21551730	107.878	101.010
18) L4 AR-1242-3	4.853	4.959	7952054	17047722	28.584	147.494 #
19) L4 AR-1242-4	4.974	5.040	31480460	21981352	148.937	183.027
20) L4 AR-1242-5	5.625	5.563	47571342	65451234	210.127	451.086 #
21) L5 AR-1248-1	4.776	4.762	22816523	12189999	107.202	105.878
22) L5 AR-1248-2	5.015	4.999	58374292	32282158	197.260	198.193
23) L5 AR-1248-3	5.229	5.040	50535623	21981352	136.597	124.996
24) L5 AR-1248-4	5.584	5.212	123.0E6	18205147	236.478	89.382 #
25) L5 AR-1248-5	5.625	5.603	47571342	23340831	128.771	118.244
26) L6 AR-1254-1	5.584	5.563	123.0E6	65451234	220.391	217.086
27) L6 AR-1254-2	5.733	5.710	114.7E6	55346233	236.193	209.102
28) L6 AR-1254-3	6.138	6.113	220.5E6	116.0E6	281.512	287.643
29) L6 AR-1254-4	6.367	6.340	55457157	28314463	113.734	123.260
30) L6 AR-1254-5	6.786	6.757	202.8E6	94216849	289.344	283.537
31) L7 AR-1260-1	6.269	6.243	123.2E6	64323582	260.708	261.517
32) L7 AR-1260-2	6.458	6.431	127.2E6	58177558	216.930	199.408
33) L7 AR-1260-3	6.825	6.582	65073144	52744708	132.028	194.713 #
34) L7 AR-1260-4	7.085	7.054	53749536	21954696	126.641	109.423
35) L7 AR-1260-5	7.327	7.296	139.1E6	171.5E6	133.331	373.790 #
36) L8 AR-1262-1	6.825	6.795	65073144	26678888	92.768	81.007
37) L8 AR-1262-2	7.327	7.296	139.1E6	171.5E6	115.196	337.327 #
38) L8 AR-1262-3	7.611	7.577	112.8E6	14349580	221.511	74.108 #
39) L8 AR-1262-4	7.674	7.640	98388258	36463114	109.775	105.065
40) L8 AR-1262-5	8.172	8.134	23524350	7850394	58.374	63.007
41) L9 AR-1268-1	7.611	7.577	112.8E6	14349580	80.312	26.198 #

Data Path : Z:\pestpcbsrv\HPCHEM1\ECD_0\Data\P0042425\
 Data File : P0110687.D
 Signal(s) : Signal #1: ECD1A.ch Signal #2: ECD2B.ch
 Acq On : 24 Apr 2025 15:46
 Operator : YP/AJ
 Sample : Q1860-18
 Misc :
 ALS Vial : 16 Sample Multiplier: 1

Instrument :
 ECD_0
 ClientSampleId :

Integration File signal 1: autoint1.e
 Integration File signal 2: autoint2.e
 Quant Time: Apr 25 00:27:22 2025
 Quant Method : Z:\pestpcbsrv\HPCHEM1\ECD_0\methods\P0041025.M
 Quant Title : GC EXTRACTABLES
 QLast Update : Fri Apr 11 02:12:41 2025
 Response via : Initial Calibration
 Integrator: ChemStation

Volume Inj. : 2 µl
 Signal #1 Phase : ZB-MR1 Signal #2 Phase: ZB-MR2
 Signal #1 Info : 30Mx0.32mmx 0.50µ Signal #2 Info : 30M x 0.32mm x 0.25µm

	Compound	RT#1	RT#2	Resp#1	Resp#2	ng/ml	ng/ml
42)	L9 AR-1268-2	7.674	7.640	98388258	36463114	76.881	73.294
43)	L9 AR-1268-3	7.883	7.848	3500804	1862520	3.357	5.013 #
44)	L9 AR-1268-4	8.172	8.134	23524350	7850394	52.964	55.622
45)	L9 AR-1268-5	8.467	8.426	16296975	5788772	5.061	7.354 #

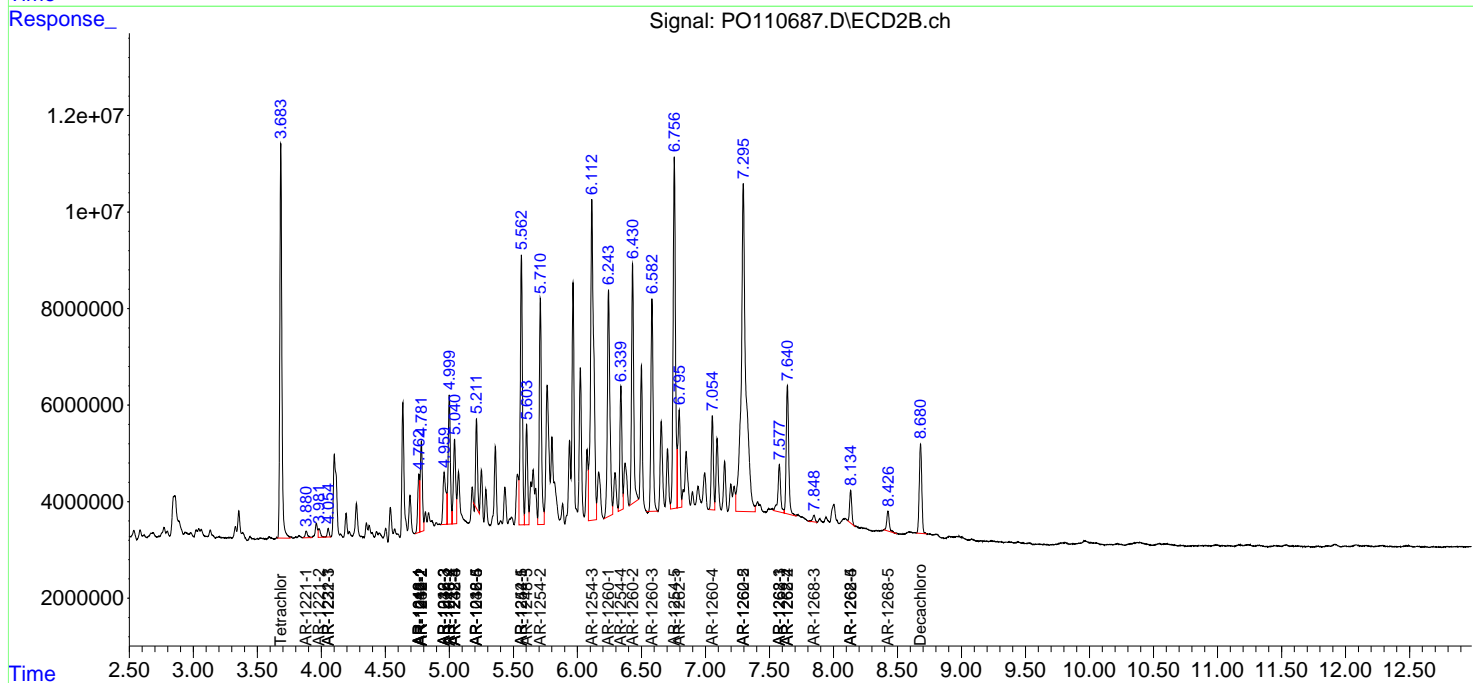
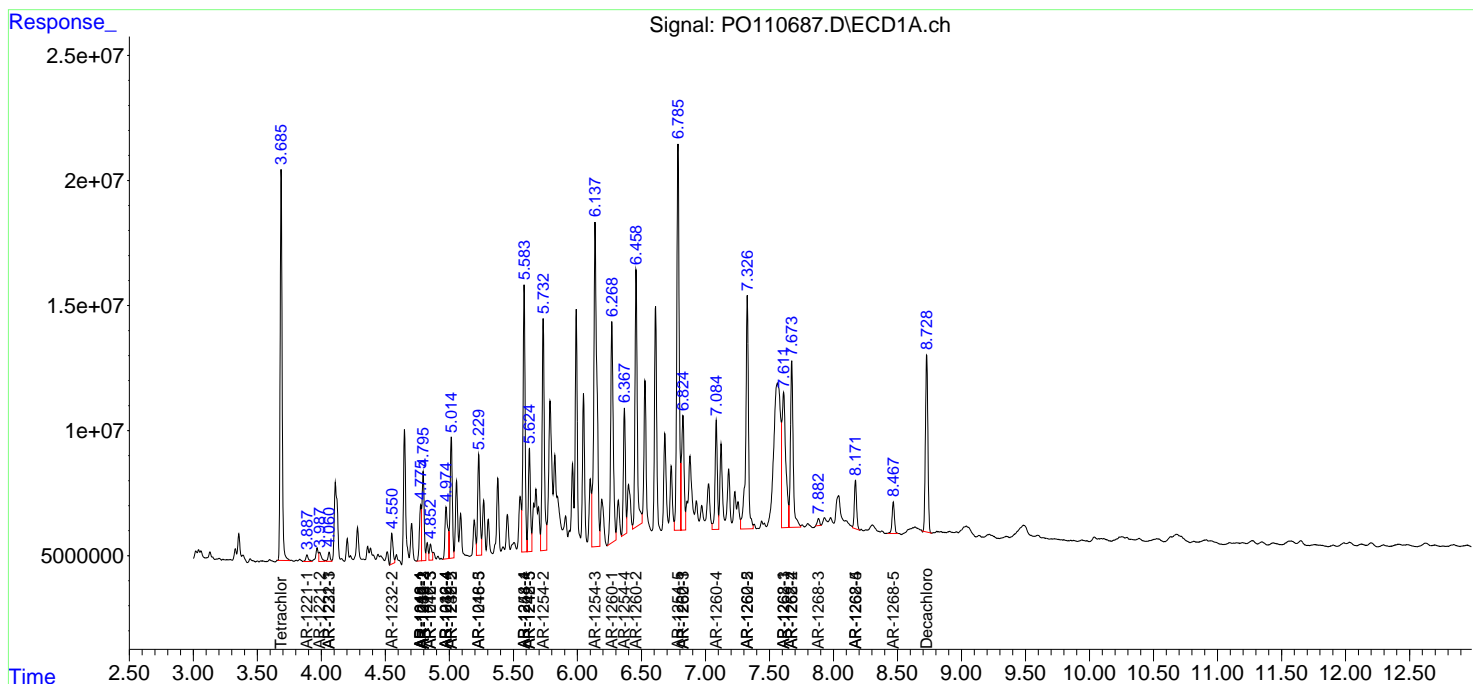
(f)=RT Delta > 1/2 Window (#)=Amounts differ by > 25% (m)=manual int.

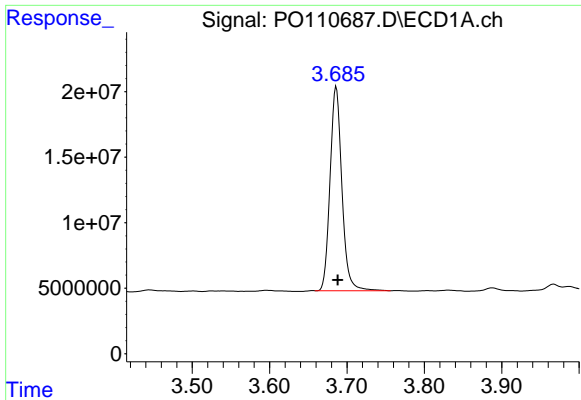
Data Path : Z:\pestpcbsrv\HPCHEM1\ECD_O\Data\PO042425\
 Data File : PO110687.D
 Signal(s) : Signal #1: ECD1A.ch Signal #2: ECD2B.ch
 Acq On : 24 Apr 2025 15:46
 Operator : YP/AJ
 Sample : Q1860-18
 Misc :
 ALS Vial : 16 Sample Multiplier: 1

Instrument :
 ECD_O
 ClientSampleId :

Integration File signal 1: autoint1.e
 Integration File signal 2: autoint2.e
 Quant Time: Apr 25 00:27:22 2025
 Quant Method : Z:\pestpcbsrv\HPCHEM1\ECD_O\methods\PO041025.M
 Quant Title : GC EXTRACTABLES
 QLast Update : Fri Apr 11 02:12:41 2025
 Response via : Initial Calibration
 Integrator: ChemStation

Volume Inj. : 2 µl
 Signal #1 Phase : ZB-MR1 Signal #2 Phase: ZB-MR2
 Signal #1 Info : 30Mx0.32mmx 0.50µ Signal #2 Info : 30M x 0.32mm x 0.25µm

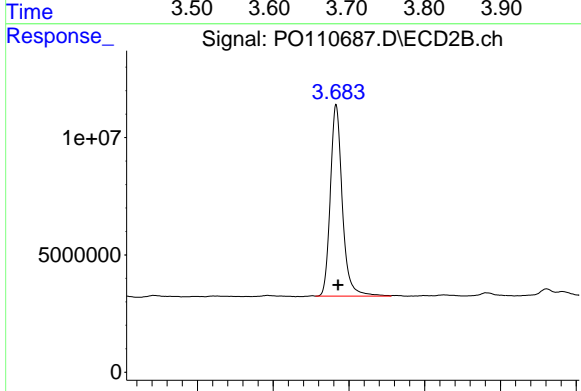




#1 Tetrachloro-m-xylene

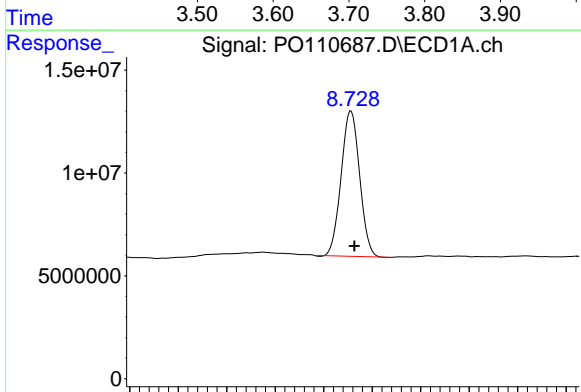
R.T.: 3.686 min
 Delta R.T.: -0.002 min
 Response: 165733411
 Conc: 18.94 ng/ml

Instrument :
 ECD_O
 ClientSampleId :



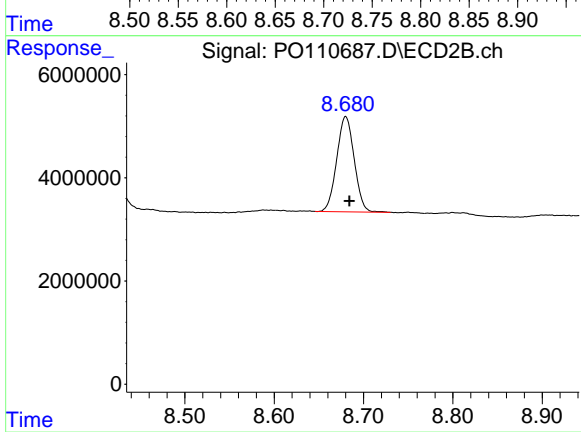
#1 Tetrachloro-m-xylene

R.T.: 3.683 min
 Delta R.T.: -0.003 min
 Response: 89728946
 Conc: 17.98 ng/ml



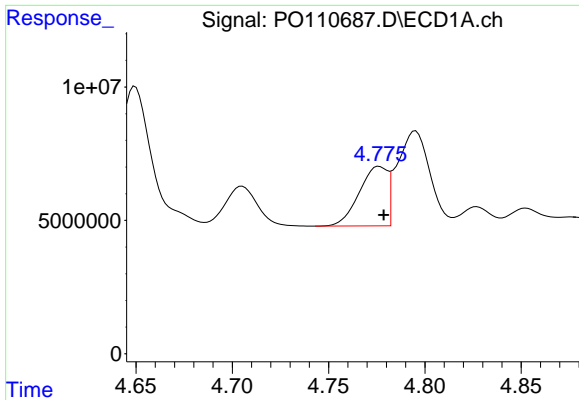
#2 Decachlorobiphenyl

R.T.: 8.728 min
 Delta R.T.: -0.003 min
 Response: 93678510
 Conc: 11.87 ng/ml



#2 Decachlorobiphenyl

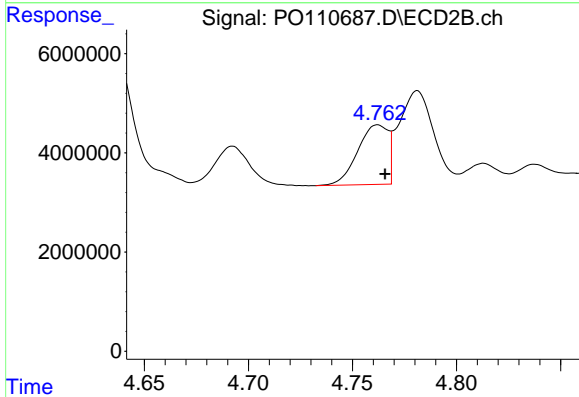
R.T.: 8.680 min
 Delta R.T.: -0.004 min
 Response: 25101004
 Conc: 13.04 ng/ml



#3 AR-1016-1

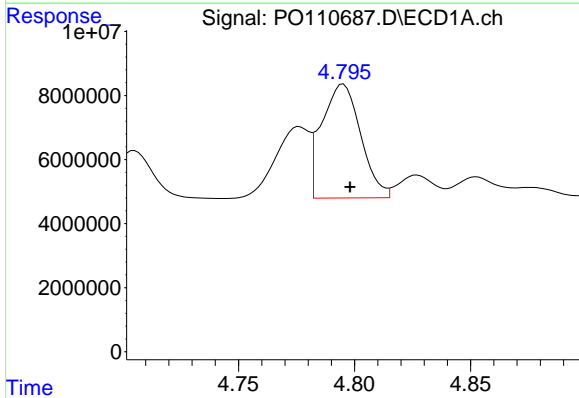
R.T.: 4.776 min
 Delta R.T.: -0.002 min
 Response: 22816523
 Conc: 69.53 ng/ml

Instrument :
 ECD_O
 ClientSampleId :



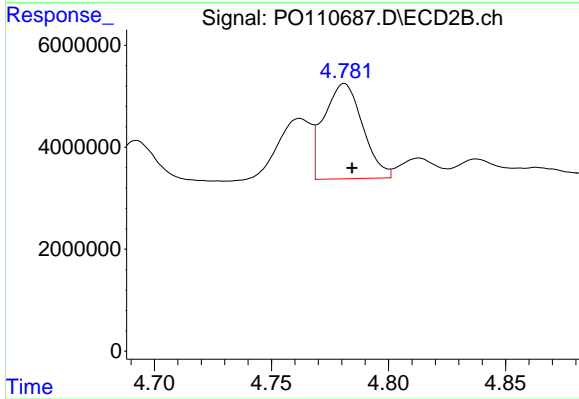
#3 AR-1016-1

R.T.: 4.762 min
 Delta R.T.: -0.004 min
 Response: 12189999
 Conc: 69.45 ng/ml



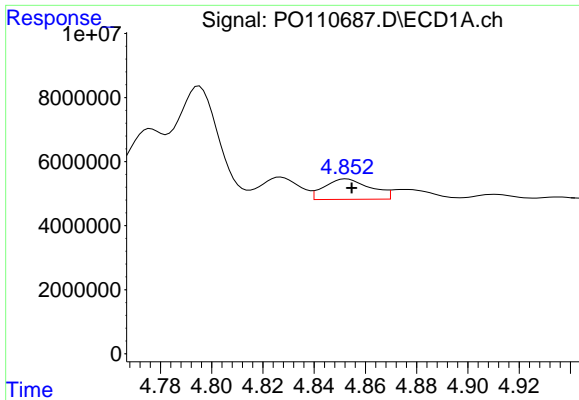
#4 AR-1016-2

R.T.: 4.795 min
 Delta R.T.: -0.003 min
 Response: 41616314
 Conc: 91.47 ng/ml



#4 AR-1016-2

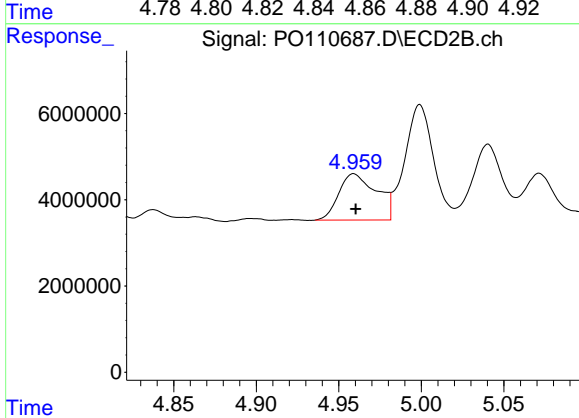
R.T.: 4.781 min
 Delta R.T.: -0.003 min
 Response: 21551730
 Conc: 85.70 ng/ml



#5 AR-1016-3

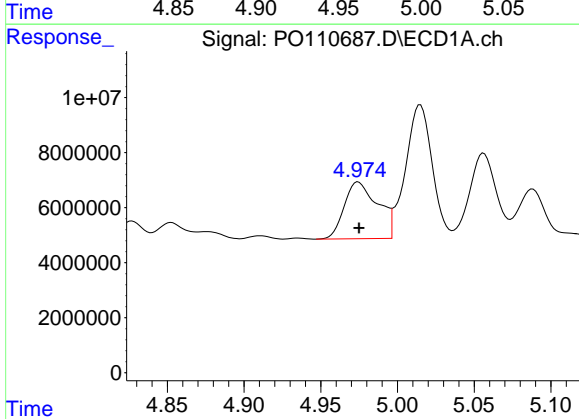
R.T.: 4.853 min
 Delta R.T.: -0.002 min
 Response: 7952054
 Conc: 24.66 ng/ml

Instrument :
 ECD_O
 ClientSampleId :



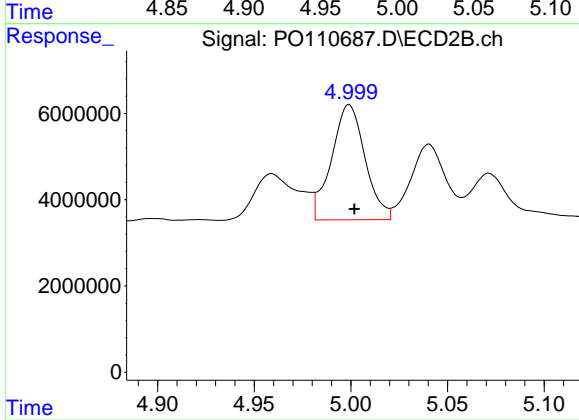
#5 AR-1016-3

R.T.: 4.959 min
 Delta R.T.: -0.001 min
 Response: 17047722
 Conc: 125.62 ng/ml



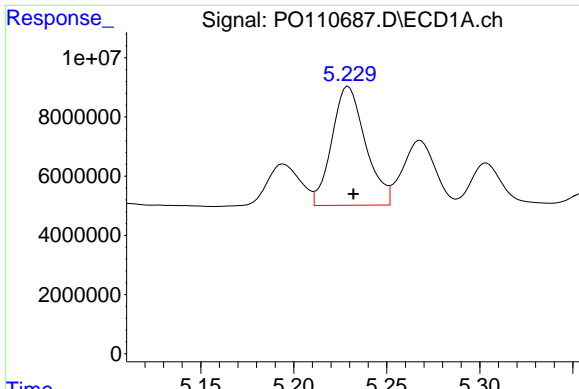
#6 AR-1016-4

R.T.: 4.974 min
 Delta R.T.: 0.000 min
 Response: 31480460
 Conc: 126.34 ng/ml



#6 AR-1016-4

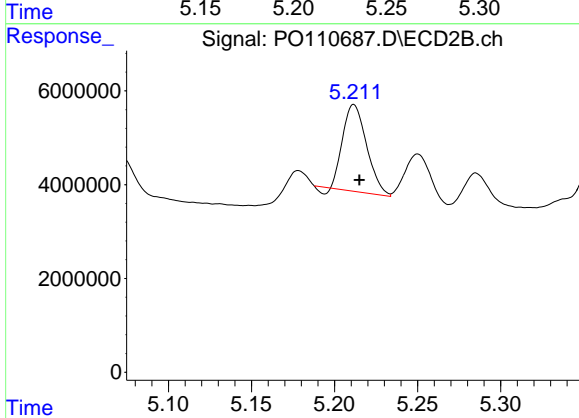
R.T.: 4.999 min
 Delta R.T.: -0.003 min
 Response: 32282158
 Conc: 282.27 ng/ml



#7 AR-1016-5

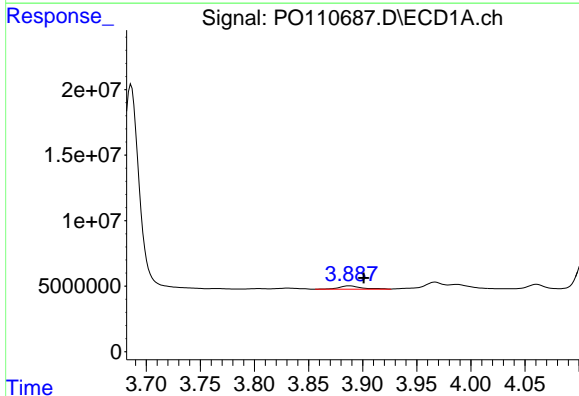
R.T.: 5.229 min
 Delta R.T.: -0.003 min
 Response: 50535623
 Conc: 187.86 ng/ml

Instrument :
 ECD_O
 ClientSampleId :



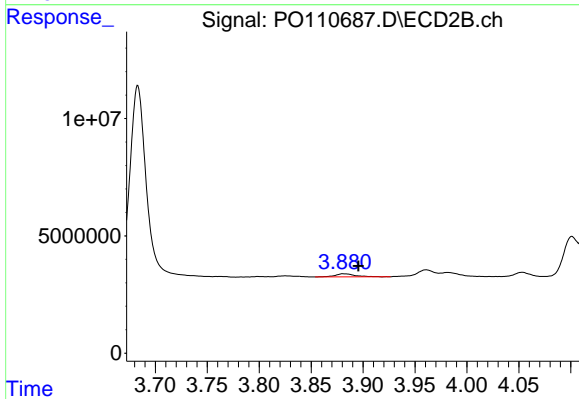
#7 AR-1016-5

R.T.: 5.212 min
 Delta R.T.: -0.003 min
 Response: 18205147
 Conc: 122.12 ng/ml



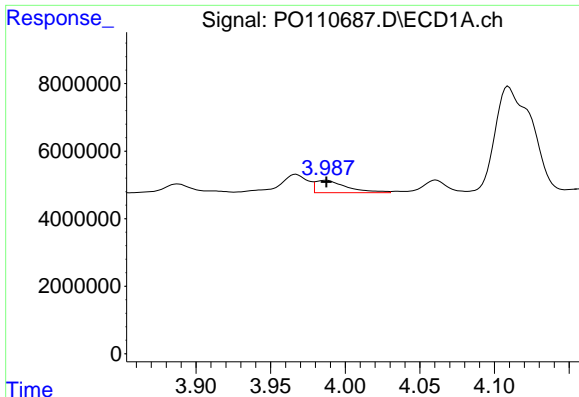
#8 AR-1221-1

R.T.: 3.888 min
 Delta R.T.: -0.013 min
 Response: 3774053
 Conc: 31.97 ng/ml



#8 AR-1221-1

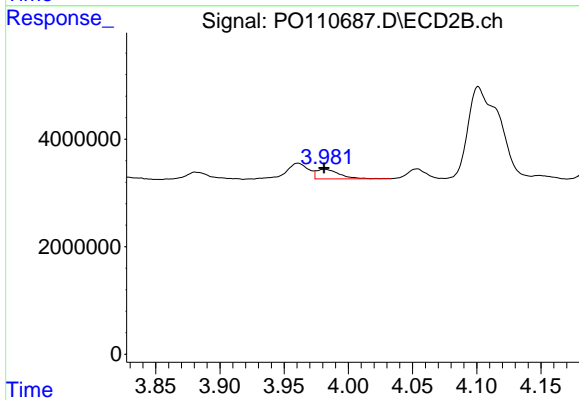
R.T.: 3.881 min
 Delta R.T.: -0.014 min
 Response: 1782816
 Conc: 26.70 ng/ml



#9 AR-1221-2

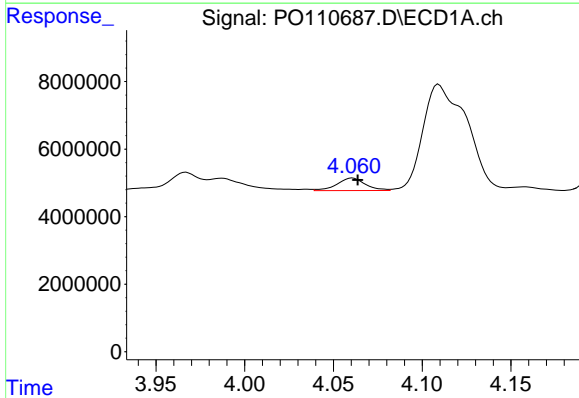
R.T.: 3.987 min
 Delta R.T.: 0.000 min
 Response: 5268357
 Conc: 59.63 ng/ml

Instrument :
 ECD_O
 ClientSampleId :



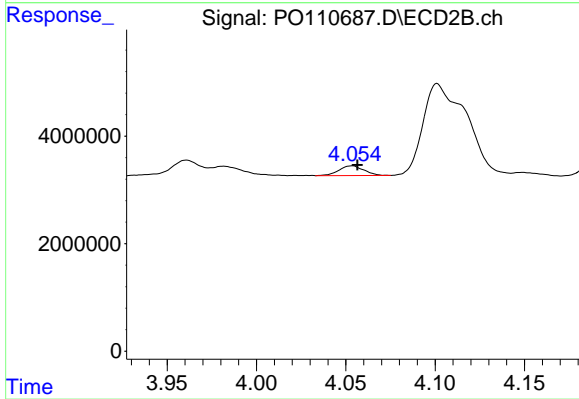
#9 AR-1221-2

R.T.: 3.981 min
 Delta R.T.: 0.000 min
 Response: 2236151
 Conc: 44.64 ng/ml



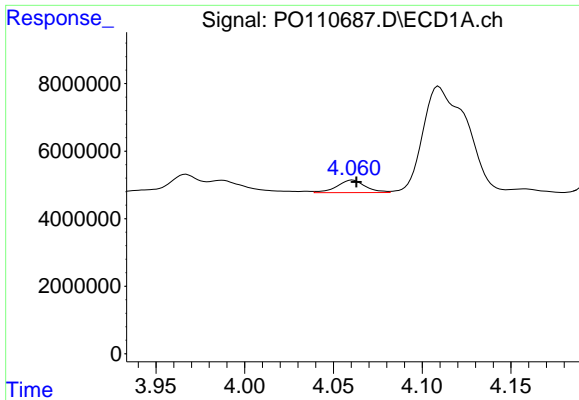
#10 AR-1221-3

R.T.: 4.061 min
 Delta R.T.: -0.003 min
 Response: 4115411
 Conc: 15.64 ng/ml



#10 AR-1221-3

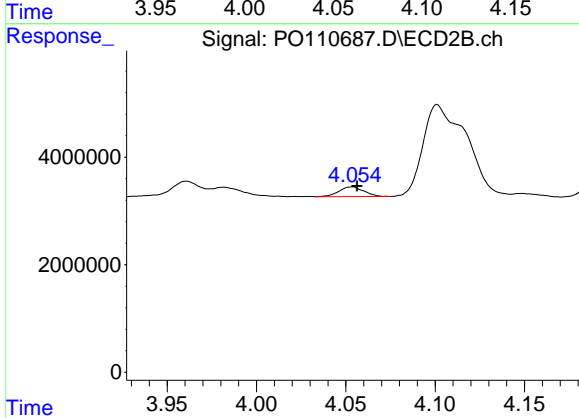
R.T.: 4.053 min
 Delta R.T.: -0.003 min
 Response: 1757793
 Conc: 11.78 ng/ml



#11 AR-1232-1

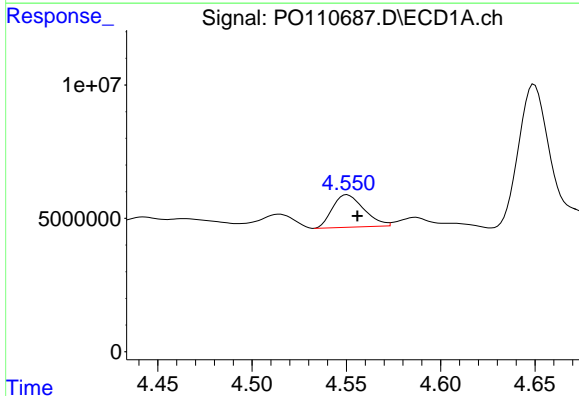
R.T.: 4.061 min
 Delta R.T.: -0.002 min
 Response: 4115411
 Conc: 20.09 ng/ml

Instrument :
 ECD_O
 ClientSampleId :



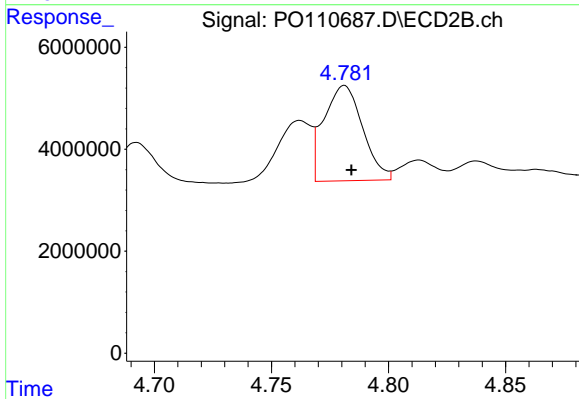
#11 AR-1232-1

R.T.: 4.053 min
 Delta R.T.: -0.003 min
 Response: 1757793
 Conc: 15.28 ng/ml



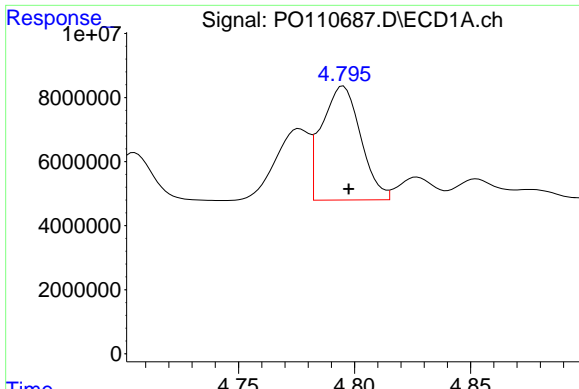
#12 AR-1232-2

R.T.: 4.550 min
 Delta R.T.: -0.005 min
 Response: 14127169
 Conc: 132.39 ng/ml



#12 AR-1232-2

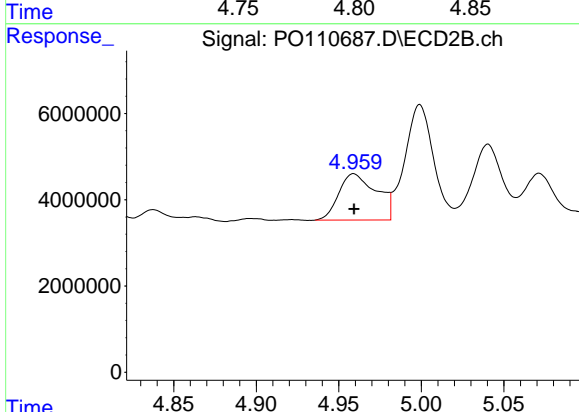
R.T.: 4.781 min
 Delta R.T.: -0.003 min
 Response: 21551730
 Conc: 194.39 ng/ml



#13 AR-1232-3

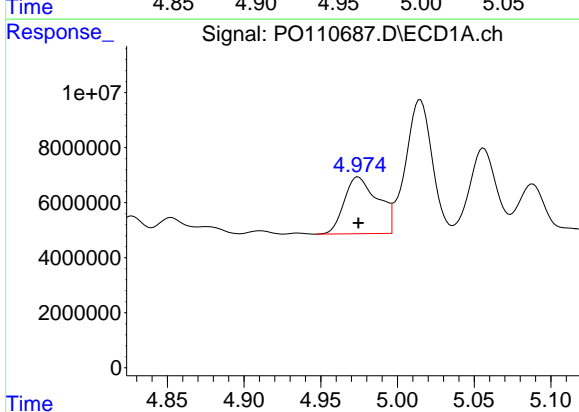
R.T.: 4.795 min
 Delta R.T.: -0.002 min
 Response: 41616314
 Conc: 208.31 ng/ml

Instrument :
 ECD_O
 ClientSampleId :



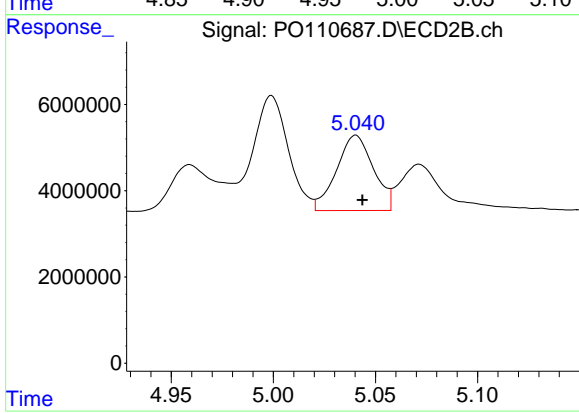
#13 AR-1232-3

R.T.: 4.959 min
 Delta R.T.: 0.000 min
 Response: 17047722
 Conc: 298.02 ng/ml



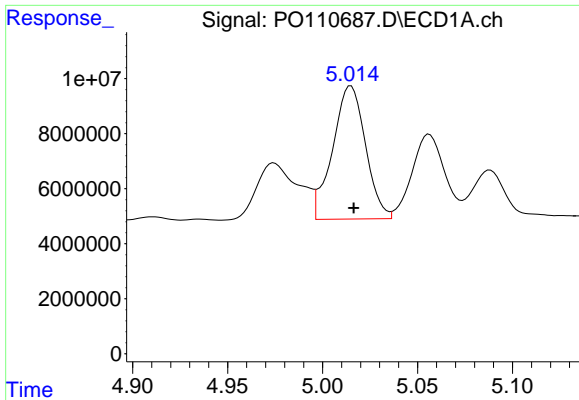
#14 AR-1232-4

R.T.: 4.974 min
 Delta R.T.: 0.000 min
 Response: 31480460
 Conc: 307.73 ng/ml



#14 AR-1232-4

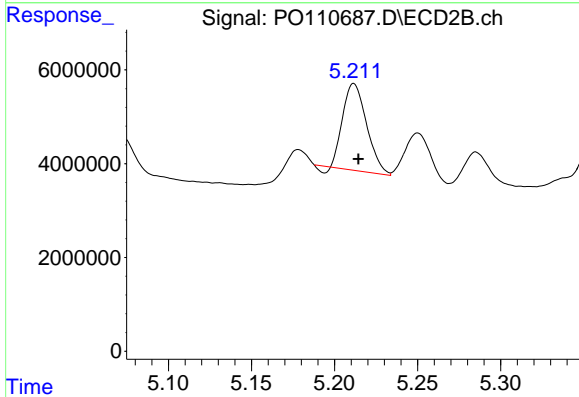
R.T.: 5.040 min
 Delta R.T.: -0.003 min
 Response: 21981352
 Conc: 407.41 ng/ml



#15 AR-1232-5

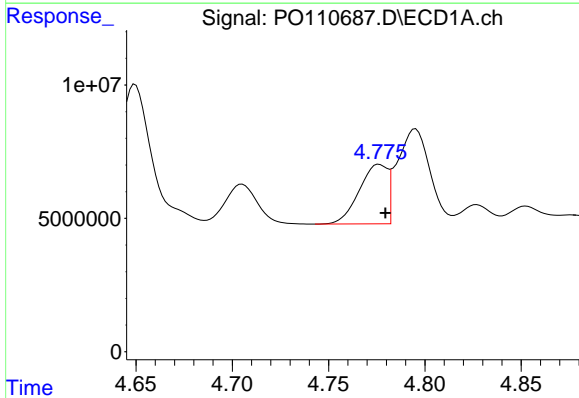
R.T.: 5.015 min
 Delta R.T.: -0.002 min
 Response: 58374292
 Conc: 847.20 ng/ml

Instrument :
 ECD_O
 ClientSampleId :



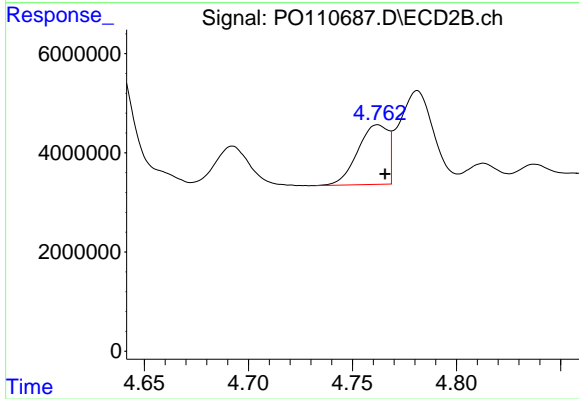
#15 AR-1232-5

R.T.: 5.212 min
 Delta R.T.: -0.003 min
 Response: 18205147
 Conc: 318.63 ng/ml



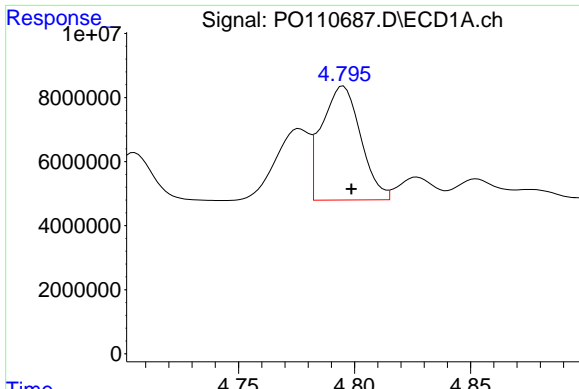
#16 AR-1242-1

R.T.: 4.776 min
 Delta R.T.: -0.003 min
 Response: 22816523
 Conc: 82.21 ng/ml



#16 AR-1242-1

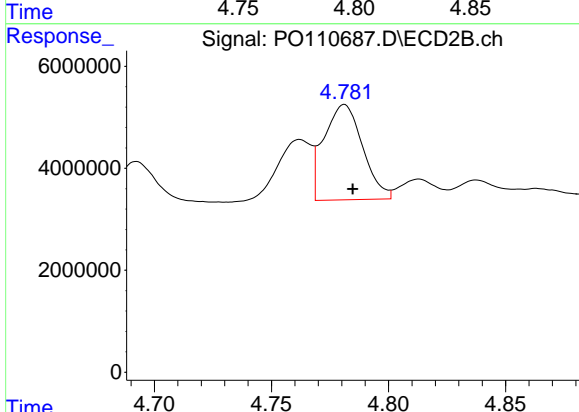
R.T.: 4.762 min
 Delta R.T.: -0.003 min
 Response: 12189999
 Conc: 81.54 ng/ml



#17 AR-1242-2

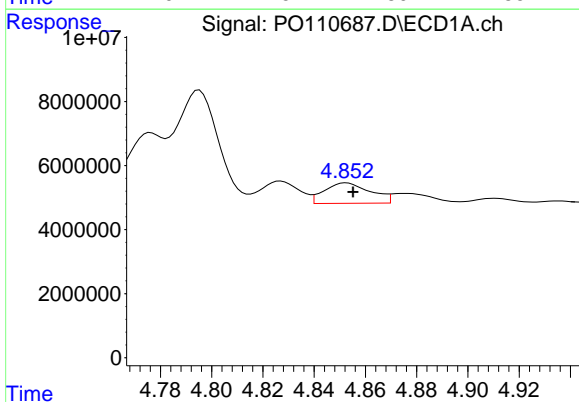
R.T.: 4.795 min
 Delta R.T.: -0.003 min
 Response: 41616314
 Conc: 107.88 ng/ml

Instrument :
 ECD_O
 ClientSampleId :



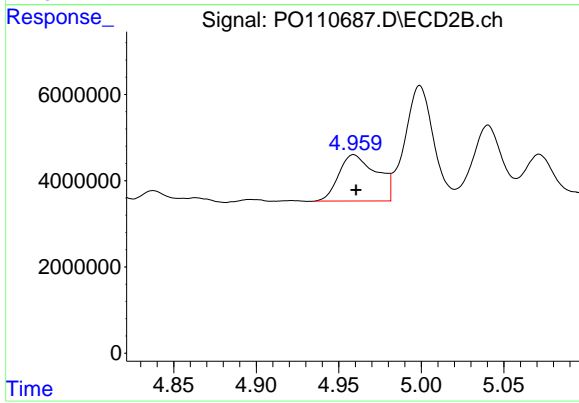
#17 AR-1242-2

R.T.: 4.781 min
 Delta R.T.: -0.004 min
 Response: 21551730
 Conc: 101.01 ng/ml



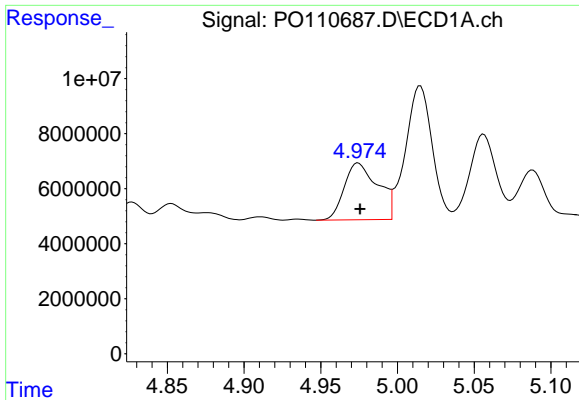
#18 AR-1242-3

R.T.: 4.853 min
 Delta R.T.: -0.003 min
 Response: 7952054
 Conc: 28.58 ng/ml



#18 AR-1242-3

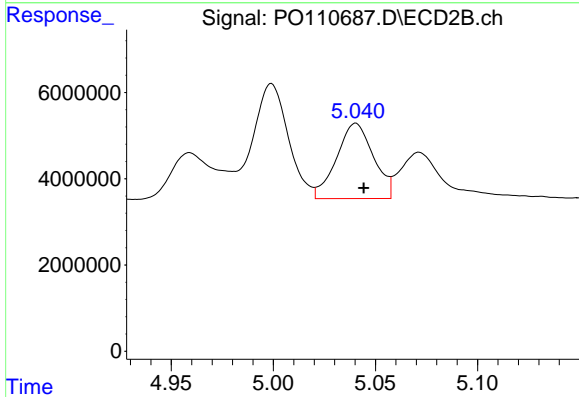
R.T.: 4.959 min
 Delta R.T.: -0.001 min
 Response: 17047722
 Conc: 147.49 ng/ml



#19 AR-1242-4

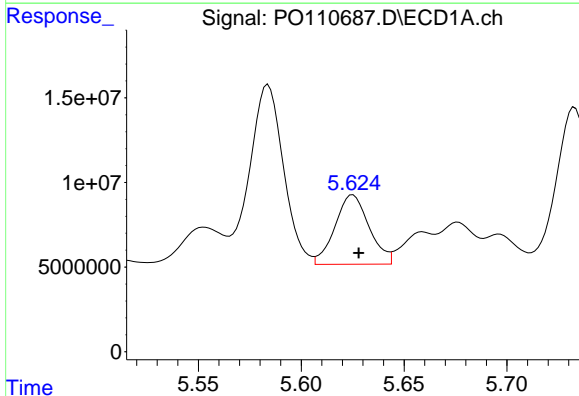
R.T.: 4.974 min
 Delta R.T.: -0.001 min
 Response: 31480460
 Conc: 148.94 ng/ml

Instrument :
 ECD_O
 ClientSampleId :



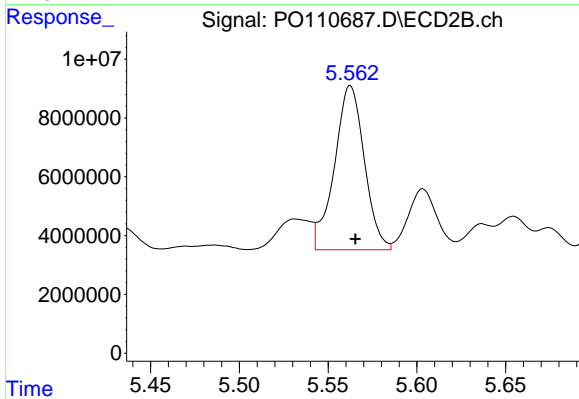
#19 AR-1242-4

R.T.: 5.040 min
 Delta R.T.: -0.004 min
 Response: 21981352
 Conc: 183.03 ng/ml



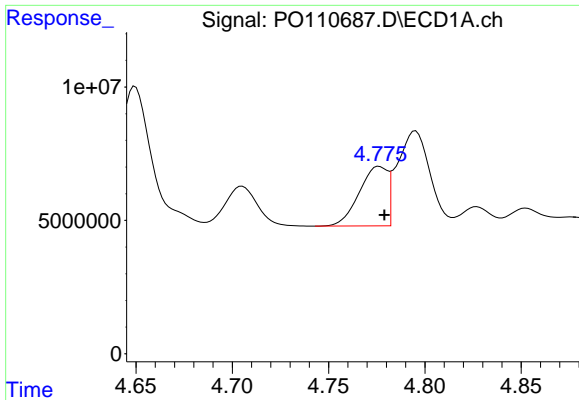
#20 AR-1242-5

R.T.: 5.625 min
 Delta R.T.: -0.003 min
 Response: 47571342
 Conc: 210.13 ng/ml



#20 AR-1242-5

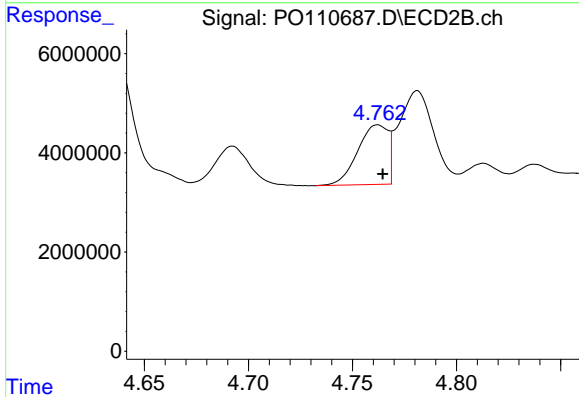
R.T.: 5.563 min
 Delta R.T.: -0.003 min
 Response: 65451234
 Conc: 451.09 ng/ml



#21 AR-1248-1

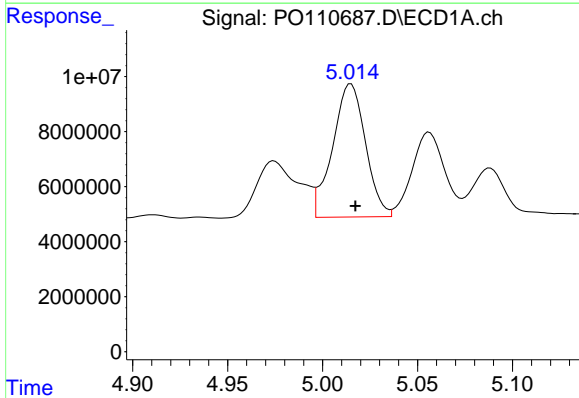
R.T.: 4.776 min
 Delta R.T.: -0.003 min
 Response: 22816523
 Conc: 107.20 ng/ml

Instrument :
 ECD_O
 ClientSampleId :



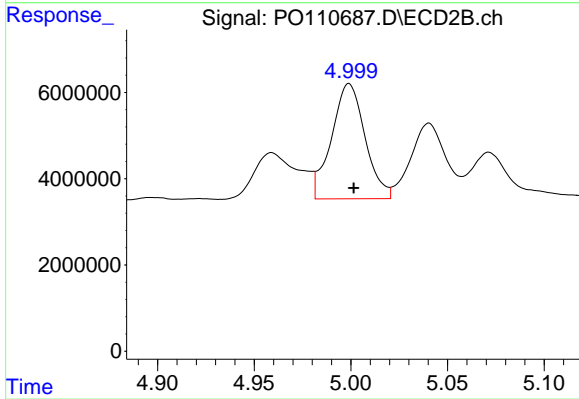
#21 AR-1248-1

R.T.: 4.762 min
 Delta R.T.: -0.002 min
 Response: 12189999
 Conc: 105.88 ng/ml



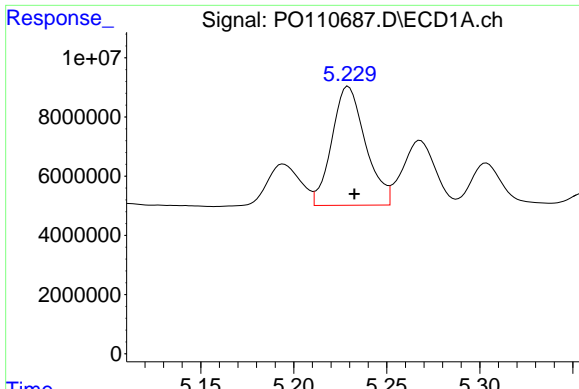
#22 AR-1248-2

R.T.: 5.015 min
 Delta R.T.: -0.002 min
 Response: 58374292
 Conc: 197.26 ng/ml



#22 AR-1248-2

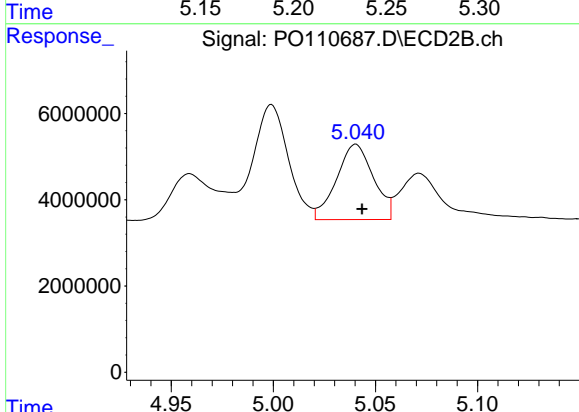
R.T.: 4.999 min
 Delta R.T.: -0.002 min
 Response: 32282158
 Conc: 198.19 ng/ml



#23 AR-1248-3

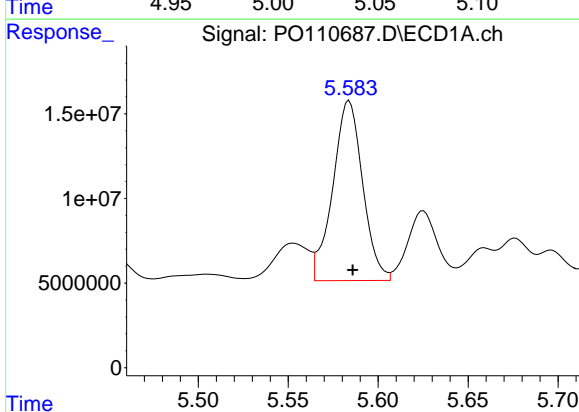
R.T.: 5.229 min
 Delta R.T.: -0.003 min
 Response: 50535623
 Conc: 136.60 ng/ml

Instrument :
 ECD_O
 ClientSampleId :



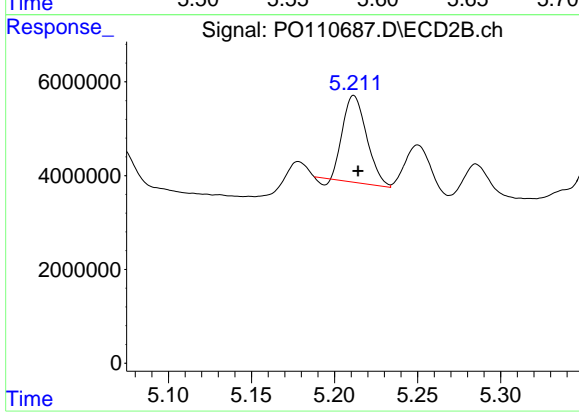
#23 AR-1248-3

R.T.: 5.040 min
 Delta R.T.: -0.003 min
 Response: 21981352
 Conc: 125.00 ng/ml



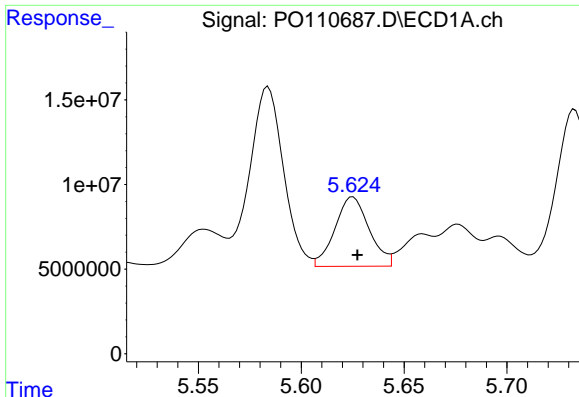
#24 AR-1248-4

R.T.: 5.584 min
 Delta R.T.: -0.002 min
 Response: 122975971
 Conc: 236.48 ng/ml



#24 AR-1248-4

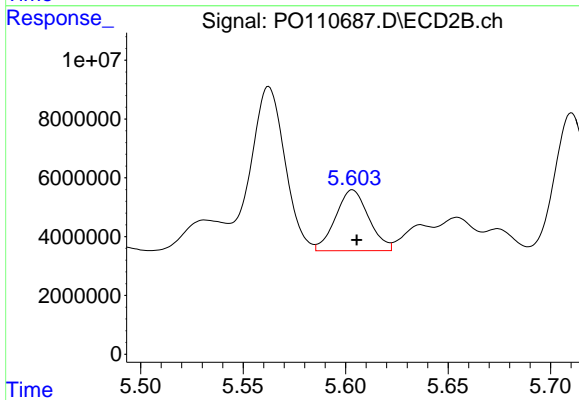
R.T.: 5.212 min
 Delta R.T.: -0.003 min
 Response: 18205147
 Conc: 89.38 ng/ml



#25 AR-1248-5

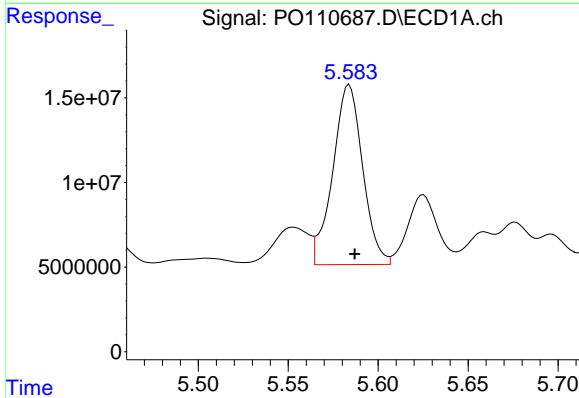
R.T.: 5.625 min
 Delta R.T.: -0.002 min
 Response: 47571342
 Conc: 128.77 ng/ml

Instrument :
 ECD_O
 ClientSampleId :



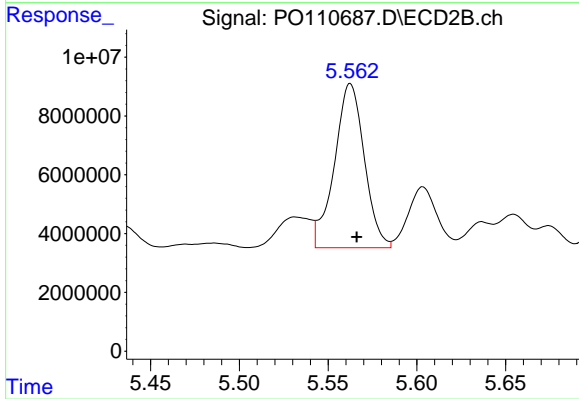
#25 AR-1248-5

R.T.: 5.603 min
 Delta R.T.: -0.002 min
 Response: 23340831
 Conc: 118.24 ng/ml



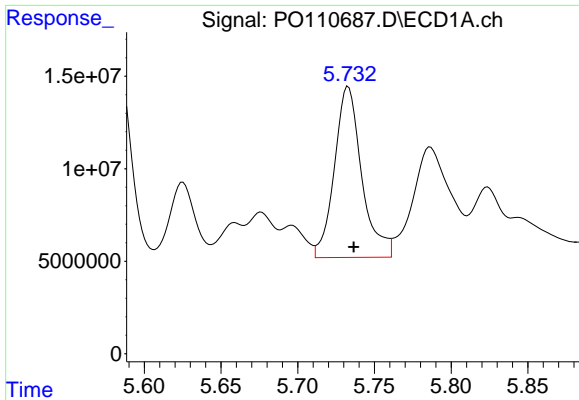
#26 AR-1254-1

R.T.: 5.584 min
 Delta R.T.: -0.003 min
 Response: 122975971
 Conc: 220.39 ng/ml



#26 AR-1254-1

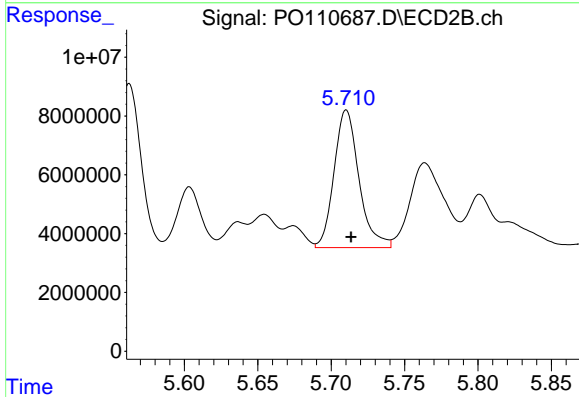
R.T.: 5.563 min
 Delta R.T.: -0.004 min
 Response: 65451234
 Conc: 217.09 ng/ml



#27 AR-1254-2

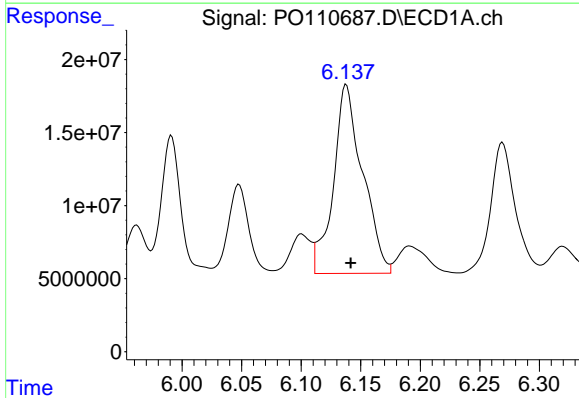
R.T.: 5.733 min
 Delta R.T.: -0.004 min
 Response: 114719434
 Conc: 236.19 ng/ml

Instrument :
 ECD_O
 ClientSampleId :



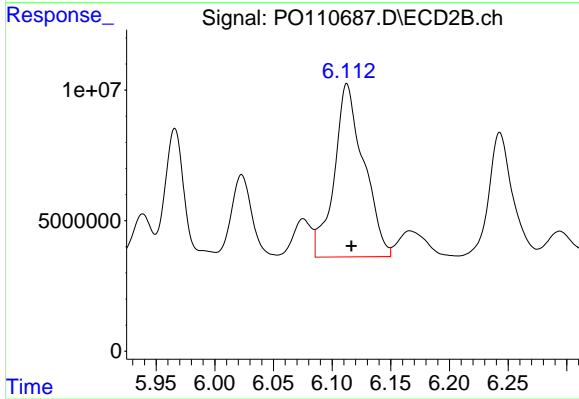
#27 AR-1254-2

R.T.: 5.710 min
 Delta R.T.: -0.003 min
 Response: 55346233
 Conc: 209.10 ng/ml



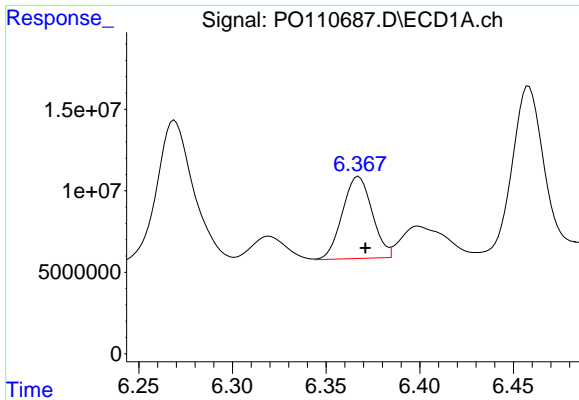
#28 AR-1254-3

R.T.: 6.138 min
 Delta R.T.: -0.004 min
 Response: 220486304
 Conc: 281.51 ng/ml



#28 AR-1254-3

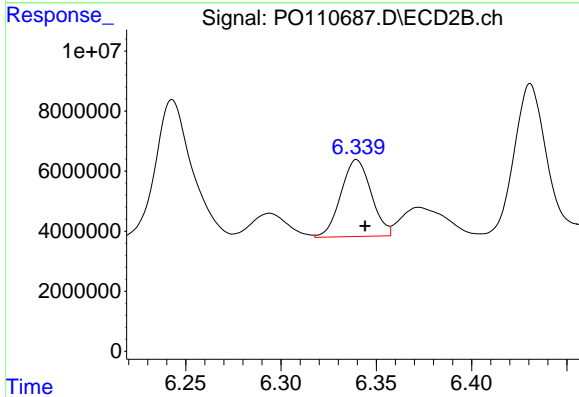
R.T.: 6.113 min
 Delta R.T.: -0.004 min
 Response: 116039626
 Conc: 287.64 ng/ml



#29 AR-1254-4

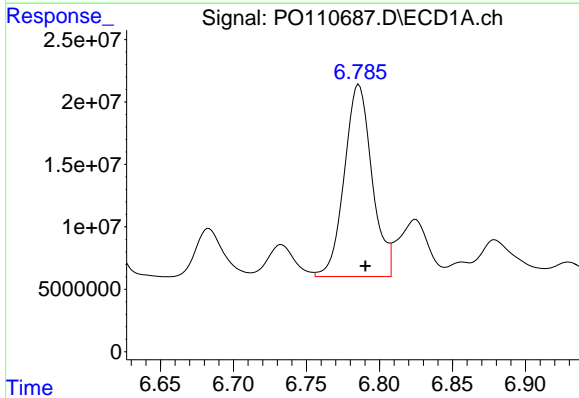
R.T.: 6.367 min
 Delta R.T.: -0.004 min
 Response: 55457157
 Conc: 113.73 ng/ml

Instrument :
 ECD_O
 ClientSampleId :



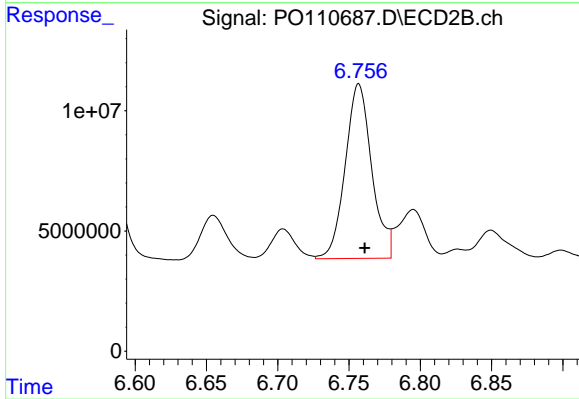
#29 AR-1254-4

R.T.: 6.340 min
 Delta R.T.: -0.005 min
 Response: 28314463
 Conc: 123.26 ng/ml



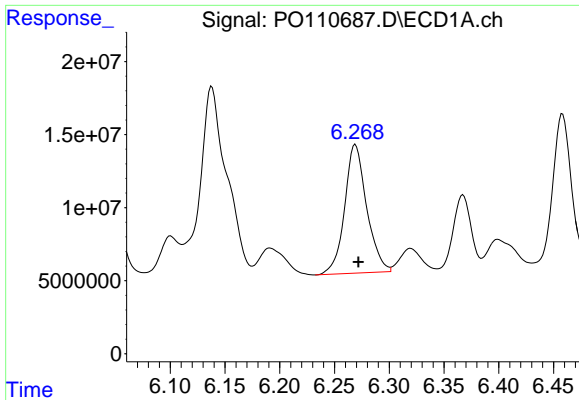
#30 AR-1254-5

R.T.: 6.786 min
 Delta R.T.: -0.004 min
 Response: 202801211
 Conc: 289.34 ng/ml



#30 AR-1254-5

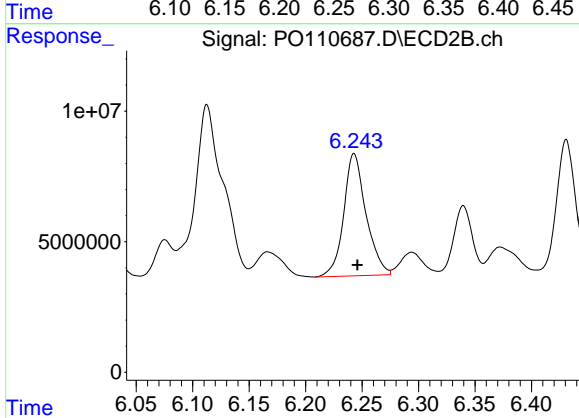
R.T.: 6.757 min
 Delta R.T.: -0.004 min
 Response: 94216849
 Conc: 283.54 ng/ml



#31 AR-1260-1

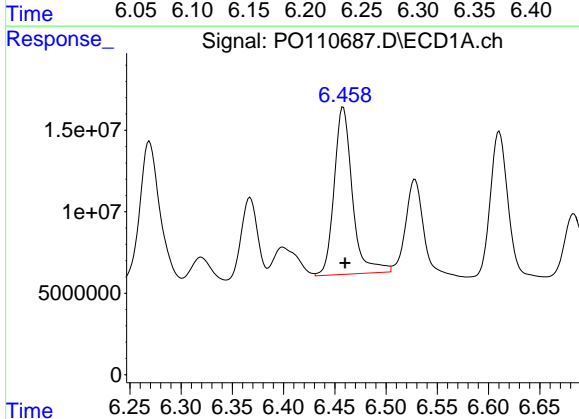
R.T.: 6.269 min
 Delta R.T.: -0.003 min
 Response: 123170048
 Conc: 260.71 ng/ml

Instrument :
 ECD_O
 ClientSampleId :



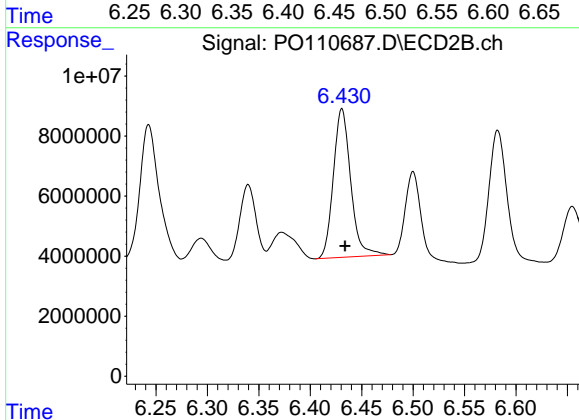
#31 AR-1260-1

R.T.: 6.243 min
 Delta R.T.: -0.003 min
 Response: 64323582
 Conc: 261.52 ng/ml



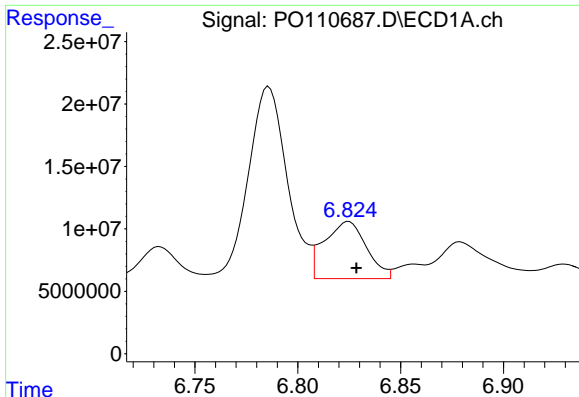
#32 AR-1260-2

R.T.: 6.458 min
 Delta R.T.: -0.002 min
 Response: 127213001
 Conc: 216.93 ng/ml



#32 AR-1260-2

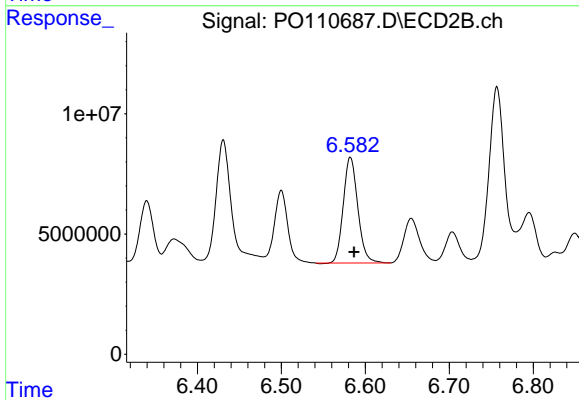
R.T.: 6.431 min
 Delta R.T.: -0.003 min
 Response: 58177558
 Conc: 199.41 ng/ml



#33 AR-1260-3

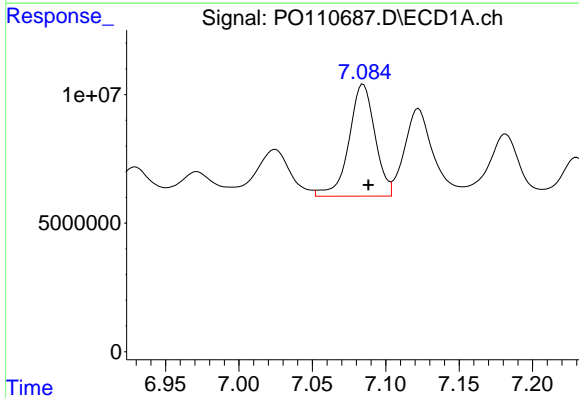
R.T.: 6.825 min
 Delta R.T.: -0.004 min
 Response: 65073144
 Conc: 132.03 ng/ml

Instrument :
 ECD_O
 ClientSampleId :



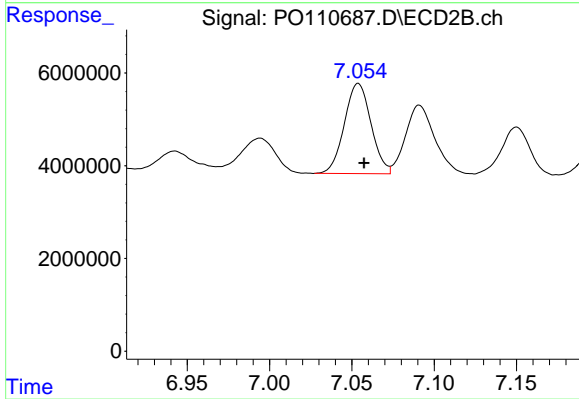
#33 AR-1260-3

R.T.: 6.582 min
 Delta R.T.: -0.004 min
 Response: 52744708
 Conc: 194.71 ng/ml



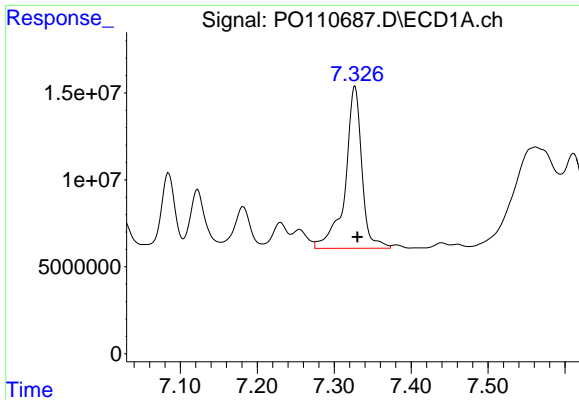
#34 AR-1260-4

R.T.: 7.085 min
 Delta R.T.: -0.004 min
 Response: 53749536
 Conc: 126.64 ng/ml



#34 AR-1260-4

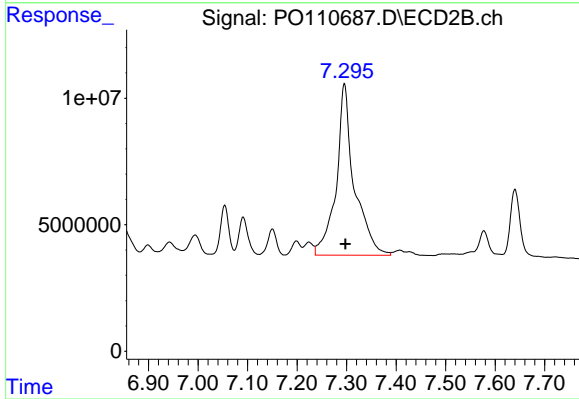
R.T.: 7.054 min
 Delta R.T.: -0.004 min
 Response: 21954696
 Conc: 109.42 ng/ml



#35 AR-1260-5

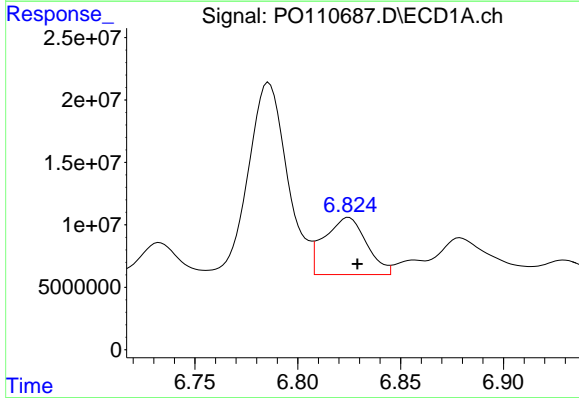
R.T.: 7.327 min
 Delta R.T.: -0.003 min
 Response: 139126936
 Conc: 133.33 ng/ml

Instrument :
 ECD_O
 ClientSampleId :



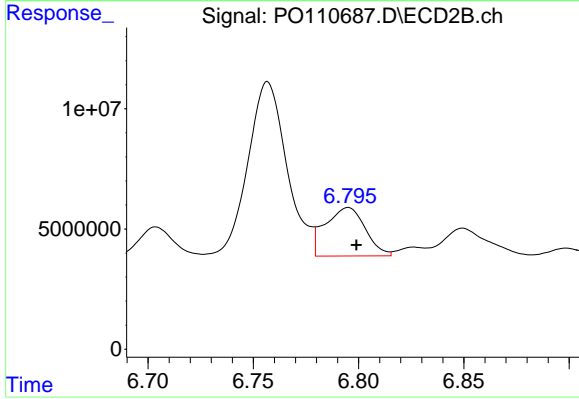
#35 AR-1260-5

R.T.: 7.296 min
 Delta R.T.: -0.002 min
 Response: 171516227
 Conc: 373.79 ng/ml



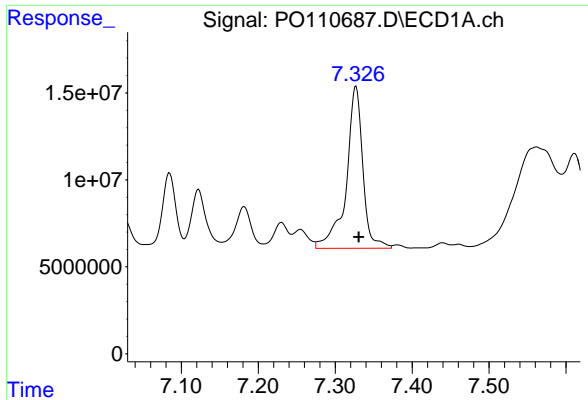
#36 AR-1262-1

R.T.: 6.825 min
 Delta R.T.: -0.004 min
 Response: 65073144
 Conc: 92.77 ng/ml



#36 AR-1262-1

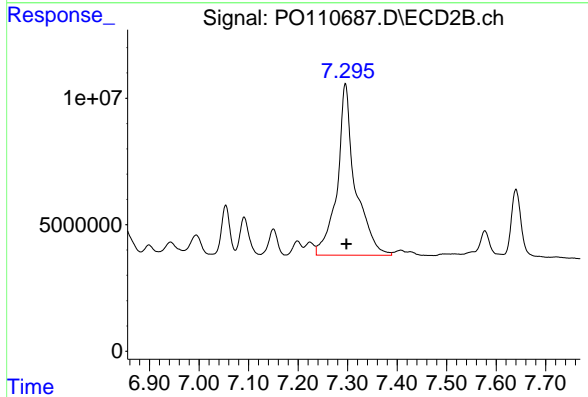
R.T.: 6.795 min
 Delta R.T.: -0.004 min
 Response: 26678888
 Conc: 81.01 ng/ml



#37 AR-1262-2

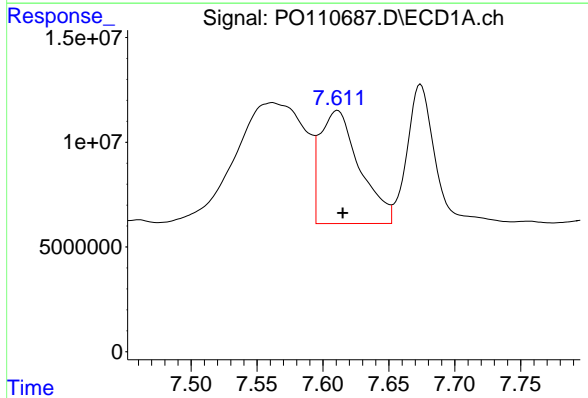
R.T.: 7.327 min
 Delta R.T.: -0.004 min
 Response: 139126936
 Conc: 115.20 ng/ml

Instrument :
 ECD_O
 ClientSampleId :



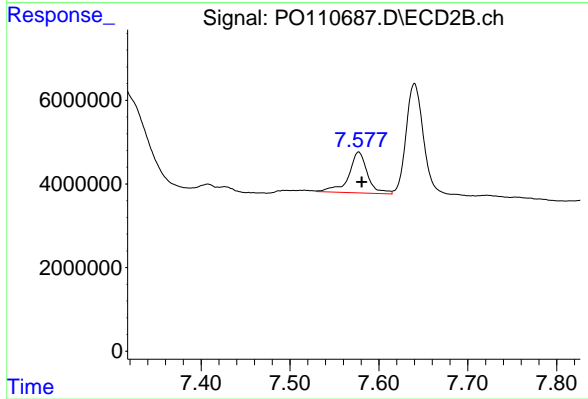
#37 AR-1262-2

R.T.: 7.296 min
 Delta R.T.: -0.002 min
 Response: 171516227
 Conc: 337.33 ng/ml



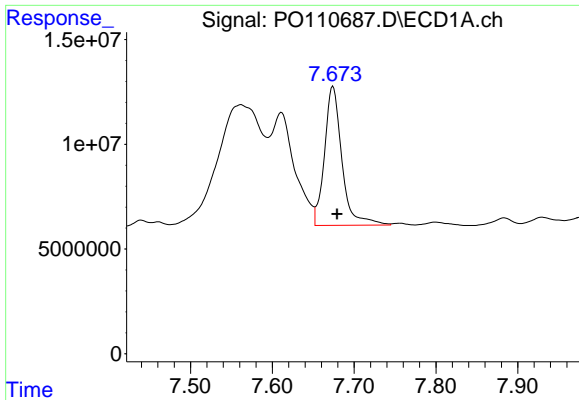
#38 AR-1262-3

R.T.: 7.611 min
 Delta R.T.: -0.004 min
 Response: 112772017
 Conc: 221.51 ng/ml



#38 AR-1262-3

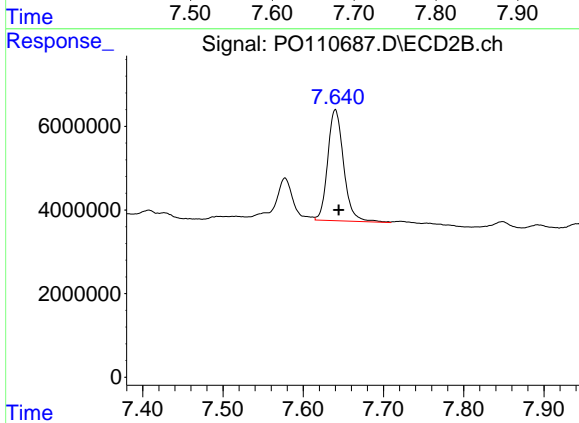
R.T.: 7.577 min
 Delta R.T.: -0.004 min
 Response: 14349580
 Conc: 74.11 ng/ml



#39 AR-1262-4

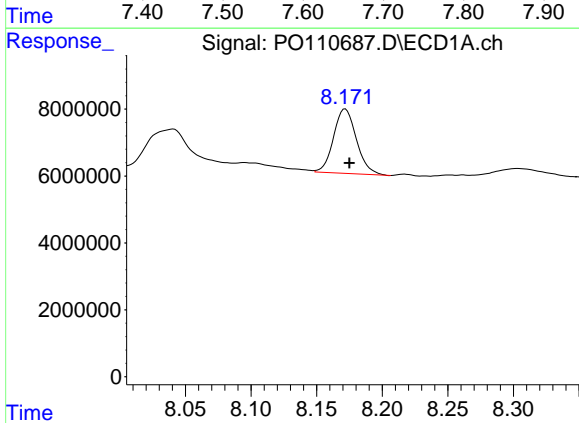
R.T.: 7.674 min
 Delta R.T.: -0.005 min
 Response: 98388258
 Conc: 109.77 ng/ml

Instrument :
 ECD_O
 ClientSampleId :



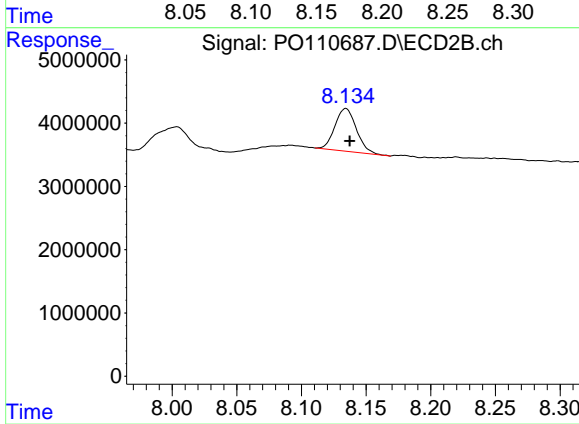
#39 AR-1262-4

R.T.: 7.640 min
 Delta R.T.: -0.004 min
 Response: 36463114
 Conc: 105.06 ng/ml



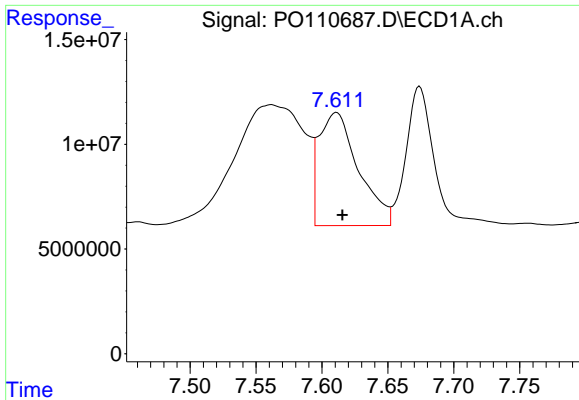
#40 AR-1262-5

R.T.: 8.172 min
 Delta R.T.: -0.003 min
 Response: 23524350
 Conc: 58.37 ng/ml



#40 AR-1262-5

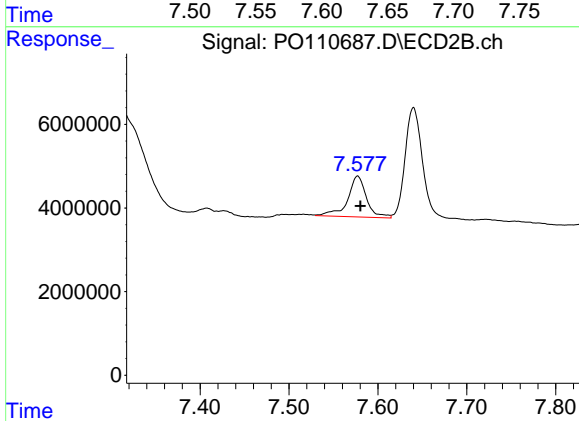
R.T.: 8.134 min
 Delta R.T.: -0.003 min
 Response: 7850394
 Conc: 63.01 ng/ml



#41 AR-1268-1

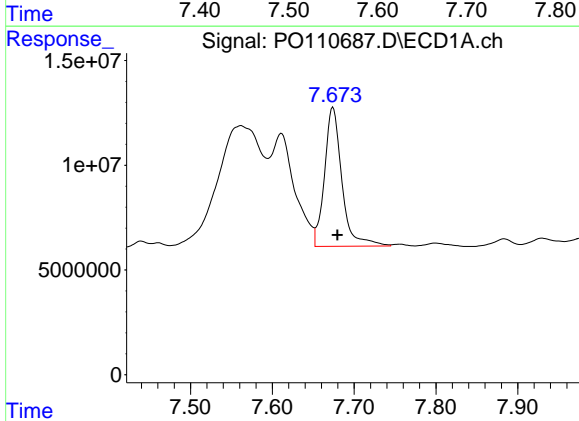
R.T.: 7.611 min
 Delta R.T.: -0.004 min
 Response: 112772017
 Conc: 80.31 ng/ml

Instrument :
 ECD_O
 ClientSampleId :



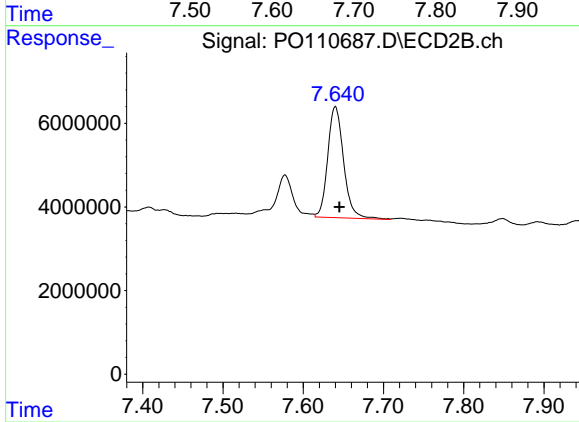
#41 AR-1268-1

R.T.: 7.577 min
 Delta R.T.: -0.003 min
 Response: 14349580
 Conc: 26.20 ng/ml



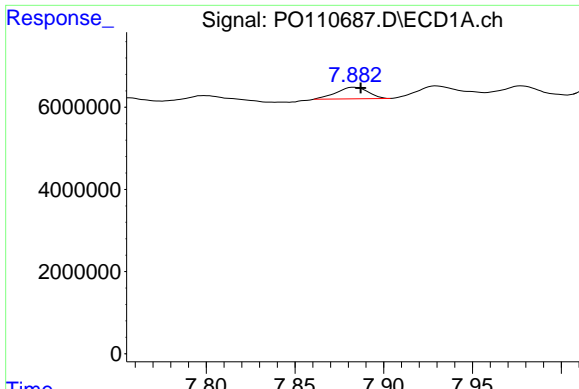
#42 AR-1268-2

R.T.: 7.674 min
 Delta R.T.: -0.006 min
 Response: 98388258
 Conc: 76.88 ng/ml



#42 AR-1268-2

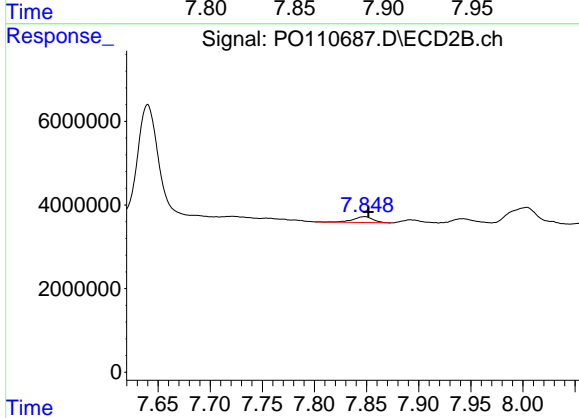
R.T.: 7.640 min
 Delta R.T.: -0.005 min
 Response: 36463114
 Conc: 73.29 ng/ml



#43 AR-1268-3

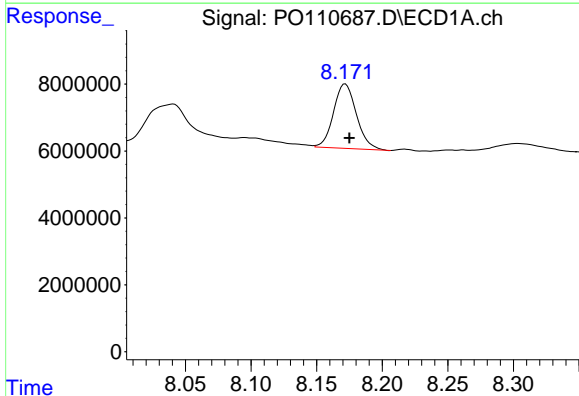
R.T.: 7.883 min
 Delta R.T.: -0.004 min
 Response: 3500804
 Conc: 3.36 ng/ml

Instrument :
 ECD_O
 ClientSampleId :



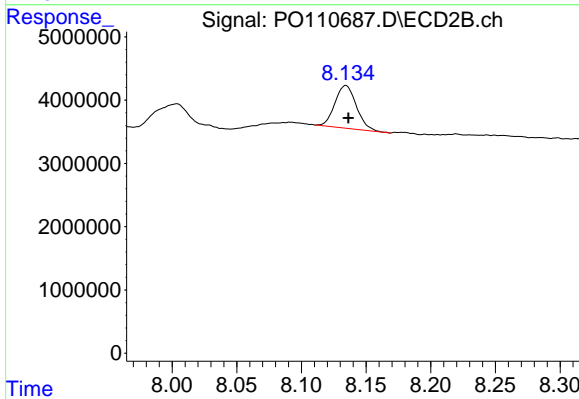
#43 AR-1268-3

R.T.: 7.848 min
 Delta R.T.: -0.004 min
 Response: 1862520
 Conc: 5.01 ng/ml



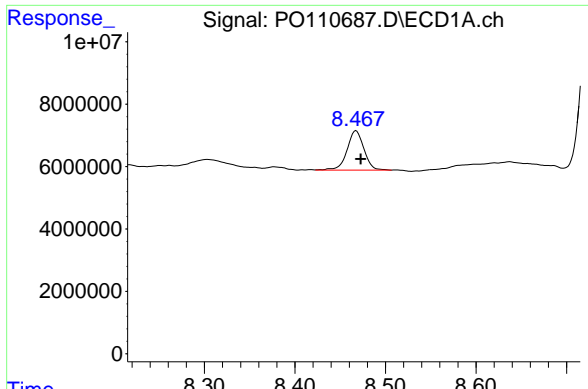
#44 AR-1268-4

R.T.: 8.172 min
 Delta R.T.: -0.003 min
 Response: 23524350
 Conc: 52.96 ng/ml



#44 AR-1268-4

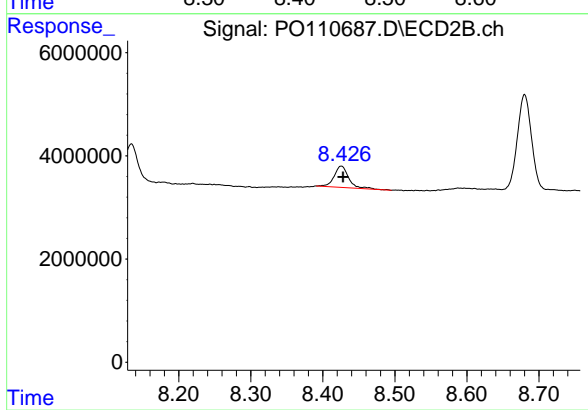
R.T.: 8.134 min
 Delta R.T.: -0.002 min
 Response: 7850394
 Conc: 55.62 ng/ml



#45 AR-1268-5

R.T.: 8.467 min
Delta R.T.: -0.005 min
Response: 16296975
Conc: 5.06 ng/ml

Instrument :
ECD_O
ClientSampleId :



#45 AR-1268-5

R.T.: 8.426 min
Delta R.T.: -0.003 min
Response: 5788772
Conc: 7.35 ng/ml