

Data Path : Z:\pestpcbsrv\HPCHEM1\ECD_O\Data\P0042425\
 Data File : PO110698.D
 Signal(s) : Signal #1: ECD1A.ch Signal #2: ECD2B.ch
 Acq On : 24 Apr 2025 20:44
 Operator : YP/AJ
 Sample : Q1860-25 20X
 Misc :
 ALS Vial : 22 Sample Multiplier: 1

Instrument :
 ECD_O
 ClientSampleId :

Integration File signal 1: autoint1.e
 Integration File signal 2: autoint2.e
 Quant Time: Apr 25 00:30:13 2025
 Quant Method : Z:\pestpcbsrv\HPCHEM1\ECD_O\methods\P0041025.M
 Quant Title : GC EXTRACTABLES
 QLast Update : Fri Apr 11 02:12:41 2025
 Response via : Initial Calibration
 Integrator: ChemStation

Volume Inj. : 2 µl
 Signal #1 Phase : ZB-MR1 Signal #2 Phase: ZB-MR2
 Signal #1 Info : 30Mx0.32mmx 0.50µ Signal #2 Info : 30M x 0.32mm x 0.25µm

| Compound | RT#1 | RT#2 | Resp#1 | Resp#2 | ng/ml | ng/ml |
|-----------------------------|-------|-------|----------|----------|---------|----------|
| ----- | | | | | | |
| System Monitoring Compounds | | | | | | |
| 1) SA Tetrachlo... | 3.686 | 3.683 | 7833201 | 4173032 | 0.895 | 0.836 |
| 2) SA Decachlor... | 8.728 | 8.678 | 7441984 | 1965304 | 0.943 | 1.021 |
| Target Compounds | | | | | | |
| 3) L1 AR-1016-1 | 4.778 | 4.763 | 1544605 | 958165 | 4.707 | 5.459 |
| 4) L1 AR-1016-2 | 4.795 | 4.781 | 3209151 | 1895576 | 7.054 | 7.538 |
| 5) L1 AR-1016-3 | 4.850 | 4.959 | 613139 | 677292 | 1.901 | 4.991 # |
| 6) L1 AR-1016-4 | 4.975 | 4.999 | 1791609 | 4427535 | 7.190 | 38.713 # |
| 7) L1 AR-1016-5 | 5.230 | 5.212 | 7329608 | 3480529 | 27.246 | 23.348 |
| 8) L2 AR-1221-1 | 3.887 | 3.879 | 890955 | 491150 | 7.548 | 7.356 |
| 9) L2 AR-1221-2 | 3.968 | 3.963 | 1783480 | 1187022 | 20.188 | 23.695 |
| 10) L2 AR-1221-3 | 4.061 | 4.053 | 573483 | 225437 | 2.180 | 1.511 # |
| 11) L3 AR-1232-1 | 4.061 | 4.053 | 573483 | 225437 | 2.800 | 1.960 # |
| 12) L3 AR-1232-2 | 4.551 | 4.781 | 1002716 | 1895576 | 9.397 | 17.098 # |
| 13) L3 AR-1232-3 | 4.795 | 4.959 | 3209151 | 677292 | 16.063 | 11.840 # |
| 14) L3 AR-1232-4 | 4.975 | 5.040 | 1791609 | 2514217 | 17.514 | 46.600 # |
| 15) L3 AR-1232-5 | 5.015 | 5.212 | 7921900 | 3480529 | 114.973 | 60.917 # |
| 16) L4 AR-1242-1 | 4.778 | 4.763 | 1544605 | 958165 | 5.565 | 6.409 |
| 17) L4 AR-1242-2 | 4.795 | 4.781 | 3209151 | 1895576 | 8.319 | 8.884 |
| 18) L4 AR-1242-3 | 4.850 | 4.959 | 613139 | 677292 | 2.204 | 5.860 # |
| 19) L4 AR-1242-4 | 4.975 | 5.040 | 1791609 | 2514217 | 8.476 | 20.934 # |
| 20) L4 AR-1242-5 | 5.625 | 5.563 | 9283934 | 12976585 | 41.008 | 89.434 # |
| 21) L5 AR-1248-1 | 4.778 | 4.763 | 1544605 | 958165 | 7.257 | 8.322 |
| 22) L5 AR-1248-2 | 5.015 | 4.999 | 7921900 | 4427535 | 26.770 | 27.182 |
| 23) L5 AR-1248-3 | 5.230 | 5.040 | 7329608 | 2514217 | 19.812 | 14.297 # |
| 24) L5 AR-1248-4 | 5.584 | 5.212 | 25447895 | 3480529 | 48.935 | 17.088 # |
| 25) L5 AR-1248-5 | 5.625 | 5.603 | 9283934 | 4655698 | 25.131 | 23.586 |
| 26) L6 AR-1254-1 | 5.584 | 5.563 | 25447895 | 12976585 | 45.606 | 43.040 |
| 27) L6 AR-1254-2 | 5.733 | 5.710 | 26148606 | 13233700 | 53.837 | 49.998 |
| 28) L6 AR-1254-3 | 6.138 | 6.112 | 50752355 | 25434874 | 64.799 | 63.049 |
| 29) L6 AR-1254-4 | 6.367 | 6.340 | 23026950 | 10368700 | 47.225 | 45.138 |
| 30) L6 AR-1254-5 | 6.786 | 6.756 | 69821388 | 33557724 | 99.617 | 100.989 |
| 31) L7 AR-1260-1 | 6.269 | 6.243 | 30082214 | 14754324 | 63.673 | 59.986 |
| 32) L7 AR-1260-2 | 6.458 | 6.430 | 31779600 | 13907743 | 54.192 | 47.670 |
| 33) L7 AR-1260-3 | 6.824 | 6.582 | 16186879 | 13390420 | 32.842 | 49.432 # |
| 34) L7 AR-1260-4 | 7.084 | 7.053 | 12278905 | 5885466 | 28.931 | 29.333 |
| 35) L7 AR-1260-5 | 7.327 | 7.295 | 34387570 | 20414634 | 32.955 | 44.490 # |
| 36) L8 AR-1262-1 | 6.824 | 6.794 | 16186879 | 7027531 | 23.076 | 21.338 |
| 37) L8 AR-1262-2 | 7.327 | 7.295 | 34387570 | 20414634 | 28.473 | 40.150 # |
| 38) L8 AR-1262-3 | 7.612 | 7.578 | 9893640 | 3273582 | 19.433 | 16.906 |
| 39) L8 AR-1262-4 | 7.673 | 7.640 | 24517861 | 10048706 | 27.355 | 28.954 |
| 40) L8 AR-1262-5 | 8.172 | 8.134 | 7242146 | 2333388 | 17.971 | 18.728 |
| 41) L9 AR-1268-1 | 7.612 | 7.578 | 9893640 | 3273582 | 7.046 | 5.977 |

Data Path : Z:\pestpcbsrv\HPCHEM1\ECD_0\Data\P0042425\
 Data File : P0110698.D
 Signal(s) : Signal #1: ECD1A.ch Signal #2: ECD2B.ch
 Acq On : 24 Apr 2025 20:44
 Operator : YP/AJ
 Sample : Q1860-25 20X
 Misc :
 ALS Vial : 22 Sample Multiplier: 1

Instrument :
 ECD_0
 ClientSampleId :

Integration File signal 1: autoint1.e
 Integration File signal 2: autoint2.e
 Quant Time: Apr 25 00:30:13 2025
 Quant Method : Z:\pestpcbsrv\HPCHEM1\ECD_0\methods\P0041025.M
 Quant Title : GC EXTRACTABLES
 QLast Update : Fri Apr 11 02:12:41 2025
 Response via : Initial Calibration
 Integrator: ChemStation

Volume Inj. : 2 µl
 Signal #1 Phase : ZB-MR1 Signal #2 Phase: ZB-MR2
 Signal #1 Info : 30Mx0.32mmx 0.50µ Signal #2 Info : 30M x 0.32mm x 0.25µm

| | Compound | RT#1 | RT#2 | Resp#1 | Resp#2 | ng/ml | ng/ml |
|-----|--------------|-------|-------|----------|----------|--------|---------|
| 42) | L9 AR-1268-2 | 7.673 | 7.640 | 24517861 | 10048706 | 19.158 | 20.199 |
| 43) | L9 AR-1268-3 | 7.885 | 7.845 | 604316 | 353733 | 0.579 | 0.952 # |
| 44) | L9 AR-1268-4 | 8.172 | 8.134 | 7242146 | 2333388 | 16.305 | 16.533 |
| 45) | L9 AR-1268-5 | 8.468 | 8.425 | 3166974 | 864058 | 0.984 | 1.098 |

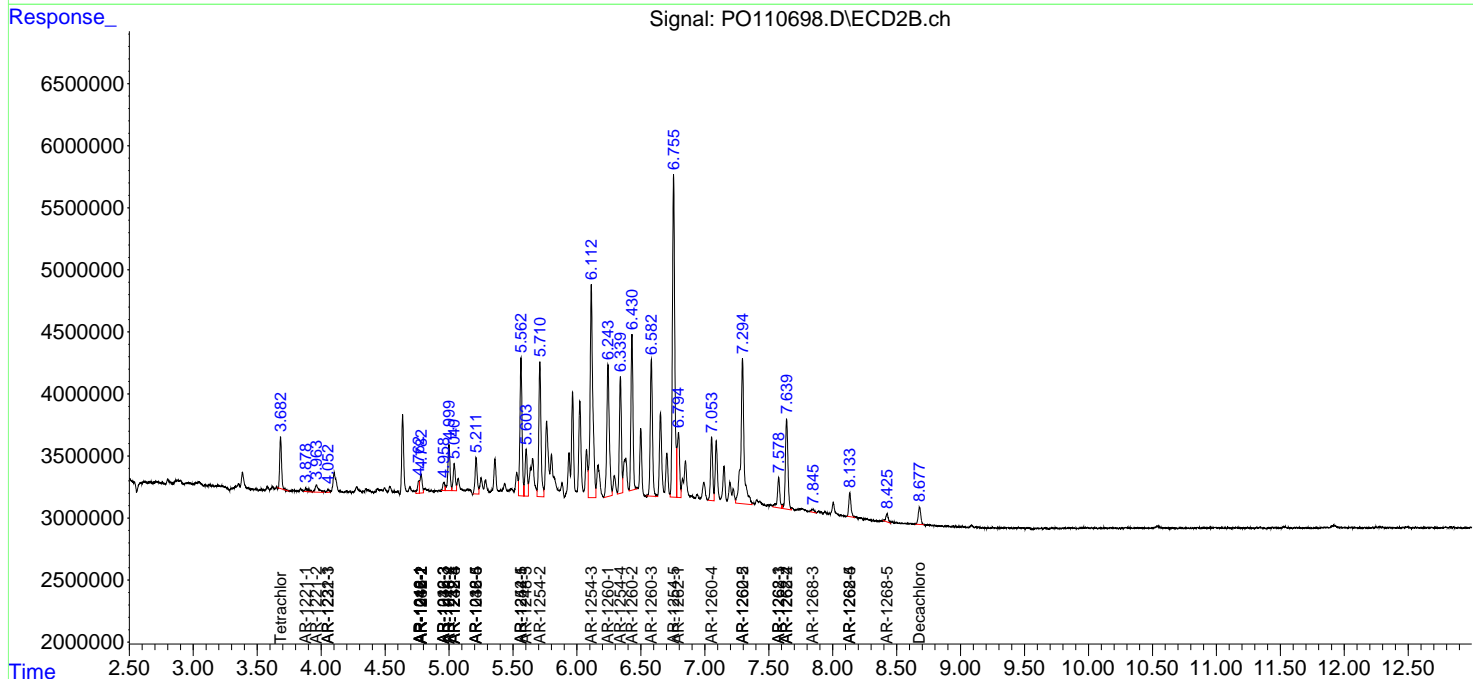
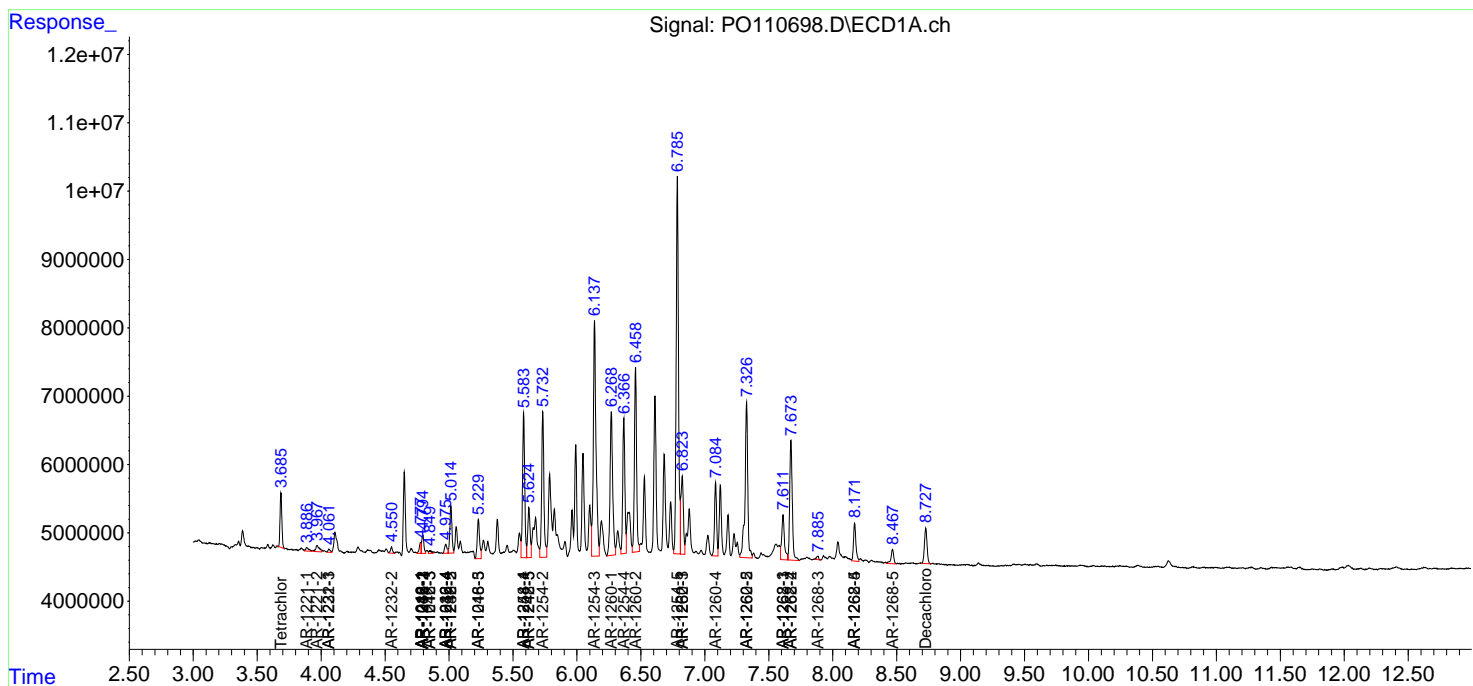
(f)=RT Delta > 1/2 Window (#)=Amounts differ by > 25% (m)=manual int.

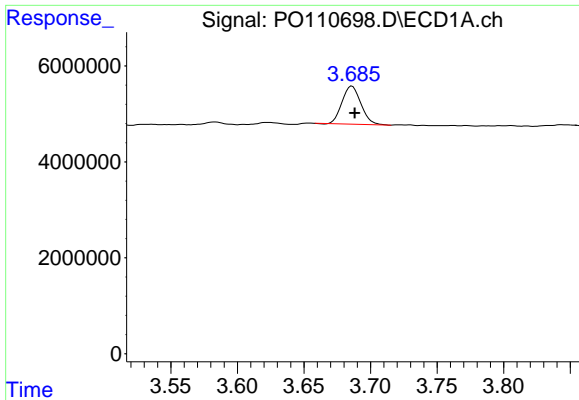
Data Path : Z:\pestpcbsrv\HPCHEM1\ECD_O\Data\P0042425\
 Data File : P0110698.D
 Signal(s) : Signal #1: ECD1A.ch Signal #2: ECD2B.ch
 Acq On : 24 Apr 2025 20:44
 Operator : YP/AJ
 Sample : Q1860-25 20X
 Misc :
 ALS Vial : 22 Sample Multiplier: 1

Instrument :
 ECD_O
 ClientSampleId :

Integration File signal 1: autoint1.e
 Integration File signal 2: autoint2.e
 Quant Time: Apr 25 00:30:13 2025
 Quant Method : Z:\pestpcbsrv\HPCHEM1\ECD_O\methods\P0041025.M
 Quant Title : GC EXTRACTABLES
 QLast Update : Fri Apr 11 02:12:41 2025
 Response via : Initial Calibration
 Integrator: ChemStation

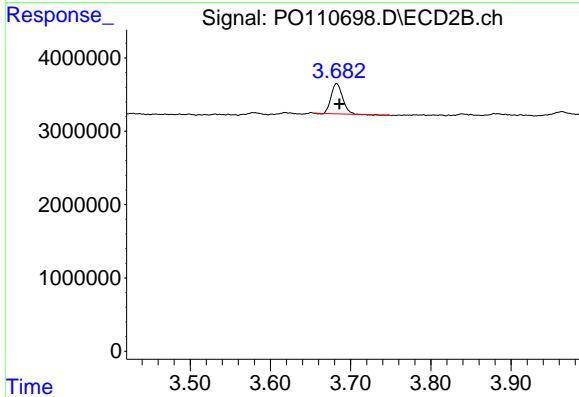
Volume Inj. : 2 µl
 Signal #1 Phase : ZB-MR1 Signal #2 Phase: ZB-MR2
 Signal #1 Info : 30Mx0.32mmx 0.50µ Signal #2 Info : 30M x 0.32mm x 0.25µm



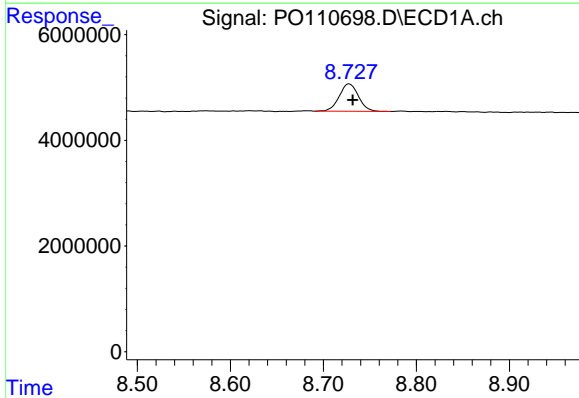


#1 Tetrachloro-m-xylene
 R.T.: 3.686 min
 Delta R.T.: -0.002 min
 Response: 7833201
 Conc: 0.90 ng/ml

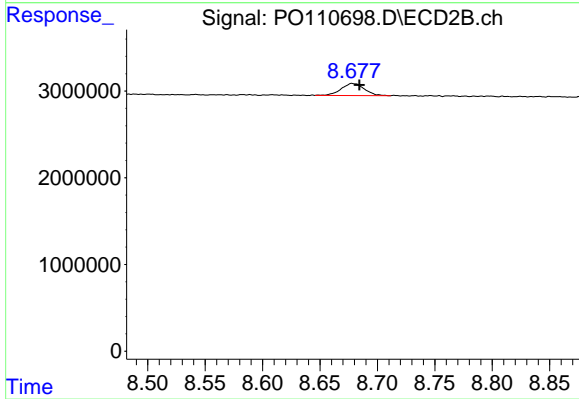
Instrument :
 ECD_O
 ClientSampleId :



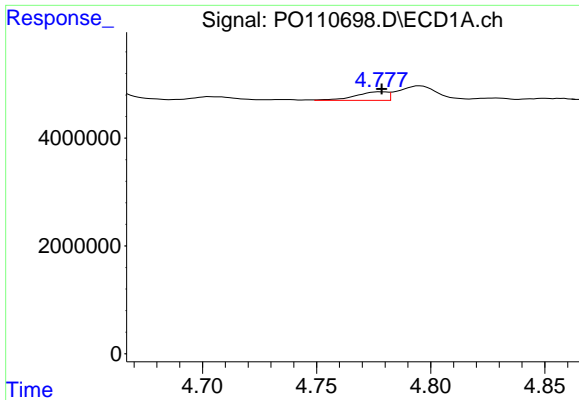
#1 Tetrachloro-m-xylene
 R.T.: 3.683 min
 Delta R.T.: -0.003 min
 Response: 4173032
 Conc: 0.84 ng/ml



#2 Decachlorobiphenyl
 R.T.: 8.728 min
 Delta R.T.: -0.004 min
 Response: 7441984
 Conc: 0.94 ng/ml



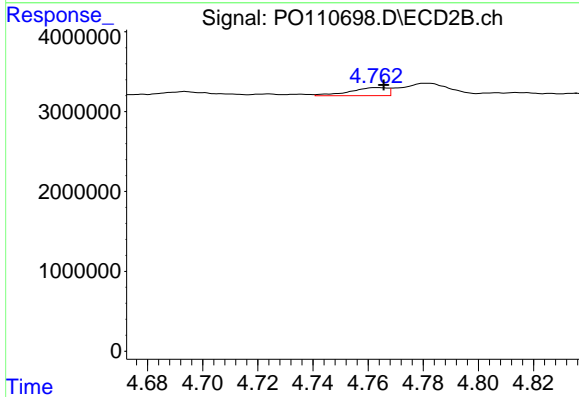
#2 Decachlorobiphenyl
 R.T.: 8.678 min
 Delta R.T.: -0.006 min
 Response: 1965304
 Conc: 1.02 ng/ml



#3 AR-1016-1

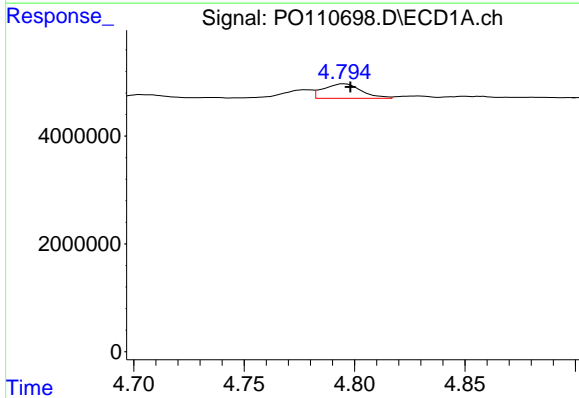
R.T.: 4.778 min
 Delta R.T.: 0.000 min
 Response: 1544605
 Conc: 4.71 ng/ml

Instrument :
 ECD_O
 ClientSampleId :



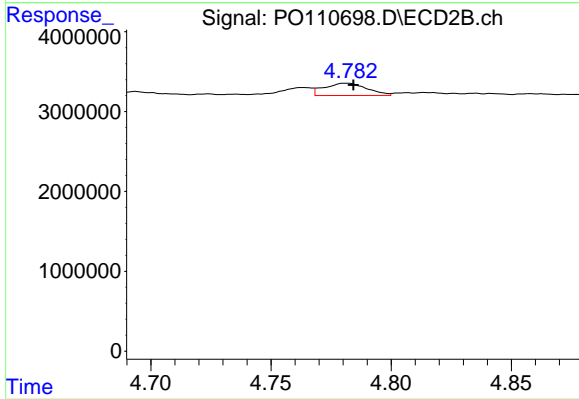
#3 AR-1016-1

R.T.: 4.763 min
 Delta R.T.: -0.002 min
 Response: 958165
 Conc: 5.46 ng/ml



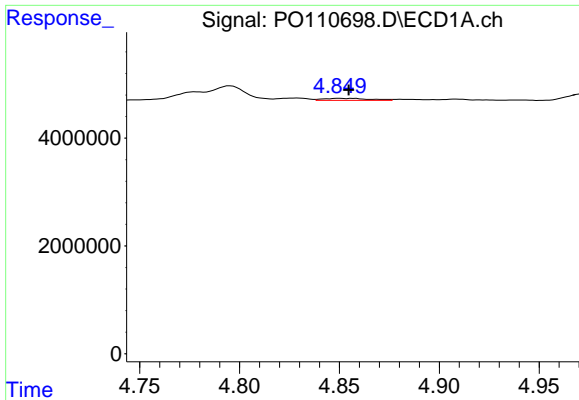
#4 AR-1016-2

R.T.: 4.795 min
 Delta R.T.: -0.003 min
 Response: 3209151
 Conc: 7.05 ng/ml



#4 AR-1016-2

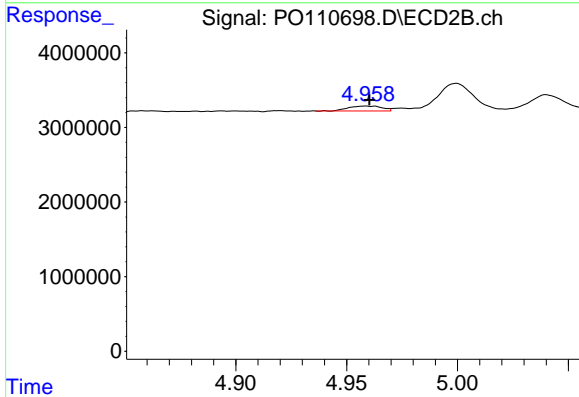
R.T.: 4.781 min
 Delta R.T.: -0.003 min
 Response: 1895576
 Conc: 7.54 ng/ml



#5 AR-1016-3

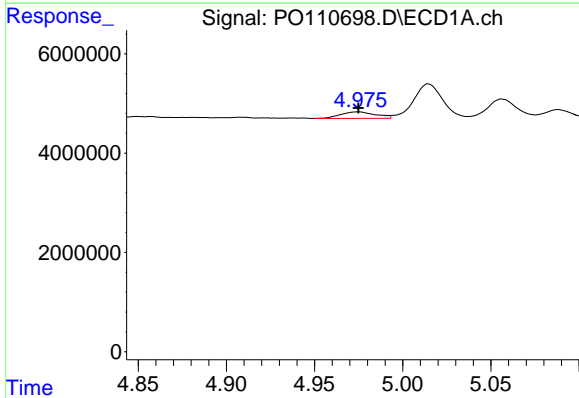
R.T.: 4.850 min
 Delta R.T.: -0.005 min
 Response: 613139
 Conc: 1.90 ng/ml

Instrument :
 ECD_O
 ClientSampleId :



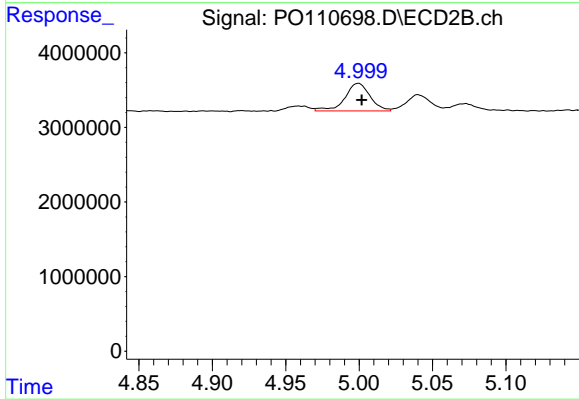
#5 AR-1016-3

R.T.: 4.959 min
 Delta R.T.: -0.002 min
 Response: 677292
 Conc: 4.99 ng/ml



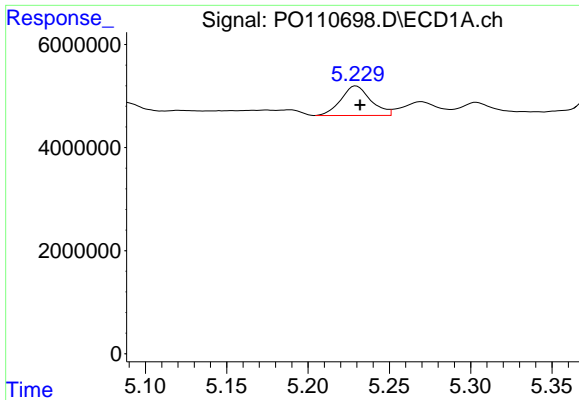
#6 AR-1016-4

R.T.: 4.975 min
 Delta R.T.: 0.000 min
 Response: 1791609
 Conc: 7.19 ng/ml



#6 AR-1016-4

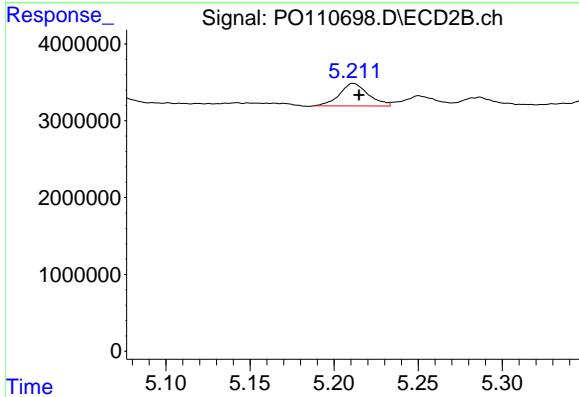
R.T.: 4.999 min
 Delta R.T.: -0.002 min
 Response: 4427535
 Conc: 38.71 ng/ml



#7 AR-1016-5

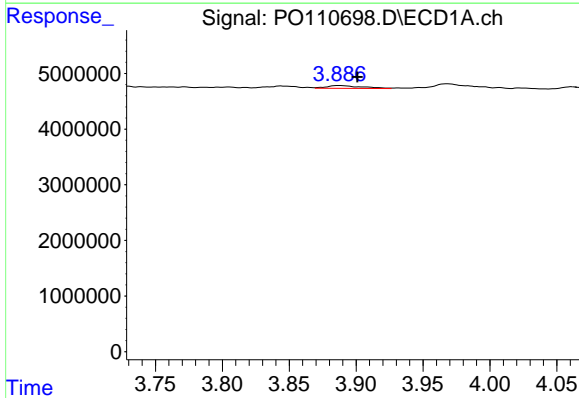
R.T.: 5.230 min
 Delta R.T.: -0.002 min
 Response: 7329608
 Conc: 27.25 ng/ml

Instrument :
 ECD_O
 ClientSampleId :



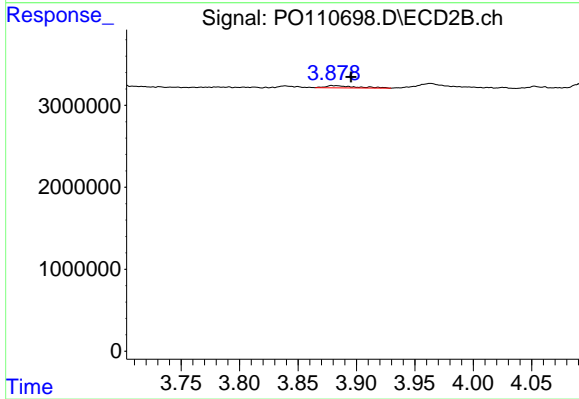
#7 AR-1016-5

R.T.: 5.212 min
 Delta R.T.: -0.003 min
 Response: 3480529
 Conc: 23.35 ng/ml



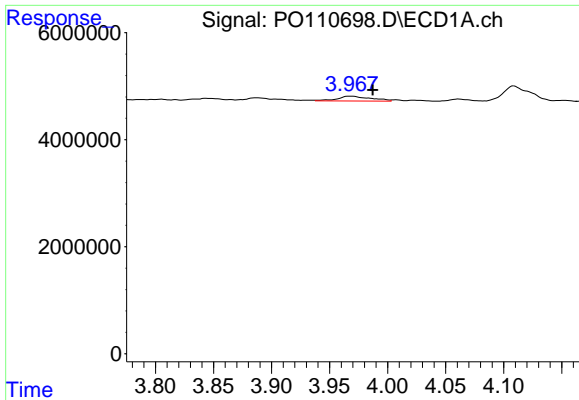
#8 AR-1221-1

R.T.: 3.887 min
 Delta R.T.: -0.014 min
 Response: 890955
 Conc: 7.55 ng/ml



#8 AR-1221-1

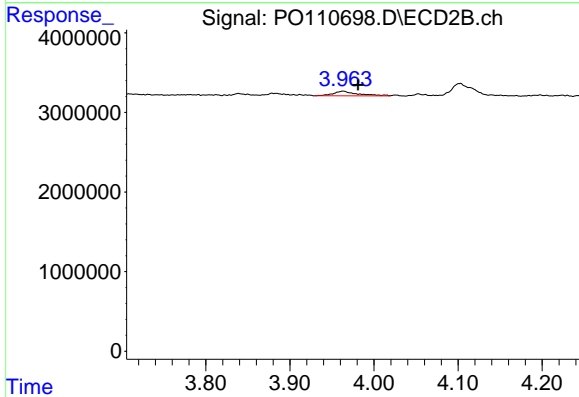
R.T.: 3.879 min
 Delta R.T.: -0.016 min
 Response: 491150
 Conc: 7.36 ng/ml



#9 AR-1221-2

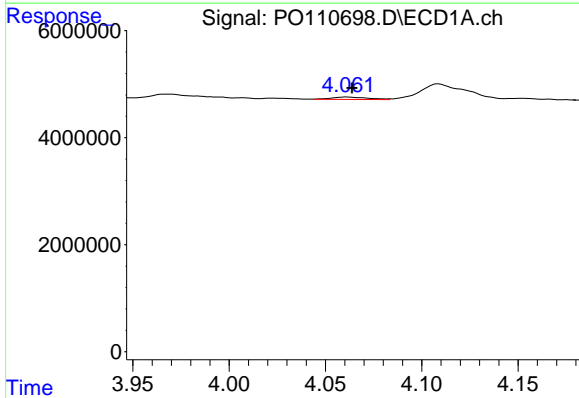
R.T.: 3.968 min
 Delta R.T.: -0.019 min
 Response: 1783480
 Conc: 20.19 ng/ml

Instrument :
 ECD_O
 ClientSampleId :



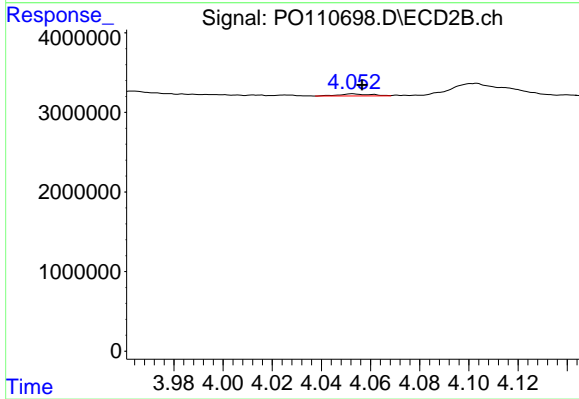
#9 AR-1221-2

R.T.: 3.963 min
 Delta R.T.: -0.017 min
 Response: 1187022
 Conc: 23.69 ng/ml



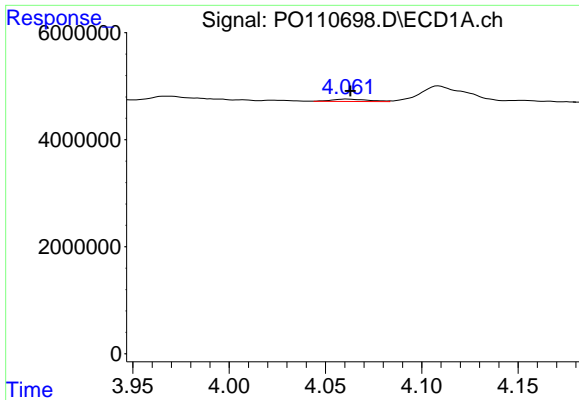
#10 AR-1221-3

R.T.: 4.061 min
 Delta R.T.: -0.002 min
 Response: 573483
 Conc: 2.18 ng/ml



#10 AR-1221-3

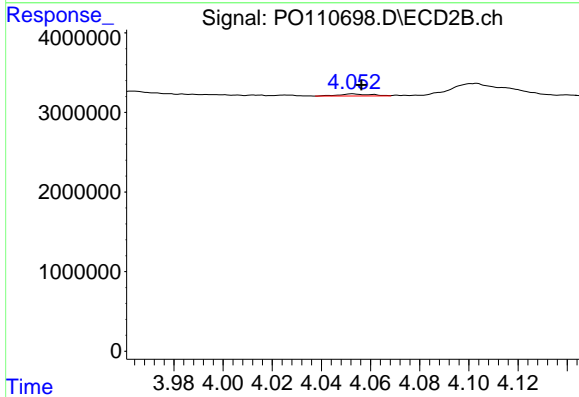
R.T.: 4.053 min
 Delta R.T.: -0.004 min
 Response: 225437
 Conc: 1.51 ng/ml



#11 AR-1232-1

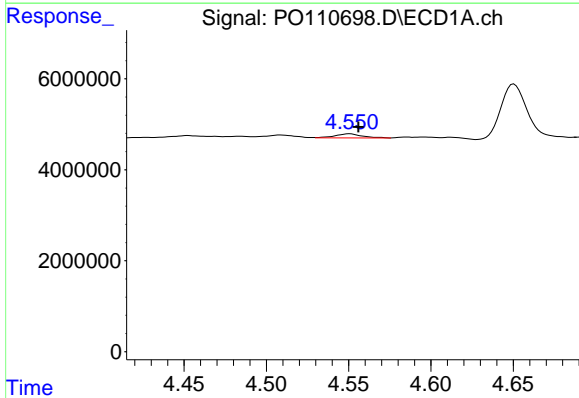
R.T.: 4.061 min
 Delta R.T.: -0.002 min
 Response: 573483
 Conc: 2.80 ng/ml

Instrument :
 ECD_O
 ClientSampleId :



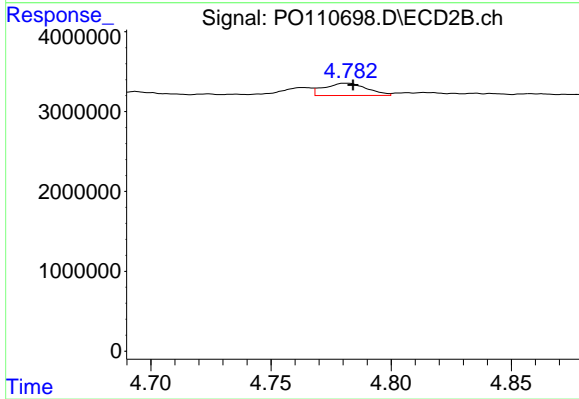
#11 AR-1232-1

R.T.: 4.053 min
 Delta R.T.: -0.004 min
 Response: 225437
 Conc: 1.96 ng/ml



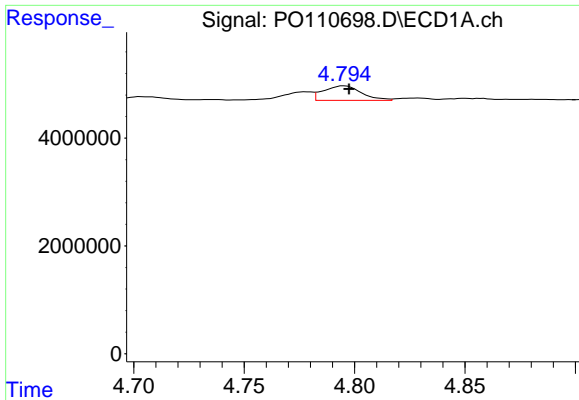
#12 AR-1232-2

R.T.: 4.551 min
 Delta R.T.: -0.005 min
 Response: 1002716
 Conc: 9.40 ng/ml



#12 AR-1232-2

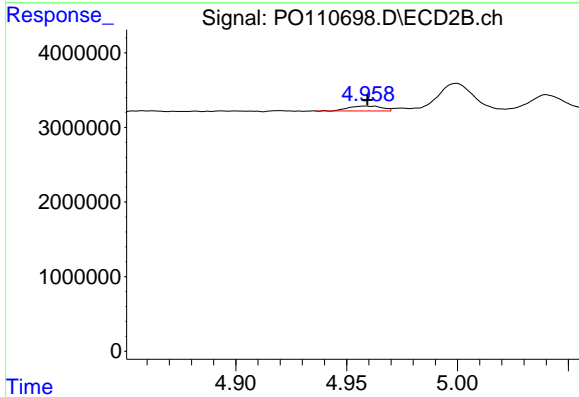
R.T.: 4.781 min
 Delta R.T.: -0.003 min
 Response: 1895576
 Conc: 17.10 ng/ml



#13 AR-1232-3

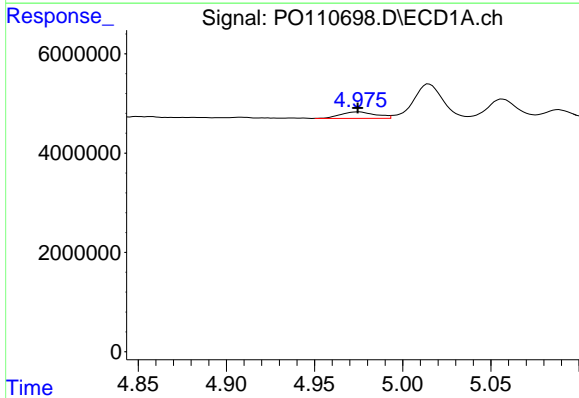
R.T.: 4.795 min
 Delta R.T.: -0.002 min
 Response: 3209151
 Conc: 16.06 ng/ml

Instrument :
 ECD_O
 ClientSampleId :



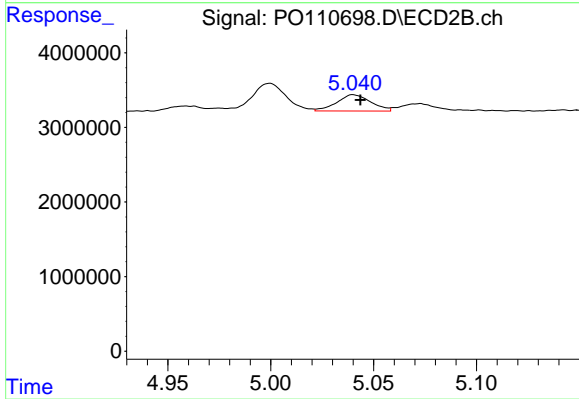
#13 AR-1232-3

R.T.: 4.959 min
 Delta R.T.: 0.000 min
 Response: 677292
 Conc: 11.84 ng/ml



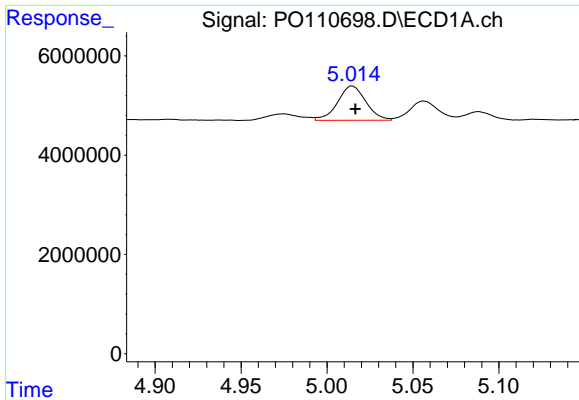
#14 AR-1232-4

R.T.: 4.975 min
 Delta R.T.: 0.000 min
 Response: 1791609
 Conc: 17.51 ng/ml



#14 AR-1232-4

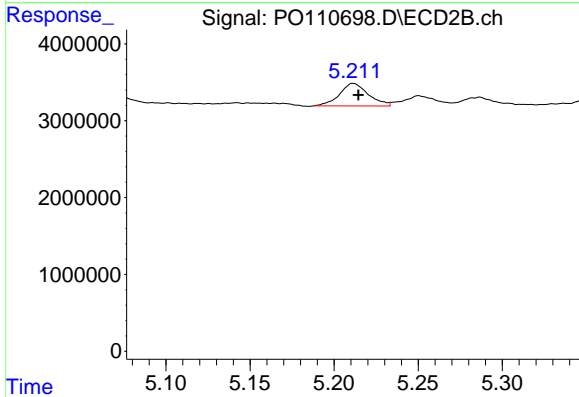
R.T.: 5.040 min
 Delta R.T.: -0.003 min
 Response: 2514217
 Conc: 46.60 ng/ml



#15 AR-1232-5

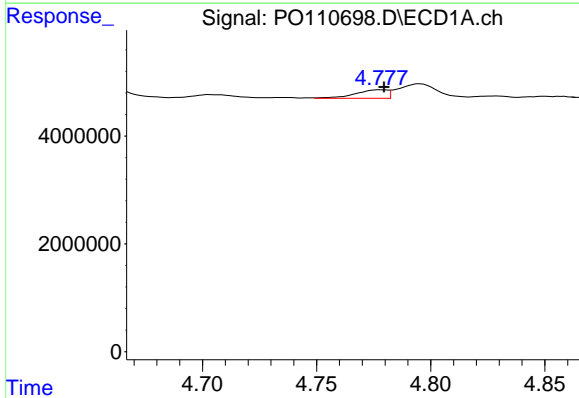
R.T.: 5.015 min
 Delta R.T.: -0.002 min
 Response: 7921900
 Conc: 114.97 ng/ml

Instrument :
 ECD_O
 ClientSampleId :



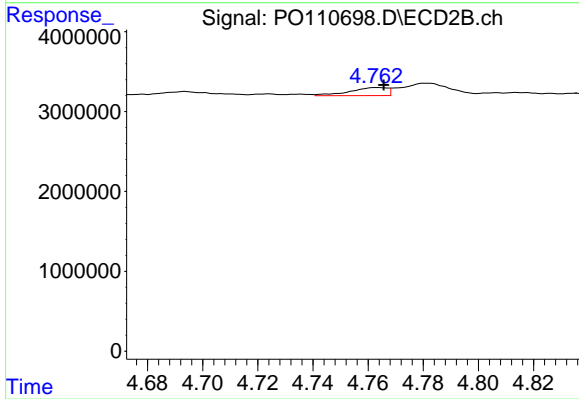
#15 AR-1232-5

R.T.: 5.212 min
 Delta R.T.: -0.003 min
 Response: 3480529
 Conc: 60.92 ng/ml



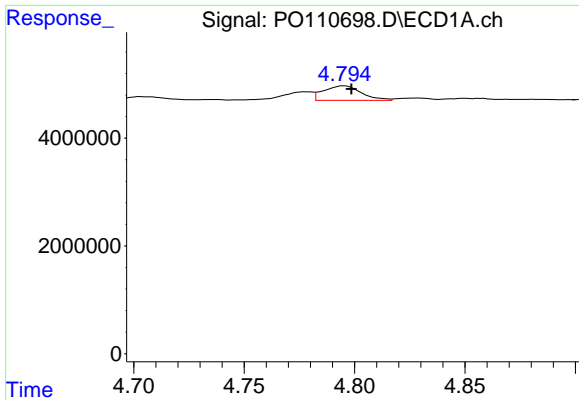
#16 AR-1242-1

R.T.: 4.778 min
 Delta R.T.: -0.001 min
 Response: 1544605
 Conc: 5.57 ng/ml



#16 AR-1242-1

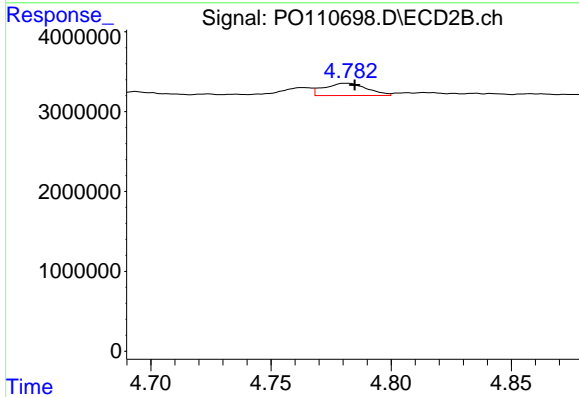
R.T.: 4.763 min
 Delta R.T.: -0.002 min
 Response: 958165
 Conc: 6.41 ng/ml



#17 AR-1242-2

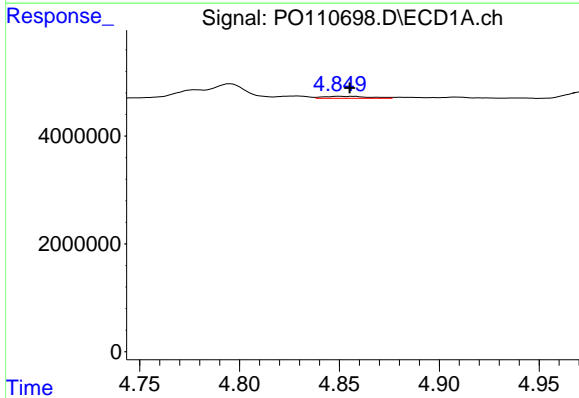
R.T.: 4.795 min
 Delta R.T.: -0.003 min
 Response: 3209151
 Conc: 8.32 ng/ml

Instrument :
 ECD_O
 ClientSampleId :



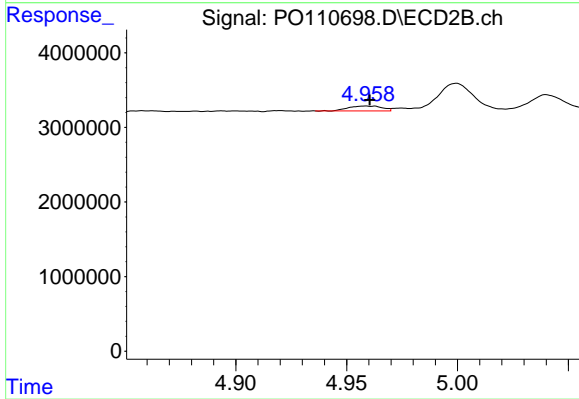
#17 AR-1242-2

R.T.: 4.781 min
 Delta R.T.: -0.003 min
 Response: 1895576
 Conc: 8.88 ng/ml



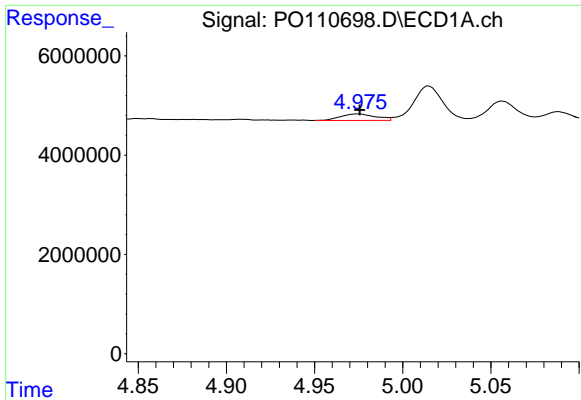
#18 AR-1242-3

R.T.: 4.850 min
 Delta R.T.: -0.005 min
 Response: 613139
 Conc: 2.20 ng/ml



#18 AR-1242-3

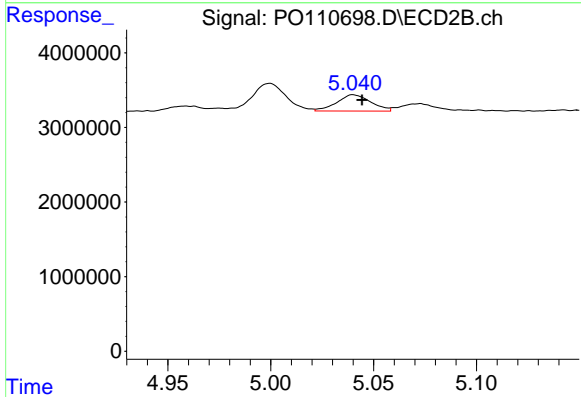
R.T.: 4.959 min
 Delta R.T.: -0.002 min
 Response: 677292
 Conc: 5.86 ng/ml



#19 AR-1242-4

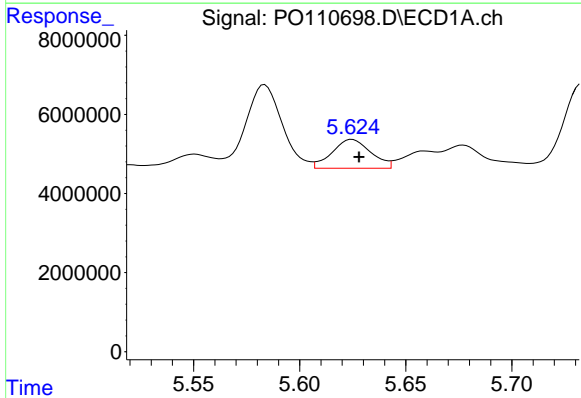
R.T.: 4.975 min
 Delta R.T.: 0.000 min
 Response: 1791609
 Conc: 8.48 ng/ml

Instrument :
 ECD_O
 ClientSampleId :



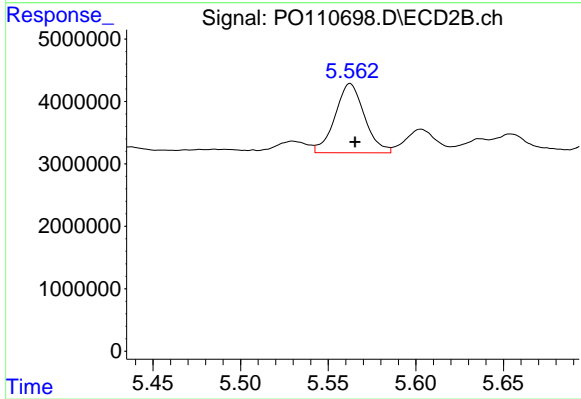
#19 AR-1242-4

R.T.: 5.040 min
 Delta R.T.: -0.004 min
 Response: 2514217
 Conc: 20.93 ng/ml



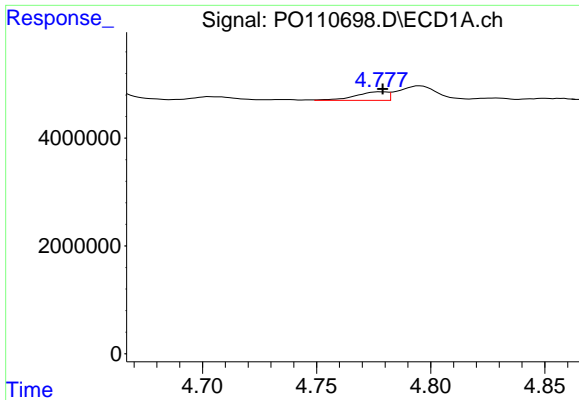
#20 AR-1242-5

R.T.: 5.625 min
 Delta R.T.: -0.003 min
 Response: 9283934
 Conc: 41.01 ng/ml



#20 AR-1242-5

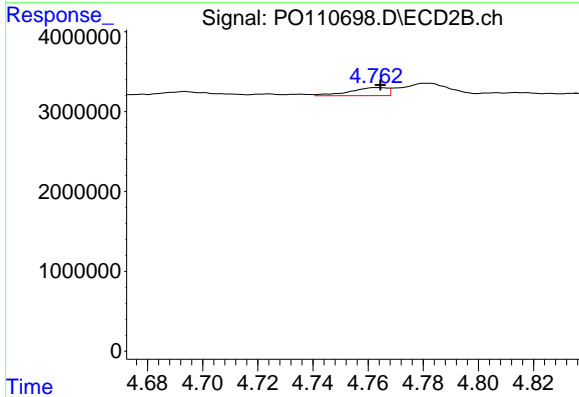
R.T.: 5.563 min
 Delta R.T.: -0.003 min
 Response: 12976585
 Conc: 89.43 ng/ml



#21 AR-1248-1

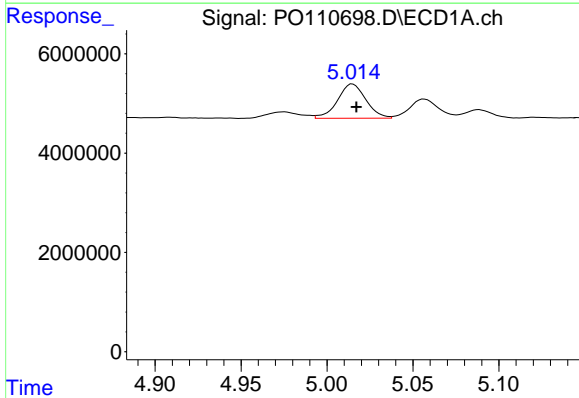
R.T.: 4.778 min
 Delta R.T.: 0.000 min
 Response: 1544605
 Conc: 7.26 ng/ml

Instrument :
 ECD_O
 ClientSampleId :



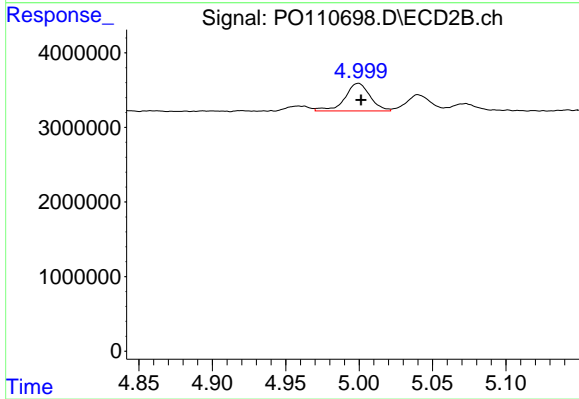
#21 AR-1248-1

R.T.: 4.763 min
 Delta R.T.: -0.001 min
 Response: 958165
 Conc: 8.32 ng/ml



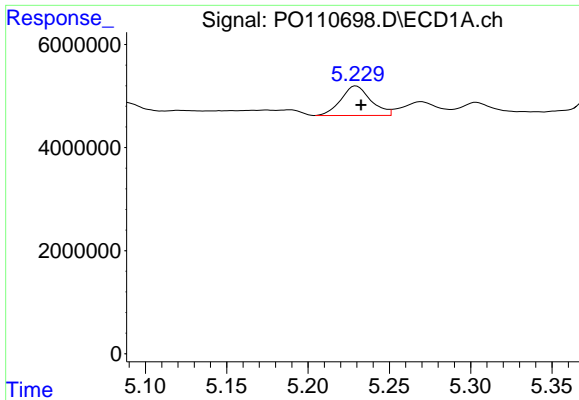
#22 AR-1248-2

R.T.: 5.015 min
 Delta R.T.: -0.002 min
 Response: 7921900
 Conc: 26.77 ng/ml



#22 AR-1248-2

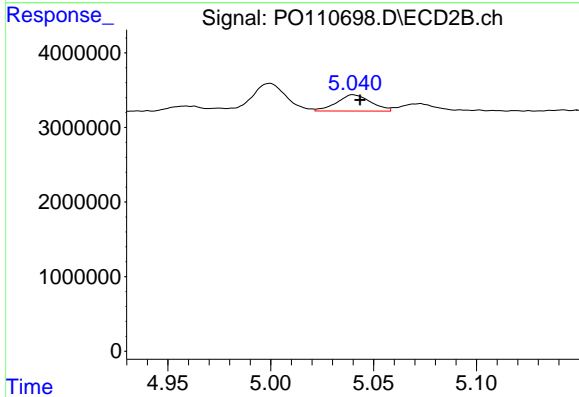
R.T.: 4.999 min
 Delta R.T.: -0.002 min
 Response: 4427535
 Conc: 27.18 ng/ml



#23 AR-1248-3

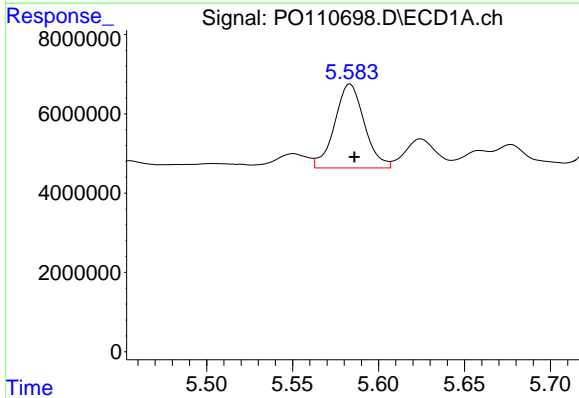
R.T.: 5.230 min
 Delta R.T.: -0.003 min
 Response: 7329608
 Conc: 19.81 ng/ml

Instrument :
 ECD_O
 ClientSampleId :



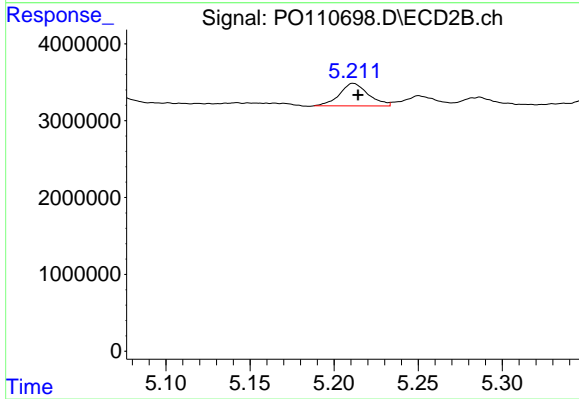
#23 AR-1248-3

R.T.: 5.040 min
 Delta R.T.: -0.003 min
 Response: 2514217
 Conc: 14.30 ng/ml



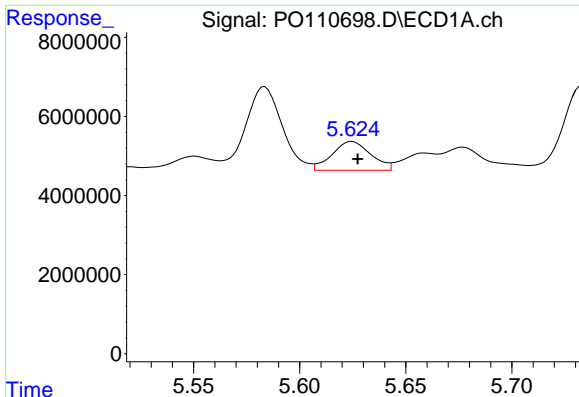
#24 AR-1248-4

R.T.: 5.584 min
 Delta R.T.: -0.002 min
 Response: 25447895
 Conc: 48.94 ng/ml



#24 AR-1248-4

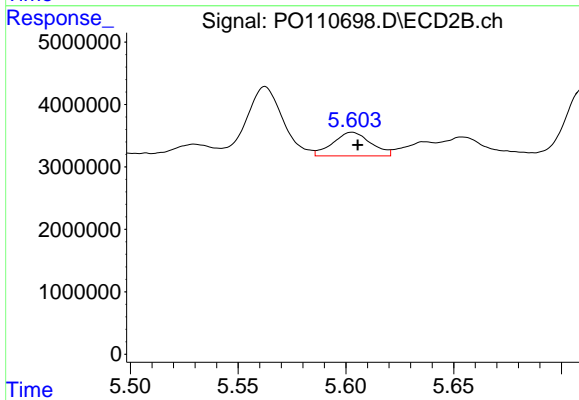
R.T.: 5.212 min
 Delta R.T.: -0.003 min
 Response: 3480529
 Conc: 17.09 ng/ml



#25 AR-1248-5

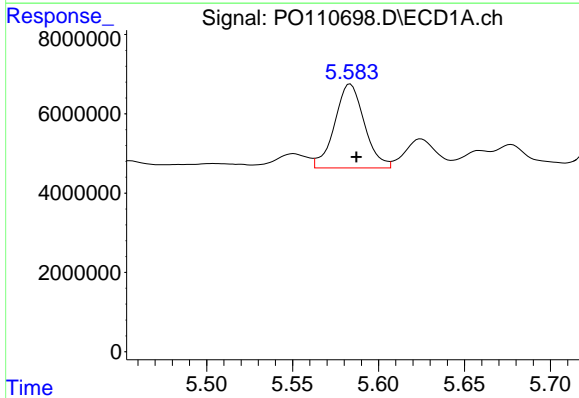
R.T.: 5.625 min
 Delta R.T.: -0.003 min
 Response: 9283934
 Conc: 25.13 ng/ml

Instrument :
 ECD_O
 ClientSampleId :



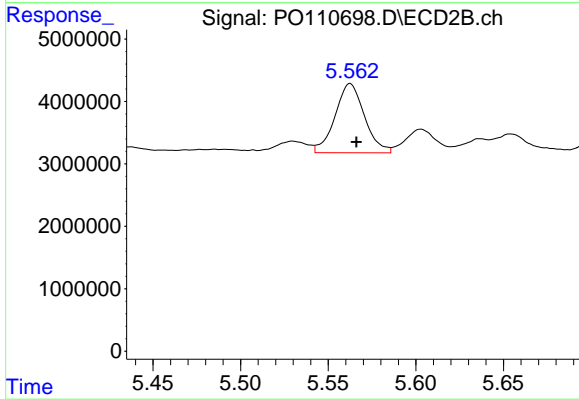
#25 AR-1248-5

R.T.: 5.603 min
 Delta R.T.: -0.003 min
 Response: 4655698
 Conc: 23.59 ng/ml



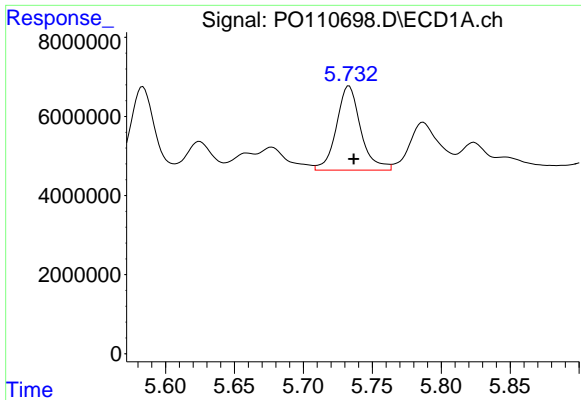
#26 AR-1254-1

R.T.: 5.584 min
 Delta R.T.: -0.003 min
 Response: 25447895
 Conc: 45.61 ng/ml



#26 AR-1254-1

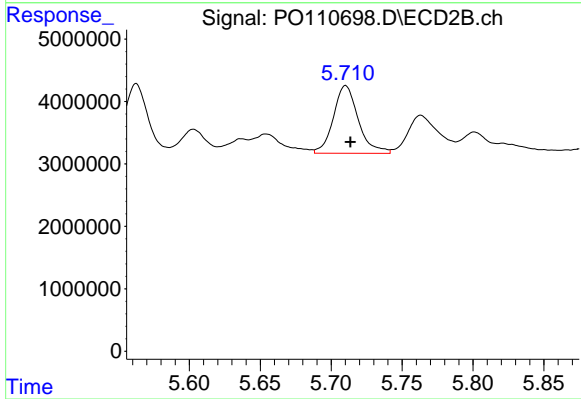
R.T.: 5.563 min
 Delta R.T.: -0.004 min
 Response: 12976585
 Conc: 43.04 ng/ml



#27 AR-1254-2

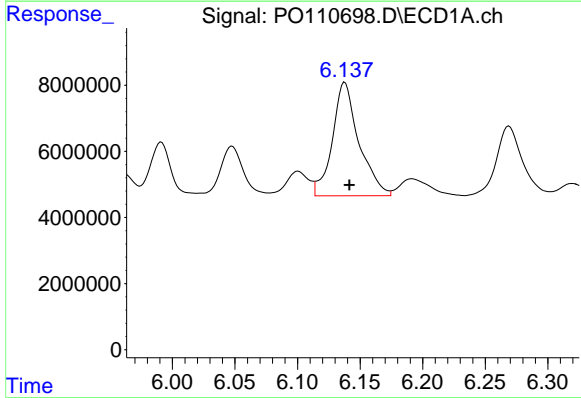
R.T.: 5.733 min
 Delta R.T.: -0.003 min
 Response: 26148606
 Conc: 53.84 ng/ml

Instrument :
 ECD_O
 ClientSampleId :



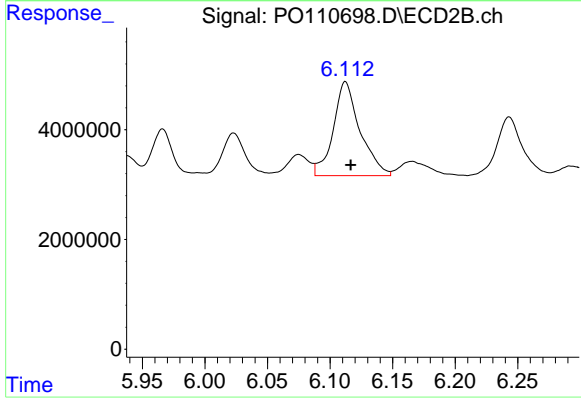
#27 AR-1254-2

R.T.: 5.710 min
 Delta R.T.: -0.003 min
 Response: 13233700
 Conc: 50.00 ng/ml



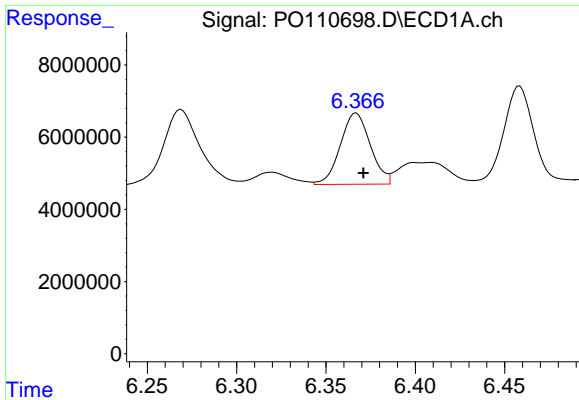
#28 AR-1254-3

R.T.: 6.138 min
 Delta R.T.: -0.004 min
 Response: 50752355
 Conc: 64.80 ng/ml



#28 AR-1254-3

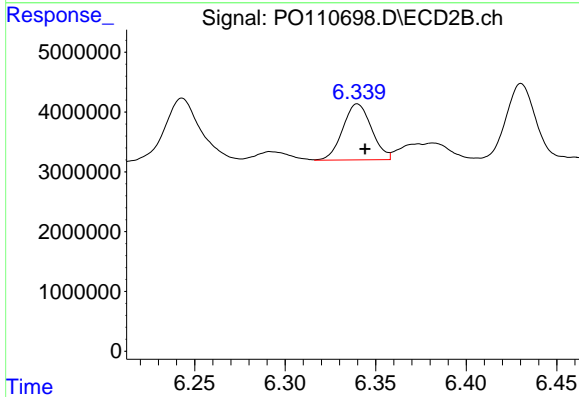
R.T.: 6.112 min
 Delta R.T.: -0.004 min
 Response: 25434874
 Conc: 63.05 ng/ml



#29 AR-1254-4

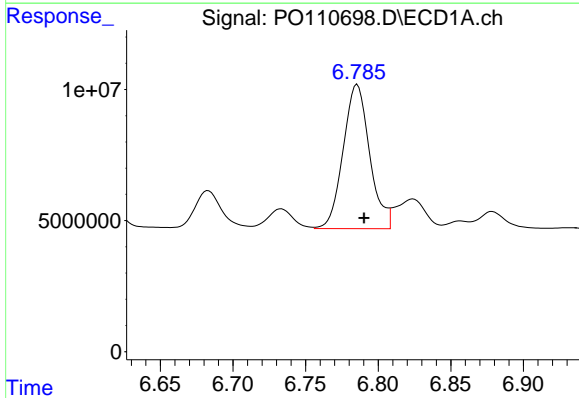
R.T.: 6.367 min
 Delta R.T.: -0.004 min
 Response: 23026950
 Conc: 47.22 ng/ml

Instrument :
 ECD_O
 ClientSampleId :



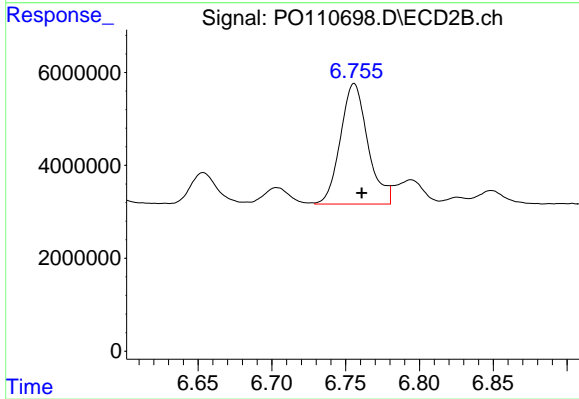
#29 AR-1254-4

R.T.: 6.340 min
 Delta R.T.: -0.004 min
 Response: 10368700
 Conc: 45.14 ng/ml



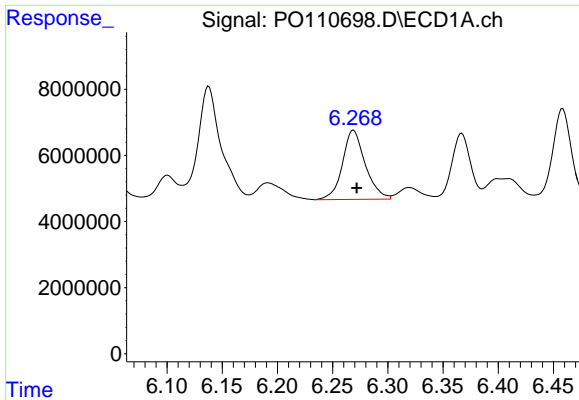
#30 AR-1254-5

R.T.: 6.786 min
 Delta R.T.: -0.005 min
 Response: 69821388
 Conc: 99.62 ng/ml



#30 AR-1254-5

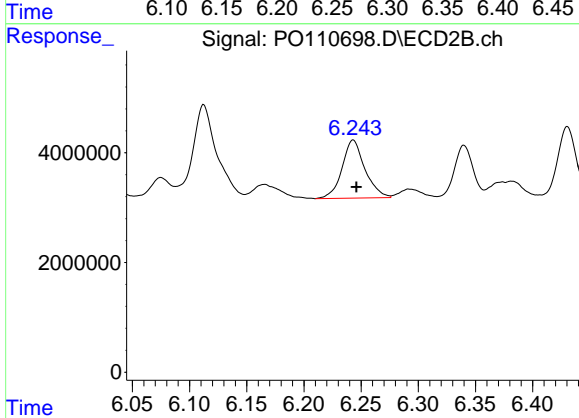
R.T.: 6.756 min
 Delta R.T.: -0.005 min
 Response: 33557724
 Conc: 100.99 ng/ml



#31 AR-1260-1

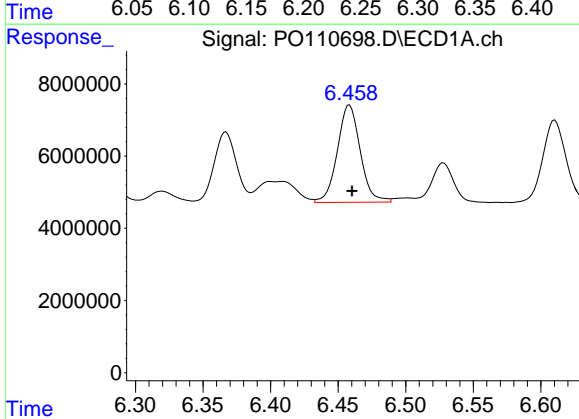
R.T.: 6.269 min
 Delta R.T.: -0.003 min
 Response: 30082214
 Conc: 63.67 ng/ml

Instrument :
 ECD_O
 ClientSampleId :



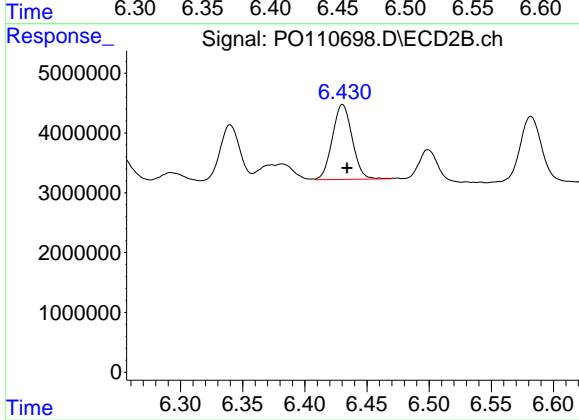
#31 AR-1260-1

R.T.: 6.243 min
 Delta R.T.: -0.003 min
 Response: 14754324
 Conc: 59.99 ng/ml



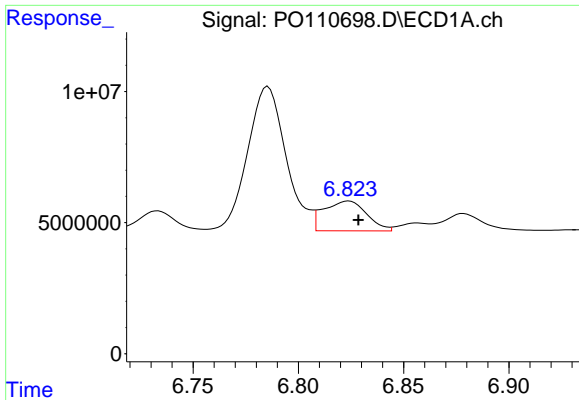
#32 AR-1260-2

R.T.: 6.458 min
 Delta R.T.: -0.002 min
 Response: 31779600
 Conc: 54.19 ng/ml



#32 AR-1260-2

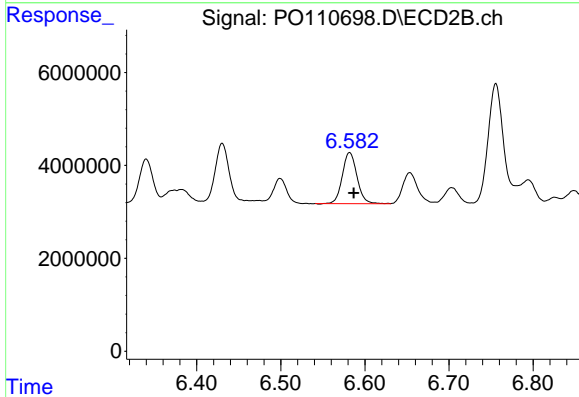
R.T.: 6.430 min
 Delta R.T.: -0.004 min
 Response: 13907743
 Conc: 47.67 ng/ml



#33 AR-1260-3

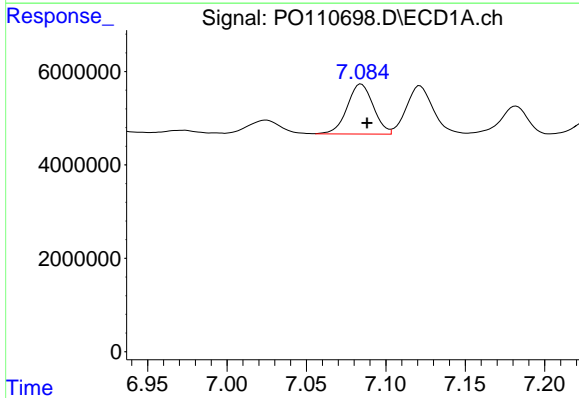
R.T.: 6.824 min
 Delta R.T.: -0.005 min
 Response: 16186879
 Conc: 32.84 ng/ml

Instrument :
 ECD_O
 ClientSampleId :



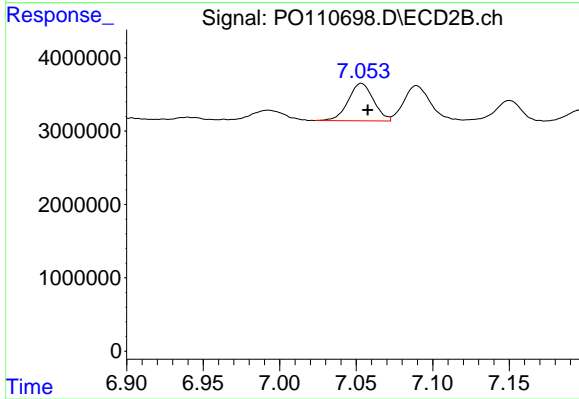
#33 AR-1260-3

R.T.: 6.582 min
 Delta R.T.: -0.005 min
 Response: 13390420
 Conc: 49.43 ng/ml



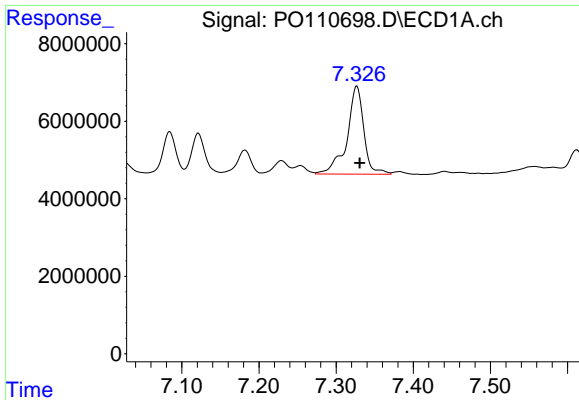
#34 AR-1260-4

R.T.: 7.084 min
 Delta R.T.: -0.004 min
 Response: 12278905
 Conc: 28.93 ng/ml



#34 AR-1260-4

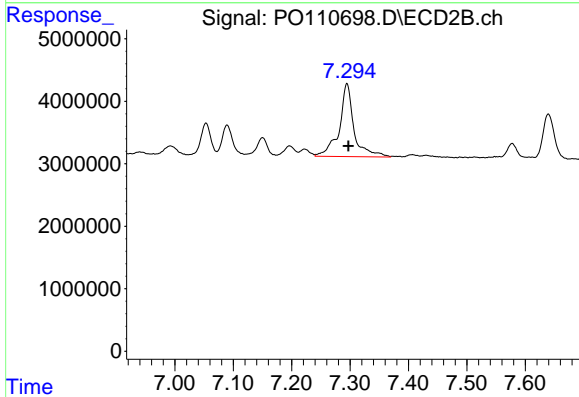
R.T.: 7.053 min
 Delta R.T.: -0.004 min
 Response: 5885466
 Conc: 29.33 ng/ml



#35 AR-1260-5

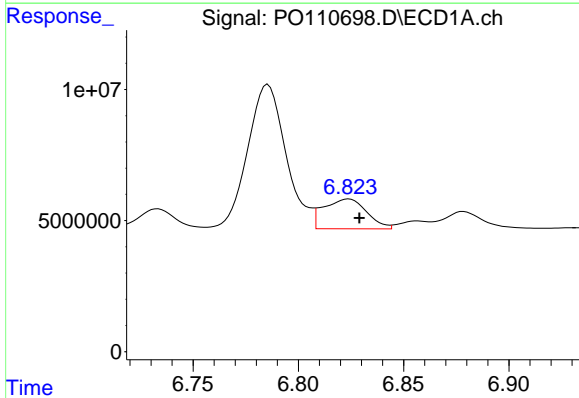
R.T.: 7.327 min
 Delta R.T.: -0.004 min
 Response: 34387570
 Conc: 32.95 ng/ml

Instrument :
 ECD_O
 ClientSampleId :



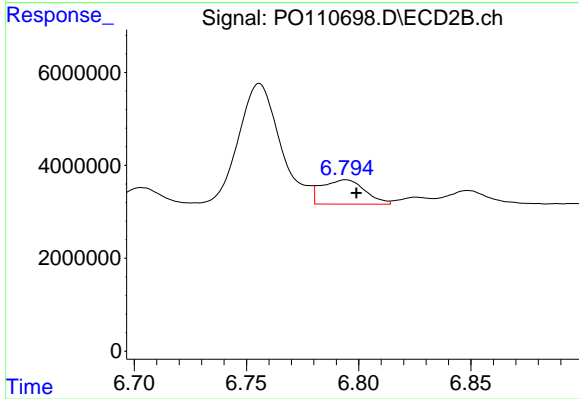
#35 AR-1260-5

R.T.: 7.295 min
 Delta R.T.: -0.003 min
 Response: 20414634
 Conc: 44.49 ng/ml



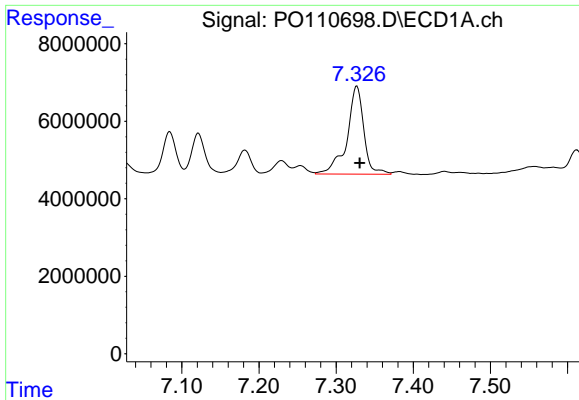
#36 AR-1262-1

R.T.: 6.824 min
 Delta R.T.: -0.005 min
 Response: 16186879
 Conc: 23.08 ng/ml



#36 AR-1262-1

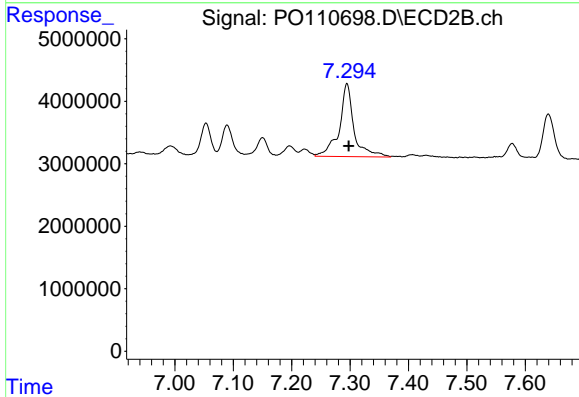
R.T.: 6.794 min
 Delta R.T.: -0.005 min
 Response: 7027531
 Conc: 21.34 ng/ml



#37 AR-1262-2

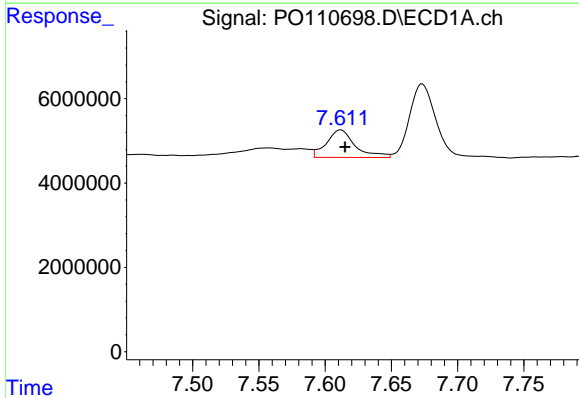
R.T.: 7.327 min
 Delta R.T.: -0.004 min
 Response: 34387570
 Conc: 28.47 ng/ml

Instrument :
 ECD_O
 ClientSampleId :



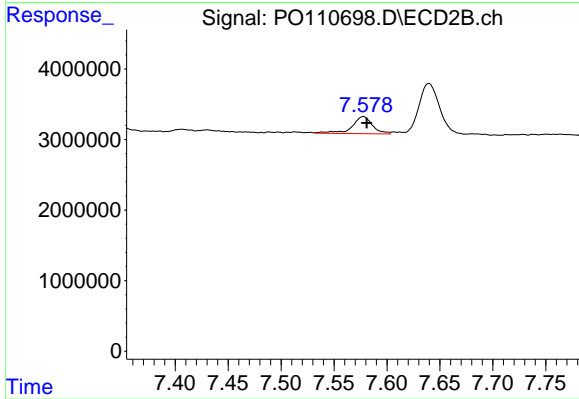
#37 AR-1262-2

R.T.: 7.295 min
 Delta R.T.: -0.003 min
 Response: 20414634
 Conc: 40.15 ng/ml



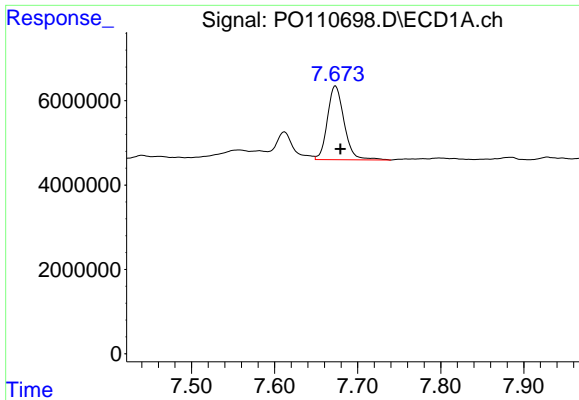
#38 AR-1262-3

R.T.: 7.612 min
 Delta R.T.: -0.003 min
 Response: 9893640
 Conc: 19.43 ng/ml



#38 AR-1262-3

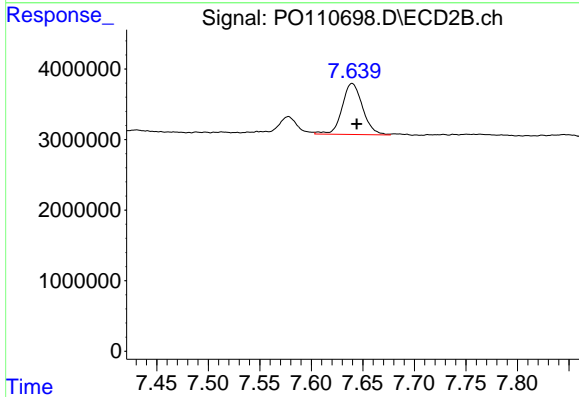
R.T.: 7.578 min
 Delta R.T.: -0.003 min
 Response: 3273582
 Conc: 16.91 ng/ml



#39 AR-1262-4

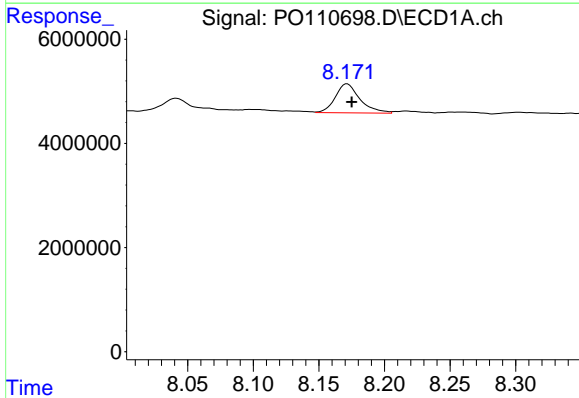
R.T.: 7.673 min
 Delta R.T.: -0.006 min
 Response: 24517861
 Conc: 27.36 ng/ml

Instrument :
 ECD_O
 ClientSampleId :



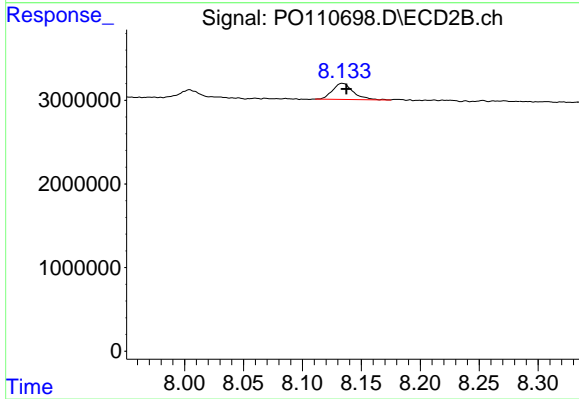
#39 AR-1262-4

R.T.: 7.640 min
 Delta R.T.: -0.005 min
 Response: 10048706
 Conc: 28.95 ng/ml



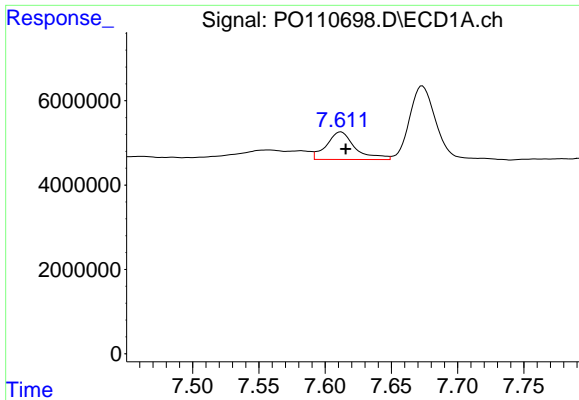
#40 AR-1262-5

R.T.: 8.172 min
 Delta R.T.: -0.003 min
 Response: 7242146
 Conc: 17.97 ng/ml



#40 AR-1262-5

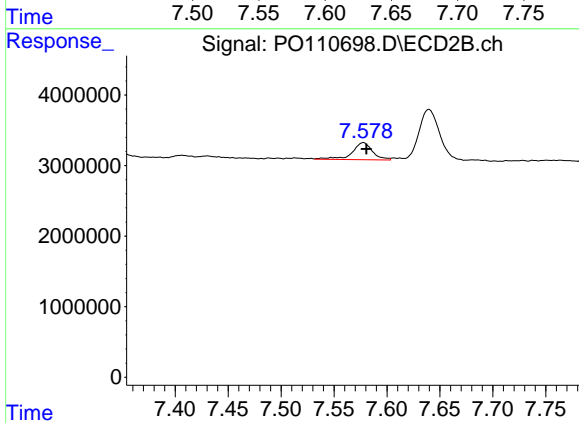
R.T.: 8.134 min
 Delta R.T.: -0.003 min
 Response: 2333388
 Conc: 18.73 ng/ml



#41 AR-1268-1

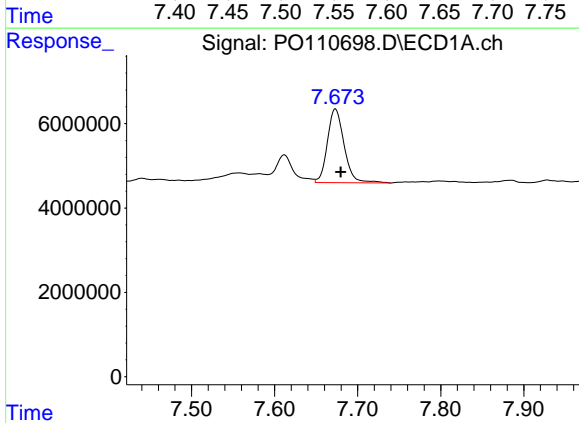
R.T.: 7.612 min
 Delta R.T.: -0.004 min
 Response: 9893640
 Conc: 7.05 ng/ml

Instrument :
 ECD_O
 ClientSampleId :



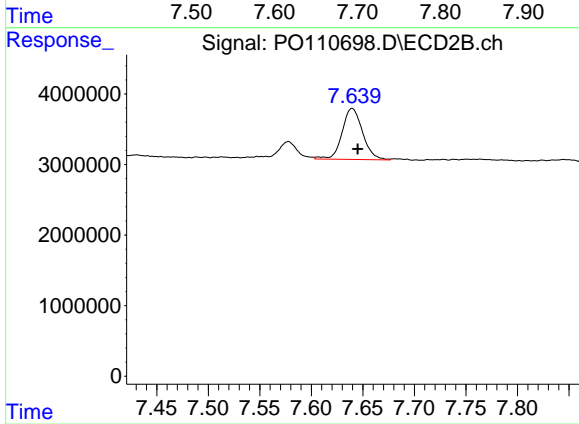
#41 AR-1268-1

R.T.: 7.578 min
 Delta R.T.: -0.003 min
 Response: 3273582
 Conc: 5.98 ng/ml



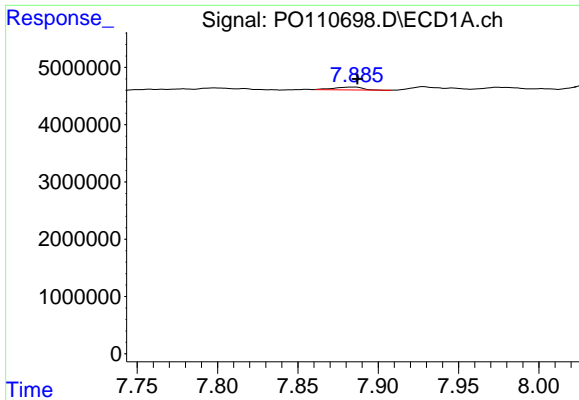
#42 AR-1268-2

R.T.: 7.673 min
 Delta R.T.: -0.006 min
 Response: 24517861
 Conc: 19.16 ng/ml



#42 AR-1268-2

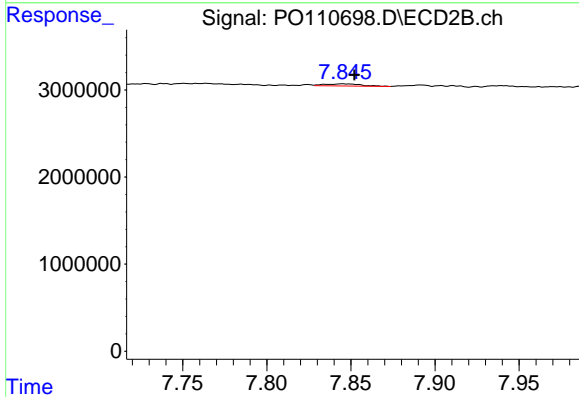
R.T.: 7.640 min
 Delta R.T.: -0.005 min
 Response: 10048706
 Conc: 20.20 ng/ml



#43 AR-1268-3

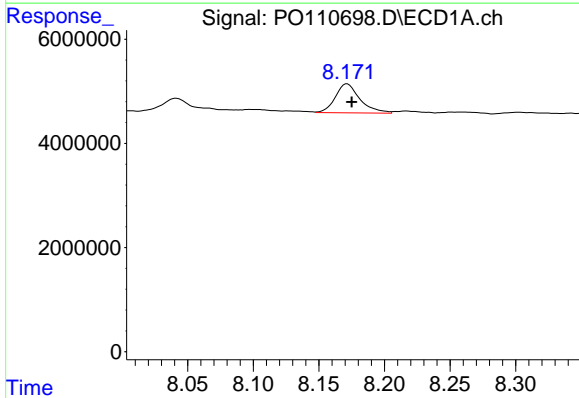
R.T.: 7.885 min
 Delta R.T.: -0.002 min
 Response: 604316
 Conc: 0.58 ng/ml

Instrument :
 ECD_O
 ClientSampleId :



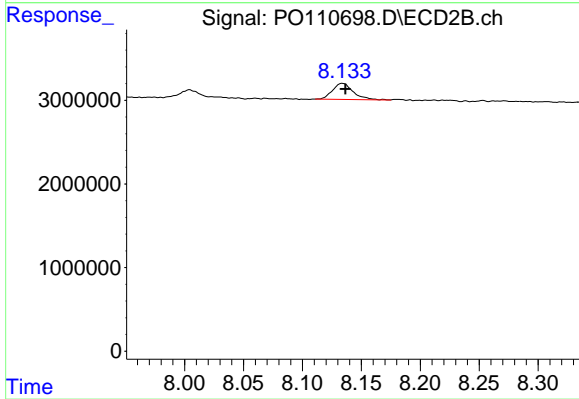
#43 AR-1268-3

R.T.: 7.845 min
 Delta R.T.: -0.007 min
 Response: 353733
 Conc: 0.95 ng/ml



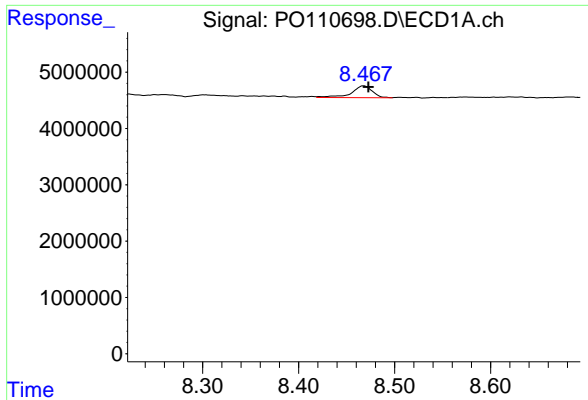
#44 AR-1268-4

R.T.: 8.172 min
 Delta R.T.: -0.003 min
 Response: 7242146
 Conc: 16.31 ng/ml



#44 AR-1268-4

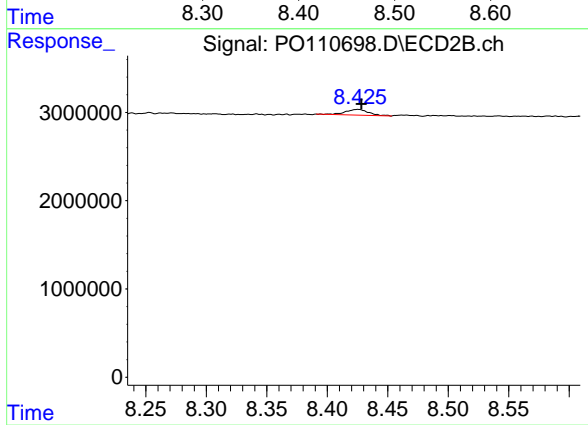
R.T.: 8.134 min
 Delta R.T.: -0.002 min
 Response: 2333388
 Conc: 16.53 ng/ml



#45 AR-1268-5

R.T.: 8.468 min
 Delta R.T.: -0.005 min
 Response: 3166974
 Conc: 0.98 ng/ml

Instrument :
 ECD_O
 ClientSampleId :



#45 AR-1268-5

R.T.: 8.425 min
 Delta R.T.: -0.003 min
 Response: 864058
 Conc: 1.10 ng/ml