

Data Path : Z:\pestpcbsrv\HPCHEM1\ECD\_0\Data\P0042425\  
 Data File : PO110701.D  
 Signal(s) : Signal #1: ECD1A.ch Signal #2: ECD2B.ch  
 Acq On : 24 Apr 2025 21:39  
 Operator : YP/AJ  
 Sample : Q1865-04 10X  
 Misc :  
 ALS Vial : 25 Sample Multiplier: 1

Instrument :  
 ECD\_0  
 ClientSampleId :

Integration File signal 1: autoint1.e  
 Integration File signal 2: autoint2.e  
 Quant Time: Apr 25 00:30:58 2025  
 Quant Method : Z:\pestpcbsrv\HPCHEM1\ECD\_0\methods\P0041025.M  
 Quant Title : GC EXTRACTABLES  
 QLast Update : Fri Apr 11 02:12:41 2025  
 Response via : Initial Calibration  
 Integrator: ChemStation

Volume Inj. : 2 µl  
 Signal #1 Phase : ZB-MR1 Signal #2 Phase: ZB-MR2  
 Signal #1 Info : 30Mx0.32mmx 0.50µ Signal #2 Info : 30M x 0.32mm x 0.25µm

Compound	RT#1	RT#2	Resp#1	Resp#2	ng/ml	ng/ml
System Monitoring Compounds						
1) SA Tetrachlo...	3.686	3.683	8052643	4724204	0.920	0.947
2) SA Decachlor...	8.728	8.678	14202416	3557458	1.799	1.848
Target Compounds						
3) L1 AR-1016-1	4.786	4.771	1031581	966436	3.144	5.506 #
4) L1 AR-1016-2	4.786	4.771	1031581	966436	2.267	3.843 #
5) L1 AR-1016-3	4.863	4.956	542319	292165	1.681	2.153 #
6) L1 AR-1016-4	4.977	5.005	672488	481715	2.699	4.212 #
7) L1 AR-1016-5	5.233	5.213	250697	110226	0.932	0.739
8) L2 AR-1221-1	3.886	3.879	378385	343621	3.206	5.146 #
9) L2 AR-1221-2	3.999	3.988	395936	276703	4.482	5.523
10) L2 AR-1221-3	4.064	4.056	130358	172228	0.495	1.155 #
11) L3 AR-1232-1	4.064	4.056	130358	172228	0.636	1.497 #
12) L3 AR-1232-2	4.562	4.771	107399	966436	1.006	8.717 #
13) L3 AR-1232-3	4.786	4.956	1031581	292165	5.164	5.108
14) L3 AR-1232-4	4.977	5.059	672488	539424	6.574	9.998 #
15) L3 AR-1232-5	5.022	5.213	853568	110226	12.388	1.929 #
16) L4 AR-1242-1	4.786	4.771	1031581	966436	3.717	6.464 #
17) L4 AR-1242-2	4.811	4.771	55470	966436	0.144	4.530 #
18) L4 AR-1242-3	4.863	4.956	542319	292165	1.949	2.528 #
19) L4 AR-1242-4	4.977	5.059	672488	539424	3.182	4.491 #
20) L4 AR-1242-5	5.635	5.579	576064	405531	2.545	2.795
21) L5 AR-1248-1	4.786	4.771	1031581	966436	4.847	8.394 #
22) L5 AR-1248-2	5.022	5.005	853568	481715	2.884	2.957
23) L5 AR-1248-3	5.233	5.059	250697	539424	0.678	3.067 #
24) L5 AR-1248-4	5.583	5.213	129282	110226	0.249	0.541 #
25) L5 AR-1248-5	5.635	5.614	576064	485329	1.559	2.459 #
26) L6 AR-1254-1	5.583	5.579	129282	405531	0.232	1.345 #
27) L6 AR-1254-2	5.728	5.706	694370	576994	1.430	2.180 #
28) L6 AR-1254-3	6.137	6.112	489923	355720	0.626	0.882 #
29) L6 AR-1254-4	6.374	6.339	386715	336388	0.793	1.464 #
30) L6 AR-1254-5	6.757	6.775	940918	450441	1.342	1.356
31) L7 AR-1260-1	6.260	6.208f	44741	441385	0.095	1.795 #
32) L7 AR-1260-2	6.464	6.437	164326	164862	0.280	0.565 #
33) L7 AR-1260-3	6.873f	6.591	6563587	171833	13.317	0.634 #
34) L7 AR-1260-4	7.078	7.042	6847542	782558	16.134	3.900 #
35) L7 AR-1260-5	7.341	7.315	10257693	1197533	9.830	2.610 #
36) L8 AR-1262-1	6.873f	6.775	6563587	450441	9.357	1.368 #
37) L8 AR-1262-2	7.341	7.315	10257693	1197533	8.493	2.355 #
38) L8 AR-1262-3	7.635	7.583	5100020	627746	10.018	3.242 #
39) L8 AR-1262-4	7.672	7.635	5989826	3011711	6.683	8.678 #
40) L8 AR-1262-5	8.178	8.099f	318384	111972	0.790	0.899
41) L9 AR-1268-1	7.635	7.583	5100020	627746	3.632	1.146 #

Data Path : Z:\pestpcbsrv\HPCHEM1\ECD\_0\Data\P0042425\  
 Data File : PO110701.D  
 Signal(s) : Signal #1: ECD1A.ch Signal #2: ECD2B.ch  
 Acq On : 24 Apr 2025 21:39  
 Operator : YP/AJ  
 Sample : Q1865-04 10X  
 Misc :  
 ALS Vial : 25 Sample Multiplier: 1

Instrument :  
 ECD\_0  
 ClientSampleId :

Integration File signal 1: autoint1.e  
 Integration File signal 2: autoint2.e  
 Quant Time: Apr 25 00:30:58 2025  
 Quant Method : Z:\pestpcbsrv\HPCHEM1\ECD\_0\methods\P0041025.M  
 Quant Title : GC EXTRACTABLES  
 QLast Update : Fri Apr 11 02:12:41 2025  
 Response via : Initial Calibration  
 Integrator: ChemStation

Volume Inj. : 2 µl  
 Signal #1 Phase : ZB-MR1 Signal #2 Phase: ZB-MR2  
 Signal #1 Info : 30Mx0.32mmx 0.50µ Signal #2 Info : 30M x 0.32mm x 0.25µm

	Compound	RT#1	RT#2	Resp#1	Resp#2	ng/ml	ng/ml
42)	L9 AR-1268-2	7.672	7.635	5989826	3011711	4.680	6.054 #
43)	L9 AR-1268-3	7.878	7.850	168148	46164	0.161	0.124
44)	L9 AR-1268-4	8.178	8.099f	318384	111972	0.717	0.793
45)	L9 AR-1268-5	8.474	8.414	146227	-24551	0.045	N.D. #

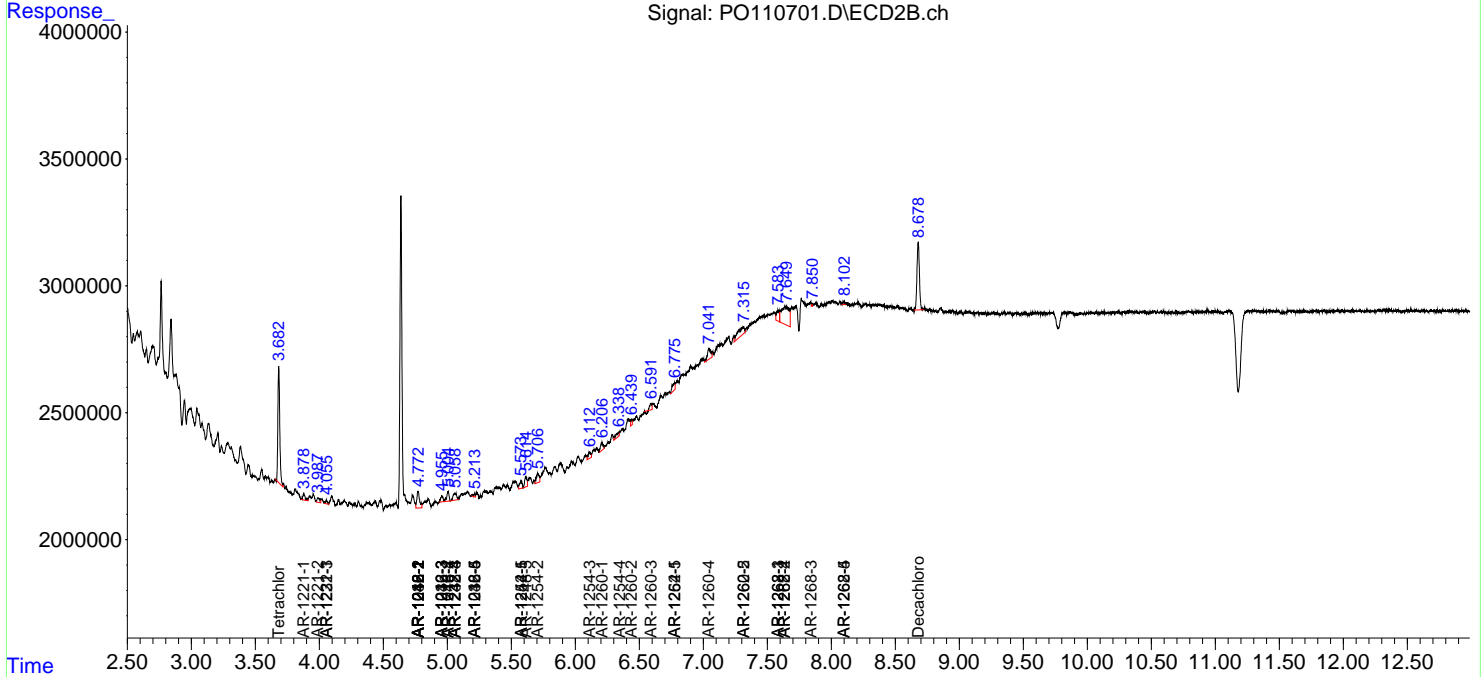
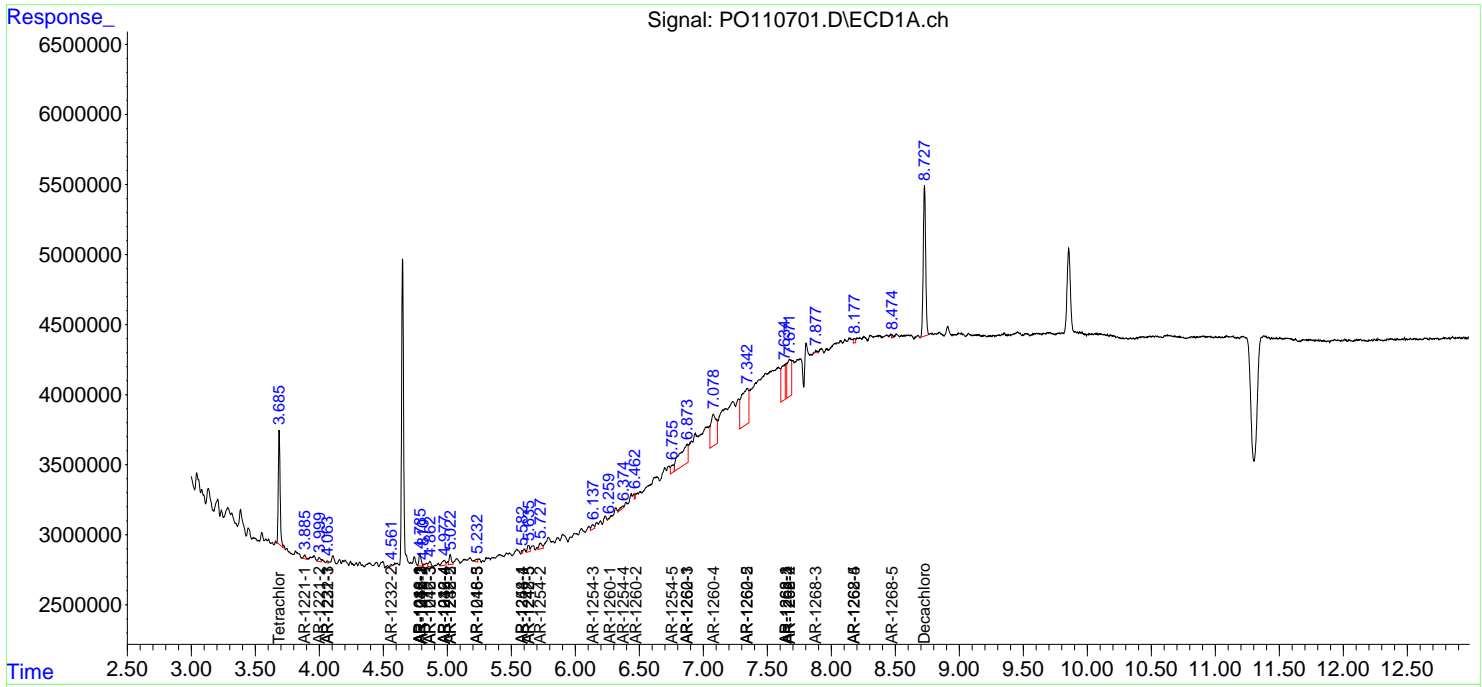
(f)=RT Delta > 1/2 Window (#)=Amounts differ by > 25% (m)=manual int.

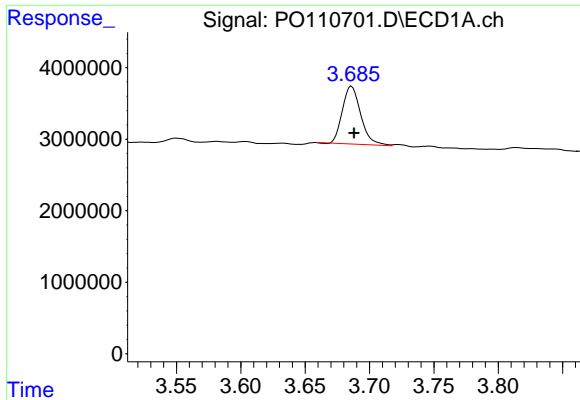
Data Path : Z:\pestpcbsrv\HPCHEM1\ECD\_O\Data\PO042425\  
 Data File : PO110701.D  
 Signal(s) : Signal #1: ECD1A.ch Signal #2: ECD2B.ch  
 Acq On : 24 Apr 2025 21:39  
 Operator : YP/AJ  
 Sample : Q1865-04 10X  
 Misc :  
 ALS Vial : 25 Sample Multiplier: 1

Instrument :  
 ECD\_O  
 ClientSampleId :

Integration File signal 1: autoint1.e  
 Integration File signal 2: autoint2.e  
 Quant Time: Apr 25 00:30:58 2025  
 Quant Method : Z:\pestpcbsrv\HPCHEM1\ECD\_O\methods\PO041025.M  
 Quant Title : GC EXTRACTABLES  
 QLast Update : Fri Apr 11 02:12:41 2025  
 Response via : Initial Calibration  
 Integrator: ChemStation

Volume Inj. : 2 µl  
 Signal #1 Phase : ZB-MR1 Signal #2 Phase: ZB-MR2  
 Signal #1 Info : 30Mx0.32mmx 0.50µ Signal #2 Info : 30M x 0.32mm x 0.25µm

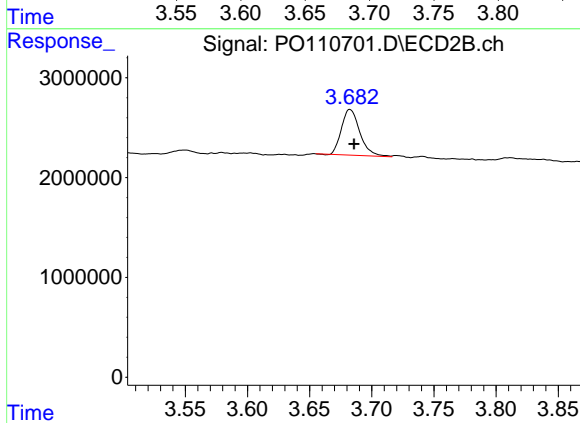




#1 Tetrachloro-m-xylene

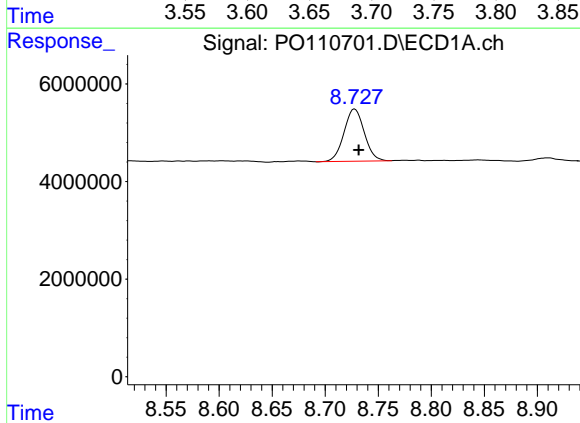
R.T.: 3.686 min  
 Delta R.T.: -0.002 min  
 Response: 8052643  
 Conc: 0.92 ng/ml

Instrument :  
 ECD\_O  
 ClientSampleId :



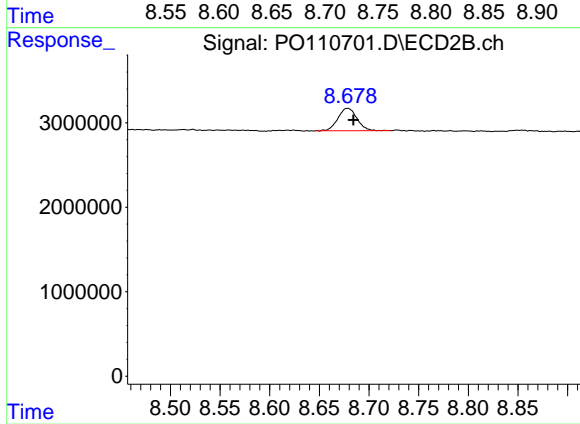
#1 Tetrachloro-m-xylene

R.T.: 3.683 min  
 Delta R.T.: -0.003 min  
 Response: 4724204  
 Conc: 0.95 ng/ml



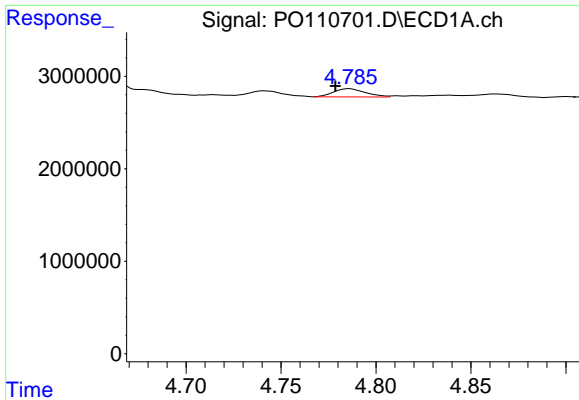
#2 Decachlorobiphenyl

R.T.: 8.728 min  
 Delta R.T.: -0.004 min  
 Response: 14202416  
 Conc: 1.80 ng/ml



#2 Decachlorobiphenyl

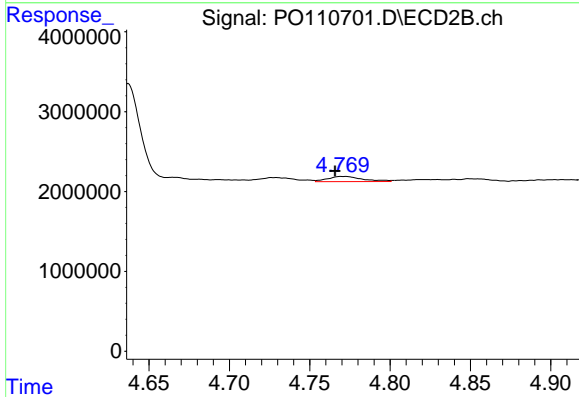
R.T.: 8.678 min  
 Delta R.T.: -0.006 min  
 Response: 3557458  
 Conc: 1.85 ng/ml



#3 AR-1016-1

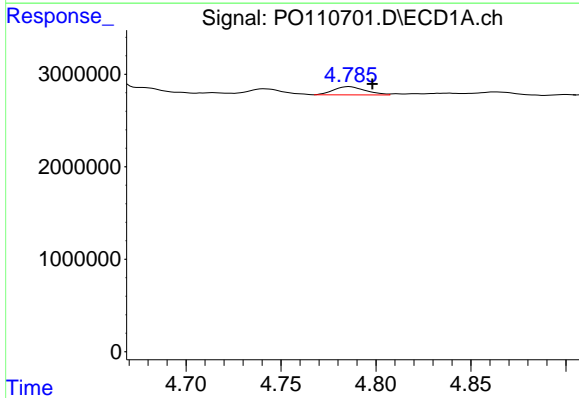
R.T.: 4.786 min  
 Delta R.T.: 0.007 min  
 Response: 1031581  
 Conc: 3.14 ng/ml

Instrument :  
 ECD\_O  
 ClientSampleId :



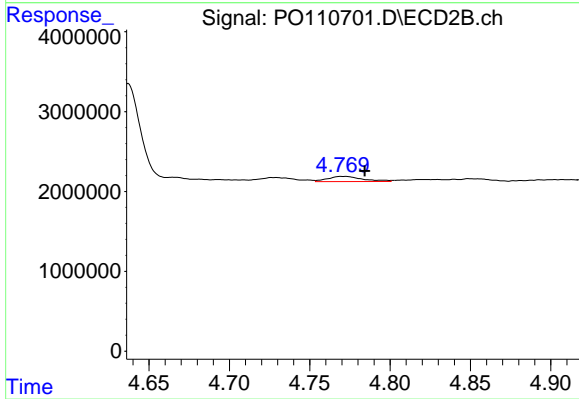
#3 AR-1016-1

R.T.: 4.771 min  
 Delta R.T.: 0.006 min  
 Response: 966436  
 Conc: 5.51 ng/ml



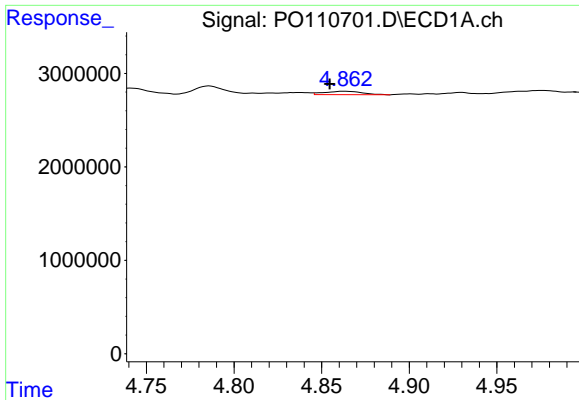
#4 AR-1016-2

R.T.: 4.786 min  
 Delta R.T.: -0.012 min  
 Response: 1031581  
 Conc: 2.27 ng/ml



#4 AR-1016-2

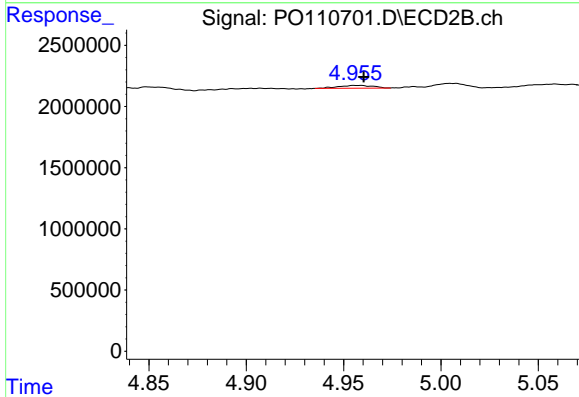
R.T.: 4.771 min  
 Delta R.T.: -0.013 min  
 Response: 966436  
 Conc: 3.84 ng/ml



#5 AR-1016-3

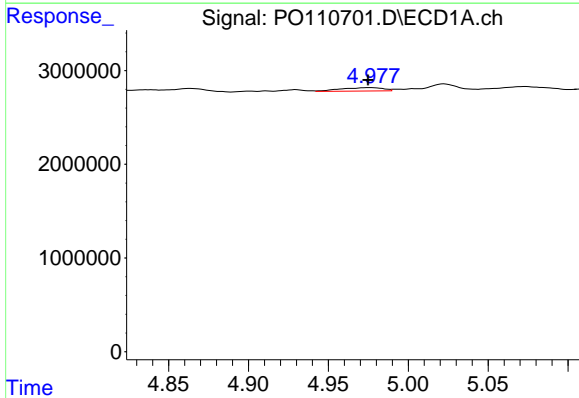
R.T.: 4.863 min  
 Delta R.T.: 0.009 min  
 Response: 542319  
 Conc: 1.68 ng/ml

Instrument :  
 ECD\_O  
 ClientSampleId :



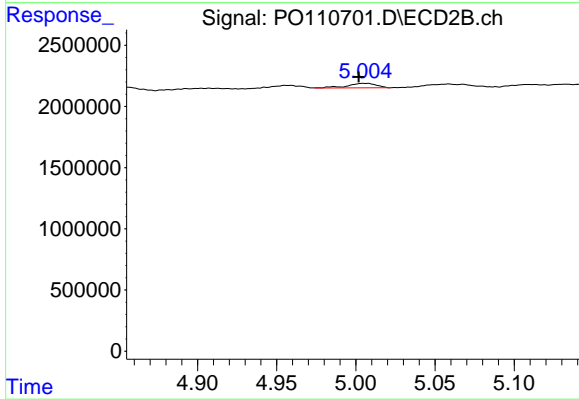
#5 AR-1016-3

R.T.: 4.956 min  
 Delta R.T.: -0.004 min  
 Response: 292165  
 Conc: 2.15 ng/ml



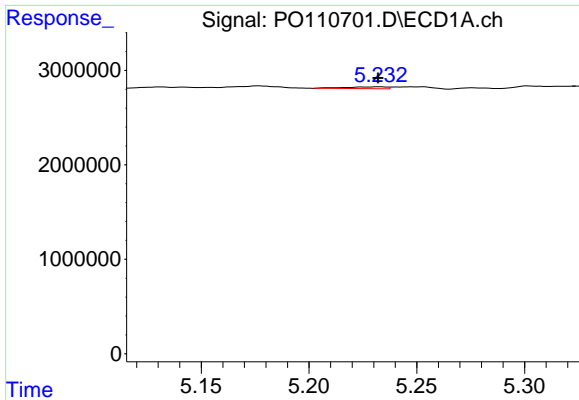
#6 AR-1016-4

R.T.: 4.977 min  
 Delta R.T.: 0.002 min  
 Response: 672488  
 Conc: 2.70 ng/ml



#6 AR-1016-4

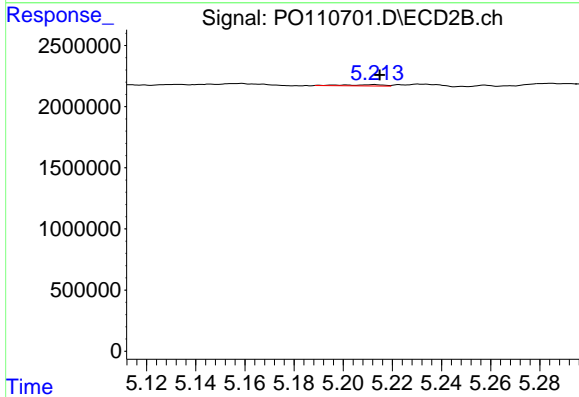
R.T.: 5.005 min  
 Delta R.T.: 0.003 min  
 Response: 481715  
 Conc: 4.21 ng/ml



#7 AR-1016-5

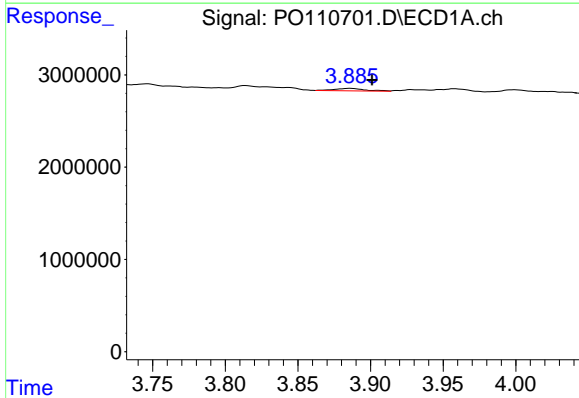
R.T.: 5.233 min  
 Delta R.T.: 0.000 min  
 Response: 250697  
 Conc: 0.93 ng/ml

Instrument :  
 ECD\_O  
 ClientSampleId :



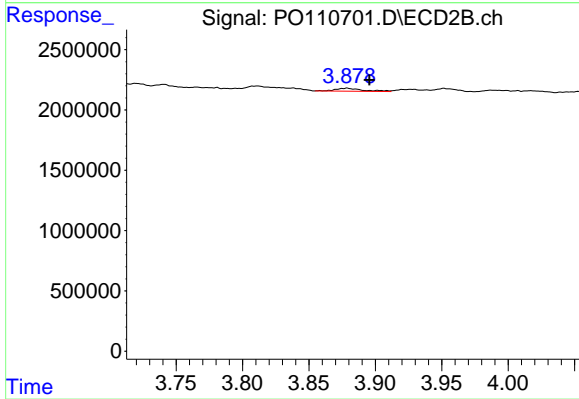
#7 AR-1016-5

R.T.: 5.213 min  
 Delta R.T.: -0.002 min  
 Response: 110226  
 Conc: 0.74 ng/ml



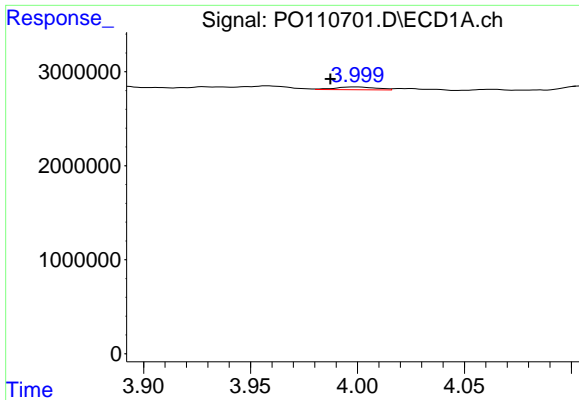
#8 AR-1221-1

R.T.: 3.886 min  
 Delta R.T.: -0.015 min  
 Response: 378385  
 Conc: 3.21 ng/ml



#8 AR-1221-1

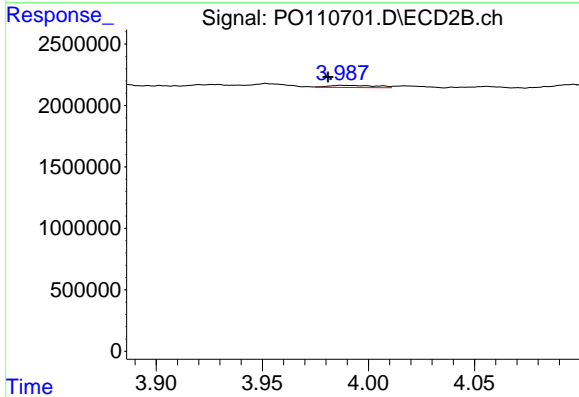
R.T.: 3.879 min  
 Delta R.T.: -0.017 min  
 Response: 343621  
 Conc: 5.15 ng/ml



#9 AR-1221-2

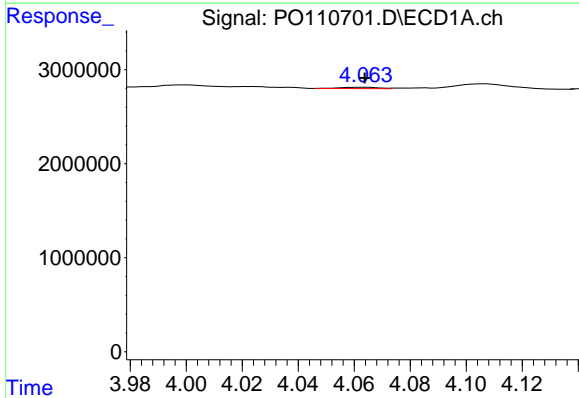
R.T.: 3.999 min  
 Delta R.T.: 0.012 min  
 Response: 395936  
 Conc: 4.48 ng/ml

Instrument :  
 ECD\_O  
 ClientSampleId :



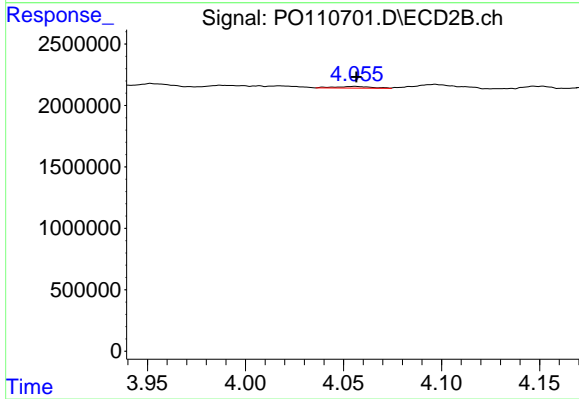
#9 AR-1221-2

R.T.: 3.988 min  
 Delta R.T.: 0.007 min  
 Response: 276703  
 Conc: 5.52 ng/ml



#10 AR-1221-3

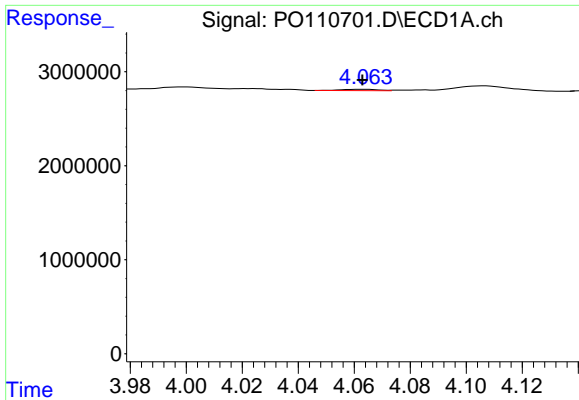
R.T.: 4.064 min  
 Delta R.T.: 0.000 min  
 Response: 130358  
 Conc: 0.50 ng/ml



#10 AR-1221-3

R.T.: 4.056 min  
 Delta R.T.: 0.000 min  
 Response: 172228  
 Conc: 1.15 ng/ml

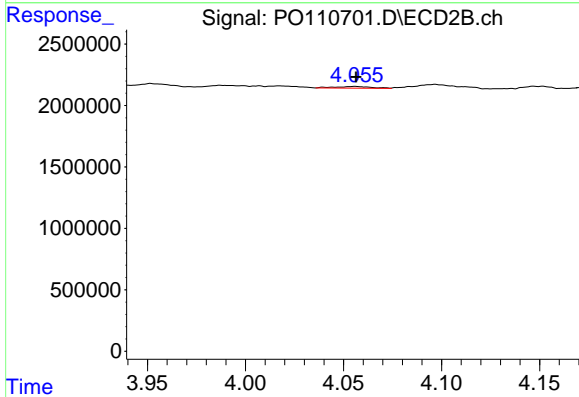




#11 AR-1232-1

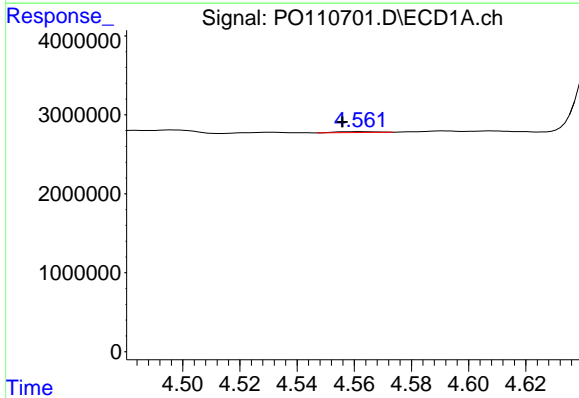
R.T.: 4.064 min  
 Delta R.T.: 0.000 min  
 Response: 130358  
 Conc: 0.64 ng/ml

Instrument :  
 ECD\_O  
 ClientSampleId :



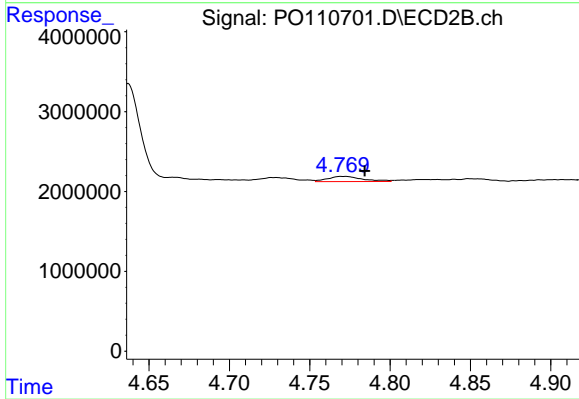
#11 AR-1232-1

R.T.: 4.056 min  
 Delta R.T.: 0.000 min  
 Response: 172228  
 Conc: 1.50 ng/ml



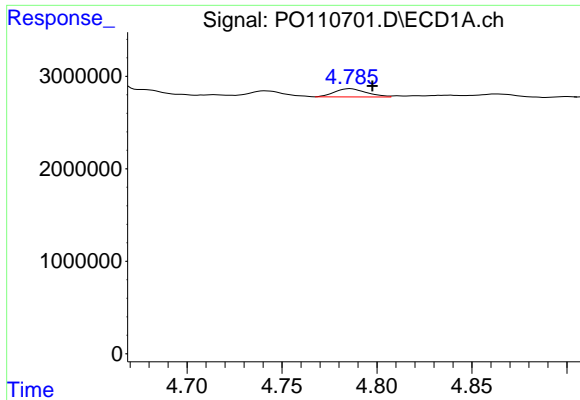
#12 AR-1232-2

R.T.: 4.562 min  
 Delta R.T.: 0.006 min  
 Response: 107399  
 Conc: 1.01 ng/ml



#12 AR-1232-2

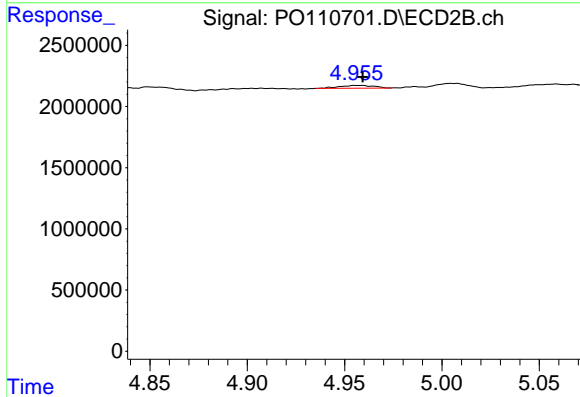
R.T.: 4.771 min  
 Delta R.T.: -0.013 min  
 Response: 966436  
 Conc: 8.72 ng/ml



#13 AR-1232-3

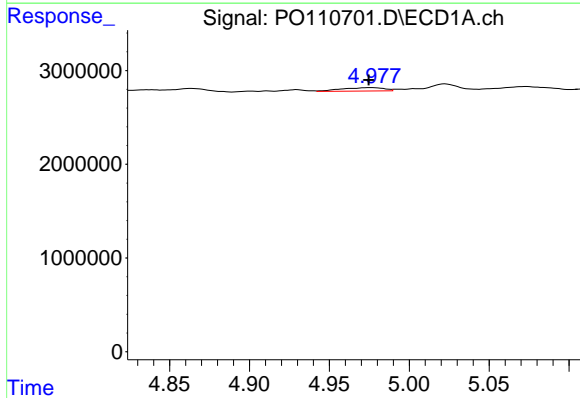
R.T.: 4.786 min  
 Delta R.T.: -0.012 min  
 Response: 1031581  
 Conc: 5.16 ng/ml

Instrument :  
 ECD\_O  
 ClientSampleId :



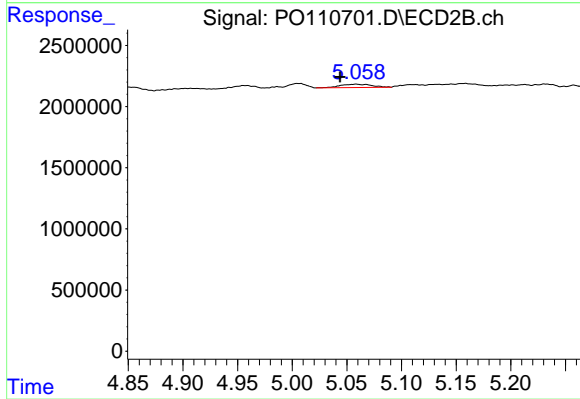
#13 AR-1232-3

R.T.: 4.956 min  
 Delta R.T.: -0.003 min  
 Response: 292165  
 Conc: 5.11 ng/ml



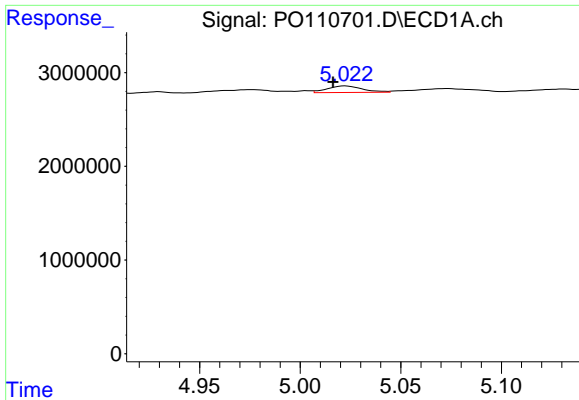
#14 AR-1232-4

R.T.: 4.977 min  
 Delta R.T.: 0.002 min  
 Response: 672488  
 Conc: 6.57 ng/ml



#14 AR-1232-4

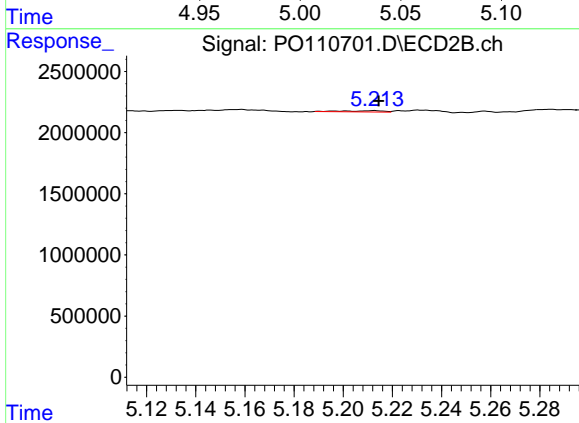
R.T.: 5.059 min  
 Delta R.T.: 0.015 min  
 Response: 539424  
 Conc: 10.00 ng/ml



#15 AR-1232-5

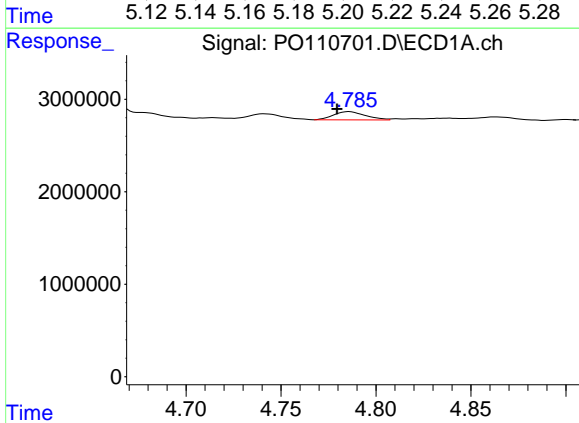
R.T.: 5.022 min  
 Delta R.T.: 0.006 min  
 Response: 853568  
 Conc: 12.39 ng/ml

Instrument :  
 ECD\_O  
 ClientSampleId :



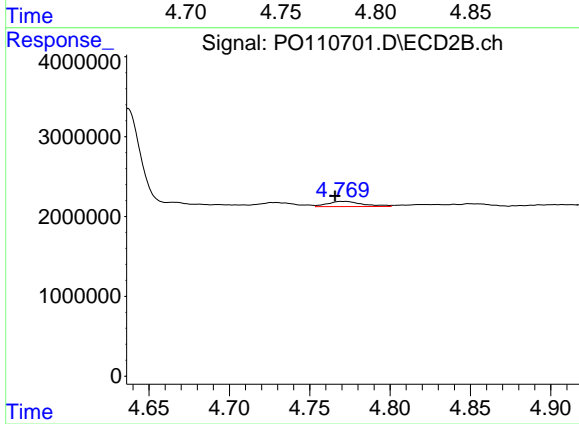
#15 AR-1232-5

R.T.: 5.213 min  
 Delta R.T.: -0.002 min  
 Response: 110226  
 Conc: 1.93 ng/ml



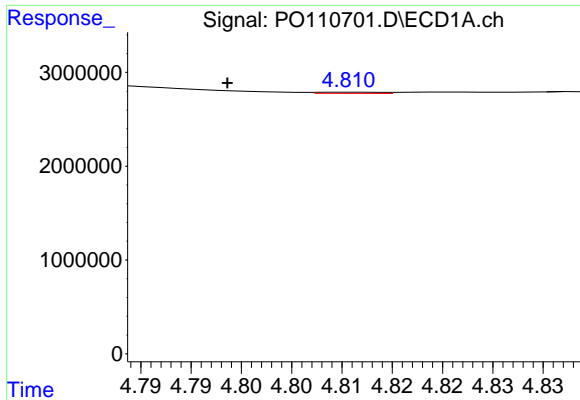
#16 AR-1242-1

R.T.: 4.786 min  
 Delta R.T.: 0.006 min  
 Response: 1031581  
 Conc: 3.72 ng/ml



#16 AR-1242-1

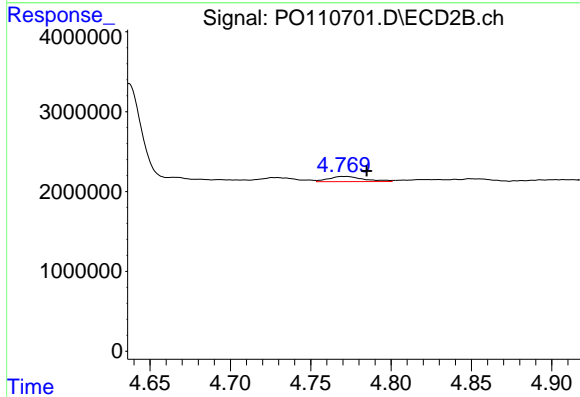
R.T.: 4.771 min  
 Delta R.T.: 0.006 min  
 Response: 966436  
 Conc: 6.46 ng/ml



#17 AR-1242-2

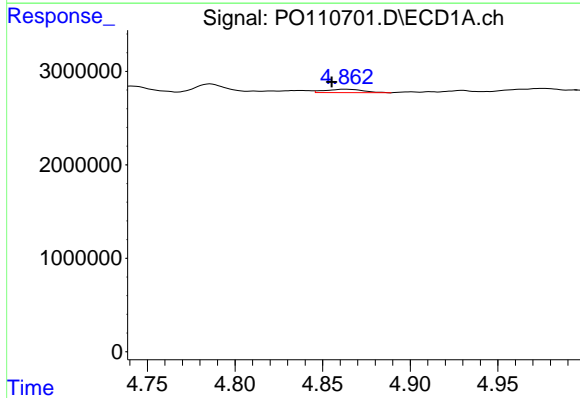
R.T.: 4.811 min  
 Delta R.T.: 0.013 min  
 Response: 55470  
 Conc: 0.14 ng/ml

Instrument :  
 ECD\_O  
 ClientSampleId :



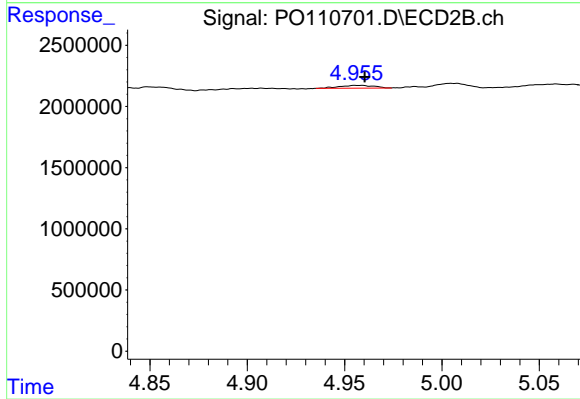
#17 AR-1242-2

R.T.: 4.771 min  
 Delta R.T.: -0.014 min  
 Response: 966436  
 Conc: 4.53 ng/ml



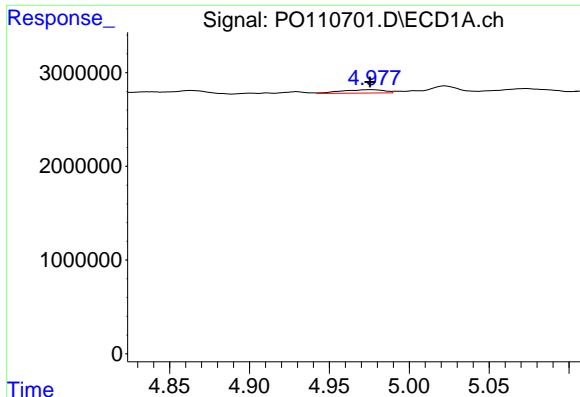
#18 AR-1242-3

R.T.: 4.863 min  
 Delta R.T.: 0.008 min  
 Response: 542319  
 Conc: 1.95 ng/ml



#18 AR-1242-3

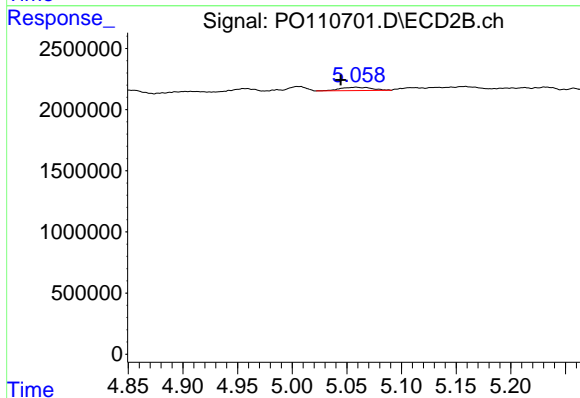
R.T.: 4.956 min  
 Delta R.T.: -0.004 min  
 Response: 292165  
 Conc: 2.53 ng/ml



#19 AR-1242-4

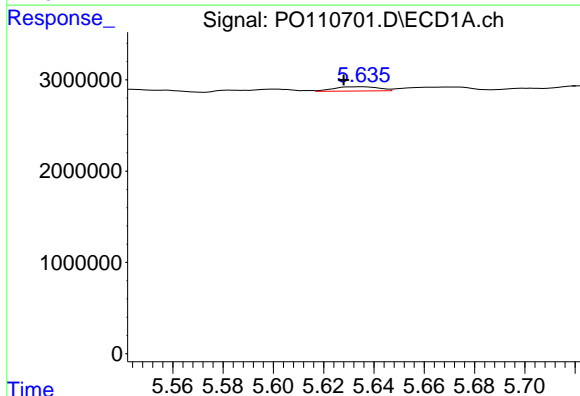
R.T.: 4.977 min  
 Delta R.T.: 0.001 min  
 Response: 672488  
 Conc: 3.18 ng/ml

Instrument :  
 ECD\_O  
 ClientSampleId :



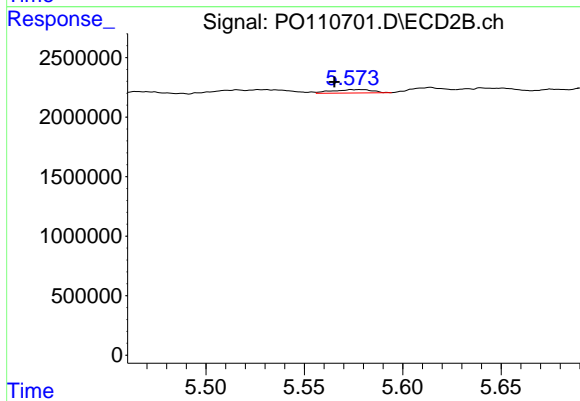
#19 AR-1242-4

R.T.: 5.059 min  
 Delta R.T.: 0.014 min  
 Response: 539424  
 Conc: 4.49 ng/ml



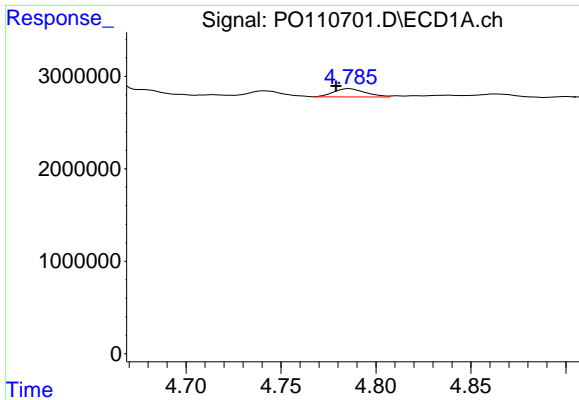
#20 AR-1242-5

R.T.: 5.635 min  
 Delta R.T.: 0.007 min  
 Response: 576064  
 Conc: 2.54 ng/ml



#20 AR-1242-5

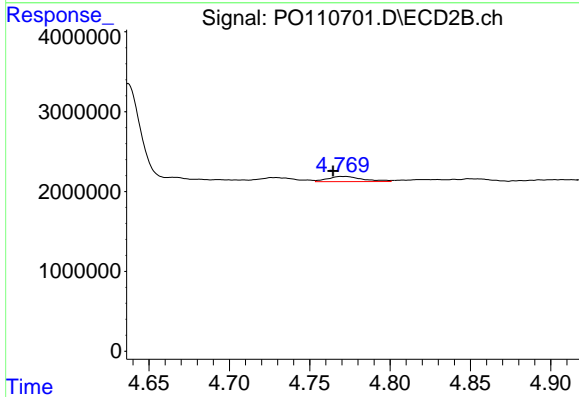
R.T.: 5.579 min  
 Delta R.T.: 0.013 min  
 Response: 405531  
 Conc: 2.79 ng/ml



#21 AR-1248-1

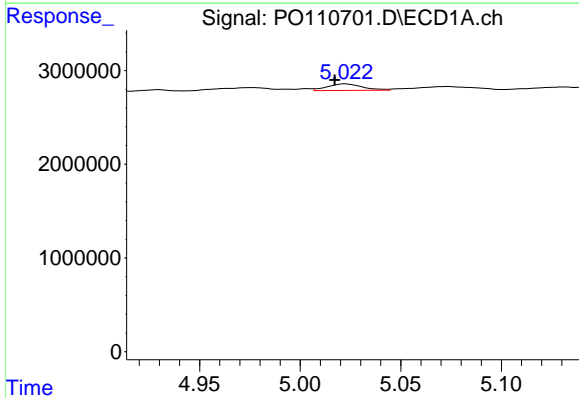
R.T.: 4.786 min  
 Delta R.T.: 0.007 min  
 Response: 1031581  
 Conc: 4.85 ng/ml

Instrument :  
 ECD\_O  
 ClientSampleId :



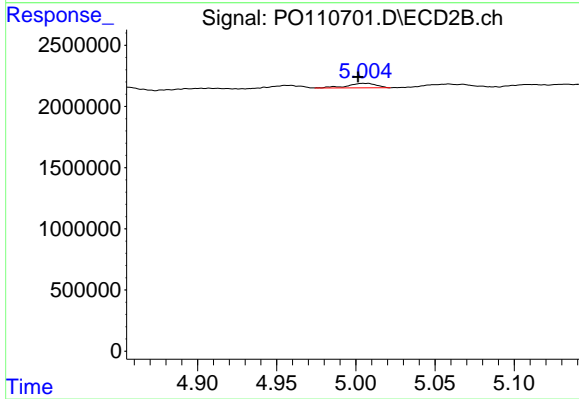
#21 AR-1248-1

R.T.: 4.771 min  
 Delta R.T.: 0.007 min  
 Response: 966436  
 Conc: 8.39 ng/ml



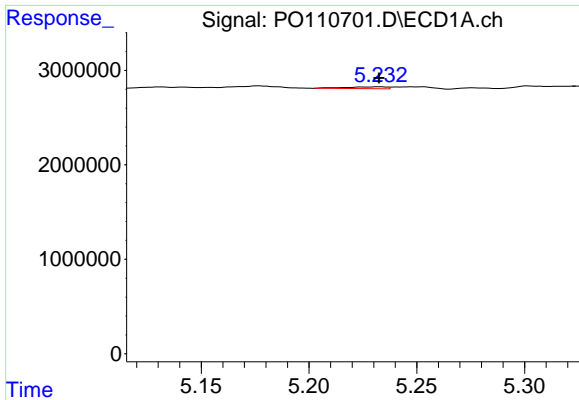
#22 AR-1248-2

R.T.: 5.022 min  
 Delta R.T.: 0.005 min  
 Response: 853568  
 Conc: 2.88 ng/ml



#22 AR-1248-2

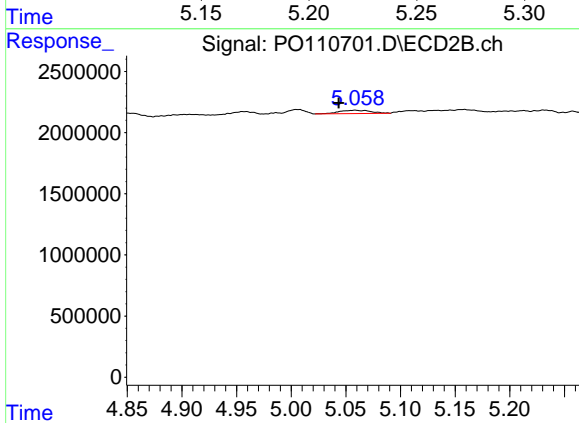
R.T.: 5.005 min  
 Delta R.T.: 0.004 min  
 Response: 481715  
 Conc: 2.96 ng/ml



#23 AR-1248-3

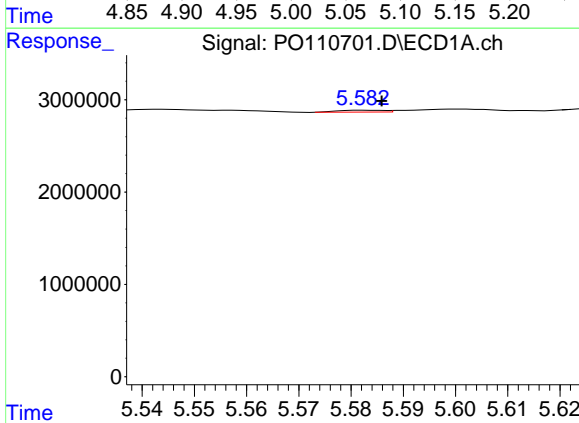
R.T.: 5.233 min  
 Delta R.T.: 0.000 min  
 Response: 250697  
 Conc: 0.68 ng/ml

Instrument :  
 ECD\_O  
 ClientSampleId :



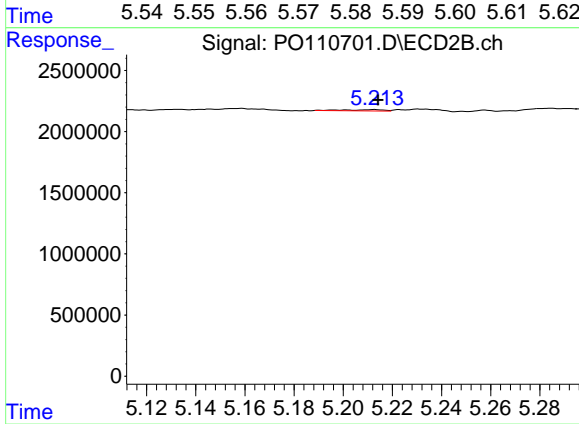
#23 AR-1248-3

R.T.: 5.059 min  
 Delta R.T.: 0.015 min  
 Response: 539424  
 Conc: 3.07 ng/ml



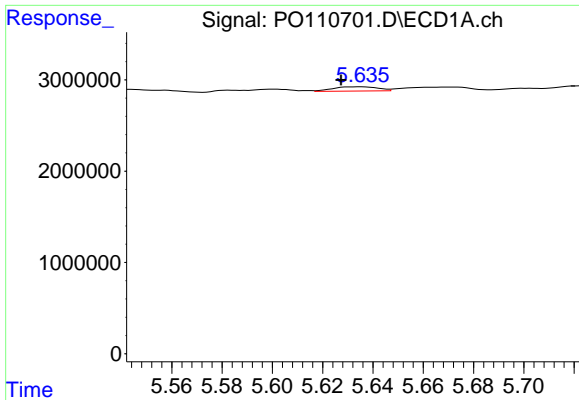
#24 AR-1248-4

R.T.: 5.583 min  
 Delta R.T.: -0.003 min  
 Response: 129282  
 Conc: 0.25 ng/ml



#24 AR-1248-4

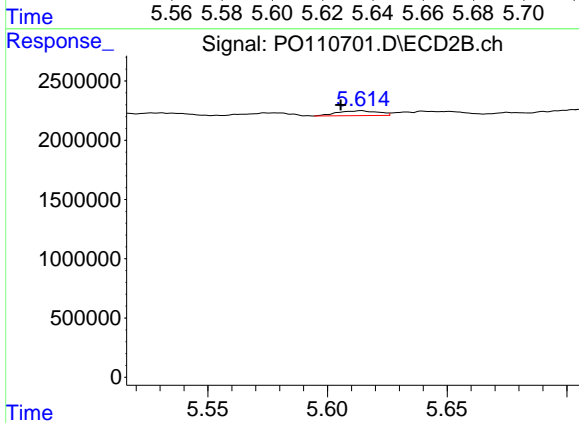
R.T.: 5.213 min  
 Delta R.T.: -0.001 min  
 Response: 110226  
 Conc: 0.54 ng/ml



#25 AR-1248-5

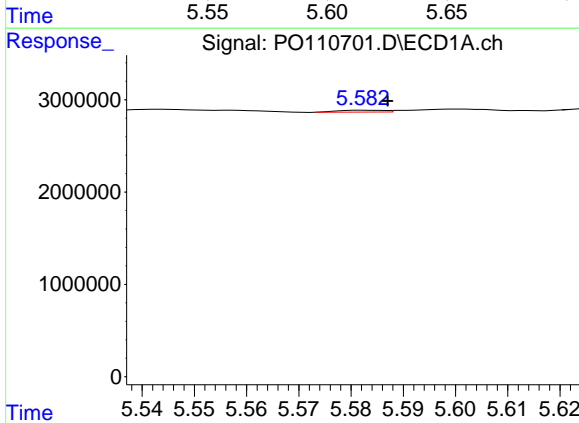
R.T.: 5.635 min  
 Delta R.T.: 0.008 min  
 Response: 576064  
 Conc: 1.56 ng/ml

Instrument :  
 ECD\_O  
 ClientSampleId :



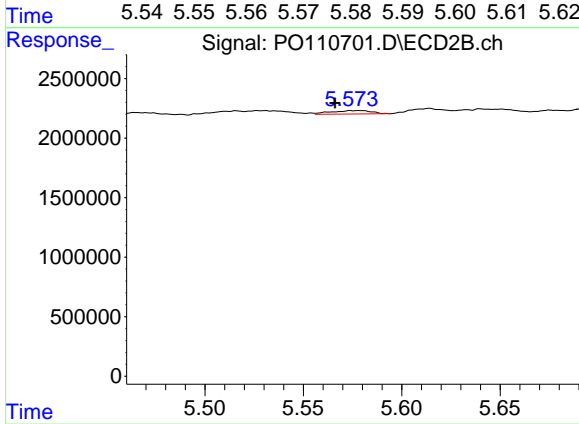
#25 AR-1248-5

R.T.: 5.614 min  
 Delta R.T.: 0.008 min  
 Response: 485329  
 Conc: 2.46 ng/ml



#26 AR-1254-1

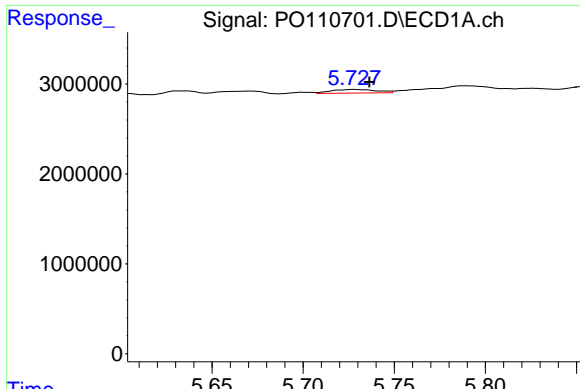
R.T.: 5.583 min  
 Delta R.T.: -0.004 min  
 Response: 129282  
 Conc: 0.23 ng/ml



#26 AR-1254-1

R.T.: 5.579 min  
 Delta R.T.: 0.013 min  
 Response: 405531  
 Conc: 1.35 ng/ml

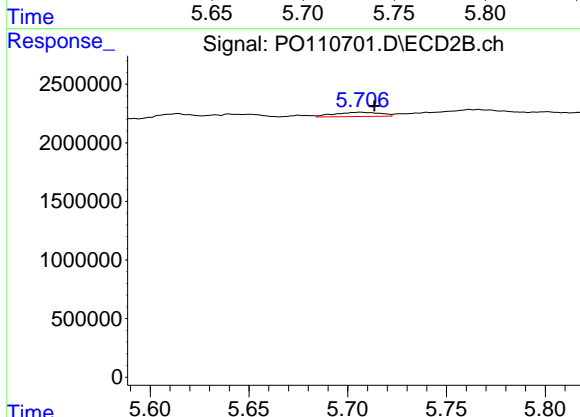




#27 AR-1254-2

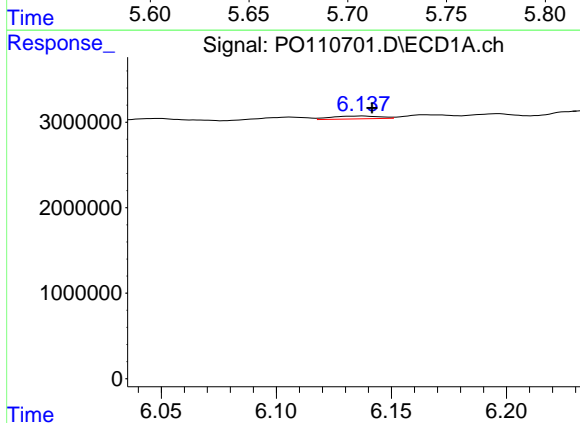
R.T.: 5.728 min  
 Delta R.T.: -0.009 min  
 Response: 694370  
 Conc: 1.43 ng/ml

Instrument :  
 ECD\_O  
 ClientSampleId :



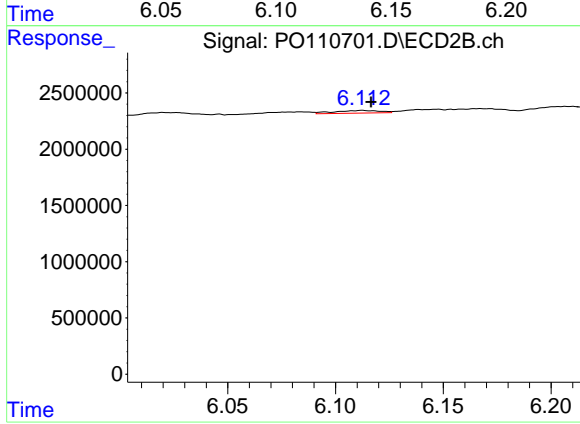
#27 AR-1254-2

R.T.: 5.706 min  
 Delta R.T.: -0.007 min  
 Response: 576994  
 Conc: 2.18 ng/ml



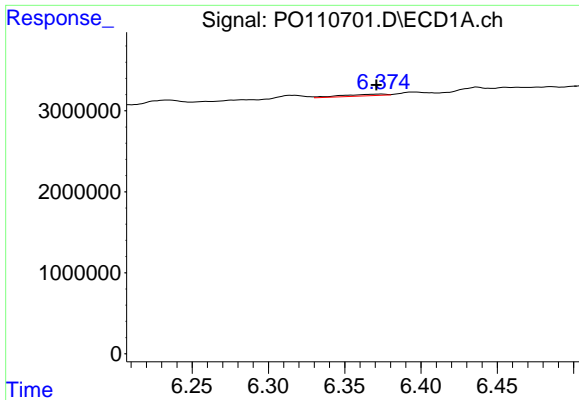
#28 AR-1254-3

R.T.: 6.137 min  
 Delta R.T.: -0.004 min  
 Response: 489923  
 Conc: 0.63 ng/ml



#28 AR-1254-3

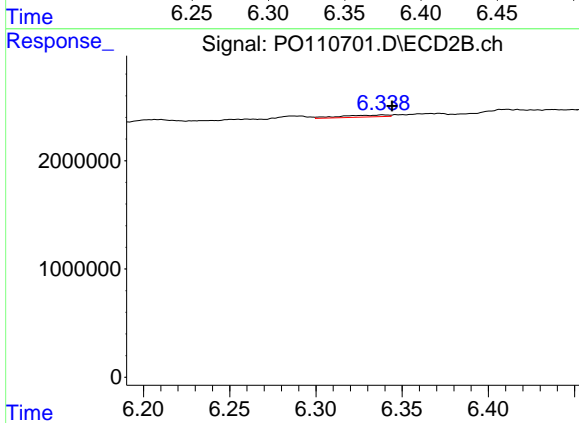
R.T.: 6.112 min  
 Delta R.T.: -0.004 min  
 Response: 355720  
 Conc: 0.88 ng/ml



#29 AR-1254-4

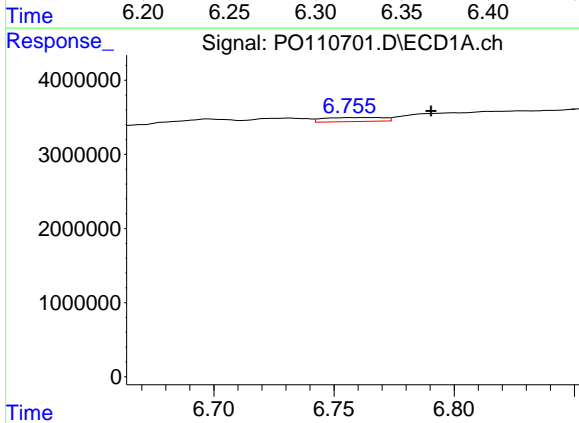
R.T.: 6.374 min  
 Delta R.T.: 0.003 min  
 Response: 386715  
 Conc: 0.79 ng/ml

Instrument :  
 ECD\_O  
 ClientSampleId :



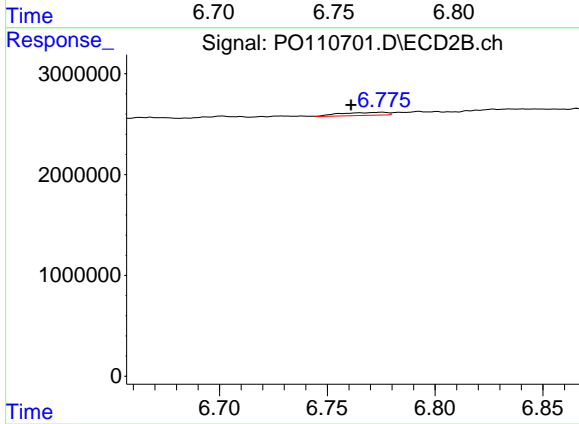
#29 AR-1254-4

R.T.: 6.339 min  
 Delta R.T.: -0.005 min  
 Response: 336388  
 Conc: 1.46 ng/ml



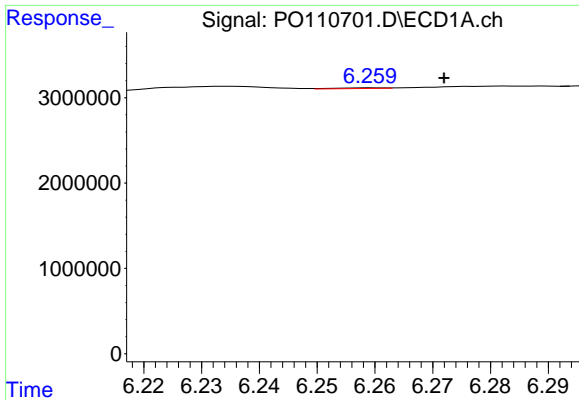
#30 AR-1254-5

R.T.: 6.757 min  
 Delta R.T.: -0.034 min  
 Response: 940918  
 Conc: 1.34 ng/ml



#30 AR-1254-5

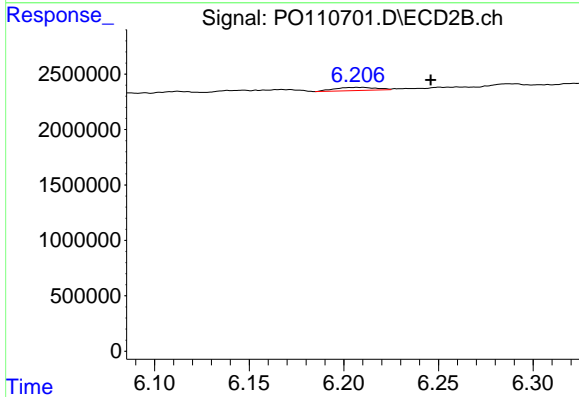
R.T.: 6.775 min  
 Delta R.T.: 0.014 min  
 Response: 450441  
 Conc: 1.36 ng/ml



#31 AR-1260-1

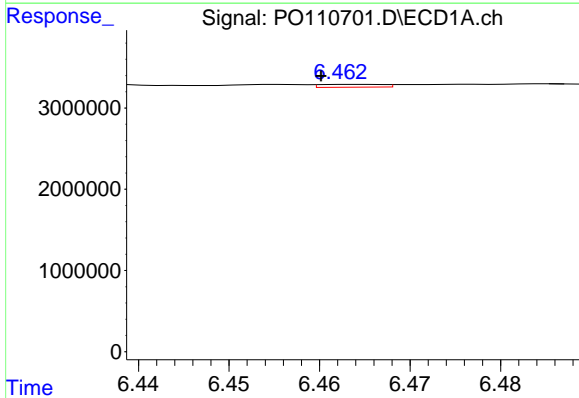
R.T.: 6.260 min  
 Delta R.T.: -0.012 min  
 Response: 44741  
 Conc: 0.09 ng/ml

Instrument :  
 ECD\_O  
 ClientSampleId :



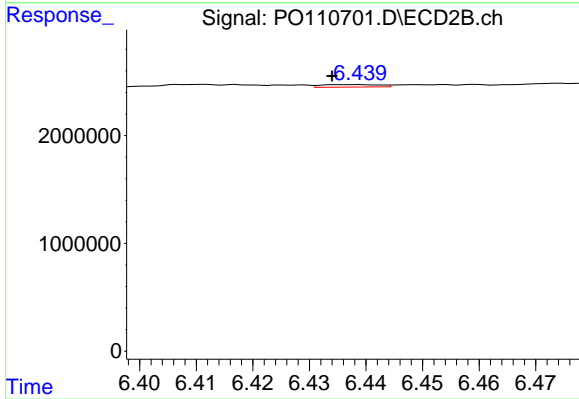
#31 AR-1260-1

R.T.: 6.208 min  
 Delta R.T.: -0.038 min  
 Response: 441385  
 Conc: 1.79 ng/ml



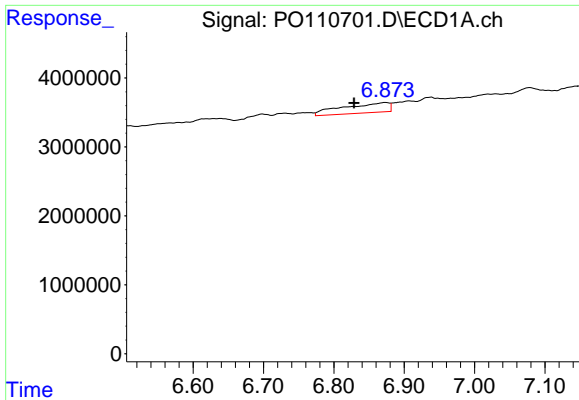
#32 AR-1260-2

R.T.: 6.464 min  
 Delta R.T.: 0.004 min  
 Response: 164326  
 Conc: 0.28 ng/ml



#32 AR-1260-2

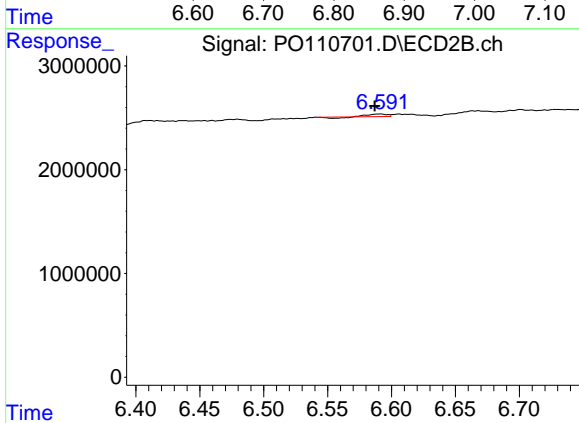
R.T.: 6.437 min  
 Delta R.T.: 0.003 min  
 Response: 164862  
 Conc: 0.57 ng/ml



#33 AR-1260-3

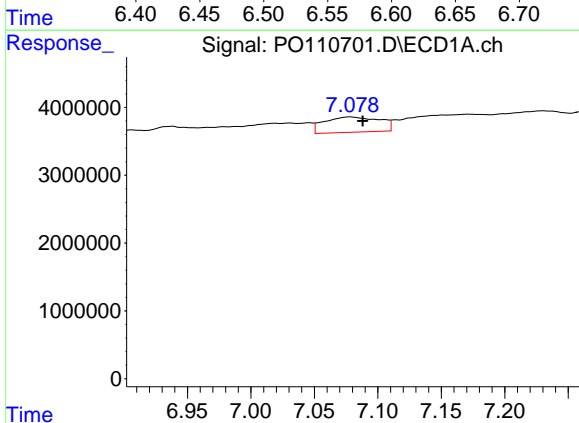
R.T.: 6.873 min  
 Delta R.T.: 0.045 min  
 Response: 6563587  
 Conc: 13.32 ng/ml

Instrument :  
 ECD\_O  
 ClientSampleId :



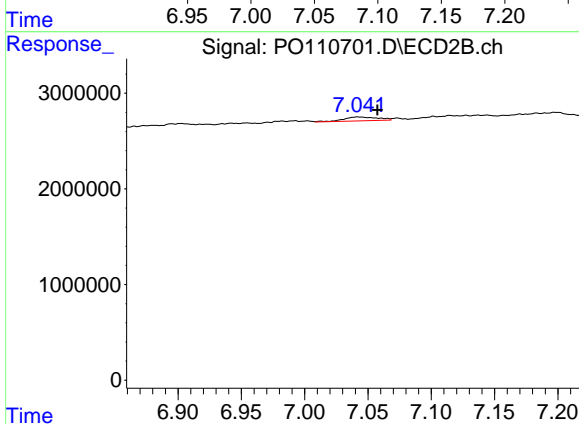
#33 AR-1260-3

R.T.: 6.591 min  
 Delta R.T.: 0.004 min  
 Response: 171833  
 Conc: 0.63 ng/ml



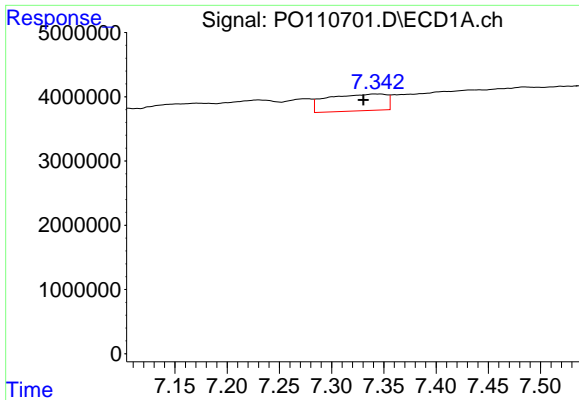
#34 AR-1260-4

R.T.: 7.078 min  
 Delta R.T.: -0.010 min  
 Response: 6847542  
 Conc: 16.13 ng/ml



#34 AR-1260-4

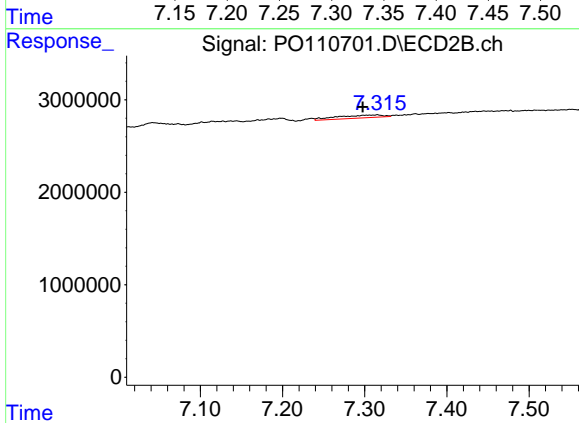
R.T.: 7.042 min  
 Delta R.T.: -0.015 min  
 Response: 782558  
 Conc: 3.90 ng/ml



#35 AR-1260-5

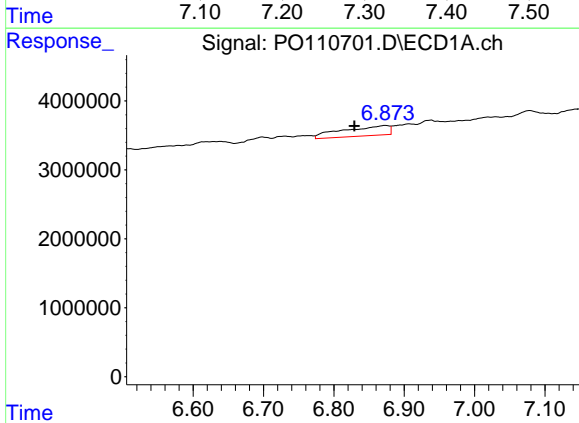
R.T.: 7.341 min  
 Delta R.T.: 0.011 min  
 Response: 10257693  
 Conc: 9.83 ng/ml

Instrument :  
 ECD\_O  
 ClientSampleId :



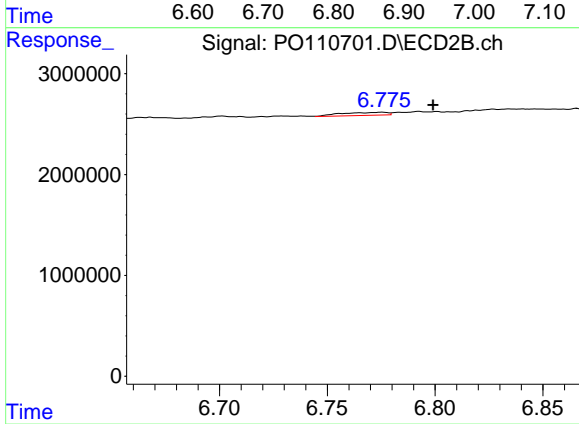
#35 AR-1260-5

R.T.: 7.315 min  
 Delta R.T.: 0.018 min  
 Response: 1197533  
 Conc: 2.61 ng/ml



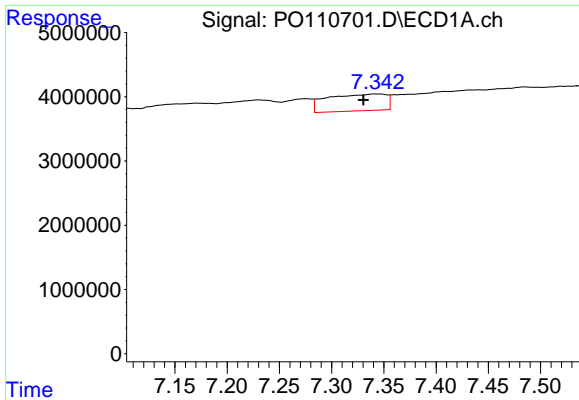
#36 AR-1262-1

R.T.: 6.873 min  
 Delta R.T.: 0.044 min  
 Response: 6563587  
 Conc: 9.36 ng/ml



#36 AR-1262-1

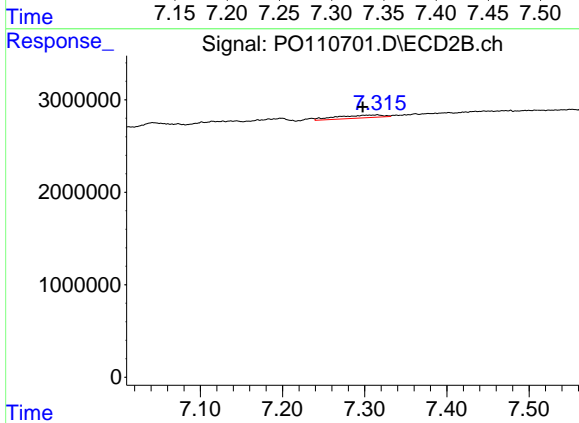
R.T.: 6.775 min  
 Delta R.T.: -0.024 min  
 Response: 450441  
 Conc: 1.37 ng/ml



#37 AR-1262-2

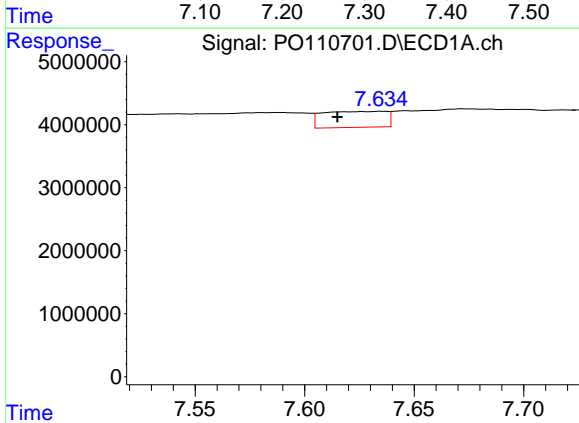
R.T.: 7.341 min  
 Delta R.T.: 0.011 min  
 Response: 10257693  
 Conc: 8.49 ng/ml

Instrument :  
 ECD\_O  
 ClientSampleId :



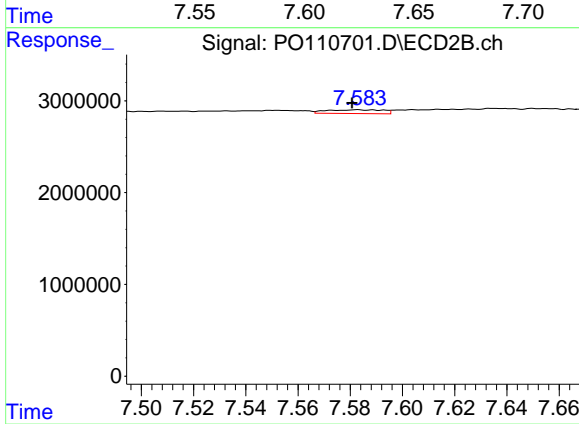
#37 AR-1262-2

R.T.: 7.315 min  
 Delta R.T.: 0.018 min  
 Response: 1197533  
 Conc: 2.36 ng/ml



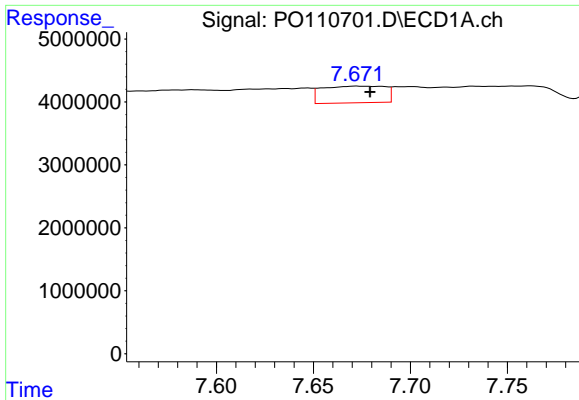
#38 AR-1262-3

R.T.: 7.635 min  
 Delta R.T.: 0.020 min  
 Response: 5100020  
 Conc: 10.02 ng/ml



#38 AR-1262-3

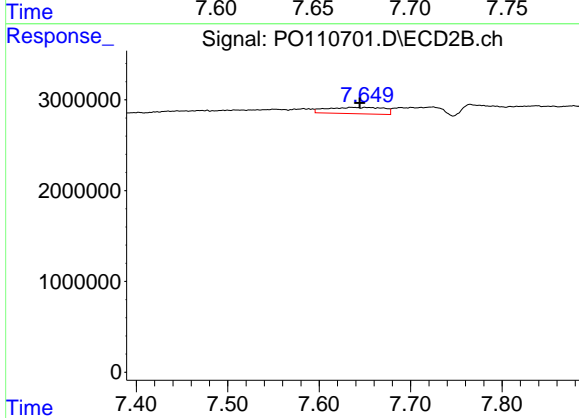
R.T.: 7.583 min  
 Delta R.T.: 0.002 min  
 Response: 627746  
 Conc: 3.24 ng/ml



#39 AR-1262-4

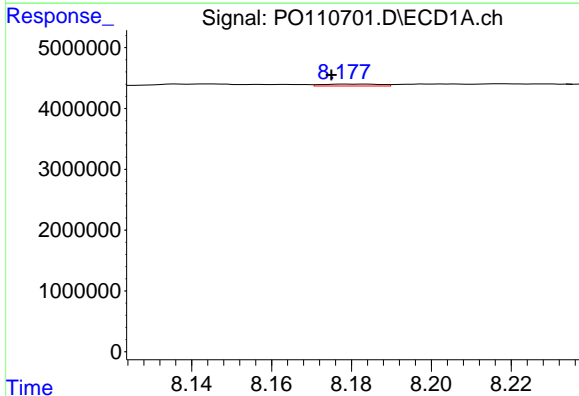
R.T.: 7.672 min  
 Delta R.T.: -0.007 min  
 Response: 5989826  
 Conc: 6.68 ng/ml

Instrument :  
 ECD\_O  
 ClientSampleId :



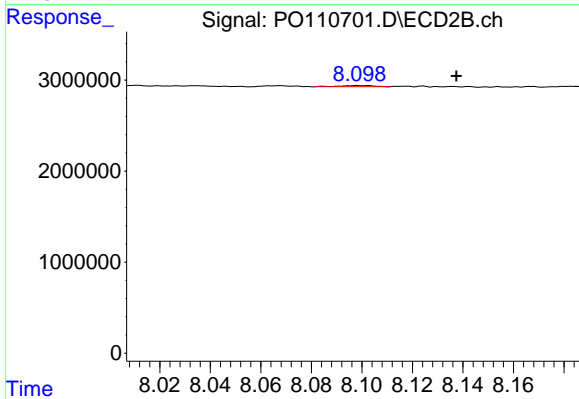
#39 AR-1262-4

R.T.: 7.635 min  
 Delta R.T.: -0.009 min  
 Response: 3011711  
 Conc: 8.68 ng/ml



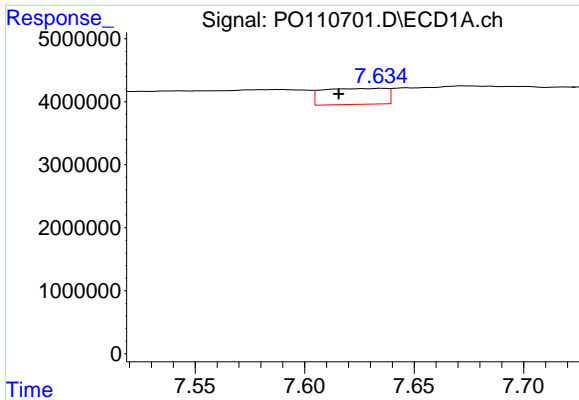
#40 AR-1262-5

R.T.: 8.178 min  
 Delta R.T.: 0.003 min  
 Response: 318384  
 Conc: 0.79 ng/ml



#40 AR-1262-5

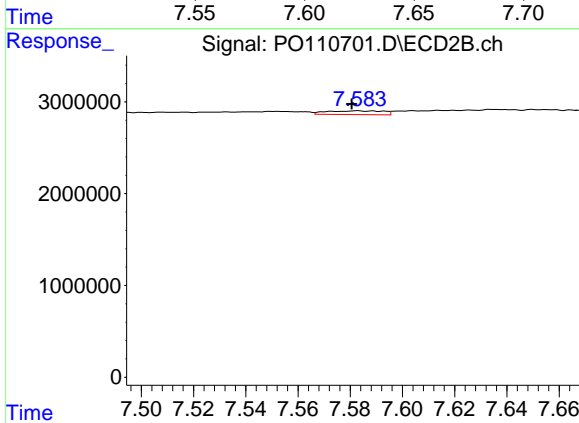
R.T.: 8.099 min  
 Delta R.T.: -0.039 min  
 Response: 111972  
 Conc: 0.90 ng/ml



#41 AR-1268-1

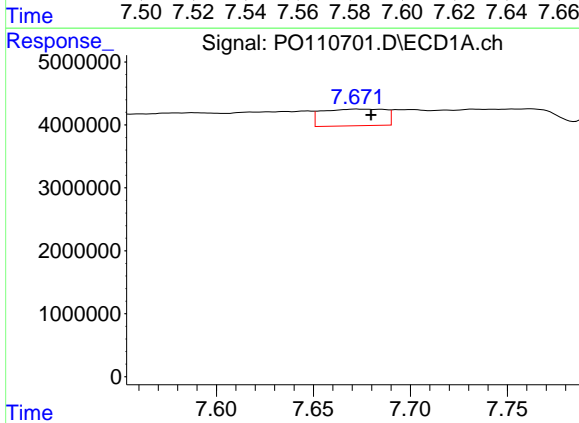
R.T.: 7.635 min  
 Delta R.T.: 0.020 min  
 Response: 5100020  
 Conc: 3.63 ng/ml

Instrument :  
 ECD\_O  
 ClientSampleId :



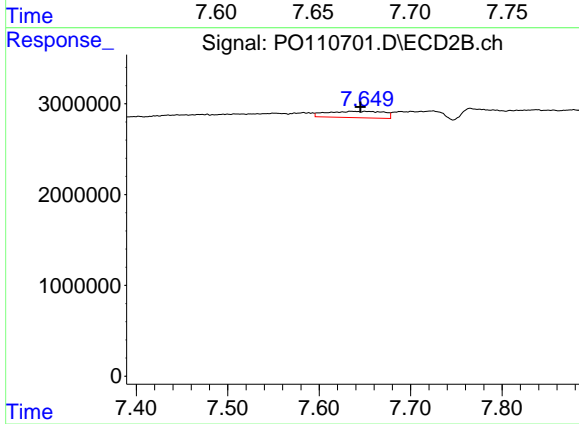
#41 AR-1268-1

R.T.: 7.583 min  
 Delta R.T.: 0.002 min  
 Response: 627746  
 Conc: 1.15 ng/ml



#42 AR-1268-2

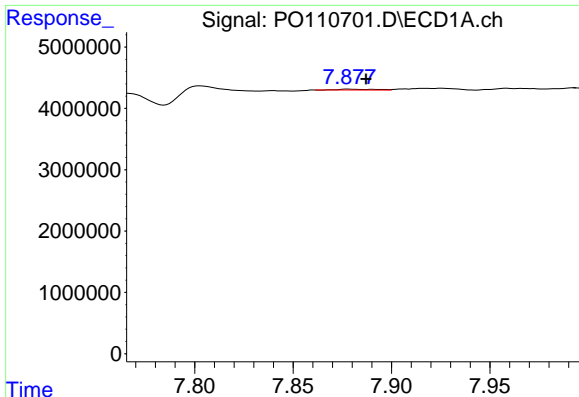
R.T.: 7.672 min  
 Delta R.T.: -0.008 min  
 Response: 5989826  
 Conc: 4.68 ng/ml



#42 AR-1268-2

R.T.: 7.635 min  
 Delta R.T.: -0.010 min  
 Response: 3011711  
 Conc: 6.05 ng/ml

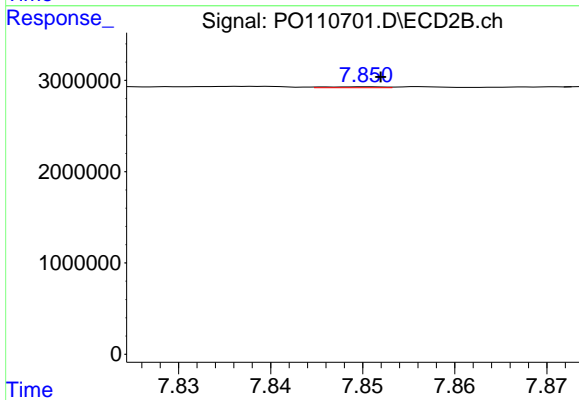




#43 AR-1268-3

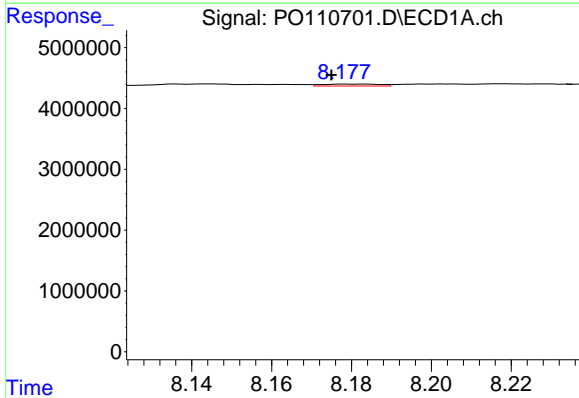
R.T.: 7.878 min  
 Delta R.T.: -0.009 min  
 Response: 168148  
 Conc: 0.16 ng/ml

Instrument :  
 ECD\_O  
 ClientSampleId :



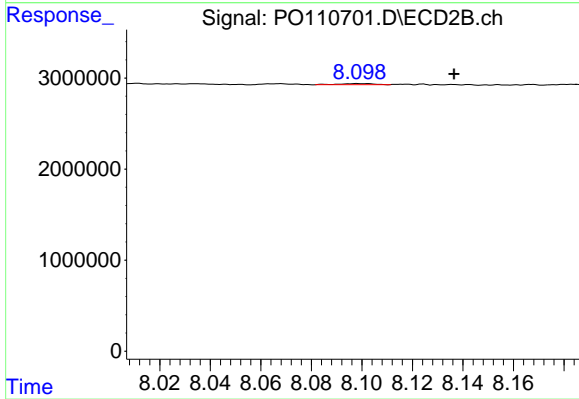
#43 AR-1268-3

R.T.: 7.850 min  
 Delta R.T.: -0.002 min  
 Response: 46164  
 Conc: 0.12 ng/ml



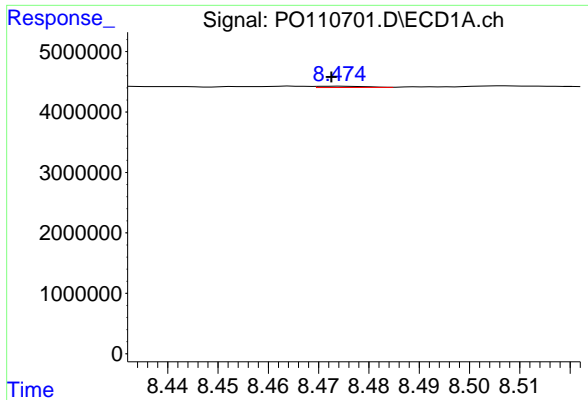
#44 AR-1268-4

R.T.: 8.178 min  
 Delta R.T.: 0.004 min  
 Response: 318384  
 Conc: 0.72 ng/ml



#44 AR-1268-4

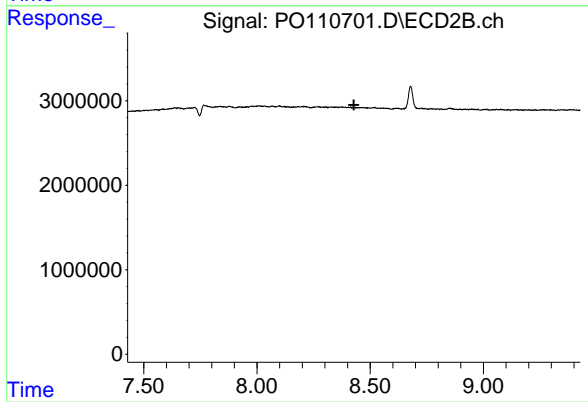
R.T.: 8.099 min  
 Delta R.T.: -0.038 min  
 Response: 111972  
 Conc: 0.79 ng/ml



#45 AR-1268-5

R.T.: 8.474 min  
 Delta R.T.: 0.002 min  
 Response: 146227  
 Conc: 0.05 ng/ml

Instrument :  
 ECD\_O  
 ClientSampleId :



#45 AR-1268-5

R.T.: 8.414 min  
 Delta R.T.: -0.014 min  
 Response: -24551  
 Conc: N.D.