

Data Path : Z:\pestpcbsrv\HPCHEM1\ECD_O\Data\P0042425\
 Data File : PO110710.D
 Signal(s) : Signal #1: ECD1A.ch Signal #2: ECD2B.ch
 Acq On : 25 Apr 2025 02:20
 Operator : YP/AJ
 Sample : Q1860-15DL 25X
 Misc :
 ALS Vial : 29 Sample Multiplier: 1

Instrument :
 ECD_O
 ClientSampleId :

Integration File signal 1: autoint1.e
 Integration File signal 2: autoint2.e
 Quant Time: Apr 25 02:49:17 2025
 Quant Method : Z:\pestpcbsrv\HPCHEM1\ECD_O\methods\P0041025.M
 Quant Title : GC EXTRACTABLES
 QLast Update : Fri Apr 11 02:12:41 2025
 Response via : Initial Calibration
 Integrator: ChemStation

Volume Inj. : 2 µl
 Signal #1 Phase : ZB-MR1 Signal #2 Phase: ZB-MR2
 Signal #1 Info : 30Mx0.32mmx 0.50µ Signal #2 Info : 30M x 0.32mm x 0.25µm

Compound	RT#1	RT#2	Resp#1	Resp#2	ng/ml	ng/ml
System Monitoring Compounds						
1) SA Tetrachlo...	3.686	3.683	5296371	3066265	0.605	0.615
2) SA Decachlor...	8.727	8.677	13827674	3666114	1.751	1.904
Target Compounds						
3) L1 AR-1016-1	4.777	4.762	167.8E6	84733533	511.508	482.786
4) L1 AR-1016-2	4.796	4.782	345.7E6	179.8E6	759.872	715.035
5) L1 AR-1016-3	4.852	4.957	78902076	82427384	244.637	607.375 #
6) L1 AR-1016-4	4.973	4.998	162.1E6	102.2E6	650.393	893.324 #
7) L1 AR-1016-5	5.229	5.211	248.5E6	117.1E6	923.650	785.360
8) L2 AR-1221-1	3.891	3.884	1894845	1143464	16.053	17.125
9) L2 AR-1221-2	3.986	3.979	2853769	1598786	32.303	31.914
10) L2 AR-1221-3	4.061	4.053	12680457	6745505	48.192	45.220
11) L3 AR-1232-1	4.061	4.053	12680457	6745505	61.909	58.644
12) L3 AR-1232-2	4.551	4.782	129.5E6	179.8E6	1213.121	1621.803 #
13) L3 AR-1232-3	4.796	4.957	345.7E6	82427384	1730.404	1440.960
14) L3 AR-1232-4	4.973	5.040	162.1E6	110.6E6	1584.138	2049.704 #
15) L3 AR-1232-5	5.015	5.211	195.7E6	117.1E6	2840.242	2049.092 #
16) L4 AR-1242-1	4.777	4.762	167.8E6	84733533	604.785	566.770
17) L4 AR-1242-2	4.796	4.782	345.7E6	179.8E6	896.128	842.724
18) L4 AR-1242-3	4.852	4.957	78902076	82427384	283.614	713.149 #
19) L4 AR-1242-4	4.973	5.040	162.1E6	110.6E6	766.698	920.808
20) L4 AR-1242-5	5.625	5.562	245.0E6	174.1E6	1082.374	1199.975
21) L5 AR-1248-1	4.777	4.762	167.8E6	84733533	788.625	735.969
22) L5 AR-1248-2	5.015	4.998	195.7E6	102.2E6	661.314	627.247
23) L5 AR-1248-3	5.229	5.040	248.5E6	110.6E6	671.617	628.857
24) L5 AR-1248-4	5.584	5.211	341.7E6	117.1E6	656.989	574.811
25) L5 AR-1248-5	5.625	5.603	245.0E6	123.3E6	663.307	624.760
26) L6 AR-1254-1	5.584	5.562	341.7E6	174.1E6	612.296	577.490
27) L6 AR-1254-2	5.733	5.710	167.6E6	83922533	345.143	317.065
28) L6 AR-1254-3	6.138	6.112	292.7E6	145.5E6	373.676	360.639
29) L6 AR-1254-4	6.367	6.340	142.6E6	67372073	292.496	293.288
30) L6 AR-1254-5	6.786	6.756	212.8E6	98138047	303.662	295.337
31) L7 AR-1260-1	6.270	6.243	158.7E6	77957001	335.922	316.945
32) L7 AR-1260-2	6.458	6.430	126.0E6	54265467	214.926	185.999
33) L7 AR-1260-3	6.825	6.582	80555606	54529384	163.441	201.302
34) L7 AR-1260-4	7.085	7.053	61175492	24901070	144.138	124.108
35) L7 AR-1260-5	7.328	7.294	147.2E6	79861474	141.083	174.044
36) L8 AR-1262-1	6.825	6.794	80555606	36043440	114.840	109.442
37) L8 AR-1262-2	7.328	7.294	147.2E6	79861474	121.894	157.066 #
38) L8 AR-1262-3	7.612	7.577	107.2E6	35107270	210.604	181.311
39) L8 AR-1262-4	7.676	7.641	144.7E6	55785956	161.456	160.742
40) L8 AR-1262-5	8.173	8.133	62181247	19766898	154.298	158.649
41) L9 AR-1268-1	7.612	7.577	107.2E6	35107270	76.358	64.095

Data Path : Z:\pestpcbsrv\HPCHEM1\ECD_0\Data\P0042425\
 Data File : P0110710.D
 Signal(s) : Signal #1: ECD1A.ch Signal #2: ECD2B.ch
 Acq On : 25 Apr 2025 02:20
 Operator : YP/AJ
 Sample : Q1860-15DL 25X
 Misc :
 ALS Vial : 29 Sample Multiplier: 1

Instrument :
 ECD_0
 ClientSampleId :

Integration File signal 1: autoint1.e
 Integration File signal 2: autoint2.e
 Quant Time: Apr 25 02:49:17 2025
 Quant Method : Z:\pestpcbsrv\HPCHEM1\ECD_0\methods\P0041025.M
 Quant Title : GC EXTRACTABLES
 QLast Update : Fri Apr 11 02:12:41 2025
 Response via : Initial Calibration
 Integrator: ChemStation

Volume Inj. : 2 µl
 Signal #1 Phase : ZB-MR1 Signal #2 Phase: ZB-MR2
 Signal #1 Info : 30Mx0.32mmx 0.50µ Signal #2 Info : 30M x 0.32mm x 0.25µm

	Compound	RT#1	RT#2	Resp#1	Resp#2	ng/ml	ng/ml
42)	L9 AR-1268-2	7.676	7.641	144.7E6	55785956	113.076	112.135
43)	L9 AR-1268-3	7.884	7.847	17696747	7152546	16.968	19.250
44)	L9 AR-1268-4	8.173	8.133	62181247	19766898	139.998	140.053
45)	L9 AR-1268-5	8.469	8.425	88218041	24178140	27.398	30.714

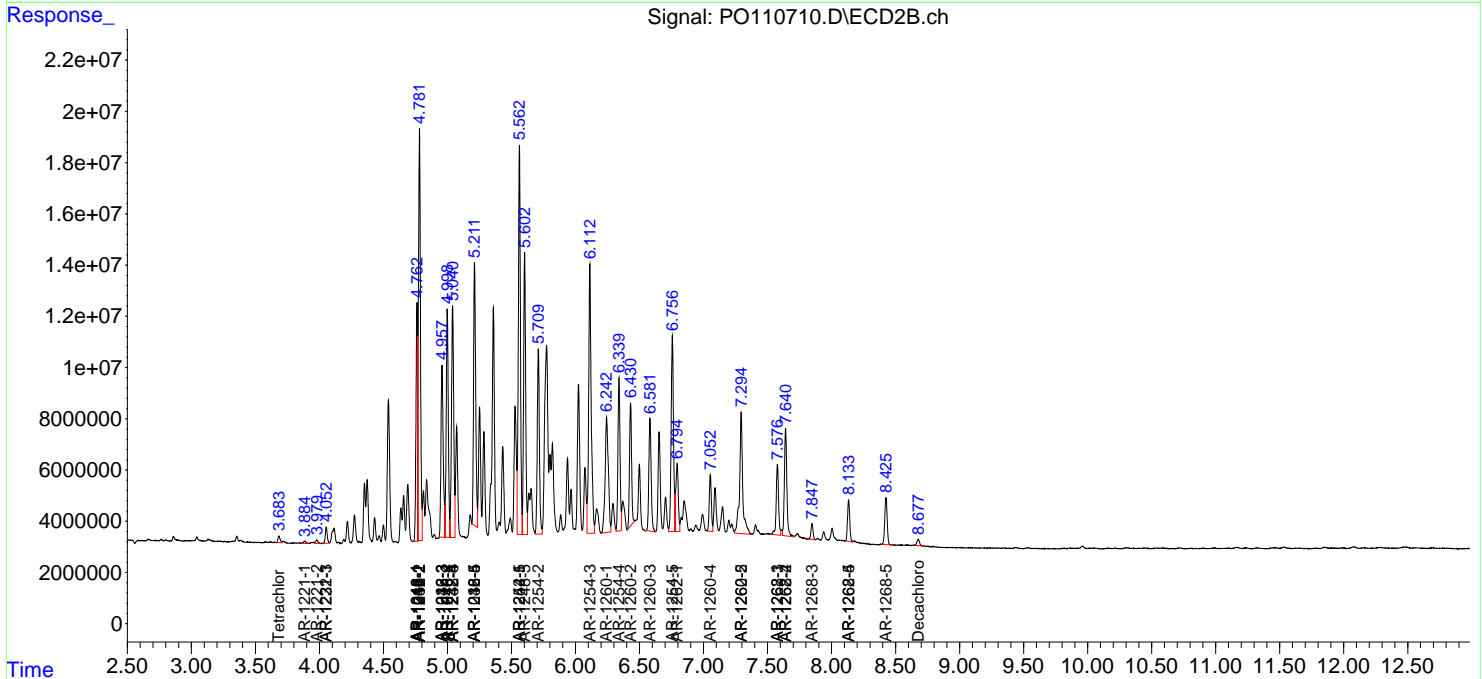
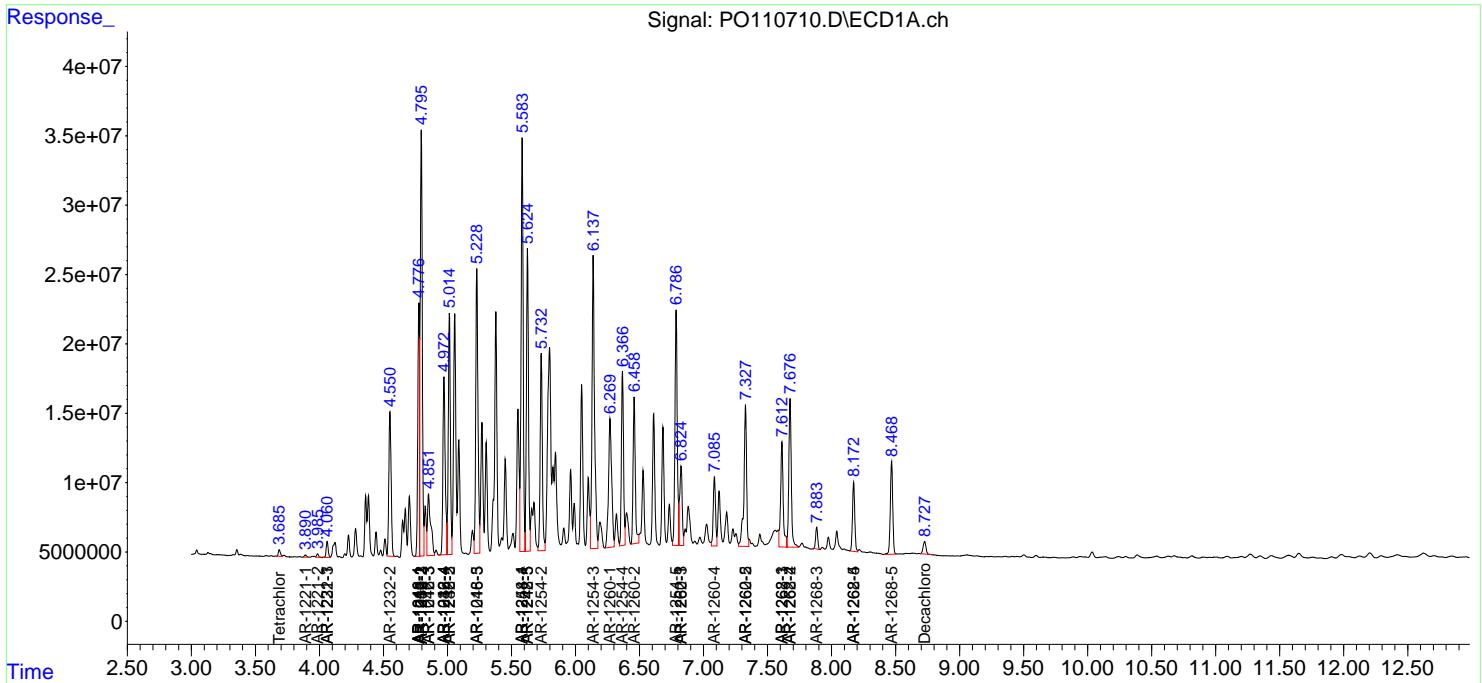
(f)=RT Delta > 1/2 Window (#)=Amounts differ by > 25% (m)=manual int.

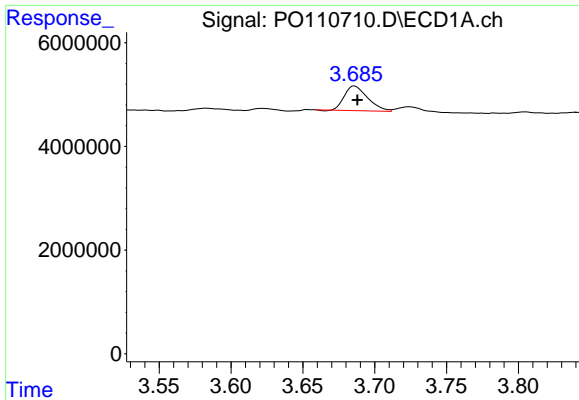
Data Path : Z:\pestpcbsrv\HPCHEM1\ECD_O\Data\PO042425\
Data File : PO110710.D
Signal(s) : Signal #1: ECD1A.ch Signal #2: ECD2B.ch
Acq On : 25 Apr 2025 02:20
Operator : YP/AJ
Sample : Q1860-15DL 25X
Misc :
ALS Vial : 29 Sample Multiplier: 1

Instrument :
ECD_O
ClientSampleId :

Integration File signal 1: autoint1.e
Integration File signal 2: autoint2.e
Quant Time: Apr 25 02:49:17 2025
Quant Method : Z:\pestpcbsrv\HPCHEM1\ECD_O\methods\PO041025.M
Quant Title : GC EXTRACTABLES
QLast Update : Fri Apr 11 02:12:41 2025
Response via : Initial Calibration
Integrator: ChemStation

Volume Inj. : 2 µl
Signal #1 Phase : ZB-MR1 Signal #2 Phase: ZB-MR2
Signal #1 Info : 30Mx0.32mmx 0.50µ Signal #2 Info : 30M x 0.32mm x 0.25µm

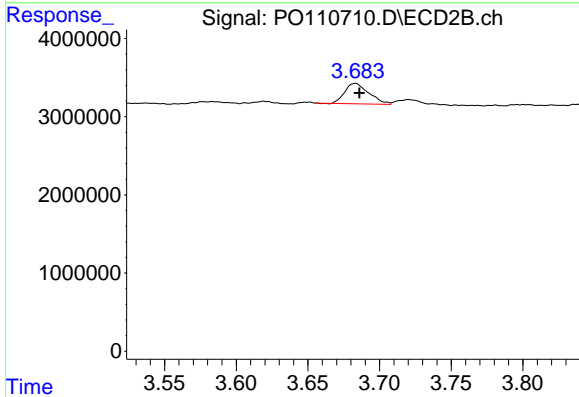




#1 Tetrachloro-m-xylene

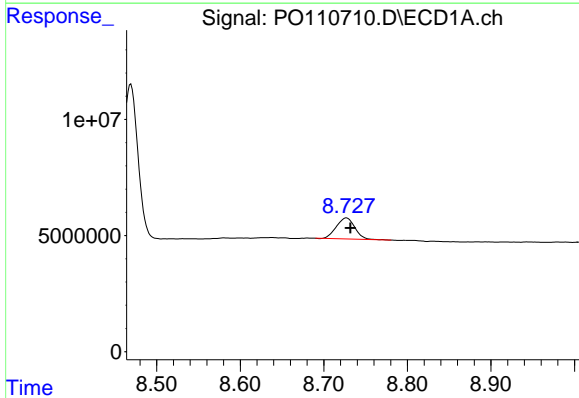
R.T.: 3.686 min
 Delta R.T.: -0.002 min
 Response: 5296371
 Conc: 0.61 ng/ml

Instrument :
 ECD_O
 ClientSampleId :



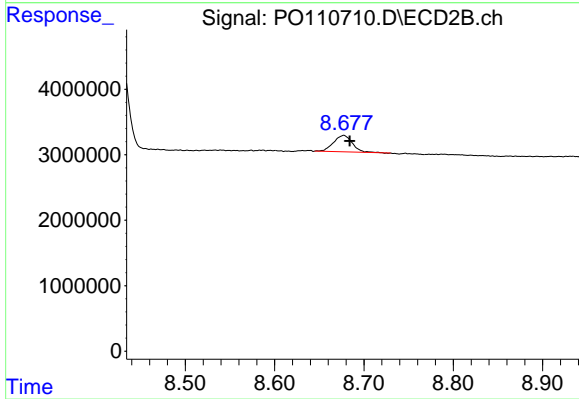
#1 Tetrachloro-m-xylene

R.T.: 3.683 min
 Delta R.T.: -0.003 min
 Response: 3066265
 Conc: 0.61 ng/ml



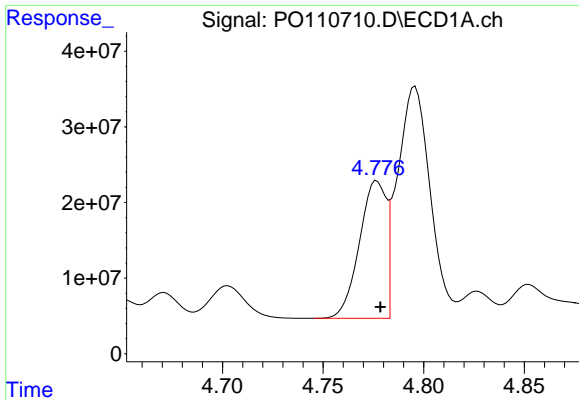
#2 Decachlorobiphenyl

R.T.: 8.727 min
 Delta R.T.: -0.005 min
 Response: 13827674
 Conc: 1.75 ng/ml



#2 Decachlorobiphenyl

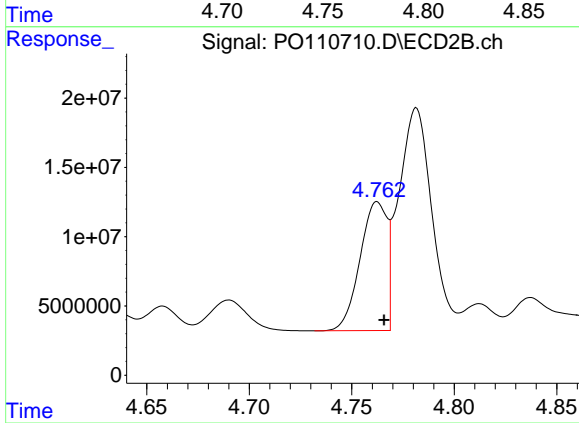
R.T.: 8.677 min
 Delta R.T.: -0.007 min
 Response: 3666114
 Conc: 1.90 ng/ml



#3 AR-1016-1

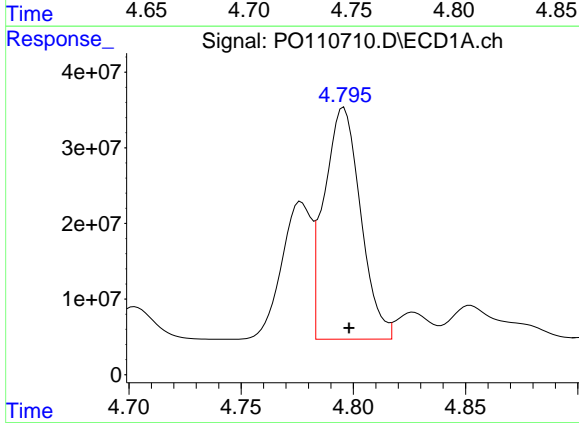
R.T.: 4.777 min
Delta R.T.: -0.002 min
Response: 167847951
Conc: 511.51 ng/ml

Instrument :
ECD_O
ClientSampleId :



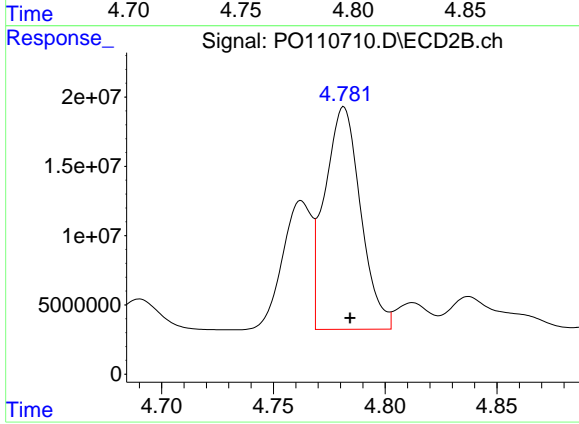
#3 AR-1016-1

R.T.: 4.762 min
Delta R.T.: -0.003 min
Response: 84733533
Conc: 482.79 ng/ml



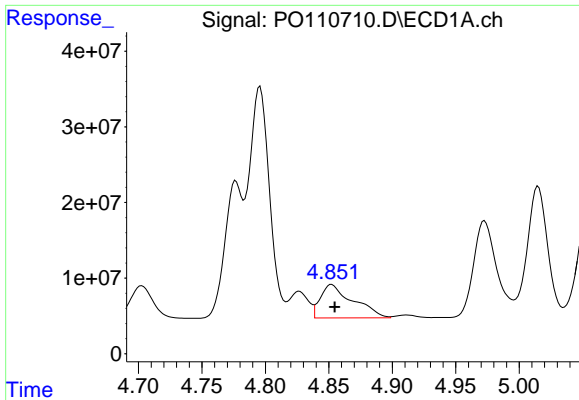
#4 AR-1016-2

R.T.: 4.796 min
Delta R.T.: -0.002 min
Response: 345702601
Conc: 759.87 ng/ml



#4 AR-1016-2

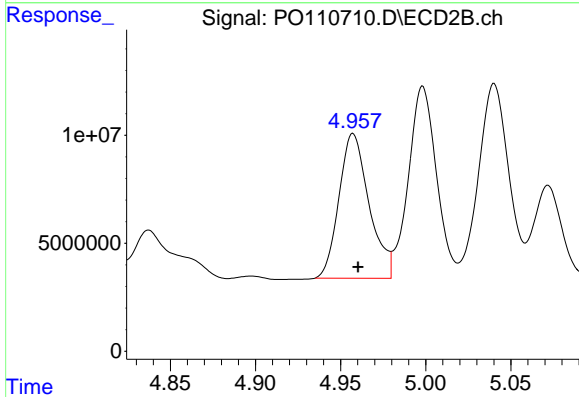
R.T.: 4.782 min
Delta R.T.: -0.003 min
Response: 179806231
Conc: 715.03 ng/ml



#5 AR-1016-3

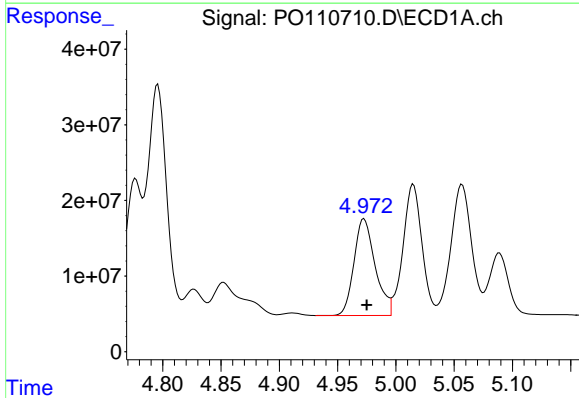
R.T.: 4.852 min
Delta R.T.: -0.002 min
Response: 78902076
Conc: 244.64 ng/ml

Instrument :
ECD_O
ClientSampleId :



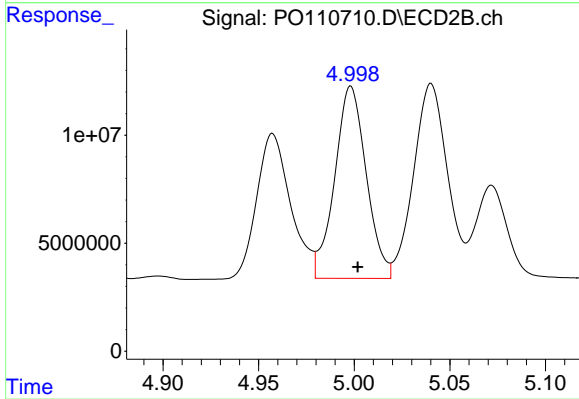
#5 AR-1016-3

R.T.: 4.957 min
Delta R.T.: -0.003 min
Response: 82427384
Conc: 607.37 ng/ml



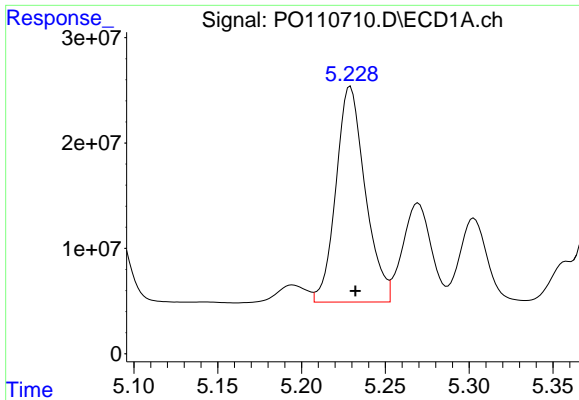
#6 AR-1016-4

R.T.: 4.973 min
Delta R.T.: -0.002 min
Response: 162054831
Conc: 650.39 ng/ml



#6 AR-1016-4

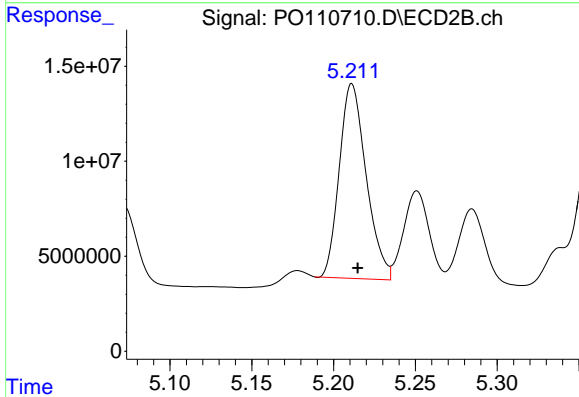
R.T.: 4.998 min
Delta R.T.: -0.004 min
Response: 102167577
Conc: 893.32 ng/ml



#7 AR-1016-5

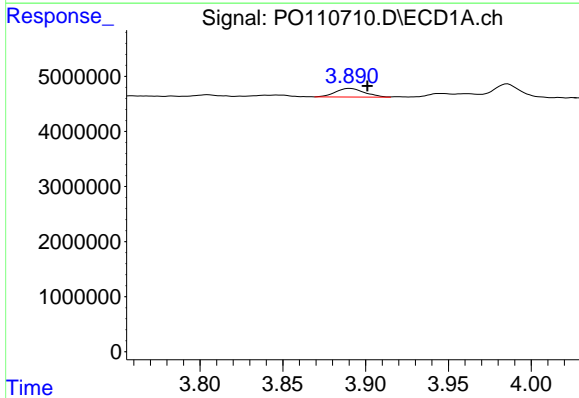
R.T.: 5.229 min
 Delta R.T.: -0.003 min
 Response: 248472535
 Conc: 923.65 ng/ml

Instrument :
 ECD_O
 ClientSampleId :



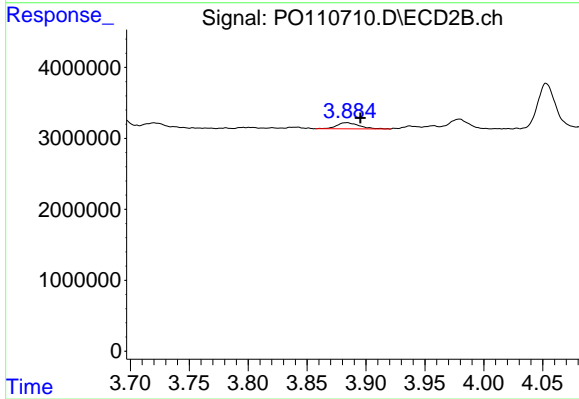
#7 AR-1016-5

R.T.: 5.211 min
 Delta R.T.: -0.004 min
 Response: 117076719
 Conc: 785.36 ng/ml



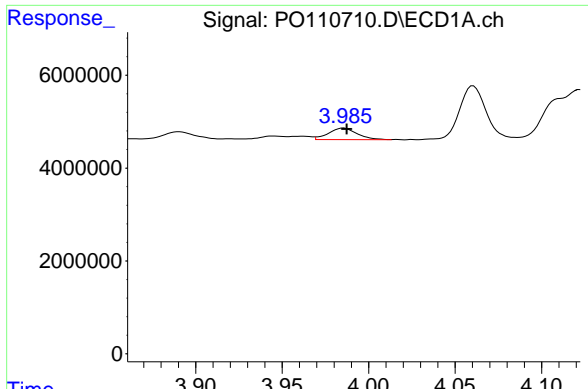
#8 AR-1221-1

R.T.: 3.891 min
 Delta R.T.: -0.011 min
 Response: 1894845
 Conc: 16.05 ng/ml



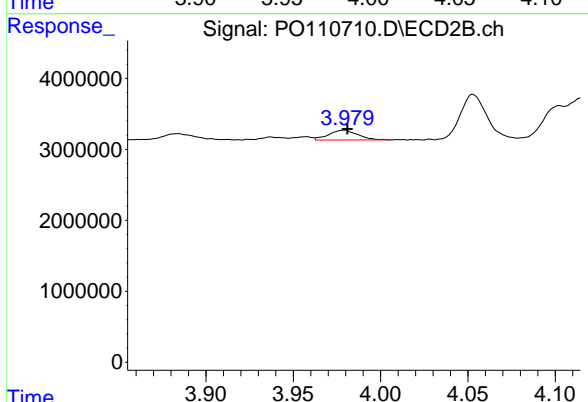
#8 AR-1221-1

R.T.: 3.884 min
 Delta R.T.: -0.012 min
 Response: 1143464
 Conc: 17.12 ng/ml

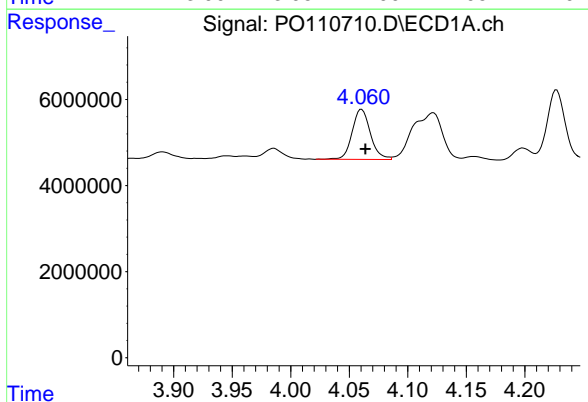


#9 AR-1221-2
 R.T.: 3.986 min
 Delta R.T.: -0.002 min
 Response: 2853769
 Conc: 32.30 ng/ml

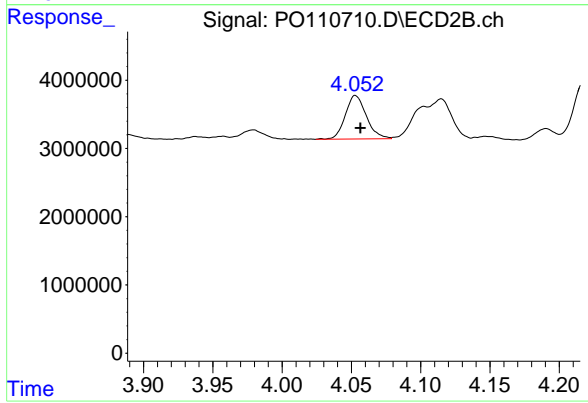
Instrument :
 ECD_O
 ClientSampleId :



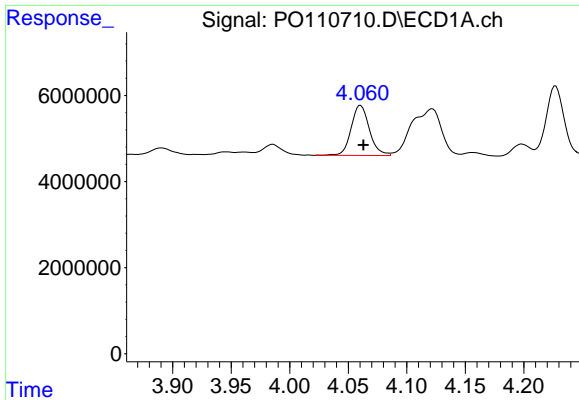
#9 AR-1221-2
 R.T.: 3.979 min
 Delta R.T.: -0.002 min
 Response: 1598786
 Conc: 31.91 ng/ml



#10 AR-1221-3
 R.T.: 4.061 min
 Delta R.T.: -0.003 min
 Response: 12680457
 Conc: 48.19 ng/ml



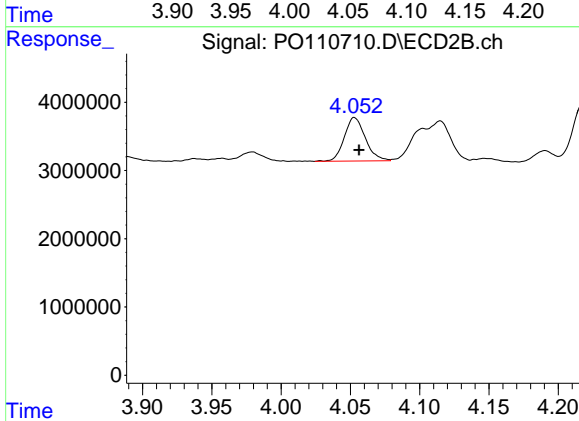
#10 AR-1221-3
 R.T.: 4.053 min
 Delta R.T.: -0.004 min
 Response: 6745505
 Conc: 45.22 ng/ml



#11 AR-1232-1

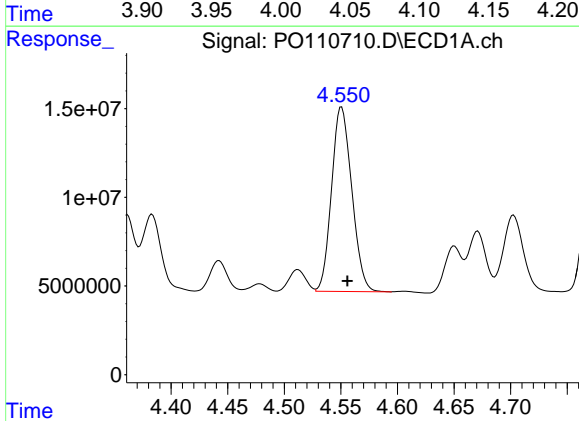
R.T.: 4.061 min
 Delta R.T.: -0.002 min
 Response: 12680457
 Conc: 61.91 ng/ml

Instrument :
 ECD_O
 ClientSampleId :



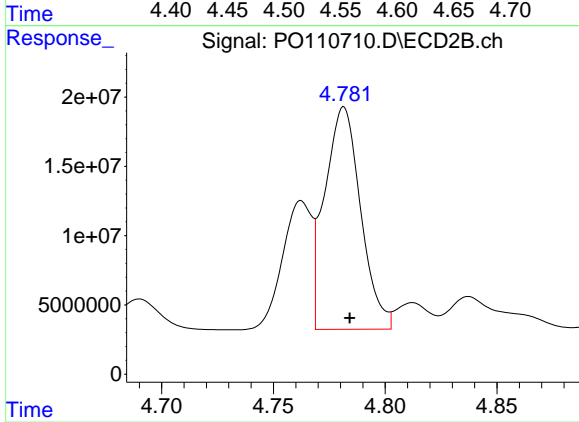
#11 AR-1232-1

R.T.: 4.053 min
 Delta R.T.: -0.003 min
 Response: 6745505
 Conc: 58.64 ng/ml



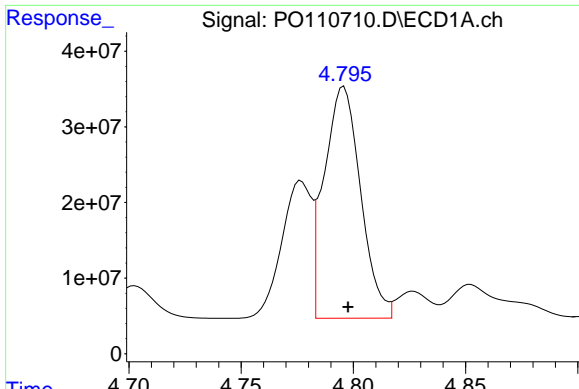
#12 AR-1232-2

R.T.: 4.551 min
 Delta R.T.: -0.005 min
 Response: 129450366
 Conc: 1213.12 ng/ml



#12 AR-1232-2

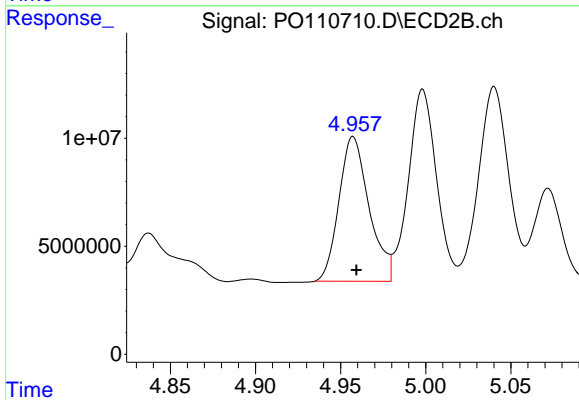
R.T.: 4.782 min
 Delta R.T.: -0.003 min
 Response: 179806231
 Conc: 1621.80 ng/ml



#13 AR-1232-3

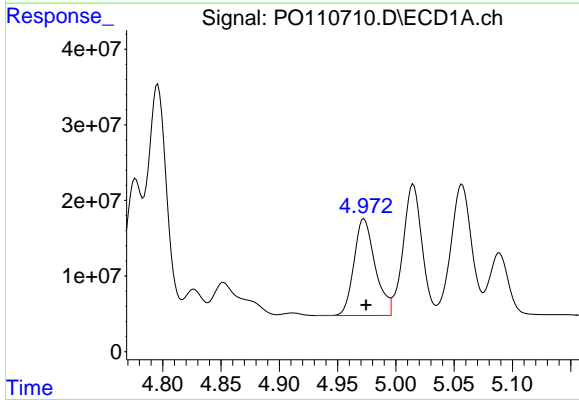
R.T.: 4.796 min
 Delta R.T.: -0.002 min
 Response: 345702601
 Conc: 1730.40 ng/ml

Instrument :
 ECD_O
 ClientSampleId :



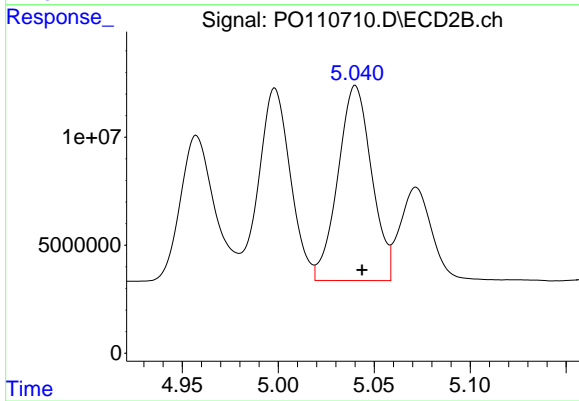
#13 AR-1232-3

R.T.: 4.957 min
 Delta R.T.: -0.002 min
 Response: 82427384
 Conc: 1440.96 ng/ml



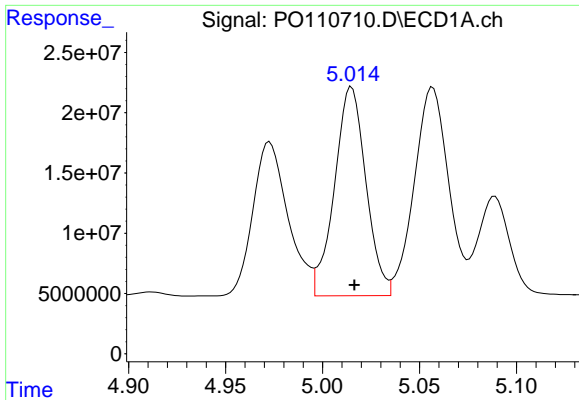
#14 AR-1232-4

R.T.: 4.973 min
 Delta R.T.: -0.002 min
 Response: 162054831
 Conc: 1584.14 ng/ml



#14 AR-1232-4

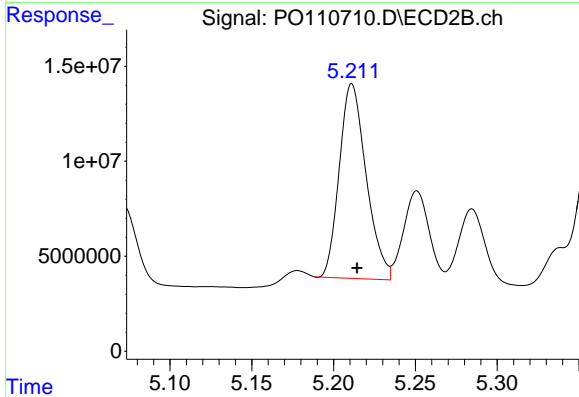
R.T.: 5.040 min
 Delta R.T.: -0.003 min
 Response: 110588420
 Conc: 2049.70 ng/ml



#15 AR-1232-5

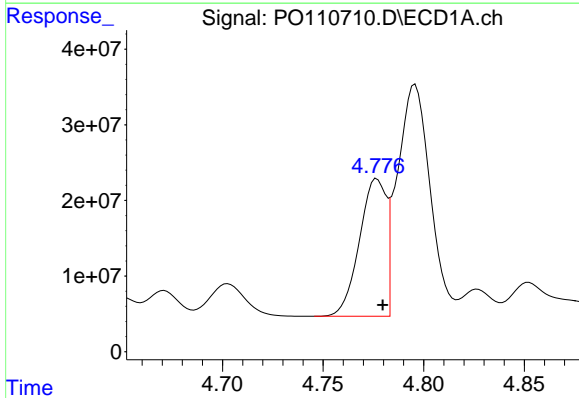
R.T.: 5.015 min
 Delta R.T.: -0.001 min
 Response: 195699376
 Conc: 2840.24 ng/ml

Instrument :
 ECD_O
 ClientSampleId :



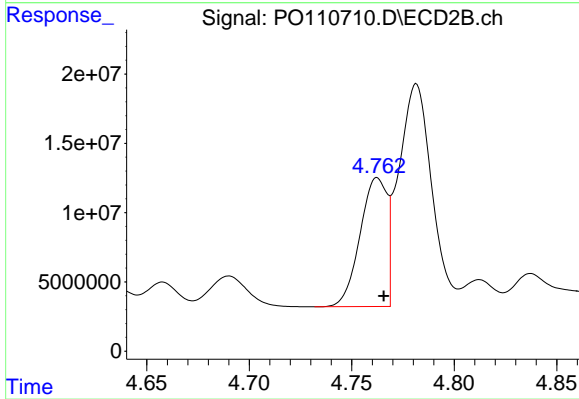
#15 AR-1232-5

R.T.: 5.211 min
 Delta R.T.: -0.003 min
 Response: 117076719
 Conc: 2049.09 ng/ml



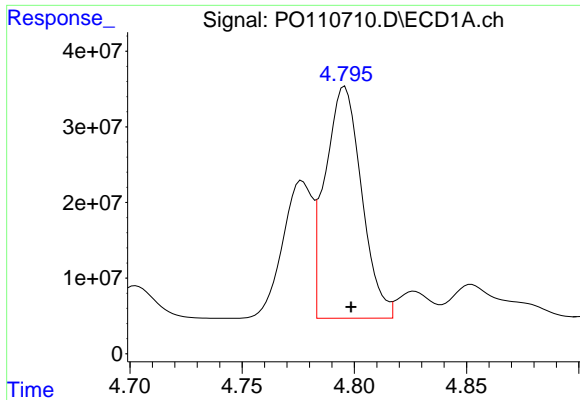
#16 AR-1242-1

R.T.: 4.777 min
 Delta R.T.: -0.003 min
 Response: 167847951
 Conc: 604.78 ng/ml



#16 AR-1242-1

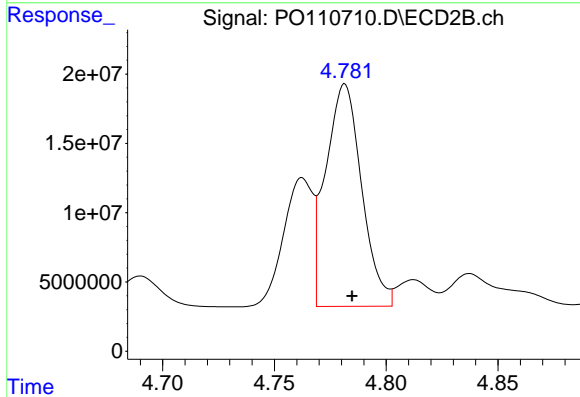
R.T.: 4.762 min
 Delta R.T.: -0.003 min
 Response: 84733533
 Conc: 566.77 ng/ml



#17 AR-1242-2

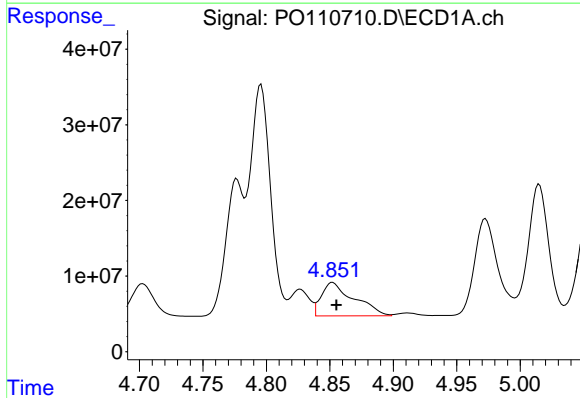
R.T.: 4.796 min
 Delta R.T.: -0.003 min
 Response: 345702601
 Conc: 896.13 ng/ml

Instrument :
 ECD_O
 ClientSampleId :



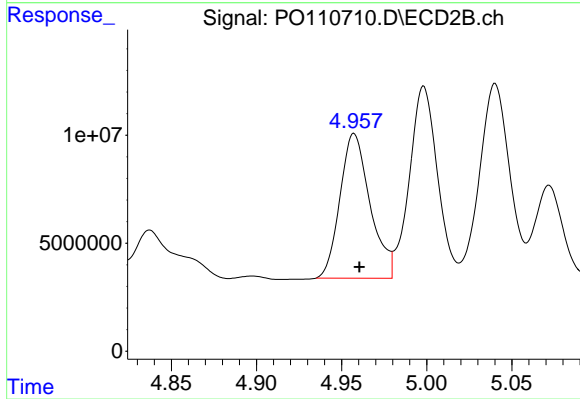
#17 AR-1242-2

R.T.: 4.782 min
 Delta R.T.: -0.003 min
 Response: 179806231
 Conc: 842.72 ng/ml



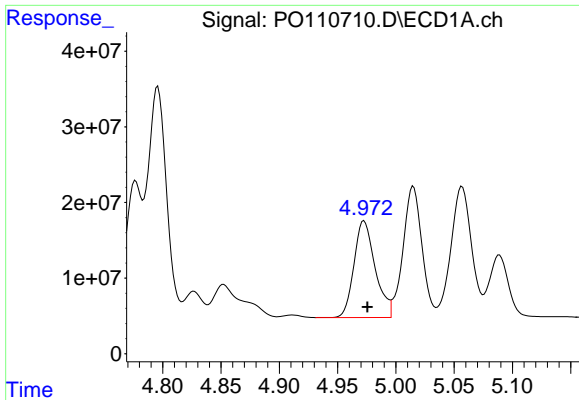
#18 AR-1242-3

R.T.: 4.852 min
 Delta R.T.: -0.003 min
 Response: 78902076
 Conc: 283.61 ng/ml



#18 AR-1242-3

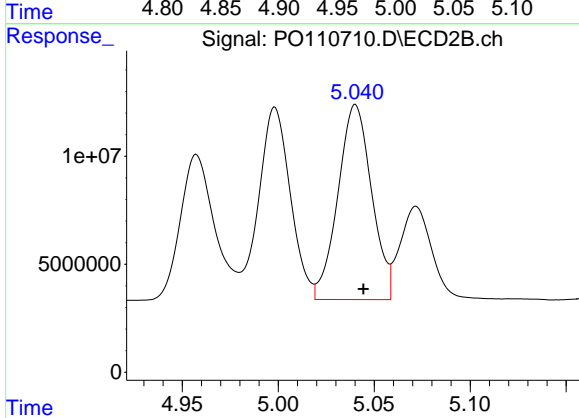
R.T.: 4.957 min
 Delta R.T.: -0.003 min
 Response: 82427384
 Conc: 713.15 ng/ml



#19 AR-1242-4

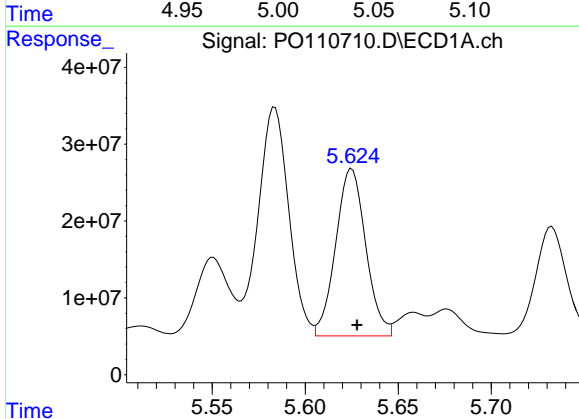
R.T.: 4.973 min
Delta R.T.: -0.003 min
Response: 162054831
Conc: 766.70 ng/ml

Instrument :
ECD_O
ClientSampleId :



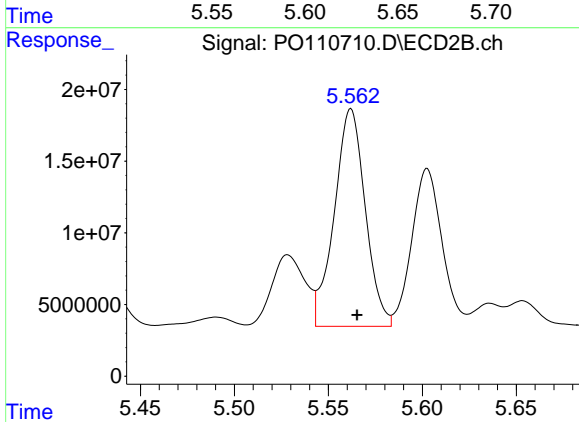
#19 AR-1242-4

R.T.: 5.040 min
Delta R.T.: -0.004 min
Response: 110588420
Conc: 920.81 ng/ml



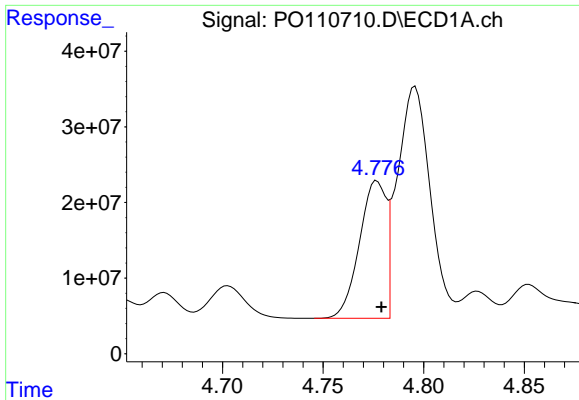
#20 AR-1242-5

R.T.: 5.625 min
Delta R.T.: -0.003 min
Response: 245042547
Conc: 1082.37 ng/ml



#20 AR-1242-5

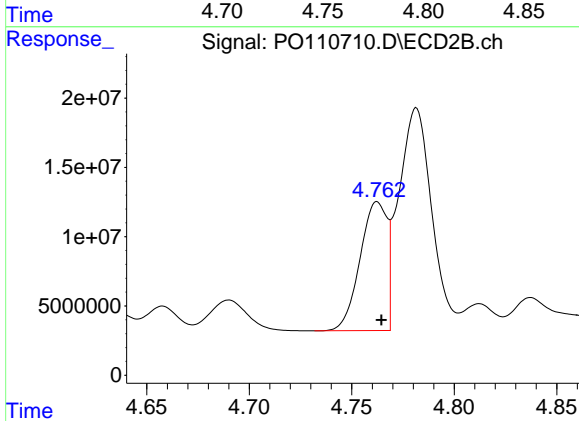
R.T.: 5.562 min
Delta R.T.: -0.003 min
Response: 174112677
Conc: 1199.98 ng/ml



#21 AR-1248-1

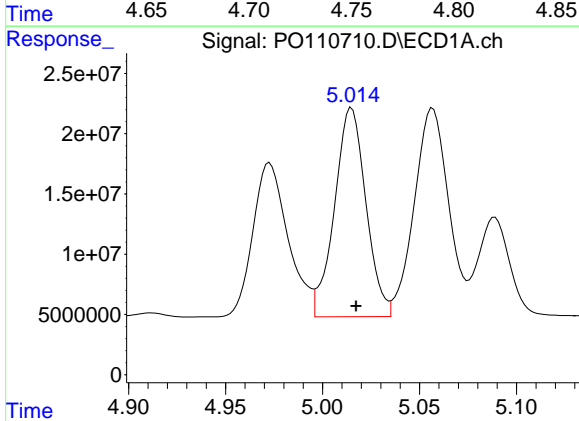
R.T.: 4.777 min
 Delta R.T.: -0.002 min
 Response: 167847951
 Conc: 788.62 ng/ml

Instrument :
 ECD_O
 ClientSampleId :



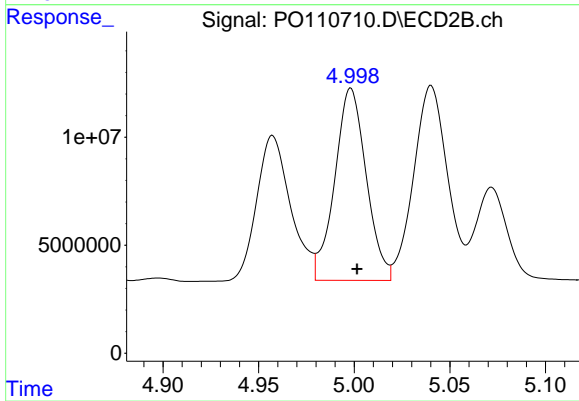
#21 AR-1248-1

R.T.: 4.762 min
 Delta R.T.: -0.002 min
 Response: 84733533
 Conc: 735.97 ng/ml



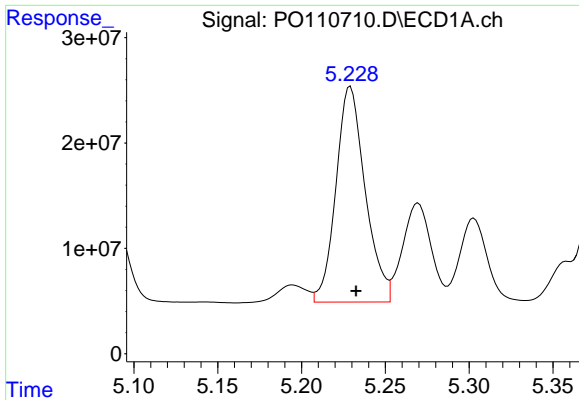
#22 AR-1248-2

R.T.: 5.015 min
 Delta R.T.: -0.002 min
 Response: 195699376
 Conc: 661.31 ng/ml



#22 AR-1248-2

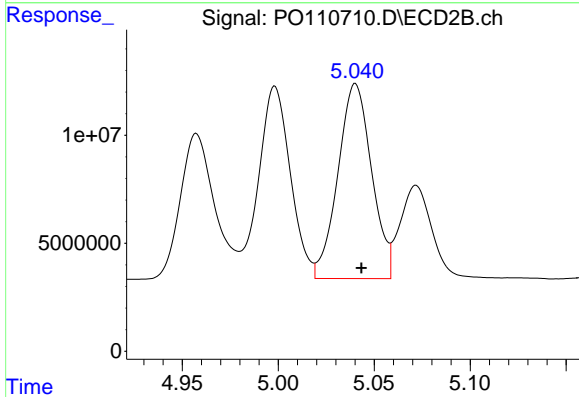
R.T.: 4.998 min
 Delta R.T.: -0.003 min
 Response: 102167577
 Conc: 627.25 ng/ml



#23 AR-1248-3

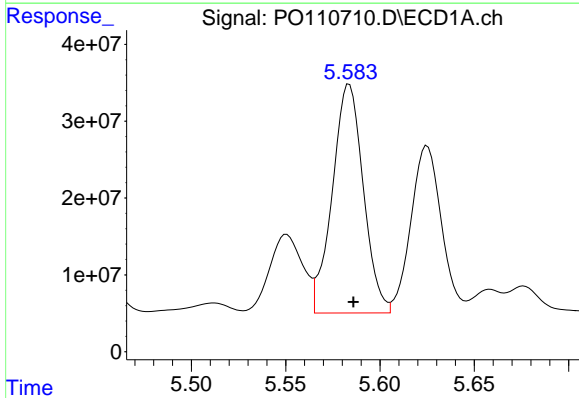
R.T.: 5.229 min
 Delta R.T.: -0.003 min
 Response: 248472535
 Conc: 671.62 ng/ml

Instrument :
 ECD_O
 ClientSampleId :



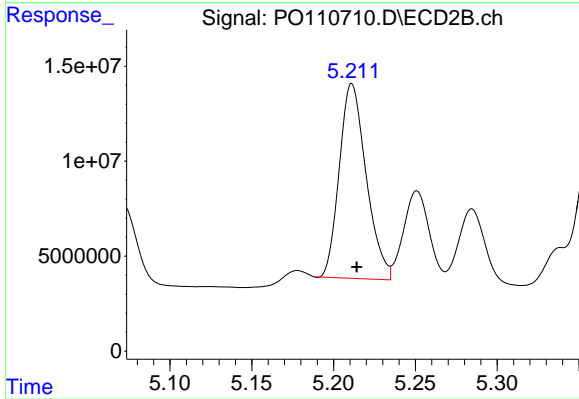
#23 AR-1248-3

R.T.: 5.040 min
 Delta R.T.: -0.003 min
 Response: 110588420
 Conc: 628.86 ng/ml



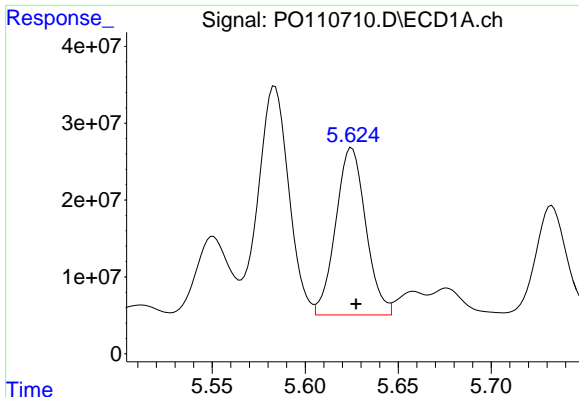
#24 AR-1248-4

R.T.: 5.584 min
 Delta R.T.: -0.002 min
 Response: 341654545
 Conc: 656.99 ng/ml



#24 AR-1248-4

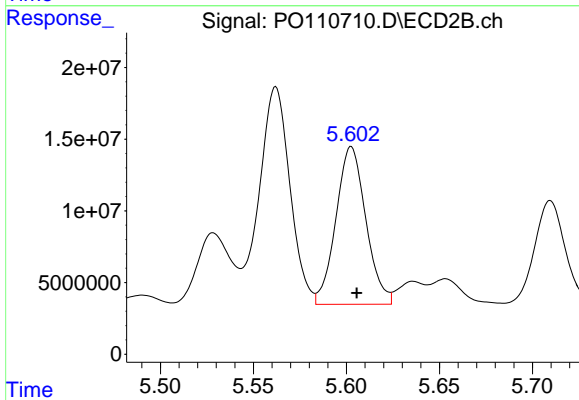
R.T.: 5.211 min
 Delta R.T.: -0.003 min
 Response: 117076719
 Conc: 574.81 ng/ml



#25 AR-1248-5

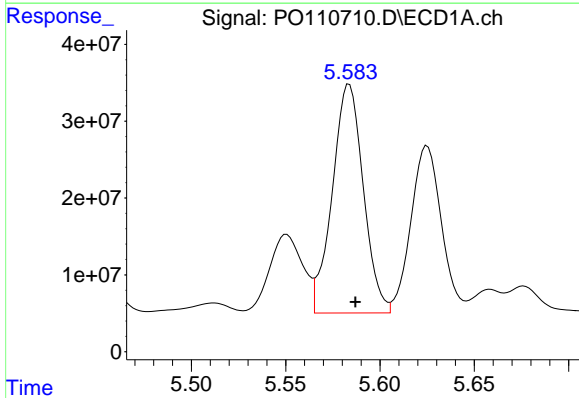
R.T.: 5.625 min
 Delta R.T.: -0.002 min
 Response: 245042547
 Conc: 663.31 ng/ml

Instrument :
 ECD_O
 ClientSampleId :



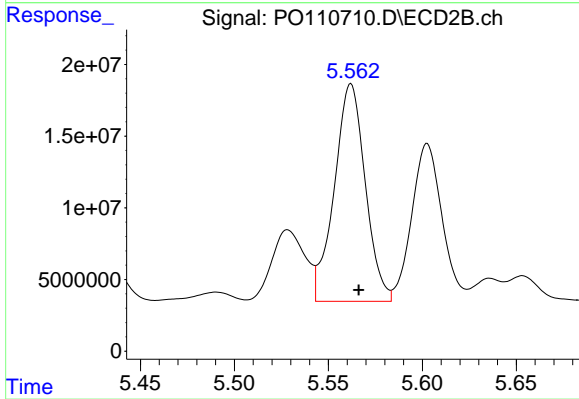
#25 AR-1248-5

R.T.: 5.603 min
 Delta R.T.: -0.003 min
 Response: 123324988
 Conc: 624.76 ng/ml



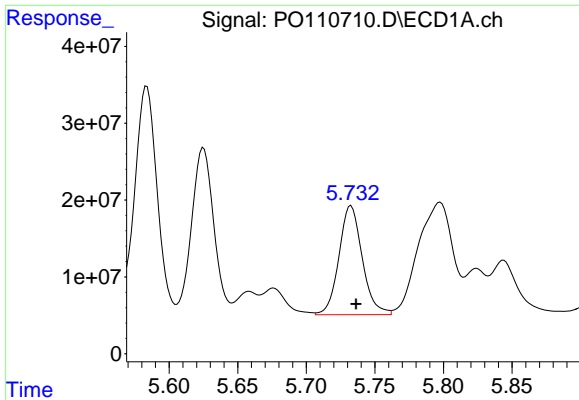
#26 AR-1254-1

R.T.: 5.584 min
 Delta R.T.: -0.003 min
 Response: 341654545
 Conc: 612.30 ng/ml



#26 AR-1254-1

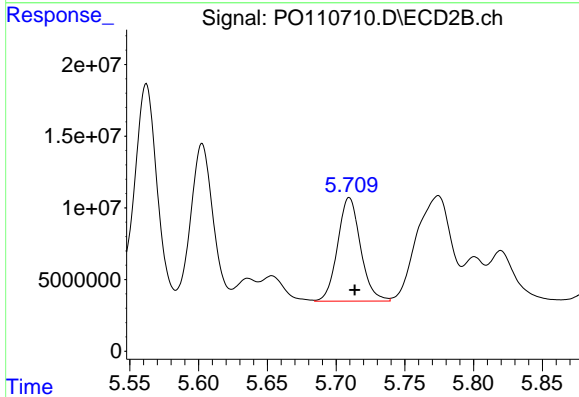
R.T.: 5.562 min
 Delta R.T.: -0.004 min
 Response: 174112677
 Conc: 577.49 ng/ml



#27 AR-1254-2

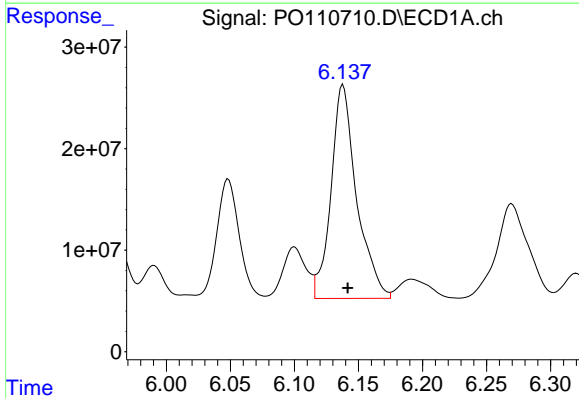
R.T.: 5.733 min
 Delta R.T.: -0.004 min
 Response: 167636707
 Conc: 345.14 ng/ml

Instrument :
 ECD_O
 ClientSampleId :



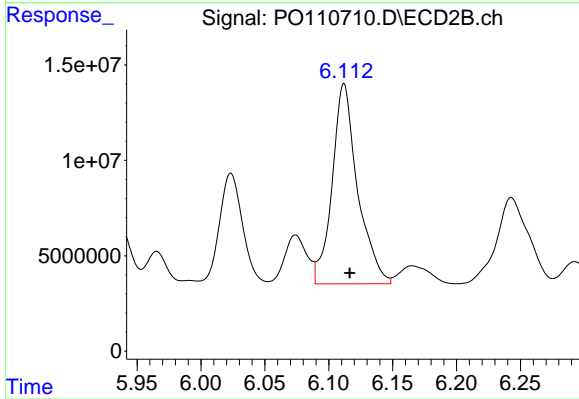
#27 AR-1254-2

R.T.: 5.710 min
 Delta R.T.: -0.004 min
 Response: 83922533
 Conc: 317.07 ng/ml



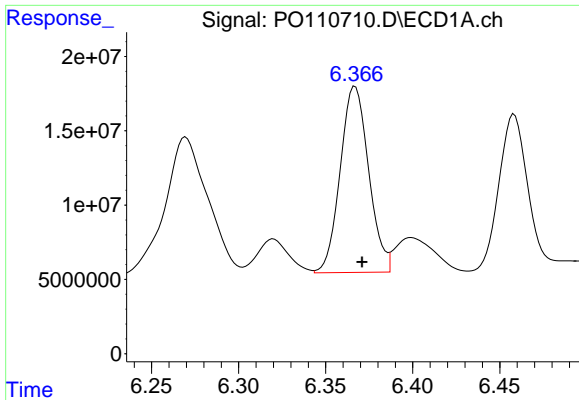
#28 AR-1254-3

R.T.: 6.138 min
 Delta R.T.: -0.004 min
 Response: 292670847
 Conc: 373.68 ng/ml



#28 AR-1254-3

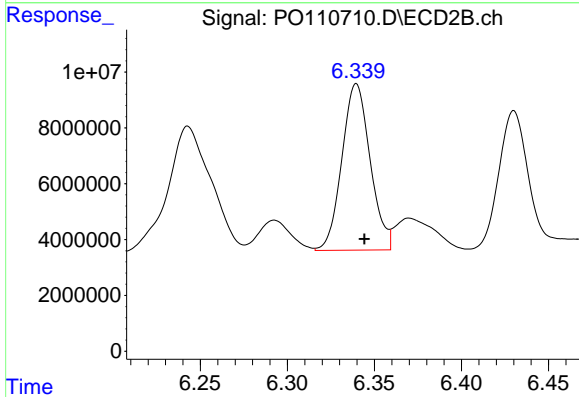
R.T.: 6.112 min
 Delta R.T.: -0.005 min
 Response: 145487694
 Conc: 360.64 ng/ml



#29 AR-1254-4

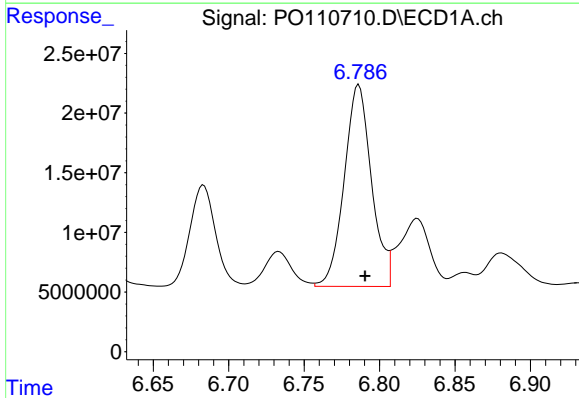
R.T.: 6.367 min
 Delta R.T.: -0.004 min
 Response: 142622567
 Conc: 292.50 ng/ml

Instrument :
 ECD_O
 ClientSampleId :



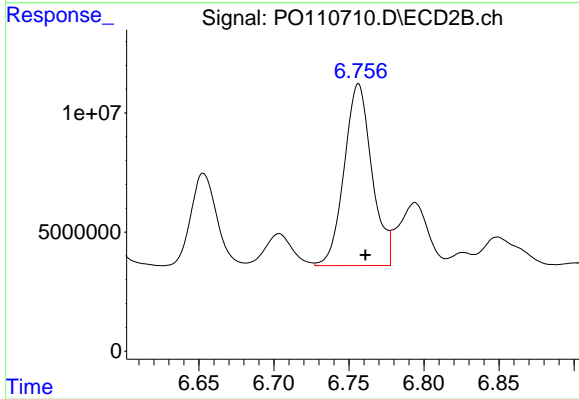
#29 AR-1254-4

R.T.: 6.340 min
 Delta R.T.: -0.005 min
 Response: 67372073
 Conc: 293.29 ng/ml



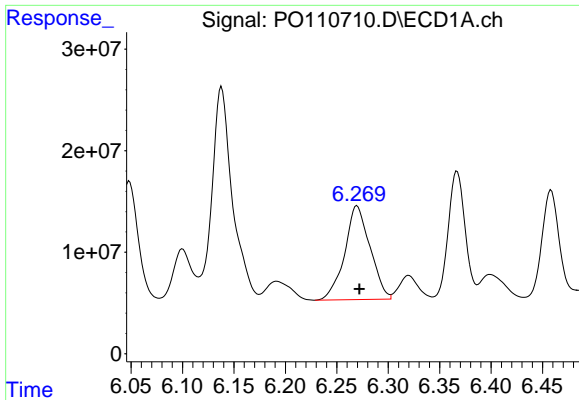
#30 AR-1254-5

R.T.: 6.786 min
 Delta R.T.: -0.004 min
 Response: 212836497
 Conc: 303.66 ng/ml



#30 AR-1254-5

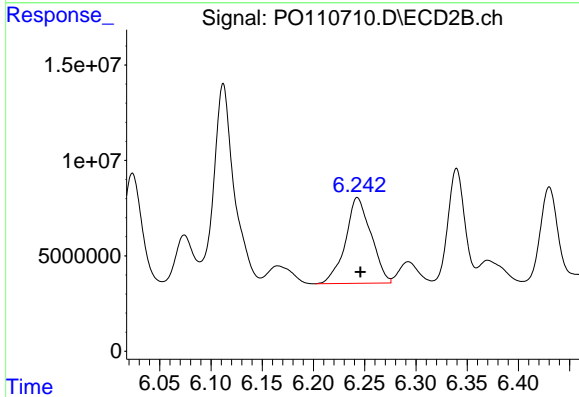
R.T.: 6.756 min
 Delta R.T.: -0.005 min
 Response: 98138047
 Conc: 295.34 ng/ml



#31 AR-1260-1

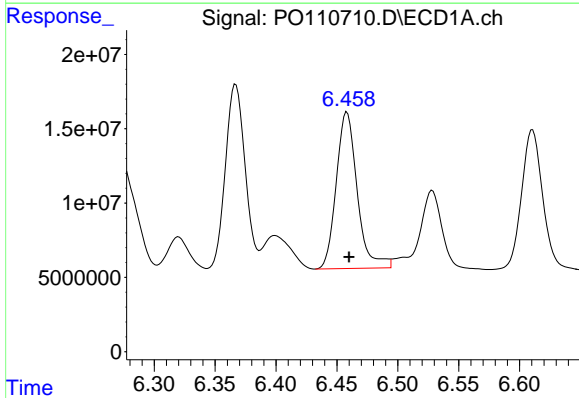
R.T.: 6.270 min
 Delta R.T.: -0.002 min
 Response: 158704643
 Conc: 335.92 ng/ml

Instrument :
 ECD_O
 ClientSampleId :



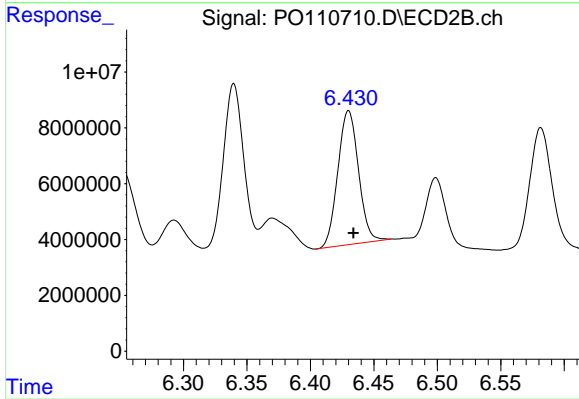
#31 AR-1260-1

R.T.: 6.243 min
 Delta R.T.: -0.003 min
 Response: 77957001
 Conc: 316.95 ng/ml



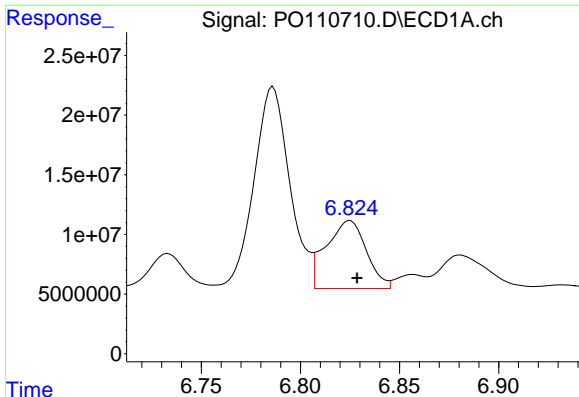
#32 AR-1260-2

R.T.: 6.458 min
 Delta R.T.: -0.002 min
 Response: 126038124
 Conc: 214.93 ng/ml



#32 AR-1260-2

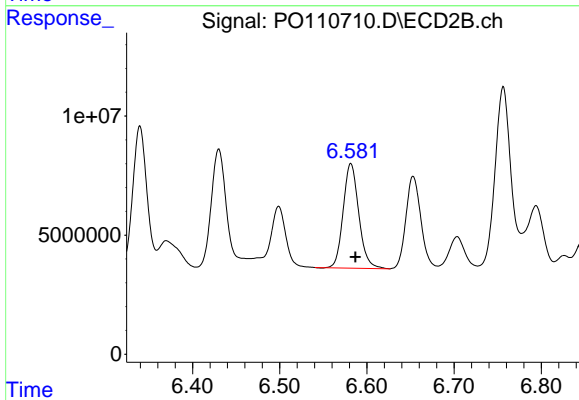
R.T.: 6.430 min
 Delta R.T.: -0.004 min
 Response: 54265467
 Conc: 186.00 ng/ml



#33 AR-1260-3

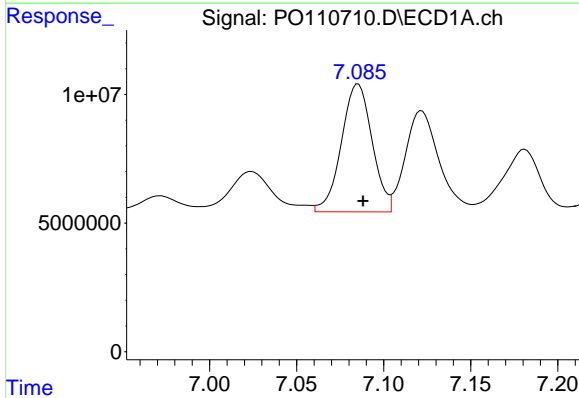
R.T.: 6.825 min
 Delta R.T.: -0.003 min
 Response: 80555606
 Conc: 163.44 ng/ml

Instrument :
 ECD_O
 ClientSampleId :



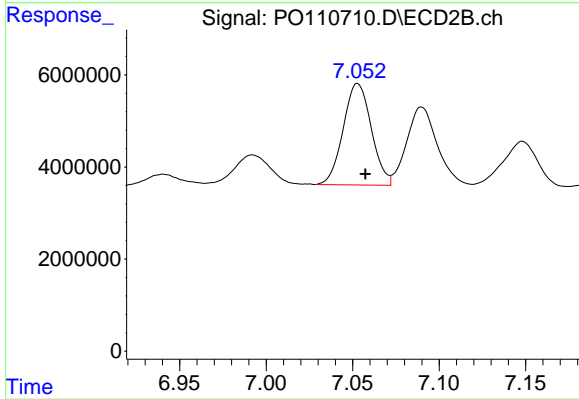
#33 AR-1260-3

R.T.: 6.582 min
 Delta R.T.: -0.005 min
 Response: 54529384
 Conc: 201.30 ng/ml



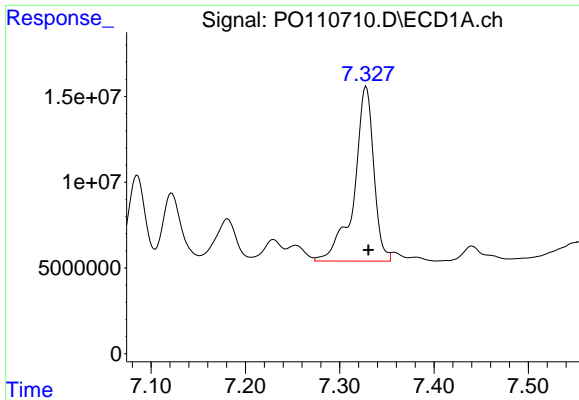
#34 AR-1260-4

R.T.: 7.085 min
 Delta R.T.: -0.003 min
 Response: 61175492
 Conc: 144.14 ng/ml



#34 AR-1260-4

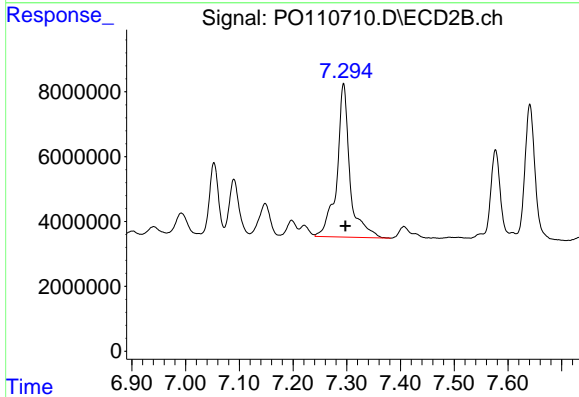
R.T.: 7.053 min
 Delta R.T.: -0.005 min
 Response: 24901070
 Conc: 124.11 ng/ml



#35 AR-1260-5

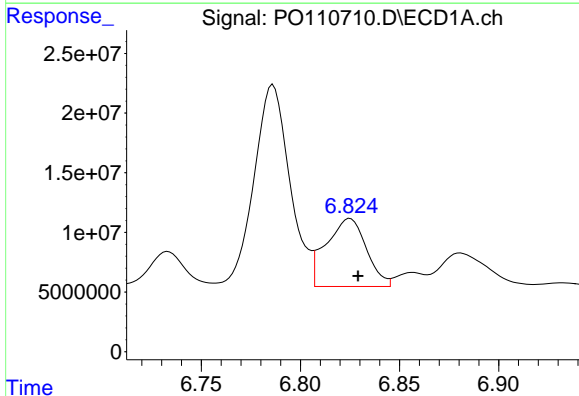
R.T.: 7.328 min
Delta R.T.: -0.002 min
Response: 147215645
Conc: 141.08 ng/ml

Instrument :
ECD_O
ClientSampleId :



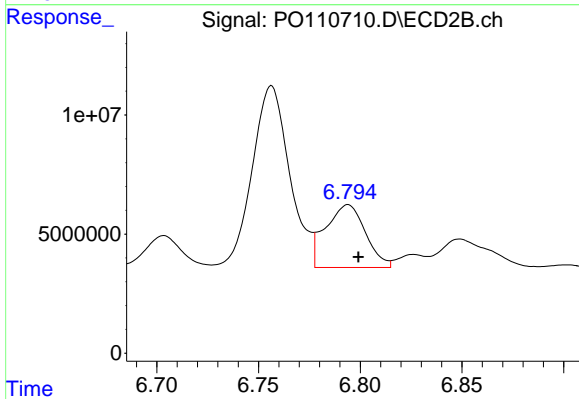
#35 AR-1260-5

R.T.: 7.294 min
Delta R.T.: -0.003 min
Response: 79861474
Conc: 174.04 ng/ml



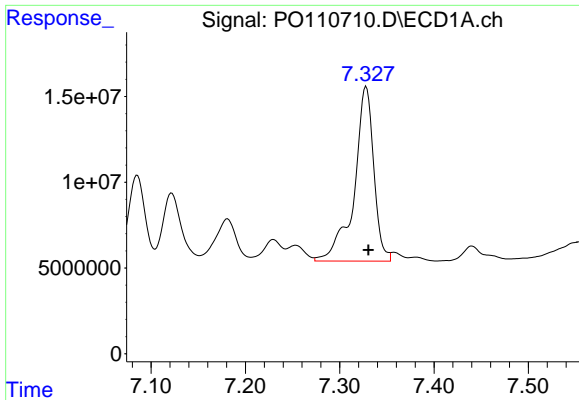
#36 AR-1262-1

R.T.: 6.825 min
Delta R.T.: -0.004 min
Response: 80555606
Conc: 114.84 ng/ml



#36 AR-1262-1

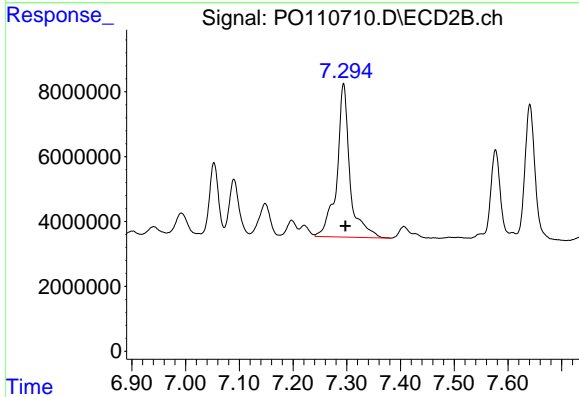
R.T.: 6.794 min
Delta R.T.: -0.005 min
Response: 36043440
Conc: 109.44 ng/ml



#37 AR-1262-2

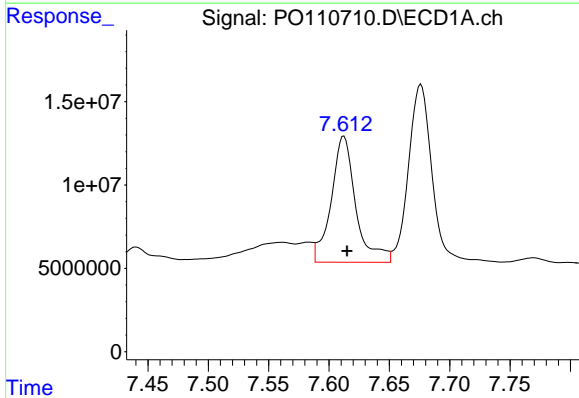
R.T.: 7.328 min
 Delta R.T.: -0.002 min
 Response: 147215645
 Conc: 121.89 ng/ml

Instrument :
 ECD_O
 ClientSampleId :



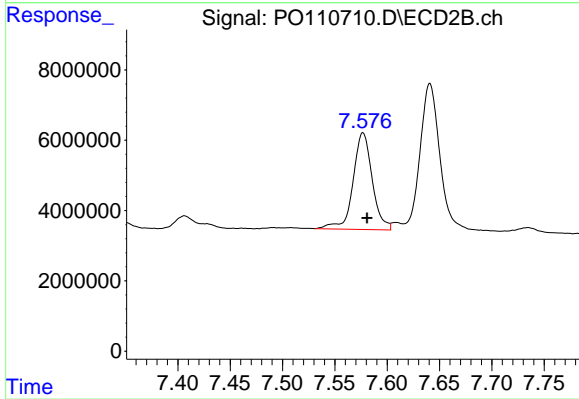
#37 AR-1262-2

R.T.: 7.294 min
 Delta R.T.: -0.004 min
 Response: 79861474
 Conc: 157.07 ng/ml



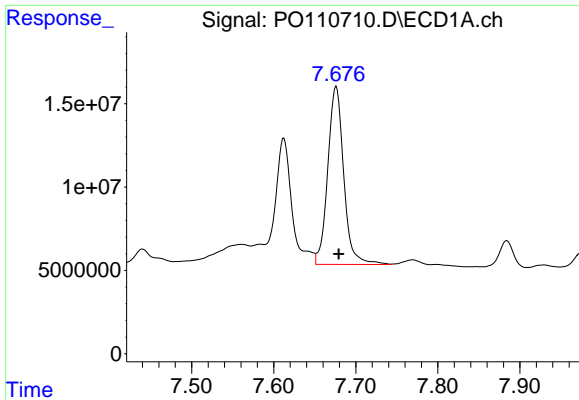
#38 AR-1262-3

R.T.: 7.612 min
 Delta R.T.: -0.003 min
 Response: 107219506
 Conc: 210.60 ng/ml



#38 AR-1262-3

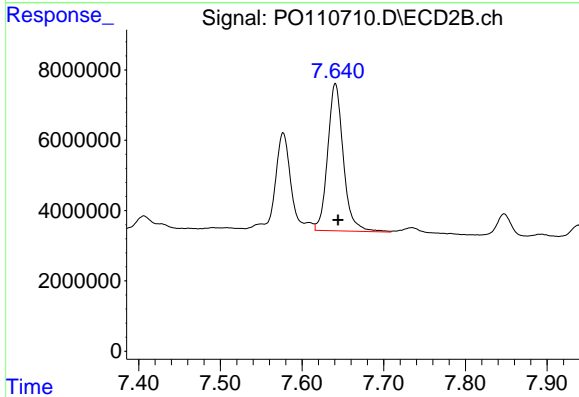
R.T.: 7.577 min
 Delta R.T.: -0.004 min
 Response: 35107270
 Conc: 181.31 ng/ml



#39 AR-1262-4

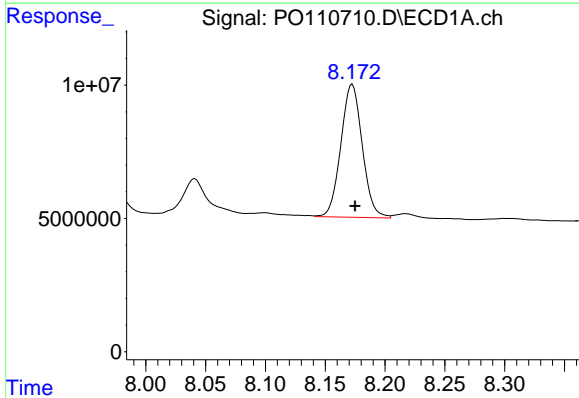
R.T.: 7.676 min
 Delta R.T.: -0.003 min
 Response: 144708907
 Conc: 161.46 ng/ml

Instrument :
 ECD_O
 ClientSampleId :



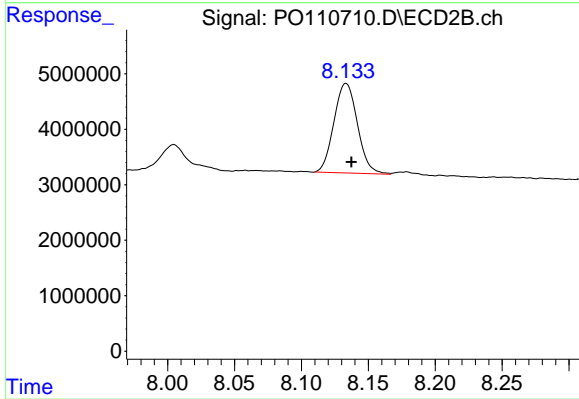
#39 AR-1262-4

R.T.: 7.641 min
 Delta R.T.: -0.003 min
 Response: 55785956
 Conc: 160.74 ng/ml



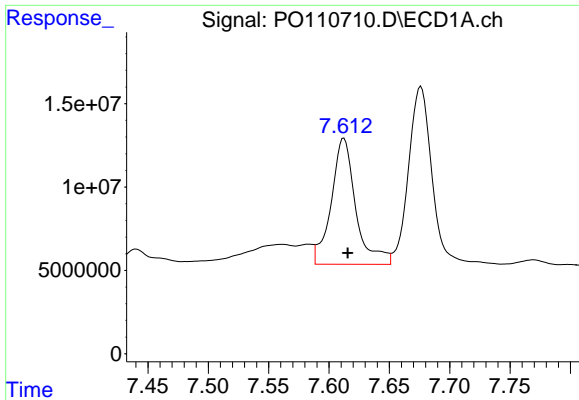
#40 AR-1262-5

R.T.: 8.173 min
 Delta R.T.: -0.002 min
 Response: 62181247
 Conc: 154.30 ng/ml



#40 AR-1262-5

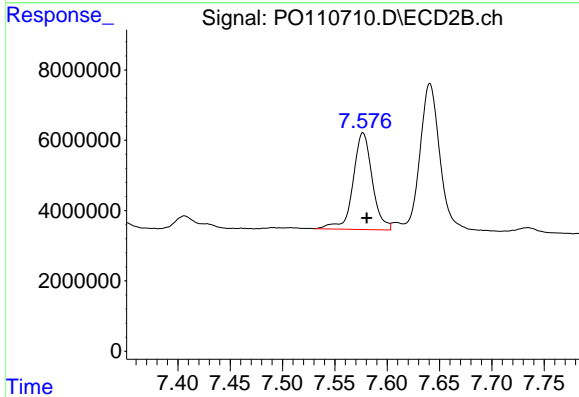
R.T.: 8.133 min
 Delta R.T.: -0.004 min
 Response: 19766898
 Conc: 158.65 ng/ml



#41 AR-1268-1

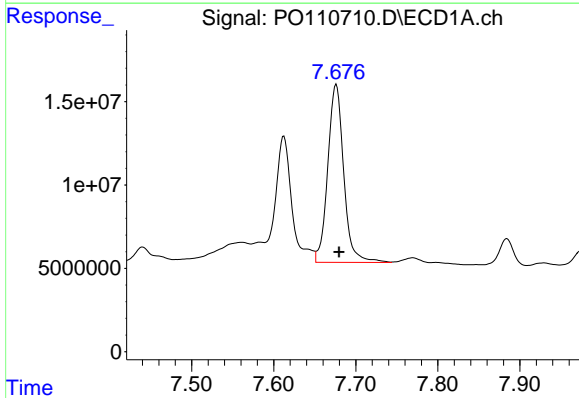
R.T.: 7.612 min
 Delta R.T.: -0.003 min
 Response: 107219506
 Conc: 76.36 ng/ml

Instrument :
 ECD_O
 ClientSampleId :



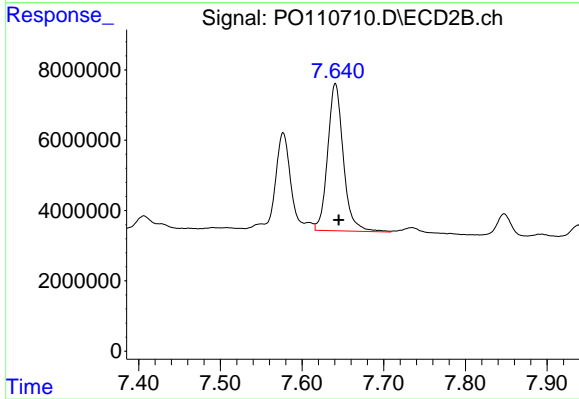
#41 AR-1268-1

R.T.: 7.577 min
 Delta R.T.: -0.004 min
 Response: 35107270
 Conc: 64.09 ng/ml



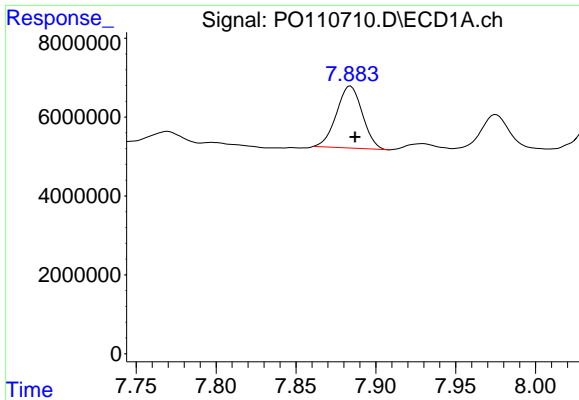
#42 AR-1268-2

R.T.: 7.676 min
 Delta R.T.: -0.004 min
 Response: 144708907
 Conc: 113.08 ng/ml



#42 AR-1268-2

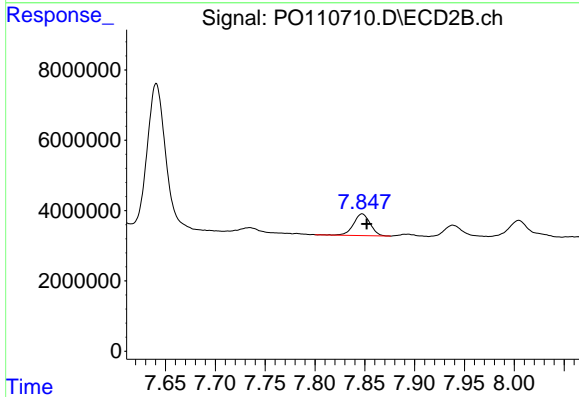
R.T.: 7.641 min
 Delta R.T.: -0.004 min
 Response: 55785956
 Conc: 112.13 ng/ml



#43 AR-1268-3

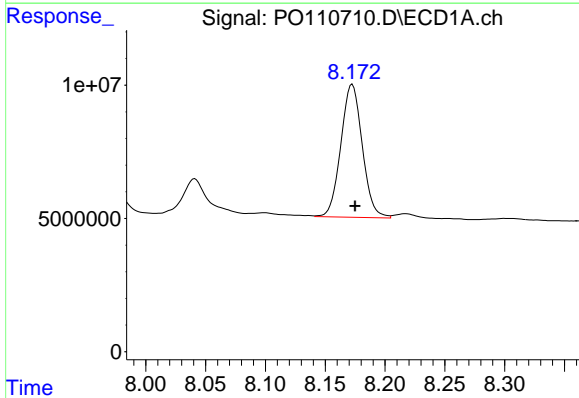
R.T.: 7.884 min
Delta R.T.: -0.003 min
Response: 17696747
Conc: 16.97 ng/ml

Instrument :
ECD_O
ClientSampleId :



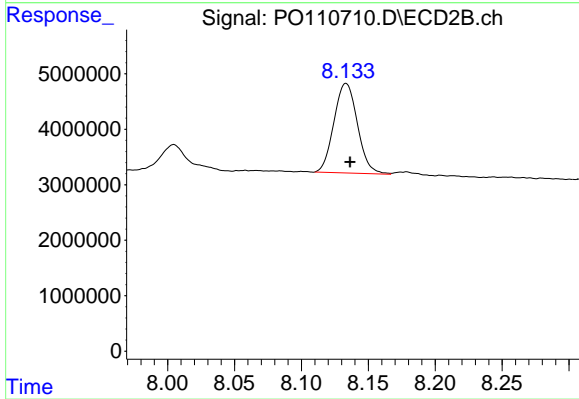
#43 AR-1268-3

R.T.: 7.847 min
Delta R.T.: -0.005 min
Response: 7152546
Conc: 19.25 ng/ml



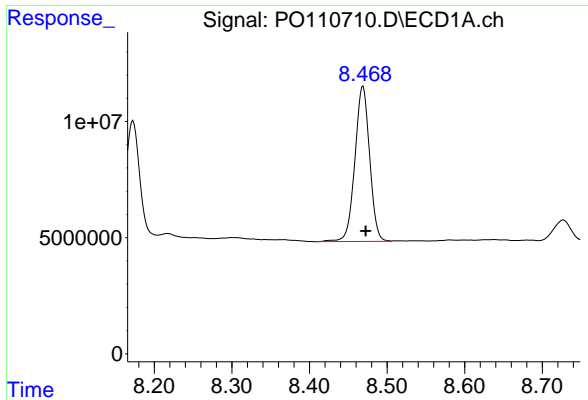
#44 AR-1268-4

R.T.: 8.173 min
Delta R.T.: -0.002 min
Response: 62181247
Conc: 140.00 ng/ml



#44 AR-1268-4

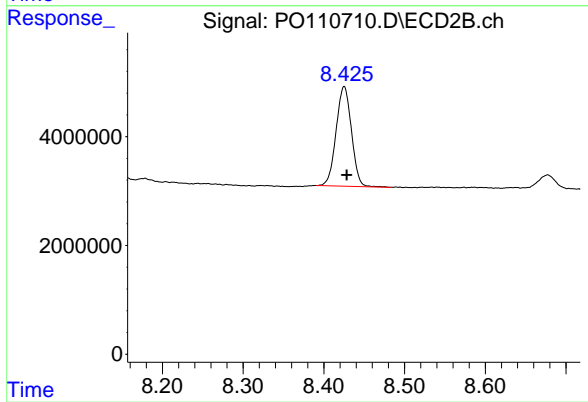
R.T.: 8.133 min
Delta R.T.: -0.003 min
Response: 19766898
Conc: 140.05 ng/ml



#45 AR-1268-5

R.T.: 8.469 min
Delta R.T.: -0.004 min
Response: 88218041
Conc: 27.40 ng/ml

Instrument :
ECD_O
ClientSampleId :



#45 AR-1268-5

R.T.: 8.425 min
Delta R.T.: -0.003 min
Response: 24178140
Conc: 30.71 ng/ml