

Data Path : Z:\pestpcbsrv\HPCHEM1\ECD\_0\Data\P0042525\  
 Data File : PO110719.D  
 Signal(s) : Signal #1: ECD1A.ch Signal #2: ECD2B.ch  
 Acq On : 25 Apr 2025 09:05  
 Operator : YP/AJ  
 Sample : HEXANE  
 Misc :  
 ALS Vial : 1 Sample Multiplier: 1

Instrument :  
 ECD\_0  
 ClientSampleId :  
 HEXANE

Integration File signal 1: autoint1.e  
 Integration File signal 2: autoint2.e  
 Quant Time: Apr 26 00:19:25 2025  
 Quant Method : Z:\pestpcbsrv\HPCHEM1\ECD\_0\methods\P0041025.M  
 Quant Title : GC EXTRACTABLES  
 QLast Update : Fri Apr 11 02:12:41 2025  
 Response via : Initial Calibration  
 Integrator: ChemStation

Volume Inj. : 2 µl  
 Signal #1 Phase : ZB-MR2 Signal #2 Phase: ZB-MR2  
 Signal #1 Info : 30Mx0.32mmx 0.50µ Signal #2 Info : 30M x 0.32mm x 0.25µm

Compound	RT#1	RT#2	Resp#1	Resp#2	ng/ml	ng/ml
System Monitoring Compounds						
1) SA Tetrachlo...	3.716f	3.719f	65531	121234	0.007	0.024 #
2) SA Decachlor...	8.735	8.685	304226	53315	0.039	0.028 #
Target Compounds						
3) L1 AR-1016-1	4.776	4.760	2039055	215803	6.214	1.230 #
4) L1 AR-1016-2	4.797	4.776	1812121	304937	3.983	1.213 #
5) L1 AR-1016-3	4.846	4.960	1856235	1421606	5.755	10.475 #
6) L1 AR-1016-4	4.974	5.036	8104929	2722868	32.528	23.808 #
7) L1 AR-1016-5	5.233	5.208	10151166	3629398	37.735	24.346 #
8) L2 AR-1221-1	3.906	3.892	168152	110103	1.425	1.649
9) L2 AR-1221-2	3.997	3.984	445481	179157	5.043	3.576 #
10) L2 AR-1221-3	4.062	4.058	264729	99720	1.006	0.668 #
11) L3 AR-1232-1	4.062	4.058	264729	99720	1.292	0.867 #
12) L3 AR-1232-2	4.545	4.776	251201	304937	2.354	2.750
13) L3 AR-1232-3	4.797	4.960	1812121	1421606	9.071	24.852 #
14) L3 AR-1232-4	4.974	5.036	8104929	2722868	79.228	50.467 #
15) L3 AR-1232-5	5.058f	5.208	5457865	3629398	79.212	63.522
16) L4 AR-1242-1	4.776	4.760	2039055	215803	7.347	1.443 #
17) L4 AR-1242-2	4.797	4.776	1812121	304937	4.697	1.429 #
18) L4 AR-1242-3	4.846	4.960	1856235	1421606	6.672	12.300 #
19) L4 AR-1242-4	4.974	5.036	8104929	2722868	38.345	22.672 #
20) L4 AR-1242-5	5.619	5.588	14583948	5566848	64.419	38.366 #
21) L5 AR-1248-1	4.776	4.760	2039055	215803	9.580	1.874 #
22) L5 AR-1248-2	5.058f	5.036	5457865	2722868	18.443	16.717
23) L5 AR-1248-3	5.233	5.036	10151166	2722868	27.438	15.484 #
24) L5 AR-1248-4	5.582	5.208	8604327	3629398	16.546	17.819
25) L5 AR-1248-5	5.619	5.599	14583948	3701395	39.477	18.751 #
26) L6 AR-1254-1	5.582	5.588	8604327	5566848	15.420	18.464
27) L6 AR-1254-2	5.732	5.703	4244160	5702365	8.738	21.544 #
28) L6 AR-1254-3	6.138	6.115	9345352	4530721	11.932	11.231
29) L6 AR-1254-4	6.369	6.350	1498101	950060	3.072	4.136 #
30) L6 AR-1254-5	6.791	6.752	809747	236605	1.155	0.712 #
31) L7 AR-1260-1	6.274	6.240	2595612	1263617	5.494	5.137
32) L7 AR-1260-2	6.456	6.406	646519	2640062	1.102	9.049 #
33) L7 AR-1260-3	6.819	6.560	1541216	1503547	3.127	5.551 #
34) L7 AR-1260-4	7.090	7.053	163905	60975	0.386	0.304
35) L7 AR-1260-5	7.328	7.299	335304	152447	0.321	0.332
36) L8 AR-1262-1	6.819	6.788	1541216	430189	2.197	1.306 #
37) L8 AR-1262-2	7.328	7.299	335304	152447	0.278	0.300
38) L8 AR-1262-3	7.617	7.569	127015	316865	0.249	1.636 #
39) L8 AR-1262-4	7.672	7.638	466916	320156	0.521	0.922 #
40) L8 AR-1262-5	8.164	8.127	132749	75709	0.329	0.608 #
41) L9 AR-1268-1	7.617	7.569	127015	316865	0.090	0.578 #

Data Path : Z:\pestpcbsrv\HPCHEM1\ECD\_0\Data\P0042525\  
 Data File : P0110719.D  
 Signal(s) : Signal #1: ECD1A.ch Signal #2: ECD2B.ch  
 Acq On : 25 Apr 2025 09:05  
 Operator : YP/AJ  
 Sample : HEXANE  
 Misc :  
 ALS Vial : 1 Sample Multiplier: 1

Instrument :  
 ECD\_0  
 ClientSampleId :  
 HEXANE

Integration File signal 1: autoint1.e  
 Integration File signal 2: autoint2.e  
 Quant Time: Apr 26 00:19:25 2025  
 Quant Method : Z:\pestpcbsrv\HPCHEM1\ECD\_0\methods\P0041025.M  
 Quant Title : GC EXTRACTABLES  
 QLast Update : Fri Apr 11 02:12:41 2025  
 Response via : Initial Calibration  
 Integrator: ChemStation

Volume Inj. : 2 µl  
 Signal #1 Phase : ZB-MR1 Signal #2 Phase: ZB-MR2  
 Signal #1 Info : 30Mx0.32mmx 0.50µ Signal #2 Info : 30M x 0.32mm x 0.25µm

	Compound	RT#1	RT#2	Resp#1	Resp#2	ng/ml	ng/ml
42)	L9 AR-1268-2	7.672	7.638	466916	320156	0.365	0.644 #
43)	L9 AR-1268-3	7.875	7.845	106889	54860	0.102	0.148 #
44)	L9 AR-1268-4	8.164	8.127	132749	75709	0.299	0.536 #
45)	L9 AR-1268-5	8.464	8.413	345693	38184	0.107	0.049 #

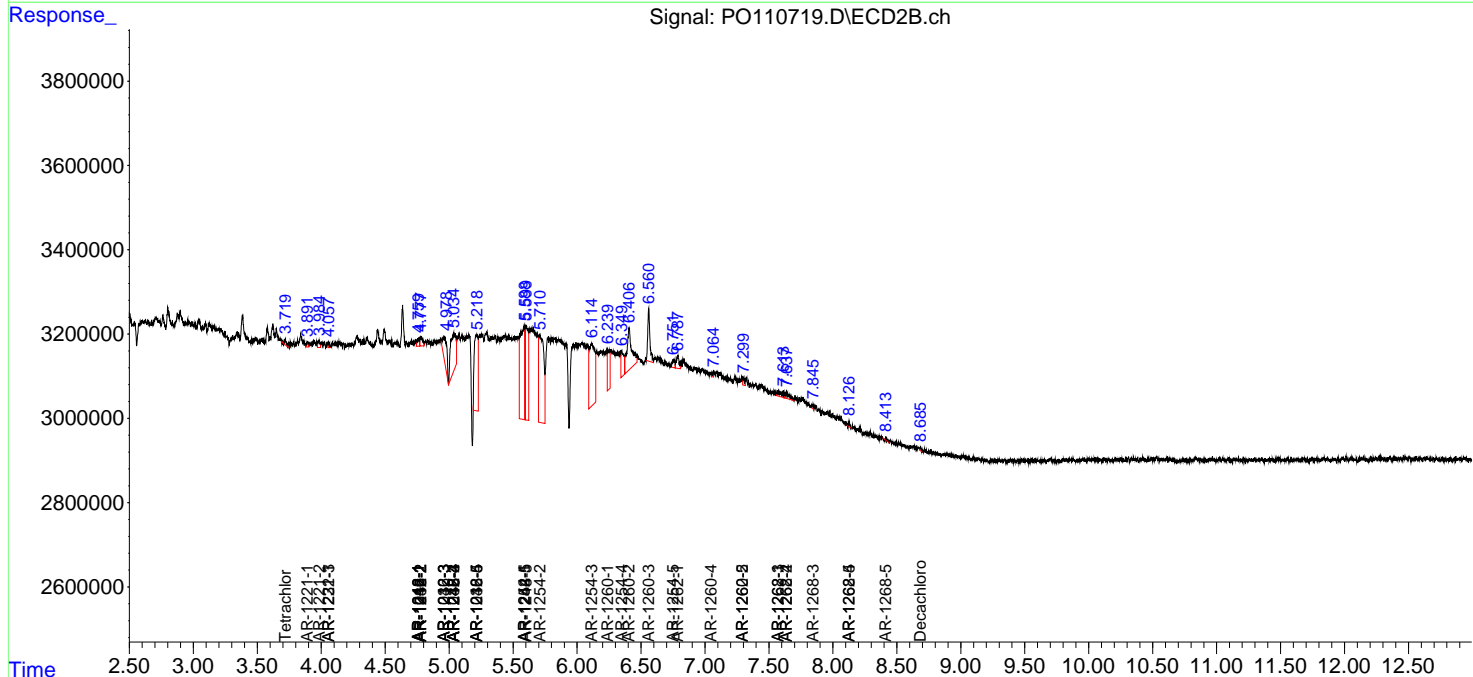
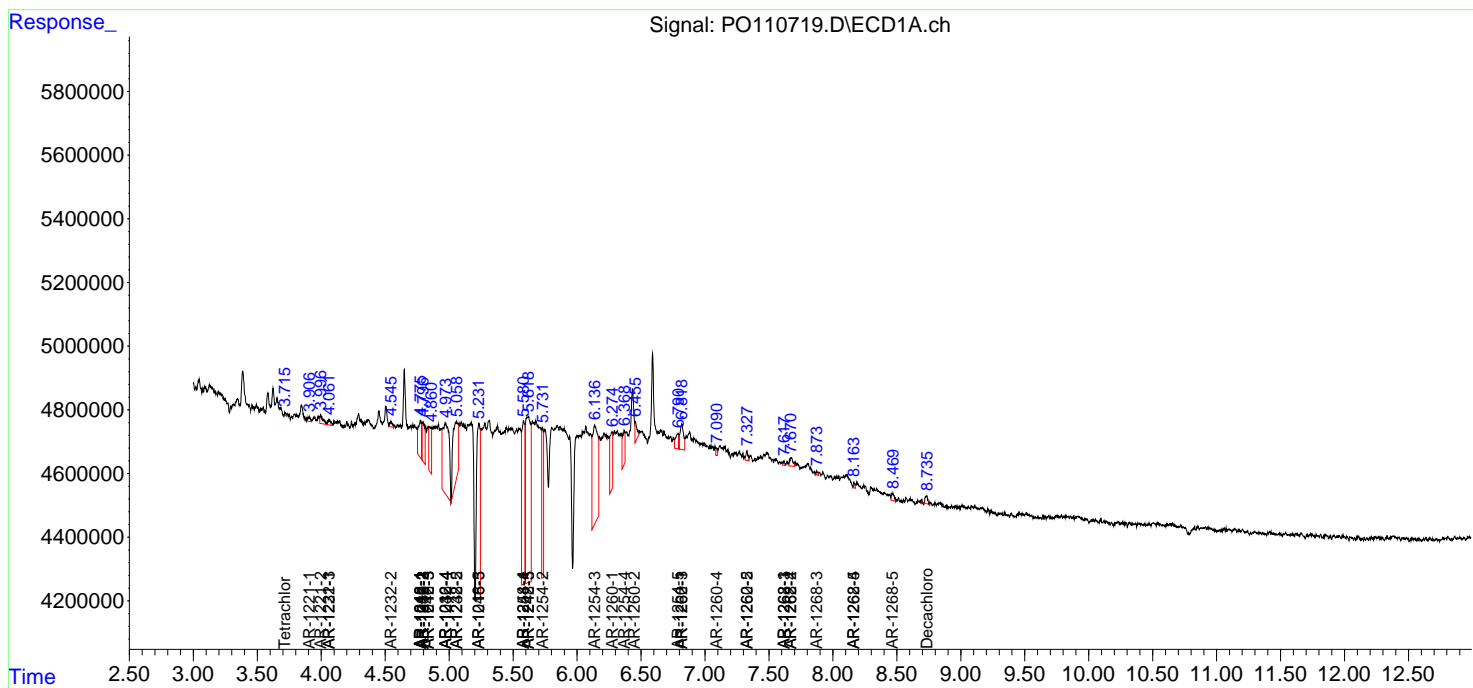
(f)=RT Delta > 1/2 Window (#)=Amounts differ by > 25% (m)=manual int.

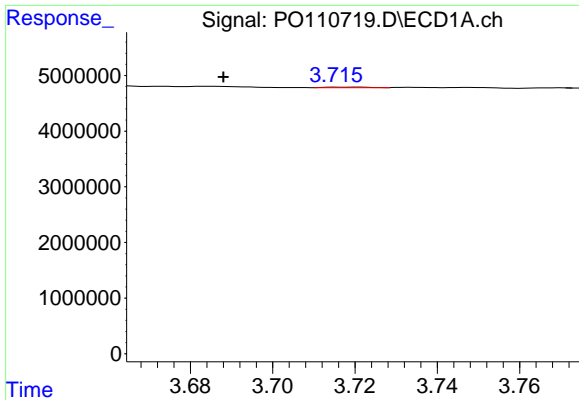
Data Path : Z:\pestpcbsrv\HPCHEM1\ECD\_O\Data\PO042525\  
 Data File : PO110719.D  
 Signal(s) : Signal #1: ECD1A.ch Signal #2: ECD2B.ch  
 Acq On : 25 Apr 2025 09:05  
 Operator : YP/AJ  
 Sample : HEXANE  
 Misc :  
 ALS Vial : 1 Sample Multiplier: 1

Instrument :  
 ECD\_O  
 ClientSampleId :  
 HEXANE

Integration File signal 1: autoint1.e  
 Integration File signal 2: autoint2.e  
 Quant Time: Apr 26 00:19:25 2025  
 Quant Method : Z:\pestpcbsrv\HPCHEM1\ECD\_O\methods\PO041025.M  
 Quant Title : GC EXTRACTABLES  
 QLast Update : Fri Apr 11 02:12:41 2025  
 Response via : Initial Calibration  
 Integrator: ChemStation

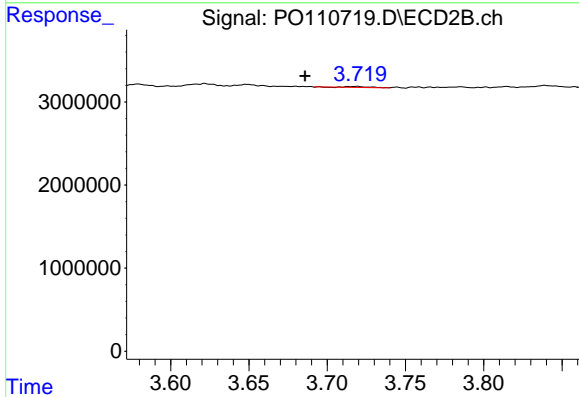
Volume Inj. : 2 µl  
 Signal #1 Phase : ZB-MR1 Signal #2 Phase: ZB-MR2  
 Signal #1 Info : 30Mx0.32mmx 0.50µ Signal #2 Info : 30M x 0.32mm x 0.25µm



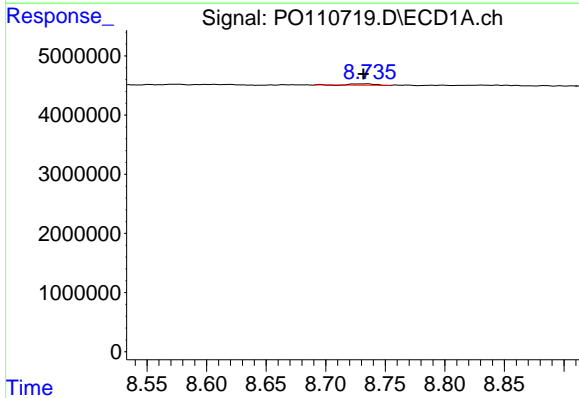


#1 Tetrachloro-m-xylene  
 R.T.: 3.716 min  
 Delta R.T.: 0.028 min  
 Response: 65531  
 Conc: 0.01 ng/ml

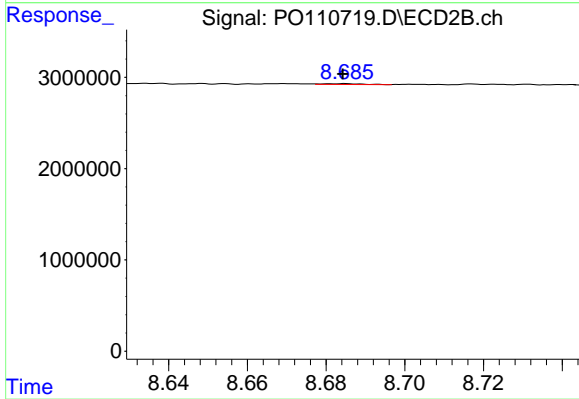
Instrument :  
 ECD\_O  
 ClientSampleId :  
 HEXANE



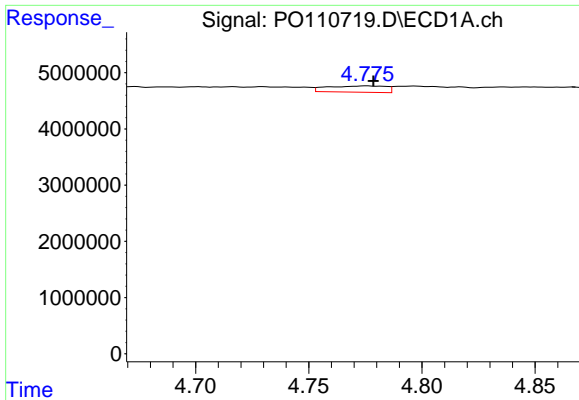
#1 Tetrachloro-m-xylene  
 R.T.: 3.719 min  
 Delta R.T.: 0.033 min  
 Response: 121234  
 Conc: 0.02 ng/ml



#2 Decachlorobiphenyl  
 R.T.: 8.735 min  
 Delta R.T.: 0.003 min  
 Response: 304226  
 Conc: 0.04 ng/ml



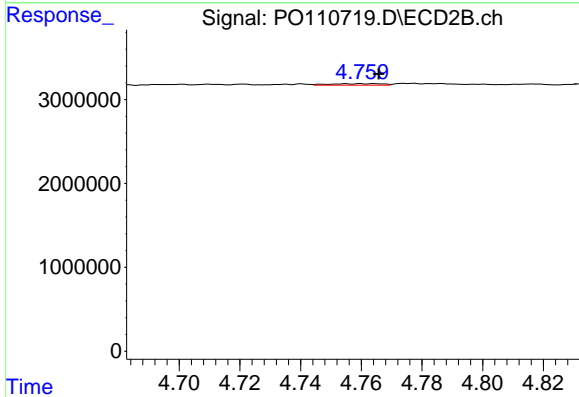
#2 Decachlorobiphenyl  
 R.T.: 8.685 min  
 Delta R.T.: 0.000 min  
 Response: 53315  
 Conc: 0.03 ng/ml



#3 AR-1016-1

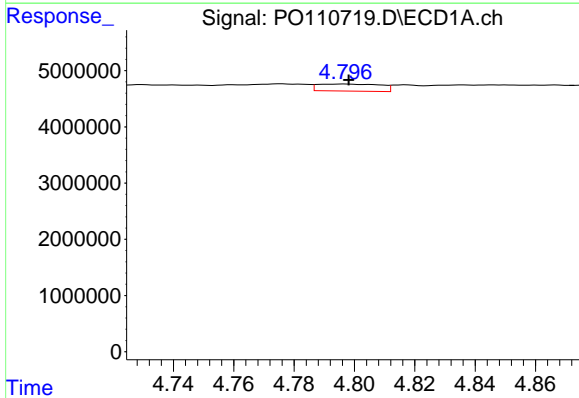
R.T.: 4.776 min  
 Delta R.T.: -0.003 min  
 Response: 2039055  
 Conc: 6.21 ng/ml

Instrument :  
 ECD\_O  
 ClientSampleId :  
 HEXANE



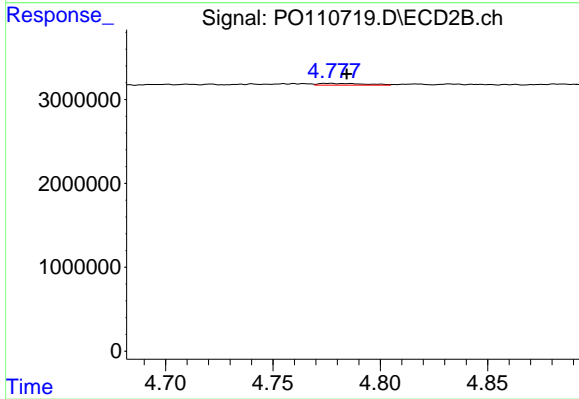
#3 AR-1016-1

R.T.: 4.760 min  
 Delta R.T.: -0.006 min  
 Response: 215803  
 Conc: 1.23 ng/ml



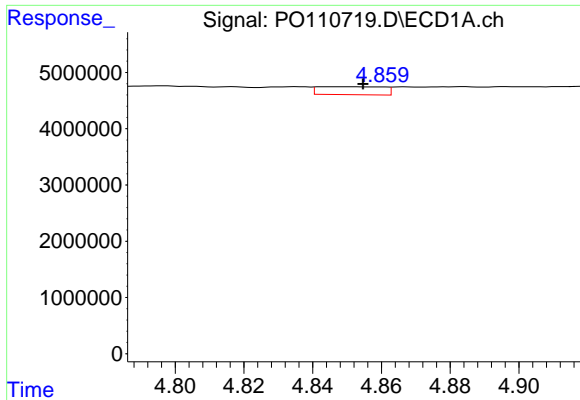
#4 AR-1016-2

R.T.: 4.797 min  
 Delta R.T.: -0.002 min  
 Response: 1812121  
 Conc: 3.98 ng/ml



#4 AR-1016-2

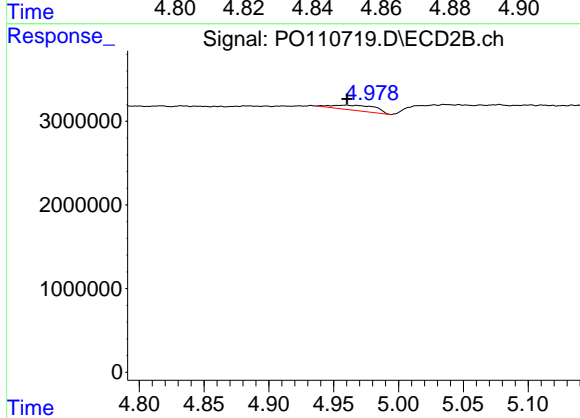
R.T.: 4.776 min  
 Delta R.T.: -0.009 min  
 Response: 304937  
 Conc: 1.21 ng/ml



#5 AR-1016-3

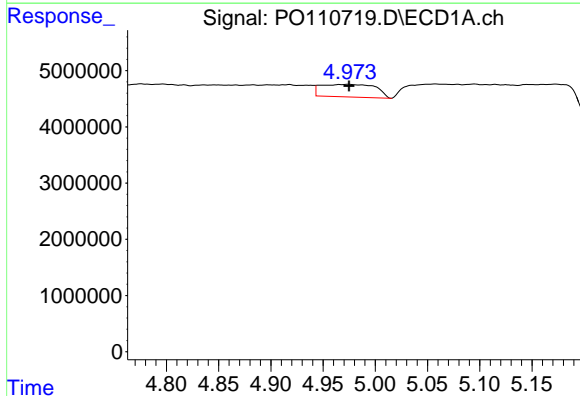
R.T.: 4.846 min  
 Delta R.T.: -0.009 min  
 Response: 1856235  
 Conc: 5.76 ng/ml

Instrument :  
 ECD\_O  
 ClientSampleId :  
 HEXANE



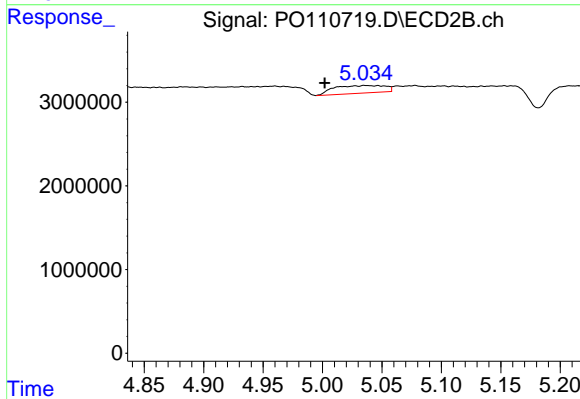
#5 AR-1016-3

R.T.: 4.960 min  
 Delta R.T.: 0.000 min  
 Response: 1421606  
 Conc: 10.48 ng/ml



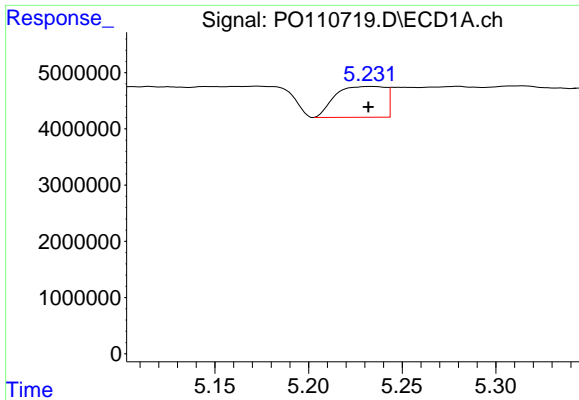
#6 AR-1016-4

R.T.: 4.974 min  
 Delta R.T.: -0.001 min  
 Response: 8104929  
 Conc: 32.53 ng/ml



#6 AR-1016-4

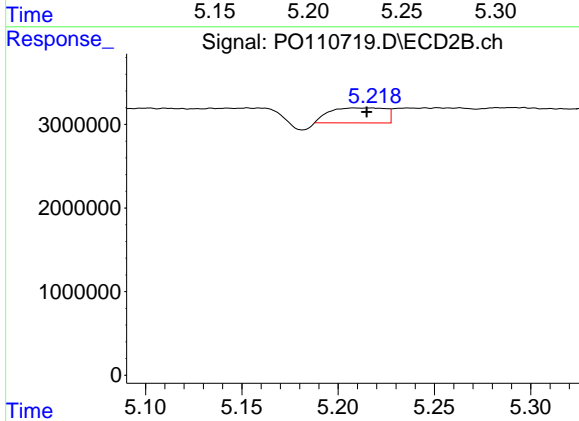
R.T.: 5.036 min  
 Delta R.T.: 0.034 min  
 Response: 2722868  
 Conc: 23.81 ng/ml



#7 AR-1016-5

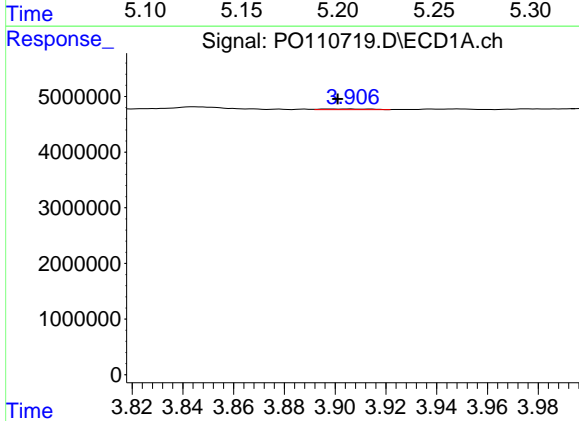
R.T.: 5.233 min  
 Delta R.T.: 0.001 min  
 Response: 10151166  
 Conc: 37.74 ng/ml

Instrument :  
 ECD\_O  
 ClientSampleId :  
 HEXANE



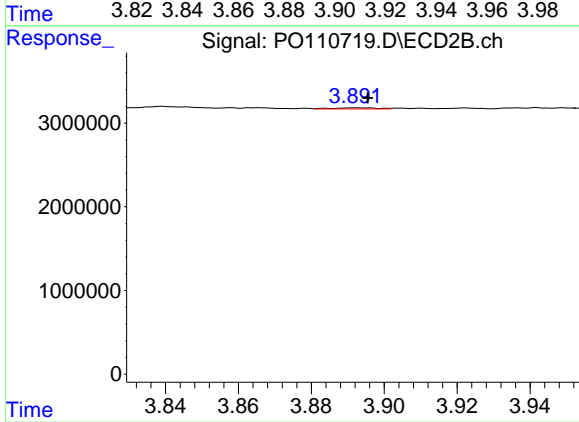
#7 AR-1016-5

R.T.: 5.208 min  
 Delta R.T.: -0.007 min  
 Response: 3629398  
 Conc: 24.35 ng/ml



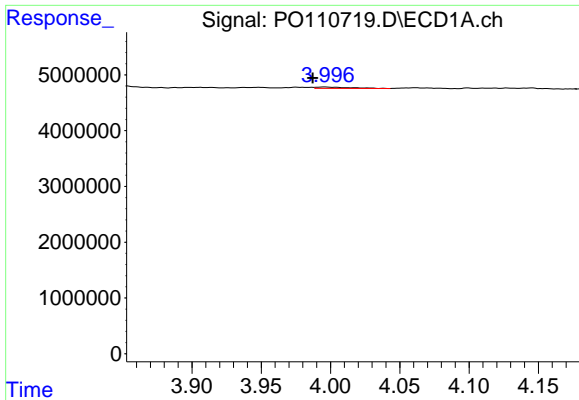
#8 AR-1221-1

R.T.: 3.906 min  
 Delta R.T.: 0.005 min  
 Response: 168152  
 Conc: 1.42 ng/ml



#8 AR-1221-1

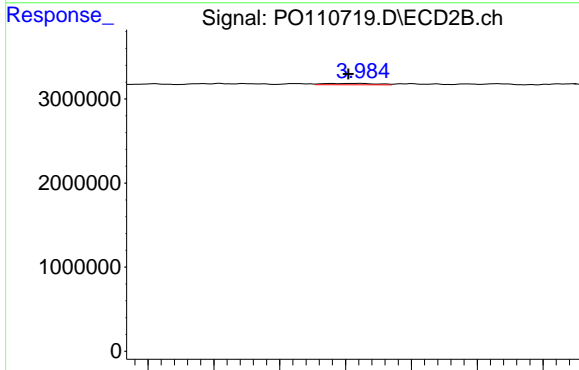
R.T.: 3.892 min  
 Delta R.T.: -0.003 min  
 Response: 110103  
 Conc: 1.65 ng/ml



#9 AR-1221-2

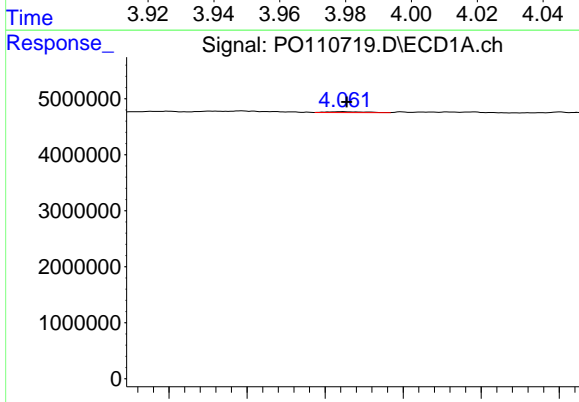
R.T.: 3.997 min  
 Delta R.T.: 0.009 min  
 Response: 445481  
 Conc: 5.04 ng/ml

Instrument :  
 ECD\_O  
 ClientSampleId :  
 HEXANE



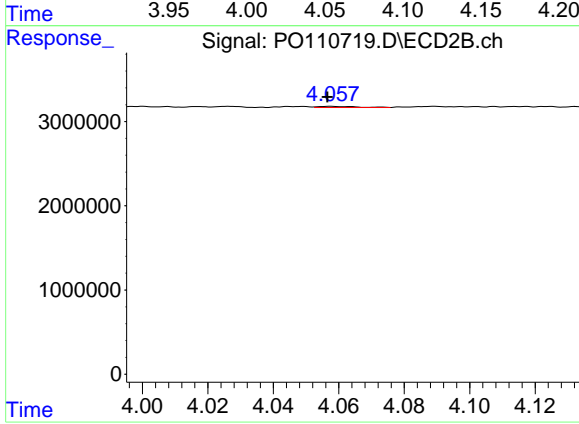
#9 AR-1221-2

R.T.: 3.984 min  
 Delta R.T.: 0.003 min  
 Response: 179157  
 Conc: 3.58 ng/ml



#10 AR-1221-3

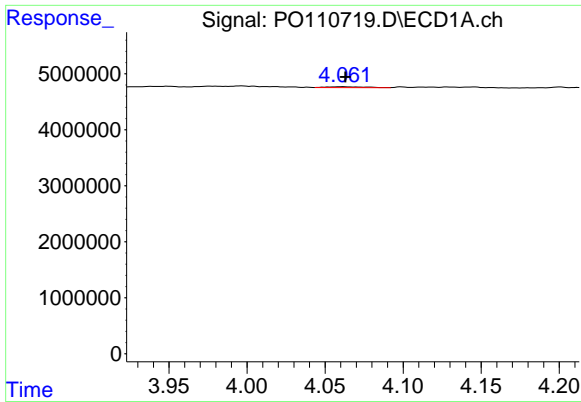
R.T.: 4.062 min  
 Delta R.T.: -0.002 min  
 Response: 264729  
 Conc: 1.01 ng/ml



#10 AR-1221-3

R.T.: 4.058 min  
 Delta R.T.: 0.001 min  
 Response: 99720  
 Conc: 0.67 ng/ml

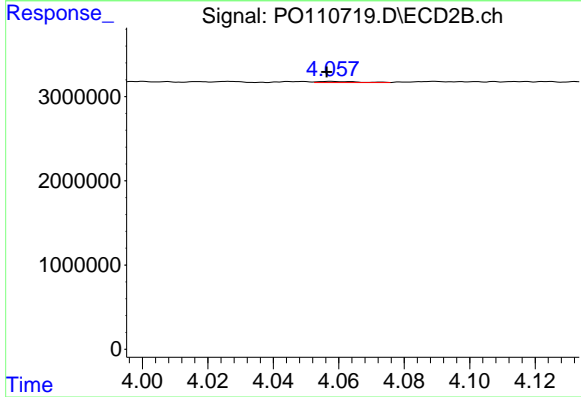




#11 AR-1232-1

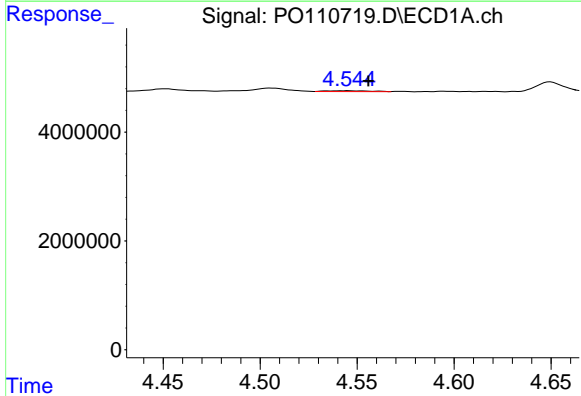
R.T.: 4.062 min  
 Delta R.T.: -0.001 min  
 Response: 264729  
 Conc: 1.29 ng/ml

Instrument :  
 ECD\_O  
 ClientSampleId :  
 HEXANE



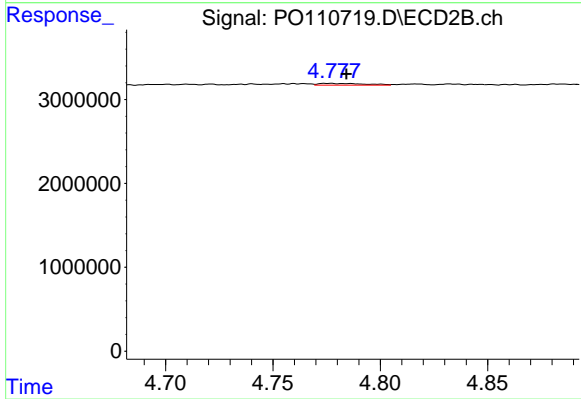
#11 AR-1232-1

R.T.: 4.058 min  
 Delta R.T.: 0.001 min  
 Response: 99720  
 Conc: 0.87 ng/ml



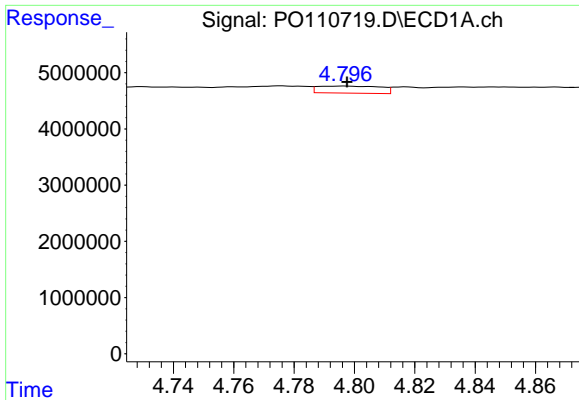
#12 AR-1232-2

R.T.: 4.545 min  
 Delta R.T.: -0.010 min  
 Response: 251201  
 Conc: 2.35 ng/ml



#12 AR-1232-2

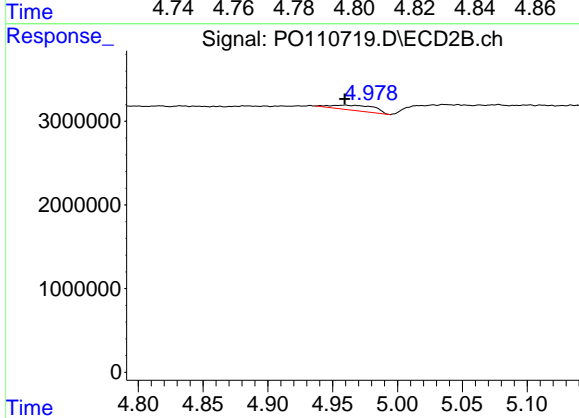
R.T.: 4.776 min  
 Delta R.T.: -0.008 min  
 Response: 304937  
 Conc: 2.75 ng/ml



#13 AR-1232-3

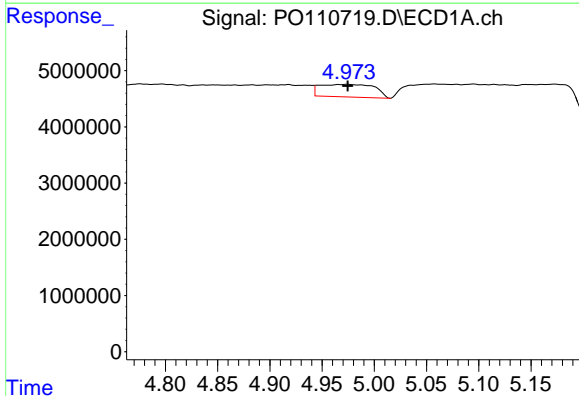
R.T.: 4.797 min  
 Delta R.T.: -0.001 min  
 Response: 1812121  
 Conc: 9.07 ng/ml

Instrument :  
 ECD\_O  
 ClientSampleId :  
 HEXANE



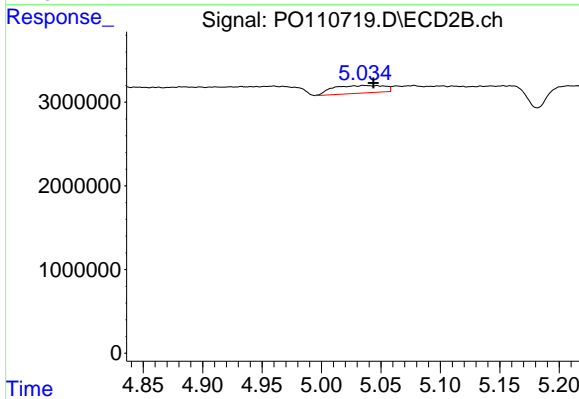
#13 AR-1232-3

R.T.: 4.960 min  
 Delta R.T.: 0.000 min  
 Response: 1421606  
 Conc: 24.85 ng/ml



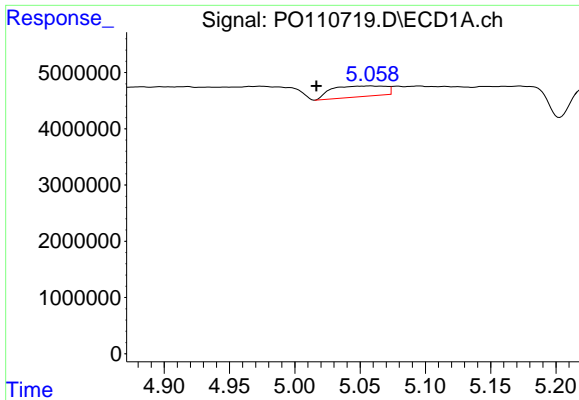
#14 AR-1232-4

R.T.: 4.974 min  
 Delta R.T.: 0.000 min  
 Response: 8104929  
 Conc: 79.23 ng/ml



#14 AR-1232-4

R.T.: 5.036 min  
 Delta R.T.: -0.008 min  
 Response: 2722868  
 Conc: 50.47 ng/ml

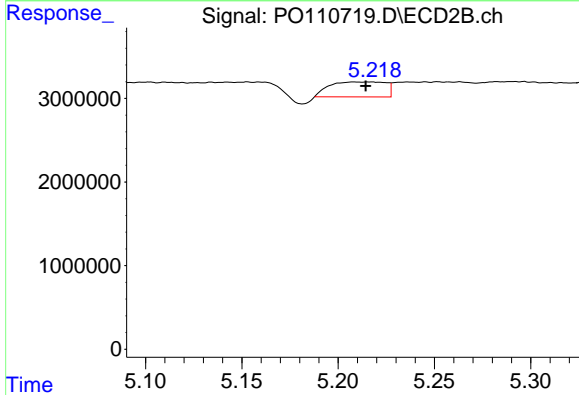


#15 AR-1232-5

R.T.: 5.058 min  
 Delta R.T.: 0.041 min  
 Response: 5457865  
 Conc: 79.21 ng/ml

Instrument :  
 ECD\_O  
 ClientSampleId :  
 HEXANE

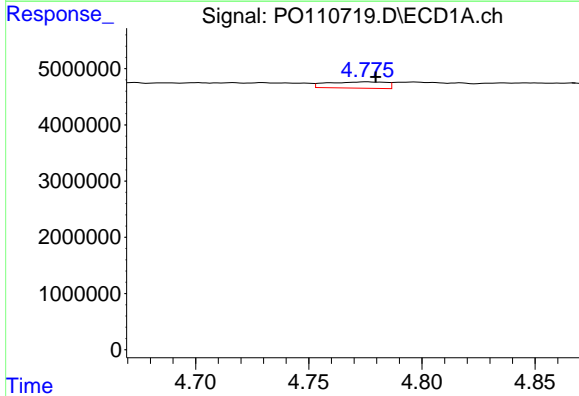
Time 4.90 4.95 5.00 5.05 5.10 5.15 5.20



#15 AR-1232-5

R.T.: 5.208 min  
 Delta R.T.: -0.006 min  
 Response: 3629398  
 Conc: 63.52 ng/ml

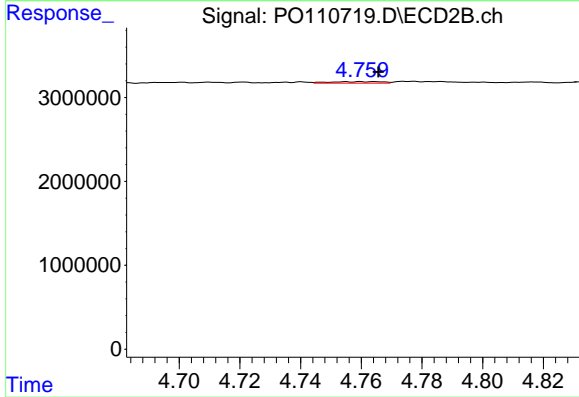
Time 5.10 5.15 5.20 5.25 5.30



#16 AR-1242-1

R.T.: 4.776 min  
 Delta R.T.: -0.004 min  
 Response: 2039055  
 Conc: 7.35 ng/ml

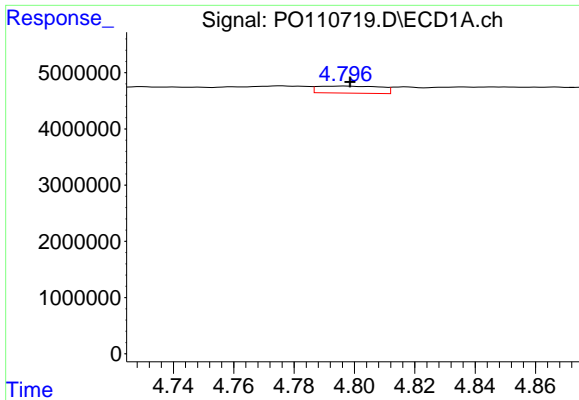
Time 4.70 4.75 4.80 4.85



#16 AR-1242-1

R.T.: 4.760 min  
 Delta R.T.: -0.006 min  
 Response: 215803  
 Conc: 1.44 ng/ml

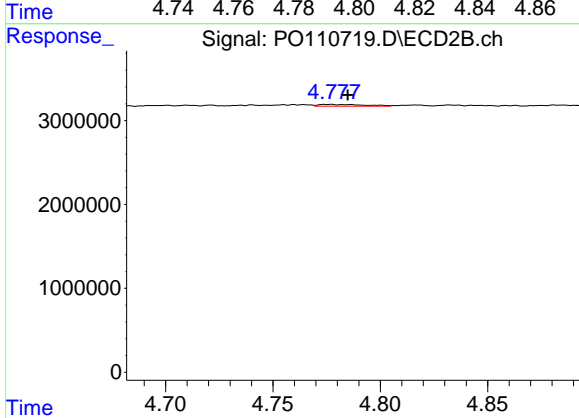
Time 4.70 4.72 4.74 4.76 4.78 4.80 4.82



#17 AR-1242-2

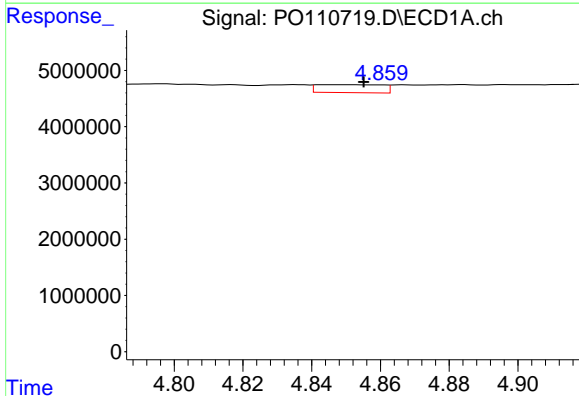
R.T.: 4.797 min  
 Delta R.T.: -0.002 min  
 Response: 1812121  
 Conc: 4.70 ng/ml

Instrument :  
 ECD\_O  
 ClientSampleId :  
 HEXANE



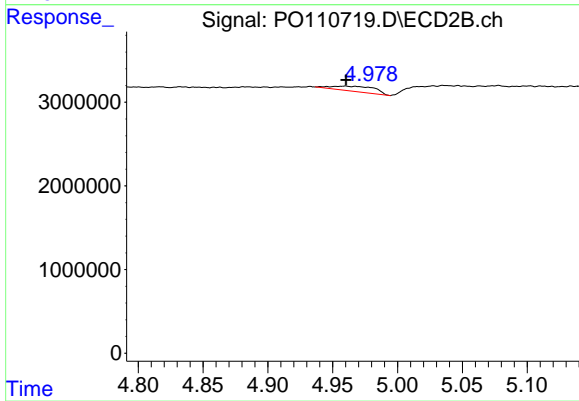
#17 AR-1242-2

R.T.: 4.776 min  
 Delta R.T.: -0.009 min  
 Response: 304937  
 Conc: 1.43 ng/ml



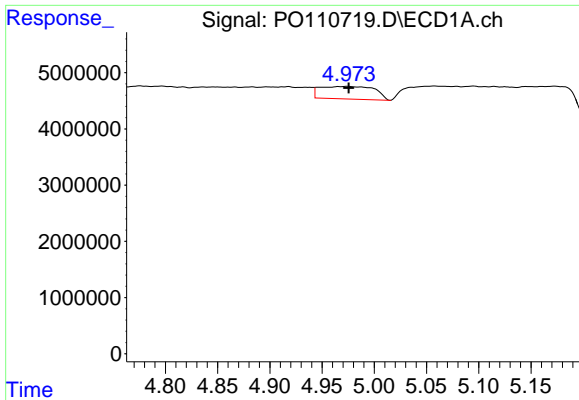
#18 AR-1242-3

R.T.: 4.846 min  
 Delta R.T.: -0.009 min  
 Response: 1856235  
 Conc: 6.67 ng/ml



#18 AR-1242-3

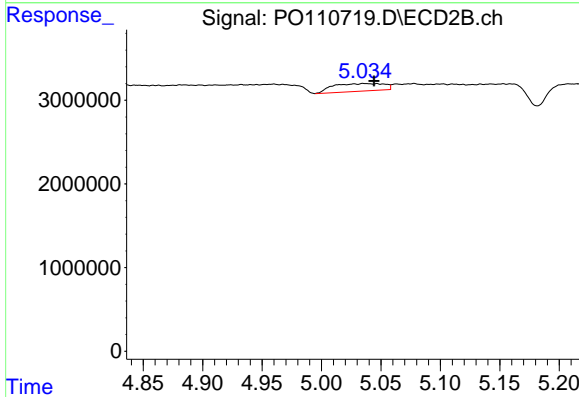
R.T.: 4.960 min  
 Delta R.T.: 0.000 min  
 Response: 1421606  
 Conc: 12.30 ng/ml



#19 AR-1242-4

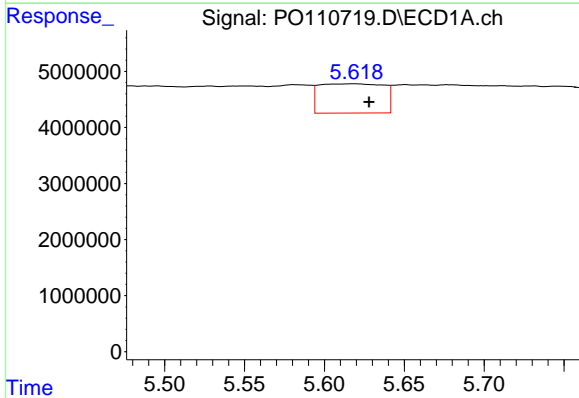
R.T.: 4.974 min  
 Delta R.T.: -0.002 min  
 Response: 8104929  
 Conc: 38.35 ng/ml

Instrument :  
 ECD\_O  
 ClientSampleId :  
 HEXANE



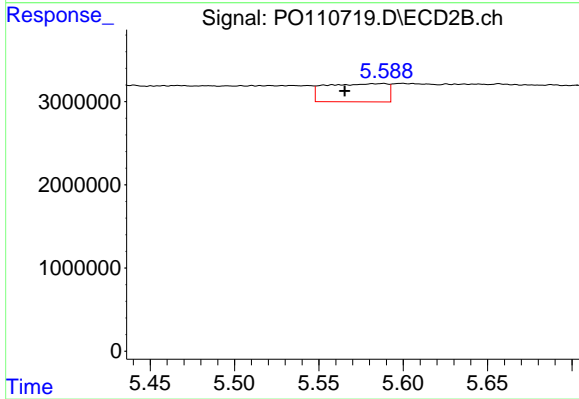
#19 AR-1242-4

R.T.: 5.036 min  
 Delta R.T.: -0.009 min  
 Response: 2722868  
 Conc: 22.67 ng/ml



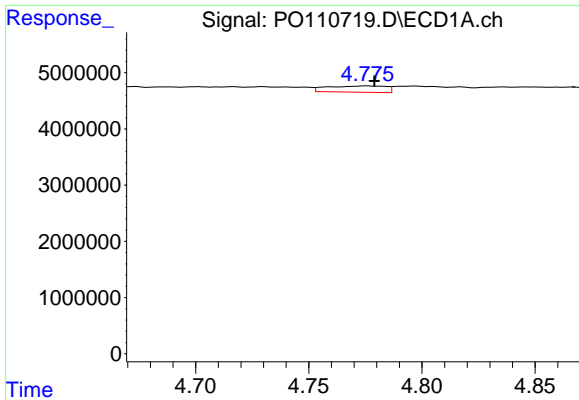
#20 AR-1242-5

R.T.: 5.619 min  
 Delta R.T.: -0.009 min  
 Response: 14583948  
 Conc: 64.42 ng/ml



#20 AR-1242-5

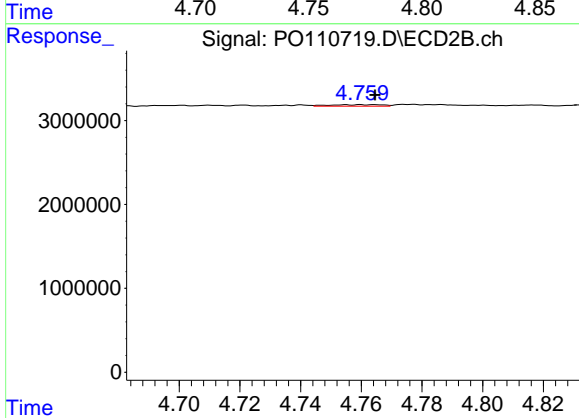
R.T.: 5.588 min  
 Delta R.T.: 0.023 min  
 Response: 5566848  
 Conc: 38.37 ng/ml



#21 AR-1248-1

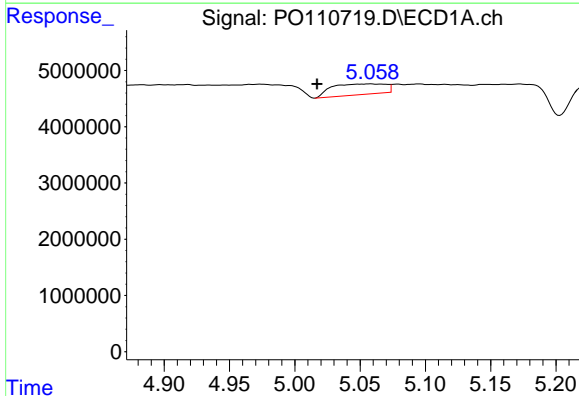
R.T.: 4.776 min  
 Delta R.T.: -0.003 min  
 Response: 2039055  
 Conc: 9.58 ng/ml

Instrument :  
 ECD\_O  
 ClientSampleId :  
 HEXANE



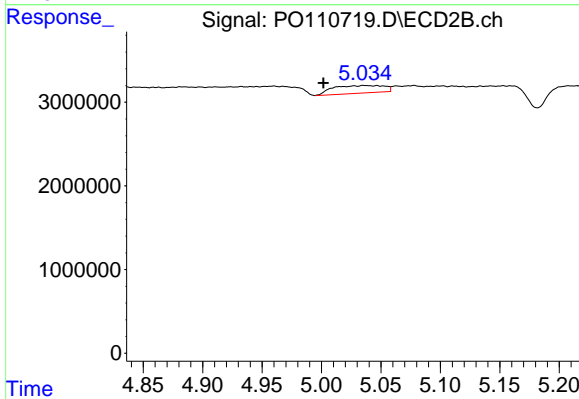
#21 AR-1248-1

R.T.: 4.760 min  
 Delta R.T.: -0.004 min  
 Response: 215803  
 Conc: 1.87 ng/ml



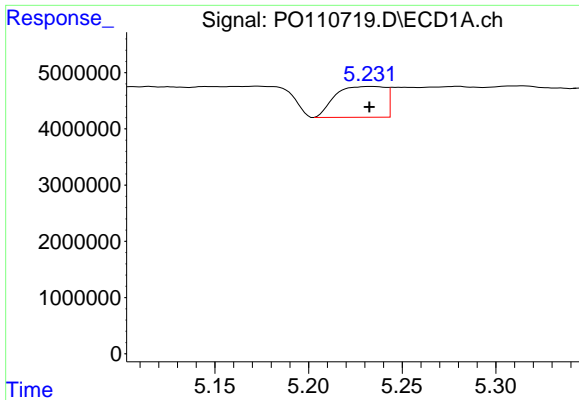
#22 AR-1248-2

R.T.: 5.058 min  
 Delta R.T.: 0.041 min  
 Response: 5457865  
 Conc: 18.44 ng/ml



#22 AR-1248-2

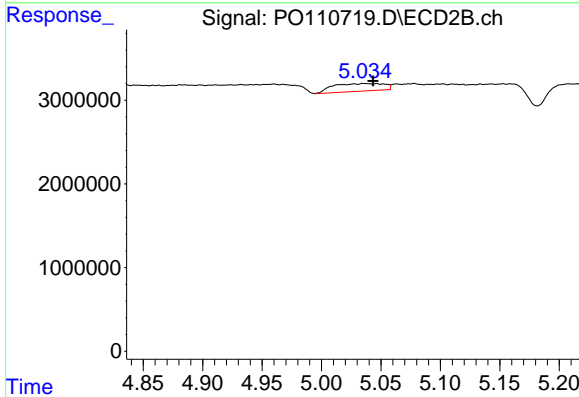
R.T.: 5.036 min  
 Delta R.T.: 0.034 min  
 Response: 2722868  
 Conc: 16.72 ng/ml



#23 AR-1248-3

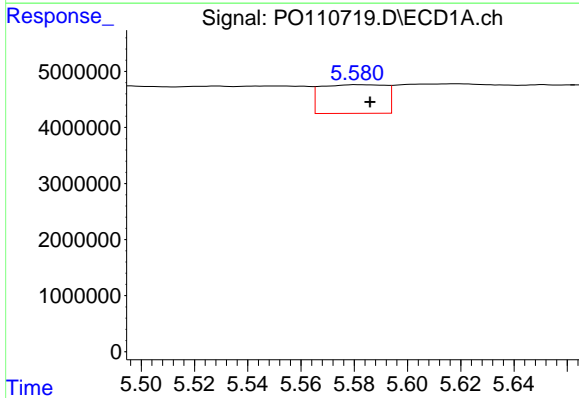
R.T.: 5.233 min  
 Delta R.T.: 0.000 min  
 Response: 10151166  
 Conc: 27.44 ng/ml

Instrument :  
 ECD\_O  
 ClientSampleId :  
 HEXANE



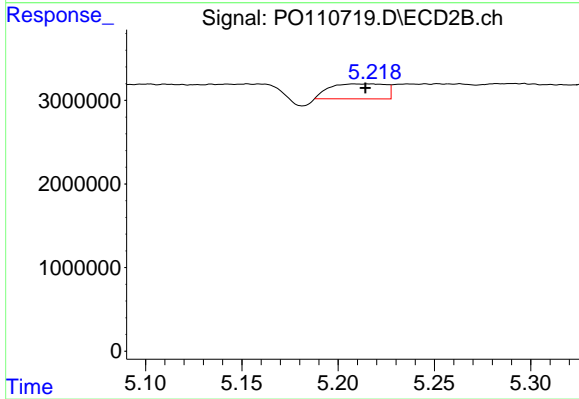
#23 AR-1248-3

R.T.: 5.036 min  
 Delta R.T.: -0.008 min  
 Response: 2722868  
 Conc: 15.48 ng/ml



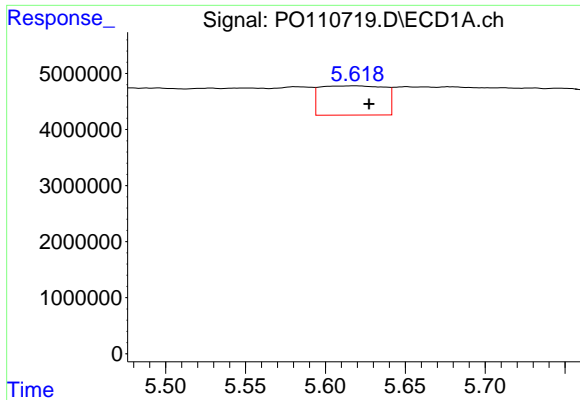
#24 AR-1248-4

R.T.: 5.582 min  
 Delta R.T.: -0.004 min  
 Response: 8604327  
 Conc: 16.55 ng/ml



#24 AR-1248-4

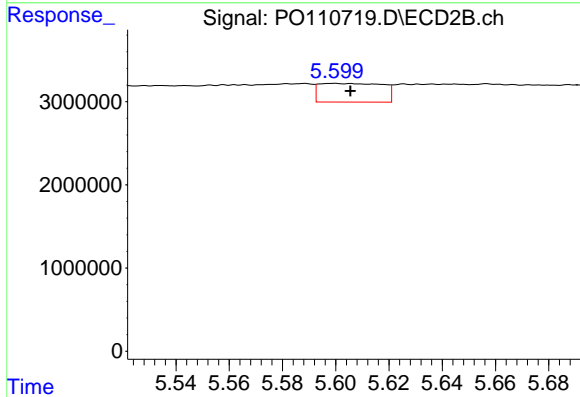
R.T.: 5.208 min  
 Delta R.T.: -0.006 min  
 Response: 3629398  
 Conc: 17.82 ng/ml



#25 AR-1248-5

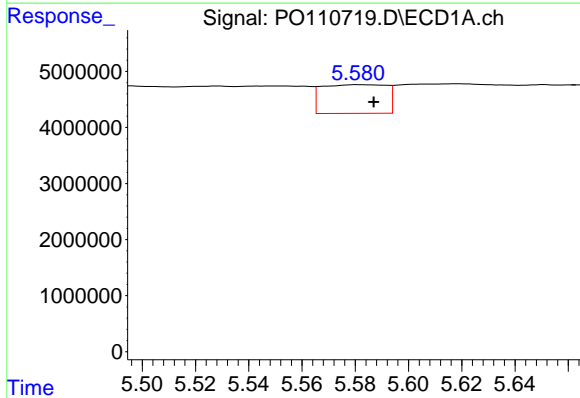
R.T.: 5.619 min  
 Delta R.T.: -0.008 min  
 Response: 14583948  
 Conc: 39.48 ng/ml

Instrument :  
 ECD\_O  
 ClientSampleId :  
 HEXANE



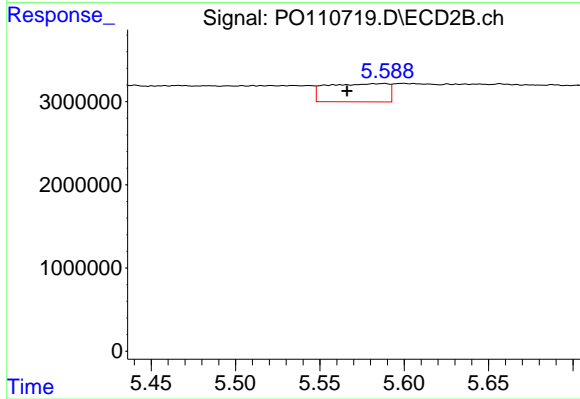
#25 AR-1248-5

R.T.: 5.599 min  
 Delta R.T.: -0.006 min  
 Response: 3701395  
 Conc: 18.75 ng/ml



#26 AR-1254-1

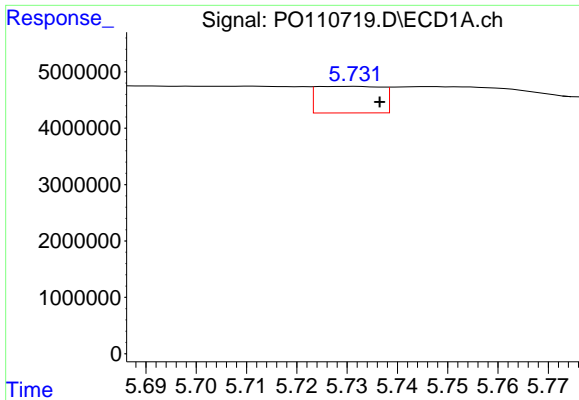
R.T.: 5.582 min  
 Delta R.T.: -0.005 min  
 Response: 8604327  
 Conc: 15.42 ng/ml



#26 AR-1254-1

R.T.: 5.588 min  
 Delta R.T.: 0.022 min  
 Response: 5566848  
 Conc: 18.46 ng/ml

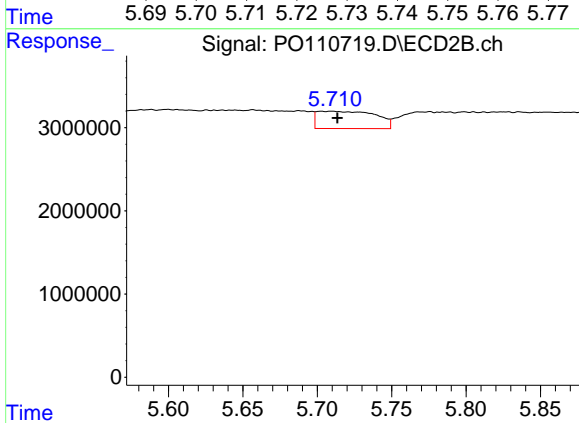




#27 AR-1254-2

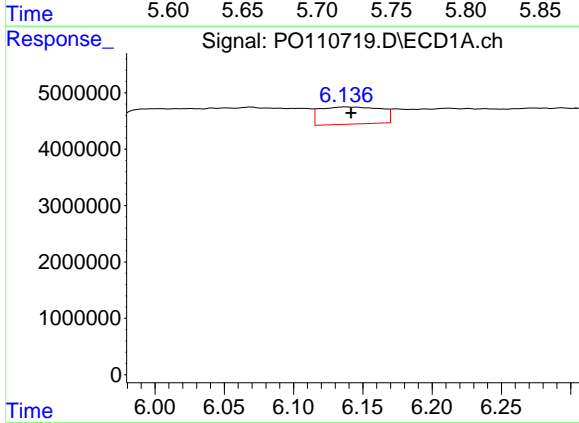
R.T.: 5.732 min  
 Delta R.T.: -0.005 min  
 Response: 4244160  
 Conc: 8.74 ng/ml

Instrument :  
 ECD\_O  
 ClientSampleId :  
 HEXANE



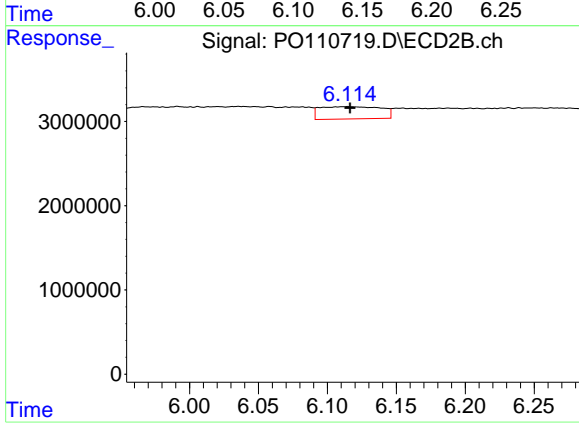
#27 AR-1254-2

R.T.: 5.703 min  
 Delta R.T.: -0.011 min  
 Response: 5702365  
 Conc: 21.54 ng/ml



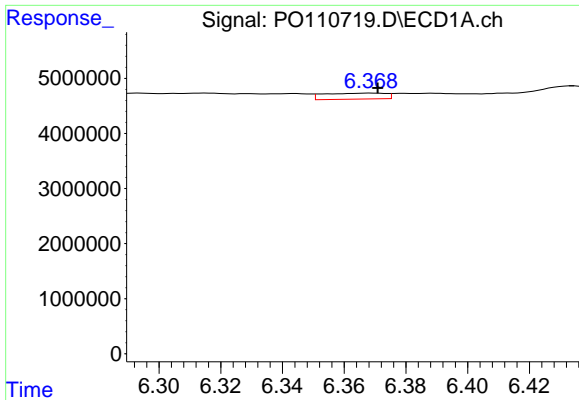
#28 AR-1254-3

R.T.: 6.138 min  
 Delta R.T.: -0.004 min  
 Response: 9345352  
 Conc: 11.93 ng/ml



#28 AR-1254-3

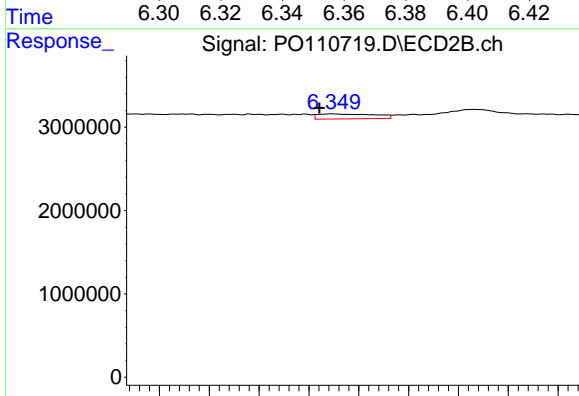
R.T.: 6.115 min  
 Delta R.T.: -0.002 min  
 Response: 4530721  
 Conc: 11.23 ng/ml



#29 AR-1254-4

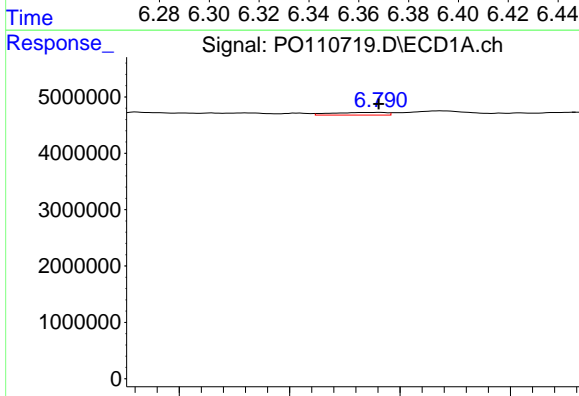
R.T.: 6.369 min  
 Delta R.T.: -0.002 min  
 Response: 1498101  
 Conc: 3.07 ng/ml

Instrument :  
 ECD\_O  
 ClientSampleId :  
 HEXANE



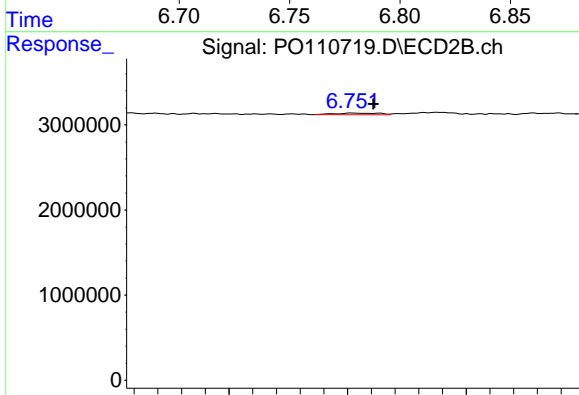
#29 AR-1254-4

R.T.: 6.350 min  
 Delta R.T.: 0.005 min  
 Response: 950060  
 Conc: 4.14 ng/ml



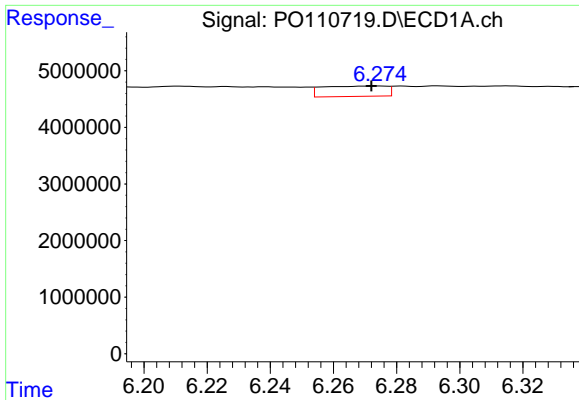
#30 AR-1254-5

R.T.: 6.791 min  
 Delta R.T.: 0.000 min  
 Response: 809747  
 Conc: 1.16 ng/ml



#30 AR-1254-5

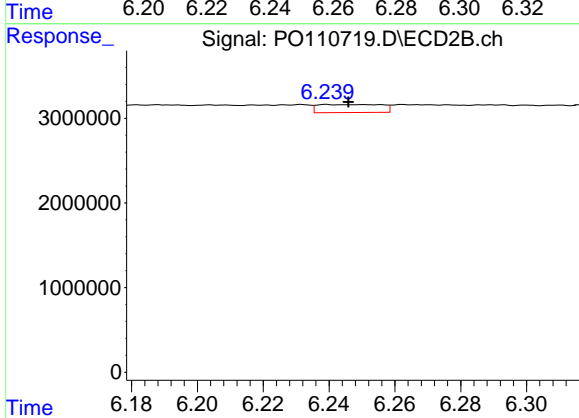
R.T.: 6.752 min  
 Delta R.T.: -0.009 min  
 Response: 236605  
 Conc: 0.71 ng/ml



#31 AR-1260-1

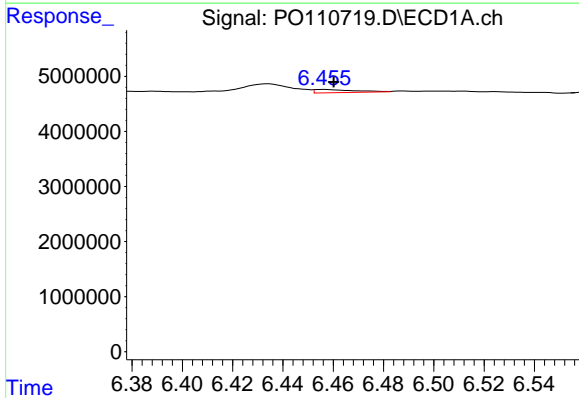
R.T.: 6.274 min  
 Delta R.T.: 0.002 min  
 Response: 2595612  
 Conc: 5.49 ng/ml

Instrument :  
 ECD\_O  
 ClientSampleId :  
 HEXANE



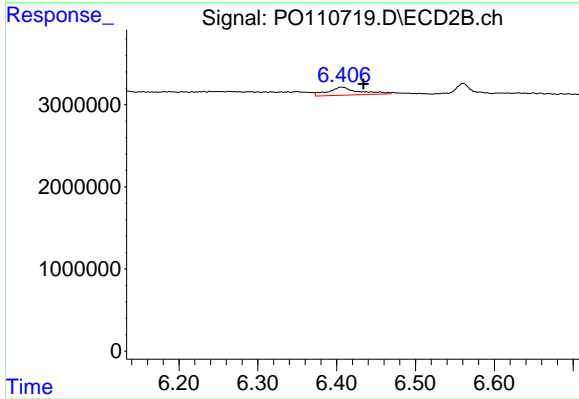
#31 AR-1260-1

R.T.: 6.240 min  
 Delta R.T.: -0.006 min  
 Response: 1263617  
 Conc: 5.14 ng/ml



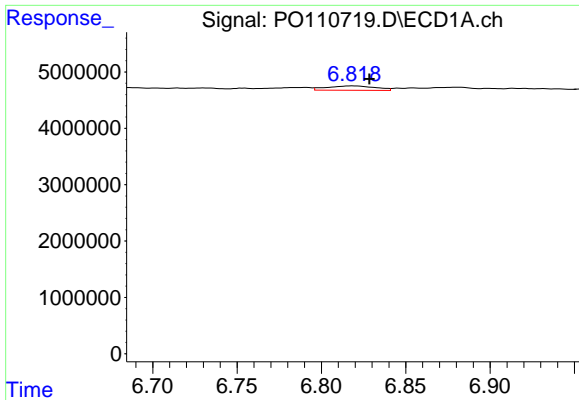
#32 AR-1260-2

R.T.: 6.456 min  
 Delta R.T.: -0.004 min  
 Response: 646519  
 Conc: 1.10 ng/ml



#32 AR-1260-2

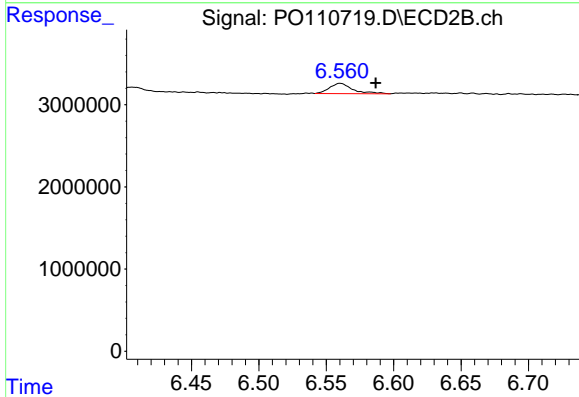
R.T.: 6.406 min  
 Delta R.T.: -0.028 min  
 Response: 2640062  
 Conc: 9.05 ng/ml



#33 AR-1260-3

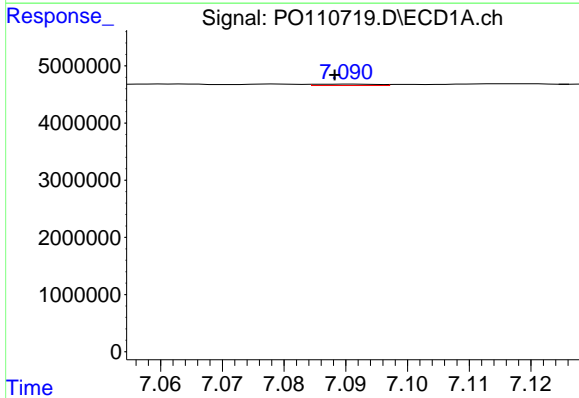
R.T.: 6.819 min  
 Delta R.T.: -0.010 min  
 Response: 1541216  
 Conc: 3.13 ng/ml

Instrument :  
 ECD\_O  
 ClientSampleId :  
 HEXANE



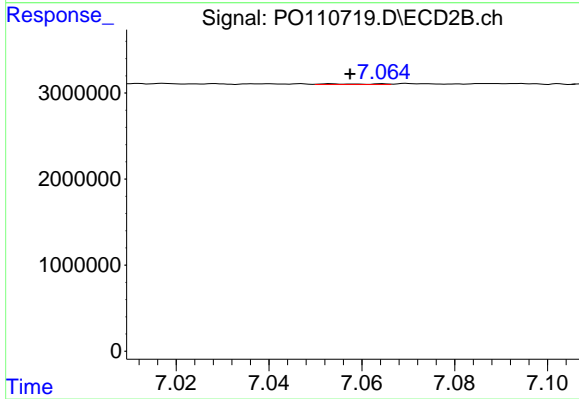
#33 AR-1260-3

R.T.: 6.560 min  
 Delta R.T.: -0.026 min  
 Response: 1503547  
 Conc: 5.55 ng/ml



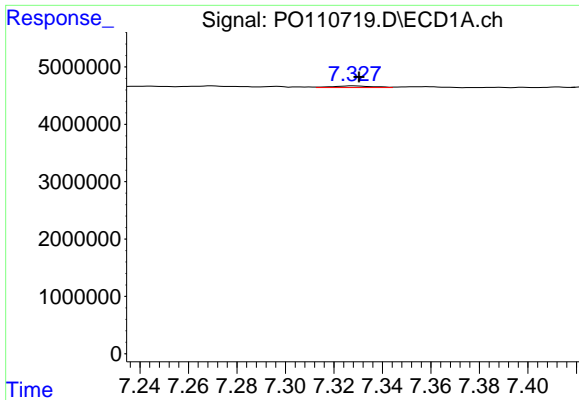
#34 AR-1260-4

R.T.: 7.090 min  
 Delta R.T.: 0.002 min  
 Response: 163905  
 Conc: 0.39 ng/ml



#34 AR-1260-4

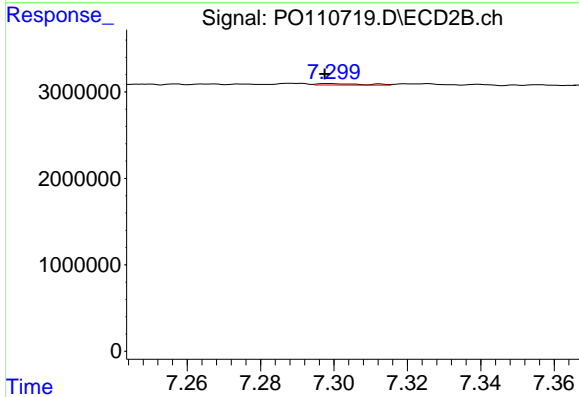
R.T.: 7.053 min  
 Delta R.T.: -0.004 min  
 Response: 60975  
 Conc: 0.30 ng/ml



#35 AR-1260-5

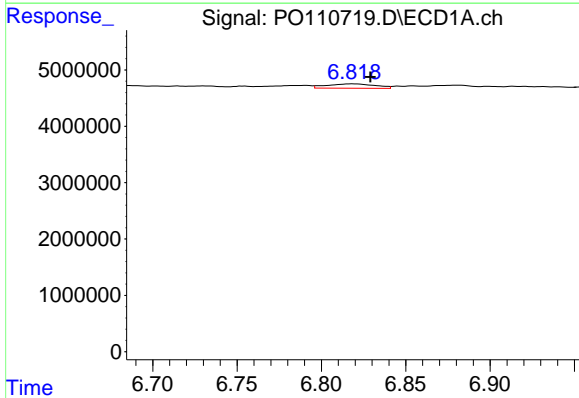
R.T.: 7.328 min  
 Delta R.T.: -0.002 min  
 Response: 335304  
 Conc: 0.32 ng/ml

Instrument :  
 ECD\_O  
 ClientSampleId :  
 HEXANE



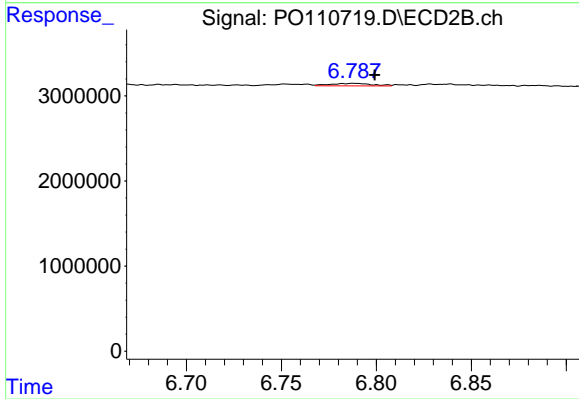
#35 AR-1260-5

R.T.: 7.299 min  
 Delta R.T.: 0.001 min  
 Response: 152447  
 Conc: 0.33 ng/ml



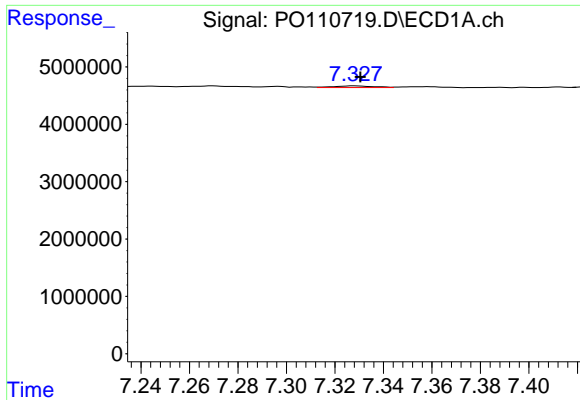
#36 AR-1262-1

R.T.: 6.819 min  
 Delta R.T.: -0.010 min  
 Response: 1541216  
 Conc: 2.20 ng/ml



#36 AR-1262-1

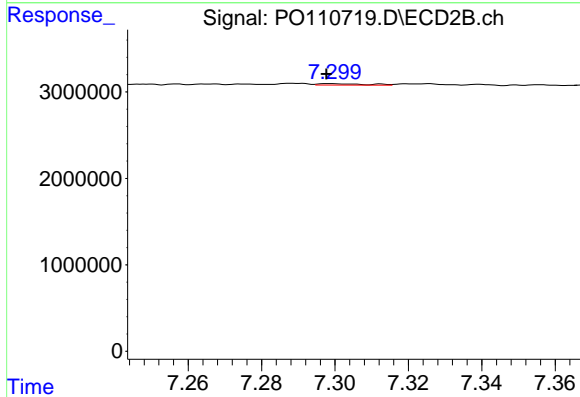
R.T.: 6.788 min  
 Delta R.T.: -0.011 min  
 Response: 430189  
 Conc: 1.31 ng/ml



#37 AR-1262-2

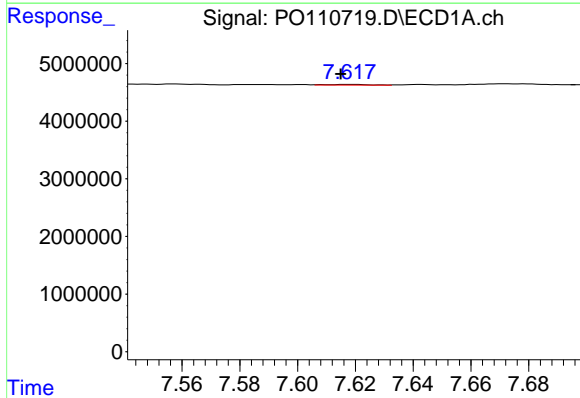
R.T.: 7.328 min  
 Delta R.T.: -0.002 min  
 Response: 335304  
 Conc: 0.28 ng/ml

Instrument :  
 ECD\_O  
 ClientSampleId :  
 HEXANE



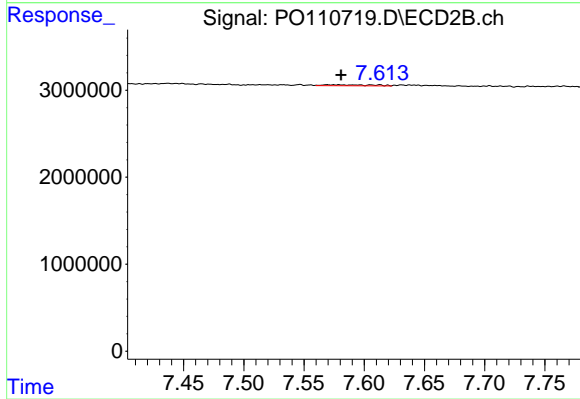
#37 AR-1262-2

R.T.: 7.299 min  
 Delta R.T.: 0.000 min  
 Response: 152447  
 Conc: 0.30 ng/ml



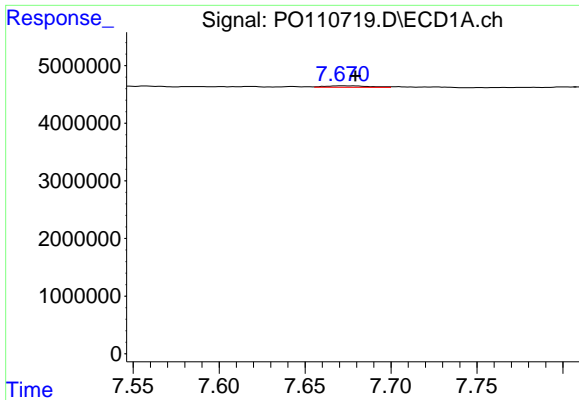
#38 AR-1262-3

R.T.: 7.617 min  
 Delta R.T.: 0.002 min  
 Response: 127015  
 Conc: 0.25 ng/ml



#38 AR-1262-3

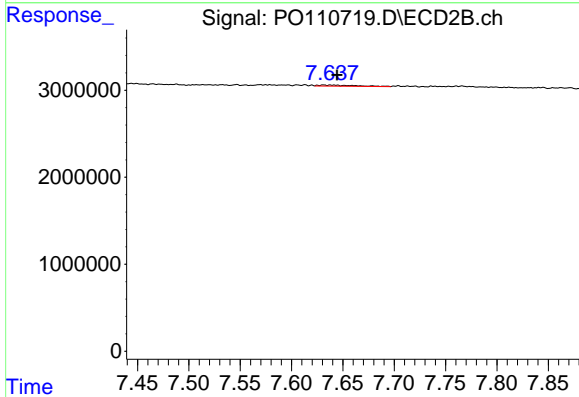
R.T.: 7.569 min  
 Delta R.T.: -0.011 min  
 Response: 316865  
 Conc: 1.64 ng/ml



#39 AR-1262-4

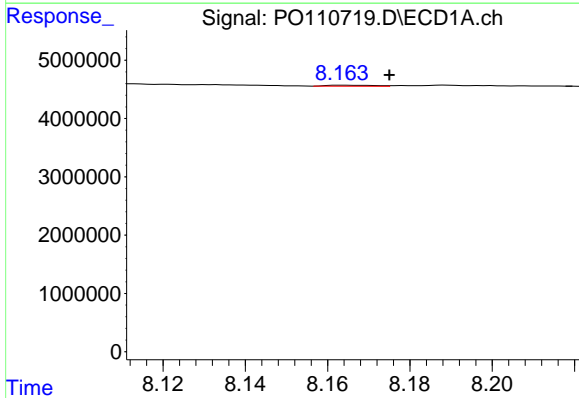
R.T.: 7.672 min  
 Delta R.T.: -0.007 min  
 Response: 466916  
 Conc: 0.52 ng/ml

Instrument :  
 ECD\_O  
 ClientSampleId :  
 HEXANE



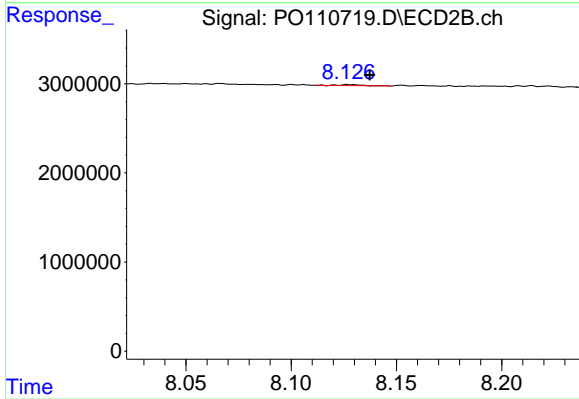
#39 AR-1262-4

R.T.: 7.638 min  
 Delta R.T.: -0.006 min  
 Response: 320156  
 Conc: 0.92 ng/ml



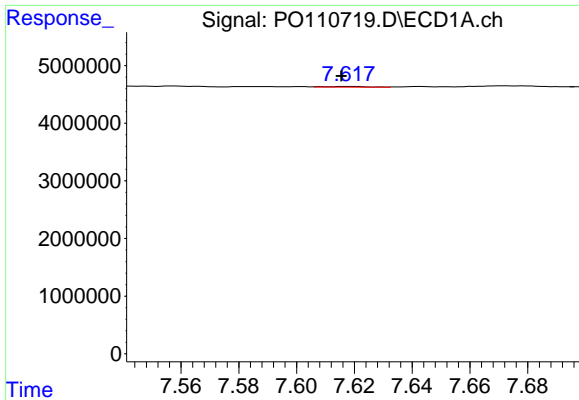
#40 AR-1262-5

R.T.: 8.164 min  
 Delta R.T.: -0.011 min  
 Response: 132749  
 Conc: 0.33 ng/ml



#40 AR-1262-5

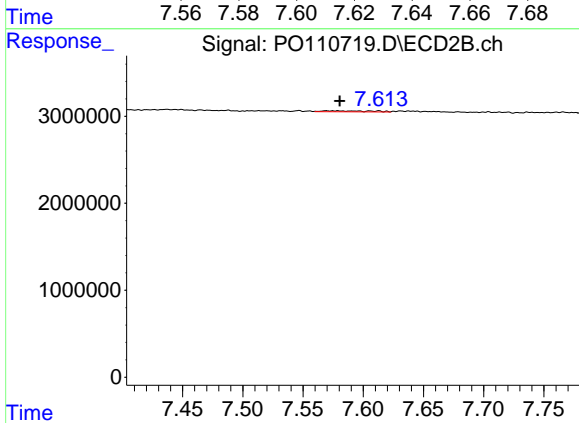
R.T.: 8.127 min  
 Delta R.T.: -0.010 min  
 Response: 75709  
 Conc: 0.61 ng/ml



#41 AR-1268-1

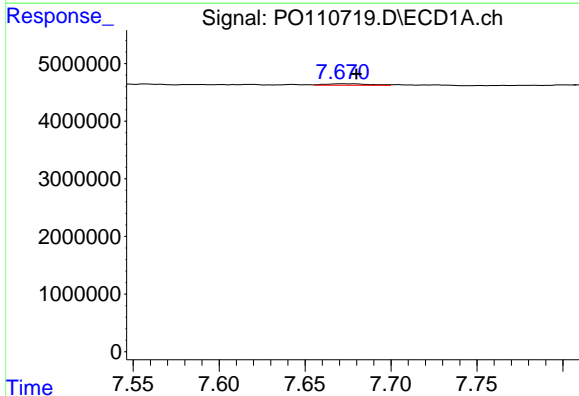
R.T.: 7.617 min  
 Delta R.T.: 0.002 min  
 Response: 127015  
 Conc: 0.09 ng/ml

Instrument :  
 ECD\_O  
 ClientSampleId :  
 HEXANE



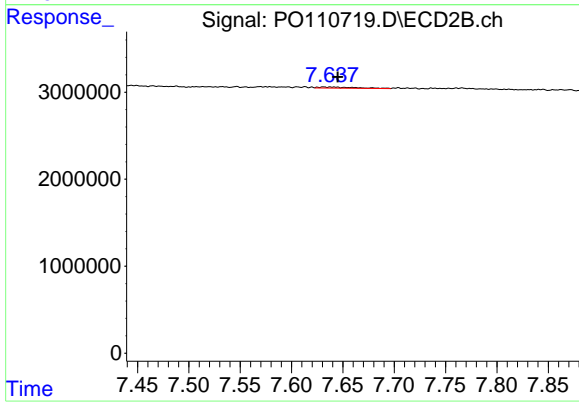
#41 AR-1268-1

R.T.: 7.569 min  
 Delta R.T.: -0.011 min  
 Response: 316865  
 Conc: 0.58 ng/ml



#42 AR-1268-2

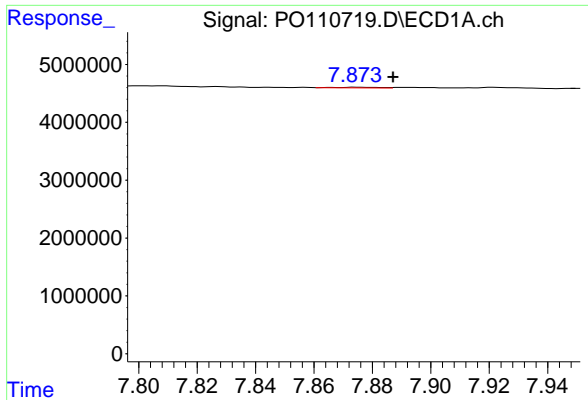
R.T.: 7.672 min  
 Delta R.T.: -0.008 min  
 Response: 466916  
 Conc: 0.36 ng/ml



#42 AR-1268-2

R.T.: 7.638 min  
 Delta R.T.: -0.007 min  
 Response: 320156  
 Conc: 0.64 ng/ml

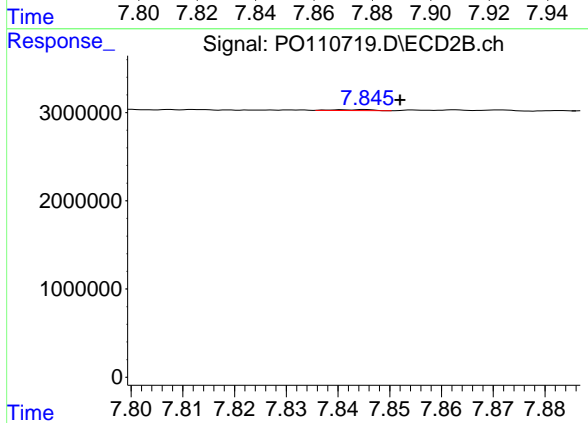




#43 AR-1268-3

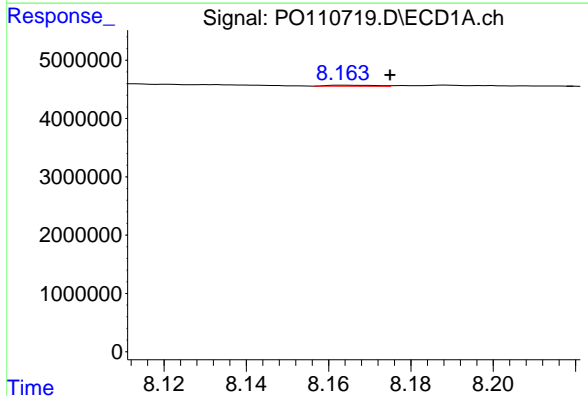
R.T.: 7.875 min  
 Delta R.T.: -0.013 min  
 Response: 106889  
 Conc: 0.10 ng/ml

Instrument :  
 ECD\_O  
 ClientSampleId :  
 HEXANE



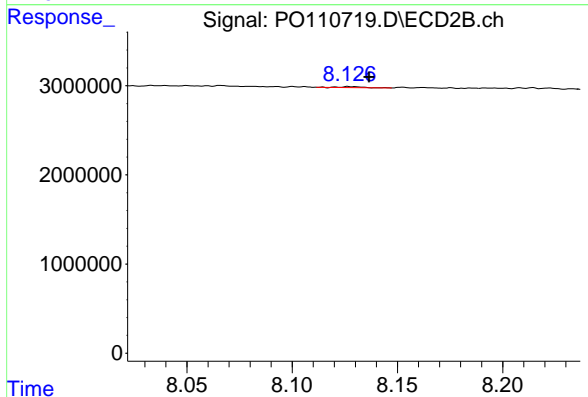
#43 AR-1268-3

R.T.: 7.845 min  
 Delta R.T.: -0.007 min  
 Response: 54860  
 Conc: 0.15 ng/ml



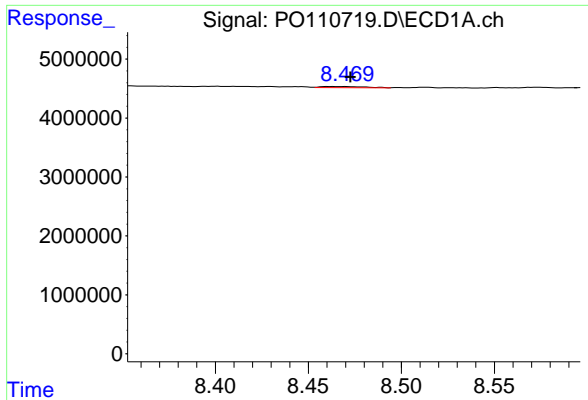
#44 AR-1268-4

R.T.: 8.164 min  
 Delta R.T.: -0.011 min  
 Response: 132749  
 Conc: 0.30 ng/ml



#44 AR-1268-4

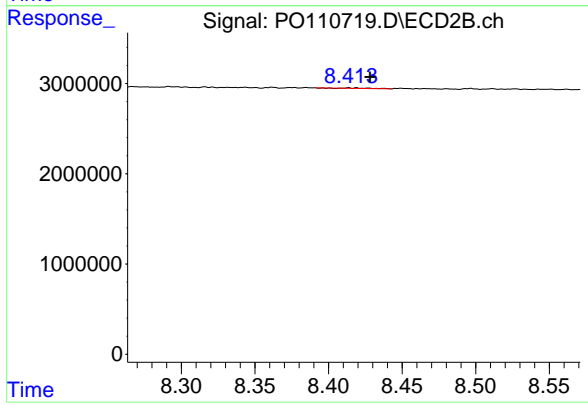
R.T.: 8.127 min  
 Delta R.T.: -0.009 min  
 Response: 75709  
 Conc: 0.54 ng/ml



#45 AR-1268-5

R.T.: 8.464 min  
 Delta R.T.: -0.009 min  
 Response: 345693  
 Conc: 0.11 ng/ml

Instrument :  
 ECD\_O  
 ClientSampleId :  
 HEXANE



#45 AR-1268-5

R.T.: 8.413 min  
 Delta R.T.: -0.015 min  
 Response: 38184  
 Conc: 0.05 ng/ml