

Data Path : Z:\pestpcbsrv\HPCHEM1\ECD_0\Data\P0042621\
 Data File : P0077338.D
 Signal(s) : Signal #1: ECD1A.CH Signal #2: ECD2B.CH
 Acq On : 27 Apr 2021 3:30
 Operator : DD\AJ
 Sample : AR1660CCC500
 Misc :
 ALS Vial : 3 Sample Multiplier: 1

Instrument :
 ECD_O
 ClientSampleId :
 AR1660CCC500

Integration File signal 1: autoint1.e
 Integration File signal 2: autoint2.e
 Quant Time: Apr 27 07:44:36 2021
 Quant Method : Z:\pestpcbsrv\HPCHEM1\ECD_0\methods\P0042121.M
 Quant Title : GC EXTRACTABLES
 QLast Update : Wed Apr 21 09:50:22 2021
 Response via : Initial Calibration
 Integrator: ChemStation 6890 Scale Mode: Small noise peaks clipped

Volume Inj. : 2 µl
 Signal #1 Phase : ZB-MR1 Signal #2 Phase: ZB-MR2
 Signal #1 Info : 30Mx0.32mmx 0.50µ Signal #2 Info : 30M x 0.32mm x 0.25µm

Compound	RT#1	RT#2	Resp#1	Resp#2	ng/ml	ng/ml

System Monitoring Compounds						
1) SA Tetrachlo...	4.895	3.890	5523814	2587353	52.268	49.178
2) SA Decachlor...	10.858	9.123	6365801	1988153	61.314	52.689
Target Compounds						
3) L1 AR-1016-1	6.217	5.132	1875751	752779	502.713	494.158
4) L1 AR-1016-2	6.241	5.151	2967094	1501708	508.426	492.941
5) L1 AR-1016-3	6.306	5.340	1804402	665831	507.202	490.190
6) L1 AR-1016-4	6.414	5.390	1388010	607698	500.683	477.683
7) L1 AR-1016-5	6.726	5.616	1467069	644569	541.299	435.700
8) L2 AR-1221-1	5.144	4.146	169545	85039	149.484	140.689
9) L2 AR-1221-2	5.247	4.244	235858	117897	277.654	258.027
10) L2 AR-1221-3	5.333	4.332	939998	474438	334.582	322.037
11) L3 AR-1232-1	5.333	4.332	939998	474438	463.723	441.052
12) L3 AR-1232-2	5.919	5.151	1446971	1501708	1300.481	1237.679
13) L3 AR-1232-3	6.241	5.340	2967094	665831	1301.098	1166.225
14) L3 AR-1232-4	6.414	5.434	1388010	691448	1348.810	1212.458
15) L3 AR-1232-5	6.509	5.616	1125703	644569	1536.388	1082.219 #
16) L4 AR-1242-1	6.217	5.132	1875751	752779	690.494	687.170
17) L4 AR-1242-2	6.241	5.151	2967094	1501708	672.606	660.958
18) L4 AR-1242-3	6.306	5.340	1804402	665831	650.599	651.714
19) L4 AR-1242-4	6.414	5.434	1388010	691448	646.915	608.615
20) L4 AR-1242-5	7.196	5.991	299814	626059	129.663	446.190 #
21) L5 AR-1248-1	6.217	5.132	1875751	752779	897.150	854.340
22) L5 AR-1248-2	6.509	5.390	1125703	607698	371.041	369.875
23) L5 AR-1248-3	6.726	5.434	1467069	691448	418.564	430.350
24) L5 AR-1248-4	7.156	5.616	342923	644569	84.852	343.483 #
25) L5 AR-1248-5	7.196	6.037	299814	104986	73.387	49.313 #
26) L6 AR-1254-1	7.123	5.991	1310871	626059	318.778	216.885 #
27) L6 AR-1254-2	7.353	6.151	1225185	599091	189.299	232.047
28) L6 AR-1254-3	7.735	6.584	757754	1066457	111.980	272.581 #
29) L6 AR-1254-4	8.029	6.808	544726	110485	110.766	48.628 #
30) L6 AR-1254-5	8.457	7.231	3871467	2015932	695.439	556.000
31) L7 AR-1260-1	7.901	6.702	2863505	1501252	529.234	502.875
32) L7 AR-1260-2	8.167	6.900	3154178	1832380	499.523	513.990
33) L7 AR-1260-3	8.530	7.052	2196676	1659624	538.161	504.705
34) L7 AR-1260-4	8.761	7.531	2518971	1202996	520.708	510.760
35) L7 AR-1260-5	9.084	7.780	4896421	2710365	526.546	504.903
36) L8 AR-1262-1	8.530	7.231	2196676	2015932	327.189	1079.511 #
37) L8 AR-1262-2	9.084	7.780	4896421	2710365	421.514	436.659
38) L8 AR-1262-3	9.409f	8.063	3081649	523170	400.133	216.429 #
39) L8 AR-1262-4	9.463f	8.125	1842509	1830450	306.584	409.493 #
40) L8 AR-1262-5	10.132	8.623	1326403	523688	313.931	284.599
41) L9 AR-1268-1	9.409f	8.063	3081649	523170	216.537	74.198 #
42) L9 AR-1268-2	9.463f	8.125	1842509	1830450	139.732	284.973 #

Data Path : Z:\pestpcbsrv\HPCHEM1\ECD_0\Data\P0042621\
 Data File : P0077338.D
 Signal(s) : Signal #1: ECD1A.CH Signal #2: ECD2B.CH
 Acq On : 27 Apr 2021 3:30
 Operator : DD\AJ
 Sample : AR1660CCC500
 Misc :
 ALS Vial : 3 Sample Multiplier: 1

Instrument :
 ECD_0
 ClientSampleId :
 AR1660CCC500

Integration File signal 1: autoint1.e
 Integration File signal 2: autoint2.e
 Quant Time: Apr 27 07:44:36 2021
 Quant Method : Z:\pestpcbsrv\HPCHEM1\ECD_0\methods\P0042121.M
 Quant Title : GC EXTRACTABLES
 QLast Update : Wed Apr 21 09:50:22 2021
 Response via : Initial Calibration
 Integrator: ChemStation 6890 Scale Mode: Small noise peaks clipped

Volume Inj. : 2 µl
 Signal #1 Phase : ZB-MR1 Signal #2 Phase: ZB-MR2
 Signal #1 Info : 30Mx0.32mmx 0.50µ Signal #2 Info : 30M x 0.32mm x 0.25µm

	Compound	RT#1	RT#2	Resp#1	Resp#2	ng/ml	ng/ml
43)	L9 AR-1268-3	9.701	8.330	134313	57116	11.761	10.775
44)	L9 AR-1268-4	10.132	8.623	1326403	523688	273.159	247.344
45)	L9 AR-1268-5	10.534	8.894	653416	204546	16.864	14.581

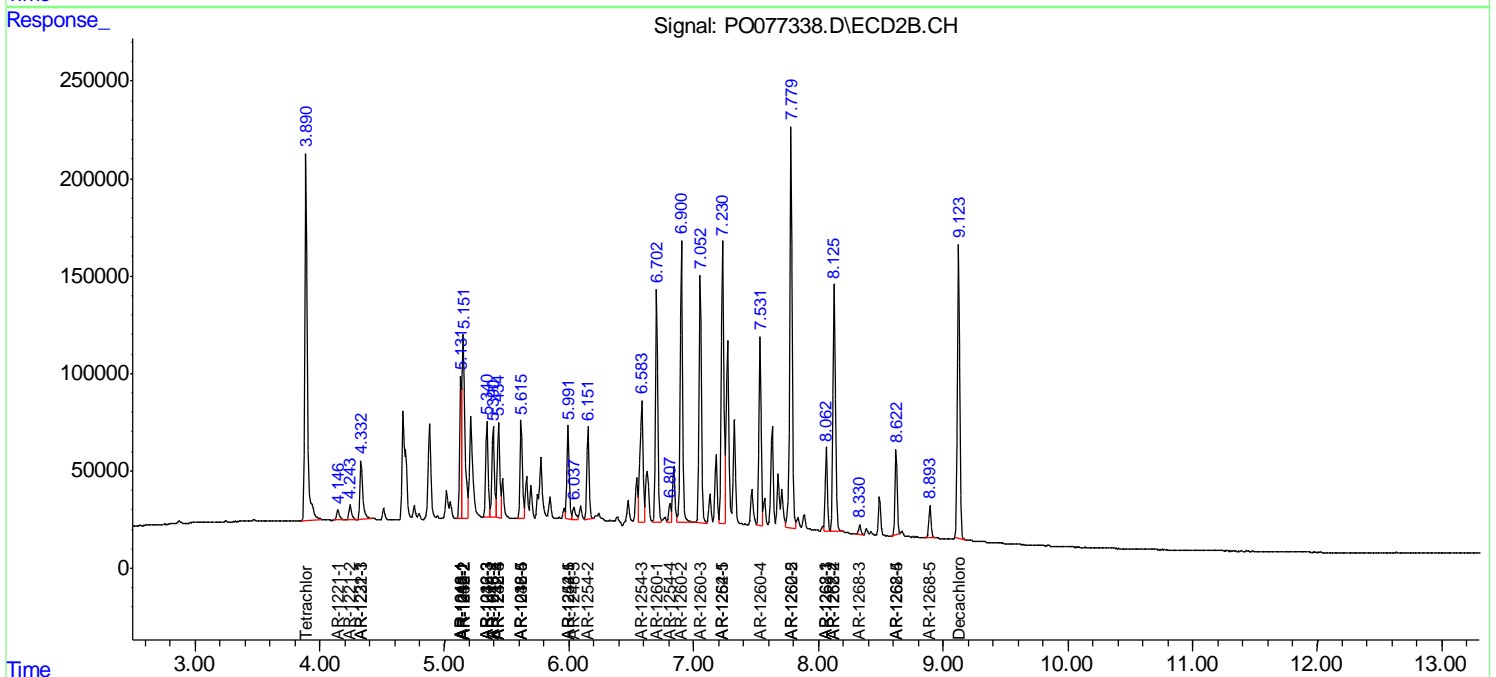
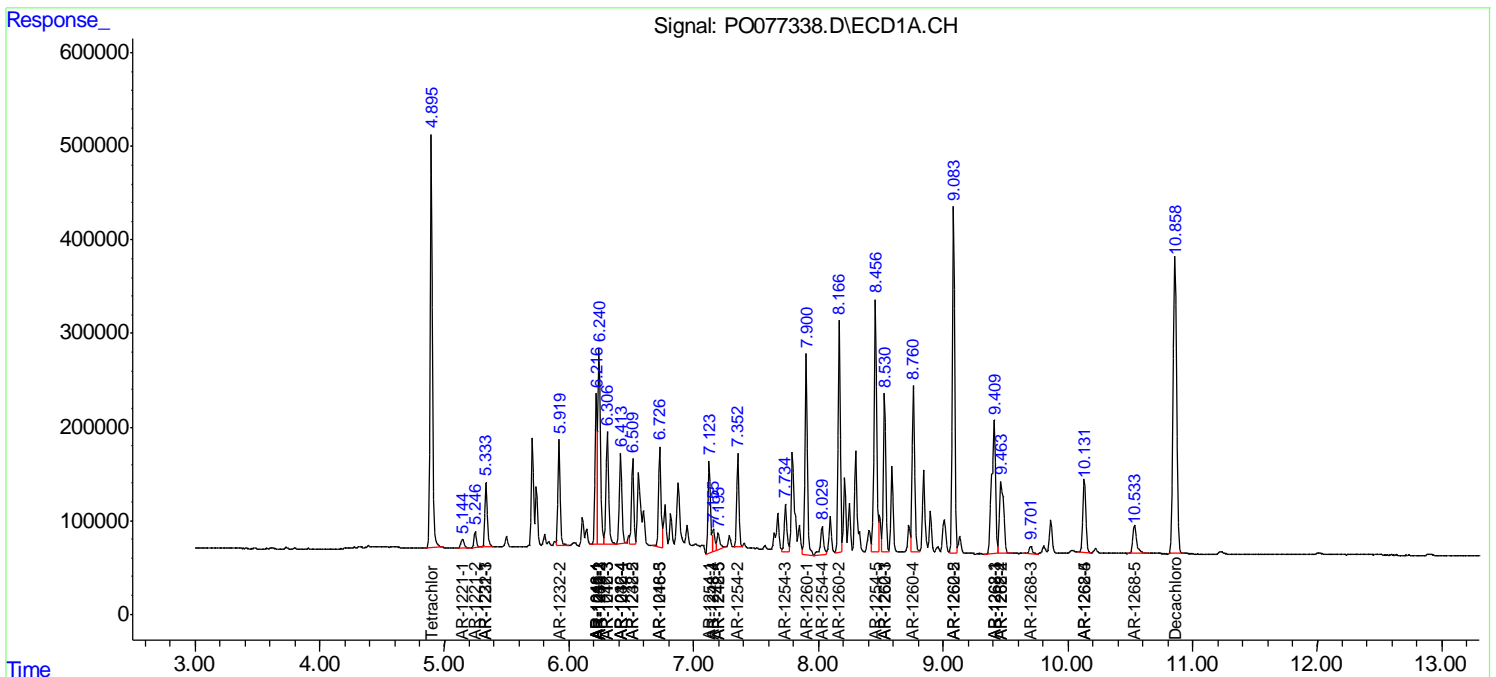
(f)=RT Delta > 1/2 Window (#)=Amounts differ by > 25% (m)=manual int.

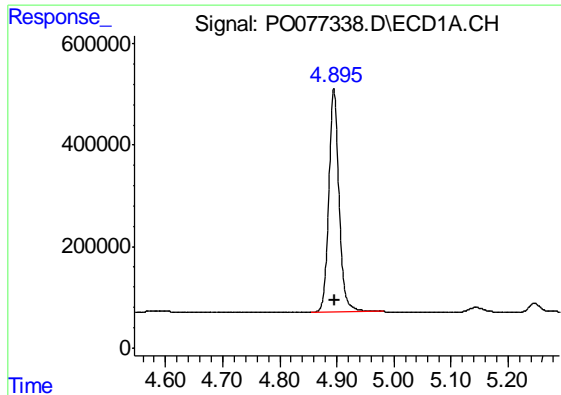
Data Path : Z:\pestpcbsrv\HPCHEM1\ECD_O\Data\PO042621\
 Data File : PO077338.D
 Signal(s) : Signal #1: ECD1A.CH Signal #2: ECD2B.CH
 Acq On : 27 Apr 2021 3:30
 Operator : DD\AJ
 Sample : AR1660CCC500
 Misc :
 ALS Vial : 3 Sample Multiplier: 1

Instrument :
 ECD_O
 ClientSampled :
 AR1660CCC500

Integration File signal 1: autoint1.e
 Integration File signal 2: autoint2.e
 Quant Time: Apr 27 07:44:36 2021
 Quant Method : Z:\pestpcbsrv\HPCHEM1\ECD_O\methods\PO042121.M
 Quant Title : GC EXTRACTABLES
 QLast Update : Wed Apr 21 09:50:22 2021
 Response via : Initial Calibration
 Integrator: ChemStation 6890 Scale Mode: Small noise peaks clipped

Volume Inj. : 2 µl
 Signal #1 Phase : ZB-MR1 Signal #2 Phase: ZB-MR2
 Signal #1 Info : 30Mx0.32mmx 0.50µ Signal #2 Info : 30M x 0.32mm x 0.25µm

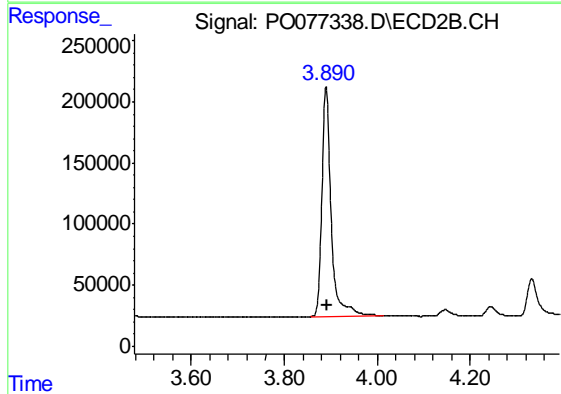




#1 Tetrachloro-m-xylene

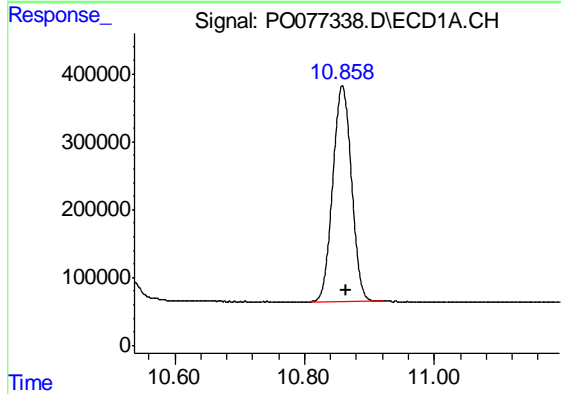
R.T.: 4.895 min
 Delta R.T.: -0.001 min
 Response: 5523814
 Conc: 52.27 ng/ml

Instrument :
 ECD_O
 ClientSampleId :
 AR1660CCC500



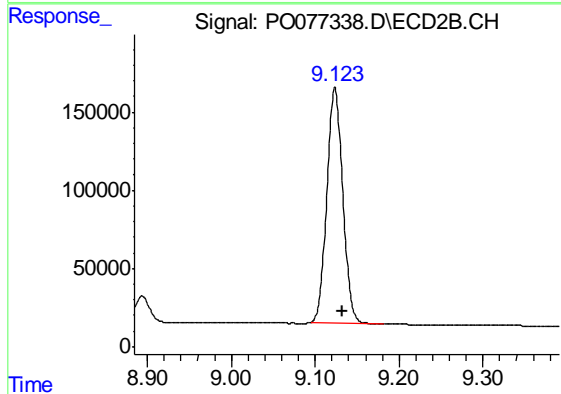
#1 Tetrachloro-m-xylene

R.T.: 3.890 min
 Delta R.T.: -0.003 min
 Response: 2587353
 Conc: 49.18 ng/ml



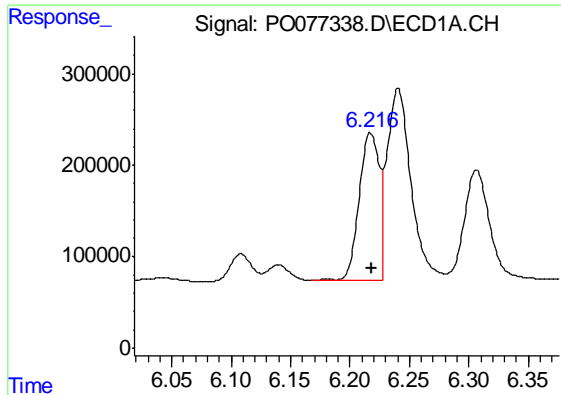
#2 Decachlorobiphenyl

R.T.: 10.858 min
 Delta R.T.: -0.005 min
 Response: 6365801
 Conc: 61.31 ng/ml



#2 Decachlorobiphenyl

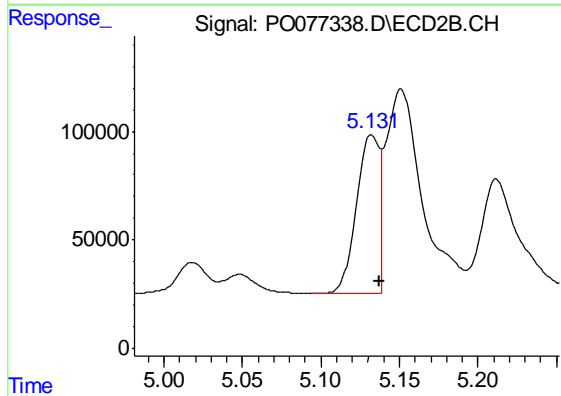
R.T.: 9.123 min
 Delta R.T.: -0.009 min
 Response: 1988153
 Conc: 52.69 ng/ml



#3 AR-1016-1

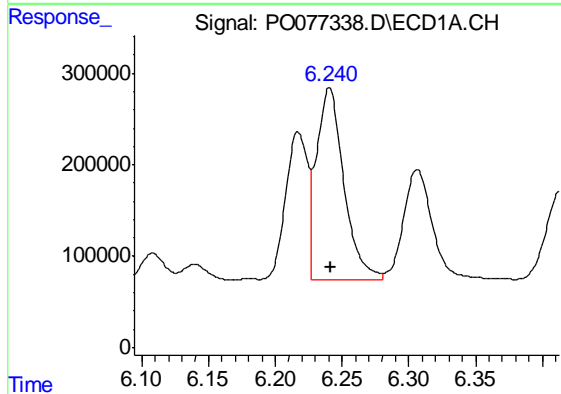
R.T.: 6.217 min
 Delta R.T.: 0.000 min
 Response: 1875751
 Conc: 502.71 ng/ml

Instrument :
 ECD_O
 ClientSampleId :
 AR1660CCC500



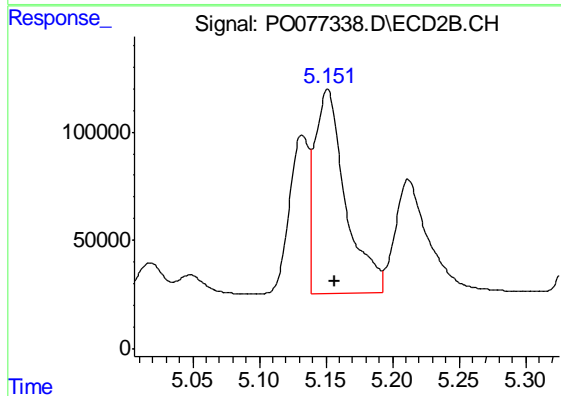
#3 AR-1016-1

R.T.: 5.132 min
 Delta R.T.: -0.005 min
 Response: 752779
 Conc: 494.16 ng/ml



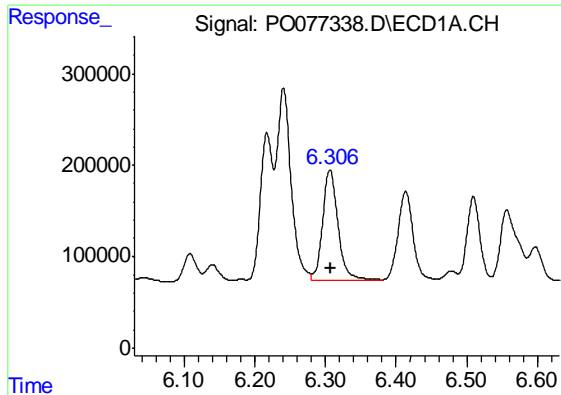
#4 AR-1016-2

R.T.: 6.241 min
 Delta R.T.: -0.001 min
 Response: 2967094
 Conc: 508.43 ng/ml



#4 AR-1016-2

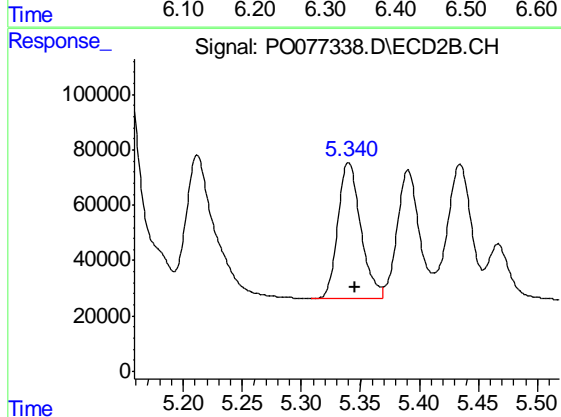
R.T.: 5.151 min
 Delta R.T.: -0.005 min
 Response: 1501708
 Conc: 492.94 ng/ml



#5 AR-1016-3

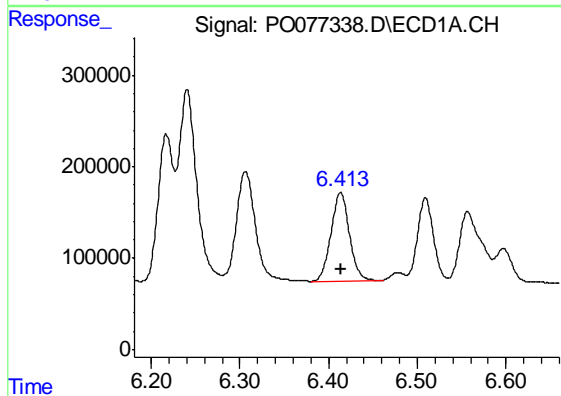
R.T.: 6.306 min
 Delta R.T.: -0.001 min
 Response: 1804402
 Conc: 507.20 ng/ml

Instrument :
 ECD_O
 ClientSampleId :
 AR1660CCC500



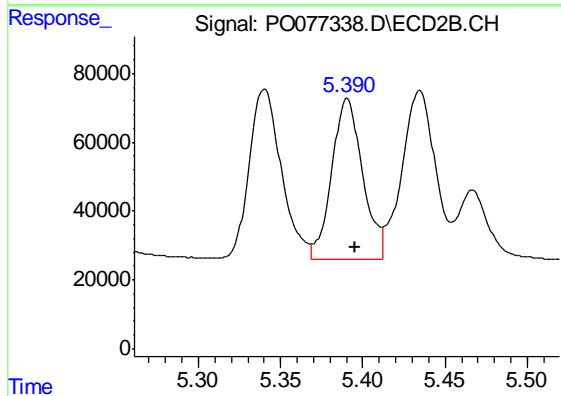
#5 AR-1016-3

R.T.: 5.340 min
 Delta R.T.: -0.005 min
 Response: 665831
 Conc: 490.19 ng/ml



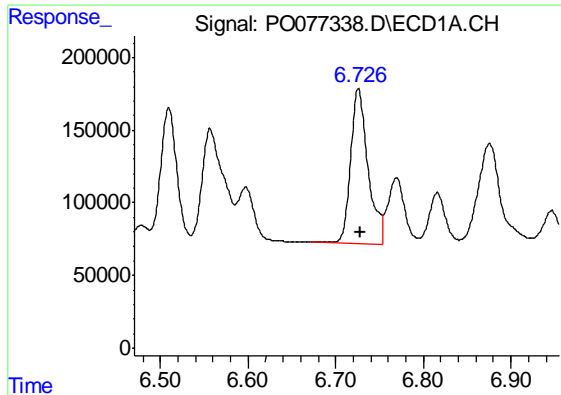
#6 AR-1016-4

R.T.: 6.414 min
 Delta R.T.: 0.000 min
 Response: 1388010
 Conc: 500.68 ng/ml



#6 AR-1016-4

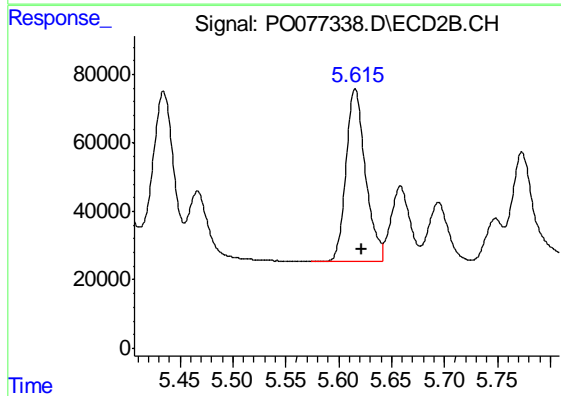
R.T.: 5.390 min
 Delta R.T.: -0.005 min
 Response: 607698
 Conc: 477.68 ng/ml



#7 AR-1016-5

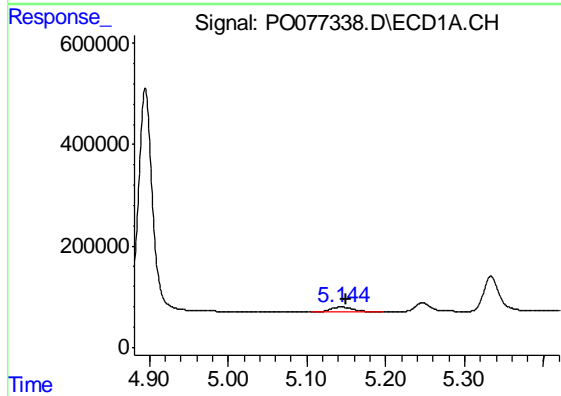
R.T.: 6.726 min
 Delta R.T.: -0.003 min
 Response: 1467069
 Conc: 541.30 ng/ml

Instrument :
 ECD_O
 ClientSampleId :
 AR1660CCC500



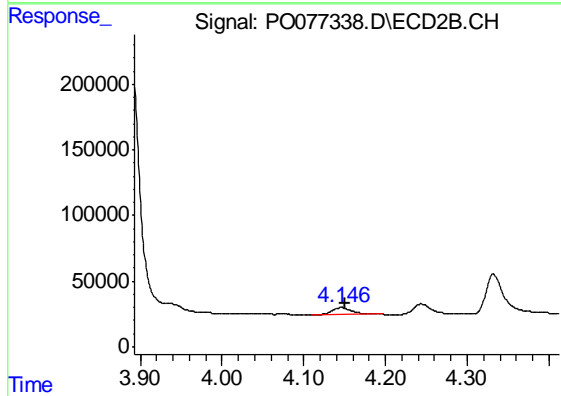
#7 AR-1016-5

R.T.: 5.616 min
 Delta R.T.: -0.007 min
 Response: 644569
 Conc: 435.70 ng/ml



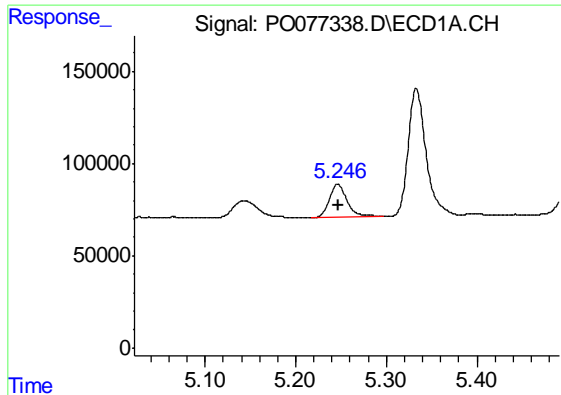
#8 AR-1221-1

R.T.: 5.144 min
 Delta R.T.: -0.006 min
 Response: 169545
 Conc: 149.48 ng/ml



#8 AR-1221-1

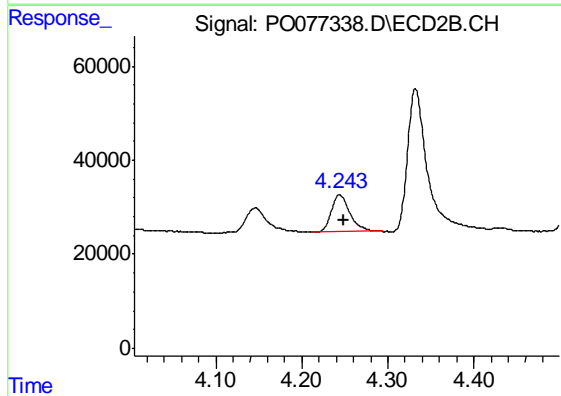
R.T.: 4.146 min
 Delta R.T.: -0.004 min
 Response: 85039
 Conc: 140.69 ng/ml



#9 AR-1221-2

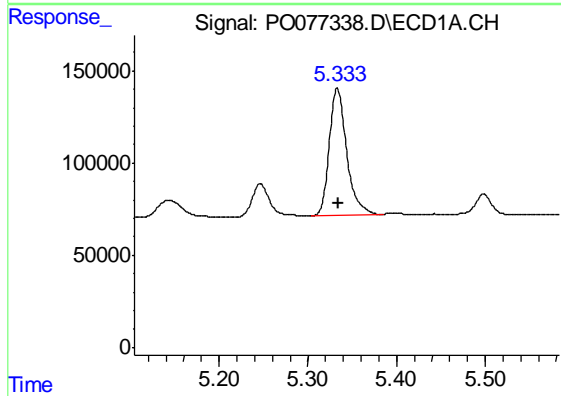
R.T.: 5.247 min
 Delta R.T.: 0.000 min
 Response: 235858
 Conc: 277.65 ng/ml

Instrument :
 ECD_O
 ClientSampleId :
 AR1660CCC500



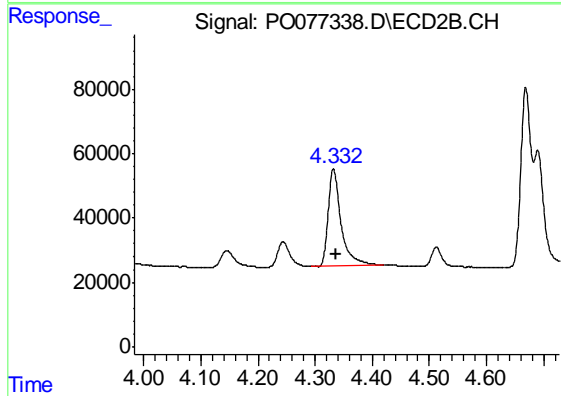
#9 AR-1221-2

R.T.: 4.244 min
 Delta R.T.: -0.005 min
 Response: 117897
 Conc: 258.03 ng/ml



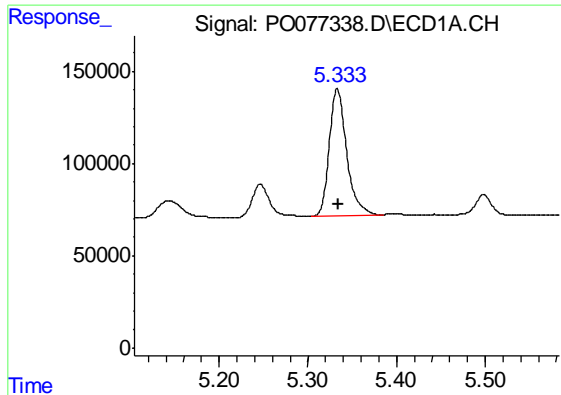
#10 AR-1221-3

R.T.: 5.333 min
 Delta R.T.: -0.001 min
 Response: 939998
 Conc: 334.58 ng/ml



#10 AR-1221-3

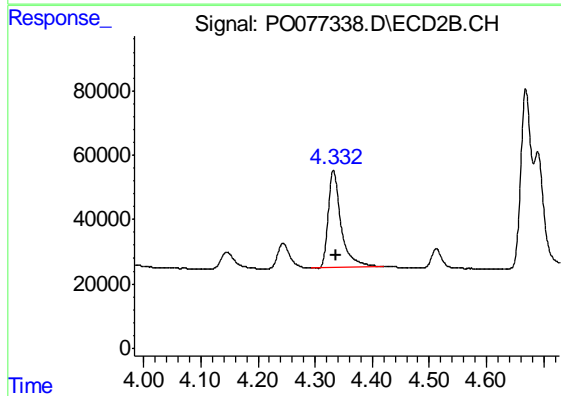
R.T.: 4.332 min
 Delta R.T.: -0.004 min
 Response: 474438
 Conc: 322.04 ng/ml



#11 AR-1232-1

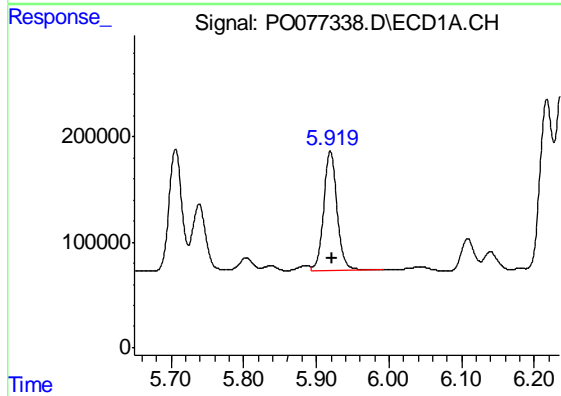
R.T.: 5.333 min
 Delta R.T.: -0.002 min
 Response: 939998
 Conc: 463.72 ng/ml

Instrument :
 ECD_O
 ClientSampleId :
 AR1660CCC500



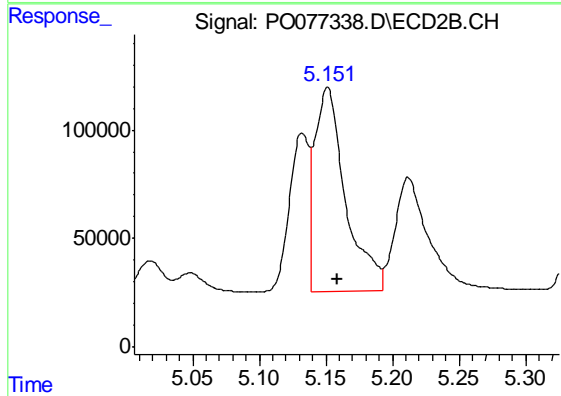
#11 AR-1232-1

R.T.: 4.332 min
 Delta R.T.: -0.005 min
 Response: 474438
 Conc: 441.05 ng/ml



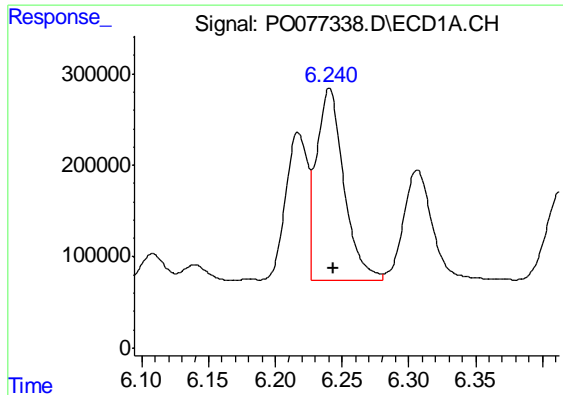
#12 AR-1232-2

R.T.: 5.919 min
 Delta R.T.: -0.003 min
 Response: 1446971
 Conc: 1300.48 ng/ml



#12 AR-1232-2

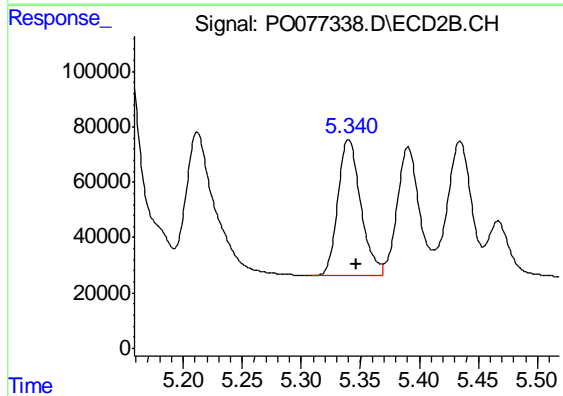
R.T.: 5.151 min
 Delta R.T.: -0.008 min
 Response: 1501708
 Conc: 1237.68 ng/ml



#13 AR-1232-3

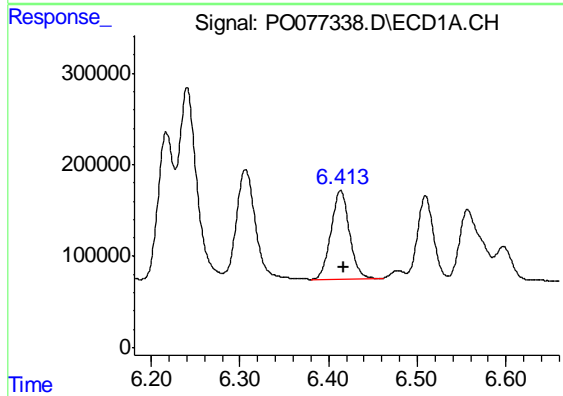
R.T.: 6.241 min
 Delta R.T.: -0.003 min
 Response: 2967094
 Conc: 1301.10 ng/ml

Instrument :
 ECD_O
 ClientSampleId :
 AR1660CCC500



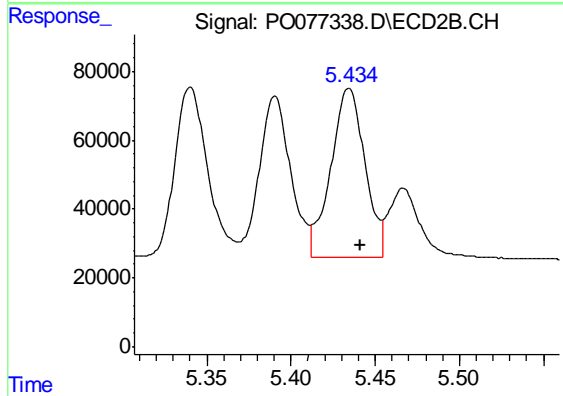
#13 AR-1232-3

R.T.: 5.340 min
 Delta R.T.: -0.007 min
 Response: 665831
 Conc: 1166.23 ng/ml



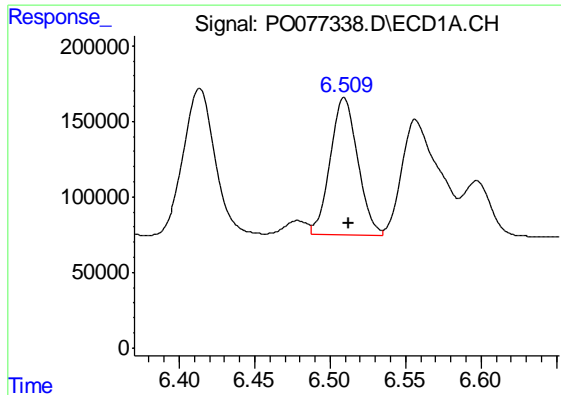
#14 AR-1232-4

R.T.: 6.414 min
 Delta R.T.: -0.003 min
 Response: 1388010
 Conc: 1348.81 ng/ml



#14 AR-1232-4

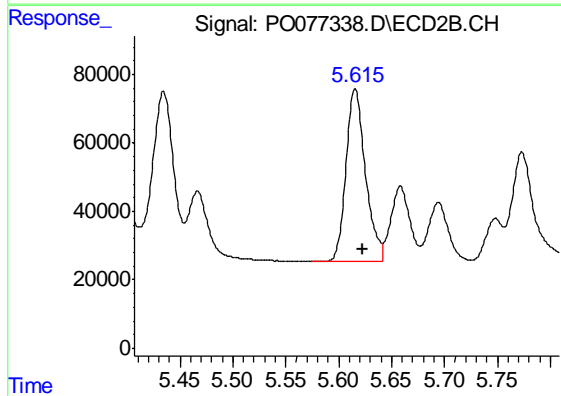
R.T.: 5.434 min
 Delta R.T.: -0.007 min
 Response: 691448
 Conc: 1212.46 ng/ml



#15 AR-1232-5

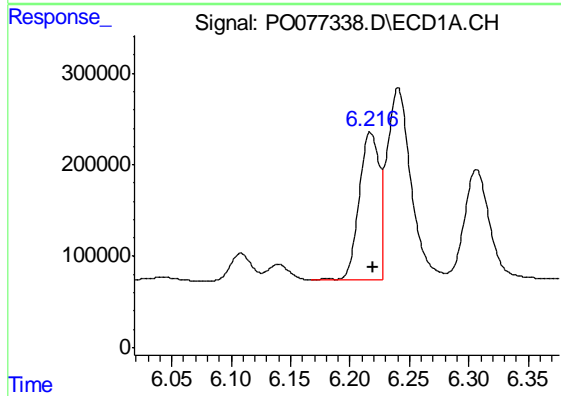
R.T.: 6.509 min
 Delta R.T.: -0.003 min
 Response: 1125703
 Conc: 1536.39 ng/ml

Instrument :
 ECD_O
 ClientSampleId :
 AR1660CCC500



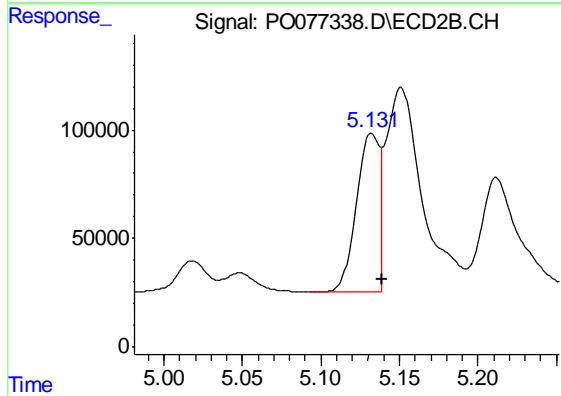
#15 AR-1232-5

R.T.: 5.616 min
 Delta R.T.: -0.007 min
 Response: 644569
 Conc: 1082.22 ng/ml



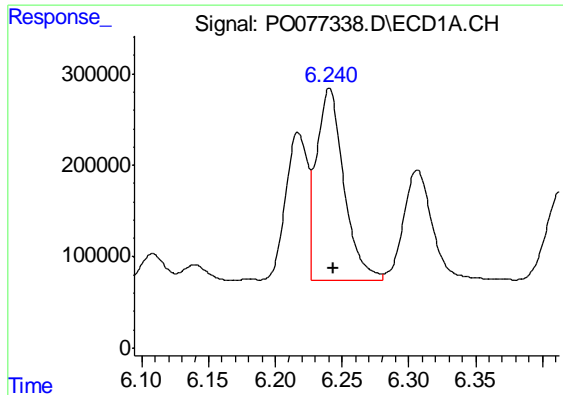
#16 AR-1242-1

R.T.: 6.217 min
 Delta R.T.: -0.003 min
 Response: 1875751
 Conc: 690.49 ng/ml



#16 AR-1242-1

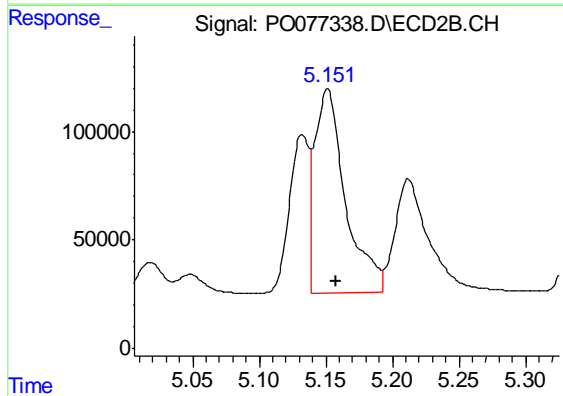
R.T.: 5.132 min
 Delta R.T.: -0.007 min
 Response: 752779
 Conc: 687.17 ng/ml



#17 AR-1242-2

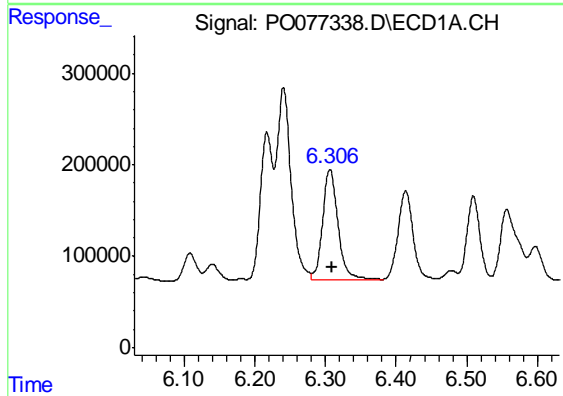
R.T.: 6.241 min
 Delta R.T.: -0.003 min
 Response: 2967094
 Conc: 672.61 ng/ml

Instrument :
 ECD_O
 ClientSampleId :
 AR1660CCC500



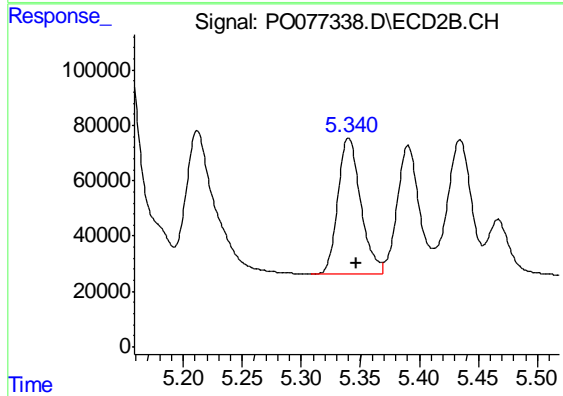
#17 AR-1242-2

R.T.: 5.151 min
 Delta R.T.: -0.006 min
 Response: 1501708
 Conc: 660.96 ng/ml



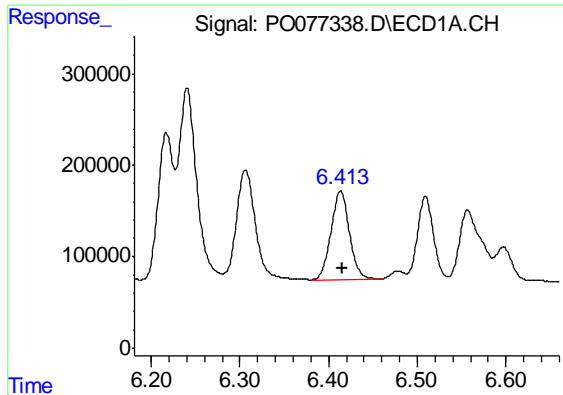
#18 AR-1242-3

R.T.: 6.306 min
 Delta R.T.: -0.003 min
 Response: 1804402
 Conc: 650.60 ng/ml



#18 AR-1242-3

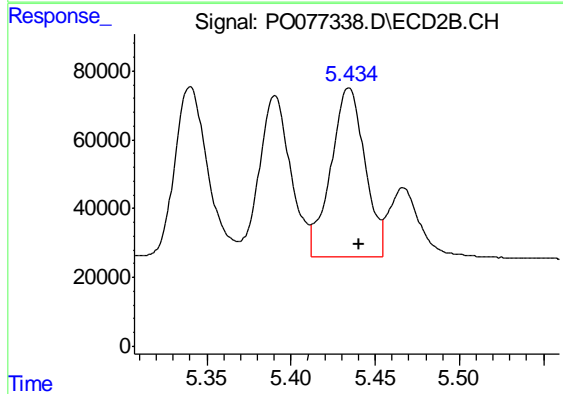
R.T.: 5.340 min
 Delta R.T.: -0.007 min
 Response: 665831
 Conc: 651.71 ng/ml



#19 AR-1242-4

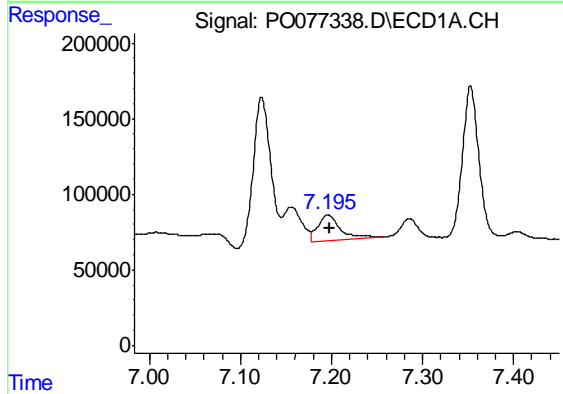
R.T.: 6.414 min
 Delta R.T.: -0.002 min
 Response: 1388010
 Conc: 646.92 ng/ml

Instrument :
 ECD_O
 ClientSampled :
 AR1660CCC500



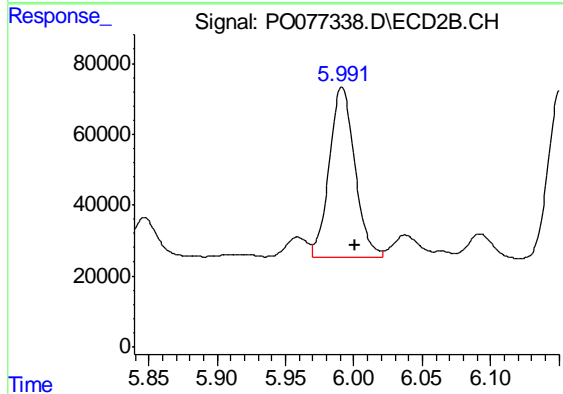
#19 AR-1242-4

R.T.: 5.434 min
 Delta R.T.: -0.006 min
 Response: 691448
 Conc: 608.62 ng/ml



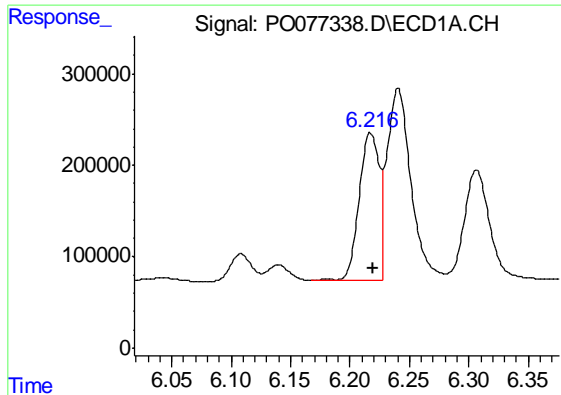
#20 AR-1242-5

R.T.: 7.196 min
 Delta R.T.: -0.002 min
 Response: 299814
 Conc: 129.66 ng/ml



#20 AR-1242-5

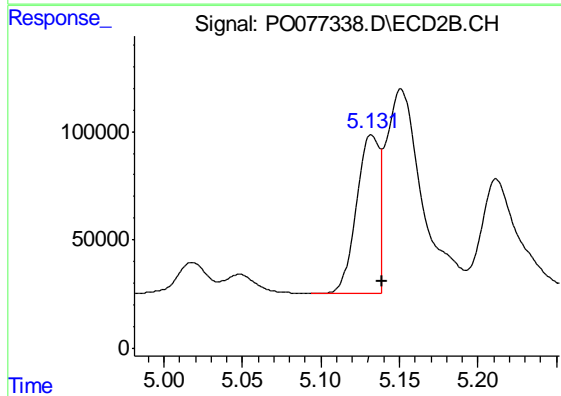
R.T.: 5.991 min
 Delta R.T.: -0.010 min
 Response: 626059
 Conc: 446.19 ng/ml



#21 AR-1248-1

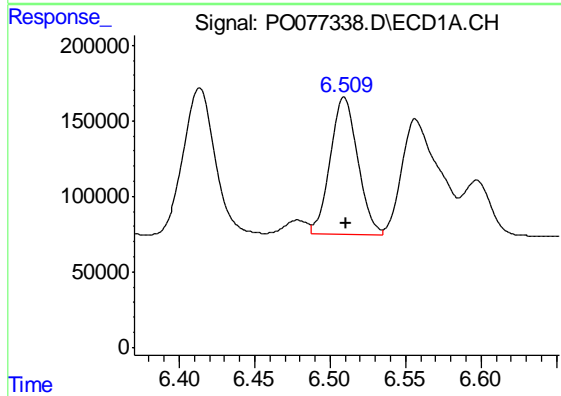
R.T.: 6.217 min
 Delta R.T.: -0.002 min
 Response: 1875751
 Conc: 897.15 ng/ml

Instrument :
 ECD_O
 ClientSampleId :
 AR1660CCC500



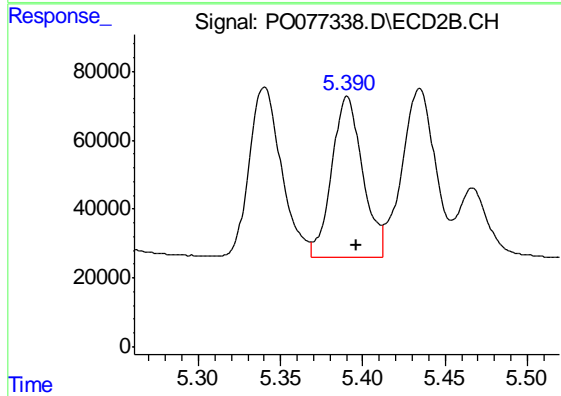
#21 AR-1248-1

R.T.: 5.132 min
 Delta R.T.: -0.007 min
 Response: 752779
 Conc: 854.34 ng/ml



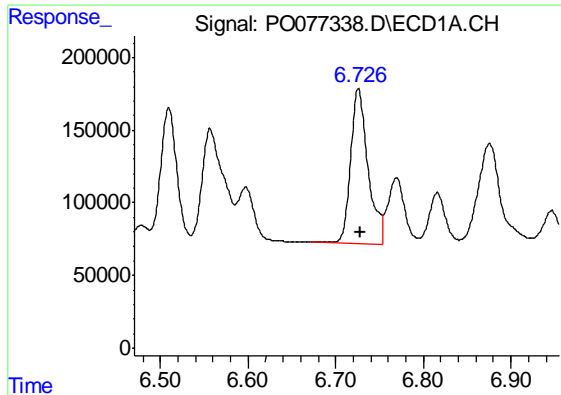
#22 AR-1248-2

R.T.: 6.509 min
 Delta R.T.: -0.001 min
 Response: 1125703
 Conc: 371.04 ng/ml



#22 AR-1248-2

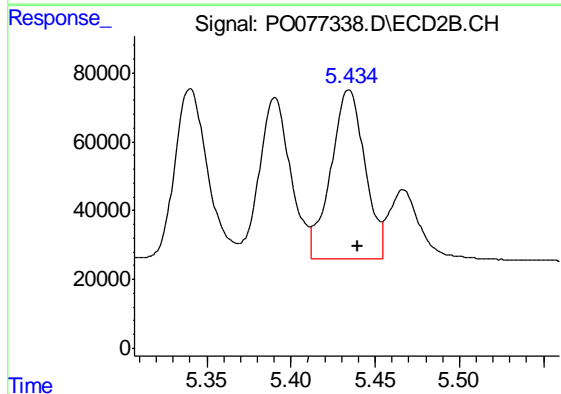
R.T.: 5.390 min
 Delta R.T.: -0.005 min
 Response: 607698
 Conc: 369.88 ng/ml



#23 AR-1248-3

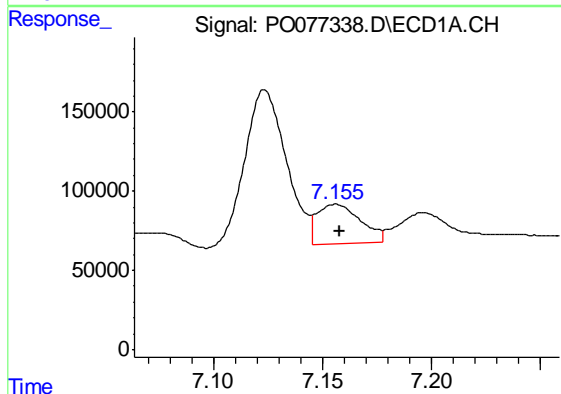
R.T.: 6.726 min
 Delta R.T.: -0.002 min
 Response: 1467069
 Conc: 418.56 ng/ml

Instrument :
 ECD_O
 ClientSampleId :
 AR1660CCC500



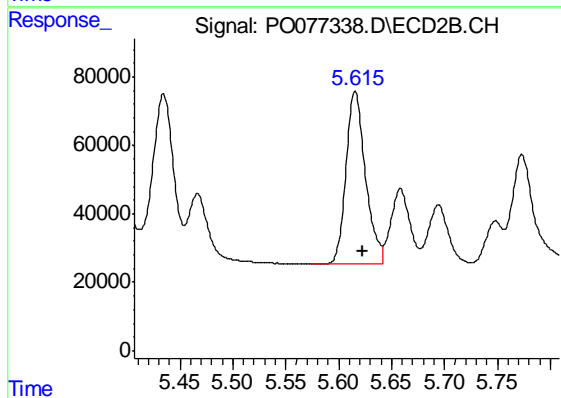
#23 AR-1248-3

R.T.: 5.434 min
 Delta R.T.: -0.005 min
 Response: 691448
 Conc: 430.35 ng/ml



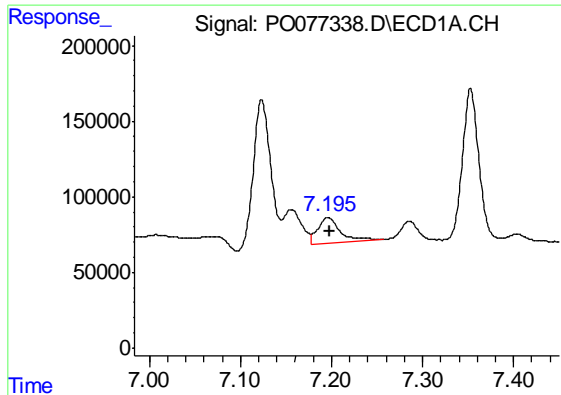
#24 AR-1248-4

R.T.: 7.156 min
 Delta R.T.: -0.002 min
 Response: 342923
 Conc: 84.85 ng/ml



#24 AR-1248-4

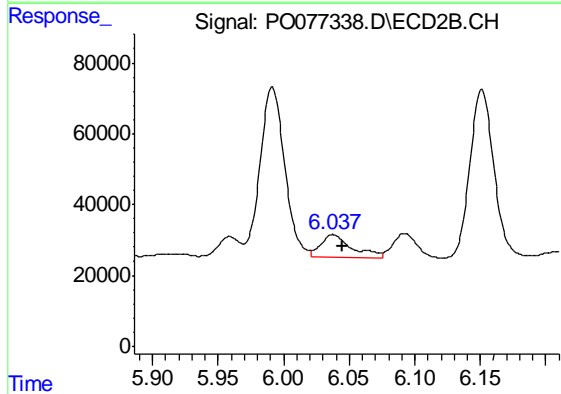
R.T.: 5.616 min
 Delta R.T.: -0.007 min
 Response: 644569
 Conc: 343.48 ng/ml



#25 AR-1248-5

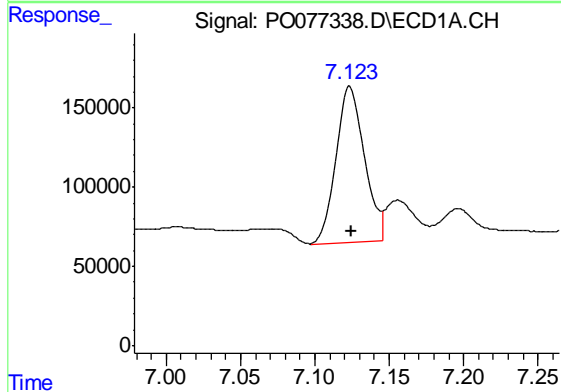
R.T.: 7.196 min
Delta R.T.: -0.001 min
Response: 299814
Conc: 73.39 ng/ml

Instrument :
ECD_O
ClientSampleId :
AR1660CCC500



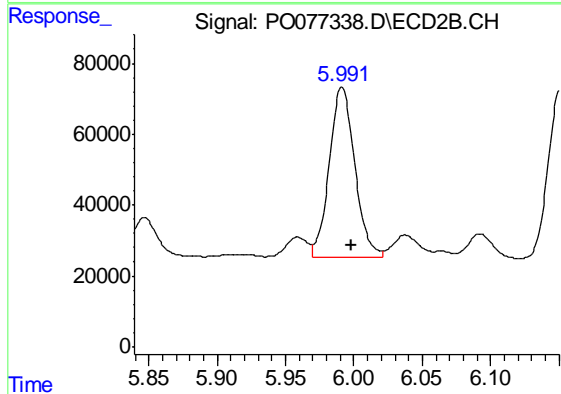
#25 AR-1248-5

R.T.: 6.037 min
Delta R.T.: -0.008 min
Response: 104986
Conc: 49.31 ng/ml



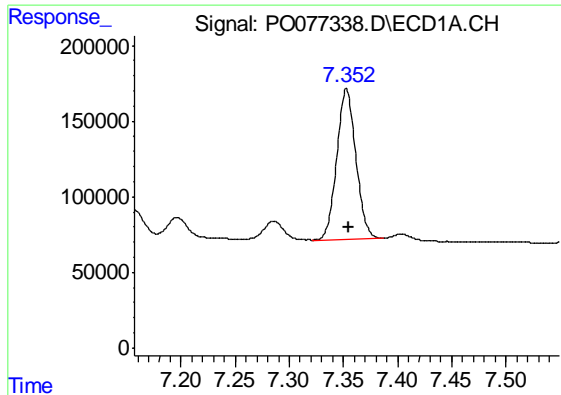
#26 AR-1254-1

R.T.: 7.123 min
Delta R.T.: -0.002 min
Response: 1310871
Conc: 318.78 ng/ml



#26 AR-1254-1

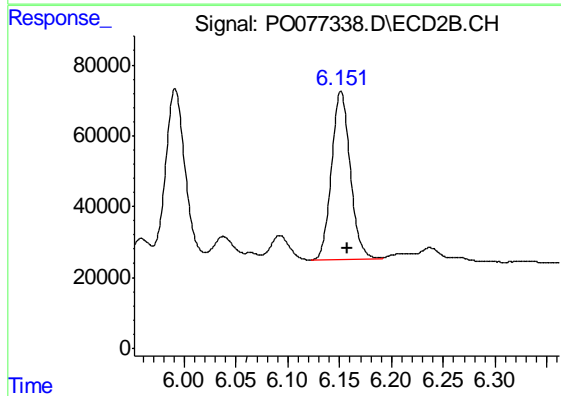
R.T.: 5.991 min
Delta R.T.: -0.007 min
Response: 626059
Conc: 216.89 ng/ml



#27 AR-1254-2

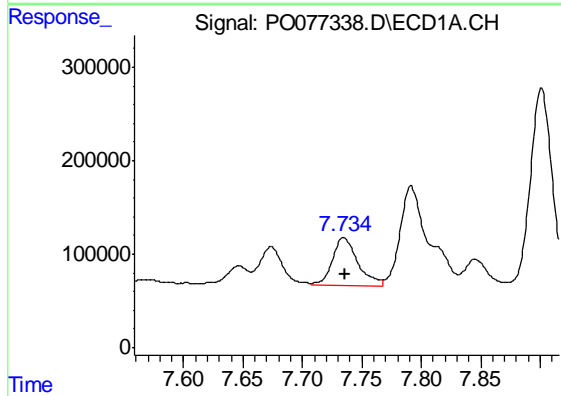
R.T.: 7.353 min
 Delta R.T.: -0.002 min
 Response: 1225185
 Conc: 189.30 ng/ml

Instrument :
 ECD_O
 ClientSampleId :
 AR1660CCC500



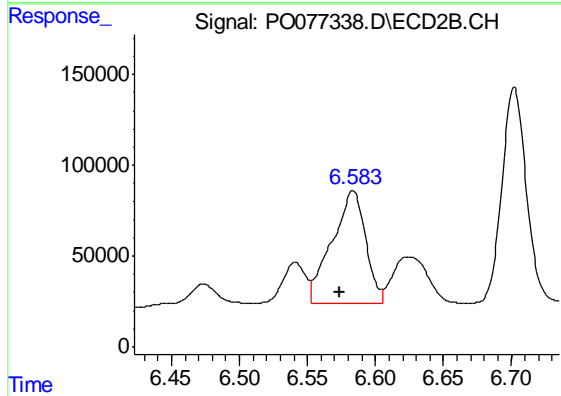
#27 AR-1254-2

R.T.: 6.151 min
 Delta R.T.: -0.007 min
 Response: 599091
 Conc: 232.05 ng/ml



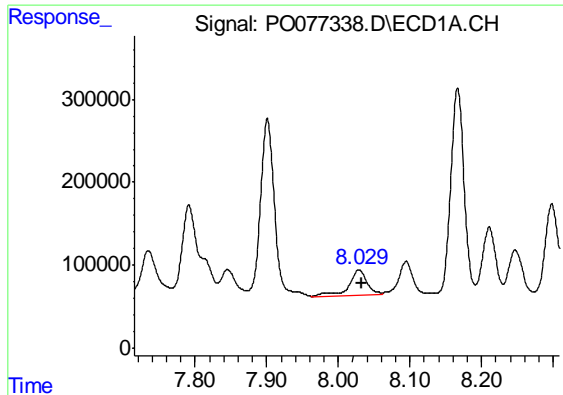
#28 AR-1254-3

R.T.: 7.735 min
 Delta R.T.: -0.001 min
 Response: 757754
 Conc: 111.98 ng/ml



#28 AR-1254-3

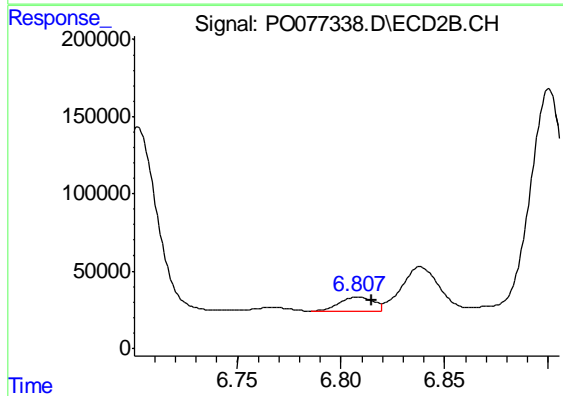
R.T.: 6.584 min
 Delta R.T.: 0.010 min
 Response: 1066457
 Conc: 272.58 ng/ml



#29 AR-1254-4

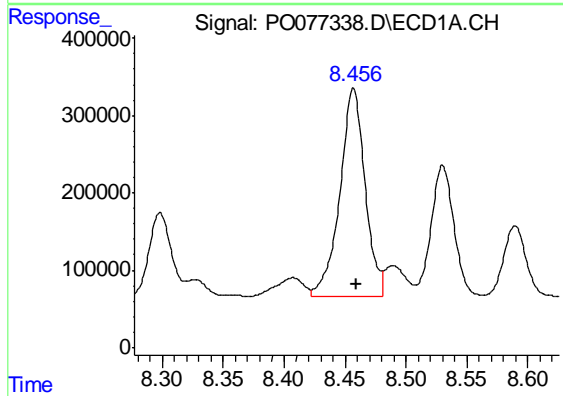
R.T.: 8.029 min
 Delta R.T.: -0.004 min
 Response: 544726
 Conc: 110.77 ng/ml

Instrument :
 ECD_O
 ClientSampleId :
 AR1660CCC500



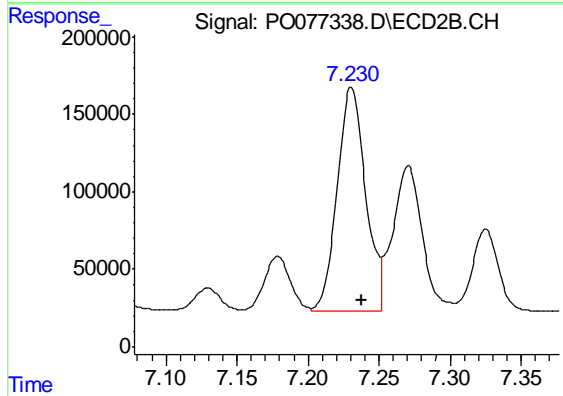
#29 AR-1254-4

R.T.: 6.808 min
 Delta R.T.: -0.007 min
 Response: 110485
 Conc: 48.63 ng/ml



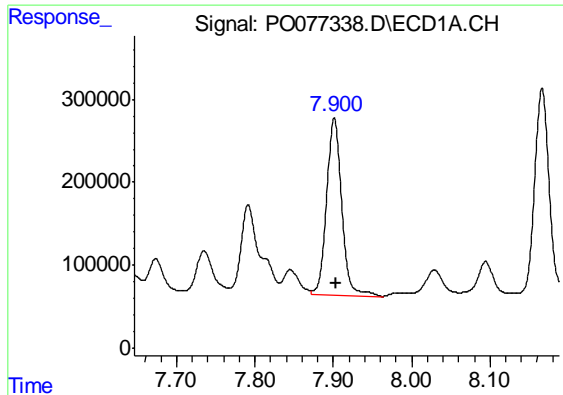
#30 AR-1254-5

R.T.: 8.457 min
 Delta R.T.: -0.003 min
 Response: 3871467
 Conc: 695.44 ng/ml



#30 AR-1254-5

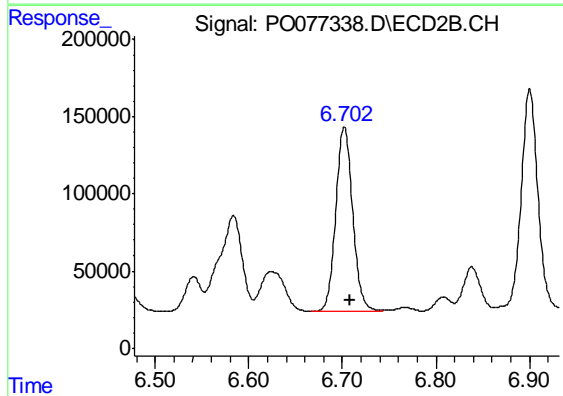
R.T.: 7.231 min
 Delta R.T.: -0.007 min
 Response: 2015932
 Conc: 556.00 ng/ml



#31 AR-1260-1

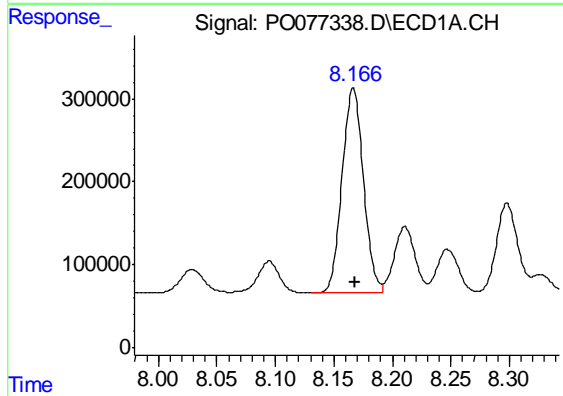
R.T.: 7.901 min
 Delta R.T.: -0.002 min
 Response: 2863505
 Conc: 529.23 ng/ml

Instrument :
 ECD_O
 ClientSampleId :
 AR1660CCC500



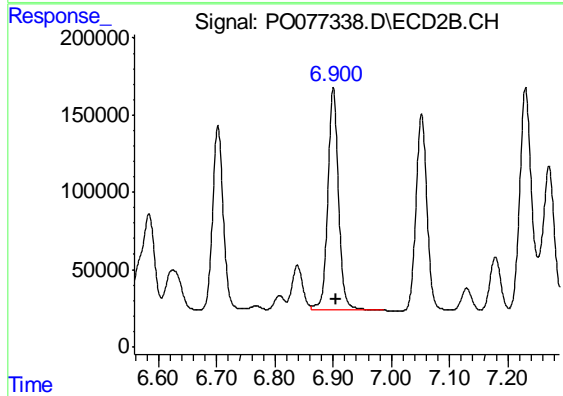
#31 AR-1260-1

R.T.: 6.702 min
 Delta R.T.: -0.006 min
 Response: 1501252
 Conc: 502.88 ng/ml



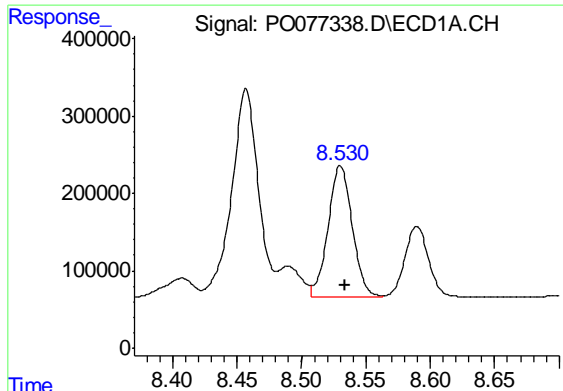
#32 AR-1260-2

R.T.: 8.167 min
 Delta R.T.: -0.001 min
 Response: 3154178
 Conc: 499.52 ng/ml



#32 AR-1260-2

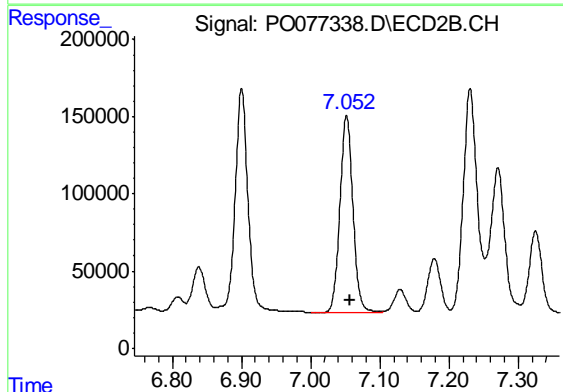
R.T.: 6.900 min
 Delta R.T.: -0.006 min
 Response: 1832380
 Conc: 513.99 ng/ml



#33 AR-1260-3

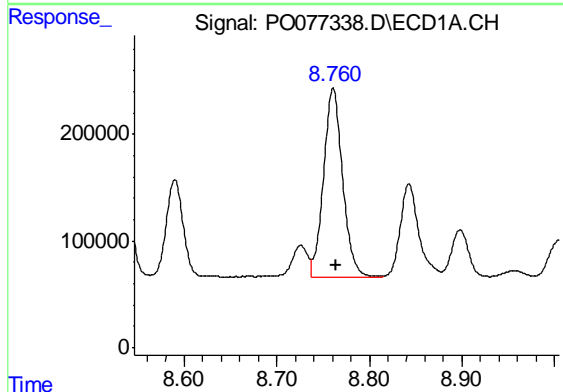
R.T.: 8.530 min
Delta R.T.: -0.004 min
Response: 2196676
Conc: 538.16 ng/ml

Instrument :
ECD_O
ClientSampleId :
AR1660CCC500



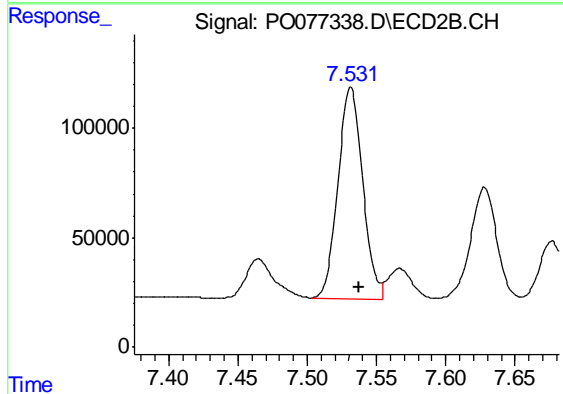
#33 AR-1260-3

R.T.: 7.052 min
Delta R.T.: -0.005 min
Response: 1659624
Conc: 504.70 ng/ml



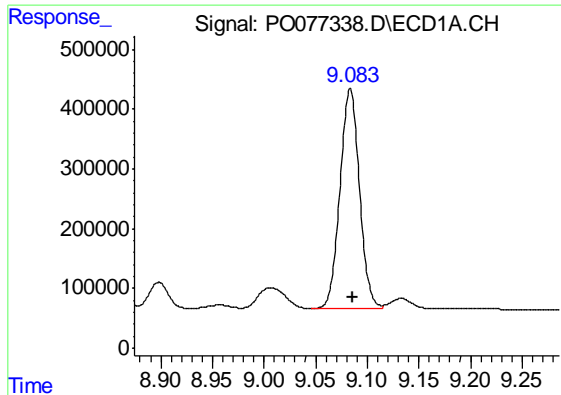
#34 AR-1260-4

R.T.: 8.761 min
Delta R.T.: -0.003 min
Response: 2518971
Conc: 520.71 ng/ml



#34 AR-1260-4

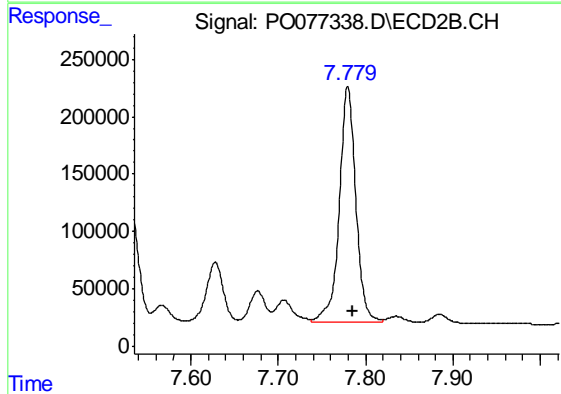
R.T.: 7.531 min
Delta R.T.: -0.006 min
Response: 1202996
Conc: 510.76 ng/ml



#35 AR-1260-5

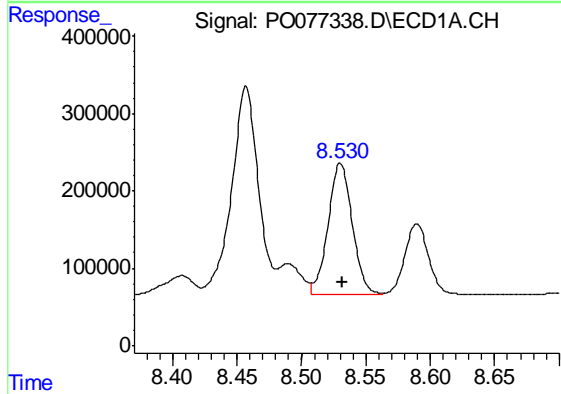
R.T.: 9.084 min
 Delta R.T.: -0.002 min
 Response: 4896421
 Conc: 526.55 ng/ml

Instrument :
 ECD_O
 ClientSampled :
 AR1660CCC500



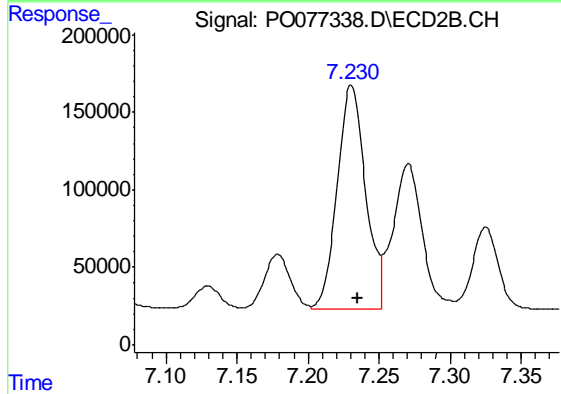
#35 AR-1260-5

R.T.: 7.780 min
 Delta R.T.: -0.006 min
 Response: 2710365
 Conc: 504.90 ng/ml



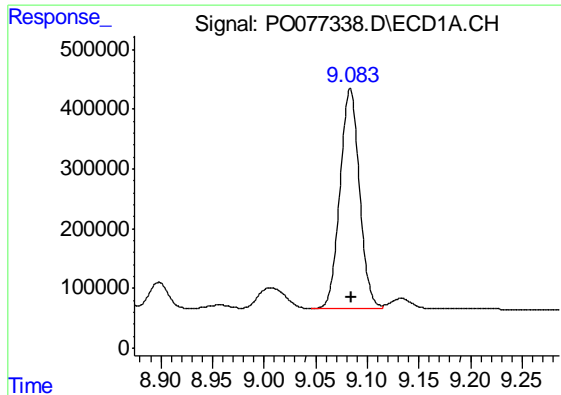
#36 AR-1262-1

R.T.: 8.530 min
 Delta R.T.: -0.002 min
 Response: 2196676
 Conc: 327.19 ng/ml



#36 AR-1262-1

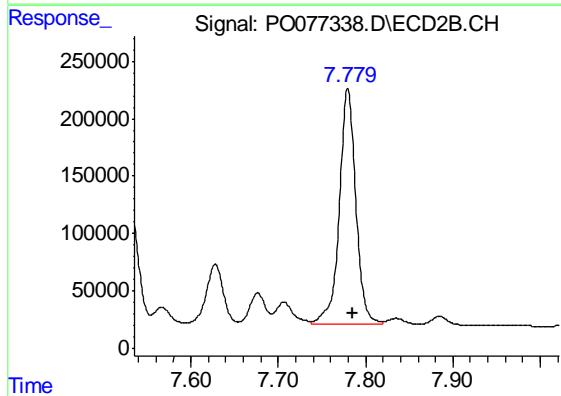
R.T.: 7.231 min
 Delta R.T.: -0.005 min
 Response: 2015932
 Conc: 1079.51 ng/ml



#37 AR-1262-2

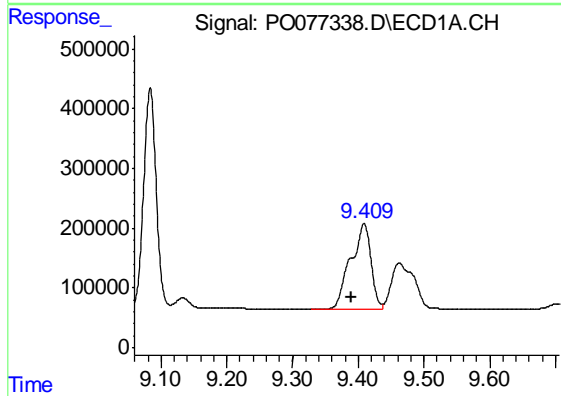
R.T.: 9.084 min
 Delta R.T.: -0.001 min
 Response: 4896421
 Conc: 421.51 ng/ml

Instrument :
 ECD_O
 ClientSampleId :
 AR1660CCC500



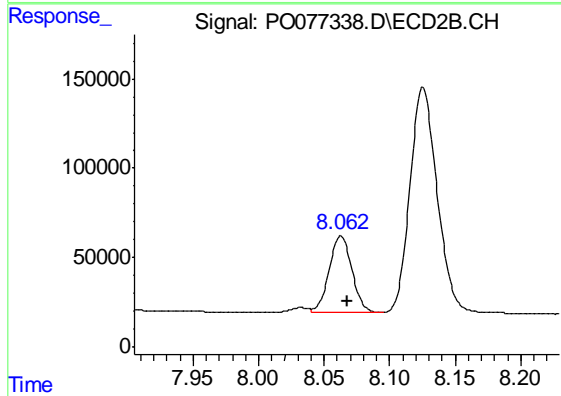
#37 AR-1262-2

R.T.: 7.780 min
 Delta R.T.: -0.006 min
 Response: 2710365
 Conc: 436.66 ng/ml



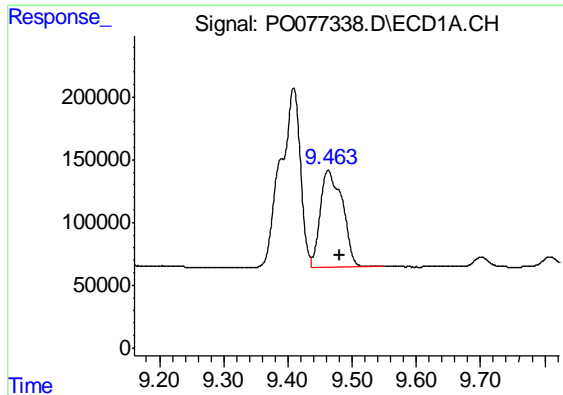
#38 AR-1262-3

R.T.: 9.409 min
 Delta R.T.: 0.020 min
 Response: 3081649
 Conc: 400.13 ng/ml



#38 AR-1262-3

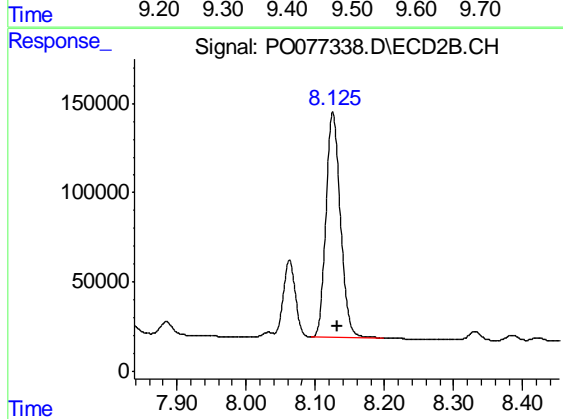
R.T.: 8.063 min
 Delta R.T.: -0.006 min
 Response: 523170
 Conc: 216.43 ng/ml



#39 AR-1262-4

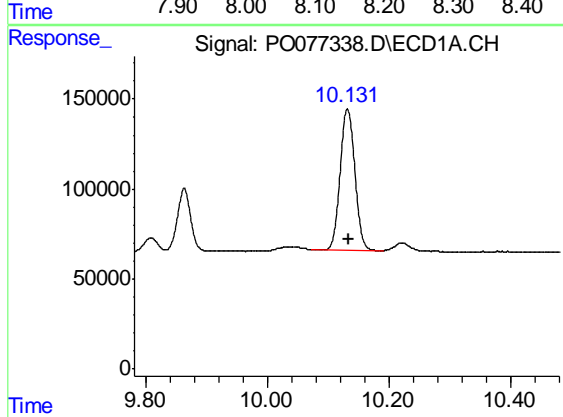
R.T.: 9.463 min
Delta R.T.: -0.018 min
Response: 1842509
Conc: 306.58 ng/ml

Instrument :
ECD_O
ClientSampleId :
AR1660CCC500



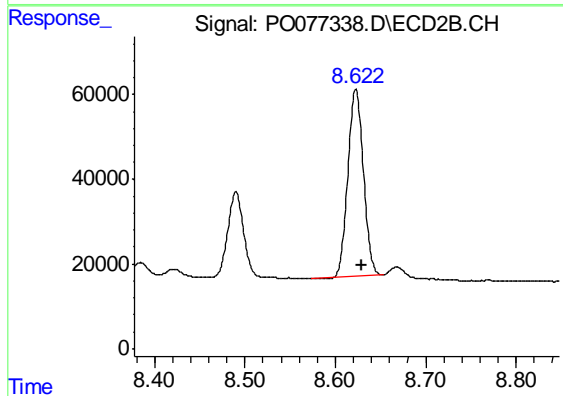
#39 AR-1262-4

R.T.: 8.125 min
Delta R.T.: -0.007 min
Response: 1830450
Conc: 409.49 ng/ml



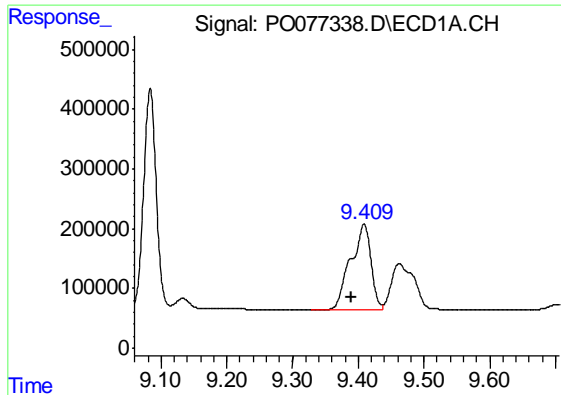
#40 AR-1262-5

R.T.: 10.132 min
Delta R.T.: -0.002 min
Response: 1326403
Conc: 313.93 ng/ml



#40 AR-1262-5

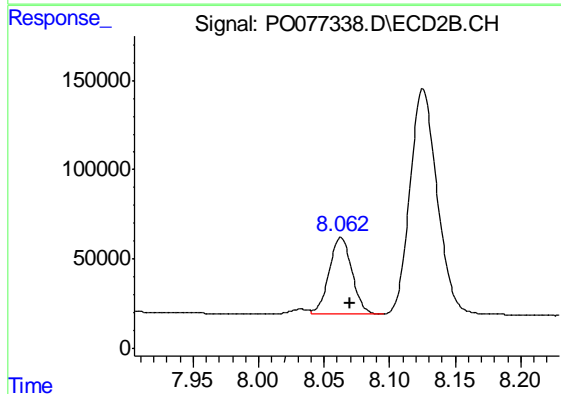
R.T.: 8.623 min
Delta R.T.: -0.006 min
Response: 523688
Conc: 284.60 ng/ml



#41 AR-1268-1

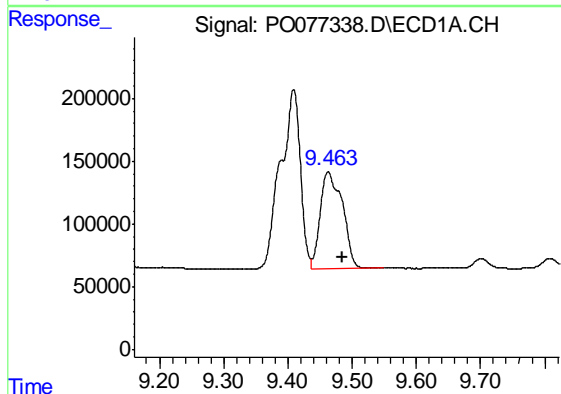
R.T.: 9.409 min
Delta R.T.: 0.019 min
Response: 3081649
Conc: 216.54 ng/ml

Instrument :
ECD_O
ClientSampleId :
AR1660CCC500



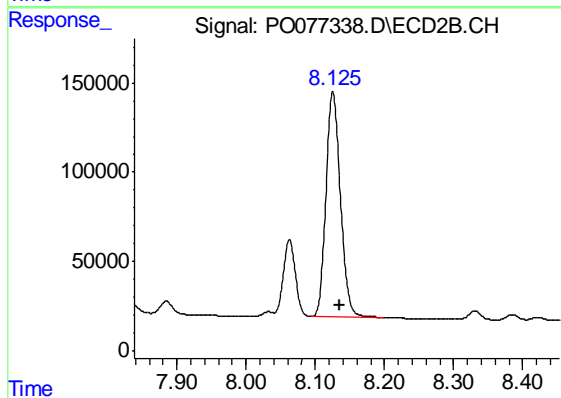
#41 AR-1268-1

R.T.: 8.063 min
Delta R.T.: -0.007 min
Response: 523170
Conc: 74.20 ng/ml



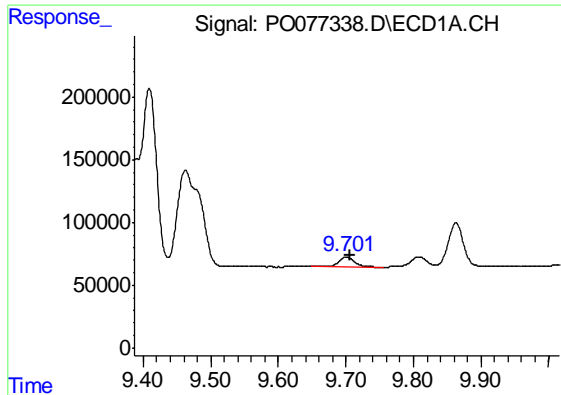
#42 AR-1268-2

R.T.: 9.463 min
Delta R.T.: -0.022 min
Response: 1842509
Conc: 139.73 ng/ml



#42 AR-1268-2

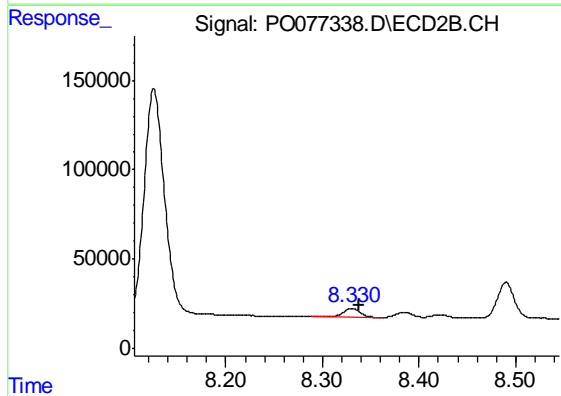
R.T.: 8.125 min
Delta R.T.: -0.010 min
Response: 1830450
Conc: 284.97 ng/ml



#43 AR-1268-3

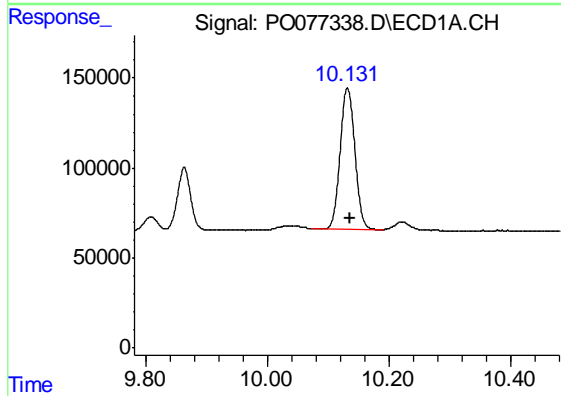
R.T.: 9.701 min
 Delta R.T.: -0.005 min
 Response: 134313
 Conc: 11.76 ng/ml

Instrument :
 ECD_O
 ClientSampleId :
 AR1660CCC500



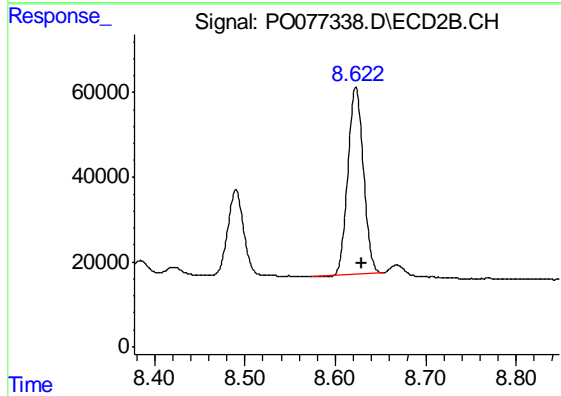
#43 AR-1268-3

R.T.: 8.330 min
 Delta R.T.: -0.008 min
 Response: 57116
 Conc: 10.77 ng/ml



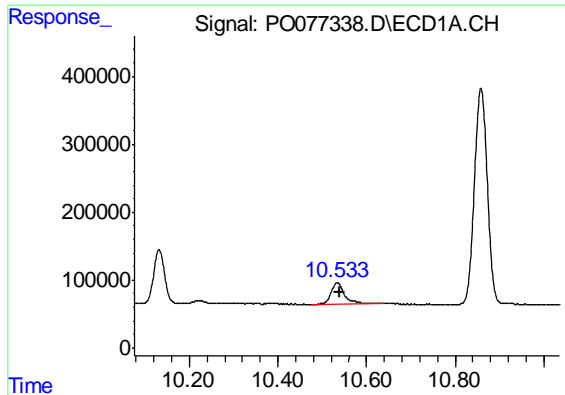
#44 AR-1268-4

R.T.: 10.132 min
 Delta R.T.: -0.005 min
 Response: 1326403
 Conc: 273.16 ng/ml



#44 AR-1268-4

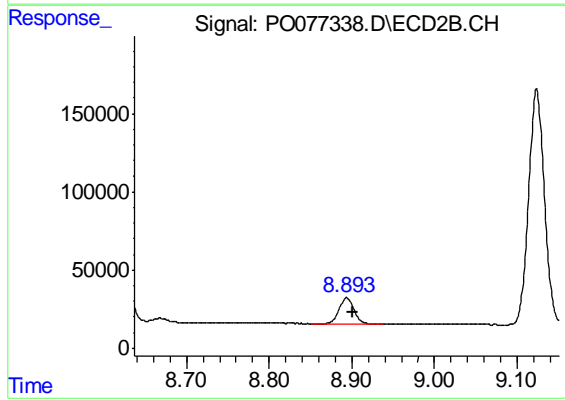
R.T.: 8.623 min
 Delta R.T.: -0.007 min
 Response: 523688
 Conc: 247.34 ng/ml



#45 AR-1268-5

R.T.: 10.534 min
Delta R.T.: -0.005 min
Response: 653416
Conc: 16.86 ng/ml

Instrument :
ECD_O
ClientSampleId :
AR1660CCC500



#45 AR-1268-5

R.T.: 8.894 min
Delta R.T.: -0.008 min
Response: 204546
Conc: 14.58 ng/ml