

Data Path : Z:\pestpcbsrv\HPCHEM1\ECD_0\Data\P0042623\
 Data File : P0094564.D
 Signal(s) : Signal #1: ECD1A.ch Signal #2: ECD2B.ch
 Acq On : 26 Apr 2023 19:20
 Operator : YP/AJ
 Sample : AR1248ICC750
 Misc :
 ALS Vial : 16 Sample Multiplier: 1

Instrument :
 ECD_0
ClientSampleId :
 AR1248ICC750

Integration File signal 1: autoint1.e
 Integration File signal 2: autoint2.e
 Quant Time: Apr 27 02:05:56 2023
 Quant Method : Z:\pestpcbsrv\HPCHEM1\ECD_0\methods\P0042623.M
 Quant Title : GC EXTRACTABLES
 QLast Update : Thu Apr 27 02:01:00 2023
 Response via : Initial Calibration
 Integrator: ChemStation

Volume Inj. : 2 µl
 Signal #1 Phase : ZB-MR1 Signal #2 Phase: ZB-MR2
 Signal #1 Info : 30Mx0.32mmx 0.50µ Signal #2 Info : 30M x 0.32mm x 0.25µm

Compound	RT#1	RT#2	Resp#1	Resp#2	ng/ml	ng/ml

System Monitoring Compounds						
1) SA Tetrachlo...	4.417	3.619	251.9E6	97494107	75.178	74.655
2) SA Decachlor...	10.253	8.633	173.6E6	79555226	74.422	74.392
Target Compounds						
21) L5 AR-1248-1	5.595	4.701	45141677	18276215	750.453	740.219
22) L5 AR-1248-2	5.871	4.938	74532460	29273742	746.477	743.174
23) L5 AR-1248-3	6.077	4.979	80356716	30459647	751.738	742.527
24) L5 AR-1248-4	6.485	5.151	75128991	34883384	754.244	742.963
25) L5 AR-1248-5	6.525	5.543	79533452	29197918	754.723	747.709

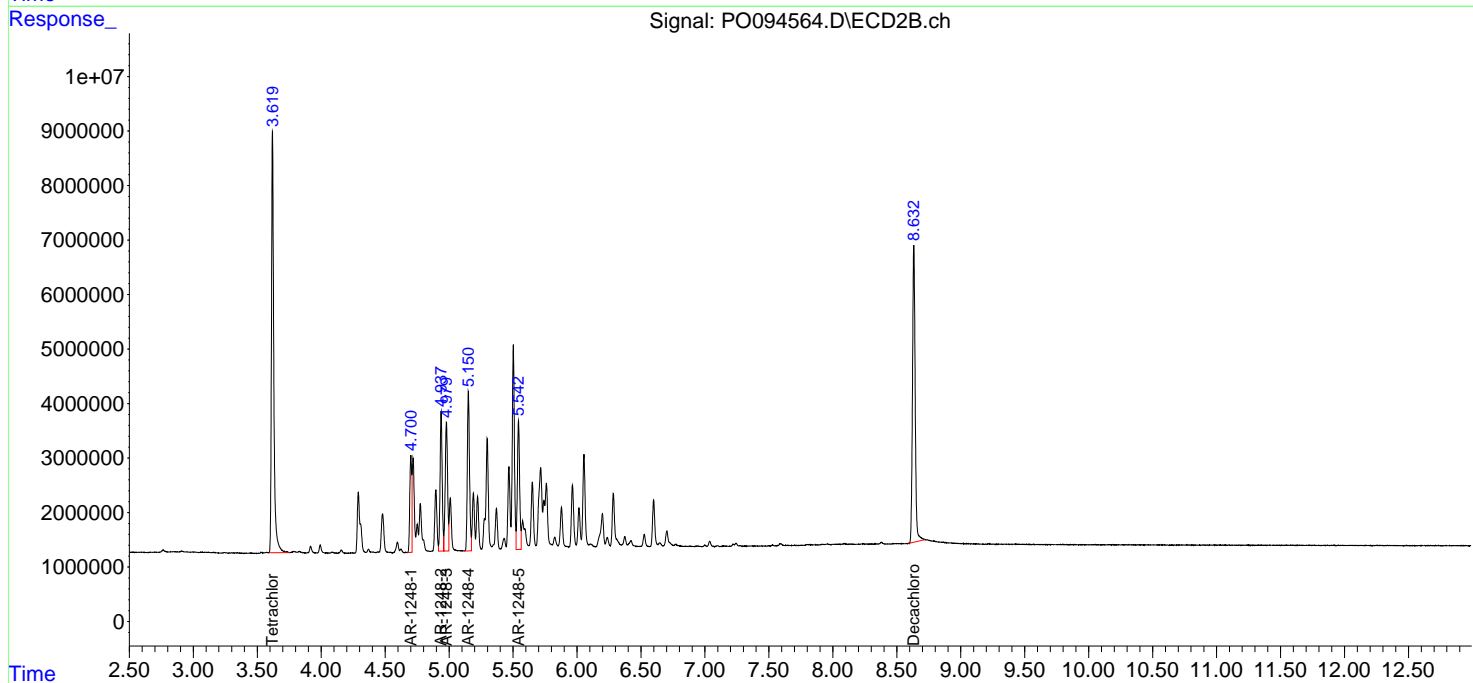
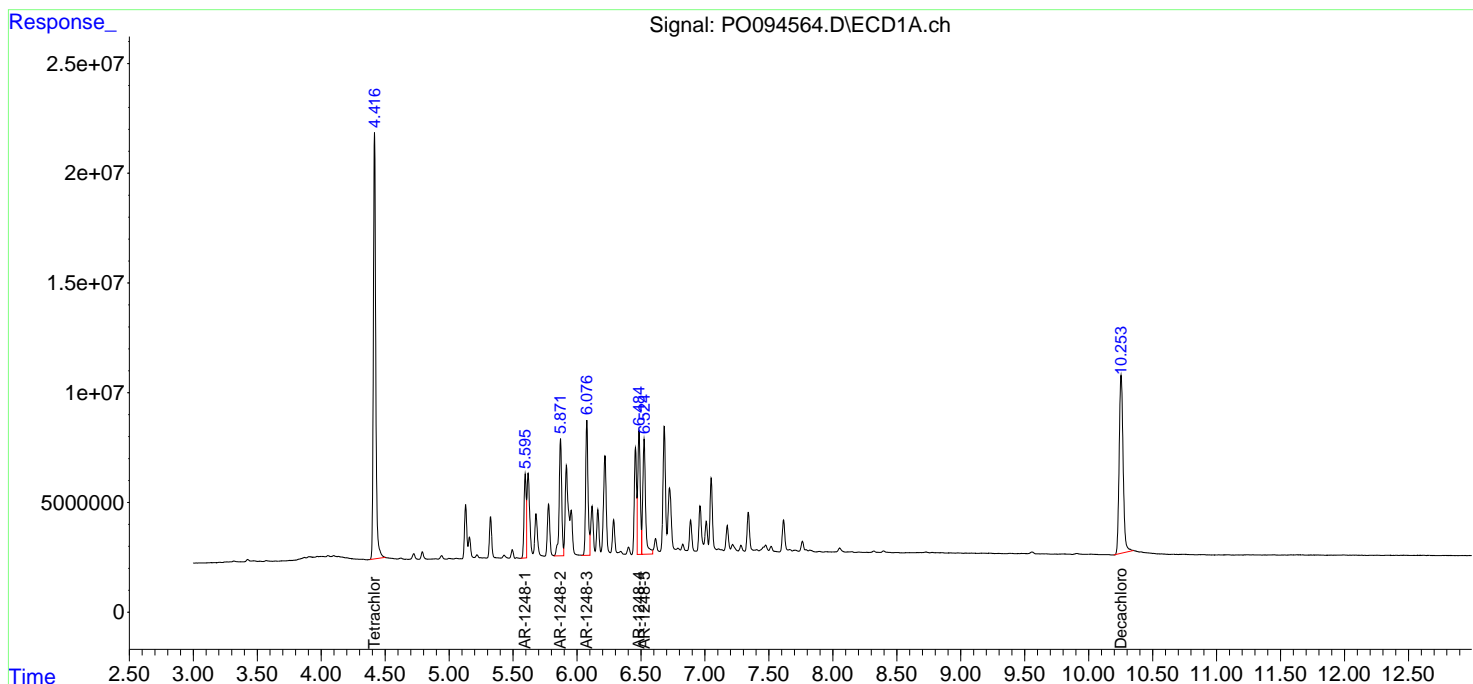
(f)=RT Delta > 1/2 Window (#)=Amounts differ by > 25% (m)=manual int.

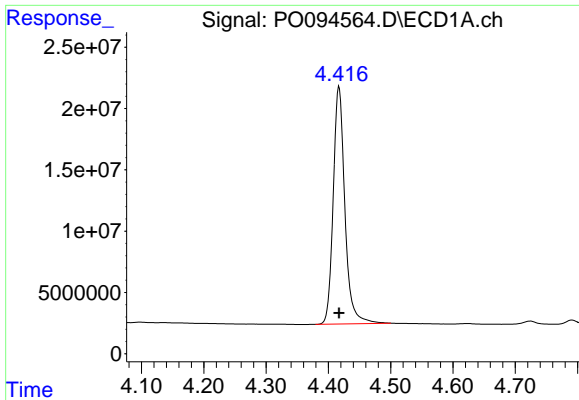
Data Path : Z:\pestpcbsrv\HPCHEM1\ECD_O\Data\P0042623\
 Data File : P0094564.D
 Signal(s) : Signal #1: ECD1A.ch Signal #2: ECD2B.ch
 Acq On : 26 Apr 2023 19:20
 Operator : YP/AJ
 Sample : AR1248ICC750
 Misc :
 ALS Vial : 16 Sample Multiplier: 1

Instrument :
 ECD_O
 ClientSampleId :
 AR1248ICC750

Integration File signal 1: autoint1.e
 Integration File signal 2: autoint2.e
 Quant Time: Apr 27 02:05:56 2023
 Quant Method : Z:\pestpcbsrv\HPCHEM1\ECD_O\methods\P0042623.M
 Quant Title : GC EXTRACTABLES
 QLast Update : Thu Apr 27 02:01:00 2023
 Response via : Initial Calibration
 Integrator: ChemStation

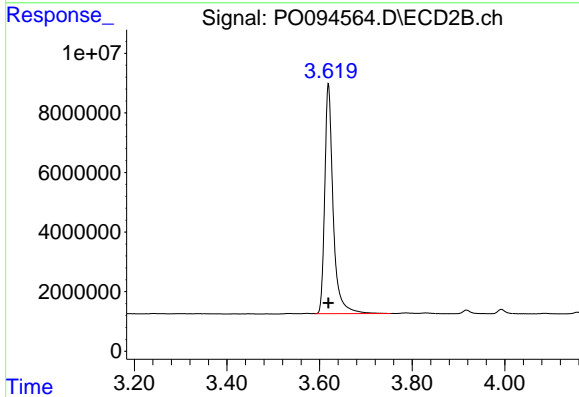
Volume Inj. : 2 µl
 Signal #1 Phase : ZB-MR1 Signal #2 Phase: ZB-MR2
 Signal #1 Info : 30Mx0.32mmx 0.50µ Signal #2 Info : 30M x 0.32mm x 0.25µm



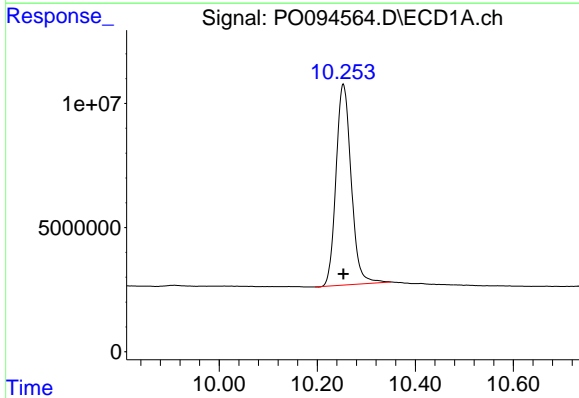


#1 Tetrachloro-m-xylene
 R.T.: 4.417 min
 Delta R.T.: 0.000 min
 Response: 251855056
 Conc: 75.18 ng/ml

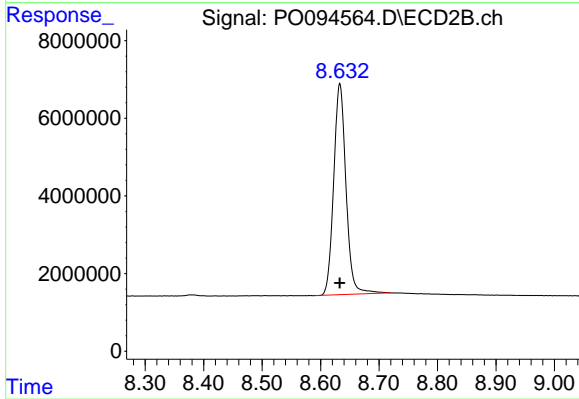
Instrument :
 ECD_O
 ClientSampleId :
 AR1248ICC750



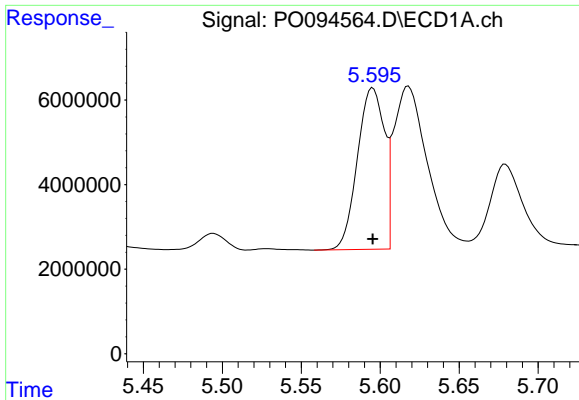
#1 Tetrachloro-m-xylene
 R.T.: 3.619 min
 Delta R.T.: 0.000 min
 Response: 97494107
 Conc: 74.66 ng/ml



#2 Decachlorobiphenyl
 R.T.: 10.253 min
 Delta R.T.: 0.000 min
 Response: 173634430
 Conc: 74.42 ng/ml



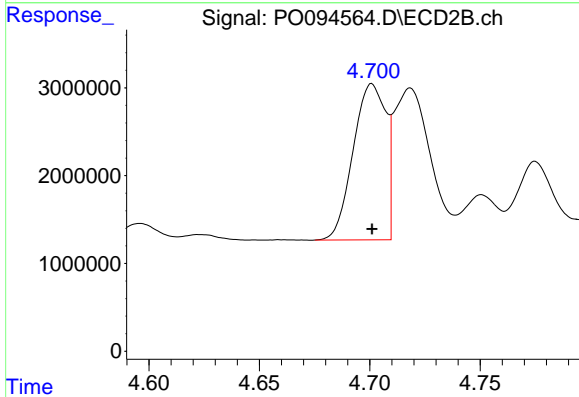
#2 Decachlorobiphenyl
 R.T.: 8.633 min
 Delta R.T.: 0.000 min
 Response: 79555226
 Conc: 74.39 ng/ml



#21 AR-1248-1

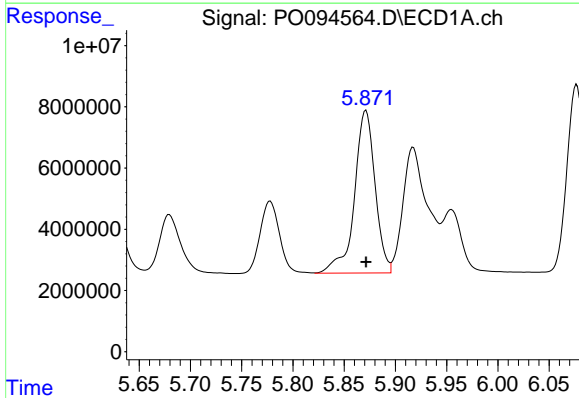
R.T.: 5.595 min
 Delta R.T.: 0.000 min
 Response: 45141677
 Conc: 750.45 ng/ml

Instrument :
 ECD_O
 ClientSampleId :
 AR1248ICC750



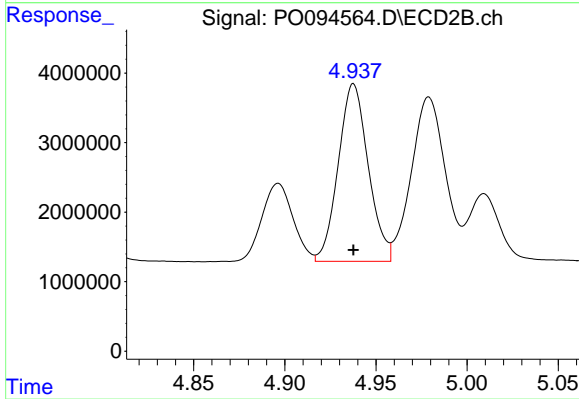
#21 AR-1248-1

R.T.: 4.701 min
 Delta R.T.: 0.000 min
 Response: 18276215
 Conc: 740.22 ng/ml



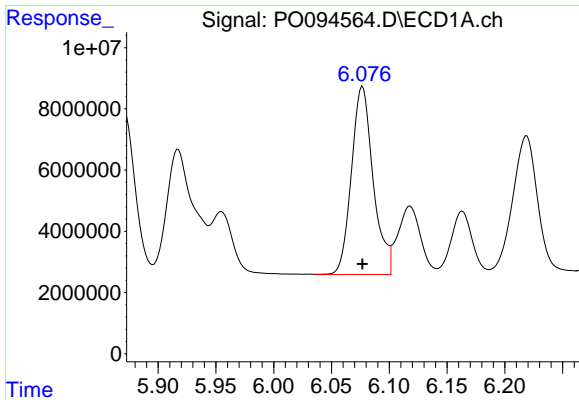
#22 AR-1248-2

R.T.: 5.871 min
 Delta R.T.: 0.000 min
 Response: 74532460
 Conc: 746.48 ng/ml



#22 AR-1248-2

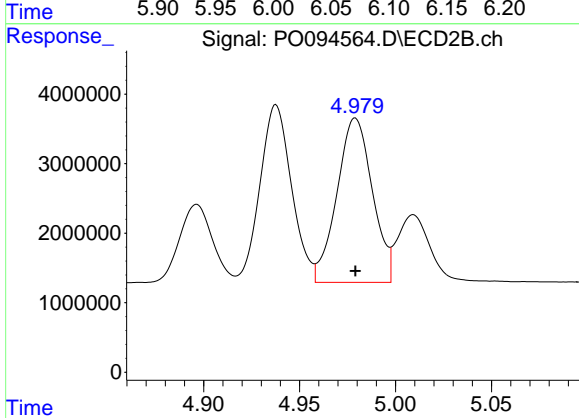
R.T.: 4.938 min
 Delta R.T.: 0.000 min
 Response: 29273742
 Conc: 743.17 ng/ml



#23 AR-1248-3

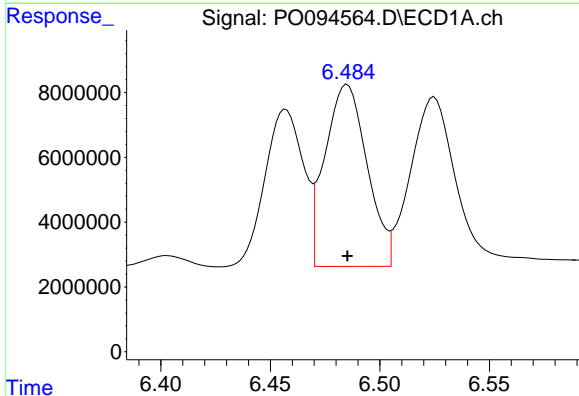
R.T.: 6.077 min
 Delta R.T.: 0.000 min
 Response: 80356716
 Conc: 751.74 ng/ml

Instrument :
 ECD_O
 ClientSampleId :
 AR1248ICC750



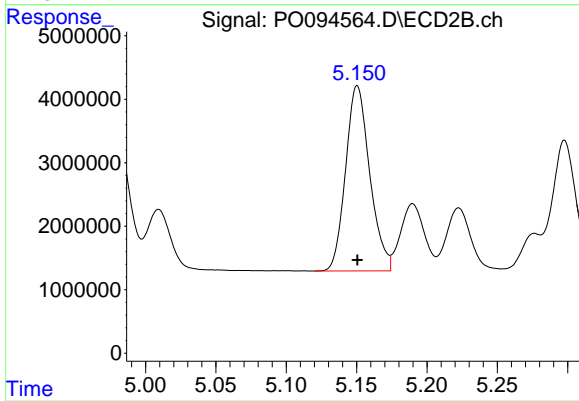
#23 AR-1248-3

R.T.: 4.979 min
 Delta R.T.: 0.000 min
 Response: 30459647
 Conc: 742.53 ng/ml



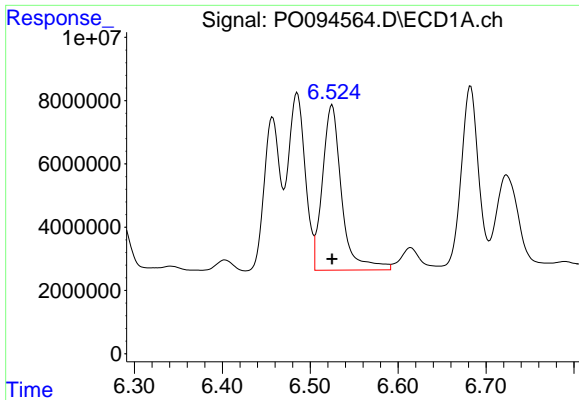
#24 AR-1248-4

R.T.: 6.485 min
 Delta R.T.: 0.000 min
 Response: 75128991
 Conc: 754.24 ng/ml



#24 AR-1248-4

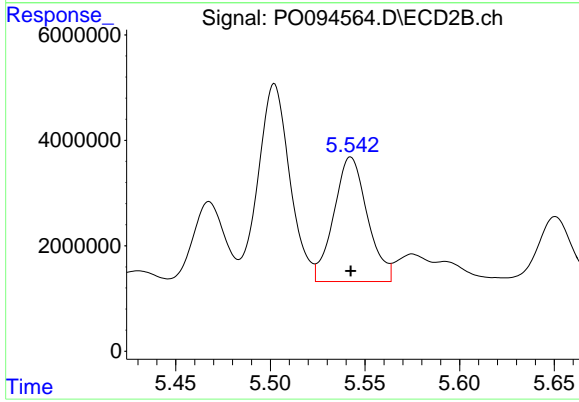
R.T.: 5.151 min
 Delta R.T.: 0.000 min
 Response: 34883384
 Conc: 742.96 ng/ml



#25 AR-1248-5

R.T.: 6.525 min
Delta R.T.: 0.000 min
Response: 79533452
Conc: 754.72 ng/ml

Instrument :
ECD_O
ClientSampleId :
AR1248ICC750



#25 AR-1248-5

R.T.: 5.543 min
Delta R.T.: 0.000 min
Response: 29197918
Conc: 747.71 ng/ml