

Data Path : Z:\pestpcbsrv\HPCHEM1\ECD\_0\Data\P0042723\  
 Data File : P0094604.D  
 Signal(s) : Signal #1: ECD1A.ch Signal #2: ECD2B.ch  
 Acq On : 27 Apr 2023 10:17  
 Operator : YP/AJ  
 Sample : AR1248CCC500  
 Misc :  
 ALS Vial : 5 Sample Multiplier: 1

Instrument :  
 ECD\_0  
 ClientSampleId :

Integration File signal 1: autoint1.e  
 Integration File signal 2: autoint2.e  
 Quant Time: Apr 27 15:24:05 2023  
 Quant Method : Z:\pestpcbsrv\HPCHEM1\ECD\_0\methods\P0042623.M  
 Quant Title : GC EXTRACTABLES  
 QLast Update : Thu Apr 27 03:04:50 2023  
 Response via : Initial Calibration  
 Integrator: ChemStation

Volume Inj. : 2 µl  
 Signal #1 Phase : ZB-MR2 Signal #2 Phase: ZB-MR2  
 Signal #1 Info : 30Mx0.32mmx 0.50µ Signal #2 Info : 30M x 0.32mm x 0.25µm

Compound	RT#1	RT#2	Resp#1	Resp#2	ng/ml	ng/ml
System Monitoring Compounds						
1) SA Tetrachlo...	4.417	3.619	168.2E6	66957180	48.844	50.040
2) SA Decachlor...	10.255	8.633	120.1E6	56822809	49.484	50.483
Target Compounds						
3) L1 AR-1016-1	5.594	4.700	30302660	12995582	297.470	327.661
4) L1 AR-1016-2	5.617	4.718	39432234	13865651	260.612	234.549
5) L1 AR-1016-3	5.680	4.895	20265324	9285407	204.402	295.792 #
6) L1 AR-1016-4	5.778	4.937	21458729	20605100	288.302	712.576 #
7) L1 AR-1016-5	6.077	5.149	55177584	25806178	661.342	705.117
8) L2 AR-1221-1	4.625	0.000	562098	0	12.672	N.D. #
9) L2 AR-1221-2	4.724	3.917	2476666	964200	76.119	75.749
10) L2 AR-1221-3	4.791	3.992	3053363	1226751	30.540	31.090
11) L3 AR-1232-1	4.791	3.992	3053363	1226751	36.101	36.046
12) L3 AR-1232-2	5.324	4.718	15882056	13865651	370.384	476.390 #
13) L3 AR-1232-3	5.617	4.895	39432234	9285407	542.836	625.815
14) L3 AR-1232-4	5.778	4.978	21458729	21662767	611.088	1393.664 #
15) L3 AR-1232-5	5.871	5.149	51664716	25806178	1566.948	1513.965
16) L4 AR-1242-1	5.594	4.700	30302660	12995582	362.746	392.402
17) L4 AR-1242-2	5.617	4.718	39432234	13865651	313.658	281.283
18) L4 AR-1242-3	5.680	4.895	20265324	9285407	248.855	356.872 #
19) L4 AR-1242-4	5.778	4.978	21458729	21662767	349.407	731.824 #
20) L4 AR-1242-5	6.524	5.501	54639060	31102904	849.048	984.424
21) L5 AR-1248-1	5.594	4.700	30302660	12995582	484.884	509.543
22) L5 AR-1248-2	5.871	4.937	51664716	20605100	493.768	497.530
23) L5 AR-1248-3	6.077	4.978	55177584	21662767	498.334	504.928
24) L5 AR-1248-4	6.485	5.149	51202439	25806178	497.302	526.489
25) L5 AR-1248-5	6.524	5.542	54639060	20850289	502.386	524.065
26) L6 AR-1254-1	6.457	5.501	38639834	31102904	309.836	441.856 #
27) L6 AR-1254-2	6.682	5.650	54299291	11522240	297.710	182.829 #
28) L6 AR-1254-3	7.049	6.053	31244404	14141110	177.398	148.775
29) L6 AR-1254-4	7.338	6.283	17513541	8917380	171.028	191.236
30) L6 AR-1254-5	7.761	6.701	4874708	2786762	37.219	34.621
31) L7 AR-1260-1	7.216	6.197	3491921	6885938	23.551	97.811 #
32) L7 AR-1260-2	7.474	6.372	5777870	1663765	35.630	20.812 #
33) L7 AR-1260-3	7.822	6.525	1511015	1769568	11.558	23.531 #
34) L7 AR-1260-4	8.054	7.036f	2187255	731342	15.642	11.683 #
35) L7 AR-1260-5	8.396	7.242	1301384	306822	5.319	2.434 #
36) L8 AR-1262-1	7.822	0.000	1511015	0	8.997	N.D. #
37) L8 AR-1262-2	8.396	7.036f	1301384	731342	5.176	9.803 #
38) L8 AR-1262-3	8.728	7.591f	679935	356686	3.765	6.132 #
39) L8 AR-1262-4	8.803	7.591	58138	356686	0.626	3.522 #
40) L8 AR-1262-5	9.481	0.000	62823	0	0.734	N.D. #
41) L9 AR-1268-1	8.728	7.591f	679935	356686	2.010	2.111

Data Path : Z:\pestpcbsrv\HPCHEM1\ECD\_0\Data\P0042723\  
 Data File : P0094604.D  
 Signal(s) : Signal #1: ECD1A.ch Signal #2: ECD2B.ch  
 Acq On : 27 Apr 2023 10:17  
 Operator : YP/AJ  
 Sample : AR1248CCC500  
 Misc :  
 ALS Vial : 5 Sample Multiplier: 1

Instrument :  
 ECD\_0  
 ClientSampleId :

Integration File signal 1: autoint1.e  
 Integration File signal 2: autoint2.e  
 Quant Time: Apr 27 15:24:05 2023  
 Quant Method : Z:\pestpcbsrv\HPCHEM1\ECD\_0\methods\P0042623.M  
 Quant Title : GC EXTRACTABLES  
 QLast Update : Thu Apr 27 03:04:50 2023  
 Response via : Initial Calibration  
 Integrator: ChemStation

Volume Inj. : 2 µl  
 Signal #1 Phase : ZB-MR1 Signal #2 Phase: ZB-MR2  
 Signal #1 Info : 30Mx0.32mmx 0.50µ Signal #2 Info : 30M x 0.32mm x 0.25µm

	Compound	RT#1	RT#2	Resp#1	Resp#2	ng/ml	ng/ml
42)	L9 AR-1268-2	8.809	7.591	107920	356686	0.356	2.328 #
43)	L9 AR-1268-3	9.032	0.000	96440	0	0.357	N.D. #
44)	L9 AR-1268-4	9.481	0.000	62823	0	0.669	N.D. #
45)	L9 AR-1268-5	9.906	0.000	712627	0	0.848	N.D. #

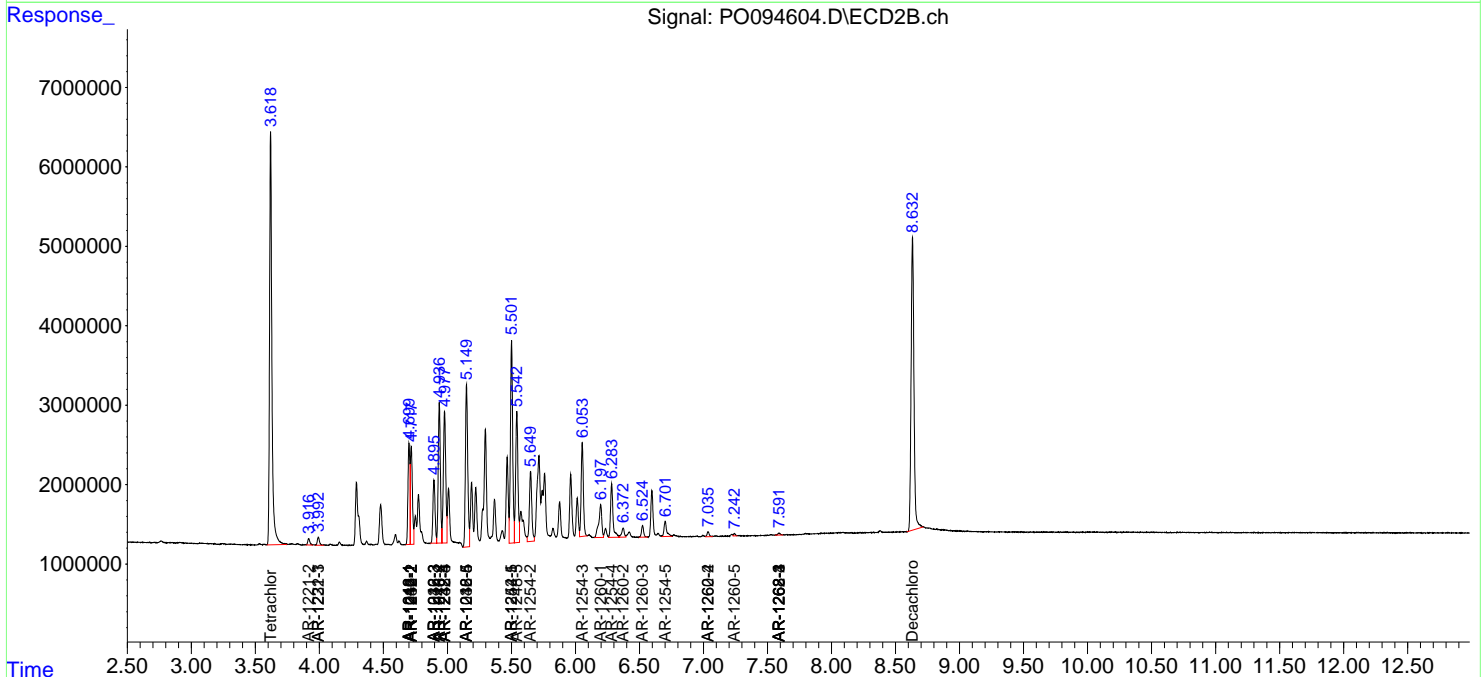
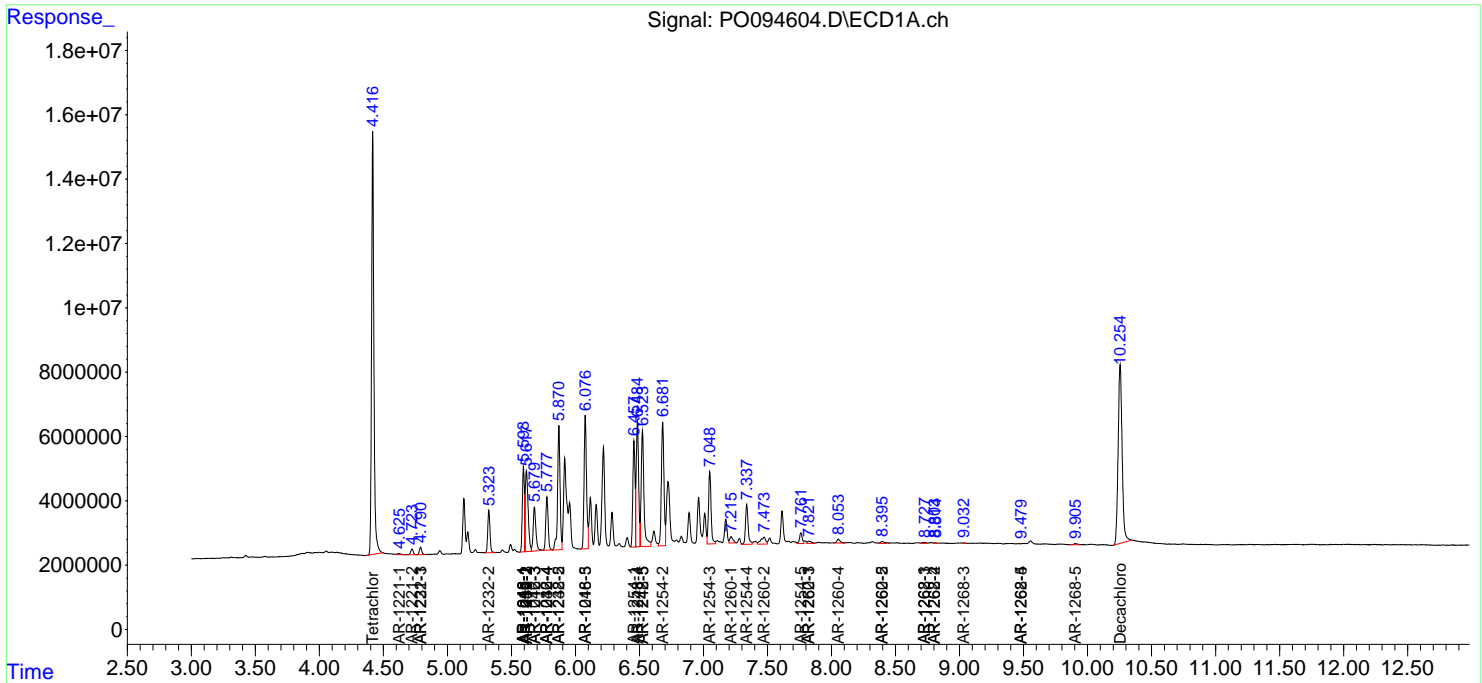
(f)=RT Delta > 1/2 Window (#)=Amounts differ by > 25% (m)=manual int.

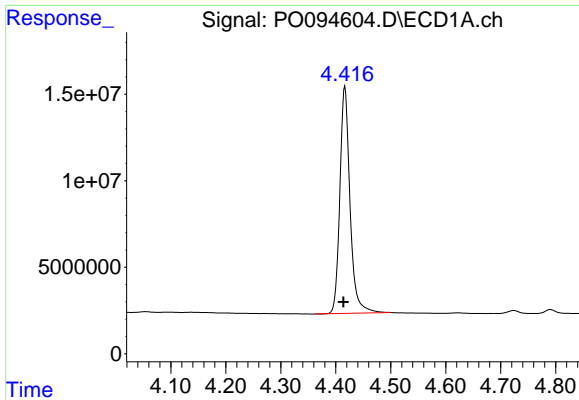
Data Path : Z:\pestpcbsrv\HPCHEM1\ECD\_O\Data\P0042723\  
 Data File : P0094604.D  
 Signal(s) : Signal #1: ECD1A.ch Signal #2: ECD2B.ch  
 Acq On : 27 Apr 2023 10:17  
 Operator : YP/AJ  
 Sample : AR1248CCC500  
 Misc :  
 ALS Vial : 5 Sample Multiplier: 1

Instrument :  
 ECD\_O  
 ClientSampleId :

Integration File signal 1: autoint1.e  
 Integration File signal 2: autoint2.e  
 Quant Time: Apr 27 15:24:05 2023  
 Quant Method : Z:\pestpcbsrv\HPCHEM1\ECD\_O\methods\P0042623.M  
 Quant Title : GC EXTRACTABLES  
 QLast Update : Thu Apr 27 03:04:50 2023  
 Response via : Initial Calibration  
 Integrator: ChemStation

Volume Inj. : 2 µl  
 Signal #1 Phase : ZB-MR1 Signal #2 Phase: ZB-MR2  
 Signal #1 Info : 30Mx0.32mmx 0.50µ Signal #2 Info : 30M x 0.32mm x 0.25µm

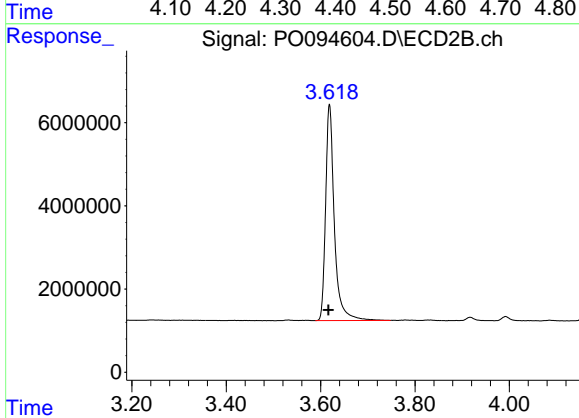




#1 Tetrachloro-m-xylene

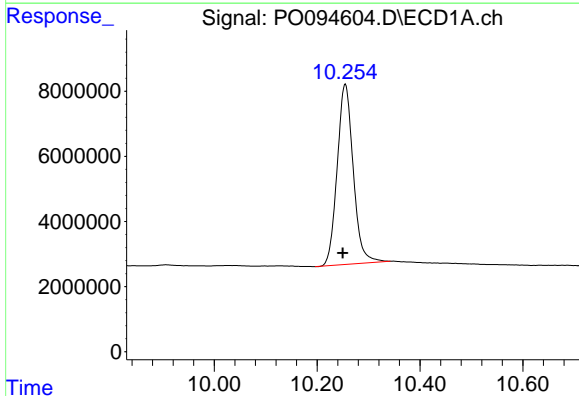
R.T.: 4.417 min  
Delta R.T.: 0.003 min  
Response: 168249886  
Conc: 48.84 ng/ml

Instrument :  
ECD\_O  
ClientSampleId :



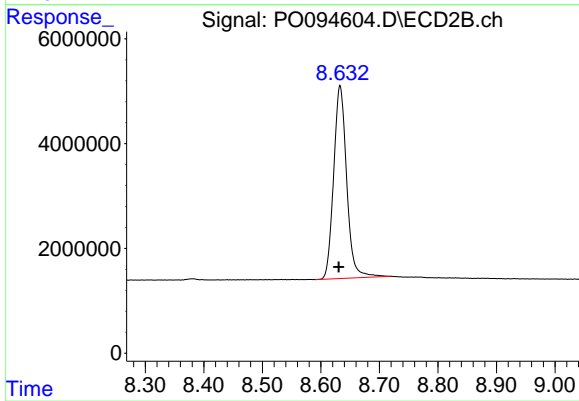
#1 Tetrachloro-m-xylene

R.T.: 3.619 min  
Delta R.T.: 0.002 min  
Response: 66957180  
Conc: 50.04 ng/ml



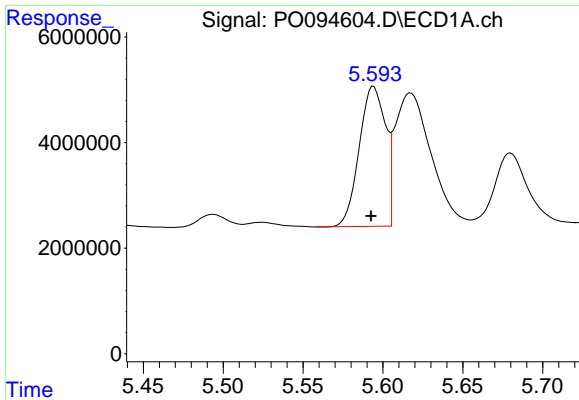
#2 Decachlorobiphenyl

R.T.: 10.255 min  
Delta R.T.: 0.005 min  
Response: 120090155  
Conc: 49.48 ng/ml



#2 Decachlorobiphenyl

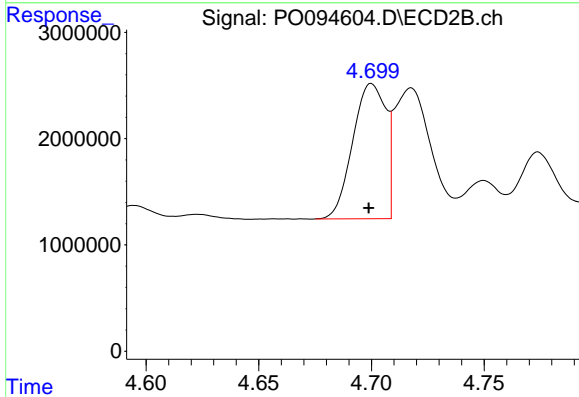
R.T.: 8.633 min  
Delta R.T.: 0.002 min  
Response: 56822809  
Conc: 50.48 ng/ml



#3 AR-1016-1

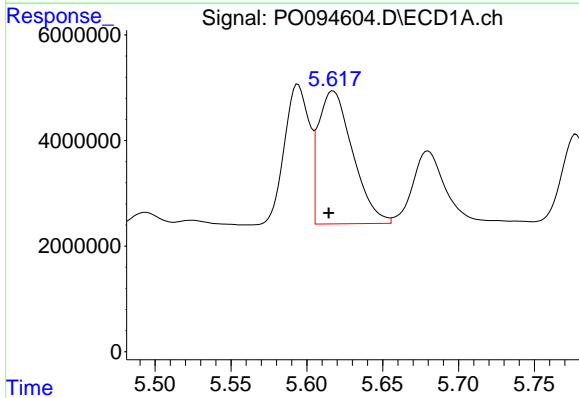
R.T.: 5.594 min  
 Delta R.T.: 0.002 min  
 Response: 30302660  
 Conc: 297.47 ng/ml

Instrument :  
 ECD\_O  
 ClientSampleId :



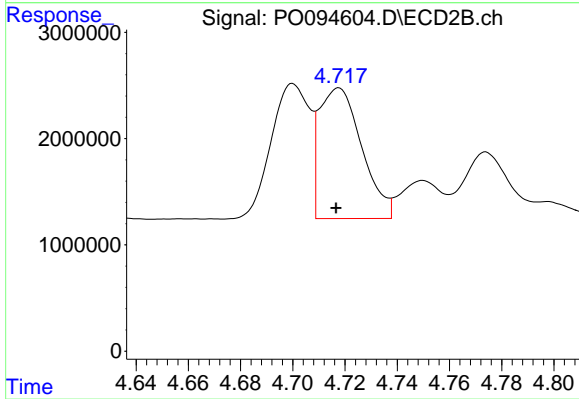
#3 AR-1016-1

R.T.: 4.700 min  
 Delta R.T.: 0.001 min  
 Response: 12995582  
 Conc: 327.66 ng/ml



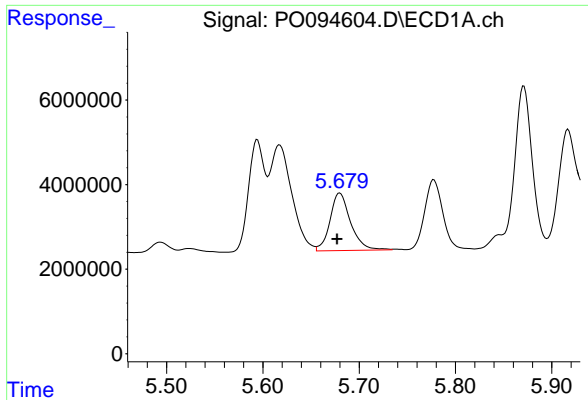
#4 AR-1016-2

R.T.: 5.617 min  
 Delta R.T.: 0.003 min  
 Response: 39432234  
 Conc: 260.61 ng/ml



#4 AR-1016-2

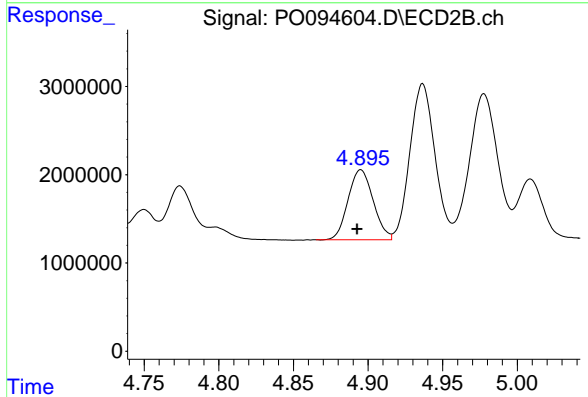
R.T.: 4.718 min  
 Delta R.T.: 0.001 min  
 Response: 13865651  
 Conc: 234.55 ng/ml



#5 AR-1016-3

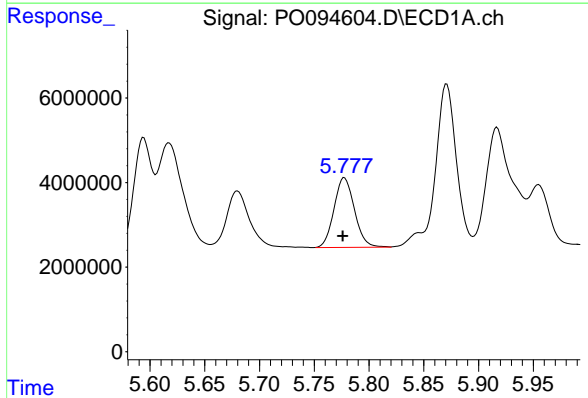
R.T.: 5.680 min  
 Delta R.T.: 0.003 min  
 Response: 20265324  
 Conc: 204.40 ng/ml

Instrument :  
 ECD\_O  
 ClientSampleId :



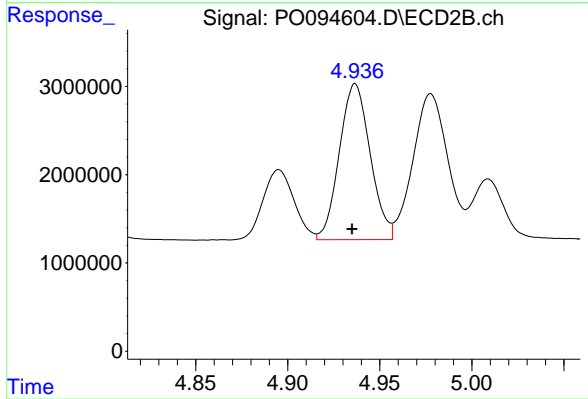
#5 AR-1016-3

R.T.: 4.895 min  
 Delta R.T.: 0.003 min  
 Response: 9285407  
 Conc: 295.79 ng/ml



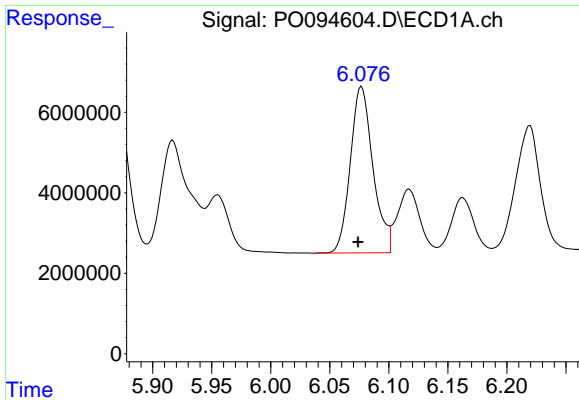
#6 AR-1016-4

R.T.: 5.778 min  
 Delta R.T.: 0.001 min  
 Response: 21458729  
 Conc: 288.30 ng/ml



#6 AR-1016-4

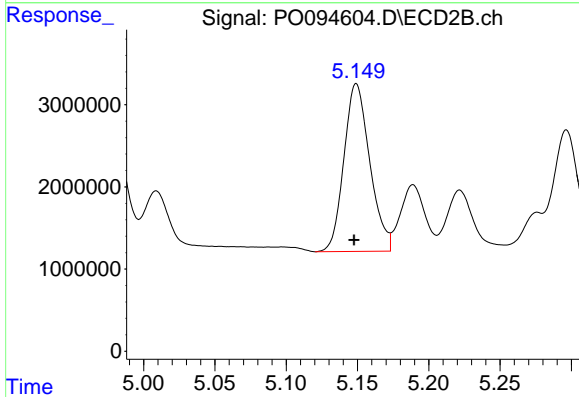
R.T.: 4.937 min  
 Delta R.T.: 0.002 min  
 Response: 20605100  
 Conc: 712.58 ng/ml



#7 AR-1016-5

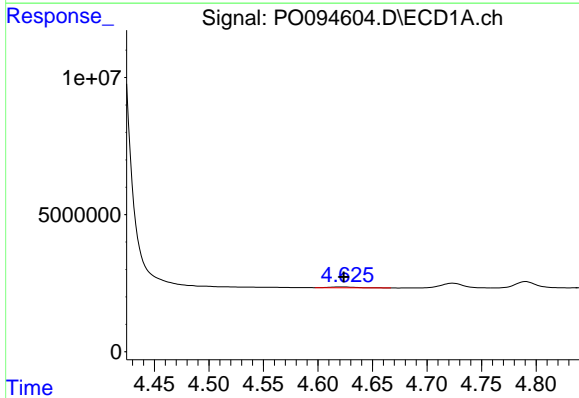
R.T.: 6.077 min  
 Delta R.T.: 0.003 min  
 Response: 55177584  
 Conc: 661.34 ng/ml

Instrument :  
 ECD\_O  
 ClientSampleId :



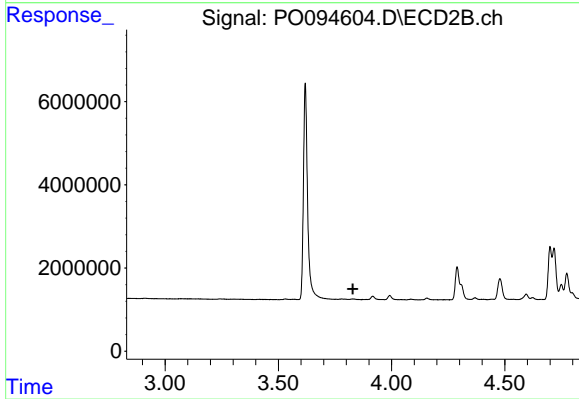
#7 AR-1016-5

R.T.: 5.149 min  
 Delta R.T.: 0.002 min  
 Response: 25806178  
 Conc: 705.12 ng/ml



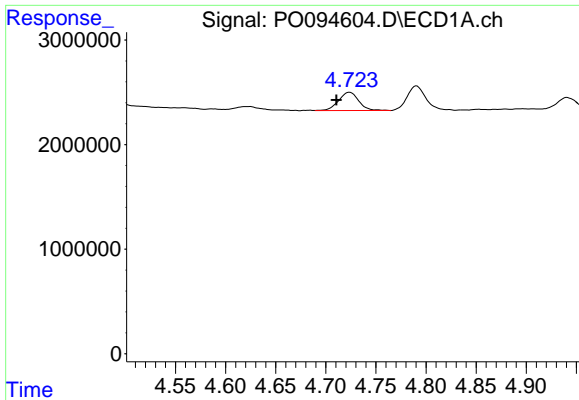
#8 AR-1221-1

R.T.: 4.625 min  
 Delta R.T.: 0.000 min  
 Response: 562098  
 Conc: 12.67 ng/ml



#8 AR-1221-1

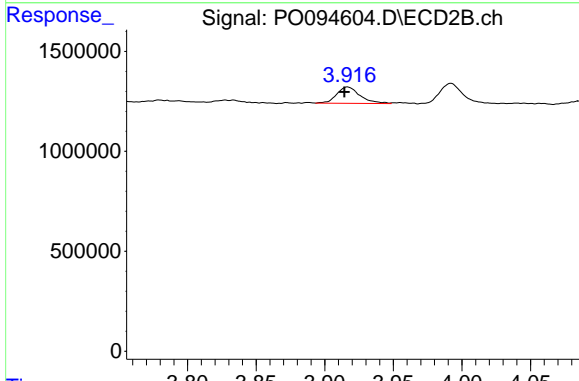
R.T.: 0.000 min  
 Exp R.T. : 3.829 min  
 Response: 0  
 Conc: N.D.



#9 AR-1221-2

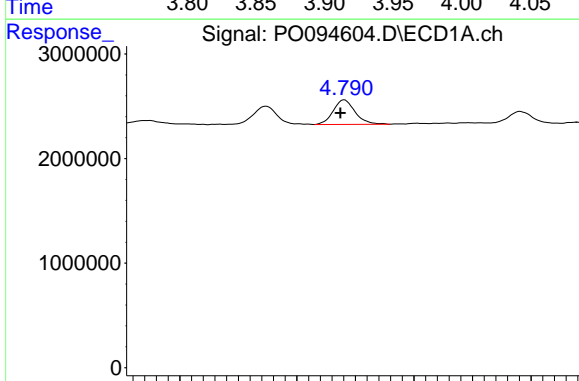
R.T.: 4.724 min  
 Delta R.T.: 0.013 min  
 Response: 2476666  
 Conc: 76.12 ng/ml

Instrument :  
 ECD\_O  
 ClientSampleId :



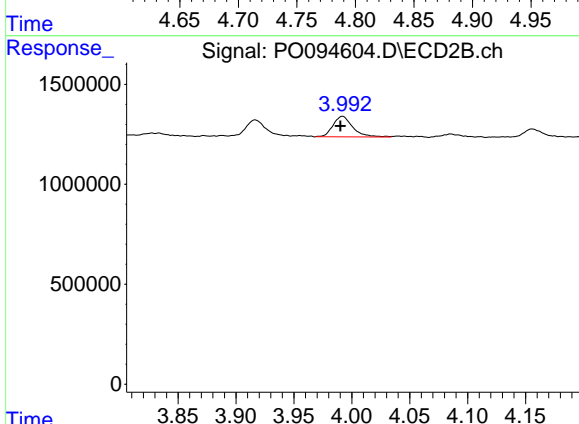
#9 AR-1221-2

R.T.: 3.917 min  
 Delta R.T.: 0.002 min  
 Response: 964200  
 Conc: 75.75 ng/ml



#10 AR-1221-3

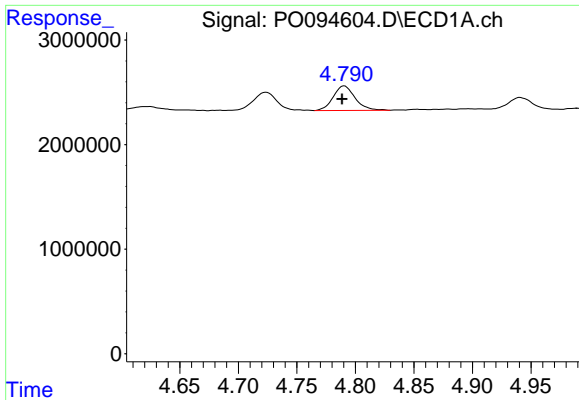
R.T.: 4.791 min  
 Delta R.T.: 0.003 min  
 Response: 3053363  
 Conc: 30.54 ng/ml



#10 AR-1221-3

R.T.: 3.992 min  
 Delta R.T.: 0.002 min  
 Response: 1226751  
 Conc: 31.09 ng/ml

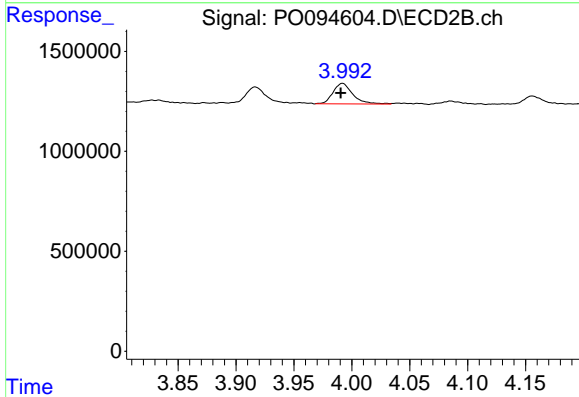




#11 AR-1232-1

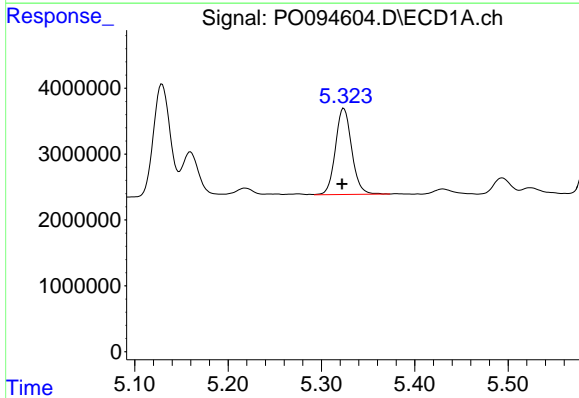
R.T.: 4.791 min  
 Delta R.T.: 0.002 min  
 Response: 3053363  
 Conc: 36.10 ng/ml

Instrument :  
 ECD\_O  
 ClientSampleId :



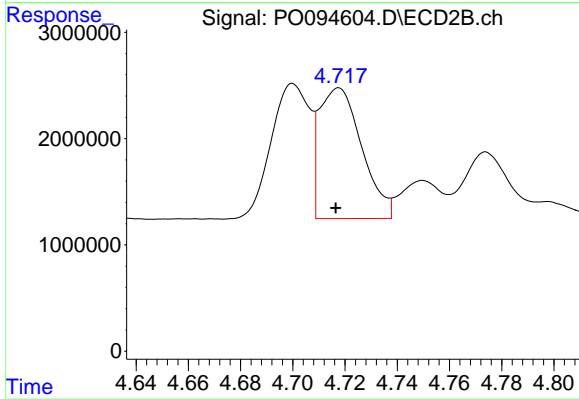
#11 AR-1232-1

R.T.: 3.992 min  
 Delta R.T.: 0.001 min  
 Response: 1226751  
 Conc: 36.05 ng/ml



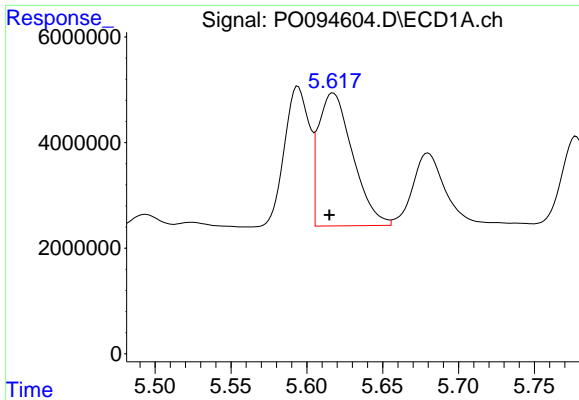
#12 AR-1232-2

R.T.: 5.324 min  
 Delta R.T.: 0.002 min  
 Response: 15882056  
 Conc: 370.38 ng/ml



#12 AR-1232-2

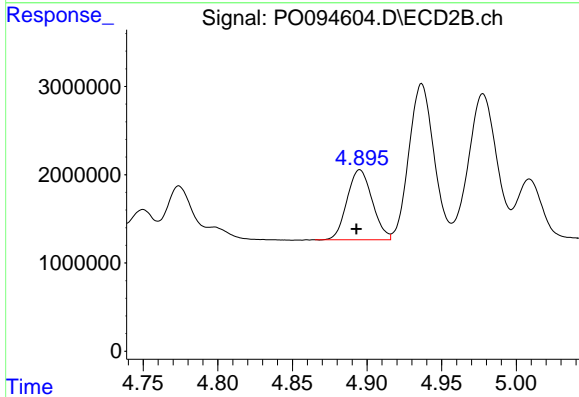
R.T.: 4.718 min  
 Delta R.T.: 0.001 min  
 Response: 13865651  
 Conc: 476.39 ng/ml



#13 AR-1232-3

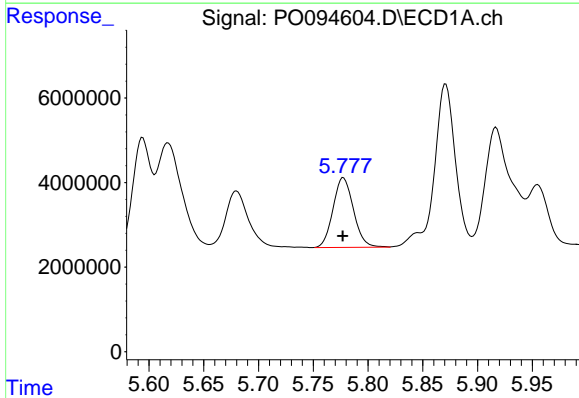
R.T.: 5.617 min  
 Delta R.T.: 0.003 min  
 Response: 39432234  
 Conc: 542.84 ng/ml

Instrument :  
 ECD\_O  
 ClientSampleId :



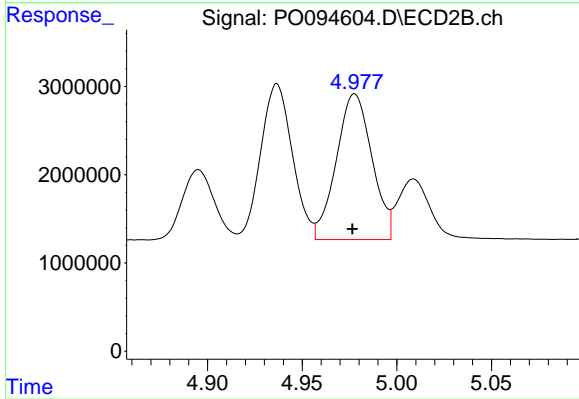
#13 AR-1232-3

R.T.: 4.895 min  
 Delta R.T.: 0.002 min  
 Response: 9285407  
 Conc: 625.82 ng/ml



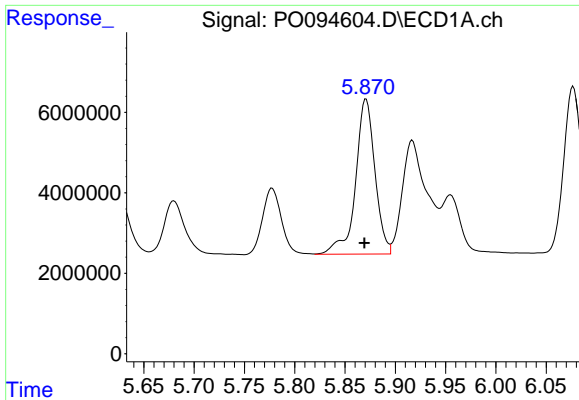
#14 AR-1232-4

R.T.: 5.778 min  
 Delta R.T.: 0.000 min  
 Response: 21458729  
 Conc: 611.09 ng/ml



#14 AR-1232-4

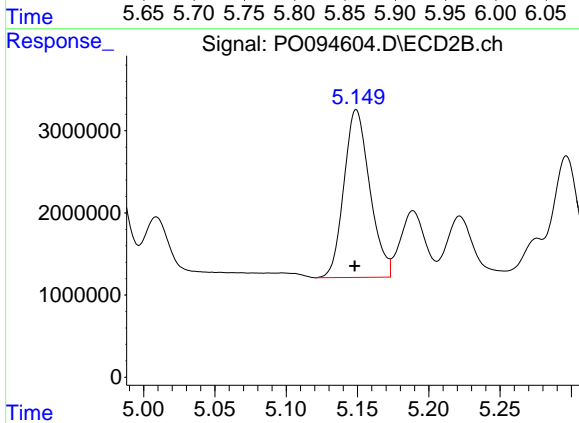
R.T.: 4.978 min  
 Delta R.T.: 0.001 min  
 Response: 21662767  
 Conc: 1393.66 ng/ml



#15 AR-1232-5

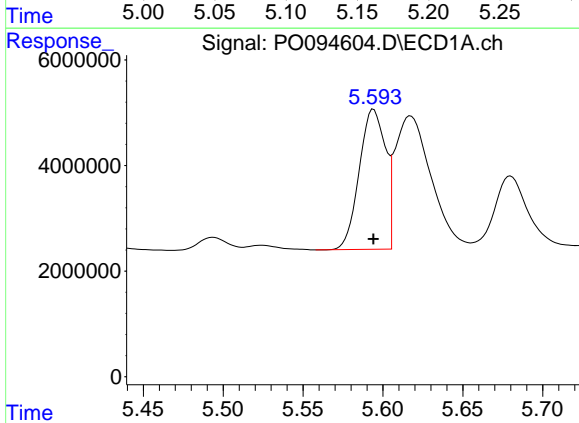
R.T.: 5.871 min  
 Delta R.T.: 0.001 min  
 Response: 51664716  
 Conc: 1566.95 ng/ml

Instrument :  
 ECD\_O  
 ClientSampleId :



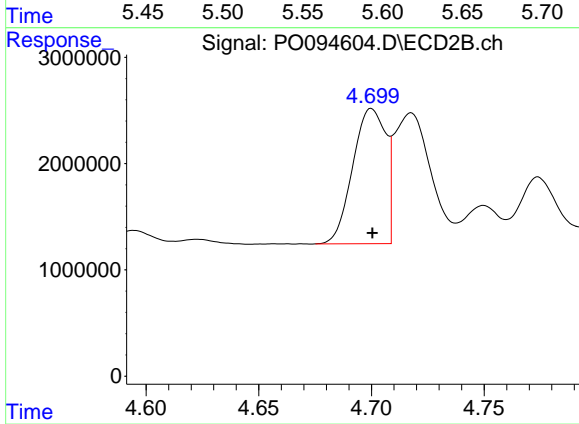
#15 AR-1232-5

R.T.: 5.149 min  
 Delta R.T.: 0.001 min  
 Response: 25806178  
 Conc: 1513.97 ng/ml



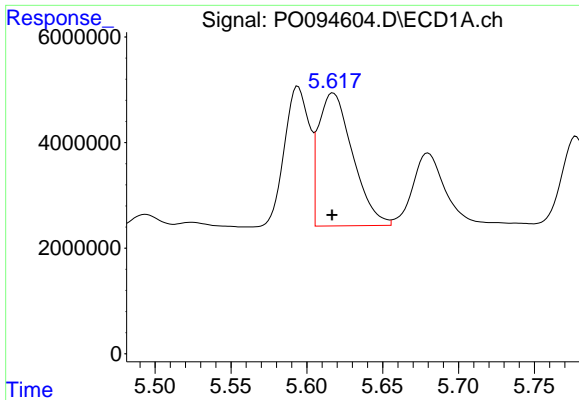
#16 AR-1242-1

R.T.: 5.594 min  
 Delta R.T.: 0.000 min  
 Response: 30302660  
 Conc: 362.75 ng/ml



#16 AR-1242-1

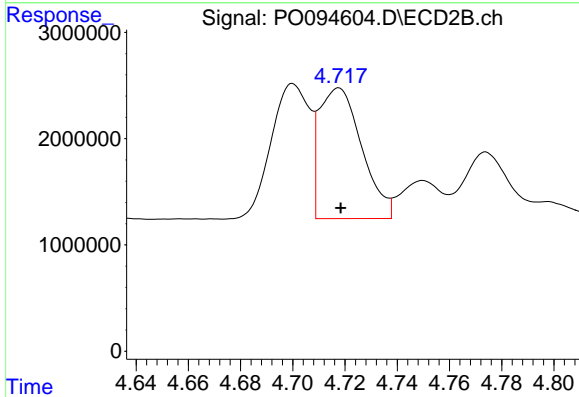
R.T.: 4.700 min  
 Delta R.T.: 0.000 min  
 Response: 12995582  
 Conc: 392.40 ng/ml



#17 AR-1242-2

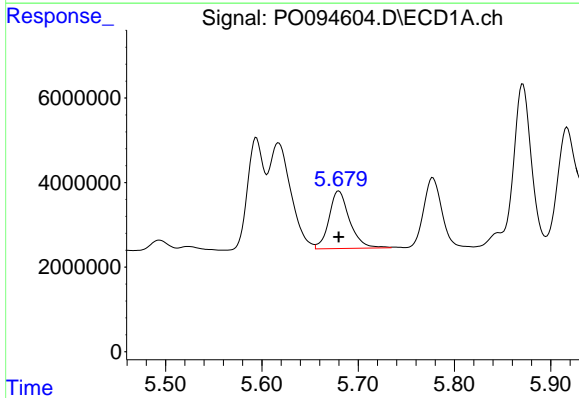
R.T.: 5.617 min  
 Delta R.T.: 0.000 min  
 Response: 39432234  
 Conc: 313.66 ng/ml

Instrument :  
 ECD\_O  
 ClientSampleId :



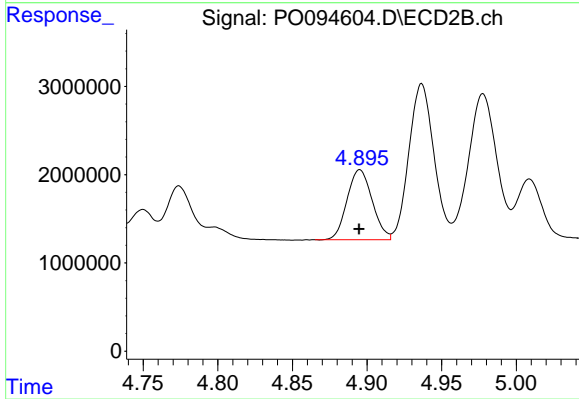
#17 AR-1242-2

R.T.: 4.718 min  
 Delta R.T.: 0.000 min  
 Response: 13865651  
 Conc: 281.28 ng/ml



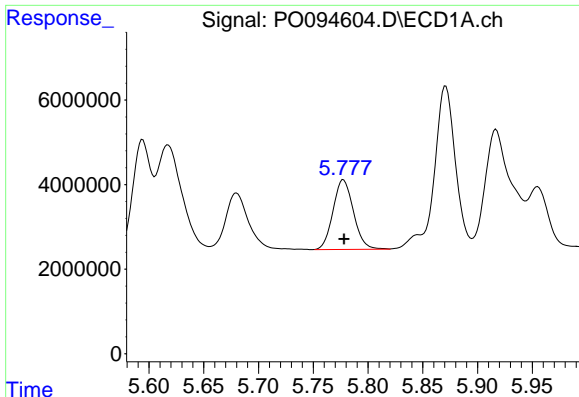
#18 AR-1242-3

R.T.: 5.680 min  
 Delta R.T.: 0.000 min  
 Response: 20265324  
 Conc: 248.85 ng/ml



#18 AR-1242-3

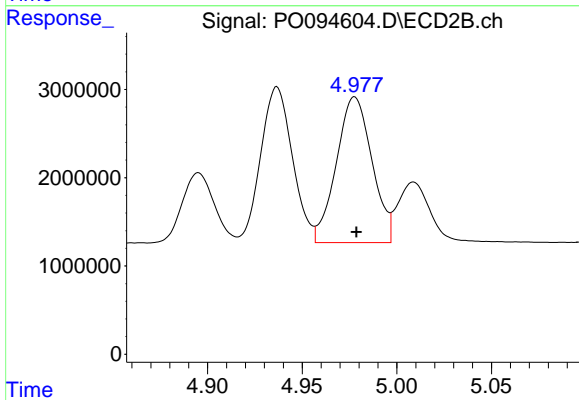
R.T.: 4.895 min  
 Delta R.T.: 0.000 min  
 Response: 9285407  
 Conc: 356.87 ng/ml



#19 AR-1242-4

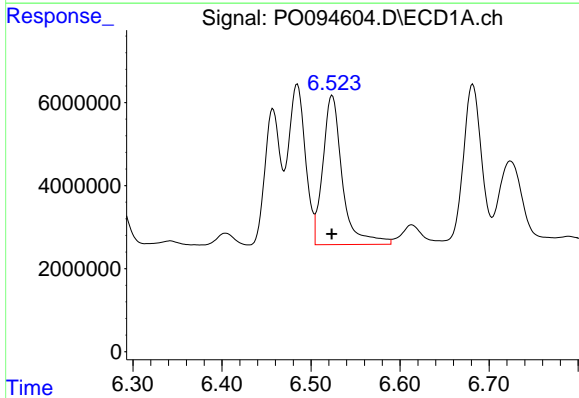
R.T.: 5.778 min  
 Delta R.T.: 0.000 min  
 Response: 21458729  
 Conc: 349.41 ng/ml

Instrument :  
 ECD\_O  
 ClientSampleId :



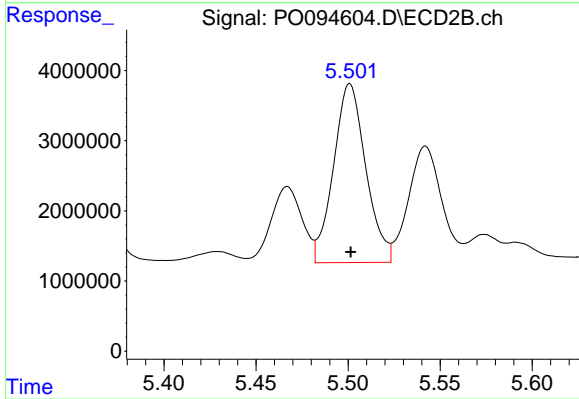
#19 AR-1242-4

R.T.: 4.978 min  
 Delta R.T.: 0.000 min  
 Response: 21662767  
 Conc: 731.82 ng/ml



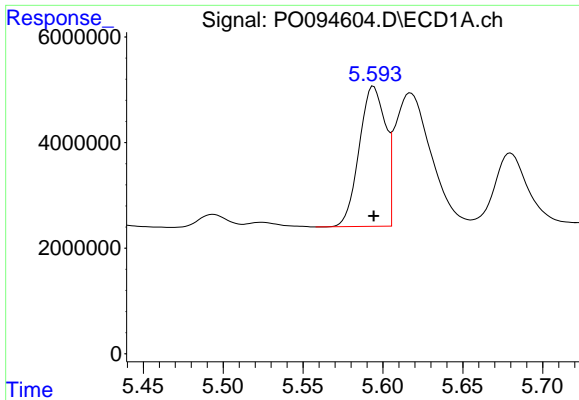
#20 AR-1242-5

R.T.: 6.524 min  
 Delta R.T.: 0.000 min  
 Response: 54639060  
 Conc: 849.05 ng/ml



#20 AR-1242-5

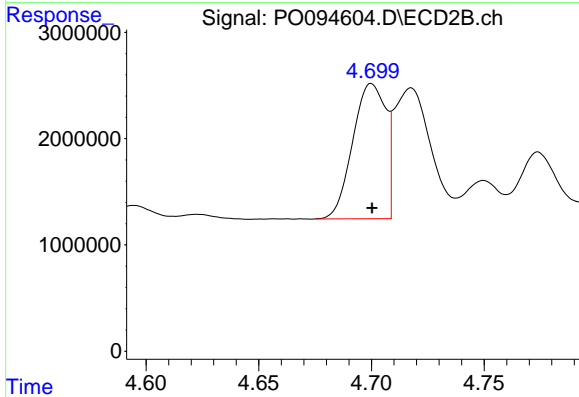
R.T.: 5.501 min  
 Delta R.T.: 0.000 min  
 Response: 31102904  
 Conc: 984.42 ng/ml



#21 AR-1248-1

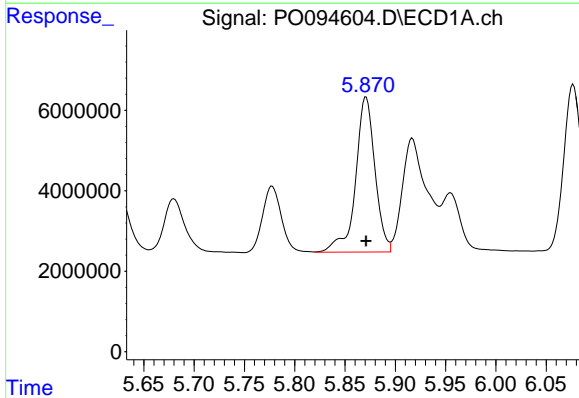
R.T.: 5.594 min  
 Delta R.T.: 0.000 min  
 Response: 30302660  
 Conc: 484.88 ng/ml

Instrument :  
 ECD\_O  
 ClientSampleId :



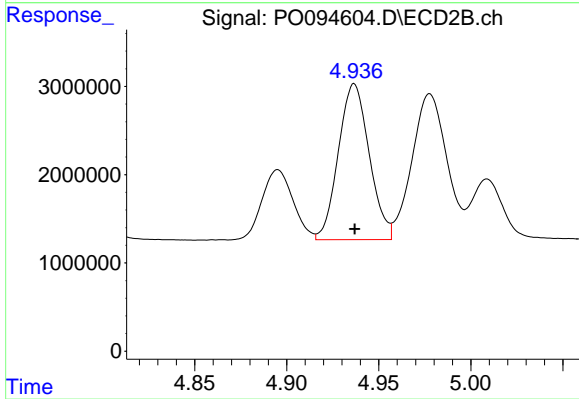
#21 AR-1248-1

R.T.: 4.700 min  
 Delta R.T.: 0.000 min  
 Response: 12995582  
 Conc: 509.54 ng/ml



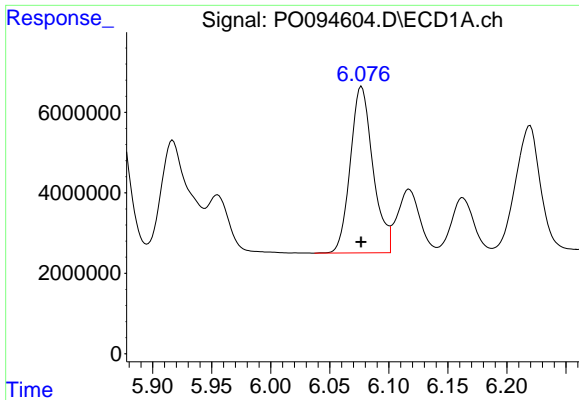
#22 AR-1248-2

R.T.: 5.871 min  
 Delta R.T.: 0.000 min  
 Response: 51664716  
 Conc: 493.77 ng/ml



#22 AR-1248-2

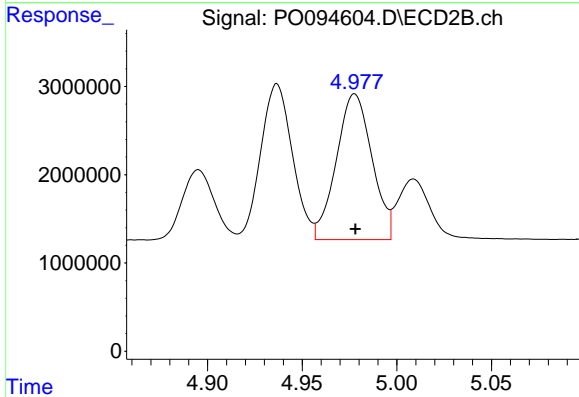
R.T.: 4.937 min  
 Delta R.T.: 0.000 min  
 Response: 20605100  
 Conc: 497.53 ng/ml



#23 AR-1248-3

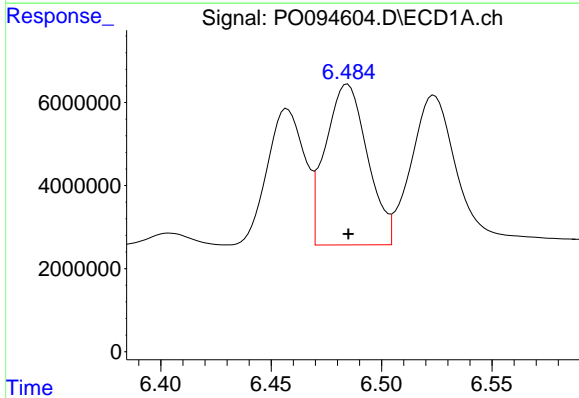
R.T.: 6.077 min  
 Delta R.T.: 0.000 min  
 Response: 55177584  
 Conc: 498.33 ng/ml

Instrument :  
 ECD\_O  
 ClientSampleId :



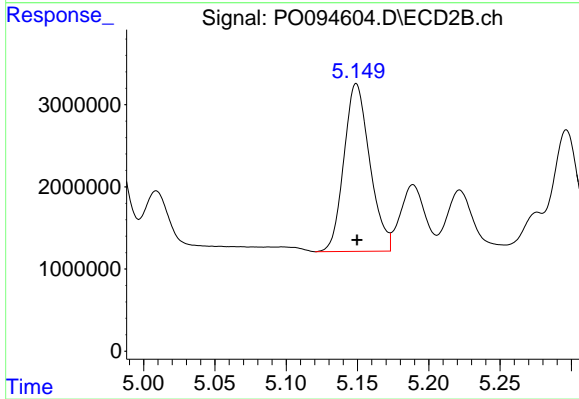
#23 AR-1248-3

R.T.: 4.978 min  
 Delta R.T.: 0.000 min  
 Response: 21662767  
 Conc: 504.93 ng/ml



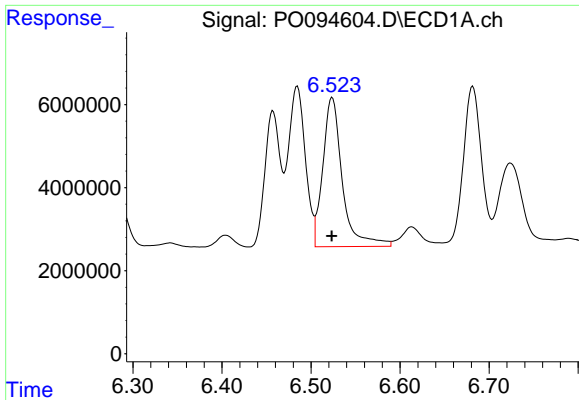
#24 AR-1248-4

R.T.: 6.485 min  
 Delta R.T.: 0.000 min  
 Response: 51202439  
 Conc: 497.30 ng/ml



#24 AR-1248-4

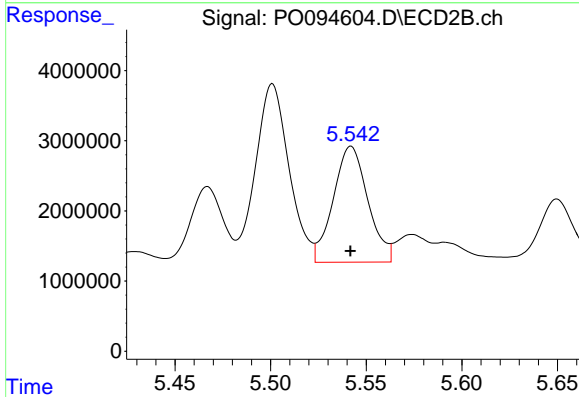
R.T.: 5.149 min  
 Delta R.T.: 0.000 min  
 Response: 25806178  
 Conc: 526.49 ng/ml



#25 AR-1248-5

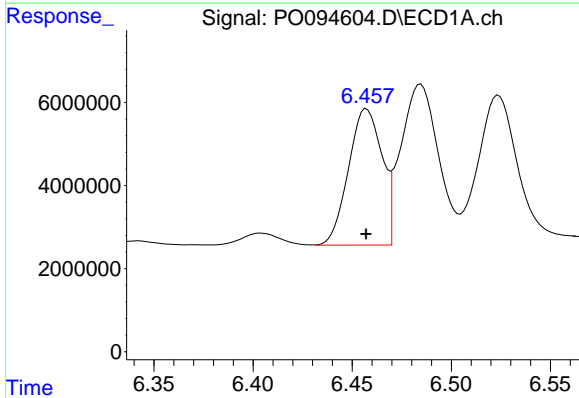
R.T.: 6.524 min  
 Delta R.T.: 0.000 min  
 Response: 54639060  
 Conc: 502.39 ng/ml

Instrument :  
 ECD\_O  
 ClientSampleId :



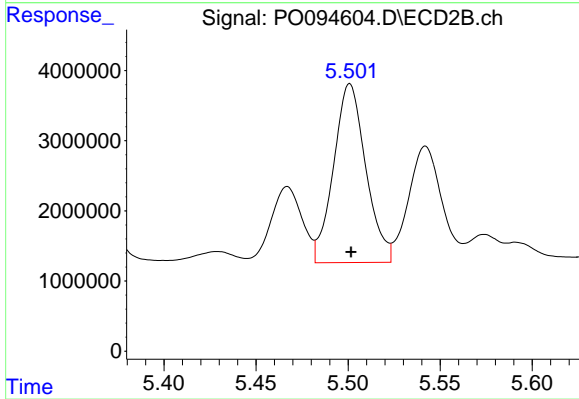
#25 AR-1248-5

R.T.: 5.542 min  
 Delta R.T.: 0.000 min  
 Response: 20850289  
 Conc: 524.06 ng/ml



#26 AR-1254-1

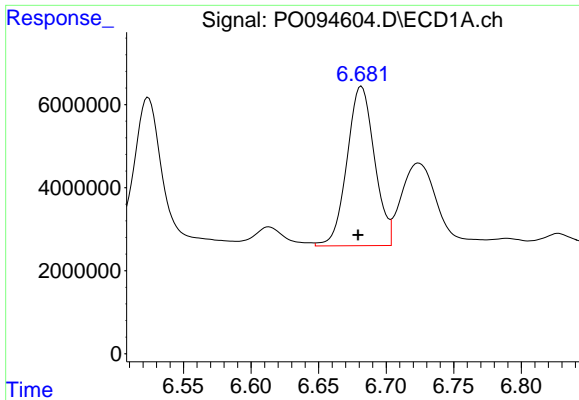
R.T.: 6.457 min  
 Delta R.T.: 0.000 min  
 Response: 38639834  
 Conc: 309.84 ng/ml



#26 AR-1254-1

R.T.: 5.501 min  
 Delta R.T.: 0.000 min  
 Response: 31102904  
 Conc: 441.86 ng/ml

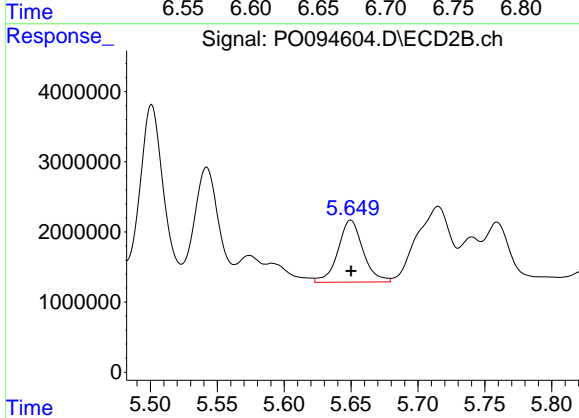




#27 AR-1254-2

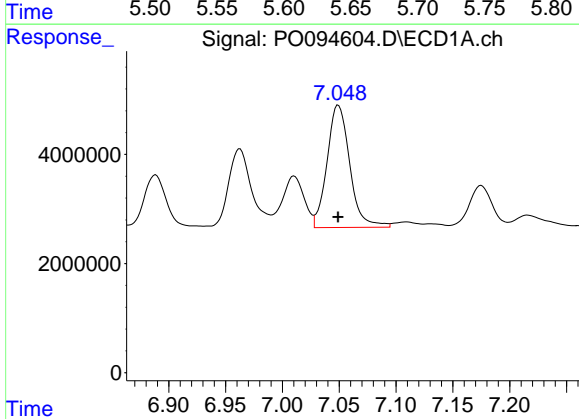
R.T.: 6.682 min  
 Delta R.T.: 0.003 min  
 Response: 54299291  
 Conc: 297.71 ng/ml

Instrument :  
 ECD\_O  
 ClientSampleId :



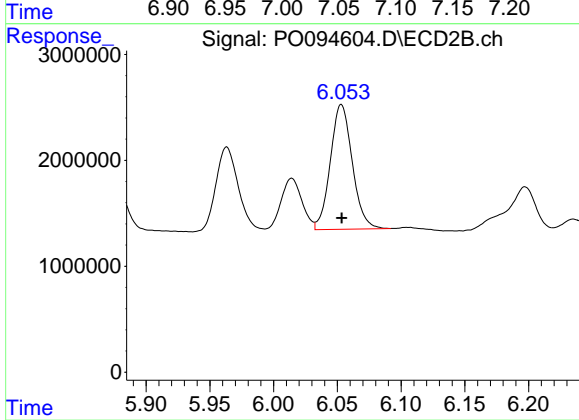
#27 AR-1254-2

R.T.: 5.650 min  
 Delta R.T.: 0.000 min  
 Response: 11522240  
 Conc: 182.83 ng/ml



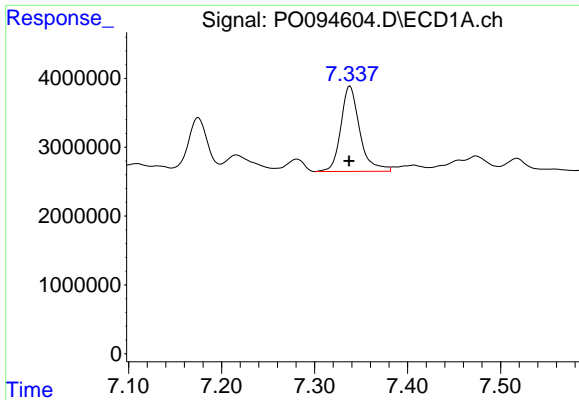
#28 AR-1254-3

R.T.: 7.049 min  
 Delta R.T.: 0.000 min  
 Response: 31244404  
 Conc: 177.40 ng/ml



#28 AR-1254-3

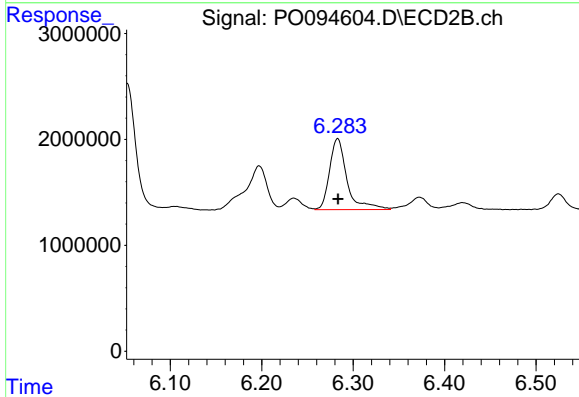
R.T.: 6.053 min  
 Delta R.T.: 0.000 min  
 Response: 14141110  
 Conc: 148.78 ng/ml



#29 AR-1254-4

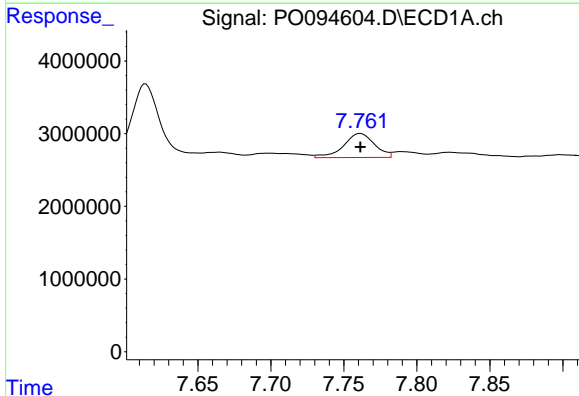
R.T.: 7.338 min  
 Delta R.T.: 0.001 min  
 Response: 17513541  
 Conc: 171.03 ng/ml

Instrument :  
 ECD\_O  
 ClientSampleId :



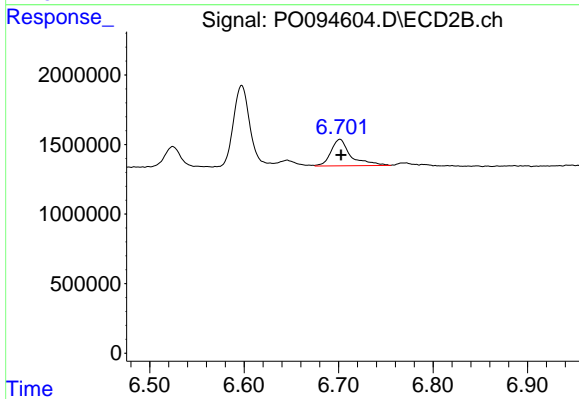
#29 AR-1254-4

R.T.: 6.283 min  
 Delta R.T.: 0.000 min  
 Response: 8917380  
 Conc: 191.24 ng/ml



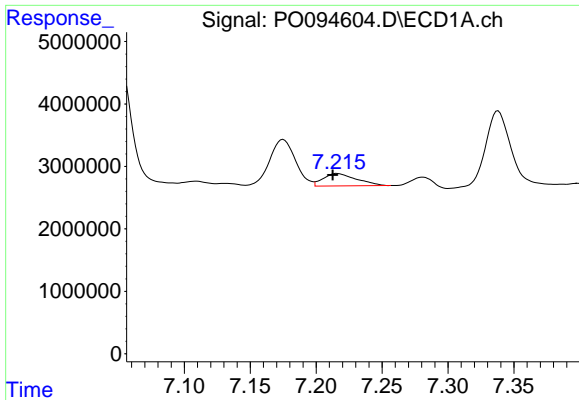
#30 AR-1254-5

R.T.: 7.761 min  
 Delta R.T.: 0.000 min  
 Response: 4874708  
 Conc: 37.22 ng/ml



#30 AR-1254-5

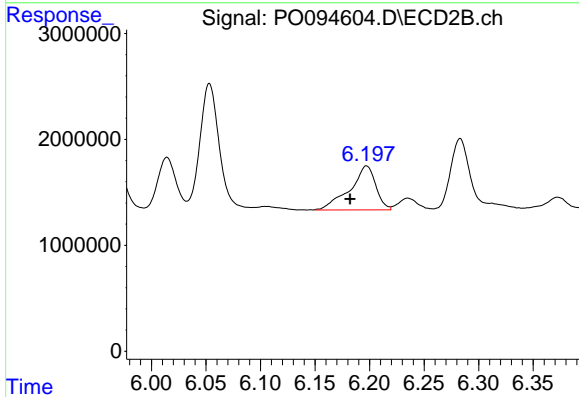
R.T.: 6.701 min  
 Delta R.T.: -0.001 min  
 Response: 2786762  
 Conc: 34.62 ng/ml



#31 AR-1260-1

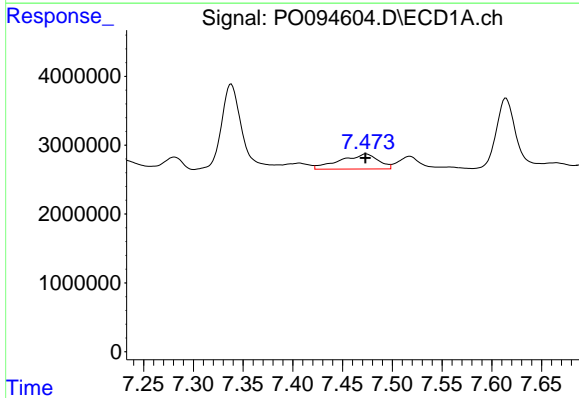
R.T.: 7.216 min  
 Delta R.T.: 0.003 min  
 Response: 3491921  
 Conc: 23.55 ng/ml

Instrument :  
 ECD\_O  
 ClientSampleId :



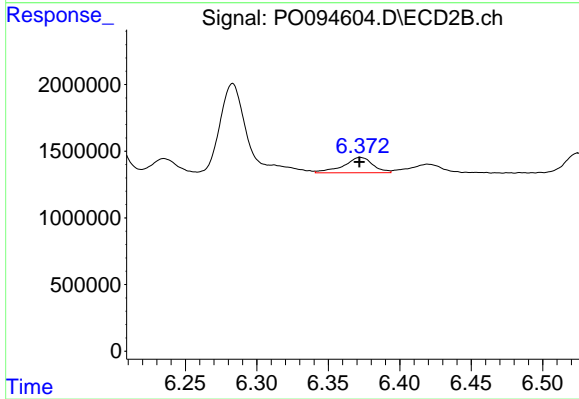
#31 AR-1260-1

R.T.: 6.197 min  
 Delta R.T.: 0.015 min  
 Response: 6885938  
 Conc: 97.81 ng/ml



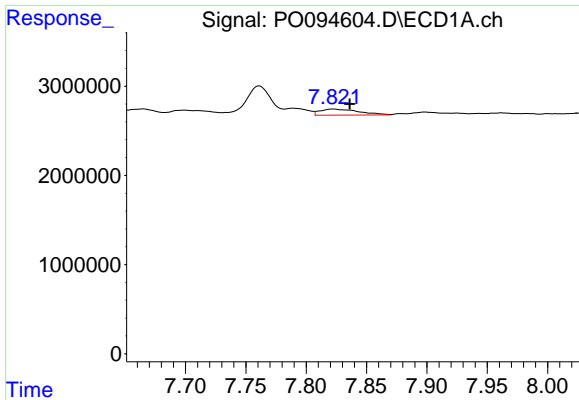
#32 AR-1260-2

R.T.: 7.474 min  
 Delta R.T.: 0.000 min  
 Response: 5777870  
 Conc: 35.63 ng/ml



#32 AR-1260-2

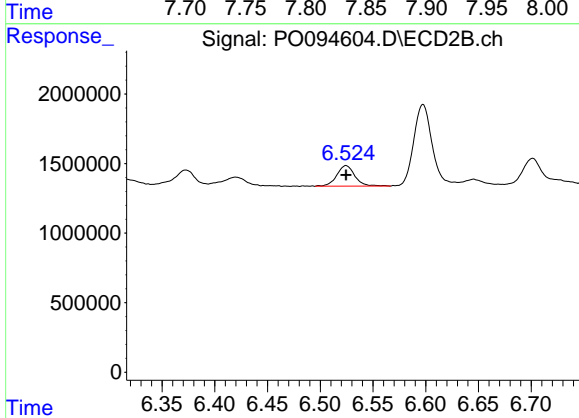
R.T.: 6.372 min  
 Delta R.T.: 0.000 min  
 Response: 1663765  
 Conc: 20.81 ng/ml



#33 AR-1260-3

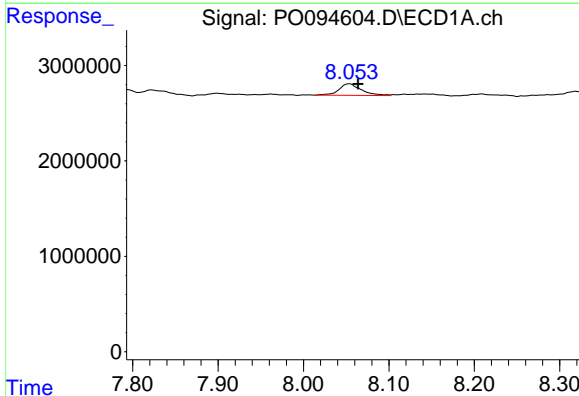
R.T.: 7.822 min  
 Delta R.T.: -0.014 min  
 Response: 1511015  
 Conc: 11.56 ng/ml

Instrument :  
 ECD\_O  
 ClientSampleId :



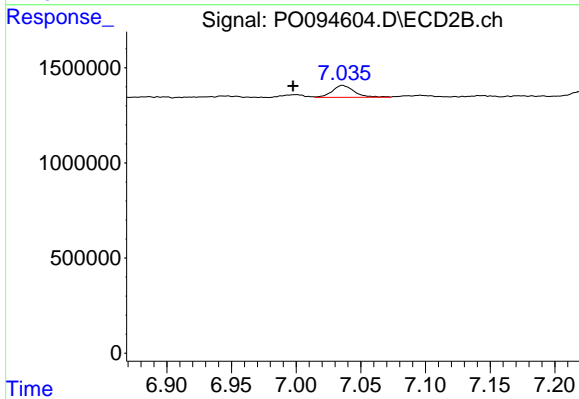
#33 AR-1260-3

R.T.: 6.525 min  
 Delta R.T.: 0.000 min  
 Response: 1769568  
 Conc: 23.53 ng/ml



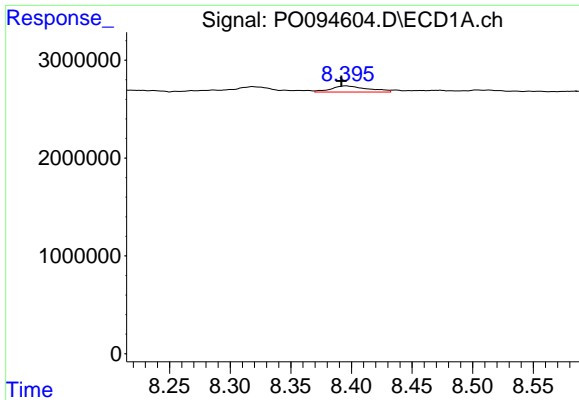
#34 AR-1260-4

R.T.: 8.054 min  
 Delta R.T.: -0.010 min  
 Response: 2187255  
 Conc: 15.64 ng/ml



#34 AR-1260-4

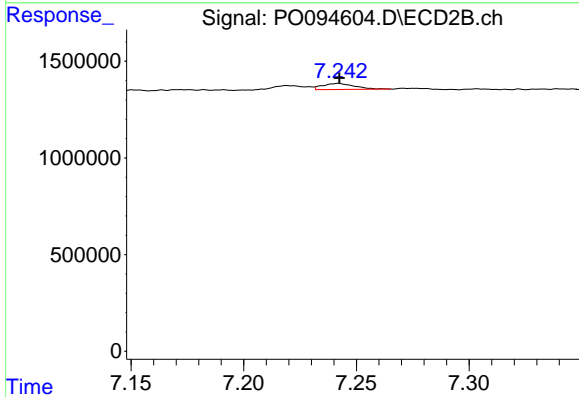
R.T.: 7.036 min  
 Delta R.T.: 0.038 min  
 Response: 731342  
 Conc: 11.68 ng/ml



#35 AR-1260-5

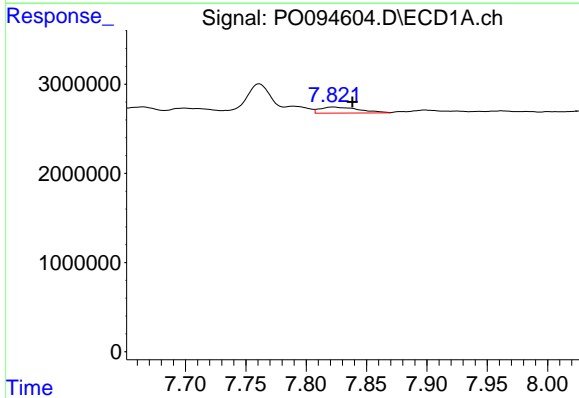
R.T.: 8.396 min  
 Delta R.T.: 0.004 min  
 Response: 1301384  
 Conc: 5.32 ng/ml

Instrument :  
 ECD\_O  
 ClientSampleId :



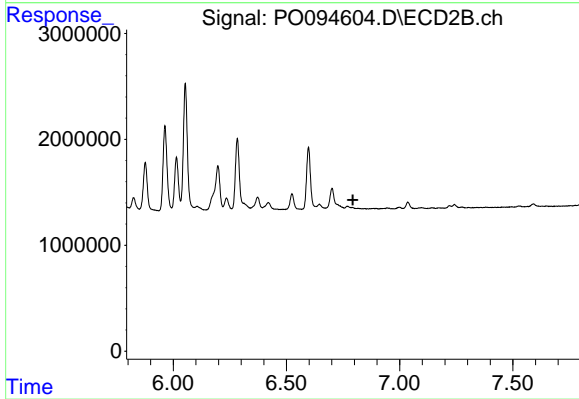
#35 AR-1260-5

R.T.: 7.242 min  
 Delta R.T.: 0.000 min  
 Response: 306822  
 Conc: 2.43 ng/ml



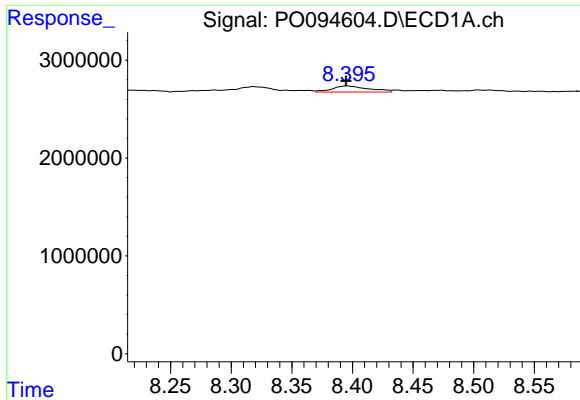
#36 AR-1262-1

R.T.: 7.822 min  
 Delta R.T.: -0.016 min  
 Response: 1511015  
 Conc: 9.00 ng/ml



#36 AR-1262-1

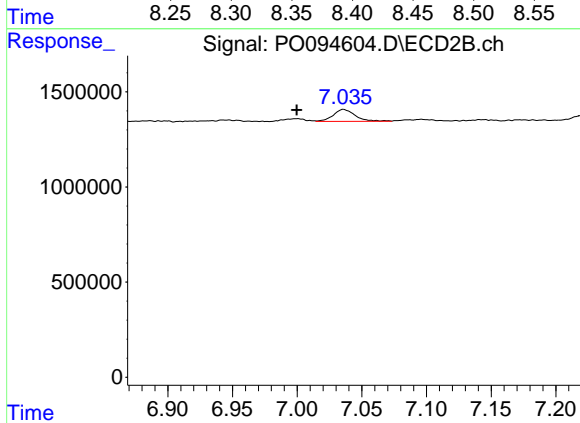
R.T.: 0.000 min  
 Exp R.T. : 6.793 min  
 Response: 0  
 Conc: N.D.



#37 AR-1262-2

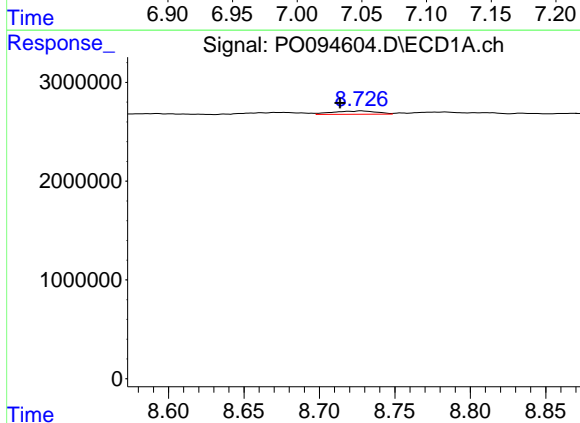
R.T.: 8.396 min  
 Delta R.T.: 0.000 min  
 Response: 1301384  
 Conc: 5.18 ng/ml

Instrument :  
 ECD\_O  
 ClientSampleId :



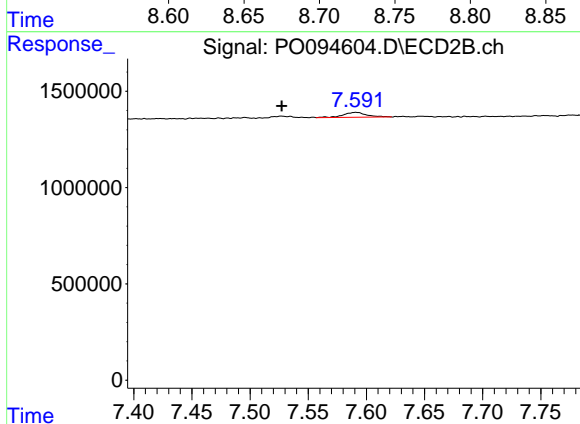
#37 AR-1262-2

R.T.: 7.036 min  
 Delta R.T.: 0.036 min  
 Response: 731342  
 Conc: 9.80 ng/ml



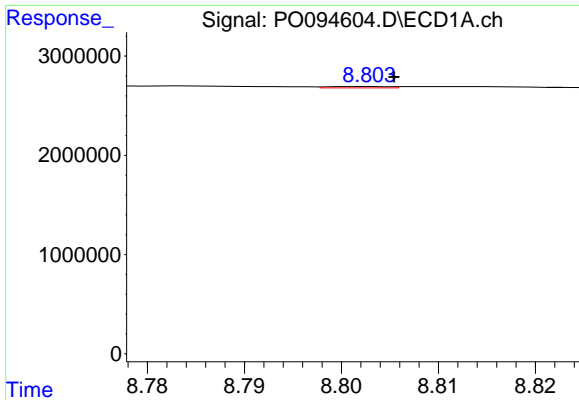
#38 AR-1262-3

R.T.: 8.728 min  
 Delta R.T.: 0.014 min  
 Response: 679935  
 Conc: 3.76 ng/ml



#38 AR-1262-3

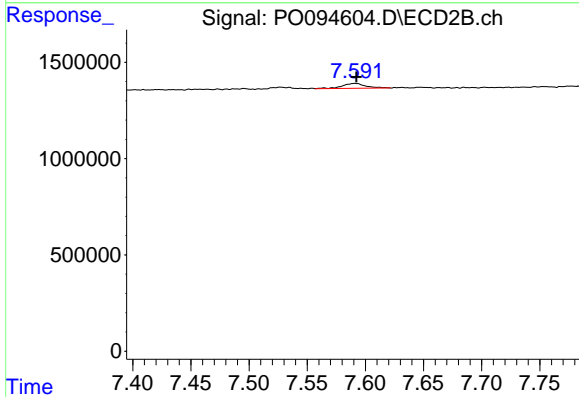
R.T.: 7.591 min  
 Delta R.T.: 0.064 min  
 Response: 356686  
 Conc: 6.13 ng/ml



#39 AR-1262-4

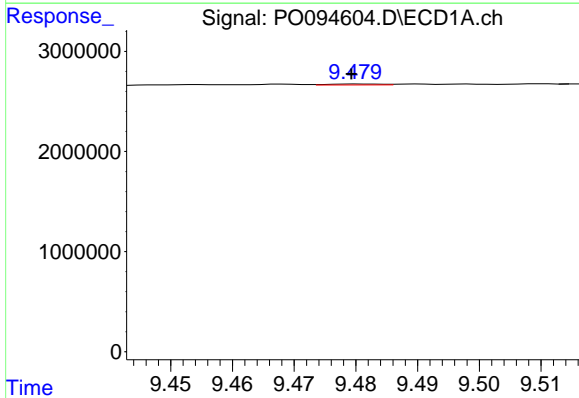
R.T.: 8.803 min  
 Delta R.T.: -0.002 min  
 Response: 58138  
 Conc: 0.63 ng/ml

Instrument :  
 ECD\_O  
 ClientSampleId :



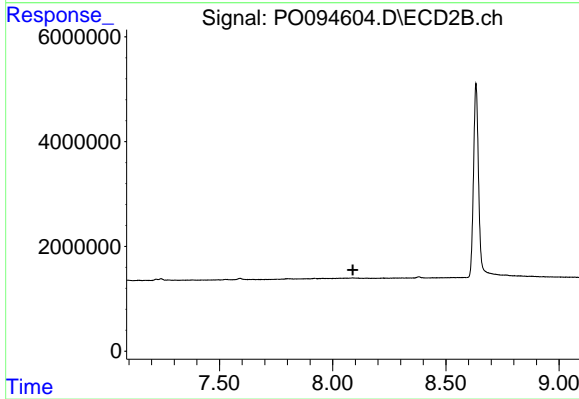
#39 AR-1262-4

R.T.: 7.591 min  
 Delta R.T.: -0.001 min  
 Response: 356686  
 Conc: 3.52 ng/ml



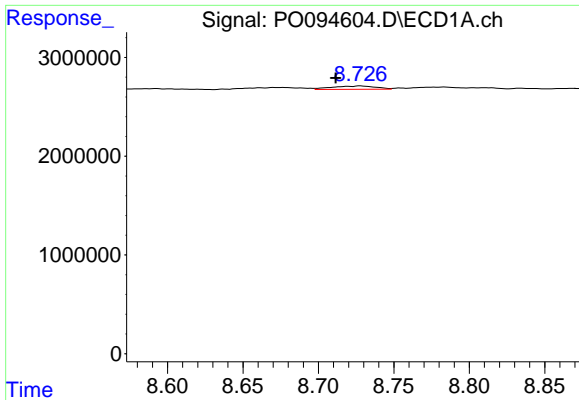
#40 AR-1262-5

R.T.: 9.481 min  
 Delta R.T.: 0.001 min  
 Response: 62823  
 Conc: 0.73 ng/ml



#40 AR-1262-5

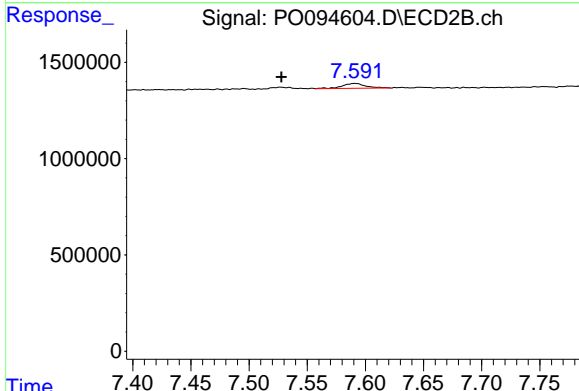
R.T.: 0.000 min  
 Exp R.T. : 8.089 min  
 Response: 0  
 Conc: N.D.



#41 AR-1268-1

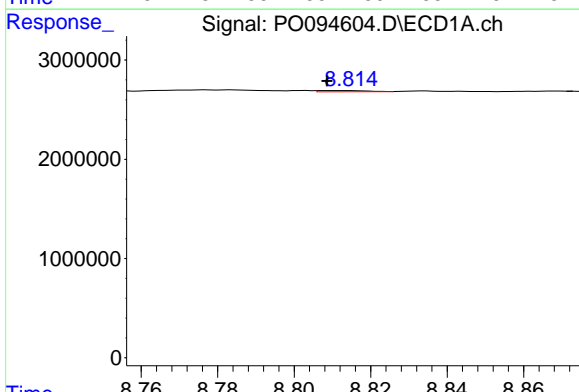
R.T.: 8.728 min  
 Delta R.T.: 0.016 min  
 Response: 679935  
 Conc: 2.01 ng/ml

Instrument :  
 ECD\_O  
 ClientSampleId :



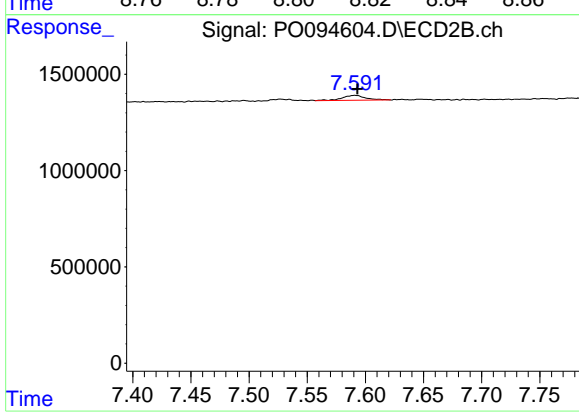
#41 AR-1268-1

R.T.: 7.591 min  
 Delta R.T.: 0.063 min  
 Response: 356686  
 Conc: 2.11 ng/ml



#42 AR-1268-2

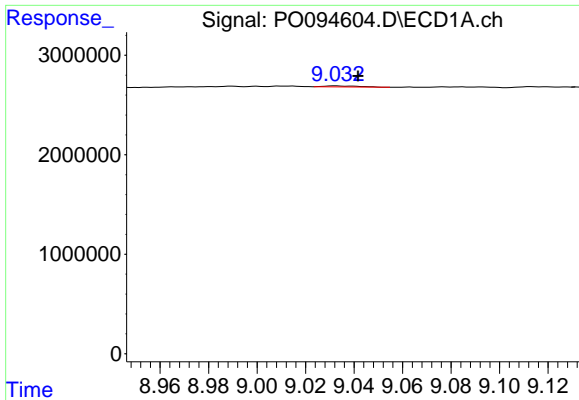
R.T.: 8.809 min  
 Delta R.T.: 0.000 min  
 Response: 107920  
 Conc: 0.36 ng/ml



#42 AR-1268-2

R.T.: 7.591 min  
 Delta R.T.: -0.002 min  
 Response: 356686  
 Conc: 2.33 ng/ml

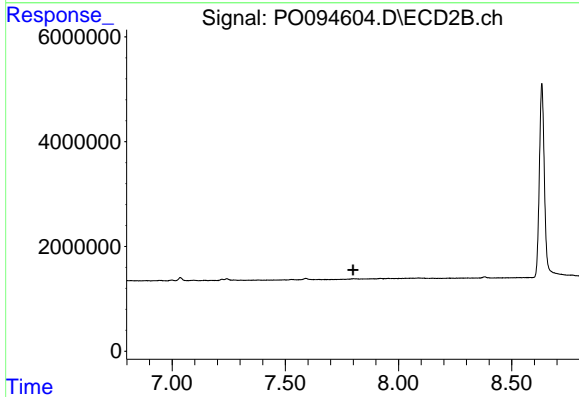




#43 AR-1268-3

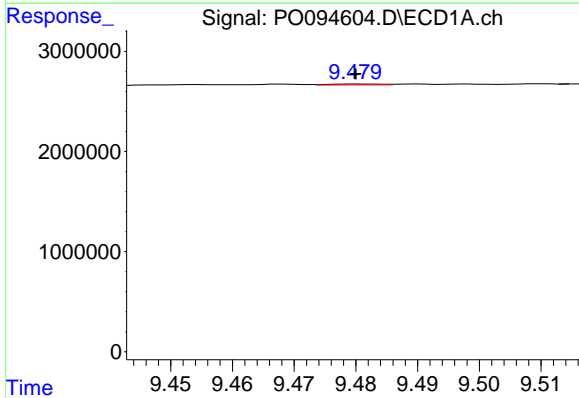
R.T.: 9.032 min  
 Delta R.T.: -0.009 min  
 Response: 96440  
 Conc: 0.36 ng/ml

Instrument :  
 ECD\_O  
 ClientSampleId :



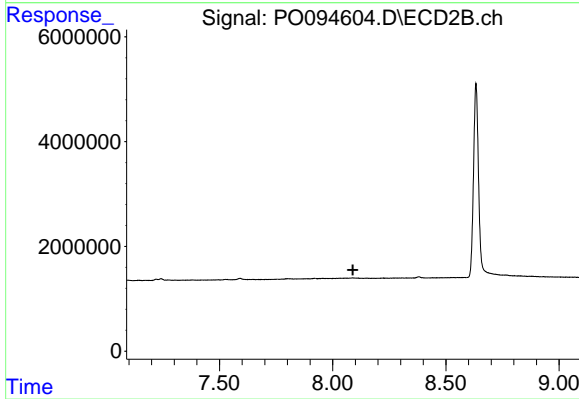
#43 AR-1268-3

R.T.: 0.000 min  
 Exp R.T. : 7.799 min  
 Response: 0  
 Conc: N.D.



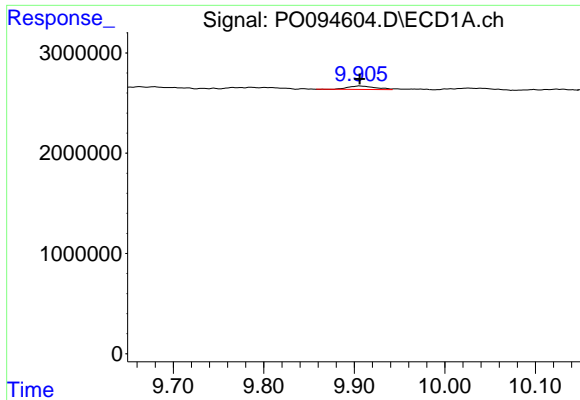
#44 AR-1268-4

R.T.: 9.481 min  
 Delta R.T.: 0.000 min  
 Response: 62823  
 Conc: 0.67 ng/ml



#44 AR-1268-4

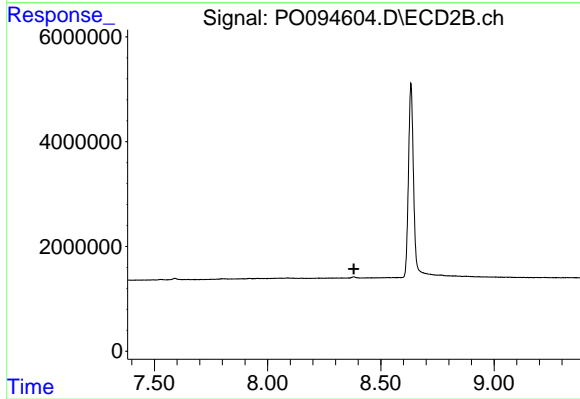
R.T.: 0.000 min  
 Exp R.T. : 8.089 min  
 Response: 0  
 Conc: N.D.



#45 AR-1268-5

R.T.: 9.906 min  
 Delta R.T.: 0.000 min  
 Response: 712627  
 Conc: 0.85 ng/ml

Instrument :  
 ECD\_O  
 ClientSampleId :



#45 AR-1268-5

R.T.: 0.000 min  
 Exp R.T. : 8.381 min  
 Response: 0  
 Conc: N.D.