

Data Path : Z:\pestpcbsrv\HPCHEM1\ECD_O\Data\P0042825\
 Data File : PO110813.D
 Signal(s) : Signal #1: ECD1A.ch Signal #2: ECD2B.ch
 Acq On : 28 Apr 2025 19:58
 Operator : YP/AJ
 Sample : AR1660CCC500
 Misc :
 ALS Vial : 3 Sample Multiplier: 1

Instrument :
 ECD_O
 ClientSampleId :

Integration File signal 1: autoint1.e
 Integration File signal 2: autoint2.e
 Quant Time: Apr 29 01:02:53 2025
 Quant Method : Z:\pestpcbsrv\HPCHEM1\ECD_O\methods\P0041025.M
 Quant Title : GC EXTRACTABLES
 QLast Update : Fri Apr 11 02:12:41 2025
 Response via : Initial Calibration
 Integrator: ChemStation

Volume Inj. : 2 µl
 Signal #1 Phase : ZB-MR1 Signal #2 Phase: ZB-MR2
 Signal #1 Info : 30Mx0.32mmx 0.50µ Signal #2 Info : 30M x 0.32mm x 0.25µm

Compound	RT#1	RT#2	Resp#1	Resp#2	ng/ml	ng/ml

System Monitoring Compounds						
1) SA Tetrachlo...	3.685	3.683	460.4E6	248.1E6	52.624	49.722
2) SA Decachlor...	8.727	8.678	337.1E6	81050732	42.701	42.104
Target Compounds						
3) L1 AR-1016-1	4.775	4.762	171.5E6	84755657	522.610	482.912
4) L1 AR-1016-2	4.794	4.781	238.0E6	121.1E6	523.191	481.531
5) L1 AR-1016-3	4.851	4.956	163.4E6	62815104	506.553	462.860
6) L1 AR-1016-4	4.971	4.998	129.1E6	48729123	518.255	426.074
7) L1 AR-1016-5	5.228	5.211	153.0E6	74020735	568.776	496.537
8) L2 AR-1221-1	3.896	3.891	18192089	9635559	154.125	144.305
9) L2 AR-1221-2	3.984	3.978	26330643	13970464	298.048	278.872
10) L2 AR-1221-3	4.060	4.053	92475347	49267336	351.451	330.276
11) L3 AR-1232-1	4.060	4.053	92475347	49267336	451.488	428.322
12) L3 AR-1232-2	4.553	4.781	124.8E6	121.1E6	1169.812	1092.181
13) L3 AR-1232-3	4.794	4.956	238.0E6	62815104	1191.427	1098.106
14) L3 AR-1232-4	4.971	5.040	129.1E6	63761210	1262.296	1181.784
15) L3 AR-1232-5	5.013	5.211	96217532	74020735	1396.433	1295.521
16) L4 AR-1242-1	4.775	4.762	171.5E6	84755657	617.912	566.918
17) L4 AR-1242-2	4.794	4.781	238.0E6	121.1E6	617.007	567.521
18) L4 AR-1242-3	4.851	4.956	163.4E6	62815104	587.261	543.466
19) L4 AR-1242-4	4.971	5.040	129.1E6	63761210	610.931	530.904
20) L4 AR-1242-5	5.624	5.562	46690394	69983502	206.236	482.323 #
21) L5 AR-1248-1	4.775	4.762	171.5E6	84755657	805.742	736.161
22) L5 AR-1248-2	5.013	4.998	96217532	48729123	325.142	299.167
23) L5 AR-1248-3	5.228	5.040	153.0E6	63761210	413.576	362.576
24) L5 AR-1248-4	5.583	5.211	146.3E6	74020735	281.315	363.419 #
25) L5 AR-1248-5	5.624	5.602	46690394	20064092	126.386	101.644
26) L6 AR-1254-1	5.583	5.562	146.3E6	69983502	262.178	232.118
27) L6 AR-1254-2	5.732	5.709	112.0E6	50817416	230.659	191.992
28) L6 AR-1254-3	6.153	6.127	181.0E6	86443343	231.114	214.278
29) L6 AR-1254-4	6.366	6.339	29475582	12453780	60.450	54.215
30) L6 AR-1254-5	6.785	6.756	301.4E6	136.3E6	430.020	410.074
31) L7 AR-1260-1	6.269	6.242	238.8E6	113.8E6	505.510	462.681
32) L7 AR-1260-2	6.458	6.430	283.8E6	132.0E6	483.876	452.585
33) L7 AR-1260-3	6.825	6.583	237.1E6	120.0E6	481.124	442.884
34) L7 AR-1260-4	7.085	7.053	203.9E6	89331453	480.469	445.232
35) L7 AR-1260-5	7.327	7.294	497.0E6	202.6E6	476.276	441.431
36) L8 AR-1262-1	6.825	6.795	237.1E6	106.3E6	338.057	322.869
37) L8 AR-1262-2	7.327	7.294	497.0E6	202.6E6	411.497	398.370
38) L8 AR-1262-3	7.611	7.577	109.1E6	42851633	214.257	221.306
39) L8 AR-1262-4	7.674	7.639	341.6E6	130.6E6	381.090	376.439
40) L8 AR-1262-5	8.171	8.133	121.4E6	37199405	301.159	298.563
41) L9 AR-1268-1	7.611	7.577	109.1E6	42851633	77.682	78.233

Data Path : Z:\pestpcbsrv\HPCHEM1\ECD_0\Data\P0042825\
 Data File : P0110813.D
 Signal(s) : Signal #1: ECD1A.ch Signal #2: ECD2B.ch
 Acq On : 28 Apr 2025 19:58
 Operator : YP/AJ
 Sample : AR1660CCC500
 Misc :
 ALS Vial : 3 Sample Multiplier: 1

Instrument :
 ECD_0
 ClientSampleId :

Integration File signal 1: autoint1.e
 Integration File signal 2: autoint2.e
 Quant Time: Apr 29 01:02:53 2025
 Quant Method : Z:\pestpcbsrv\HPCHEM1\ECD_0\methods\P0041025.M
 Quant Title : GC EXTRACTABLES
 QLast Update : Fri Apr 11 02:12:41 2025
 Response via : Initial Calibration
 Integrator: ChemStation

Volume Inj. : 2 µl
 Signal #1 Phase : ZB-MR1 Signal #2 Phase: ZB-MR2
 Signal #1 Info : 30Mx0.32mmx 0.50µ Signal #2 Info : 30M x 0.32mm x 0.25µm

	Compound	RT#1	RT#2	Resp#1	Resp#2	ng/ml	ng/ml
42)	L9 AR-1268-2	7.674	7.639	341.6E6	130.6E6	266.898	262.607
43)	L9 AR-1268-3	7.883	7.846	5454989	2155844	5.230	5.802
44)	L9 AR-1268-4	8.171	8.133	121.4E6	37199405	273.249	263.567
45)	L9 AR-1268-5	8.467	8.424	34997369	9806169	10.869	12.457

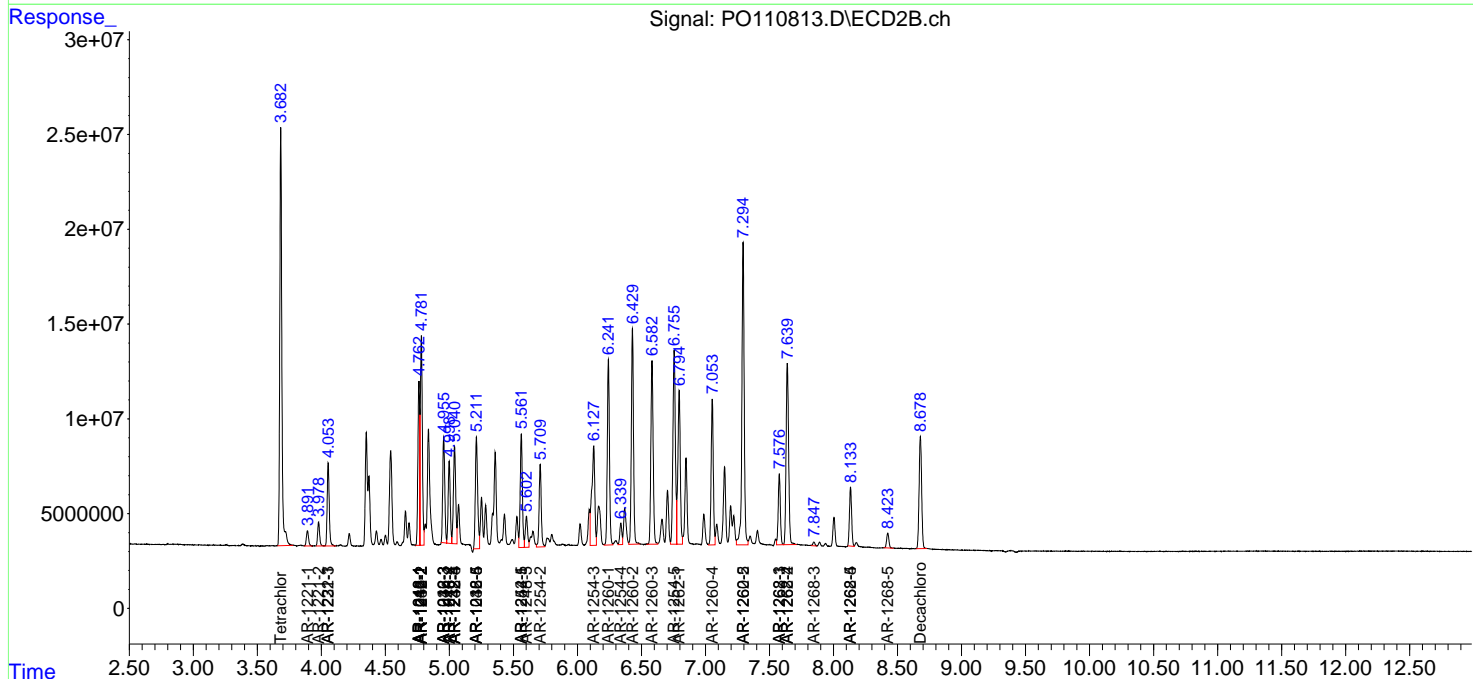
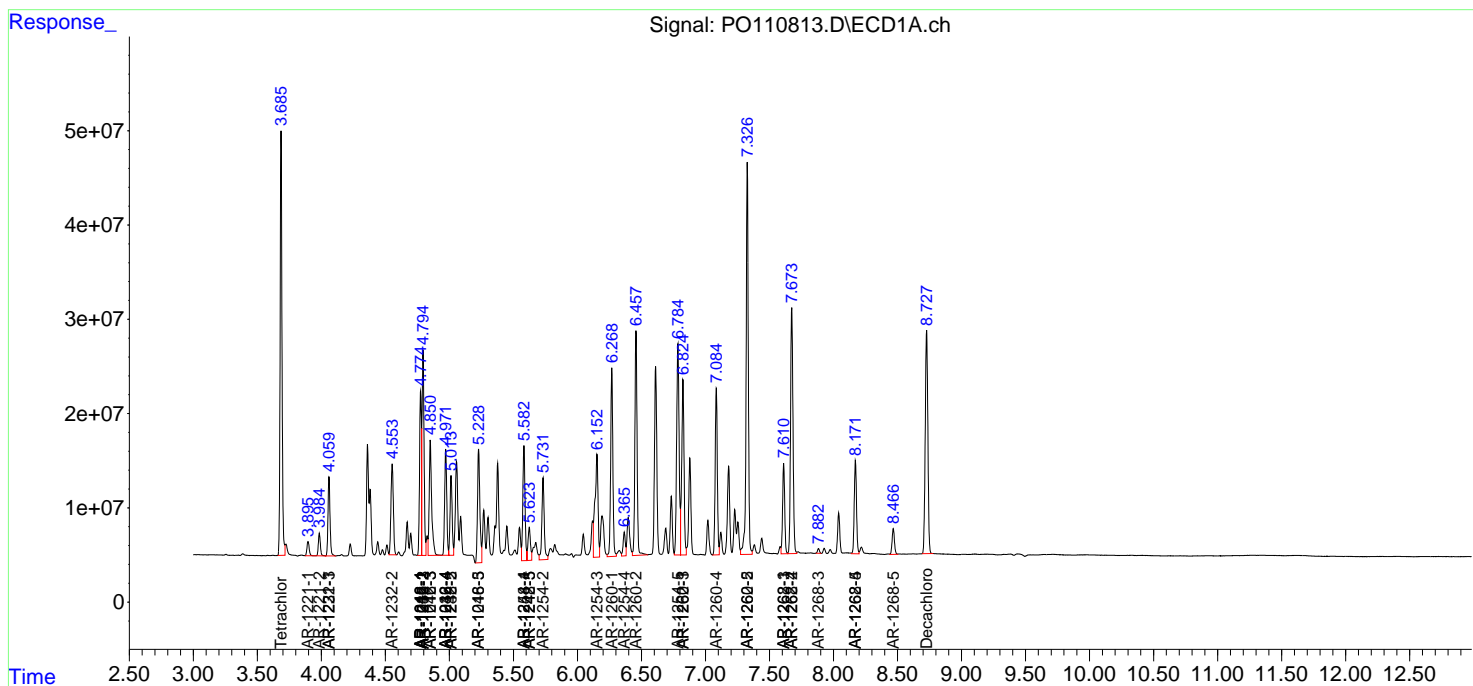
(f)=RT Delta > 1/2 Window (#)=Amounts differ by > 25% (m)=manual int.

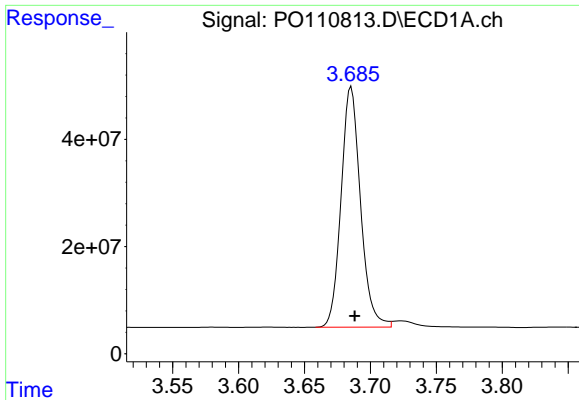
Data Path : Z:\pestpcbsrv\HPCHEM1\ECD_O\Data\PO042825\
 Data File : PO110813.D
 Signal(s) : Signal #1: ECD1A.ch Signal #2: ECD2B.ch
 Acq On : 28 Apr 2025 19:58
 Operator : YP/AJ
 Sample : AR1660CCC500
 Misc :
 ALS Vial : 3 Sample Multiplier: 1

Instrument :
 ECD_O
 ClientSampleId :

Integration File signal 1: autoint1.e
 Integration File signal 2: autoint2.e
 Quant Time: Apr 29 01:02:53 2025
 Quant Method : Z:\pestpcbsrv\HPCHEM1\ECD_O\methods\PO041025.M
 Quant Title : GC EXTRACTABLES
 QLast Update : Fri Apr 11 02:12:41 2025
 Response via : Initial Calibration
 Integrator: ChemStation

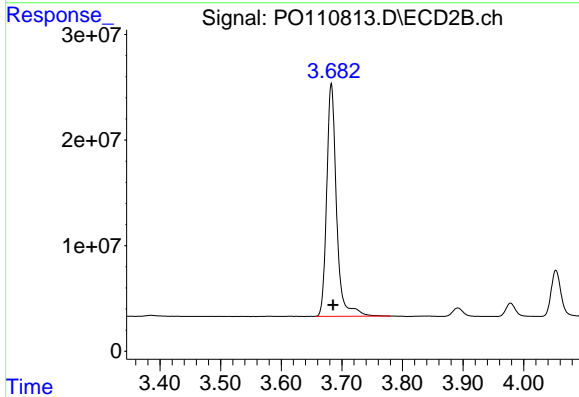
Volume Inj. : 2 µl
 Signal #1 Phase : ZB-MR1 Signal #2 Phase: ZB-MR2
 Signal #1 Info : 30Mx0.32mmx 0.50µ Signal #2 Info : 30M x 0.32mm x 0.25µm



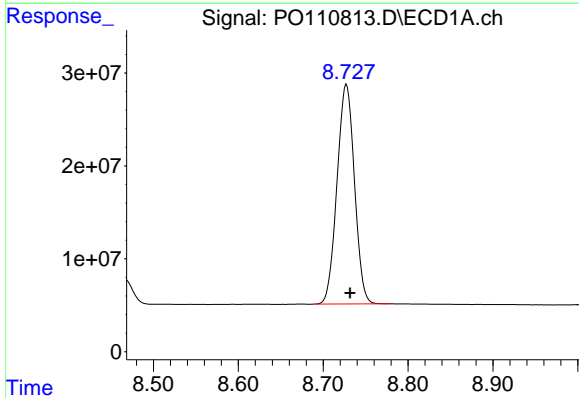


#1 Tetrachloro-m-xylene
 R.T.: 3.685 min
 Delta R.T.: -0.003 min
 Response: 460408261
 Conc: 52.62 ng/ml

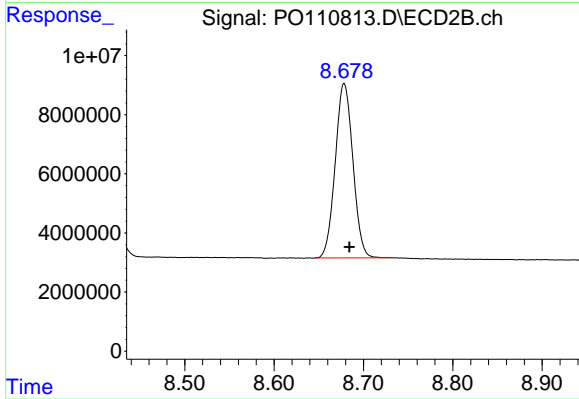
Instrument :
 ECD_O
 ClientSampleId :



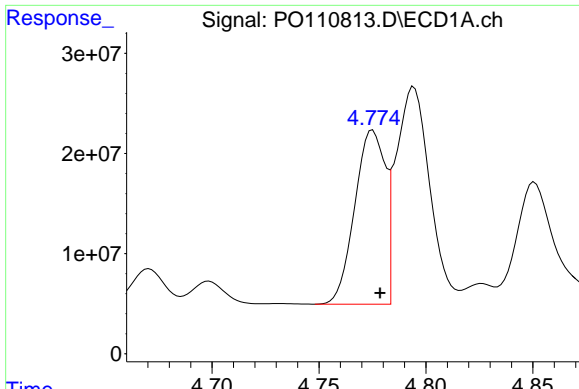
#1 Tetrachloro-m-xylene
 R.T.: 3.683 min
 Delta R.T.: -0.003 min
 Response: 248101525
 Conc: 49.72 ng/ml



#2 Decachlorobiphenyl
 R.T.: 8.727 min
 Delta R.T.: -0.004 min
 Response: 337121035
 Conc: 42.70 ng/ml



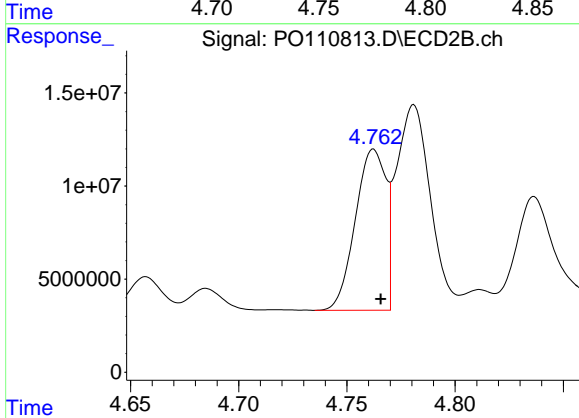
#2 Decachlorobiphenyl
 R.T.: 8.678 min
 Delta R.T.: -0.006 min
 Response: 81050732
 Conc: 42.10 ng/ml



#3 AR-1016-1

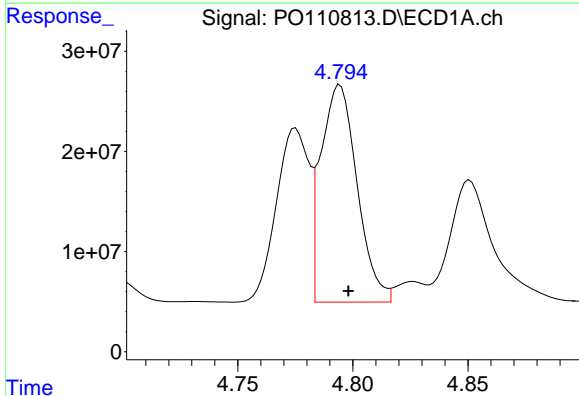
R.T.: 4.775 min
 Delta R.T.: -0.003 min
 Response: 171491229
 Conc: 522.61 ng/ml

Instrument :
 ECD_O
 ClientSampleId :



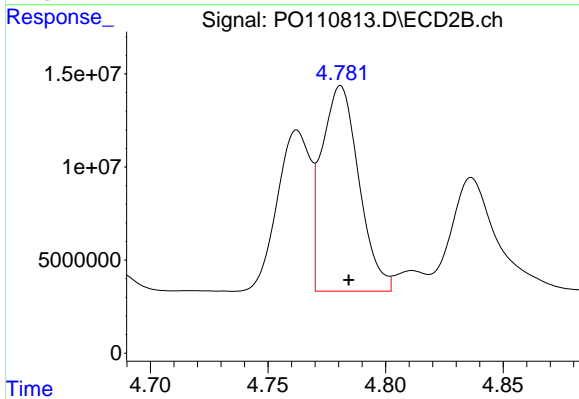
#3 AR-1016-1

R.T.: 4.762 min
 Delta R.T.: -0.003 min
 Response: 84755657
 Conc: 482.91 ng/ml



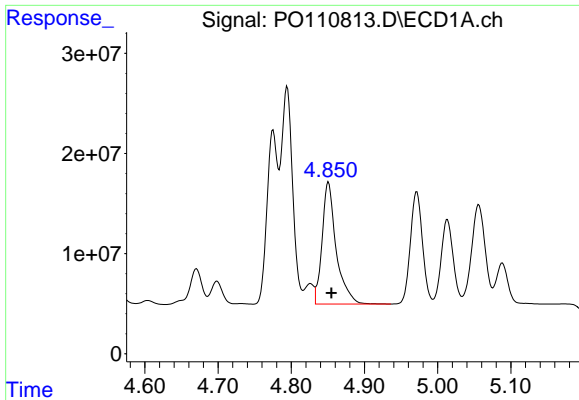
#4 AR-1016-2

R.T.: 4.794 min
 Delta R.T.: -0.004 min
 Response: 238024959
 Conc: 523.19 ng/ml



#4 AR-1016-2

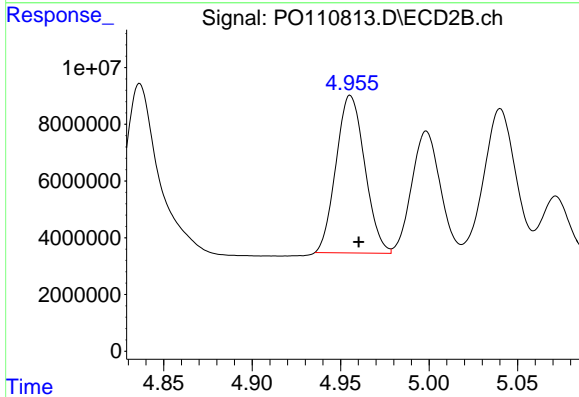
R.T.: 4.781 min
 Delta R.T.: -0.003 min
 Response: 121088109
 Conc: 481.53 ng/ml



#5 AR-1016-3

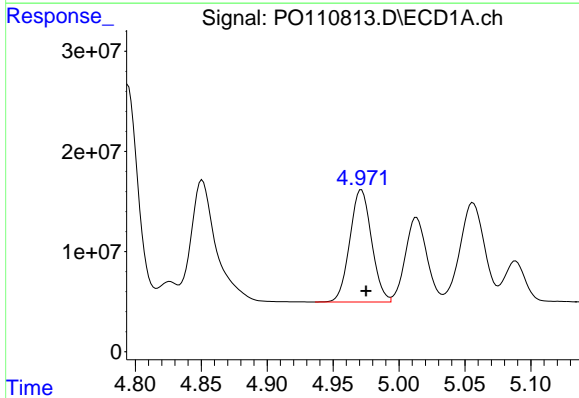
R.T.: 4.851 min
 Delta R.T.: -0.004 min
 Response: 163377175
 Conc: 506.55 ng/ml

Instrument :
 ECD_O
 ClientSampleId :



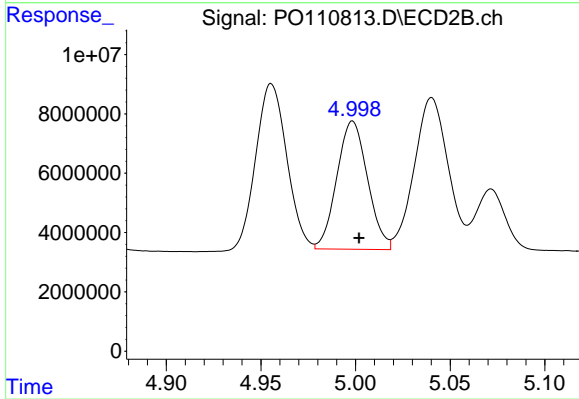
#5 AR-1016-3

R.T.: 4.956 min
 Delta R.T.: -0.005 min
 Response: 62815104
 Conc: 462.86 ng/ml



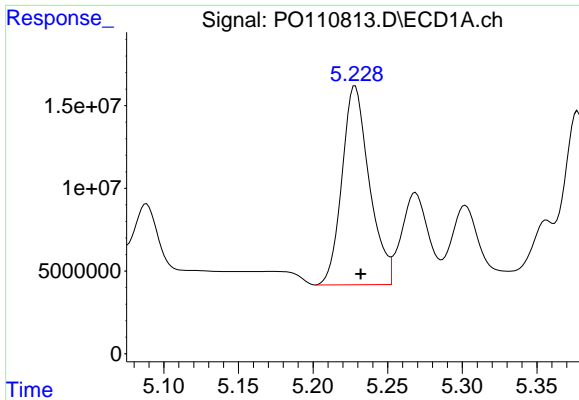
#6 AR-1016-4

R.T.: 4.971 min
 Delta R.T.: -0.003 min
 Response: 129130826
 Conc: 518.26 ng/ml



#6 AR-1016-4

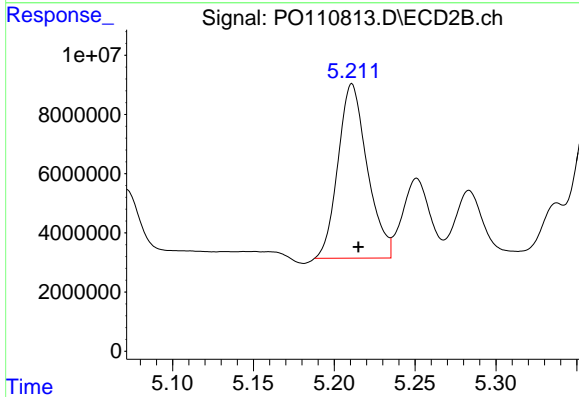
R.T.: 4.998 min
 Delta R.T.: -0.003 min
 Response: 48729123
 Conc: 426.07 ng/ml



#7 AR-1016-5

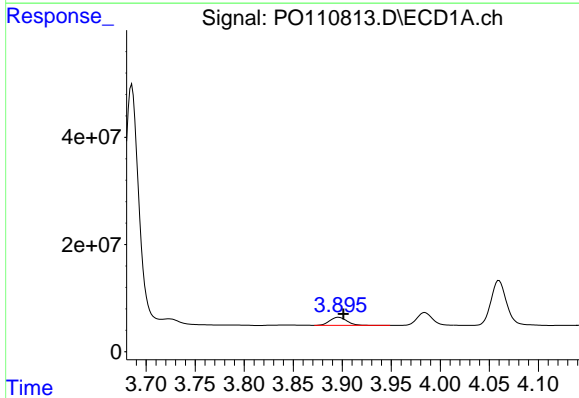
R.T.: 5.228 min
 Delta R.T.: -0.004 min
 Response: 153007235
 Conc: 568.78 ng/ml

Instrument :
 ECD_O
 ClientSampleId :



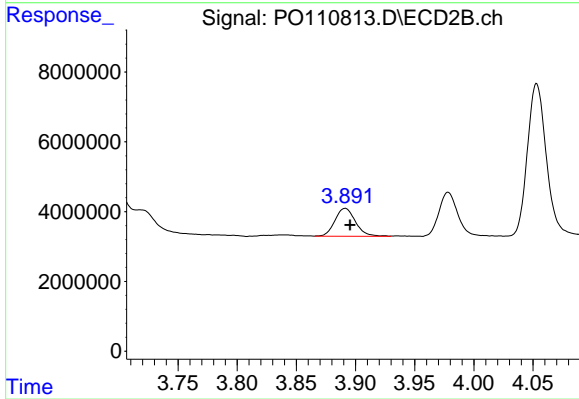
#7 AR-1016-5

R.T.: 5.211 min
 Delta R.T.: -0.004 min
 Response: 74020735
 Conc: 496.54 ng/ml



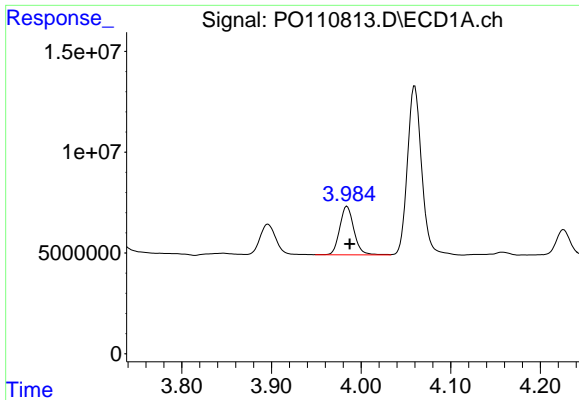
#8 AR-1221-1

R.T.: 3.896 min
 Delta R.T.: -0.005 min
 Response: 18192089
 Conc: 154.12 ng/ml



#8 AR-1221-1

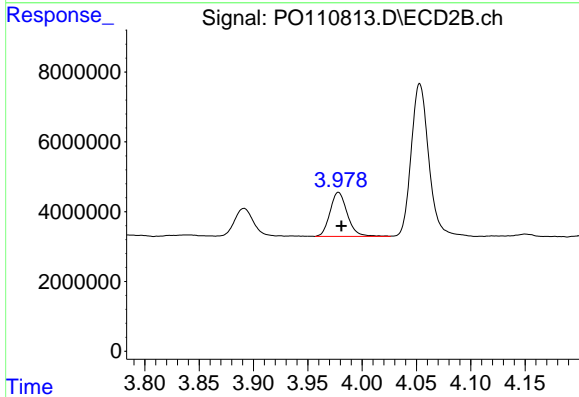
R.T.: 3.891 min
 Delta R.T.: -0.004 min
 Response: 9635559
 Conc: 144.30 ng/ml



#9 AR-1221-2

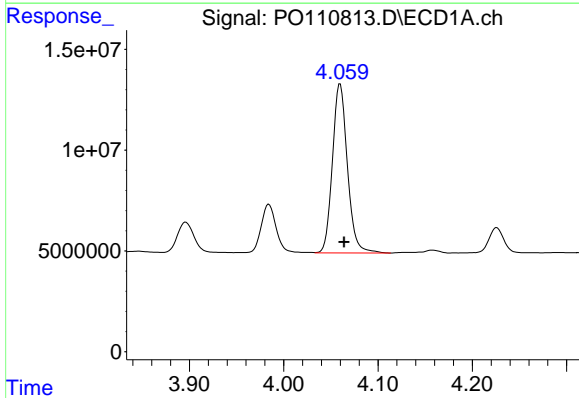
R.T.: 3.984 min
 Delta R.T.: -0.003 min
 Response: 26330643
 Conc: 298.05 ng/ml

Instrument :
 ECD_O
 ClientSampleId :



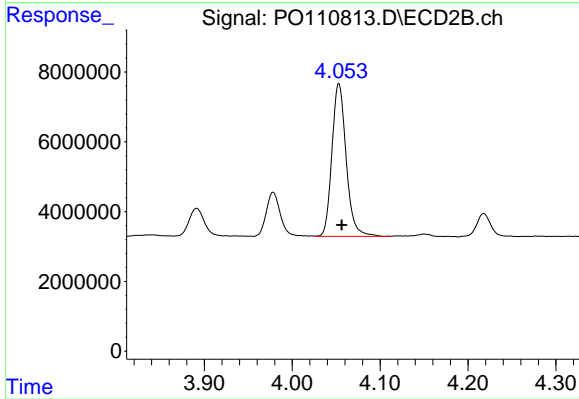
#9 AR-1221-2

R.T.: 3.978 min
 Delta R.T.: -0.003 min
 Response: 13970464
 Conc: 278.87 ng/ml



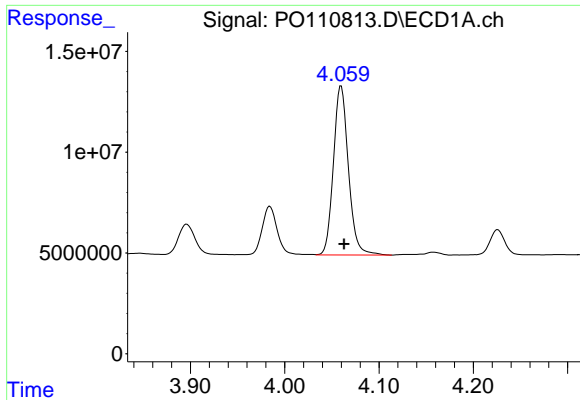
#10 AR-1221-3

R.T.: 4.060 min
 Delta R.T.: -0.004 min
 Response: 92475347
 Conc: 351.45 ng/ml



#10 AR-1221-3

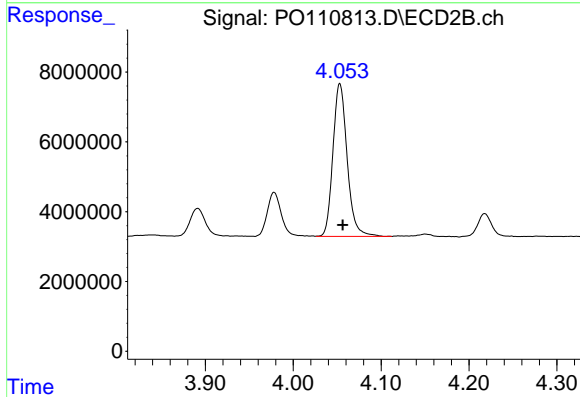
R.T.: 4.053 min
 Delta R.T.: -0.003 min
 Response: 49267336
 Conc: 330.28 ng/ml



#11 AR-1232-1

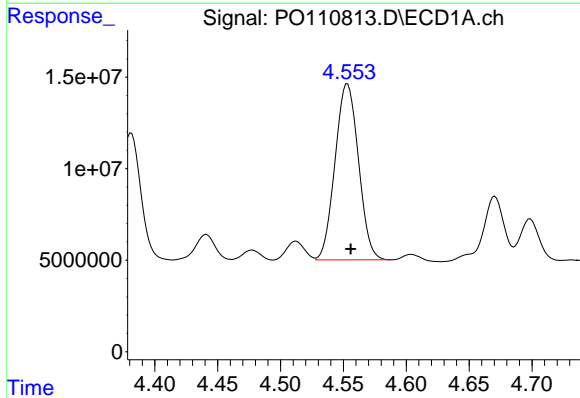
R.T.: 4.060 min
 Delta R.T.: -0.003 min
 Response: 92475347
 Conc: 451.49 ng/ml

Instrument :
 ECD_O
 ClientSampleId :



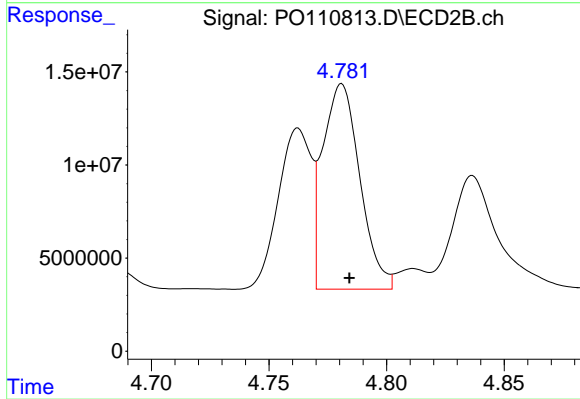
#11 AR-1232-1

R.T.: 4.053 min
 Delta R.T.: -0.003 min
 Response: 49267336
 Conc: 428.32 ng/ml



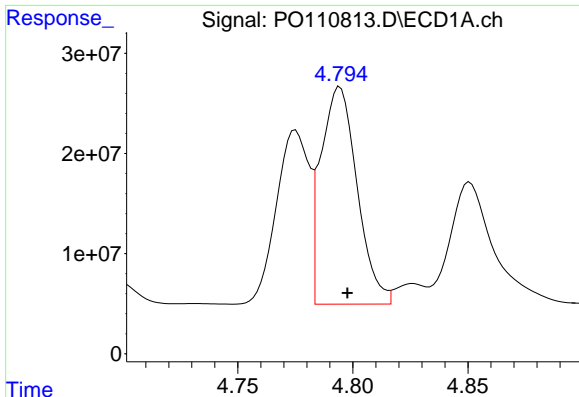
#12 AR-1232-2

R.T.: 4.553 min
 Delta R.T.: -0.003 min
 Response: 124829010
 Conc: 1169.81 ng/ml



#12 AR-1232-2

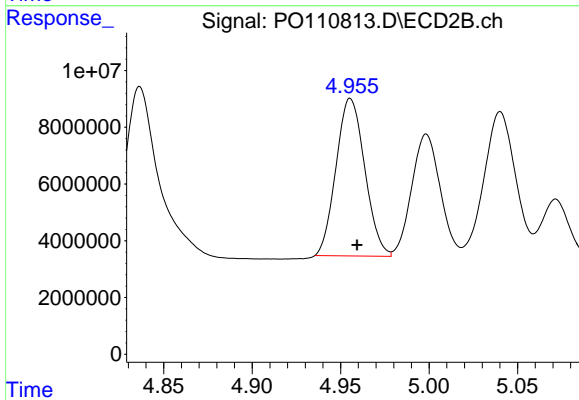
R.T.: 4.781 min
 Delta R.T.: -0.003 min
 Response: 121088109
 Conc: 1092.18 ng/ml



#13 AR-1232-3

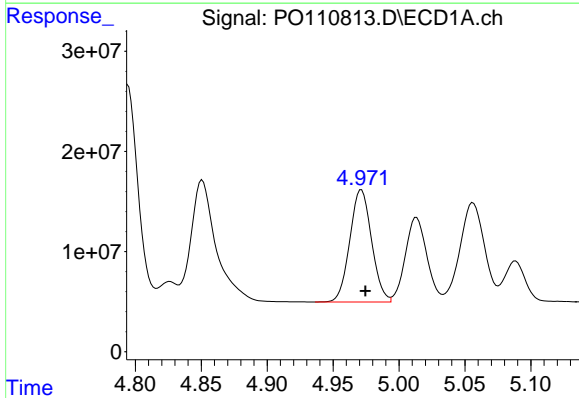
R.T.: 4.794 min
 Delta R.T.: -0.003 min
 Response: 238024959
 Conc: 1191.43 ng/m

Instrument :
 ECD_O
 ClientSampleId :



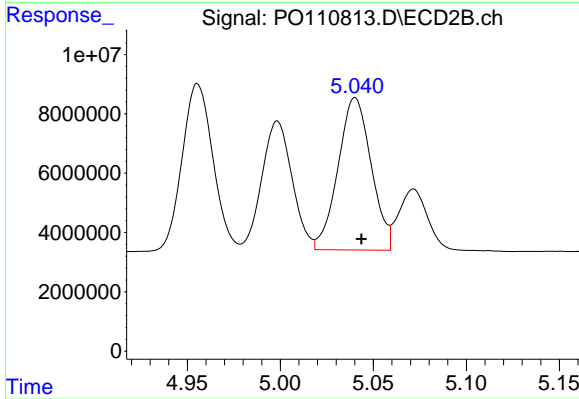
#13 AR-1232-3

R.T.: 4.956 min
 Delta R.T.: -0.004 min
 Response: 62815104
 Conc: 1098.11 ng/ml



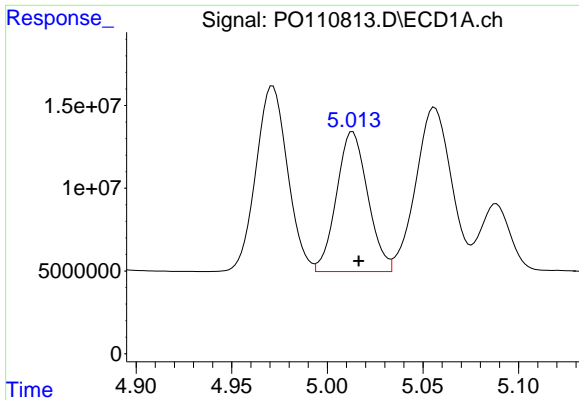
#14 AR-1232-4

R.T.: 4.971 min
 Delta R.T.: -0.003 min
 Response: 129130826
 Conc: 1262.30 ng/ml



#14 AR-1232-4

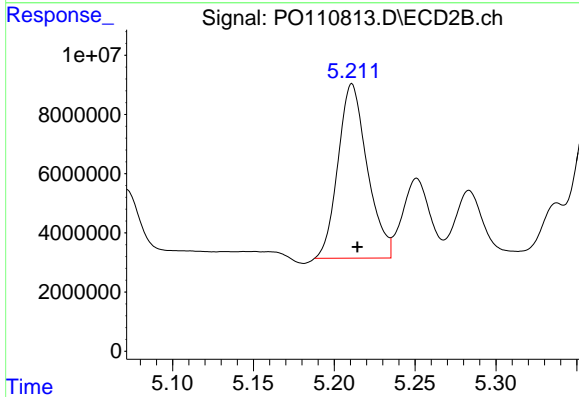
R.T.: 5.040 min
 Delta R.T.: -0.003 min
 Response: 63761210
 Conc: 1181.78 ng/ml



#15 AR-1232-5

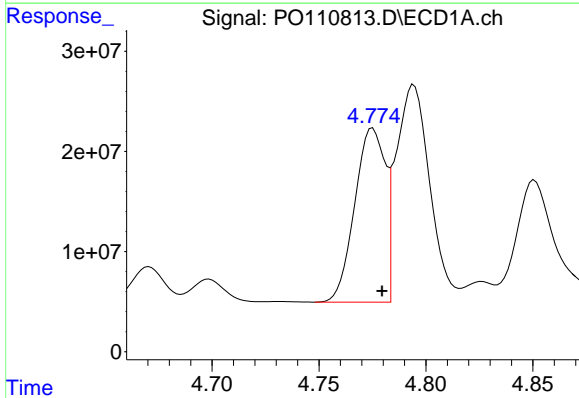
R.T.: 5.013 min
 Delta R.T.: -0.003 min
 Response: 96217532
 Conc: 1396.43 ng/ml

Instrument :
 ECD_O
 ClientSampleId :



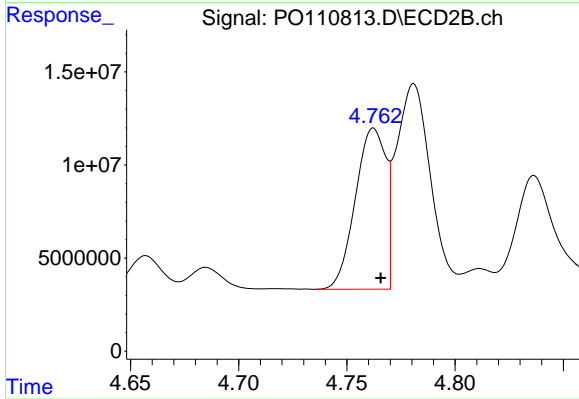
#15 AR-1232-5

R.T.: 5.211 min
 Delta R.T.: -0.003 min
 Response: 74020735
 Conc: 1295.52 ng/ml



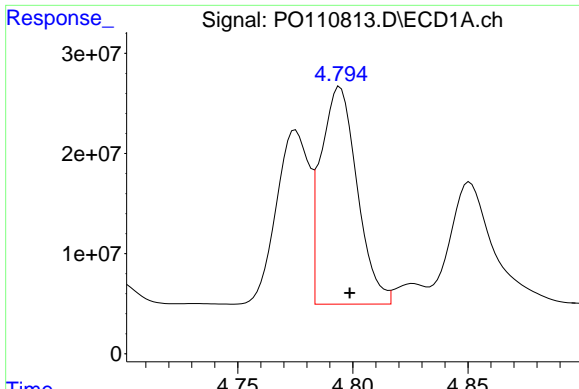
#16 AR-1242-1

R.T.: 4.775 min
 Delta R.T.: -0.004 min
 Response: 171491229
 Conc: 617.91 ng/ml



#16 AR-1242-1

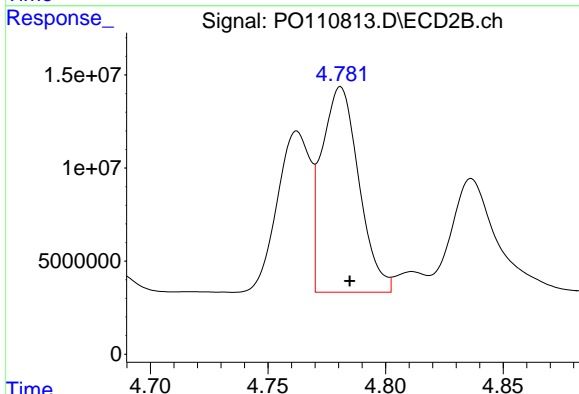
R.T.: 4.762 min
 Delta R.T.: -0.003 min
 Response: 84755657
 Conc: 566.92 ng/ml



#17 AR-1242-2

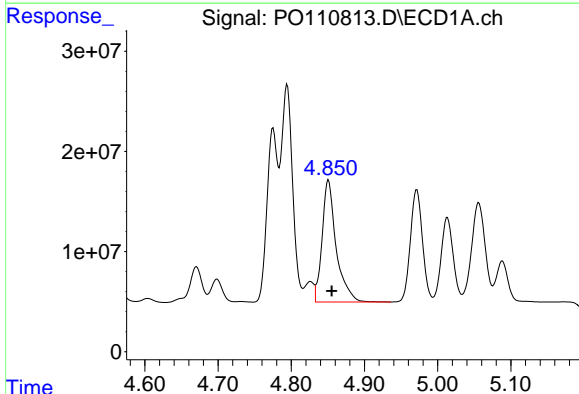
R.T.: 4.794 min
 Delta R.T.: -0.004 min
 Response: 238024959
 Conc: 617.01 ng/ml

Instrument :
 ECD_O
 ClientSampleId :



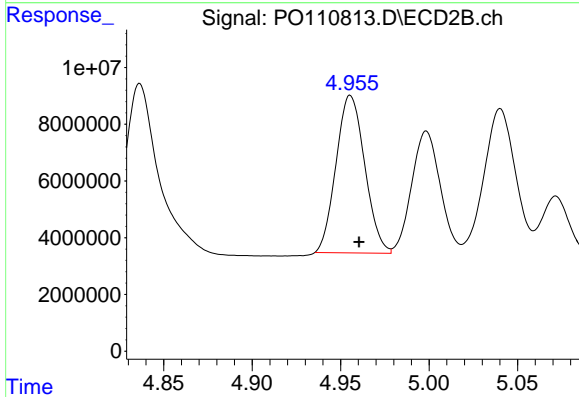
#17 AR-1242-2

R.T.: 4.781 min
 Delta R.T.: -0.004 min
 Response: 121088109
 Conc: 567.52 ng/ml



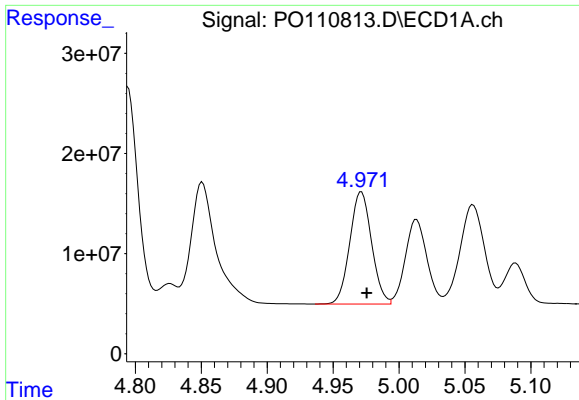
#18 AR-1242-3

R.T.: 4.851 min
 Delta R.T.: -0.004 min
 Response: 163377175
 Conc: 587.26 ng/ml



#18 AR-1242-3

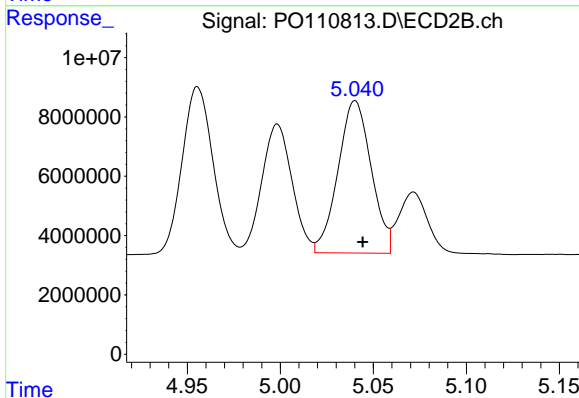
R.T.: 4.956 min
 Delta R.T.: -0.005 min
 Response: 62815104
 Conc: 543.47 ng/ml



#19 AR-1242-4

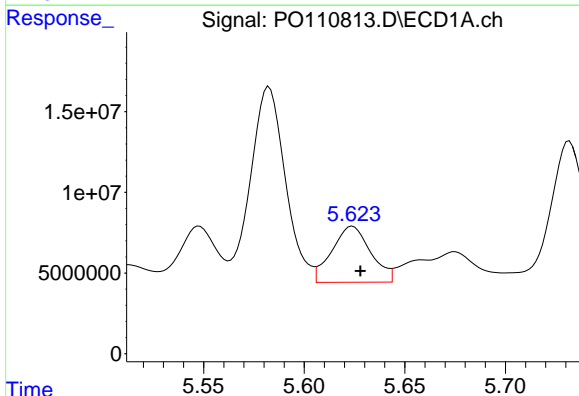
R.T.: 4.971 min
 Delta R.T.: -0.004 min
 Response: 129130826
 Conc: 610.93 ng/ml

Instrument :
 ECD_O
 ClientSampleId :



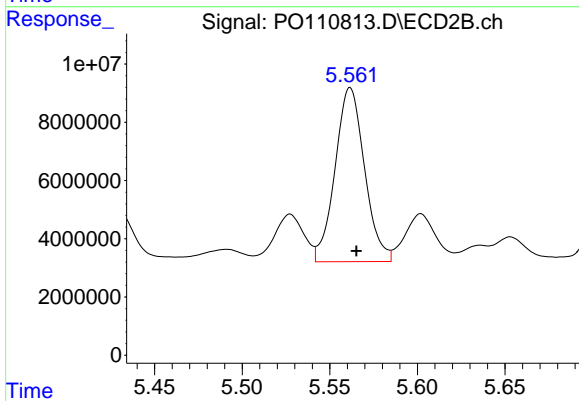
#19 AR-1242-4

R.T.: 5.040 min
 Delta R.T.: -0.004 min
 Response: 63761210
 Conc: 530.90 ng/ml



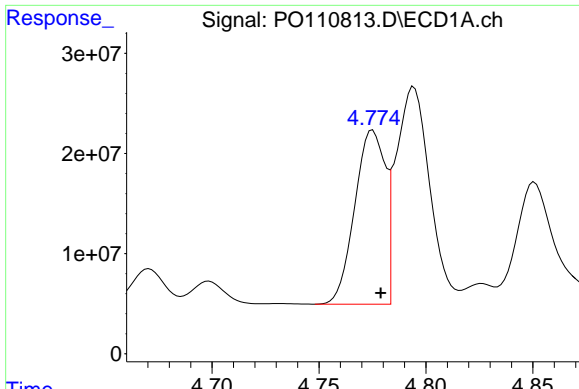
#20 AR-1242-5

R.T.: 5.624 min
 Delta R.T.: -0.004 min
 Response: 46690394
 Conc: 206.24 ng/ml



#20 AR-1242-5

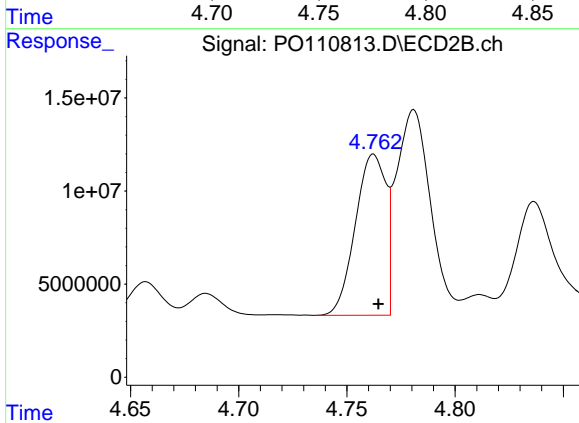
R.T.: 5.562 min
 Delta R.T.: -0.004 min
 Response: 69983502
 Conc: 482.32 ng/ml



#21 AR-1248-1

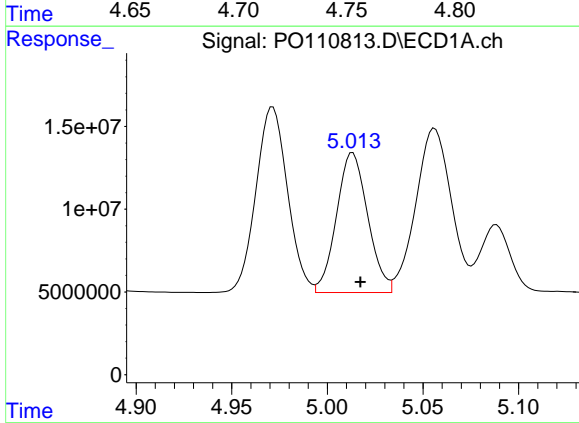
R.T.: 4.775 min
 Delta R.T.: -0.004 min
 Response: 171491229
 Conc: 805.74 ng/ml

Instrument :
 ECD_O
 ClientSampleId :



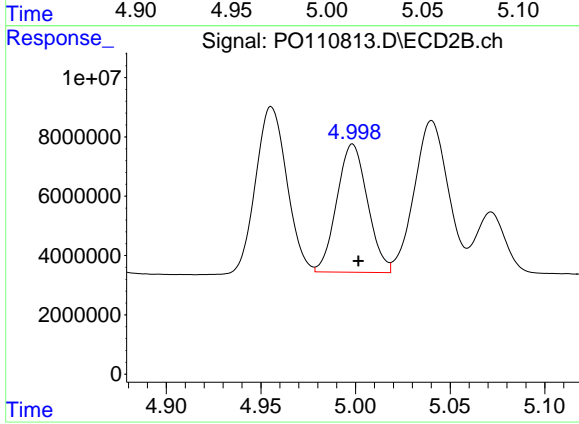
#21 AR-1248-1

R.T.: 4.762 min
 Delta R.T.: -0.002 min
 Response: 84755657
 Conc: 736.16 ng/ml



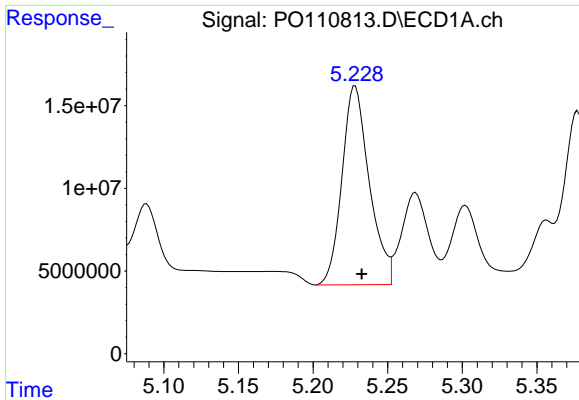
#22 AR-1248-2

R.T.: 5.013 min
 Delta R.T.: -0.004 min
 Response: 96217532
 Conc: 325.14 ng/ml



#22 AR-1248-2

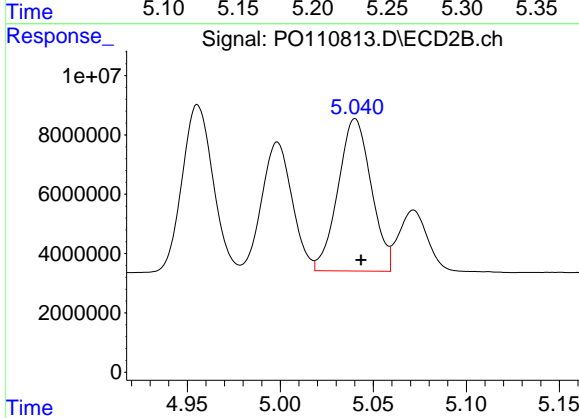
R.T.: 4.998 min
 Delta R.T.: -0.003 min
 Response: 48729123
 Conc: 299.17 ng/ml



#23 AR-1248-3

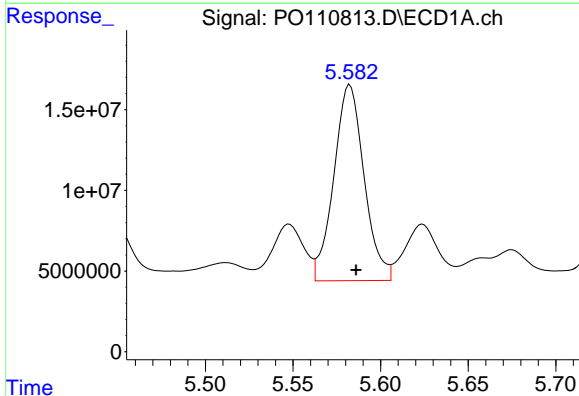
R.T.: 5.228 min
 Delta R.T.: -0.004 min
 Response: 153007235
 Conc: 413.58 ng/ml

Instrument :
 ECD_O
 ClientSampleId :



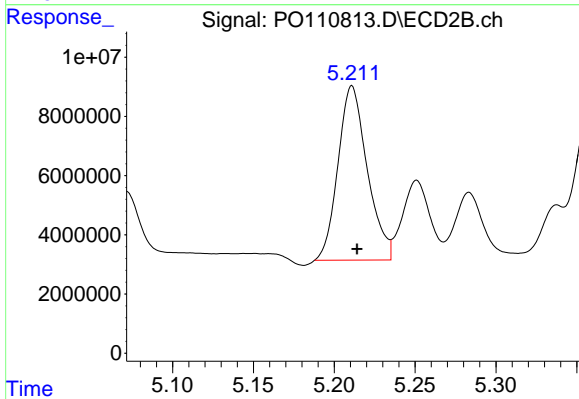
#23 AR-1248-3

R.T.: 5.040 min
 Delta R.T.: -0.003 min
 Response: 63761210
 Conc: 362.58 ng/ml



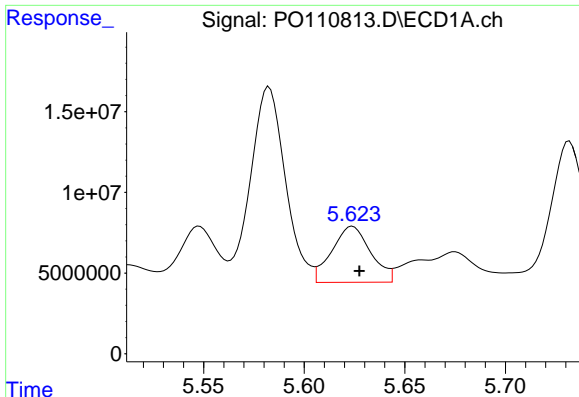
#24 AR-1248-4

R.T.: 5.583 min
 Delta R.T.: -0.003 min
 Response: 146292257
 Conc: 281.31 ng/ml



#24 AR-1248-4

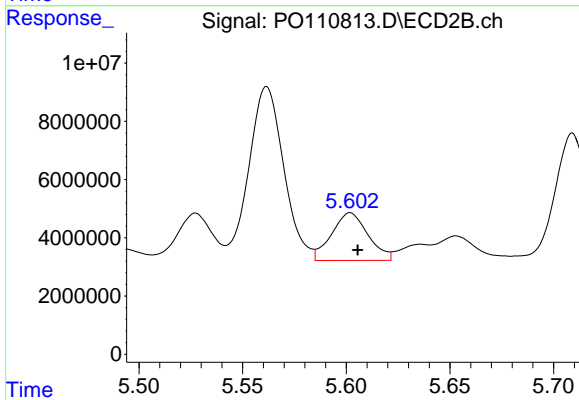
R.T.: 5.211 min
 Delta R.T.: -0.003 min
 Response: 74020735
 Conc: 363.42 ng/ml



#25 AR-1248-5

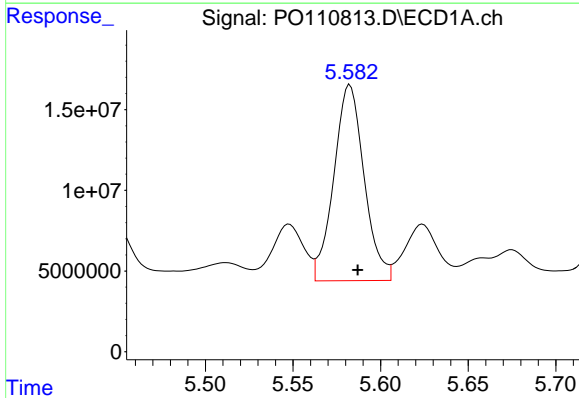
R.T.: 5.624 min
 Delta R.T.: -0.003 min
 Response: 46690394
 Conc: 126.39 ng/ml

Instrument :
 ECD_O
 ClientSampleId :



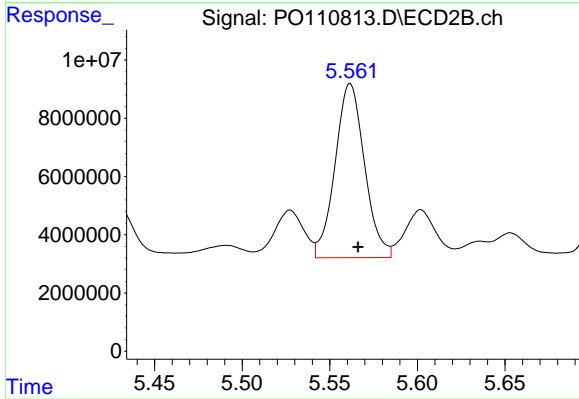
#25 AR-1248-5

R.T.: 5.602 min
 Delta R.T.: -0.004 min
 Response: 20064092
 Conc: 101.64 ng/ml



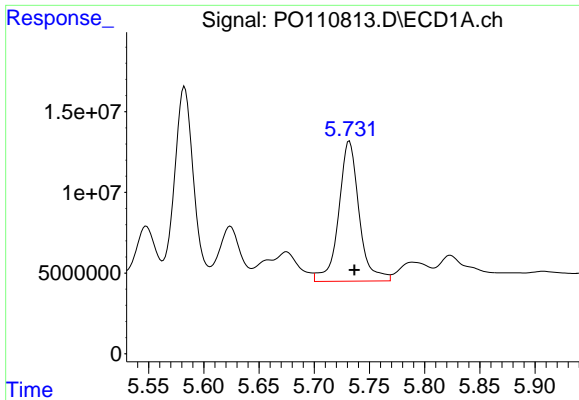
#26 AR-1254-1

R.T.: 5.583 min
 Delta R.T.: -0.004 min
 Response: 146292257
 Conc: 262.18 ng/ml



#26 AR-1254-1

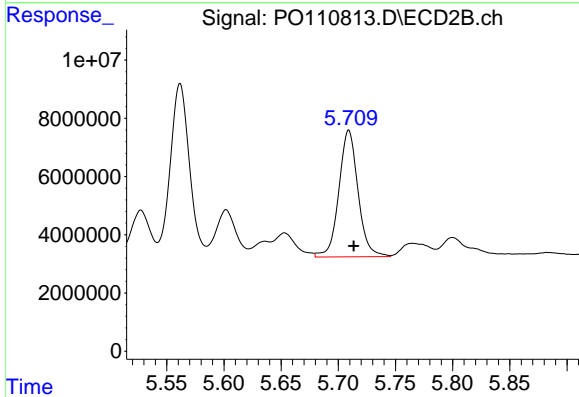
R.T.: 5.562 min
 Delta R.T.: -0.004 min
 Response: 69983502
 Conc: 232.12 ng/ml



#27 AR-1254-2

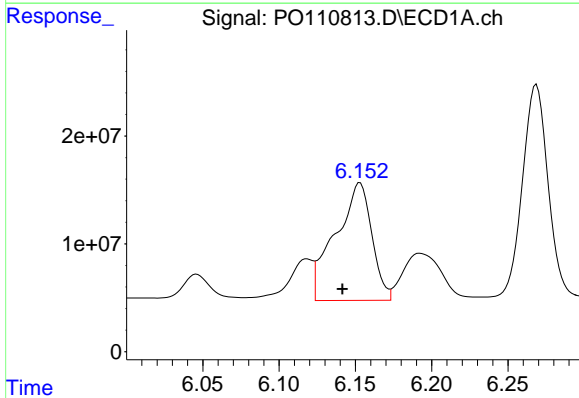
R.T.: 5.732 min
 Delta R.T.: -0.005 min
 Response: 112031884
 Conc: 230.66 ng/ml

Instrument :
 ECD_O
 ClientSampleId :



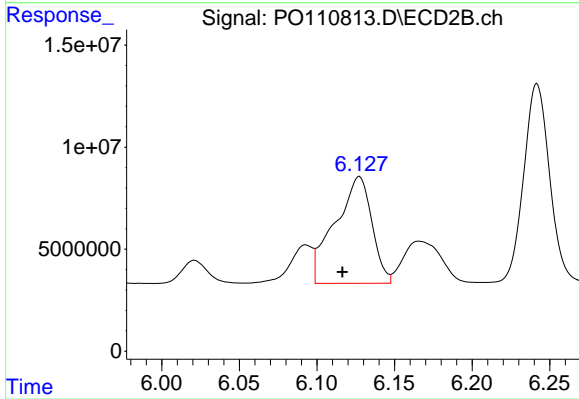
#27 AR-1254-2

R.T.: 5.709 min
 Delta R.T.: -0.004 min
 Response: 50817416
 Conc: 191.99 ng/ml



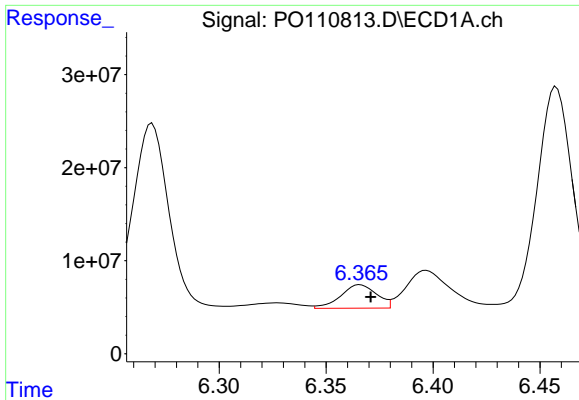
#28 AR-1254-3

R.T.: 6.153 min
 Delta R.T.: 0.012 min
 Response: 181013211
 Conc: 231.11 ng/ml



#28 AR-1254-3

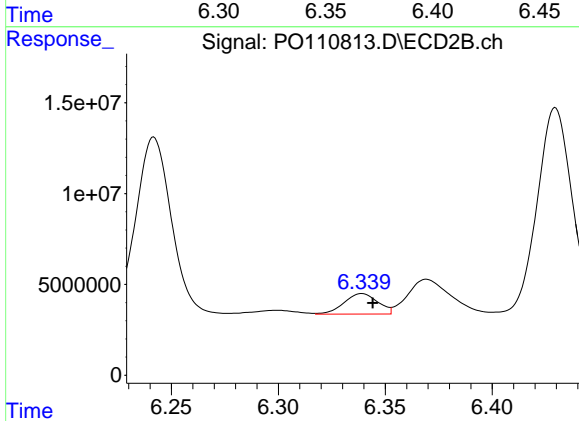
R.T.: 6.127 min
 Delta R.T.: 0.011 min
 Response: 86443343
 Conc: 214.28 ng/ml



#29 AR-1254-4

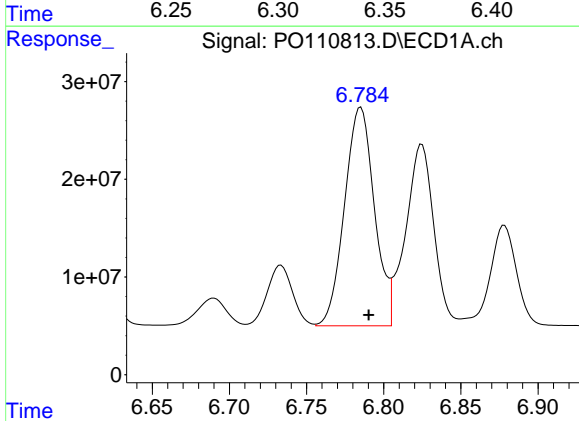
R.T.: 6.366 min
Delta R.T.: -0.005 min
Response: 29475582
Conc: 60.45 ng/ml

Instrument :
ECD_O
ClientSampleId :



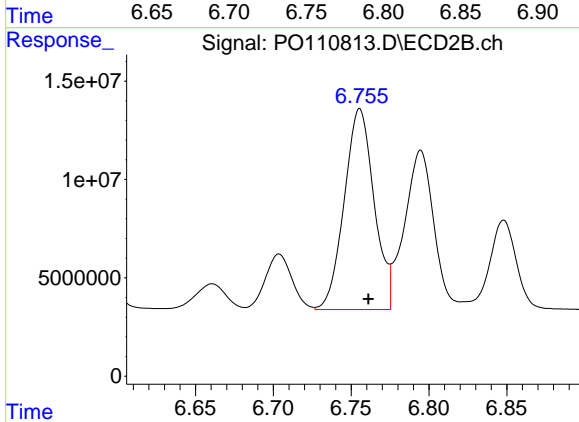
#29 AR-1254-4

R.T.: 6.339 min
Delta R.T.: -0.005 min
Response: 12453780
Conc: 54.21 ng/ml



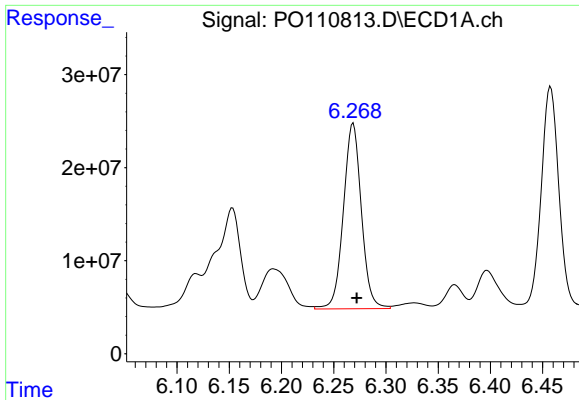
#30 AR-1254-5

R.T.: 6.785 min
Delta R.T.: -0.005 min
Response: 301400812
Conc: 430.02 ng/ml



#30 AR-1254-5

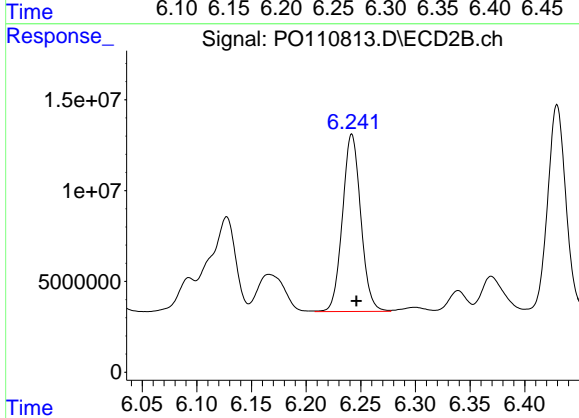
R.T.: 6.756 min
Delta R.T.: -0.005 min
Response: 136264345
Conc: 410.07 ng/ml



#31 AR-1260-1

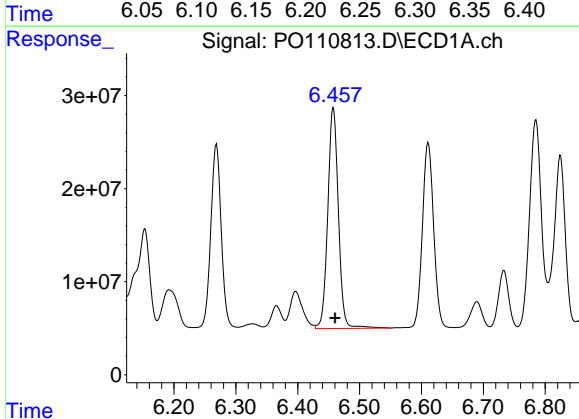
R.T.: 6.269 min
 Delta R.T.: -0.003 min
 Response: 238825767
 Conc: 505.51 ng/ml

Instrument :
 ECD_O
 ClientSampleId :



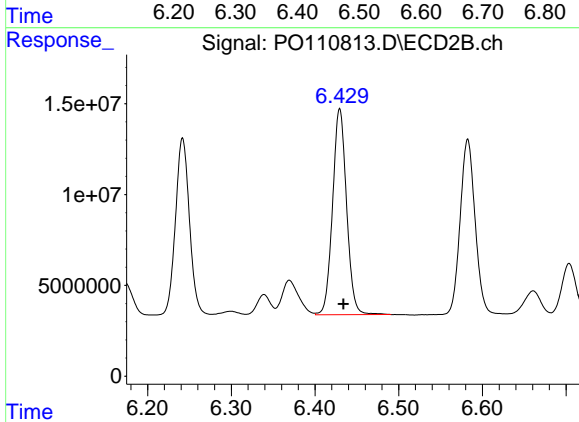
#31 AR-1260-1

R.T.: 6.242 min
 Delta R.T.: -0.004 min
 Response: 113802772
 Conc: 462.68 ng/ml



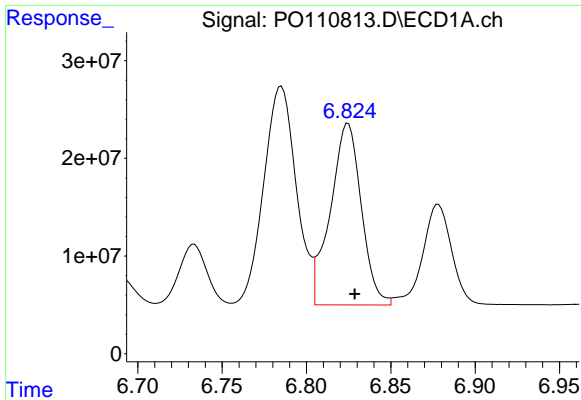
#32 AR-1260-2

R.T.: 6.458 min
 Delta R.T.: -0.003 min
 Response: 283756900
 Conc: 483.88 ng/ml



#32 AR-1260-2

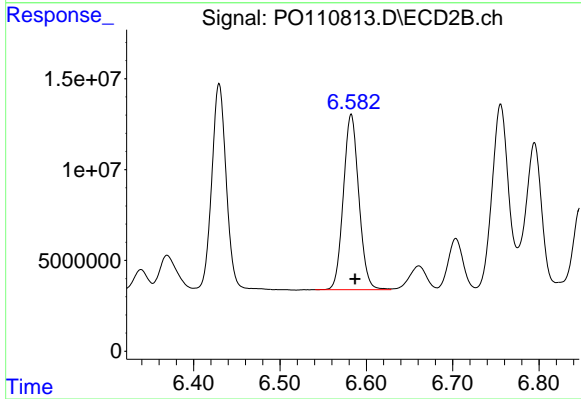
R.T.: 6.430 min
 Delta R.T.: -0.004 min
 Response: 132041957
 Conc: 452.58 ng/ml



#33 AR-1260-3

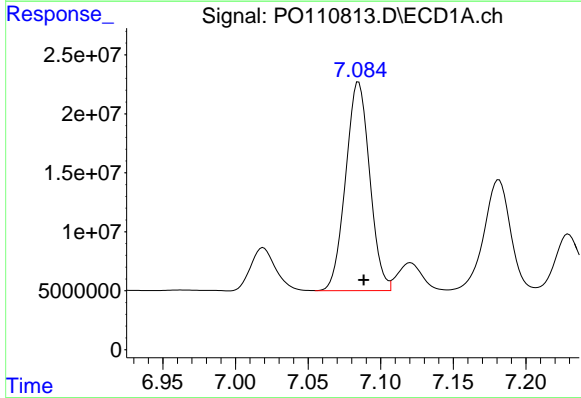
R.T.: 6.825 min
 Delta R.T.: -0.004 min
 Response: 237132880
 Conc: 481.12 ng/ml

Instrument :
 ECD_O
 ClientSampleId :



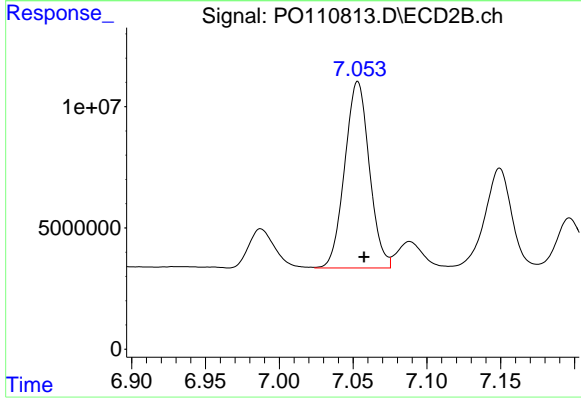
#33 AR-1260-3

R.T.: 6.583 min
 Delta R.T.: -0.004 min
 Response: 119970371
 Conc: 442.88 ng/ml



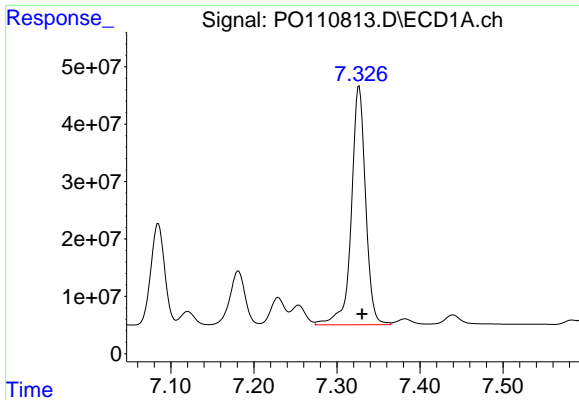
#34 AR-1260-4

R.T.: 7.085 min
 Delta R.T.: -0.003 min
 Response: 203922096
 Conc: 480.47 ng/ml



#34 AR-1260-4

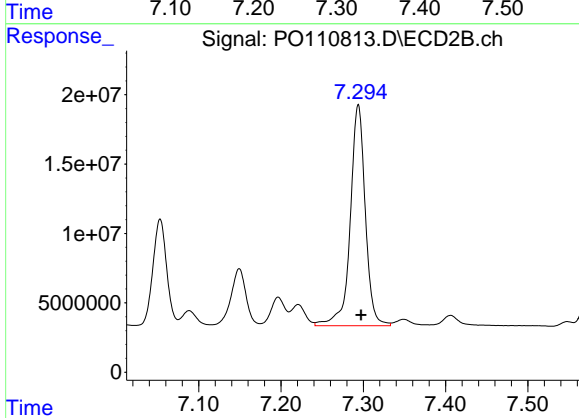
R.T.: 7.053 min
 Delta R.T.: -0.004 min
 Response: 89331453
 Conc: 445.23 ng/ml



#35 AR-1260-5

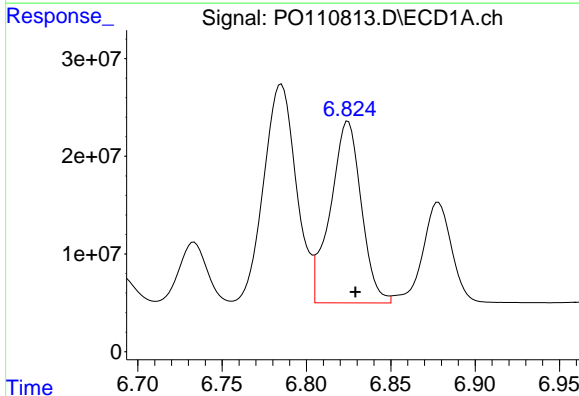
R.T.: 7.327 min
 Delta R.T.: -0.004 min
 Response: 496980121
 Conc: 476.28 ng/ml

Instrument :
 ECD_O
 ClientSampleId :



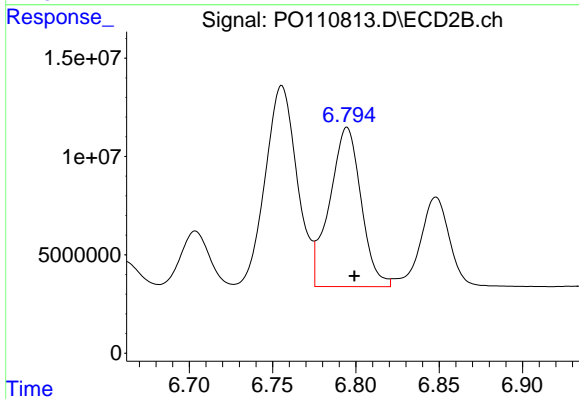
#35 AR-1260-5

R.T.: 7.294 min
 Delta R.T.: -0.003 min
 Response: 202554015
 Conc: 441.43 ng/ml



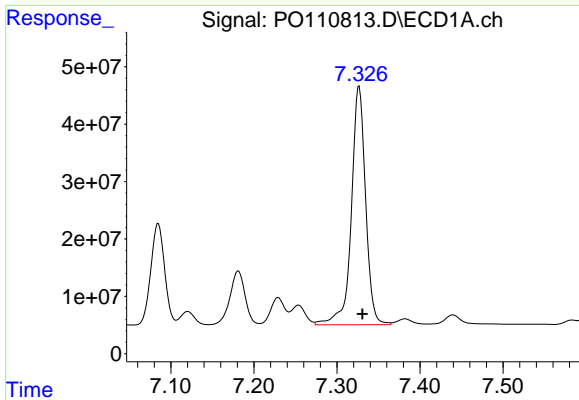
#36 AR-1262-1

R.T.: 6.825 min
 Delta R.T.: -0.004 min
 Response: 237132880
 Conc: 338.06 ng/ml



#36 AR-1262-1

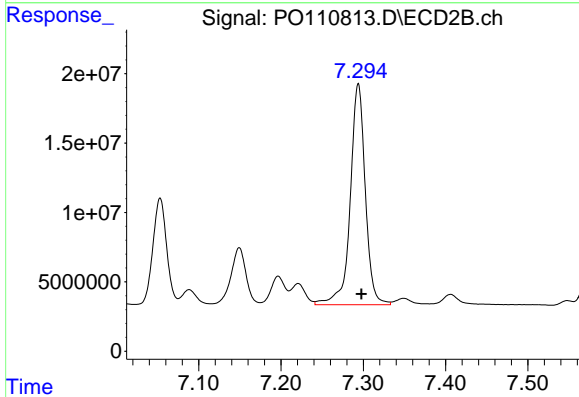
R.T.: 6.795 min
 Delta R.T.: -0.004 min
 Response: 106333474
 Conc: 322.87 ng/ml



#37 AR-1262-2

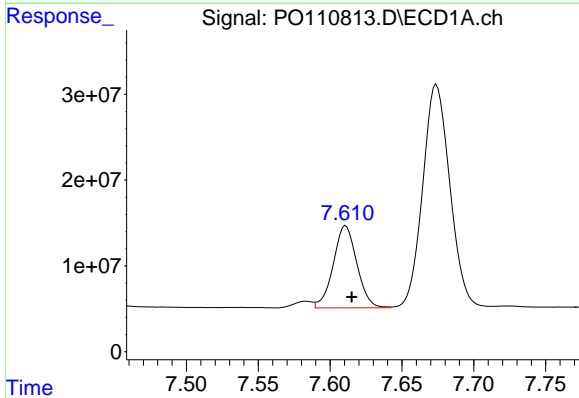
R.T.: 7.327 min
 Delta R.T.: -0.004 min
 Response: 496980121
 Conc: 411.50 ng/ml

Instrument :
 ECD_O
 ClientSampleId :



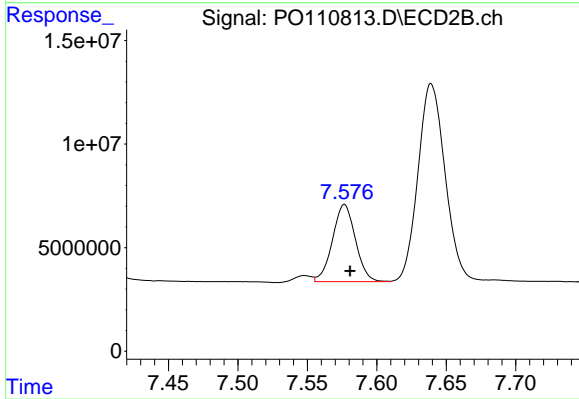
#37 AR-1262-2

R.T.: 7.294 min
 Delta R.T.: -0.004 min
 Response: 202554015
 Conc: 398.37 ng/ml



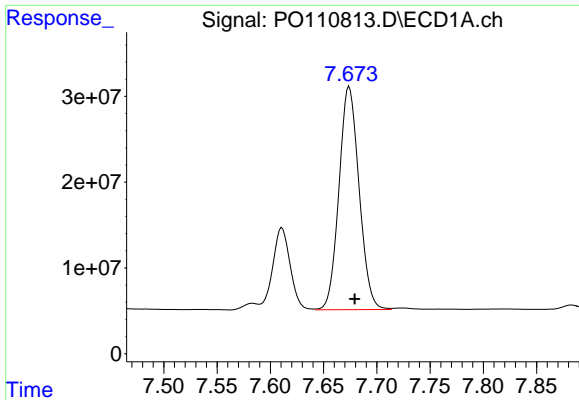
#38 AR-1262-3

R.T.: 7.611 min
 Delta R.T.: -0.004 min
 Response: 109078853
 Conc: 214.26 ng/ml



#38 AR-1262-3

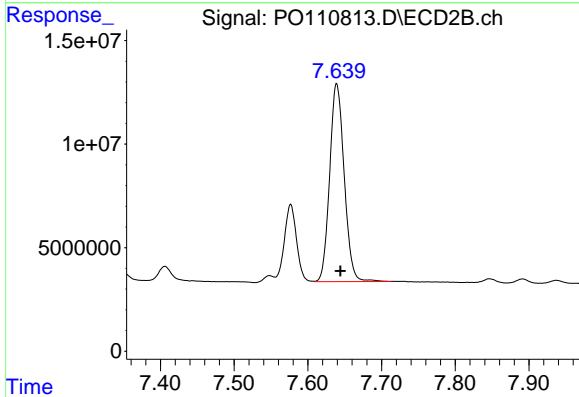
R.T.: 7.577 min
 Delta R.T.: -0.004 min
 Response: 42851633
 Conc: 221.31 ng/ml



#39 AR-1262-4

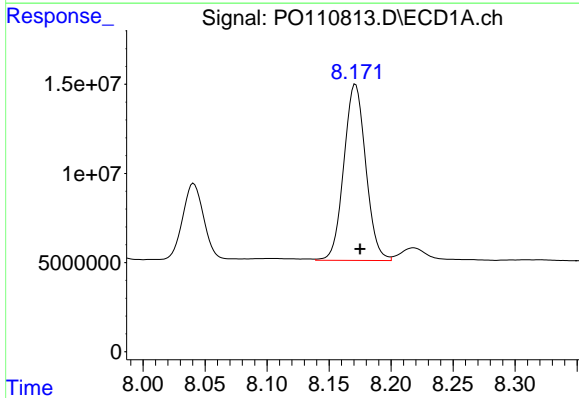
R.T.: 7.674 min
 Delta R.T.: -0.005 min
 Response: 341560763
 Conc: 381.09 ng/ml

Instrument :
 ECD_O
 ClientSampleId :



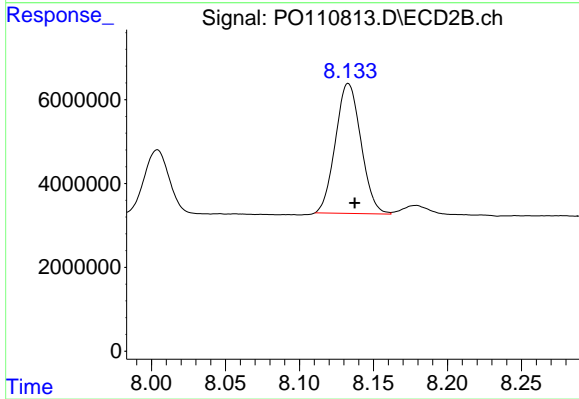
#39 AR-1262-4

R.T.: 7.639 min
 Delta R.T.: -0.005 min
 Response: 130644286
 Conc: 376.44 ng/ml



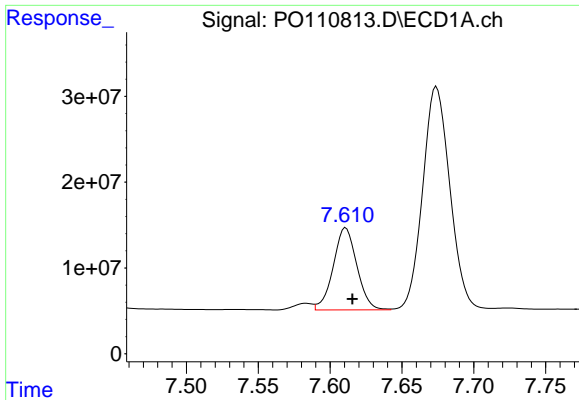
#40 AR-1262-5

R.T.: 8.171 min
 Delta R.T.: -0.004 min
 Response: 121365491
 Conc: 301.16 ng/ml



#40 AR-1262-5

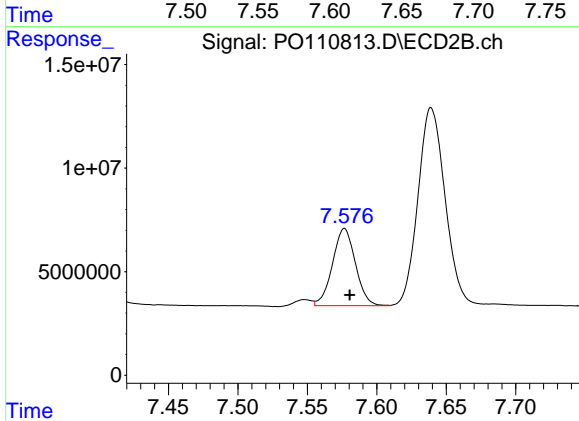
R.T.: 8.133 min
 Delta R.T.: -0.004 min
 Response: 37199405
 Conc: 298.56 ng/ml



#41 AR-1268-1

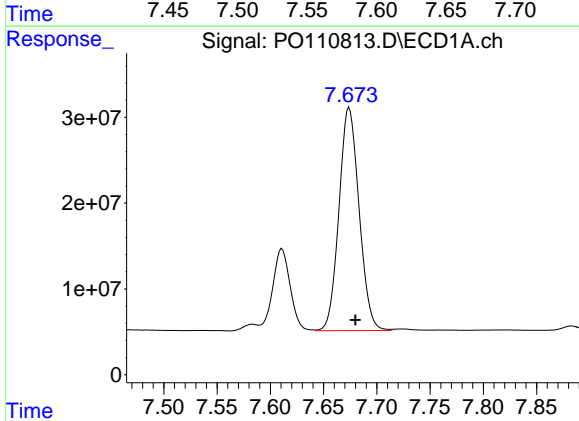
R.T.: 7.611 min
 Delta R.T.: -0.005 min
 Response: 109078853
 Conc: 77.68 ng/ml

Instrument :
 ECD_O
 ClientSampleId :



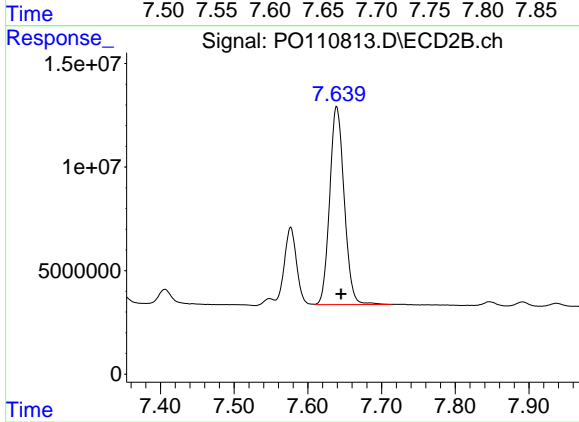
#41 AR-1268-1

R.T.: 7.577 min
 Delta R.T.: -0.004 min
 Response: 42851633
 Conc: 78.23 ng/ml



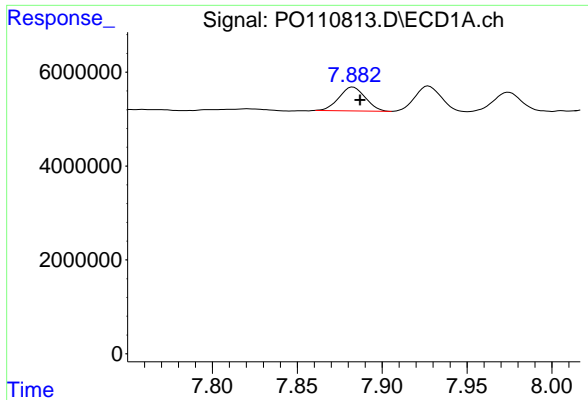
#42 AR-1268-2

R.T.: 7.674 min
 Delta R.T.: -0.006 min
 Response: 341560763
 Conc: 266.90 ng/ml



#42 AR-1268-2

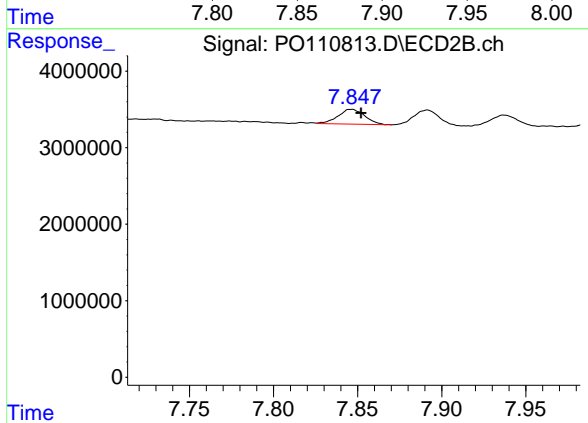
R.T.: 7.639 min
 Delta R.T.: -0.006 min
 Response: 130644286
 Conc: 262.61 ng/ml



#43 AR-1268-3

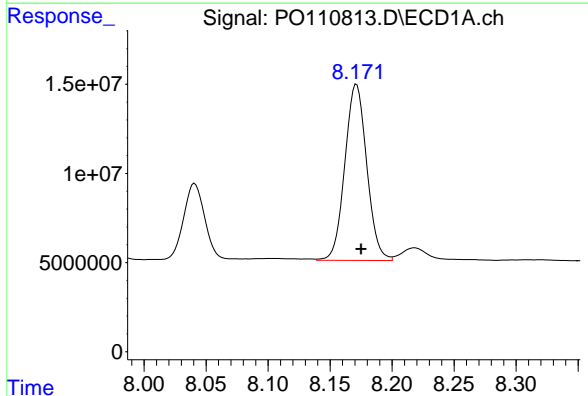
R.T.: 7.883 min
 Delta R.T.: -0.004 min
 Response: 5454989
 Conc: 5.23 ng/ml

Instrument :
 ECD_O
 ClientSampleId :



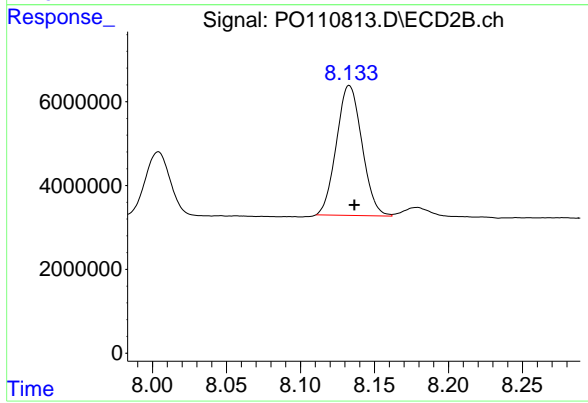
#43 AR-1268-3

R.T.: 7.846 min
 Delta R.T.: -0.006 min
 Response: 2155844
 Conc: 5.80 ng/ml



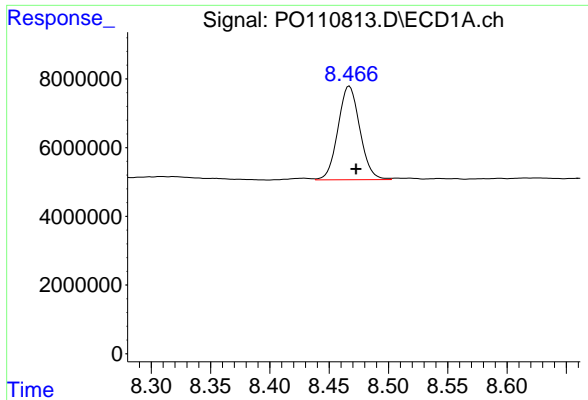
#44 AR-1268-4

R.T.: 8.171 min
 Delta R.T.: -0.004 min
 Response: 121365491
 Conc: 273.25 ng/ml



#44 AR-1268-4

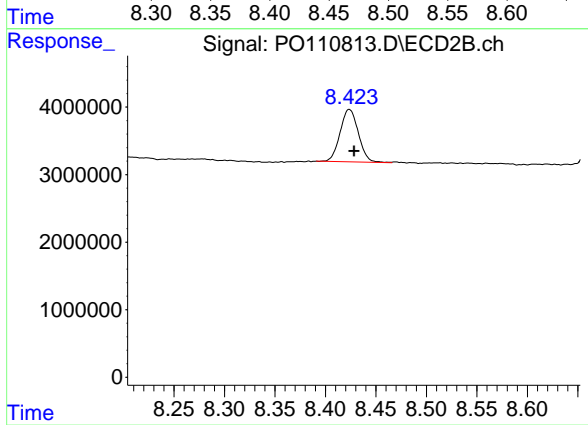
R.T.: 8.133 min
 Delta R.T.: -0.003 min
 Response: 37199405
 Conc: 263.57 ng/ml



#45 AR-1268-5

R.T.: 8.467 min
Delta R.T.: -0.006 min
Response: 34997369
Conc: 10.87 ng/ml

Instrument :
ECD_O
ClientSampleId :



#45 AR-1268-5

R.T.: 8.424 min
Delta R.T.: -0.005 min
Response: 9806169
Conc: 12.46 ng/ml