

Data Path : Z:\pestpcbsrv\HPCHEM1\ECD_0\Data\P0042921\
 Data File : P0077411.D
 Signal(s) : Signal #1: ECD1A.CH Signal #2: ECD2B.CH
 Acq On : 29 Apr 2021 14:26
 Operator : DD\AJ
 Sample : AR1254CCC500
 Misc :
 ALS Vial : 5 Sample Multiplier: 1

Instrument :
 ECD_O
 ClientSampled :

Integration File signal 1: autoint1.e
 Integration File signal 2: autoint2.e
 Quant Time: Apr 29 14:59:49 2021
 Quant Method : Z:\pestpcbsrv\HPCHEM1\ECD_0\methods\P0042821.M
 Quant Title : GC EXTRACTABLES
 QLast Update : Thu Apr 29 05:54:04 2021
 Response via : Initial Calibration
 Integrator: ChemStation 6890 Scale Mode: Small noise peaks clipped

Volume Inj. : 2 µl
 Signal #1 Phase : ZB-MR1 Signal #2 Phase: ZB-MR2
 Signal #1 Info : 30Mx0.32mmx 0.50µ Signal #2 Info : 30M x 0.32mm x 0.25µm

Compound	RT#1	RT#2	Resp#1	Resp#2	ng/ml	ng/ml
System Monitoring Compounds						
1) SA Tetrachlo...	4.896	3.893	5796512	2779539	52.822	49.792
2) SA Decachlor...	10.863	9.125	4620064	1500998	42.015	44.123
Target Compounds						
3) L1 AR-1016-1	6.220	0.000	31436	0	8.103	N.D. #
4) L1 AR-1016-2	6.246	0.000	45168	0	7.000	N.D. #
6) L1 AR-1016-4	0.000	5.391	0	597532	N.D.	433.339 #
7) L1 AR-1016-5	6.727	5.617	625668	350439	205.250	219.534
9) L2 AR-1221-2	5.249	4.241	59184	33118	68.128	75.607
13) L3 AR-1232-3	6.246	0.000	45168	0	17.578	N.D. #
14) L3 AR-1232-4	0.000	5.434	0	153992	N.D.	282.266 #
15) L3 AR-1232-5	6.510	5.617	1150070	350439	1300.367	595.936 #
16) L4 AR-1242-1	6.220	0.000	31436	0	10.963	N.D. #
17) L4 AR-1242-2	6.246	0.000	45168	0	9.148	N.D. #
19) L4 AR-1242-4	0.000	5.434	0	153992	N.D.	125.274 #
20) L4 AR-1242-5	7.199	5.993	815829	1488702	295.592	969.923 #
21) L5 AR-1248-1	6.220	0.000	31436	0	14.329	N.D. #
22) L5 AR-1248-2	6.510	5.391	1150070	597532	336.066	334.590
23) L5 AR-1248-3	6.727	5.434	625668	153992	156.084	90.058 #
24) L5 AR-1248-4	7.158	5.617	1079600	350439	233.101	173.770 #
25) L5 AR-1248-5	7.199	6.040	815829	155005	172.198	67.876 #
26) L6 AR-1254-1	7.125	5.993	2211331	1488702	469.092	481.763
27) L6 AR-1254-2	7.354	6.152	3520161	1319110	473.958	475.950
28) L6 AR-1254-3	7.737	6.568	3624382	1936347	467.090	475.087
29) L6 AR-1254-4	8.034	6.809	2734241	1131177	474.854	495.160
30) L6 AR-1254-5	8.461	7.232	2966557	1741778	473.264	474.965
31) L7 AR-1260-1	7.903	6.704	1578985	1007366	255.396	320.119 #
32) L7 AR-1260-2	8.168	6.900	1730481	846622	231.019	227.671
33) L7 AR-1260-3	8.522	7.050	409893	820292	81.875	238.472 #
34) L7 AR-1260-4	8.757	7.531	1121855	80870	204.861	33.847 #
35) L7 AR-1260-5	9.086	7.779	504741	164623	46.527	31.411 #
36) L8 AR-1262-1	8.522	7.232	409893	1741778	51.432	938.759 #
37) L8 AR-1262-2	9.086	7.779	504741	164623	38.521	27.876 #
38) L8 AR-1262-3	9.415f	0.000	301401	0	34.536	N.D. #
39) L8 AR-1262-4	9.464f	8.124	84520	180321	12.133	43.963 #
41) L9 AR-1268-1	9.415f	0.000	301401	0	18.801	N.D. #
42) L9 AR-1268-2	9.464f	8.124	84520	180321	5.666	30.914 #
45) L9 AR-1268-5	10.567f	0.000	137540	0	3.432	N.D. #

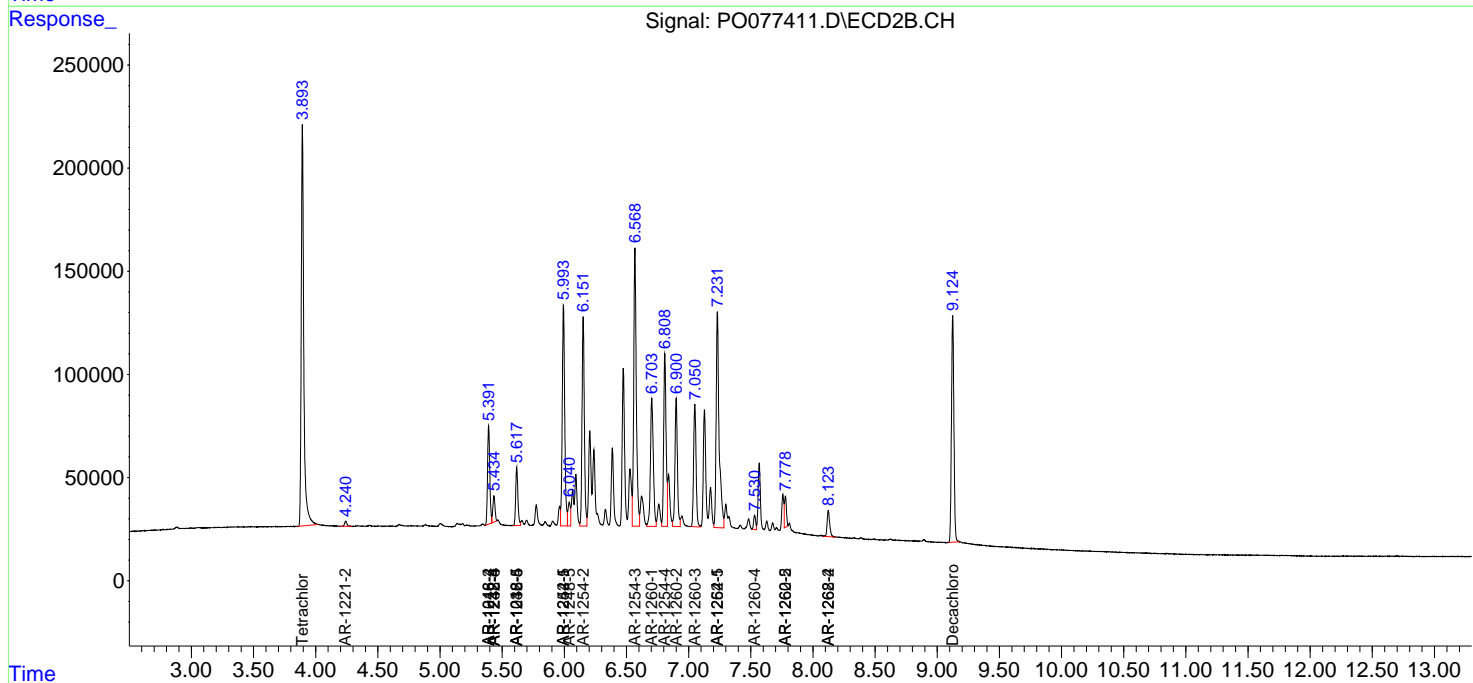
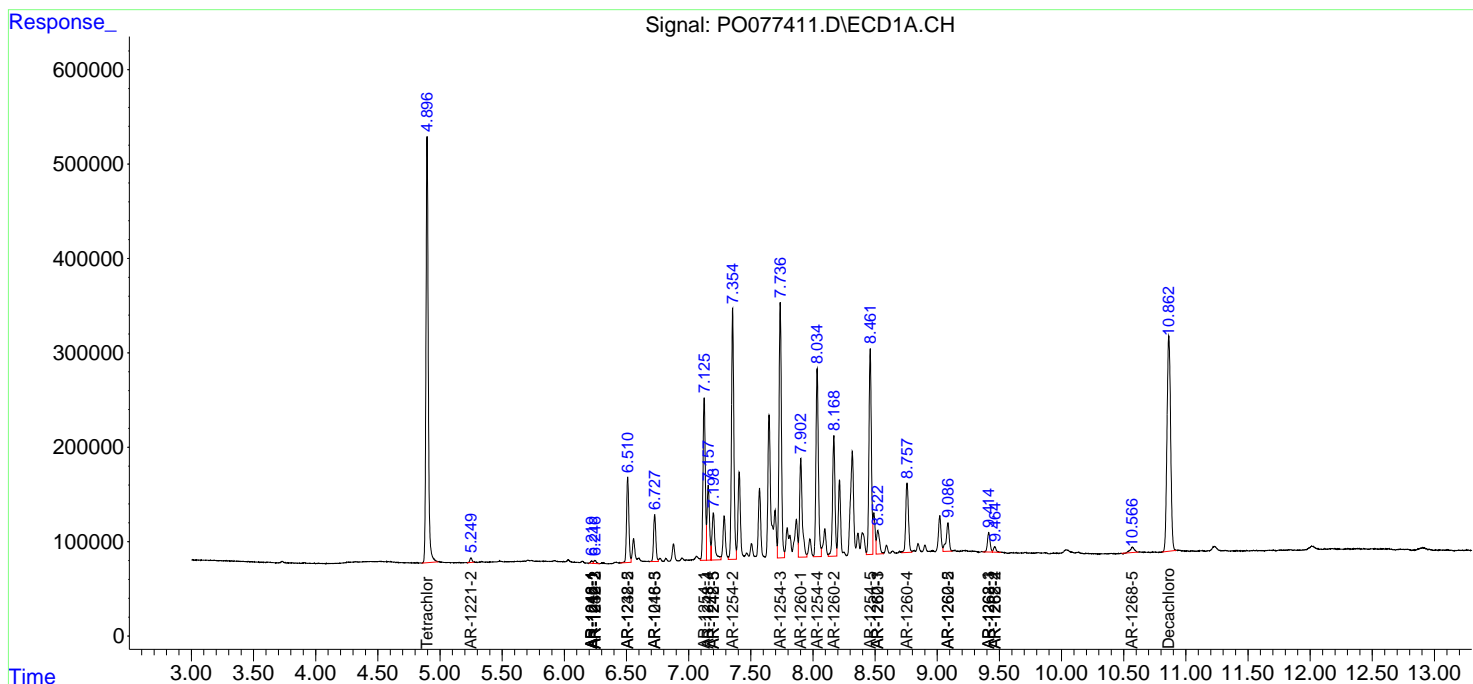
(f)=RT Delta > 1/2 Window (#)=Amounts differ by > 25% (m)=manual int.

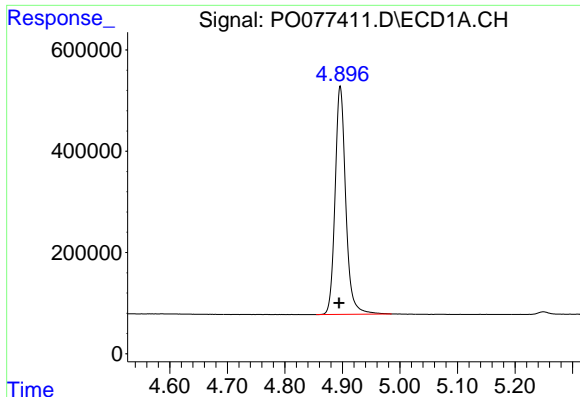
Data Path : Z:\pestpcbsrv\HPCHEM1\ECD_0\Data\P0042921\
 Data File : P0077411.D
 Signal(s) : Signal #1: ECD1A.CH Signal #2: ECD2B.CH
 Acq On : 29 Apr 2021 14:26
 Operator : DD\AJ
 Sample : AR1254CCC500
 Misc :
 ALS Vial : 5 Sample Multiplier: 1

Instrument :
 ECD_O
 ClientSampled :

Integration File signal 1: autoint1.e
 Integration File signal 2: autoint2.e
 Quant Time: Apr 29 14:59:49 2021
 Quant Method : Z:\pestpcbsrv\HPCHEM1\ECD_0\methods\P0042821.M
 Quant Title : GC EXTRACTABLES
 QLast Update : Thu Apr 29 05:54:04 2021
 Response via : Initial Calibration
 Integrator: ChemStation 6890 Scale Mode: Small noise peaks clipped

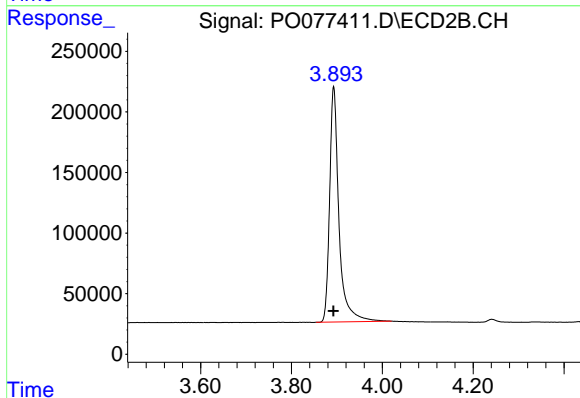
Volume Inj. : 2 µl
 Signal #1 Phase : ZB-MR1 Signal #2 Phase: ZB-MR2
 Signal #1 Info : 30Mx0.32mmx 0.50µ Signal #2 Info : 30M x 0.32mm x 0.25µm



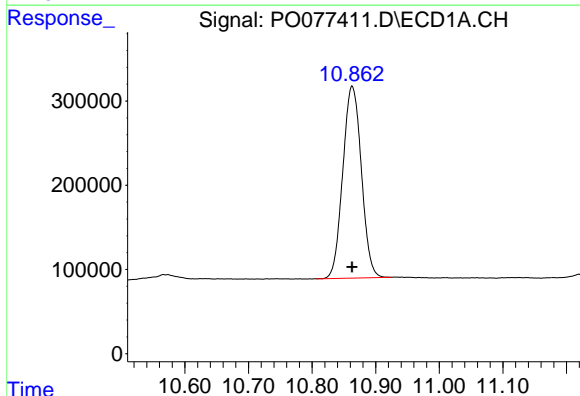


#1 Tetrachloro-m-xylene
 R.T.: 4.896 min
 Delta R.T.: 0.002 min
 Response: 5796512
 Conc: 52.82 ng/ml

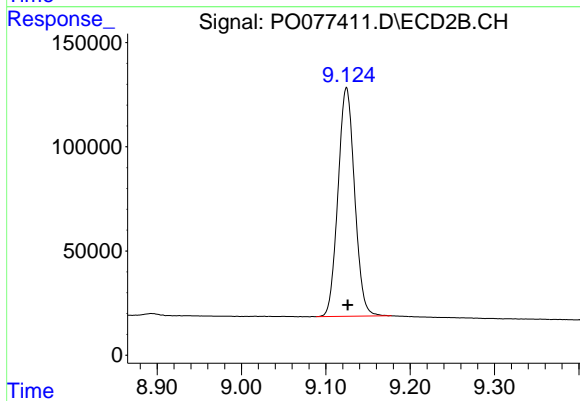
Instrument :
 ECD_O
 ClientSampleId :



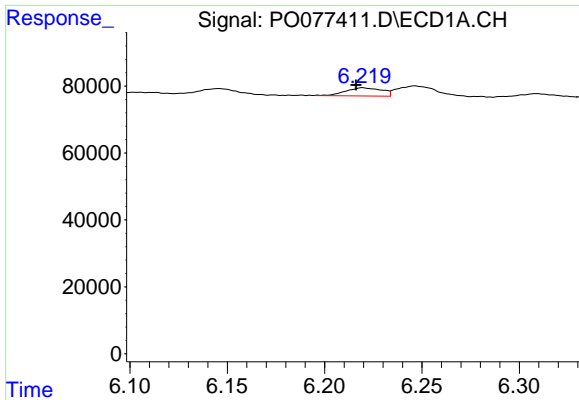
#1 Tetrachloro-m-xylene
 R.T.: 3.893 min
 Delta R.T.: 0.000 min
 Response: 2779539
 Conc: 49.79 ng/ml



#2 Decachlorobiphenyl
 R.T.: 10.863 min
 Delta R.T.: 0.000 min
 Response: 4620064
 Conc: 42.02 ng/ml

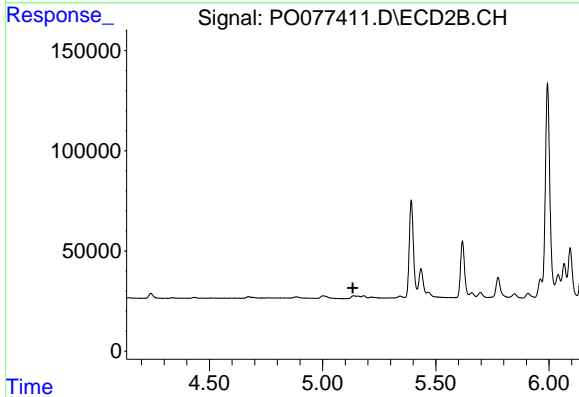


#2 Decachlorobiphenyl
 R.T.: 9.125 min
 Delta R.T.: -0.001 min
 Response: 1500998
 Conc: 44.12 ng/ml

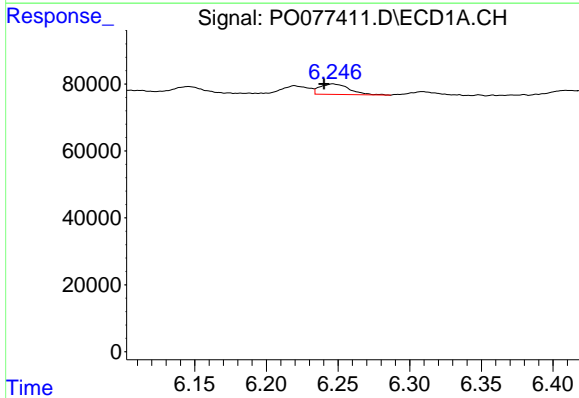


#3 AR-1016-1
 R.T.: 6.220 min
 Delta R.T.: 0.003 min
 Response: 31436
 Conc: 8.10 ng/ml

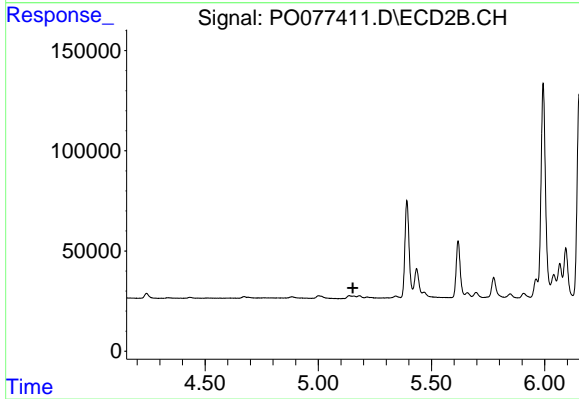
Instrument :
 ECD_O
 ClientSampleId :



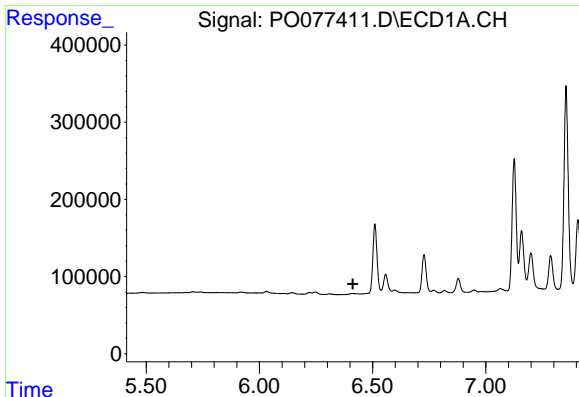
#3 AR-1016-1
 R.T.: 0.000 min
 Exp R.T. : 5.134 min
 Response: 0
 Conc: N.D.



#4 AR-1016-2
 R.T.: 6.246 min
 Delta R.T.: 0.006 min
 Response: 45168
 Conc: 7.00 ng/ml



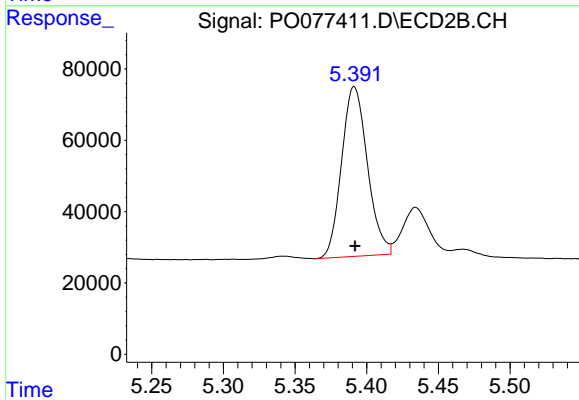
#4 AR-1016-2
 R.T.: 0.000 min
 Exp R.T. : 5.153 min
 Response: 0
 Conc: N.D.



#6 AR-1016-4

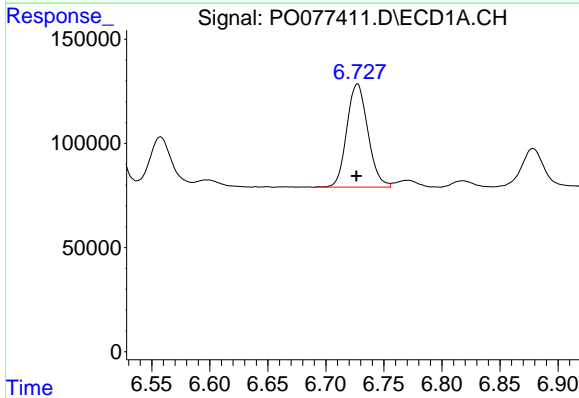
R.T.: 0.000 min
Exp R.T.: 6.413 min
Response: 0
Conc: N.D.

Instrument :
ECD_O
ClientSampled :



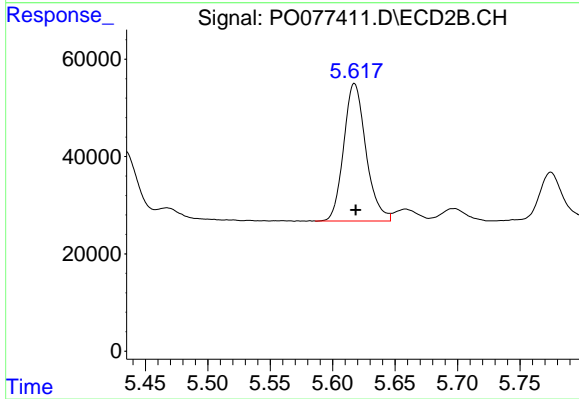
#6 AR-1016-4

R.T.: 5.391 min
Delta R.T.: 0.000 min
Response: 597532
Conc: 433.34 ng/ml



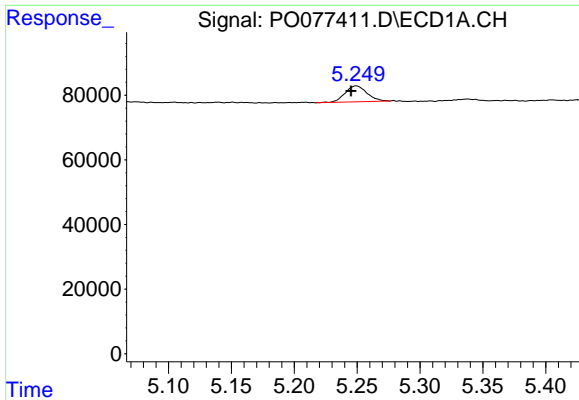
#7 AR-1016-5

R.T.: 6.727 min
Delta R.T.: 0.001 min
Response: 625668
Conc: 205.25 ng/ml



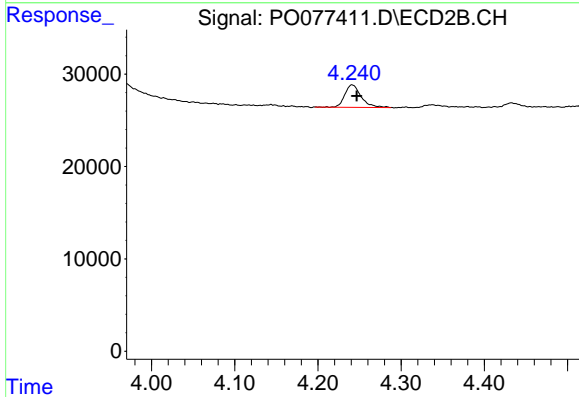
#7 AR-1016-5

R.T.: 5.617 min
Delta R.T.: 0.000 min
Response: 350439
Conc: 219.53 ng/ml

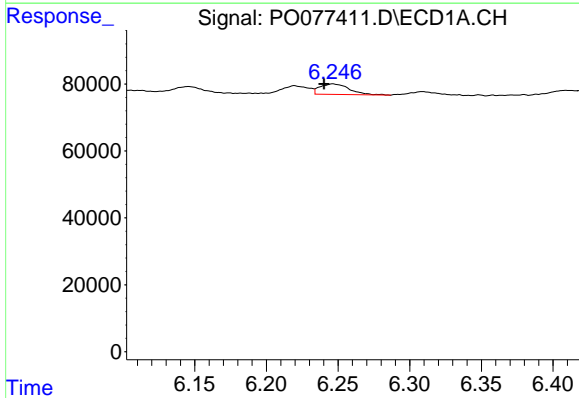


#9 AR-1221-2
 R.T.: 5.249 min
 Delta R.T.: 0.004 min
 Response: 59184
 Conc: 68.13 ng/ml

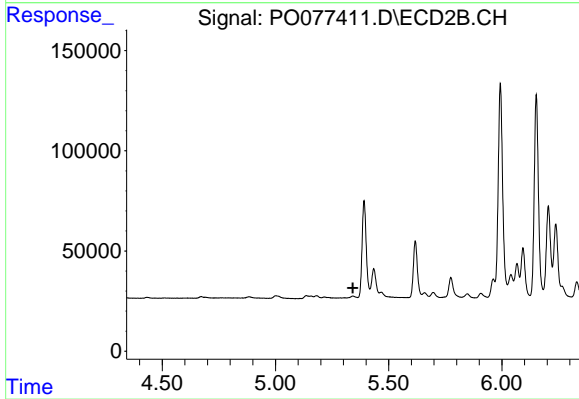
Instrument :
 ECD_O
 ClientSampleId :



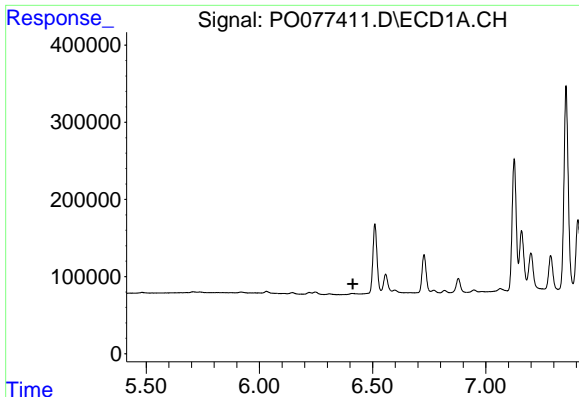
#9 AR-1221-2
 R.T.: 4.241 min
 Delta R.T.: -0.006 min
 Response: 33118
 Conc: 75.61 ng/ml



#13 AR-1232-3
 R.T.: 6.246 min
 Delta R.T.: 0.006 min
 Response: 45168
 Conc: 17.58 ng/ml



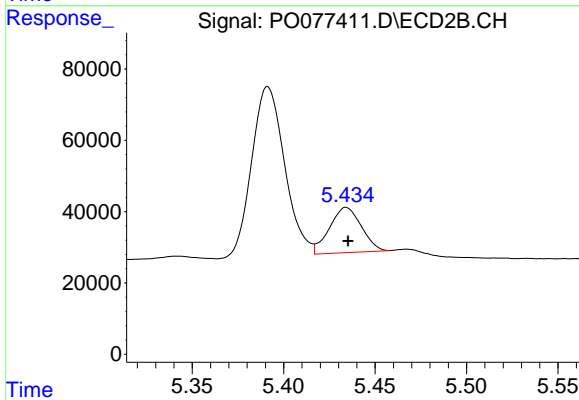
#13 AR-1232-3
 R.T.: 0.000 min
 Exp R.T.: 5.342 min
 Response: 0
 Conc: N.D.



#14 AR-1232-4

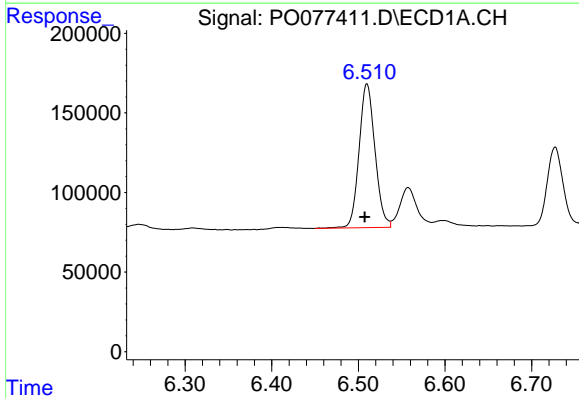
R.T.: 0.000 min
 Exp R.T.: 6.413 min
 Response: 0
 Conc: N.D.

Instrument :
 ECD_O
 ClientSampled :



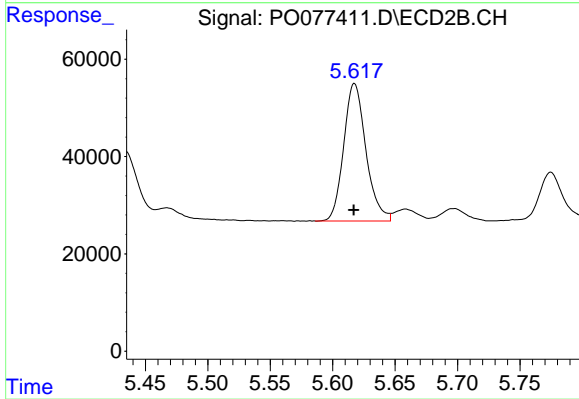
#14 AR-1232-4

R.T.: 5.434 min
 Delta R.T.: 0.000 min
 Response: 153992
 Conc: 282.27 ng/ml



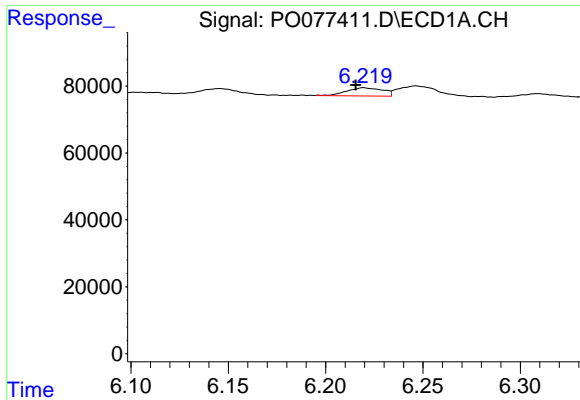
#15 AR-1232-5

R.T.: 6.510 min
 Delta R.T.: 0.003 min
 Response: 1150070
 Conc: 1300.37 ng/ml



#15 AR-1232-5

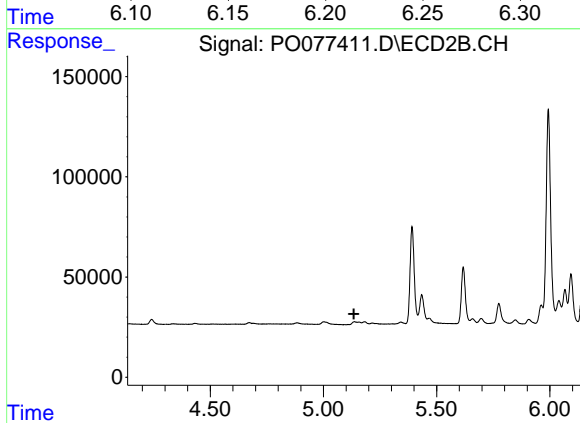
R.T.: 5.617 min
 Delta R.T.: 0.000 min
 Response: 350439
 Conc: 595.94 ng/ml



#16 AR-1242-1

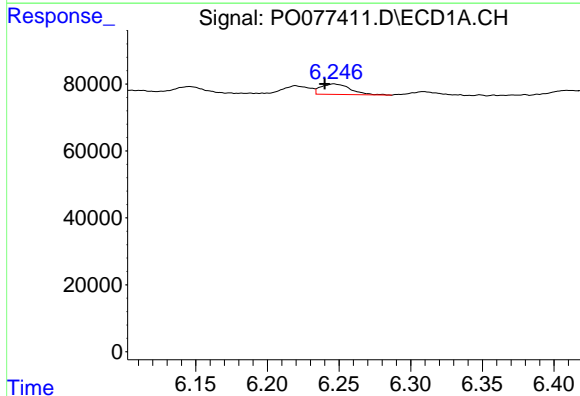
R.T.: 6.220 min
 Delta R.T.: 0.004 min
 Response: 31436
 Conc: 10.96 ng/ml

Instrument :
 ECD_O
 ClientSampleId :



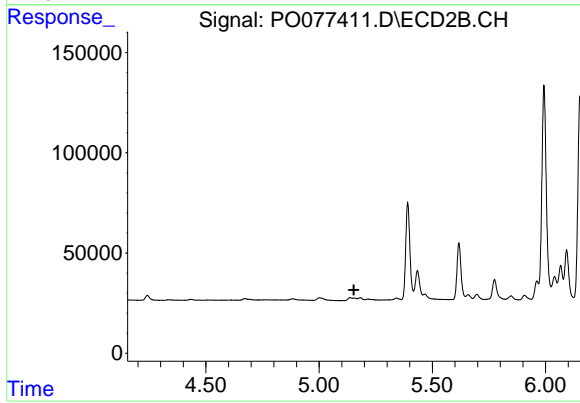
#16 AR-1242-1

R.T.: 0.000 min
 Exp R.T. : 5.134 min
 Response: 0
 Conc: N.D.



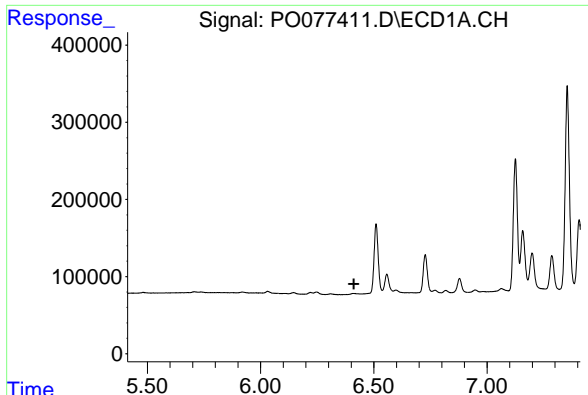
#17 AR-1242-2

R.T.: 6.246 min
 Delta R.T.: 0.007 min
 Response: 45168
 Conc: 9.15 ng/ml



#17 AR-1242-2

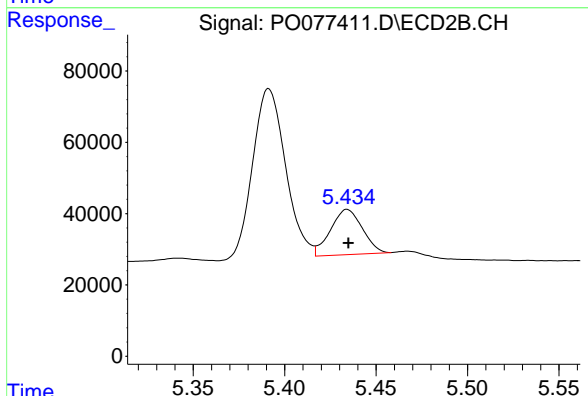
R.T.: 0.000 min
 Exp R.T. : 5.153 min
 Response: 0
 Conc: N.D.



#19 AR-1242-4

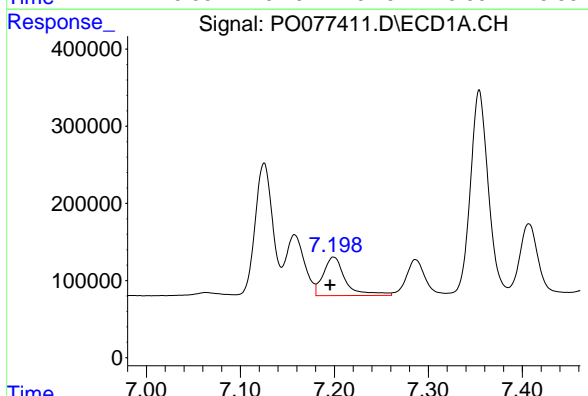
R.T.: 0.000 min
 Exp R.T.: 6.412 min
 Response: 0
 Conc: N.D.

Instrument :
 ECD_O
 ClientSampled :



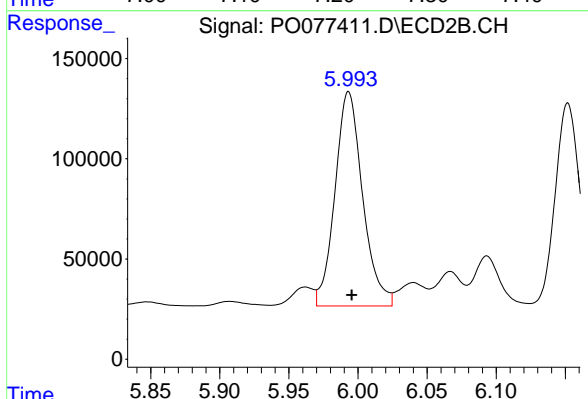
#19 AR-1242-4

R.T.: 5.434 min
 Delta R.T.: 0.000 min
 Response: 153992
 Conc: 125.27 ng/ml



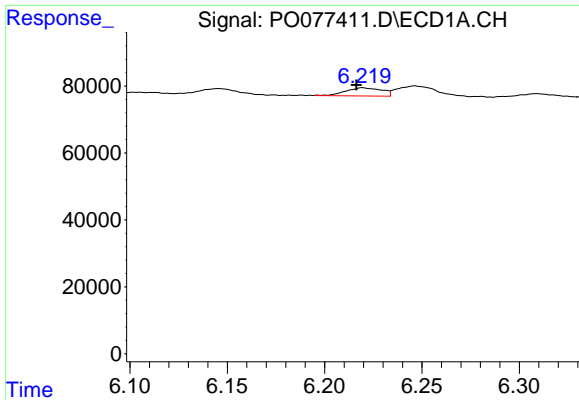
#20 AR-1242-5

R.T.: 7.199 min
 Delta R.T.: 0.004 min
 Response: 815829
 Conc: 295.59 ng/ml



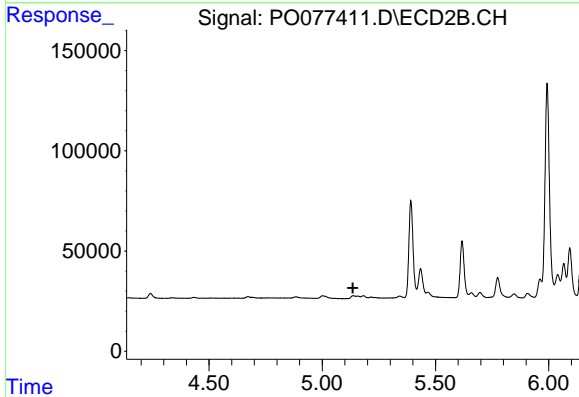
#20 AR-1242-5

R.T.: 5.993 min
 Delta R.T.: -0.002 min
 Response: 1488702
 Conc: 969.92 ng/ml

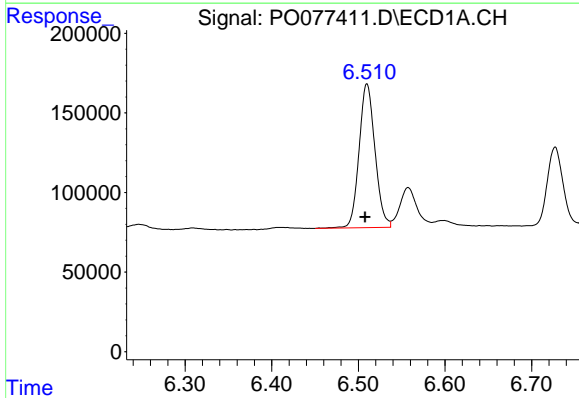


#21 AR-1248-1
 R.T.: 6.220 min
 Delta R.T.: 0.003 min
 Response: 31436
 Conc: 14.33 ng/ml

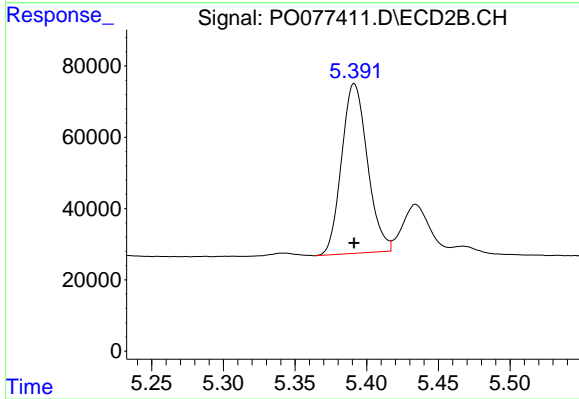
Instrument :
 ECD_O
 ClientSampled :



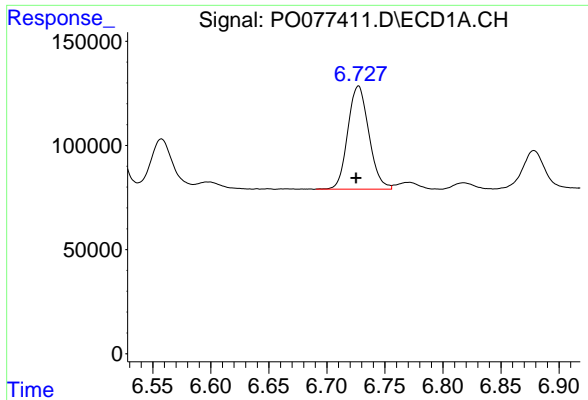
#21 AR-1248-1
 R.T.: 0.000 min
 Exp R.T. : 5.136 min
 Response: 0
 Conc: N.D.



#22 AR-1248-2
 R.T.: 6.510 min
 Delta R.T.: 0.002 min
 Response: 1150070
 Conc: 336.07 ng/ml



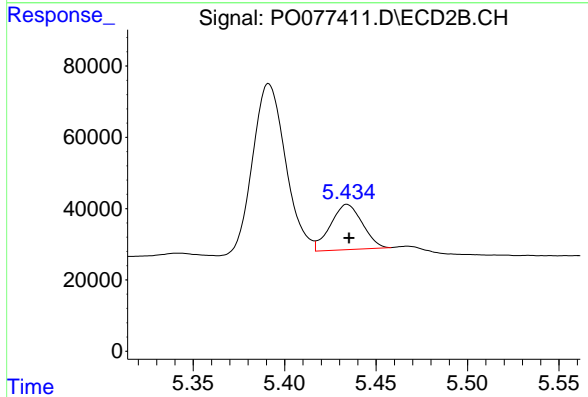
#22 AR-1248-2
 R.T.: 5.391 min
 Delta R.T.: 0.000 min
 Response: 597532
 Conc: 334.59 ng/ml



#23 AR-1248-3

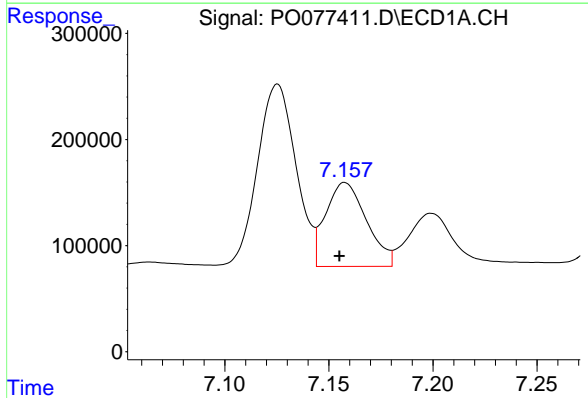
R.T.: 6.727 min
 Delta R.T.: 0.002 min
 Response: 625668
 Conc: 156.08 ng/ml

Instrument :
 ECD_O
 ClientSampled :



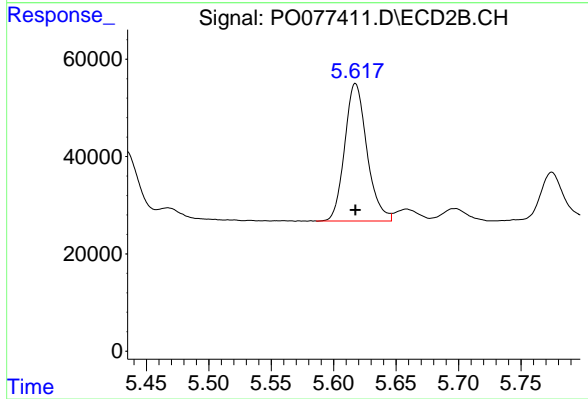
#23 AR-1248-3

R.T.: 5.434 min
 Delta R.T.: -0.001 min
 Response: 153992
 Conc: 90.06 ng/ml



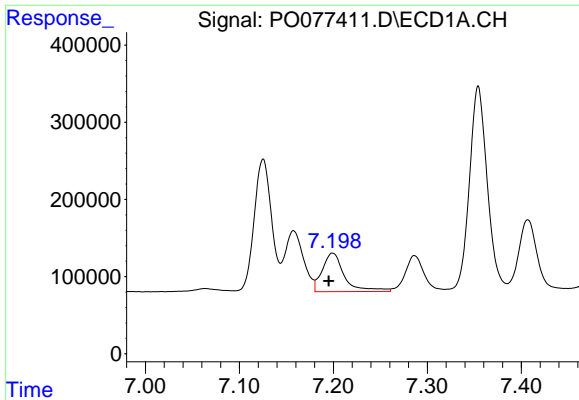
#24 AR-1248-4

R.T.: 7.158 min
 Delta R.T.: 0.003 min
 Response: 1079600
 Conc: 233.10 ng/ml



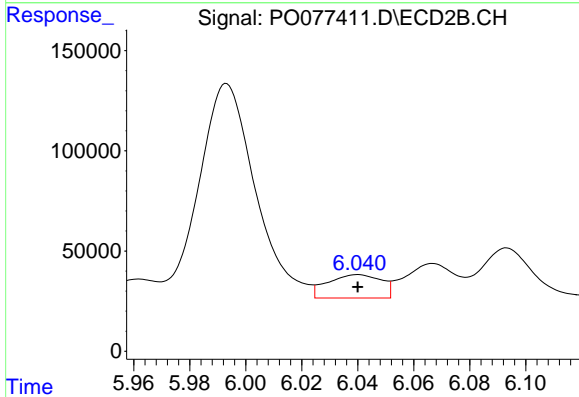
#24 AR-1248-4

R.T.: 5.617 min
 Delta R.T.: 0.000 min
 Response: 350439
 Conc: 173.77 ng/ml

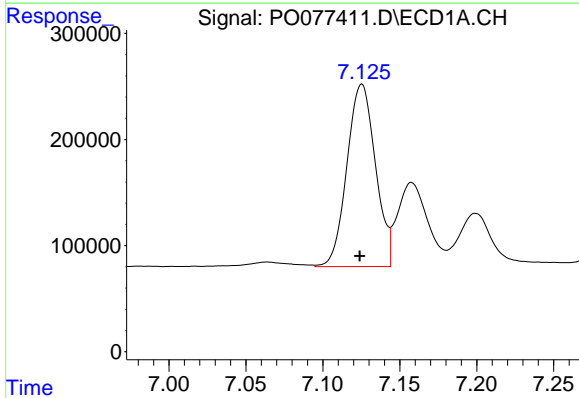


#25 AR-1248-5
 R.T.: 7.199 min
 Delta R.T.: 0.004 min
 Response: 815829
 Conc: 172.20 ng/ml

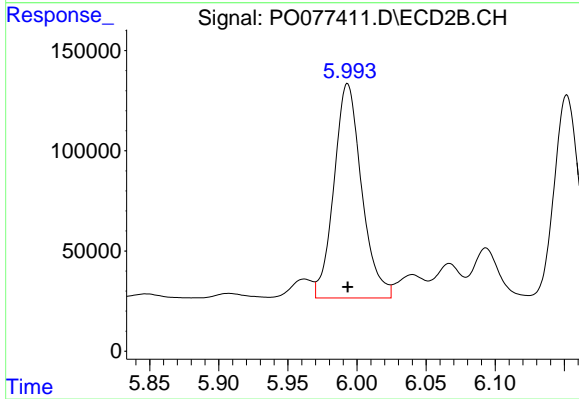
Instrument :
 ECD_O
 ClientSampled :



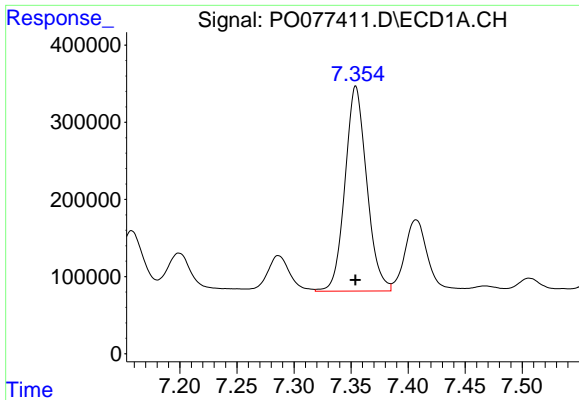
#25 AR-1248-5
 R.T.: 6.040 min
 Delta R.T.: 0.000 min
 Response: 155005
 Conc: 67.88 ng/ml



#26 AR-1254-1
 R.T.: 7.125 min
 Delta R.T.: 0.001 min
 Response: 2211331
 Conc: 469.09 ng/ml



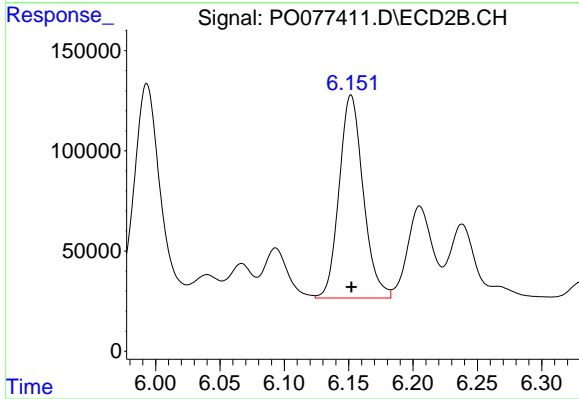
#26 AR-1254-1
 R.T.: 5.993 min
 Delta R.T.: 0.000 min
 Response: 1488702
 Conc: 481.76 ng/ml



#27 AR-1254-2

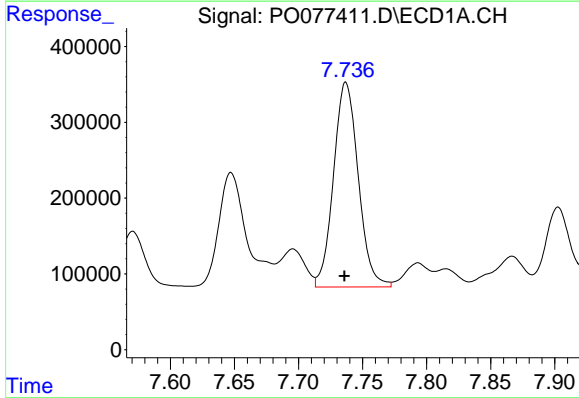
R.T.: 7.354 min
 Delta R.T.: 0.000 min
 Response: 3520161
 Conc: 473.96 ng/ml

Instrument :
 ECD_O
 ClientSampled :



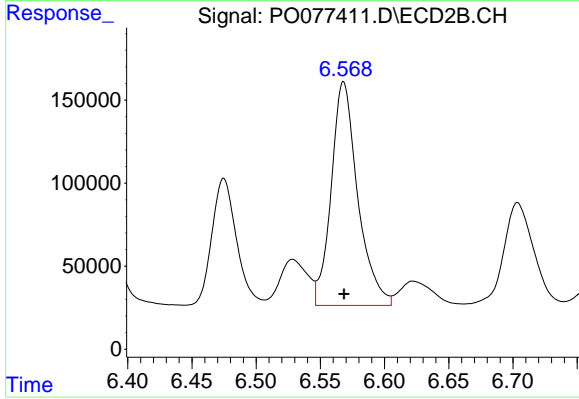
#27 AR-1254-2

R.T.: 6.152 min
 Delta R.T.: 0.000 min
 Response: 1319110
 Conc: 475.95 ng/ml



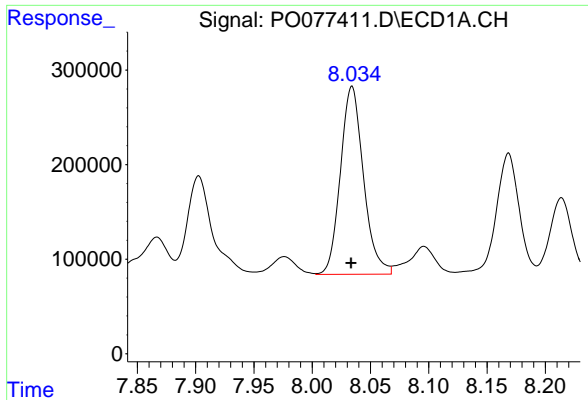
#28 AR-1254-3

R.T.: 7.737 min
 Delta R.T.: 0.000 min
 Response: 3624382
 Conc: 467.09 ng/ml



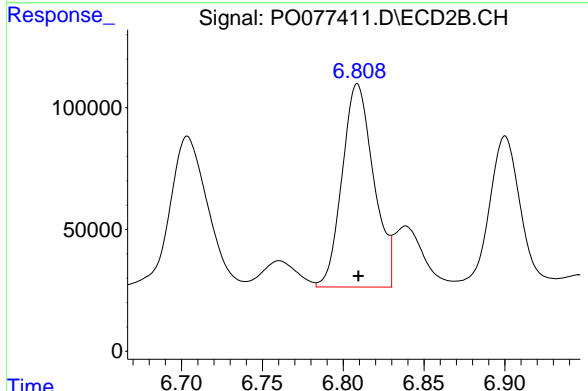
#28 AR-1254-3

R.T.: 6.568 min
 Delta R.T.: 0.000 min
 Response: 1936347
 Conc: 475.09 ng/ml

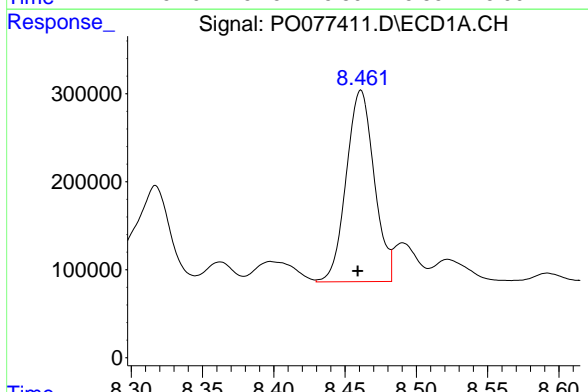


#29 AR-1254-4
 R.T.: 8.034 min
 Delta R.T.: 0.000 min
 Response: 2734241
 Conc: 474.85 ng/ml

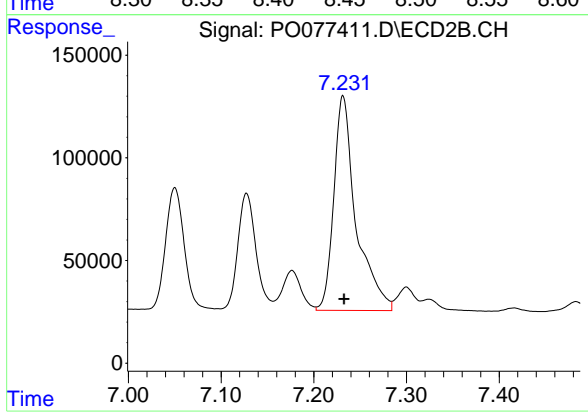
Instrument :
 ECD_O
 ClientSampled :



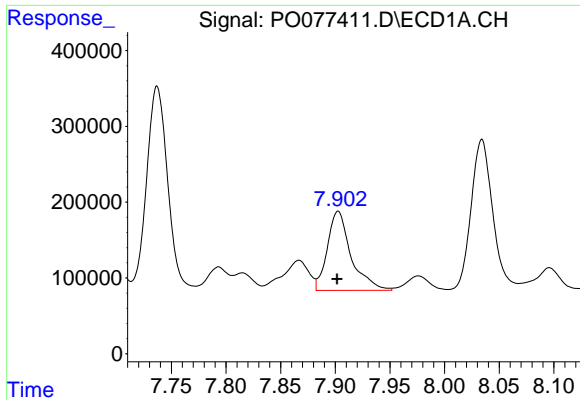
#29 AR-1254-4
 R.T.: 6.809 min
 Delta R.T.: 0.000 min
 Response: 1131177
 Conc: 495.16 ng/ml



#30 AR-1254-5
 R.T.: 8.461 min
 Delta R.T.: 0.002 min
 Response: 2966557
 Conc: 473.26 ng/ml

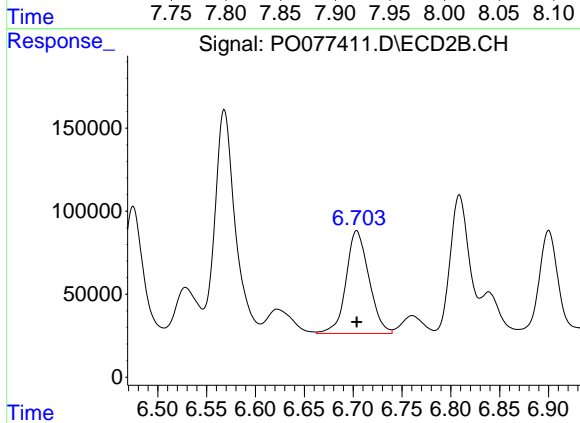


#30 AR-1254-5
 R.T.: 7.232 min
 Delta R.T.: -0.001 min
 Response: 1741778
 Conc: 474.97 ng/ml

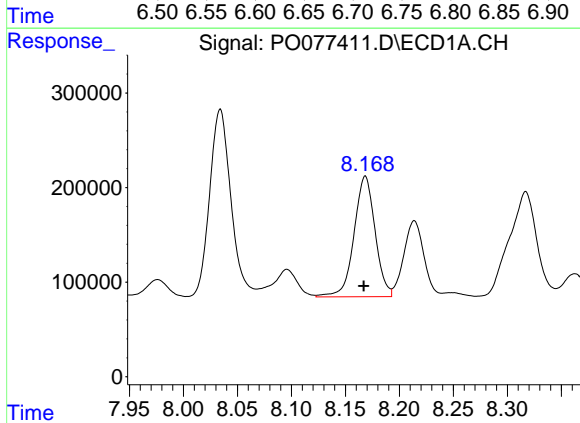


#31 AR-1260-1
 R.T.: 7.903 min
 Delta R.T.: 0.001 min
 Response: 1578985
 Conc: 255.40 ng/ml

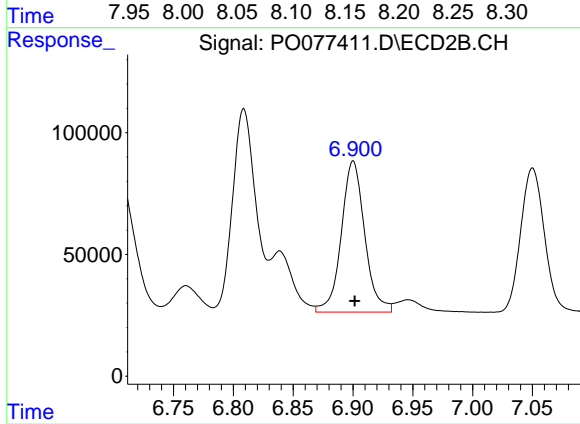
Instrument :
 ECD_O
 ClientSampled :



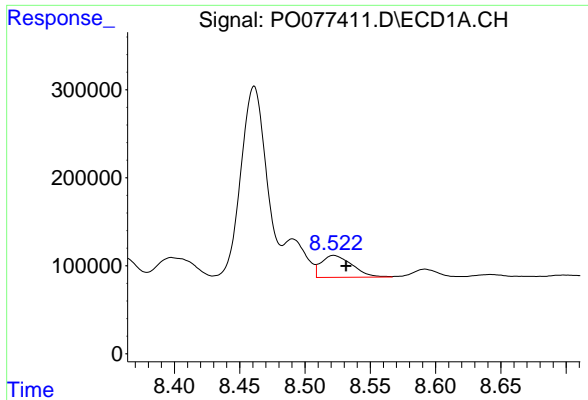
#31 AR-1260-1
 R.T.: 6.704 min
 Delta R.T.: 0.000 min
 Response: 1007366
 Conc: 320.12 ng/ml



#32 AR-1260-2
 R.T.: 8.168 min
 Delta R.T.: 0.001 min
 Response: 1730481
 Conc: 231.02 ng/ml

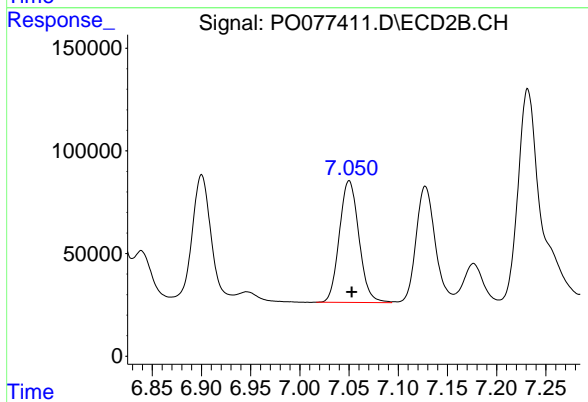


#32 AR-1260-2
 R.T.: 6.900 min
 Delta R.T.: -0.001 min
 Response: 846622
 Conc: 227.67 ng/ml

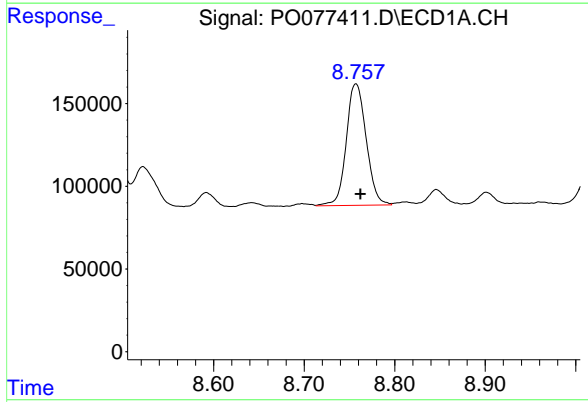


#33 AR-1260-3
 R.T.: 8.522 min
 Delta R.T.: -0.010 min
 Response: 409893
 Conc: 81.88 ng/ml

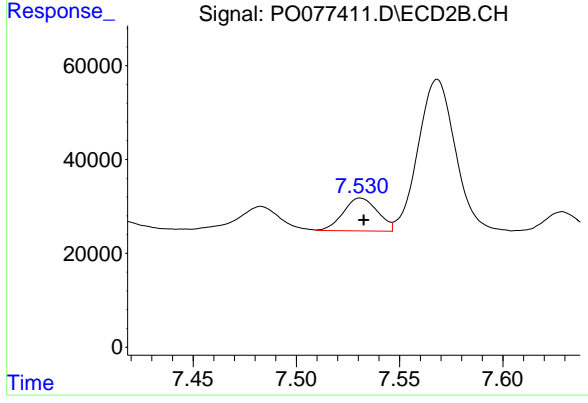
Instrument :
 ECD_O
 ClientSampled :



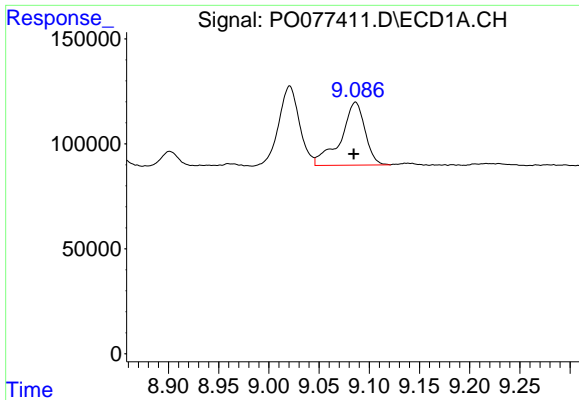
#33 AR-1260-3
 R.T.: 7.050 min
 Delta R.T.: -0.003 min
 Response: 820292
 Conc: 238.47 ng/ml



#34 AR-1260-4
 R.T.: 8.757 min
 Delta R.T.: -0.005 min
 Response: 1121855
 Conc: 204.86 ng/ml



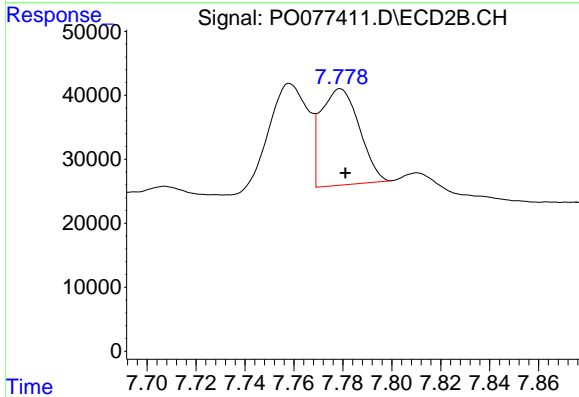
#34 AR-1260-4
 R.T.: 7.531 min
 Delta R.T.: -0.002 min
 Response: 80870
 Conc: 33.85 ng/ml



#35 AR-1260-5

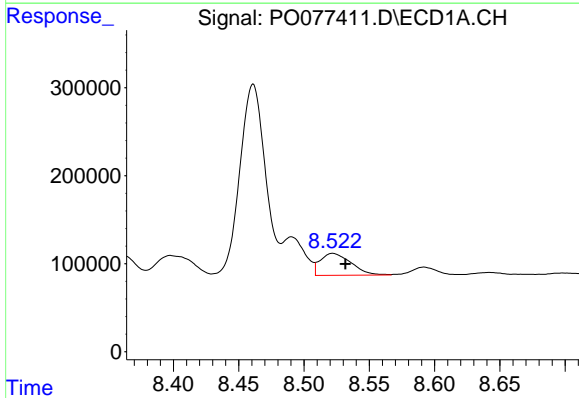
R.T.: 9.086 min
 Delta R.T.: 0.002 min
 Response: 504741
 Conc: 46.53 ng/ml

Instrument :
 ECD_O
 ClientSampleId :



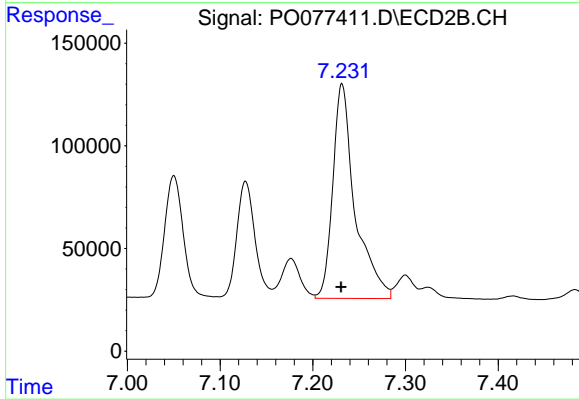
#35 AR-1260-5

R.T.: 7.779 min
 Delta R.T.: -0.002 min
 Response: 164623
 Conc: 31.41 ng/ml



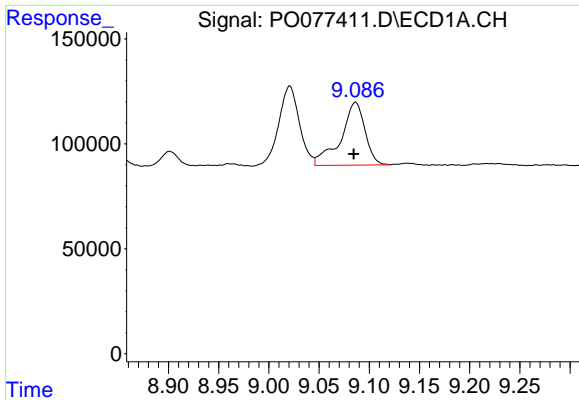
#36 AR-1262-1

R.T.: 8.522 min
 Delta R.T.: -0.010 min
 Response: 409893
 Conc: 51.43 ng/ml



#36 AR-1262-1

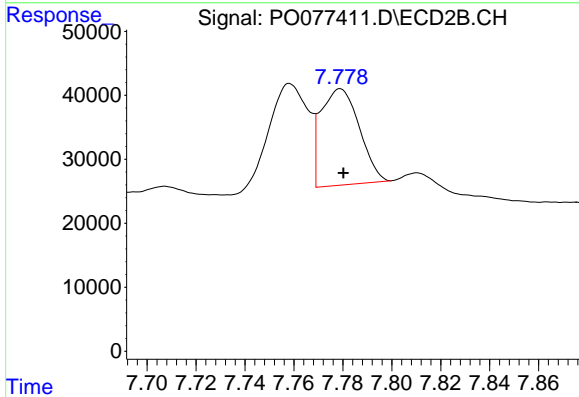
R.T.: 7.232 min
 Delta R.T.: 0.000 min
 Response: 1741778
 Conc: 938.76 ng/ml



#37 AR-1262-2

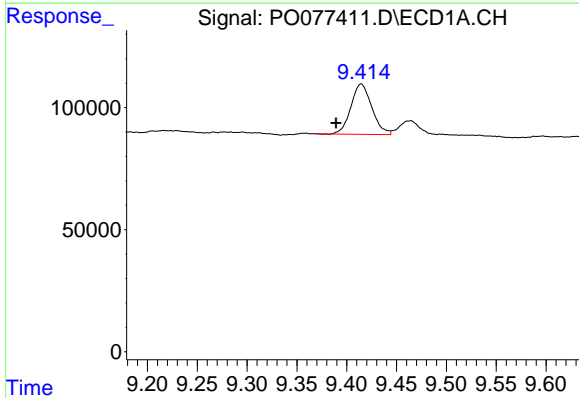
R.T.: 9.086 min
 Delta R.T.: 0.002 min
 Response: 504741
 Conc: 38.52 ng/ml

Instrument :
 ECD_O
 ClientSampleId :



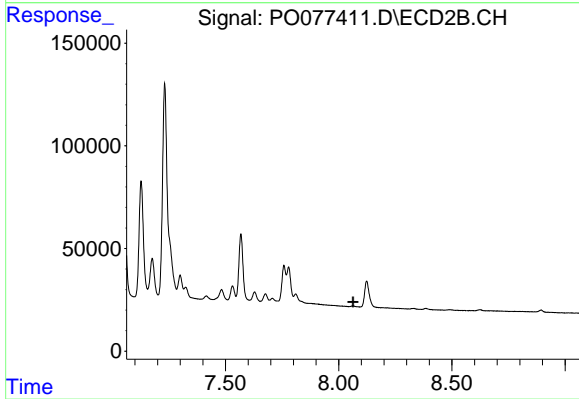
#37 AR-1262-2

R.T.: 7.779 min
 Delta R.T.: -0.001 min
 Response: 164623
 Conc: 27.88 ng/ml



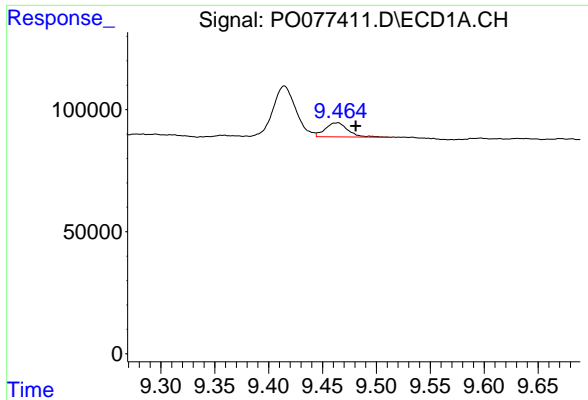
#38 AR-1262-3

R.T.: 9.415 min
 Delta R.T.: 0.025 min
 Response: 301401
 Conc: 34.54 ng/ml



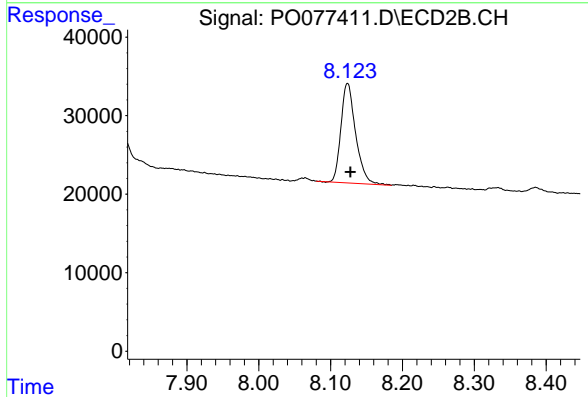
#38 AR-1262-3

R.T.: 0.000 min
 Exp R.T. : 8.063 min
 Response: 0
 Conc: N.D.

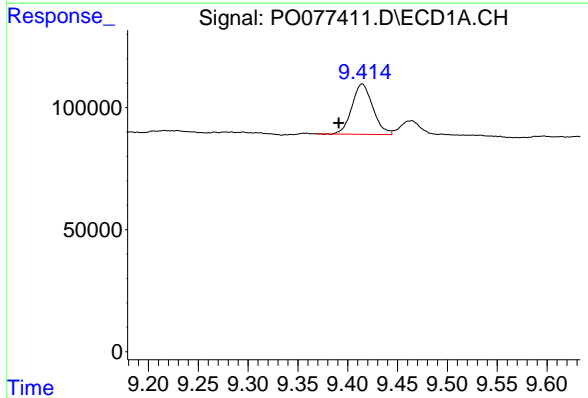


#39 AR-1262-4
 R.T.: 9.464 min
 Delta R.T.: -0.017 min
 Response: 84520
 Conc: 12.13 ng/ml

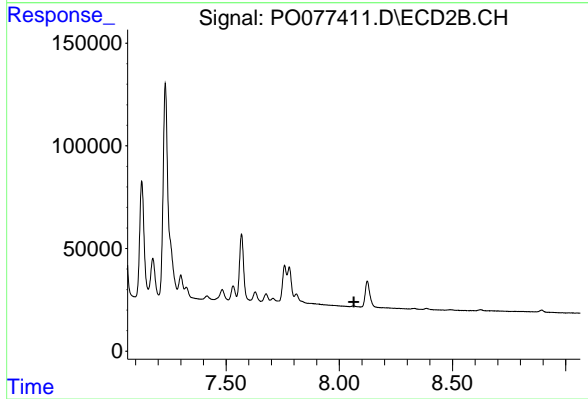
Instrument :
 ECD_O
 ClientSampled :



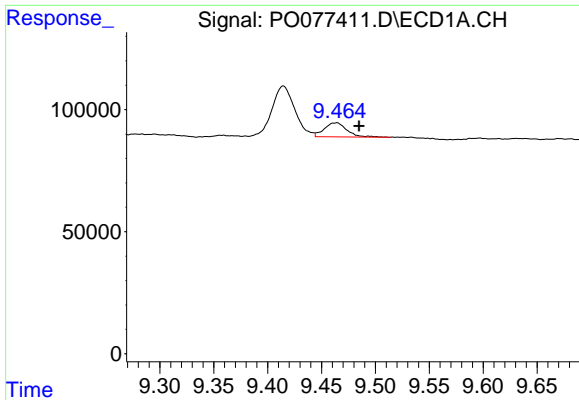
#39 AR-1262-4
 R.T.: 8.124 min
 Delta R.T.: -0.004 min
 Response: 180321
 Conc: 43.96 ng/ml



#41 AR-1268-1
 R.T.: 9.415 min
 Delta R.T.: 0.024 min
 Response: 301401
 Conc: 18.80 ng/ml



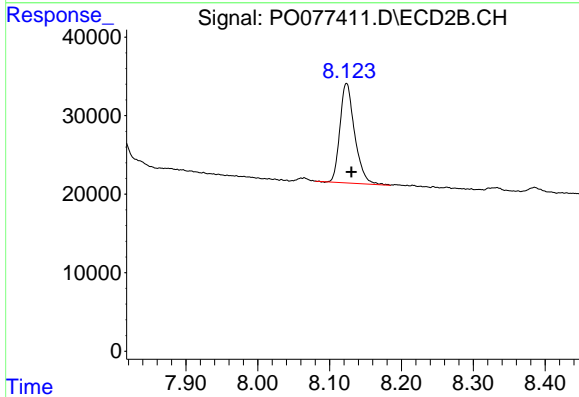
#41 AR-1268-1
 R.T.: 0.000 min
 Exp R.T. : 8.065 min
 Response: 0
 Conc: N.D.



#42 AR-1268-2

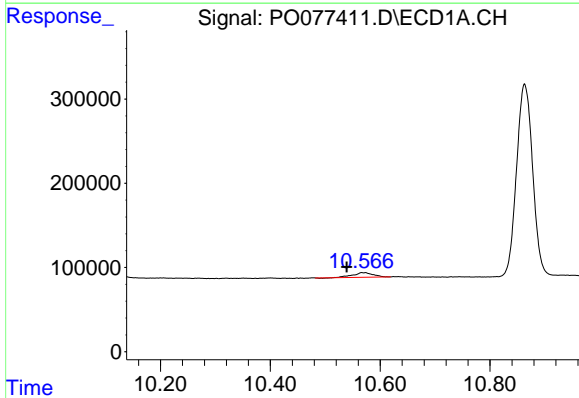
R.T.: 9.464 min
 Delta R.T.: -0.021 min
 Response: 84520
 Conc: 5.67 ng/ml

Instrument :
 ECD_O
 ClientSampled :



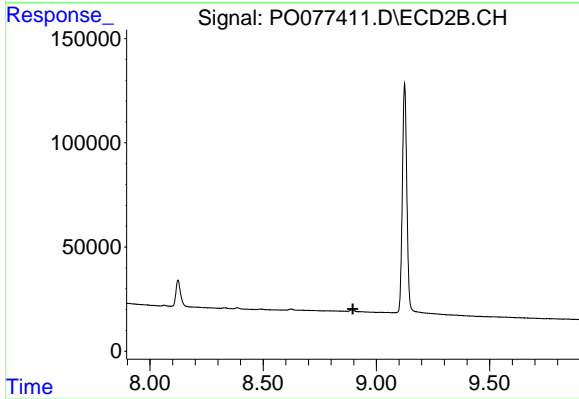
#42 AR-1268-2

R.T.: 8.124 min
 Delta R.T.: -0.007 min
 Response: 180321
 Conc: 30.91 ng/ml



#45 AR-1268-5

R.T.: 10.567 min
 Delta R.T.: 0.027 min
 Response: 137540
 Conc: 3.43 ng/ml



#45 AR-1268-5

R.T.: 0.000 min
 Exp R.T. : 8.896 min
 Response: 0
 Conc: N.D.