

Data Path : Z:\pestpcbsrv\HPCHEM1\ECD_0\Data\P0042924\
 Data File : P0103283.D
 Signal(s) : Signal #1: ECD1A.ch Signal #2: ECD2B.ch
 Acq On : 29 Apr 2024 15:17
 Operator : YP/AJ
 Sample : PB160575BL
 Misc :
 ALS Vial : 7 Sample Multiplier: 1

Instrument :
 ECD_0
 ClientSampleId :
 PB160575BL

Integration File signal 1: autoint1.e
 Integration File signal 2: autoint2.e
 Quant Time: Apr 30 01:29:11 2024
 Quant Method : Z:\pestpcbsrv\HPCHEM1\ECD_0\methods\P0042224.M
 Quant Title : GC EXTRACTABLES
 QLast Update : Tue Apr 23 02:20:10 2024
 Response via : Initial Calibration
 Integrator: ChemStation

Volume Inj. : 2 µl
 Signal #1 Phase : ZB-MR1 Signal #2 Phase: ZB-MR2
 Signal #1 Info : 30Mx0.32mmx 0.50µ Signal #2 Info : 30M x 0.32mm x 0.25µm

Compound	RT#1	RT#2	Resp#1	Resp#2	ng/ml	ng/ml

System Monitoring Compounds						
1) SA Tetrachlo...	4.252	3.368	106.9E6	46384685	21.188	16.760
2) SA Decachlor...	9.768	8.217	63546486	36602804	21.884	21.319
Target Compounds						
3) L1 AR-1016-1	5.393	4.415	913992	175197	6.226	2.228 #
4) L1 AR-1016-2	5.423	4.430	517820	103175	2.398	0.879 #
5) L1 AR-1016-3	5.481	4.610	393436	28717	2.893	0.464 #
6) L1 AR-1016-4	5.582	4.649	196114	105693	1.817	1.995
7) L1 AR-1016-5	5.856	4.864	56955	213337	0.543	3.129 #
8) L2 AR-1221-1	4.460	3.587	275160	116699	4.737	3.732
9) L2 AR-1221-2	4.550	3.658	1276997	1071869	30.128	45.173 #
10) L2 AR-1221-3	4.616	3.736	311911	70666	2.448	0.996 #
11) L3 AR-1232-1	4.616	3.736	311911	70666	3.116	1.236 #
12) L3 AR-1232-2	5.134	4.430	609020	103175	10.710	1.890 #
13) L3 AR-1232-3	5.423	4.610	517820	28717	5.257	1.007 #
14) L3 AR-1232-4	5.582	4.702	196114	236495	4.088	8.733 #
15) L3 AR-1232-5	5.659	4.864	767216	213337	19.075	7.332 #
16) L4 AR-1242-1	5.393	4.415	913992	175197	7.494	2.643 #
17) L4 AR-1242-2	5.423	4.430	517820	103175	2.891	1.058 #
18) L4 AR-1242-3	5.481	4.610	393436	28717	3.480	0.536 #
19) L4 AR-1242-4	5.582	4.702	196114	236495	2.197	4.288 #
20) L4 AR-1242-5	6.309	5.200	661907	364977	7.920	5.767 #
21) L5 AR-1248-1	5.393	4.415	913992	175197	10.224	3.528 #
22) L5 AR-1248-2	5.659	4.649	767216	105693	5.561	1.404 #
23) L5 AR-1248-3	5.877	4.702	75178	236495	0.530	3.045 #
24) L5 AR-1248-4	6.259	4.864	20640	213337	0.146	2.379 #
25) L5 AR-1248-5	6.309	5.240	661907	124923	4.815	1.558 #
26) L6 AR-1254-1	6.241	5.200	98027	364977	0.618	2.713 #
27) L6 AR-1254-2	6.452	5.359	52841	381457	0.226	3.228 #
28) L6 AR-1254-3	6.827	5.743	532484	96351	2.298	0.550 #
29) L6 AR-1254-4	7.082	5.960	83719	111520	0.564	1.099 #
30) L6 AR-1254-5	7.526	6.383	1118712	193328	6.726	1.283 #
31) L7 AR-1260-1	6.976	5.879	85890	268126	0.485	2.109 #
32) L7 AR-1260-2	7.250	6.040	677121	202638	3.414	1.319 #
33) L7 AR-1260-3	7.581	6.215	66300	1043851	0.469	7.491 #
34) L7 AR-1260-4	7.806	6.690	115808	362373	0.745	3.294 #
35) L7 AR-1260-5	8.113	6.916	453149	325956	1.519	1.270
36) L8 AR-1262-1	7.526	6.383	1118712	193328	8.201	2.387 #
37) L8 AR-1262-2	8.113	6.644	453149	58696	1.352	0.409 #
38) L8 AR-1262-3	8.388	7.190	80726	376089	0.365	3.099 #
39) L8 AR-1262-4	8.486	7.269	181742	827029	1.046	4.018 #
40) L8 AR-1262-5	9.105	7.754	211264	366340	1.799	4.164 #
41) L9 AR-1268-1	8.388	7.190	80726	376089	0.205	1.062 #

Data Path : Z:\pestpcbsrv\HPCHEM1\ECD_O\Data\P0042924\
 Data File : P0103283.D
 Signal(s) : Signal #1: ECD1A.ch Signal #2: ECD2B.ch
 Acq On : 29 Apr 2024 15:17
 Operator : YP/AJ
 Sample : PB160575BL
 Misc :
 ALS Vial : 7 Sample Multiplier: 1

Instrument :
 ECD_O
 ClientSampleId :
 PB160575BL

Integration File signal 1: autoint1.e
 Integration File signal 2: autoint2.e
 Quant Time: Apr 30 01:29:11 2024
 Quant Method : Z:\pestpcbsrv\HPCHEM1\ECD_O\methods\P0042224.M
 Quant Title : GC EXTRACTABLES
 QLast Update : Tue Apr 23 02:20:10 2024
 Response via : Initial Calibration
 Integrator: ChemStation

Volume Inj. : 2 µl
 Signal #1 Phase : ZB-MR1 Signal #2 Phase: ZB-MR2
 Signal #1 Info : 30Mx0.32mmx 0.50µ Signal #2 Info : 30M x 0.32mm x 0.25µm

	Compound	RT#1	RT#2	Resp#1	Resp#2	ng/ml	ng/ml
42)	L9 AR-1268-2	8.486	7.269	181742	827029	0.487	2.601 #
43)	L9 AR-1268-3	8.695	7.451	572478	252018	1.728	0.928 #
44)	L9 AR-1268-4	9.105	7.998	211264	402043	1.620	0.555 #
45)	L9 AR-1268-5	9.453	8.217	124891	36602804	0.119	118.074 #

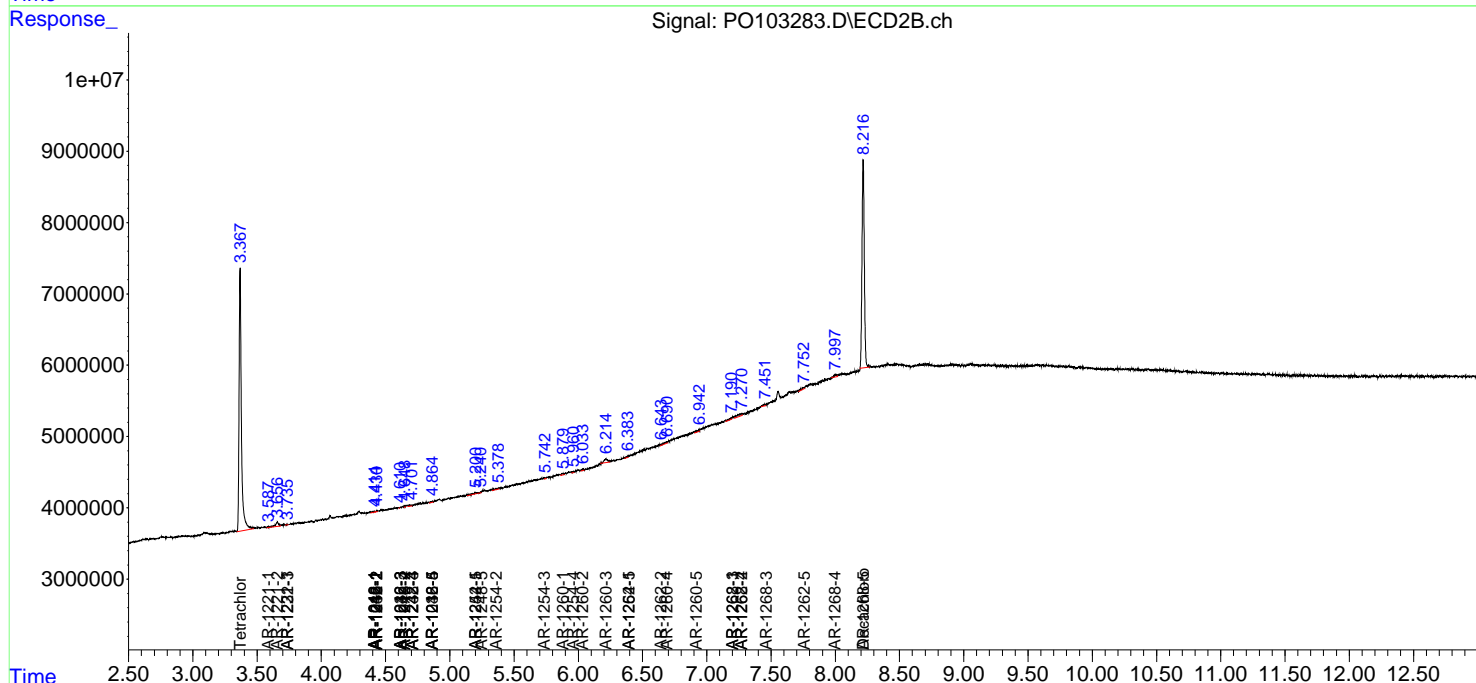
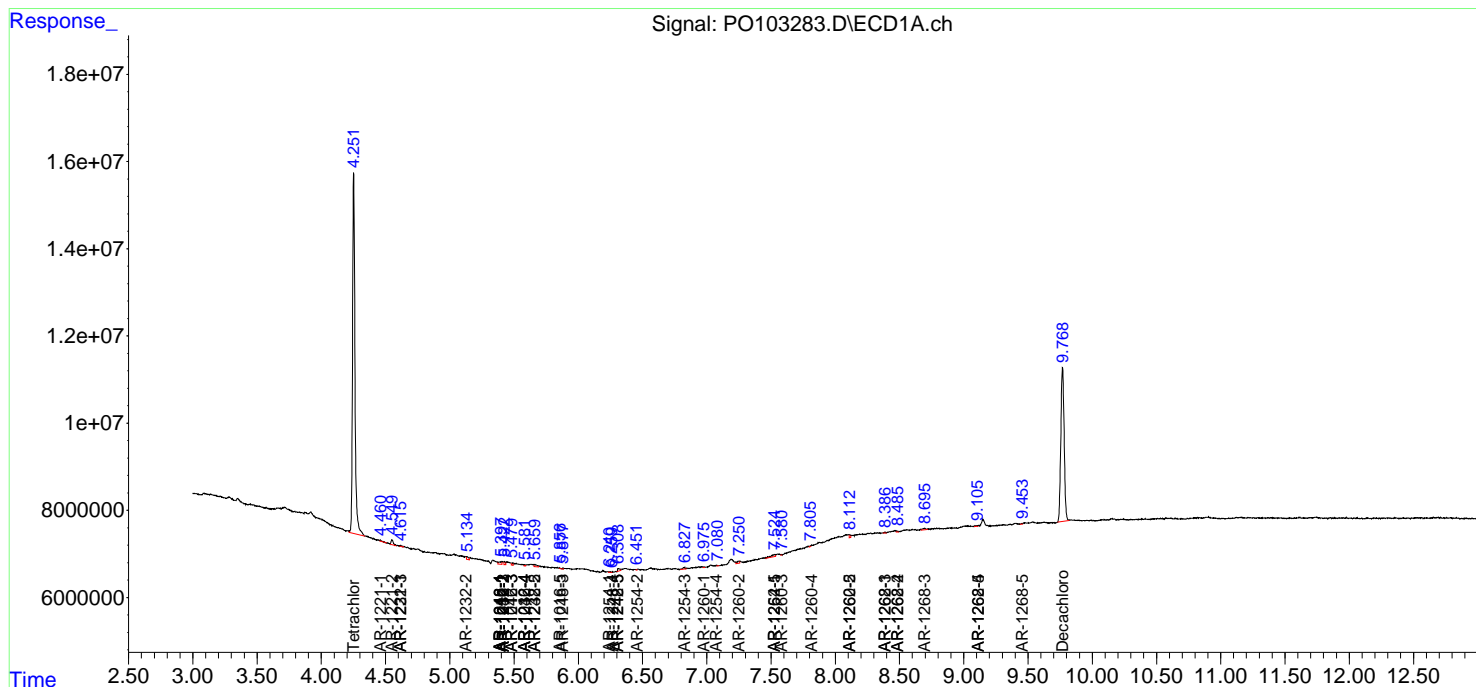
(f)=RT Delta > 1/2 Window (#)=Amounts differ by > 25% (m)=manual int.

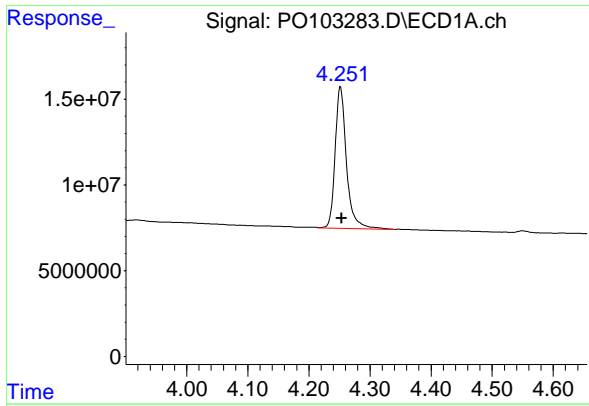
Data Path : Z:\pestpcbsrv\HPCHEM1\ECD_O\Data\PO042924\
 Data File : PO103283.D
 Signal(s) : Signal #1: ECD1A.ch Signal #2: ECD2B.ch
 Acq On : 29 Apr 2024 15:17
 Operator : YP/AJ
 Sample : PB160575BL
 Misc :
 ALS Vial : 7 Sample Multiplier: 1

Instrument :
 ECD_O
 ClientSampleId :
 PB160575BL

Integration File signal 1: autoint1.e
 Integration File signal 2: autoint2.e
 Quant Time: Apr 30 01:29:11 2024
 Quant Method : Z:\pestpcbsrv\HPCHEM1\ECD_O\methods\PO042224.M
 Quant Title : GC EXTRACTABLES
 QLast Update : Tue Apr 23 02:20:10 2024
 Response via : Initial Calibration
 Integrator: ChemStation

Volume Inj. : 2 µl
 Signal #1 Phase : ZB-MR1 Signal #2 Phase: ZB-MR2
 Signal #1 Info : 30Mx0.32mmx 0.50µm Signal #2 Info : 30M x 0.32mm x 0.25µm

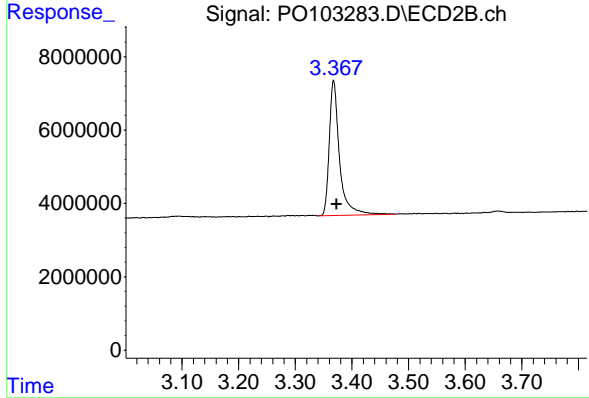




#1 Tetrachloro-m-xylene

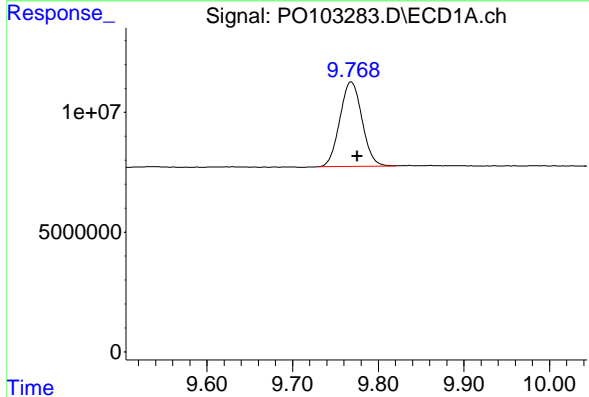
R.T.: 4.252 min
 Delta R.T.: -0.002 min
 Response: 106859457
 Conc: 21.19 ng/ml

Instrument :
 ECD_O
 ClientSampleId :
 PB160575BL



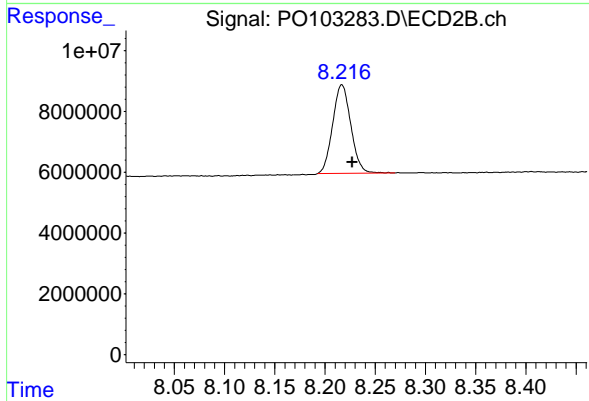
#1 Tetrachloro-m-xylene

R.T.: 3.368 min
 Delta R.T.: -0.006 min
 Response: 46384685
 Conc: 16.76 ng/ml



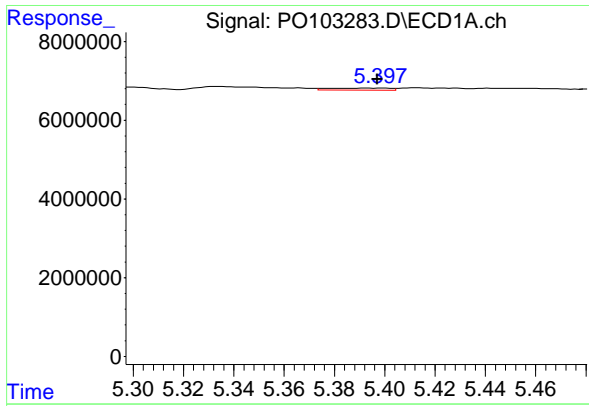
#2 Decachlorobiphenyl

R.T.: 9.768 min
 Delta R.T.: -0.007 min
 Response: 63546486
 Conc: 21.88 ng/ml



#2 Decachlorobiphenyl

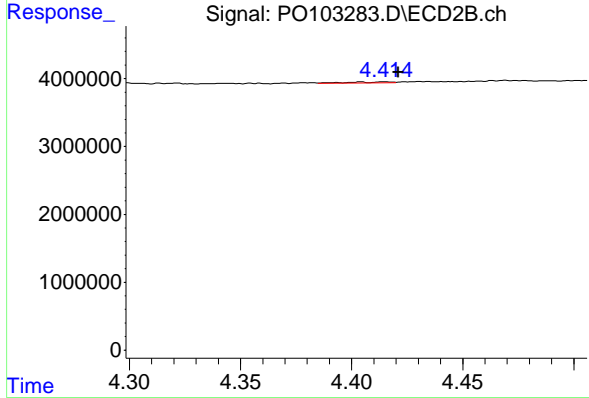
R.T.: 8.217 min
 Delta R.T.: -0.010 min
 Response: 36602804
 Conc: 21.32 ng/ml



#3 AR-1016-1

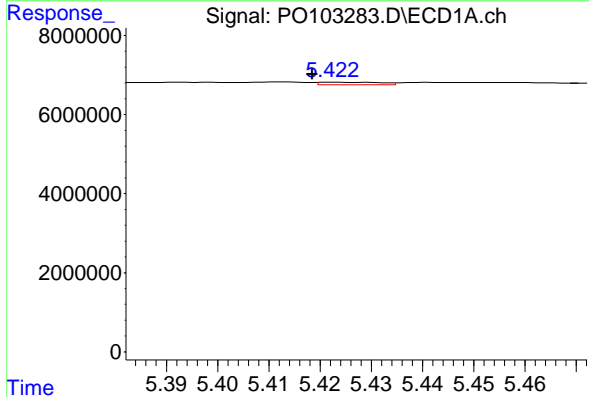
R.T.: 5.393 min
 Delta R.T.: -0.004 min
 Response: 913992
 Conc: 6.23 ng/ml

Instrument :
 ECD_O
 ClientSampleId :
 PB160575BL



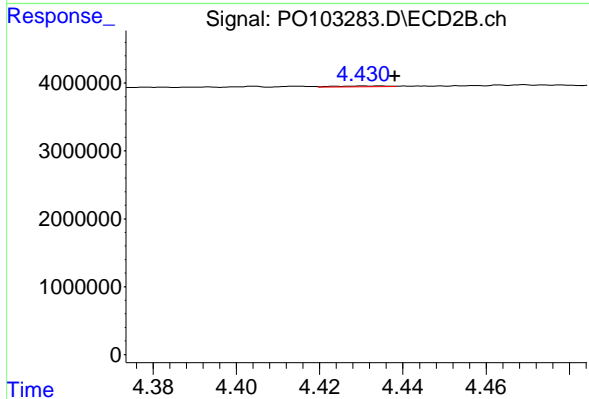
#3 AR-1016-1

R.T.: 4.415 min
 Delta R.T.: -0.006 min
 Response: 175197
 Conc: 2.23 ng/ml



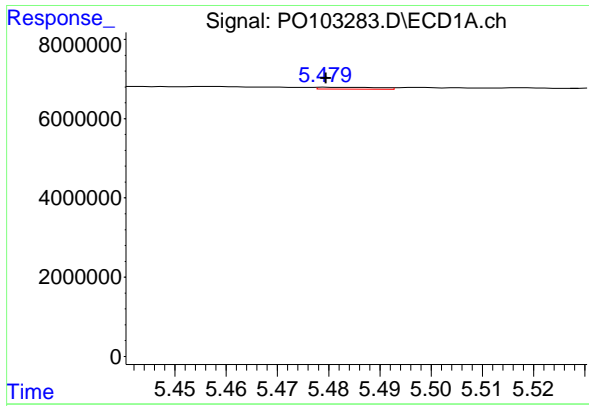
#4 AR-1016-2

R.T.: 5.423 min
 Delta R.T.: 0.004 min
 Response: 517820
 Conc: 2.40 ng/ml



#4 AR-1016-2

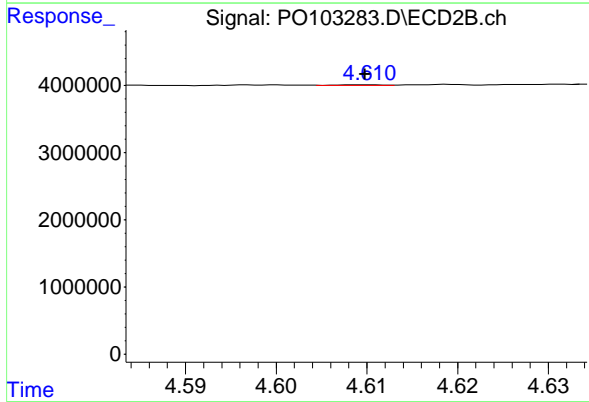
R.T.: 4.430 min
 Delta R.T.: -0.008 min
 Response: 103175
 Conc: 0.88 ng/ml



#5 AR-1016-3

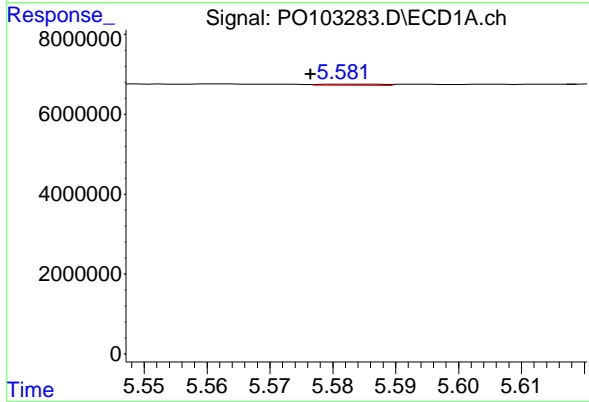
R.T.: 5.481 min
 Delta R.T.: 0.001 min
 Response: 393436
 Conc: 2.89 ng/ml

Instrument :
 ECD_O
 ClientSampleId :
 PB160575BL



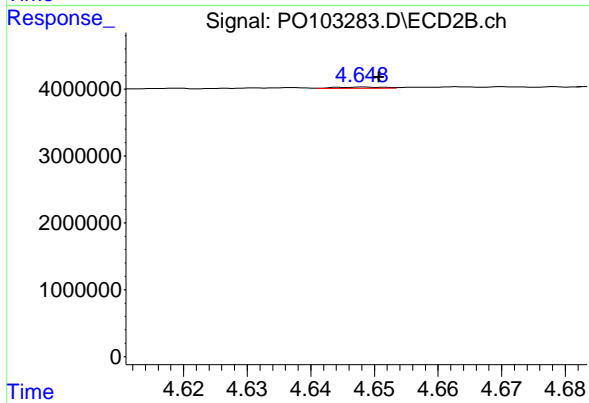
#5 AR-1016-3

R.T.: 4.610 min
 Delta R.T.: 0.000 min
 Response: 28717
 Conc: 0.46 ng/ml



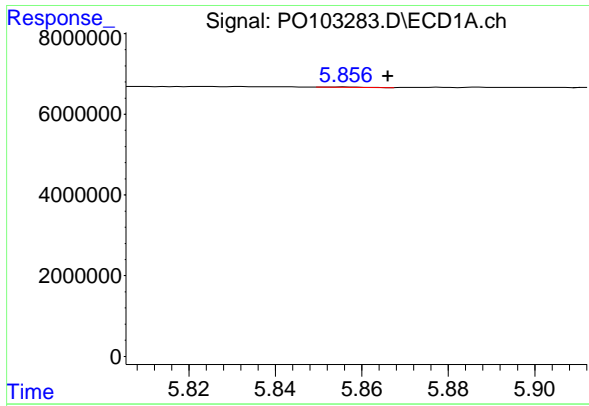
#6 AR-1016-4

R.T.: 5.582 min
 Delta R.T.: 0.006 min
 Response: 196114
 Conc: 1.82 ng/ml



#6 AR-1016-4

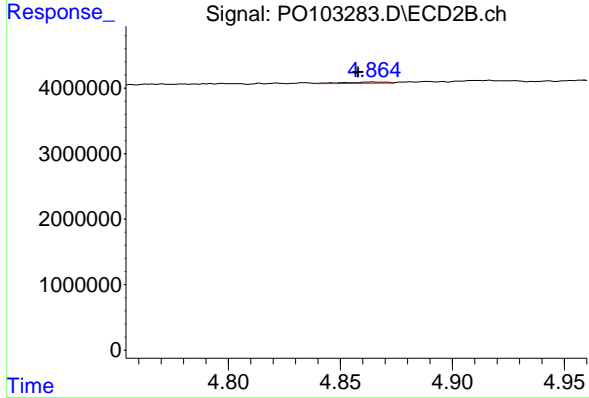
R.T.: 4.649 min
 Delta R.T.: -0.002 min
 Response: 105693
 Conc: 2.00 ng/ml



#7 AR-1016-5

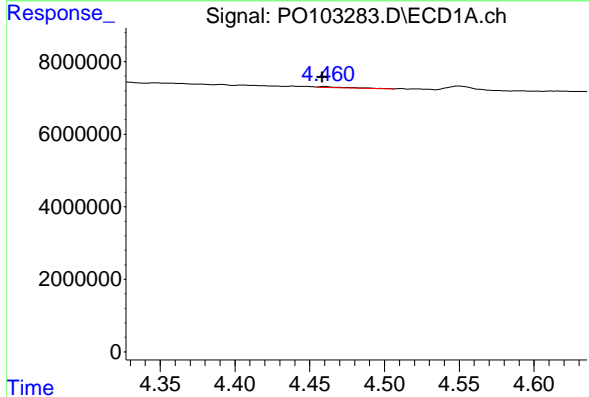
R.T.: 5.856 min
 Delta R.T.: -0.010 min
 Response: 56955
 Conc: 0.54 ng/ml

Instrument :
 ECD_O
 ClientSampleId :
 PB160575BL



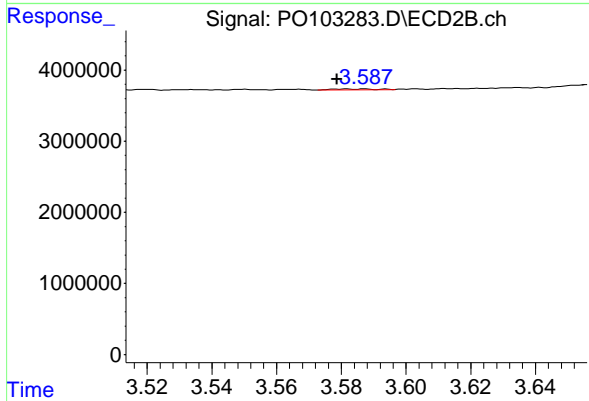
#7 AR-1016-5

R.T.: 4.864 min
 Delta R.T.: 0.006 min
 Response: 213337
 Conc: 3.13 ng/ml



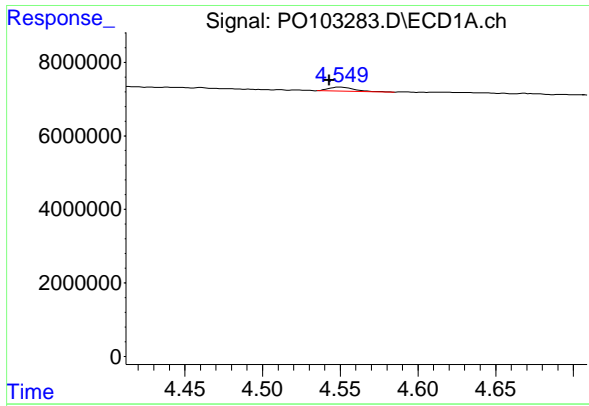
#8 AR-1221-1

R.T.: 4.460 min
 Delta R.T.: 0.002 min
 Response: 275160
 Conc: 4.74 ng/ml



#8 AR-1221-1

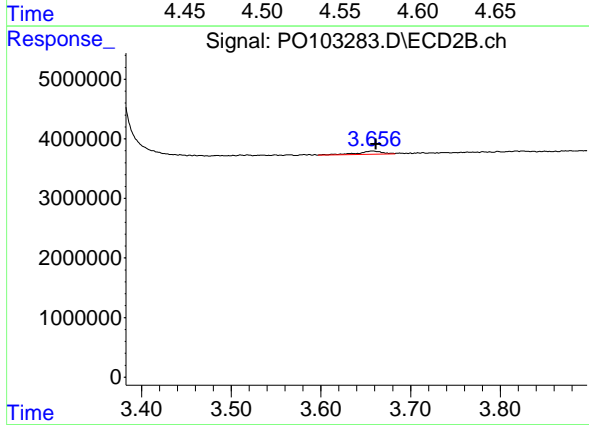
R.T.: 3.587 min
 Delta R.T.: 0.008 min
 Response: 116699
 Conc: 3.73 ng/ml



#9 AR-1221-2

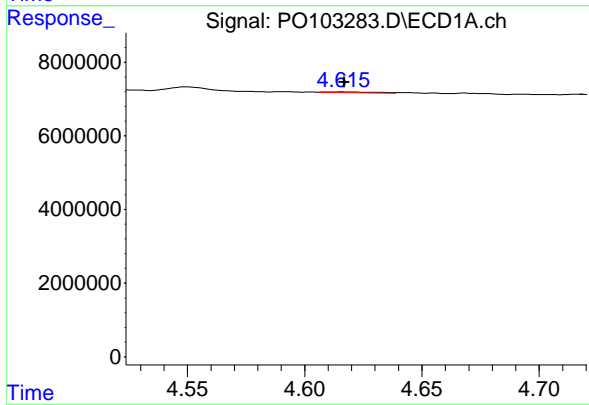
R.T.: 4.550 min
 Delta R.T.: 0.007 min
 Response: 1276997
 Conc: 30.13 ng/ml

Instrument :
 ECD_O
 ClientSampleId :
 PB160575BL



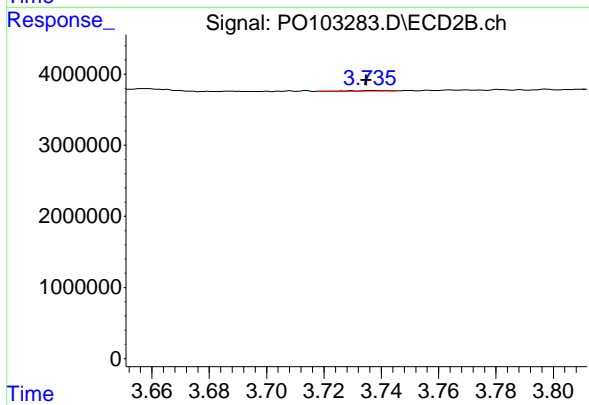
#9 AR-1221-2

R.T.: 3.658 min
 Delta R.T.: -0.004 min
 Response: 1071869
 Conc: 45.17 ng/ml



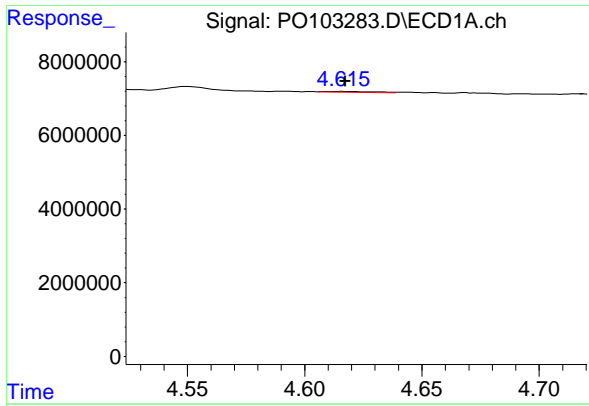
#10 AR-1221-3

R.T.: 4.616 min
 Delta R.T.: 0.000 min
 Response: 311911
 Conc: 2.45 ng/ml



#10 AR-1221-3

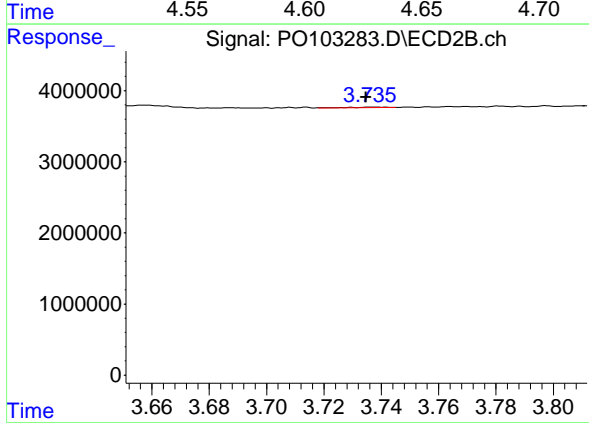
R.T.: 3.736 min
 Delta R.T.: 0.002 min
 Response: 70666
 Conc: 1.00 ng/ml



#11 AR-1232-1

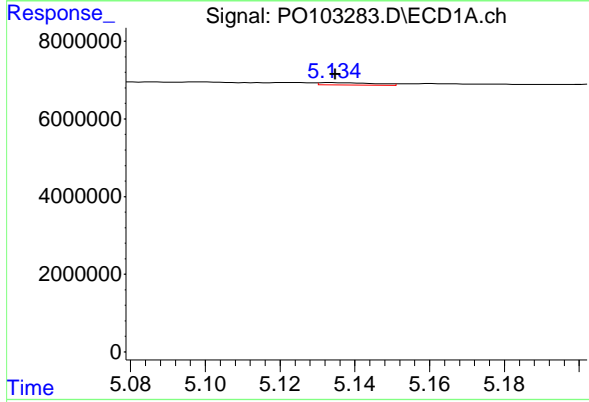
R.T.: 4.616 min
 Delta R.T.: -0.001 min
 Response: 311911
 Conc: 3.12 ng/ml

Instrument :
 ECD_O
 ClientSampleId :
 PB160575BL



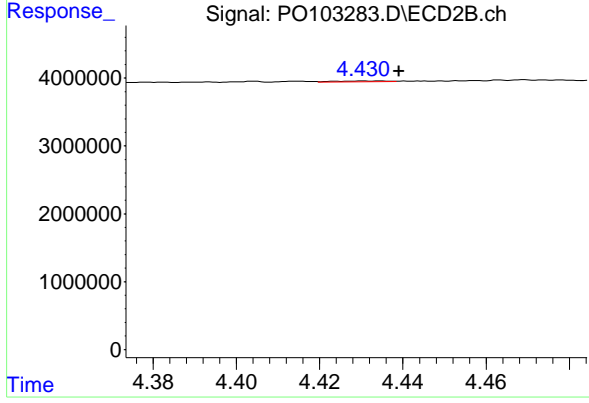
#11 AR-1232-1

R.T.: 3.736 min
 Delta R.T.: 0.002 min
 Response: 70666
 Conc: 1.24 ng/ml



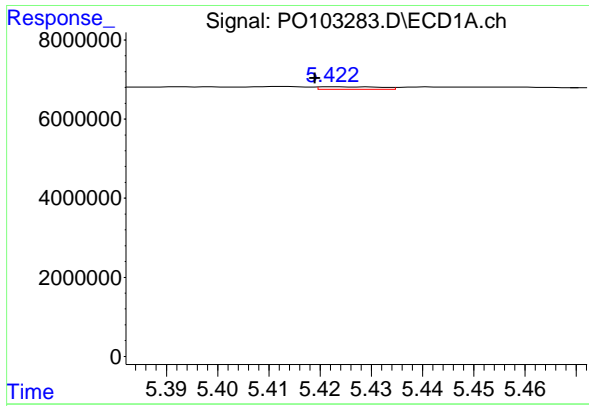
#12 AR-1232-2

R.T.: 5.134 min
 Delta R.T.: 0.000 min
 Response: 609020
 Conc: 10.71 ng/ml



#12 AR-1232-2

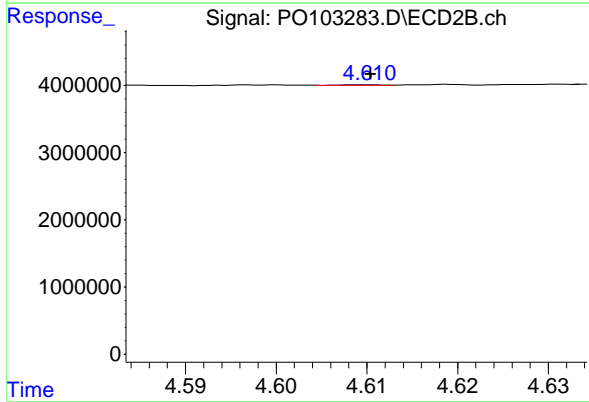
R.T.: 4.430 min
 Delta R.T.: -0.009 min
 Response: 103175
 Conc: 1.89 ng/ml



#13 AR-1232-3

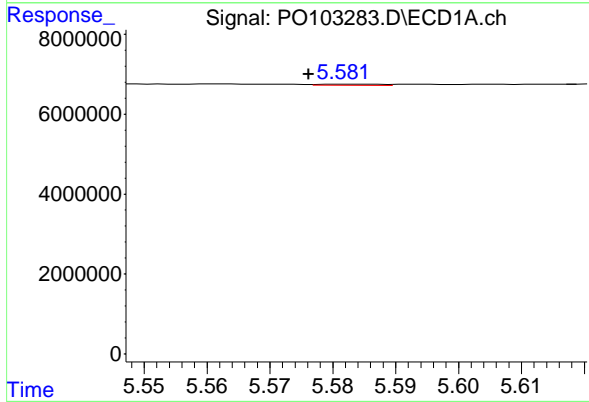
R.T.: 5.423 min
 Delta R.T.: 0.004 min
 Response: 517820
 Conc: 5.26 ng/ml

Instrument :
 ECD_O
 ClientSampleId :
 PB160575BL



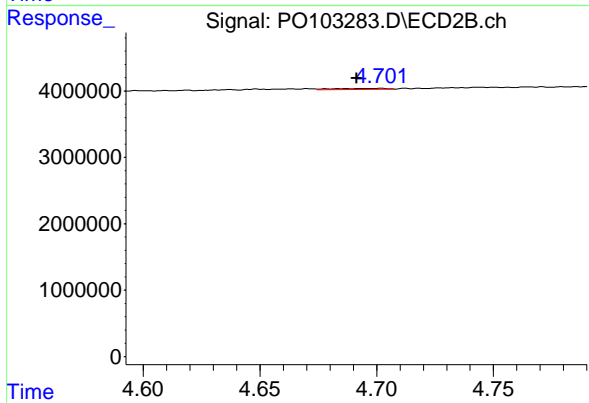
#13 AR-1232-3

R.T.: 4.610 min
 Delta R.T.: 0.000 min
 Response: 28717
 Conc: 1.01 ng/ml



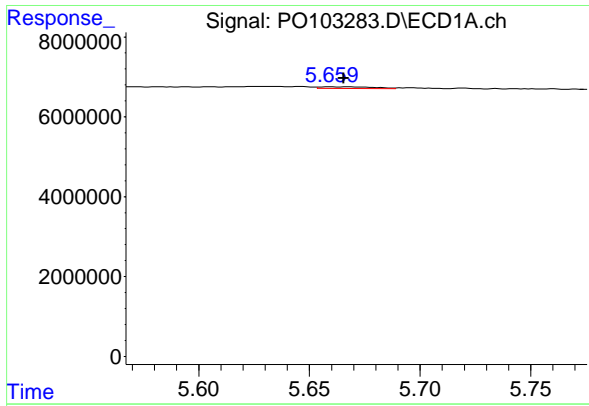
#14 AR-1232-4

R.T.: 5.582 min
 Delta R.T.: 0.006 min
 Response: 196114
 Conc: 4.09 ng/ml



#14 AR-1232-4

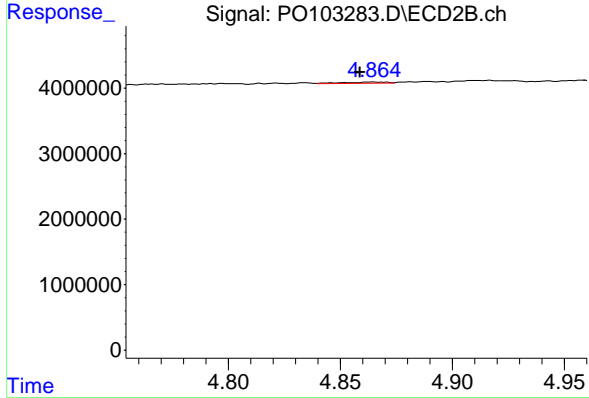
R.T.: 4.702 min
 Delta R.T.: 0.010 min
 Response: 236495
 Conc: 8.73 ng/ml



#15 AR-1232-5

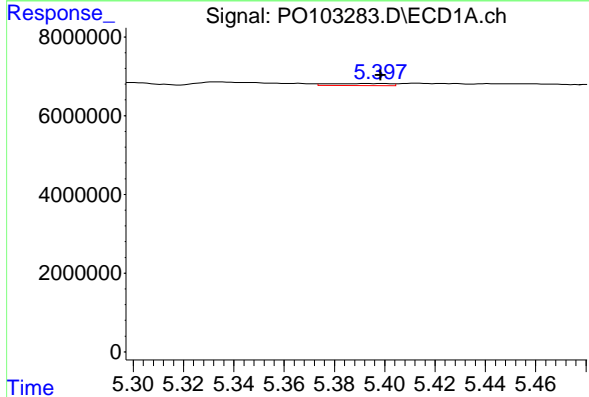
R.T.: 5.659 min
 Delta R.T.: -0.006 min
 Response: 767216
 Conc: 19.07 ng/ml

Instrument :
 ECD_O
 ClientSampleId :
 PB160575BL



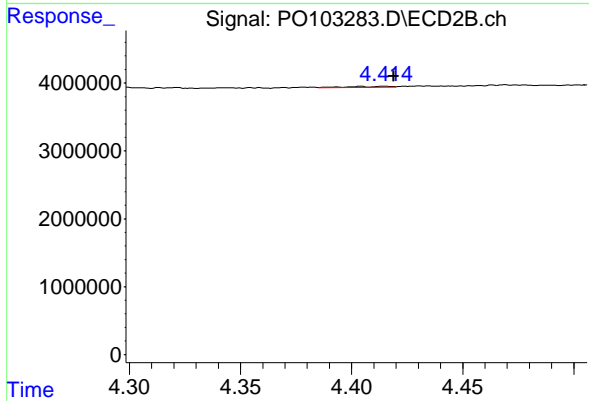
#15 AR-1232-5

R.T.: 4.864 min
 Delta R.T.: 0.005 min
 Response: 213337
 Conc: 7.33 ng/ml



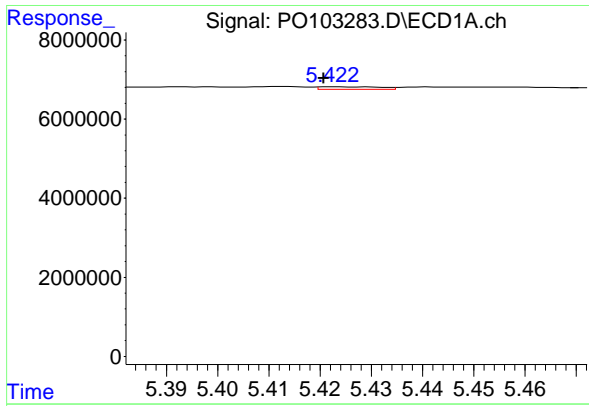
#16 AR-1242-1

R.T.: 5.393 min
 Delta R.T.: -0.006 min
 Response: 913992
 Conc: 7.49 ng/ml



#16 AR-1242-1

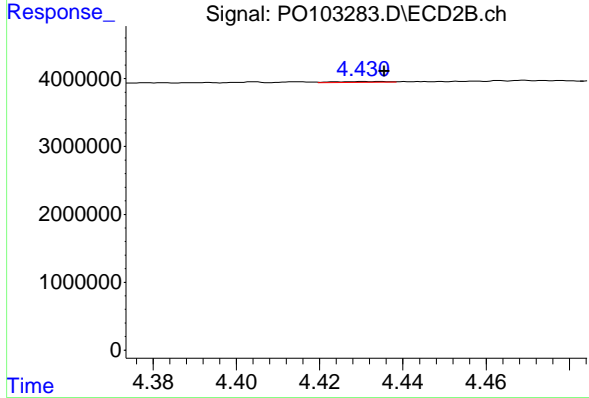
R.T.: 4.415 min
 Delta R.T.: -0.004 min
 Response: 175197
 Conc: 2.64 ng/ml



#17 AR-1242-2

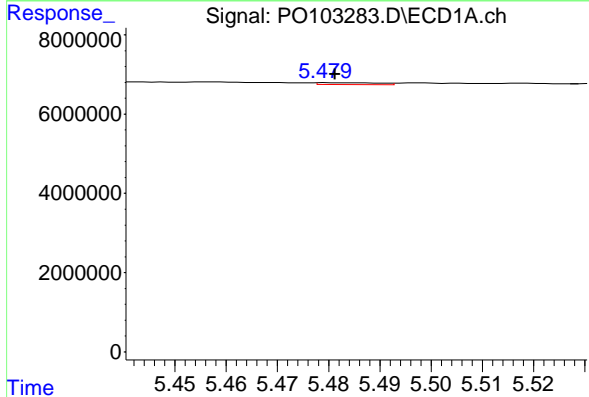
R.T.: 5.423 min
 Delta R.T.: 0.002 min
 Response: 517820
 Conc: 2.89 ng/ml

Instrument :
 ECD_O
 ClientSampleId :
 PB160575BL



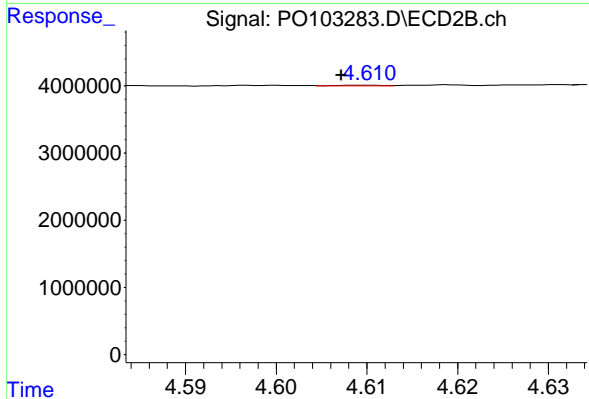
#17 AR-1242-2

R.T.: 4.430 min
 Delta R.T.: -0.005 min
 Response: 103175
 Conc: 1.06 ng/ml



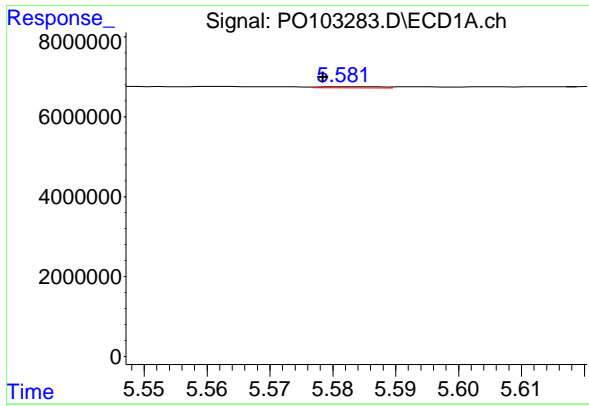
#18 AR-1242-3

R.T.: 5.481 min
 Delta R.T.: 0.000 min
 Response: 393436
 Conc: 3.48 ng/ml



#18 AR-1242-3

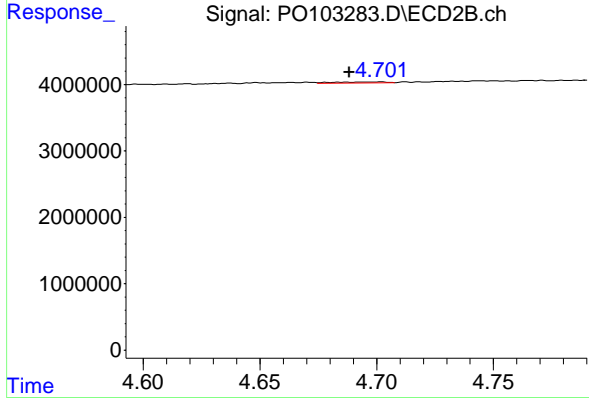
R.T.: 4.610 min
 Delta R.T.: 0.003 min
 Response: 28717
 Conc: 0.54 ng/ml



#19 AR-1242-4

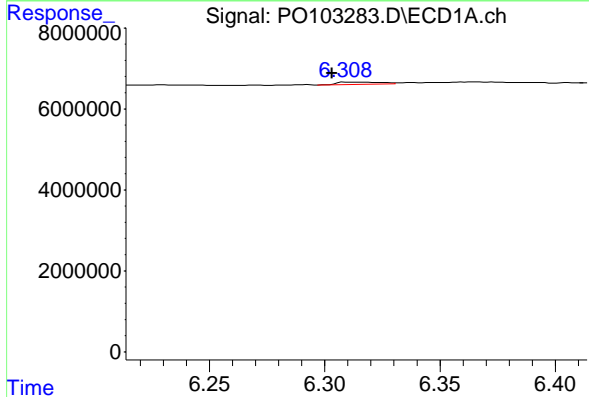
R.T.: 5.582 min
 Delta R.T.: 0.004 min
 Response: 196114
 Conc: 2.20 ng/ml

Instrument :
 ECD_O
 ClientSampleId :
 PB160575BL



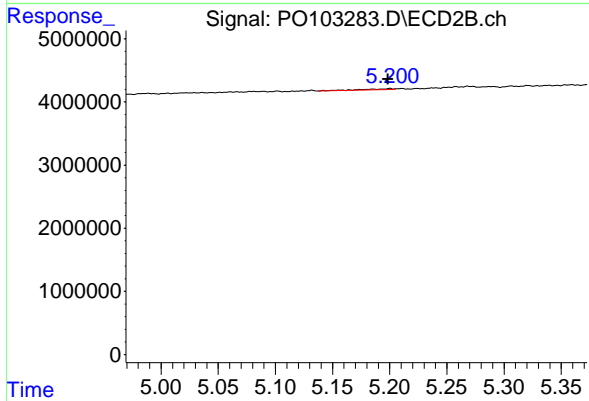
#19 AR-1242-4

R.T.: 4.702 min
 Delta R.T.: 0.013 min
 Response: 236495
 Conc: 4.29 ng/ml



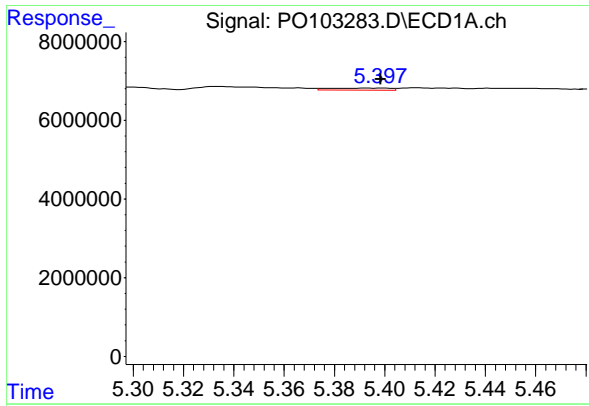
#20 AR-1242-5

R.T.: 6.309 min
 Delta R.T.: 0.006 min
 Response: 661907
 Conc: 7.92 ng/ml



#20 AR-1242-5

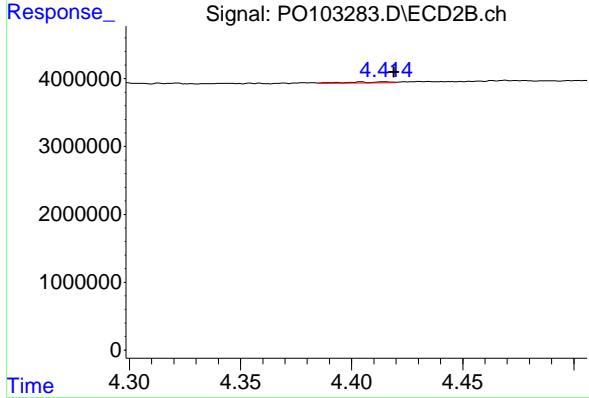
R.T.: 5.200 min
 Delta R.T.: 0.002 min
 Response: 364977
 Conc: 5.77 ng/ml



#21 AR-1248-1

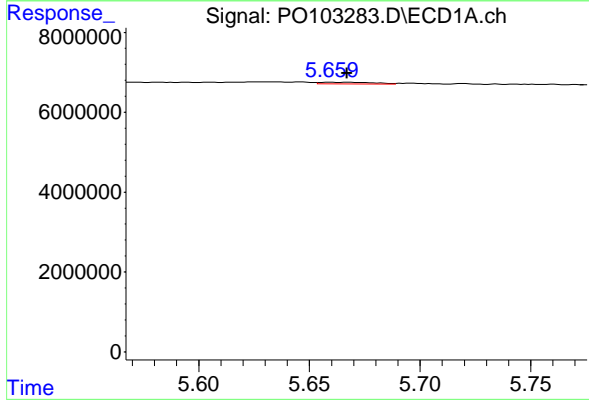
R.T.: 5.393 min
 Delta R.T.: -0.006 min
 Response: 913992
 Conc: 10.22 ng/ml

Instrument :
 ECD_O
 ClientSampleId :
 PB160575BL



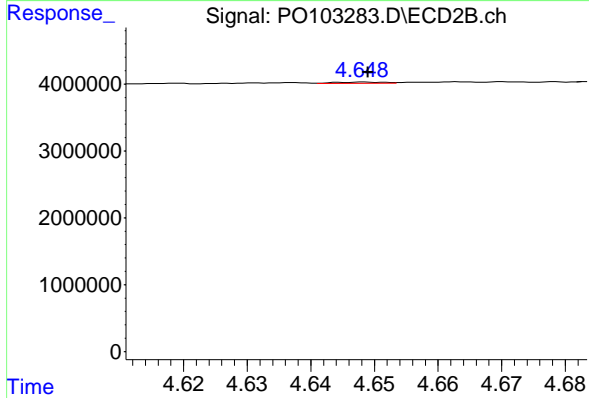
#21 AR-1248-1

R.T.: 4.415 min
 Delta R.T.: -0.004 min
 Response: 175197
 Conc: 3.53 ng/ml



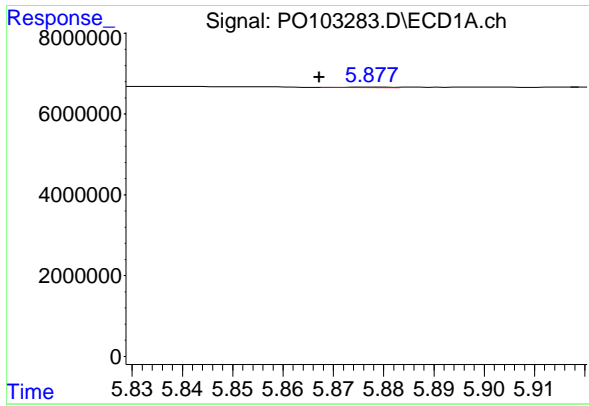
#22 AR-1248-2

R.T.: 5.659 min
 Delta R.T.: -0.007 min
 Response: 767216
 Conc: 5.56 ng/ml



#22 AR-1248-2

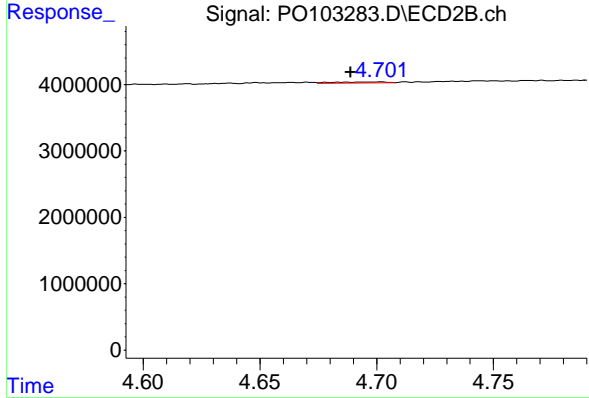
R.T.: 4.649 min
 Delta R.T.: 0.000 min
 Response: 105693
 Conc: 1.40 ng/ml



#23 AR-1248-3

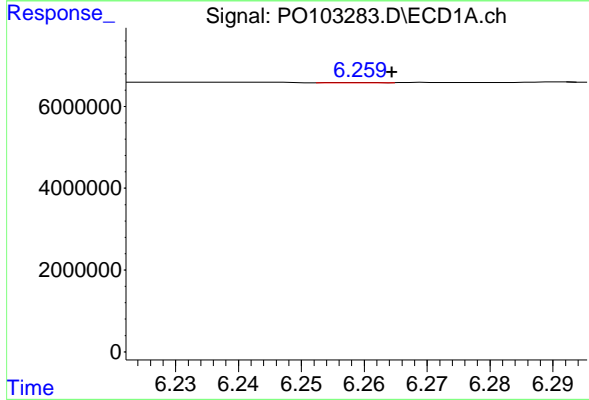
R.T.: 5.877 min
 Delta R.T.: 0.010 min
 Response: 75178
 Conc: 0.53 ng/ml

Instrument :
 ECD_O
 ClientSampleId :
 PB160575BL



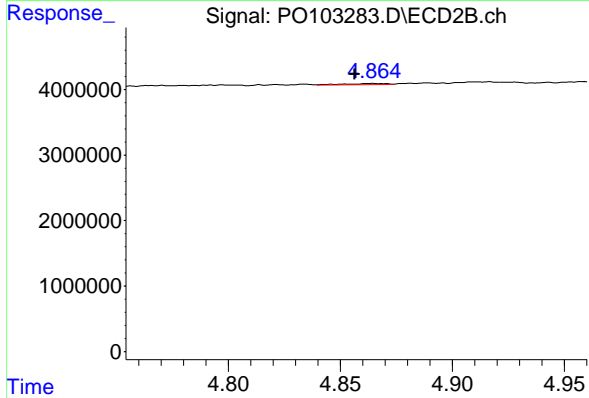
#23 AR-1248-3

R.T.: 4.702 min
 Delta R.T.: 0.013 min
 Response: 236495
 Conc: 3.04 ng/ml



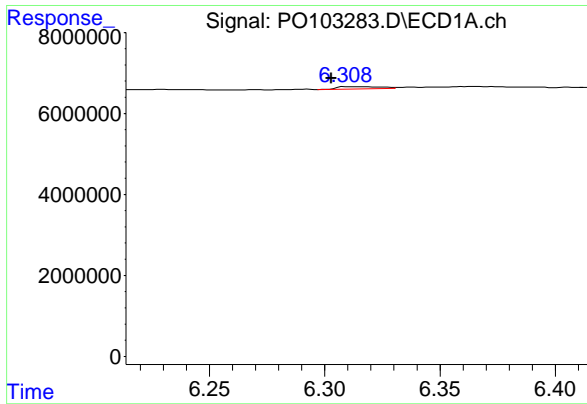
#24 AR-1248-4

R.T.: 6.259 min
 Delta R.T.: -0.005 min
 Response: 20640
 Conc: 0.15 ng/ml



#24 AR-1248-4

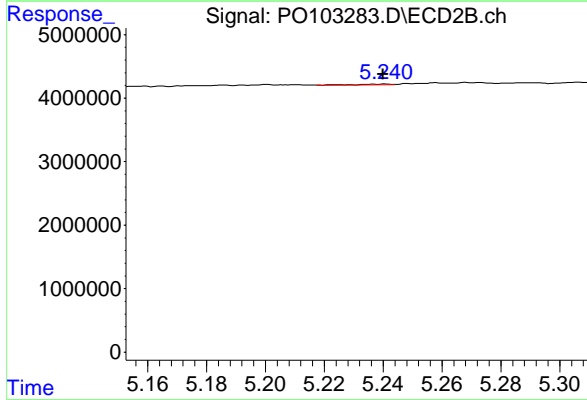
R.T.: 4.864 min
 Delta R.T.: 0.008 min
 Response: 213337
 Conc: 2.38 ng/ml



#25 AR-1248-5

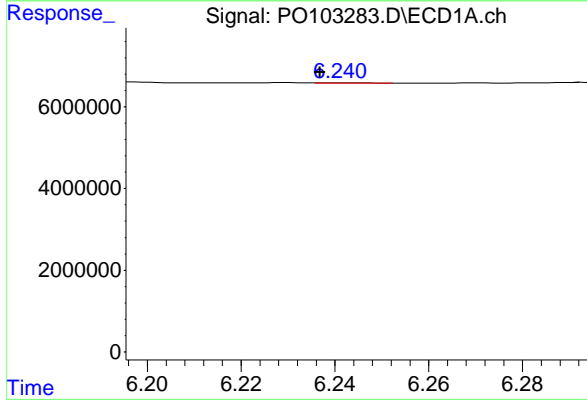
R.T.: 6.309 min
 Delta R.T.: 0.007 min
 Response: 661907
 Conc: 4.81 ng/ml

Instrument :
 ECD_O
 ClientSampleId :
 PB160575BL



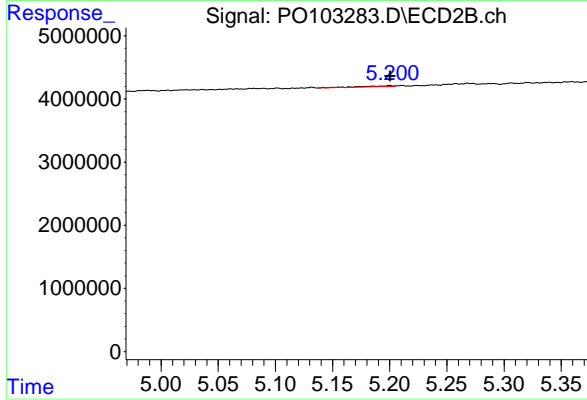
#25 AR-1248-5

R.T.: 5.240 min
 Delta R.T.: 0.000 min
 Response: 124923
 Conc: 1.56 ng/ml



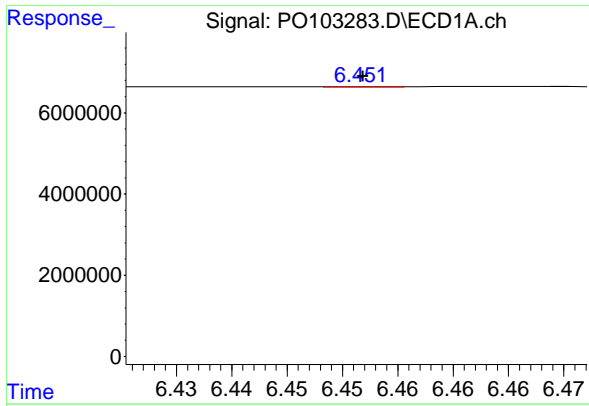
#26 AR-1254-1

R.T.: 6.241 min
 Delta R.T.: 0.004 min
 Response: 98027
 Conc: 0.62 ng/ml



#26 AR-1254-1

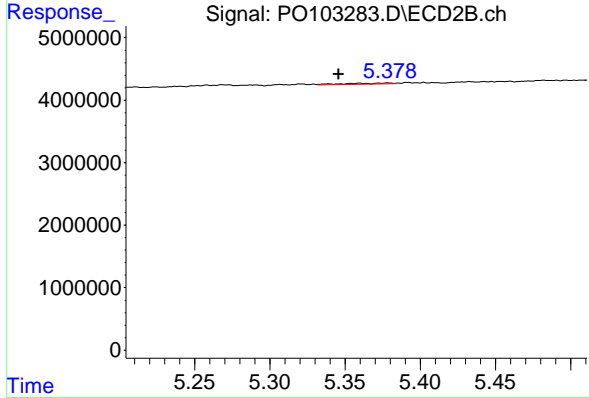
R.T.: 5.200 min
 Delta R.T.: 0.000 min
 Response: 364977
 Conc: 2.71 ng/ml



#27 AR-1254-2

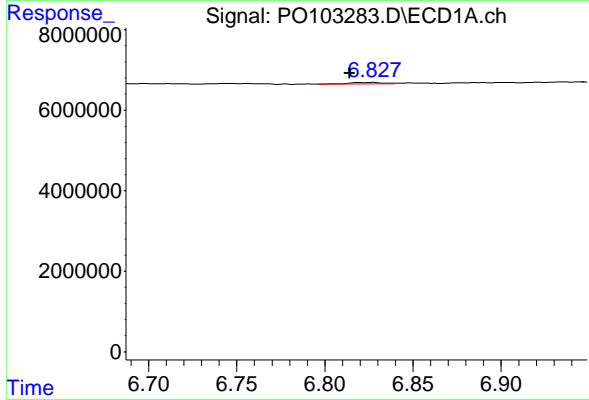
R.T.: 6.452 min
 Delta R.T.: 0.000 min
 Response: 52841
 Conc: 0.23 ng/ml

Instrument :
 ECD_O
 ClientSampleId :
 PB160575BL



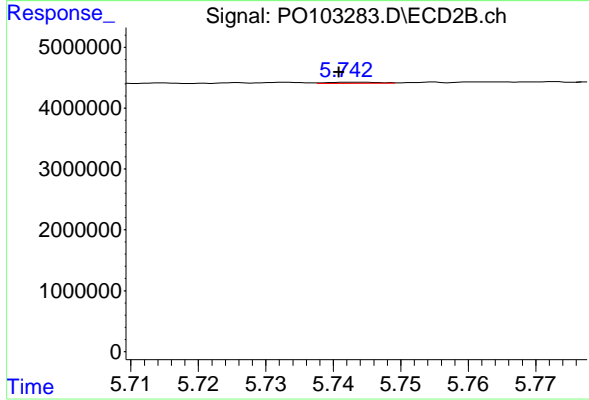
#27 AR-1254-2

R.T.: 5.359 min
 Delta R.T.: 0.014 min
 Response: 381457
 Conc: 3.23 ng/ml



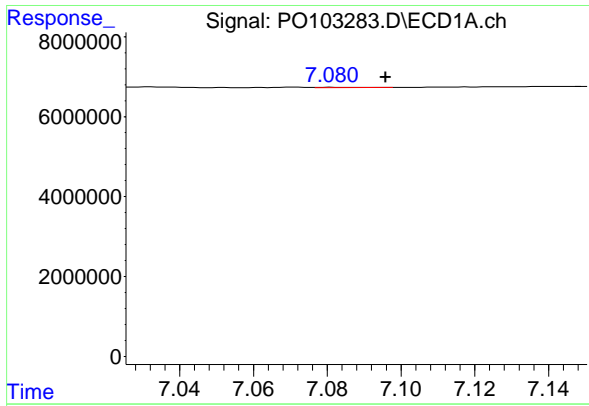
#28 AR-1254-3

R.T.: 6.827 min
 Delta R.T.: 0.013 min
 Response: 532484
 Conc: 2.30 ng/ml



#28 AR-1254-3

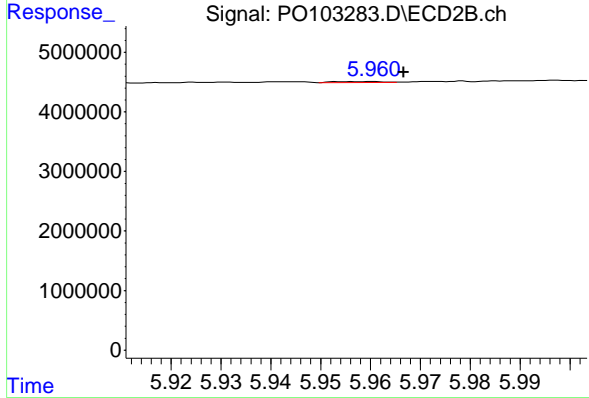
R.T.: 5.743 min
 Delta R.T.: 0.002 min
 Response: 96351
 Conc: 0.55 ng/ml



#29 AR-1254-4

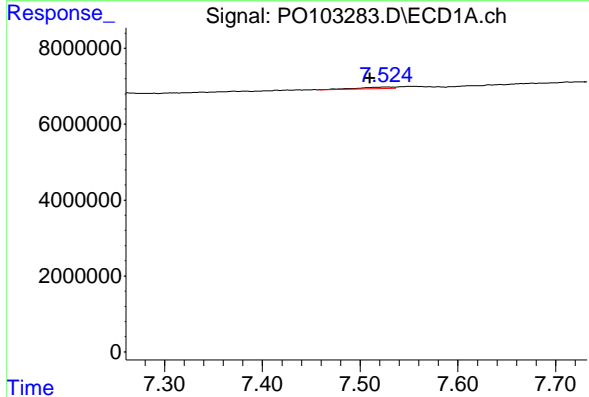
R.T.: 7.082 min
 Delta R.T.: -0.014 min
 Response: 83719
 Conc: 0.56 ng/ml

Instrument :
 ECD_O
 ClientSampleId :
 PB160575BL



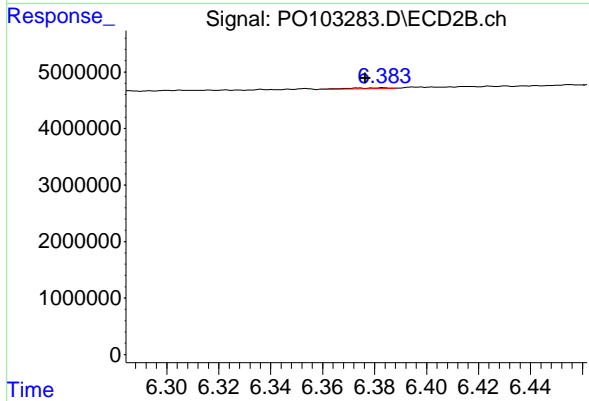
#29 AR-1254-4

R.T.: 5.960 min
 Delta R.T.: -0.007 min
 Response: 111520
 Conc: 1.10 ng/ml



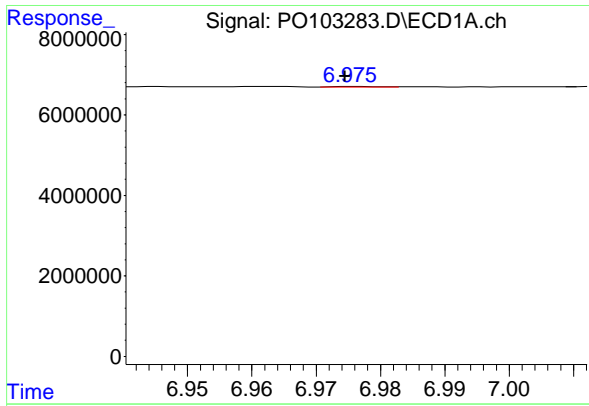
#30 AR-1254-5

R.T.: 7.526 min
 Delta R.T.: 0.016 min
 Response: 1118712
 Conc: 6.73 ng/ml



#30 AR-1254-5

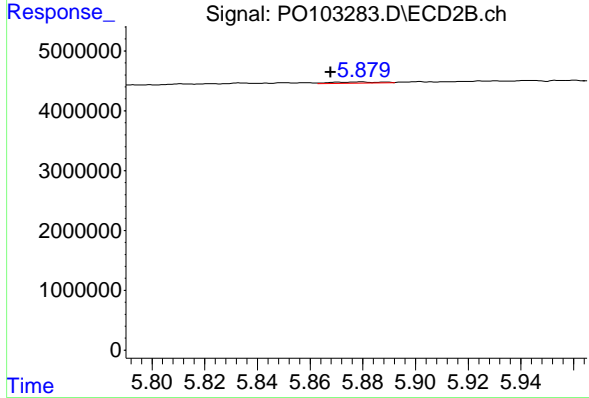
R.T.: 6.383 min
 Delta R.T.: 0.007 min
 Response: 193328
 Conc: 1.28 ng/ml



#31 AR-1260-1

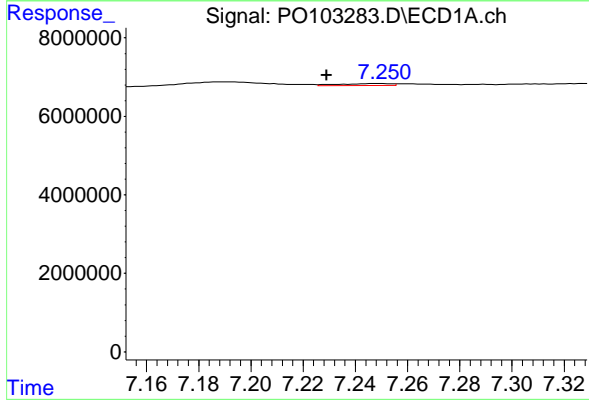
R.T.: 6.976 min
 Delta R.T.: 0.001 min
 Response: 85890
 Conc: 0.48 ng/ml

Instrument :
 ECD_O
 ClientSampleId :
 PB160575BL



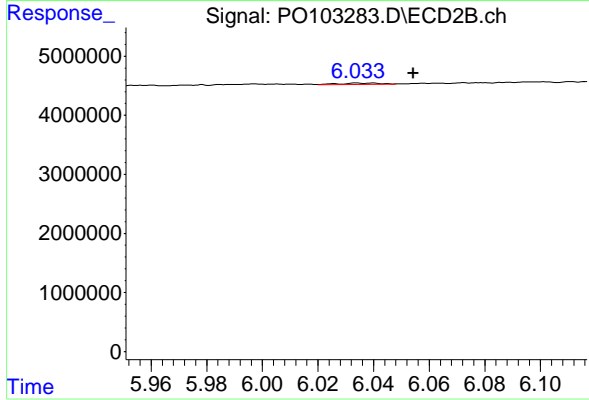
#31 AR-1260-1

R.T.: 5.879 min
 Delta R.T.: 0.011 min
 Response: 268126
 Conc: 2.11 ng/ml



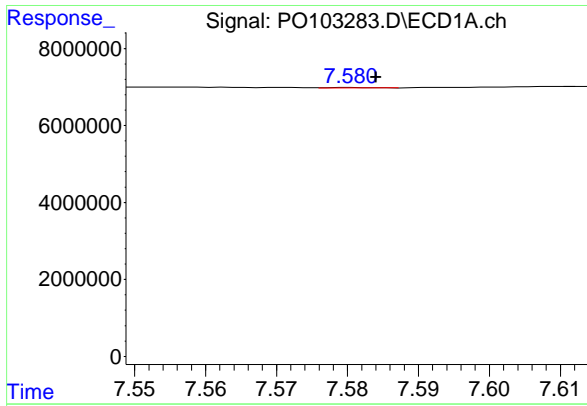
#32 AR-1260-2

R.T.: 7.250 min
 Delta R.T.: 0.021 min
 Response: 677121
 Conc: 3.41 ng/ml



#32 AR-1260-2

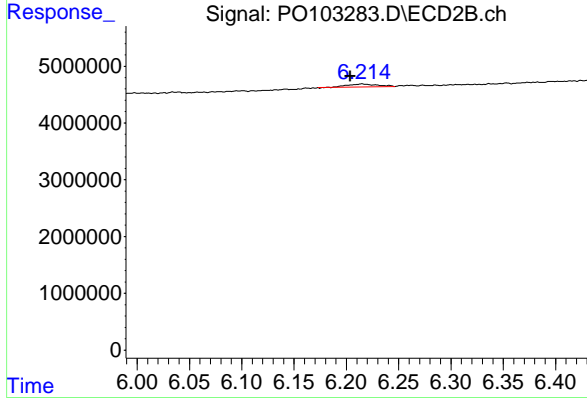
R.T.: 6.040 min
 Delta R.T.: -0.015 min
 Response: 202638
 Conc: 1.32 ng/ml



#33 AR-1260-3

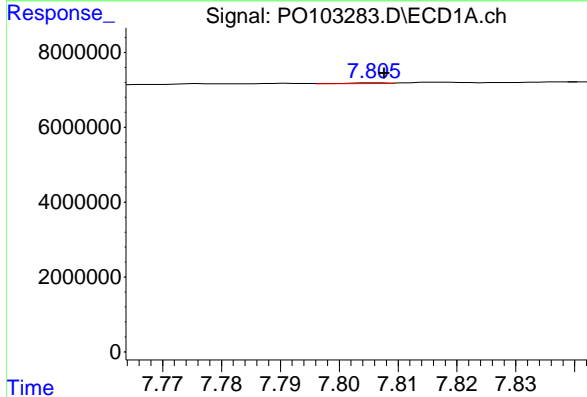
R.T.: 7.581 min
 Delta R.T.: -0.003 min
 Response: 66300
 Conc: 0.47 ng/ml

Instrument :
 ECD_O
 ClientSampleId :
 PB160575BL



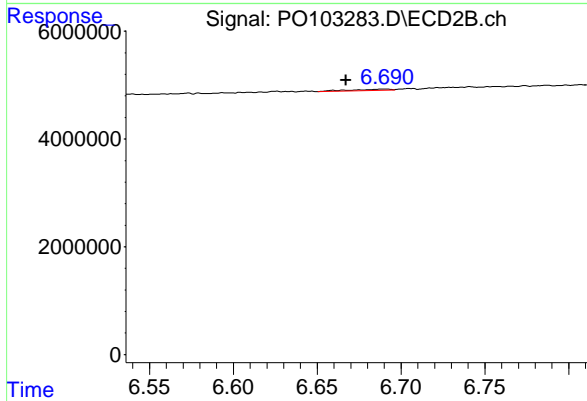
#33 AR-1260-3

R.T.: 6.215 min
 Delta R.T.: 0.011 min
 Response: 1043851
 Conc: 7.49 ng/ml



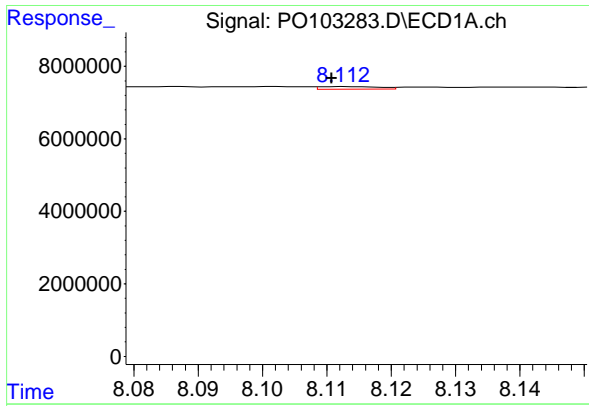
#34 AR-1260-4

R.T.: 7.806 min
 Delta R.T.: -0.001 min
 Response: 115808
 Conc: 0.74 ng/ml



#34 AR-1260-4

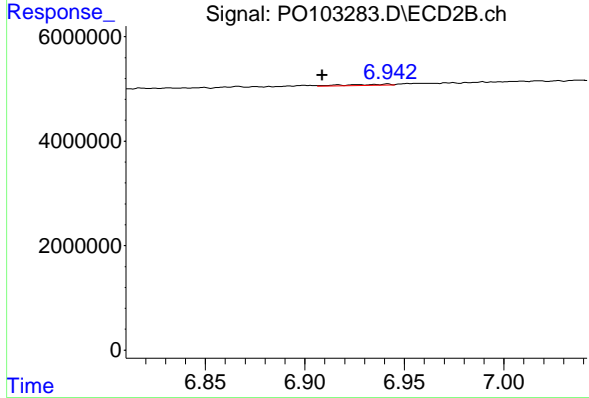
R.T.: 6.690 min
 Delta R.T.: 0.023 min
 Response: 362373
 Conc: 3.29 ng/ml



#35 AR-1260-5

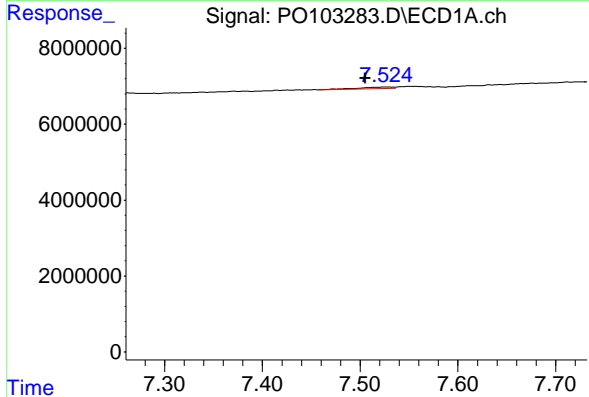
R.T.: 8.113 min
 Delta R.T.: 0.002 min
 Response: 453149
 Conc: 1.52 ng/ml

Instrument :
 ECD_O
 ClientSampleId :
 PB160575BL



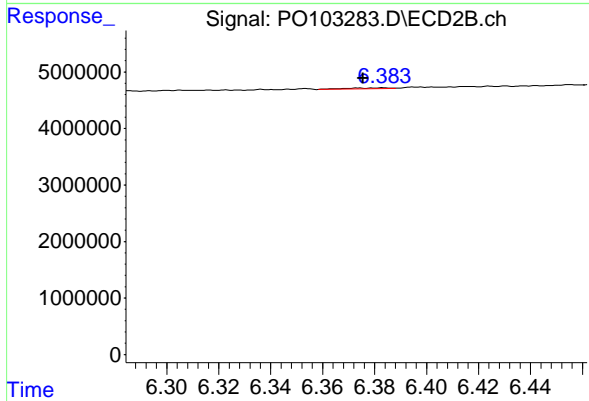
#35 AR-1260-5

R.T.: 6.916 min
 Delta R.T.: 0.008 min
 Response: 325956
 Conc: 1.27 ng/ml



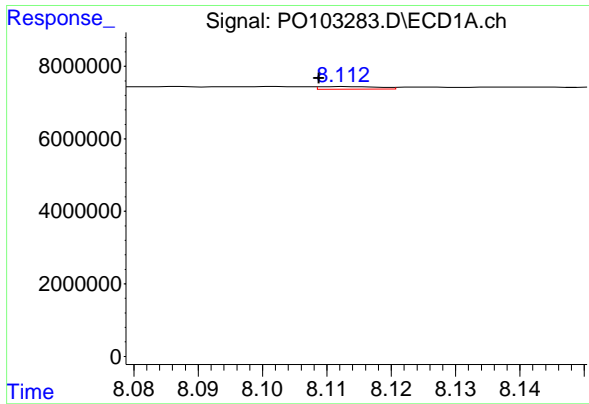
#36 AR-1262-1

R.T.: 7.526 min
 Delta R.T.: 0.020 min
 Response: 1118712
 Conc: 8.20 ng/ml



#36 AR-1262-1

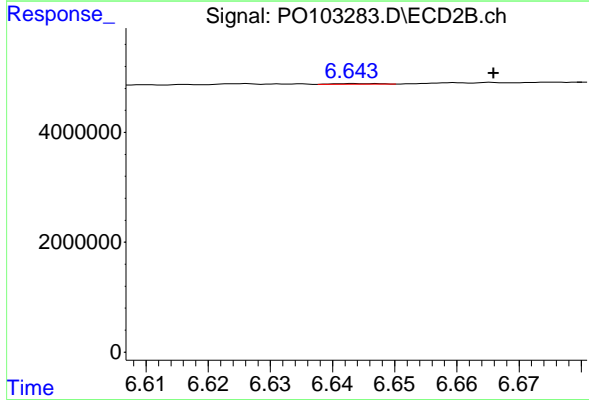
R.T.: 6.383 min
 Delta R.T.: 0.008 min
 Response: 193328
 Conc: 2.39 ng/ml



#37 AR-1262-2

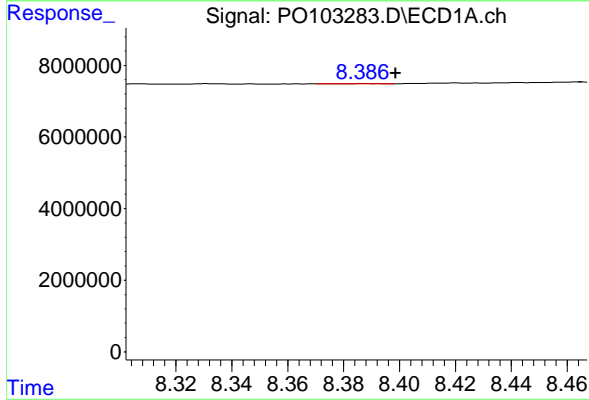
R.T.: 8.113 min
 Delta R.T.: 0.004 min
 Response: 453149
 Conc: 1.35 ng/ml

Instrument :
 ECD_O
 ClientSampleId :
 PB160575BL



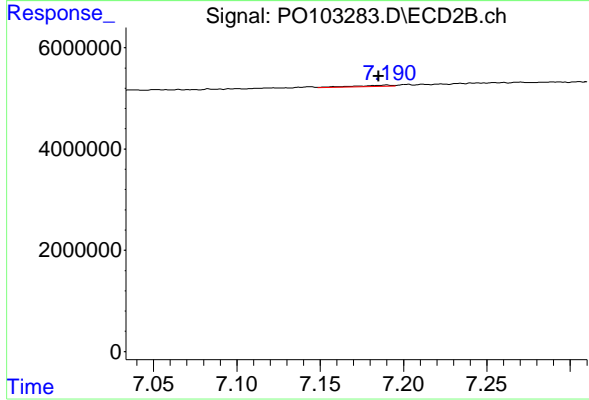
#37 AR-1262-2

R.T.: 6.644 min
 Delta R.T.: -0.022 min
 Response: 58696
 Conc: 0.41 ng/ml



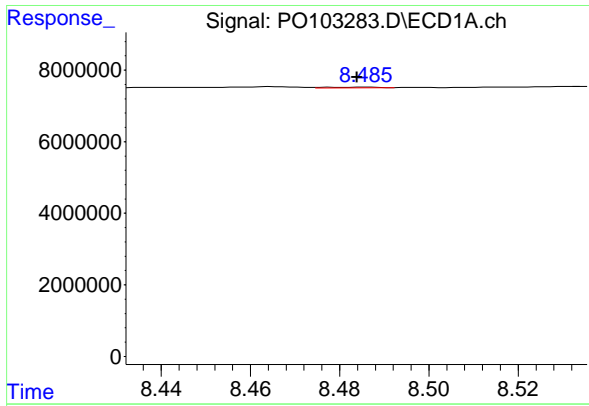
#38 AR-1262-3

R.T.: 8.388 min
 Delta R.T.: -0.011 min
 Response: 80726
 Conc: 0.37 ng/ml



#38 AR-1262-3

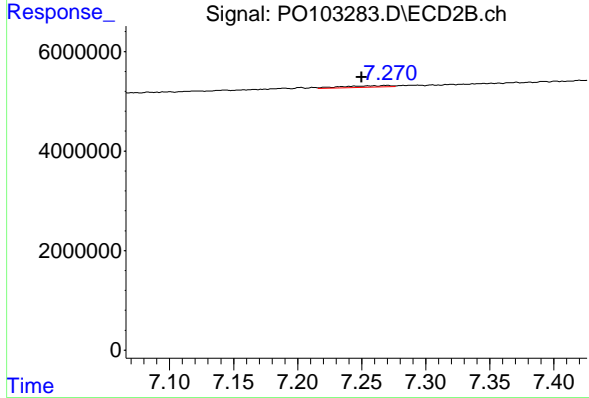
R.T.: 7.190 min
 Delta R.T.: 0.005 min
 Response: 376089
 Conc: 3.10 ng/ml



#39 AR-1262-4

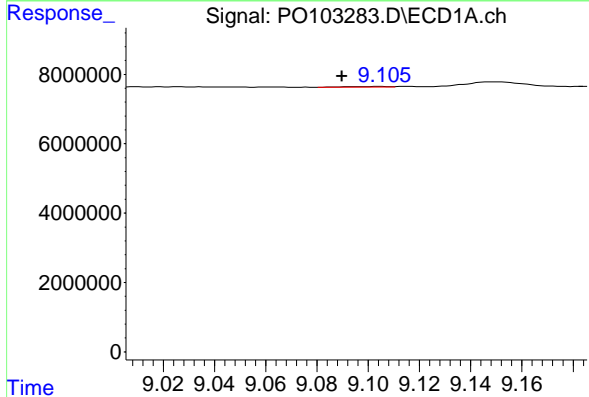
R.T.: 8.486 min
 Delta R.T.: 0.002 min
 Response: 181742
 Conc: 1.05 ng/ml

Instrument :
 ECD_O
 ClientSampleId :
 PB160575BL



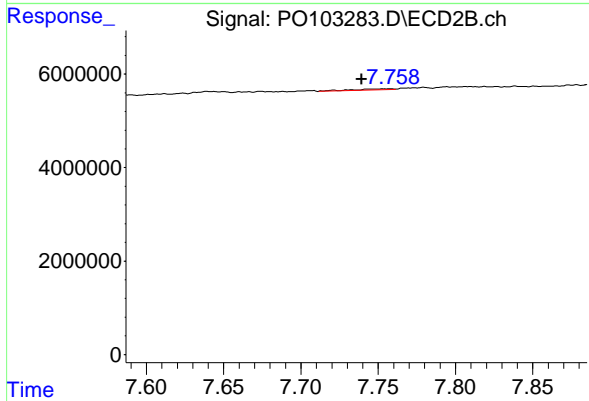
#39 AR-1262-4

R.T.: 7.269 min
 Delta R.T.: 0.020 min
 Response: 827029
 Conc: 4.02 ng/ml



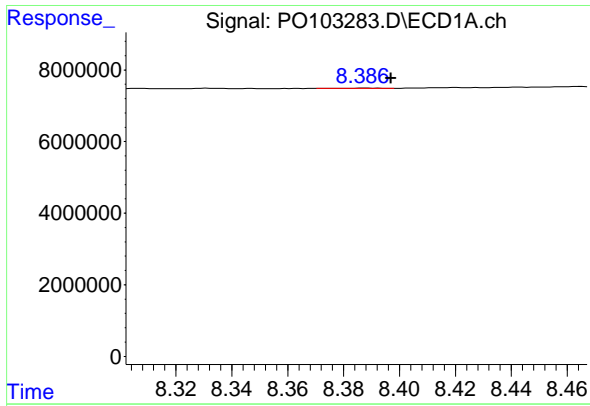
#40 AR-1262-5

R.T.: 9.105 min
 Delta R.T.: 0.016 min
 Response: 211264
 Conc: 1.80 ng/ml



#40 AR-1262-5

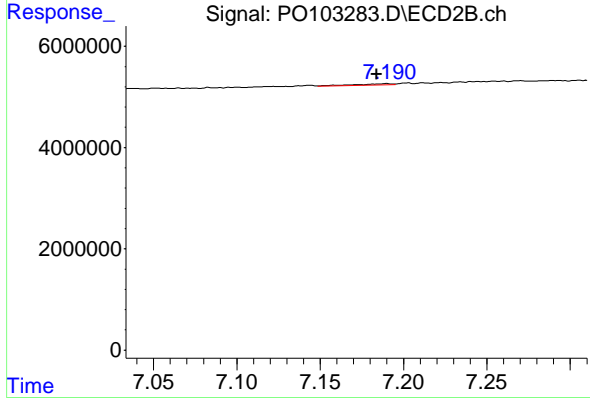
R.T.: 7.754 min
 Delta R.T.: 0.014 min
 Response: 366340
 Conc: 4.16 ng/ml



#41 AR-1268-1

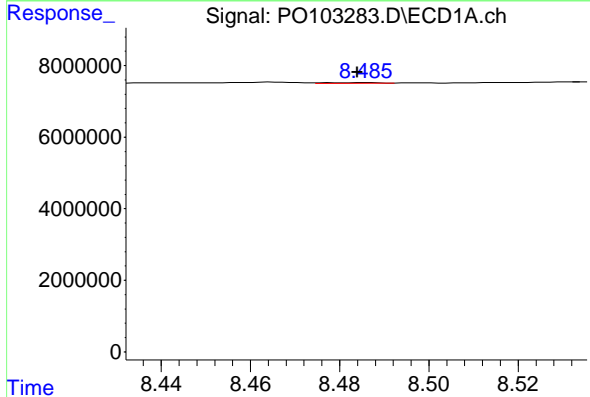
R.T.: 8.388 min
 Delta R.T.: -0.009 min
 Response: 80726
 Conc: 0.20 ng/ml

Instrument :
 ECD_O
 ClientSampleId :
 PB160575BL



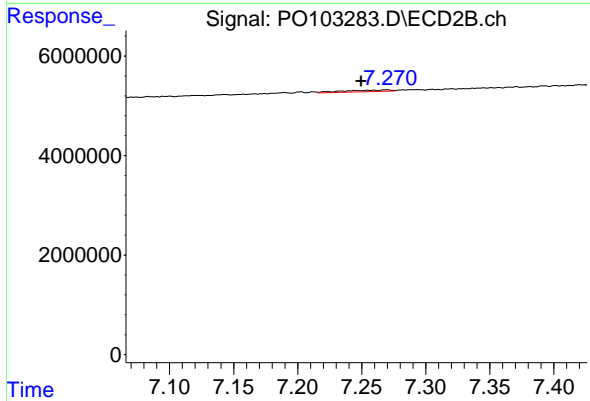
#41 AR-1268-1

R.T.: 7.190 min
 Delta R.T.: 0.006 min
 Response: 376089
 Conc: 1.06 ng/ml



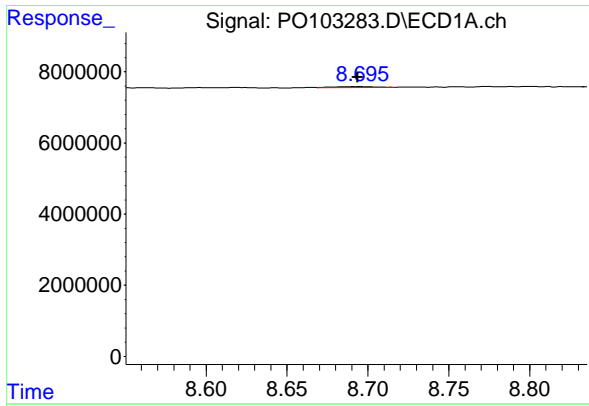
#42 AR-1268-2

R.T.: 8.486 min
 Delta R.T.: 0.002 min
 Response: 181742
 Conc: 0.49 ng/ml



#42 AR-1268-2

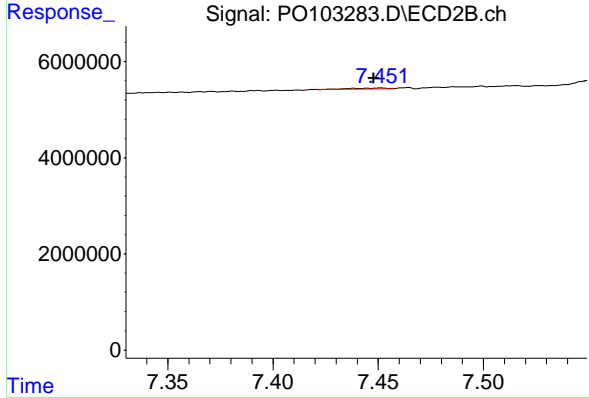
R.T.: 7.269 min
 Delta R.T.: 0.020 min
 Response: 827029
 Conc: 2.60 ng/ml



#43 AR-1268-3

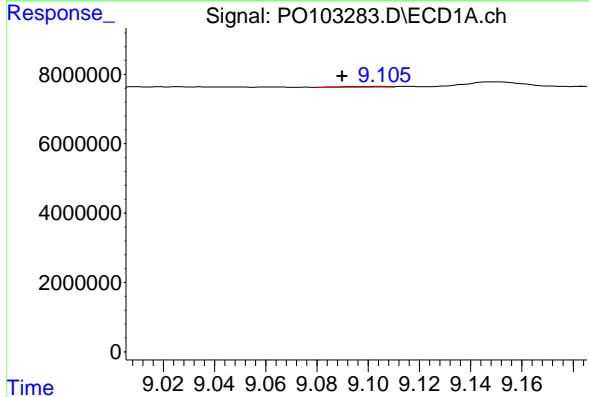
R.T.: 8.695 min
 Delta R.T.: 0.002 min
 Response: 572478
 Conc: 1.73 ng/ml

Instrument :
 ECD_O
 ClientSampleId :
 PB160575BL



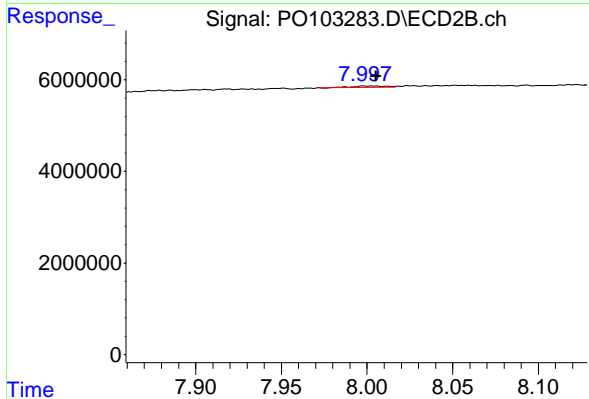
#43 AR-1268-3

R.T.: 7.451 min
 Delta R.T.: 0.003 min
 Response: 252018
 Conc: 0.93 ng/ml



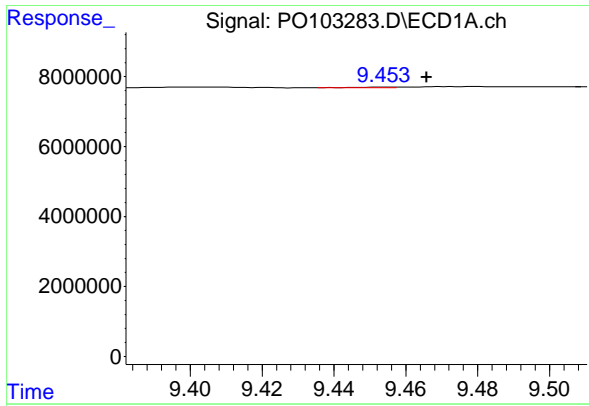
#44 AR-1268-4

R.T.: 9.105 min
 Delta R.T.: 0.015 min
 Response: 211264
 Conc: 1.62 ng/ml



#44 AR-1268-4

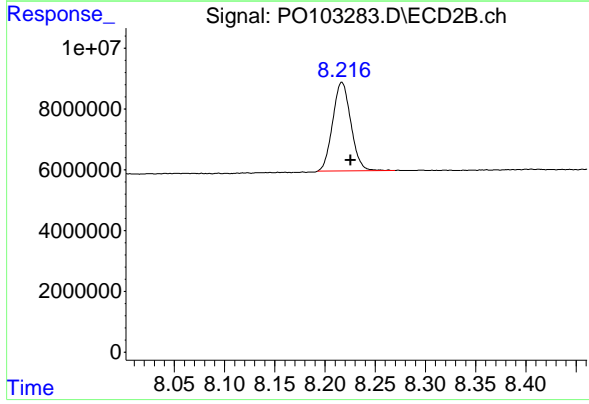
R.T.: 7.998 min
 Delta R.T.: -0.007 min
 Response: 402043
 Conc: 0.56 ng/ml



#45 AR-1268-5

R.T.: 9.453 min
 Delta R.T.: -0.012 min
 Response: 124891
 Conc: 0.12 ng/ml

Instrument :
 ECD_O
 ClientSampleId :
 PB160575BL



#45 AR-1268-5

R.T.: 8.217 min
 Delta R.T.: -0.009 min
 Response: 36602804
 Conc: 118.07 ng/ml