

Data Path : Z:\pestpcbsrv\HPCHEM1\ECD\_0\Data\P0042925\  
 Data File : PO110867.D  
 Signal(s) : Signal #1: ECD1A.ch Signal #2: ECD2B.ch  
 Acq On : 29 Apr 2025 18:05  
 Operator : YP/AJ  
 Sample : Q1904-01MS  
 Misc :  
 ALS Vial : 18 Sample Multiplier: 1

Instrument :  
 ECD\_0  
 ClientSampleId :  
 VNJ-210MS

Integration File signal 1: autoint1.e  
 Integration File signal 2: autoint2.e  
 Quant Time: Apr 30 02:27:51 2025  
 Quant Method : Z:\pestpcbsrv\HPCHEM1\ECD\_0\methods\P0041025.M  
 Quant Title : GC EXTRACTABLES  
 QLast Update : Fri Apr 11 02:12:41 2025  
 Response via : Initial Calibration  
 Integrator: ChemStation

Volume Inj. : 2 µl  
 Signal #1 Phase : ZB-MR1 Signal #2 Phase: ZB-MR2  
 Signal #1 Info : 30Mx0.32mmx 0.50µ Signal #2 Info : 30M x 0.32mm x 0.25µm

Compound	RT#1	RT#2	Resp#1	Resp#2	ng/ml	ng/ml
-----						
System Monitoring Compounds						
1) SA Tetrachlo...	3.684	3.683	204.2E6	106.3E6	23.341	21.299
2) SA Decachlor...	8.727	8.679	151.0E6	36669320	19.125	19.049
Target Compounds						
3) L1 AR-1016-1	4.774	4.762	183.5E6	96163946	559.100	547.913
4) L1 AR-1016-2	4.793	4.781	255.0E6	133.4E6	560.529	530.644
5) L1 AR-1016-3	4.850	4.956	176.2E6	68308260	546.419	503.337
6) L1 AR-1016-4	4.970	4.998	138.0E6	55741649	554.014	487.389
7) L1 AR-1016-5	5.227	5.210	136.6E6	68733019	507.848	461.067
8) L2 AR-1221-1	3.895	3.891	19762445	9949015	167.429	148.999
9) L2 AR-1221-2	3.983	3.978	30413573	14955949	344.265	298.544
10) L2 AR-1221-3	4.058	4.053	95689020	50379716	363.664	337.733
11) L3 AR-1232-1	4.058	4.053	95689020	50379716	467.178	437.993
12) L3 AR-1232-2	4.552	4.781	133.4E6	133.4E6	1250.039	1203.576
13) L3 AR-1232-3	4.793	4.956	255.0E6	68308260	1276.455	1194.135
14) L3 AR-1232-4	4.970	5.040	138.0E6	67308230	1349.391	1247.526
15) L3 AR-1232-5	5.012	5.210	112.1E6	68733019	1626.240	1202.974 #
16) L4 AR-1242-1	4.774	4.762	183.5E6	96163946	661.055	643.226
17) L4 AR-1242-2	4.793	4.781	255.0E6	133.4E6	661.040	625.404
18) L4 AR-1242-3	4.850	4.956	176.2E6	68308260	633.480	590.992
19) L4 AR-1242-4	4.970	5.040	138.0E6	67308230	653.084	560.438
20) L4 AR-1242-5	5.622	5.562	29691224	62730740	131.149	432.337 #
21) L5 AR-1248-1	4.774	4.762	183.5E6	96163946	862.000	835.250
22) L5 AR-1248-2	5.012	4.998	112.1E6	55741649	378.649	342.220
23) L5 AR-1248-3	5.227	5.040	136.6E6	67308230	369.273	382.746
24) L5 AR-1248-4	5.581	5.210	123.9E6	68733019	238.258	337.458 #
25) L5 AR-1248-5	5.622	5.602	29691224	14518178	80.371	73.549
26) L6 AR-1254-1	5.581	5.562	123.9E6	62730740	222.050	208.063
27) L6 AR-1254-2	5.730	5.709	124.6E6	62532467	256.466	236.252
28) L6 AR-1254-3	6.151	6.127	206.6E6	102.8E6	263.776	254.790
29) L6 AR-1254-4	6.364	6.338	27007349	11521402	55.388	50.156
30) L6 AR-1254-5	6.784	6.755	379.5E6	170.0E6	541.381	511.648
31) L7 AR-1260-1	6.267	6.242	278.3E6	134.2E6	588.981	545.668
32) L7 AR-1260-2	6.456	6.429	310.5E6	139.5E6	529.510	478.151
33) L7 AR-1260-3	6.823	6.582	222.9E6	133.7E6	452.229	493.665
34) L7 AR-1260-4	7.083	7.053	210.0E6	90238636	494.672	449.754
35) L7 AR-1260-5	7.326	7.295	492.3E6	201.4E6	471.761	438.978
36) L8 AR-1262-1	6.823	6.794	222.9E6	100.7E6	317.754	305.785
37) L8 AR-1262-2	7.326	7.295	492.3E6	201.4E6	407.596	396.157
38) L8 AR-1262-3	7.610	7.577	101.3E6	37442563	198.915	193.371
39) L8 AR-1262-4	7.672	7.640	335.7E6	125.1E6	374.539	360.334
40) L8 AR-1262-5	8.171	8.133	100.4E6	29798172	249.047	239.160
41) L9 AR-1268-1	7.610	7.577	101.3E6	37442563	72.120	68.358

Data Path : Z:\pestpcbsrv\HPCHEM1\ECD\_0\Data\P0042925\  
 Data File : P0110867.D  
 Signal(s) : Signal #1: ECD1A.ch Signal #2: ECD2B.ch  
 Acq On : 29 Apr 2025 18:05  
 Operator : YP/AJ  
 Sample : Q1904-01MS  
 Misc :  
 ALS Vial : 18 Sample Multiplier: 1

Instrument :  
 ECD\_0  
 ClientSampleId :  
 VNJ-210MS

Integration File signal 1: autoint1.e  
 Integration File signal 2: autoint2.e  
 Quant Time: Apr 30 02:27:51 2025  
 Quant Method : Z:\pestpcbsrv\HPCHEM1\ECD\_0\methods\P0041025.M  
 Quant Title : GC EXTRACTABLES  
 QLast Update : Fri Apr 11 02:12:41 2025  
 Response via : Initial Calibration  
 Integrator: ChemStation

Volume Inj. : 2 µl  
 Signal #1 Phase : ZB-MR1 Signal #2 Phase: ZB-MR2  
 Signal #1 Info : 30Mx0.32mmx 0.50µ Signal #2 Info : 30M x 0.32mm x 0.25µm

	Compound	RT#1	RT#2	Resp#1	Resp#2	ng/ml	ng/ml
42)	L9 AR-1268-2	7.672	7.640	335.7E6	125.1E6	262.310	251.372
43)	L9 AR-1268-3	7.882	7.847	8111439	3598195	7.777	9.684
44)	L9 AR-1268-4	8.171	8.133	100.4E6	29798172	225.967	211.127
45)	L9 AR-1268-5	8.467	8.425	36810178	9596588	11.432	12.191

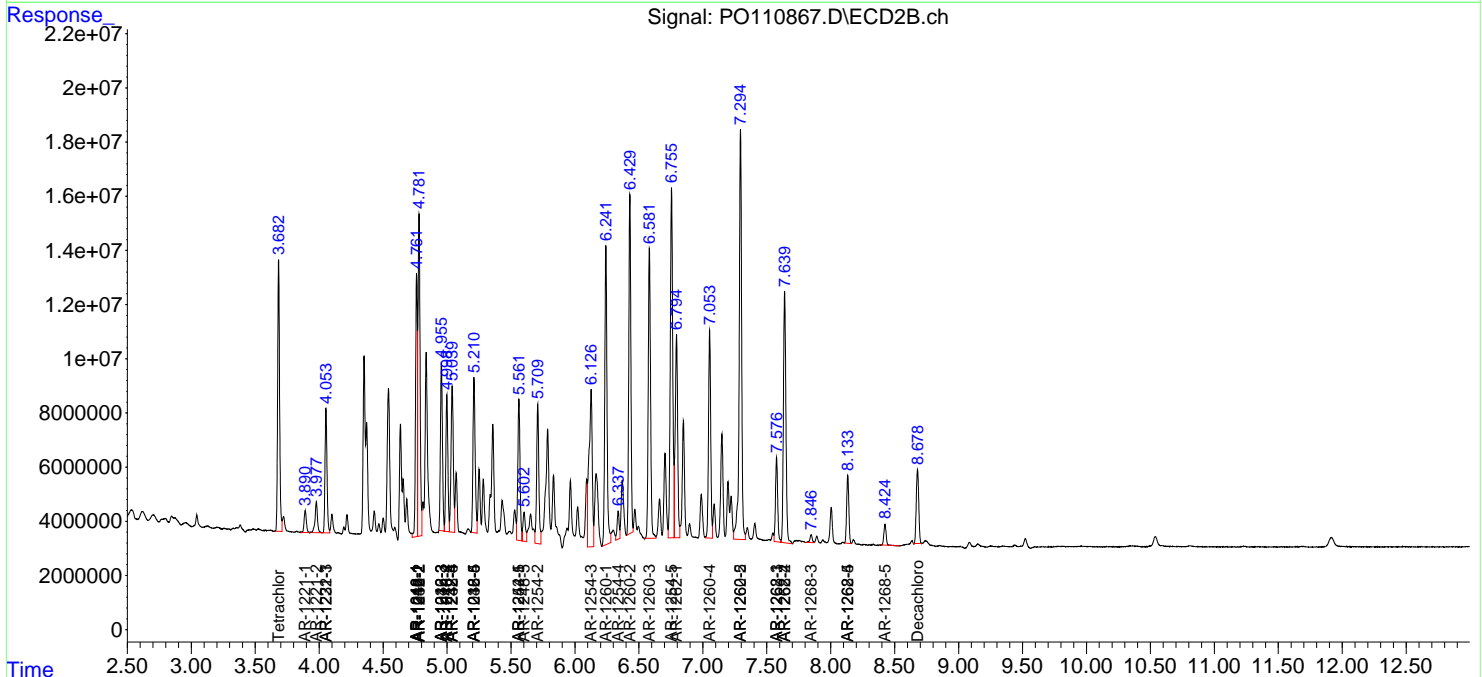
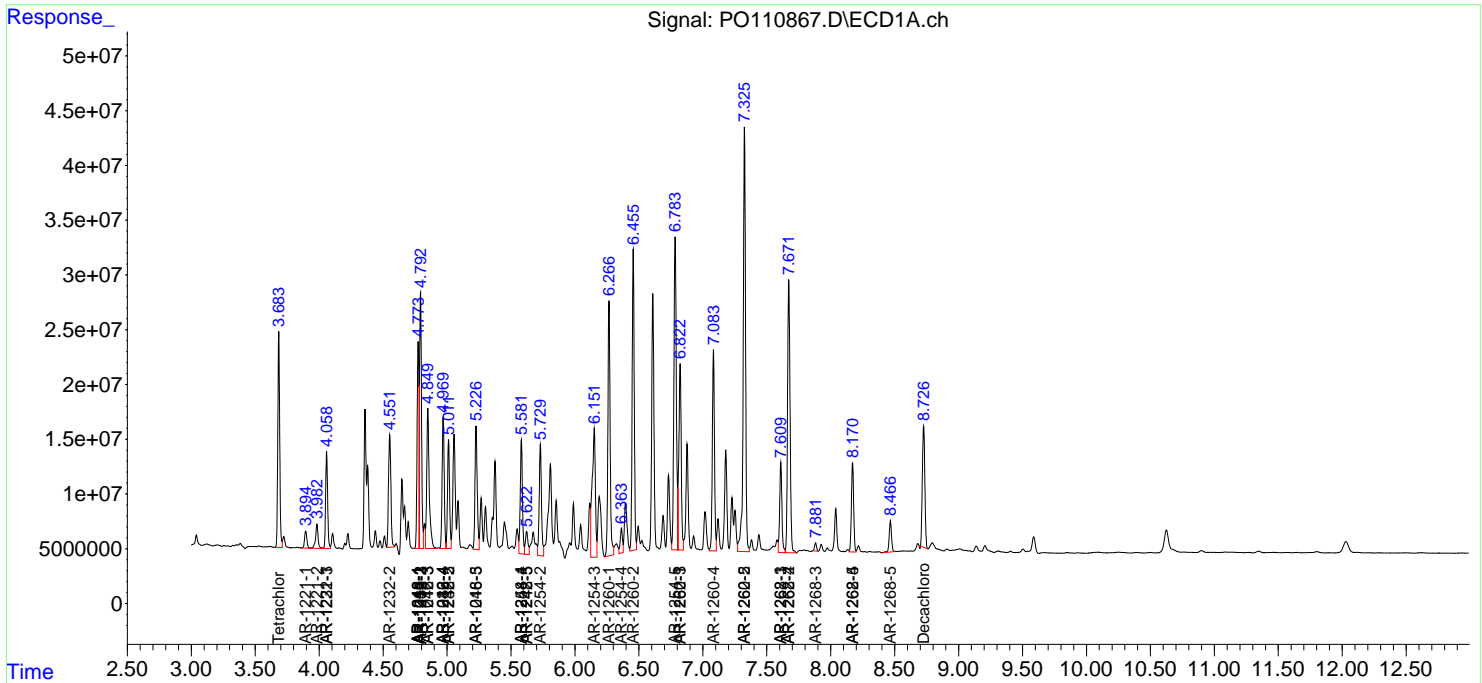
(f)=RT Delta > 1/2 Window (#)=Amounts differ by > 25% (m)=manual int.

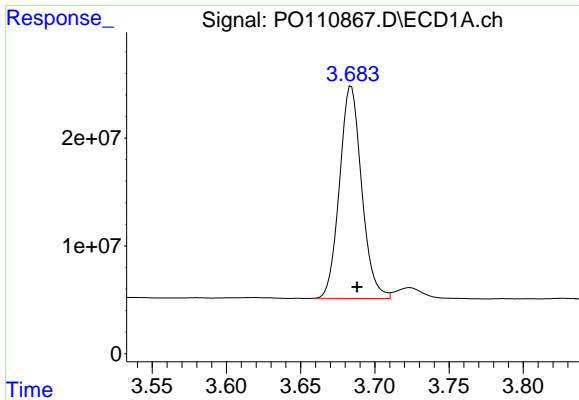
Data Path : Z:\pestpcbsrv\HPCHEM1\ECD\_O\Data\PO042925\  
 Data File : PO110867.D  
 Signal(s) : Signal #1: ECD1A.ch Signal #2: ECD2B.ch  
 Acq On : 29 Apr 2025 18:05  
 Operator : YP/AJ  
 Sample : Q1904-01MS  
 Misc :  
 ALS Vial : 18 Sample Multiplier: 1

Instrument :  
 ECD\_O  
 ClientSampleId :  
 VNJ-210MS

Integration File signal 1: autoint1.e  
 Integration File signal 2: autoint2.e  
 Quant Time: Apr 30 02:27:51 2025  
 Quant Method : Z:\pestpcbsrv\HPCHEM1\ECD\_O\methods\PO041025.M  
 Quant Title : GC EXTRACTABLES  
 QLast Update : Fri Apr 11 02:12:41 2025  
 Response via : Initial Calibration  
 Integrator: ChemStation

Volume Inj. : 2 µl  
 Signal #1 Phase : ZB-MR1 Signal #2 Phase: ZB-MR2  
 Signal #1 Info : 30Mx0.32mmx 0.50µ Signal #2 Info : 30M x 0.32mm x 0.25µm

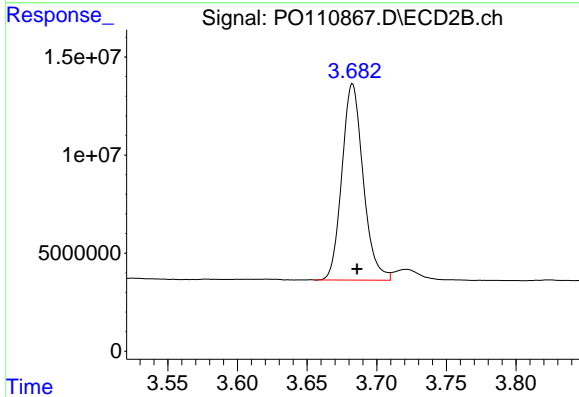




#1 Tetrachloro-m-xylene

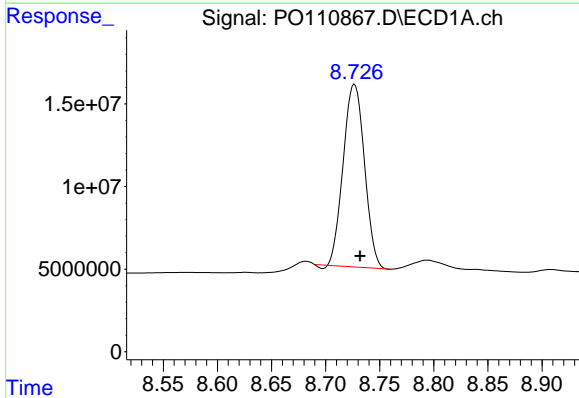
R.T.: 3.684 min  
 Delta R.T.: -0.004 min  
 Response: 204209399  
 Conc: 23.34 ng/ml

Instrument :  
 ECD\_O  
 ClientSampleId :  
 VNJ-210MS



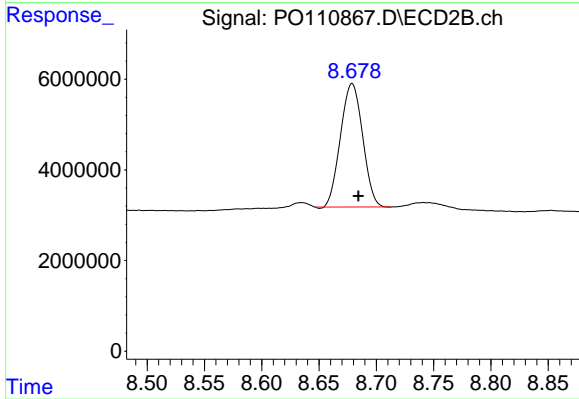
#1 Tetrachloro-m-xylene

R.T.: 3.683 min  
 Delta R.T.: -0.003 min  
 Response: 106275735  
 Conc: 21.30 ng/ml



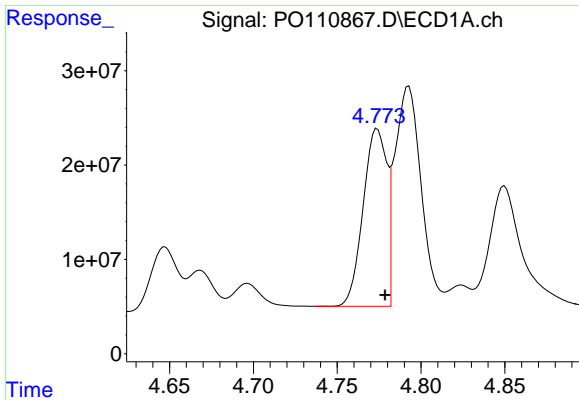
#2 Decachlorobiphenyl

R.T.: 8.727 min  
 Delta R.T.: -0.005 min  
 Response: 150994842  
 Conc: 19.13 ng/ml



#2 Decachlorobiphenyl

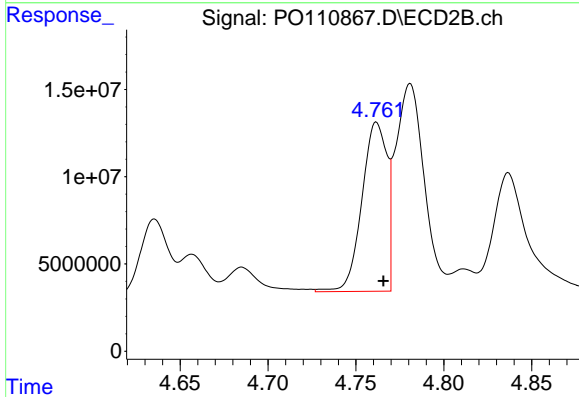
R.T.: 8.679 min  
 Delta R.T.: -0.005 min  
 Response: 36669320  
 Conc: 19.05 ng/ml



#3 AR-1016-1

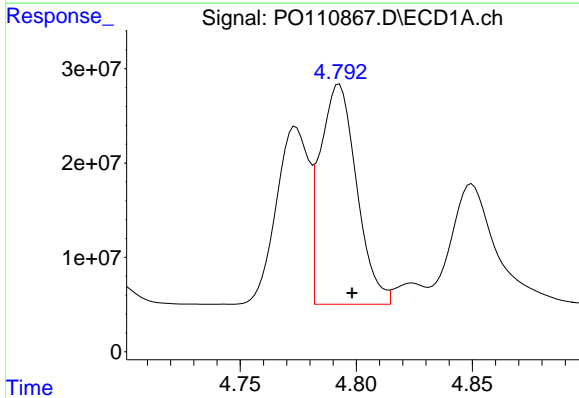
R.T.: 4.774 min  
 Delta R.T.: -0.005 min  
 Response: 183464928  
 Conc: 559.10 ng/ml

Instrument :  
 ECD\_O  
 ClientSampleId :  
 VNJ-210MS



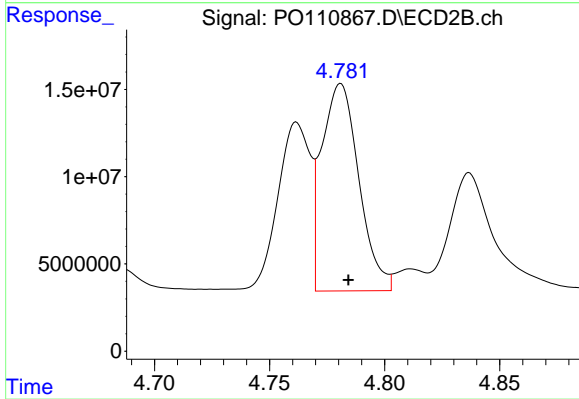
#3 AR-1016-1

R.T.: 4.762 min  
 Delta R.T.: -0.004 min  
 Response: 96163946  
 Conc: 547.91 ng/ml



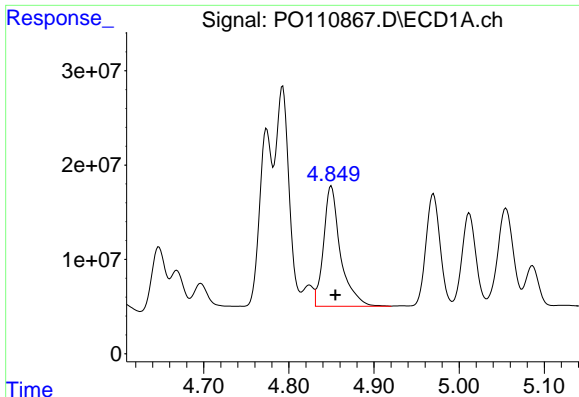
#4 AR-1016-2

R.T.: 4.793 min  
 Delta R.T.: -0.005 min  
 Response: 255011899  
 Conc: 560.53 ng/ml



#4 AR-1016-2

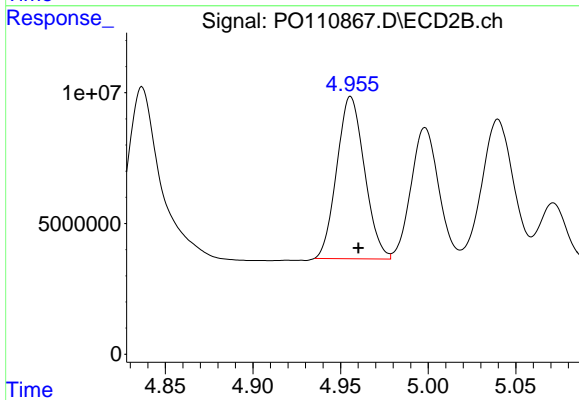
R.T.: 4.781 min  
 Delta R.T.: -0.003 min  
 Response: 133438276  
 Conc: 530.64 ng/ml



#5 AR-1016-3

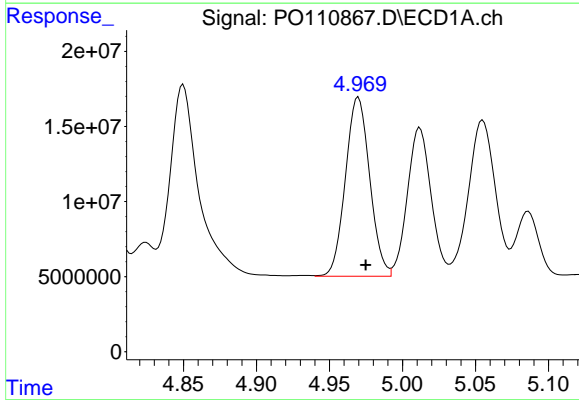
R.T.: 4.850 min  
 Delta R.T.: -0.005 min  
 Response: 176235310  
 Conc: 546.42 ng/ml

Instrument :  
 ECD\_O  
 ClientSampleId :  
 VNJ-210MS



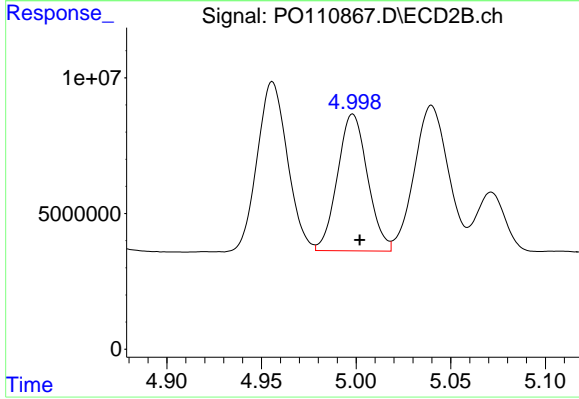
#5 AR-1016-3

R.T.: 4.956 min  
 Delta R.T.: -0.004 min  
 Response: 68308260  
 Conc: 503.34 ng/ml



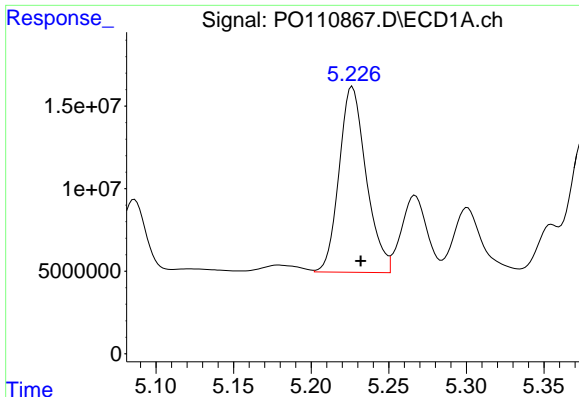
#6 AR-1016-4

R.T.: 4.970 min  
 Delta R.T.: -0.005 min  
 Response: 138040581  
 Conc: 554.01 ng/ml



#6 AR-1016-4

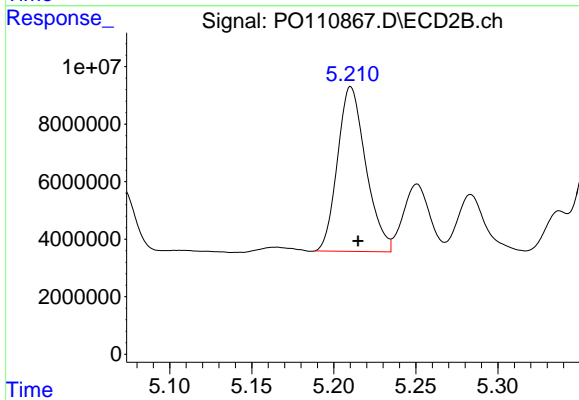
R.T.: 4.998 min  
 Delta R.T.: -0.004 min  
 Response: 55741649  
 Conc: 487.39 ng/ml



#7 AR-1016-5

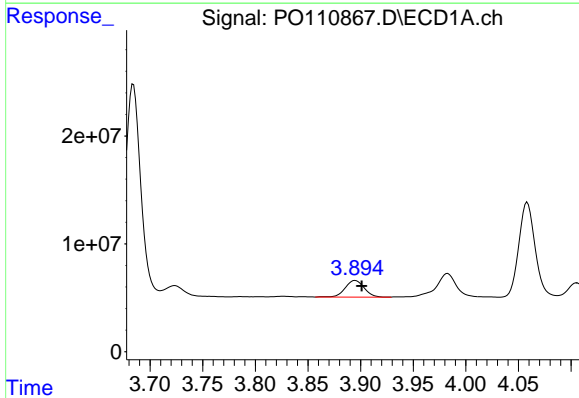
R.T.: 5.227 min  
 Delta R.T.: -0.005 min  
 Response: 136616934  
 Conc: 507.85 ng/ml

Instrument :  
 ECD\_O  
 ClientSampleId :  
 VNJ-210MS



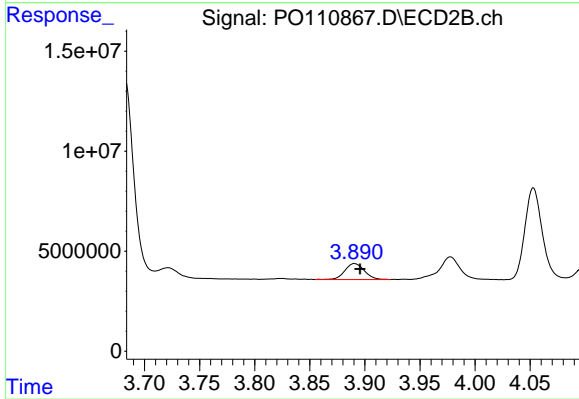
#7 AR-1016-5

R.T.: 5.210 min  
 Delta R.T.: -0.004 min  
 Response: 68733019  
 Conc: 461.07 ng/ml



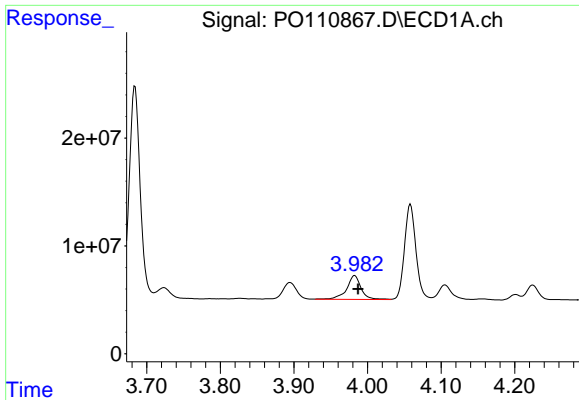
#8 AR-1221-1

R.T.: 3.895 min  
 Delta R.T.: -0.006 min  
 Response: 19762445  
 Conc: 167.43 ng/ml



#8 AR-1221-1

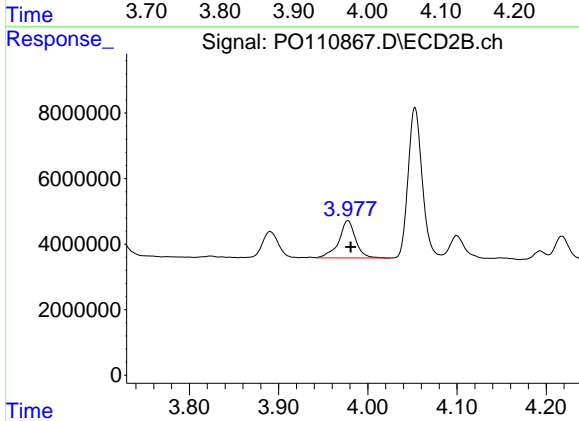
R.T.: 3.891 min  
 Delta R.T.: -0.005 min  
 Response: 9949015  
 Conc: 149.00 ng/ml



#9 AR-1221-2

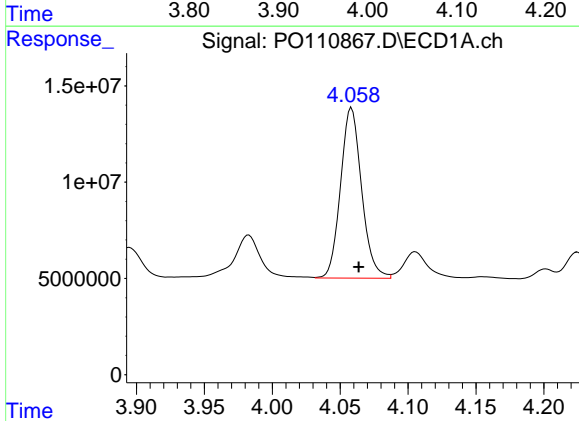
R.T.: 3.983 min  
 Delta R.T.: -0.005 min  
 Response: 30413573  
 Conc: 344.26 ng/ml

Instrument :  
 ECD\_O  
 ClientSampleId :  
 VNJ-210MS



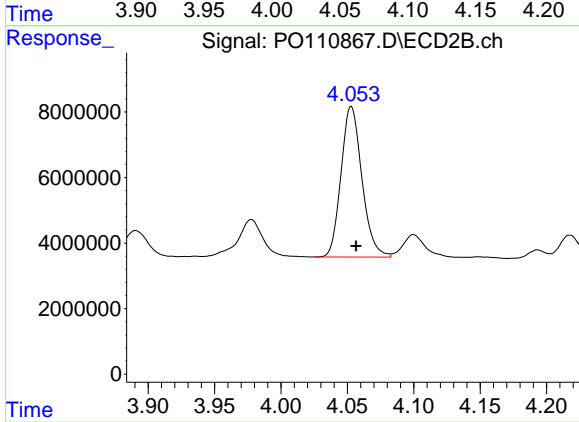
#9 AR-1221-2

R.T.: 3.978 min  
 Delta R.T.: -0.003 min  
 Response: 14955949  
 Conc: 298.54 ng/ml



#10 AR-1221-3

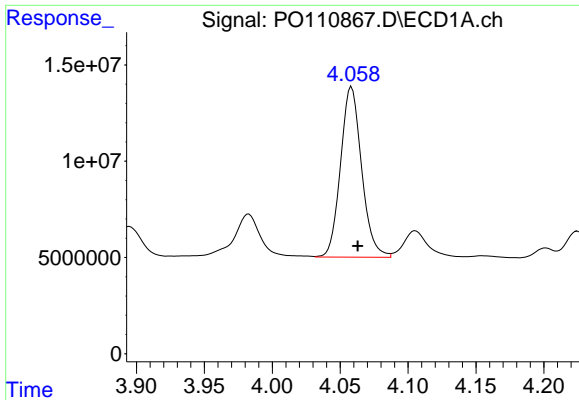
R.T.: 4.058 min  
 Delta R.T.: -0.005 min  
 Response: 95689020  
 Conc: 363.66 ng/ml



#10 AR-1221-3

R.T.: 4.053 min  
 Delta R.T.: -0.004 min  
 Response: 50379716  
 Conc: 337.73 ng/ml

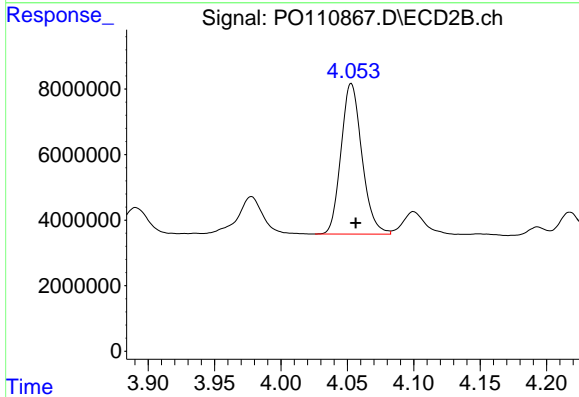




#11 AR-1232-1

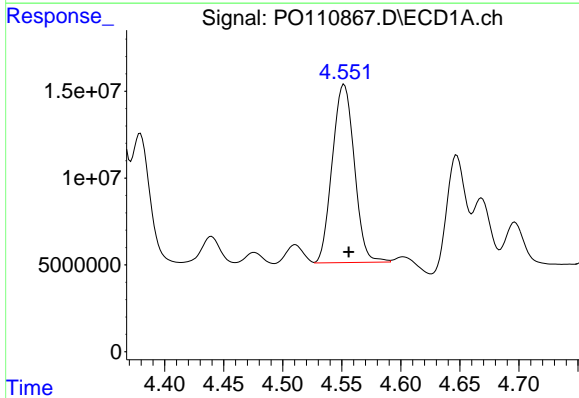
R.T.: 4.058 min  
 Delta R.T.: -0.005 min  
 Response: 95689020  
 Conc: 467.18 ng/ml

Instrument :  
 ECD\_O  
 ClientSampleId :  
 VNJ-210MS



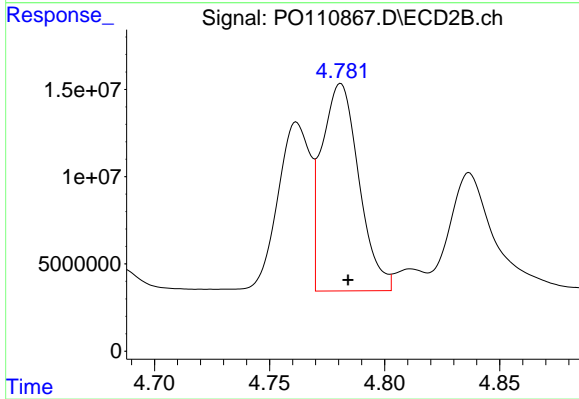
#11 AR-1232-1

R.T.: 4.053 min  
 Delta R.T.: -0.003 min  
 Response: 50379716  
 Conc: 437.99 ng/ml



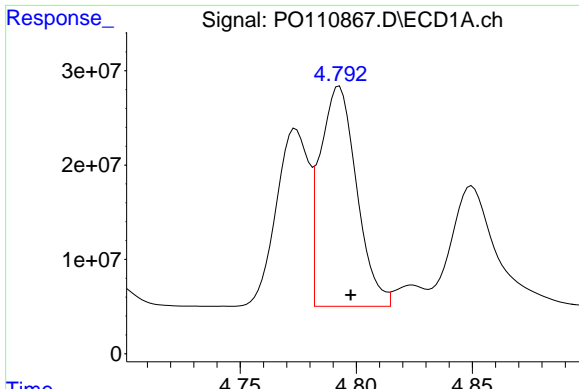
#12 AR-1232-2

R.T.: 4.552 min  
 Delta R.T.: -0.004 min  
 Response: 133389827  
 Conc: 1250.04 ng/ml



#12 AR-1232-2

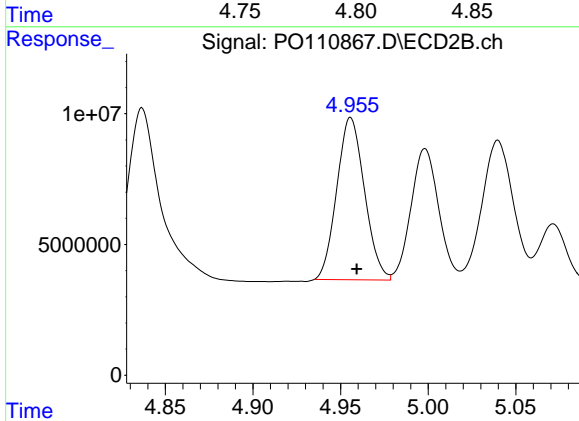
R.T.: 4.781 min  
 Delta R.T.: -0.003 min  
 Response: 133438276  
 Conc: 1203.58 ng/ml



#13 AR-1232-3

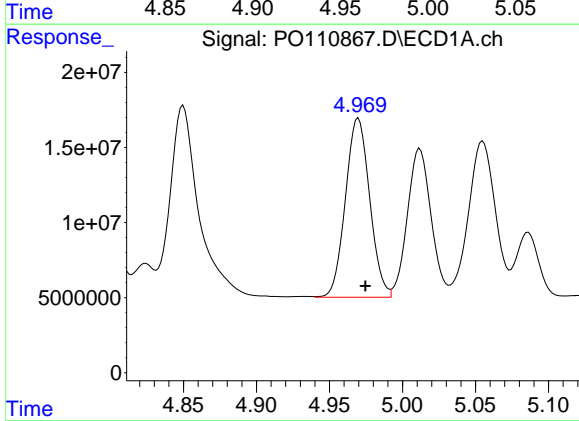
R.T.: 4.793 min  
 Delta R.T.: -0.005 min  
 Response: 255011899  
 Conc: 1276.45 ng/ml

Instrument :  
 ECD\_O  
 ClientSampleId :  
 VNJ-210MS



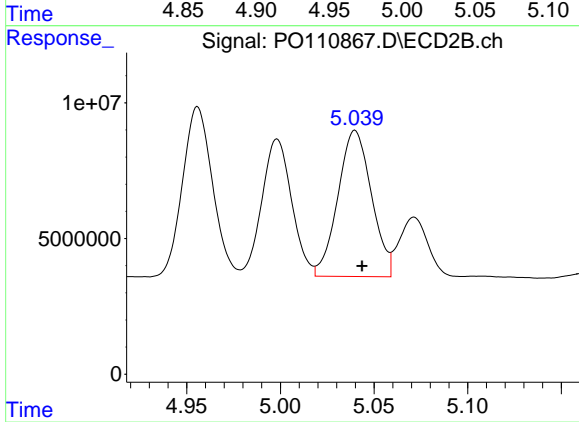
#13 AR-1232-3

R.T.: 4.956 min  
 Delta R.T.: -0.003 min  
 Response: 68308260  
 Conc: 1194.14 ng/ml



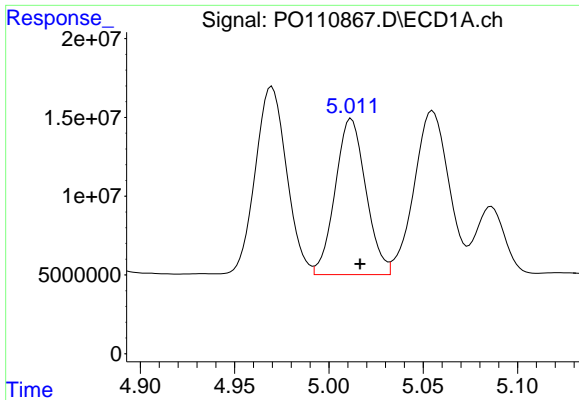
#14 AR-1232-4

R.T.: 4.970 min  
 Delta R.T.: -0.005 min  
 Response: 138040581  
 Conc: 1349.39 ng/ml



#14 AR-1232-4

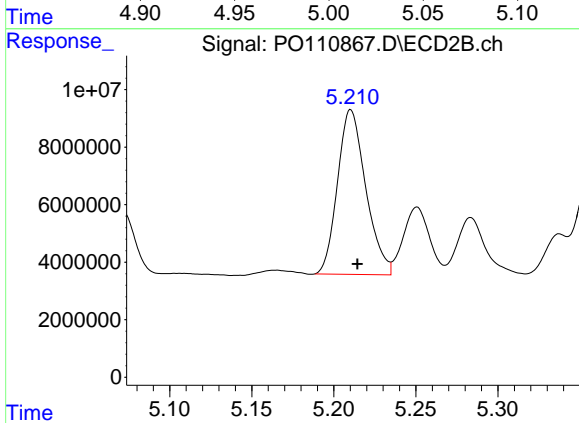
R.T.: 5.040 min  
 Delta R.T.: -0.004 min  
 Response: 67308230  
 Conc: 1247.53 ng/ml



#15 AR-1232-5

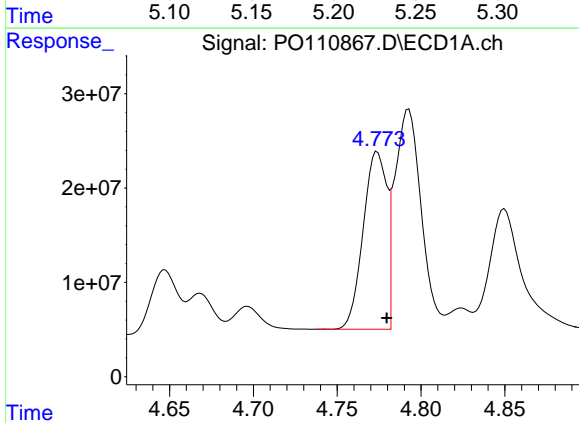
R.T.: 5.012 min  
 Delta R.T.: -0.005 min  
 Response: 112051760  
 Conc: 1626.24 ng/ml

Instrument :  
 ECD\_O  
 ClientSampleId :  
 VNJ-210MS



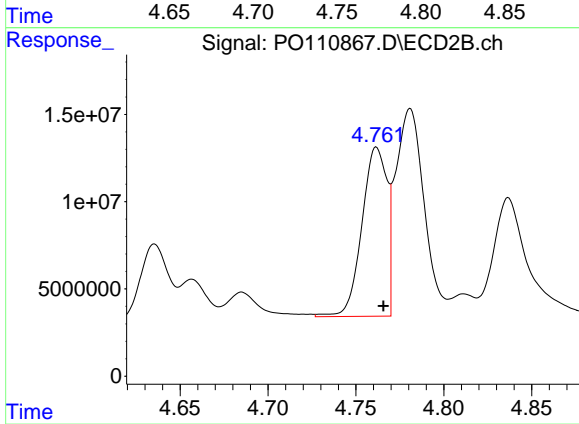
#15 AR-1232-5

R.T.: 5.210 min  
 Delta R.T.: -0.004 min  
 Response: 68733019  
 Conc: 1202.97 ng/ml



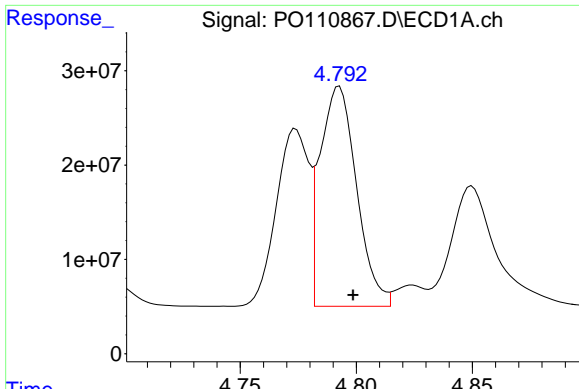
#16 AR-1242-1

R.T.: 4.774 min  
 Delta R.T.: -0.006 min  
 Response: 183464928  
 Conc: 661.06 ng/ml



#16 AR-1242-1

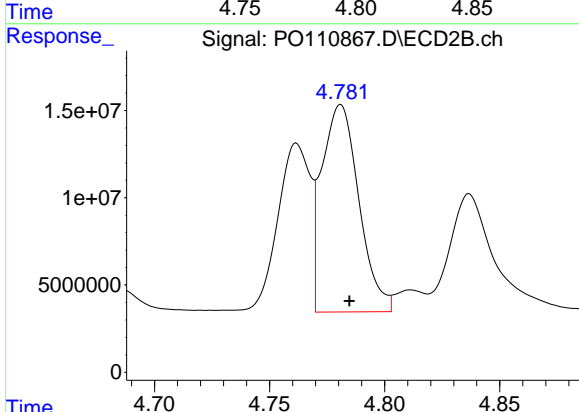
R.T.: 4.762 min  
 Delta R.T.: -0.004 min  
 Response: 96163946  
 Conc: 643.23 ng/ml



#17 AR-1242-2

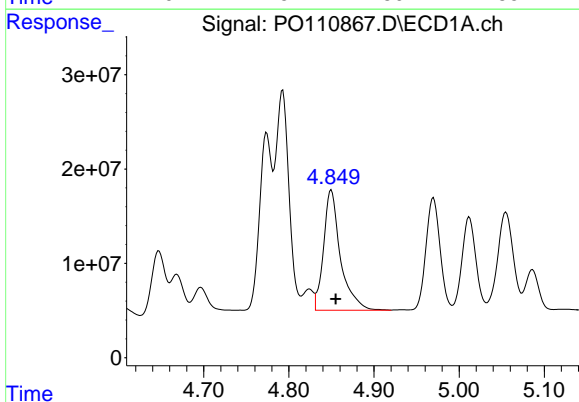
R.T.: 4.793 min  
 Delta R.T.: -0.006 min  
 Response: 255011899  
 Conc: 661.04 ng/ml

Instrument :  
 ECD\_O  
 ClientSampleId :  
 VNJ-210MS



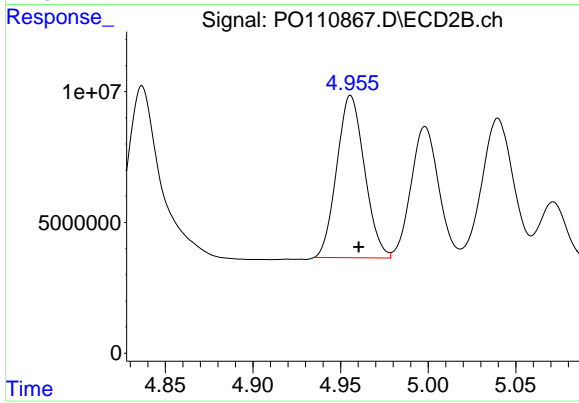
#17 AR-1242-2

R.T.: 4.781 min  
 Delta R.T.: -0.004 min  
 Response: 133438276  
 Conc: 625.40 ng/ml



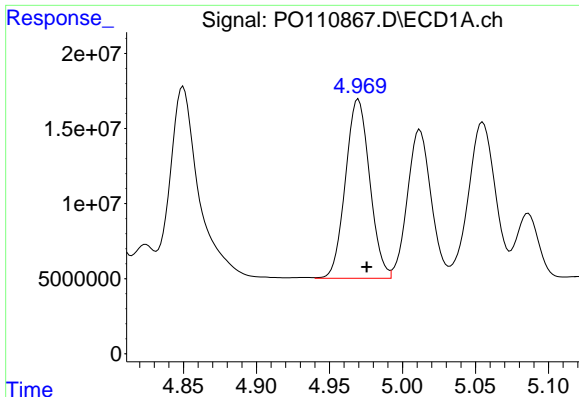
#18 AR-1242-3

R.T.: 4.850 min  
 Delta R.T.: -0.005 min  
 Response: 176235310  
 Conc: 633.48 ng/ml



#18 AR-1242-3

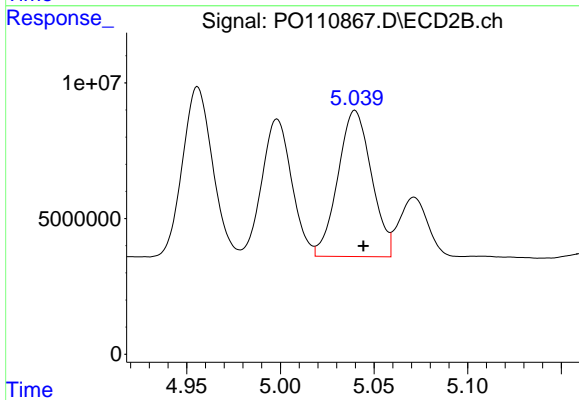
R.T.: 4.956 min  
 Delta R.T.: -0.005 min  
 Response: 68308260  
 Conc: 590.99 ng/ml



#19 AR-1242-4

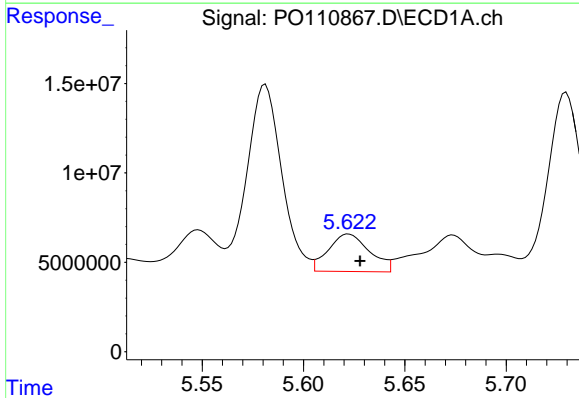
R.T.: 4.970 min  
 Delta R.T.: -0.006 min  
 Response: 138040581  
 Conc: 653.08 ng/ml

Instrument :  
 ECD\_O  
 ClientSampleId :  
 VNJ-210MS



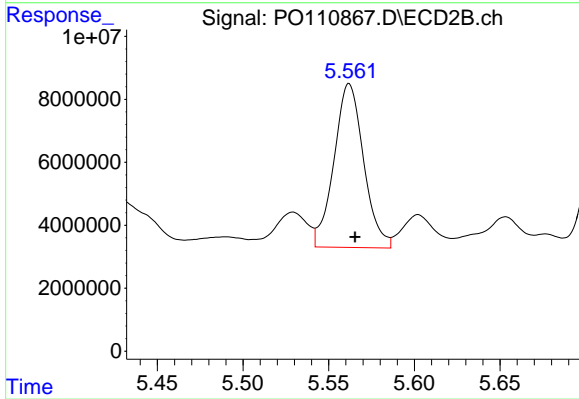
#19 AR-1242-4

R.T.: 5.040 min  
 Delta R.T.: -0.004 min  
 Response: 67308230  
 Conc: 560.44 ng/ml



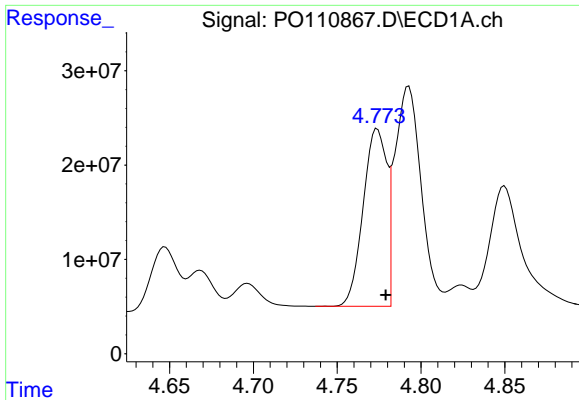
#20 AR-1242-5

R.T.: 5.622 min  
 Delta R.T.: -0.006 min  
 Response: 29691224  
 Conc: 131.15 ng/ml



#20 AR-1242-5

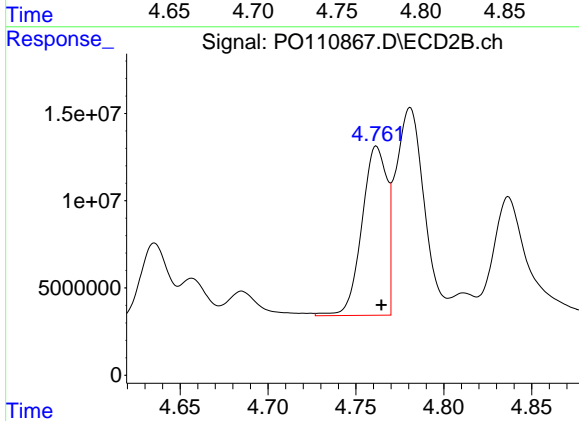
R.T.: 5.562 min  
 Delta R.T.: -0.003 min  
 Response: 62730740  
 Conc: 432.34 ng/ml



#21 AR-1248-1

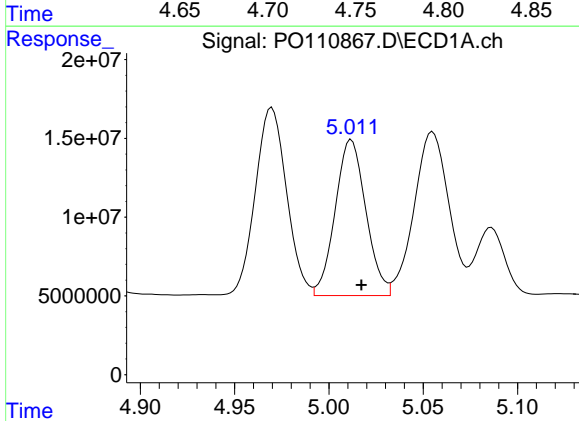
R.T.: 4.774 min  
 Delta R.T.: -0.005 min  
 Response: 183464928  
 Conc: 862.00 ng/ml

Instrument :  
 ECD\_O  
 ClientSampleId :  
 VNJ-210MS



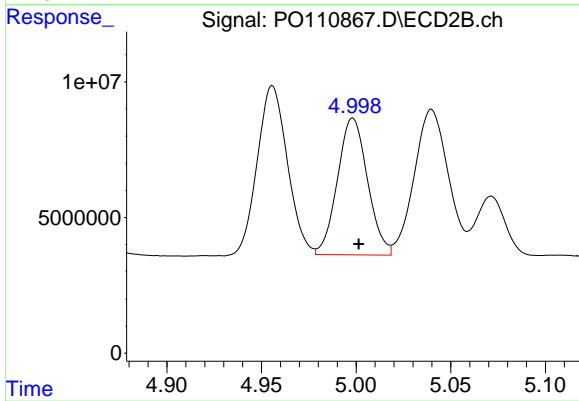
#21 AR-1248-1

R.T.: 4.762 min  
 Delta R.T.: -0.003 min  
 Response: 96163946  
 Conc: 835.25 ng/ml



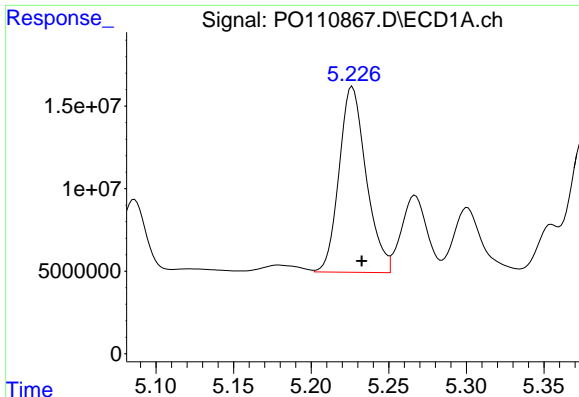
#22 AR-1248-2

R.T.: 5.012 min  
 Delta R.T.: -0.005 min  
 Response: 112051760  
 Conc: 378.65 ng/ml



#22 AR-1248-2

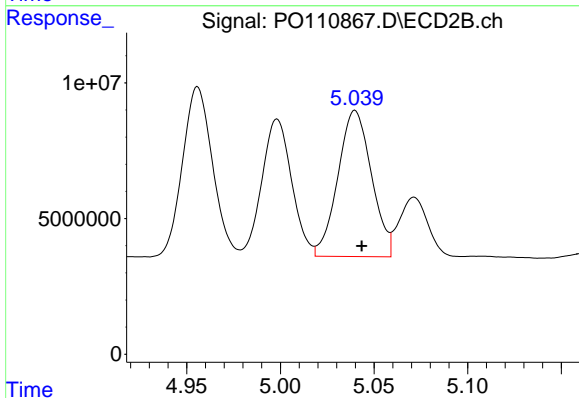
R.T.: 4.998 min  
 Delta R.T.: -0.003 min  
 Response: 55741649  
 Conc: 342.22 ng/ml



#23 AR-1248-3

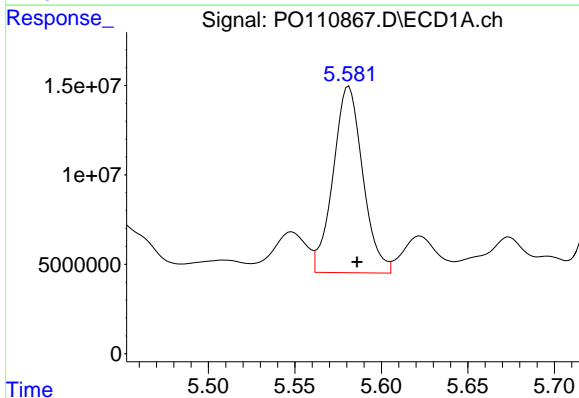
R.T.: 5.227 min  
 Delta R.T.: -0.006 min  
 Response: 136616934  
 Conc: 369.27 ng/ml

Instrument :  
 ECD\_O  
 ClientSampleId :  
 VNJ-210MS



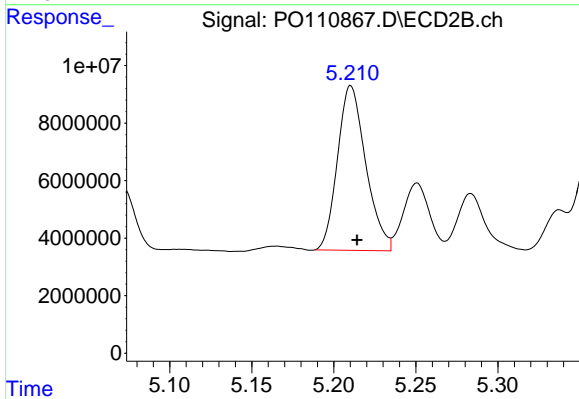
#23 AR-1248-3

R.T.: 5.040 min  
 Delta R.T.: -0.004 min  
 Response: 67308230  
 Conc: 382.75 ng/ml



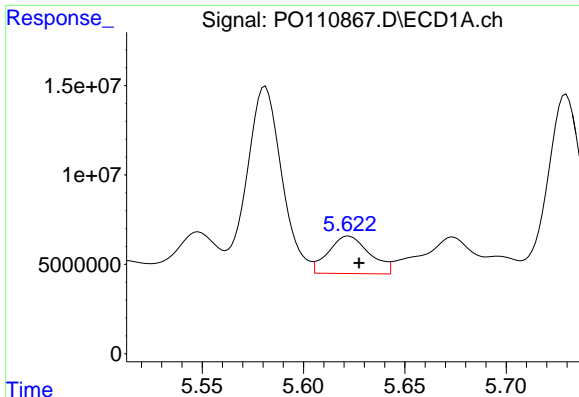
#24 AR-1248-4

R.T.: 5.581 min  
 Delta R.T.: -0.005 min  
 Response: 123901306  
 Conc: 238.26 ng/ml



#24 AR-1248-4

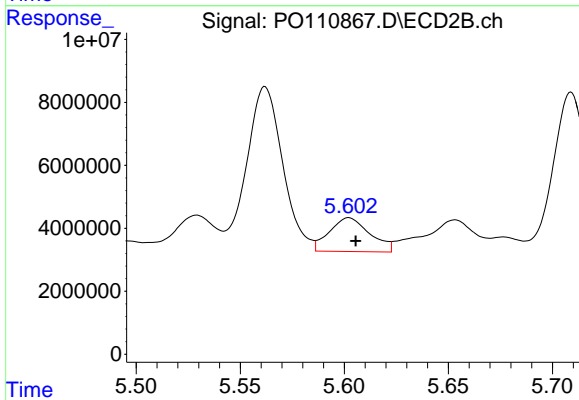
R.T.: 5.210 min  
 Delta R.T.: -0.004 min  
 Response: 68733019  
 Conc: 337.46 ng/ml



#25 AR-1248-5

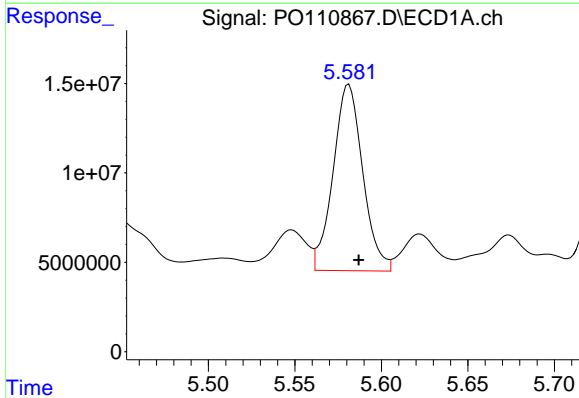
R.T.: 5.622 min  
 Delta R.T.: -0.005 min  
 Response: 29691224  
 Conc: 80.37 ng/ml

Instrument :  
 ECD\_O  
 ClientSampleId :  
 VNJ-210MS



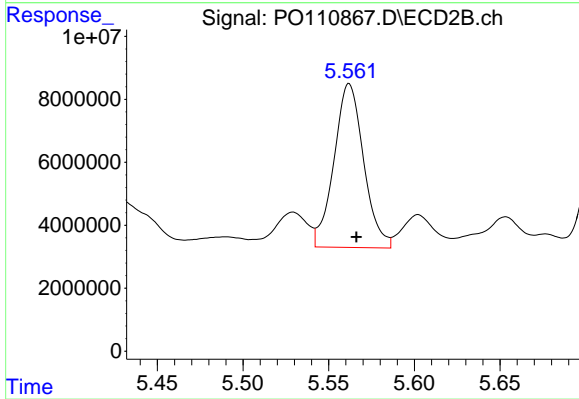
#25 AR-1248-5

R.T.: 5.602 min  
 Delta R.T.: -0.003 min  
 Response: 14518178  
 Conc: 73.55 ng/ml



#26 AR-1254-1

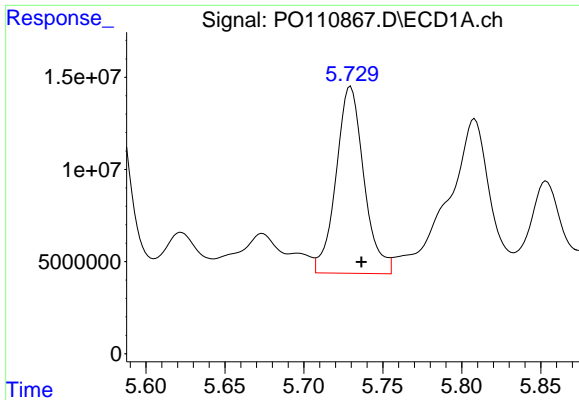
R.T.: 5.581 min  
 Delta R.T.: -0.006 min  
 Response: 123901306  
 Conc: 222.05 ng/ml



#26 AR-1254-1

R.T.: 5.562 min  
 Delta R.T.: -0.004 min  
 Response: 62730740  
 Conc: 208.06 ng/ml

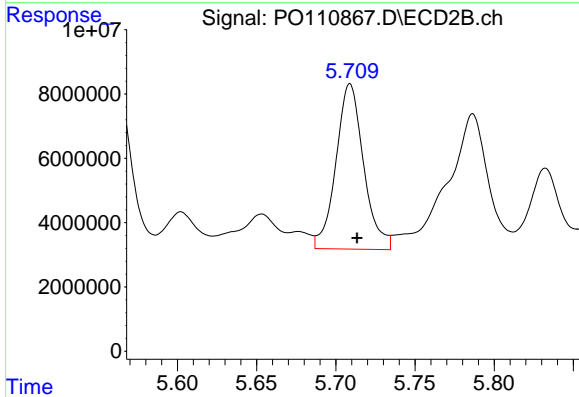




#27 AR-1254-2

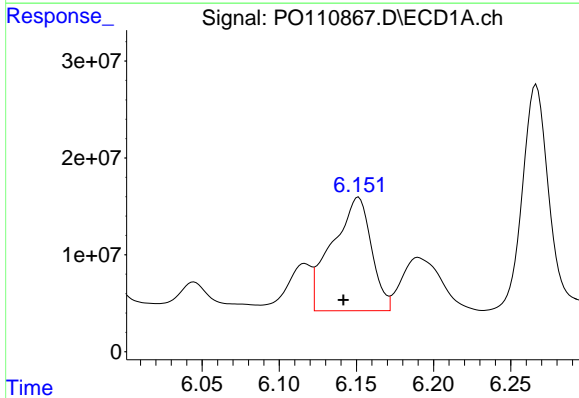
R.T.: 5.730 min  
 Delta R.T.: -0.007 min  
 Response: 124566163  
 Conc: 256.47 ng/ml

Instrument :  
 ECD\_O  
 ClientSampleId :  
 VNJ-210MS



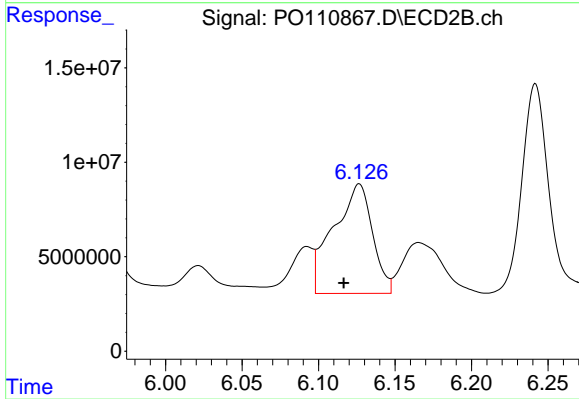
#27 AR-1254-2

R.T.: 5.709 min  
 Delta R.T.: -0.005 min  
 Response: 62532467  
 Conc: 236.25 ng/ml



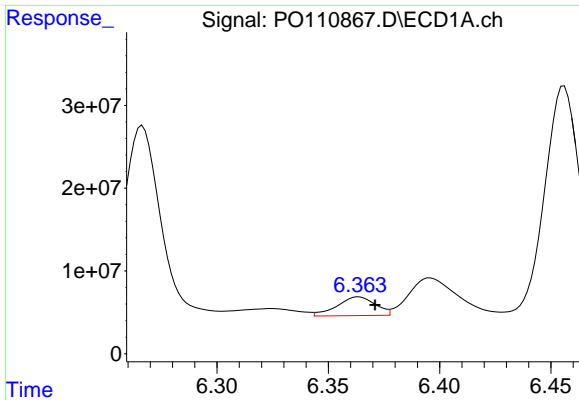
#28 AR-1254-3

R.T.: 6.151 min  
 Delta R.T.: 0.010 min  
 Response: 206595376  
 Conc: 263.78 ng/ml



#28 AR-1254-3

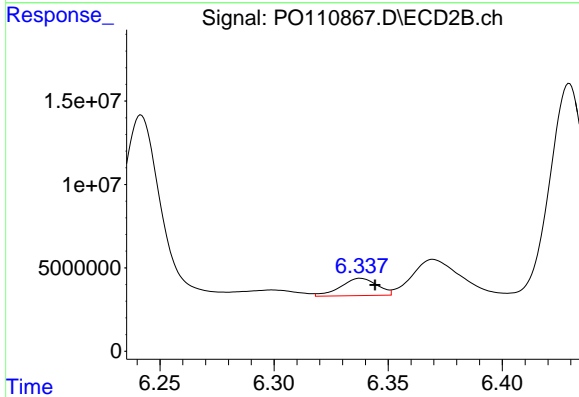
R.T.: 6.127 min  
 Delta R.T.: 0.010 min  
 Response: 102786243  
 Conc: 254.79 ng/ml



#29 AR-1254-4

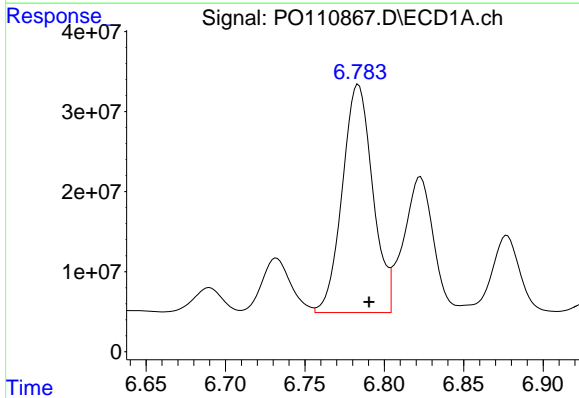
R.T.: 6.364 min  
 Delta R.T.: -0.007 min  
 Response: 27007349  
 Conc: 55.39 ng/ml

Instrument :  
 ECD\_O  
 ClientSampleId :  
 VNJ-210MS



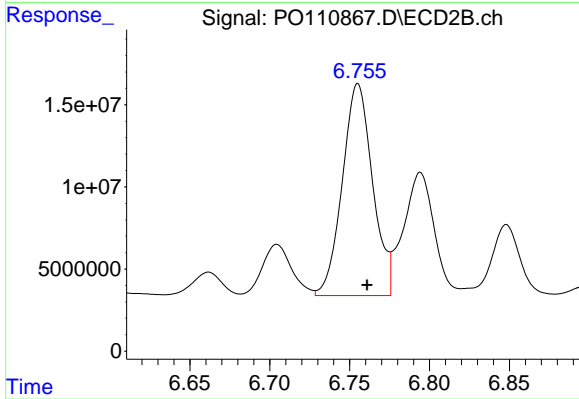
#29 AR-1254-4

R.T.: 6.338 min  
 Delta R.T.: -0.006 min  
 Response: 11521402  
 Conc: 50.16 ng/ml



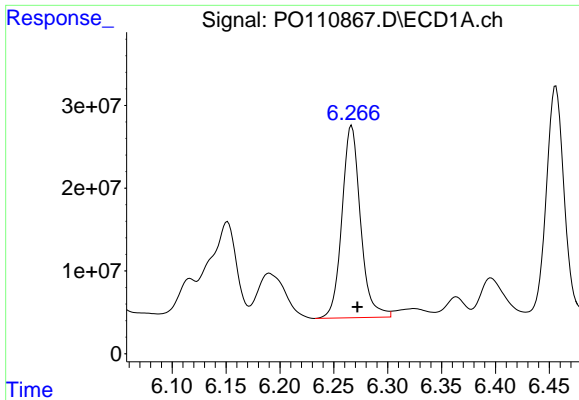
#30 AR-1254-5

R.T.: 6.784 min  
 Delta R.T.: -0.007 min  
 Response: 379453682  
 Conc: 541.38 ng/ml



#30 AR-1254-5

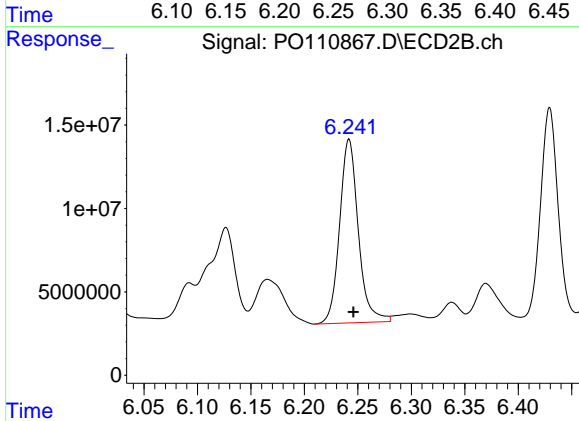
R.T.: 6.755 min  
 Delta R.T.: -0.006 min  
 Response: 170016463  
 Conc: 511.65 ng/ml



#31 AR-1260-1

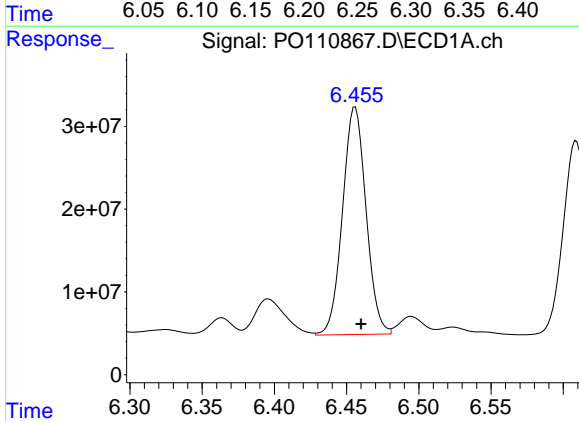
R.T.: 6.267 min  
 Delta R.T.: -0.005 min  
 Response: 278261311  
 Conc: 588.98 ng/ml

Instrument :  
 ECD\_O  
 ClientSampleId :  
 VNJ-210MS



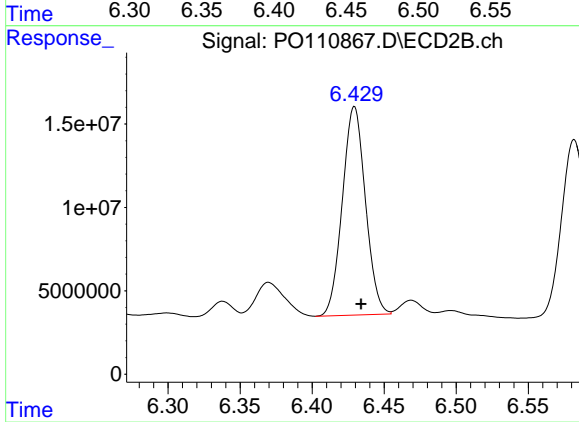
#31 AR-1260-1

R.T.: 6.242 min  
 Delta R.T.: -0.004 min  
 Response: 134214366  
 Conc: 545.67 ng/ml



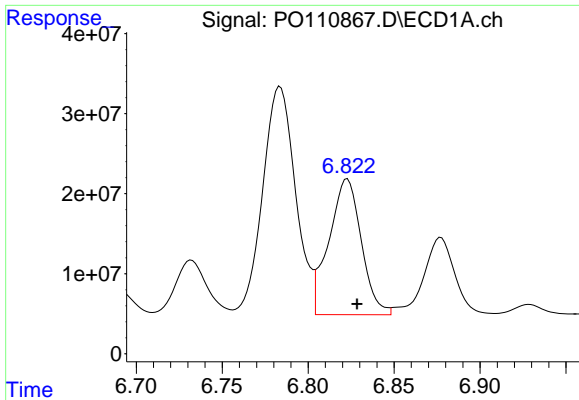
#32 AR-1260-2

R.T.: 6.456 min  
 Delta R.T.: -0.004 min  
 Response: 310517869  
 Conc: 529.51 ng/ml



#32 AR-1260-2

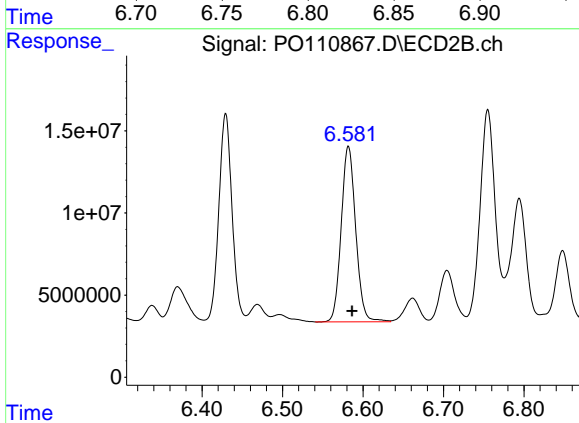
R.T.: 6.429 min  
 Delta R.T.: -0.005 min  
 Response: 139500991  
 Conc: 478.15 ng/ml



#33 AR-1260-3

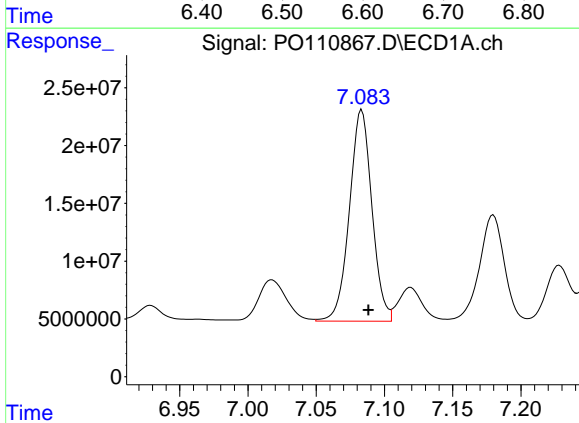
R.T.: 6.823 min  
 Delta R.T.: -0.006 min  
 Response: 222891109  
 Conc: 452.23 ng/ml

Instrument :  
 ECD\_O  
 ClientSampleId :  
 VNJ-210MS



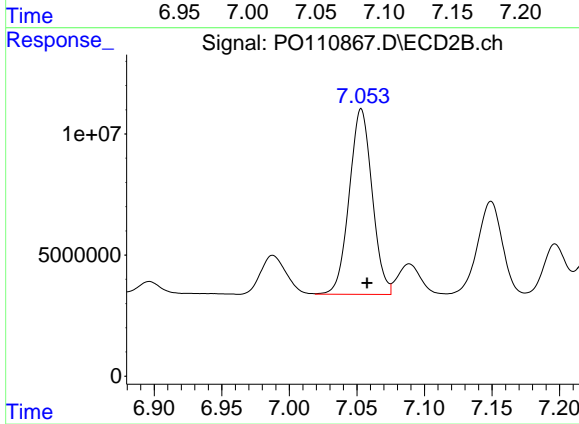
#33 AR-1260-3

R.T.: 6.582 min  
 Delta R.T.: -0.005 min  
 Response: 133726086  
 Conc: 493.67 ng/ml



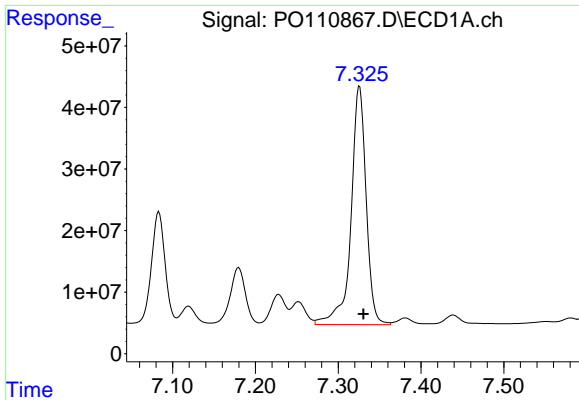
#34 AR-1260-4

R.T.: 7.083 min  
 Delta R.T.: -0.005 min  
 Response: 209950200  
 Conc: 494.67 ng/ml



#34 AR-1260-4

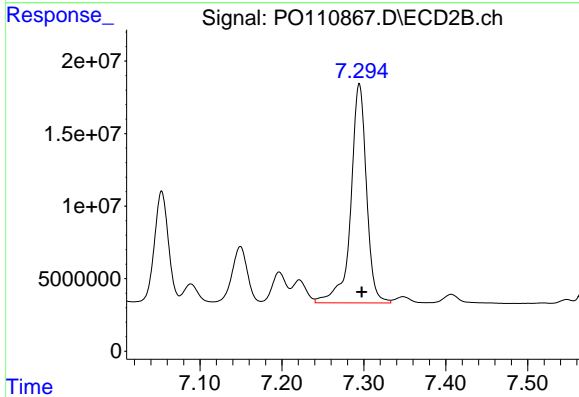
R.T.: 7.053 min  
 Delta R.T.: -0.004 min  
 Response: 90238636  
 Conc: 449.75 ng/ml



#35 AR-1260-5

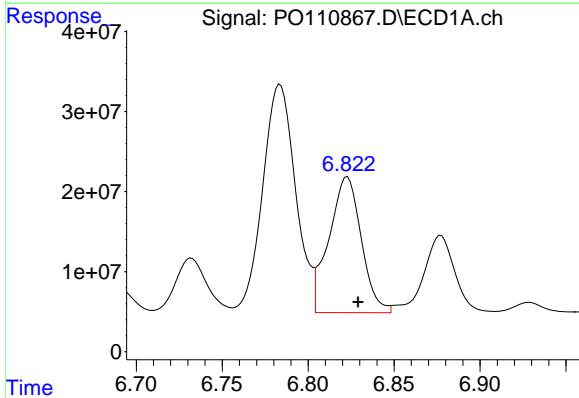
R.T.: 7.326 min  
 Delta R.T.: -0.005 min  
 Response: 492268845  
 Conc: 471.76 ng/ml

Instrument :  
 ECD\_O  
 ClientSampleId :  
 VNJ-210MS



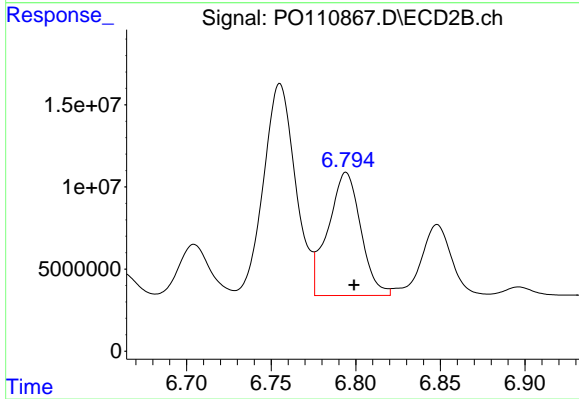
#35 AR-1260-5

R.T.: 7.295 min  
 Delta R.T.: -0.003 min  
 Response: 201428622  
 Conc: 438.98 ng/ml



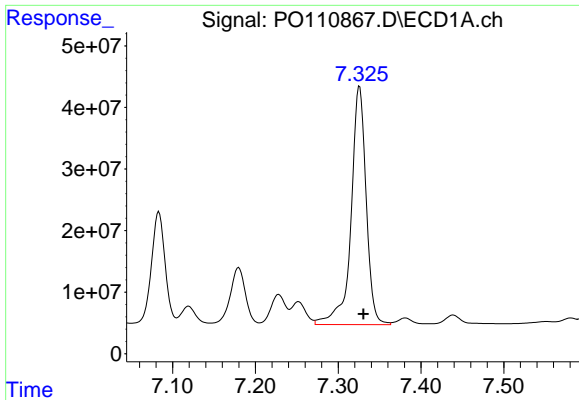
#36 AR-1262-1

R.T.: 6.823 min  
 Delta R.T.: -0.006 min  
 Response: 222891109  
 Conc: 317.75 ng/ml



#36 AR-1262-1

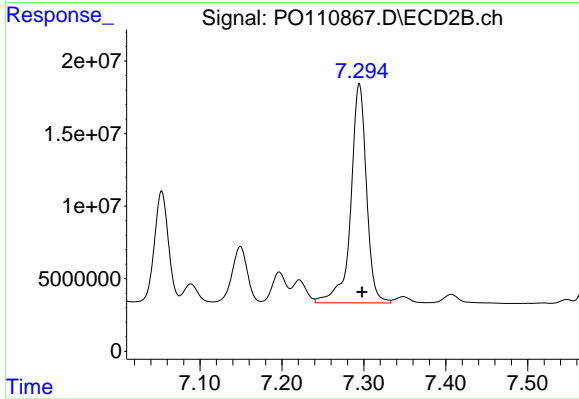
R.T.: 6.794 min  
 Delta R.T.: -0.005 min  
 Response: 100707025  
 Conc: 305.78 ng/ml



#37 AR-1262-2

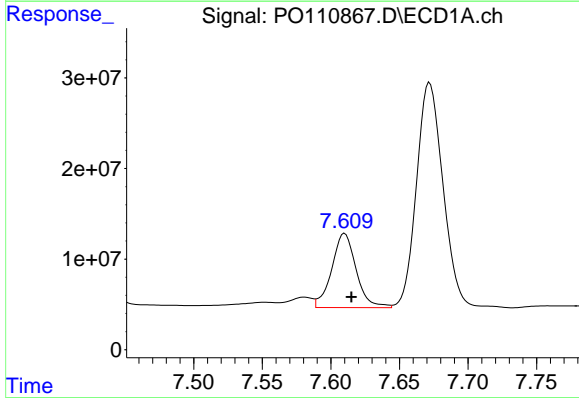
R.T.: 7.326 min  
 Delta R.T.: -0.005 min  
 Response: 492268845  
 Conc: 407.60 ng/ml

Instrument :  
 ECD\_O  
 ClientSampleId :  
 VNJ-210MS



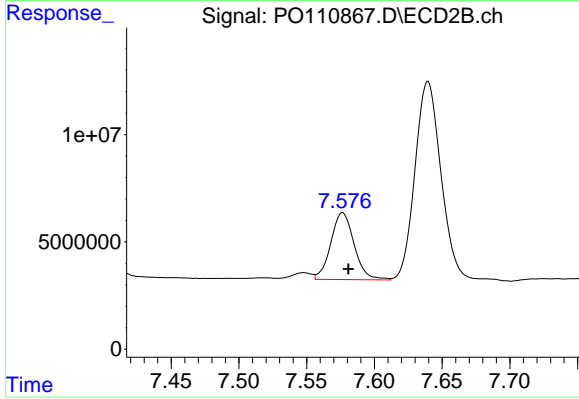
#37 AR-1262-2

R.T.: 7.295 min  
 Delta R.T.: -0.003 min  
 Response: 201428622  
 Conc: 396.16 ng/ml



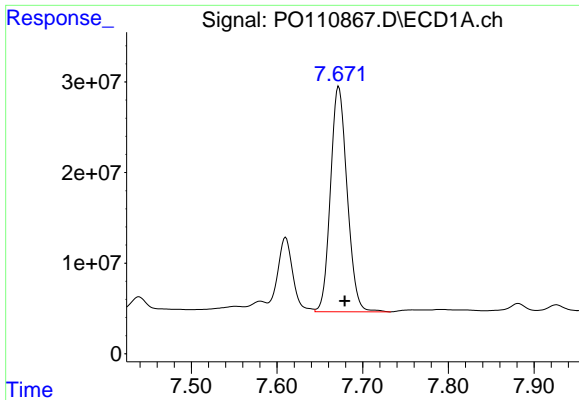
#38 AR-1262-3

R.T.: 7.610 min  
 Delta R.T.: -0.005 min  
 Response: 101268501  
 Conc: 198.92 ng/ml



#38 AR-1262-3

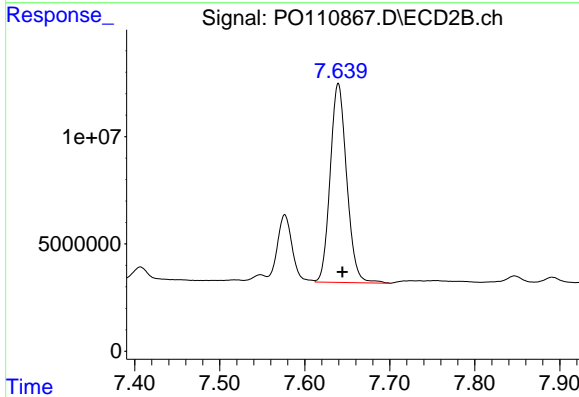
R.T.: 7.577 min  
 Delta R.T.: -0.004 min  
 Response: 37442563  
 Conc: 193.37 ng/ml



#39 AR-1262-4

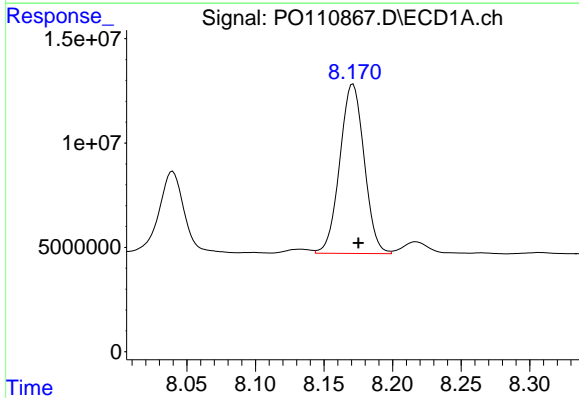
R.T.: 7.672 min  
 Delta R.T.: -0.007 min  
 Response: 335689471  
 Conc: 374.54 ng/ml

Instrument :  
 ECD\_O  
 ClientSampleId :  
 VNJ-210MS



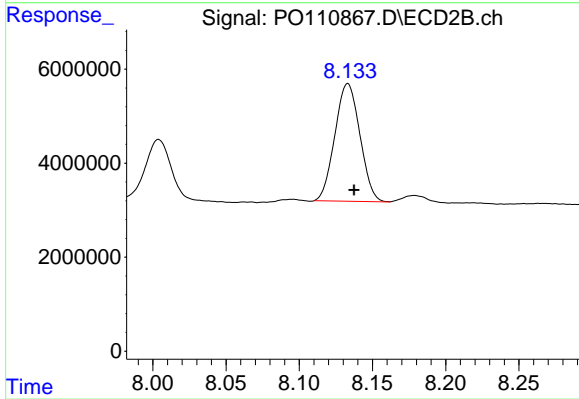
#39 AR-1262-4

R.T.: 7.640 min  
 Delta R.T.: -0.005 min  
 Response: 125054935  
 Conc: 360.33 ng/ml



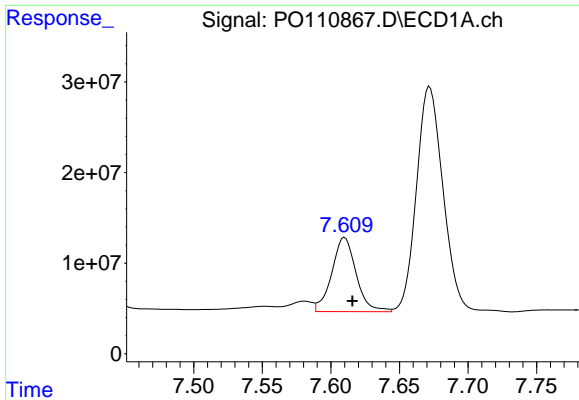
#40 AR-1262-5

R.T.: 8.171 min  
 Delta R.T.: -0.004 min  
 Response: 100364728  
 Conc: 249.05 ng/ml



#40 AR-1262-5

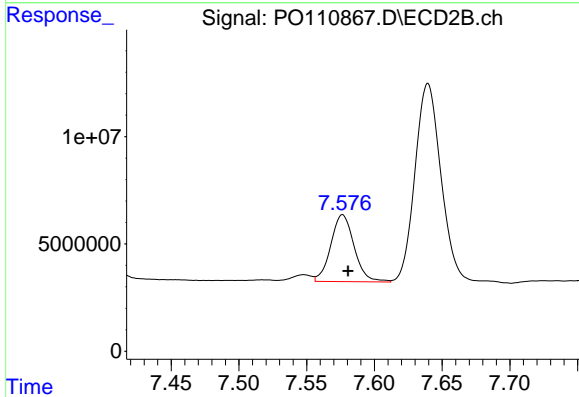
R.T.: 8.133 min  
 Delta R.T.: -0.004 min  
 Response: 29798172  
 Conc: 239.16 ng/ml



#41 AR-1268-1

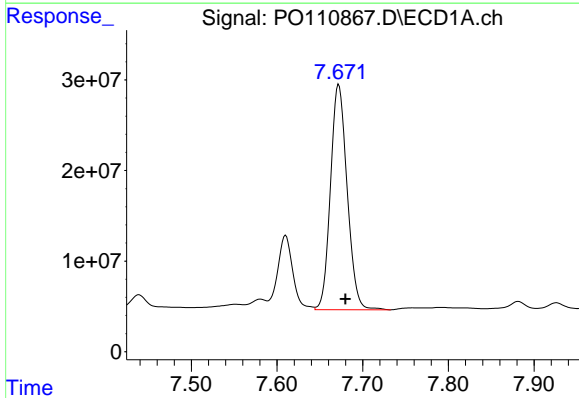
R.T.: 7.610 min  
 Delta R.T.: -0.005 min  
 Response: 101268501  
 Conc: 72.12 ng/ml

Instrument :  
 ECD\_O  
 ClientSampleId :  
 VNJ-210MS



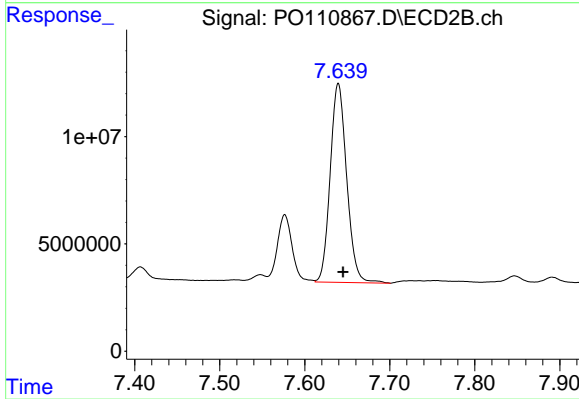
#41 AR-1268-1

R.T.: 7.577 min  
 Delta R.T.: -0.004 min  
 Response: 37442563  
 Conc: 68.36 ng/ml



#42 AR-1268-2

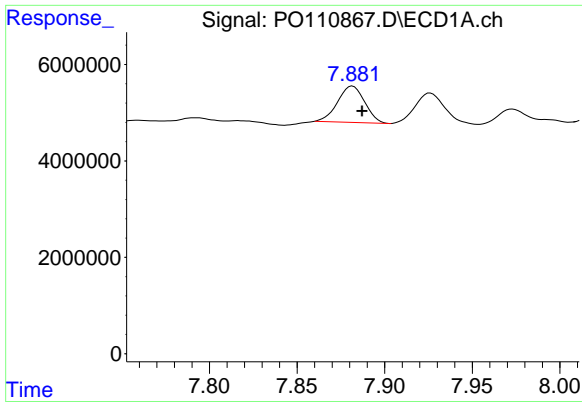
R.T.: 7.672 min  
 Delta R.T.: -0.008 min  
 Response: 335689471  
 Conc: 262.31 ng/ml



#42 AR-1268-2

R.T.: 7.640 min  
 Delta R.T.: -0.006 min  
 Response: 125054935  
 Conc: 251.37 ng/ml

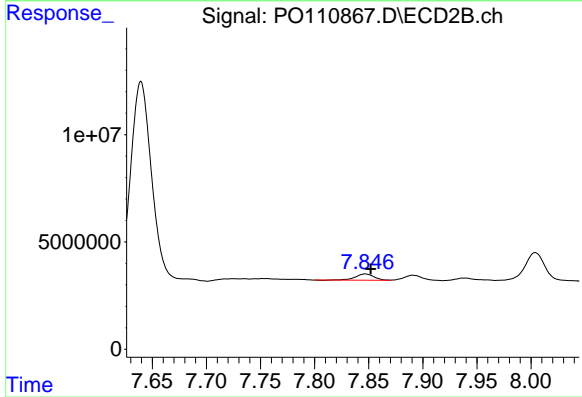




#43 AR-1268-3

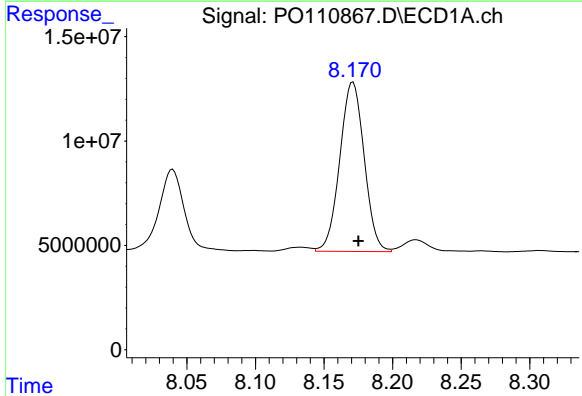
R.T.: 7.882 min  
 Delta R.T.: -0.005 min  
 Response: 8111439  
 Conc: 7.78 ng/ml

Instrument :  
 ECD\_O  
 ClientSampleId :  
 VNJ-210MS



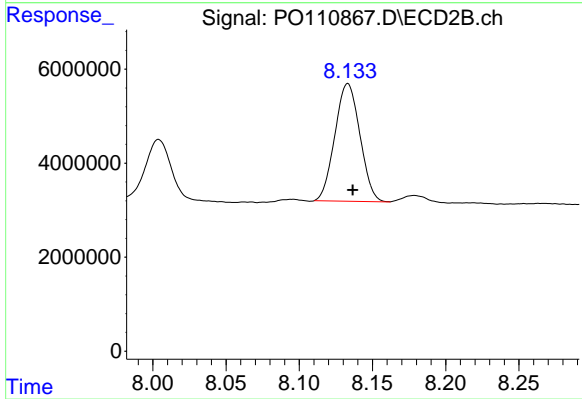
#43 AR-1268-3

R.T.: 7.847 min  
 Delta R.T.: -0.005 min  
 Response: 3598195  
 Conc: 9.68 ng/ml



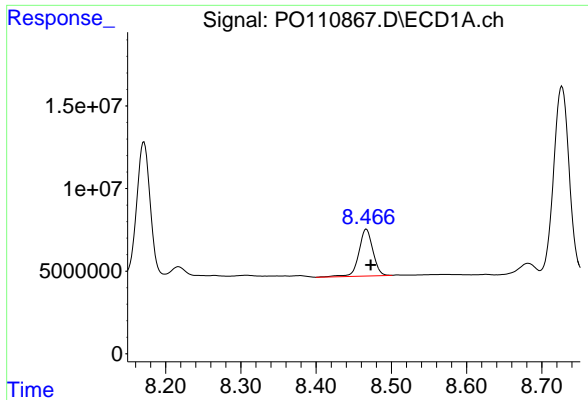
#44 AR-1268-4

R.T.: 8.171 min  
 Delta R.T.: -0.004 min  
 Response: 100364728  
 Conc: 225.97 ng/ml



#44 AR-1268-4

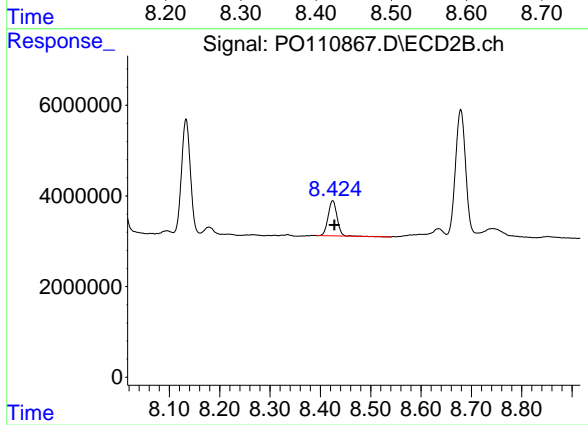
R.T.: 8.133 min  
 Delta R.T.: -0.003 min  
 Response: 29798172  
 Conc: 211.13 ng/ml



#45 AR-1268-5

R.T.: 8.467 min  
Delta R.T.: -0.006 min  
Response: 36810178  
Conc: 11.43 ng/ml

Instrument :  
ECD\_O  
ClientSampleId :  
VNJ-210MS



#45 AR-1268-5

R.T.: 8.425 min  
Delta R.T.: -0.004 min  
Response: 9596588  
Conc: 12.19 ng/ml