

Data Path : Z:\pestpcbsrv\HPCHEM1\ECD_0\Data\P0042925\
 Data File : PO110881.D
 Signal(s) : Signal #1: ECD1A.ch Signal #2: ECD2B.ch
 Acq On : 29 Apr 2025 23:50
 Operator : YP/AJ
 Sample : PB167790BL
 Misc :
 ALS Vial : 27 Sample Multiplier: 1

Instrument :
 ECD_0
 ClientSampleId :
 PB167790BL

Integration File signal 1: autoint1.e
 Integration File signal 2: autoint2.e
 Quant Time: Apr 30 02:31:38 2025
 Quant Method : Z:\pestpcbsrv\HPCHEM1\ECD_0\methods\P0041025.M
 Quant Title : GC EXTRACTABLES
 QLast Update : Fri Apr 11 02:12:41 2025
 Response via : Initial Calibration
 Integrator: ChemStation

Volume Inj. : 2 µl
 Signal #1 Phase : ZB-MR1 Signal #2 Phase: ZB-MR2
 Signal #1 Info : 30Mx0.32mmx 0.50µ Signal #2 Info : 30M x 0.32mm x 0.25µm

Compound	RT#1	RT#2	Resp#1	Resp#2	ng/ml	ng/ml
----------	------	------	--------	--------	-------	-------

System Monitoring Compounds

1) SA Tetrachlo...	3.686	3.683	183.0E6	95198154	20.920	19.079
2) SA Decachlor...	8.729	8.680	148.2E6	36145109	18.770	18.777

Target Compounds

3) L1 AR-1016-1	4.782	4.770	446636	338946	1.361	1.931 #
4) L1 AR-1016-2	4.809	4.787	201509	211345	0.443	0.840 #
5) L1 AR-1016-3	4.854	4.957	91080	52905	0.282	0.390 #
6) L1 AR-1016-4	4.979	5.001	220105	537633	0.883	4.701 #
7) L1 AR-1016-5	5.233	5.218	406459	73235	1.511	0.491 #
8) L2 AR-1221-1	3.907	3.886	459840	47761	3.896	0.715 #
9) L2 AR-1221-2	3.987	3.982	3619560	1872693	40.971	37.382
10) L2 AR-1221-3	4.060	4.051	246540	106137	0.937	0.712
11) L3 AR-1232-1	4.060	4.051	246540	106137	1.204	0.923
12) L3 AR-1232-2	4.555	4.787	92633	211345	0.868	1.906 #
13) L3 AR-1232-3	4.809	4.957	201509	52905	1.009	0.925
14) L3 AR-1232-4	4.979	5.047	220105	80986	2.152	1.501 #
15) L3 AR-1232-5	5.021	5.218	717697	73235	10.416	1.282 #
16) L4 AR-1242-1	4.782	4.770	446636	338946	1.609	2.267 #
17) L4 AR-1242-2	4.809	4.787	201509	211345	0.522	0.991 #
18) L4 AR-1242-3	4.854	4.957	91080	52905	0.327	0.458 #
19) L4 AR-1242-4	4.979	5.047	220105	80986	1.041	0.674 #
20) L4 AR-1242-5	5.629	5.556	381606	188388	1.686	1.298
21) L5 AR-1248-1	4.782	4.770	446636	338946	2.098	2.944 #
22) L5 AR-1248-2	5.021	5.001	717697	537633	2.425	3.301 #
23) L5 AR-1248-3	5.233	5.047	406459	80986	1.099	0.461 #
24) L5 AR-1248-4	5.586	5.218	292873	73235	0.563	0.360 #
25) L5 AR-1248-5	5.629	5.606	381606	378446	1.033	1.917 #
26) L6 AR-1254-1	5.586	5.556	292873	188388	0.525	0.625
27) L6 AR-1254-2	5.735	5.714	314226	333023	0.647	1.258 #
28) L6 AR-1254-3	6.143	6.114	281718	215705	0.360	0.535 #
29) L6 AR-1254-4	6.369	6.334	610188	124282	1.251	0.541 #
30) L6 AR-1254-5	6.790	6.756	99410	101225	0.142	0.305 #
31) L7 AR-1260-1	6.269	6.244	317651	173928	0.672	0.707
32) L7 AR-1260-2	6.462	6.451	289534	45381	0.494	0.156 #
33) L7 AR-1260-3	6.821	6.604	640652	162551	1.300	0.600 #
34) L7 AR-1260-4	7.098	7.055	235333	121974	0.554	0.608
35) L7 AR-1260-5	7.333	7.300	1315215	333912	1.260	0.728 #
36) L8 AR-1262-1	6.821	6.794	640652	330455	0.913	1.003
37) L8 AR-1262-2	7.333	7.300	1315215	333912	1.089	0.657 #
38) L8 AR-1262-3	7.614	7.576	428009	171559	0.841	0.886
39) L8 AR-1262-4	7.679	7.637	477523	159975	0.533	0.461
40) L8 AR-1262-5	8.169	8.141	540407	19864	1.341	0.159 #
41) L9 AR-1268-1	7.614	7.576	428009	171559	0.305	0.313

Data Path : Z:\pestpcbsrv\HPCHEM1\ECD_0\Data\P0042925\
 Data File : PO110881.D
 Signal(s) : Signal #1: ECD1A.ch Signal #2: ECD2B.ch
 Acq On : 29 Apr 2025 23:50
 Operator : YP/AJ
 Sample : PB167790BL
 Misc :
 ALS Vial : 27 Sample Multiplier: 1

Instrument :
 ECD_0
 ClientSampleId :
 PB167790BL

Integration File signal 1: autoint1.e
 Integration File signal 2: autoint2.e
 Quant Time: Apr 30 02:31:38 2025
 Quant Method : Z:\pestpcbsrv\HPCHEM1\ECD_0\methods\P0041025.M
 Quant Title : GC EXTRACTABLES
 QLast Update : Fri Apr 11 02:12:41 2025
 Response via : Initial Calibration
 Integrator: ChemStation

Volume Inj. : 2 µl
 Signal #1 Phase : ZB-MR1 Signal #2 Phase: ZB-MR2
 Signal #1 Info : 30Mx0.32mmx 0.50µ Signal #2 Info : 30M x 0.32mm x 0.25µm

	Compound	RT#1	RT#2	Resp#1	Resp#2	ng/ml	ng/ml
42)	L9 AR-1268-2	7.679	7.637	477523	159975	0.373	0.322
43)	L9 AR-1268-3	7.883	7.849	295153	201951	0.283	0.544 #
44)	L9 AR-1268-4	8.169	8.141	540407	19864	1.217	0.141 #
45)	L9 AR-1268-5	8.470	8.427	944482	368116	0.293	0.468 #

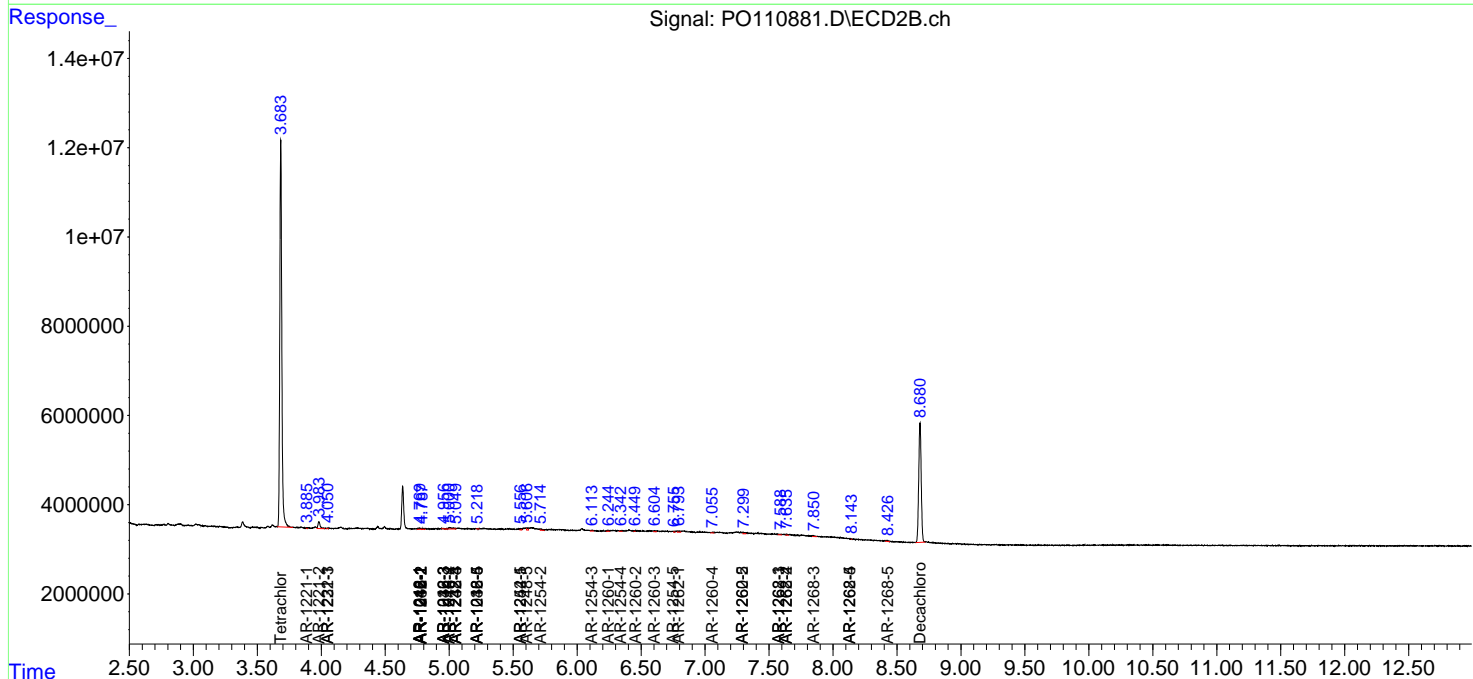
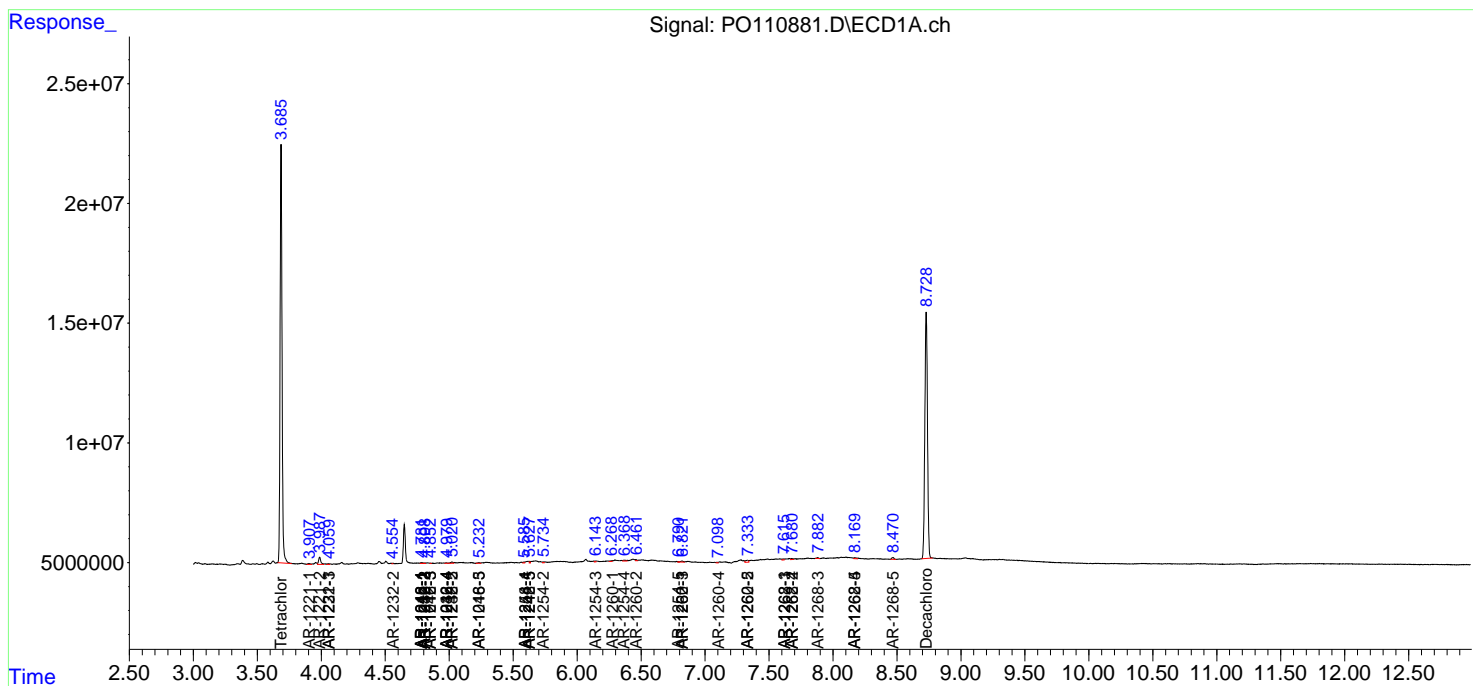
(f)=RT Delta > 1/2 Window (#)=Amounts differ by > 25% (m)=manual int.

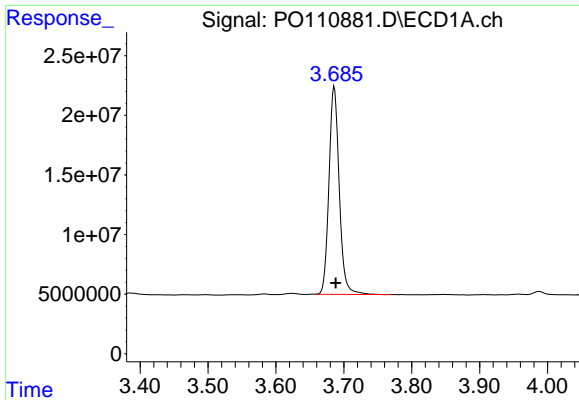
Data Path : Z:\pestpcbsrv\HPCHEM1\ECD_O\Data\PO042925\
 Data File : PO110881.D
 Signal(s) : Signal #1: ECD1A.ch Signal #2: ECD2B.ch
 Acq On : 29 Apr 2025 23:50
 Operator : YP/AJ
 Sample : PB167790BL
 Misc :
 ALS Vial : 27 Sample Multiplier: 1

Instrument :
 ECD_O
 ClientSampleId :
 PB167790BL

Integration File signal 1: autoint1.e
 Integration File signal 2: autoint2.e
 Quant Time: Apr 30 02:31:38 2025
 Quant Method : Z:\pestpcbsrv\HPCHEM1\ECD_O\methods\PO041025.M
 Quant Title : GC EXTRACTABLES
 QLast Update : Fri Apr 11 02:12:41 2025
 Response via : Initial Calibration
 Integrator: ChemStation

Volume Inj. : 2 µl
 Signal #1 Phase : ZB-MR1 Signal #2 Phase: ZB-MR2
 Signal #1 Info : 30Mx0.32mmx 0.50µ Signal #2 Info : 30M x 0.32mm x 0.25µm

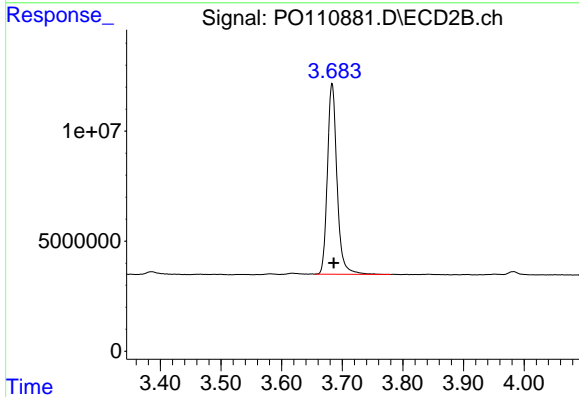




#1 Tetrachloro-m-xylene

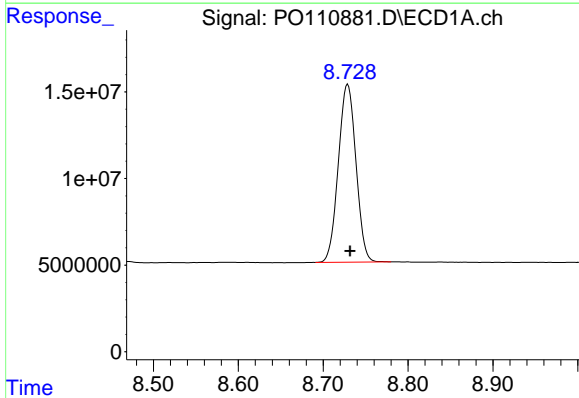
R.T.: 3.686 min
 Delta R.T.: -0.002 min
 Response: 183030010
 Conc: 20.92 ng/ml

Instrument :
 ECD_O
 ClientSampleId :
 PB167790BL



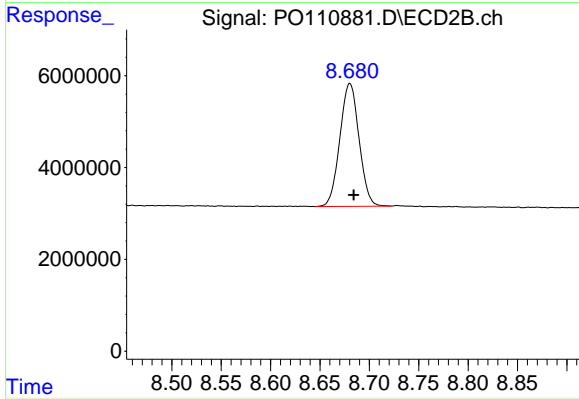
#1 Tetrachloro-m-xylene

R.T.: 3.683 min
 Delta R.T.: -0.003 min
 Response: 95198154
 Conc: 19.08 ng/ml



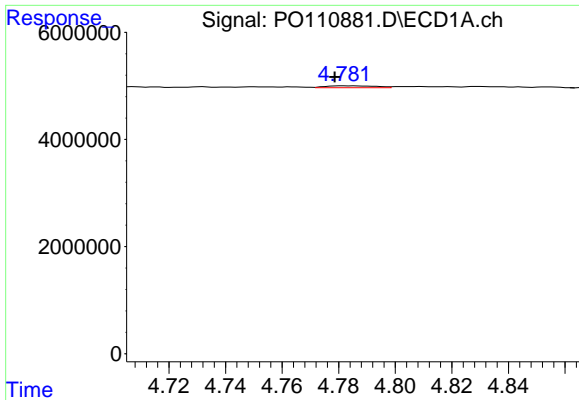
#2 Decachlorobiphenyl

R.T.: 8.729 min
 Delta R.T.: -0.003 min
 Response: 148191116
 Conc: 18.77 ng/ml



#2 Decachlorobiphenyl

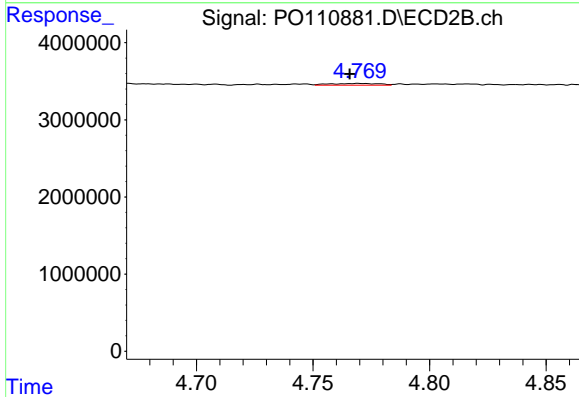
R.T.: 8.680 min
 Delta R.T.: -0.004 min
 Response: 36145109
 Conc: 18.78 ng/ml



#3 AR-1016-1

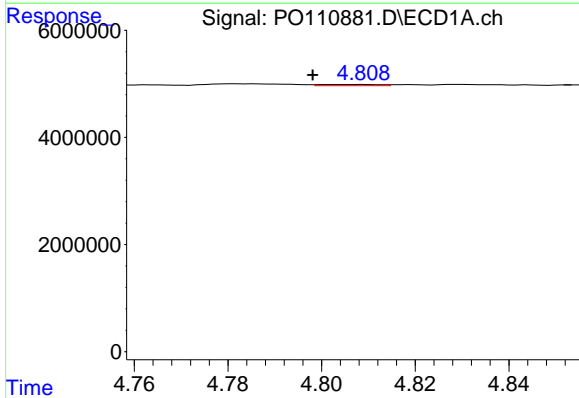
R.T.: 4.782 min
 Delta R.T.: 0.003 min
 Response: 446636
 Conc: 1.36 ng/ml

Instrument :
 ECD_O
 ClientSampleId :
 PB167790BL



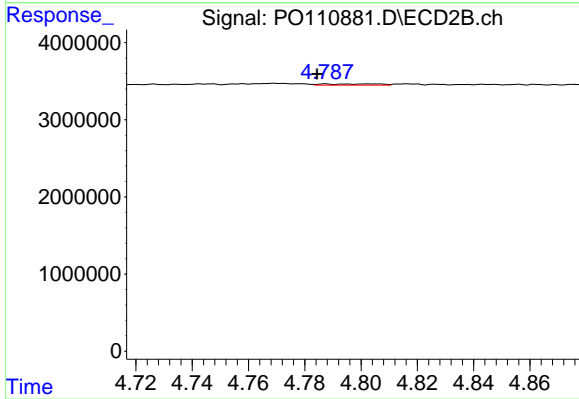
#3 AR-1016-1

R.T.: 4.770 min
 Delta R.T.: 0.004 min
 Response: 338946
 Conc: 1.93 ng/ml



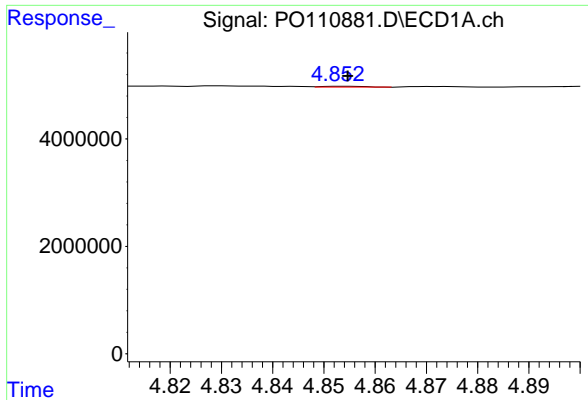
#4 AR-1016-2

R.T.: 4.809 min
 Delta R.T.: 0.010 min
 Response: 201509
 Conc: 0.44 ng/ml



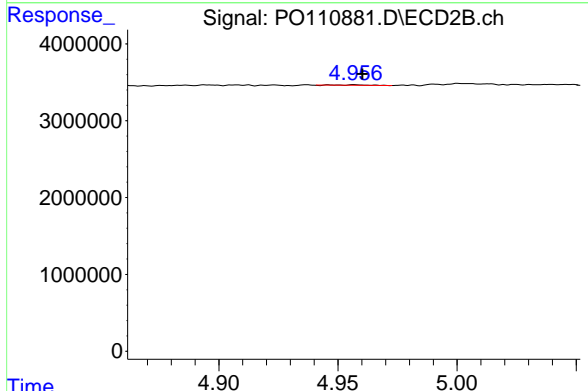
#4 AR-1016-2

R.T.: 4.787 min
 Delta R.T.: 0.003 min
 Response: 211345
 Conc: 0.84 ng/ml

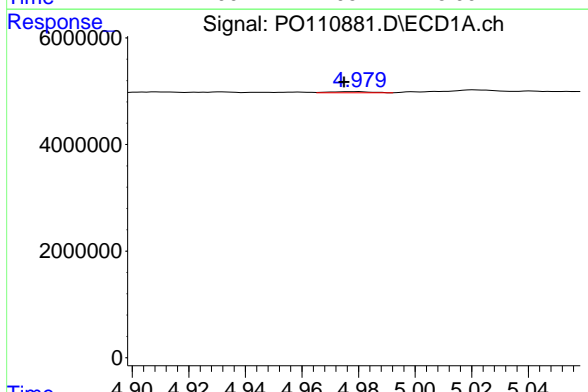


#5 AR-1016-3
 R.T.: 4.854 min
 Delta R.T.: 0.000 min
 Response: 91080
 Conc: 0.28 ng/ml

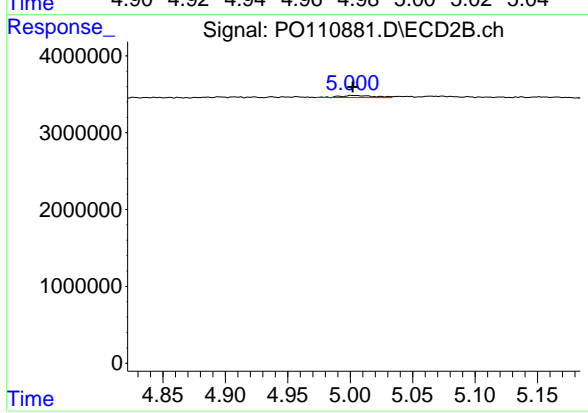
Instrument :
 ECD_O
 ClientSampleId :
 PB167790BL



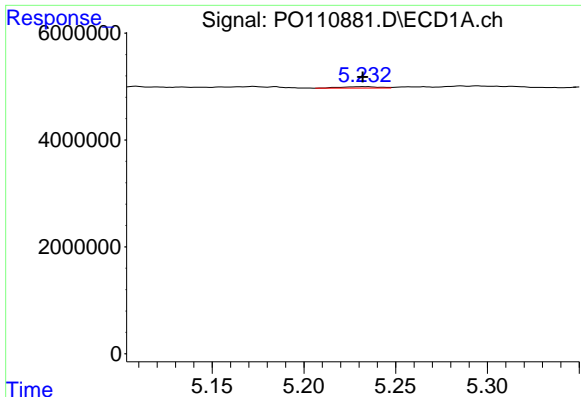
#5 AR-1016-3
 R.T.: 4.957 min
 Delta R.T.: -0.003 min
 Response: 52905
 Conc: 0.39 ng/ml



#6 AR-1016-4
 R.T.: 4.979 min
 Delta R.T.: 0.004 min
 Response: 220105
 Conc: 0.88 ng/ml



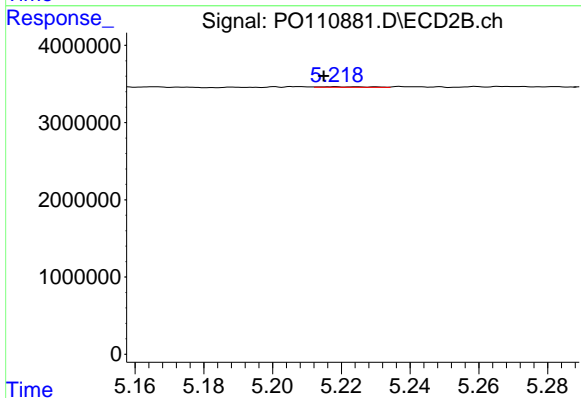
#6 AR-1016-4
 R.T.: 5.001 min
 Delta R.T.: 0.000 min
 Response: 537633
 Conc: 4.70 ng/ml



#7 AR-1016-5

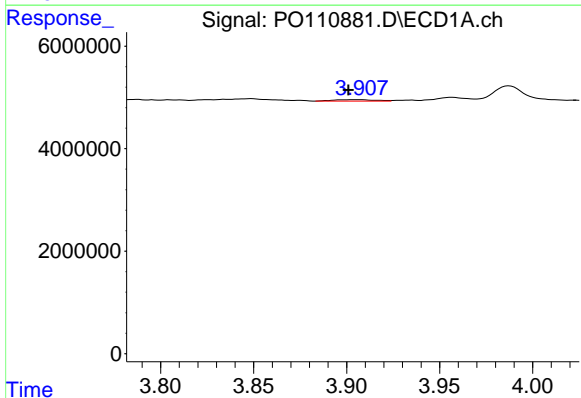
R.T.: 5.233 min
 Delta R.T.: 0.000 min
 Response: 406459
 Conc: 1.51 ng/ml

Instrument :
 ECD_O
 ClientSampleId :
 PB167790BL



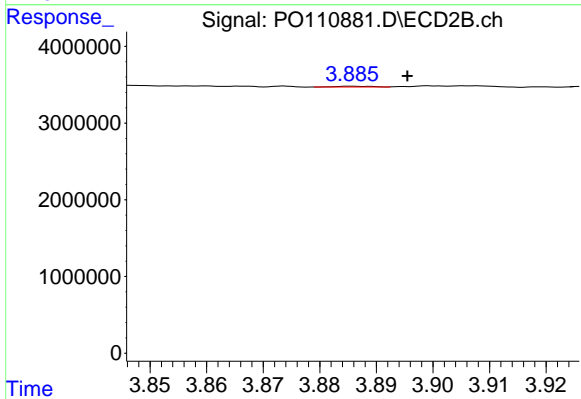
#7 AR-1016-5

R.T.: 5.218 min
 Delta R.T.: 0.003 min
 Response: 73235
 Conc: 0.49 ng/ml



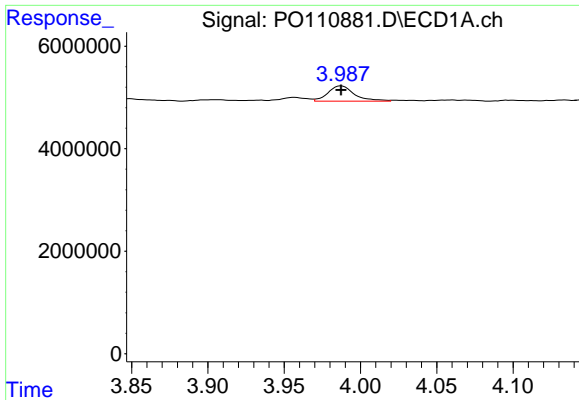
#8 AR-1221-1

R.T.: 3.907 min
 Delta R.T.: 0.006 min
 Response: 459840
 Conc: 3.90 ng/ml



#8 AR-1221-1

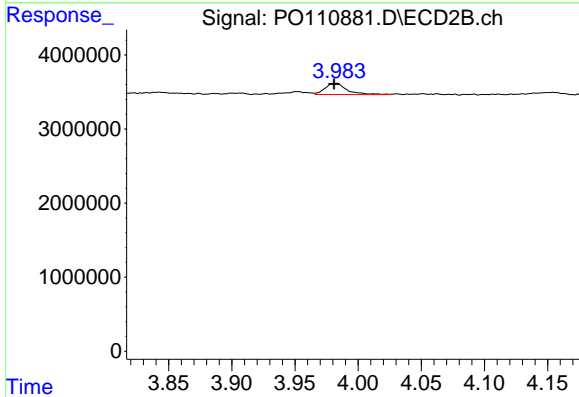
R.T.: 3.886 min
 Delta R.T.: -0.009 min
 Response: 47761
 Conc: 0.72 ng/ml



#9 AR-1221-2

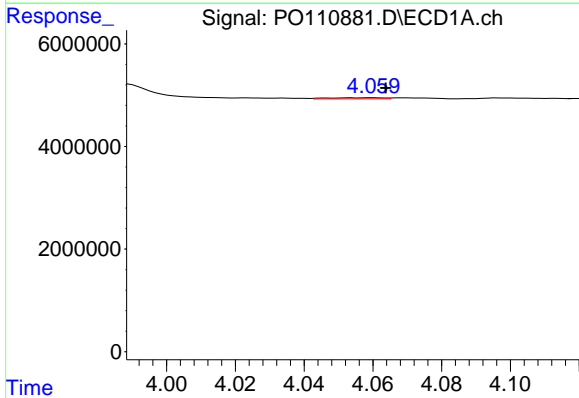
R.T.: 3.987 min
 Delta R.T.: 0.000 min
 Response: 3619560
 Conc: 40.97 ng/ml

Instrument :
 ECD_O
 ClientSampleId :
 PB167790BL



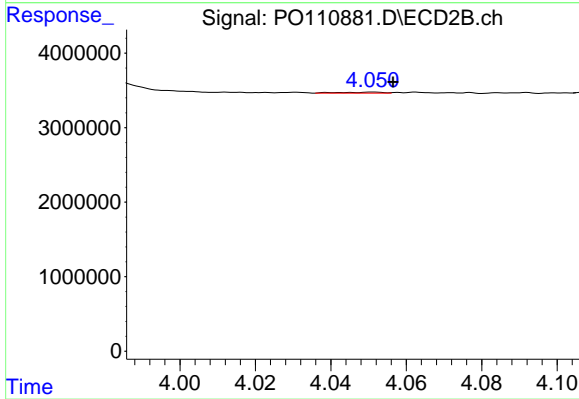
#9 AR-1221-2

R.T.: 3.982 min
 Delta R.T.: 0.001 min
 Response: 1872693
 Conc: 37.38 ng/ml



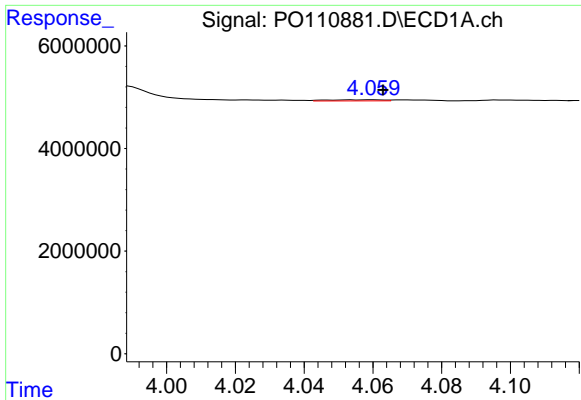
#10 AR-1221-3

R.T.: 4.060 min
 Delta R.T.: -0.004 min
 Response: 246540
 Conc: 0.94 ng/ml



#10 AR-1221-3

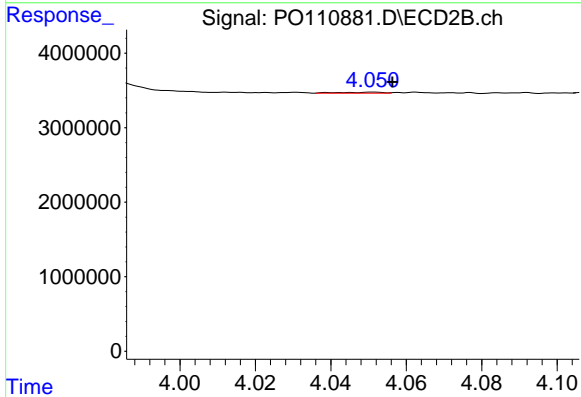
R.T.: 4.051 min
 Delta R.T.: -0.005 min
 Response: 106137
 Conc: 0.71 ng/ml



#11 AR-1232-1

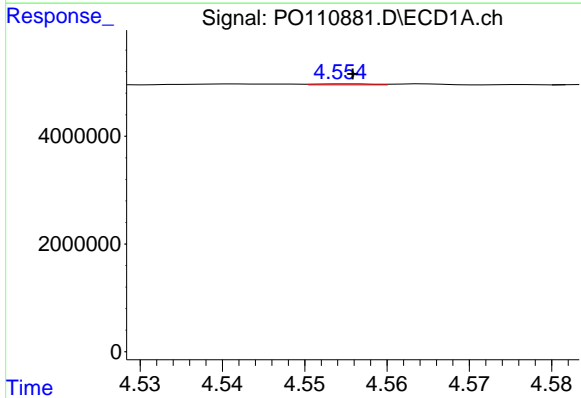
R.T.: 4.060 min
 Delta R.T.: -0.003 min
 Response: 246540
 Conc: 1.20 ng/ml

Instrument :
 ECD_O
 ClientSampleId :
 PB167790BL



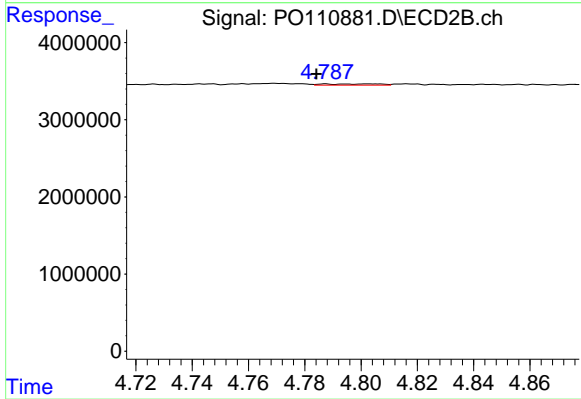
#11 AR-1232-1

R.T.: 4.051 min
 Delta R.T.: -0.005 min
 Response: 106137
 Conc: 0.92 ng/ml



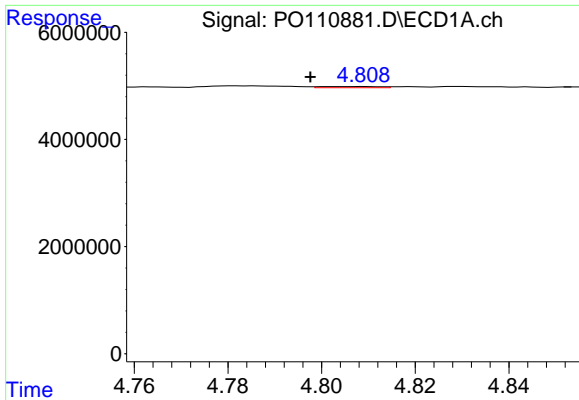
#12 AR-1232-2

R.T.: 4.555 min
 Delta R.T.: 0.000 min
 Response: 92633
 Conc: 0.87 ng/ml



#12 AR-1232-2

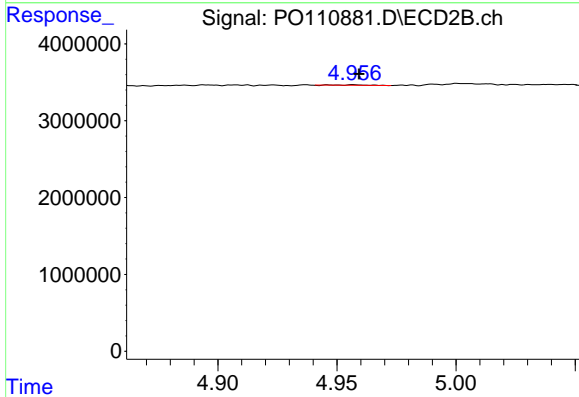
R.T.: 4.787 min
 Delta R.T.: 0.003 min
 Response: 211345
 Conc: 1.91 ng/ml



#13 AR-1232-3

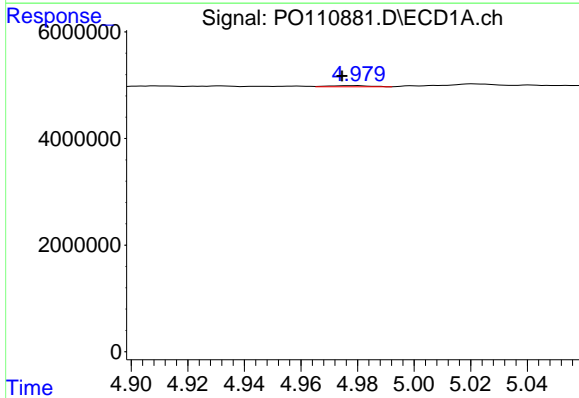
R.T.: 4.809 min
 Delta R.T.: 0.011 min
 Response: 201509
 Conc: 1.01 ng/ml

Instrument :
 ECD_O
 ClientSampleId :
 PB167790BL



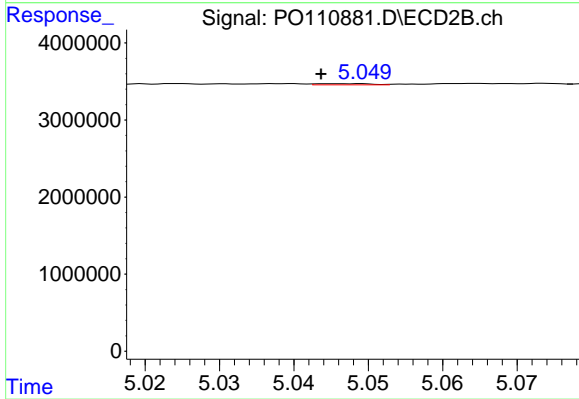
#13 AR-1232-3

R.T.: 4.957 min
 Delta R.T.: -0.002 min
 Response: 52905
 Conc: 0.92 ng/ml



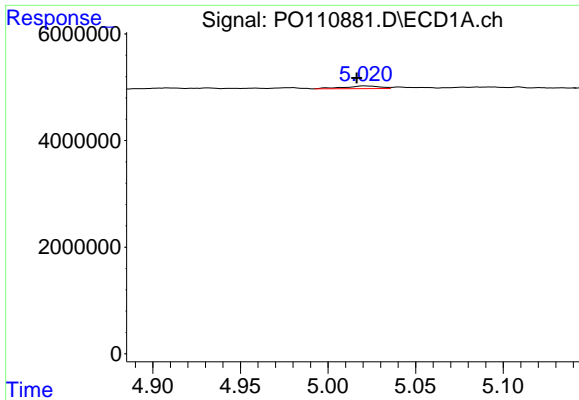
#14 AR-1232-4

R.T.: 4.979 min
 Delta R.T.: 0.005 min
 Response: 220105
 Conc: 2.15 ng/ml



#14 AR-1232-4

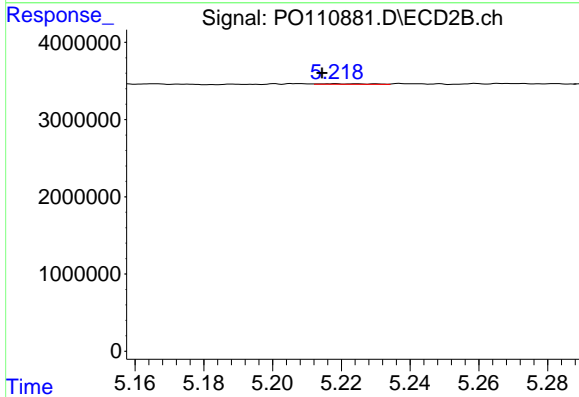
R.T.: 5.047 min
 Delta R.T.: 0.004 min
 Response: 80986
 Conc: 1.50 ng/ml



#15 AR-1232-5

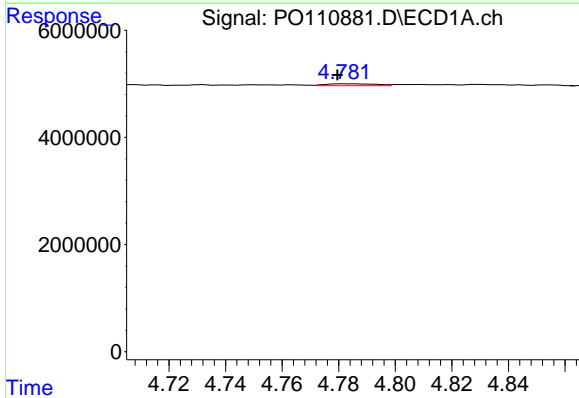
R.T.: 5.021 min
 Delta R.T.: 0.004 min
 Response: 717697
 Conc: 10.42 ng/ml

Instrument :
 ECD_O
 ClientSampleId :
 PB167790BL



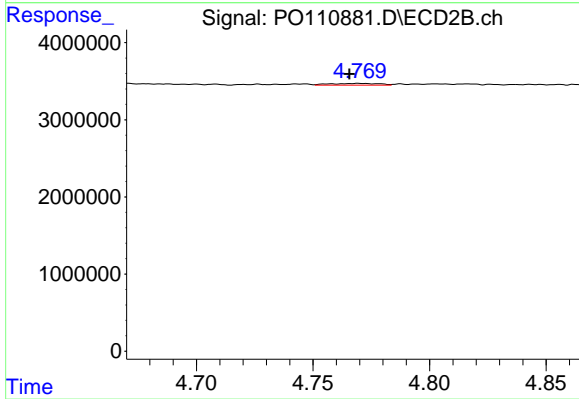
#15 AR-1232-5

R.T.: 5.218 min
 Delta R.T.: 0.003 min
 Response: 73235
 Conc: 1.28 ng/ml



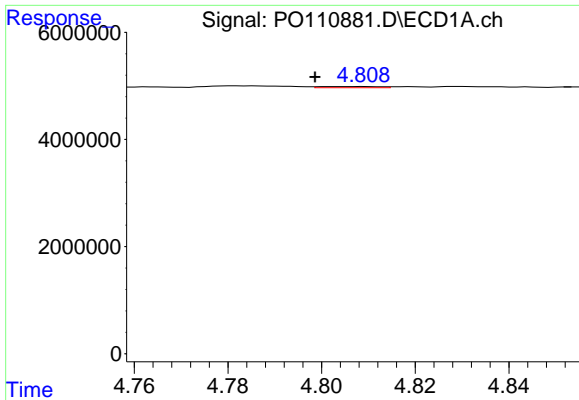
#16 AR-1242-1

R.T.: 4.782 min
 Delta R.T.: 0.002 min
 Response: 446636
 Conc: 1.61 ng/ml



#16 AR-1242-1

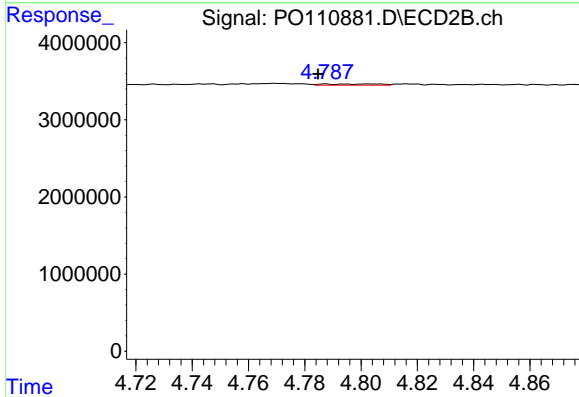
R.T.: 4.770 min
 Delta R.T.: 0.004 min
 Response: 338946
 Conc: 2.27 ng/ml



#17 AR-1242-2

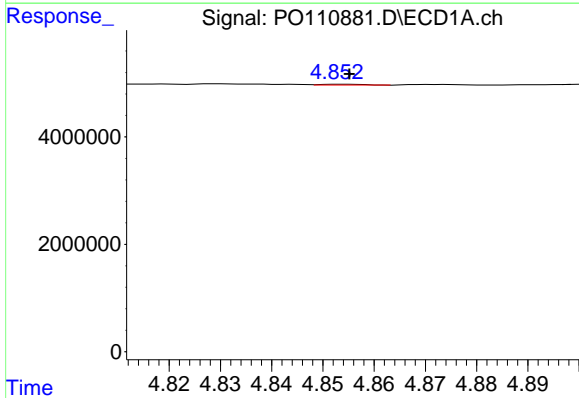
R.T.: 4.809 min
 Delta R.T.: 0.010 min
 Response: 201509
 Conc: 0.52 ng/ml

Instrument :
 ECD_O
 ClientSampleId :
 PB167790BL



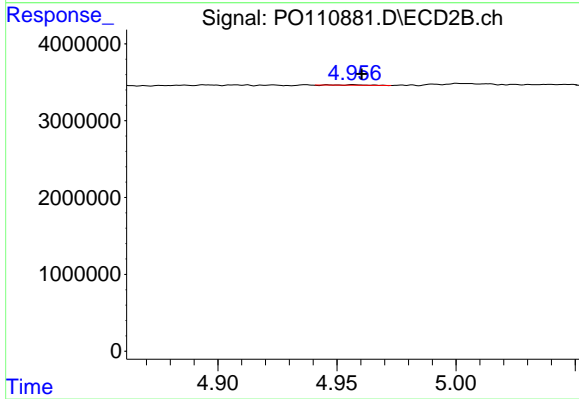
#17 AR-1242-2

R.T.: 4.787 min
 Delta R.T.: 0.003 min
 Response: 211345
 Conc: 0.99 ng/ml



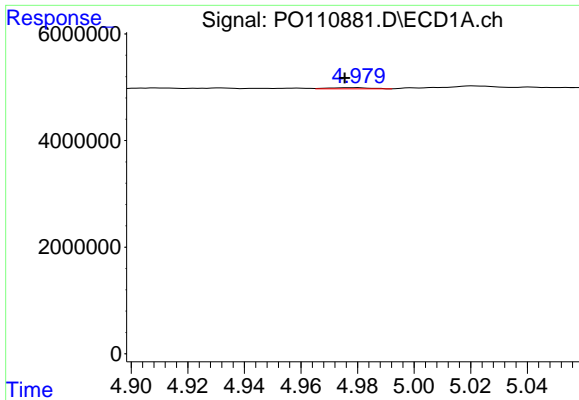
#18 AR-1242-3

R.T.: 4.854 min
 Delta R.T.: -0.001 min
 Response: 91080
 Conc: 0.33 ng/ml



#18 AR-1242-3

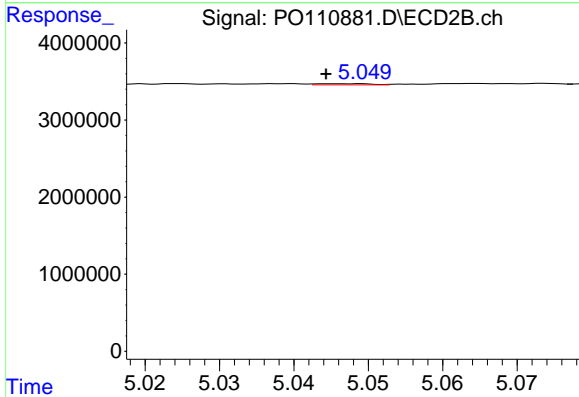
R.T.: 4.957 min
 Delta R.T.: -0.003 min
 Response: 52905
 Conc: 0.46 ng/ml



#19 AR-1242-4

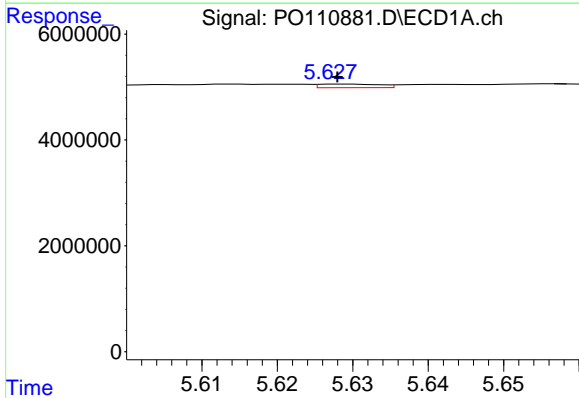
R.T.: 4.979 min
 Delta R.T.: 0.004 min
 Response: 220105
 Conc: 1.04 ng/ml

Instrument :
 ECD_O
 ClientSampleId :
 PB167790BL



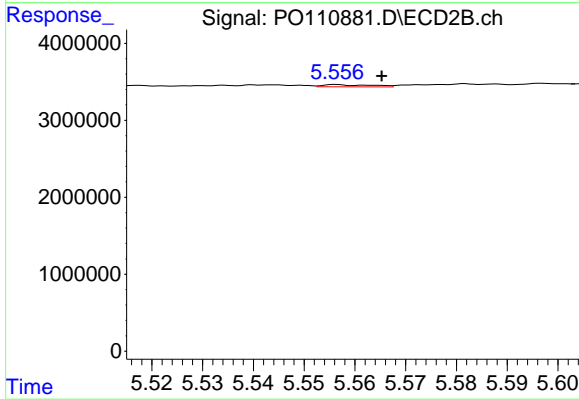
#19 AR-1242-4

R.T.: 5.047 min
 Delta R.T.: 0.003 min
 Response: 80986
 Conc: 0.67 ng/ml



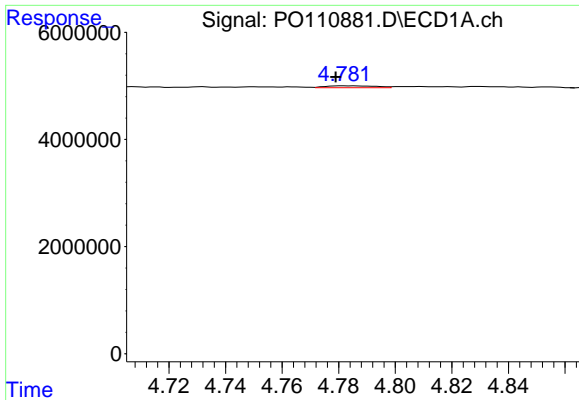
#20 AR-1242-5

R.T.: 5.629 min
 Delta R.T.: 0.000 min
 Response: 381606
 Conc: 1.69 ng/ml



#20 AR-1242-5

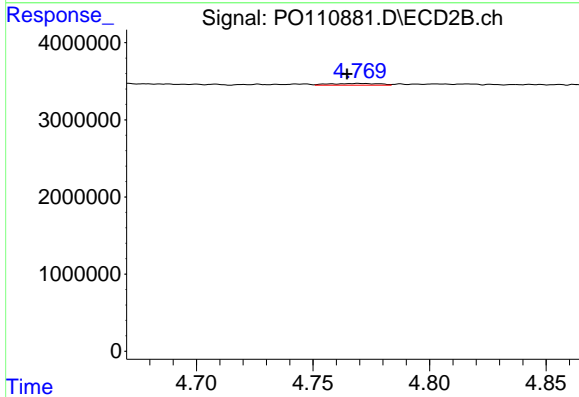
R.T.: 5.556 min
 Delta R.T.: -0.009 min
 Response: 188388
 Conc: 1.30 ng/ml



#21 AR-1248-1

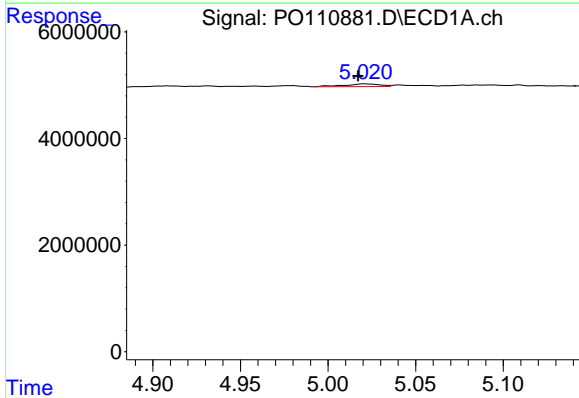
R.T.: 4.782 min
 Delta R.T.: 0.003 min
 Response: 446636
 Conc: 2.10 ng/ml

Instrument :
 ECD_O
 ClientSampleId :
 PB167790BL



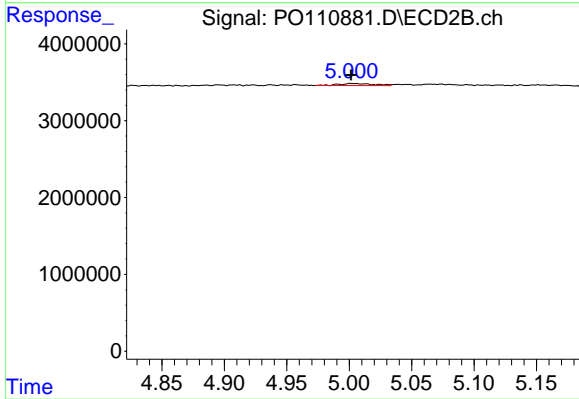
#21 AR-1248-1

R.T.: 4.770 min
 Delta R.T.: 0.005 min
 Response: 338946
 Conc: 2.94 ng/ml



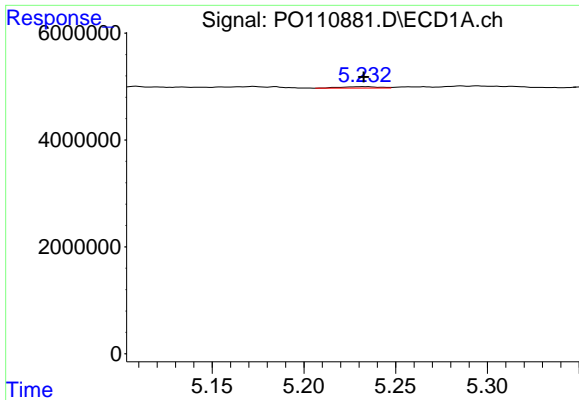
#22 AR-1248-2

R.T.: 5.021 min
 Delta R.T.: 0.004 min
 Response: 717697
 Conc: 2.43 ng/ml



#22 AR-1248-2

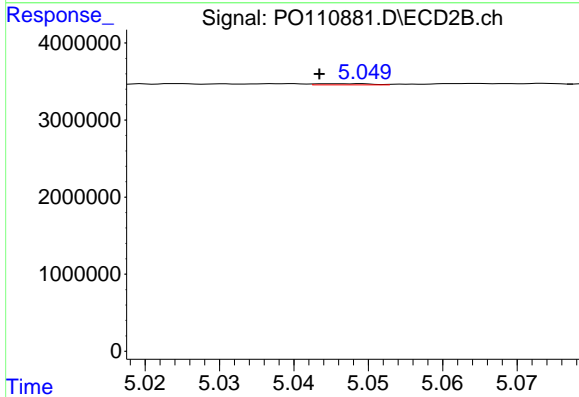
R.T.: 5.001 min
 Delta R.T.: 0.000 min
 Response: 537633
 Conc: 3.30 ng/ml



#23 AR-1248-3

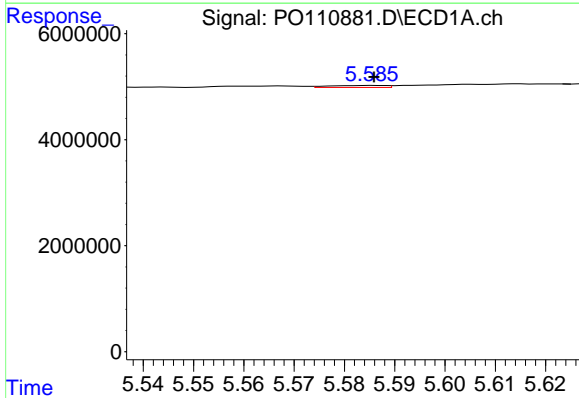
R.T.: 5.233 min
 Delta R.T.: 0.000 min
 Response: 406459
 Conc: 1.10 ng/ml

Instrument :
 ECD_O
 ClientSampleId :
 PB167790BL



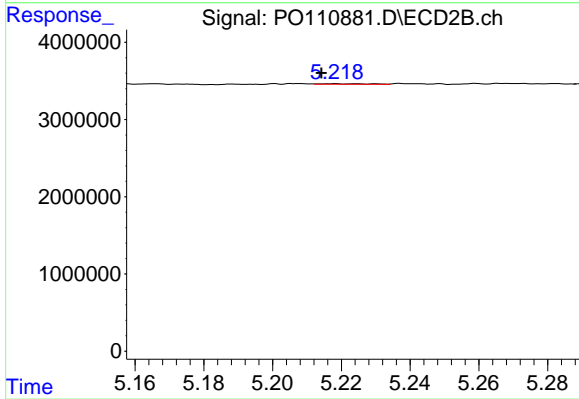
#23 AR-1248-3

R.T.: 5.047 min
 Delta R.T.: 0.004 min
 Response: 80986
 Conc: 0.46 ng/ml



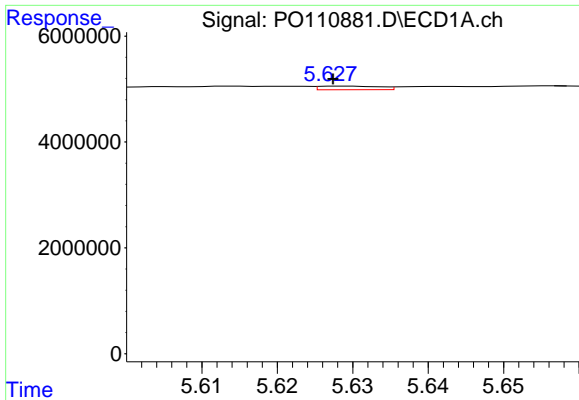
#24 AR-1248-4

R.T.: 5.586 min
 Delta R.T.: 0.000 min
 Response: 292873
 Conc: 0.56 ng/ml



#24 AR-1248-4

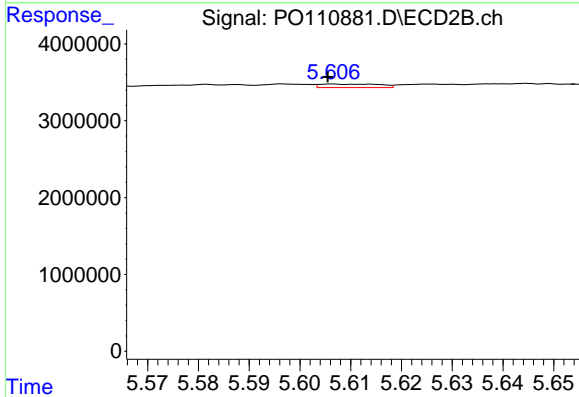
R.T.: 5.218 min
 Delta R.T.: 0.004 min
 Response: 73235
 Conc: 0.36 ng/ml



#25 AR-1248-5

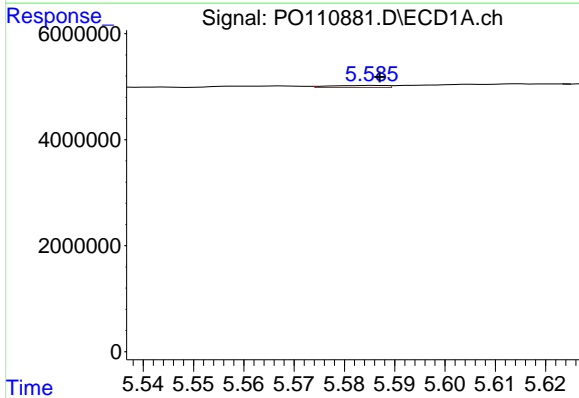
R.T.: 5.629 min
 Delta R.T.: 0.001 min
 Response: 381606
 Conc: 1.03 ng/ml

Instrument :
 ECD_O
 ClientSampleId :
 PB167790BL



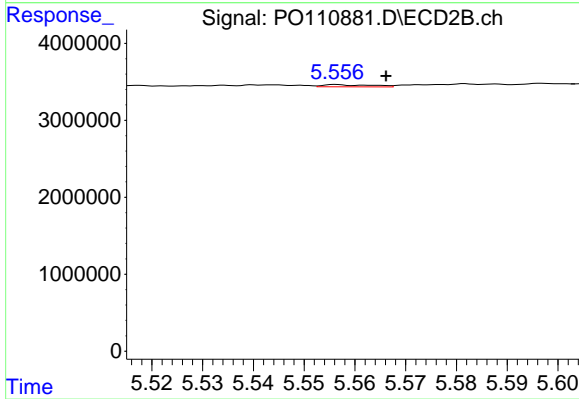
#25 AR-1248-5

R.T.: 5.606 min
 Delta R.T.: 0.000 min
 Response: 378446
 Conc: 1.92 ng/ml



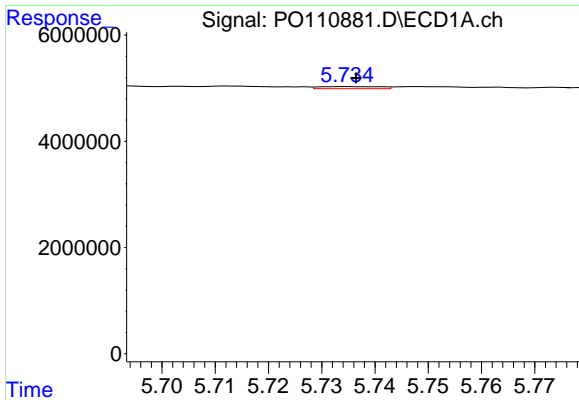
#26 AR-1254-1

R.T.: 5.586 min
 Delta R.T.: -0.001 min
 Response: 292873
 Conc: 0.52 ng/ml



#26 AR-1254-1

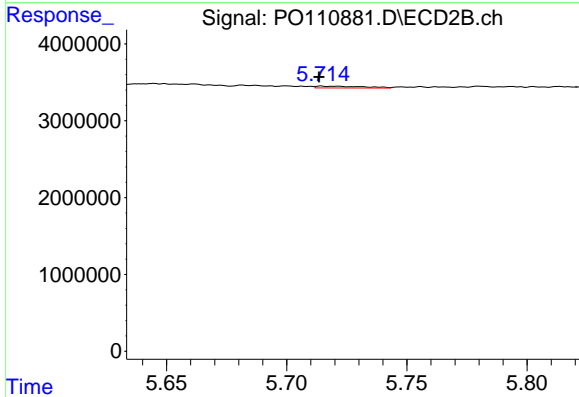
R.T.: 5.556 min
 Delta R.T.: -0.010 min
 Response: 188388
 Conc: 0.62 ng/ml



#27 AR-1254-2

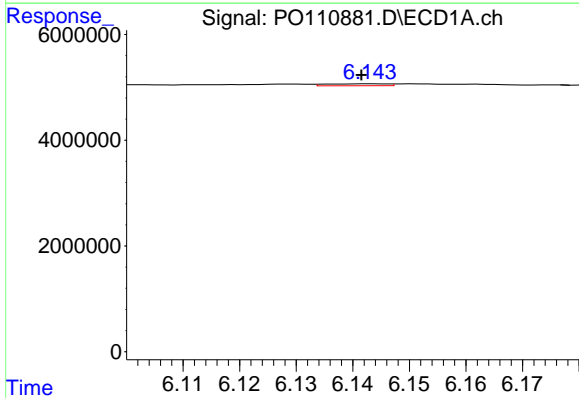
R.T.: 5.735 min
 Delta R.T.: -0.001 min
 Response: 314226
 Conc: 0.65 ng/ml

Instrument :
 ECD_O
 ClientSampleId :
 PB167790BL



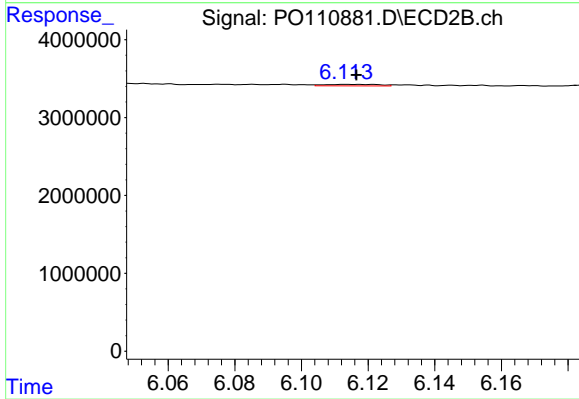
#27 AR-1254-2

R.T.: 5.714 min
 Delta R.T.: 0.000 min
 Response: 333023
 Conc: 1.26 ng/ml



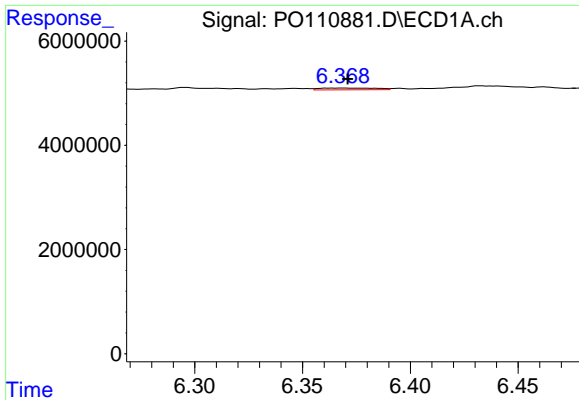
#28 AR-1254-3

R.T.: 6.143 min
 Delta R.T.: 0.002 min
 Response: 281718
 Conc: 0.36 ng/ml



#28 AR-1254-3

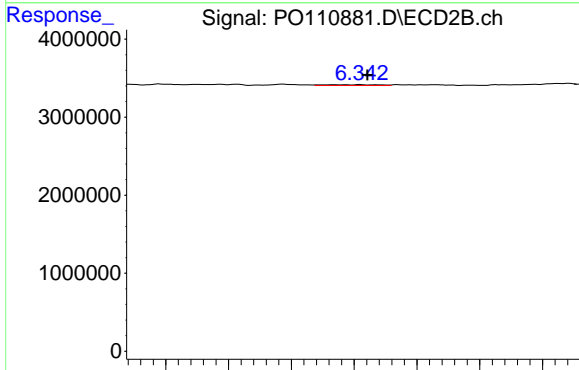
R.T.: 6.114 min
 Delta R.T.: -0.003 min
 Response: 215705
 Conc: 0.53 ng/ml



#29 AR-1254-4

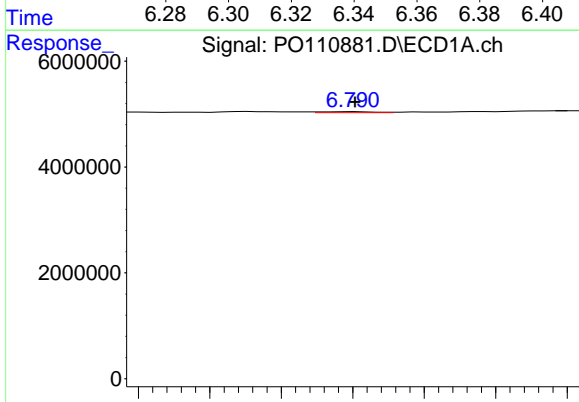
R.T.: 6.369 min
 Delta R.T.: -0.002 min
 Response: 610188
 Conc: 1.25 ng/ml

Instrument :
 ECD_O
 ClientSampleId :
 PB167790BL



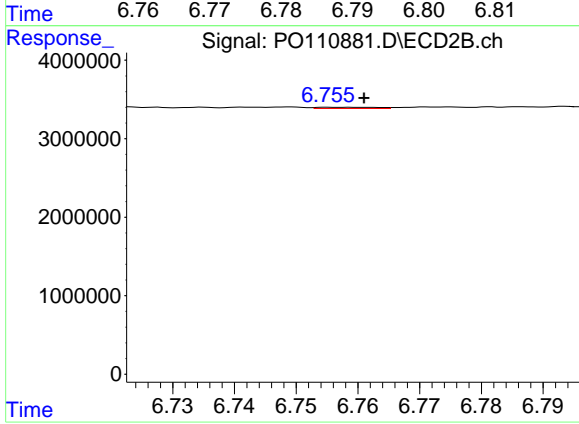
#29 AR-1254-4

R.T.: 6.334 min
 Delta R.T.: -0.010 min
 Response: 124282
 Conc: 0.54 ng/ml



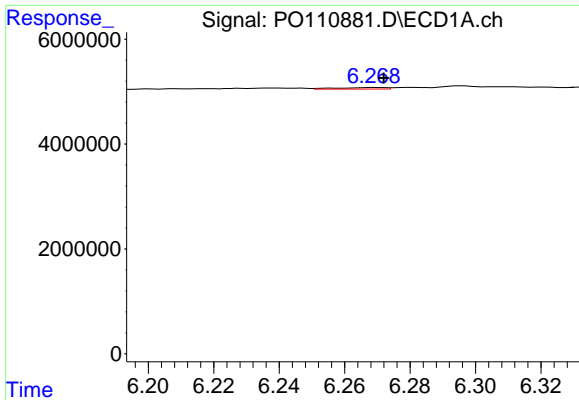
#30 AR-1254-5

R.T.: 6.790 min
 Delta R.T.: 0.000 min
 Response: 99410
 Conc: 0.14 ng/ml



#30 AR-1254-5

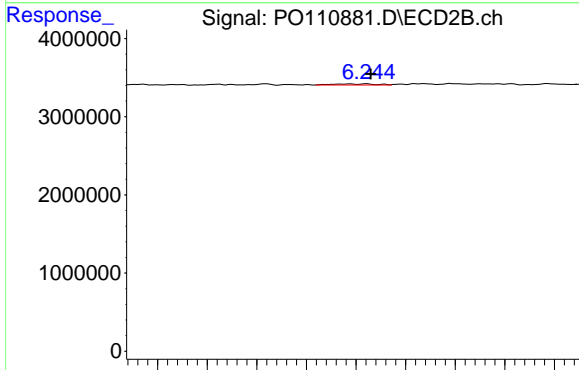
R.T.: 6.756 min
 Delta R.T.: -0.005 min
 Response: 101225
 Conc: 0.30 ng/ml



#31 AR-1260-1

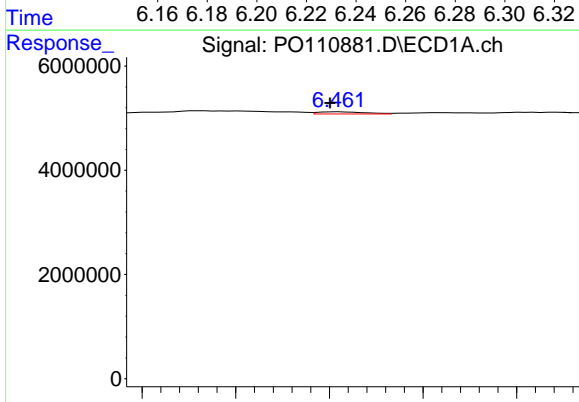
R.T.: 6.269 min
 Delta R.T.: -0.003 min
 Response: 317651
 Conc: 0.67 ng/ml

Instrument :
 ECD_O
 ClientSampleId :
 PB167790BL



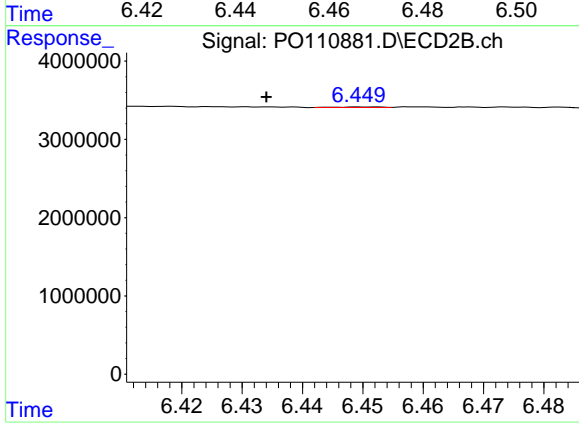
#31 AR-1260-1

R.T.: 6.244 min
 Delta R.T.: -0.002 min
 Response: 173928
 Conc: 0.71 ng/ml



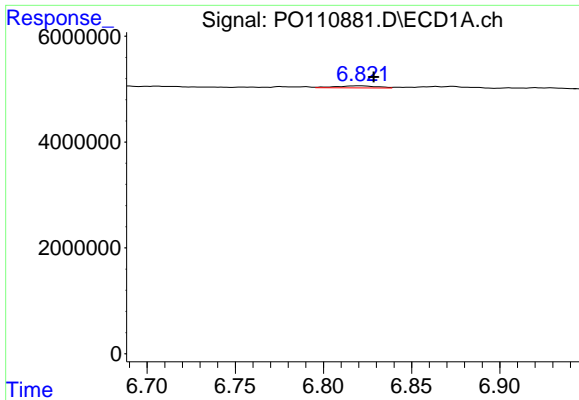
#32 AR-1260-2

R.T.: 6.462 min
 Delta R.T.: 0.002 min
 Response: 289534
 Conc: 0.49 ng/ml



#32 AR-1260-2

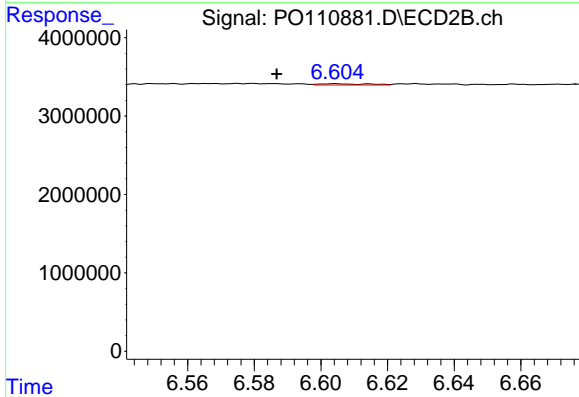
R.T.: 6.451 min
 Delta R.T.: 0.017 min
 Response: 45381
 Conc: 0.16 ng/ml



#33 AR-1260-3

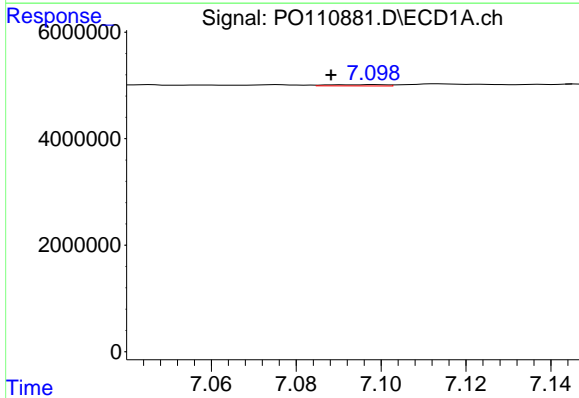
R.T.: 6.821 min
 Delta R.T.: -0.008 min
 Response: 640652
 Conc: 1.30 ng/ml

Instrument :
 ECD_O
 ClientSampleId :
 PB167790BL



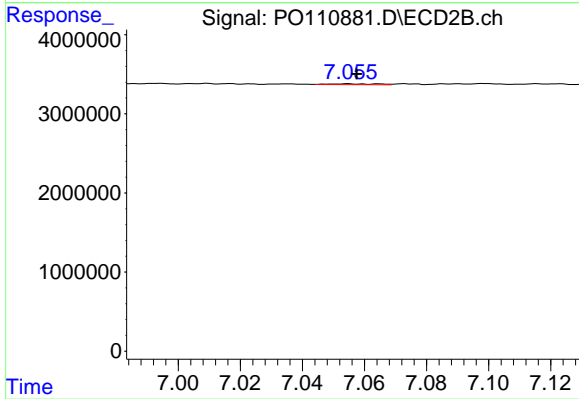
#33 AR-1260-3

R.T.: 6.604 min
 Delta R.T.: 0.018 min
 Response: 162551
 Conc: 0.60 ng/ml



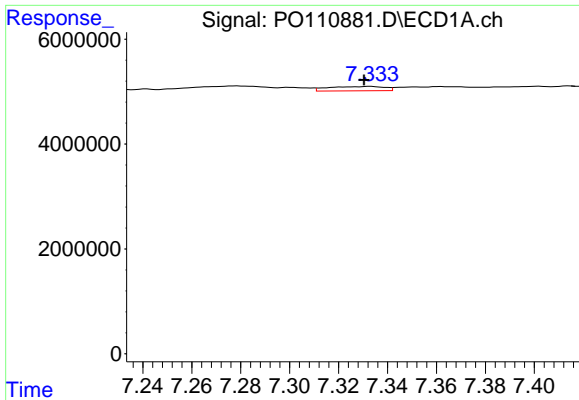
#34 AR-1260-4

R.T.: 7.098 min
 Delta R.T.: 0.010 min
 Response: 235333
 Conc: 0.55 ng/ml



#34 AR-1260-4

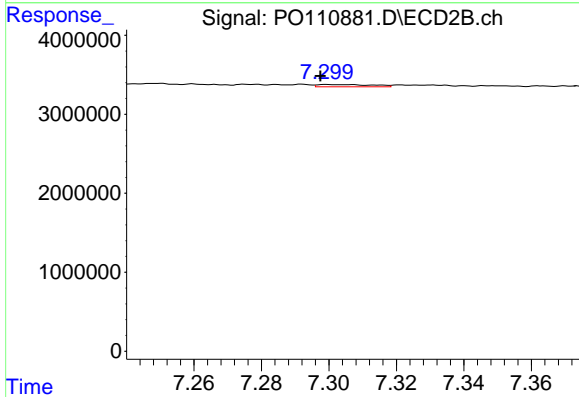
R.T.: 7.055 min
 Delta R.T.: -0.003 min
 Response: 121974
 Conc: 0.61 ng/ml



#35 AR-1260-5

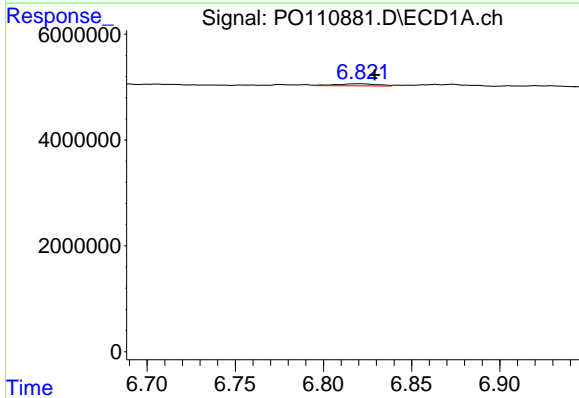
R.T.: 7.333 min
 Delta R.T.: 0.002 min
 Response: 1315215
 Conc: 1.26 ng/ml

Instrument :
 ECD_O
 ClientSampleId :
 PB167790BL



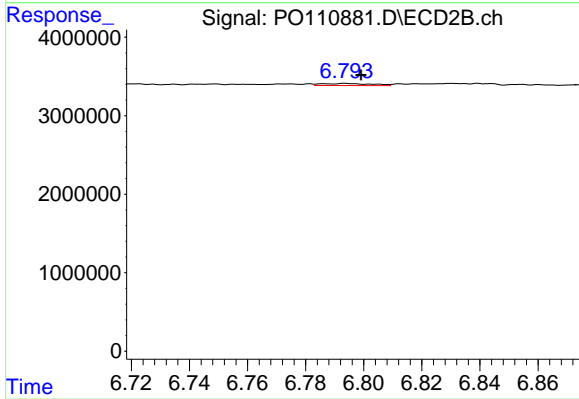
#35 AR-1260-5

R.T.: 7.300 min
 Delta R.T.: 0.002 min
 Response: 333912
 Conc: 0.73 ng/ml



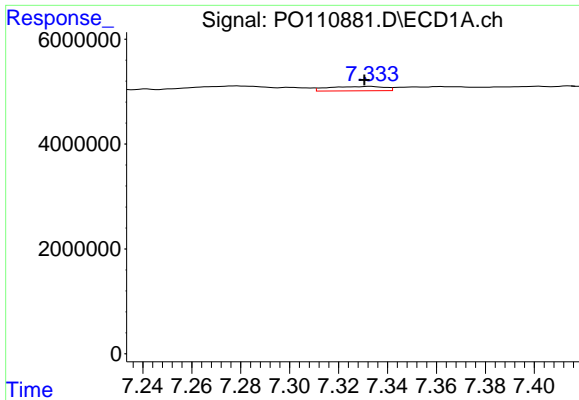
#36 AR-1262-1

R.T.: 6.821 min
 Delta R.T.: -0.008 min
 Response: 640652
 Conc: 0.91 ng/ml



#36 AR-1262-1

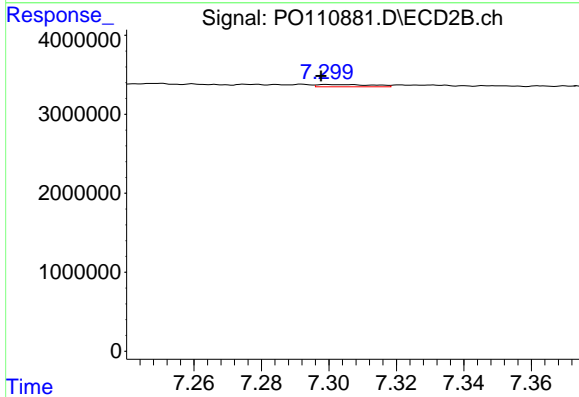
R.T.: 6.794 min
 Delta R.T.: -0.005 min
 Response: 330455
 Conc: 1.00 ng/ml



#37 AR-1262-2

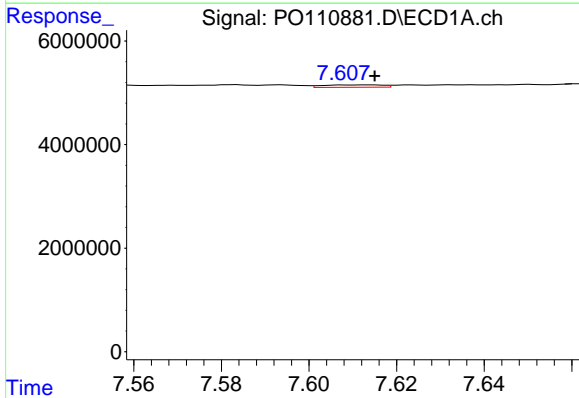
R.T.: 7.333 min
 Delta R.T.: 0.002 min
 Response: 1315215
 Conc: 1.09 ng/ml

Instrument :
 ECD_O
 ClientSampleId :
 PB167790BL



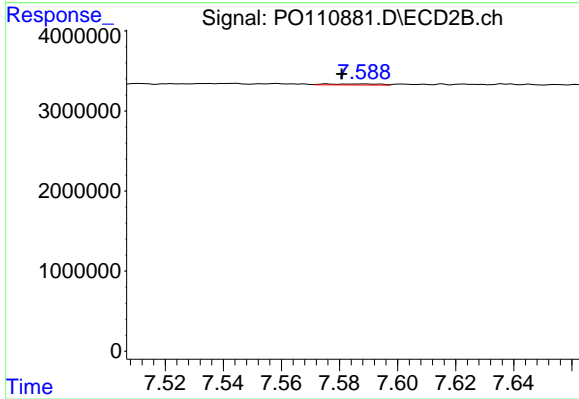
#37 AR-1262-2

R.T.: 7.300 min
 Delta R.T.: 0.002 min
 Response: 333912
 Conc: 0.66 ng/ml



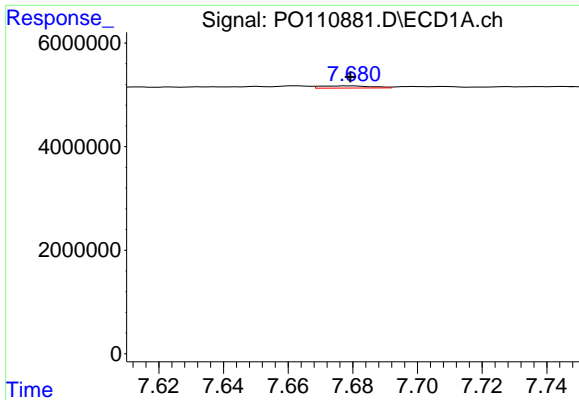
#38 AR-1262-3

R.T.: 7.614 min
 Delta R.T.: 0.000 min
 Response: 428009
 Conc: 0.84 ng/ml



#38 AR-1262-3

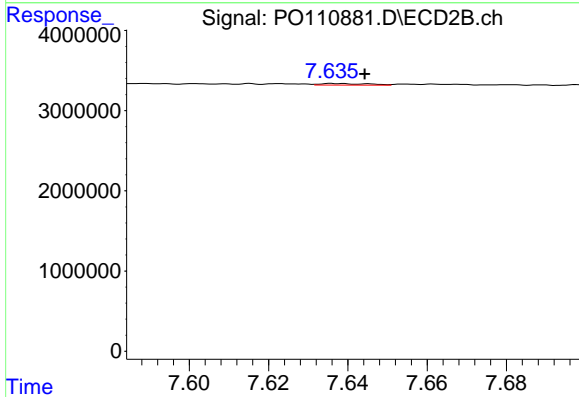
R.T.: 7.576 min
 Delta R.T.: -0.005 min
 Response: 171559
 Conc: 0.89 ng/ml



#39 AR-1262-4

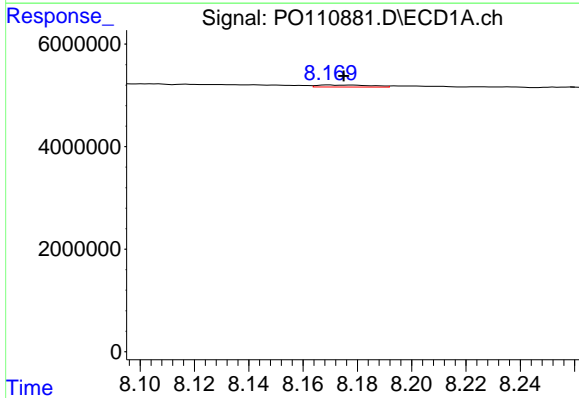
R.T.: 7.679 min
 Delta R.T.: 0.000 min
 Response: 477523
 Conc: 0.53 ng/ml

Instrument :
 ECD_O
 ClientSampleId :
 PB167790BL



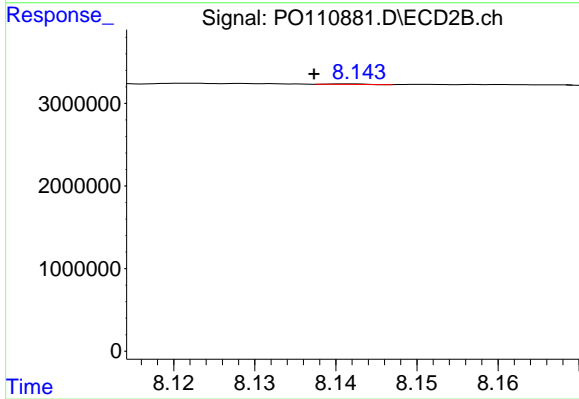
#39 AR-1262-4

R.T.: 7.637 min
 Delta R.T.: -0.007 min
 Response: 159975
 Conc: 0.46 ng/ml



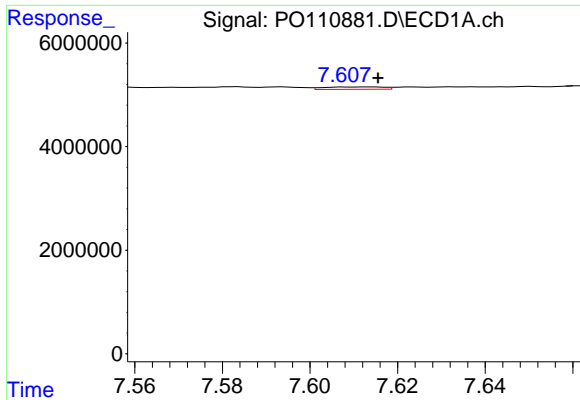
#40 AR-1262-5

R.T.: 8.169 min
 Delta R.T.: -0.006 min
 Response: 540407
 Conc: 1.34 ng/ml



#40 AR-1262-5

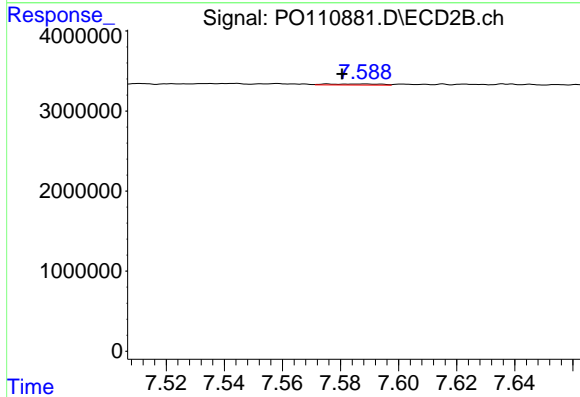
R.T.: 8.141 min
 Delta R.T.: 0.004 min
 Response: 19864
 Conc: 0.16 ng/ml



#41 AR-1268-1

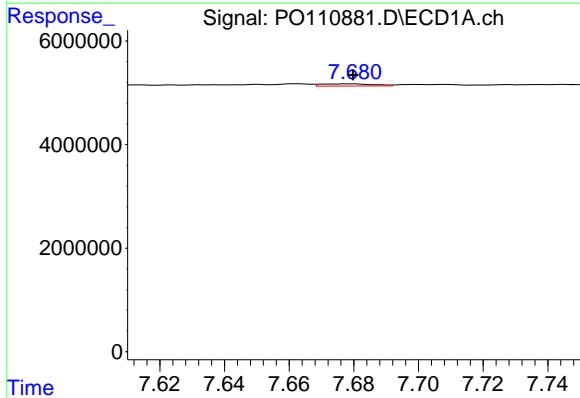
R.T.: 7.614 min
 Delta R.T.: -0.002 min
 Response: 428009
 Conc: 0.30 ng/ml

Instrument :
 ECD_O
 ClientSampleId :
 PB167790BL



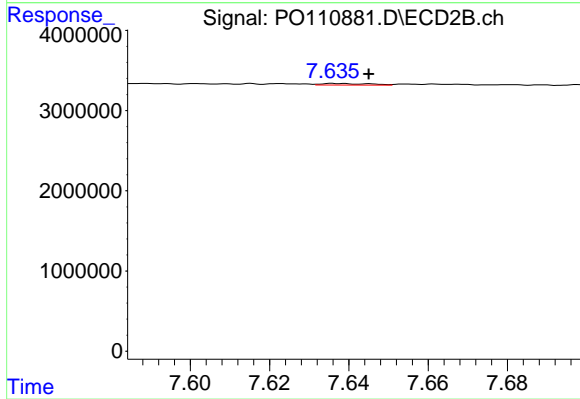
#41 AR-1268-1

R.T.: 7.576 min
 Delta R.T.: -0.005 min
 Response: 171559
 Conc: 0.31 ng/ml



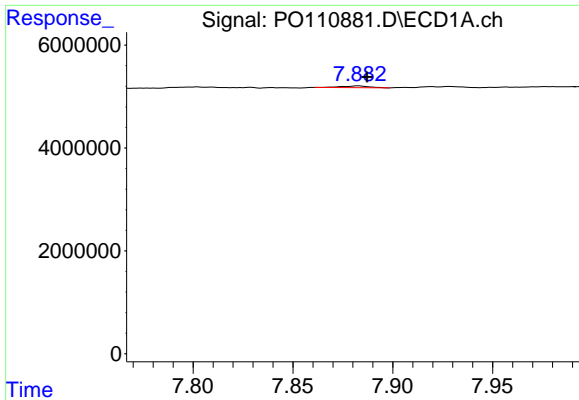
#42 AR-1268-2

R.T.: 7.679 min
 Delta R.T.: 0.000 min
 Response: 477523
 Conc: 0.37 ng/ml



#42 AR-1268-2

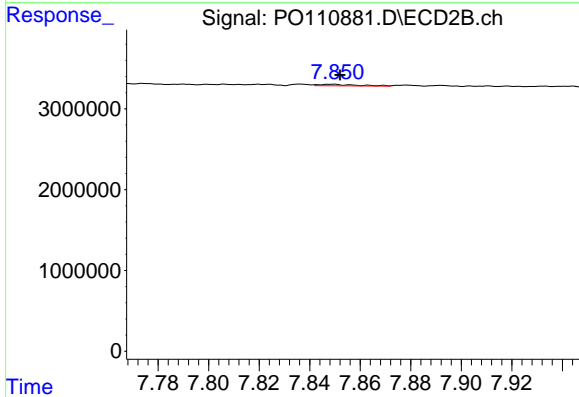
R.T.: 7.637 min
 Delta R.T.: -0.008 min
 Response: 159975
 Conc: 0.32 ng/ml



#43 AR-1268-3

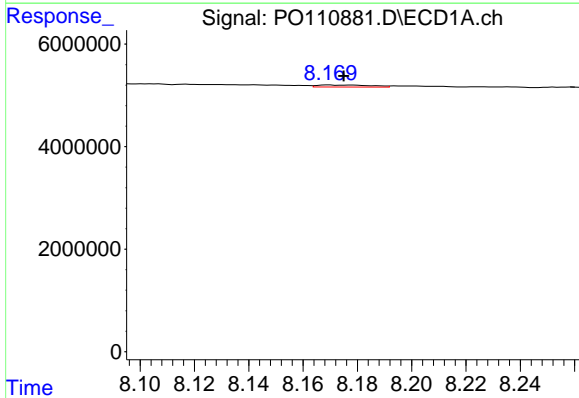
R.T.: 7.883 min
 Delta R.T.: -0.004 min
 Response: 295153
 Conc: 0.28 ng/ml

Instrument :
 ECD_O
 ClientSampleId :
 PB167790BL



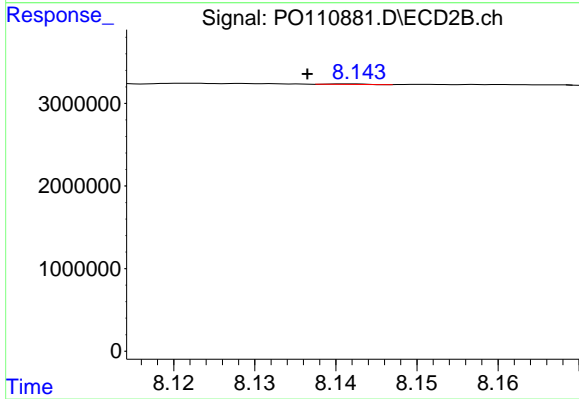
#43 AR-1268-3

R.T.: 7.849 min
 Delta R.T.: -0.003 min
 Response: 201951
 Conc: 0.54 ng/ml



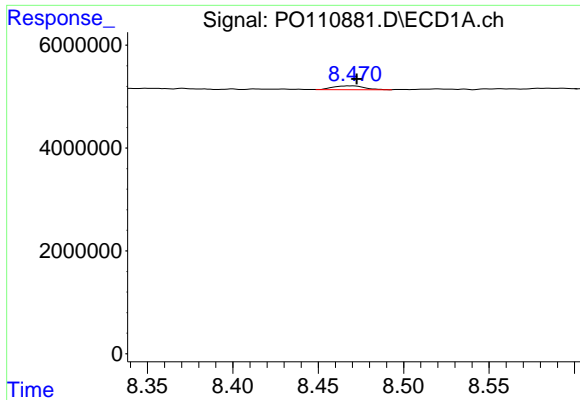
#44 AR-1268-4

R.T.: 8.169 min
 Delta R.T.: -0.006 min
 Response: 540407
 Conc: 1.22 ng/ml



#44 AR-1268-4

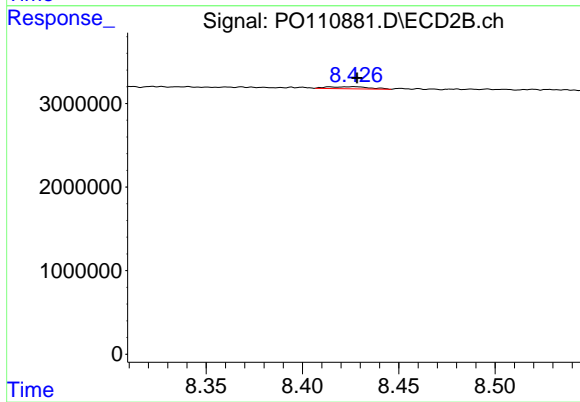
R.T.: 8.141 min
 Delta R.T.: 0.005 min
 Response: 19864
 Conc: 0.14 ng/ml



#45 AR-1268-5

R.T.: 8.470 min
 Delta R.T.: -0.003 min
 Response: 944482
 Conc: 0.29 ng/ml

Instrument :
 ECD_O
 ClientSampleId :
 PB167790BL



#45 AR-1268-5

R.T.: 8.427 min
 Delta R.T.: -0.001 min
 Response: 368116
 Conc: 0.47 ng/ml