

Data Path : Z:\pestpcbsrv\HPCHEM1\ECD_0\Data\P0050319\
 Data File : P0055820.D
 Signal(s) : Signal #1: ECD1A.CH Signal #2: ECD2B.CH
 Acq On : 03 May 2019 14:15
 Operator : SM/SJ
 Sample : AR1254ICC050
 Misc :
 ALS Vial : 16 Sample Multiplier: 1

Instrument :
 ECD_0
 ClientSampleId :
 AR1254ICC050

Integration File signal 1: autoint1.e
 Integration File signal 2: autoint2.e
 Quant Time: May 03 14:36:25 2019
 Quant Method : Z:\pestpcbsrv\HPCHEM1\ECD_0\methods\P0050319.M
 Quant Title : GC EXTRACTABLES
 QLast Update : Fri May 03 14:35:30 2019
 Response via : Initial Calibration
 Integrator: ChemStation 6890 Scale Mode: Small noise peaks clipped

Volume Inj. : 2 µl
 Signal #1 Phase : ZB-MR1 Signal #2 Phase: ZB-MR2
 Signal #1 Info : 30Mx0.32mmx 0.50µ Signal #2 Info : 30M x 0.32mm x 0.25µm

Compound	RT#1	RT#2	Resp#1	Resp#2	ng/ml	ng/ml

System Monitoring Compounds						
1) SA Tetrachlo...	4.278	3.592	192036	180977	5.683	5.741
2) SA Decachlor...	9.878	8.543	242242	176145	5.891	5.634
Target Compounds						
26) L6 AR-1254-1	6.287	5.457	147337	167003	74.687	65.039
27) L6 AR-1254-2	6.504	5.603	222593	153405	71.043	65.679
28) L6 AR-1254-3	6.870	6.004	237698	245466	69.558	64.532
29) L6 AR-1254-4	7.154	6.231	172145	153663	66.557	58.352
30) L6 AR-1254-5	7.571	6.645	168958	221492	60.671	63.465

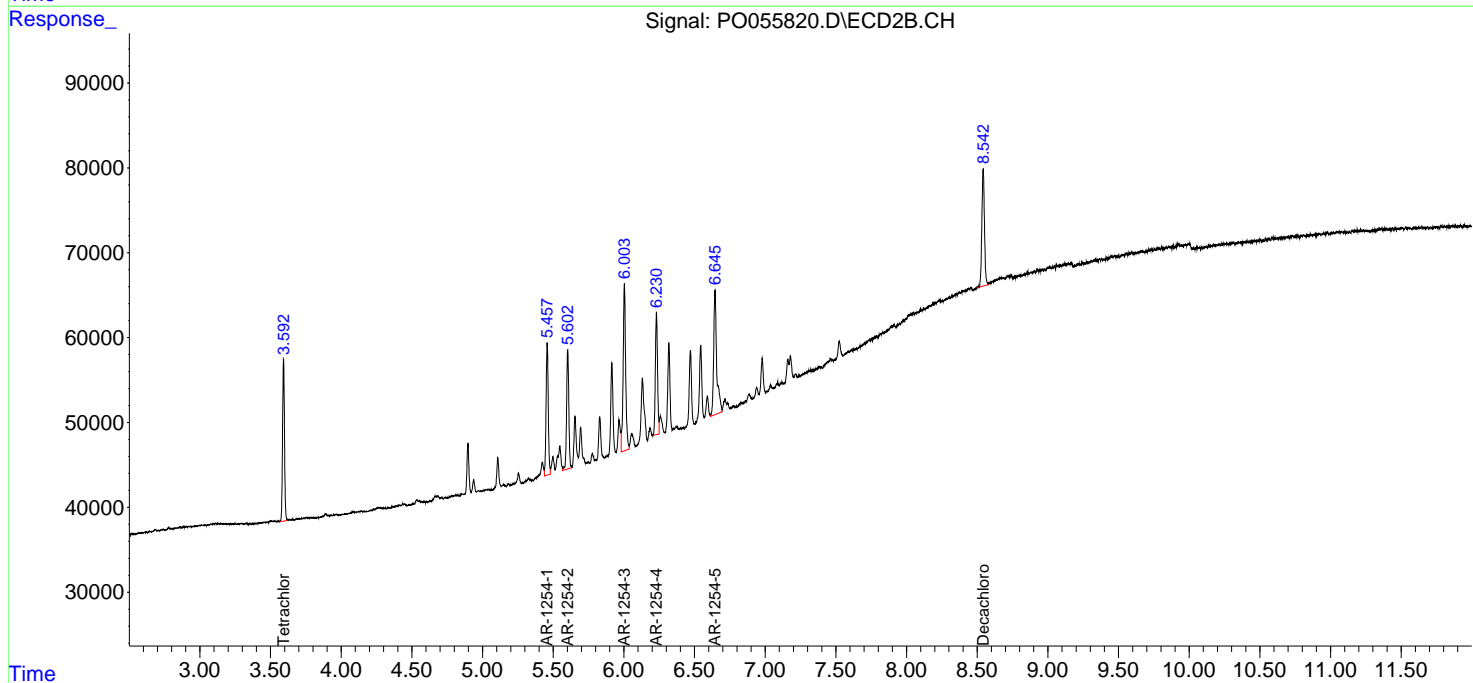
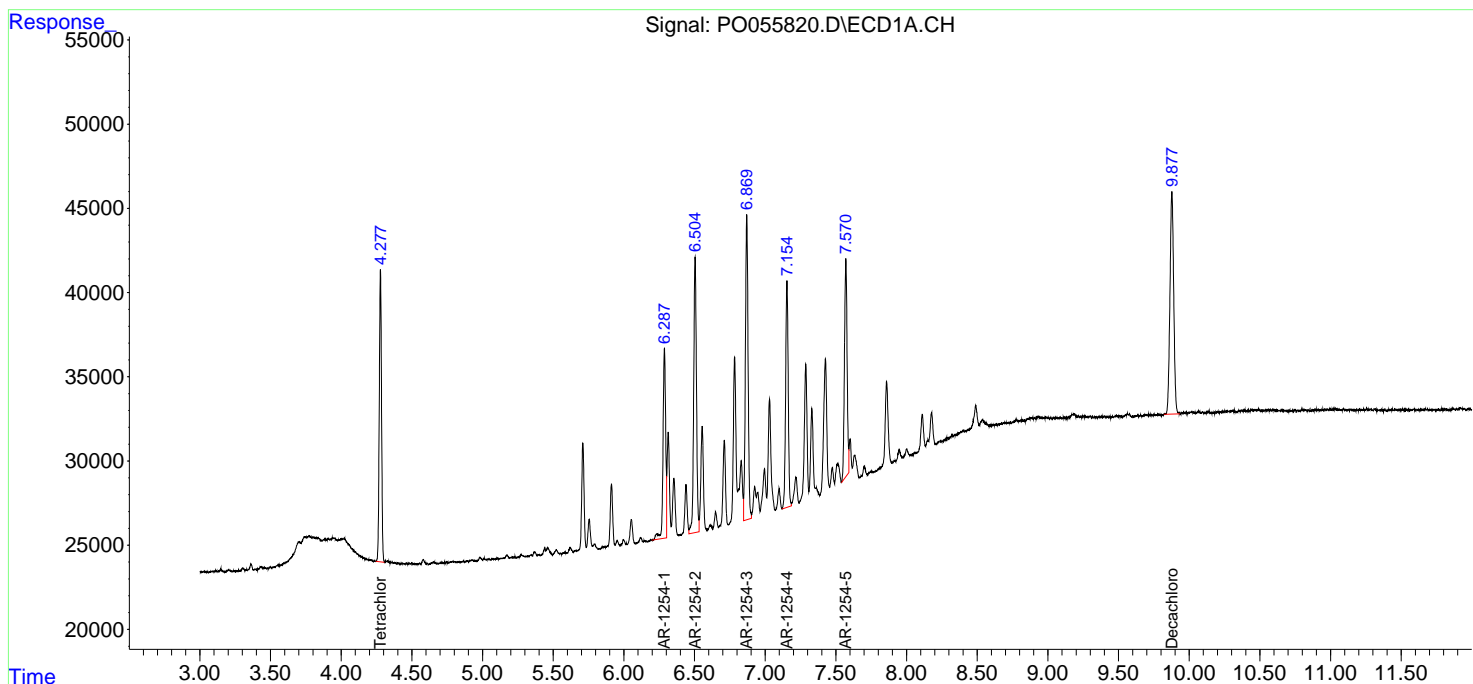
(f)=RT Delta > 1/2 Window (#)=Amounts differ by > 25% (m)=manual int.

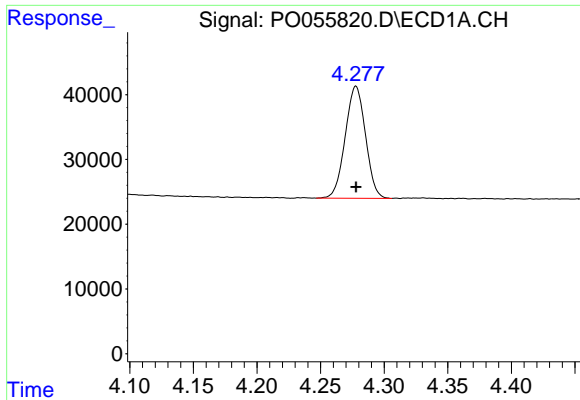
Data Path : Z:\pestpcbsrv\HPCHEM1\ECD_0\Data\P0050319\
 Data File : P0055820.D
 Signal(s) : Signal #1: ECD1A.CH Signal #2: ECD2B.CH
 Acq On : 03 May 2019 14:15
 Operator : SM/SJ
 Sample : AR1254ICC050
 Misc :
 ALS Vial : 16 Sample Multiplier: 1

Instrument :
 ECD_O
 ClientSampled :
 AR1254ICC050

Integration File signal 1: autoint1.e
 Integration File signal 2: autoint2.e
 Quant Time: May 03 14:36:25 2019
 Quant Method : Z:\pestpcbsrv\HPCHEM1\ECD_0\methods\P0050319.M
 Quant Title : GC EXTRACTABLES
 QLast Update : Fri May 03 14:35:30 2019
 Response via : Initial Calibration
 Integrator: ChemStation 6890 Scale Mode: Small noise peaks clipped

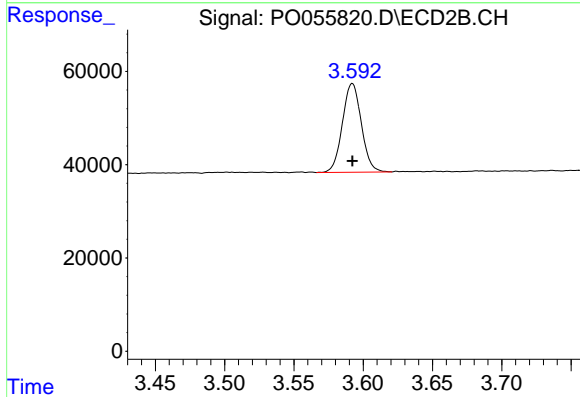
Volume Inj. : 2 µl
 Signal #1 Phase : ZB-MR1 Signal #2 Phase: ZB-MR2
 Signal #1 Info : 30Mx0.32mmx 0.50µ Signal #2 Info : 30M x 0.32mm x 0.25µm



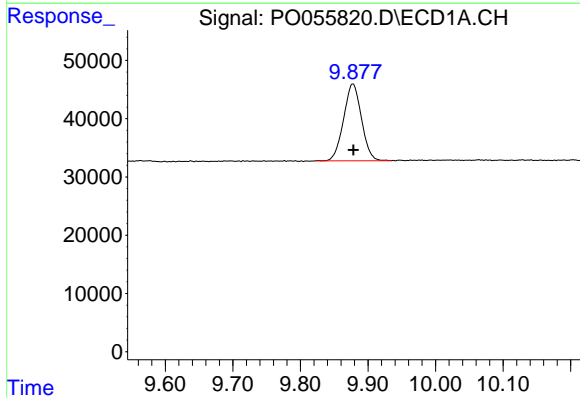


#1 Tetrachloro-m-xylene
 R.T.: 4.278 min
 Delta R.T.: 0.000 min
 Response: 192036
 Conc: 5.68 ng/ml

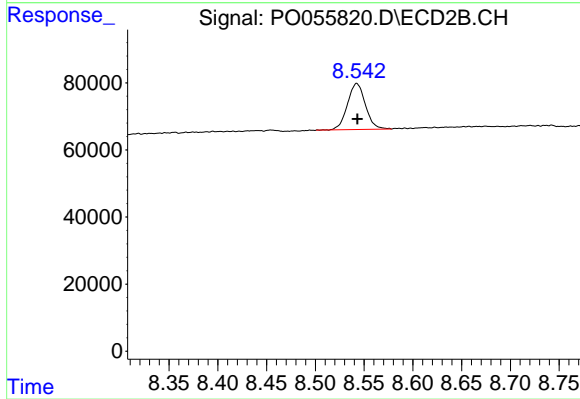
Instrument :
 ECD_O
 ClientSampleId :
 AR1254ICC050



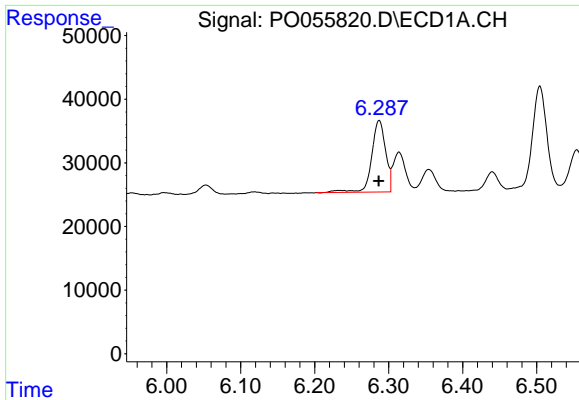
#1 Tetrachloro-m-xylene
 R.T.: 3.592 min
 Delta R.T.: 0.000 min
 Response: 180977
 Conc: 5.74 ng/ml



#2 Decachlorobiphenyl
 R.T.: 9.878 min
 Delta R.T.: 0.000 min
 Response: 242242
 Conc: 5.89 ng/ml



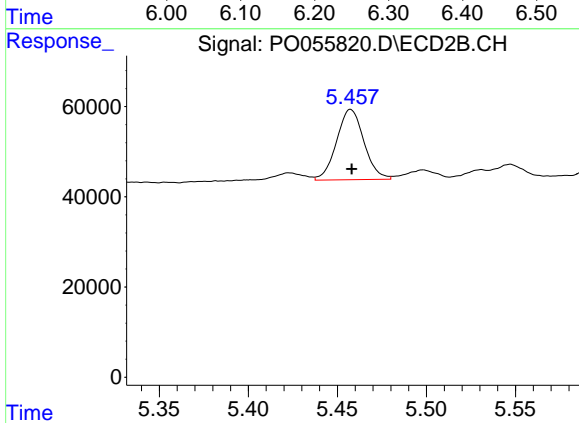
#2 Decachlorobiphenyl
 R.T.: 8.543 min
 Delta R.T.: 0.000 min
 Response: 176145
 Conc: 5.63 ng/ml



#26 AR-1254-1

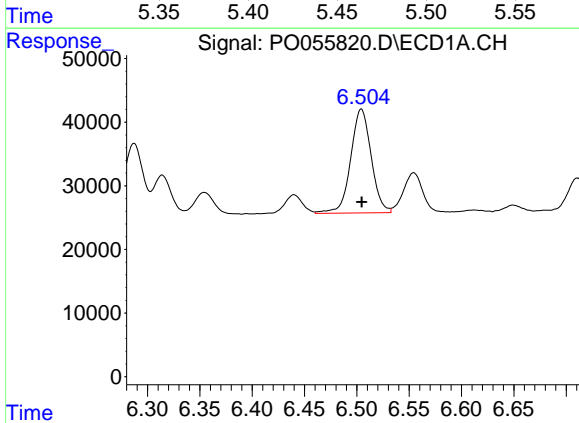
R.T.: 6.287 min
 Delta R.T.: 0.000 min
 Response: 147337
 Conc: 74.69 ng/ml

Instrument :
 ECD_O
ClientSampled :
 AR1254ICC050



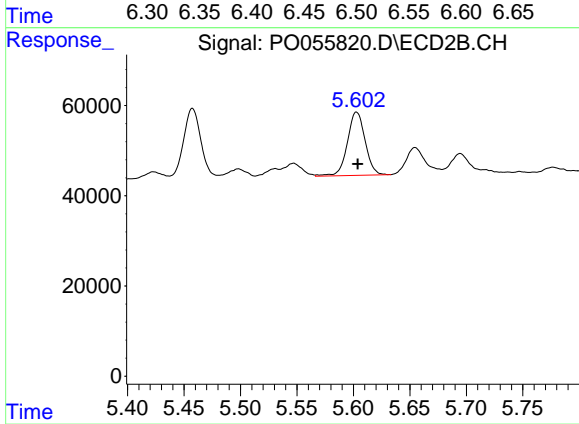
#26 AR-1254-1

R.T.: 5.457 min
 Delta R.T.: 0.000 min
 Response: 167003
 Conc: 65.04 ng/ml



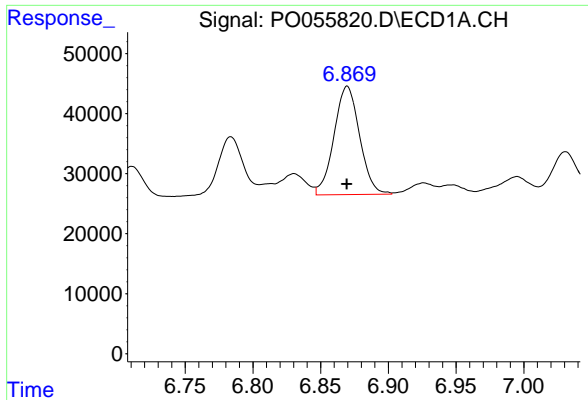
#27 AR-1254-2

R.T.: 6.504 min
 Delta R.T.: 0.000 min
 Response: 222593
 Conc: 71.04 ng/ml



#27 AR-1254-2

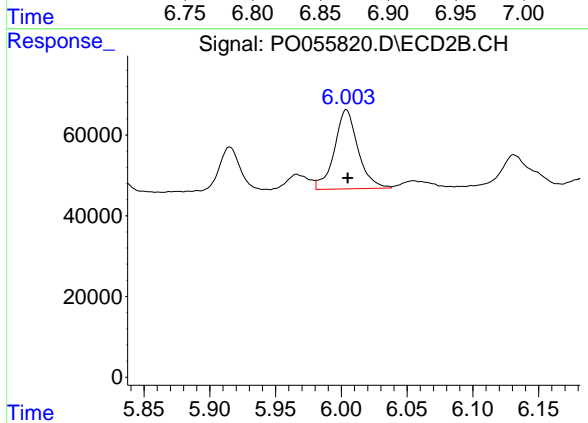
R.T.: 5.603 min
 Delta R.T.: -0.001 min
 Response: 153405
 Conc: 65.68 ng/ml



#28 AR-1254-3

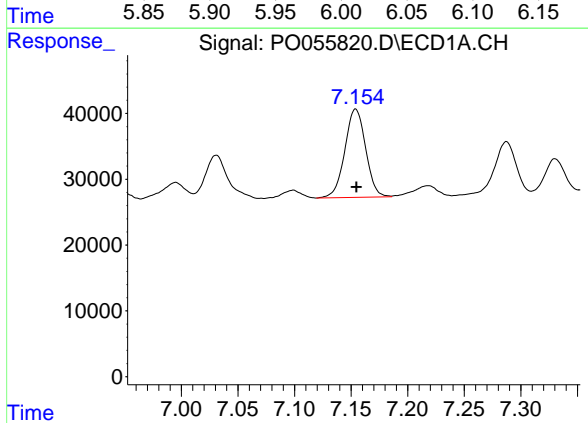
R.T.: 6.870 min
 Delta R.T.: 0.000 min
 Response: 237698
 Conc: 69.56 ng/ml

Instrument :
 ECD_O
 ClientSampleId :
 AR1254ICC050



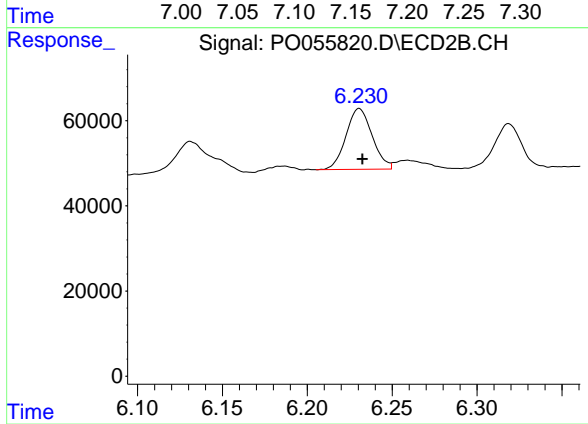
#28 AR-1254-3

R.T.: 6.004 min
 Delta R.T.: -0.001 min
 Response: 245466
 Conc: 64.53 ng/ml



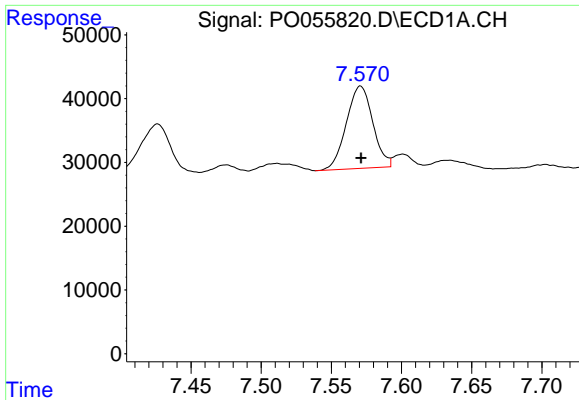
#29 AR-1254-4

R.T.: 7.154 min
 Delta R.T.: 0.000 min
 Response: 172145
 Conc: 66.56 ng/ml



#29 AR-1254-4

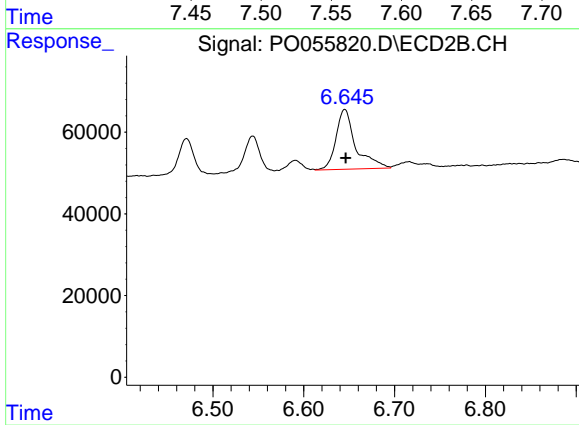
R.T.: 6.231 min
 Delta R.T.: -0.002 min
 Response: 153663
 Conc: 58.35 ng/ml



#30 AR-1254-5

R.T.: 7.571 min
 Delta R.T.: 0.000 min
 Response: 168958
 Conc: 60.67 ng/ml

Instrument :
 ECD_O
ClientSampled :
 AR1254ICC050



#30 AR-1254-5

R.T.: 6.645 min
 Delta R.T.: 0.000 min
 Response: 221492
 Conc: 63.47 ng/ml