

Data Path : Z:\pestpcbsrv\HPCHEM1\ECD\_0\Data\P0050319\  
 Data File : P0055829.D  
 Signal(s) : Signal #1: ECD1A.CH Signal #2: ECD2B.CH  
 Acq On : 03 May 2019 16:54  
 Operator : SM/SJ  
 Sample : K2564-03MS  
 Misc :  
 ALS Vial : 6 Sample Multiplier: 1

Instrument :  
 ECD\_0  
 ClientSampled :  
 C-3\_042419MS

Integration File signal 1: autoint1.e  
 Integration File signal 2: autoint2.e  
 Quant Time: May 03 22:52:46 2019  
 Quant Method : Z:\pestpcbsrv\HPCHEM1\ECD\_0\methods\P0050319.M  
 Quant Title : GC EXTRACTABLES  
 QLast Update : Fri May 03 15:20:04 2019  
 Response via : Initial Calibration  
 Integrator: ChemStation 6890 Scale Mode: Small noise peaks clipped

Volume Inj. : 2 µl  
 Signal #1 Phase : ZB-MR1 Signal #2 Phase: ZB-MR2  
 Signal #1 Info : 30Mx0.32mmx 0.50µ Signal #2 Info : 30M x 0.32mm x 0.25µm

Compound	RT#1	RT#2	Resp#1	Resp#2	ng/ml	ng/ml
System Monitoring Compounds						
1) SA Tetrachlo...	4.279	3.592	1071720	1051425	35.813	37.227
2) SA Decachlor...	9.879	8.544	1046194	754660	27.960	27.906
Target Compounds						
3) L1 AR-1016-1	5.441	4.664	541074	511138	380.738	380.336
4) L1 AR-1016-2	5.463	4.683	731402	659985	369.605	361.448
5) L1 AR-1016-3	5.524	4.858	497848	550622	388.416	549.452 #
6) L1 AR-1016-4	5.622	4.898	444591	368391	425.354	452.772
7) L1 AR-1016-5	5.914	5.110	473889	631799	420.666	573.915 #
8) L2 AR-1221-1	4.482	3.803	64392	43113	148.114	117.429
9) L2 AR-1221-2	4.576	3.888	75661	57942	225.627	208.912
10) L2 AR-1221-3	4.651	3.963	234490	200170	233.187	225.290
11) L3 AR-1232-1	4.651	3.963	234490	200170	273.011	270.472
12) L3 AR-1232-2	5.175	4.683	381288	659985	785.973	753.022
13) L3 AR-1232-3	5.463	4.858	731402	550622	755.982	1147.919 #
14) L3 AR-1232-4	5.622	4.940	444591	395859	874.251	931.951
15) L3 AR-1232-5	5.712	5.110	327964	631799	755.375	1303.737 #
16) L4 AR-1242-1	5.441	4.664	541074	511138	446.876	456.120
17) L4 AR-1242-2	5.463	4.683	731402	659985	433.194	433.788
18) L4 AR-1242-3	5.524	4.858	497848	550622	454.431	635.811 #
19) L4 AR-1242-4	5.622	4.940	444591	395859	494.088	472.553
20) L4 AR-1242-5	6.353	5.459	200418	331581	183.203	276.227 #
21) L5 AR-1248-1	5.441	4.664	541074	511138	597.793	609.565
22) L5 AR-1248-2	5.712	4.898	327964	368391	245.921	335.278 #
23) L5 AR-1248-3	5.914	4.940	473889	395859	320.904	348.729
24) L5 AR-1248-4	6.291	5.110	1689807	631799	969.073	449.943 #
25) L5 AR-1248-5	6.353	5.484	200418	872534	119.987	582.577 #
26) L6 AR-1254-1	6.291	5.459	1689807	331581	804.734	123.894 #
27) L6 AR-1254-2	6.506	5.603	656573	359356	197.833	147.115 #
28) L6 AR-1254-3	6.882	6.019	1116861	622521	307.208	156.901 #
29) L6 AR-1254-4	7.154	6.232	358520	110831	131.775	41.337 #
30) L6 AR-1254-5	7.571	6.646	1037338	959163	361.931	265.058 #
31) L7 AR-1260-1	7.033	6.134	950624	695866	440.207	315.845 #
32) L7 AR-1260-2	7.289	6.318	942432	1391773	359.860	455.785 #
33) L7 AR-1260-3	7.645	6.472	566697	583286	283.350	234.061
34) L7 AR-1260-4	7.871	6.941	964130	576756	416.902	279.508 #
35) L7 AR-1260-5	8.179	7.181	1146517	1590350	270.257	316.659
36) L8 AR-1262-1	7.645	6.682	566697	633541	176.770	154.492
37) L8 AR-1262-2	8.179	7.181	1146517	1590350	213.555	254.341
38) L8 AR-1262-3	8.490	7.462	716426	330314	197.425	134.112 #
39) L8 AR-1262-4	8.542	7.526	379870	821538	139.911	200.622 #
40) L8 AR-1262-5	9.182	8.018	255206	262504	141.270	154.039
41) L9 AR-1268-1	8.490	7.462	716426	330314	118.636	47.673 #

Data Path : Z:\pestpcbsrv\HPCHEM1\ECD\_0\Data\P0050319\  
 Data File : P0055829.D  
 Signal(s) : Signal #1: ECD1A.CH Signal #2: ECD2B.CH  
 Acq On : 03 May 2019 16:54  
 Operator : SM/SJ  
 Sample : K2564-03MS  
 Misc :  
 ALS Vial : 6 Sample Multiplier: 1

Instrument :  
 ECD\_0  
 ClientSampleId :  
 C-3\_042419MS

Integration File signal 1: autoint1.e  
 Integration File signal 2: autoint2.e  
 Quant Time: May 03 22:52:46 2019  
 Quant Method : Z:\pestpcbsrv\HPCHEM1\ECD\_0\methods\P0050319.M  
 Quant Title : GC EXTRACTABLES  
 QLast Update : Fri May 03 15:20:04 2019  
 Response via : Initial Calibration  
 Integrator: ChemStation 6890 Scale Mode: Small noise peaks clipped

Volume Inj. : 2 µl  
 Signal #1 Phase : ZB-MR1 Signal #2 Phase: ZB-MR2  
 Signal #1 Info : 30Mx0.32mmx 0.50µ Signal #2 Info : 30M x 0.32mm x 0.25µm

	Compound	RT#1	RT#2	Resp#1	Resp#2	ng/ml	ng/ml
42)	L9 AR-1268-2	8.542	7.526	379870	821538	69.399	144.404 #
43)	L9 AR-1268-3	0.000	7.730	0	59434	N.D.	12.584 #
44)	L9 AR-1268-4	9.182	8.018	255206	262504	130.061	138.766
45)	L9 AR-1268-5	9.567	8.299	85568	74237	6.342	6.096

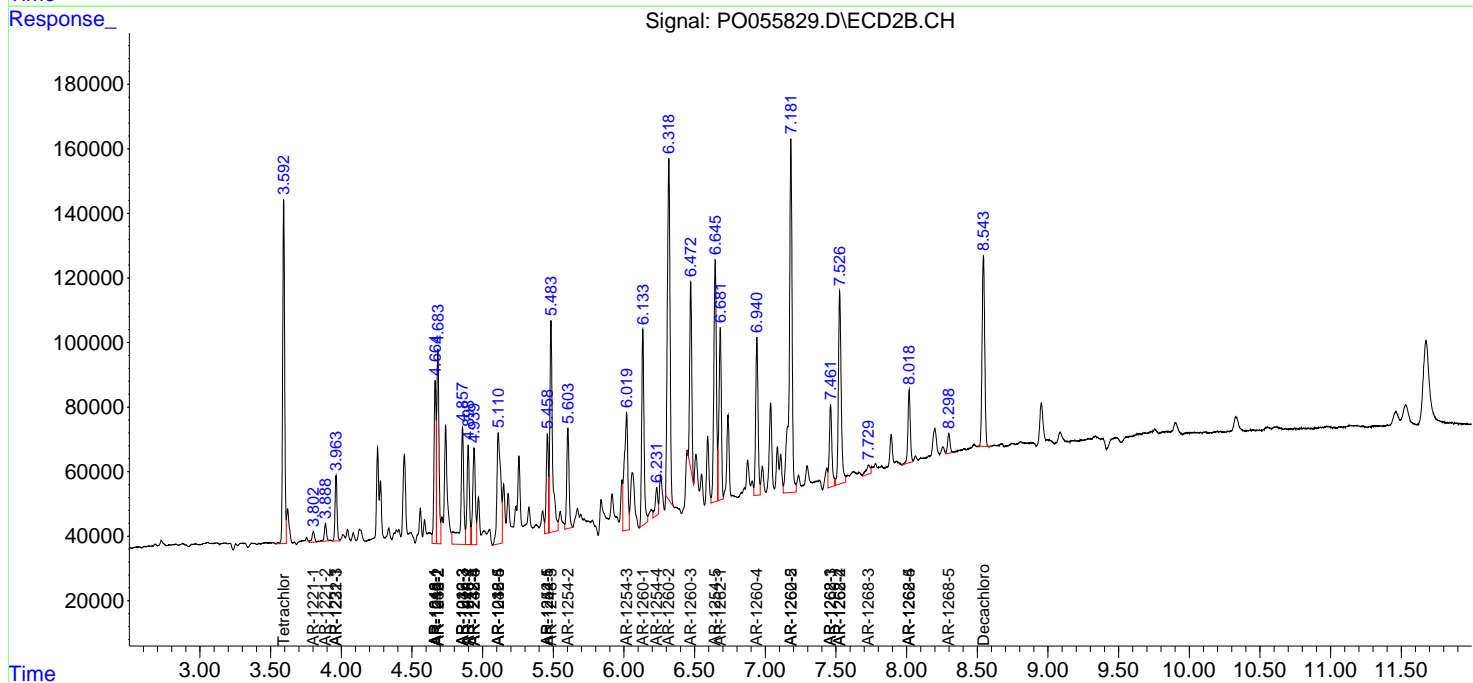
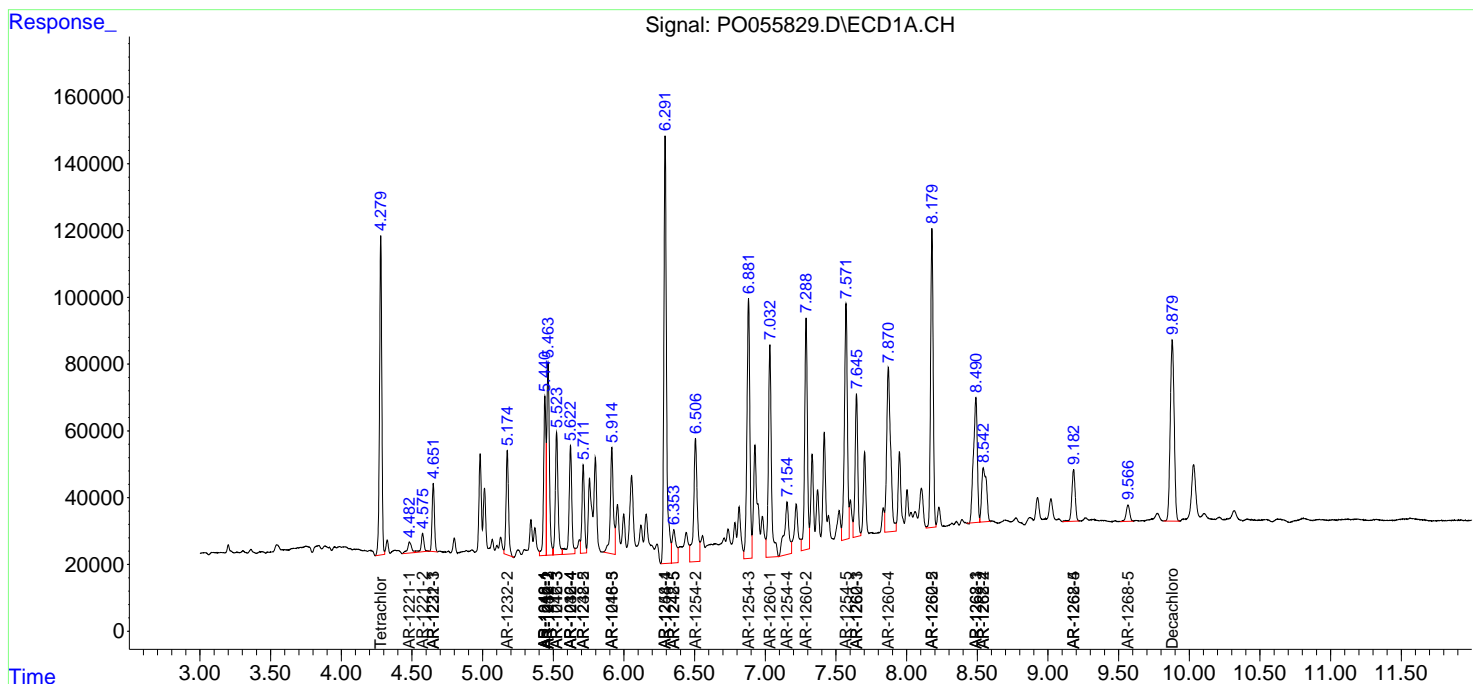
(f)=RT Delta > 1/2 Window (#)=Amounts differ by > 25% (m)=manual int.

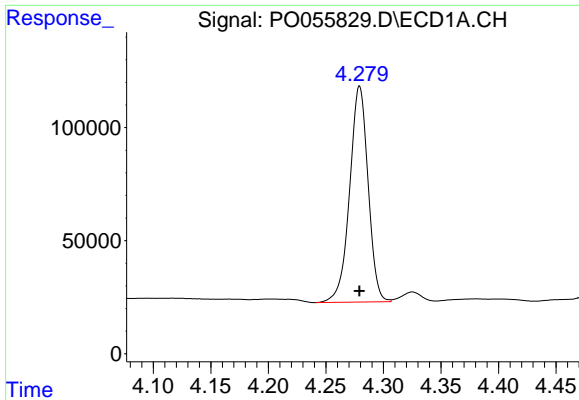
Data Path : Z:\pestpcbsrv\HPCHEM1\ECD\_O\Data\P0050319\  
 Data File : P0055829.D  
 Signal(s) : Signal #1: ECD1A.CH Signal #2: ECD2B.CH  
 Acq On : 03 May 2019 16:54  
 Operator : SM/SJ  
 Sample : K2564-03MS  
 Misc :  
 ALS Vial : 6 Sample Multiplier: 1

Instrument :  
 ECD\_O  
 ClientSampled :  
 C-3\_042419MS

Integration File signal 1: autoint1.e  
 Integration File signal 2: autoint2.e  
 Quant Time: May 03 22:52:46 2019  
 Quant Method : Z:\pestpcbsrv\HPCHEM1\ECD\_O\methods\P0050319.M  
 Quant Title : GC EXTRACTABLES  
 QLast Update : Fri May 03 15:20:04 2019  
 Response via : Initial Calibration  
 Integrator: ChemStation 6890 Scale Mode: Small noise peaks clipped

Volume Inj. : 2 µl  
 Signal #1 Phase : ZB-MR1 Signal #2 Phase: ZB-MR2  
 Signal #1 Info : 30Mx0.32mmx 0.50µ Signal #2 Info : 30M x 0.32mm x 0.25µm

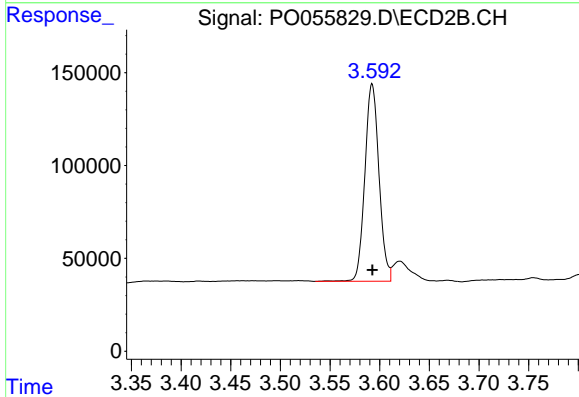




#1 Tetrachloro-m-xylene

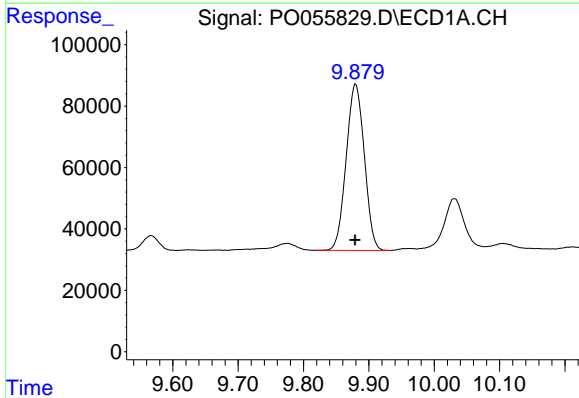
R.T.: 4.279 min  
 Delta R.T.: 0.000 min  
 Response: 1071720  
 Conc: 35.81 ng/ml

Instrument :  
 ECD\_O  
 ClientSampleId :  
 C-3\_042419MS



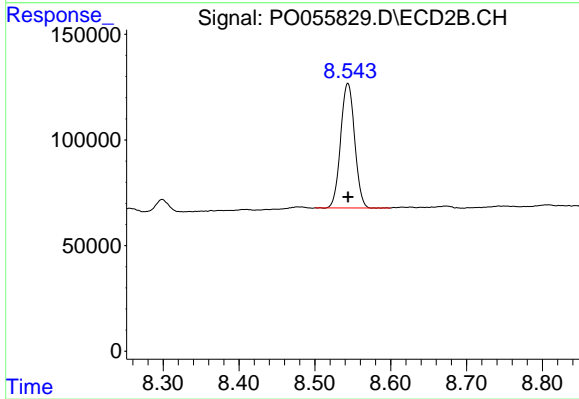
#1 Tetrachloro-m-xylene

R.T.: 3.592 min  
 Delta R.T.: 0.000 min  
 Response: 1051425  
 Conc: 37.23 ng/ml



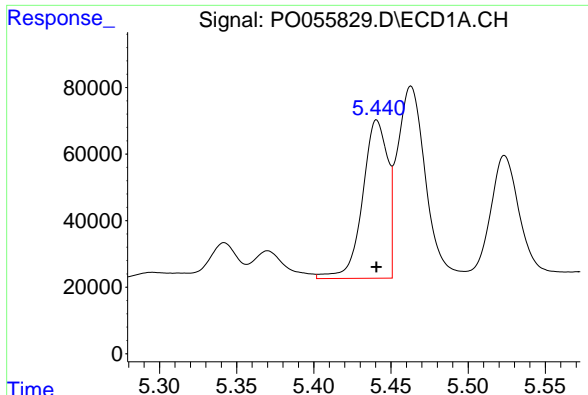
#2 Decachlorobiphenyl

R.T.: 9.879 min  
 Delta R.T.: 0.000 min  
 Response: 1046194  
 Conc: 27.96 ng/ml



#2 Decachlorobiphenyl

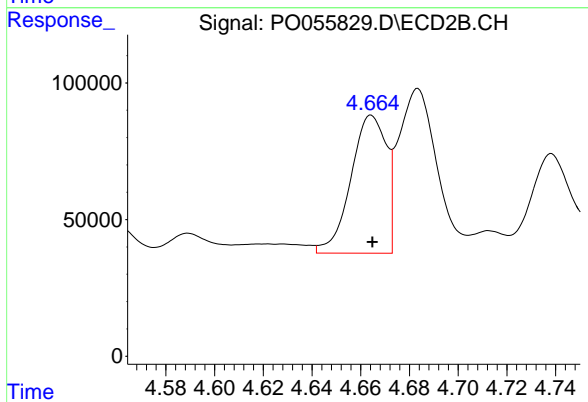
R.T.: 8.544 min  
 Delta R.T.: 0.000 min  
 Response: 754660  
 Conc: 27.91 ng/ml



#3 AR-1016-1

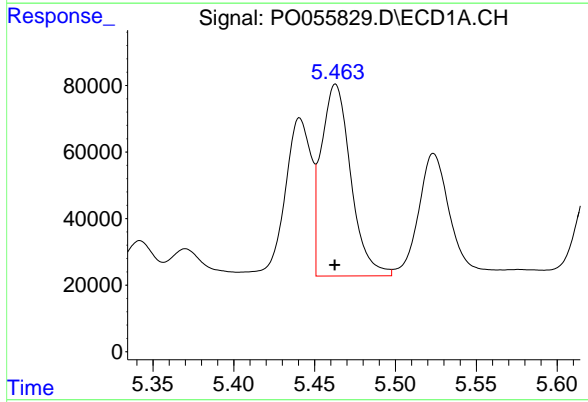
R.T.: 5.441 min  
 Delta R.T.: 0.000 min  
 Response: 541074  
 Conc: 380.74 ng/ml

Instrument :  
 ECD\_O  
 ClientSampleId :  
 C-3\_042419MS



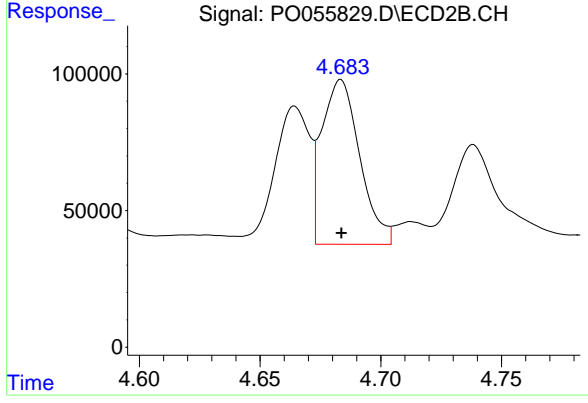
#3 AR-1016-1

R.T.: 4.664 min  
 Delta R.T.: 0.000 min  
 Response: 511138  
 Conc: 380.34 ng/ml



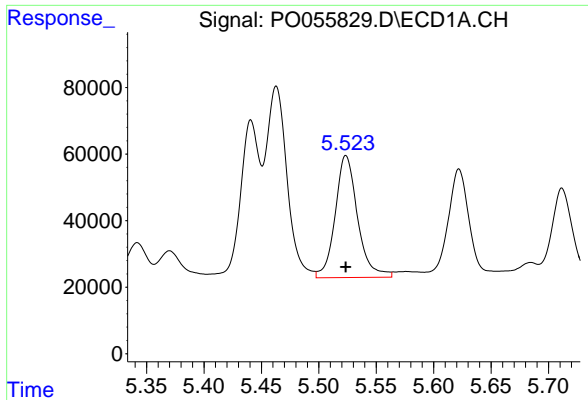
#4 AR-1016-2

R.T.: 5.463 min  
 Delta R.T.: 0.000 min  
 Response: 731402  
 Conc: 369.61 ng/ml



#4 AR-1016-2

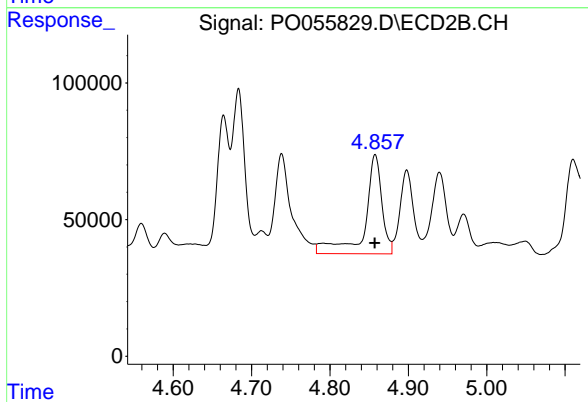
R.T.: 4.683 min  
 Delta R.T.: 0.000 min  
 Response: 659985  
 Conc: 361.45 ng/ml



#5 AR-1016-3

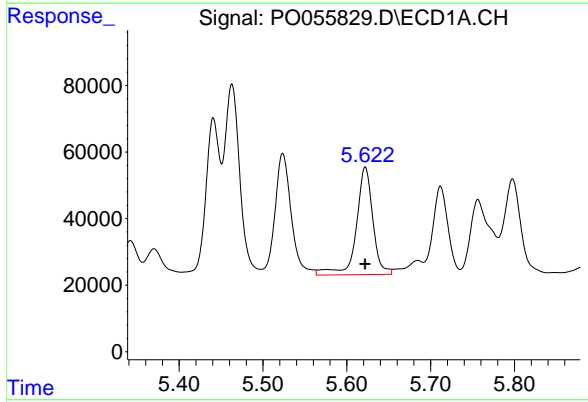
R.T.: 5.524 min  
 Delta R.T.: 0.000 min  
 Response: 497848  
 Conc: 388.42 ng/ml

Instrument :  
 ECD\_O  
 ClientSampleId :  
 C-3\_042419MS



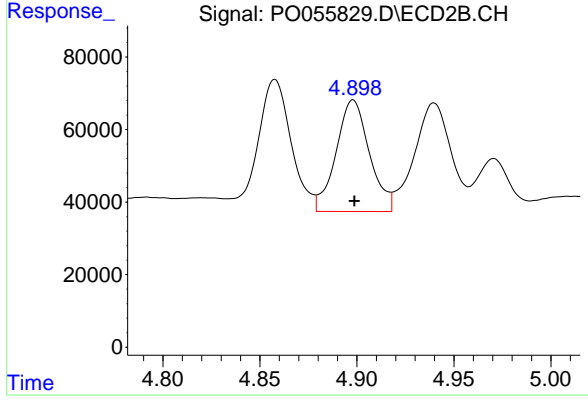
#5 AR-1016-3

R.T.: 4.858 min  
 Delta R.T.: 0.000 min  
 Response: 550622  
 Conc: 549.45 ng/ml



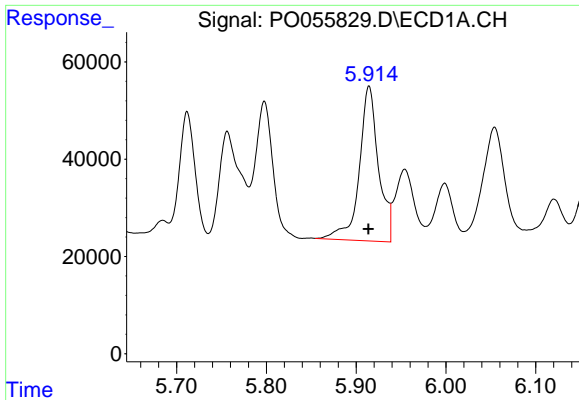
#6 AR-1016-4

R.T.: 5.622 min  
 Delta R.T.: 0.000 min  
 Response: 444591  
 Conc: 425.35 ng/ml



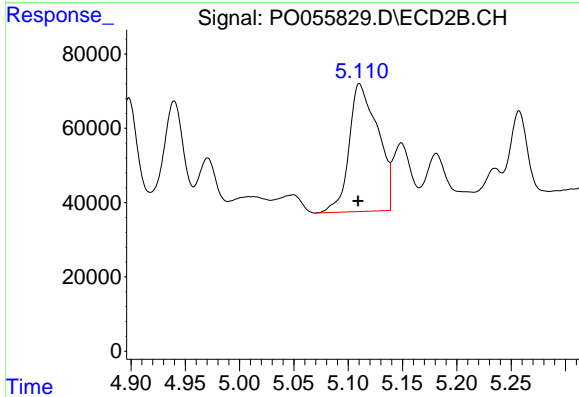
#6 AR-1016-4

R.T.: 4.898 min  
 Delta R.T.: 0.000 min  
 Response: 368391  
 Conc: 452.77 ng/ml

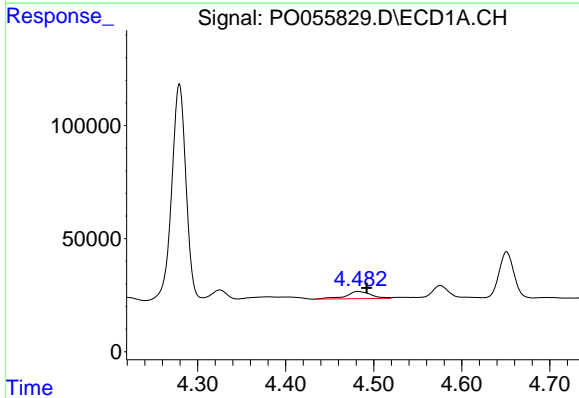


#7 AR-1016-5  
 R.T.: 5.914 min  
 Delta R.T.: 0.000 min  
 Response: 473889  
 Conc: 420.67 ng/ml

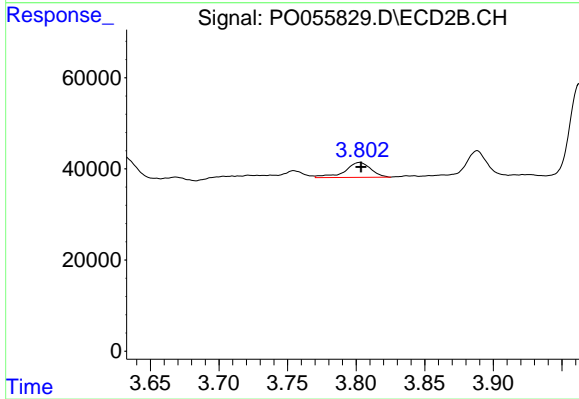
Instrument :  
 ECD\_O  
 ClientSampleId :  
 C-3\_042419MS



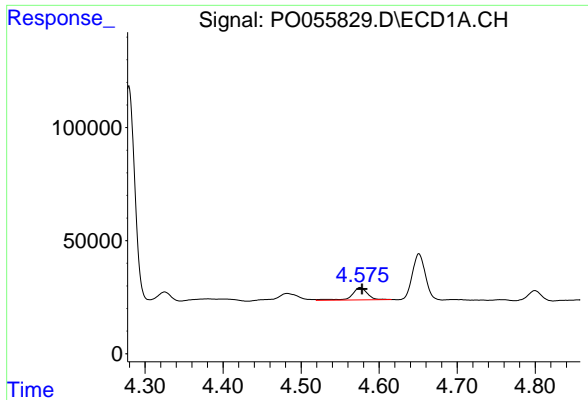
#7 AR-1016-5  
 R.T.: 5.110 min  
 Delta R.T.: 0.001 min  
 Response: 631799  
 Conc: 573.92 ng/ml



#8 AR-1221-1  
 R.T.: 4.482 min  
 Delta R.T.: -0.010 min  
 Response: 64392  
 Conc: 148.11 ng/ml



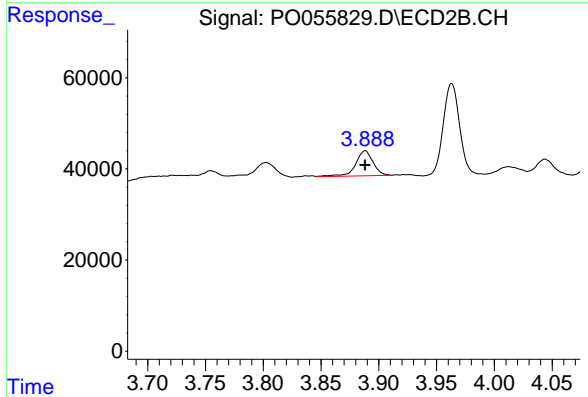
#8 AR-1221-1  
 R.T.: 3.803 min  
 Delta R.T.: 0.000 min  
 Response: 43113  
 Conc: 117.43 ng/ml



#9 AR-1221-2

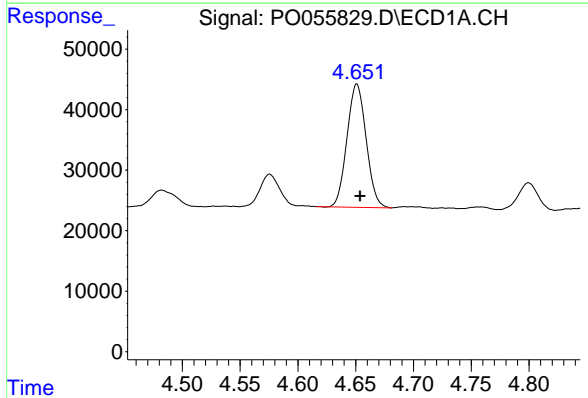
R.T.: 4.576 min  
 Delta R.T.: -0.003 min  
 Response: 75661  
 Conc: 225.63 ng/ml

Instrument :  
 ECD\_O  
 ClientSampleId :  
 C-3\_042419MS



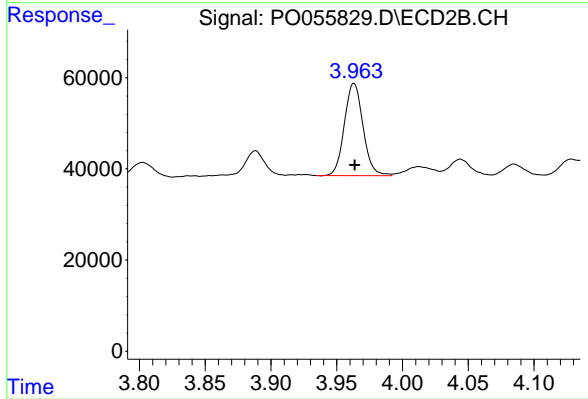
#9 AR-1221-2

R.T.: 3.888 min  
 Delta R.T.: 0.000 min  
 Response: 57942  
 Conc: 208.91 ng/ml



#10 AR-1221-3

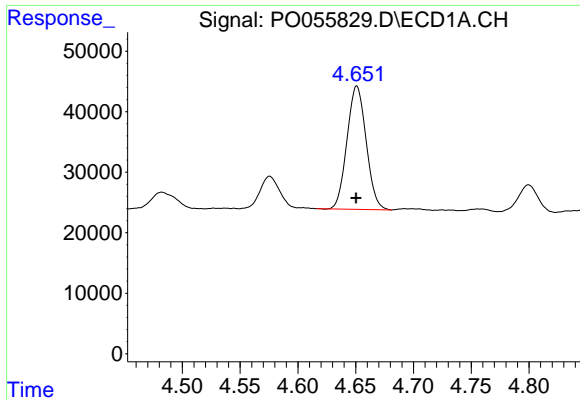
R.T.: 4.651 min  
 Delta R.T.: -0.003 min  
 Response: 234490  
 Conc: 233.19 ng/ml



#10 AR-1221-3

R.T.: 3.963 min  
 Delta R.T.: 0.000 min  
 Response: 200170  
 Conc: 225.29 ng/ml

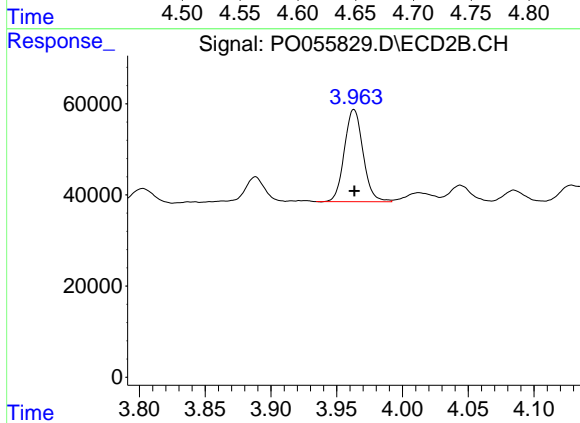




#11 AR-1232-1

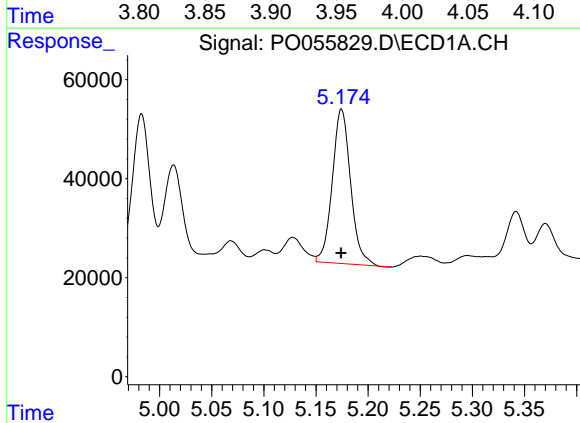
R.T.: 4.651 min  
 Delta R.T.: 0.000 min  
 Response: 234490  
 Conc: 273.01 ng/ml

Instrument :  
 ECD\_O  
 ClientSampleId :  
 C-3\_042419MS



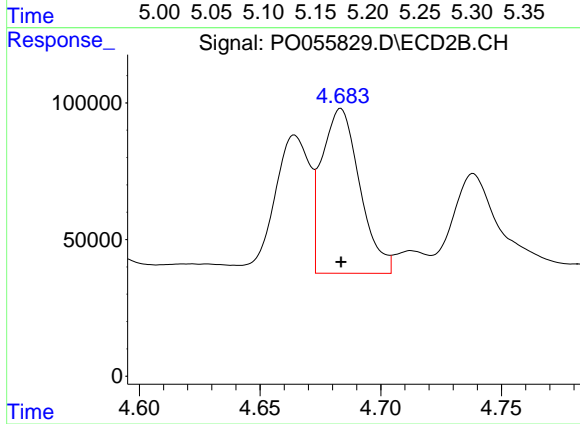
#11 AR-1232-1

R.T.: 3.963 min  
 Delta R.T.: 0.000 min  
 Response: 200170  
 Conc: 270.47 ng/ml



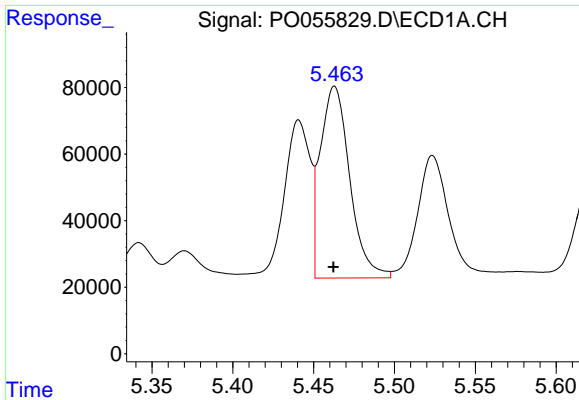
#12 AR-1232-2

R.T.: 5.175 min  
 Delta R.T.: 0.000 min  
 Response: 381288  
 Conc: 785.97 ng/ml



#12 AR-1232-2

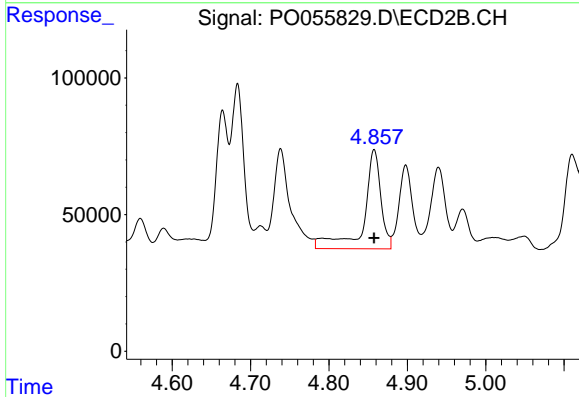
R.T.: 4.683 min  
 Delta R.T.: 0.000 min  
 Response: 659985  
 Conc: 753.02 ng/ml



#13 AR-1232-3

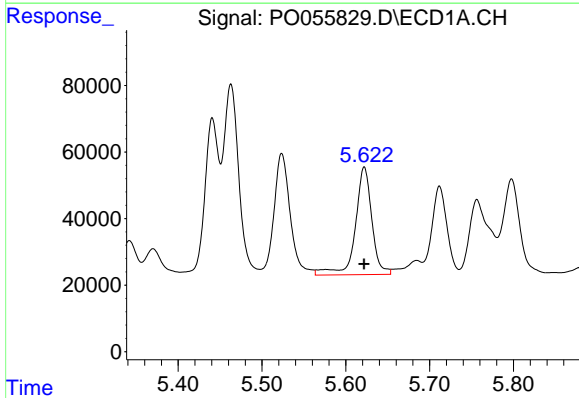
R.T.: 5.463 min  
 Delta R.T.: 0.000 min  
 Response: 731402  
 Conc: 755.98 ng/ml

Instrument :  
 ECD\_O  
 ClientSampleId :  
 C-3\_042419MS



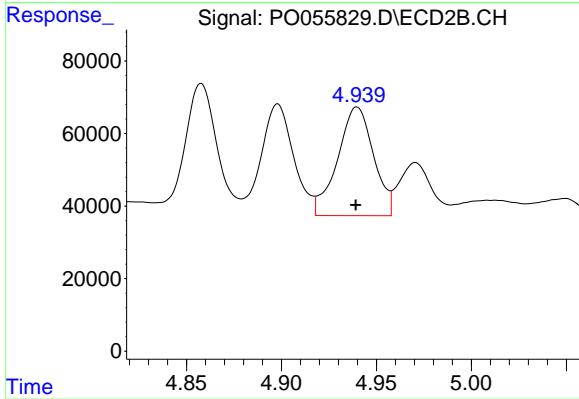
#13 AR-1232-3

R.T.: 4.858 min  
 Delta R.T.: 0.000 min  
 Response: 550622  
 Conc: 1147.92 ng/ml



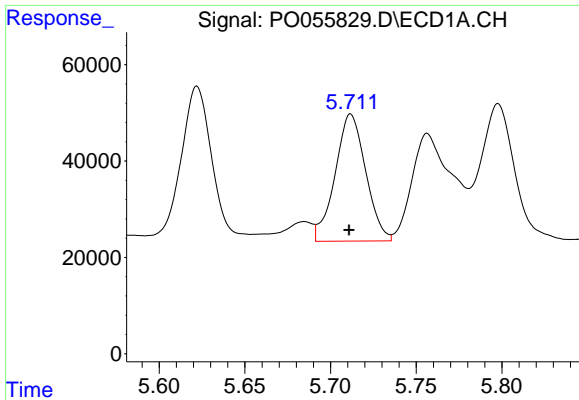
#14 AR-1232-4

R.T.: 5.622 min  
 Delta R.T.: 0.000 min  
 Response: 444591  
 Conc: 874.25 ng/ml



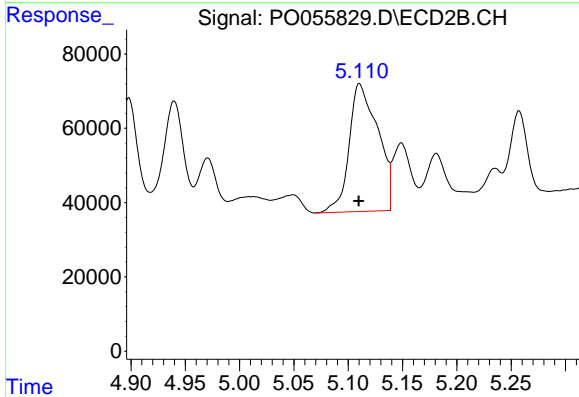
#14 AR-1232-4

R.T.: 4.940 min  
 Delta R.T.: 0.000 min  
 Response: 395859  
 Conc: 931.95 ng/ml

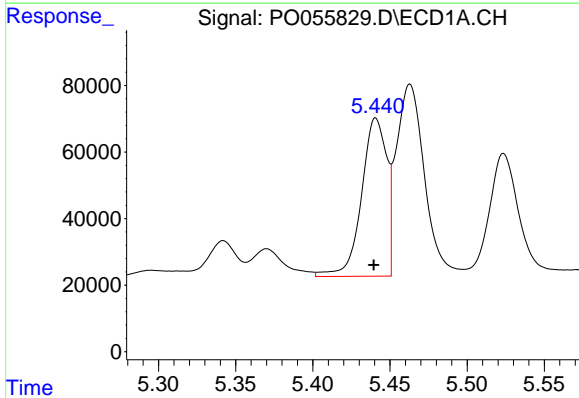


#15 AR-1232-5  
 R.T.: 5.712 min  
 Delta R.T.: 0.000 min  
 Response: 327964  
 Conc: 755.38 ng/ml

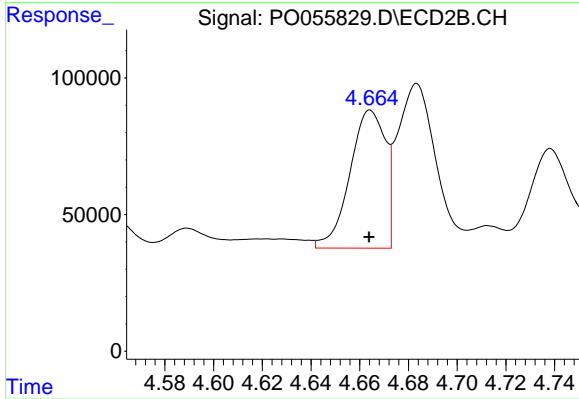
Instrument :  
 ECD\_O  
 ClientSampleId :  
 C-3\_042419MS



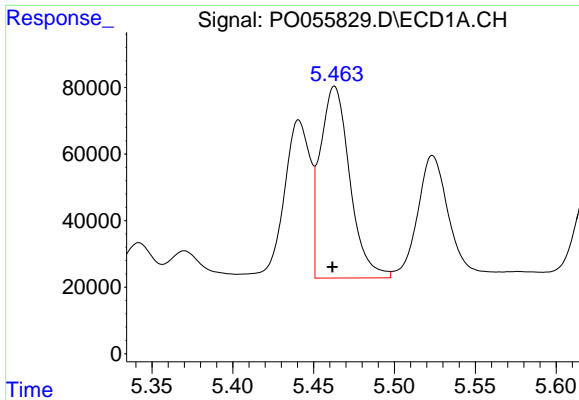
#15 AR-1232-5  
 R.T.: 5.110 min  
 Delta R.T.: 0.000 min  
 Response: 631799  
 Conc: 1303.74 ng/ml



#16 AR-1242-1  
 R.T.: 5.441 min  
 Delta R.T.: 0.001 min  
 Response: 541074  
 Conc: 446.88 ng/ml



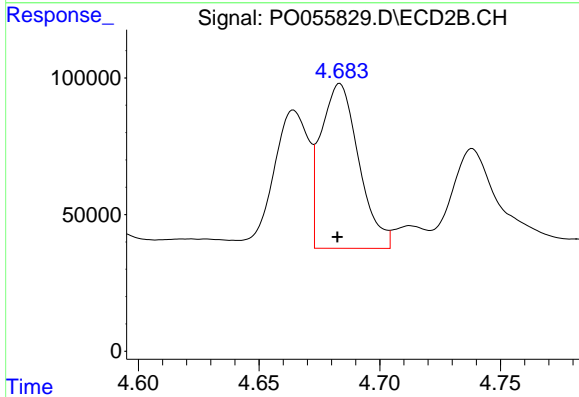
#16 AR-1242-1  
 R.T.: 4.664 min  
 Delta R.T.: 0.000 min  
 Response: 511138  
 Conc: 456.12 ng/ml



#17 AR-1242-2

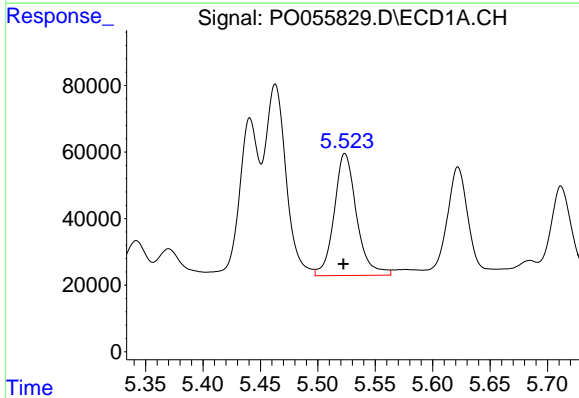
R.T.: 5.463 min  
 Delta R.T.: 0.001 min  
 Response: 731402  
 Conc: 433.19 ng/ml

Instrument :  
 ECD\_O  
 ClientSampleId :  
 C-3\_042419MS



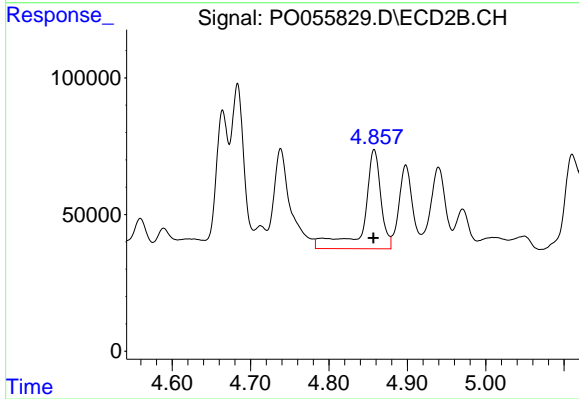
#17 AR-1242-2

R.T.: 4.683 min  
 Delta R.T.: 0.001 min  
 Response: 659985  
 Conc: 433.79 ng/ml



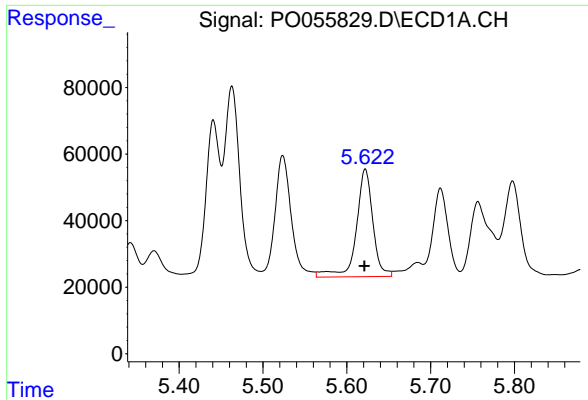
#18 AR-1242-3

R.T.: 5.524 min  
 Delta R.T.: 0.001 min  
 Response: 497848  
 Conc: 454.43 ng/ml



#18 AR-1242-3

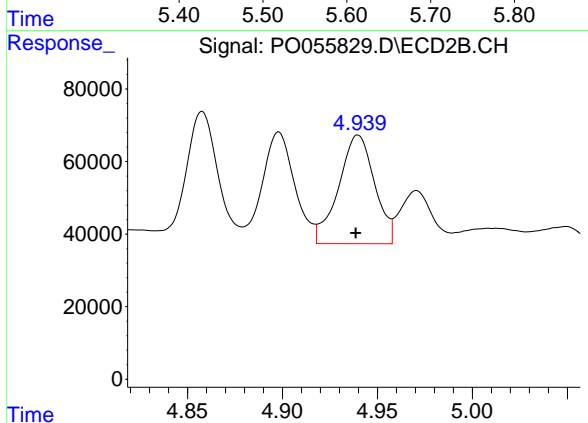
R.T.: 4.858 min  
 Delta R.T.: 0.000 min  
 Response: 550622  
 Conc: 635.81 ng/ml



#19 AR-1242-4

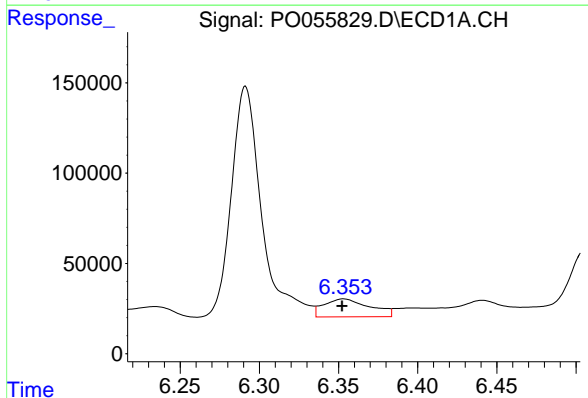
R.T.: 5.622 min  
 Delta R.T.: 0.001 min  
 Response: 444591  
 Conc: 494.09 ng/ml

Instrument :  
 ECD\_O  
 ClientSampleId :  
 C-3\_042419MS



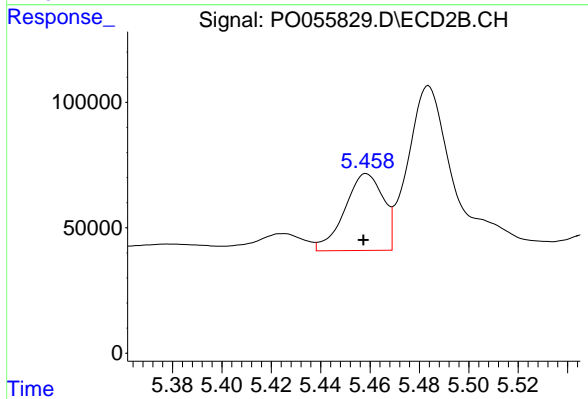
#19 AR-1242-4

R.T.: 4.940 min  
 Delta R.T.: 0.001 min  
 Response: 395859  
 Conc: 472.55 ng/ml



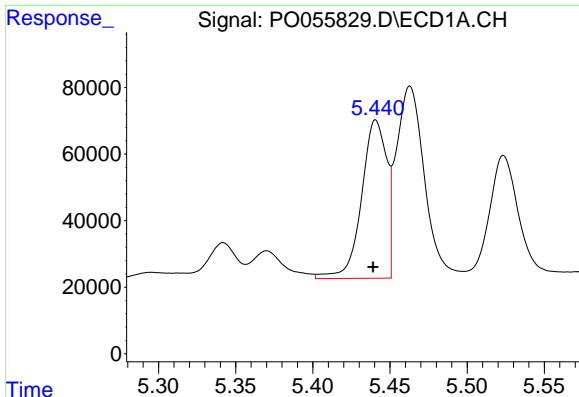
#20 AR-1242-5

R.T.: 6.353 min  
 Delta R.T.: 0.000 min  
 Response: 200418  
 Conc: 183.20 ng/ml



#20 AR-1242-5

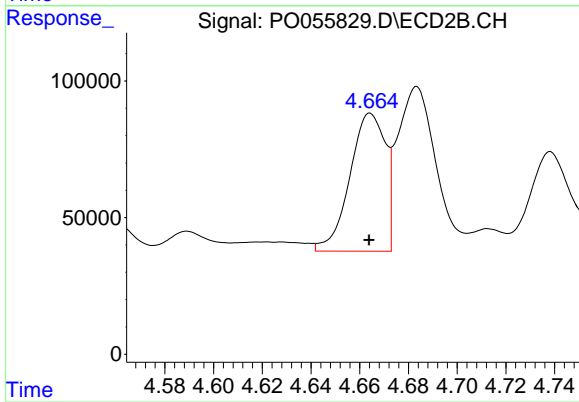
R.T.: 5.459 min  
 Delta R.T.: 0.001 min  
 Response: 331581  
 Conc: 276.23 ng/ml



#21 AR-1248-1

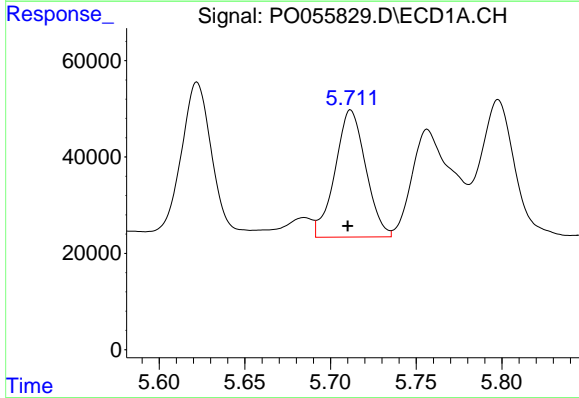
R.T.: 5.441 min  
 Delta R.T.: 0.002 min  
 Response: 541074  
 Conc: 597.79 ng/ml

Instrument :  
 ECD\_O  
 ClientSampleId :  
 C-3\_042419MS



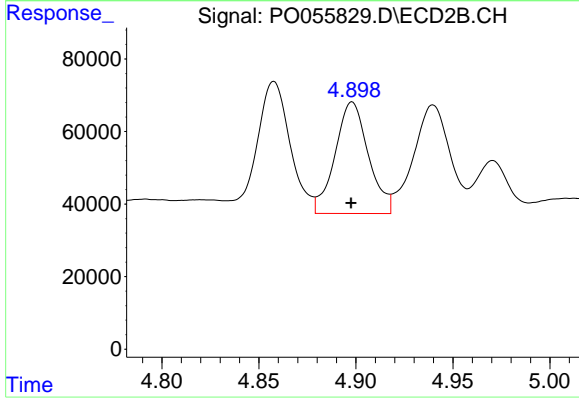
#21 AR-1248-1

R.T.: 4.664 min  
 Delta R.T.: 0.000 min  
 Response: 511138  
 Conc: 609.57 ng/ml



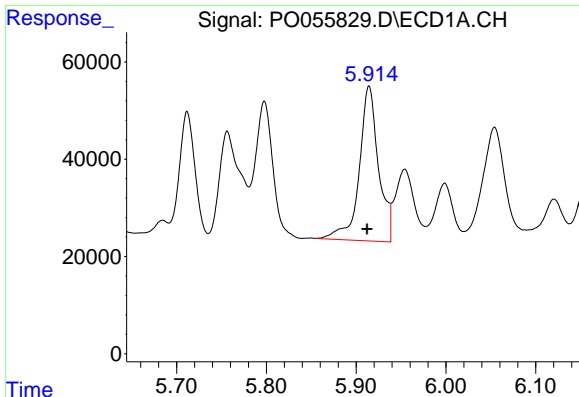
#22 AR-1248-2

R.T.: 5.712 min  
 Delta R.T.: 0.002 min  
 Response: 327964  
 Conc: 245.92 ng/ml



#22 AR-1248-2

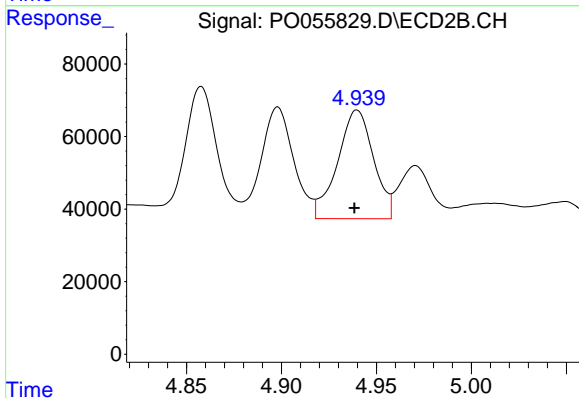
R.T.: 4.898 min  
 Delta R.T.: 0.000 min  
 Response: 368391  
 Conc: 335.28 ng/ml



#23 AR-1248-3

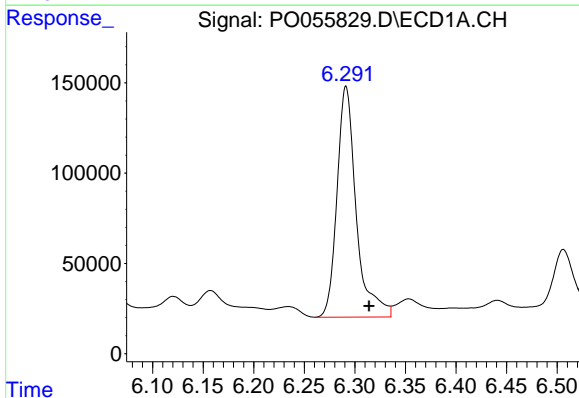
R.T.: 5.914 min  
 Delta R.T.: 0.002 min  
 Response: 473889  
 Conc: 320.90 ng/ml

Instrument :  
 ECD\_O  
 ClientSampleId :  
 C-3\_042419MS



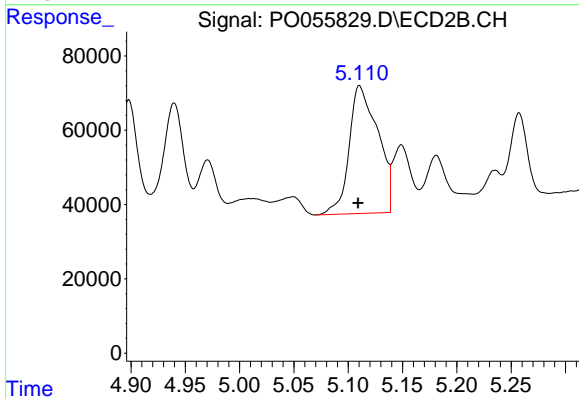
#23 AR-1248-3

R.T.: 4.940 min  
 Delta R.T.: 0.001 min  
 Response: 395859  
 Conc: 348.73 ng/ml



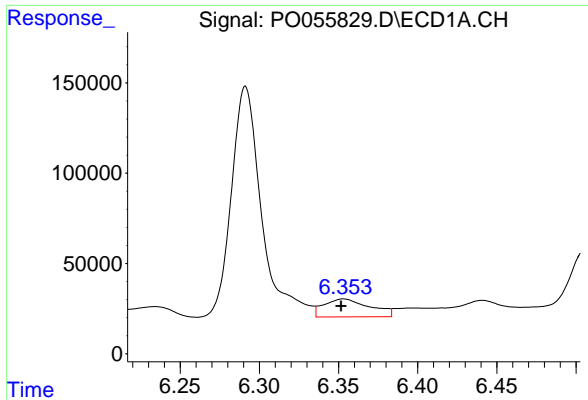
#24 AR-1248-4

R.T.: 6.291 min  
 Delta R.T.: -0.023 min  
 Response: 1689807  
 Conc: 969.07 ng/ml



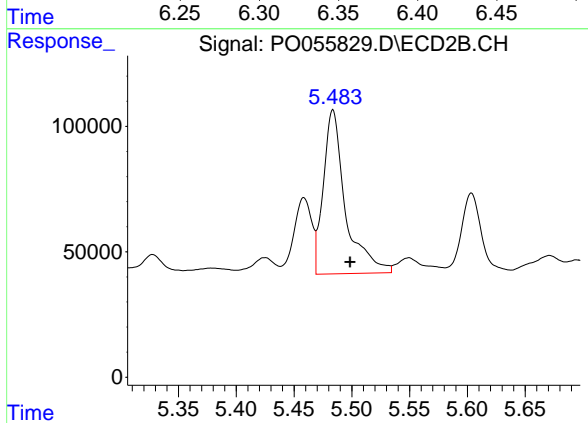
#24 AR-1248-4

R.T.: 5.110 min  
 Delta R.T.: 0.001 min  
 Response: 631799  
 Conc: 449.94 ng/ml

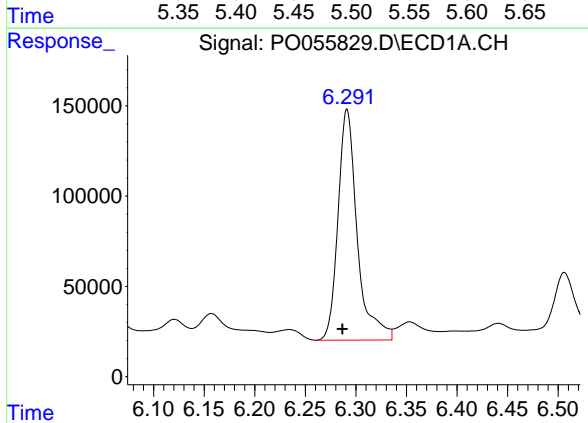


#25 AR-1248-5  
 R.T.: 6.353 min  
 Delta R.T.: 0.001 min  
 Response: 200418  
 Conc: 119.99 ng/ml

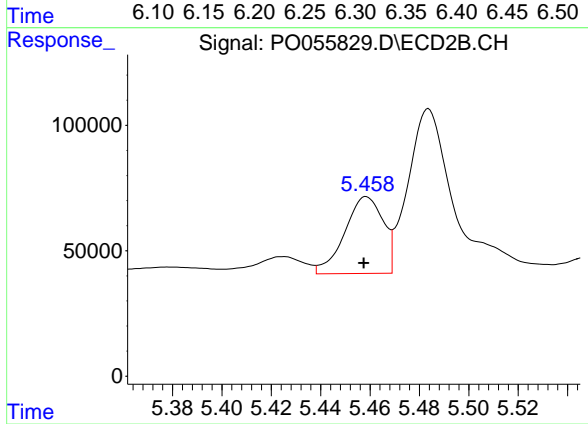
Instrument :  
 ECD\_O  
 ClientSampleId :  
 C-3\_042419MS



#25 AR-1248-5  
 R.T.: 5.484 min  
 Delta R.T.: -0.015 min  
 Response: 872534  
 Conc: 582.58 ng/ml

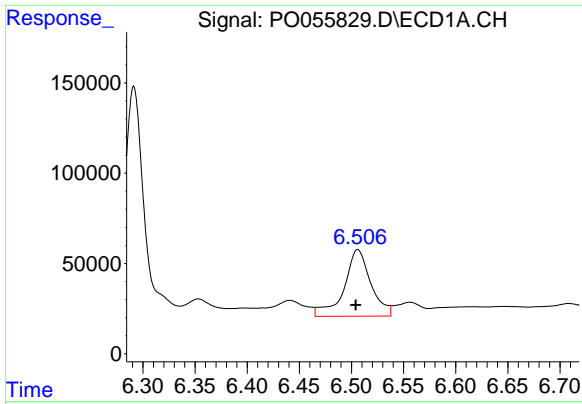


#26 AR-1254-1  
 R.T.: 6.291 min  
 Delta R.T.: 0.004 min  
 Response: 1689807  
 Conc: 804.73 ng/ml



#26 AR-1254-1  
 R.T.: 5.459 min  
 Delta R.T.: 0.001 min  
 Response: 331581  
 Conc: 123.89 ng/ml

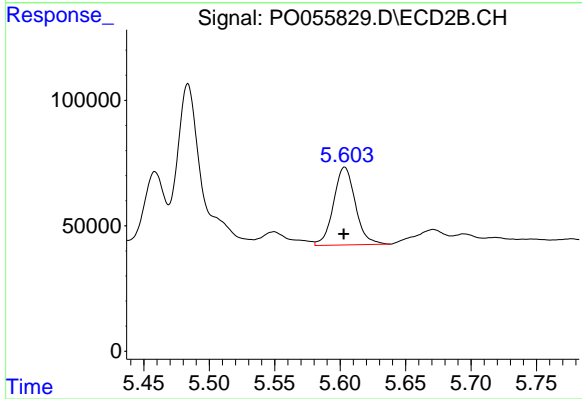




#27 AR-1254-2

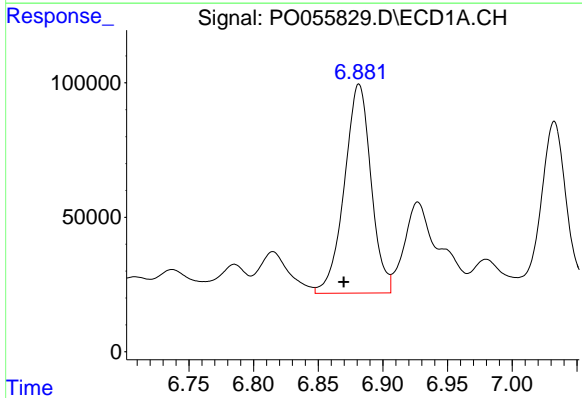
R.T.: 6.506 min  
 Delta R.T.: 0.002 min  
 Response: 656573  
 Conc: 197.83 ng/ml

Instrument :  
 ECD\_O  
 ClientSampleId :  
 C-3\_042419MS



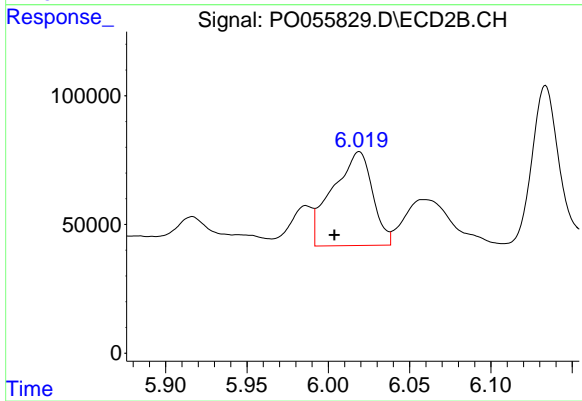
#27 AR-1254-2

R.T.: 5.603 min  
 Delta R.T.: 0.000 min  
 Response: 359356  
 Conc: 147.11 ng/ml



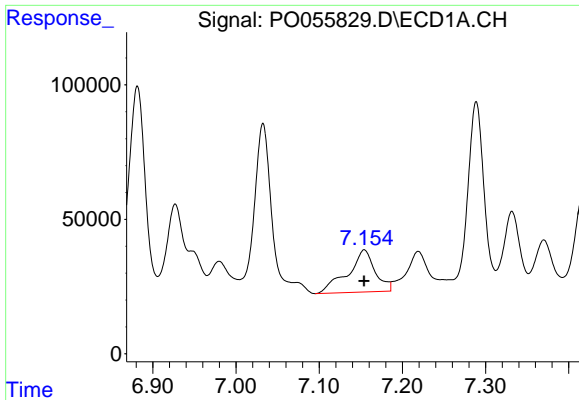
#28 AR-1254-3

R.T.: 6.882 min  
 Delta R.T.: 0.012 min  
 Response: 1116861  
 Conc: 307.21 ng/ml



#28 AR-1254-3

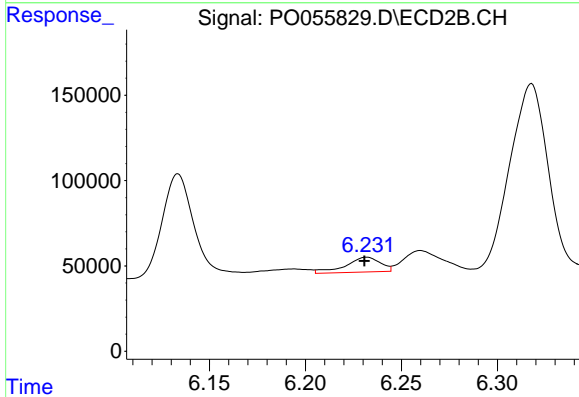
R.T.: 6.019 min  
 Delta R.T.: 0.015 min  
 Response: 622521  
 Conc: 156.90 ng/ml



#29 AR-1254-4

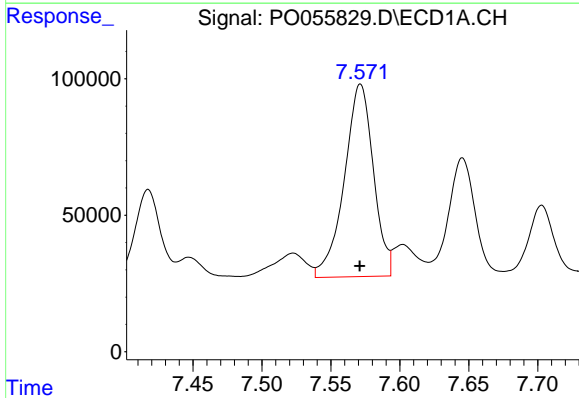
R.T.: 7.154 min  
 Delta R.T.: 0.000 min  
 Response: 358520  
 Conc: 131.78 ng/ml

Instrument :  
 ECD\_O  
 ClientSampleId :  
 C-3\_042419MS



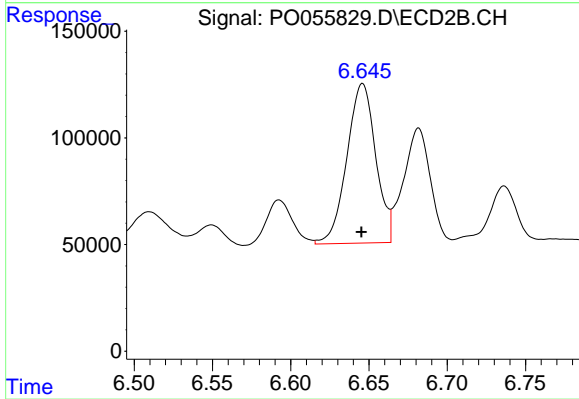
#29 AR-1254-4

R.T.: 6.232 min  
 Delta R.T.: 0.001 min  
 Response: 110831  
 Conc: 41.34 ng/ml



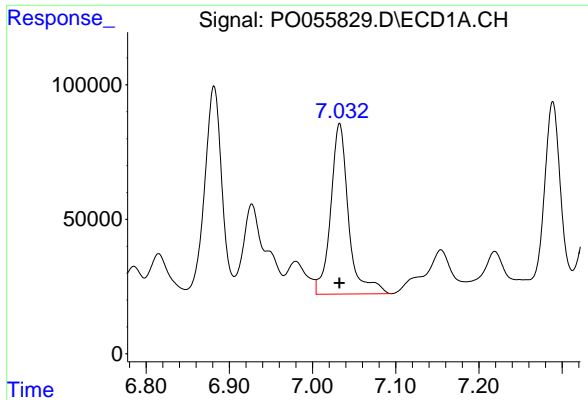
#30 AR-1254-5

R.T.: 7.571 min  
 Delta R.T.: 0.000 min  
 Response: 1037338  
 Conc: 361.93 ng/ml



#30 AR-1254-5

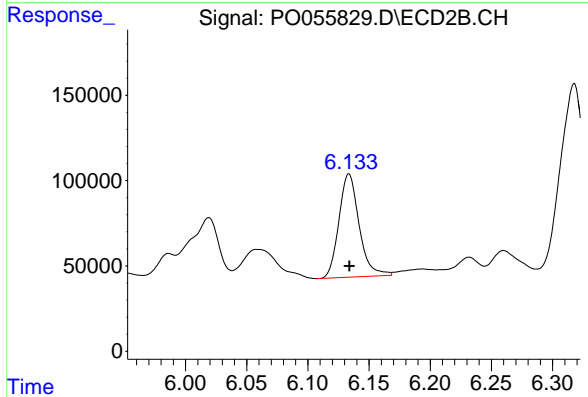
R.T.: 6.646 min  
 Delta R.T.: 0.000 min  
 Response: 959163  
 Conc: 265.06 ng/ml



#31 AR-1260-1

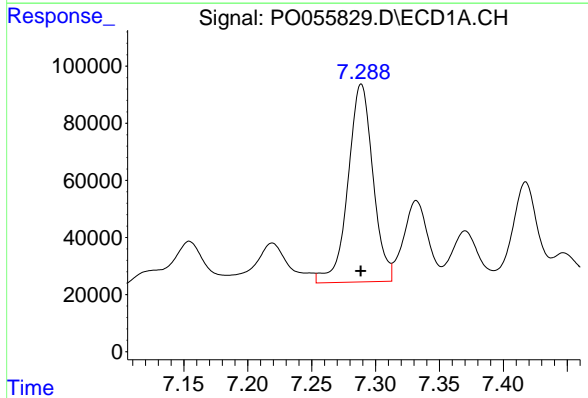
R.T.: 7.033 min  
 Delta R.T.: 0.000 min  
 Response: 950624  
 Conc: 440.21 ng/ml

Instrument :  
 ECD\_O  
 ClientSampleId :  
 C-3\_042419MS



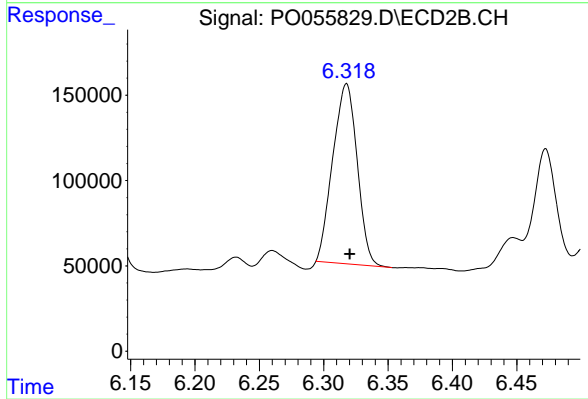
#31 AR-1260-1

R.T.: 6.134 min  
 Delta R.T.: 0.000 min  
 Response: 695866  
 Conc: 315.85 ng/ml



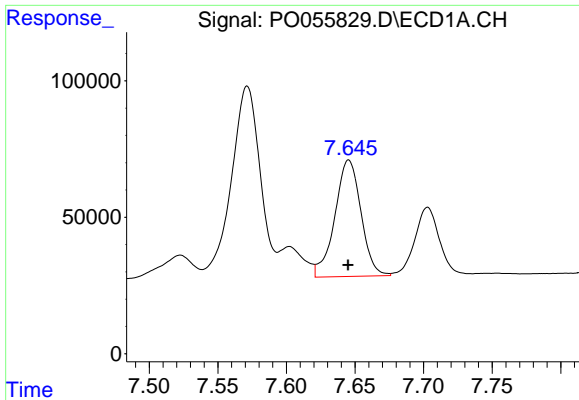
#32 AR-1260-2

R.T.: 7.289 min  
 Delta R.T.: 0.000 min  
 Response: 942432  
 Conc: 359.86 ng/ml



#32 AR-1260-2

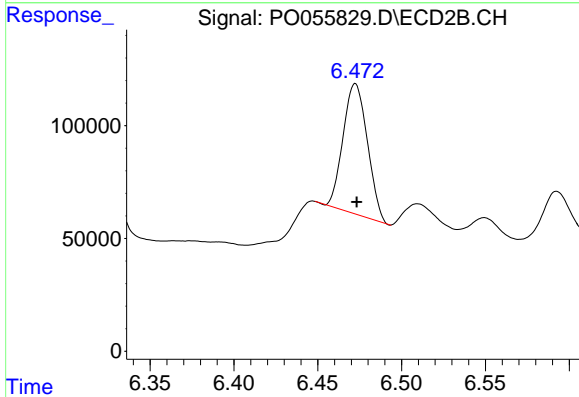
R.T.: 6.318 min  
 Delta R.T.: -0.003 min  
 Response: 1391773  
 Conc: 455.79 ng/ml



#33 AR-1260-3

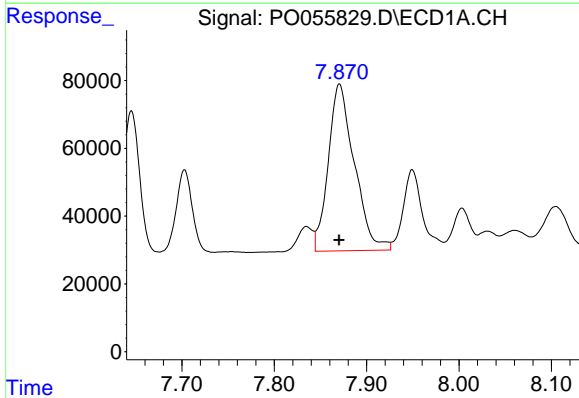
R.T.: 7.645 min  
 Delta R.T.: 0.000 min  
 Response: 566697  
 Conc: 283.35 ng/ml

Instrument :  
 ECD\_O  
 ClientSampleId :  
 C-3\_042419MS



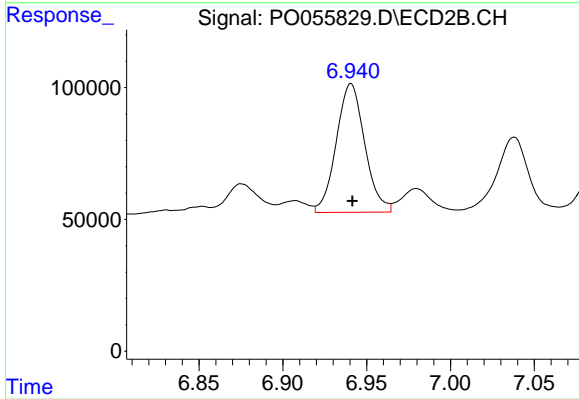
#33 AR-1260-3

R.T.: 6.472 min  
 Delta R.T.: 0.000 min  
 Response: 583286  
 Conc: 234.06 ng/ml



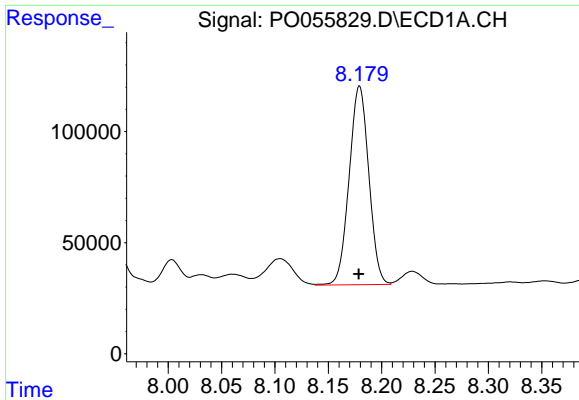
#34 AR-1260-4

R.T.: 7.871 min  
 Delta R.T.: 0.000 min  
 Response: 964130  
 Conc: 416.90 ng/ml



#34 AR-1260-4

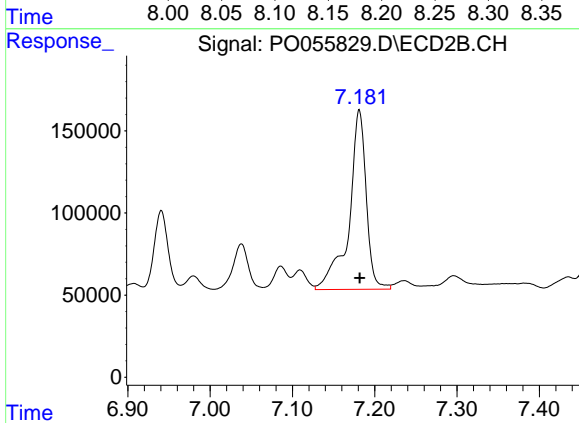
R.T.: 6.941 min  
 Delta R.T.: 0.000 min  
 Response: 576756  
 Conc: 279.51 ng/ml



#35 AR-1260-5

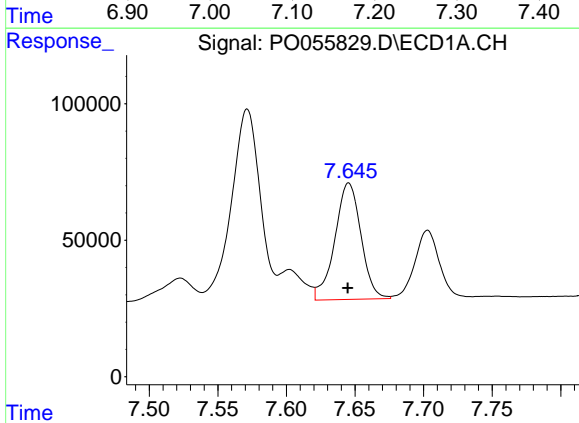
R.T.: 8.179 min  
 Delta R.T.: 0.000 min  
 Response: 1146517  
 Conc: 270.26 ng/ml

Instrument :  
 ECD\_O  
 ClientSampleId :  
 C-3\_042419MS



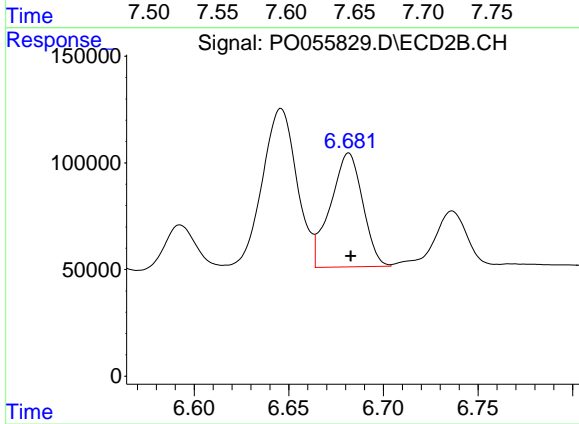
#35 AR-1260-5

R.T.: 7.181 min  
 Delta R.T.: 0.000 min  
 Response: 1590350  
 Conc: 316.66 ng/ml



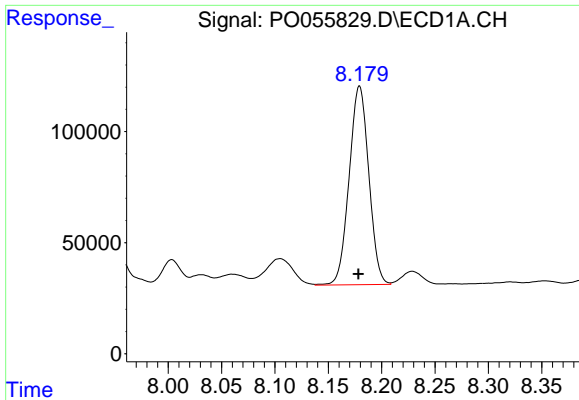
#36 AR-1262-1

R.T.: 7.645 min  
 Delta R.T.: 0.000 min  
 Response: 566697  
 Conc: 176.77 ng/ml



#36 AR-1262-1

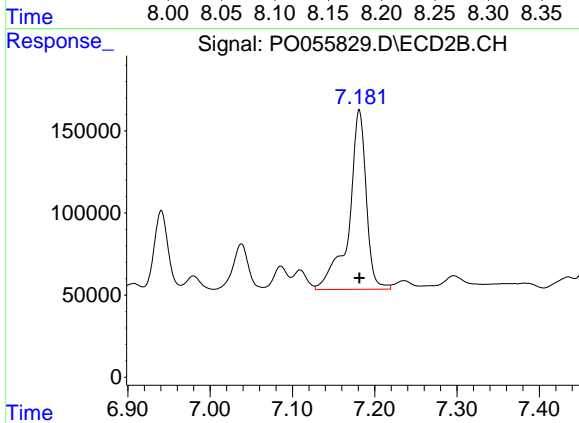
R.T.: 6.682 min  
 Delta R.T.: -0.001 min  
 Response: 633541  
 Conc: 154.49 ng/ml



#37 AR-1262-2

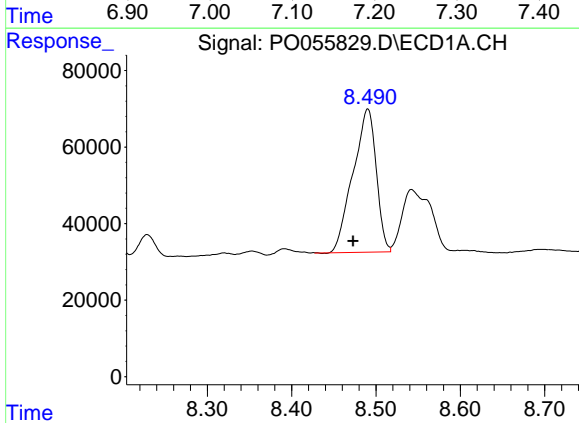
R.T.: 8.179 min  
 Delta R.T.: 0.001 min  
 Response: 1146517  
 Conc: 213.56 ng/ml

Instrument :  
 ECD\_O  
 ClientSampleId :  
 C-3\_042419MS



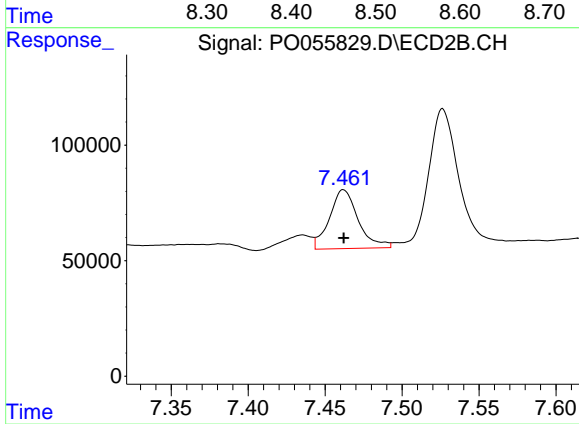
#37 AR-1262-2

R.T.: 7.181 min  
 Delta R.T.: 0.000 min  
 Response: 1590350  
 Conc: 254.34 ng/ml



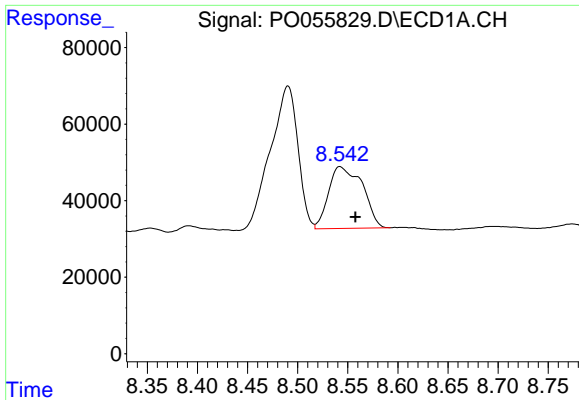
#38 AR-1262-3

R.T.: 8.490 min  
 Delta R.T.: 0.018 min  
 Response: 716426  
 Conc: 197.42 ng/ml



#38 AR-1262-3

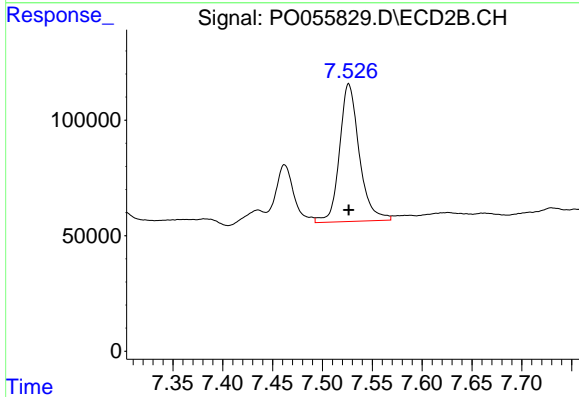
R.T.: 7.462 min  
 Delta R.T.: 0.000 min  
 Response: 330314  
 Conc: 134.11 ng/ml



#39 AR-1262-4

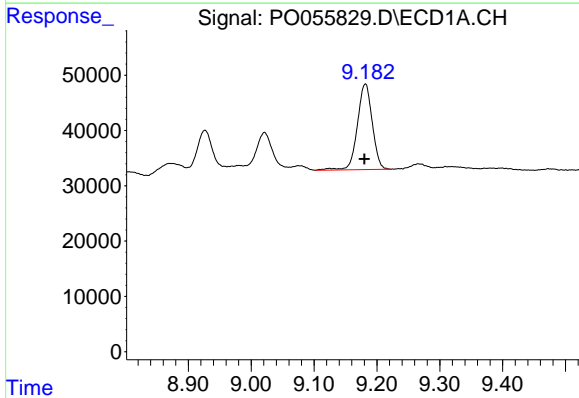
R.T.: 8.542 min  
 Delta R.T.: -0.015 min  
 Response: 379870  
 Conc: 139.91 ng/ml

Instrument :  
 ECD\_O  
 ClientSampleId :  
 C-3\_042419MS



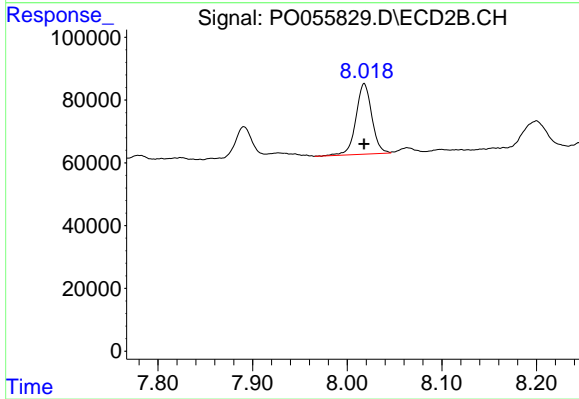
#39 AR-1262-4

R.T.: 7.526 min  
 Delta R.T.: 0.000 min  
 Response: 821538  
 Conc: 200.62 ng/ml



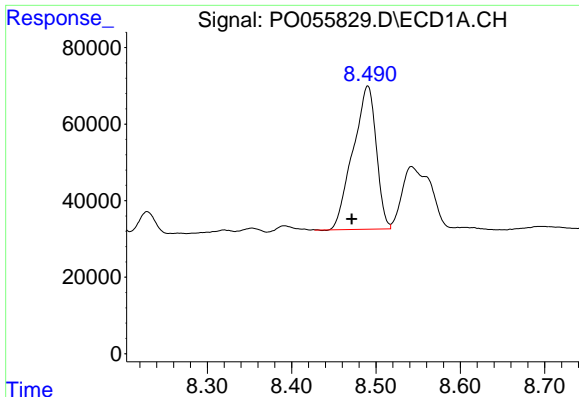
#40 AR-1262-5

R.T.: 9.182 min  
 Delta R.T.: 0.002 min  
 Response: 255206  
 Conc: 141.27 ng/ml



#40 AR-1262-5

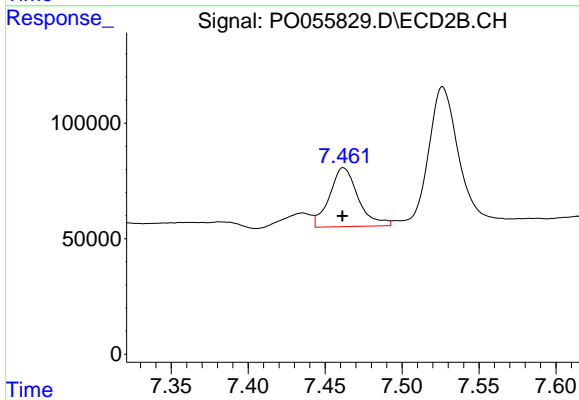
R.T.: 8.018 min  
 Delta R.T.: 0.000 min  
 Response: 262504  
 Conc: 154.04 ng/ml



#41 AR-1268-1

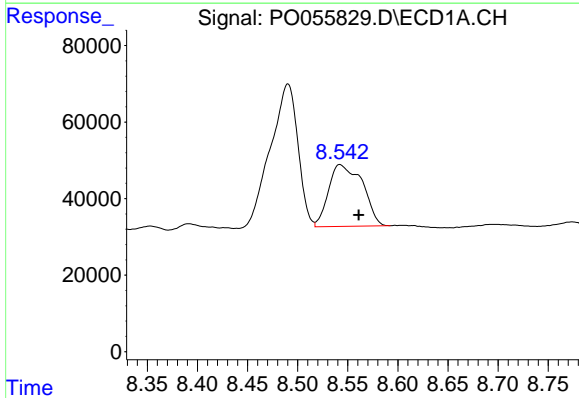
R.T.: 8.490 min  
 Delta R.T.: 0.019 min  
 Response: 716426  
 Conc: 118.64 ng/ml

Instrument :  
 ECD\_O  
 ClientSampleId :  
 C-3\_042419MS



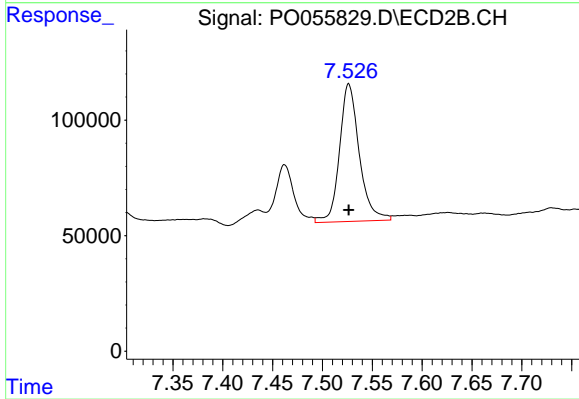
#41 AR-1268-1

R.T.: 7.462 min  
 Delta R.T.: 0.000 min  
 Response: 330314  
 Conc: 47.67 ng/ml



#42 AR-1268-2

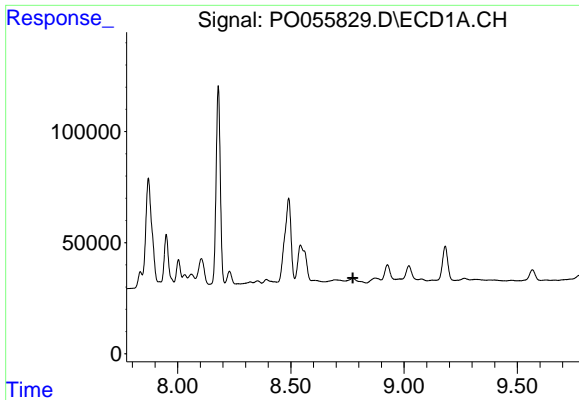
R.T.: 8.542 min  
 Delta R.T.: -0.019 min  
 Response: 379870  
 Conc: 69.40 ng/ml



#42 AR-1268-2

R.T.: 7.526 min  
 Delta R.T.: 0.000 min  
 Response: 821538  
 Conc: 144.40 ng/ml

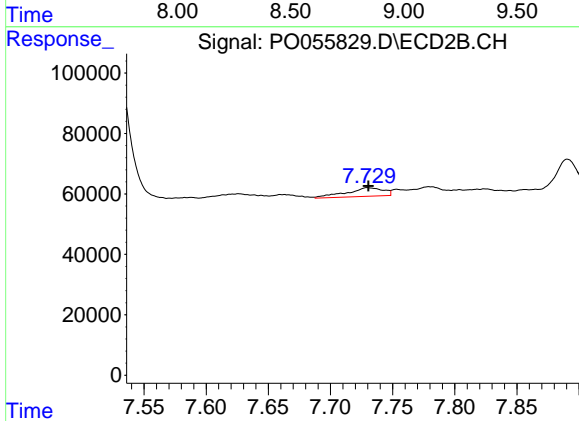




#43 AR-1268-3

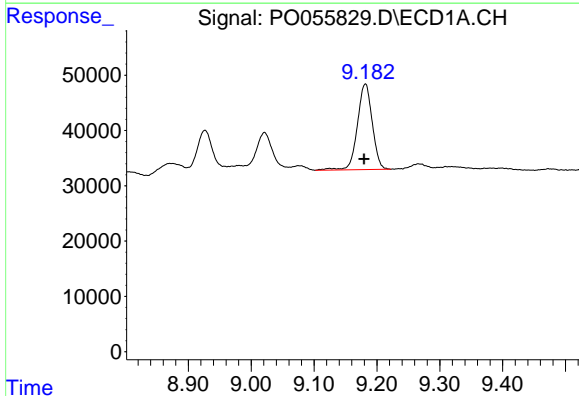
R.T.: 0.000 min  
 Exp R.T.: 8.774 min  
 Response: 0  
 Conc: N.D.

Instrument :  
 ECD\_O  
 ClientSampleId :  
 C-3\_042419MS



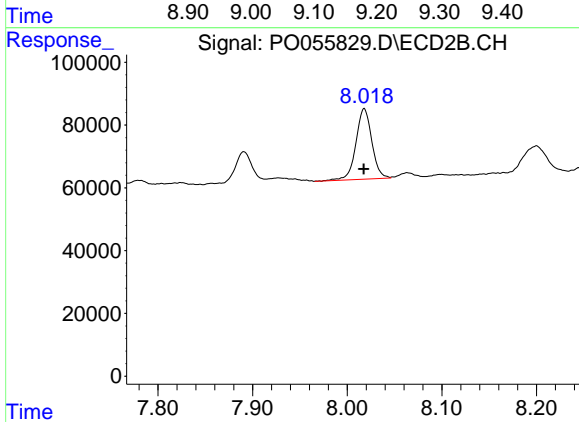
#43 AR-1268-3

R.T.: 7.730 min  
 Delta R.T.: 0.000 min  
 Response: 59434  
 Conc: 12.58 ng/ml



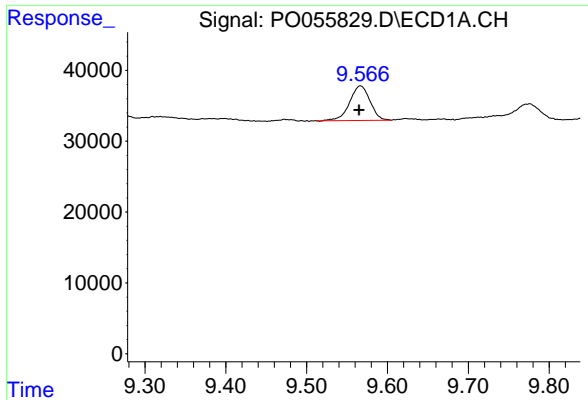
#44 AR-1268-4

R.T.: 9.182 min  
 Delta R.T.: 0.002 min  
 Response: 255206  
 Conc: 130.06 ng/ml



#44 AR-1268-4

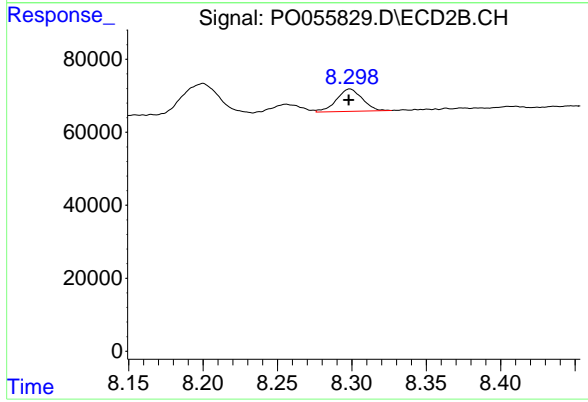
R.T.: 8.018 min  
 Delta R.T.: 0.000 min  
 Response: 262504  
 Conc: 138.77 ng/ml



#45 AR-1268-5

R.T.: 9.567 min  
Delta R.T.: 0.002 min  
Response: 85568  
Conc: 6.34 ng/ml

Instrument :  
ECD\_O  
ClientSampleId :  
C-3\_042419MS



#45 AR-1268-5

R.T.: 8.299 min  
Delta R.T.: 0.000 min  
Response: 74237  
Conc: 6.10 ng/ml