

Data Path : Z:\pestpcbsrv\HPCHEM1\ECD_0\Data\P0050319\
 Data File : P0055842.D
 Signal(s) : Signal #1: ECD1A.CH Signal #2: ECD2B.CH
 Acq On : 03 May 2019 20:49
 Operator : SM/SJ
 Sample : AR1660CCC500
 Misc :
 ALS Vial : 3 Sample Multiplier: 1

Instrument :
 ECD_0
 ClientSampled :
 AR1660CCC500

Integration File signal 1: autoint1.e
 Integration File signal 2: autoint2.e
 Quant Time: May 03 22:59:27 2019
 Quant Method : Z:\pestpcbsrv\HPCHEM1\ECD_0\methods\P0050319.M
 Quant Title : GC EXTRACTABLES
 QLast Update : Fri May 03 15:20:04 2019
 Response via : Initial Calibration
 Integrator: ChemStation 6890 Scale Mode: Small noise peaks clipped

Volume Inj. : 2 µl
 Signal #1 Phase : ZB-MR1 Signal #2 Phase: ZB-MR2
 Signal #1 Info : 30Mx0.32mmx 0.50µ Signal #2 Info : 30M x 0.32mm x 0.25µm

Compound	RT#1	RT#2	Resp#1	Resp#2	ng/ml	ng/ml
System Monitoring Compounds						
1) SA Tetrachlo...	4.278	3.591	1883406	1849429	62.936	65.482
2) SA Decachlor...	9.877	8.543	2014999	1534927	53.853	56.759
Target Compounds						
3) L1 AR-1016-1	5.440	4.664	863226	861255	607.427	640.857
4) L1 AR-1016-2	5.462	4.682	1227169	1171395	620.135	641.527
5) L1 AR-1016-3	5.522	4.857	774737	646440	604.442	645.067
6) L1 AR-1016-4	5.621	4.897	644389	513572	616.506	631.208
7) L1 AR-1016-5	5.913	5.109	675811	698329	599.911	634.350
8) L2 AR-1221-1	4.483	3.801	70491	58788	162.142	160.125
9) L2 AR-1221-2	4.575	3.887	107801	94800	321.469	341.806
10) L2 AR-1221-3	4.650	3.962	389562	357876	387.397	402.786
11) L3 AR-1232-1	4.650	3.962	389562	357876	453.558	483.566
12) L3 AR-1232-2	5.174	4.682	583269	1171395	1202.330	1336.524
13) L3 AR-1232-3	5.462	4.857	1227169	646440	1268.410	1347.678
14) L3 AR-1232-4	5.621	4.939	644389	626032	1267.136	1473.836
15) L3 AR-1232-5	5.710	5.109	604460	698329	1392.206	1441.024
16) L4 AR-1242-1	5.440	4.664	863226	861255	712.942	768.552
17) L4 AR-1242-2	5.462	4.682	1227169	1171395	726.825	769.921
18) L4 AR-1242-3	5.522	4.857	774737	646440	707.173	746.454
19) L4 AR-1242-4	5.621	4.939	644389	626032	716.130	747.320
20) L4 AR-1242-5	6.352	5.458	120127	542714	109.809	452.112 #
21) L5 AR-1248-1	5.440	4.664	863226	861255	953.715	1027.102
22) L5 AR-1248-2	5.710	4.897	604460	513572	453.248	467.409
23) L5 AR-1248-3	5.913	4.939	675811	626032	457.640	551.499
24) L5 AR-1248-4	6.314	5.109	148979	698329	85.437	497.323 #
25) L5 AR-1248-5	6.352	5.499	120127	113033	71.918	75.470
26) L6 AR-1254-1	6.286	5.458	513898	542714	244.733	202.783
27) L6 AR-1254-2	6.504	5.603	551902	520699	166.294	213.166 #
28) L6 AR-1254-3	6.869	6.018	358486	989776	98.606	249.464 #
29) L6 AR-1254-4	7.153	6.232	241230	154453	88.665	57.606 #
30) L6 AR-1254-5	7.569	6.645	1738294	1652085	606.497	456.543
31) L7 AR-1260-1	7.031	6.133	1235767	1246509	572.248	565.776
32) L7 AR-1260-2	7.287	6.320	1491438	1712268	569.493	560.742
33) L7 AR-1260-3	7.644	6.472	1148012	1416009	574.010	568.216
34) L7 AR-1260-4	7.869	6.940	1303649	1176299	563.714	570.059
35) L7 AR-1260-5	8.178	7.181	2363574	2827992	557.142	563.090
36) L8 AR-1262-1	7.644	6.683	1148012	1509471	358.100	368.093
37) L8 AR-1262-2	8.178	7.181	2363574	2827992	440.250	452.274
38) L8 AR-1262-3	8.489	7.462	1505139	635058	414.769	257.843 #
39) L8 AR-1262-4	8.541	7.526	951754	1821615	350.542	444.844 #
40) L8 AR-1262-5	9.179	8.018	639795	605149	354.160	355.106
41) L9 AR-1268-1	8.489	7.462	1505139	635058	249.242	91.655 #

Data Path : Z:\pestpcbsrv\HPCHEM1\ECD_0\Data\P0050319\
 Data File : P0055842.D
 Signal(s) : Signal #1: ECD1A.CH Signal #2: ECD2B.CH
 Acq On : 03 May 2019 20:49
 Operator : SM/SJ
 Sample : AR1660CCC500
 Misc :
 ALS Vial : 3 Sample Multiplier: 1

Instrument :
 ECD_0
 ClientSampleId :
 AR1660CCC500

Integration File signal 1: autoint1.e
 Integration File signal 2: autoint2.e
 Quant Time: May 03 22:59:27 2019
 Quant Method : Z:\pestpcbsrv\HPCHEM1\ECD_0\methods\P0050319.M
 Quant Title : GC EXTRACTABLES
 QLast Update : Fri May 03 15:20:04 2019
 Response via : Initial Calibration
 Integrator: ChemStation 6890 Scale Mode: Small noise peaks clipped

Volume Inj. : 2 µl
 Signal #1 Phase : ZB-MR1 Signal #2 Phase: ZB-MR2
 Signal #1 Info : 30Mx0.32mmx 0.50µ Signal #2 Info : 30M x 0.32mm x 0.25µm

	Compound	RT#1	RT#2	Resp#1	Resp#2	ng/ml	ng/ml
42)	L9 AR-1268-2	8.541	7.526	951754	1821615	173.877	320.190 #
43)	L9 AR-1268-3	8.773	7.730	33964	46937	7.530	9.938 #
44)	L9 AR-1268-4	9.179	8.018	639795	605149	326.060	319.896
45)	L9 AR-1268-5	9.564	8.298	177746	141822	13.175	11.646

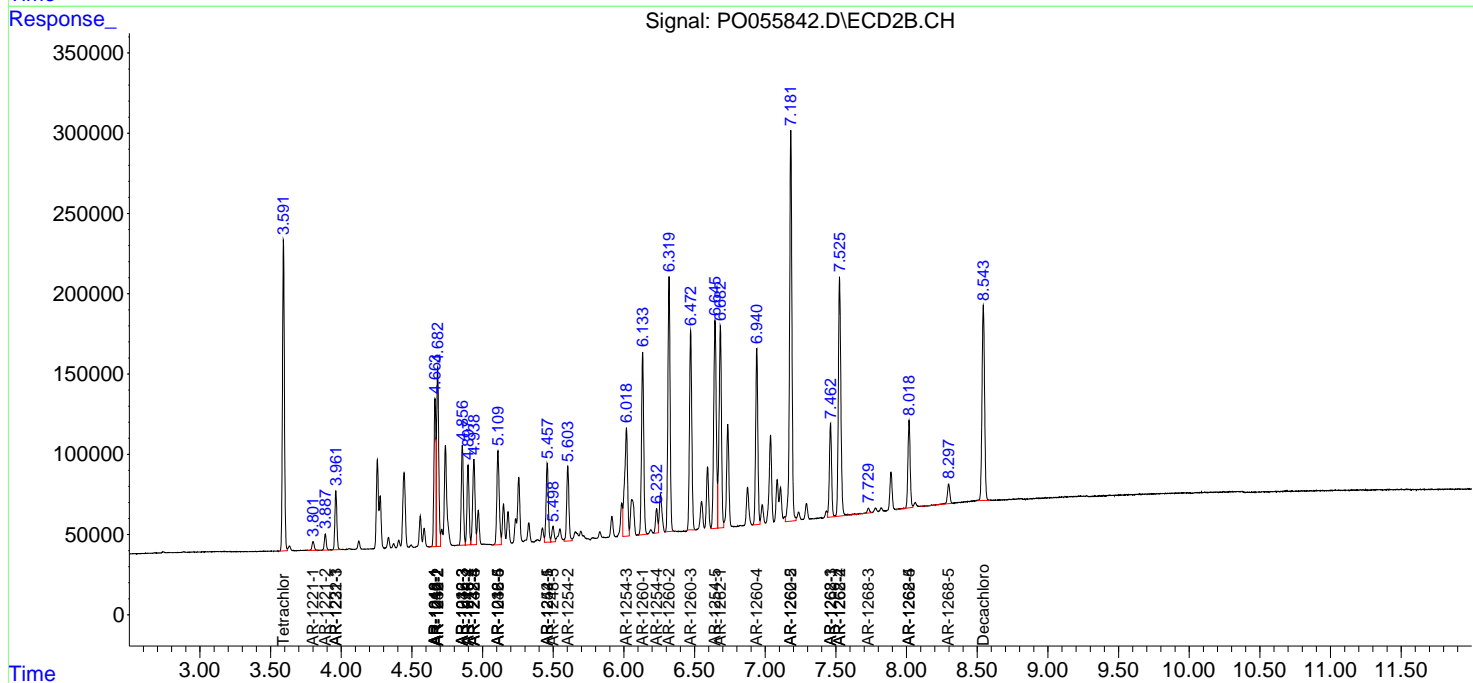
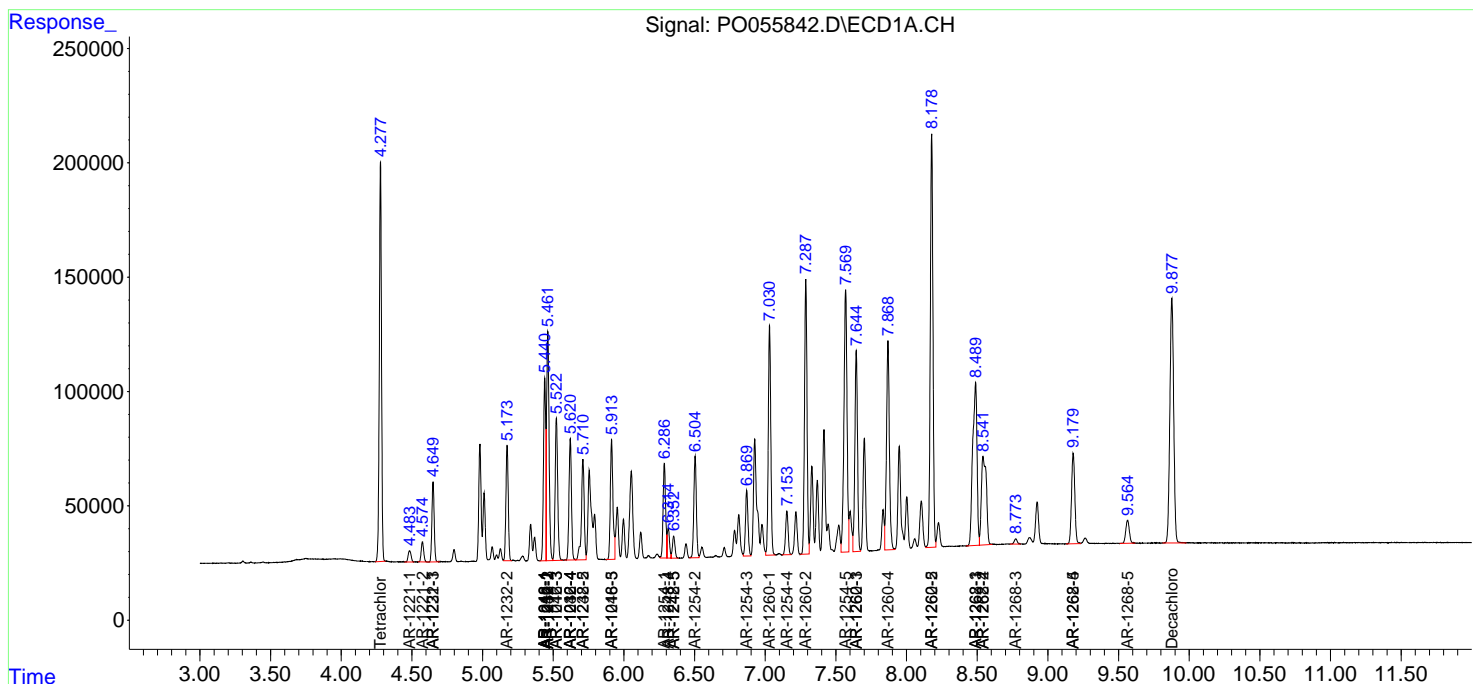
(f)=RT Delta > 1/2 Window (#)=Amounts differ by > 25% (m)=manual int.

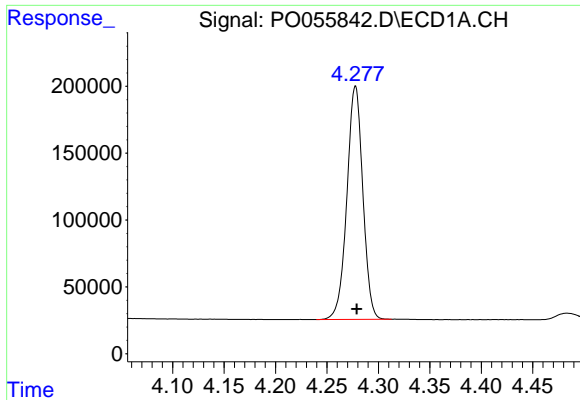
Data Path : Z:\pestpcbsrv\HPCHEM1\ECD_O\Data\PO050319\
 Data File : PO055842.D
 Signal(s) : Signal #1: ECD1A.CH Signal #2: ECD2B.CH
 Acq On : 03 May 2019 20:49
 Operator : SM/SJ
 Sample : AR1660CCC500
 Misc :
 ALS Vial : 3 Sample Multiplier: 1

Instrument :
 ECD_O
 ClientSampled :
 AR1660CCC500

Integration File signal 1: autoint1.e
 Integration File signal 2: autoint2.e
 Quant Time: May 03 22:59:27 2019
 Quant Method : Z:\pestpcbsrv\HPCHEM1\ECD_O\methods\PO050319.M
 Quant Title : GC EXTRACTABLES
 QLast Update : Fri May 03 15:20:04 2019
 Response via : Initial Calibration
 Integrator: ChemStation 6890 Scale Mode: Small noise peaks clipped

Volume Inj. : 2 µl
 Signal #1 Phase : ZB-MR1 Signal #2 Phase: ZB-MR2
 Signal #1 Info : 30Mx0.32mmx 0.50µ Signal #2 Info : 30M x 0.32mm x 0.25µm

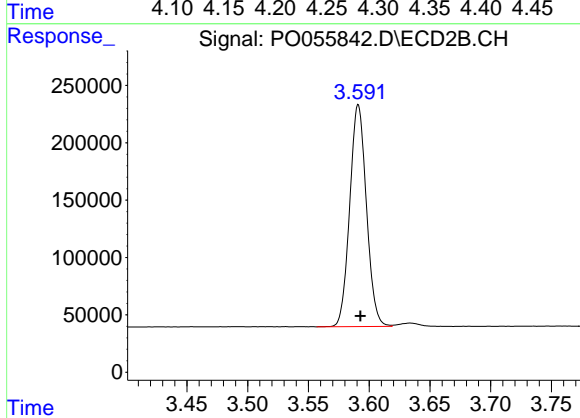




#1 Tetrachloro-m-xylene

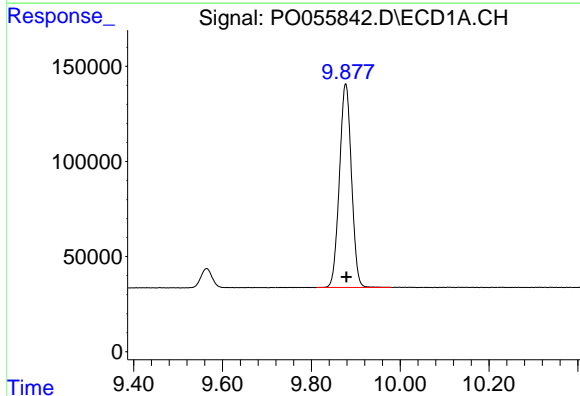
R.T.: 4.278 min
 Delta R.T.: -0.001 min
 Response: 1883406
 Conc: 62.94 ng/ml

Instrument :
 ECD_O
 ClientSampleId :
 AR1660CCC500



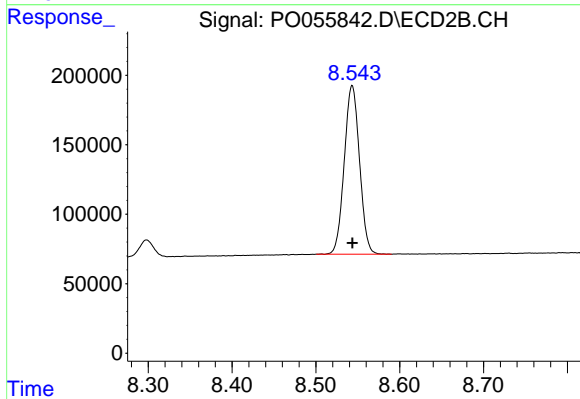
#1 Tetrachloro-m-xylene

R.T.: 3.591 min
 Delta R.T.: -0.002 min
 Response: 1849429
 Conc: 65.48 ng/ml



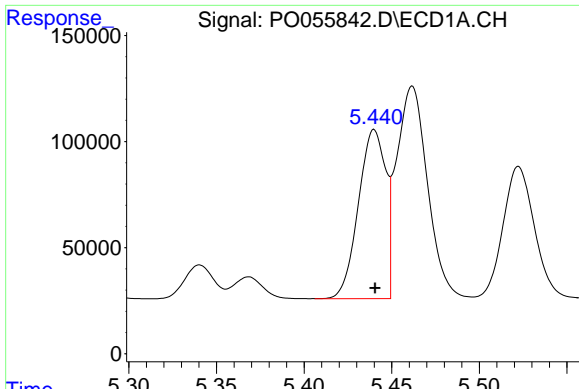
#2 Decachlorobiphenyl

R.T.: 9.877 min
 Delta R.T.: -0.002 min
 Response: 2014999
 Conc: 53.85 ng/ml



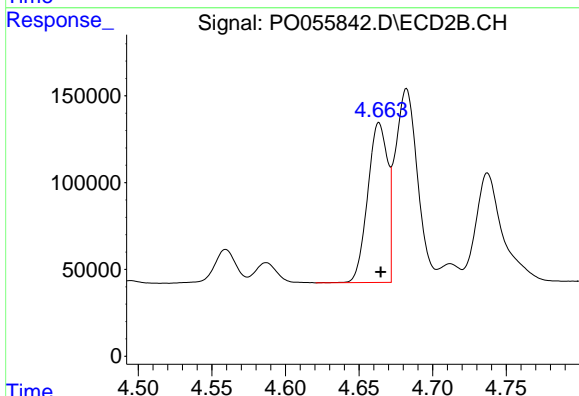
#2 Decachlorobiphenyl

R.T.: 8.543 min
 Delta R.T.: 0.000 min
 Response: 1534927
 Conc: 56.76 ng/ml

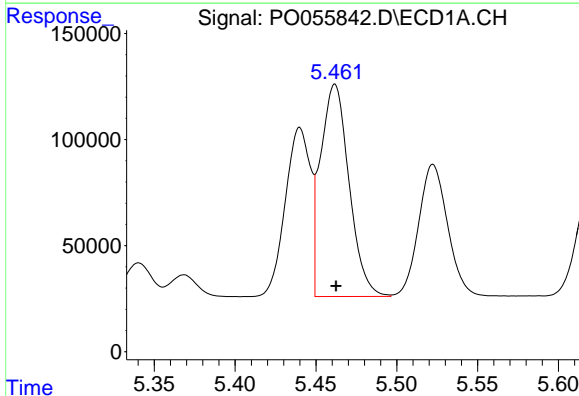


#3 AR-1016-1
 R.T.: 5.440 min
 Delta R.T.: 0.000 min
 Response: 863226
 Conc: 607.43 ng/ml

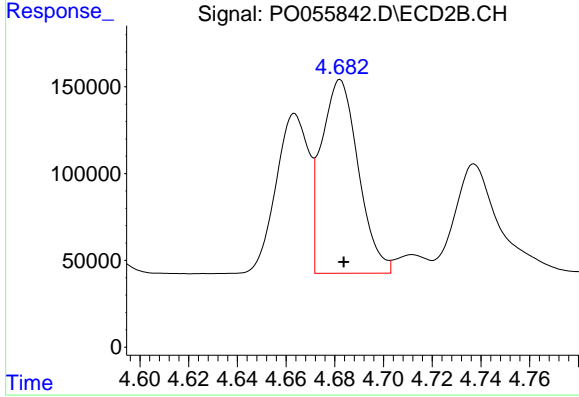
Instrument :
 ECD_O
 ClientSampleId :
 AR1660CCC500



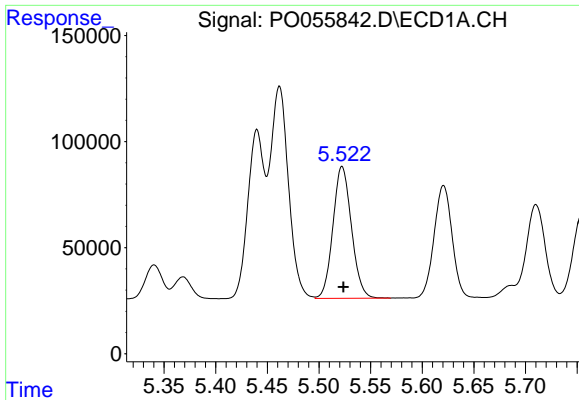
#3 AR-1016-1
 R.T.: 4.664 min
 Delta R.T.: -0.001 min
 Response: 861255
 Conc: 640.86 ng/ml



#4 AR-1016-2
 R.T.: 5.462 min
 Delta R.T.: 0.000 min
 Response: 1227169
 Conc: 620.14 ng/ml



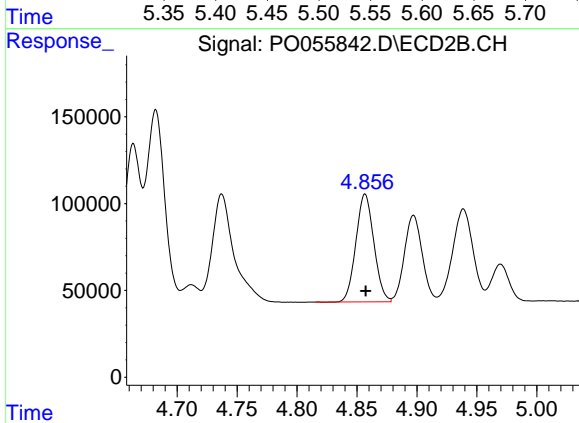
#4 AR-1016-2
 R.T.: 4.682 min
 Delta R.T.: -0.001 min
 Response: 1171395
 Conc: 641.53 ng/ml



#5 AR-1016-3

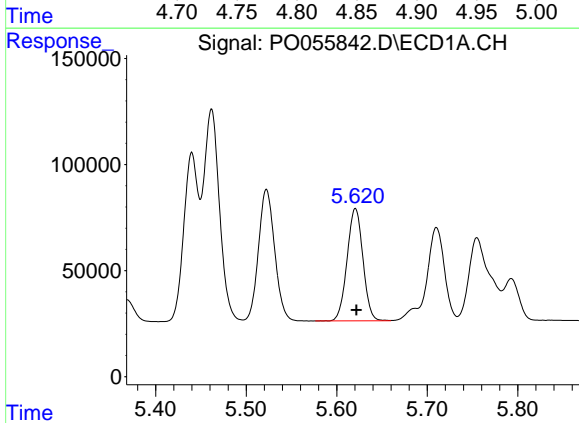
R.T.: 5.522 min
 Delta R.T.: -0.001 min
 Response: 774737
 Conc: 604.44 ng/ml

Instrument :
 ECD_O
 ClientSampleId :
 AR1660CCC500



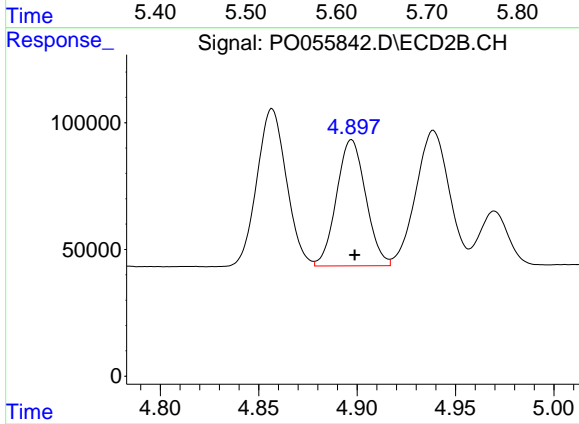
#5 AR-1016-3

R.T.: 4.857 min
 Delta R.T.: 0.000 min
 Response: 646440
 Conc: 645.07 ng/ml



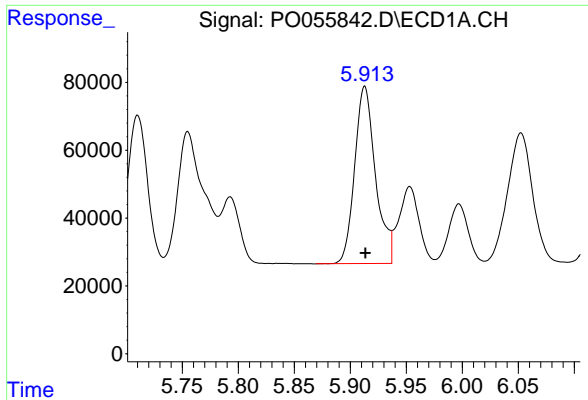
#6 AR-1016-4

R.T.: 5.621 min
 Delta R.T.: -0.001 min
 Response: 644389
 Conc: 616.51 ng/ml



#6 AR-1016-4

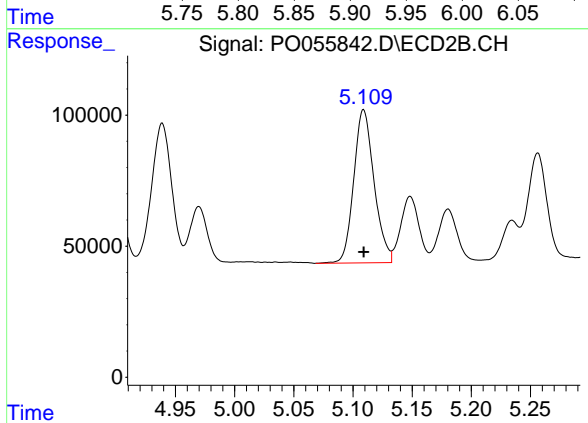
R.T.: 4.897 min
 Delta R.T.: -0.002 min
 Response: 513572
 Conc: 631.21 ng/ml



#7 AR-1016-5

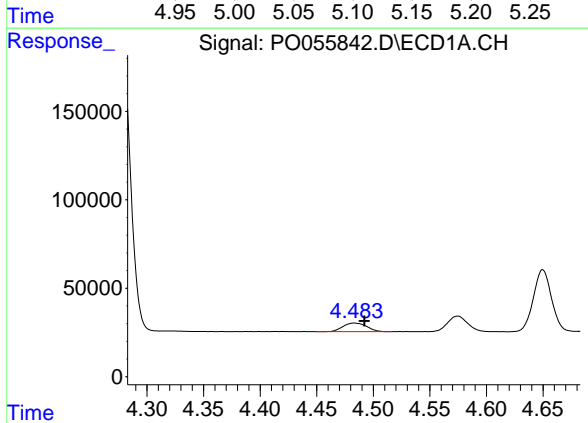
R.T.: 5.913 min
 Delta R.T.: 0.000 min
 Response: 675811
 Conc: 599.91 ng/ml

Instrument :
 ECD_O
 ClientSampleId :
 AR1660CCC500



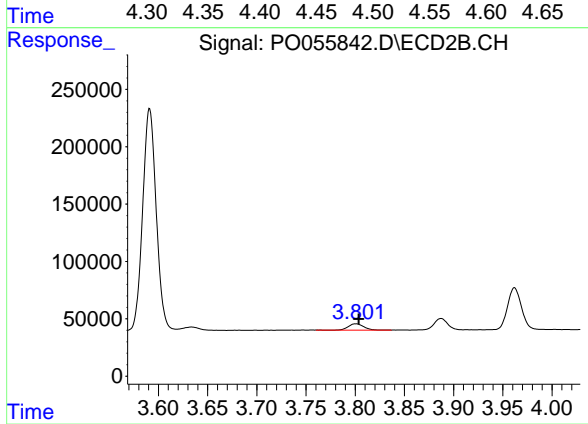
#7 AR-1016-5

R.T.: 5.109 min
 Delta R.T.: 0.000 min
 Response: 698329
 Conc: 634.35 ng/ml



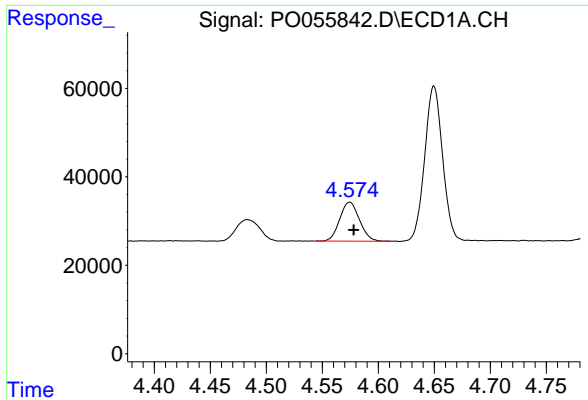
#8 AR-1221-1

R.T.: 4.483 min
 Delta R.T.: -0.009 min
 Response: 70491
 Conc: 162.14 ng/ml



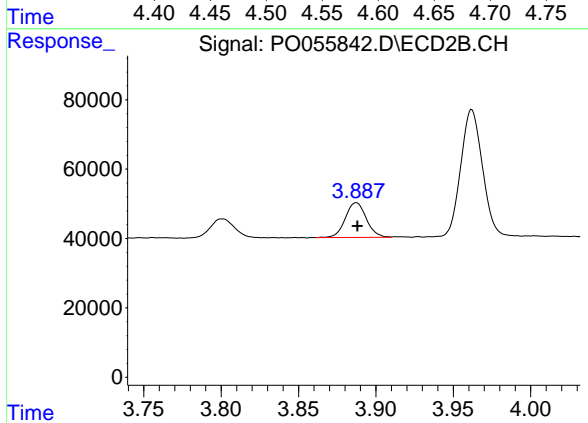
#8 AR-1221-1

R.T.: 3.801 min
 Delta R.T.: -0.002 min
 Response: 58788
 Conc: 160.13 ng/ml

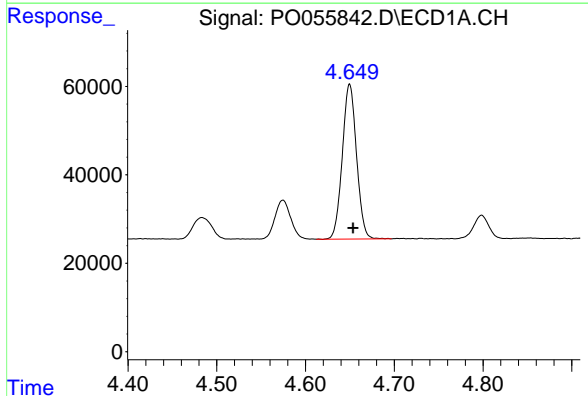


#9 AR-1221-2
 R.T.: 4.575 min
 Delta R.T.: -0.003 min
 Response: 107801
 Conc: 321.47 ng/ml

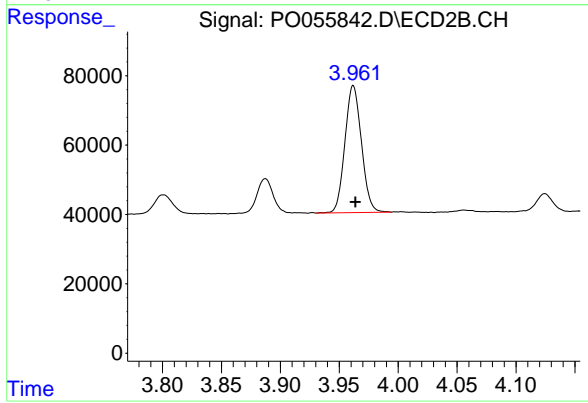
Instrument :
 ECD_O
ClientSampleId :
 AR1660CCC500



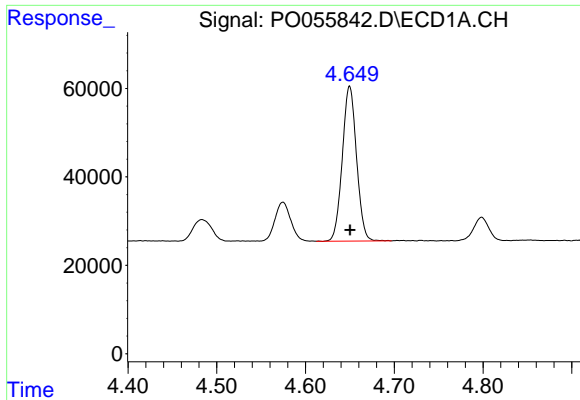
#9 AR-1221-2
 R.T.: 3.887 min
 Delta R.T.: 0.000 min
 Response: 94800
 Conc: 341.81 ng/ml



#10 AR-1221-3
 R.T.: 4.650 min
 Delta R.T.: -0.004 min
 Response: 389562
 Conc: 387.40 ng/ml



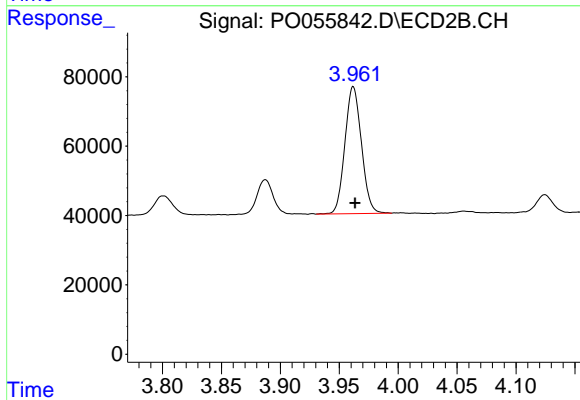
#10 AR-1221-3
 R.T.: 3.962 min
 Delta R.T.: -0.002 min
 Response: 357876
 Conc: 402.79 ng/ml



#11 AR-1232-1

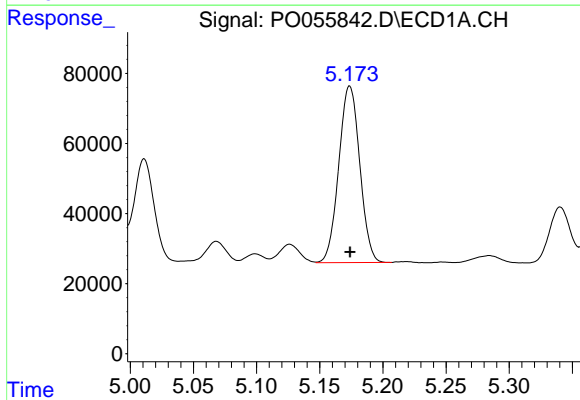
R.T.: 4.650 min
 Delta R.T.: 0.000 min
 Response: 389562
 Conc: 453.56 ng/ml

Instrument :
 ECD_O
 ClientSampleId :
 AR1660CCC500



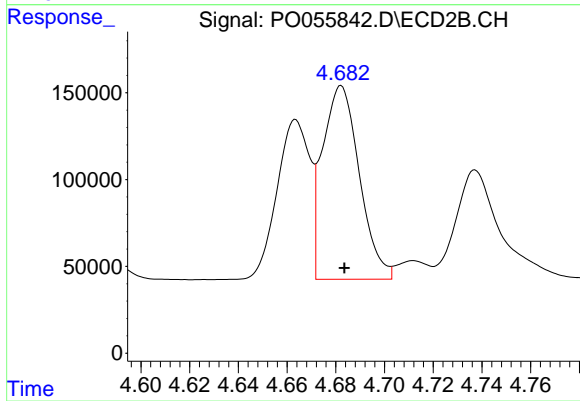
#11 AR-1232-1

R.T.: 3.962 min
 Delta R.T.: -0.002 min
 Response: 357876
 Conc: 483.57 ng/ml



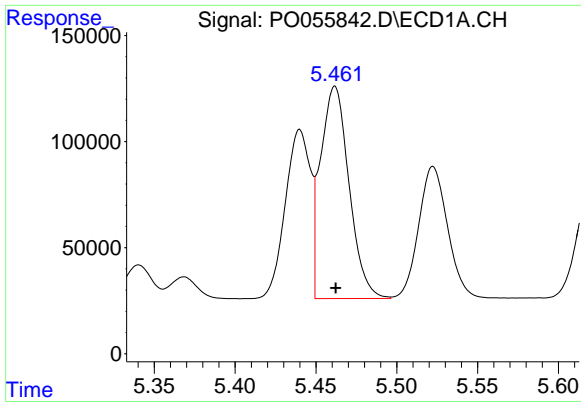
#12 AR-1232-2

R.T.: 5.174 min
 Delta R.T.: 0.000 min
 Response: 583269
 Conc: 1202.33 ng/ml



#12 AR-1232-2

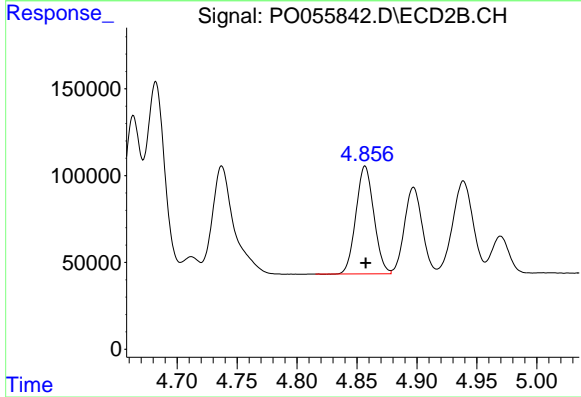
R.T.: 4.682 min
 Delta R.T.: -0.001 min
 Response: 1171395
 Conc: 1336.52 ng/ml



#13 AR-1232-3

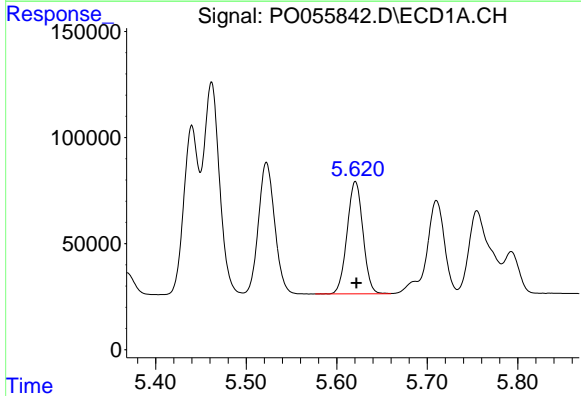
R.T.: 5.462 min
 Delta R.T.: 0.000 min
 Response: 1227169
 Conc: 1268.41 ng/ml

Instrument :
 ECD_O
 ClientSampleId :
 AR1660CCC500



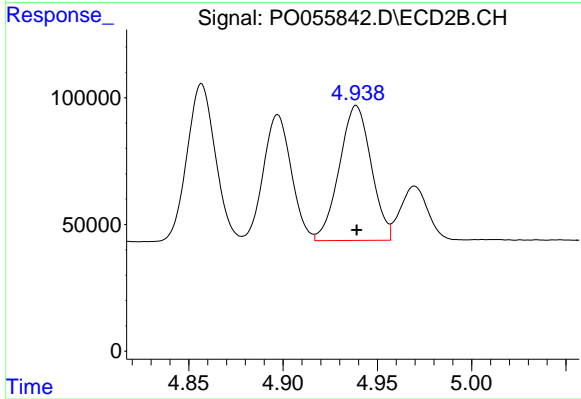
#13 AR-1232-3

R.T.: 4.857 min
 Delta R.T.: 0.000 min
 Response: 646440
 Conc: 1347.68 ng/ml



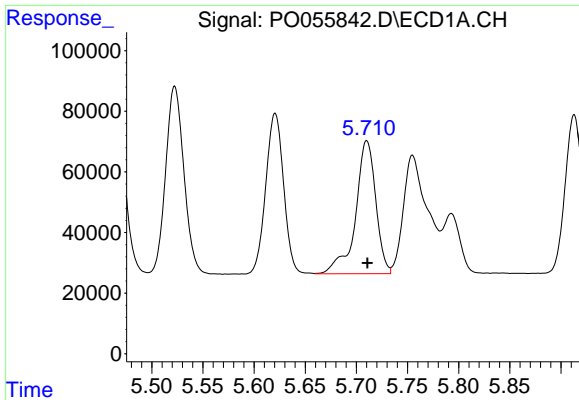
#14 AR-1232-4

R.T.: 5.621 min
 Delta R.T.: 0.000 min
 Response: 644389
 Conc: 1267.14 ng/ml



#14 AR-1232-4

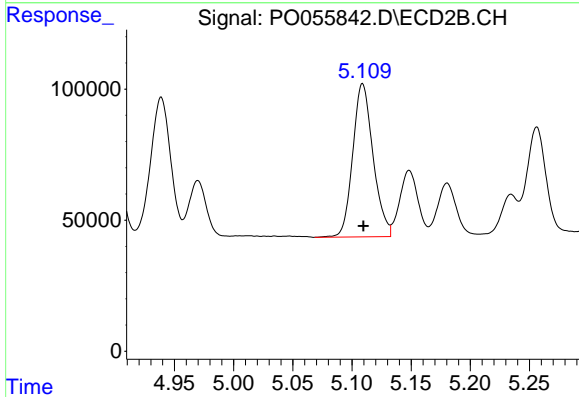
R.T.: 4.939 min
 Delta R.T.: 0.000 min
 Response: 626032
 Conc: 1473.84 ng/ml



#15 AR-1232-5

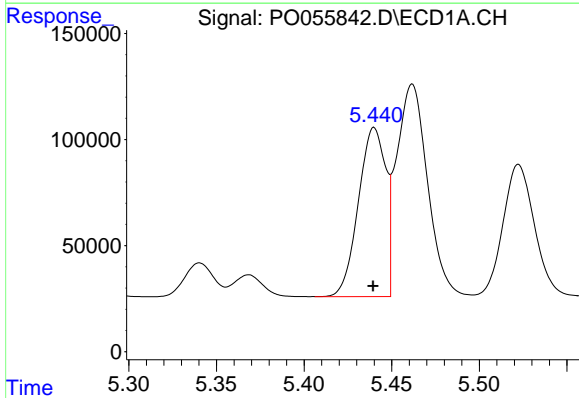
R.T.: 5.710 min
 Delta R.T.: 0.000 min
 Response: 604460
 Conc: 1392.21 ng/ml

Instrument :
 ECD_O
 ClientSampleId :
 AR1660CCC500



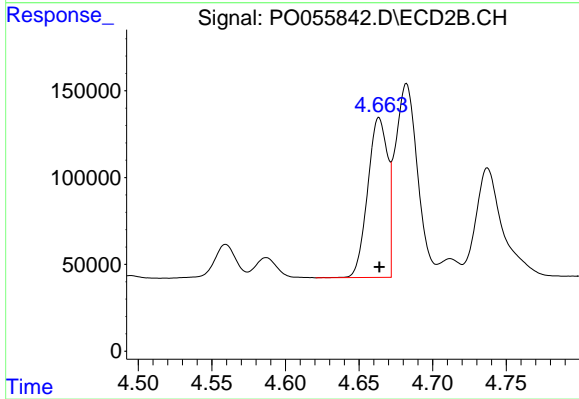
#15 AR-1232-5

R.T.: 5.109 min
 Delta R.T.: 0.000 min
 Response: 698329
 Conc: 1441.02 ng/ml



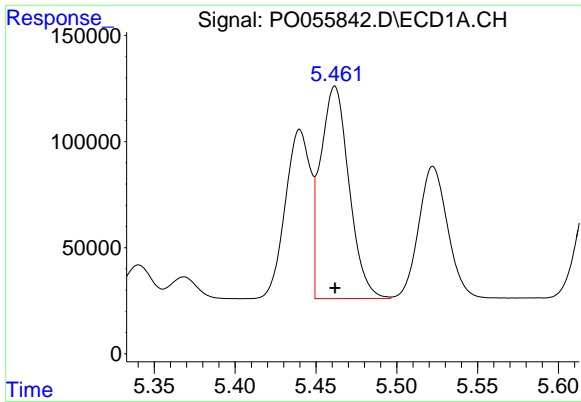
#16 AR-1242-1

R.T.: 5.440 min
 Delta R.T.: 0.000 min
 Response: 863226
 Conc: 712.94 ng/ml



#16 AR-1242-1

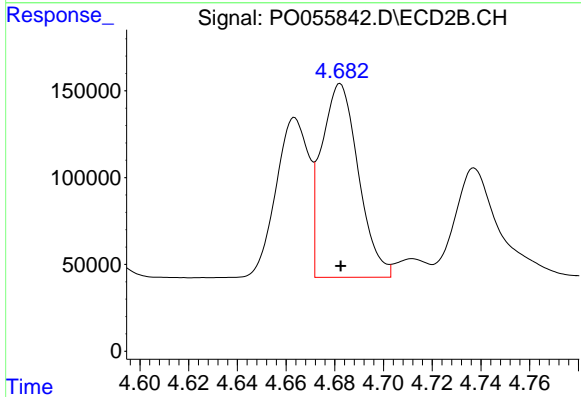
R.T.: 4.664 min
 Delta R.T.: 0.000 min
 Response: 861255
 Conc: 768.55 ng/ml



#17 AR-1242-2

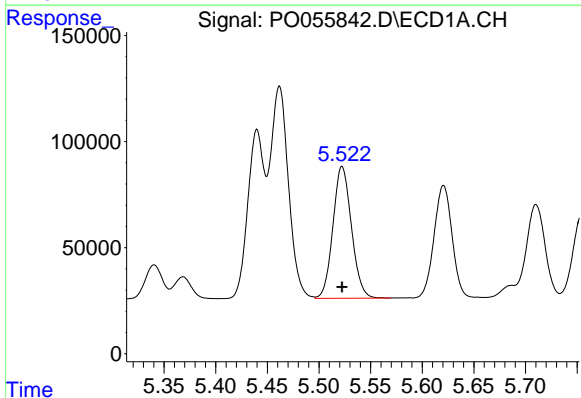
R.T.: 5.462 min
 Delta R.T.: 0.000 min
 Response: 1227169
 Conc: 726.83 ng/ml

Instrument :
 ECD_O
 ClientSampled :
 AR1660CCC500



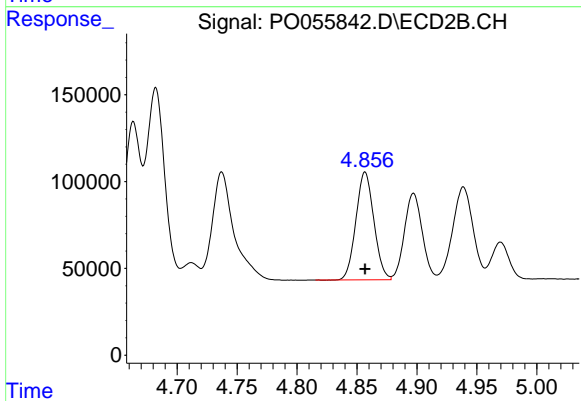
#17 AR-1242-2

R.T.: 4.682 min
 Delta R.T.: 0.000 min
 Response: 1171395
 Conc: 769.92 ng/ml



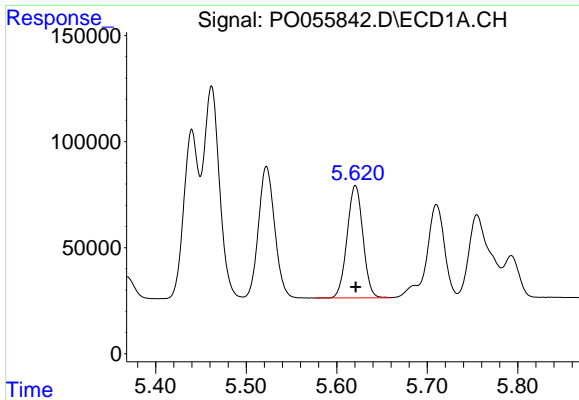
#18 AR-1242-3

R.T.: 5.522 min
 Delta R.T.: 0.000 min
 Response: 774737
 Conc: 707.17 ng/ml



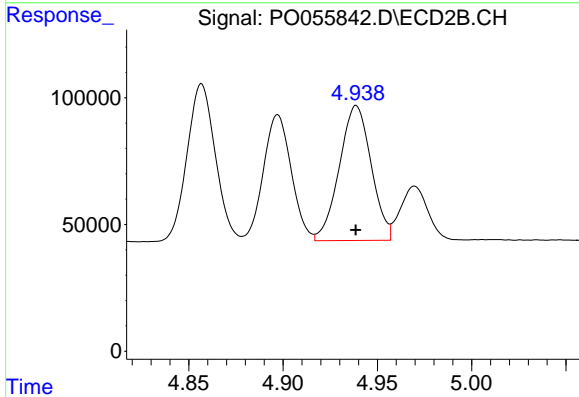
#18 AR-1242-3

R.T.: 4.857 min
 Delta R.T.: 0.000 min
 Response: 646440
 Conc: 746.45 ng/ml

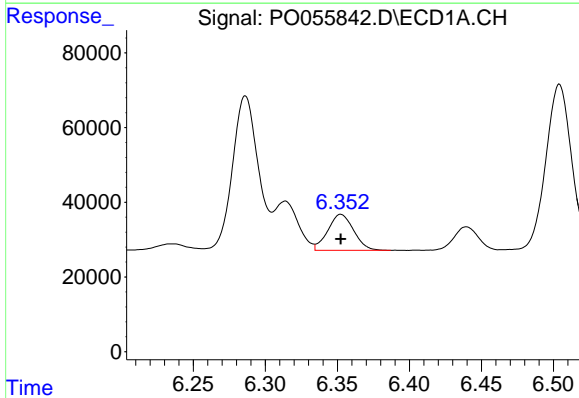


#19 AR-1242-4
 R.T.: 5.621 min
 Delta R.T.: 0.000 min
 Response: 644389
 Conc: 716.13 ng/ml

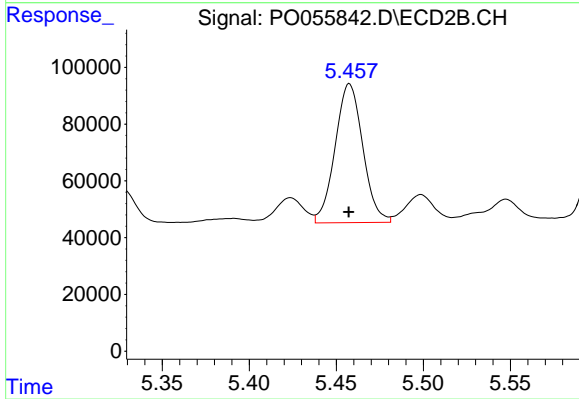
Instrument :
 ECD_O
 ClientSampled :
 AR1660CCC500



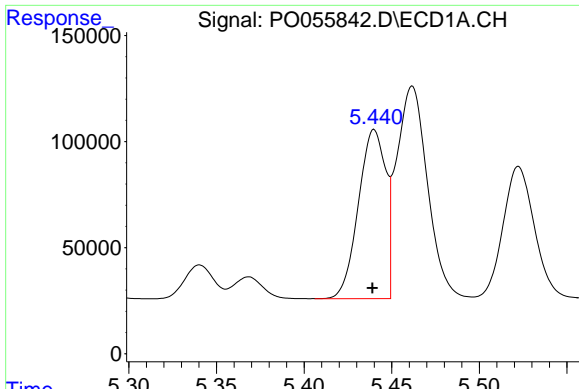
#19 AR-1242-4
 R.T.: 4.939 min
 Delta R.T.: 0.000 min
 Response: 626032
 Conc: 747.32 ng/ml



#20 AR-1242-5
 R.T.: 6.352 min
 Delta R.T.: 0.000 min
 Response: 120127
 Conc: 109.81 ng/ml

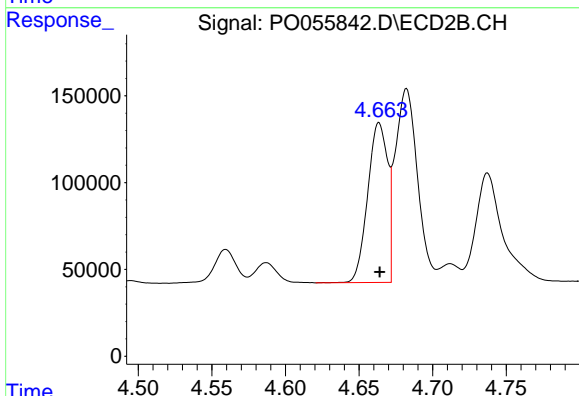


#20 AR-1242-5
 R.T.: 5.458 min
 Delta R.T.: 0.000 min
 Response: 542714
 Conc: 452.11 ng/ml

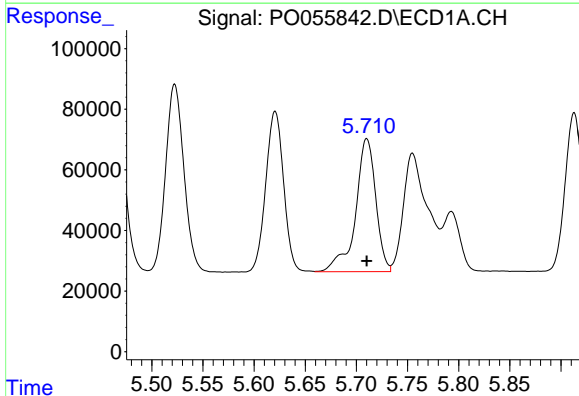


#21 AR-1248-1
 R.T.: 5.440 min
 Delta R.T.: 0.000 min
 Response: 863226
 Conc: 953.71 ng/ml

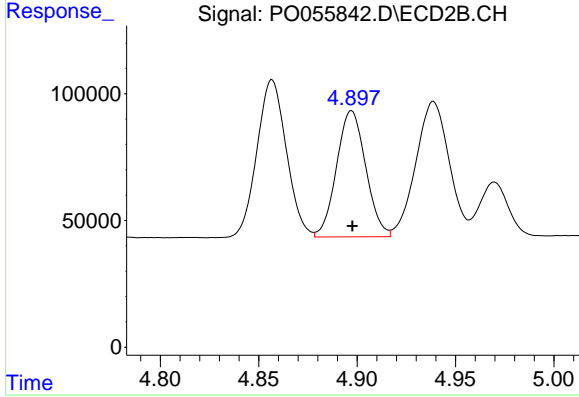
Instrument :
 ECD_O
 ClientSampleId :
 AR1660CCC500



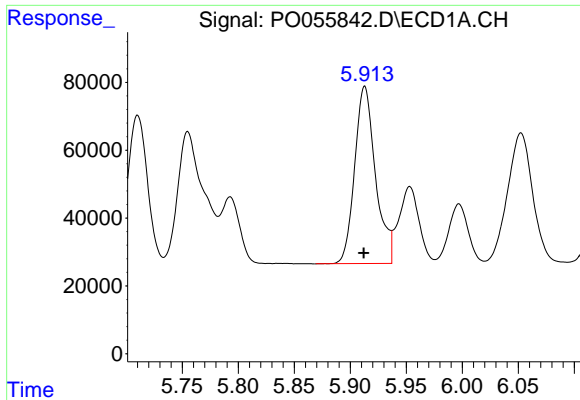
#21 AR-1248-1
 R.T.: 4.664 min
 Delta R.T.: 0.000 min
 Response: 861255
 Conc: 1027.10 ng/ml



#22 AR-1248-2
 R.T.: 5.710 min
 Delta R.T.: 0.000 min
 Response: 604460
 Conc: 453.25 ng/ml



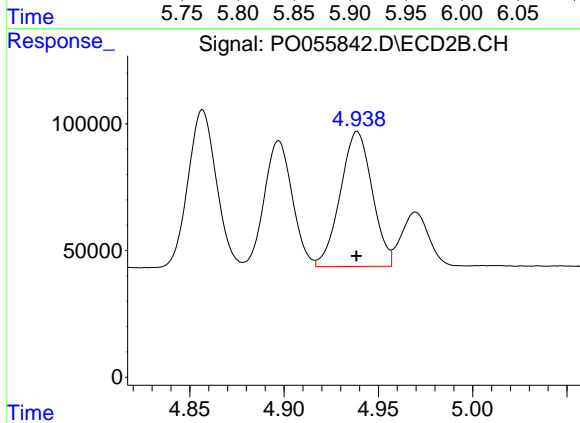
#22 AR-1248-2
 R.T.: 4.897 min
 Delta R.T.: 0.000 min
 Response: 513572
 Conc: 467.41 ng/ml



#23 AR-1248-3

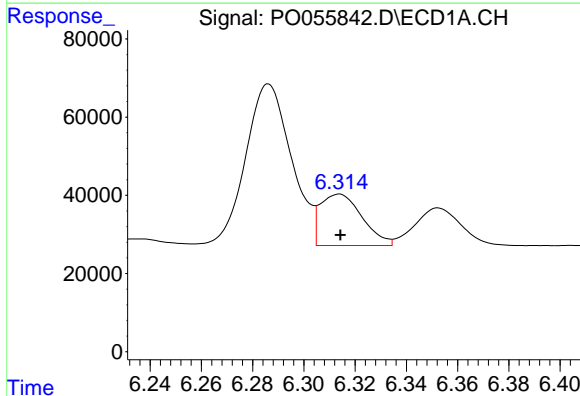
R.T.: 5.913 min
 Delta R.T.: 0.000 min
 Response: 675811
 Conc: 457.64 ng/ml

Instrument :
 ECD_O
 ClientSampleId :
 AR1660CCC500



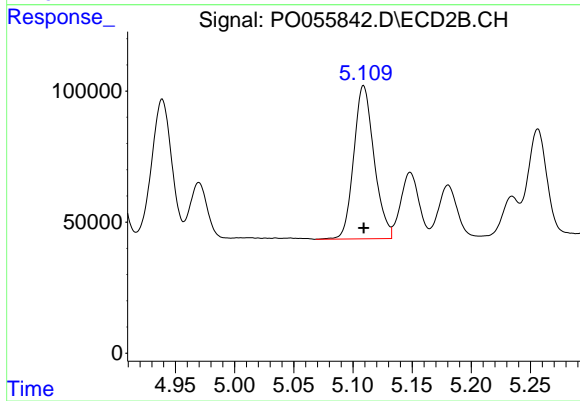
#23 AR-1248-3

R.T.: 4.939 min
 Delta R.T.: 0.000 min
 Response: 626032
 Conc: 551.50 ng/ml



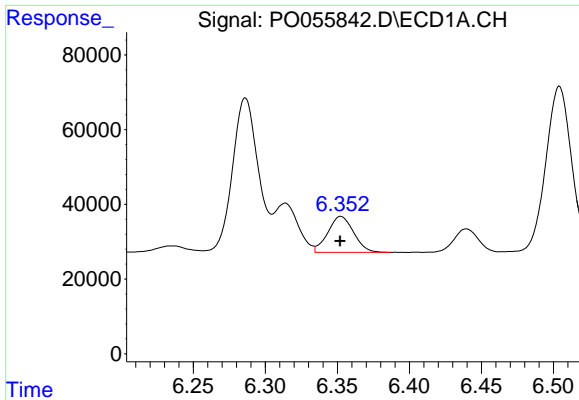
#24 AR-1248-4

R.T.: 6.314 min
 Delta R.T.: 0.000 min
 Response: 148979
 Conc: 85.44 ng/ml



#24 AR-1248-4

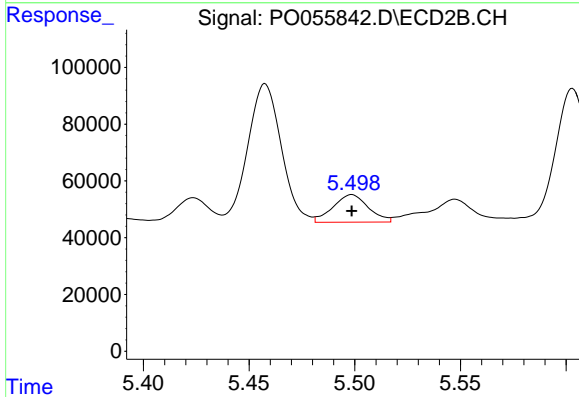
R.T.: 5.109 min
 Delta R.T.: 0.000 min
 Response: 698329
 Conc: 497.32 ng/ml



#25 AR-1248-5

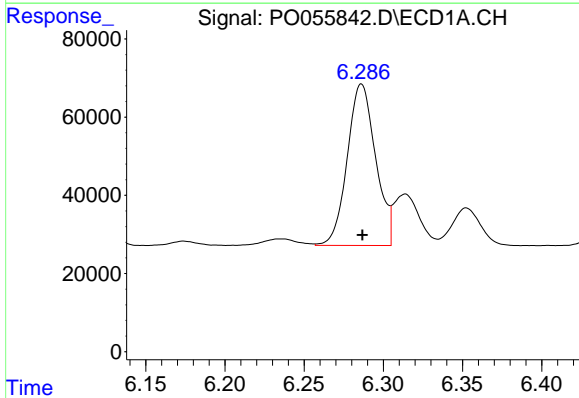
R.T.: 6.352 min
Delta R.T.: 0.000 min
Response: 120127
Conc: 71.92 ng/ml

Instrument :
ECD_O
ClientSampleId :
AR1660CCC500



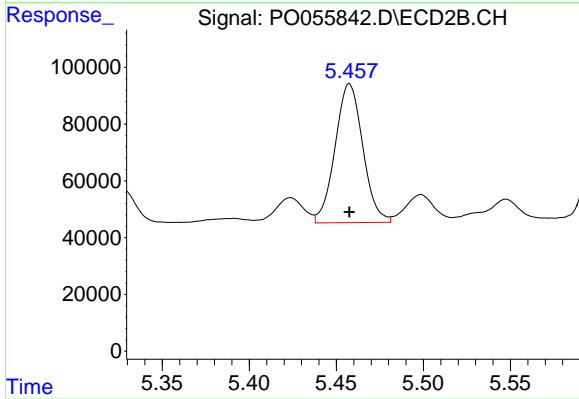
#25 AR-1248-5

R.T.: 5.499 min
Delta R.T.: 0.000 min
Response: 113033
Conc: 75.47 ng/ml



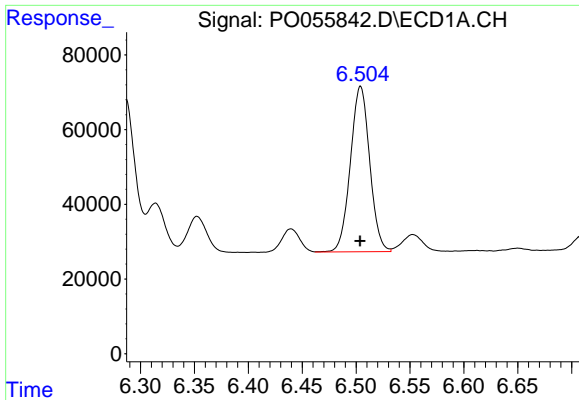
#26 AR-1254-1

R.T.: 6.286 min
Delta R.T.: 0.000 min
Response: 513898
Conc: 244.73 ng/ml



#26 AR-1254-1

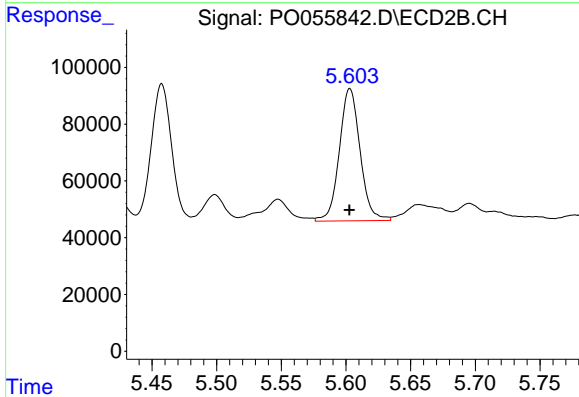
R.T.: 5.458 min
Delta R.T.: 0.000 min
Response: 542714
Conc: 202.78 ng/ml



#27 AR-1254-2

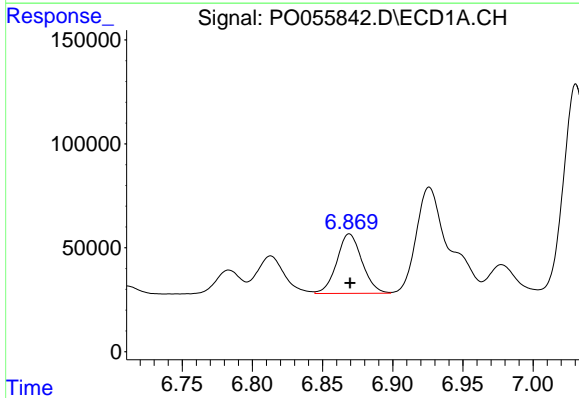
R.T.: 6.504 min
 Delta R.T.: 0.000 min
 Response: 551902
 Conc: 166.29 ng/ml

Instrument :
 ECD_O
 ClientSampleId :
 AR1660CCC500



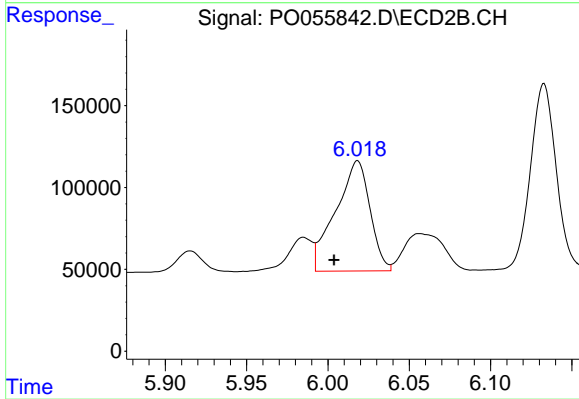
#27 AR-1254-2

R.T.: 5.603 min
 Delta R.T.: 0.000 min
 Response: 520699
 Conc: 213.17 ng/ml



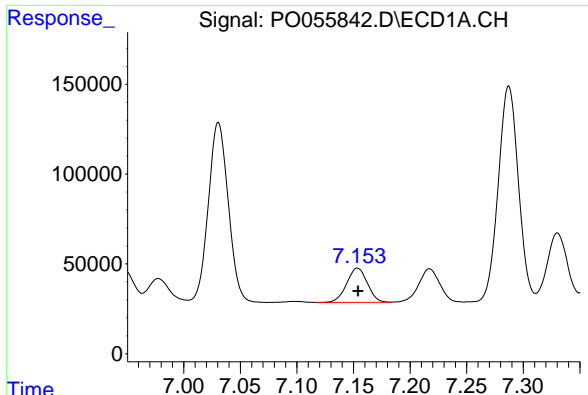
#28 AR-1254-3

R.T.: 6.869 min
 Delta R.T.: 0.000 min
 Response: 358486
 Conc: 98.61 ng/ml



#28 AR-1254-3

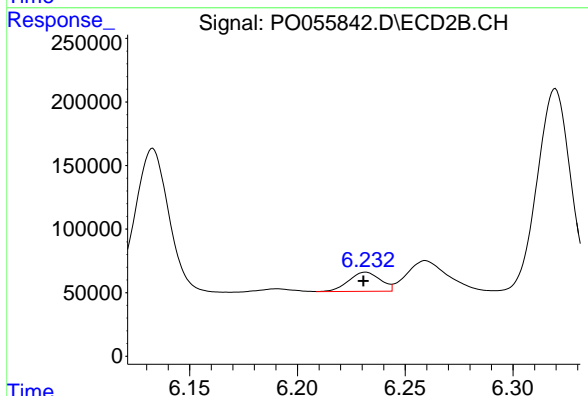
R.T.: 6.018 min
 Delta R.T.: 0.014 min
 Response: 989776
 Conc: 249.46 ng/ml



#29 AR-1254-4

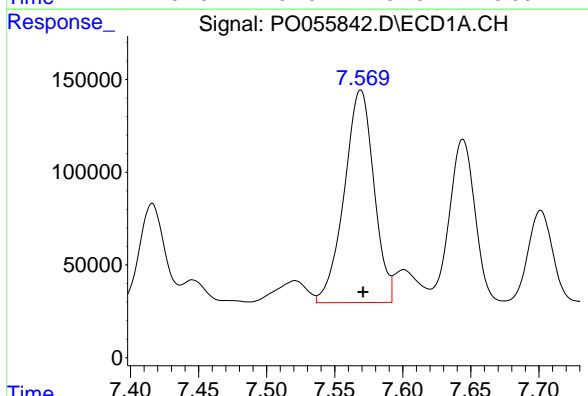
R.T.: 7.153 min
 Delta R.T.: 0.000 min
 Response: 241230
 Conc: 88.66 ng/ml

Instrument :
 ECD_O
 ClientSampleId :
 AR1660CCC500



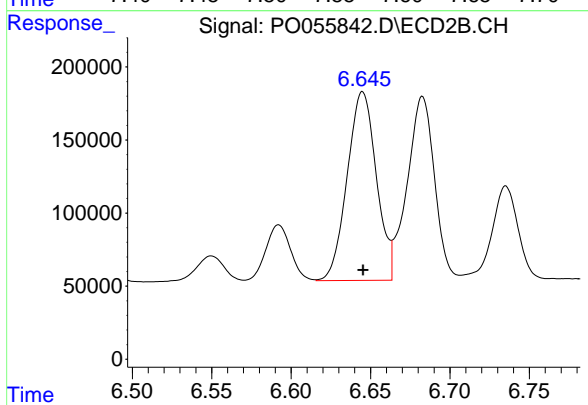
#29 AR-1254-4

R.T.: 6.232 min
 Delta R.T.: 0.001 min
 Response: 154453
 Conc: 57.61 ng/ml



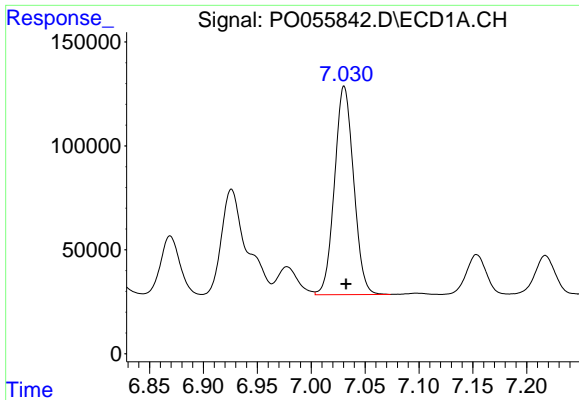
#30 AR-1254-5

R.T.: 7.569 min
 Delta R.T.: -0.002 min
 Response: 1738294
 Conc: 606.50 ng/ml



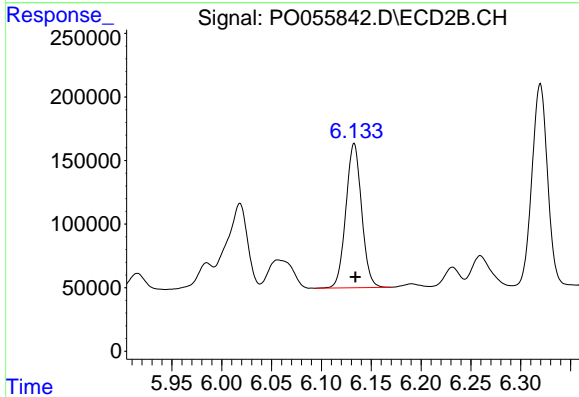
#30 AR-1254-5

R.T.: 6.645 min
 Delta R.T.: 0.000 min
 Response: 1652085
 Conc: 456.54 ng/ml

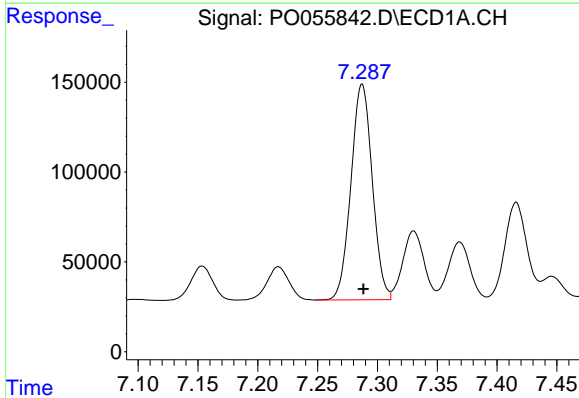


#31 AR-1260-1
 R.T.: 7.031 min
 Delta R.T.: -0.002 min
 Response: 1235767
 Conc: 572.25 ng/ml

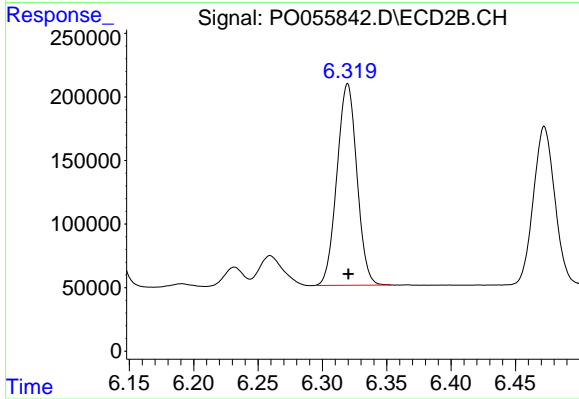
Instrument :
 ECD_O
 ClientSampleId :
 AR1660CCC500



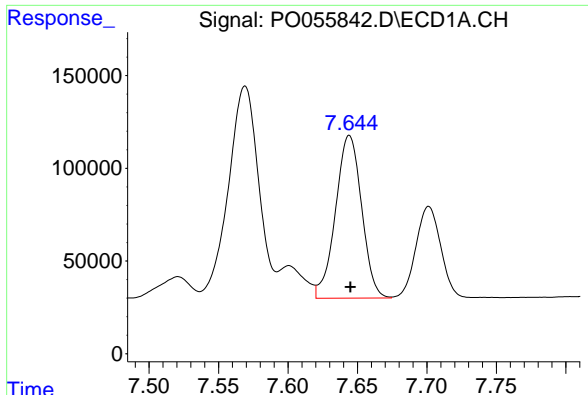
#31 AR-1260-1
 R.T.: 6.133 min
 Delta R.T.: -0.001 min
 Response: 1246509
 Conc: 565.78 ng/ml



#32 AR-1260-2
 R.T.: 7.287 min
 Delta R.T.: -0.001 min
 Response: 1491438
 Conc: 569.49 ng/ml



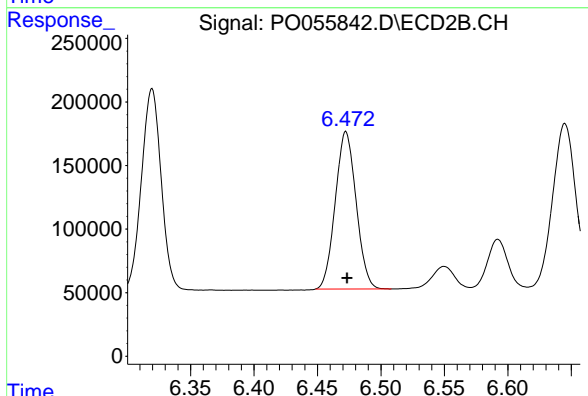
#32 AR-1260-2
 R.T.: 6.320 min
 Delta R.T.: 0.000 min
 Response: 1712268
 Conc: 560.74 ng/ml



#33 AR-1260-3

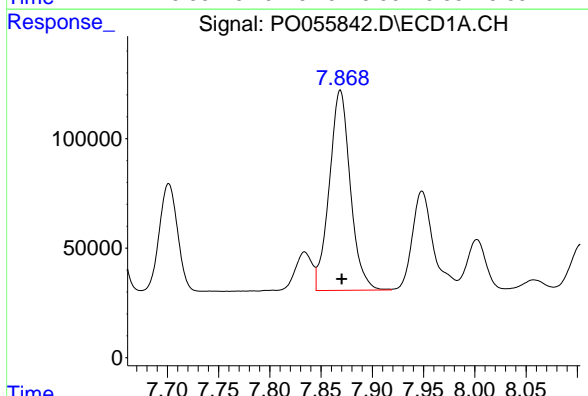
R.T.: 7.644 min
 Delta R.T.: 0.000 min
 Response: 1148012
 Conc: 574.01 ng/ml

Instrument :
 ECD_O
 ClientSampleId :
 AR1660CCC500



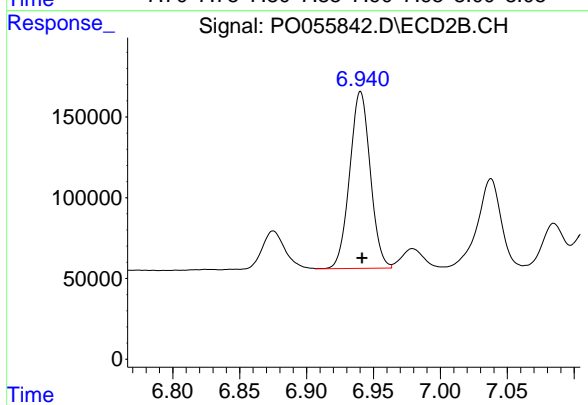
#33 AR-1260-3

R.T.: 6.472 min
 Delta R.T.: 0.000 min
 Response: 1416009
 Conc: 568.22 ng/ml



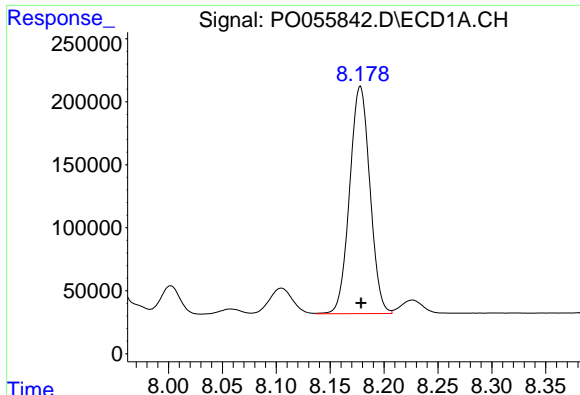
#34 AR-1260-4

R.T.: 7.869 min
 Delta R.T.: -0.001 min
 Response: 1303649
 Conc: 563.71 ng/ml



#34 AR-1260-4

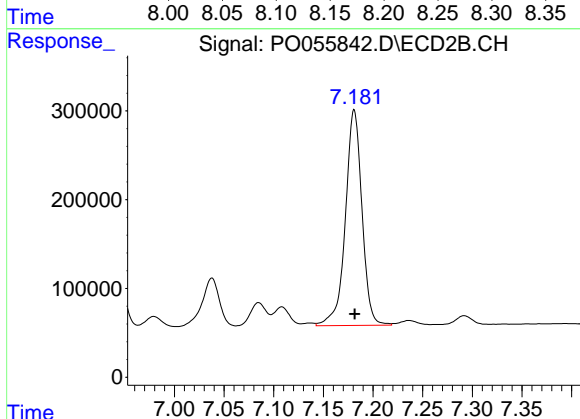
R.T.: 6.940 min
 Delta R.T.: -0.001 min
 Response: 1176299
 Conc: 570.06 ng/ml



#35 AR-1260-5

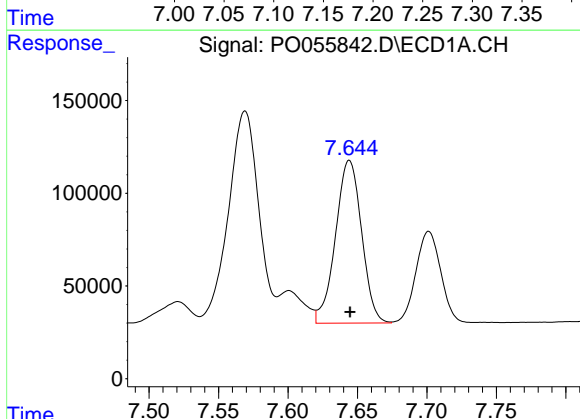
R.T.: 8.178 min
 Delta R.T.: 0.000 min
 Response: 2363574
 Conc: 557.14 ng/ml

Instrument :
 ECD_O
 ClientSampleId :
 AR1660CCC500



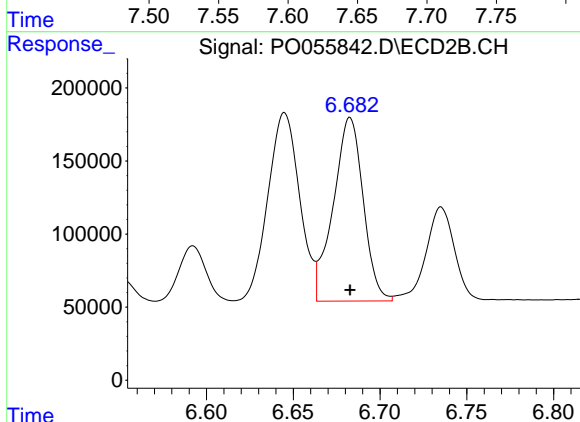
#35 AR-1260-5

R.T.: 7.181 min
 Delta R.T.: 0.000 min
 Response: 2827992
 Conc: 563.09 ng/ml



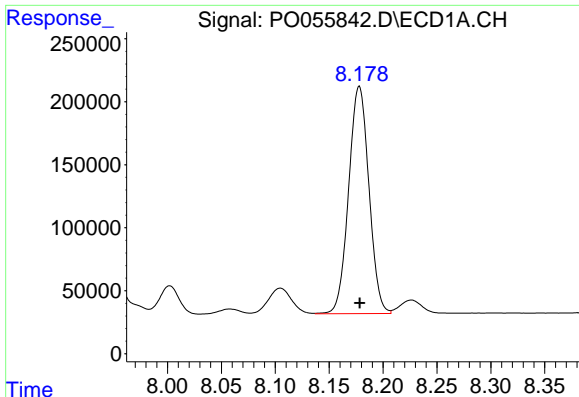
#36 AR-1262-1

R.T.: 7.644 min
 Delta R.T.: 0.000 min
 Response: 1148012
 Conc: 358.10 ng/ml



#36 AR-1262-1

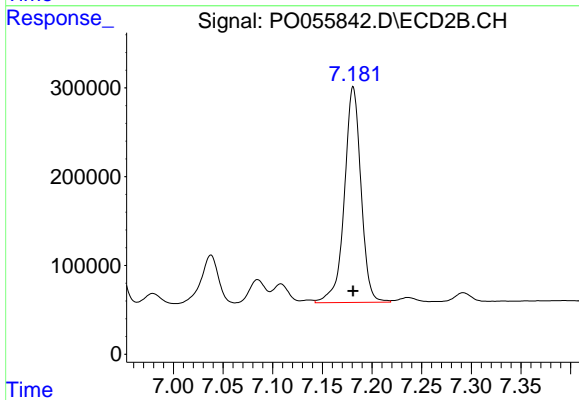
R.T.: 6.683 min
 Delta R.T.: 0.000 min
 Response: 1509471
 Conc: 368.09 ng/ml



#37 AR-1262-2

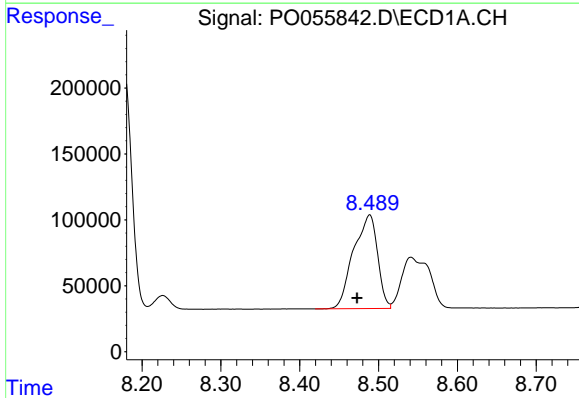
R.T.: 8.178 min
 Delta R.T.: 0.000 min
 Response: 2363574
 Conc: 440.25 ng/ml

Instrument :
 ECD_O
 ClientSampled :
 AR1660CCC500



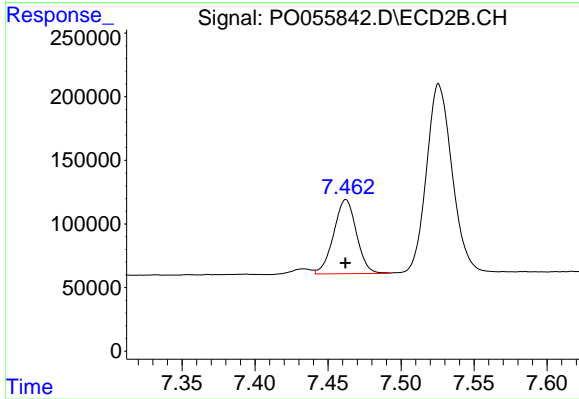
#37 AR-1262-2

R.T.: 7.181 min
 Delta R.T.: 0.000 min
 Response: 2827992
 Conc: 452.27 ng/ml



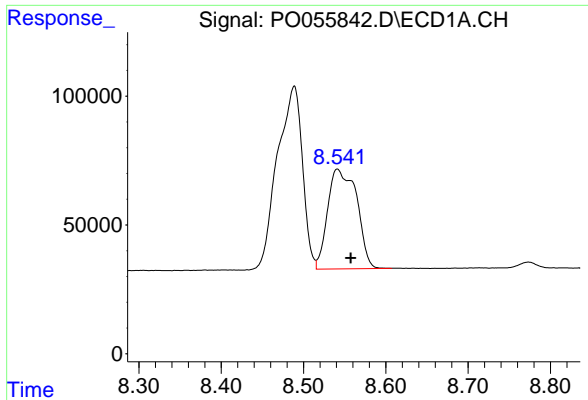
#38 AR-1262-3

R.T.: 8.489 min
 Delta R.T.: 0.016 min
 Response: 1505139
 Conc: 414.77 ng/ml



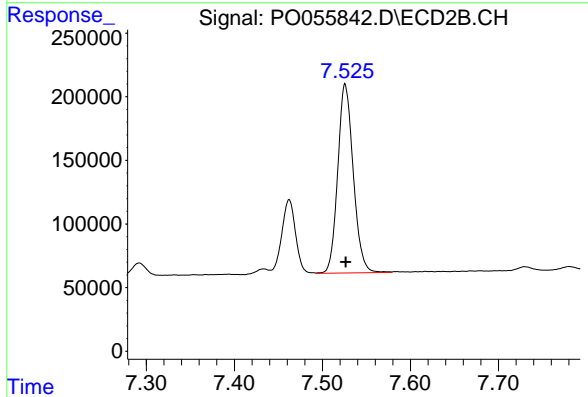
#38 AR-1262-3

R.T.: 7.462 min
 Delta R.T.: 0.000 min
 Response: 635058
 Conc: 257.84 ng/ml

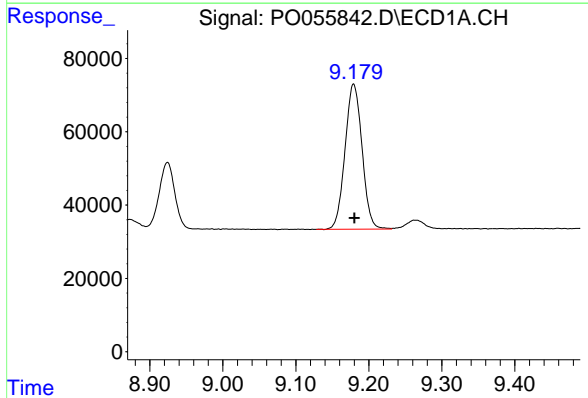


#39 AR-1262-4
 R.T.: 8.541 min
 Delta R.T.: -0.017 min
 Response: 951754
 Conc: 350.54 ng/ml

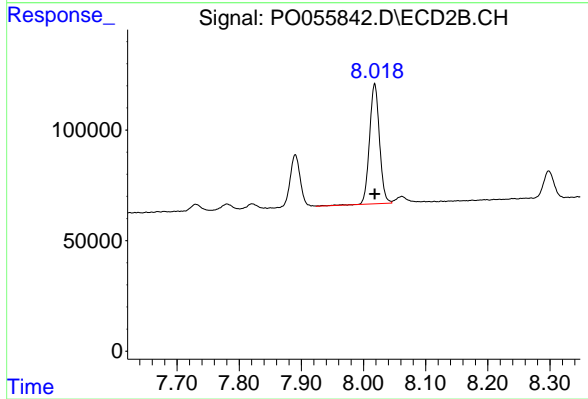
Instrument :
 ECD_O
 ClientSampleId :
 AR1660CCC500



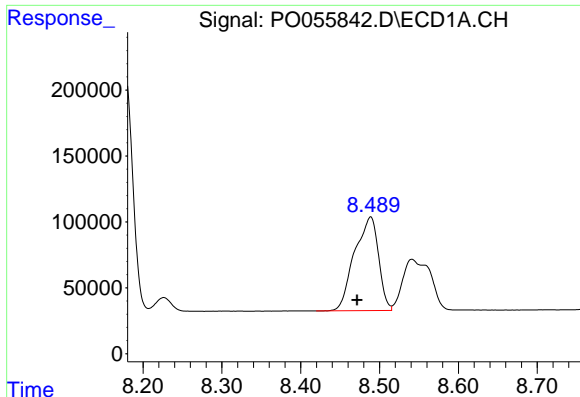
#39 AR-1262-4
 R.T.: 7.526 min
 Delta R.T.: 0.000 min
 Response: 1821615
 Conc: 444.84 ng/ml



#40 AR-1262-5
 R.T.: 9.179 min
 Delta R.T.: -0.001 min
 Response: 639795
 Conc: 354.16 ng/ml



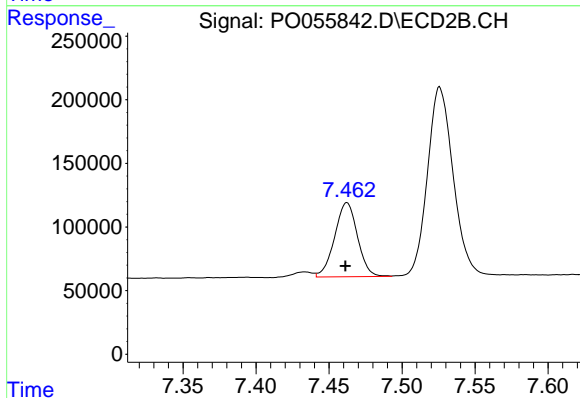
#40 AR-1262-5
 R.T.: 8.018 min
 Delta R.T.: 0.000 min
 Response: 605149
 Conc: 355.11 ng/ml



#41 AR-1268-1

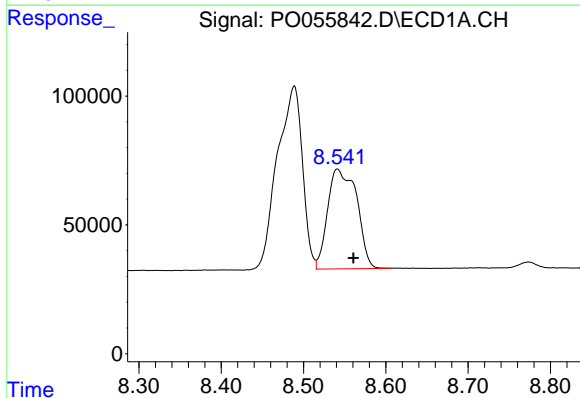
R.T.: 8.489 min
 Delta R.T.: 0.018 min
 Response: 1505139
 Conc: 249.24 ng/ml

Instrument :
 ECD_O
 ClientSampleId :
 AR1660CCC500



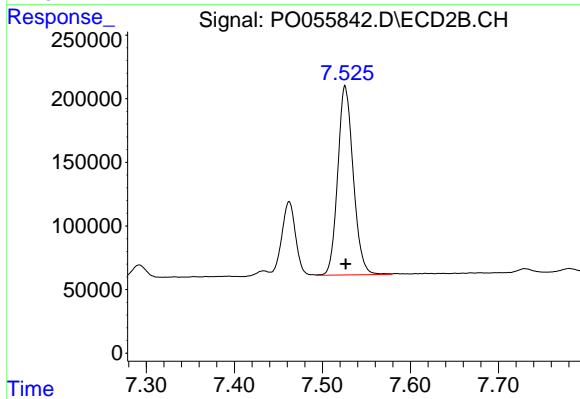
#41 AR-1268-1

R.T.: 7.462 min
 Delta R.T.: 0.001 min
 Response: 635058
 Conc: 91.66 ng/ml



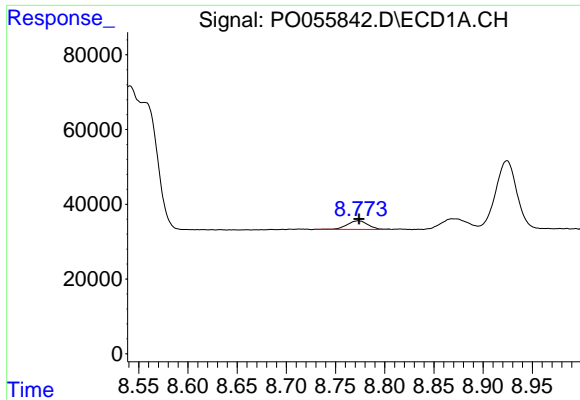
#42 AR-1268-2

R.T.: 8.541 min
 Delta R.T.: -0.020 min
 Response: 951754
 Conc: 173.88 ng/ml



#42 AR-1268-2

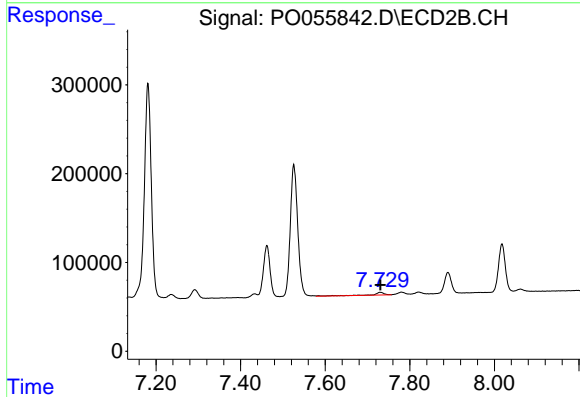
R.T.: 7.526 min
 Delta R.T.: 0.000 min
 Response: 1821615
 Conc: 320.19 ng/ml



#43 AR-1268-3

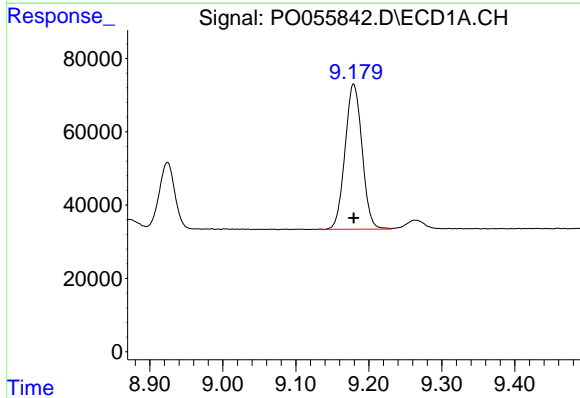
R.T.: 8.773 min
 Delta R.T.: 0.000 min
 Response: 33964
 Conc: 7.53 ng/ml

Instrument :
 ECD_O
ClientSampleId :
 AR1660CCC500



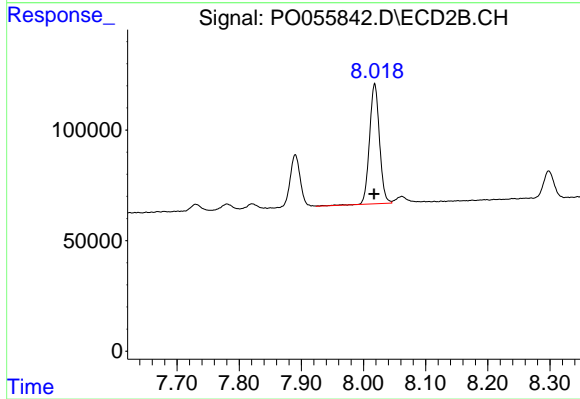
#43 AR-1268-3

R.T.: 7.730 min
 Delta R.T.: 0.000 min
 Response: 46937
 Conc: 9.94 ng/ml



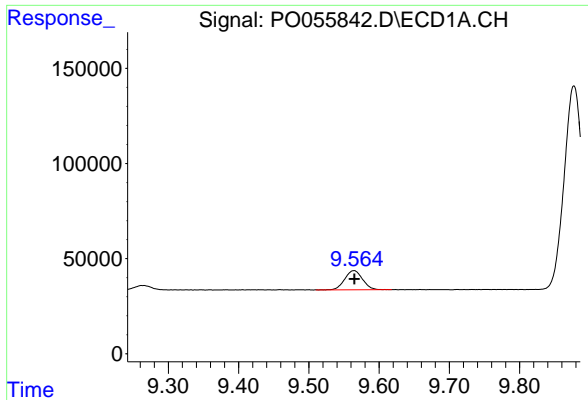
#44 AR-1268-4

R.T.: 9.179 min
 Delta R.T.: 0.000 min
 Response: 639795
 Conc: 326.06 ng/ml



#44 AR-1268-4

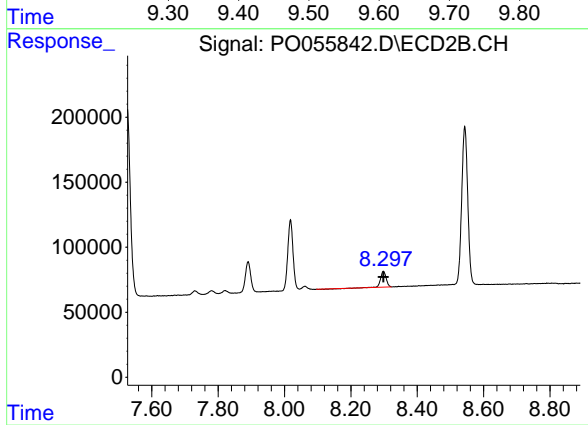
R.T.: 8.018 min
 Delta R.T.: 0.000 min
 Response: 605149
 Conc: 319.90 ng/ml



#45 AR-1268-5

R.T.: 9.564 min
Delta R.T.: 0.000 min
Response: 177746
Conc: 13.17 ng/ml

Instrument :
ECD_O
ClientSampleId :
AR1660CCC500



#45 AR-1268-5

R.T.: 8.298 min
Delta R.T.: 0.000 min
Response: 141822
Conc: 11.65 ng/ml