

Data Path : Z:\pestpcbsrv\HPCHEM1\ECD_0\Data\P0050319\
 Data File : P0055845.D
 Signal(s) : Signal #1: ECD1A.CH Signal #2: ECD2B.CH
 Acq On : 03 May 2019 21:39
 Operator : SM/SJ
 Sample : K2627-01MSD
 Misc :
 ALS Vial : 13 Sample Multiplier: 1

Instrument :
 ECD_0
 ClientSampleId :
 WC-1MSD

Integration File signal 1: autoint1.e
 Integration File signal 2: autoint2.e
 Quant Time: May 03 23:01:04 2019
 Quant Method : Z:\pestpcbsrv\HPCHEM1\ECD_0\methods\P0050319.M
 Quant Title : GC EXTRACTABLES
 QLast Update : Fri May 03 15:20:04 2019
 Response via : Initial Calibration
 Integrator: ChemStation 6890 Scale Mode: Small noise peaks clipped

Volume Inj. : 2 µl
 Signal #1 Phase : ZB-MR1 Signal #2 Phase: ZB-MR2
 Signal #1 Info : 30Mx0.32mmx 0.50µ Signal #2 Info : 30M x 0.32mm x 0.25µm

Compound	RT#1	RT#2	Resp#1	Resp#2	ng/ml	ng/ml
System Monitoring Compounds						
1) SA Tetrachlo...	4.279	3.593	763360	789566	25.509	27.956
2) SA Decachlor...	9.879	8.544	545381	350235	14.576	12.951
Target Compounds						
3) L1 AR-1016-1	5.441	4.665	380104	356486	267.468	265.260
4) L1 AR-1016-2	5.462	4.683	542908	476036	274.352	260.706
5) L1 AR-1016-3	5.524	4.858	327960	265912	255.871	265.347
6) L1 AR-1016-4	5.621	4.898	281165	475542	268.999	584.466 #
7) L1 AR-1016-5	5.913	5.109	463613	486425	411.544	441.860
8) L2 AR-1221-1	4.483	3.801	33275	32543	76.538	88.640
9) L2 AR-1221-2	4.575	3.888	47097	51002	140.447	183.890 #
10) L2 AR-1221-3	4.650	3.963	202396	188820	201.271	212.515
11) L3 AR-1232-1	4.650	3.963	202396	188820	235.645	255.136
12) L3 AR-1232-2	5.174	4.683	321261	476036	662.235	543.142
13) L3 AR-1232-3	5.462	4.858	542908	265912	561.154	554.364
14) L3 AR-1232-4	5.621	4.939	281165	322128	552.886	758.369 #
15) L3 AR-1232-5	5.711	5.109	561947	486425	1294.289	1003.753
16) L4 AR-1242-1	5.441	4.665	380104	356486	313.929	318.115
17) L4 AR-1242-2	5.462	4.683	542908	476036	321.553	312.884
18) L4 AR-1242-3	5.524	4.858	327960	265912	299.358	307.052
19) L4 AR-1242-4	5.621	4.939	281165	322128	312.467	384.537
20) L4 AR-1242-5	6.355	5.459	316792	1039765	289.580	866.186 #
21) L5 AR-1248-1	5.441	4.665	380104	356486	419.949	425.133
22) L5 AR-1248-2	5.711	4.898	561947	475542	421.370	432.797
23) L5 AR-1248-3	5.913	4.939	463613	322128	313.945	283.776
24) L5 AR-1248-4	6.314	5.109	385787	486425	221.242	346.413 #
25) L5 AR-1248-5	6.355	5.498	316792	200221	189.659	133.684 #
26) L6 AR-1254-1	6.288	5.459	1089597	1039765	518.897	388.505 #
27) L6 AR-1254-2	6.505	5.604	1385046	977346	417.330	400.109
28) L6 AR-1254-3	6.871	6.006	1429011	1586699	393.069	399.913
29) L6 AR-1254-4	7.154	6.232	891099	778142	327.526	290.224
30) L6 AR-1254-5	7.571	6.646	1493953	1298959	521.246	358.959 #
31) L7 AR-1260-1	7.032	6.133	854188	931719	395.550	422.896
32) L7 AR-1260-2	7.288	6.320	1089040	1025262	415.841	335.758
33) L7 AR-1260-3	7.645	6.473	459998	773132	230.001	310.242 #
34) L7 AR-1260-4	7.865	6.941	815572	342439	352.664	165.953 #
35) L7 AR-1260-5	8.179	7.182	852522	937534	200.957	186.675
36) L8 AR-1262-1	7.645	6.682	459998	524227	143.487	127.836
37) L8 AR-1262-2	8.179	7.182	852522	937534	158.795	149.938
38) L8 AR-1262-3	8.490	7.462	546943	160577	150.720	65.197 #
39) L8 AR-1262-4	8.541	7.526	271836	560529	100.120	136.883 #
40) L8 AR-1262-5	9.182	8.019	166176	202605	91.987	118.890 #
41) L9 AR-1268-1	8.490	7.462	546943	160577	90.571	23.175 #

Data Path : Z:\pestpcbsrv\HPCHEM1\ECD_0\Data\P0050319\
 Data File : P0055845.D
 Signal(s) : Signal #1: ECD1A.CH Signal #2: ECD2B.CH
 Acq On : 03 May 2019 21:39
 Operator : SM/SJ
 Sample : K2627-01MSD
 Misc :
 ALS Vial : 13 Sample Multiplier: 1

Instrument :
 ECD_0
 ClientSampleId :
 WC-1MSD

Integration File signal 1: autoint1.e
 Integration File signal 2: autoint2.e
 Quant Time: May 03 23:01:04 2019
 Quant Method : Z:\pestpcbsrv\HPCHEM1\ECD_0\methods\P0050319.M
 Quant Title : GC EXTRACTABLES
 QLast Update : Fri May 03 15:20:04 2019
 Response via : Initial Calibration
 Integrator: ChemStation 6890 Scale Mode: Small noise peaks clipped

Volume Inj. : 2 µl
 Signal #1 Phase : ZB-MR1 Signal #2 Phase: ZB-MR2
 Signal #1 Info : 30Mx0.32mmx 0.50µ Signal #2 Info : 30M x 0.32mm x 0.25µm

	Compound	RT#1	RT#2	Resp#1	Resp#2	ng/ml	ng/ml
42)	L9 AR-1268-2	8.541	7.526	271836	560529	49.662	98.526 #
43)	L9 AR-1268-3	0.000	7.734	0	18012	N.D.	3.814 #
44)	L9 AR-1268-4	9.182	8.019	166176	202605	84.689	107.102 #
45)	L9 AR-1268-5	9.566	8.299	51727	62319	3.834	5.117 #

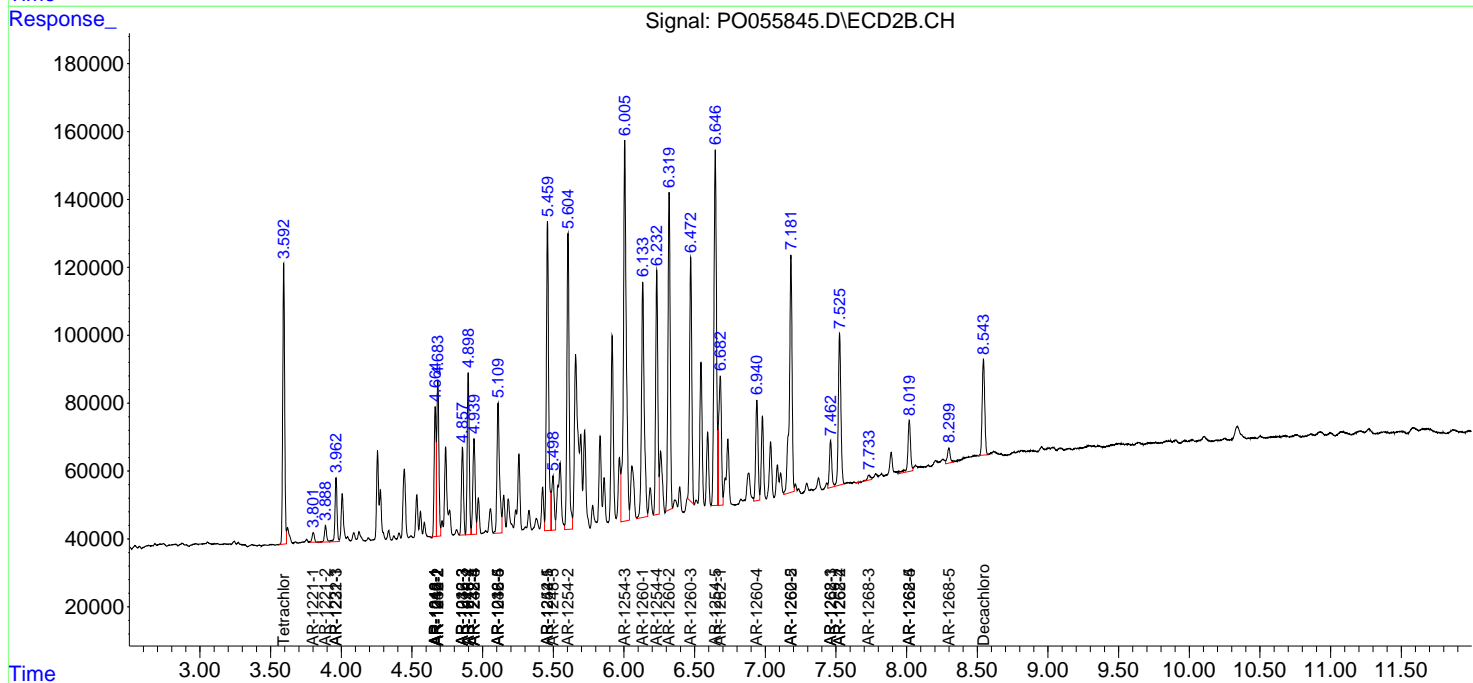
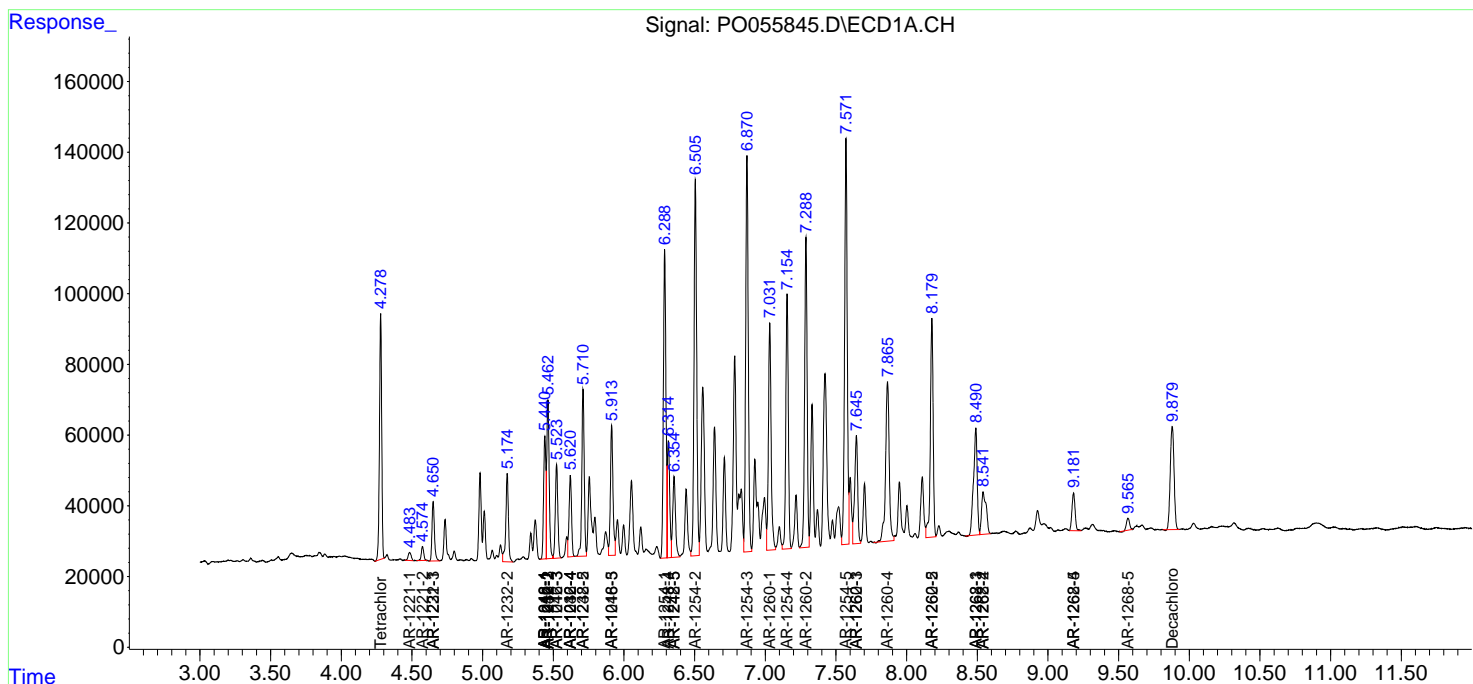
(f)=RT Delta > 1/2 Window (#)=Amounts differ by > 25% (m)=manual int.

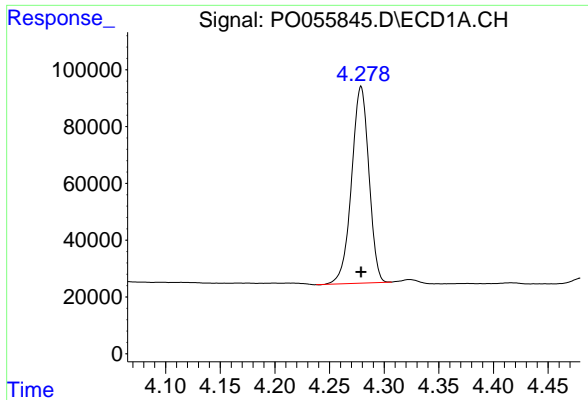
Data Path : Z:\pestpcbsrv\HPCHEM1\ECD_O\Data\P0050319\
 Data File : P0055845.D
 Signal(s) : Signal #1: ECD1A.CH Signal #2: ECD2B.CH
 Acq On : 03 May 2019 21:39
 Operator : SM/SJ
 Sample : K2627-01MSD
 Misc :
 ALS Vial : 13 Sample Multiplier: 1

Instrument :
 ECD_O
 ClientSampled :
 WC-1MSD

Integration File signal 1: autoint1.e
 Integration File signal 2: autoint2.e
 Quant Time: May 03 23:01:04 2019
 Quant Method : Z:\pestpcbsrv\HPCHEM1\ECD_O\methods\P0050319.M
 Quant Title : GC EXTRACTABLES
 QLast Update : Fri May 03 15:20:04 2019
 Response via : Initial Calibration
 Integrator: ChemStation 6890 Scale Mode: Small noise peaks clipped

Volume Inj. : 2 µl
 Signal #1 Phase : ZB-MR1 Signal #2 Phase: ZB-MR2
 Signal #1 Info : 30Mx0.32mmx 0.50µ Signal #2 Info : 30M x 0.32mm x 0.25µm

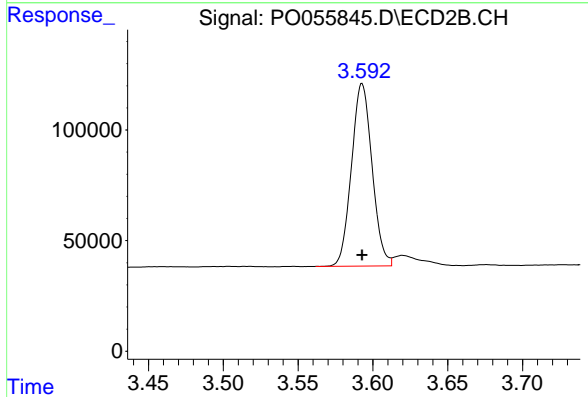




#1 Tetrachloro-m-xylene

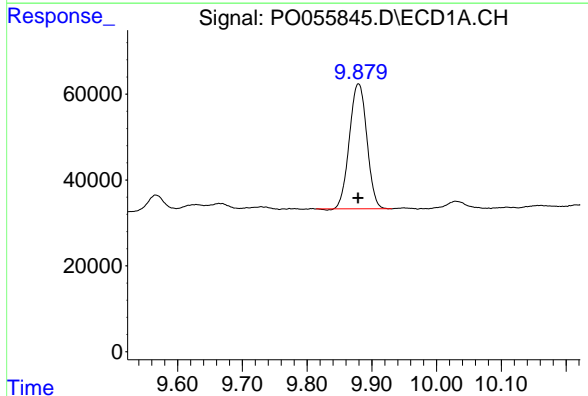
R.T.: 4.279 min
 Delta R.T.: 0.000 min
 Response: 763360
 Conc: 25.51 ng/ml

Instrument :
 ECD_O
 ClientSampleId :
 WC-1MSD



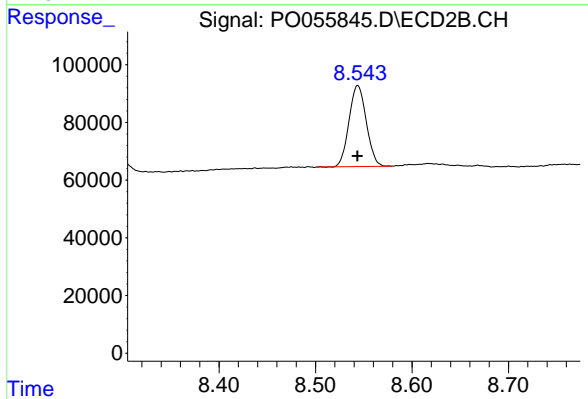
#1 Tetrachloro-m-xylene

R.T.: 3.593 min
 Delta R.T.: 0.000 min
 Response: 789566
 Conc: 27.96 ng/ml



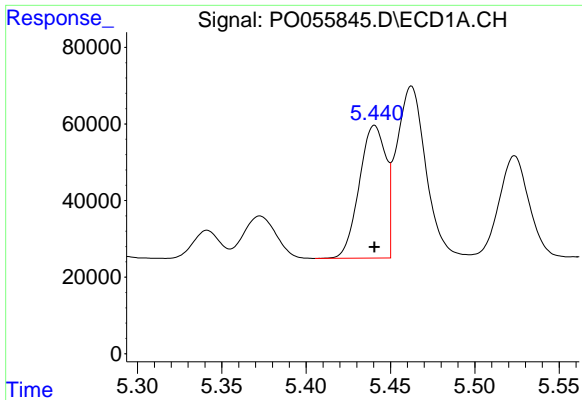
#2 Decachlorobiphenyl

R.T.: 9.879 min
 Delta R.T.: 0.000 min
 Response: 545381
 Conc: 14.58 ng/ml



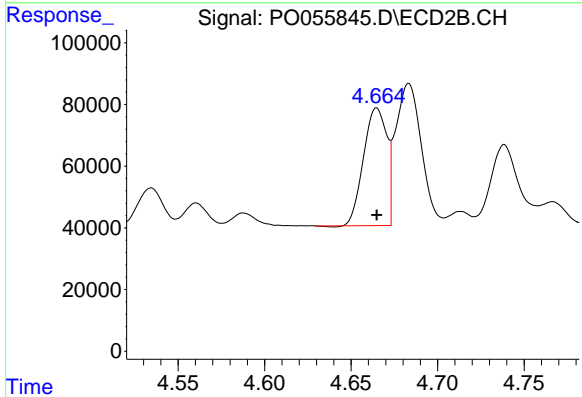
#2 Decachlorobiphenyl

R.T.: 8.544 min
 Delta R.T.: 0.000 min
 Response: 350235
 Conc: 12.95 ng/ml

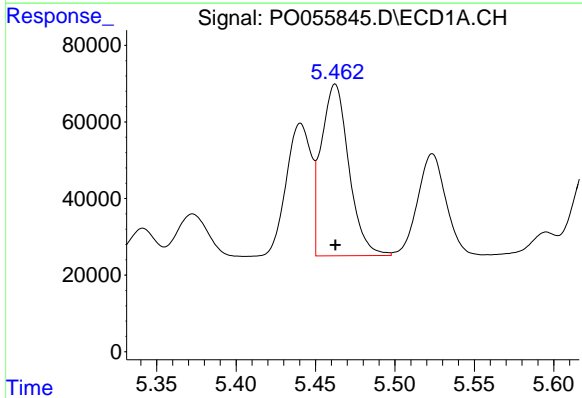


#3 AR-1016-1
 R.T.: 5.441 min
 Delta R.T.: 0.000 min
 Response: 380104
 Conc: 267.47 ng/ml

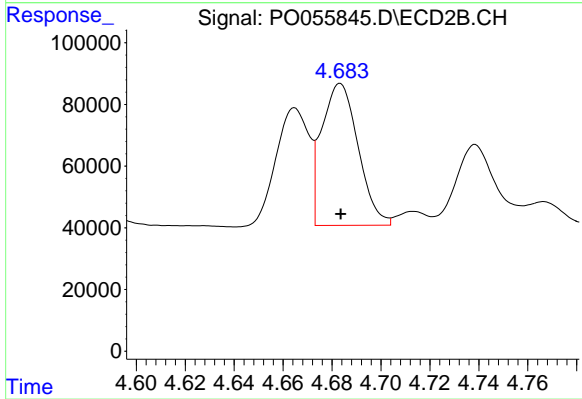
Instrument :
 ECD_O
 ClientSampleId :
 WC-1MSD



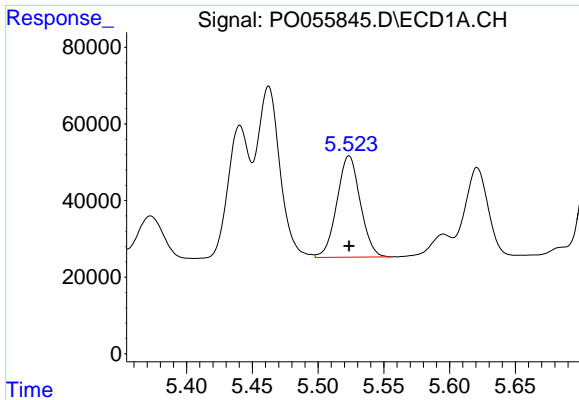
#3 AR-1016-1
 R.T.: 4.665 min
 Delta R.T.: 0.000 min
 Response: 356486
 Conc: 265.26 ng/ml



#4 AR-1016-2
 R.T.: 5.462 min
 Delta R.T.: 0.000 min
 Response: 542908
 Conc: 274.35 ng/ml



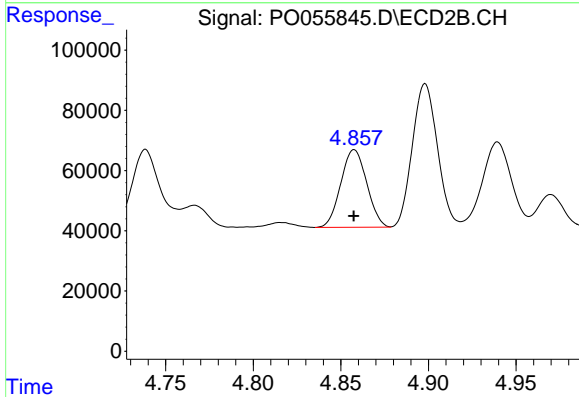
#4 AR-1016-2
 R.T.: 4.683 min
 Delta R.T.: 0.000 min
 Response: 476036
 Conc: 260.71 ng/ml



#5 AR-1016-3

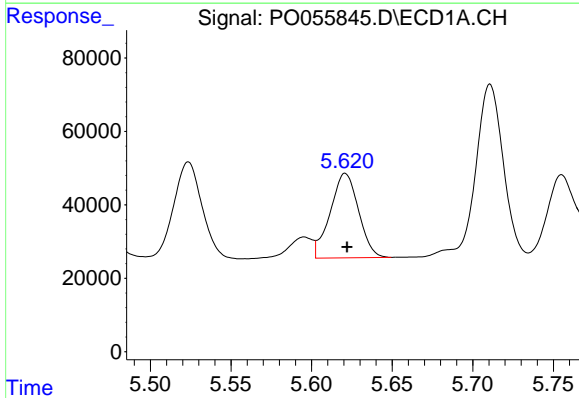
R.T.: 5.524 min
 Delta R.T.: 0.000 min
 Response: 327960
 Conc: 255.87 ng/ml

Instrument :
 ECD_O
 ClientSampleId :
 WC-1MSD



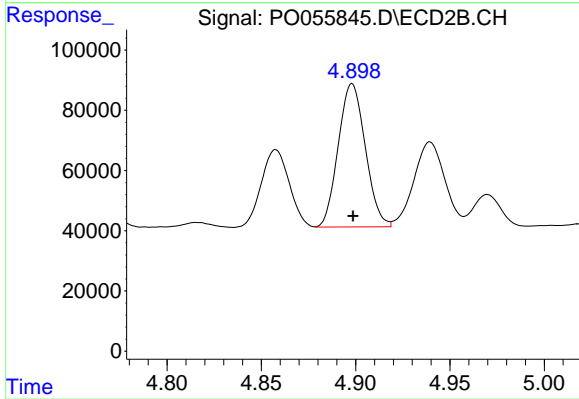
#5 AR-1016-3

R.T.: 4.858 min
 Delta R.T.: 0.000 min
 Response: 265912
 Conc: 265.35 ng/ml



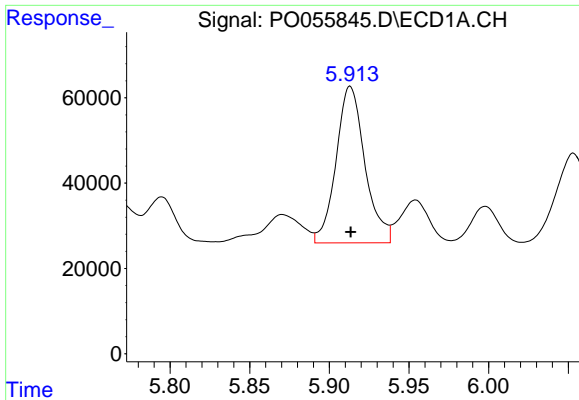
#6 AR-1016-4

R.T.: 5.621 min
 Delta R.T.: -0.001 min
 Response: 281165
 Conc: 269.00 ng/ml



#6 AR-1016-4

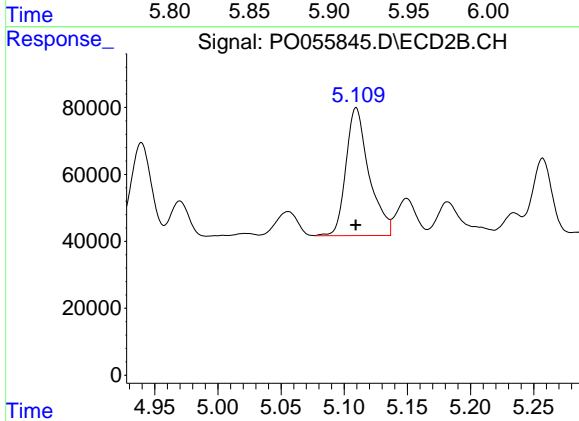
R.T.: 4.898 min
 Delta R.T.: 0.000 min
 Response: 475542
 Conc: 584.47 ng/ml



#7 AR-1016-5

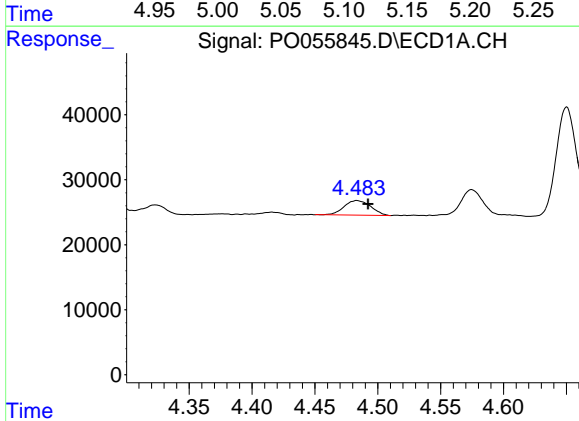
R.T.: 5.913 min
 Delta R.T.: 0.000 min
 Response: 463613
 Conc: 411.54 ng/ml

Instrument :
 ECD_O
 ClientSampleId :
 WC-1MSD



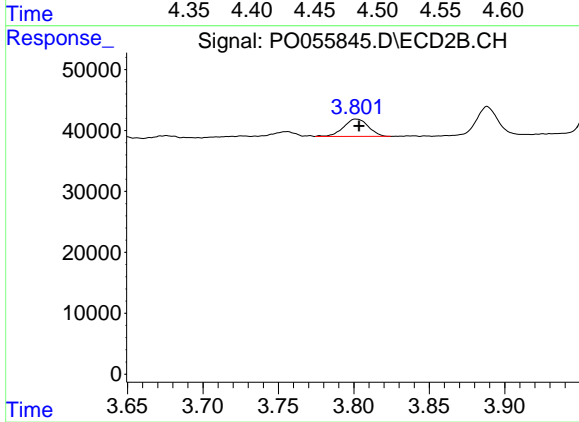
#7 AR-1016-5

R.T.: 5.109 min
 Delta R.T.: 0.000 min
 Response: 486425
 Conc: 441.86 ng/ml



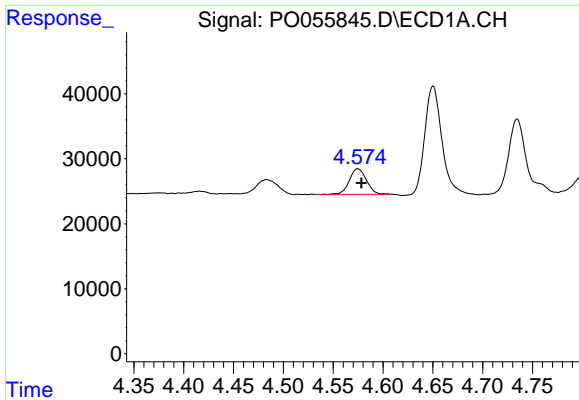
#8 AR-1221-1

R.T.: 4.483 min
 Delta R.T.: -0.009 min
 Response: 33275
 Conc: 76.54 ng/ml



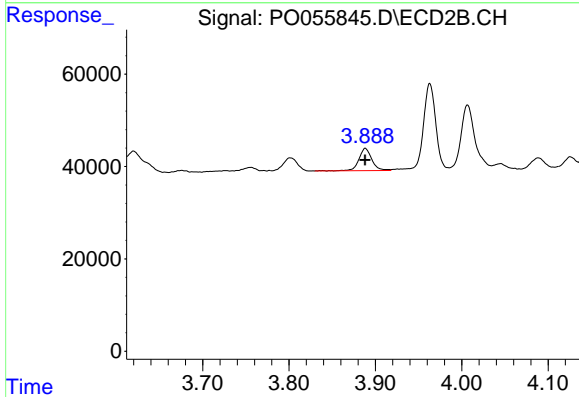
#8 AR-1221-1

R.T.: 3.801 min
 Delta R.T.: -0.002 min
 Response: 32543
 Conc: 88.64 ng/ml

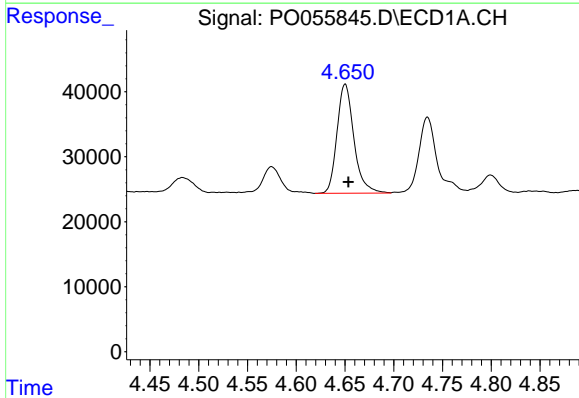


#9 AR-1221-2
 R.T.: 4.575 min
 Delta R.T.: -0.004 min
 Response: 47097
 Conc: 140.45 ng/ml

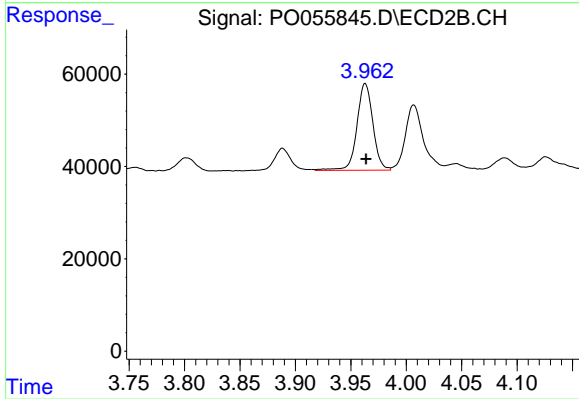
Instrument :
 ECD_O
ClientSampleId :
 WC-1MSD



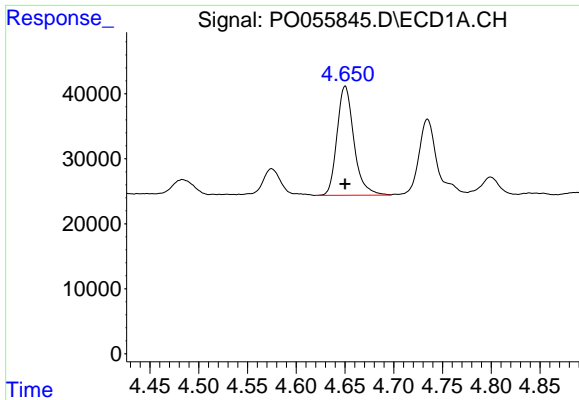
#9 AR-1221-2
 R.T.: 3.888 min
 Delta R.T.: 0.000 min
 Response: 51002
 Conc: 183.89 ng/ml



#10 AR-1221-3
 R.T.: 4.650 min
 Delta R.T.: -0.003 min
 Response: 202396
 Conc: 201.27 ng/ml



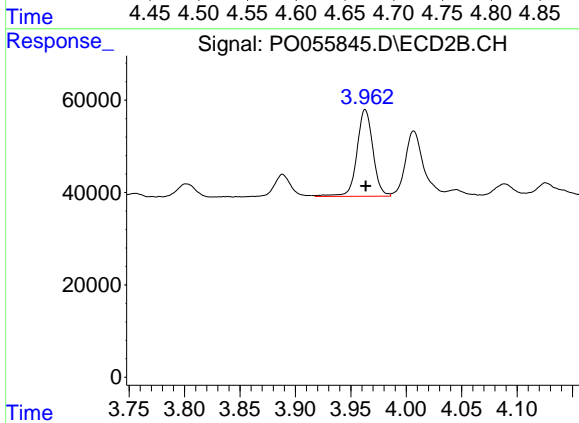
#10 AR-1221-3
 R.T.: 3.963 min
 Delta R.T.: 0.000 min
 Response: 188820
 Conc: 212.52 ng/ml



#11 AR-1232-1

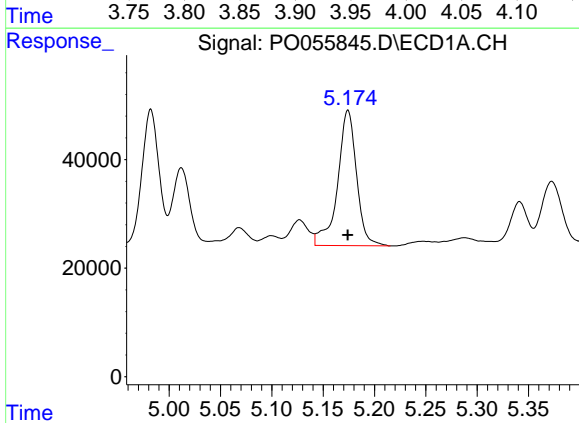
R.T.: 4.650 min
 Delta R.T.: 0.000 min
 Response: 202396
 Conc: 235.64 ng/ml

Instrument :
 ECD_O
 ClientSampleId :
 WC-1MSD



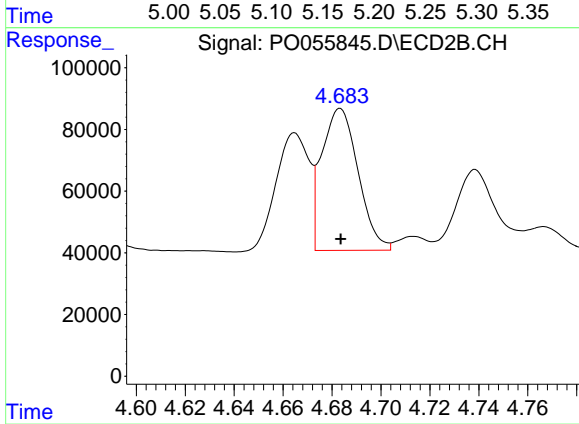
#11 AR-1232-1

R.T.: 3.963 min
 Delta R.T.: 0.000 min
 Response: 188820
 Conc: 255.14 ng/ml



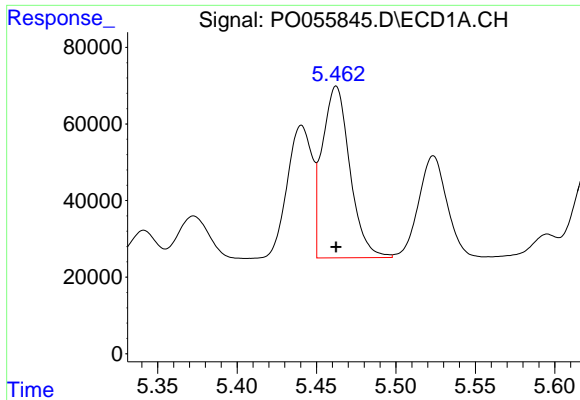
#12 AR-1232-2

R.T.: 5.174 min
 Delta R.T.: 0.000 min
 Response: 321261
 Conc: 662.23 ng/ml



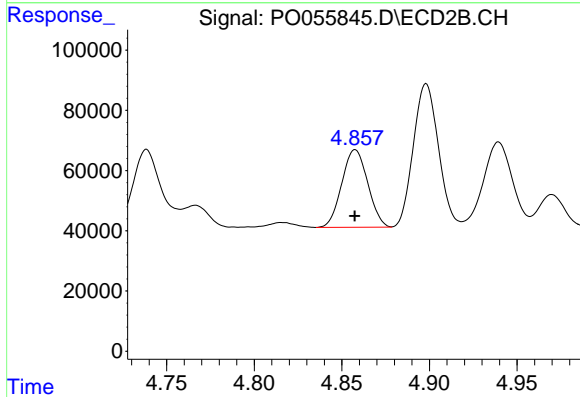
#12 AR-1232-2

R.T.: 4.683 min
 Delta R.T.: 0.000 min
 Response: 476036
 Conc: 543.14 ng/ml

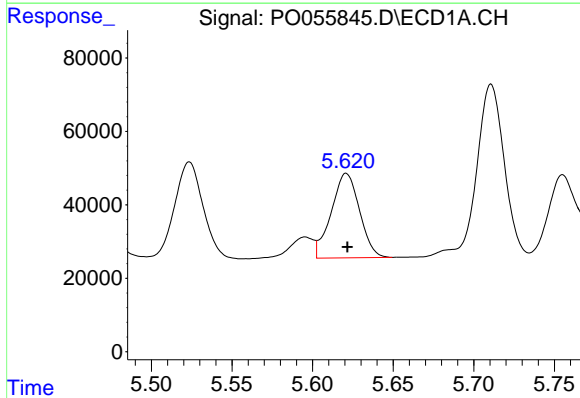


#13 AR-1232-3
 R.T.: 5.462 min
 Delta R.T.: 0.000 min
 Response: 542908
 Conc: 561.15 ng/ml

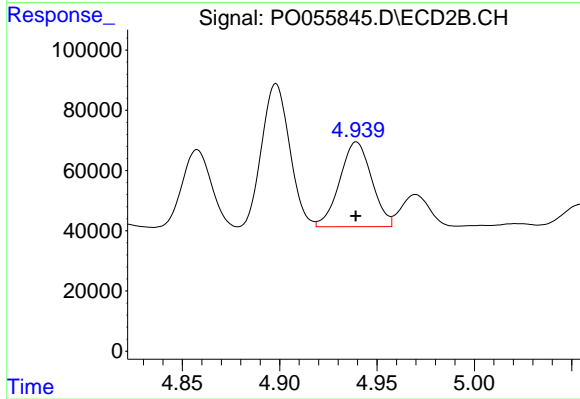
Instrument :
 ECD_O
 ClientSampled :
 WC-1MSD



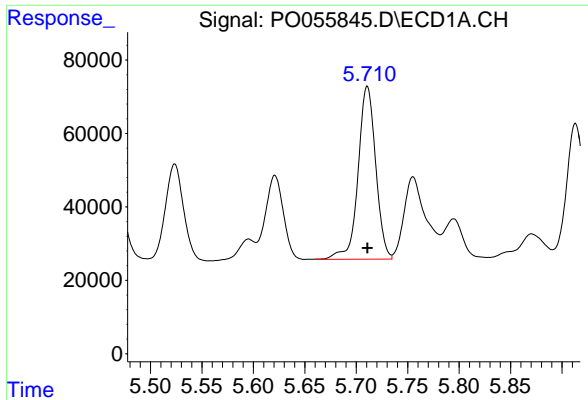
#13 AR-1232-3
 R.T.: 4.858 min
 Delta R.T.: 0.000 min
 Response: 265912
 Conc: 554.36 ng/ml



#14 AR-1232-4
 R.T.: 5.621 min
 Delta R.T.: 0.000 min
 Response: 281165
 Conc: 552.89 ng/ml



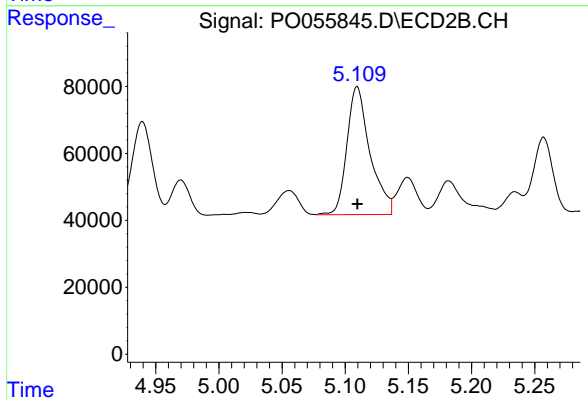
#14 AR-1232-4
 R.T.: 4.939 min
 Delta R.T.: 0.000 min
 Response: 322128
 Conc: 758.37 ng/ml



#15 AR-1232-5

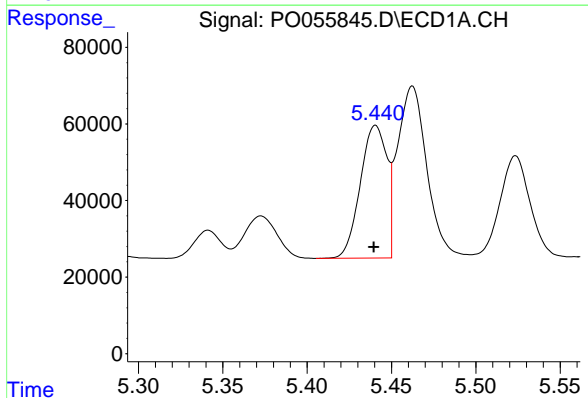
R.T.: 5.711 min
 Delta R.T.: 0.000 min
 Response: 561947
 Conc: 1294.29 ng/ml

Instrument :
 ECD_O
 ClientSampleId :
 WC-1MSD



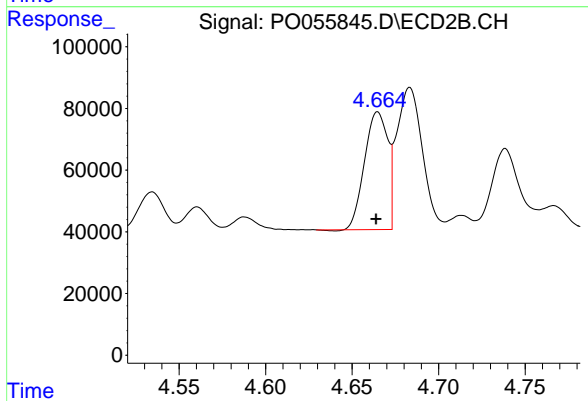
#15 AR-1232-5

R.T.: 5.109 min
 Delta R.T.: 0.000 min
 Response: 486425
 Conc: 1003.75 ng/ml



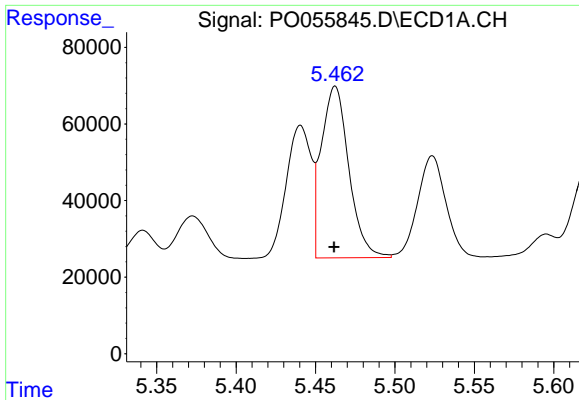
#16 AR-1242-1

R.T.: 5.441 min
 Delta R.T.: 0.001 min
 Response: 380104
 Conc: 313.93 ng/ml



#16 AR-1242-1

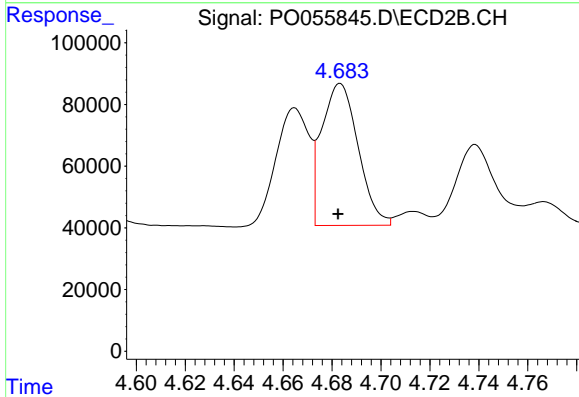
R.T.: 4.665 min
 Delta R.T.: 0.000 min
 Response: 356486
 Conc: 318.11 ng/ml



#17 AR-1242-2

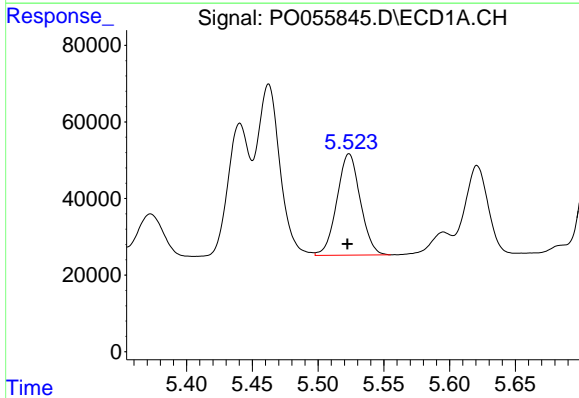
R.T.: 5.462 min
 Delta R.T.: 0.000 min
 Response: 542908
 Conc: 321.55 ng/ml

Instrument :
 ECD_O
 ClientSampleId :
 WC-1MSD



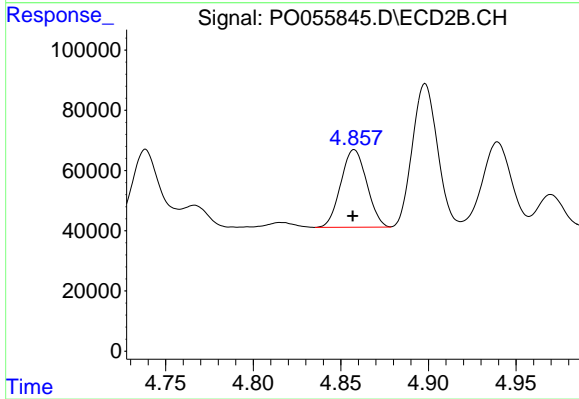
#17 AR-1242-2

R.T.: 4.683 min
 Delta R.T.: 0.000 min
 Response: 476036
 Conc: 312.88 ng/ml



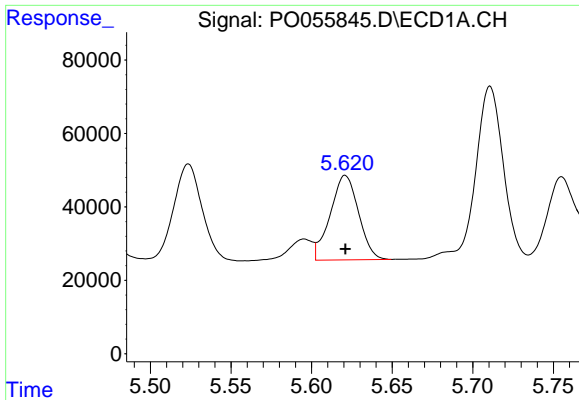
#18 AR-1242-3

R.T.: 5.524 min
 Delta R.T.: 0.001 min
 Response: 327960
 Conc: 299.36 ng/ml



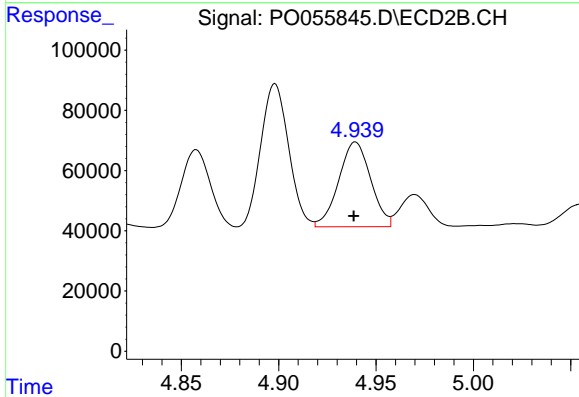
#18 AR-1242-3

R.T.: 4.858 min
 Delta R.T.: 0.000 min
 Response: 265912
 Conc: 307.05 ng/ml

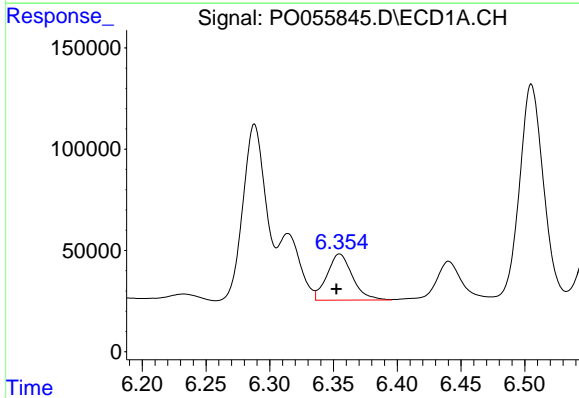


#19 AR-1242-4
 R.T.: 5.621 min
 Delta R.T.: 0.000 min
 Response: 281165
 Conc: 312.47 ng/ml

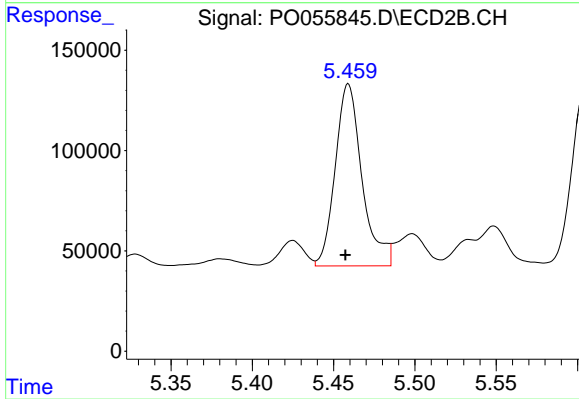
Instrument :
 ECD_O
 ClientSampleId :
 WC-1MSD



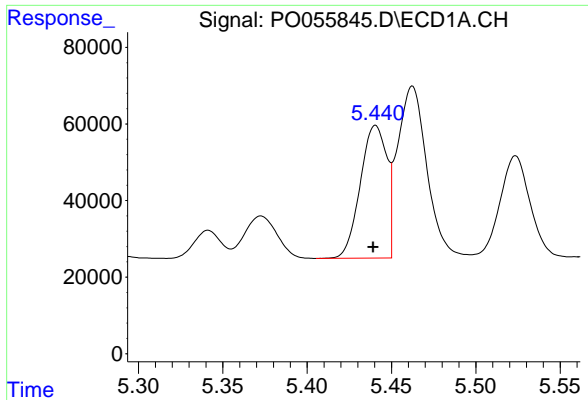
#19 AR-1242-4
 R.T.: 4.939 min
 Delta R.T.: 0.000 min
 Response: 322128
 Conc: 384.54 ng/ml



#20 AR-1242-5
 R.T.: 6.355 min
 Delta R.T.: 0.002 min
 Response: 316792
 Conc: 289.58 ng/ml

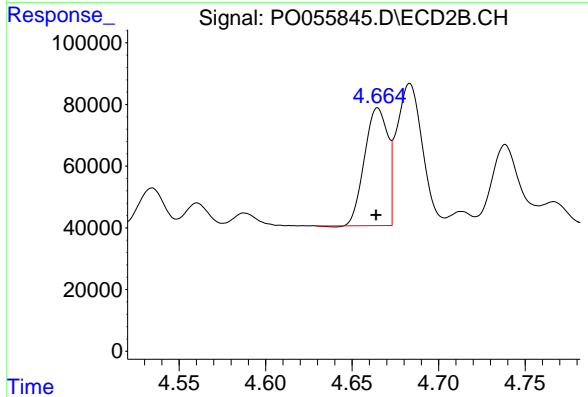


#20 AR-1242-5
 R.T.: 5.459 min
 Delta R.T.: 0.002 min
 Response: 1039765
 Conc: 866.19 ng/ml

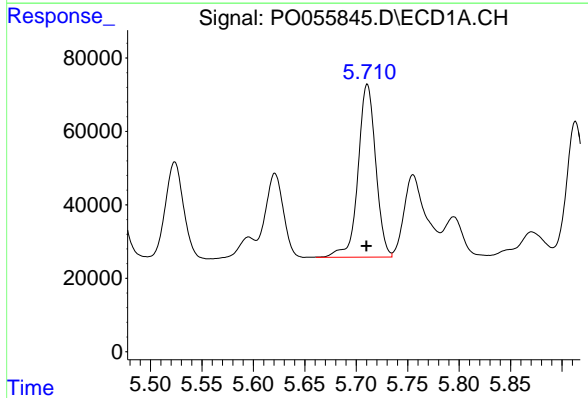


#21 AR-1248-1
 R.T.: 5.441 min
 Delta R.T.: 0.001 min
 Response: 380104
 Conc: 419.95 ng/ml

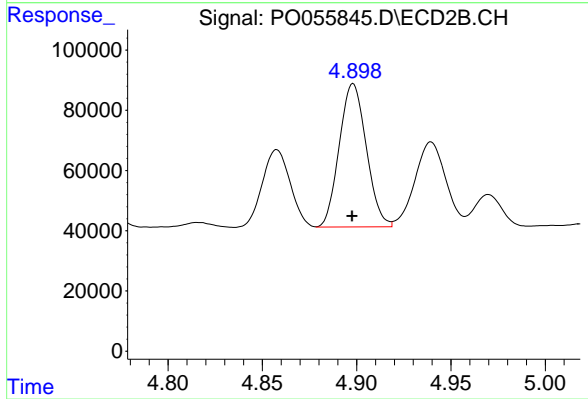
Instrument :
 ECD_O
 ClientSampleId :
 WC-1MSD



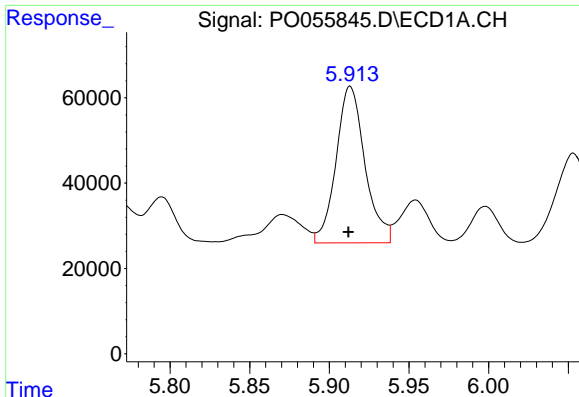
#21 AR-1248-1
 R.T.: 4.665 min
 Delta R.T.: 0.000 min
 Response: 356486
 Conc: 425.13 ng/ml



#22 AR-1248-2
 R.T.: 5.711 min
 Delta R.T.: 0.000 min
 Response: 561947
 Conc: 421.37 ng/ml



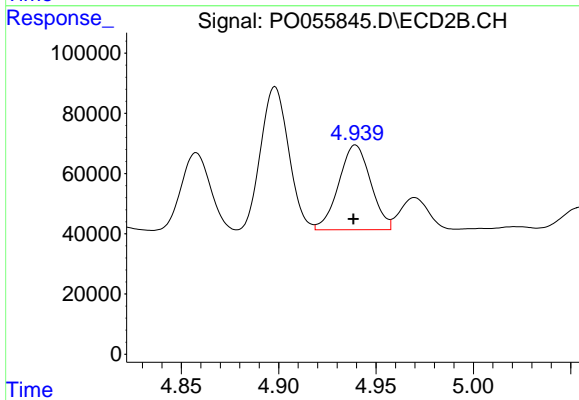
#22 AR-1248-2
 R.T.: 4.898 min
 Delta R.T.: 0.000 min
 Response: 475542
 Conc: 432.80 ng/ml



#23 AR-1248-3

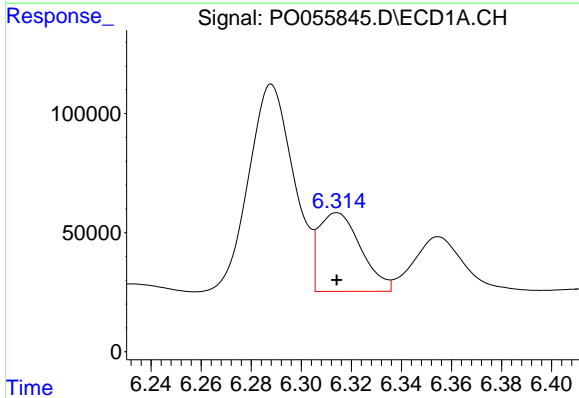
R.T.: 5.913 min
 Delta R.T.: 0.000 min
 Response: 463613
 Conc: 313.95 ng/ml

Instrument :
 ECD_O
 ClientSampleId :
 WC-1MSD



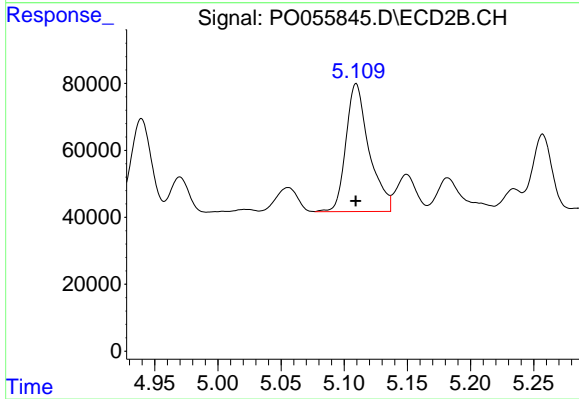
#23 AR-1248-3

R.T.: 4.939 min
 Delta R.T.: 0.001 min
 Response: 322128
 Conc: 283.78 ng/ml



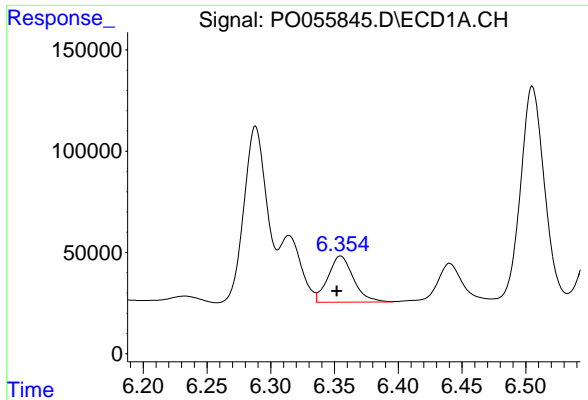
#24 AR-1248-4

R.T.: 6.314 min
 Delta R.T.: 0.000 min
 Response: 385787
 Conc: 221.24 ng/ml



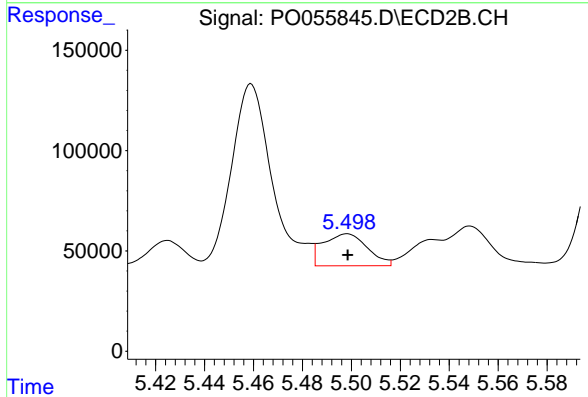
#24 AR-1248-4

R.T.: 5.109 min
 Delta R.T.: 0.000 min
 Response: 486425
 Conc: 346.41 ng/ml

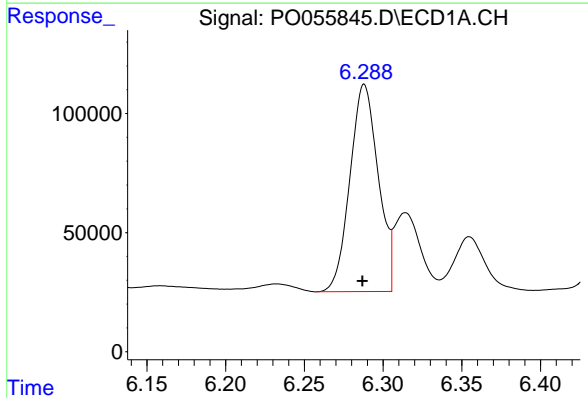


#25 AR-1248-5
 R.T.: 6.355 min
 Delta R.T.: 0.003 min
 Response: 316792
 Conc: 189.66 ng/ml

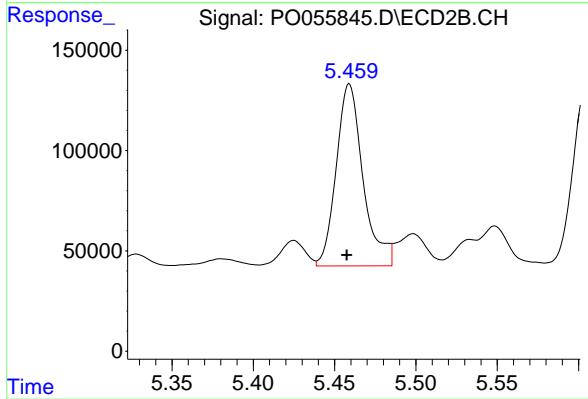
Instrument :
 ECD_O
 ClientSampleId :
 WC-1MSD



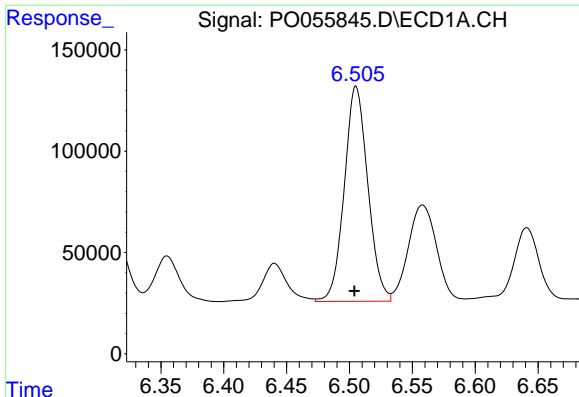
#25 AR-1248-5
 R.T.: 5.498 min
 Delta R.T.: 0.000 min
 Response: 200221
 Conc: 133.68 ng/ml



#26 AR-1254-1
 R.T.: 6.288 min
 Delta R.T.: 0.001 min
 Response: 1089597
 Conc: 518.90 ng/ml



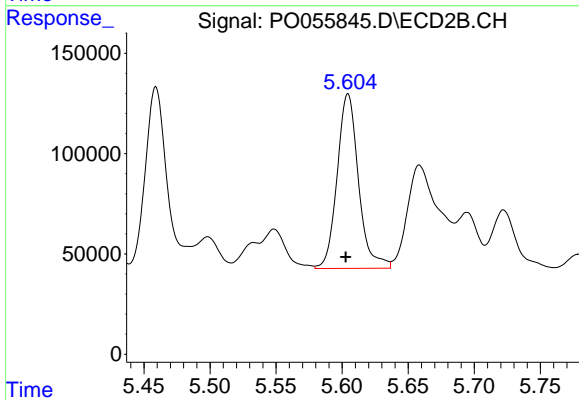
#26 AR-1254-1
 R.T.: 5.459 min
 Delta R.T.: 0.002 min
 Response: 1039765
 Conc: 388.51 ng/ml



#27 AR-1254-2

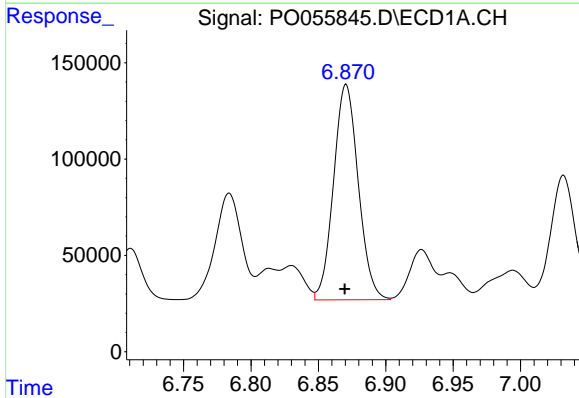
R.T.: 6.505 min
Delta R.T.: 0.001 min
Response: 1385046
Conc: 417.33 ng/ml

Instrument :
ECD_O
ClientSampled :
WC-1MSD



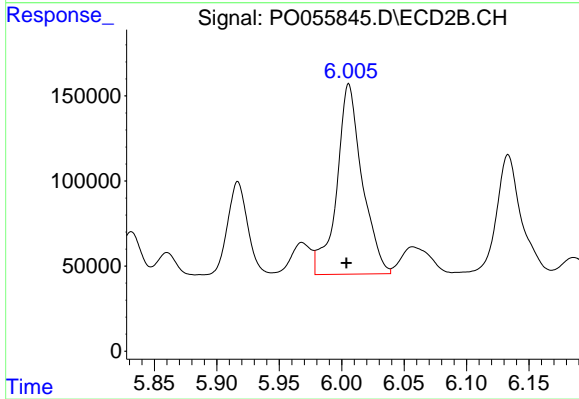
#27 AR-1254-2

R.T.: 5.604 min
Delta R.T.: 0.002 min
Response: 977346
Conc: 400.11 ng/ml



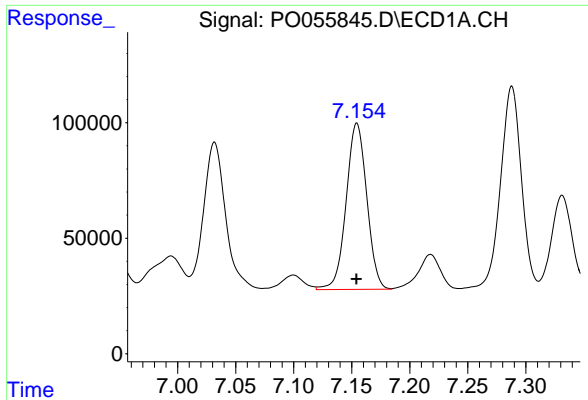
#28 AR-1254-3

R.T.: 6.871 min
Delta R.T.: 0.000 min
Response: 1429011
Conc: 393.07 ng/ml



#28 AR-1254-3

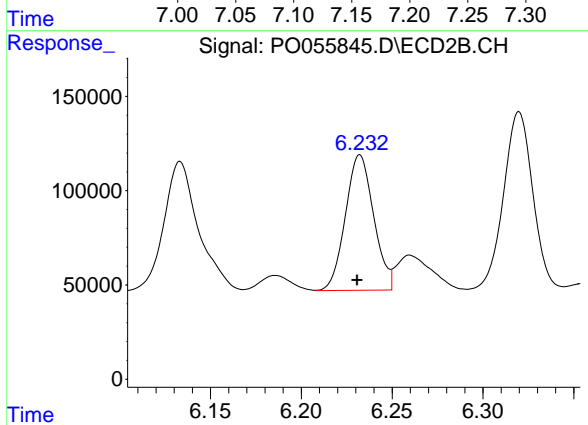
R.T.: 6.006 min
Delta R.T.: 0.002 min
Response: 1586699
Conc: 399.91 ng/ml



#29 AR-1254-4

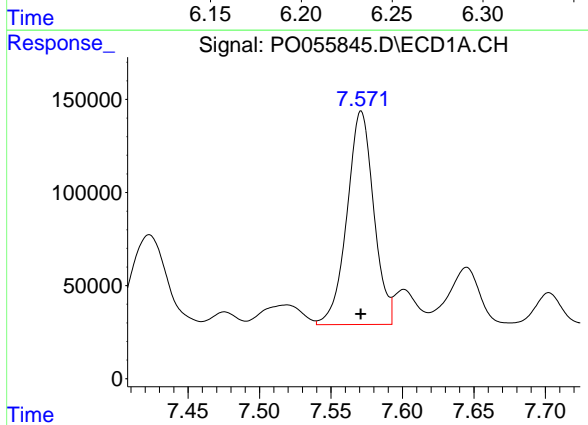
R.T.: 7.154 min
 Delta R.T.: 0.000 min
 Response: 891099
 Conc: 327.53 ng/ml

Instrument :
 ECD_O
 ClientSampled :
 WC-1MSD



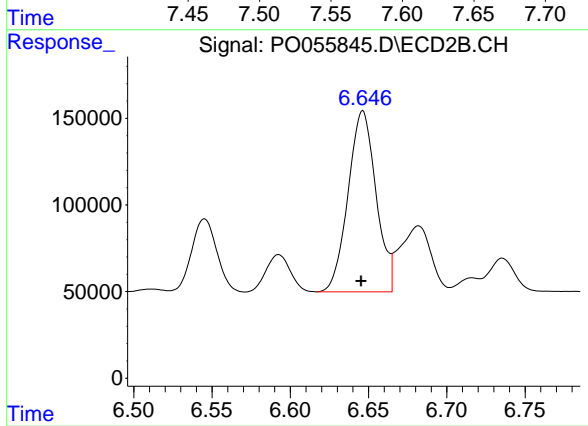
#29 AR-1254-4

R.T.: 6.232 min
 Delta R.T.: 0.002 min
 Response: 778142
 Conc: 290.22 ng/ml



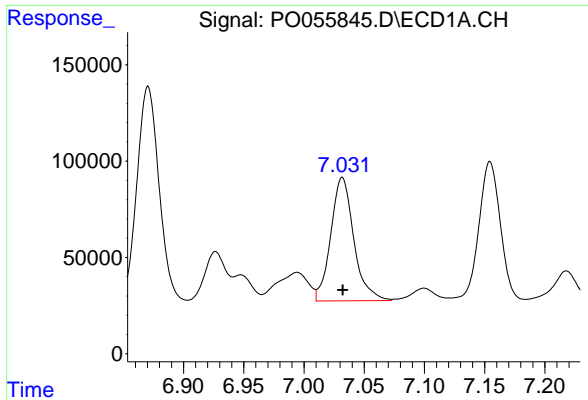
#30 AR-1254-5

R.T.: 7.571 min
 Delta R.T.: 0.000 min
 Response: 1493953
 Conc: 521.25 ng/ml



#30 AR-1254-5

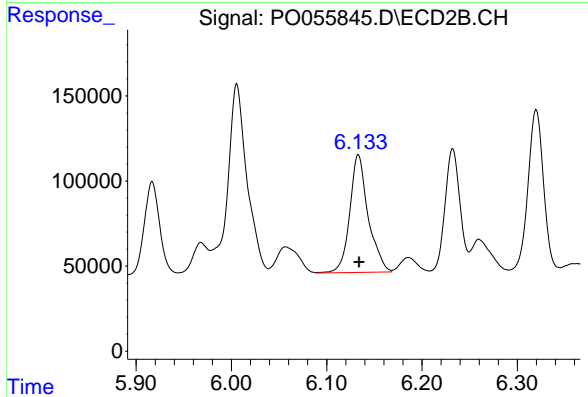
R.T.: 6.646 min
 Delta R.T.: 0.001 min
 Response: 1298959
 Conc: 358.96 ng/ml



#31 AR-1260-1

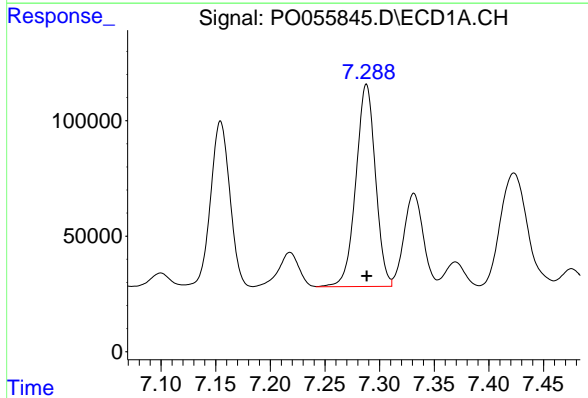
R.T.: 7.032 min
 Delta R.T.: 0.000 min
 Response: 854188
 Conc: 395.55 ng/ml

Instrument :
 ECD_O
 ClientSampled :
 WC-1MSD



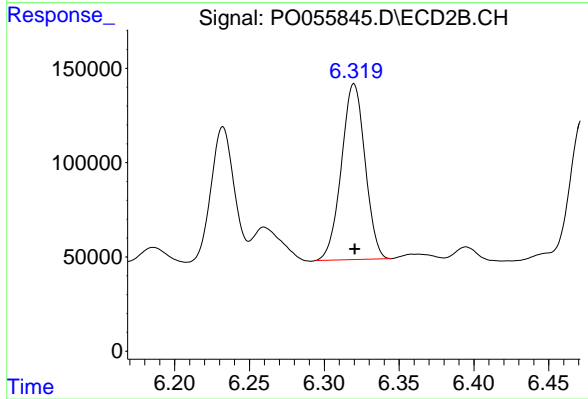
#31 AR-1260-1

R.T.: 6.133 min
 Delta R.T.: 0.000 min
 Response: 931719
 Conc: 422.90 ng/ml



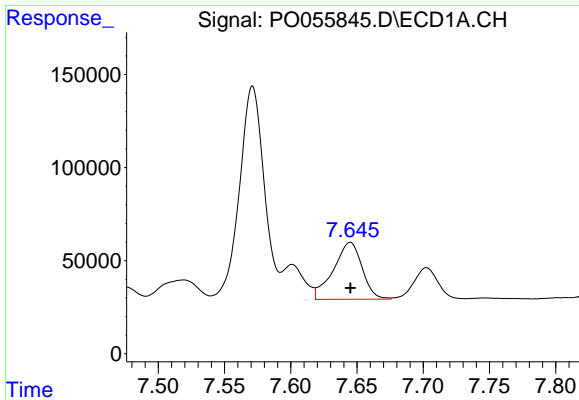
#32 AR-1260-2

R.T.: 7.288 min
 Delta R.T.: 0.000 min
 Response: 1089040
 Conc: 415.84 ng/ml



#32 AR-1260-2

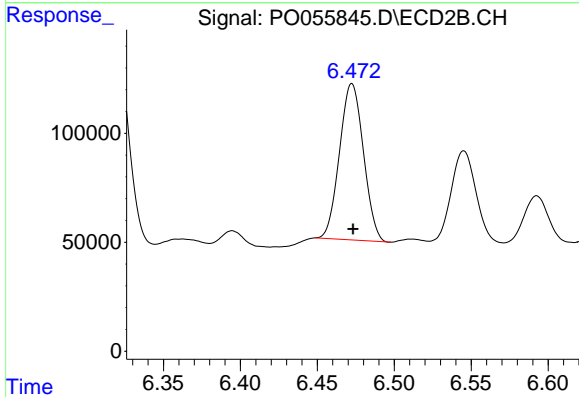
R.T.: 6.320 min
 Delta R.T.: 0.000 min
 Response: 1025262
 Conc: 335.76 ng/ml



#33 AR-1260-3

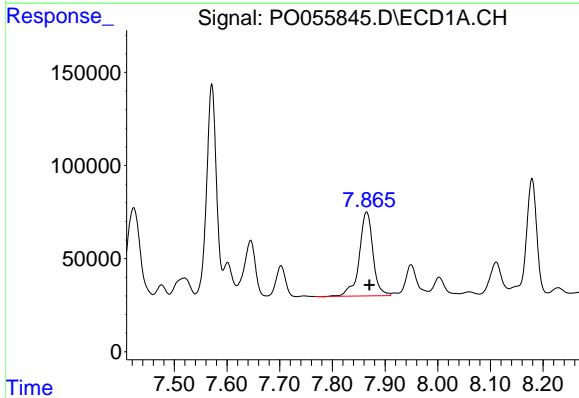
R.T.: 7.645 min
 Delta R.T.: 0.000 min
 Response: 459998
 Conc: 230.00 ng/ml

Instrument :
 ECD_O
 ClientSampleId :
 WC-1MSD



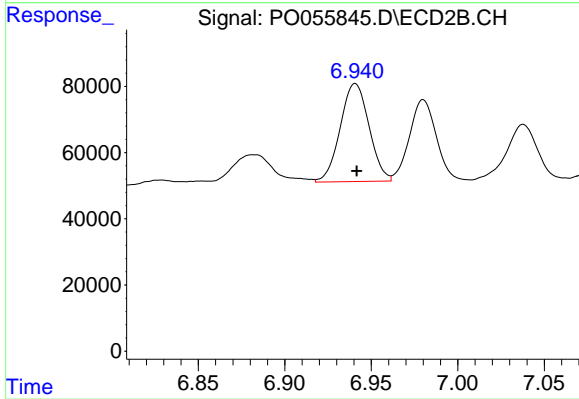
#33 AR-1260-3

R.T.: 6.473 min
 Delta R.T.: 0.000 min
 Response: 773132
 Conc: 310.24 ng/ml



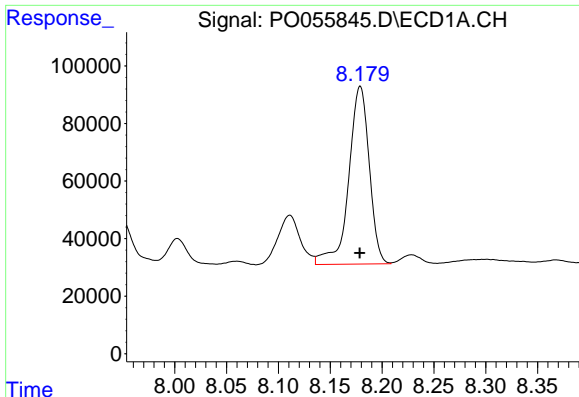
#34 AR-1260-4

R.T.: 7.865 min
 Delta R.T.: -0.005 min
 Response: 815572
 Conc: 352.66 ng/ml



#34 AR-1260-4

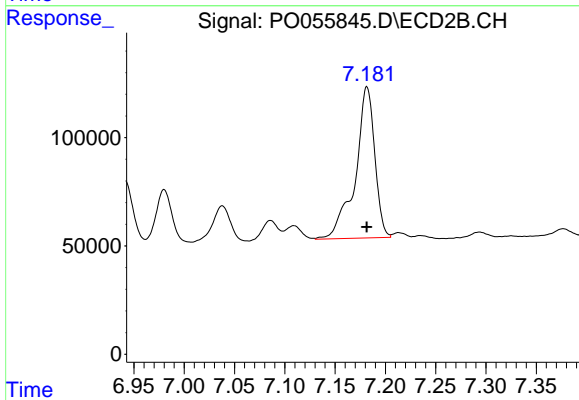
R.T.: 6.941 min
 Delta R.T.: 0.000 min
 Response: 342439
 Conc: 165.95 ng/ml



#35 AR-1260-5

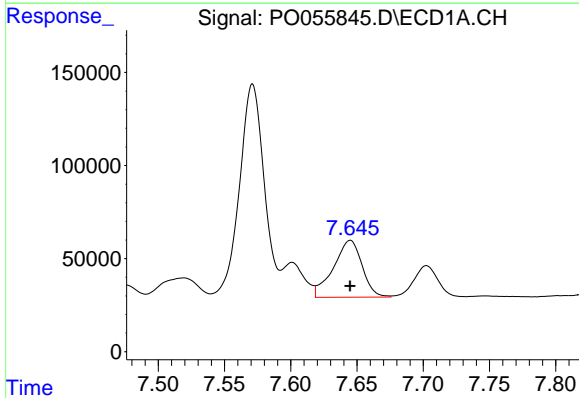
R.T.: 8.179 min
 Delta R.T.: 0.000 min
 Response: 852522
 Conc: 200.96 ng/ml

Instrument :
 ECD_O
 ClientSampleId :
 WC-1MSD



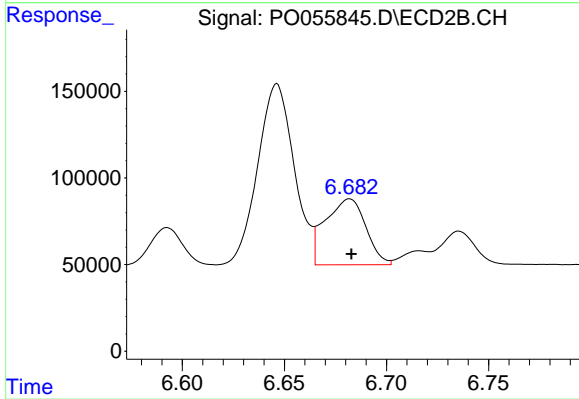
#35 AR-1260-5

R.T.: 7.182 min
 Delta R.T.: 0.000 min
 Response: 937534
 Conc: 186.68 ng/ml



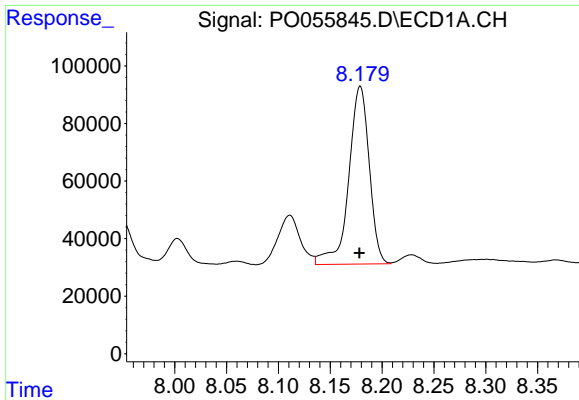
#36 AR-1262-1

R.T.: 7.645 min
 Delta R.T.: 0.000 min
 Response: 459998
 Conc: 143.49 ng/ml



#36 AR-1262-1

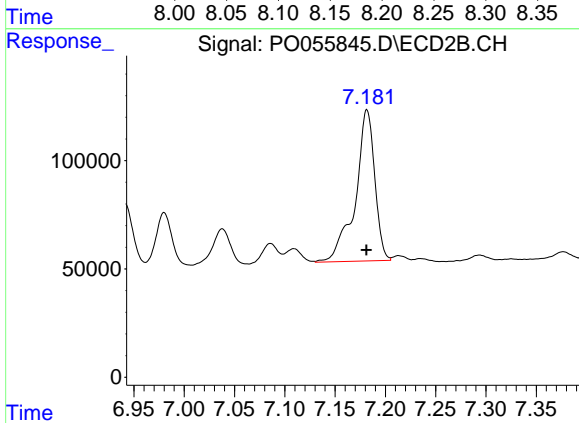
R.T.: 6.682 min
 Delta R.T.: 0.000 min
 Response: 524227
 Conc: 127.84 ng/ml



#37 AR-1262-2

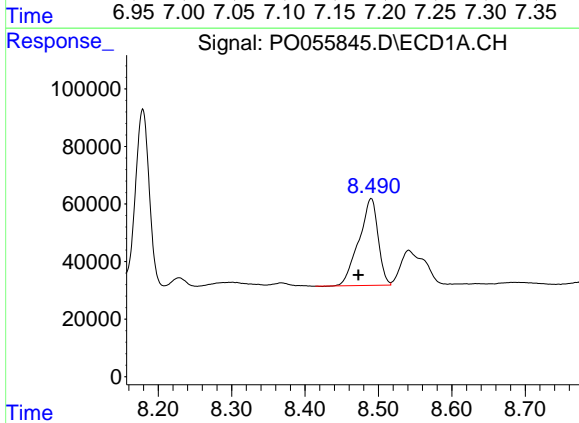
R.T.: 8.179 min
Delta R.T.: 0.000 min
Response: 852522
Conc: 158.79 ng/ml

Instrument :
ECD_O
ClientSampleId :
WC-1MSD



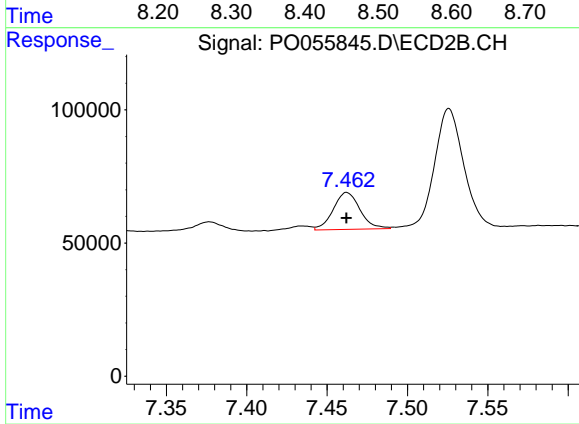
#37 AR-1262-2

R.T.: 7.182 min
Delta R.T.: 0.000 min
Response: 937534
Conc: 149.94 ng/ml



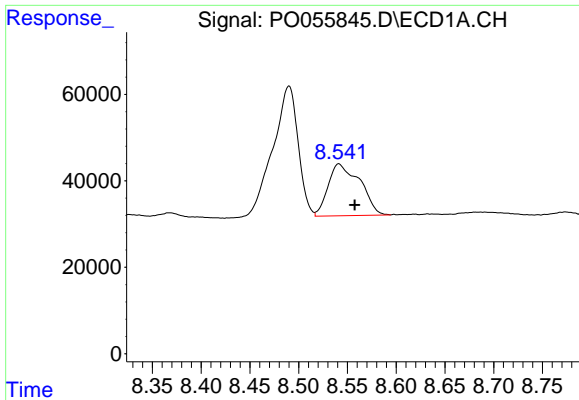
#38 AR-1262-3

R.T.: 8.490 min
Delta R.T.: 0.017 min
Response: 546943
Conc: 150.72 ng/ml



#38 AR-1262-3

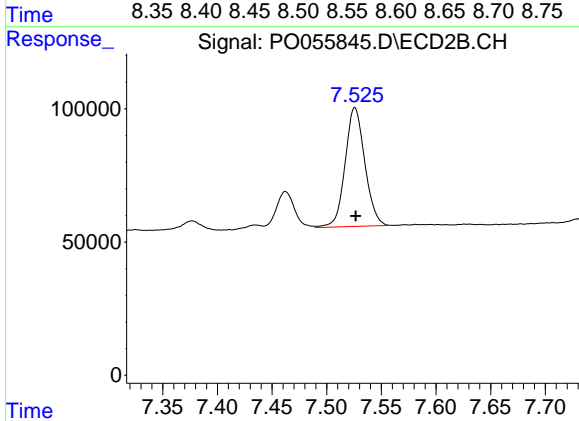
R.T.: 7.462 min
Delta R.T.: 0.000 min
Response: 160577
Conc: 65.20 ng/ml



#39 AR-1262-4

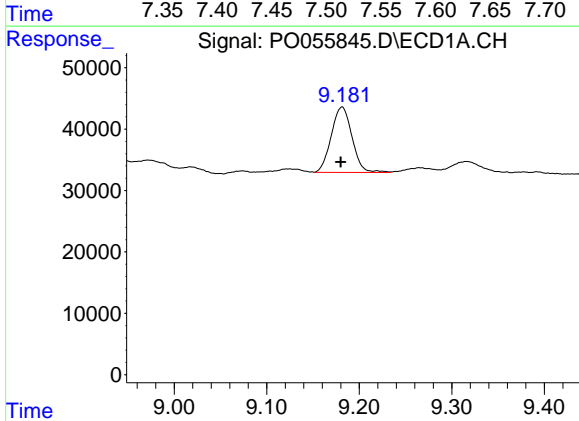
R.T.: 8.541 min
 Delta R.T.: -0.016 min
 Response: 271836
 Conc: 100.12 ng/ml

Instrument :
 ECD_O
 ClientSampleId :
 WC-1MSD



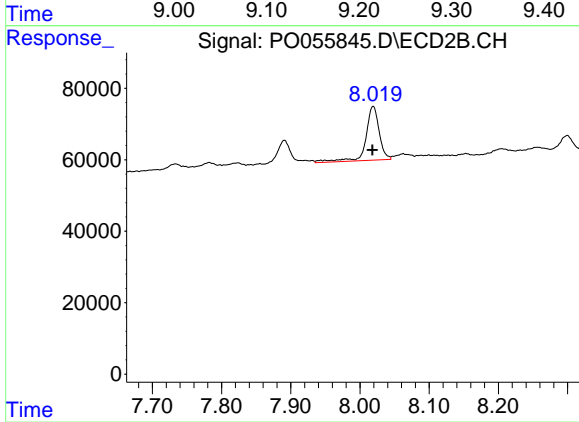
#39 AR-1262-4

R.T.: 7.526 min
 Delta R.T.: 0.000 min
 Response: 560529
 Conc: 136.88 ng/ml



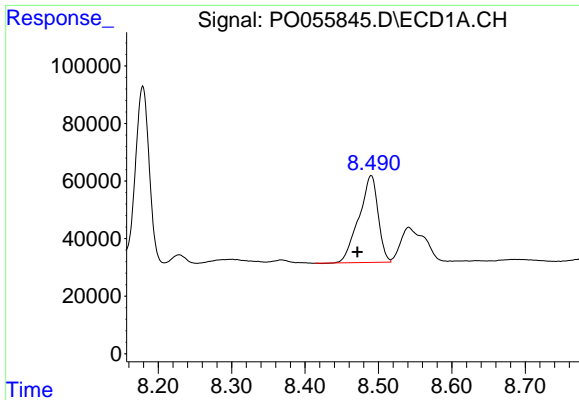
#40 AR-1262-5

R.T.: 9.182 min
 Delta R.T.: 0.001 min
 Response: 166176
 Conc: 91.99 ng/ml



#40 AR-1262-5

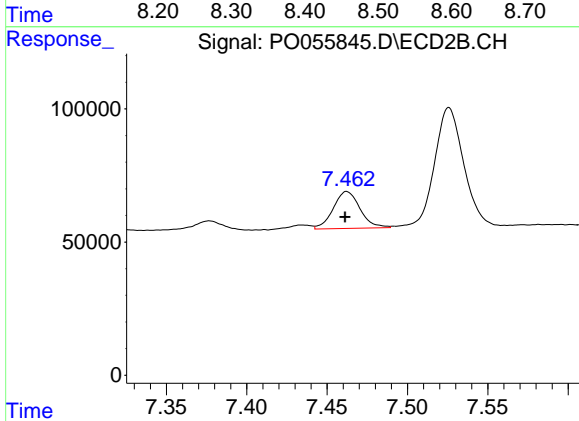
R.T.: 8.019 min
 Delta R.T.: 0.001 min
 Response: 202605
 Conc: 118.89 ng/ml



#41 AR-1268-1

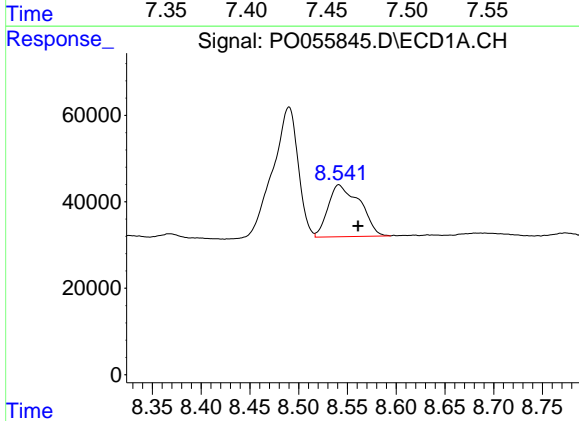
R.T.: 8.490 min
 Delta R.T.: 0.019 min
 Response: 546943
 Conc: 90.57 ng/ml

Instrument :
 ECD_O
 ClientSampleId :
 WC-1MSD



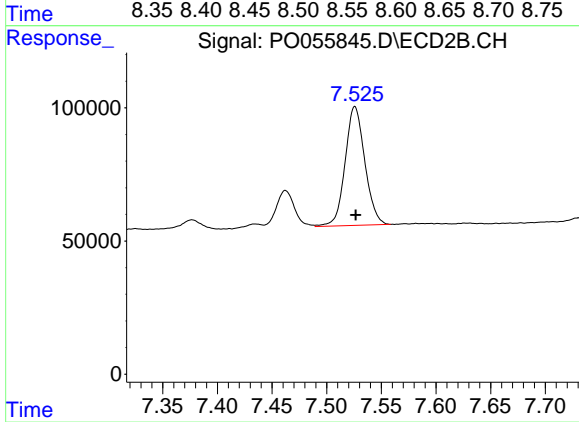
#41 AR-1268-1

R.T.: 7.462 min
 Delta R.T.: 0.001 min
 Response: 160577
 Conc: 23.18 ng/ml



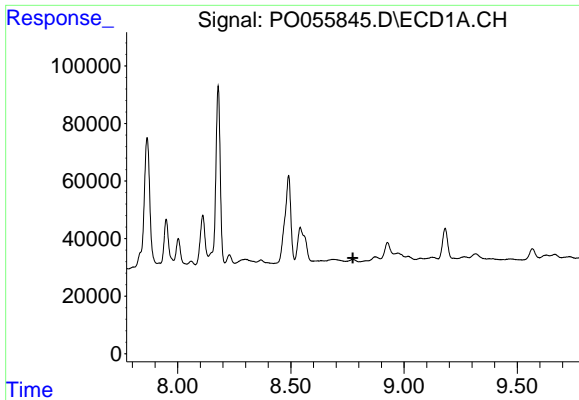
#42 AR-1268-2

R.T.: 8.541 min
 Delta R.T.: -0.020 min
 Response: 271836
 Conc: 49.66 ng/ml



#42 AR-1268-2

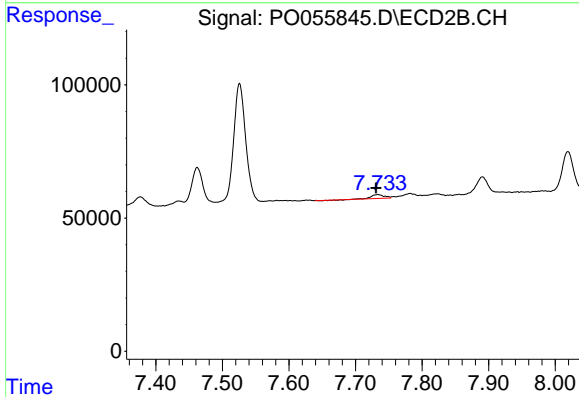
R.T.: 7.526 min
 Delta R.T.: 0.000 min
 Response: 560529
 Conc: 98.53 ng/ml



#43 AR-1268-3

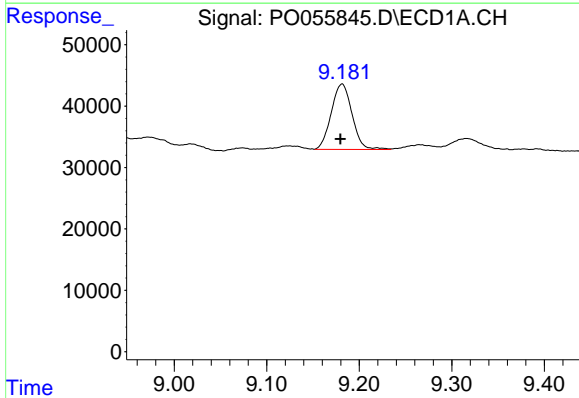
R.T.: 0.000 min
 Exp R.T.: 8.774 min
 Response: 0
 Conc: N.D.

Instrument :
 ECD_O
 ClientSampleId :
 WC-1MSD



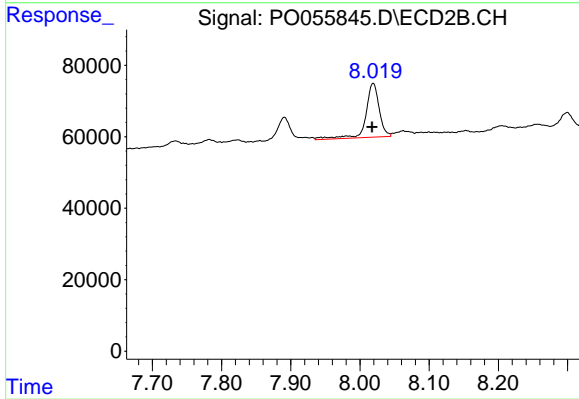
#43 AR-1268-3

R.T.: 7.734 min
 Delta R.T.: 0.003 min
 Response: 18012
 Conc: 3.81 ng/ml



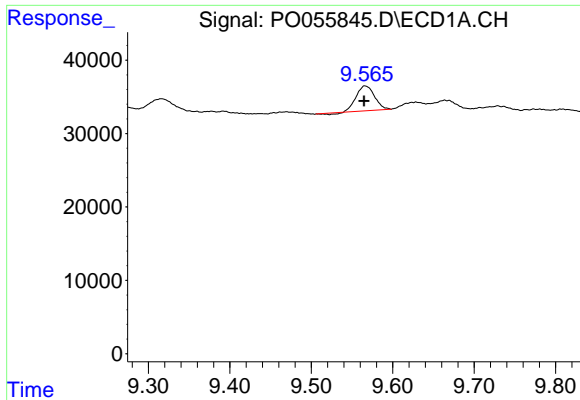
#44 AR-1268-4

R.T.: 9.182 min
 Delta R.T.: 0.002 min
 Response: 166176
 Conc: 84.69 ng/ml



#44 AR-1268-4

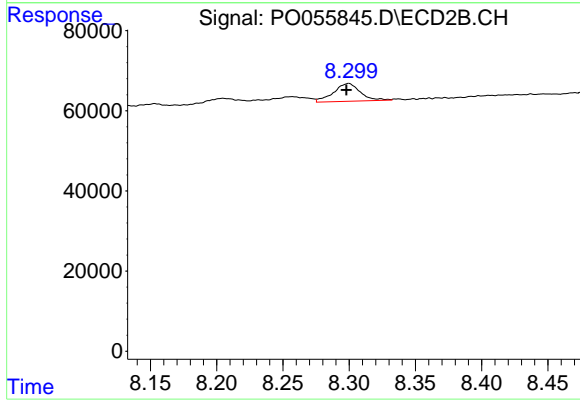
R.T.: 8.019 min
 Delta R.T.: 0.002 min
 Response: 202605
 Conc: 107.10 ng/ml



#45 AR-1268-5

R.T.: 9.566 min
Delta R.T.: 0.001 min
Response: 51727
Conc: 3.83 ng/ml

Instrument :
ECD_O
ClientSampleId :
WC-1MSD



#45 AR-1268-5

R.T.: 8.299 min
Delta R.T.: 0.002 min
Response: 62319
Conc: 5.12 ng/ml