

Data Path : Z:\pestpcbsrv\HPCHEM1\ECD_0\Data\P0050319\
 Data File : P0055846.D
 Signal(s) : Signal #1: ECD1A.CH Signal #2: ECD2B.CH
 Acq On : 03 May 2019 21:56
 Operator : SM/SJ
 Sample : K2650-04
 Misc :
 ALS Vial : 14 Sample Multiplier: 1

Instrument :
 ECD_0
 ClientSampleId :
 OILY-DEBRIS

Integration File signal 1: autoint1.e
 Integration File signal 2: autoint2.e
 Quant Time: May 03 23:01:36 2019
 Quant Method : Z:\pestpcbsrv\HPCHEM1\ECD_0\methods\P0050319.M
 Quant Title : GC EXTRACTABLES
 QLast Update : Fri May 03 15:20:04 2019
 Response via : Initial Calibration
 Integrator: ChemStation 6890 Scale Mode: Small noise peaks clipped

Volume Inj. : 2 µl
 Signal #1 Phase : ZB-MR1 Signal #2 Phase: ZB-MR2
 Signal #1 Info : 30Mx0.32mmx 0.50µ Signal #2 Info : 30M x 0.32mm x 0.25µm

Compound	RT#1	RT#2	Resp#1	Resp#2	ng/ml	ng/ml
System Monitoring Compounds						
1) SA Tetrachlo...	4.299	3.626	381916	764152	12.762	27.056 #
2) SA Decachlor...	9.882	8.549	391069	255128	10.452	9.434
Target Compounds						
3) L1 AR-1016-1	5.386	4.658	25528	493468	17.964	367.188 #
4) L1 AR-1016-2	0.000	4.658	0	493468	N.D.	270.253 #
5) L1 AR-1016-3	0.000	4.853	0	453955	N.D.	452.991 #
6) L1 AR-1016-4	0.000	4.907	0	258309	N.D.	317.475 #
7) L1 AR-1016-5	0.000	5.110	0	294758	N.D.	267.752 #
9) L2 AR-1221-2	0.000	3.909	0	96407	N.D.	347.601 #
10) L2 AR-1221-3	0.000	3.909	0	96407	N.D.	108.506 #
11) L3 AR-1232-1	0.000	3.909	0	96407	N.D.	130.266 #
12) L3 AR-1232-2	0.000	4.658	0	493468	N.D.	563.031 #
13) L3 AR-1232-3	0.000	4.853	0	453955	N.D.	946.390 #
14) L3 AR-1232-4	0.000	4.956	0	414559	N.D.	975.977 #
15) L3 AR-1232-5	5.733	5.110	16010	294758	36.875	608.241 #
16) L4 AR-1242-1	5.386	4.658	25528	493468	21.084	440.352 #
17) L4 AR-1242-2	0.000	4.658	0	493468	N.D.	324.341 #
18) L4 AR-1242-3	0.000	4.853	0	453955	N.D.	524.188 #
19) L4 AR-1242-4	0.000	4.956	0	414559	N.D.	494.877 #
20) L4 AR-1242-5	6.335	5.459	15766	54134	14.412	45.097 #
21) L5 AR-1248-1	5.386	4.658	25528	493468	28.204	588.493 #
22) L5 AR-1248-2	5.733	4.907	16010	258309	12.005	235.090 #
23) L5 AR-1248-3	0.000	4.956	0	414559	N.D.	365.203 #
24) L5 AR-1248-4	6.307	5.110	35782	294758	20.520	209.915 #
25) L5 AR-1248-5	6.335	5.482	15766	152410	9.439	101.762 #
26) L6 AR-1254-1	6.307	5.459	35782	54134	17.040	20.227
27) L6 AR-1254-2	6.526	5.585	46520	210324	14.017	86.103 #
28) L6 AR-1254-3	6.889	6.028	67894	151863	18.675	38.276 #
29) L6 AR-1254-4	7.172	6.213	69166	62955	25.422	23.480 #
30) L6 AR-1254-5	7.584	6.658	90988	217149	31.746	60.008 #
31) L7 AR-1260-1	7.048	6.129	43094	24235	19.955	11.000 #
32) L7 AR-1260-2	7.305	6.344	25960	-8938	9.913	N.D. #
33) L7 AR-1260-3	7.654	6.498	91454	40648	45.727	16.311 #
34) L7 AR-1260-4	7.871	0.000	28897	0	12.496	N.D. #
36) L8 AR-1262-1	7.654	6.658	91454	217149	28.527	52.953 #
45) L9 AR-1268-5	0.000	8.238	0	6422	N.D.	0.527 #

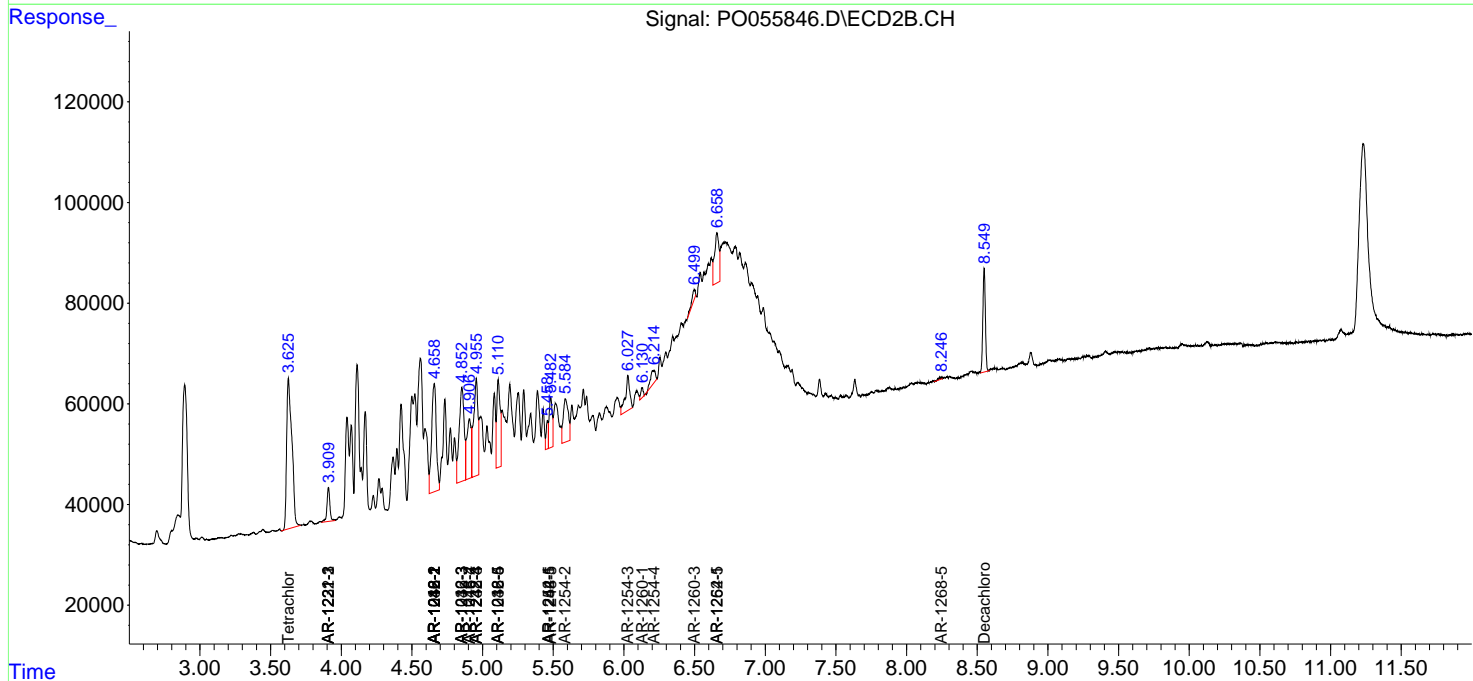
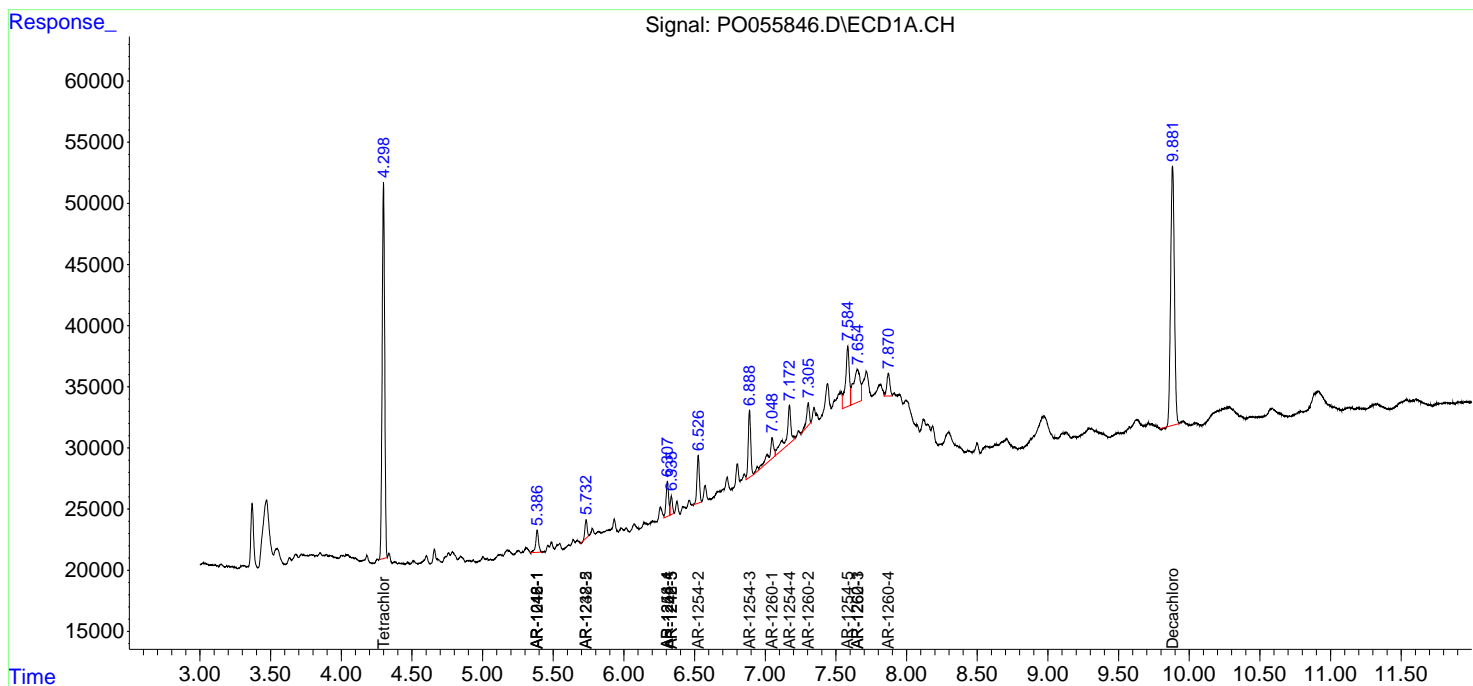
(f)=RT Delta > 1/2 Window (#)=Amounts differ by > 25% (m)=manual int.

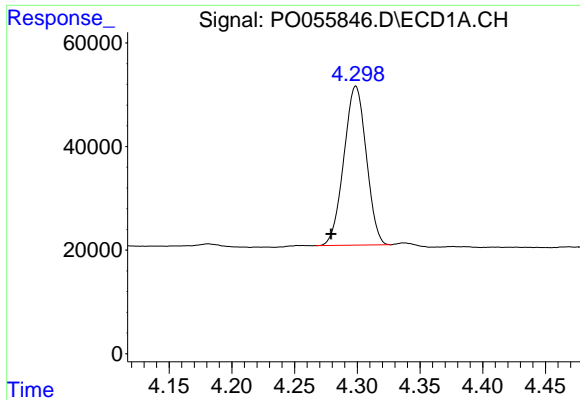
Data Path : Z:\pestpcbsrv\HPCHEM1\ECD_0\Data\P0050319\
 Data File : P0055846.D
 Signal(s) : Signal #1: ECD1A.CH Signal #2: ECD2B.CH
 Acq On : 03 May 2019 21:56
 Operator : SM/SJ
 Sample : K2650-04
 Misc :
 ALS Vial : 14 Sample Multiplier: 1

Instrument :
 ECD_O
 ClientSampled :
 OILY-DEBRIS

Integration File signal 1: autoint1.e
 Integration File signal 2: autoint2.e
 Quant Time: May 03 23:01:36 2019
 Quant Method : Z:\pestpcbsrv\HPCHEM1\ECD_0\methods\P0050319.M
 Quant Title : GC EXTRACTABLES
 QLast Update : Fri May 03 15:20:04 2019
 Response via : Initial Calibration
 Integrator: ChemStation 6890 Scale Mode: Small noise peaks clipped

Volume Inj. : 2 µl
 Signal #1 Phase : ZB-MR1 Signal #2 Phase: ZB-MR2
 Signal #1 Info : 30Mx0.32mmx 0.50µ Signal #2 Info : 30M x 0.32mm x 0.25µm

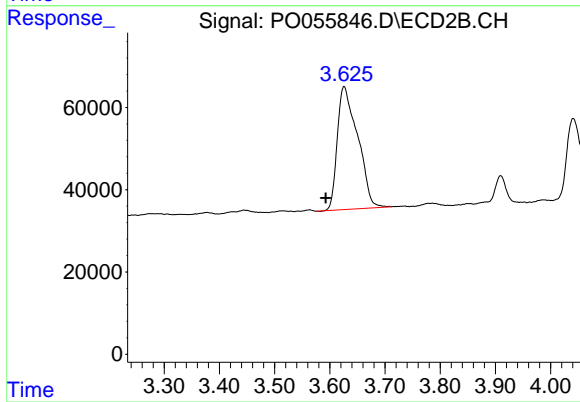




#1 Tetrachloro-m-xylene

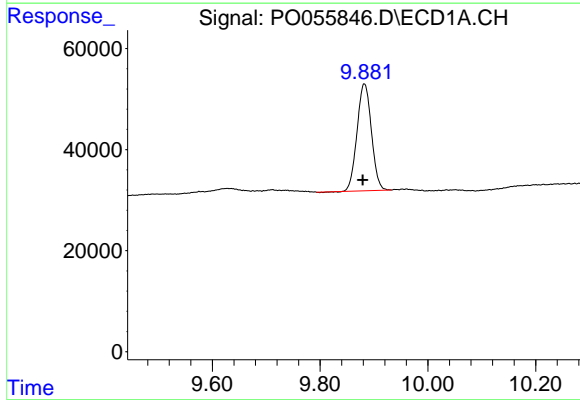
R.T.: 4.299 min
 Delta R.T.: 0.020 min
 Response: 381916
 Conc: 12.76 ng/ml

Instrument :
 ECD_O
 ClientSampleId :
 OILY-DEBRIS



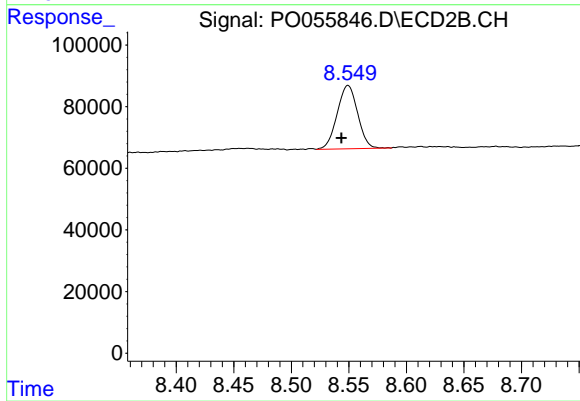
#1 Tetrachloro-m-xylene

R.T.: 3.626 min
 Delta R.T.: 0.033 min
 Response: 764152
 Conc: 27.06 ng/ml



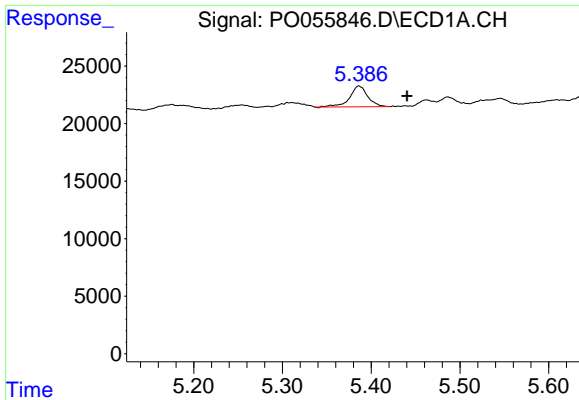
#2 Decachlorobiphenyl

R.T.: 9.882 min
 Delta R.T.: 0.003 min
 Response: 391069
 Conc: 10.45 ng/ml



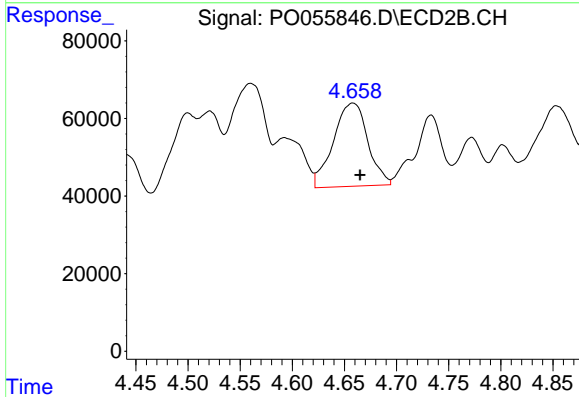
#2 Decachlorobiphenyl

R.T.: 8.549 min
 Delta R.T.: 0.006 min
 Response: 255128
 Conc: 9.43 ng/ml

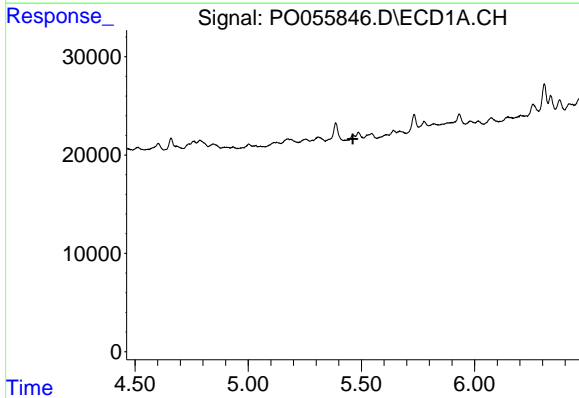


#3 AR-1016-1
 R.T.: 5.386 min
 Delta R.T.: -0.054 min
 Response: 25528
 Conc: 17.96 ng/ml

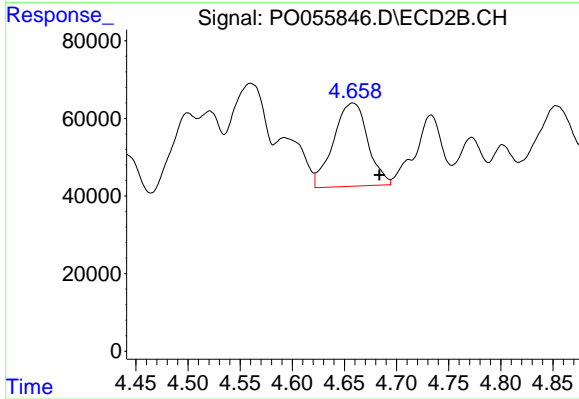
Instrument :
 ECD_O
 ClientSampleId :
 OILY-DEBRIS



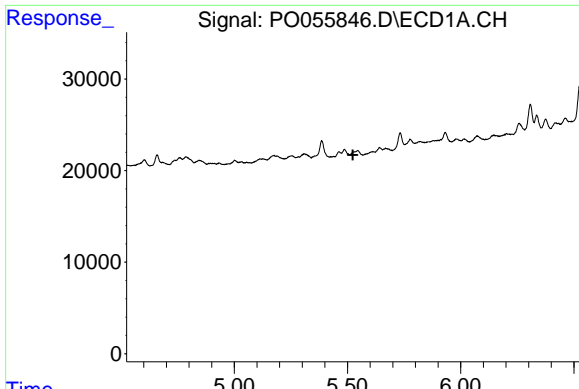
#3 AR-1016-1
 R.T.: 4.658 min
 Delta R.T.: -0.007 min
 Response: 493468
 Conc: 367.19 ng/ml



#4 AR-1016-2
 R.T.: 0.000 min
 Exp R.T. : 5.463 min
 Response: 0
 Conc: N.D.



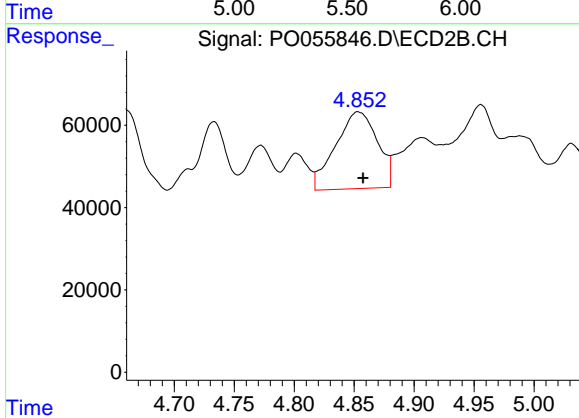
#4 AR-1016-2
 R.T.: 4.658 min
 Delta R.T.: -0.026 min
 Response: 493468
 Conc: 270.25 ng/ml



#5 AR-1016-3

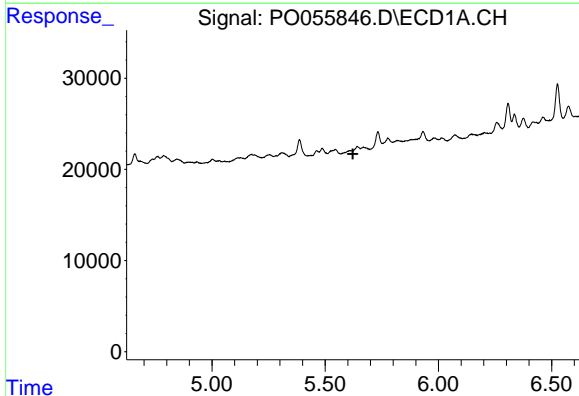
R.T.: 0.000 min
 Exp R.T. : 5.524 min
 Response: 0
 Conc: N.D.

Instrument :
 ECD_O
 ClientSampleId :
 OILY-DEBRIS



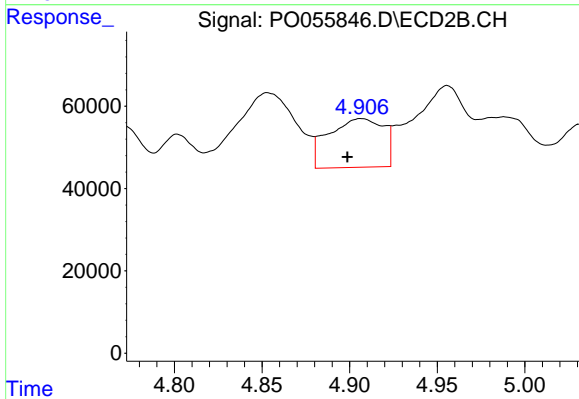
#5 AR-1016-3

R.T.: 4.853 min
 Delta R.T.: -0.004 min
 Response: 453955
 Conc: 452.99 ng/ml



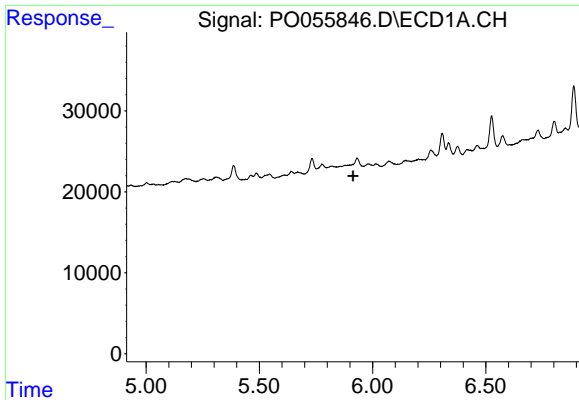
#6 AR-1016-4

R.T.: 0.000 min
 Exp R.T. : 5.622 min
 Response: 0
 Conc: N.D.



#6 AR-1016-4

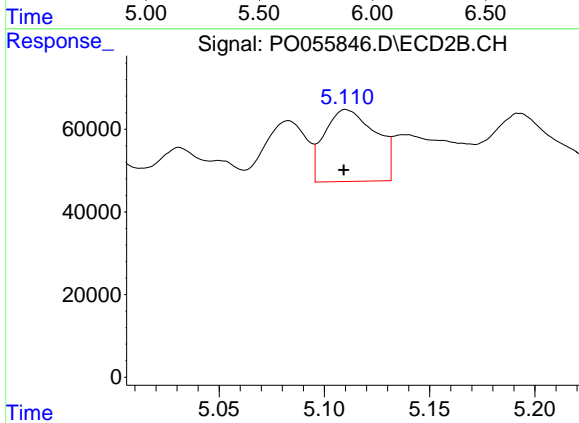
R.T.: 4.907 min
 Delta R.T.: 0.008 min
 Response: 258309
 Conc: 317.48 ng/ml



#7 AR-1016-5

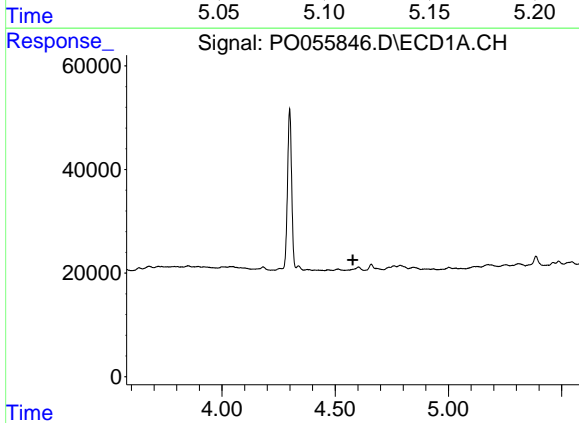
R.T.: 0.000 min
 Exp R.T.: 5.914 min
 Response: 0
 Conc: N.D.

Instrument :
 ECD_O
 ClientSampleId :
 OILY-DEBRIS



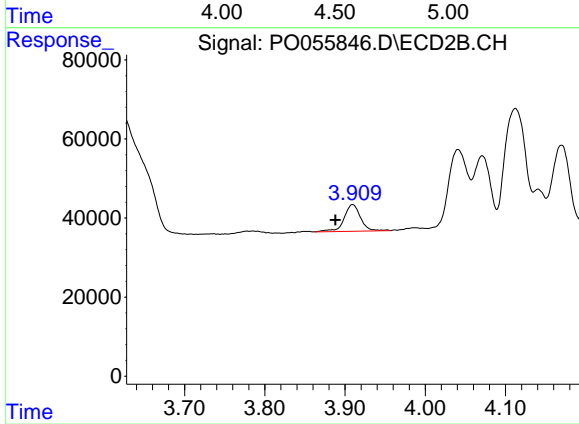
#7 AR-1016-5

R.T.: 5.110 min
 Delta R.T.: 0.001 min
 Response: 294758
 Conc: 267.75 ng/ml



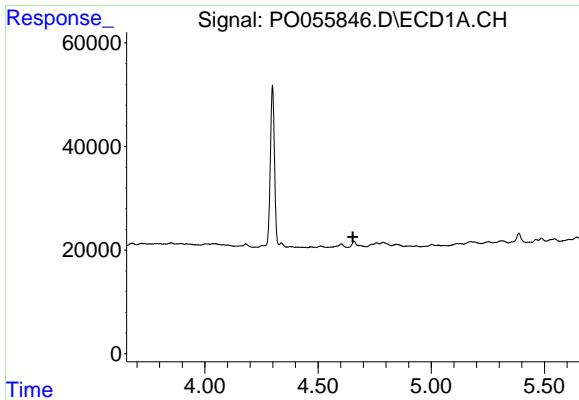
#9 AR-1221-2

R.T.: 0.000 min
 Exp R.T.: 4.578 min
 Response: 0
 Conc: N.D.



#9 AR-1221-2

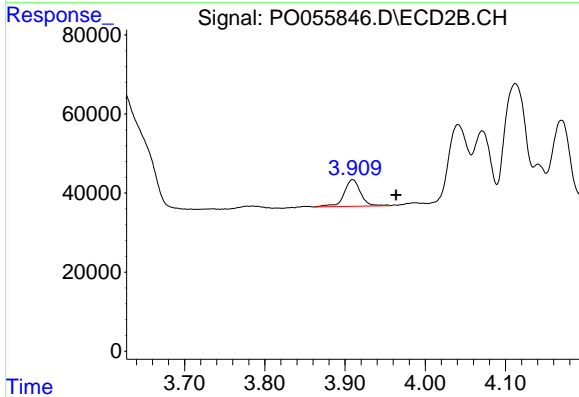
R.T.: 3.909 min
 Delta R.T.: 0.021 min
 Response: 96407
 Conc: 347.60 ng/ml



#10 AR-1221-3

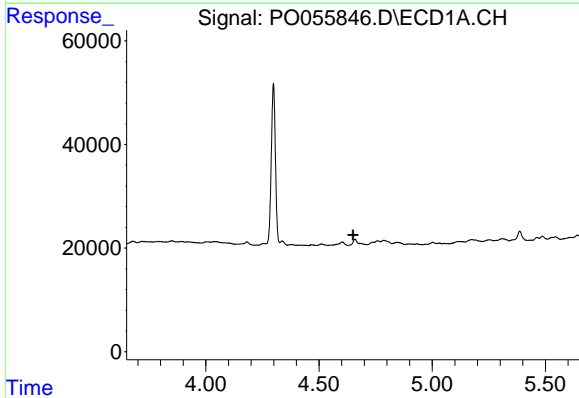
R.T.: 0.000 min
 Exp R.T. : 4.654 min
 Response: 0
 Conc: N.D.

Instrument :
 ECD_O
 ClientSampleId :
 OILY-DEBRIS



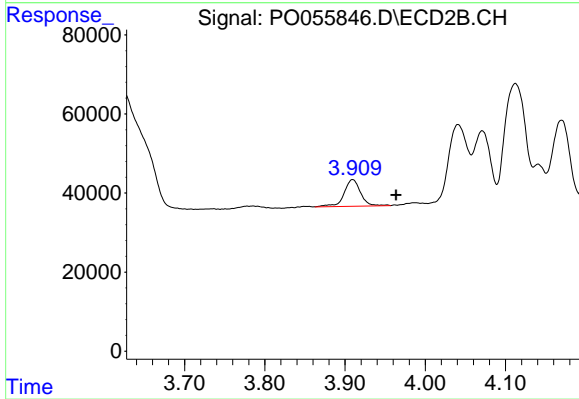
#10 AR-1221-3

R.T.: 3.909 min
 Delta R.T.: -0.054 min
 Response: 96407
 Conc: 108.51 ng/ml



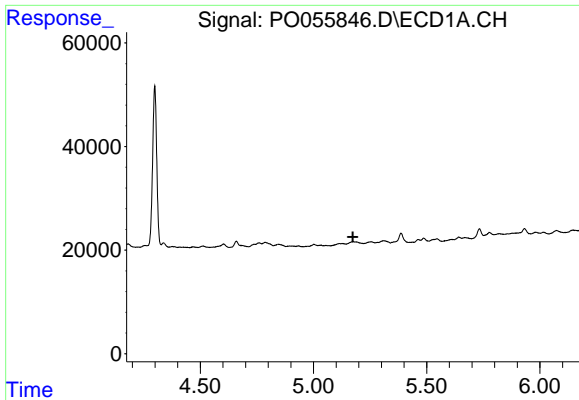
#11 AR-1232-1

R.T.: 0.000 min
 Exp R.T. : 4.650 min
 Response: 0
 Conc: N.D.



#11 AR-1232-1

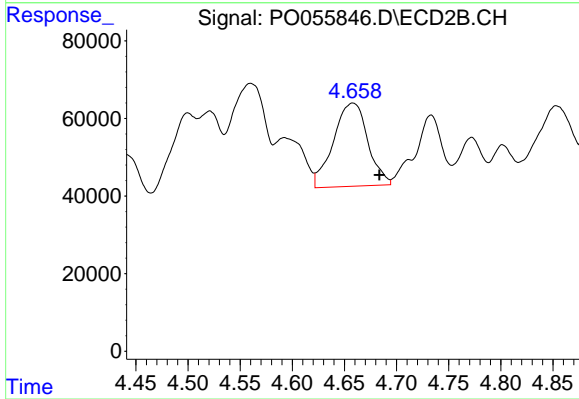
R.T.: 3.909 min
 Delta R.T.: -0.054 min
 Response: 96407
 Conc: 130.27 ng/ml



#12 AR-1232-2

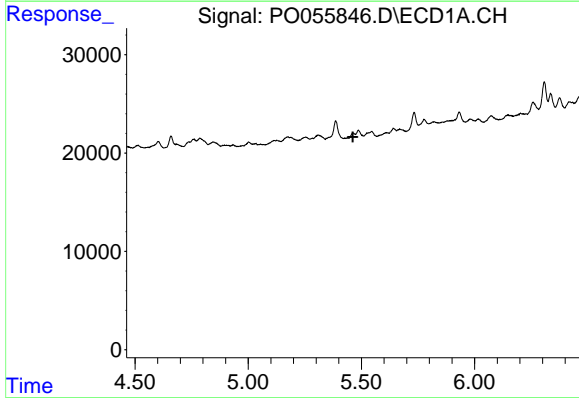
R.T.: 0.000 min
 Exp R.T. : 5.174 min
 Response: 0
 Conc: N.D.

Instrument :
 ECD_O
 ClientSampleId :
 OILY-DEBRIS



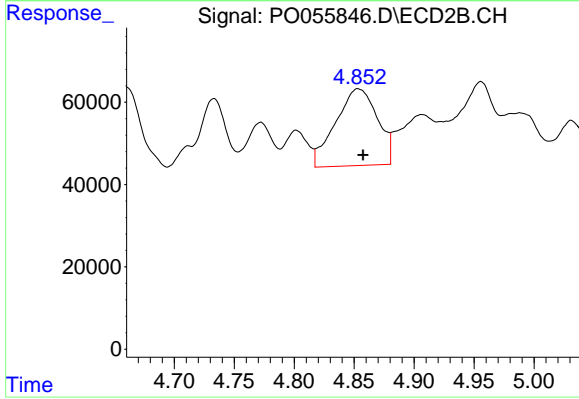
#12 AR-1232-2

R.T.: 4.658 min
 Delta R.T.: -0.026 min
 Response: 493468
 Conc: 563.03 ng/ml



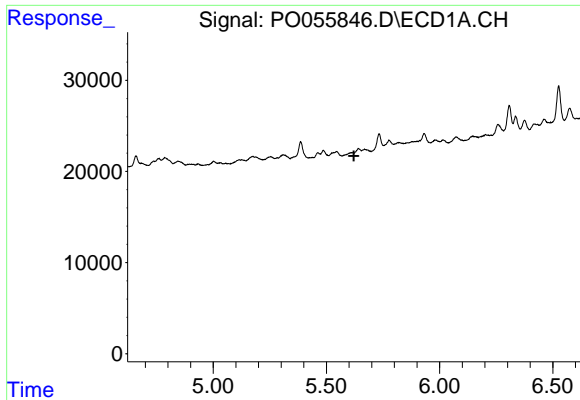
#13 AR-1232-3

R.T.: 0.000 min
 Exp R.T. : 5.462 min
 Response: 0
 Conc: N.D.



#13 AR-1232-3

R.T.: 4.853 min
 Delta R.T.: -0.004 min
 Response: 453955
 Conc: 946.39 ng/ml

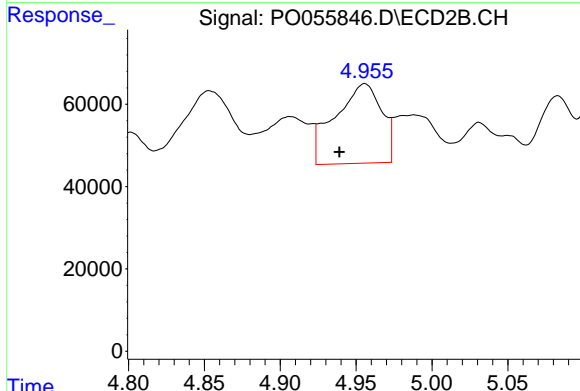


#14 AR-1232-4

R.T.: 0.000 min
 Exp R.T.: 5.622 min
 Response: 0
 Conc: N.D.

Instrument :
 ECD_O
ClientSampleId :
 OILY-DEBRIS

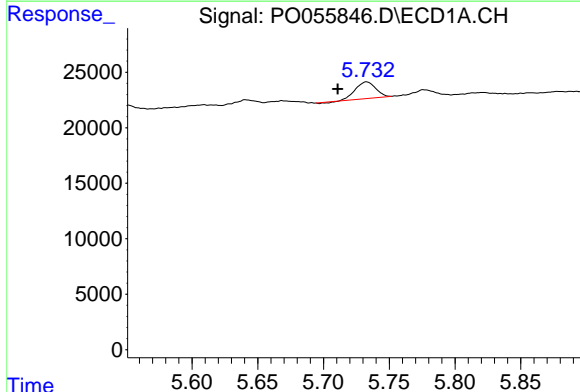
Time



#14 AR-1232-4

R.T.: 4.956 min
 Delta R.T.: 0.017 min
 Response: 414559
 Conc: 975.98 ng/ml

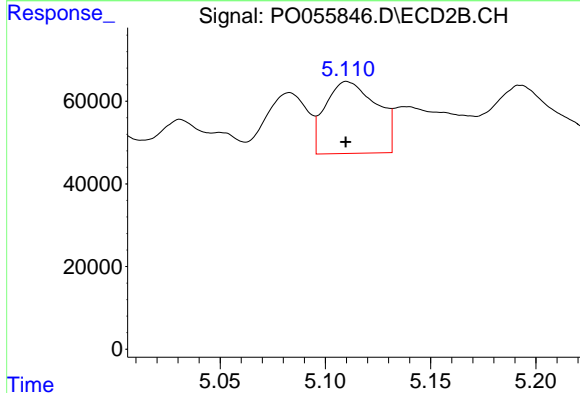
Time



#15 AR-1232-5

R.T.: 5.733 min
 Delta R.T.: 0.022 min
 Response: 16010
 Conc: 36.88 ng/ml

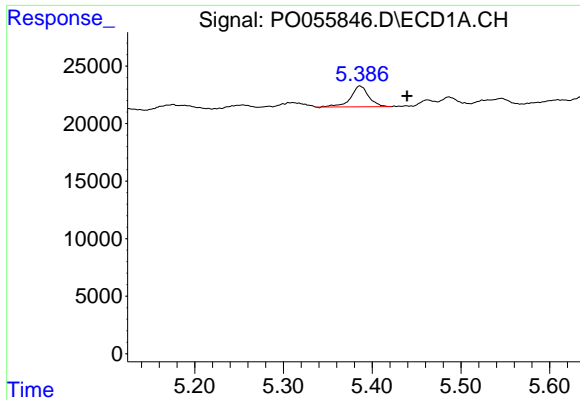
Time



#15 AR-1232-5

R.T.: 5.110 min
 Delta R.T.: 0.000 min
 Response: 294758
 Conc: 608.24 ng/ml

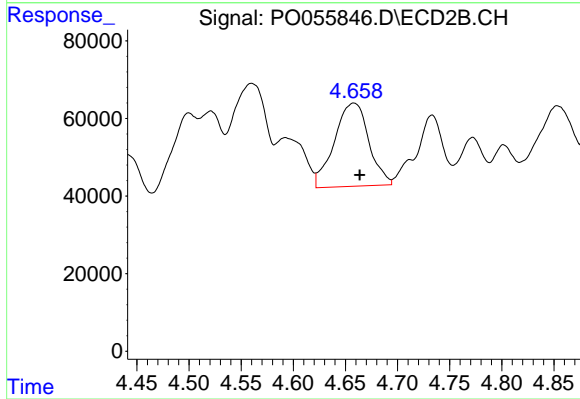
Time



#16 AR-1242-1

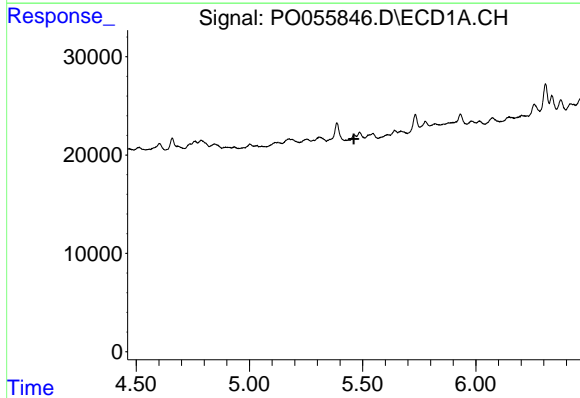
R.T.: 5.386 min
 Delta R.T.: -0.053 min
 Response: 25528
 Conc: 21.08 ng/ml

Instrument :
 ECD_O
 ClientSampleId :
 OILY-DEBRIS



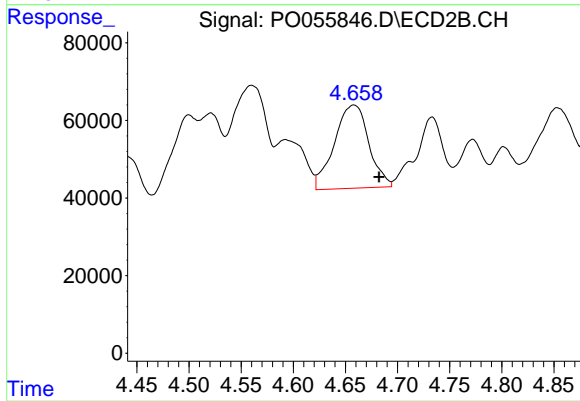
#16 AR-1242-1

R.T.: 4.658 min
 Delta R.T.: -0.006 min
 Response: 493468
 Conc: 440.35 ng/ml



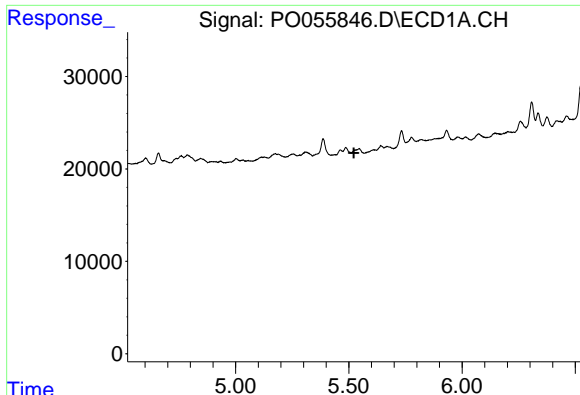
#17 AR-1242-2

R.T.: 0.000 min
 Exp R.T. : 5.462 min
 Response: 0
 Conc: N.D.



#17 AR-1242-2

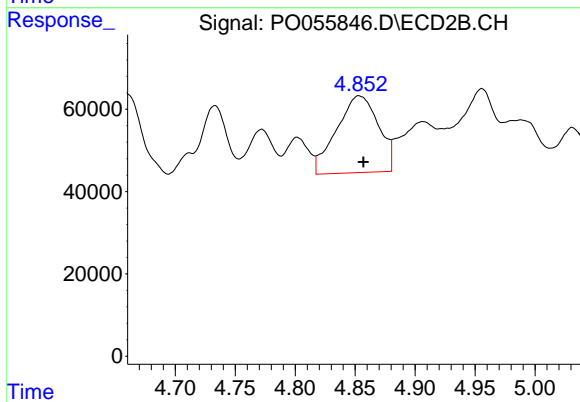
R.T.: 4.658 min
 Delta R.T.: -0.024 min
 Response: 493468
 Conc: 324.34 ng/ml



#18 AR-1242-3

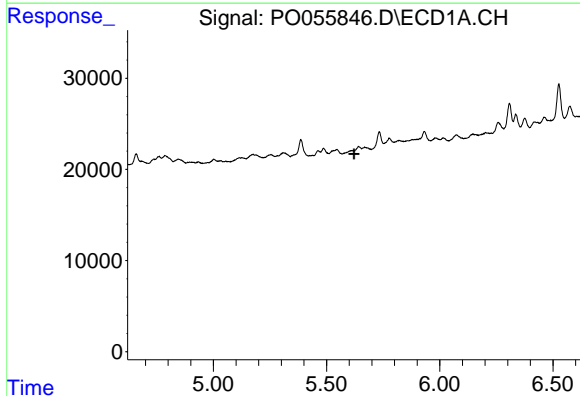
R.T.: 0.000 min
 Exp R.T. : 5.522 min
 Response: 0
 Conc: N.D.

Instrument :
 ECD_O
 ClientSampleId :
 OILY-DEBRIS



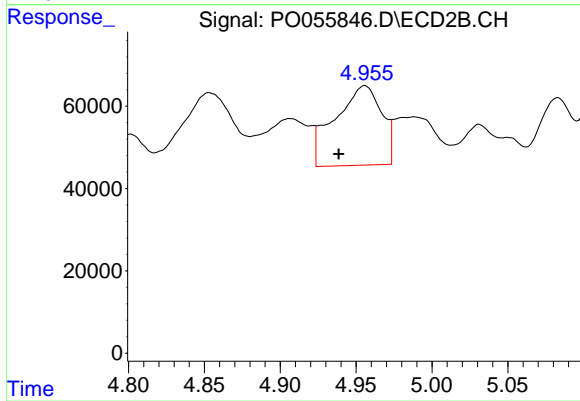
#18 AR-1242-3

R.T.: 4.853 min
 Delta R.T.: -0.004 min
 Response: 453955
 Conc: 524.19 ng/ml



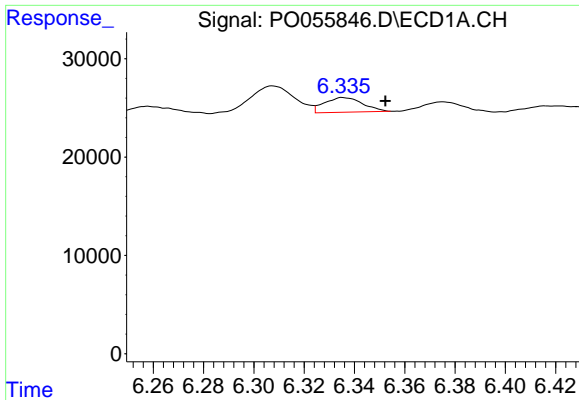
#19 AR-1242-4

R.T.: 0.000 min
 Exp R.T. : 5.621 min
 Response: 0
 Conc: N.D.



#19 AR-1242-4

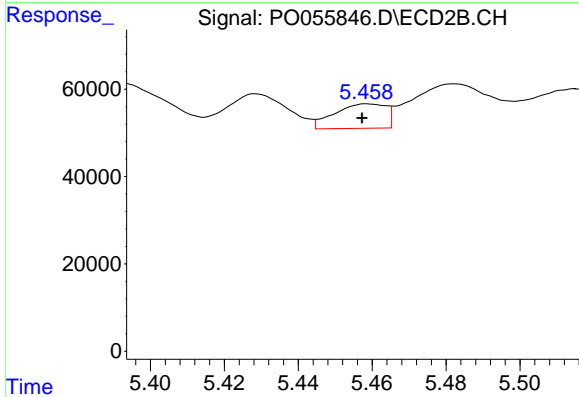
R.T.: 4.956 min
 Delta R.T.: 0.017 min
 Response: 414559
 Conc: 494.88 ng/ml



#20 AR-1242-5

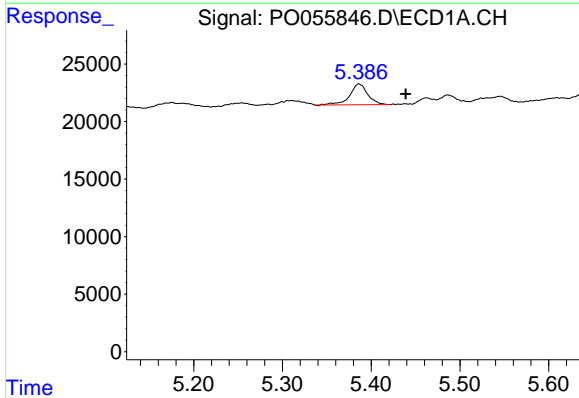
R.T.: 6.335 min
 Delta R.T.: -0.017 min
 Response: 15766
 Conc: 14.41 ng/ml

Instrument :
 ECD_O
 ClientSampleId :
 OILY-DEBRIS



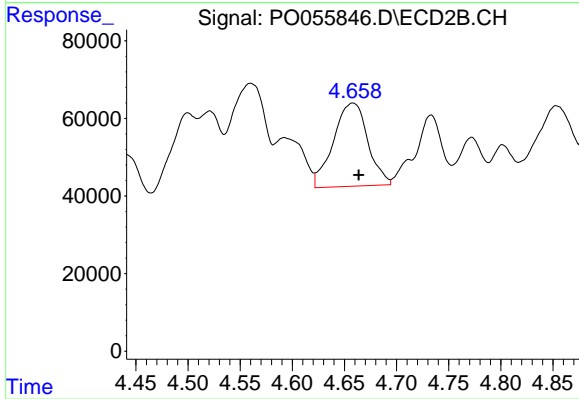
#20 AR-1242-5

R.T.: 5.459 min
 Delta R.T.: 0.002 min
 Response: 54134
 Conc: 45.10 ng/ml



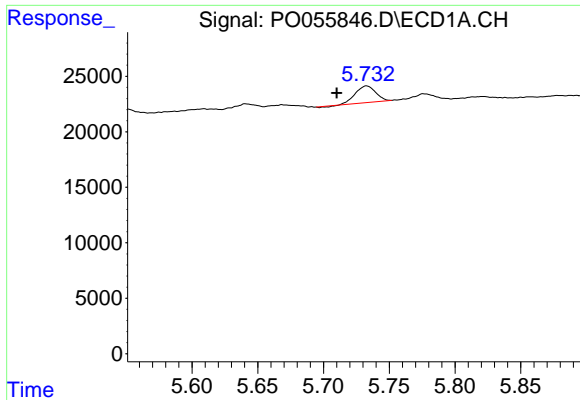
#21 AR-1248-1

R.T.: 5.386 min
 Delta R.T.: -0.053 min
 Response: 25528
 Conc: 28.20 ng/ml



#21 AR-1248-1

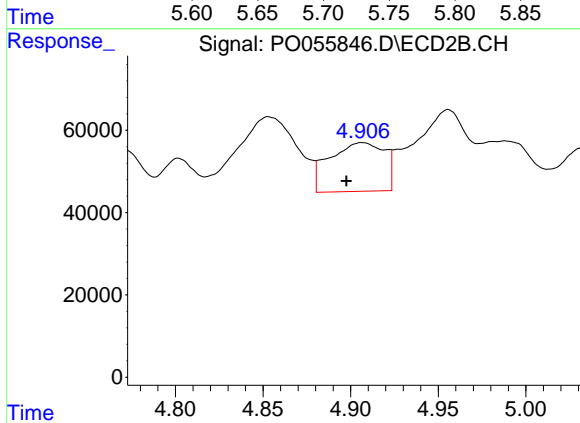
R.T.: 4.658 min
 Delta R.T.: -0.006 min
 Response: 493468
 Conc: 588.49 ng/ml



#22 AR-1248-2

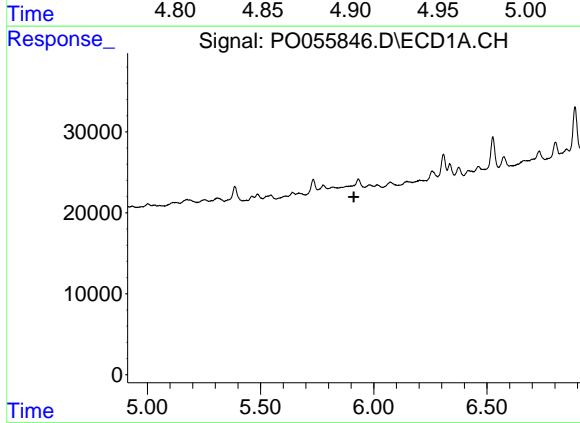
R.T.: 5.733 min
 Delta R.T.: 0.023 min
 Response: 16010
 Conc: 12.01 ng/ml

Instrument :
 ECD_O
 ClientSampleId :
 OILY-DEBRIS



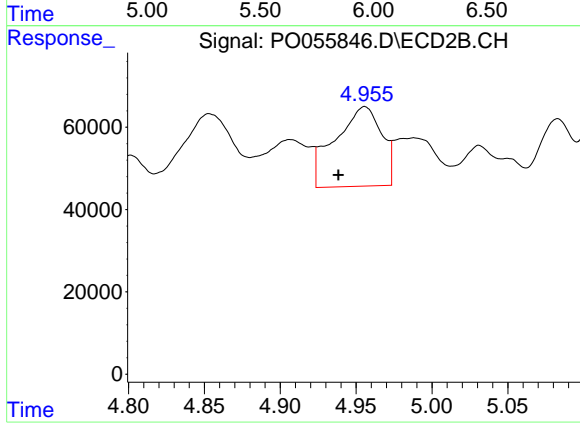
#22 AR-1248-2

R.T.: 4.907 min
 Delta R.T.: 0.009 min
 Response: 258309
 Conc: 235.09 ng/ml



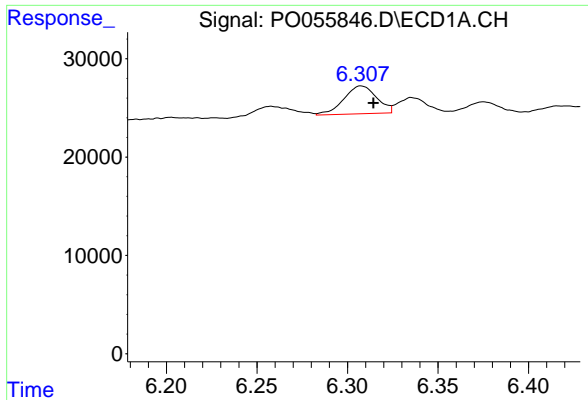
#23 AR-1248-3

R.T.: 0.000 min
 Exp R.T. : 5.912 min
 Response: 0
 Conc: N.D.



#23 AR-1248-3

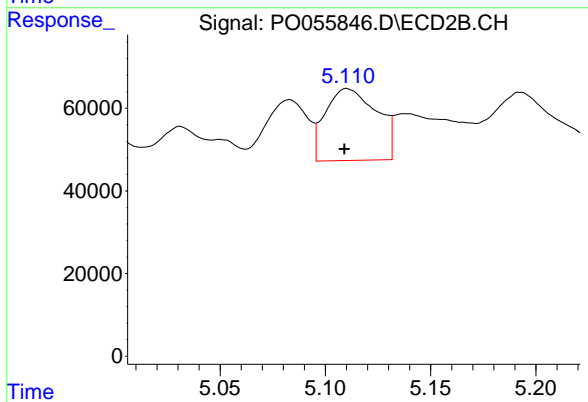
R.T.: 4.956 min
 Delta R.T.: 0.017 min
 Response: 414559
 Conc: 365.20 ng/ml



#24 AR-1248-4

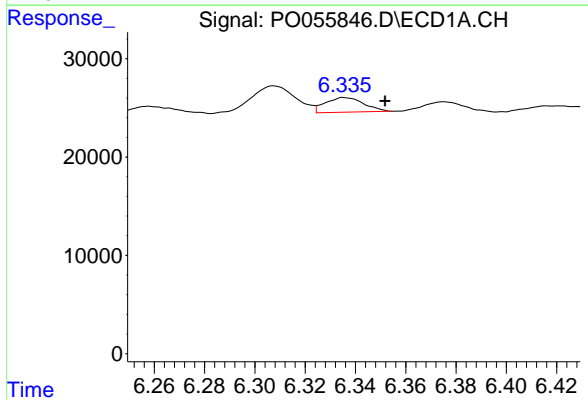
R.T.: 6.307 min
 Delta R.T.: -0.007 min
 Response: 35782
 Conc: 20.52 ng/ml

Instrument :
 ECD_O
 ClientSampleId :
 OILY-DEBRIS



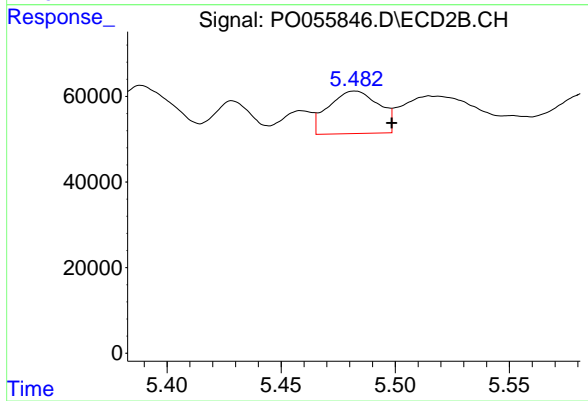
#24 AR-1248-4

R.T.: 5.110 min
 Delta R.T.: 0.001 min
 Response: 294758
 Conc: 209.92 ng/ml



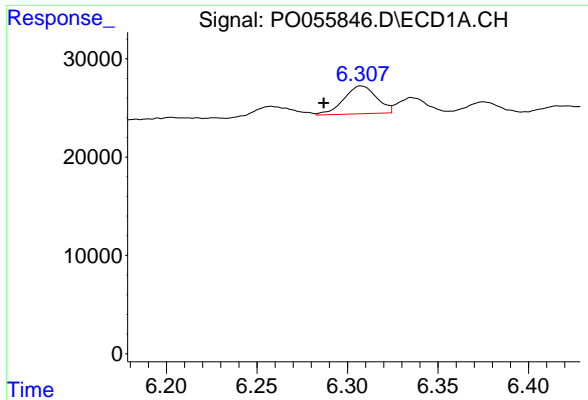
#25 AR-1248-5

R.T.: 6.335 min
 Delta R.T.: -0.016 min
 Response: 15766
 Conc: 9.44 ng/ml



#25 AR-1248-5

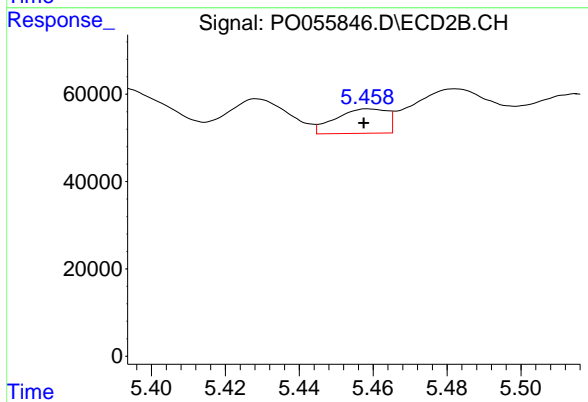
R.T.: 5.482 min
 Delta R.T.: -0.016 min
 Response: 152410
 Conc: 101.76 ng/ml



#26 AR-1254-1

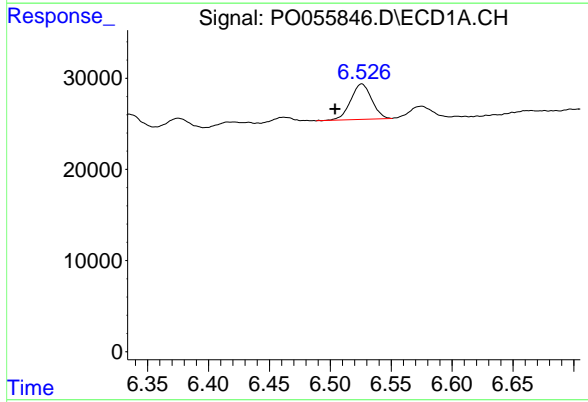
R.T.: 6.307 min
 Delta R.T.: 0.021 min
 Response: 35782
 Conc: 17.04 ng/ml

Instrument :
 ECD_O
 ClientSampleId :
 OILY-DEBRIS



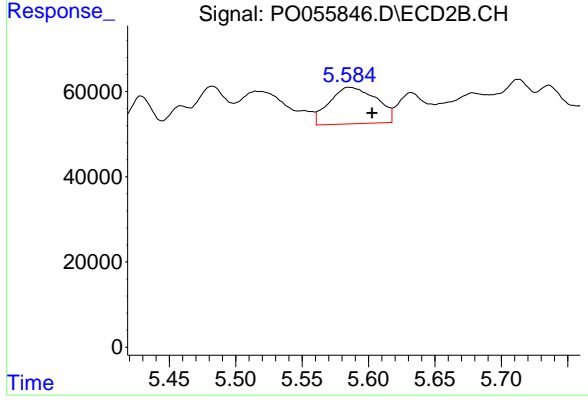
#26 AR-1254-1

R.T.: 5.459 min
 Delta R.T.: 0.002 min
 Response: 54134
 Conc: 20.23 ng/ml



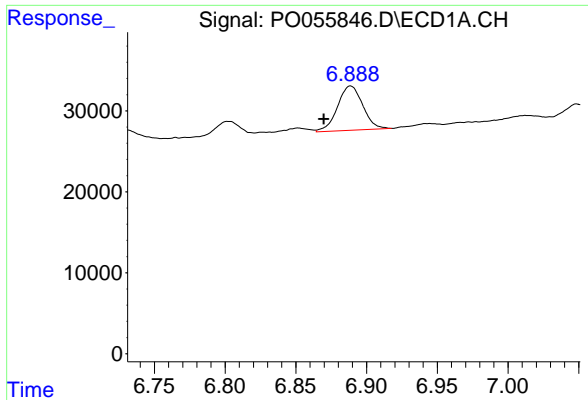
#27 AR-1254-2

R.T.: 6.526 min
 Delta R.T.: 0.022 min
 Response: 46520
 Conc: 14.02 ng/ml



#27 AR-1254-2

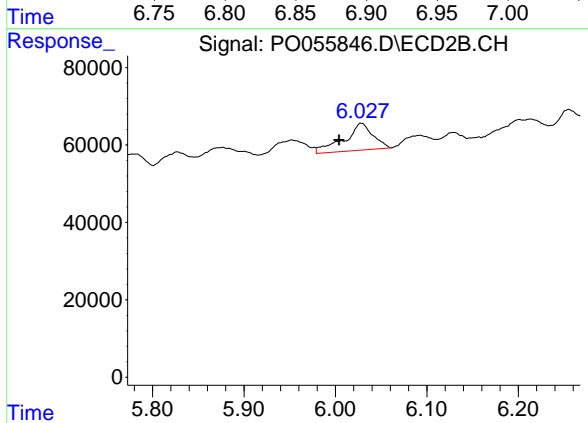
R.T.: 5.585 min
 Delta R.T.: -0.017 min
 Response: 210324
 Conc: 86.10 ng/ml



#28 AR-1254-3

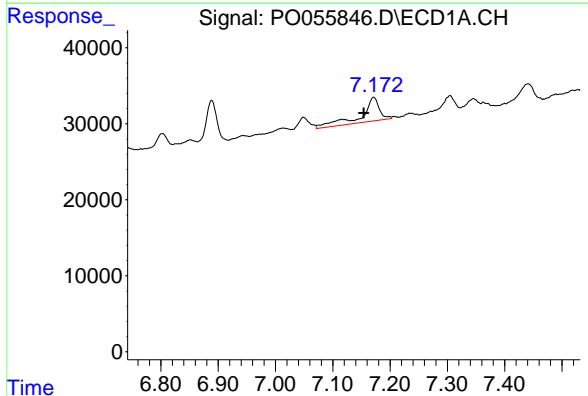
R.T.: 6.889 min
 Delta R.T.: 0.019 min
 Response: 67894
 Conc: 18.68 ng/ml

Instrument :
 ECD_O
 ClientSampleId :
 OILY-DEBRIS



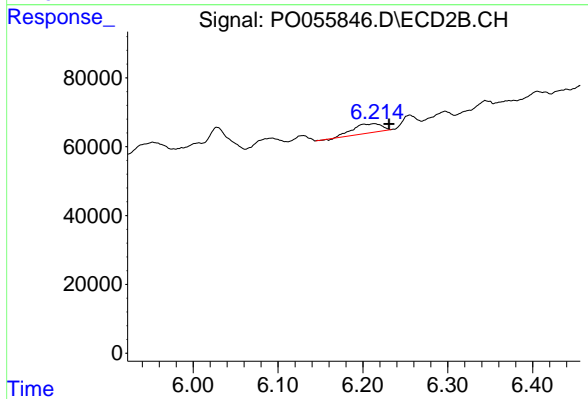
#28 AR-1254-3

R.T.: 6.028 min
 Delta R.T.: 0.024 min
 Response: 151863
 Conc: 38.28 ng/ml



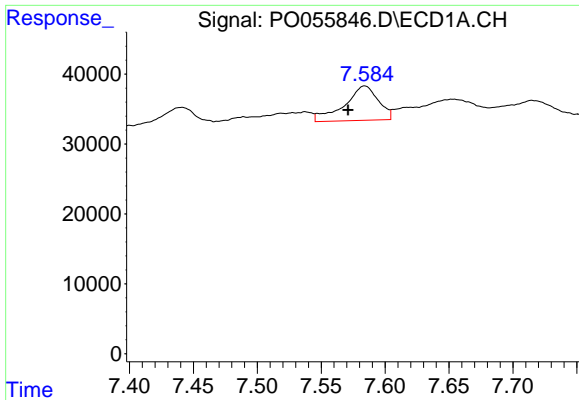
#29 AR-1254-4

R.T.: 7.172 min
 Delta R.T.: 0.018 min
 Response: 69166
 Conc: 25.42 ng/ml



#29 AR-1254-4

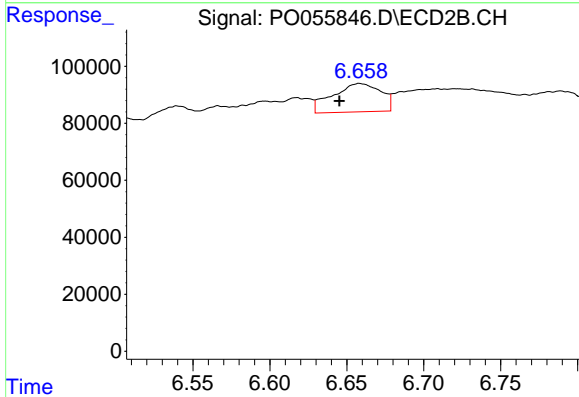
R.T.: 6.213 min
 Delta R.T.: -0.017 min
 Response: 62955
 Conc: 23.48 ng/ml



#30 AR-1254-5

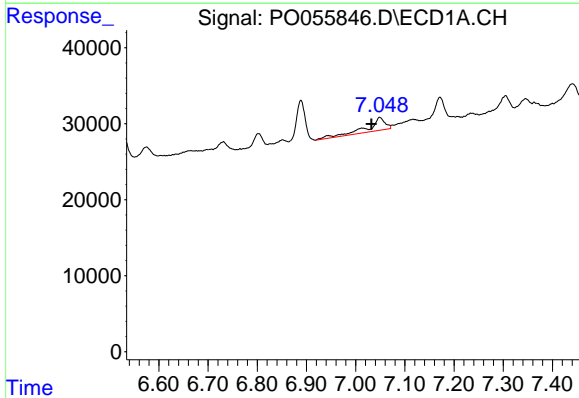
R.T.: 7.584 min
 Delta R.T.: 0.013 min
 Response: 90988
 Conc: 31.75 ng/ml

Instrument :
 ECD_O
ClientSampled :
 OILY-DEBRIS



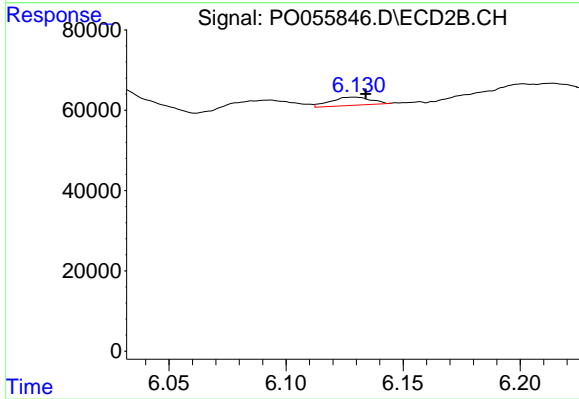
#30 AR-1254-5

R.T.: 6.658 min
 Delta R.T.: 0.013 min
 Response: 217149
 Conc: 60.01 ng/ml



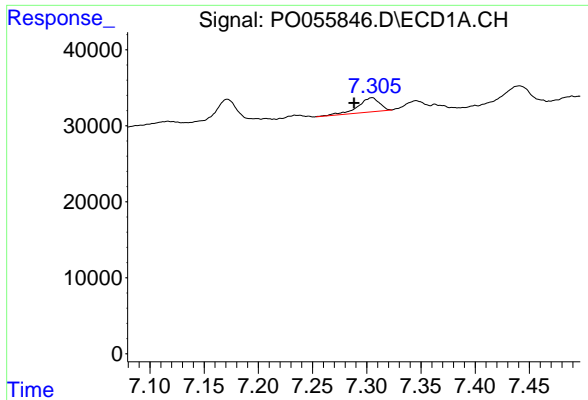
#31 AR-1260-1

R.T.: 7.048 min
 Delta R.T.: 0.016 min
 Response: 43094
 Conc: 19.96 ng/ml



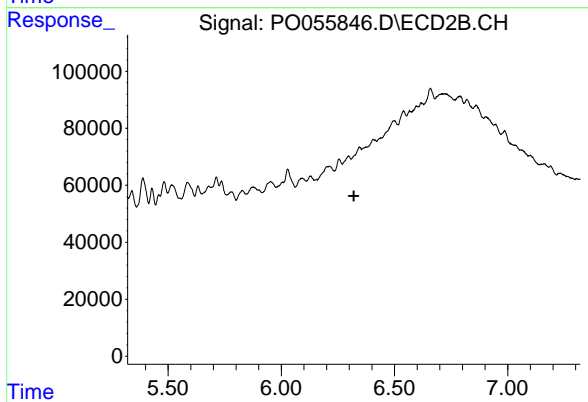
#31 AR-1260-1

R.T.: 6.129 min
 Delta R.T.: -0.005 min
 Response: 24235
 Conc: 11.00 ng/ml

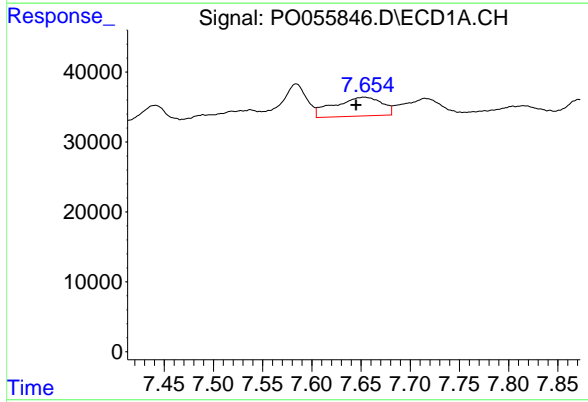


#32 AR-1260-2
 R.T.: 7.305 min
 Delta R.T.: 0.017 min
 Response: 25960
 Conc: 9.91 ng/ml

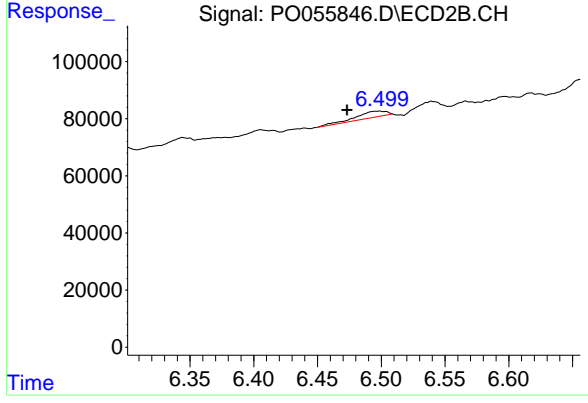
Instrument :
 ECD_O
 ClientSampleId :
 OILY-DEBRIS



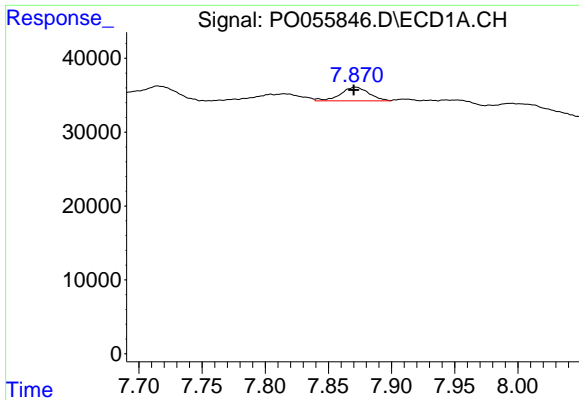
#32 AR-1260-2
 R.T.: 6.344 min
 Delta R.T.: 0.024 min
 Response: -8938
 Conc: N.D.



#33 AR-1260-3
 R.T.: 7.654 min
 Delta R.T.: 0.009 min
 Response: 91454
 Conc: 45.73 ng/ml

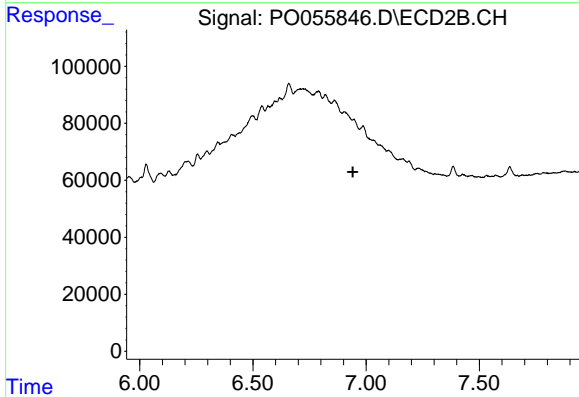


#33 AR-1260-3
 R.T.: 6.498 min
 Delta R.T.: 0.025 min
 Response: 40648
 Conc: 16.31 ng/ml

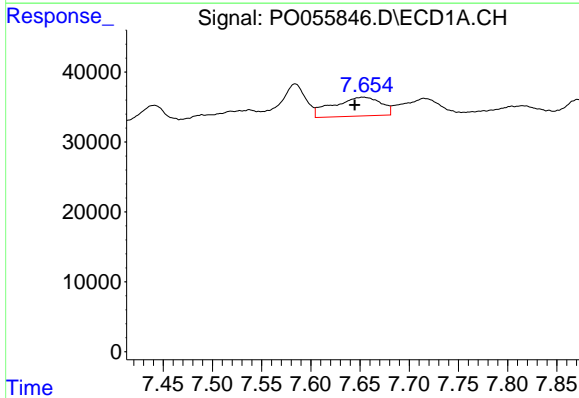


#34 AR-1260-4
 R.T.: 7.871 min
 Delta R.T.: 0.000 min
 Response: 28897
 Conc: 12.50 ng/ml

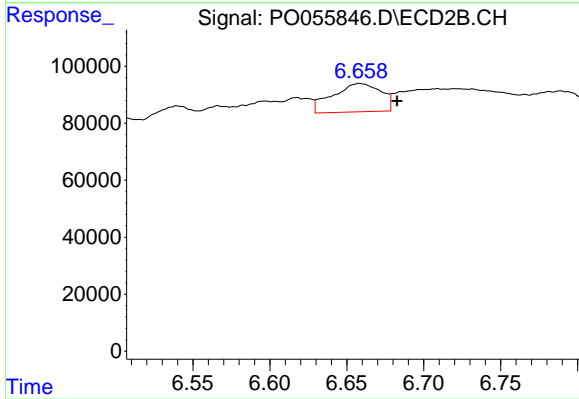
Instrument :
 ECD_O
 ClientSampled :
 OILY-DEBRIS



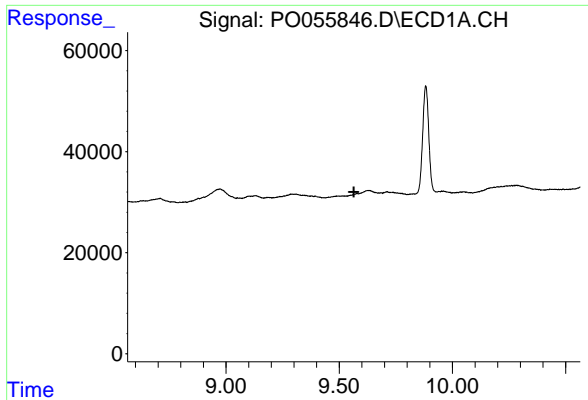
#34 AR-1260-4
 R.T.: 0.000 min
 Exp R.T. : 6.942 min
 Response: 0
 Conc: N.D.



#36 AR-1262-1
 R.T.: 7.654 min
 Delta R.T.: 0.009 min
 Response: 91454
 Conc: 28.53 ng/ml



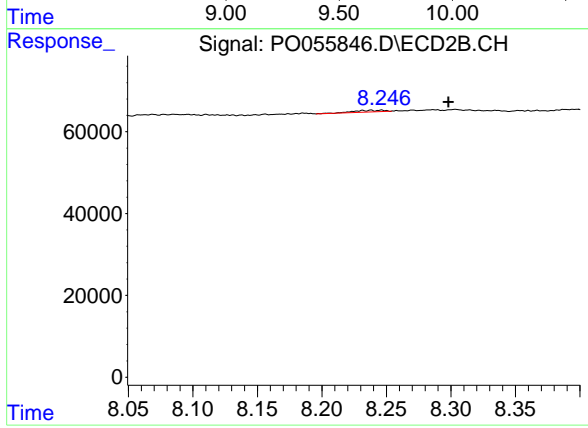
#36 AR-1262-1
 R.T.: 6.658 min
 Delta R.T.: -0.024 min
 Response: 217149
 Conc: 52.95 ng/ml



#45 AR-1268-5

R.T.: 0.000 min
Exp R.T.: 9.565 min
Response: 0
Conc: N.D.

Instrument :
ECD_O
ClientSampleId :
OILY-DEBRIS



#45 AR-1268-5

R.T.: 8.238 min
Delta R.T.: -0.060 min
Response: 6422
Conc: 0.53 ng/ml