

Data Path : Z:\pestpcbsrv\HPCHEM1\ECD_0\Data\P0050319\
 Data File : P0055849.D
 Signal(s) : Signal #1: ECD1A.CH Signal #2: ECD2B.CH
 Acq On : 03 May 2019 22:47
 Operator : SM/SJ
 Sample : K2650-01
 Misc :
 ALS Vial : 17 Sample Multiplier: 1

Instrument :
 ECD_0
 ClientSampleId :
 GROUND-WATERRE

Integration File signal 1: autoint1.e
 Integration File signal 2: autoint2.e
 Quant Time: May 04 00:37:04 2019
 Quant Method : Z:\pestpcbsrv\HPCHEM1\ECD_0\methods\P0050319.M
 Quant Title : GC EXTRACTABLES
 QLast Update : Fri May 03 15:20:04 2019
 Response via : Initial Calibration
 Integrator: ChemStation 6890 Scale Mode: Small noise peaks clipped

Volume Inj. : 2 µl
 Signal #1 Phase : ZB-MR1 Signal #2 Phase: ZB-MR2
 Signal #1 Info : 30Mx0.32mmx 0.50µ Signal #2 Info : 30M x 0.32mm x 0.25µm

Compound	RT#1	RT#2	Resp#1	Resp#2	ng/ml	ng/ml

System Monitoring Compounds						
1) SA Tetrachlo...	4.279	3.593	350958	378374	11.728	13.397
2) SA Decachlor...	9.877	8.542	42149	34921	1.126	1.291
Target Compounds						
3) L1 AR-1016-1	5.371	4.670	45681	28565	32.144	21.255 #
4) L1 AR-1016-2	0.000	4.670	0	28565	N.D.	15.644 #
5) L1 AR-1016-3	0.000	4.831	0	9209	N.D.	9.189 #
6) L1 AR-1016-4	5.623	4.911	35673	73869	34.130	90.789 #
7) L1 AR-1016-5	0.000	5.118	0	29379	N.D.	26.687 #
12) L3 AR-1232-2	0.000	4.670	0	28565	N.D.	32.592 #
13) L3 AR-1232-3	0.000	4.831	0	9209	N.D.	19.198 #
14) L3 AR-1232-4	5.623	4.967	35673	63628	70.148	149.797 #
15) L3 AR-1232-5	0.000	5.118	0	29379	N.D.	60.624 #
16) L4 AR-1242-1	5.371	4.670	45681	28565	37.728	25.490 #
17) L4 AR-1242-2	0.000	4.670	0	28565	N.D.	18.775 #
18) L4 AR-1242-3	0.000	4.831	0	9209	N.D.	10.634 #
19) L4 AR-1242-4	5.623	4.911	35673	73869	39.645	88.181 #
20) L4 AR-1242-5	0.000	5.457	0	20477	N.D.	17.059 #
21) L5 AR-1248-1	5.371	4.670	45681	28565	50.469	34.066 #
22) L5 AR-1248-2	0.000	4.911	0	73869	N.D.	67.230 #
23) L5 AR-1248-3	0.000	4.911	0	73869	N.D.	65.075 #
24) L5 AR-1248-4	0.000	5.118	0	29379	N.D.	20.922 #
25) L5 AR-1248-5	0.000	5.457	0	20477	N.D.	13.672 #
26) L6 AR-1254-1	0.000	5.457	0	20477	N.D.	7.651 #
28) L6 AR-1254-3	6.881	0.000	57249	0	15.747	N.D. #
29) L6 AR-1254-4	7.195	0.000	25785	0	9.477	N.D. #
30) L6 AR-1254-5	0.000	6.644	0	26324	N.D.	7.274 #
32) L7 AR-1260-2	0.000	6.310	0	26148	N.D.	8.563 #
36) L8 AR-1262-1	0.000	6.644	0	26324	N.D.	6.419 #

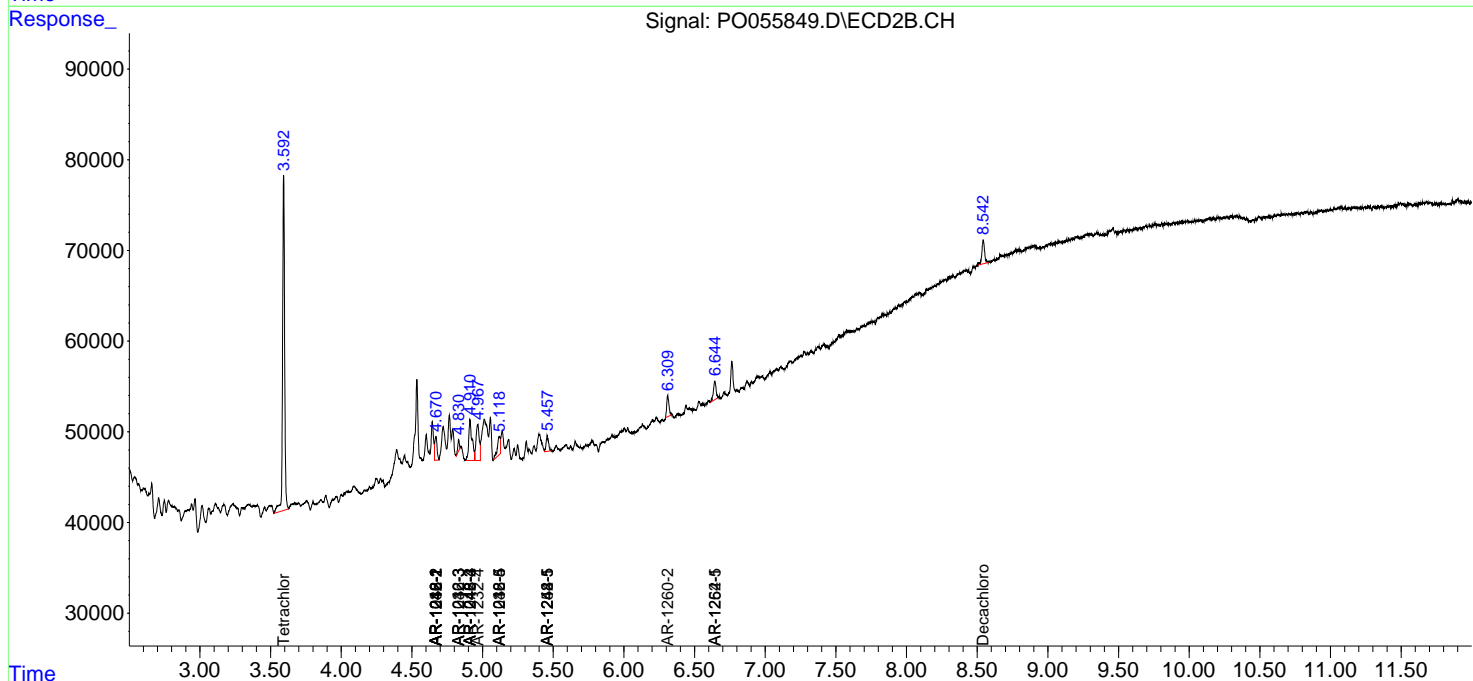
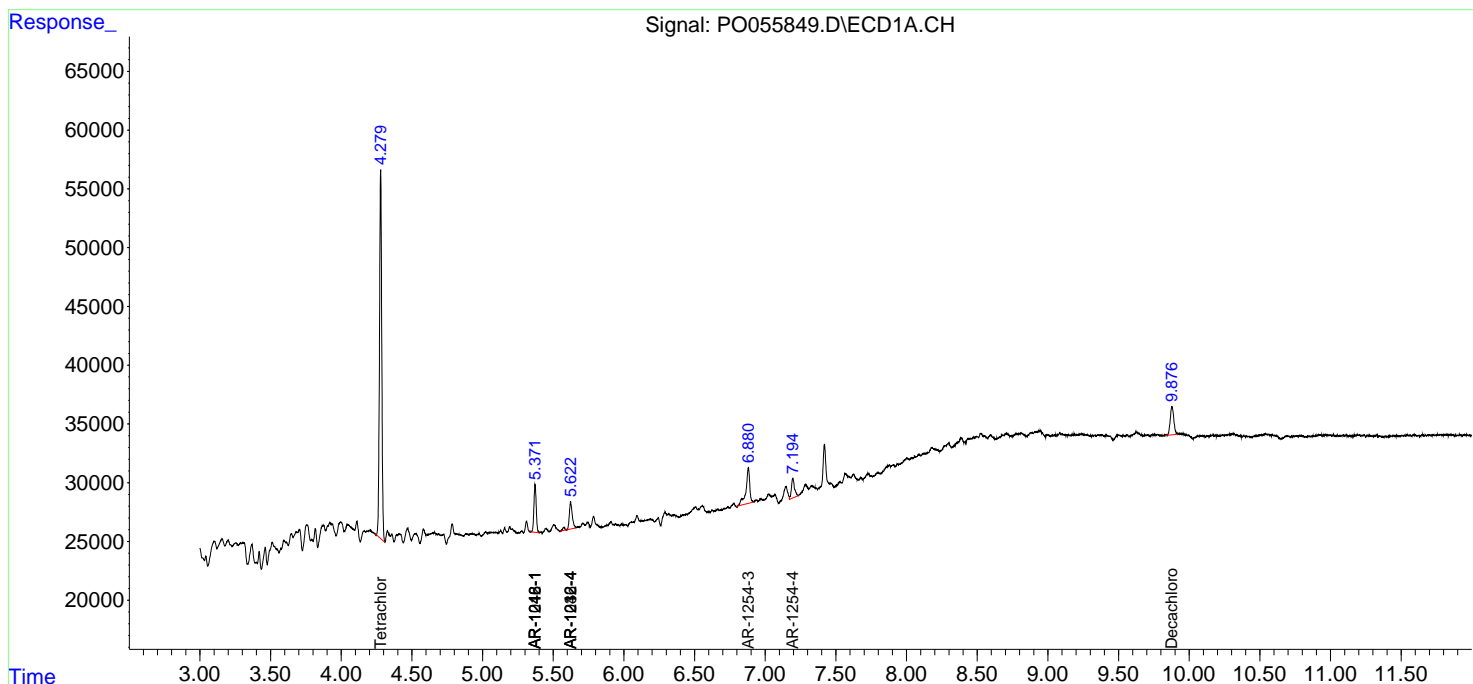
(f)=RT Delta > 1/2 Window (#)=Amounts differ by > 25% (m)=manual int.

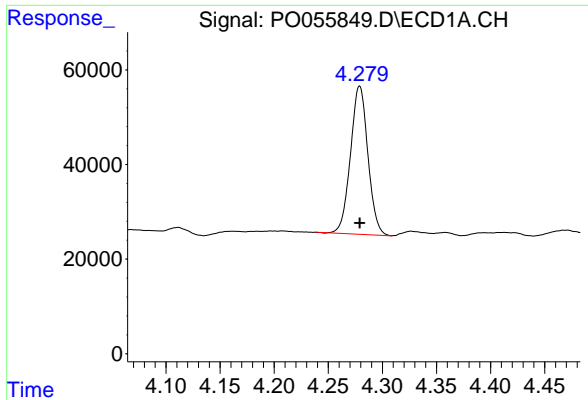
Data Path : Z:\pestpcbsrv\HPCHEM1\ECD_0\Data\P0050319\
 Data File : P0055849.D
 Signal(s) : Signal #1: ECD1A.CH Signal #2: ECD2B.CH
 Acq On : 03 May 2019 22:47
 Operator : SM/SJ
 Sample : K2650-01
 Misc :
 ALS Vial : 17 Sample Multiplier: 1

Instrument :
 ECD_O
 ClientSampleId :
 GROUND-WATERRE

Integration File signal 1: autoint1.e
 Integration File signal 2: autoint2.e
 Quant Time: May 04 00:37:04 2019
 Quant Method : Z:\pestpcbsrv\HPCHEM1\ECD_0\methods\P0050319.M
 Quant Title : GC EXTRACTABLES
 QLast Update : Fri May 03 15:20:04 2019
 Response via : Initial Calibration
 Integrator: ChemStation 6890 Scale Mode: Small noise peaks clipped

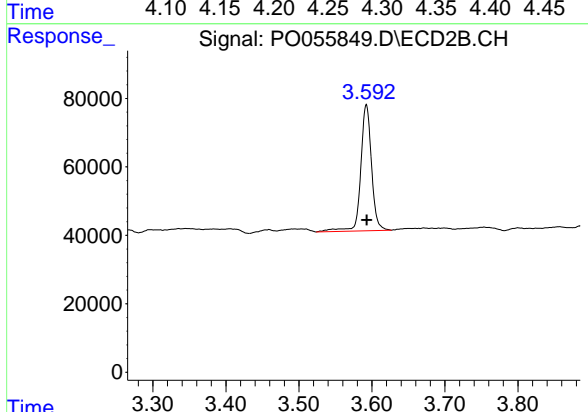
Volume Inj. : 2 µl
 Signal #1 Phase : ZB-MR1 Signal #2 Phase: ZB-MR2
 Signal #1 Info : 30Mx0.32mmx 0.50µ Signal #2 Info : 30M x 0.32mm x 0.25µm



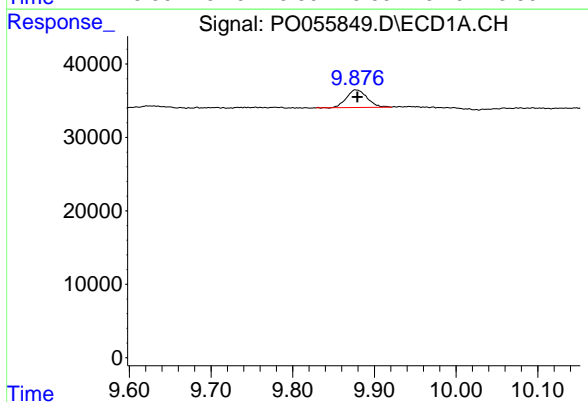


#1 Tetrachloro-m-xylene
 R.T.: 4.279 min
 Delta R.T.: 0.000 min
 Response: 350958
 Conc: 11.73 ng/ml

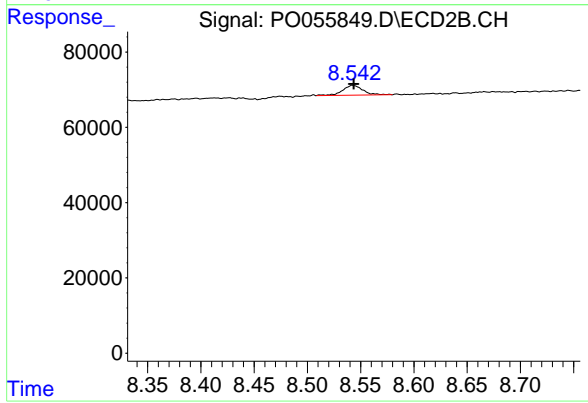
Instrument :
 ECD_O
 ClientSampleId :
 GROUND-WATERRE



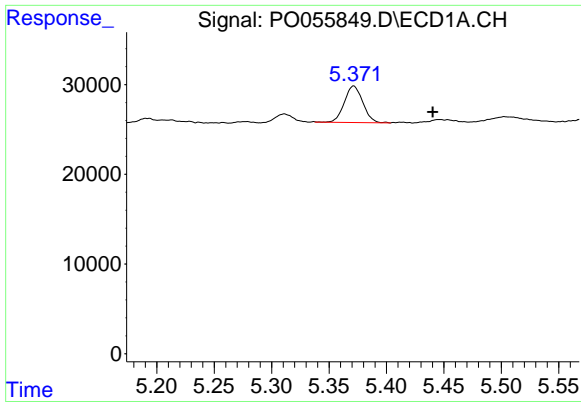
#1 Tetrachloro-m-xylene
 R.T.: 3.593 min
 Delta R.T.: 0.000 min
 Response: 378374
 Conc: 13.40 ng/ml



#2 Decachlorobiphenyl
 R.T.: 9.877 min
 Delta R.T.: -0.002 min
 Response: 42149
 Conc: 1.13 ng/ml



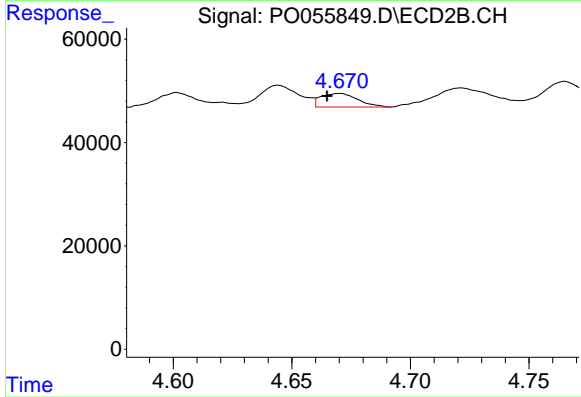
#2 Decachlorobiphenyl
 R.T.: 8.542 min
 Delta R.T.: -0.001 min
 Response: 34921
 Conc: 1.29 ng/ml



#3 AR-1016-1

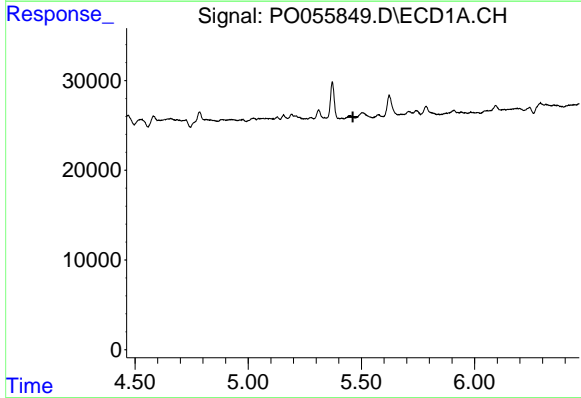
R.T.: 5.371 min
 Delta R.T.: -0.069 min
 Response: 45681
 Conc: 32.14 ng/ml

Instrument :
 ECD_O
 ClientSampleId :
 GROUND-WATERRE



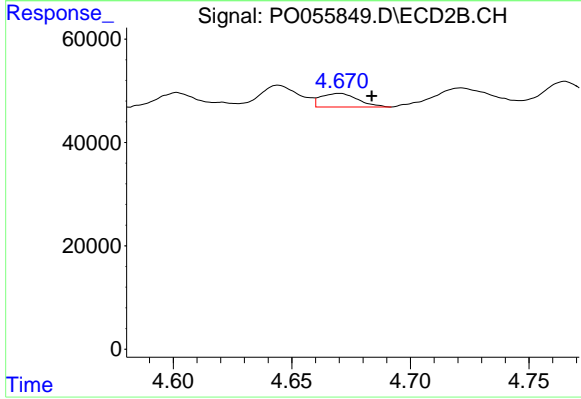
#3 AR-1016-1

R.T.: 4.670 min
 Delta R.T.: 0.006 min
 Response: 28565
 Conc: 21.26 ng/ml



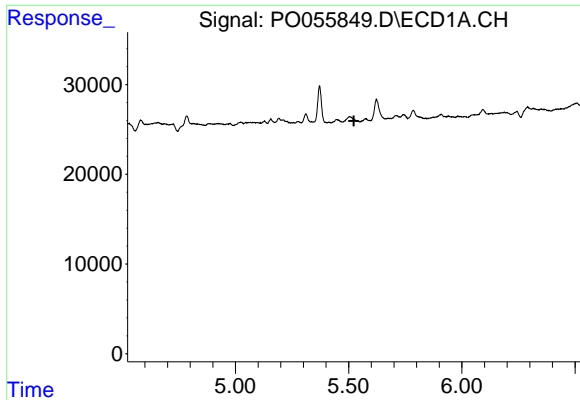
#4 AR-1016-2

R.T.: 0.000 min
 Exp R.T. : 5.463 min
 Response: 0
 Conc: N.D.



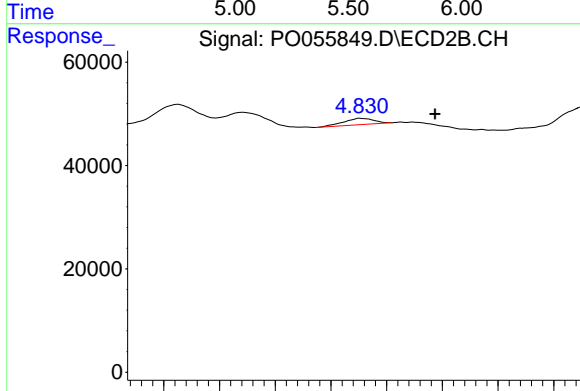
#4 AR-1016-2

R.T.: 4.670 min
 Delta R.T.: -0.013 min
 Response: 28565
 Conc: 15.64 ng/ml

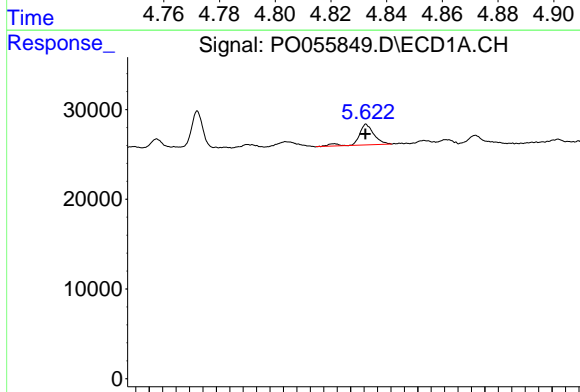


#5 AR-1016-3
 R.T.: 0.000 min
 Exp R.T.: 5.524 min
 Response: 0
 Conc: N.D.

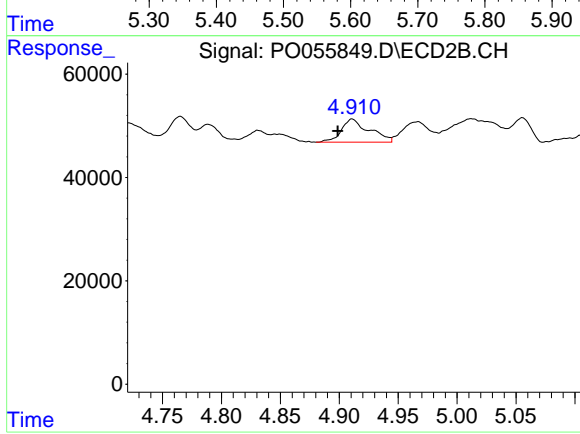
Instrument :
 ECD_O
ClientSampleId :
 GROUND-WATERRE



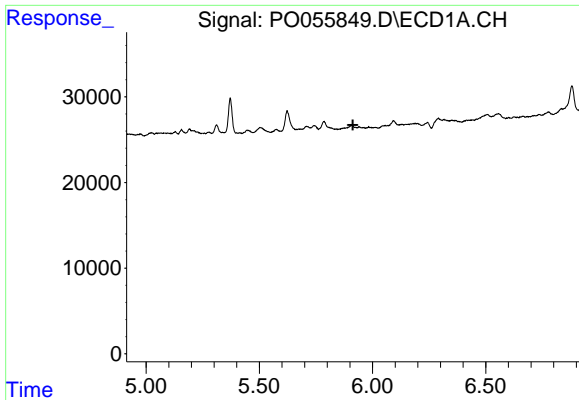
#5 AR-1016-3
 R.T.: 4.831 min
 Delta R.T.: -0.027 min
 Response: 9209
 Conc: 9.19 ng/ml



#6 AR-1016-4
 R.T.: 5.623 min
 Delta R.T.: 0.000 min
 Response: 35673
 Conc: 34.13 ng/ml



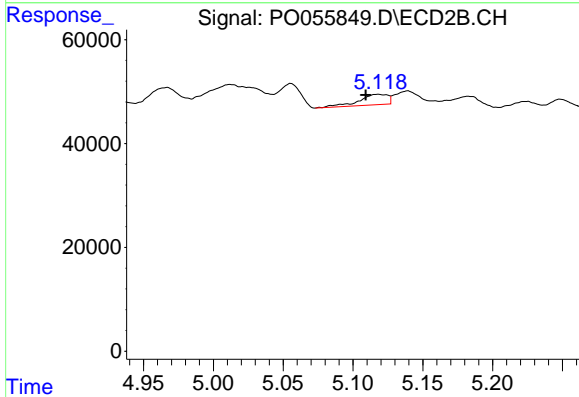
#6 AR-1016-4
 R.T.: 4.911 min
 Delta R.T.: 0.012 min
 Response: 73869
 Conc: 90.79 ng/ml



#7 AR-1016-5

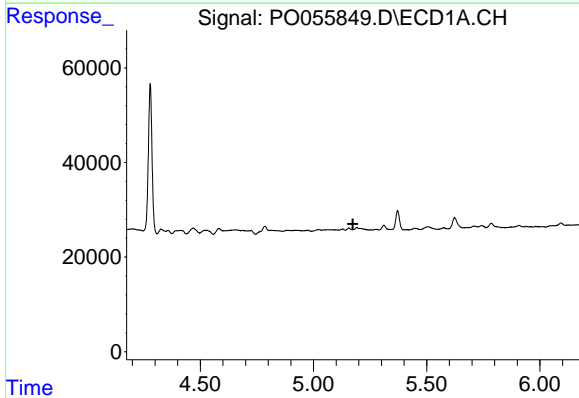
R.T.: 0.000 min
 Exp R.T. : 5.914 min
 Response: 0
 Conc: N.D.

Instrument :
 ECD_O
 ClientSampleId :
 GROUND-WATERRE



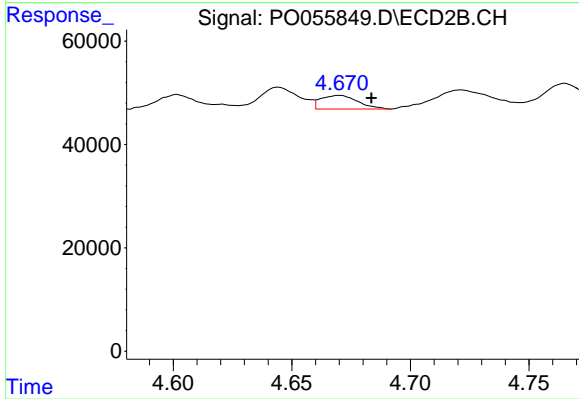
#7 AR-1016-5

R.T.: 5.118 min
 Delta R.T.: 0.009 min
 Response: 29379
 Conc: 26.69 ng/ml



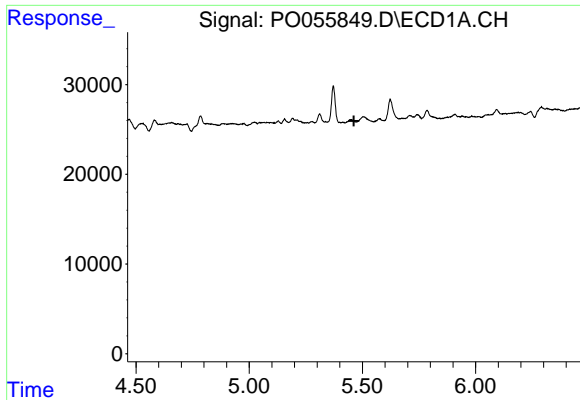
#12 AR-1232-2

R.T.: 0.000 min
 Exp R.T. : 5.174 min
 Response: 0
 Conc: N.D.



#12 AR-1232-2

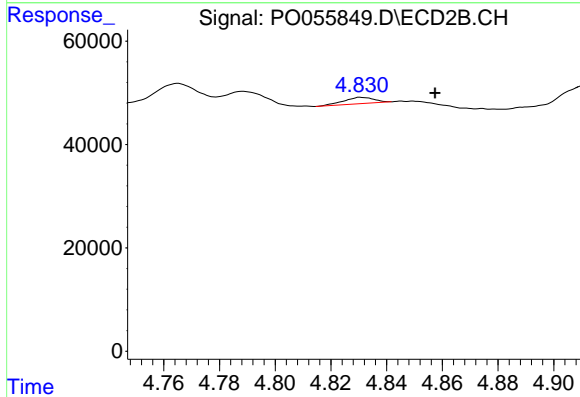
R.T.: 4.670 min
 Delta R.T.: -0.013 min
 Response: 28565
 Conc: 32.59 ng/ml



#13 AR-1232-3

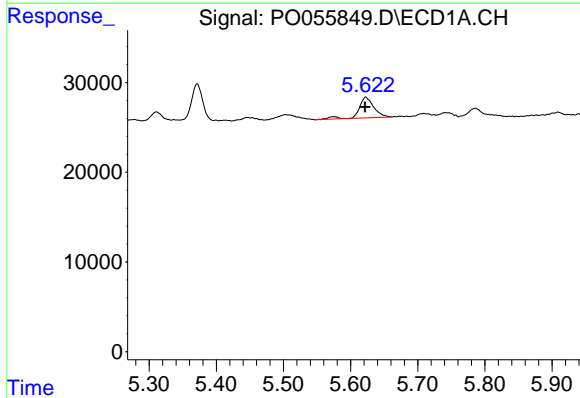
R.T.: 0.000 min
 Exp R.T.: 5.462 min
 Response: 0
 Conc: N.D.

Instrument :
 ECD_O
 ClientSampleId :
 GROUND-WATERRE



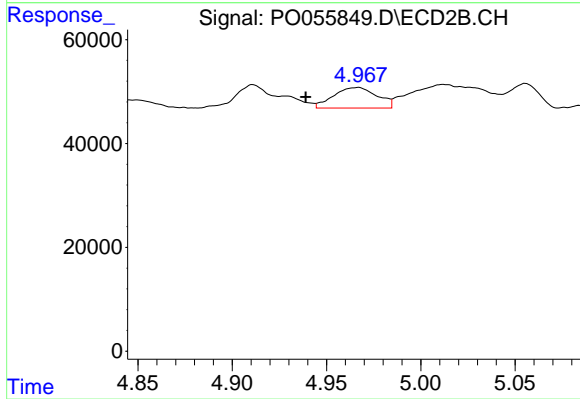
#13 AR-1232-3

R.T.: 4.831 min
 Delta R.T.: -0.027 min
 Response: 9209
 Conc: 19.20 ng/ml



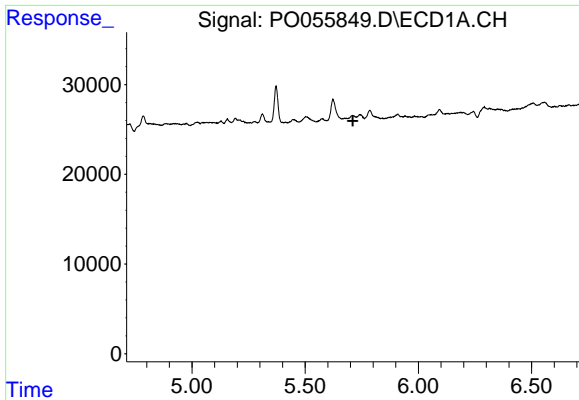
#14 AR-1232-4

R.T.: 5.623 min
 Delta R.T.: 0.001 min
 Response: 35673
 Conc: 70.15 ng/ml



#14 AR-1232-4

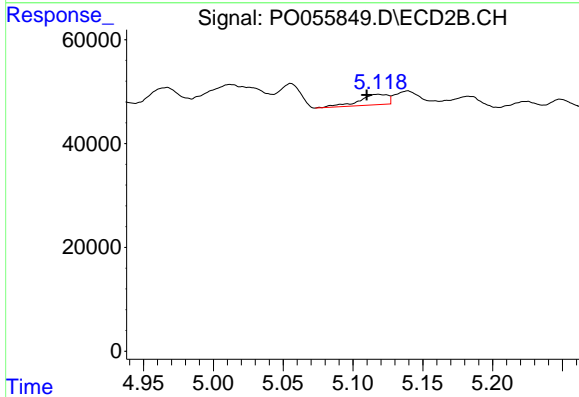
R.T.: 4.967 min
 Delta R.T.: 0.028 min
 Response: 63628
 Conc: 149.80 ng/ml



#15 AR-1232-5

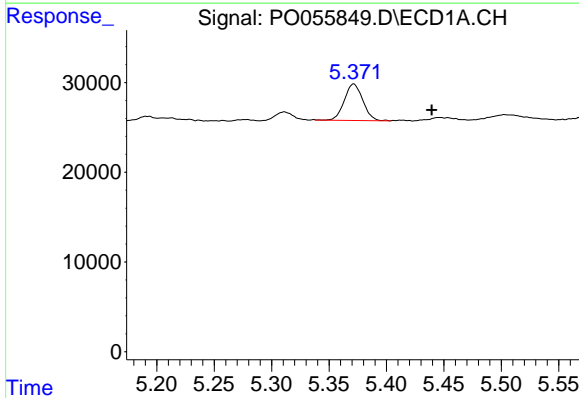
R.T.: 0.000 min
 Exp R.T.: 5.711 min
 Response: 0
 Conc: N.D.

Instrument :
 ECD_O
 ClientSampleId :
 GROUND-WATERRE



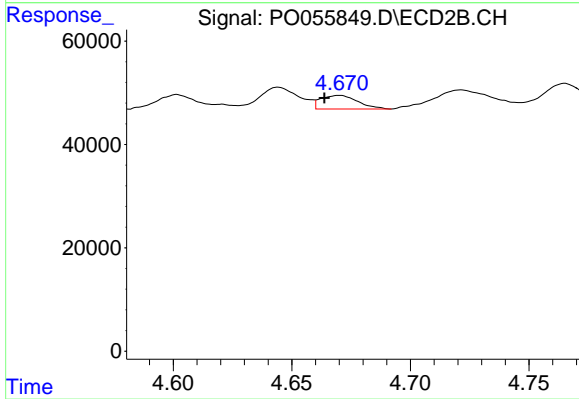
#15 AR-1232-5

R.T.: 5.118 min
 Delta R.T.: 0.009 min
 Response: 29379
 Conc: 60.62 ng/ml



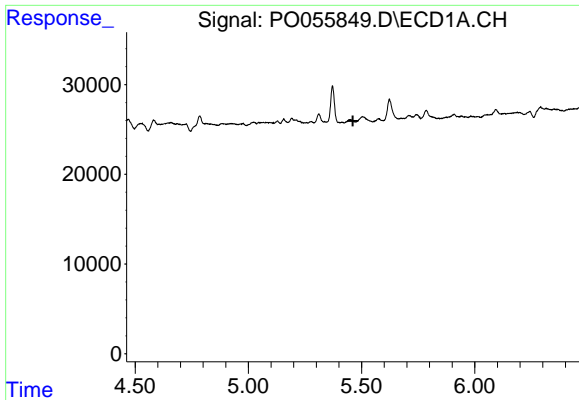
#16 AR-1242-1

R.T.: 5.371 min
 Delta R.T.: -0.068 min
 Response: 45681
 Conc: 37.73 ng/ml



#16 AR-1242-1

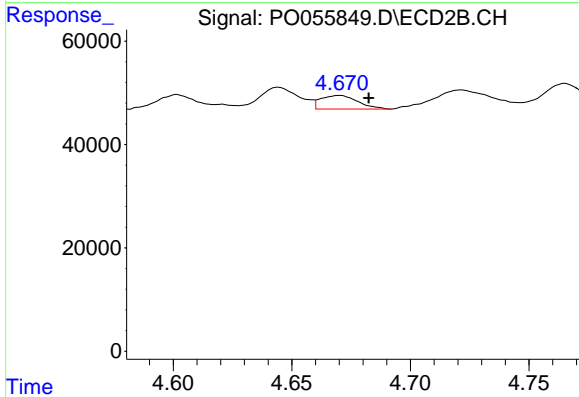
R.T.: 4.670 min
 Delta R.T.: 0.007 min
 Response: 28565
 Conc: 25.49 ng/ml



#17 AR-1242-2

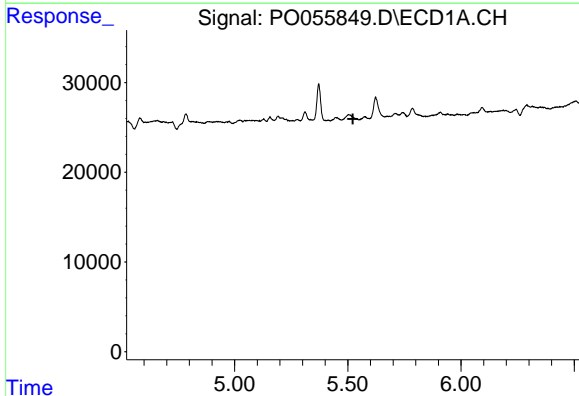
R.T.: 0.000 min
 Exp R.T. : 5.462 min
 Response: 0
 Conc: N.D.

Instrument :
 ECD_O
 ClientSampleId :
 GROUND-WATERRE



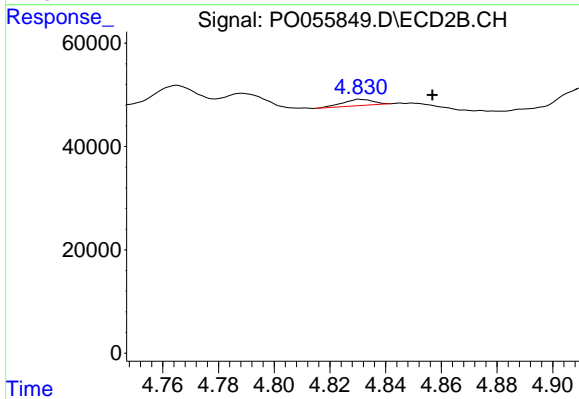
#17 AR-1242-2

R.T.: 4.670 min
 Delta R.T.: -0.012 min
 Response: 28565
 Conc: 18.77 ng/ml



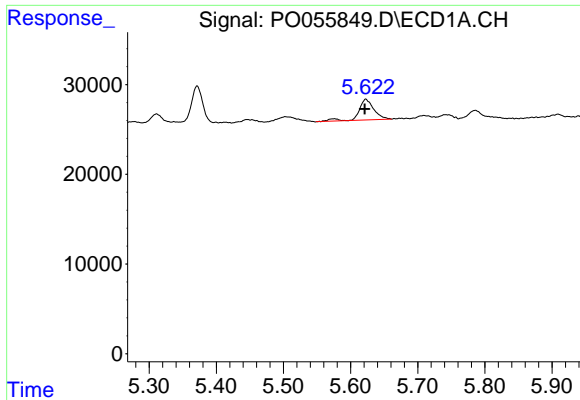
#18 AR-1242-3

R.T.: 0.000 min
 Exp R.T. : 5.522 min
 Response: 0
 Conc: N.D.



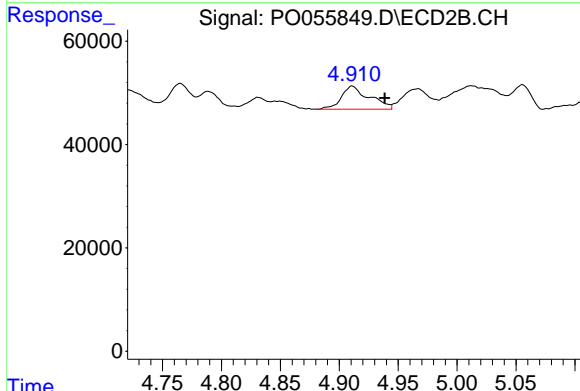
#18 AR-1242-3

R.T.: 4.831 min
 Delta R.T.: -0.026 min
 Response: 9209
 Conc: 10.63 ng/ml

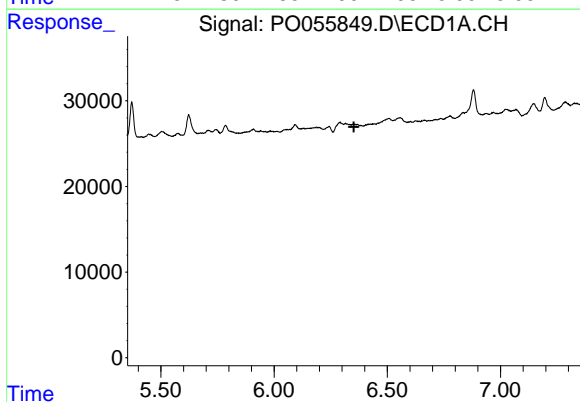


#19 AR-1242-4
 R.T.: 5.623 min
 Delta R.T.: 0.002 min
 Response: 35673
 Conc: 39.64 ng/ml

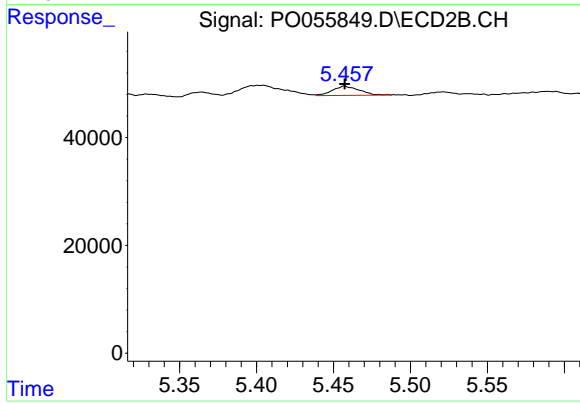
Instrument :
 ECD_O
 ClientSampleId :
 GROUND-WATERRE



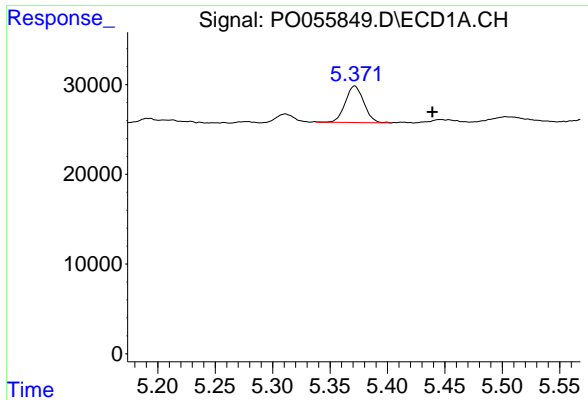
#19 AR-1242-4
 R.T.: 4.911 min
 Delta R.T.: -0.028 min
 Response: 73869
 Conc: 88.18 ng/ml



#20 AR-1242-5
 R.T.: 0.000 min
 Exp R.T. : 6.352 min
 Response: 0
 Conc: N.D.

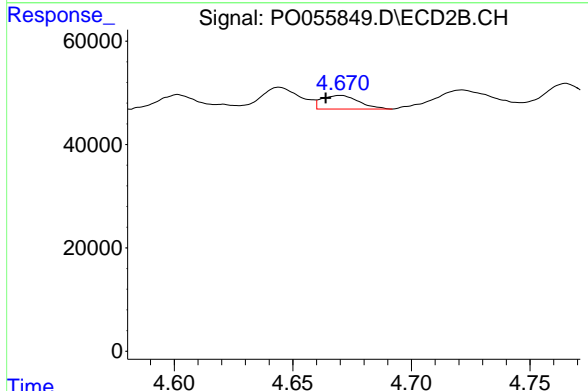


#20 AR-1242-5
 R.T.: 5.457 min
 Delta R.T.: 0.000 min
 Response: 20477
 Conc: 17.06 ng/ml

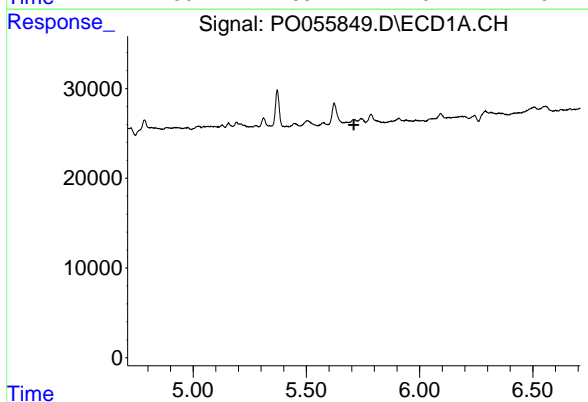


#21 AR-1248-1
 R.T.: 5.371 min
 Delta R.T.: -0.068 min
 Response: 45681
 Conc: 50.47 ng/ml

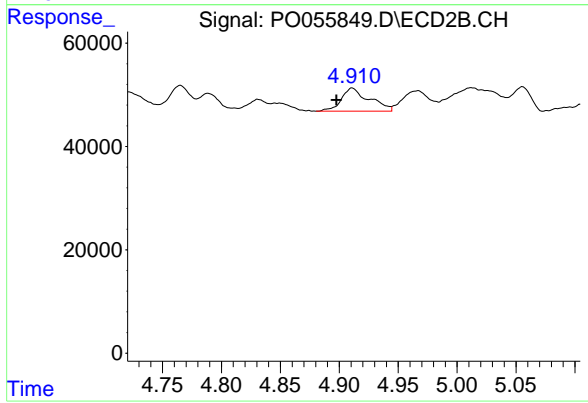
Instrument :
 ECD_O
ClientSampleId :
 GROUND-WATERRE



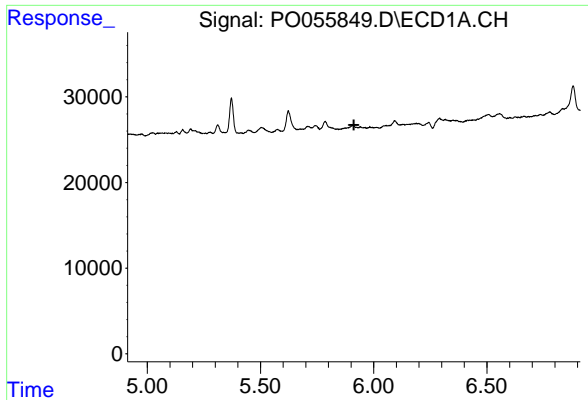
#21 AR-1248-1
 R.T.: 4.670 min
 Delta R.T.: 0.006 min
 Response: 28565
 Conc: 34.07 ng/ml



#22 AR-1248-2
 R.T.: 0.000 min
 Exp R.T. : 5.710 min
 Response: 0
 Conc: N.D.



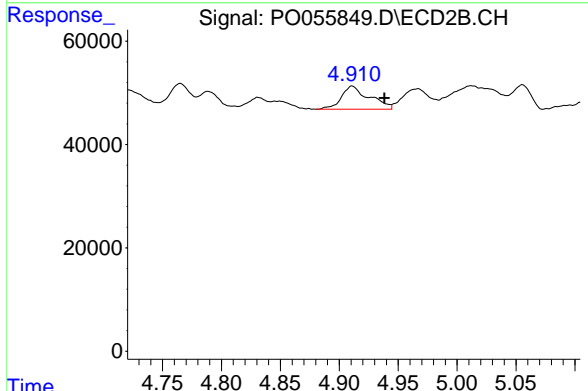
#22 AR-1248-2
 R.T.: 4.911 min
 Delta R.T.: 0.013 min
 Response: 73869
 Conc: 67.23 ng/ml



#23 AR-1248-3

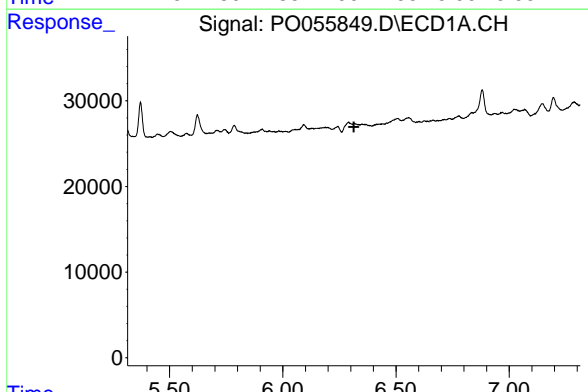
R.T.: 0.000 min
 Exp R.T.: 5.912 min
 Response: 0
 Conc: N.D.

Instrument :
 ECD_O
ClientSampled :
 GROUND-WATERRE



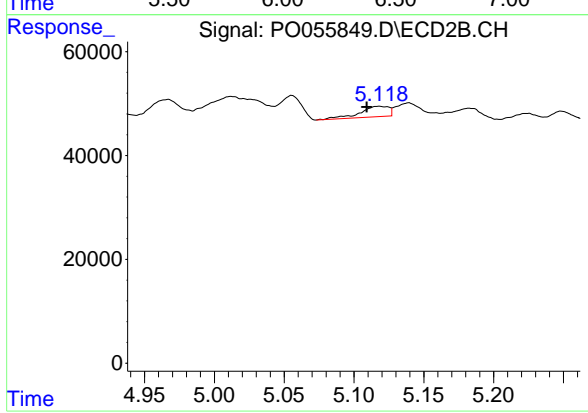
#23 AR-1248-3

R.T.: 4.911 min
 Delta R.T.: -0.027 min
 Response: 73869
 Conc: 65.07 ng/ml



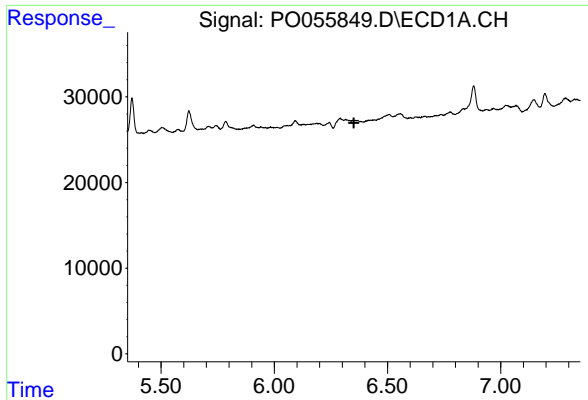
#24 AR-1248-4

R.T.: 0.000 min
 Exp R.T.: 6.314 min
 Response: 0
 Conc: N.D.



#24 AR-1248-4

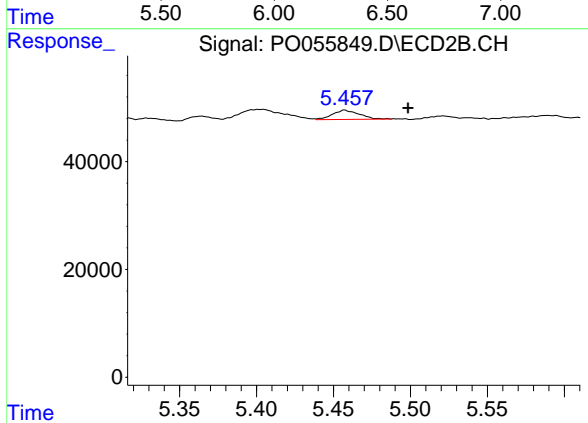
R.T.: 5.118 min
 Delta R.T.: 0.009 min
 Response: 29379
 Conc: 20.92 ng/ml



#25 AR-1248-5

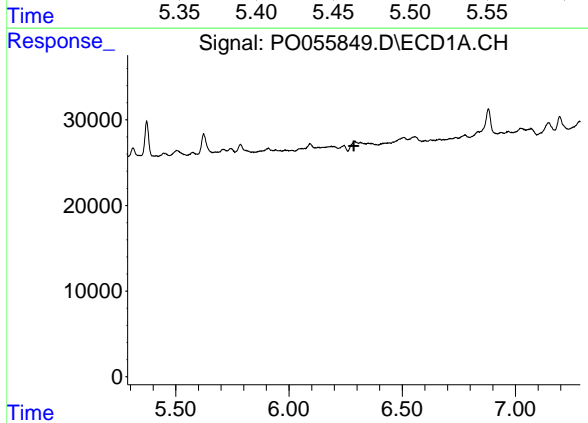
R.T.: 0.000 min
 Exp R.T. : 6.352 min
 Response: 0
 Conc: N.D.

Instrument :
 ECD_O
ClientSampleId :
 GROUND-WATERRE



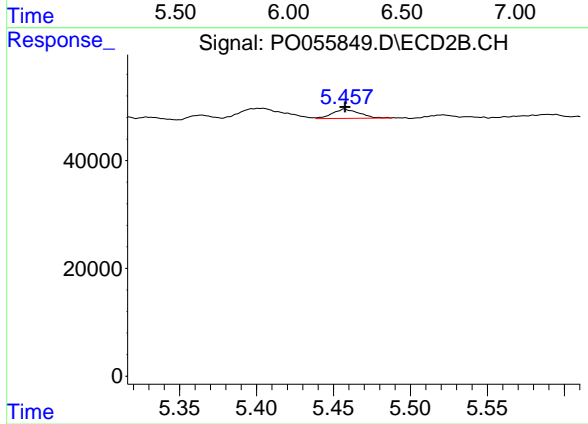
#25 AR-1248-5

R.T.: 5.457 min
 Delta R.T.: -0.041 min
 Response: 20477
 Conc: 13.67 ng/ml



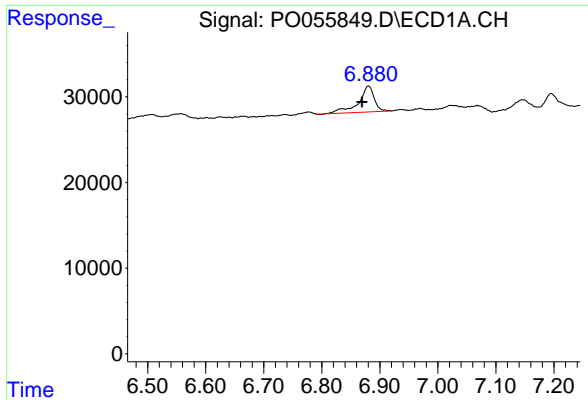
#26 AR-1254-1

R.T.: 0.000 min
 Exp R.T. : 6.287 min
 Response: 0
 Conc: N.D.



#26 AR-1254-1

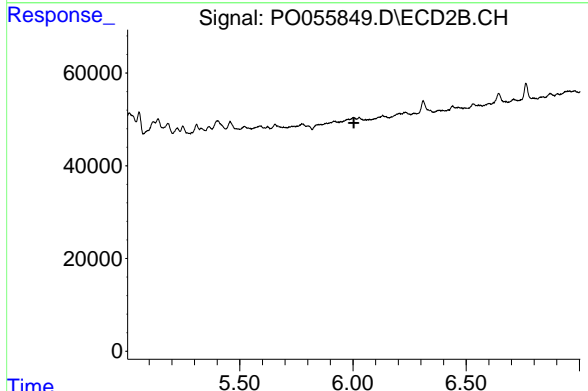
R.T.: 5.457 min
 Delta R.T.: 0.000 min
 Response: 20477
 Conc: 7.65 ng/ml



#28 AR-1254-3

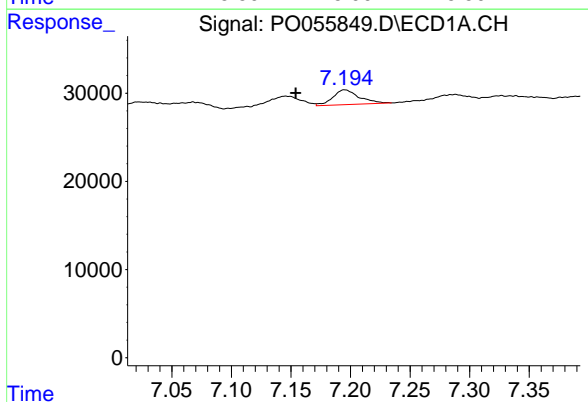
R.T.: 6.881 min
 Delta R.T.: 0.011 min
 Response: 57249
 Conc: 15.75 ng/ml

Instrument :
 ECD_O
 ClientSampleId :
 GROUND-WATERRE



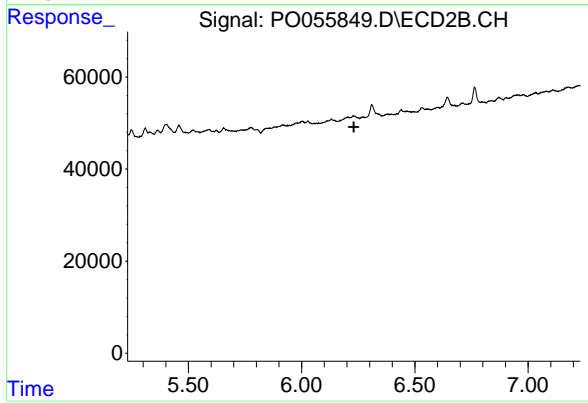
#28 AR-1254-3

R.T.: 0.000 min
 Exp R.T. : 6.004 min
 Response: 0
 Conc: N.D.



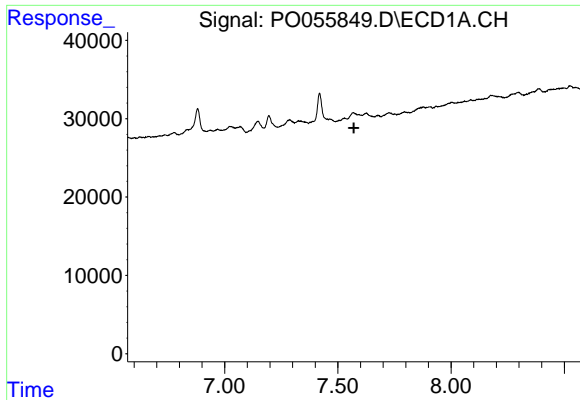
#29 AR-1254-4

R.T.: 7.195 min
 Delta R.T.: 0.041 min
 Response: 25785
 Conc: 9.48 ng/ml



#29 AR-1254-4

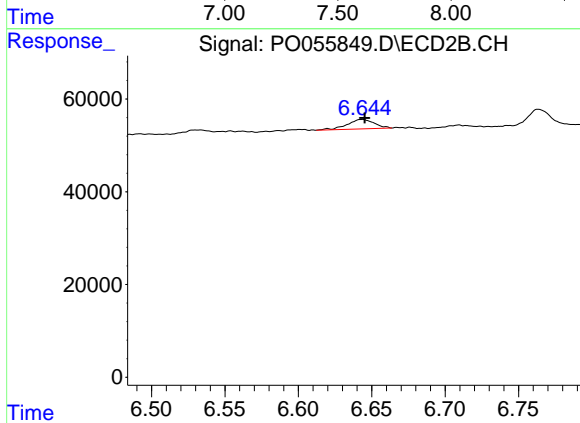
R.T.: 0.000 min
 Exp R.T. : 6.231 min
 Response: 0
 Conc: N.D.



#30 AR-1254-5

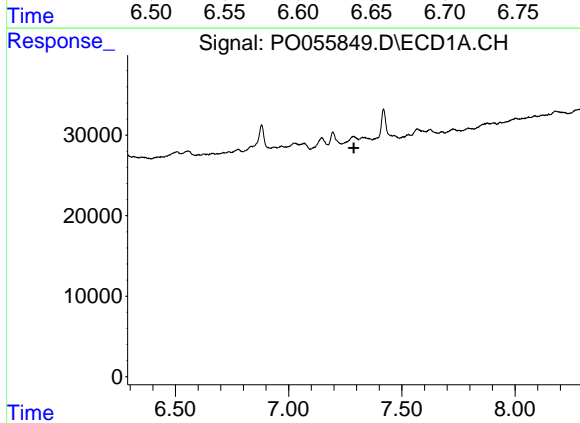
R.T.: 0.000 min
 Exp R.T.: 7.571 min
 Response: 0
 Conc: N.D.

Instrument :
 ECD_O
 ClientSampleId :
 GROUND-WATERRE



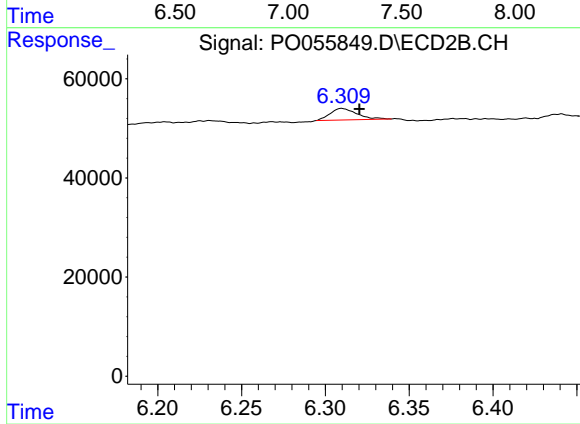
#30 AR-1254-5

R.T.: 6.644 min
 Delta R.T.: -0.002 min
 Response: 26324
 Conc: 7.27 ng/ml



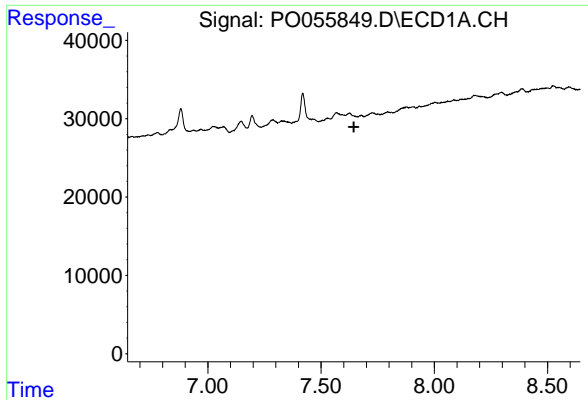
#32 AR-1260-2

R.T.: 0.000 min
 Exp R.T.: 7.288 min
 Response: 0
 Conc: N.D.



#32 AR-1260-2

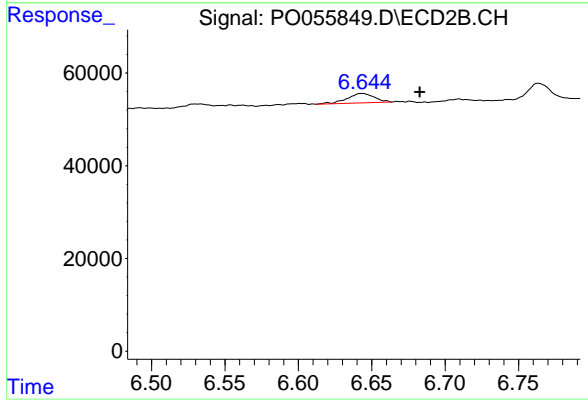
R.T.: 6.310 min
 Delta R.T.: -0.011 min
 Response: 26148
 Conc: 8.56 ng/ml



#36 AR-1262-1

R.T.: 0.000 min
 Exp R.T.: 7.645 min
 Response: 0
 Conc: N.D.

Instrument :
 ECD_O
ClientSampled :
 GROUND-WATERRE



#36 AR-1262-1

R.T.: 6.644 min
 Delta R.T.: -0.039 min
 Response: 26324
 Conc: 6.42 ng/ml