

Data Path : Z:\pestpcbsrv\HPCHEM1\ECD\_0\Data\P0050319\  
 Data File : P0055859.D  
 Signal(s) : Signal #1: ECD1A.CH Signal #2: ECD2B.CH  
 Acq On : 04 May 2019 1:36  
 Operator : SM/SJ  
 Sample : K2647-01  
 Misc :  
 ALS Vial : 25 Sample Multiplier: 1

Instrument :  
 ECD\_0  
 ClientSampled :

Integration File signal 1: autoint1.e  
 Integration File signal 2: autoint2.e  
 Quant Time: May 04 06:52:37 2019  
 Quant Method : Z:\pestpcbsrv\HPCHEM1\ECD\_0\methods\P0050319.M  
 Quant Title : GC EXTRACTABLES  
 QLast Update : Fri May 03 15:20:04 2019  
 Response via : Initial Calibration  
 Integrator: ChemStation 6890 Scale Mode: Small noise peaks clipped

Volume Inj. : 2 µl  
 Signal #1 Phase : ZB-MR1 Signal #2 Phase: ZB-MR2  
 Signal #1 Info : 30Mx0.32mmx 0.50µ Signal #2 Info : 30M x 0.32mm x 0.25µm

Compound	RT#1	RT#2	Resp#1	Resp#2	ng/ml	ng/ml
System Monitoring Compounds						
1) SA Tetrachlo...	4.278	3.593	859894	885756	28.734	31.362
2) SA Decachlor...	9.879	8.545	658717	431693	17.605	15.963
Target Compounds						
3) L1 AR-1016-1	5.372	4.697	144806	27515	101.896	20.474 #
4) L1 AR-1016-2	0.000	4.697	0	27515	N.D.	15.069 #
5) L1 AR-1016-3	0.000	4.902	0	27891	N.D.	27.832 #
6) L1 AR-1016-4	5.594	4.902	20841	27891	19.939	34.279 #
7) L1 AR-1016-5	5.895	5.125	76096	67751	67.550	61.543
9) L2 AR-1221-2	0.000	3.890	0	25002	N.D.	90.147 #
10) L2 AR-1221-3	0.000	4.011	0	89823	N.D.	101.095 #
11) L3 AR-1232-1	0.000	4.011	0	89823	N.D.	121.370 #
12) L3 AR-1232-2	0.000	4.697	0	27515	N.D.	31.394 #
13) L3 AR-1232-3	0.000	4.902	0	27891	N.D.	58.146 #
14) L3 AR-1232-4	5.594	4.902	20841	27891	40.981	65.662 #
15) L3 AR-1232-5	0.000	5.125	0	67751	N.D.	139.805 #
16) L4 AR-1242-1	5.372	4.697	144806	27515	119.596	24.553 #
17) L4 AR-1242-2	0.000	4.697	0	27515	N.D.	18.085 #
18) L4 AR-1242-3	0.000	4.902	0	27891	N.D.	32.206 #
19) L4 AR-1242-4	5.594	4.902	20841	27891	23.161	33.294 #
20) L4 AR-1242-5	6.321	5.458	113913	72539	104.128	60.429 #
21) L5 AR-1248-1	5.372	4.697	144806	27515	159.986	32.813 #
22) L5 AR-1248-2	0.000	4.902	0	27891	N.D.	25.384 #
23) L5 AR-1248-3	5.895	4.902	76096	27891	51.530	24.570 #
24) L5 AR-1248-4	6.321	5.125	113913	67751	65.327	48.249 #
25) L5 AR-1248-5	6.321	5.458	113913	72539	68.198	48.433 #
26) L6 AR-1254-1	6.294	5.458	38093	72539	18.141	27.104 #
27) L6 AR-1254-2	6.506	5.602	267048	21368	80.465	8.748 #
28) L6 AR-1254-3	6.882	6.023	232559	223284	63.968	56.277
29) L6 AR-1254-4	7.153	6.233	58440	20527	21.480	7.656 #
30) L6 AR-1254-5	7.595	6.646	112232	112894	39.158	31.197
32) L7 AR-1260-2	7.284	6.319	456900	20236	174.464	6.627 #
33) L7 AR-1260-3	7.595	0.000	112232	0	56.116	N.D. #
36) L8 AR-1262-1	7.595	6.646	112232	112894	35.009	27.530
43) L9 AR-1268-3	0.000	7.743	0	582	N.D.	0.123 #

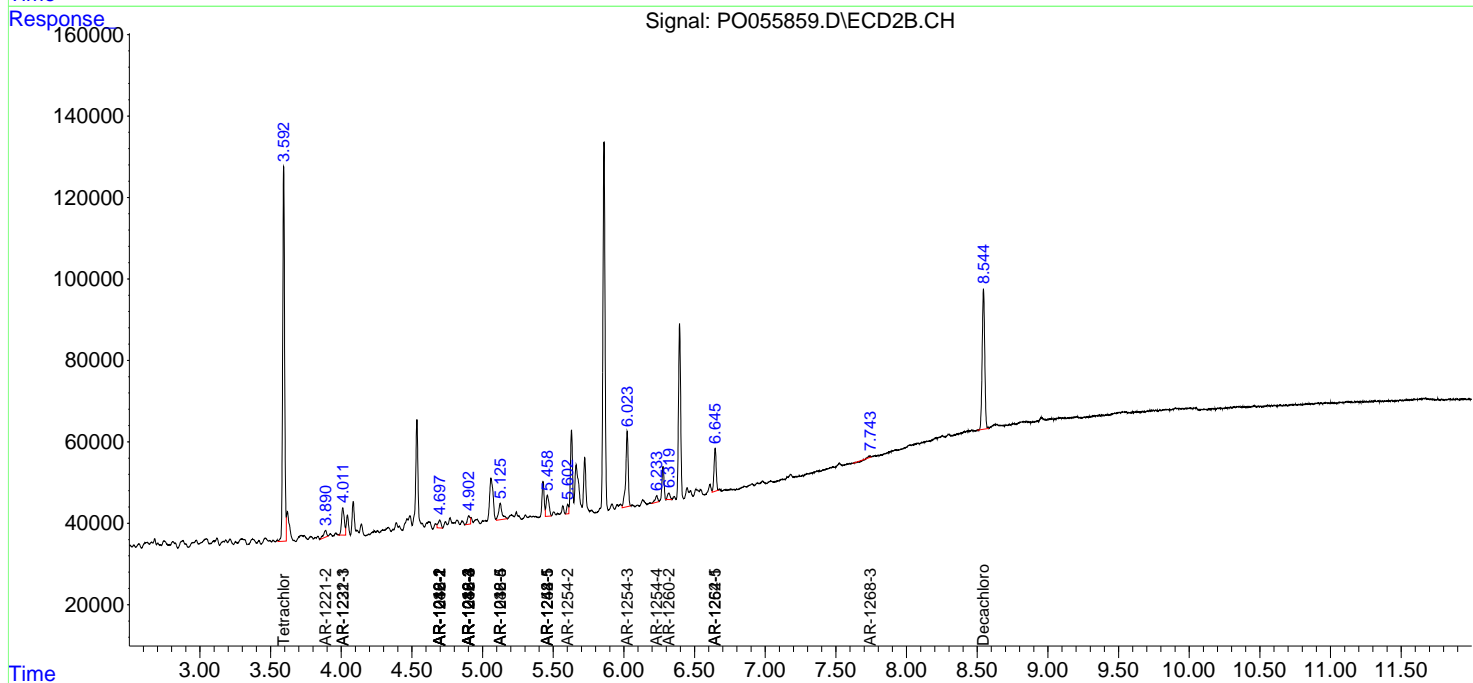
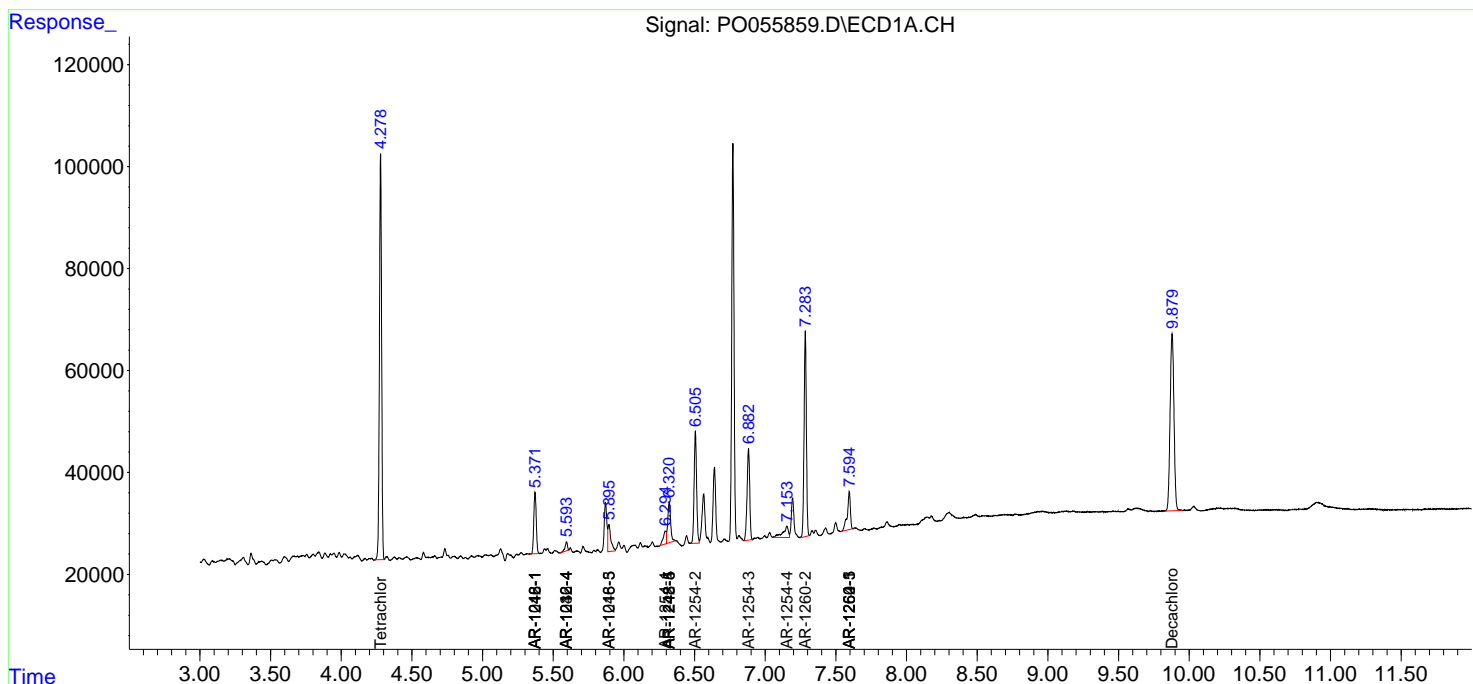
(f)=RT Delta > 1/2 Window (#)=Amounts differ by > 25% (m)=manual int.

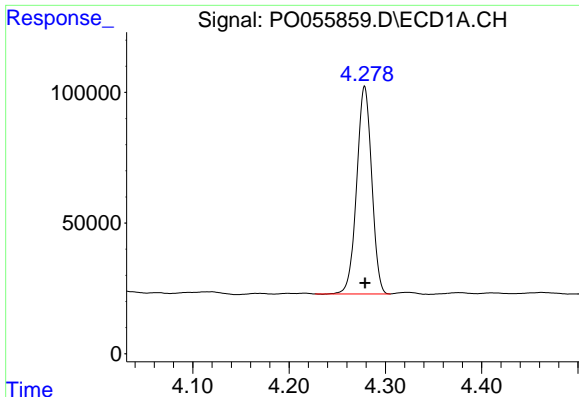
Data Path : Z:\pestpcbsrv\HPCHEM1\ECD\_0\Data\P0050319\  
 Data File : P0055859.D  
 Signal(s) : Signal #1: ECD1A.CH Signal #2: ECD2B.CH  
 Acq On : 04 May 2019 1:36  
 Operator : SM/SJ  
 Sample : K2647-01  
 Misc :  
 ALS Vial : 25 Sample Multiplier: 1

Instrument :  
 ECD\_O  
 ClientSampled :

Integration File signal 1: autoint1.e  
 Integration File signal 2: autoint2.e  
 Quant Time: May 04 06:52:37 2019  
 Quant Method : Z:\pestpcbsrv\HPCHEM1\ECD\_0\methods\P0050319.M  
 Quant Title : GC EXTRACTABLES  
 QLast Update : Fri May 03 15:20:04 2019  
 Response via : Initial Calibration  
 Integrator: ChemStation 6890 Scale Mode: Small noise peaks clipped

Volume Inj. : 2 µl  
 Signal #1 Phase : ZB-MR1 Signal #2 Phase: ZB-MR2  
 Signal #1 Info : 30Mx0.32mmx 0.50µ Signal #2 Info : 30M x 0.32mm x 0.25µm

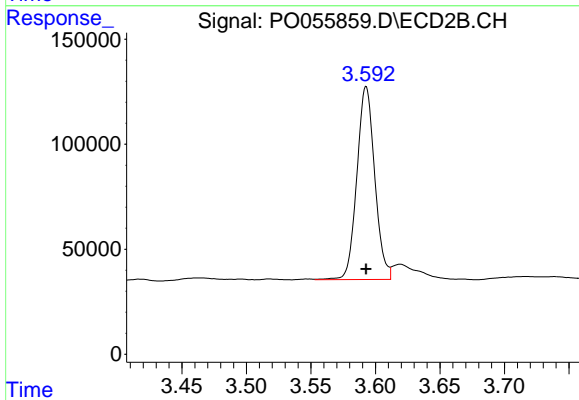




#1 Tetrachloro-m-xylene

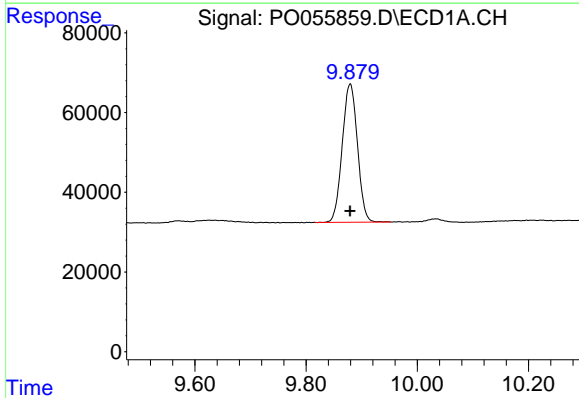
R.T.: 4.278 min  
Delta R.T.: 0.000 min  
Response: 859894  
Conc: 28.73 ng/ml

Instrument :  
ECD\_O  
ClientSampleId :



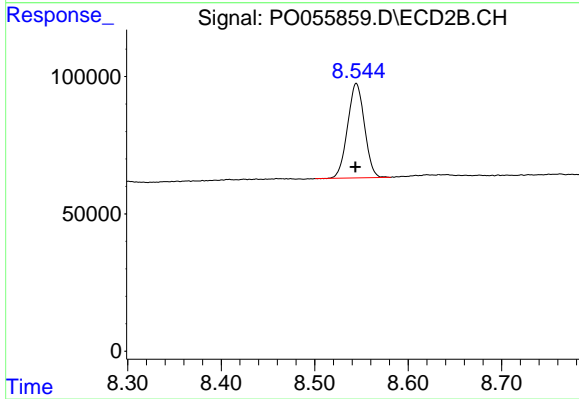
#1 Tetrachloro-m-xylene

R.T.: 3.593 min  
Delta R.T.: 0.000 min  
Response: 885756  
Conc: 31.36 ng/ml



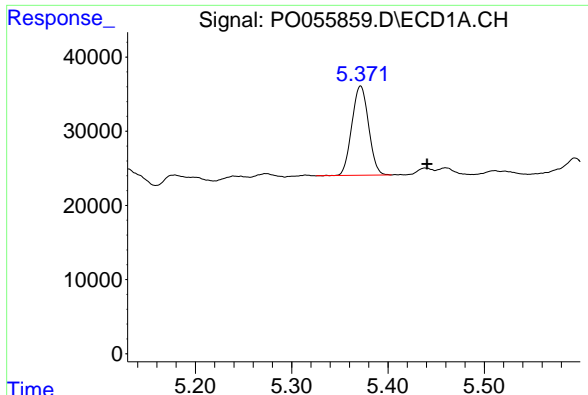
#2 Decachlorobiphenyl

R.T.: 9.879 min  
Delta R.T.: 0.000 min  
Response: 658717  
Conc: 17.60 ng/ml



#2 Decachlorobiphenyl

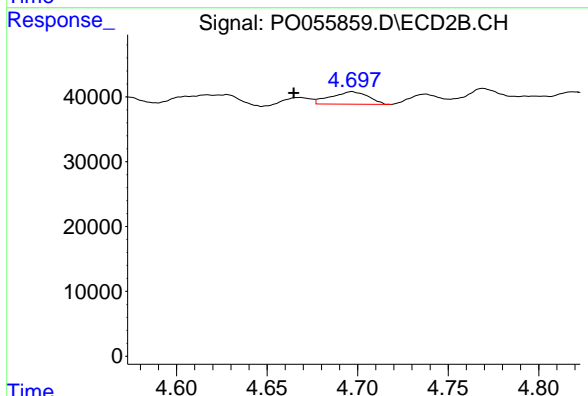
R.T.: 8.545 min  
Delta R.T.: 0.000 min  
Response: 431693  
Conc: 15.96 ng/ml



#3 AR-1016-1

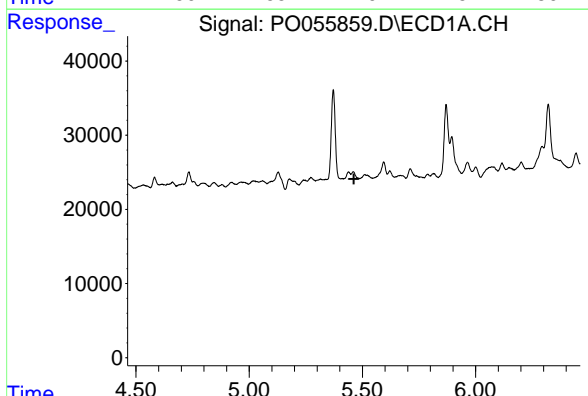
R.T.: 5.372 min  
 Delta R.T.: -0.069 min  
 Response: 144806  
 Conc: 101.90 ng/ml

Instrument :  
 ECD\_O  
 ClientSampleId :



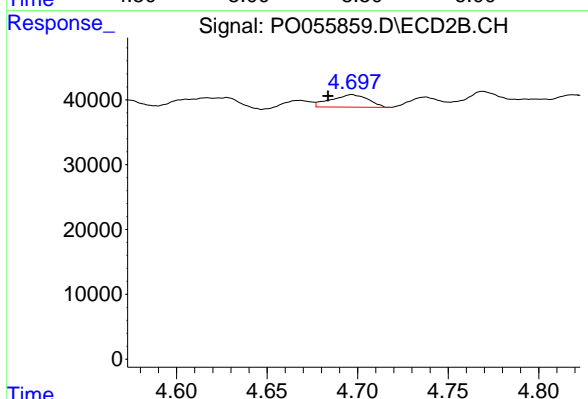
#3 AR-1016-1

R.T.: 4.697 min  
 Delta R.T.: 0.032 min  
 Response: 27515  
 Conc: 20.47 ng/ml



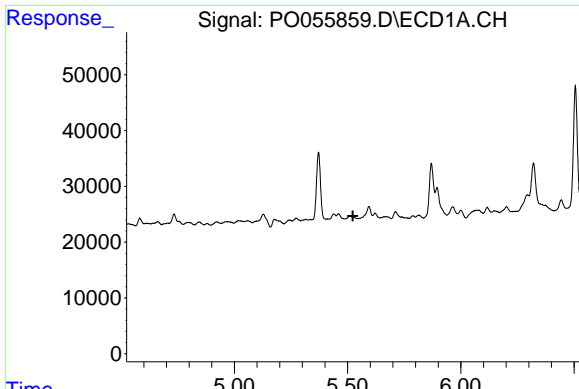
#4 AR-1016-2

R.T.: 0.000 min  
 Exp R.T. : 5.463 min  
 Response: 0  
 Conc: N.D.



#4 AR-1016-2

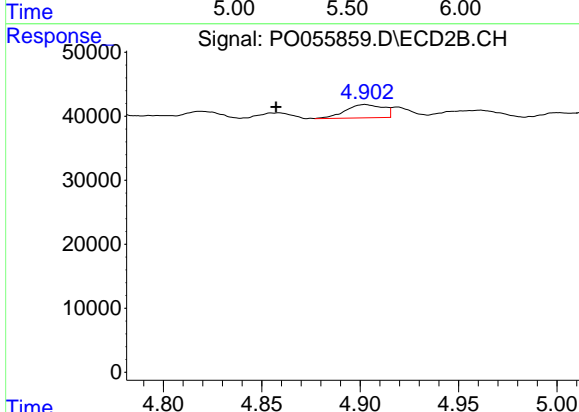
R.T.: 4.697 min  
 Delta R.T.: 0.013 min  
 Response: 27515  
 Conc: 15.07 ng/ml



#5 AR-1016-3

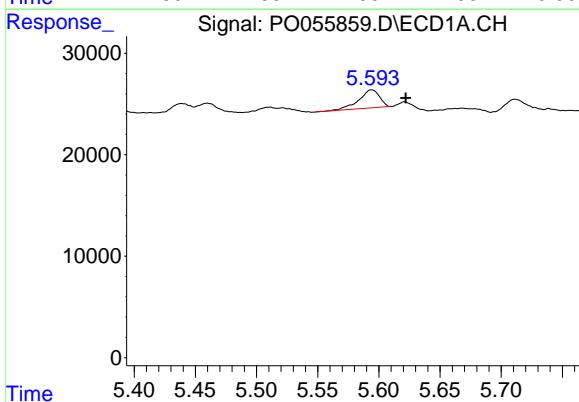
R.T.: 0.000 min  
 Exp R.T.: 5.524 min  
 Response: 0  
 Conc: N.D.

Instrument :  
 ECD\_O  
 ClientSampled :



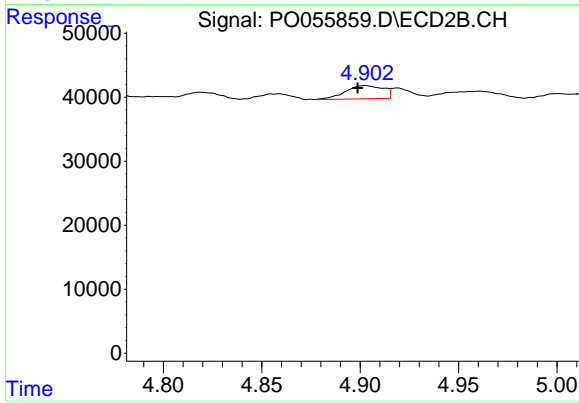
#5 AR-1016-3

R.T.: 4.902 min  
 Delta R.T.: 0.045 min  
 Response: 27891  
 Conc: 27.83 ng/ml



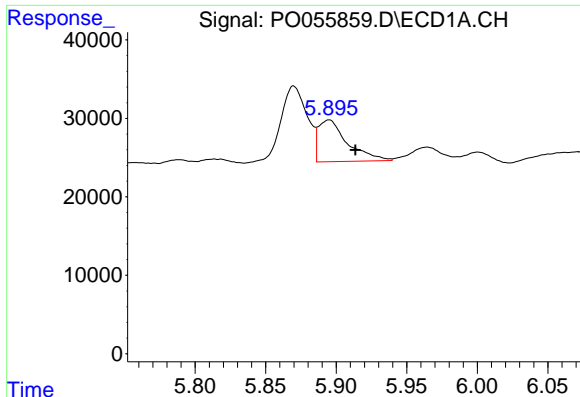
#6 AR-1016-4

R.T.: 5.594 min  
 Delta R.T.: -0.028 min  
 Response: 20841  
 Conc: 19.94 ng/ml



#6 AR-1016-4

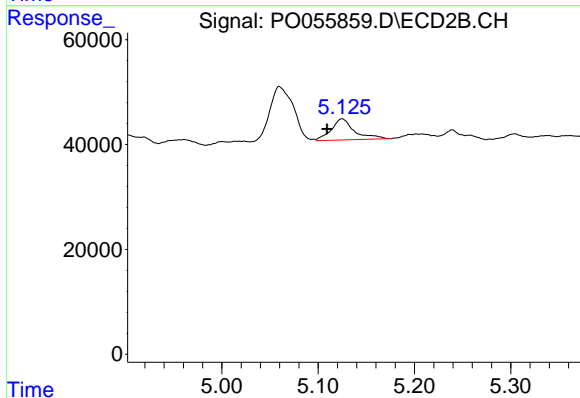
R.T.: 4.902 min  
 Delta R.T.: 0.004 min  
 Response: 27891  
 Conc: 34.28 ng/ml



#7 AR-1016-5

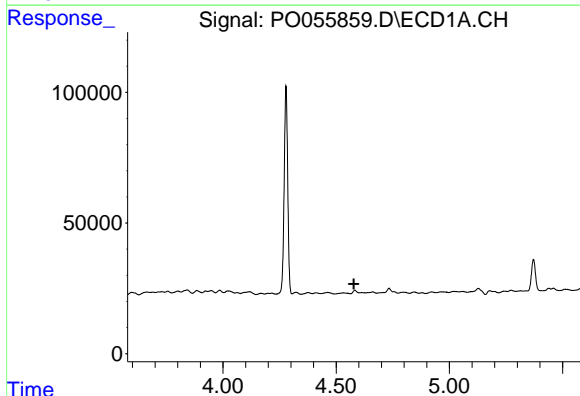
R.T.: 5.895 min  
 Delta R.T.: -0.018 min  
 Response: 76096  
 Conc: 67.55 ng/ml

Instrument :  
 ECD\_O  
 ClientSampled :



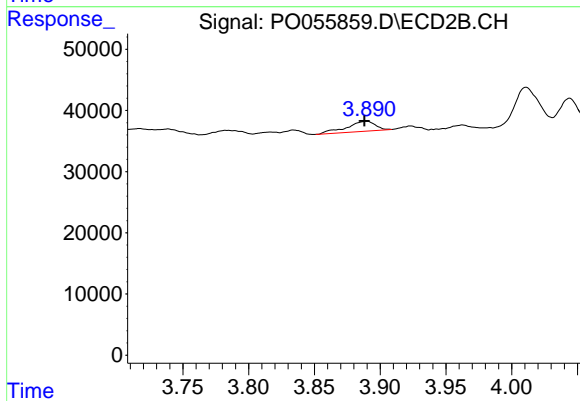
#7 AR-1016-5

R.T.: 5.125 min  
 Delta R.T.: 0.016 min  
 Response: 67751  
 Conc: 61.54 ng/ml



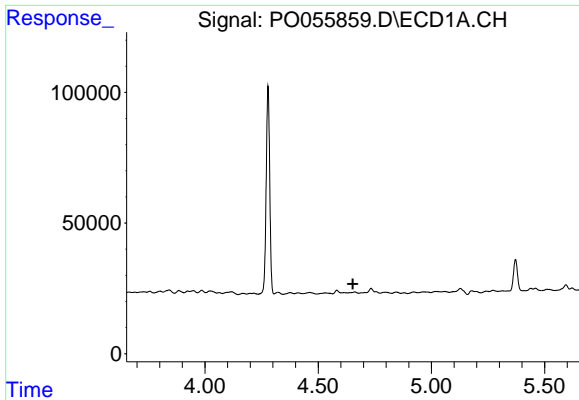
#9 AR-1221-2

R.T.: 0.000 min  
 Exp R.T. : 4.578 min  
 Response: 0  
 Conc: N.D.



#9 AR-1221-2

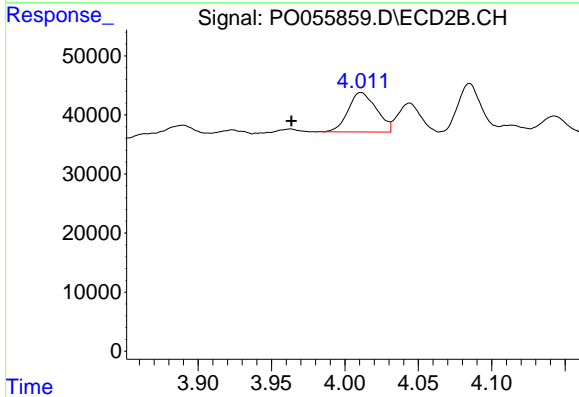
R.T.: 3.890 min  
 Delta R.T.: 0.002 min  
 Response: 25002  
 Conc: 90.15 ng/ml



#10 AR-1221-3

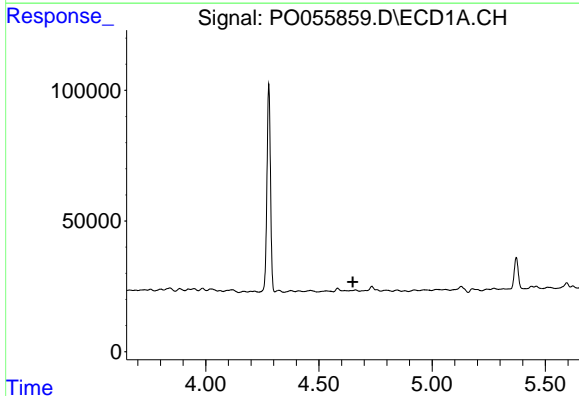
R.T.: 0.000 min  
 Exp R.T. : 4.654 min  
 Response: 0  
 Conc: N.D.

Instrument :  
 ECD\_O  
 ClientSampleId :



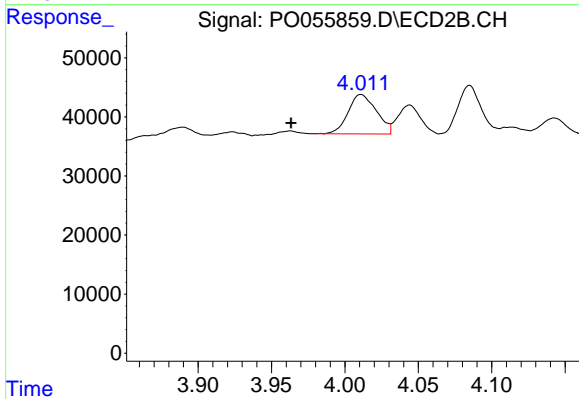
#10 AR-1221-3

R.T.: 4.011 min  
 Delta R.T.: 0.047 min  
 Response: 89823  
 Conc: 101.10 ng/ml



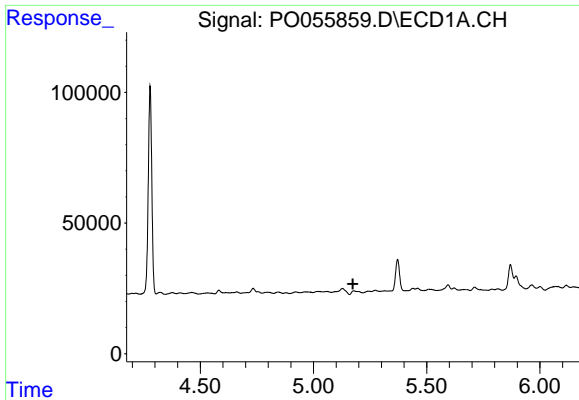
#11 AR-1232-1

R.T.: 0.000 min  
 Exp R.T. : 4.650 min  
 Response: 0  
 Conc: N.D.



#11 AR-1232-1

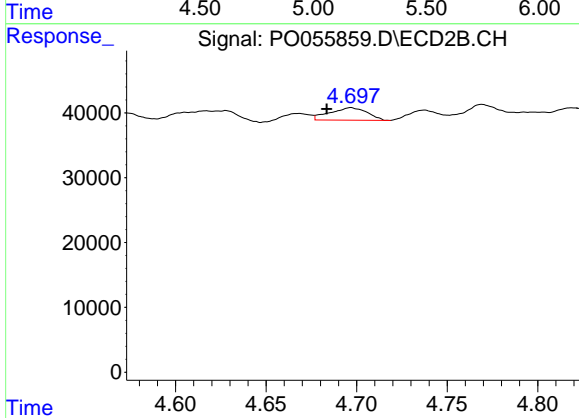
R.T.: 4.011 min  
 Delta R.T.: 0.048 min  
 Response: 89823  
 Conc: 121.37 ng/ml



#12 AR-1232-2

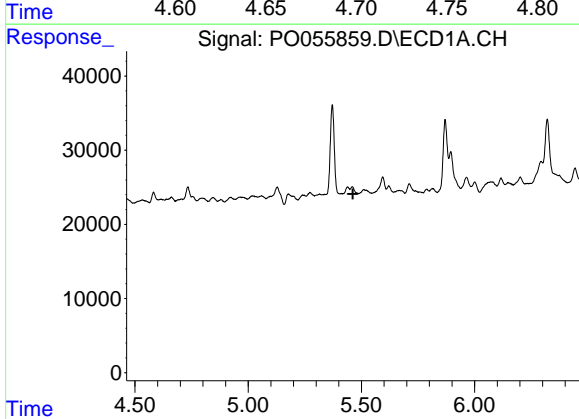
R.T.: 0.000 min  
 Exp R.T.: 5.174 min  
 Response: 0  
 Conc: N.D.

Instrument :  
 ECD\_O  
 ClientSampled :



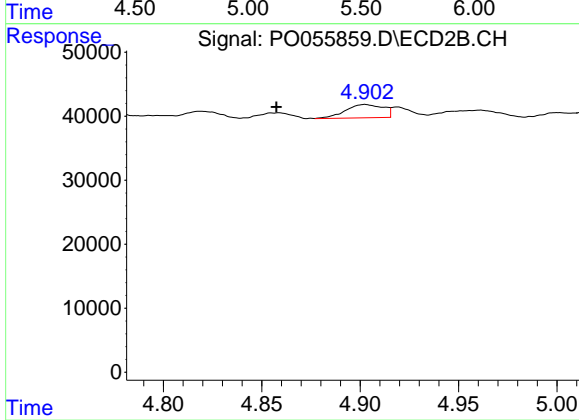
#12 AR-1232-2

R.T.: 4.697 min  
 Delta R.T.: 0.013 min  
 Response: 27515  
 Conc: 31.39 ng/ml



#13 AR-1232-3

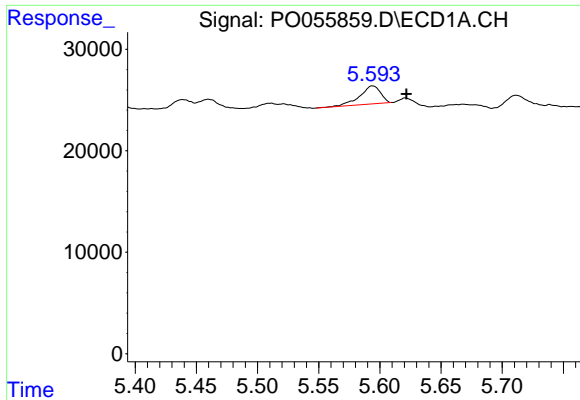
R.T.: 0.000 min  
 Exp R.T.: 5.462 min  
 Response: 0  
 Conc: N.D.



#13 AR-1232-3

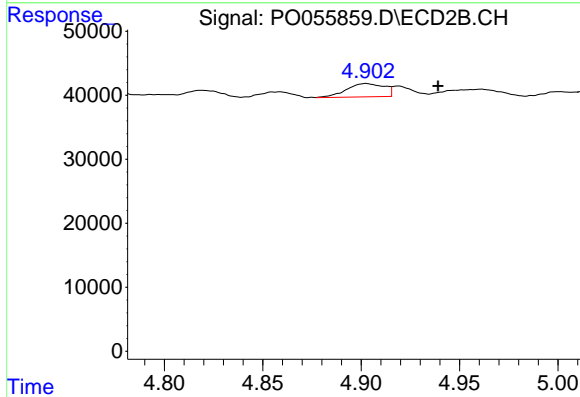
R.T.: 4.902 min  
 Delta R.T.: 0.045 min  
 Response: 27891  
 Conc: 58.15 ng/ml



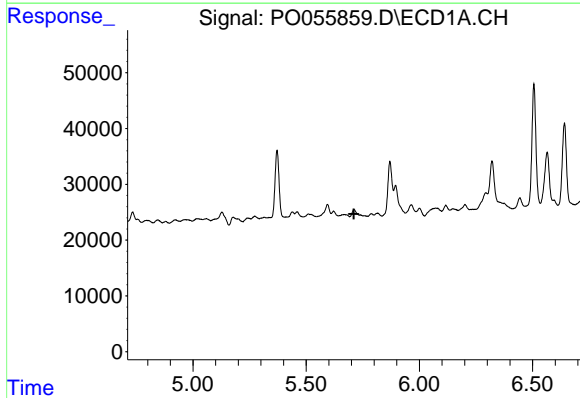


#14 AR-1232-4  
 R.T.: 5.594 min  
 Delta R.T.: -0.028 min  
 Response: 20841  
 Conc: 40.98 ng/ml

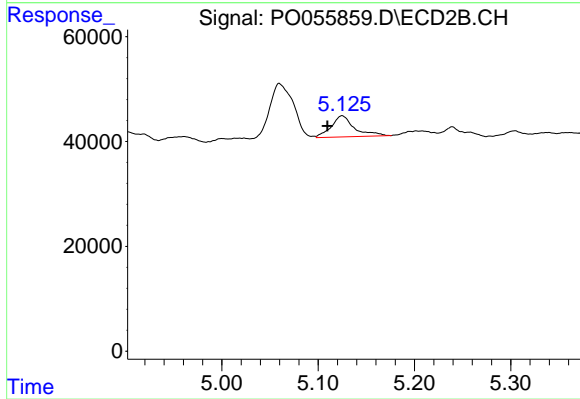
Instrument :  
 ECD\_O  
 ClientSampled :



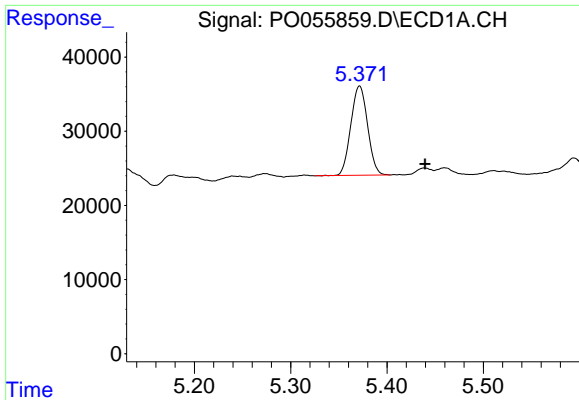
#14 AR-1232-4  
 R.T.: 4.902 min  
 Delta R.T.: -0.037 min  
 Response: 27891  
 Conc: 65.66 ng/ml



#15 AR-1232-5  
 R.T.: 0.000 min  
 Exp R.T. : 5.711 min  
 Response: 0  
 Conc: N.D.

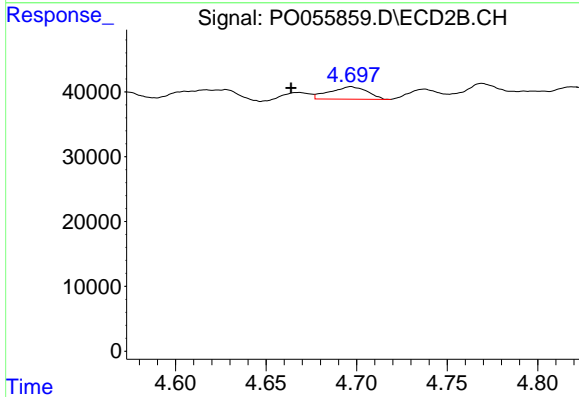


#15 AR-1232-5  
 R.T.: 5.125 min  
 Delta R.T.: 0.015 min  
 Response: 67751  
 Conc: 139.81 ng/ml

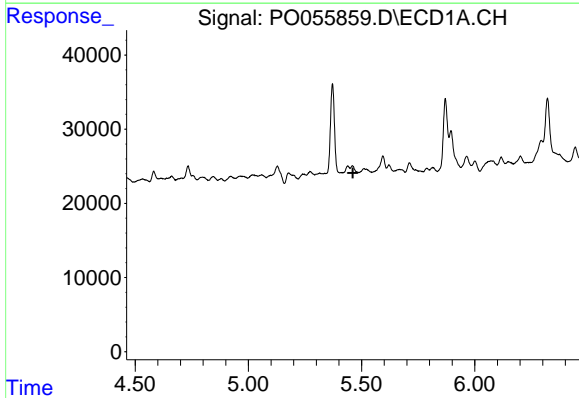


#16 AR-1242-1  
 R.T.: 5.372 min  
 Delta R.T.: -0.068 min  
 Response: 144806  
 Conc: 119.60 ng/ml

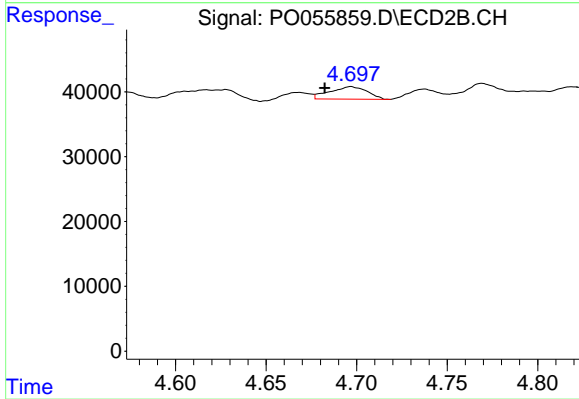
Instrument :  
 ECD\_O  
 ClientSampleId :



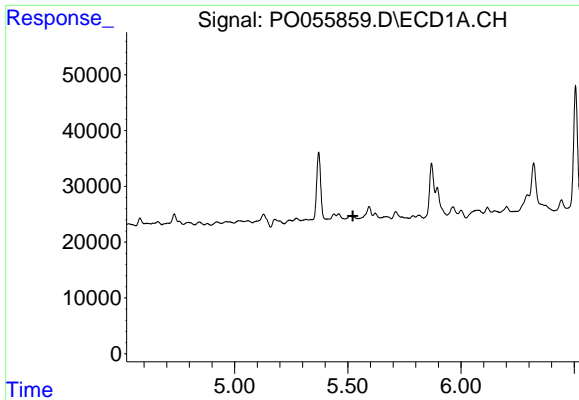
#16 AR-1242-1  
 R.T.: 4.697 min  
 Delta R.T.: 0.033 min  
 Response: 27515  
 Conc: 24.55 ng/ml



#17 AR-1242-2  
 R.T.: 0.000 min  
 Exp R.T. : 5.462 min  
 Response: 0  
 Conc: N.D.



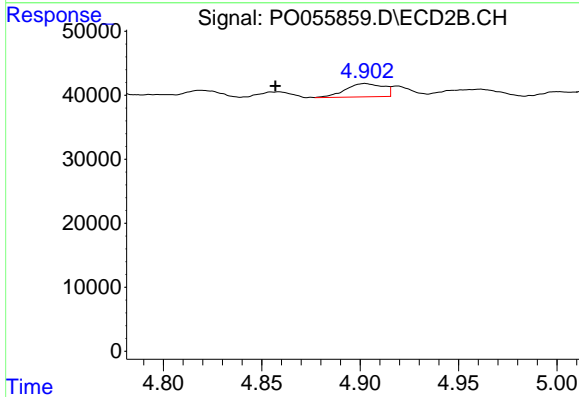
#17 AR-1242-2  
 R.T.: 4.697 min  
 Delta R.T.: 0.015 min  
 Response: 27515  
 Conc: 18.08 ng/ml



#18 AR-1242-3

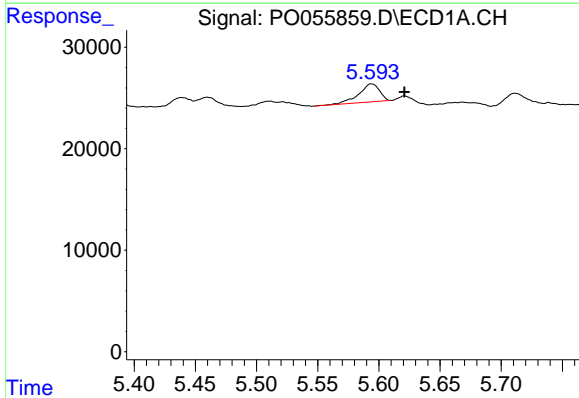
R.T.: 0.000 min  
 Exp R.T.: 5.522 min  
 Response: 0  
 Conc: N.D.

Instrument :  
 ECD\_O  
 ClientSampled :



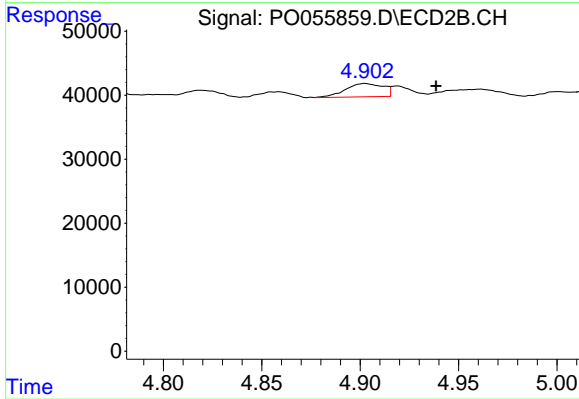
#18 AR-1242-3

R.T.: 4.902 min  
 Delta R.T.: 0.046 min  
 Response: 27891  
 Conc: 32.21 ng/ml



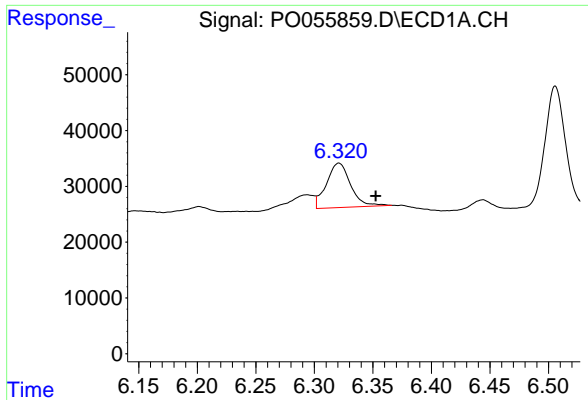
#19 AR-1242-4

R.T.: 5.594 min  
 Delta R.T.: -0.027 min  
 Response: 20841  
 Conc: 23.16 ng/ml



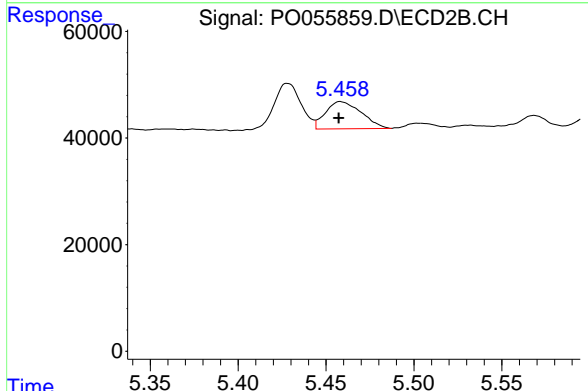
#19 AR-1242-4

R.T.: 4.902 min  
 Delta R.T.: -0.036 min  
 Response: 27891  
 Conc: 33.29 ng/ml

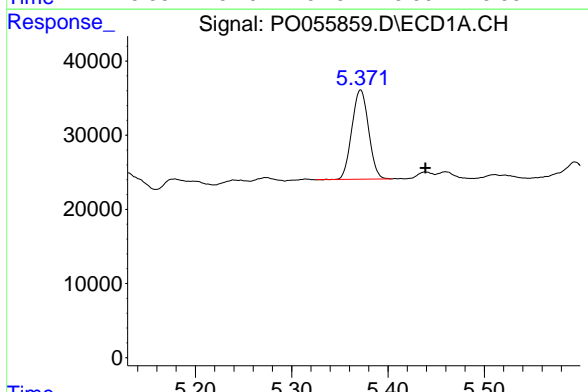


#20 AR-1242-5  
 R.T.: 6.321 min  
 Delta R.T.: -0.031 min  
 Response: 113913  
 Conc: 104.13 ng/ml

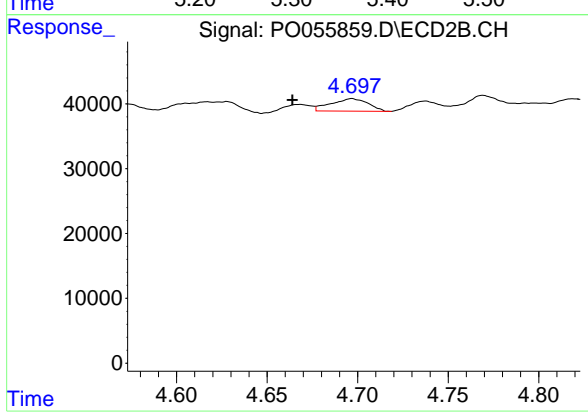
Instrument :  
 ECD\_O  
 ClientSampled :



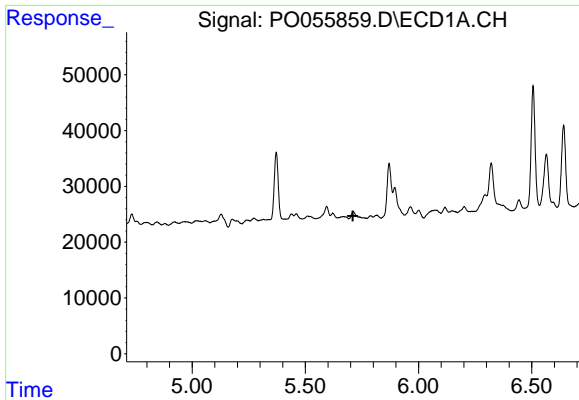
#20 AR-1242-5  
 R.T.: 5.458 min  
 Delta R.T.: 0.000 min  
 Response: 72539  
 Conc: 60.43 ng/ml



#21 AR-1248-1  
 R.T.: 5.372 min  
 Delta R.T.: -0.067 min  
 Response: 144806  
 Conc: 159.99 ng/ml



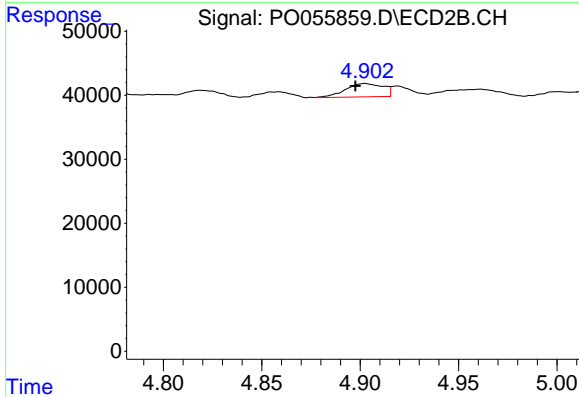
#21 AR-1248-1  
 R.T.: 4.697 min  
 Delta R.T.: 0.033 min  
 Response: 27515  
 Conc: 32.81 ng/ml



#22 AR-1248-2

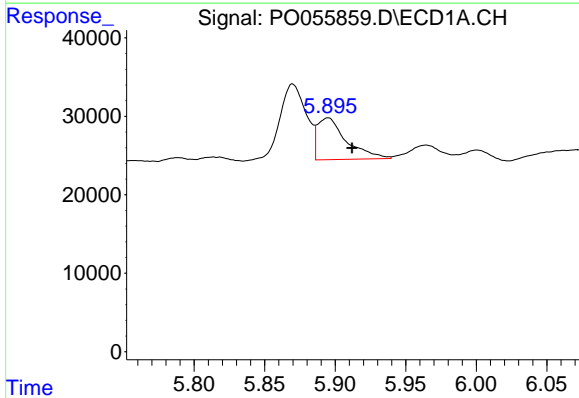
R.T.: 0.000 min  
 Exp R.T.: 5.710 min  
 Response: 0  
 Conc: N.D.

Instrument :  
 ECD\_O  
 ClientSampled :



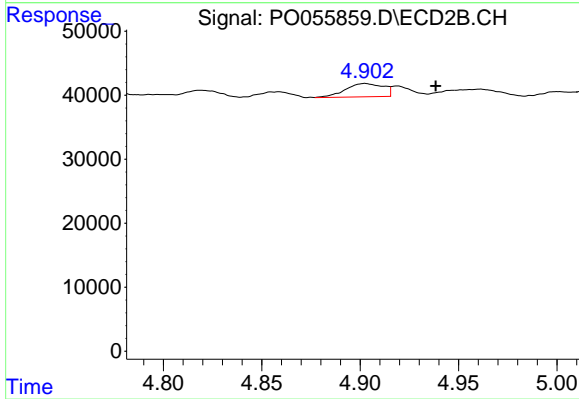
#22 AR-1248-2

R.T.: 4.902 min  
 Delta R.T.: 0.005 min  
 Response: 27891  
 Conc: 25.38 ng/ml



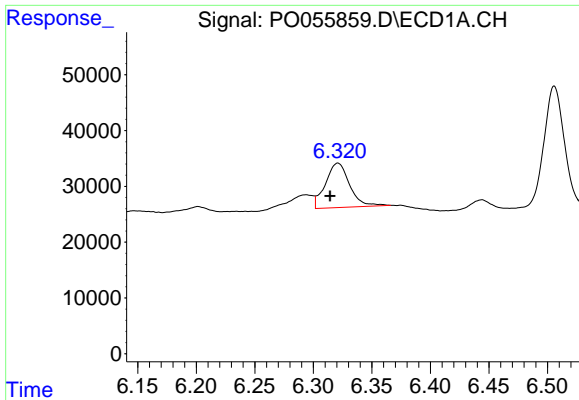
#23 AR-1248-3

R.T.: 5.895 min  
 Delta R.T.: -0.017 min  
 Response: 76096  
 Conc: 51.53 ng/ml



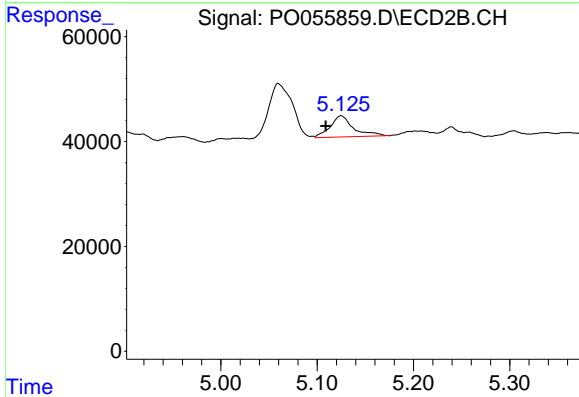
#23 AR-1248-3

R.T.: 4.902 min  
 Delta R.T.: -0.036 min  
 Response: 27891  
 Conc: 24.57 ng/ml

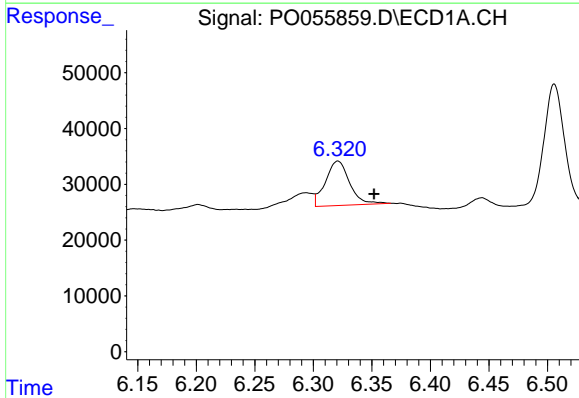


#24 AR-1248-4  
 R.T.: 6.321 min  
 Delta R.T.: 0.007 min  
 Response: 113913  
 Conc: 65.33 ng/ml

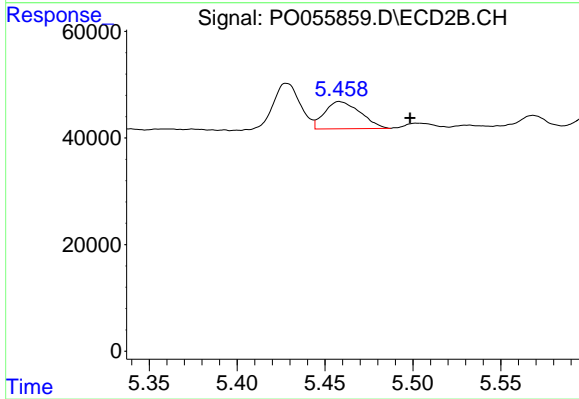
Instrument :  
 ECD\_O  
 ClientSampled :



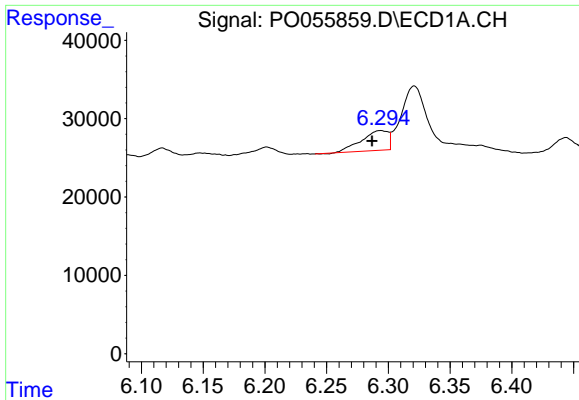
#24 AR-1248-4  
 R.T.: 5.125 min  
 Delta R.T.: 0.016 min  
 Response: 67751  
 Conc: 48.25 ng/ml



#25 AR-1248-5  
 R.T.: 6.321 min  
 Delta R.T.: -0.031 min  
 Response: 113913  
 Conc: 68.20 ng/ml



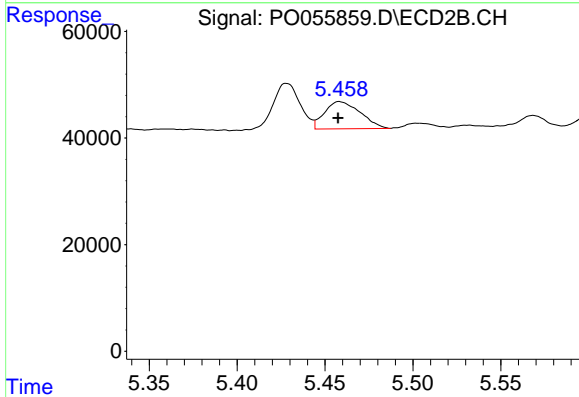
#25 AR-1248-5  
 R.T.: 5.458 min  
 Delta R.T.: -0.040 min  
 Response: 72539  
 Conc: 48.43 ng/ml



#26 AR-1254-1

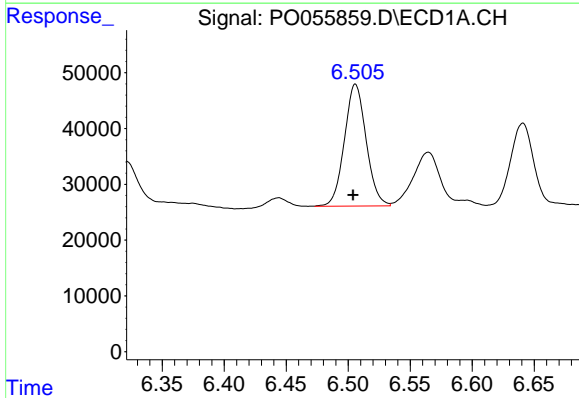
R.T.: 6.294 min  
 Delta R.T.: 0.007 min  
 Response: 38093  
 Conc: 18.14 ng/ml

Instrument :  
 ECD\_O  
 ClientSampleId :



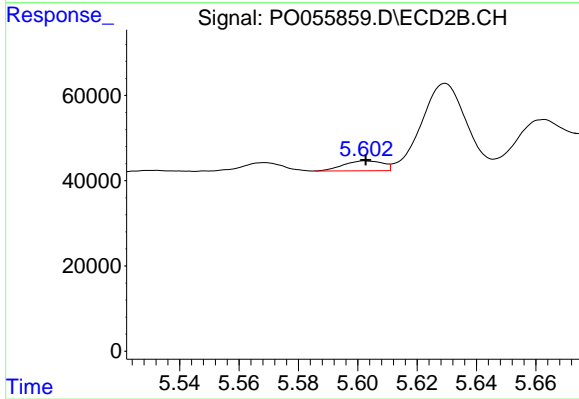
#26 AR-1254-1

R.T.: 5.458 min  
 Delta R.T.: 0.000 min  
 Response: 72539  
 Conc: 27.10 ng/ml



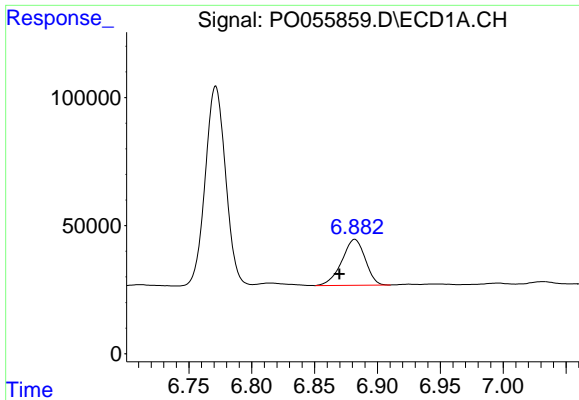
#27 AR-1254-2

R.T.: 6.506 min  
 Delta R.T.: 0.002 min  
 Response: 267048  
 Conc: 80.46 ng/ml



#27 AR-1254-2

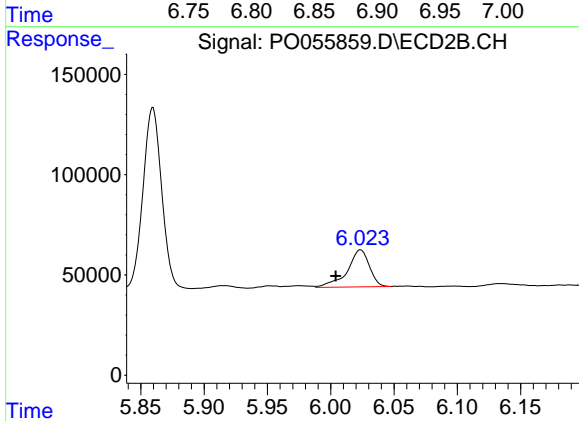
R.T.: 5.602 min  
 Delta R.T.: 0.000 min  
 Response: 21368  
 Conc: 8.75 ng/ml



#28 AR-1254-3

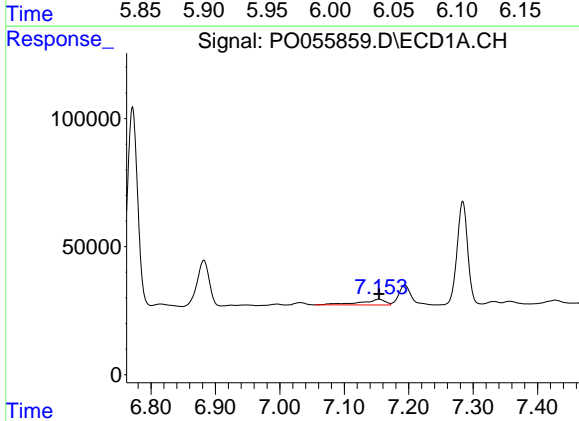
R.T.: 6.882 min  
 Delta R.T.: 0.012 min  
 Response: 232559  
 Conc: 63.97 ng/ml

Instrument :  
 ECD\_O  
 ClientSampled :



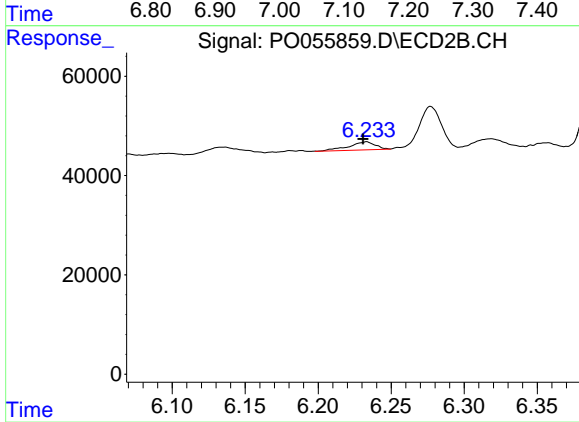
#28 AR-1254-3

R.T.: 6.023 min  
 Delta R.T.: 0.020 min  
 Response: 223284  
 Conc: 56.28 ng/ml



#29 AR-1254-4

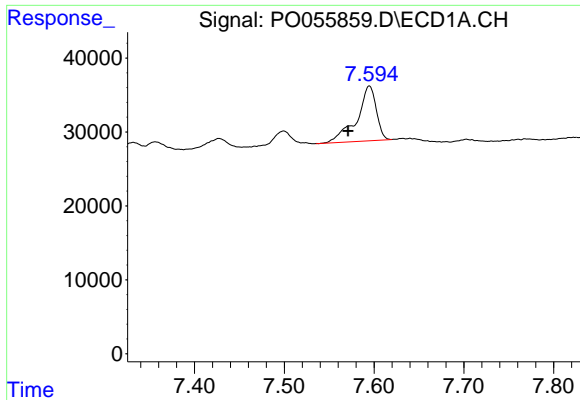
R.T.: 7.153 min  
 Delta R.T.: 0.000 min  
 Response: 58440  
 Conc: 21.48 ng/ml



#29 AR-1254-4

R.T.: 6.233 min  
 Delta R.T.: 0.003 min  
 Response: 20527  
 Conc: 7.66 ng/ml

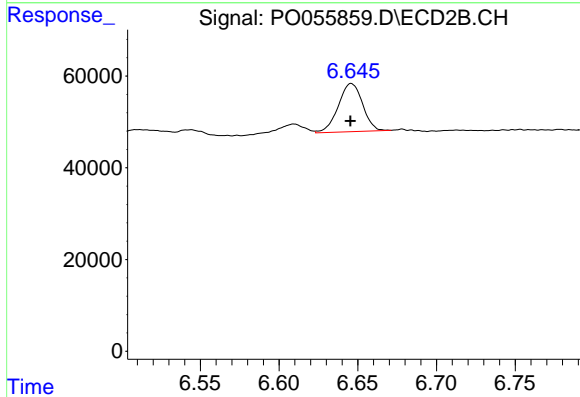




#30 AR-1254-5

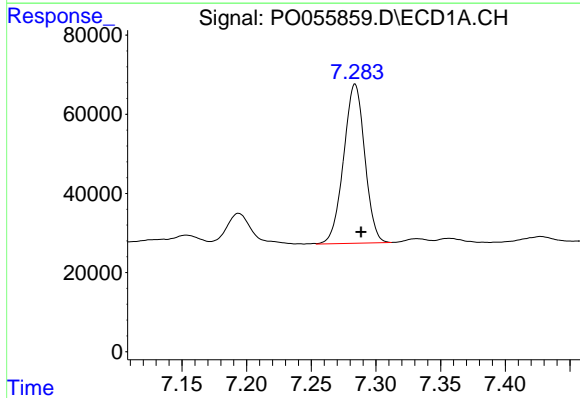
R.T.: 7.595 min  
 Delta R.T.: 0.024 min  
 Response: 112232  
 Conc: 39.16 ng/ml

Instrument :  
 ECD\_O  
 ClientSampleId :



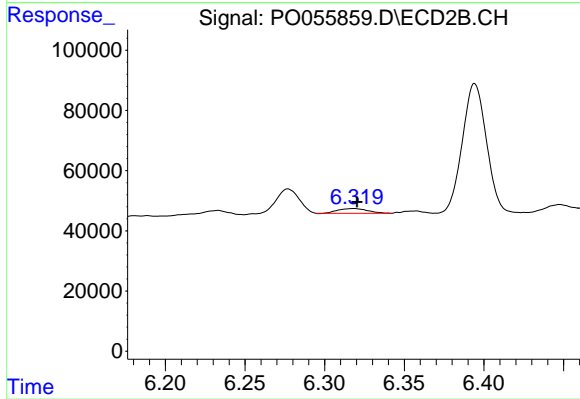
#30 AR-1254-5

R.T.: 6.646 min  
 Delta R.T.: 0.000 min  
 Response: 112894  
 Conc: 31.20 ng/ml



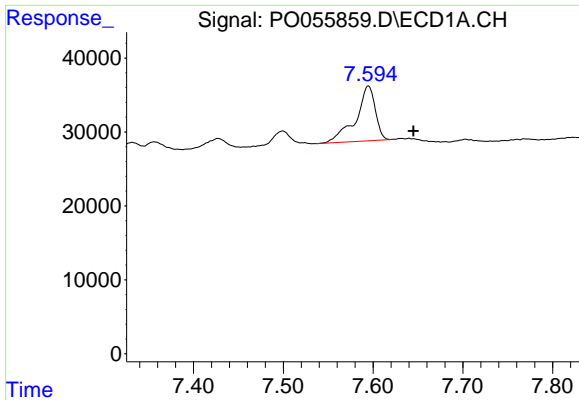
#32 AR-1260-2

R.T.: 7.284 min  
 Delta R.T.: -0.004 min  
 Response: 456900  
 Conc: 174.46 ng/ml



#32 AR-1260-2

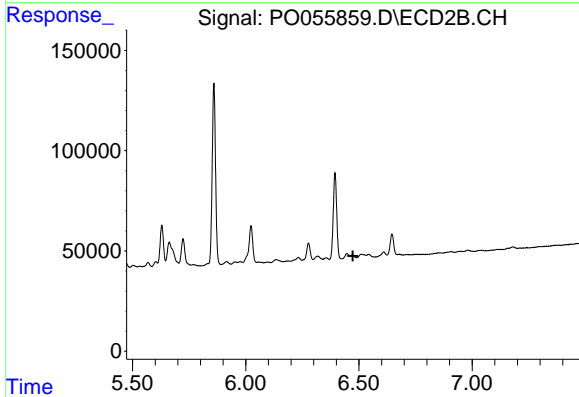
R.T.: 6.319 min  
 Delta R.T.: -0.002 min  
 Response: 20236  
 Conc: 6.63 ng/ml



#33 AR-1260-3

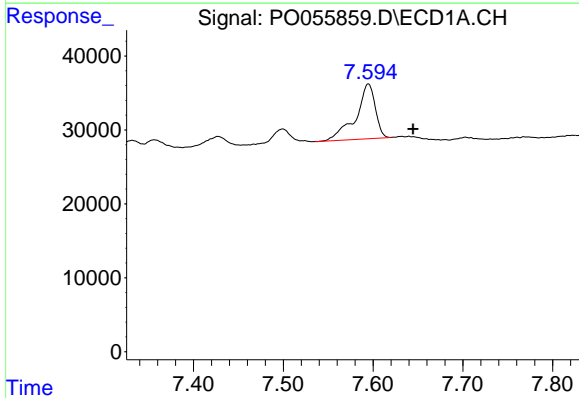
R.T.: 7.595 min  
 Delta R.T.: -0.050 min  
 Response: 112232  
 Conc: 56.12 ng/ml

Instrument :  
 ECD\_O  
 ClientSampled :



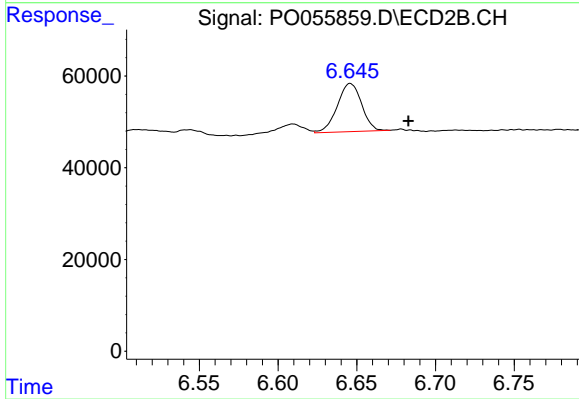
#33 AR-1260-3

R.T.: 0.000 min  
 Exp R.T. : 6.473 min  
 Response: 0  
 Conc: N.D.



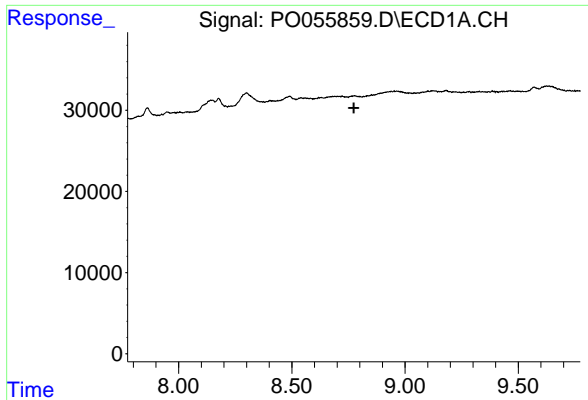
#36 AR-1262-1

R.T.: 7.595 min  
 Delta R.T.: -0.050 min  
 Response: 112232  
 Conc: 35.01 ng/ml



#36 AR-1262-1

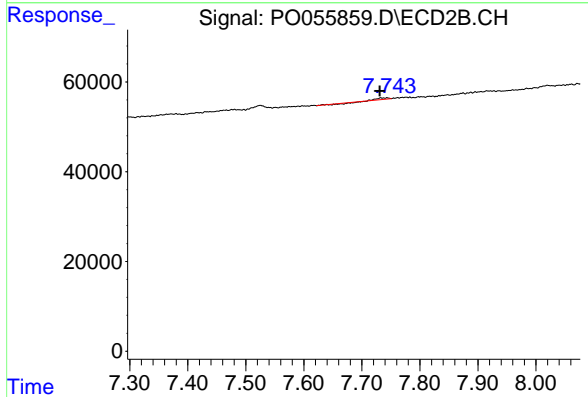
R.T.: 6.646 min  
 Delta R.T.: -0.037 min  
 Response: 112894  
 Conc: 27.53 ng/ml



#43 AR-1268-3

R.T.: 0.000 min  
 Exp R.T.: 8.774 min  
 Response: 0  
 Conc: N.D.

Instrument :  
 ECD\_O  
 ClientSampleId :



#43 AR-1268-3

R.T.: 7.743 min  
 Delta R.T.: 0.013 min  
 Response: 582  
 Conc: 0.12 ng/ml