

Data Path : Z:\pestpcbsrv\HPCHEM1\ECD_0\Data\P0050319\
 Data File : P0055868.D
 Signal(s) : Signal #1: ECD1A.CH Signal #2: ECD2B.CH
 Acq On : 04 May 2019 4:09
 Operator : SM/SJ
 Sample : K2668-03
 Misc :
 ALS Vial : 32 Sample Multiplier: 1

Instrument :
 ECD_0
 ClientSampleId :

Integration File signal 1: autoint1.e
 Integration File signal 2: autoint2.e
 Quant Time: May 04 06:56:44 2019
 Quant Method : Z:\pestpcbsrv\HPCHEM1\ECD_0\methods\P0050319.M
 Quant Title : GC EXTRACTABLES
 QLast Update : Fri May 03 15:20:04 2019
 Response via : Initial Calibration
 Integrator: ChemStation 6890 Scale Mode: Small noise peaks clipped

Volume Inj. : 2 µl
 Signal #1 Phase : ZB-MR1 Signal #2 Phase: ZB-MR2
 Signal #1 Info : 30Mx0.32mmx 0.50µ Signal #2 Info : 30M x 0.32mm x 0.25µm

Compound	RT#1	RT#2	Resp#1	Resp#2	ng/ml	ng/ml

System Monitoring Compounds						
1) SA Tetrachlo...	4.278	3.592	984564	998935	32.900	35.369
2) SA Decachlor...	9.878	8.544	623360	438334	16.660	16.209
Target Compounds						
9) L2 AR-1221-2	0.000	3.891	0	17757	N.D.	64.025 #
20) L4 AR-1242-5	0.000	5.456	0	18587	N.D.	15.484 #
25) L5 AR-1248-5	0.000	5.456	0	18587	N.D.	12.410 #
26) L6 AR-1254-1	0.000	5.456	0	18587	N.D.	6.945 #
27) L6 AR-1254-2	6.506	0.000	21257	0	6.405	N.D. #
28) L6 AR-1254-3	6.873	6.007	38792	26710	10.670	6.732 #
30) L6 AR-1254-5	0.000	6.646	0	17068	N.D.	4.717 #
36) L8 AR-1262-1	0.000	6.646	0	17068	N.D.	4.162 #
45) L9 AR-1268-5	0.000	8.268	0	16644	N.D.	1.367 #

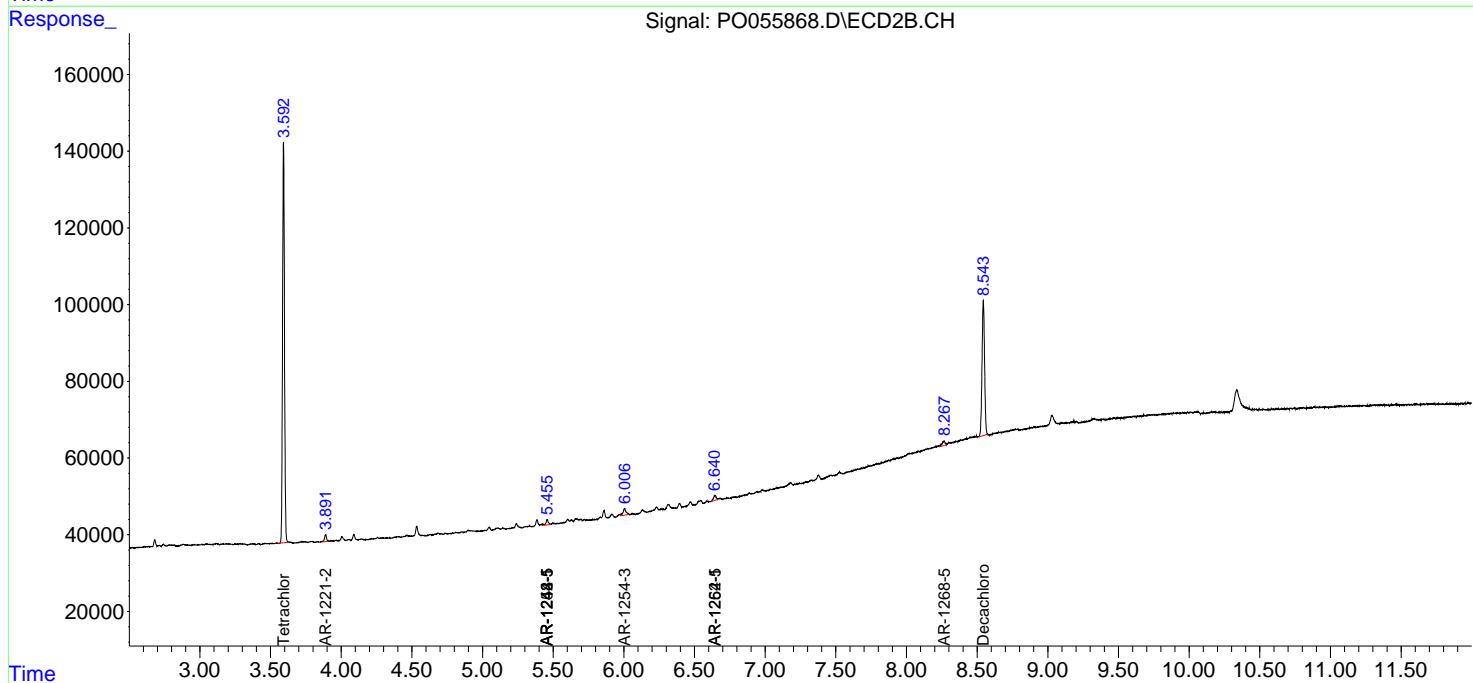
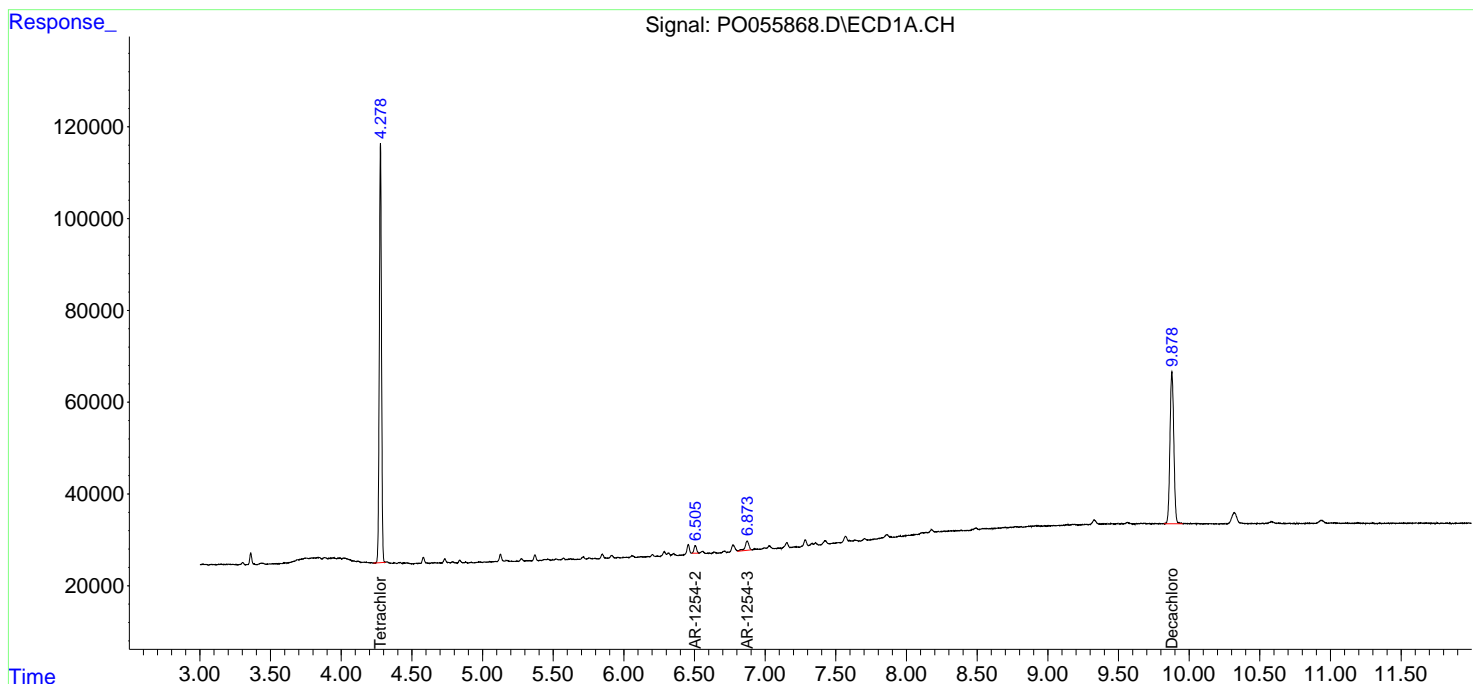
(f)=RT Delta > 1/2 Window (#)=Amounts differ by > 25% (m)=manual int.

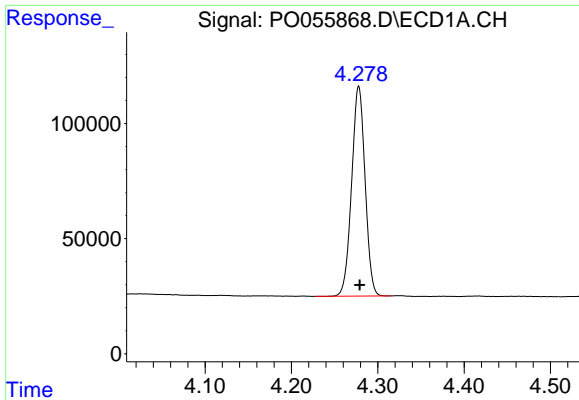
Data Path : Z:\pestpcbsrv\HPCHEM1\ECD_0\Data\P0050319\
 Data File : P0055868.D
 Signal(s) : Signal #1: ECD1A.CH Signal #2: ECD2B.CH
 Acq On : 04 May 2019 4:09
 Operator : SM/SJ
 Sample : K2668-03
 Misc :
 ALS Vial : 32 Sample Multiplier: 1

Instrument :
 ECD_O
 ClientSampled :

Integration File signal 1: autoint1.e
 Integration File signal 2: autoint2.e
 Quant Time: May 04 06:56:44 2019
 Quant Method : Z:\pestpcbsrv\HPCHEM1\ECD_0\methods\P0050319.M
 Quant Title : GC EXTRACTABLES
 QLast Update : Fri May 03 15:20:04 2019
 Response via : Initial Calibration
 Integrator: ChemStation 6890 Scale Mode: Small noise peaks clipped

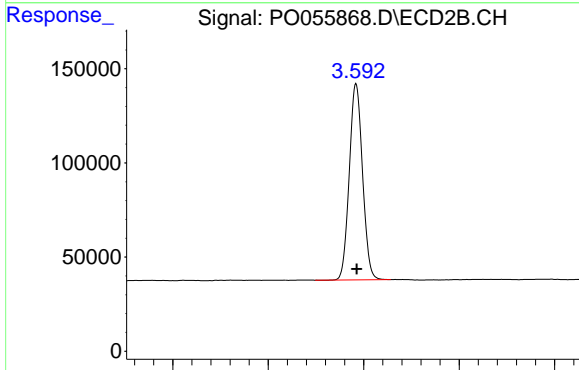
Volume Inj. : 2 µl
 Signal #1 Phase : ZB-MR1 Signal #2 Phase: ZB-MR2
 Signal #1 Info : 30Mx0.32mmx 0.50µ Signal #2 Info : 30M x 0.32mm x 0.25µm



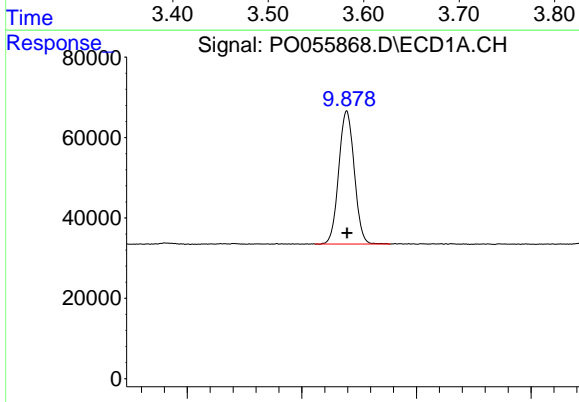


#1 Tetrachloro-m-xylene
 R.T.: 4.278 min
 Delta R.T.: 0.000 min
 Response: 984564
 Conc: 32.90 ng/ml

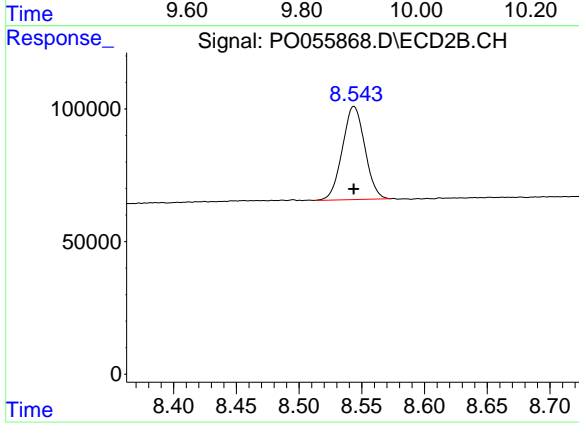
Instrument :
 ECD_O
 ClientSampled :



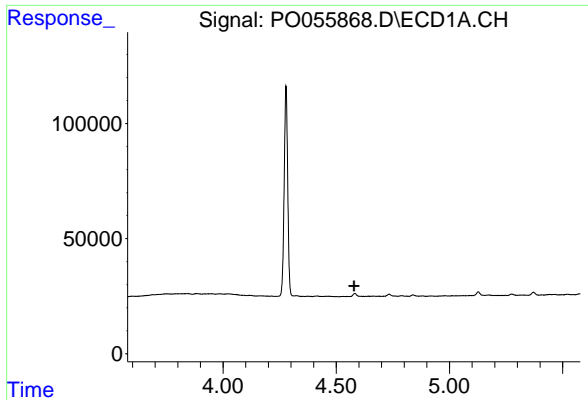
#1 Tetrachloro-m-xylene
 R.T.: 3.592 min
 Delta R.T.: 0.000 min
 Response: 998935
 Conc: 35.37 ng/ml



#2 Decachlorobiphenyl
 R.T.: 9.878 min
 Delta R.T.: 0.000 min
 Response: 623360
 Conc: 16.66 ng/ml



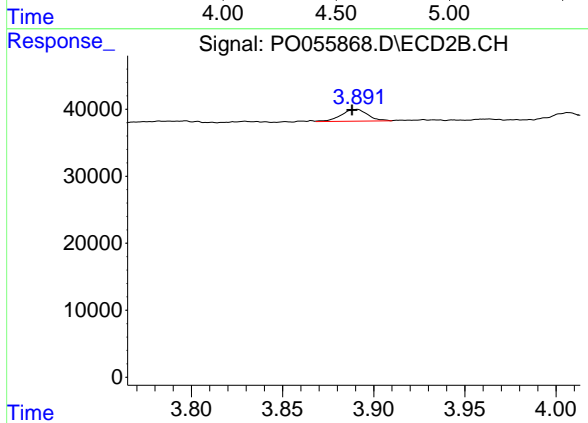
#2 Decachlorobiphenyl
 R.T.: 8.544 min
 Delta R.T.: 0.000 min
 Response: 438334
 Conc: 16.21 ng/ml



#9 AR-1221-2

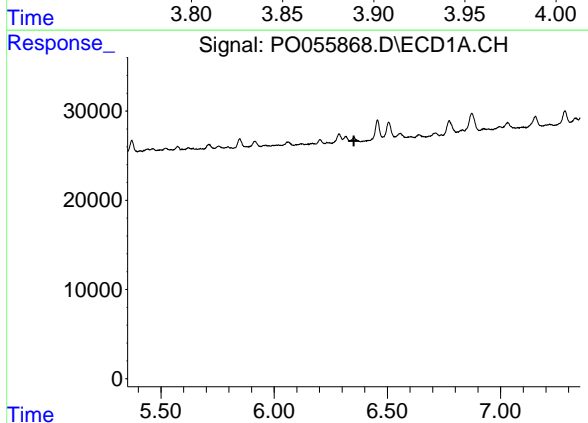
R.T.: 0.000 min
 Exp R.T. : 4.578 min
 Response: 0
 Conc: N.D.

Instrument :
 ECD_O
 ClientSampleId :



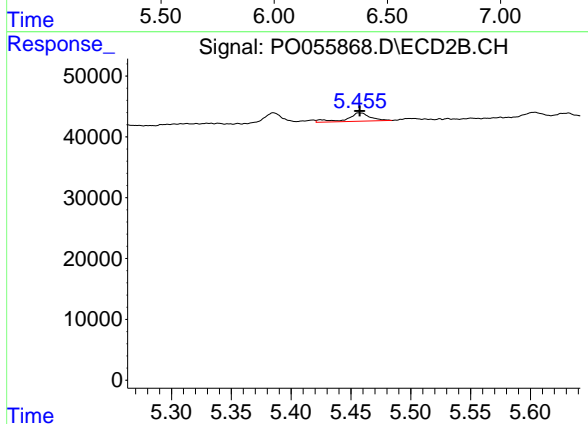
#9 AR-1221-2

R.T.: 3.891 min
 Delta R.T.: 0.003 min
 Response: 17757
 Conc: 64.02 ng/ml



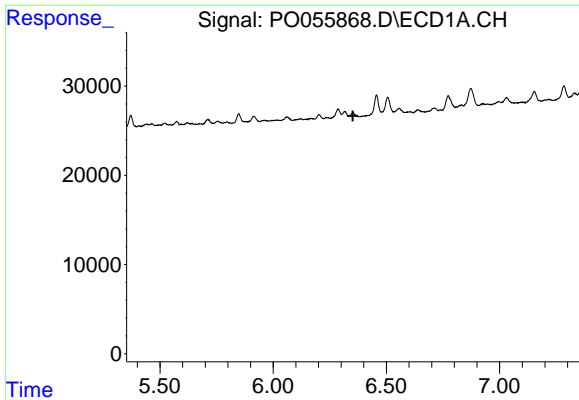
#20 AR-1242-5

R.T.: 0.000 min
 Exp R.T. : 6.352 min
 Response: 0
 Conc: N.D.



#20 AR-1242-5

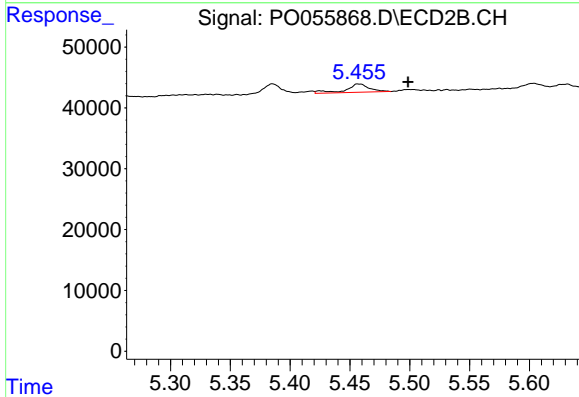
R.T.: 5.456 min
 Delta R.T.: -0.001 min
 Response: 18587
 Conc: 15.48 ng/ml



#25 AR-1248-5

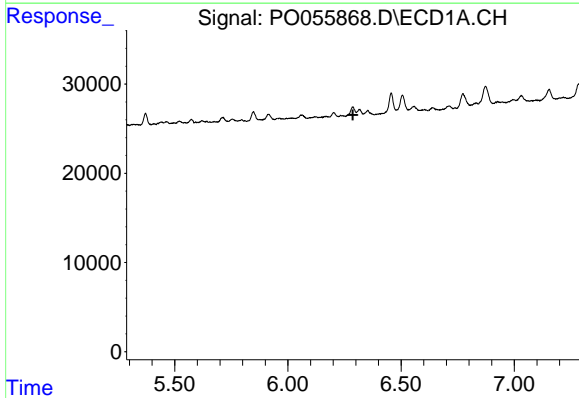
R.T.: 0.000 min
 Exp R.T. : 6.352 min
 Response: 0
 Conc: N.D.

Instrument :
 ECD_O
 ClientSampleId :



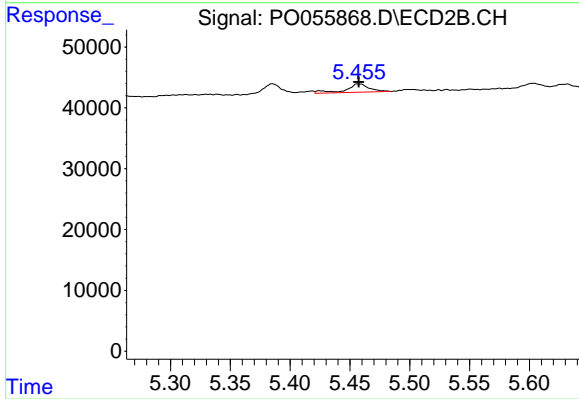
#25 AR-1248-5

R.T.: 5.456 min
 Delta R.T.: -0.042 min
 Response: 18587
 Conc: 12.41 ng/ml



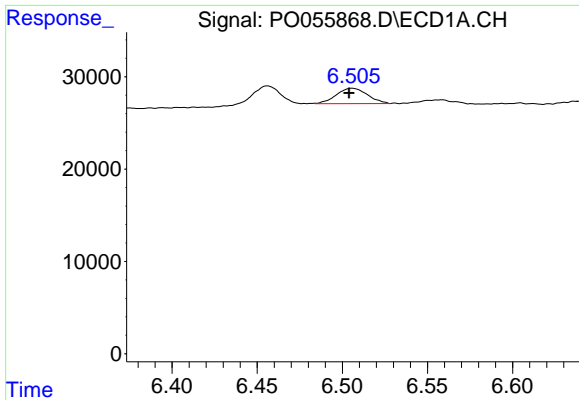
#26 AR-1254-1

R.T.: 0.000 min
 Exp R.T. : 6.287 min
 Response: 0
 Conc: N.D.



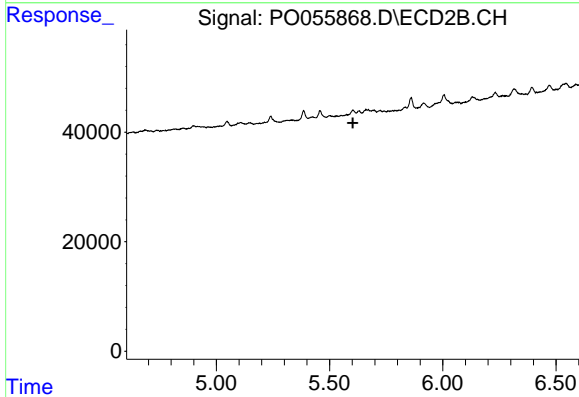
#26 AR-1254-1

R.T.: 5.456 min
 Delta R.T.: -0.001 min
 Response: 18587
 Conc: 6.95 ng/ml

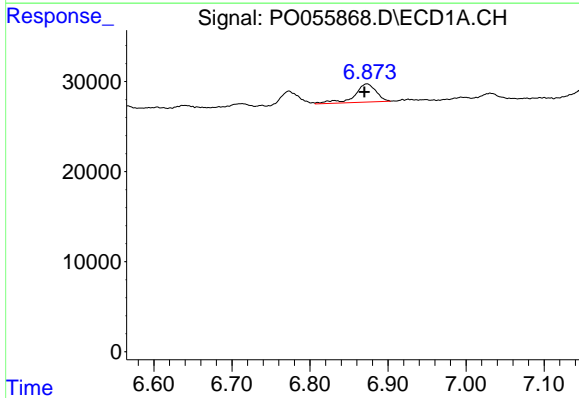


#27 AR-1254-2
 R.T.: 6.506 min
 Delta R.T.: 0.002 min
 Response: 21257
 Conc: 6.40 ng/ml

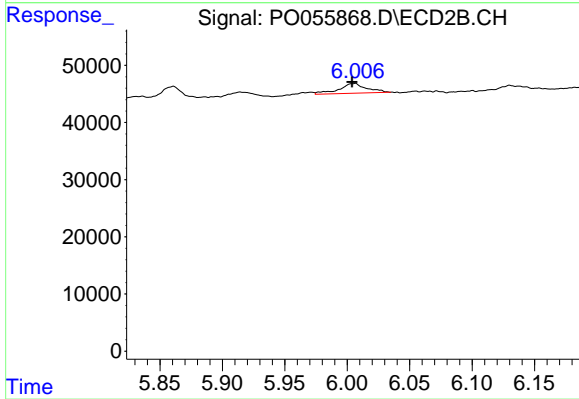
Instrument :
 ECD_O
 ClientSampleId :



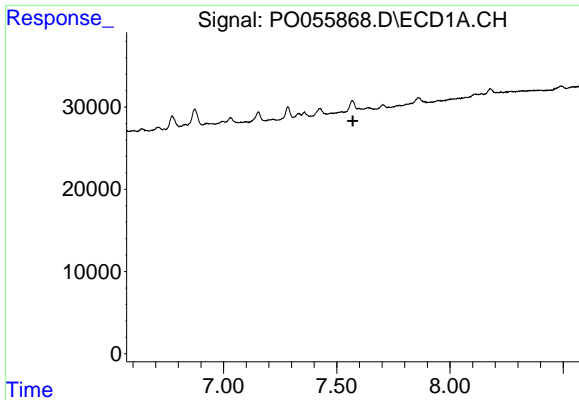
#27 AR-1254-2
 R.T.: 0.000 min
 Exp R.T. : 5.603 min
 Response: 0
 Conc: N.D.



#28 AR-1254-3
 R.T.: 6.873 min
 Delta R.T.: 0.004 min
 Response: 38792
 Conc: 10.67 ng/ml



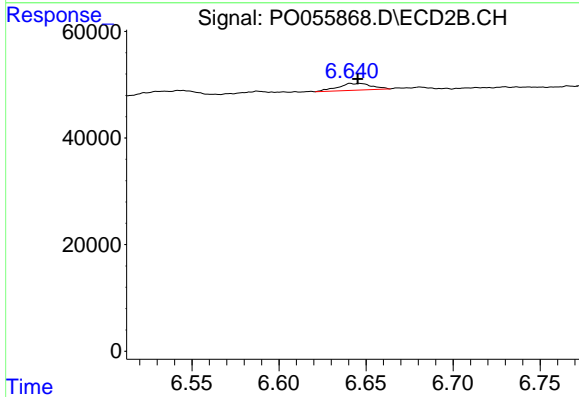
#28 AR-1254-3
 R.T.: 6.007 min
 Delta R.T.: 0.003 min
 Response: 26710
 Conc: 6.73 ng/ml



#30 AR-1254-5

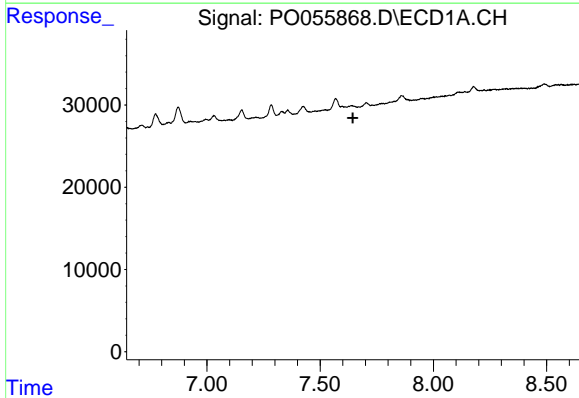
R.T.: 0.000 min
 Exp R.T. : 7.571 min
 Response: 0
 Conc: N.D.

Instrument :
 ECD_O
 ClientSampleId :



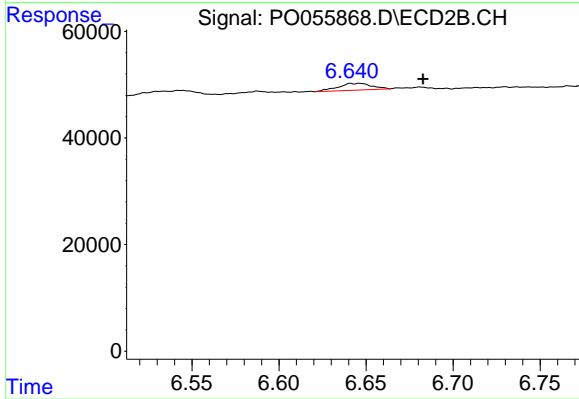
#30 AR-1254-5

R.T.: 6.646 min
 Delta R.T.: 0.000 min
 Response: 17068
 Conc: 4.72 ng/ml



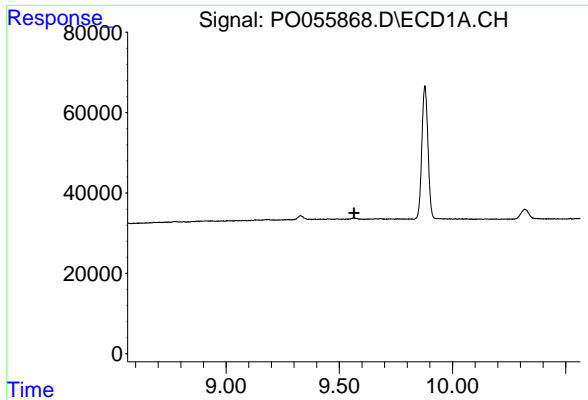
#36 AR-1262-1

R.T.: 0.000 min
 Exp R.T. : 7.645 min
 Response: 0
 Conc: N.D.



#36 AR-1262-1

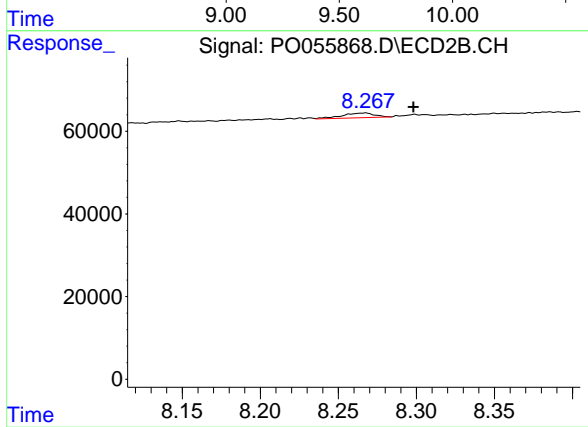
R.T.: 6.646 min
 Delta R.T.: -0.037 min
 Response: 17068
 Conc: 4.16 ng/ml



#45 AR-1268-5

R.T.: 0.000 min
Exp R.T.: 9.565 min
Response: 0
Conc: N.D.

Instrument :
ECD_O
ClientSampled :



#45 AR-1268-5

R.T.: 8.268 min
Delta R.T.: -0.030 min
Response: 16644
Conc: 1.37 ng/ml