

Data Path : Z:\pestpcbsrv\HPCHEM1\ECD_0\Data\P0050319\
 Data File : P0055872.D
 Signal(s) : Signal #1: ECD1A.CH Signal #2: ECD2B.CH
 Acq On : 04 May 2019 5:16
 Operator : SM/SJ
 Sample : K2677-01MS
 Misc :
 ALS Vial : 36 Sample Multiplier: 1

Instrument :
 ECD_O
 ClientSampled :

Integration File signal 1: autoint1.e
 Integration File signal 2: autoint2.e
 Quant Time: May 04 06:58:22 2019
 Quant Method : Z:\pestpcbsrv\HPCHEM1\ECD_0\methods\P0050319.M
 Quant Title : GC EXTRACTABLES
 QLast Update : Fri May 03 15:20:04 2019
 Response via : Initial Calibration
 Integrator: ChemStation 6890 Scale Mode: Small noise peaks clipped

Volume Inj. : 2 µl
 Signal #1 Phase : ZB-MR1 Signal #2 Phase: ZB-MR2
 Signal #1 Info : 30Mx0.32mmx 0.50µ Signal #2 Info : 30M x 0.32mm x 0.25µm

Compound	RT#1	RT#2	Resp#1	Resp#2	ng/ml	ng/ml
System Monitoring Compounds						
1) SA Tetrachlo...	4.278	3.592	809361	768835	27.046	27.222
2) SA Decachlor...	9.879	8.544	666909	472244	17.824	17.463
Target Compounds						
3) L1 AR-1016-1	5.440	4.664	387817	371255	272.895	276.250
4) L1 AR-1016-2	5.462	4.683	549230	490612	277.547	268.689
5) L1 AR-1016-3	5.523	4.857	401116	272486	312.947	271.908
6) L1 AR-1016-4	5.621	4.898	1047803	216507	1002.464	266.099 #
7) L1 AR-1016-5	5.913	5.109	393274	381514	349.106	346.560
8) L2 AR-1221-1	4.482	3.801	34022	26346	78.258	71.761
9) L2 AR-1221-2	4.574	3.889	55339	41588	165.024	149.946
10) L2 AR-1221-3	4.650	3.963	191867	163135	190.800	183.607
11) L3 AR-1232-1	4.650	3.963	191867	163135	223.386	220.429
12) L3 AR-1232-2	5.174	4.683	269911	490612	556.384	559.773
13) L3 AR-1232-3	5.462	4.857	549230	272486	567.688	568.071
14) L3 AR-1232-4	5.621	4.939	1047803	257639	2060.415	606.548 #
15) L3 AR-1232-5	5.711	5.109	732236	381514	1686.502	787.265 #
16) L4 AR-1242-1	5.440	4.664	387817	371255	320.299	331.294
17) L4 AR-1242-2	5.462	4.683	549230	490612	325.297	322.464
18) L4 AR-1242-3	5.523	4.857	401116	272486	366.135	314.644
19) L4 AR-1242-4	5.621	4.939	1047803	257639	1164.457	307.555 #
20) L4 AR-1242-5	6.353	5.458	47678	237998	43.582	198.266 #
21) L5 AR-1248-1	5.440	4.664	387817	371255	428.470	442.746
22) L5 AR-1248-2	5.711	4.898	732236	216507	549.059	197.046 #
23) L5 AR-1248-3	5.913	4.939	393274	257639	266.314	226.966
24) L5 AR-1248-4	6.314	5.109	53690	381514	30.790	271.699 #
25) L5 AR-1248-5	6.353	5.500	47678	43788	28.544	29.237
26) L6 AR-1254-1	6.287	5.458	227811	237998	108.490	88.927
27) L6 AR-1254-2	6.504	5.604	255855	217633	77.092	89.095
28) L6 AR-1254-3	6.871	6.019	154740	398450	42.563	100.426 #
29) L6 AR-1254-4	7.154	6.232	146447	50481	53.827	18.828 #
30) L6 AR-1254-5	7.571	6.646	632625	601415	220.725	166.197
31) L7 AR-1260-1	7.032	6.133	538708	480557	249.460	218.119
32) L7 AR-1260-2	7.288	6.320	571869	601885	218.363	197.108
33) L7 AR-1260-3	7.645	6.472	266062	432958	133.032	173.737 #
34) L7 AR-1260-4	7.870	6.941	465697	352180	201.373	170.674
35) L7 AR-1260-5	8.179	7.181	713079	842717	168.087	167.796
36) L8 AR-1262-1	7.645	6.682	266062	430752	82.993	105.041 #
37) L8 AR-1262-2	8.179	7.181	713079	842717	132.821	134.774
38) L8 AR-1262-3	8.491	7.462	457953	171394	126.197	69.589 #
39) L8 AR-1262-4	8.542	7.526	243334	541644	89.623	132.271 #
40) L8 AR-1262-5	9.181	8.019	160358	158625	88.767	93.082
41) L9 AR-1268-1	8.491	7.462	457953	171394	75.834	24.737 #

Data Path : Z:\pestpcbsrv\HPCHEM1\ECD_0\Data\P0050319\
 Data File : P0055872.D
 Signal(s) : Signal #1: ECD1A.CH Signal #2: ECD2B.CH
 Acq On : 04 May 2019 5:16
 Operator : SM/SJ
 Sample : K2677-01MS
 Misc :
 ALS Vial : 36 Sample Multiplier: 1

Instrument :
 ECD_0
 ClientSampleId :

Integration File signal 1: autoint1.e
 Integration File signal 2: autoint2.e
 Quant Time: May 04 06:58:22 2019
 Quant Method : Z:\pestpcbsrv\HPCHEM1\ECD_0\methods\P0050319.M
 Quant Title : GC EXTRACTABLES
 QLast Update : Fri May 03 15:20:04 2019
 Response via : Initial Calibration
 Integrator: ChemStation 6890 Scale Mode: Small noise peaks clipped

Volume Inj. : 2 µl
 Signal #1 Phase : ZB-MR1 Signal #2 Phase: ZB-MR2
 Signal #1 Info : 30Mx0.32mmx 0.50µ Signal #2 Info : 30M x 0.32mm x 0.25µm

	Compound	RT#1	RT#2	Resp#1	Resp#2	ng/ml	ng/ml
42)	L9 AR-1268-2	8.542	7.526	243334	541644	44.455	95.206 #
43)	L9 AR-1268-3	0.000	7.733	0	32662	N.D.	6.915 #
44)	L9 AR-1268-4	9.181	8.019	160358	158625	81.724	83.853
45)	L9 AR-1268-5	9.568	8.300	56841	46946	4.213	3.855

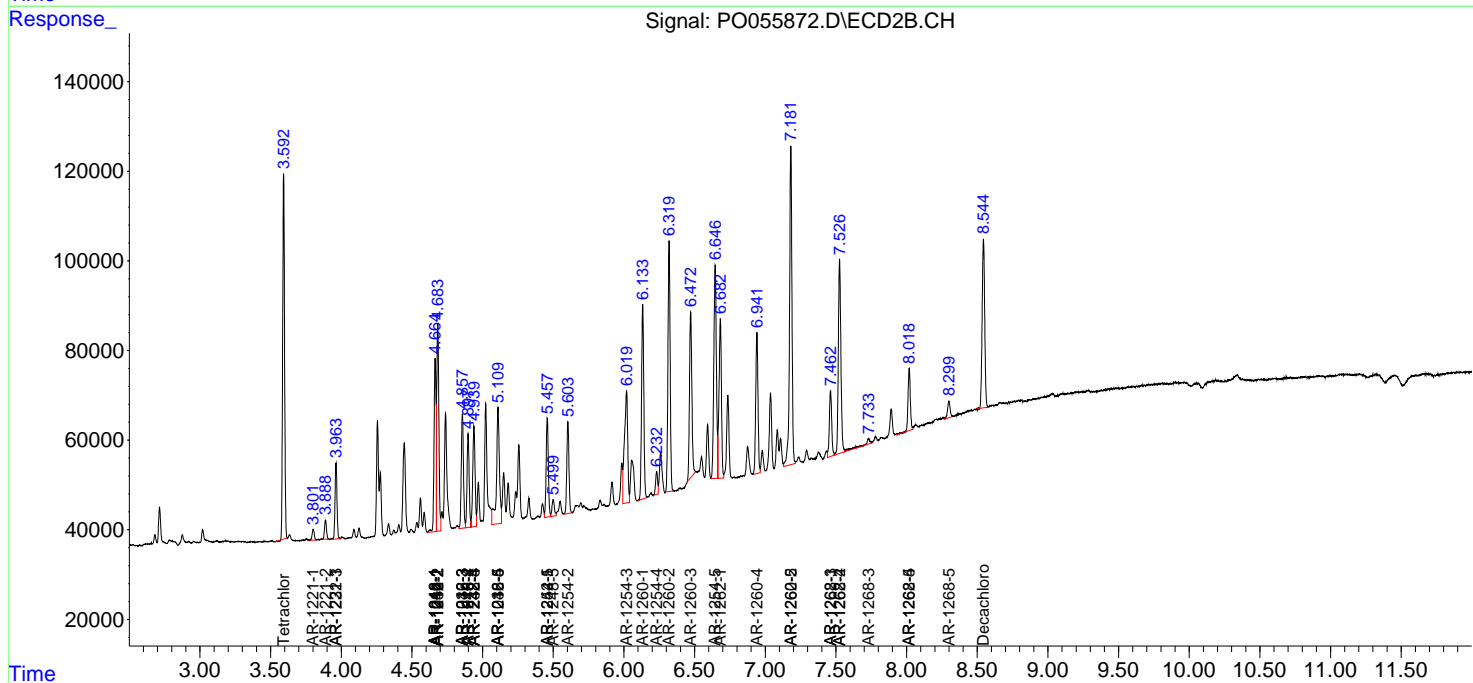
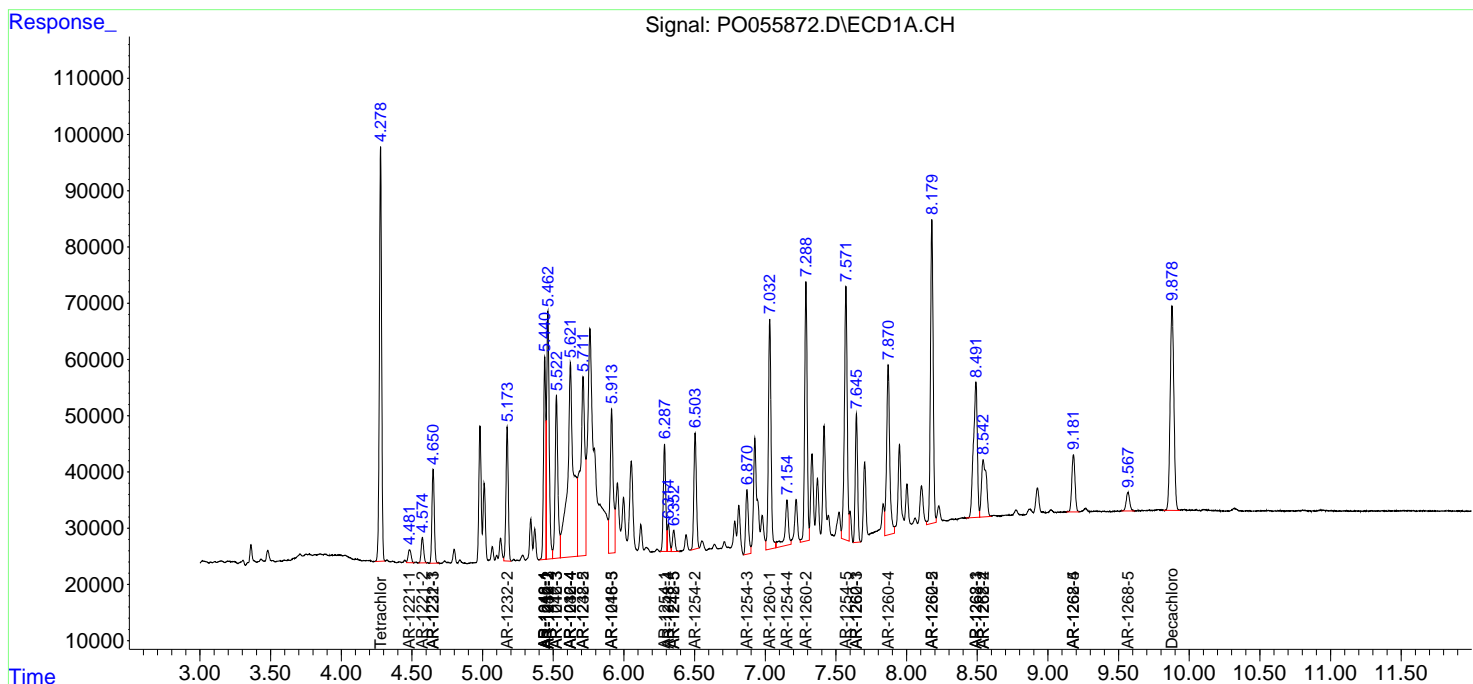
(f)=RT Delta > 1/2 Window (#)=Amounts differ by > 25% (m)=manual int.

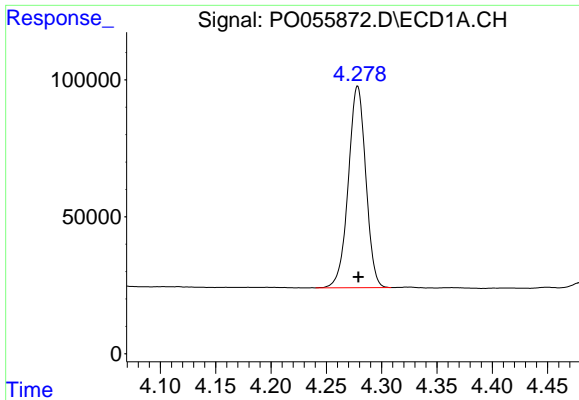
Data Path : Z:\pestpcbsrv\HPCHEM1\ECD_0\Data\PO050319\
 Data File : PO055872.D
 Signal(s) : Signal #1: ECD1A.CH Signal #2: ECD2B.CH
 Acq On : 04 May 2019 5:16
 Operator : SM/SJ
 Sample : K2677-01MS
 Misc :
 ALS Vial : 36 Sample Multiplier: 1

Instrument :
 ECD_O
 ClientSampled :

Integration File signal 1: autoint1.e
 Integration File signal 2: autoint2.e
 Quant Time: May 04 06:58:22 2019
 Quant Method : Z:\pestpcbsrv\HPCHEM1\ECD_0\methods\PO050319.M
 Quant Title : GC EXTRACTABLES
 QLast Update : Fri May 03 15:20:04 2019
 Response via : Initial Calibration
 Integrator: ChemStation 6890 Scale Mode: Small noise peaks clipped

Volume Inj. : 2 µl
 Signal #1 Phase : ZB-MR1 Signal #2 Phase: ZB-MR2
 Signal #1 Info : 30Mx0.32mmx 0.50µ Signal #2 Info : 30M x 0.32mm x 0.25µm

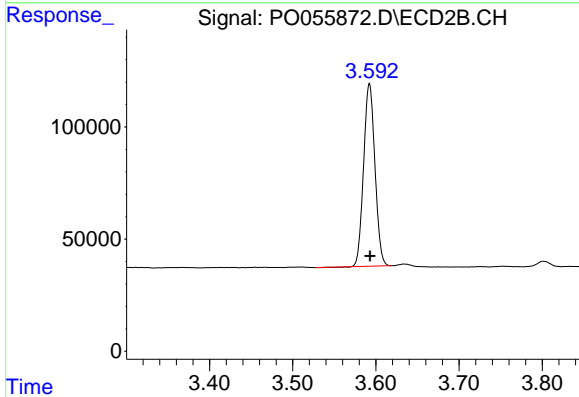




#1 Tetrachloro-m-xylene

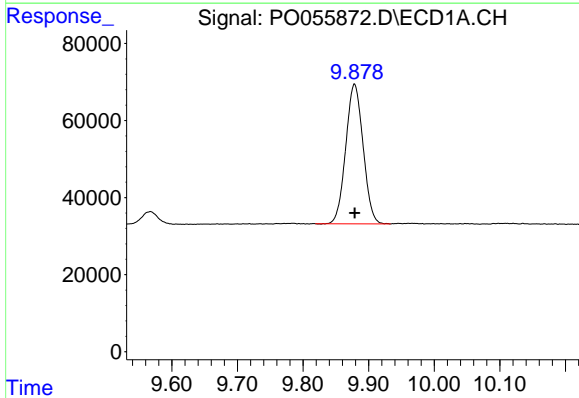
R.T.: 4.278 min
 Delta R.T.: 0.000 min
 Response: 809361
 Conc: 27.05 ng/ml

Instrument :
 ECD_O
 ClientSampled :



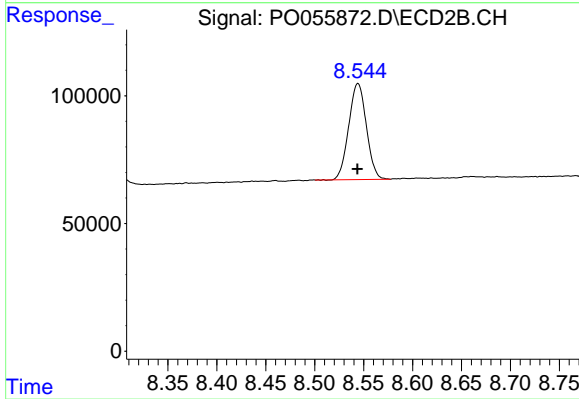
#1 Tetrachloro-m-xylene

R.T.: 3.592 min
 Delta R.T.: 0.000 min
 Response: 768835
 Conc: 27.22 ng/ml



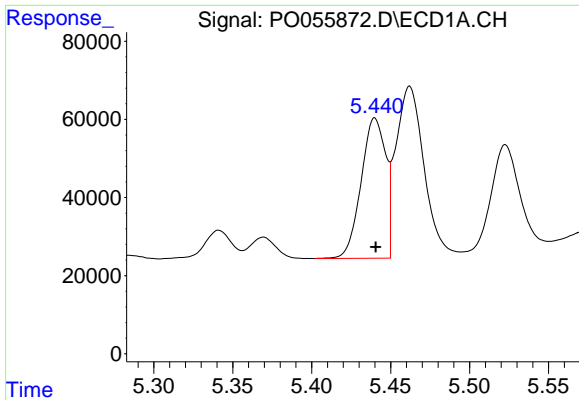
#2 Decachlorobiphenyl

R.T.: 9.879 min
 Delta R.T.: 0.000 min
 Response: 666909
 Conc: 17.82 ng/ml



#2 Decachlorobiphenyl

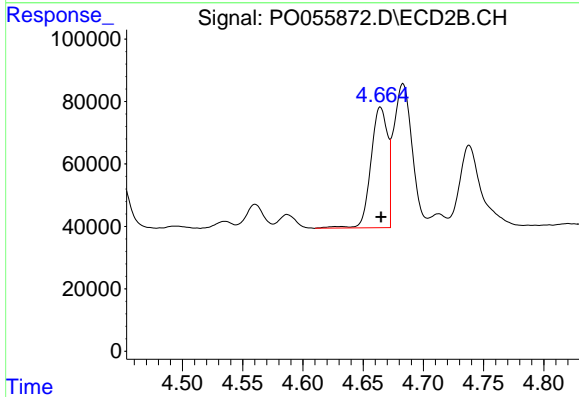
R.T.: 8.544 min
 Delta R.T.: 0.000 min
 Response: 472244
 Conc: 17.46 ng/ml



#3 AR-1016-1

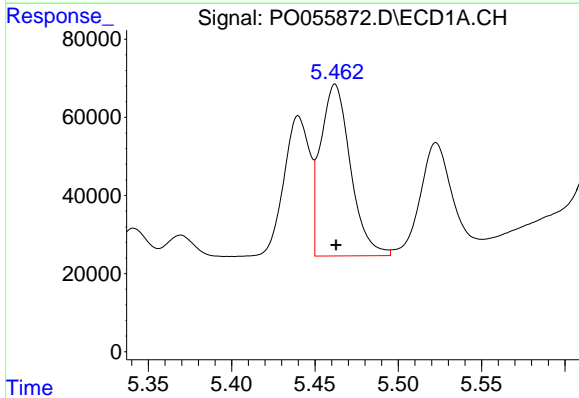
R.T.: 5.440 min
 Delta R.T.: 0.000 min
 Response: 387817
 Conc: 272.90 ng/ml

Instrument :
 ECD_O
 ClientSampled :



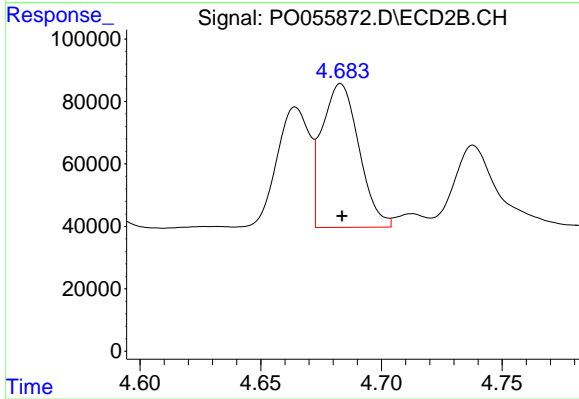
#3 AR-1016-1

R.T.: 4.664 min
 Delta R.T.: 0.000 min
 Response: 371255
 Conc: 276.25 ng/ml



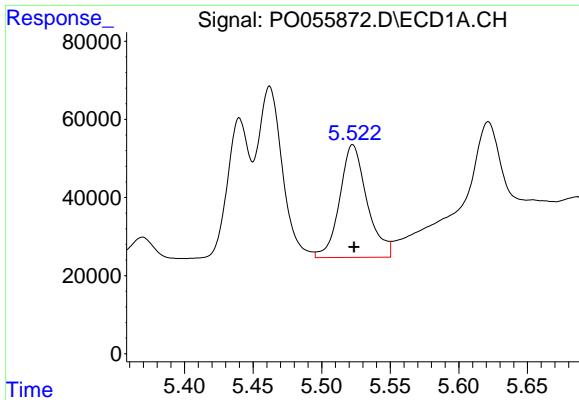
#4 AR-1016-2

R.T.: 5.462 min
 Delta R.T.: 0.000 min
 Response: 549230
 Conc: 277.55 ng/ml



#4 AR-1016-2

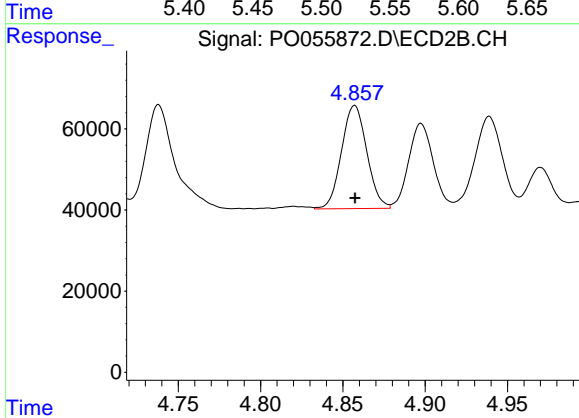
R.T.: 4.683 min
 Delta R.T.: 0.000 min
 Response: 490612
 Conc: 268.69 ng/ml



#5 AR-1016-3

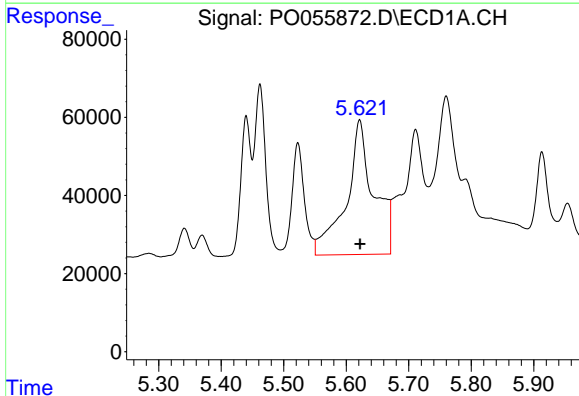
R.T.: 5.523 min
 Delta R.T.: 0.000 min
 Response: 401116
 Conc: 312.95 ng/ml

Instrument :
 ECD_O
 ClientSampleId :



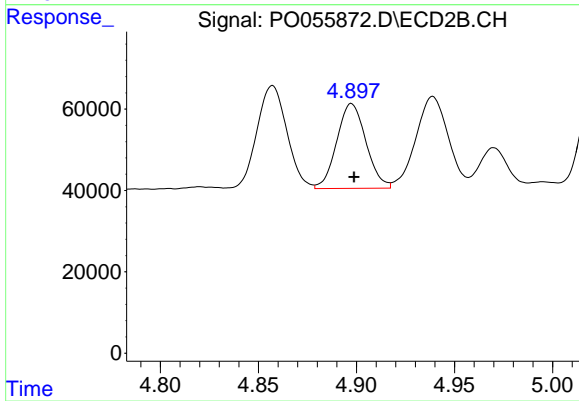
#5 AR-1016-3

R.T.: 4.857 min
 Delta R.T.: 0.000 min
 Response: 272486
 Conc: 271.91 ng/ml



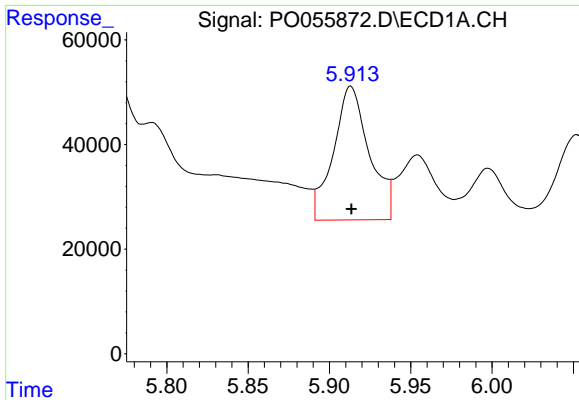
#6 AR-1016-4

R.T.: 5.621 min
 Delta R.T.: 0.000 min
 Response: 1047803
 Conc: 1002.46 ng/ml



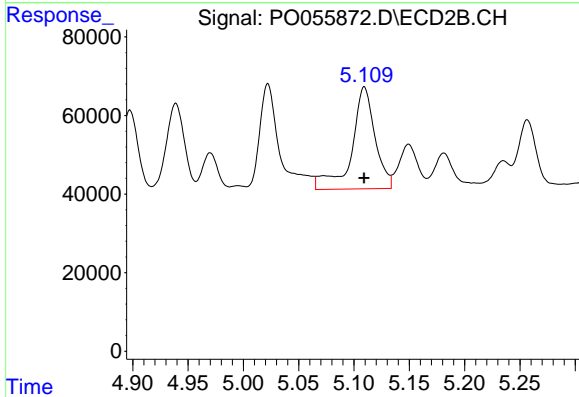
#6 AR-1016-4

R.T.: 4.898 min
 Delta R.T.: -0.001 min
 Response: 216507
 Conc: 266.10 ng/ml

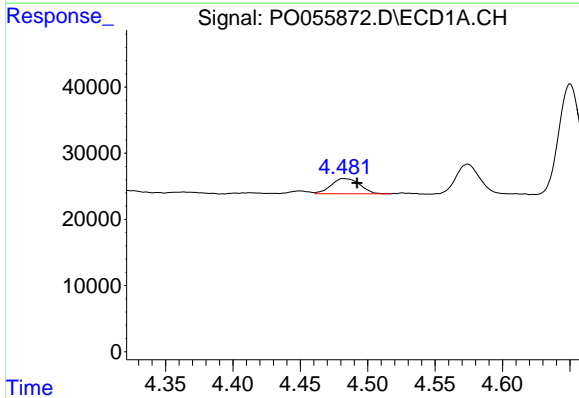


#7 AR-1016-5
 R.T.: 5.913 min
 Delta R.T.: 0.000 min
 Response: 393274
 Conc: 349.11 ng/ml

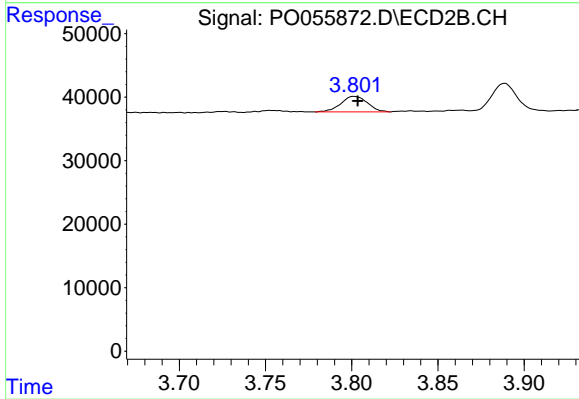
Instrument :
 ECD_O
 ClientSampleId :



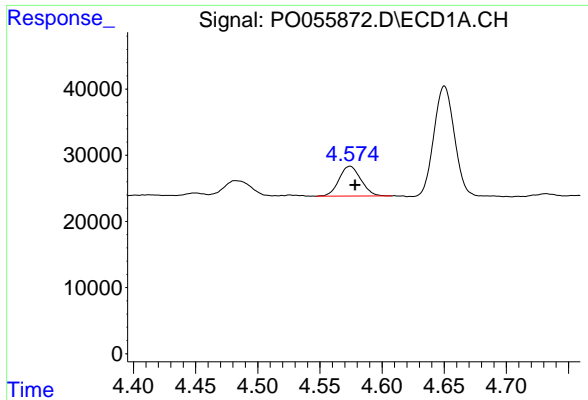
#7 AR-1016-5
 R.T.: 5.109 min
 Delta R.T.: 0.000 min
 Response: 381514
 Conc: 346.56 ng/ml



#8 AR-1221-1
 R.T.: 4.482 min
 Delta R.T.: -0.010 min
 Response: 34022
 Conc: 78.26 ng/ml

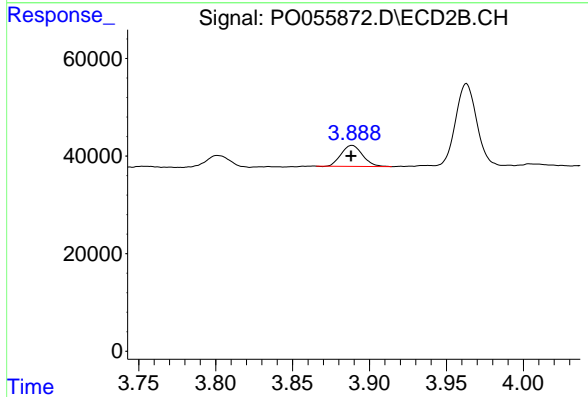


#8 AR-1221-1
 R.T.: 3.801 min
 Delta R.T.: -0.002 min
 Response: 26346
 Conc: 71.76 ng/ml

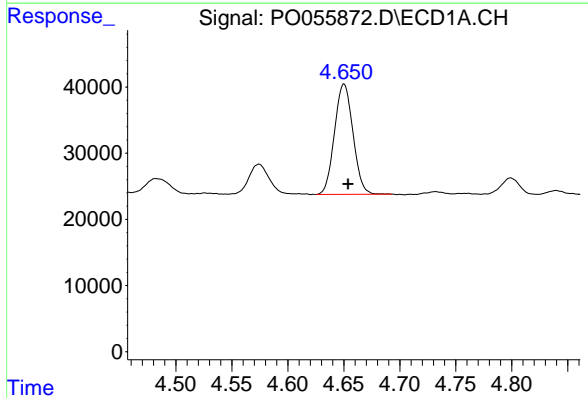


#9 AR-1221-2
 R.T.: 4.574 min
 Delta R.T.: -0.004 min
 Response: 55339
 Conc: 165.02 ng/ml

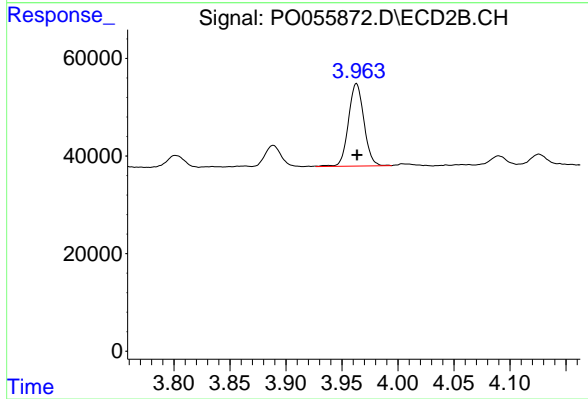
Instrument :
 ECD_O
 ClientSampleId :



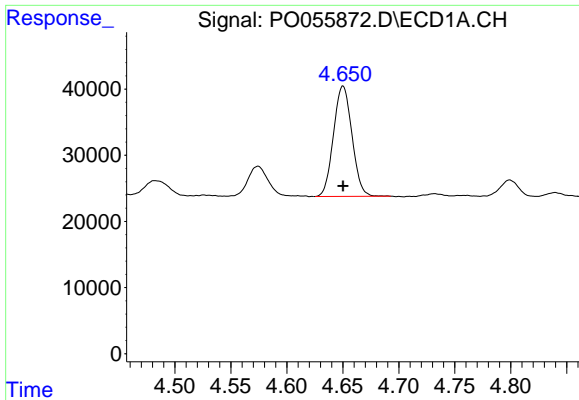
#9 AR-1221-2
 R.T.: 3.889 min
 Delta R.T.: 0.000 min
 Response: 41588
 Conc: 149.95 ng/ml



#10 AR-1221-3
 R.T.: 4.650 min
 Delta R.T.: -0.003 min
 Response: 191867
 Conc: 190.80 ng/ml

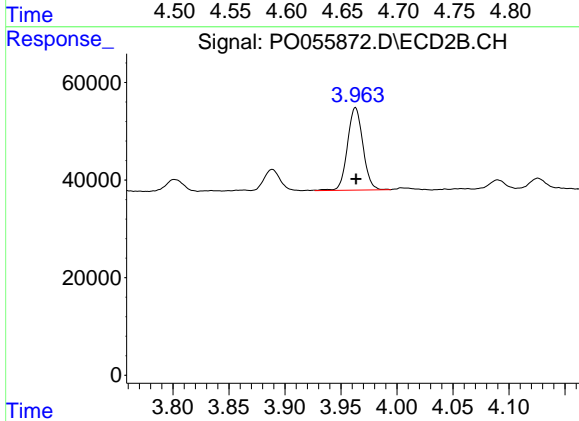


#10 AR-1221-3
 R.T.: 3.963 min
 Delta R.T.: 0.000 min
 Response: 163135
 Conc: 183.61 ng/ml

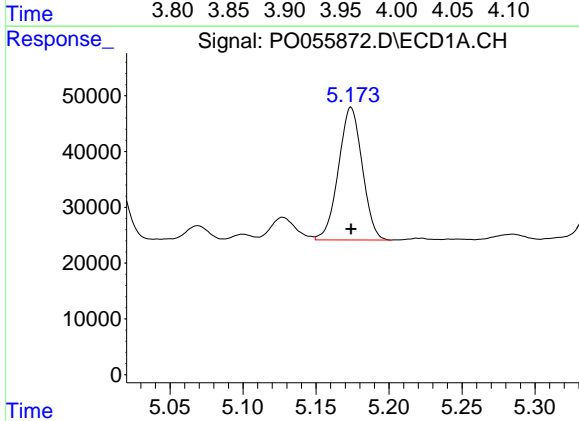


#11 AR-1232-1
 R.T.: 4.650 min
 Delta R.T.: 0.000 min
 Response: 191867
 Conc: 223.39 ng/ml

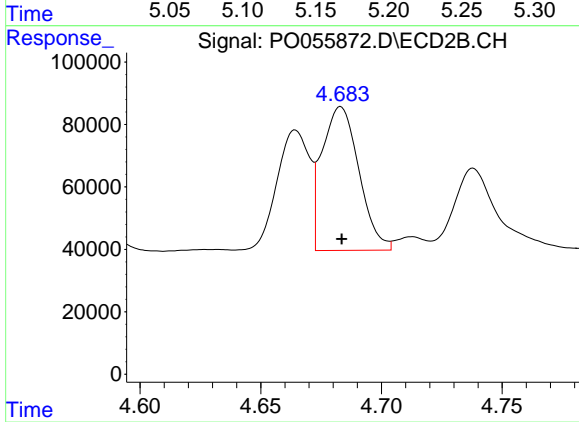
Instrument :
 ECD_O
 ClientSampleId :



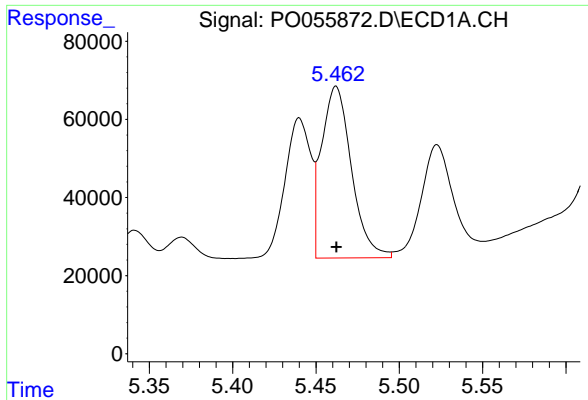
#11 AR-1232-1
 R.T.: 3.963 min
 Delta R.T.: 0.000 min
 Response: 163135
 Conc: 220.43 ng/ml



#12 AR-1232-2
 R.T.: 5.174 min
 Delta R.T.: 0.000 min
 Response: 269911
 Conc: 556.38 ng/ml



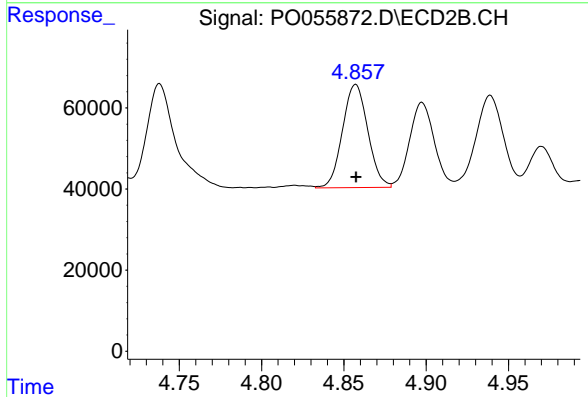
#12 AR-1232-2
 R.T.: 4.683 min
 Delta R.T.: 0.000 min
 Response: 490612
 Conc: 559.77 ng/ml



#13 AR-1232-3

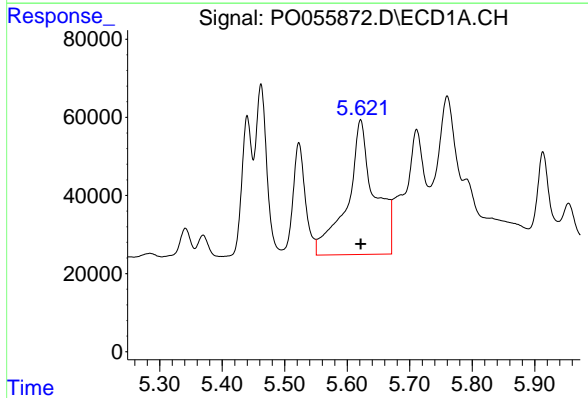
R.T.: 5.462 min
 Delta R.T.: 0.000 min
 Response: 549230
 Conc: 567.69 ng/ml

Instrument :
 ECD_O
 ClientSampled :



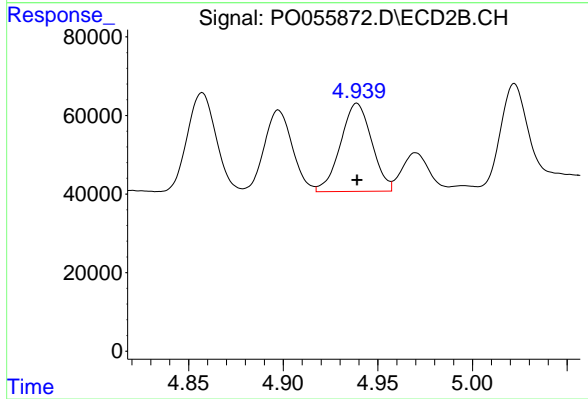
#13 AR-1232-3

R.T.: 4.857 min
 Delta R.T.: 0.000 min
 Response: 272486
 Conc: 568.07 ng/ml



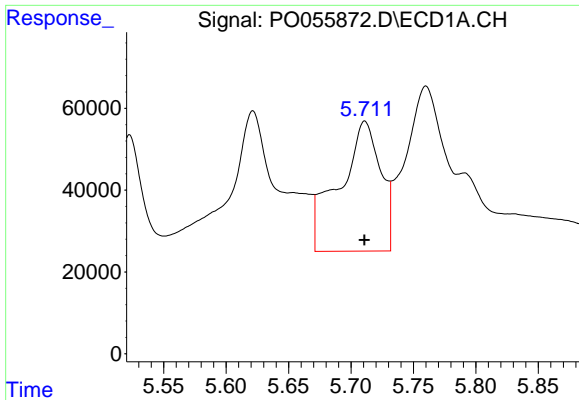
#14 AR-1232-4

R.T.: 5.621 min
 Delta R.T.: 0.000 min
 Response: 1047803
 Conc: 2060.42 ng/ml



#14 AR-1232-4

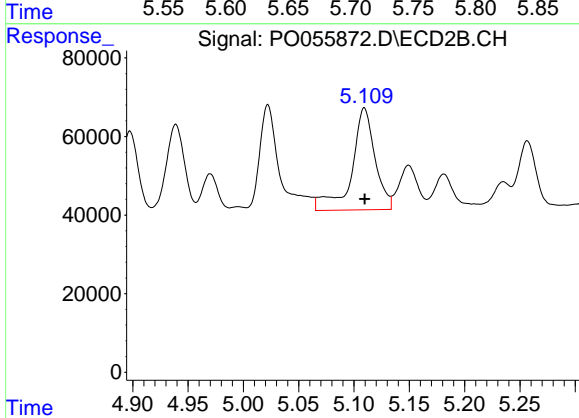
R.T.: 4.939 min
 Delta R.T.: 0.000 min
 Response: 257639
 Conc: 606.55 ng/ml



#15 AR-1232-5

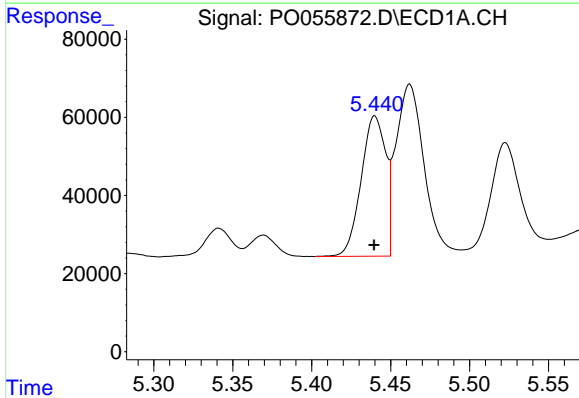
R.T.: 5.711 min
 Delta R.T.: 0.000 min
 Response: 732236
 Conc: 1686.50 ng/ml

Instrument :
 ECD_O
 ClientSampleId :



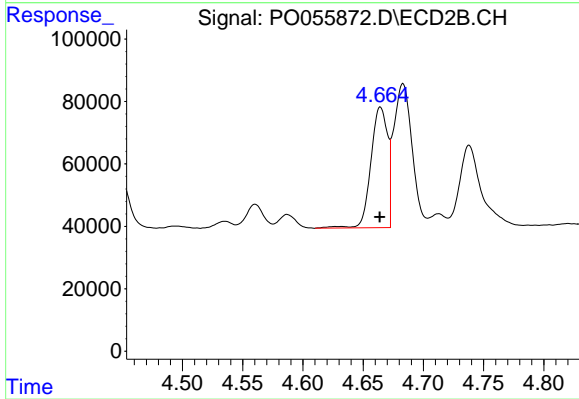
#15 AR-1232-5

R.T.: 5.109 min
 Delta R.T.: 0.000 min
 Response: 381514
 Conc: 787.26 ng/ml



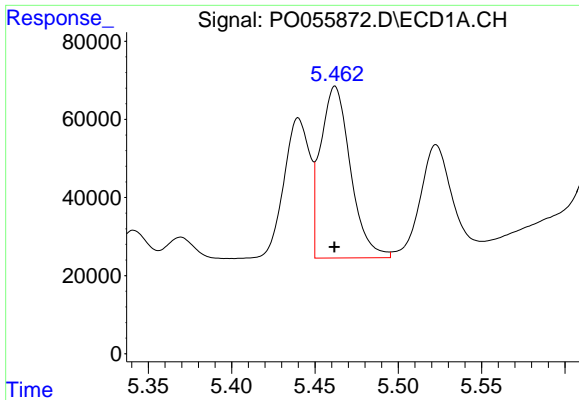
#16 AR-1242-1

R.T.: 5.440 min
 Delta R.T.: 0.000 min
 Response: 387817
 Conc: 320.30 ng/ml



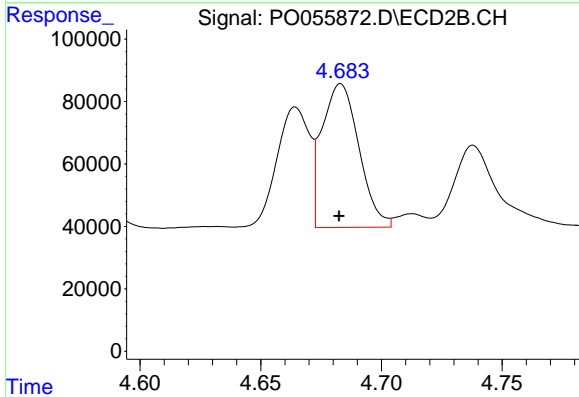
#16 AR-1242-1

R.T.: 4.664 min
 Delta R.T.: 0.000 min
 Response: 371255
 Conc: 331.29 ng/ml

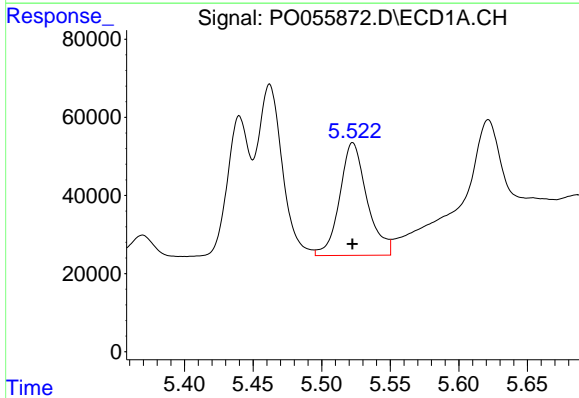


#17 AR-1242-2
 R.T.: 5.462 min
 Delta R.T.: 0.000 min
 Response: 549230
 Conc: 325.30 ng/ml

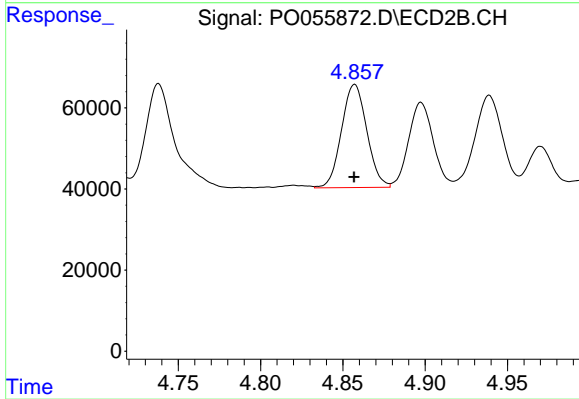
Instrument :
 ECD_O
 ClientSampleId :



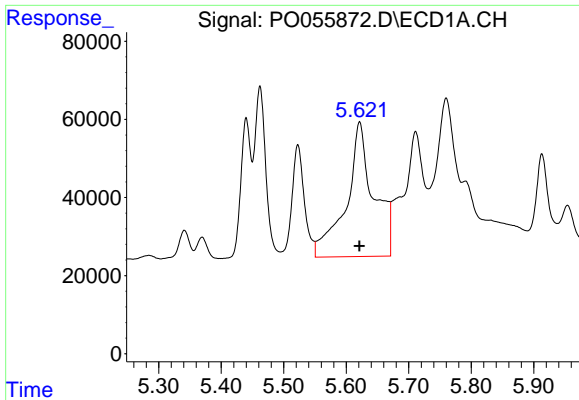
#17 AR-1242-2
 R.T.: 4.683 min
 Delta R.T.: 0.000 min
 Response: 490612
 Conc: 322.46 ng/ml



#18 AR-1242-3
 R.T.: 5.523 min
 Delta R.T.: 0.000 min
 Response: 401116
 Conc: 366.13 ng/ml

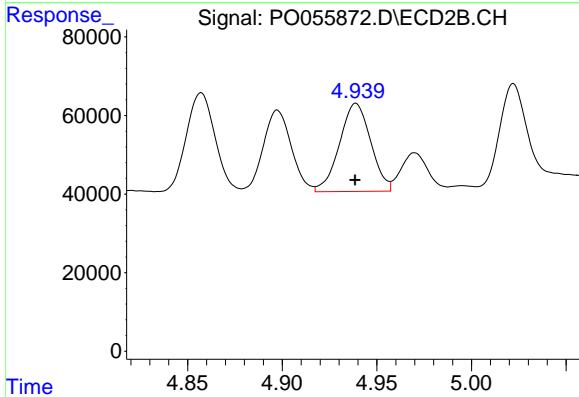


#18 AR-1242-3
 R.T.: 4.857 min
 Delta R.T.: 0.000 min
 Response: 272486
 Conc: 314.64 ng/ml

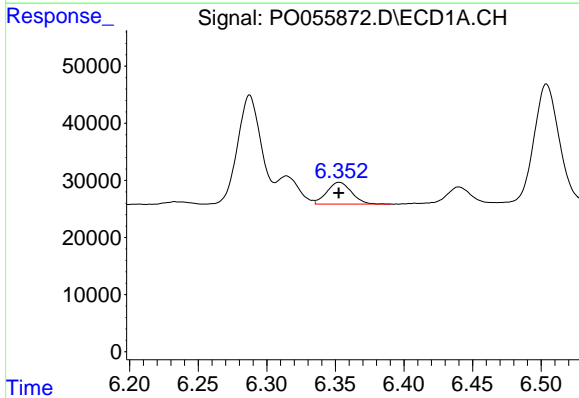


#19 AR-1242-4
 R.T.: 5.621 min
 Delta R.T.: 0.000 min
 Response: 1047803
 Conc: 1164.46 ng/ml

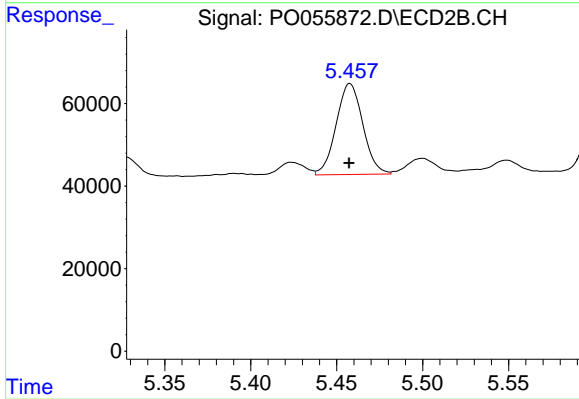
Instrument :
 ECD_O
 ClientSampleId :



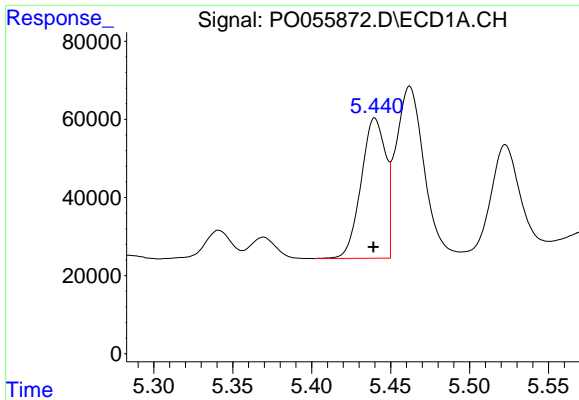
#19 AR-1242-4
 R.T.: 4.939 min
 Delta R.T.: 0.000 min
 Response: 257639
 Conc: 307.55 ng/ml



#20 AR-1242-5
 R.T.: 6.353 min
 Delta R.T.: 0.000 min
 Response: 47678
 Conc: 43.58 ng/ml

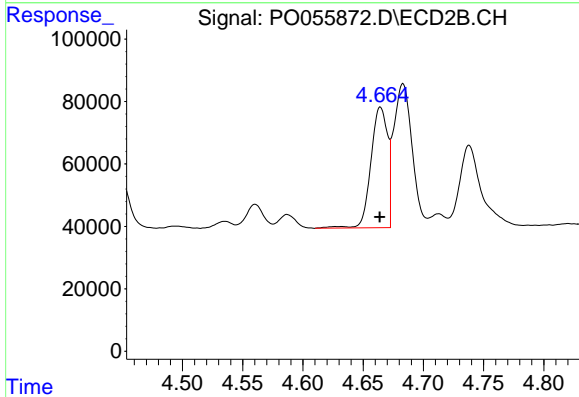


#20 AR-1242-5
 R.T.: 5.458 min
 Delta R.T.: 0.000 min
 Response: 237998
 Conc: 198.27 ng/ml

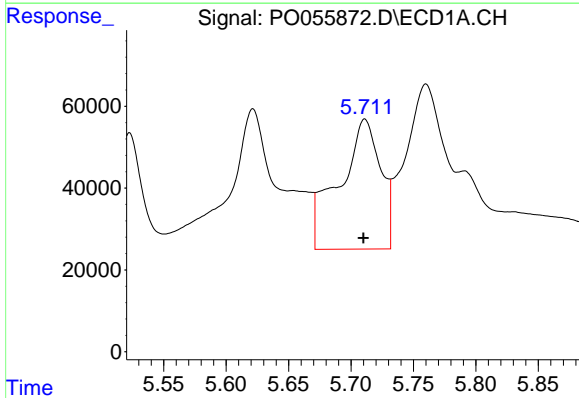


#21 AR-1248-1
 R.T.: 5.440 min
 Delta R.T.: 0.000 min
 Response: 387817
 Conc: 428.47 ng/ml

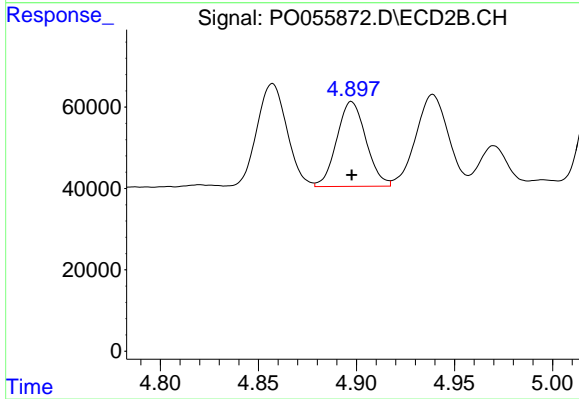
Instrument :
 ECD_O
 ClientSampled :



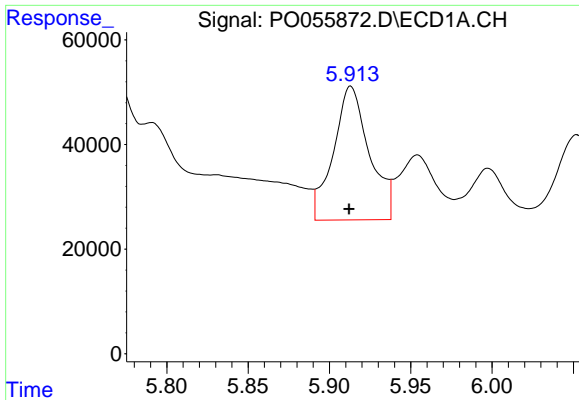
#21 AR-1248-1
 R.T.: 4.664 min
 Delta R.T.: 0.000 min
 Response: 371255
 Conc: 442.75 ng/ml



#22 AR-1248-2
 R.T.: 5.711 min
 Delta R.T.: 0.001 min
 Response: 732236
 Conc: 549.06 ng/ml



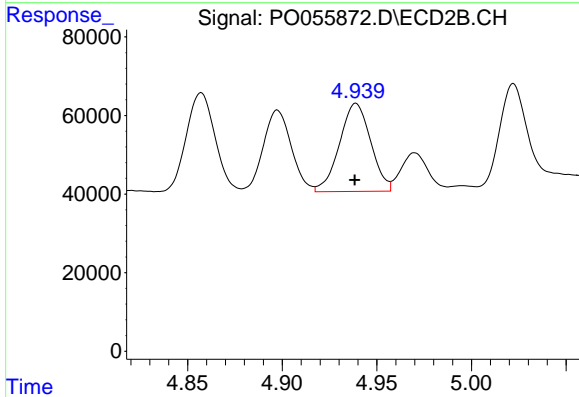
#22 AR-1248-2
 R.T.: 4.898 min
 Delta R.T.: 0.000 min
 Response: 216507
 Conc: 197.05 ng/ml



#23 AR-1248-3

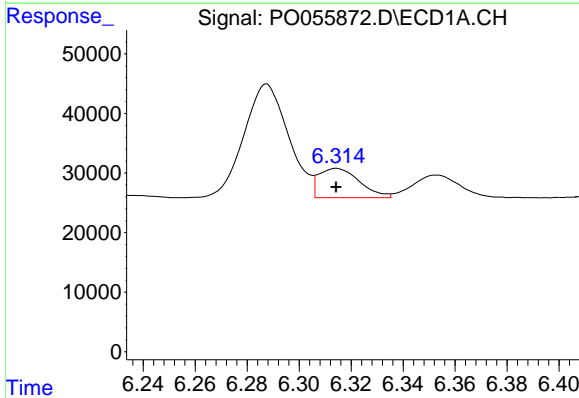
R.T.: 5.913 min
 Delta R.T.: 0.000 min
 Response: 393274
 Conc: 266.31 ng/ml

Instrument :
 ECD_O
 ClientSampleId :



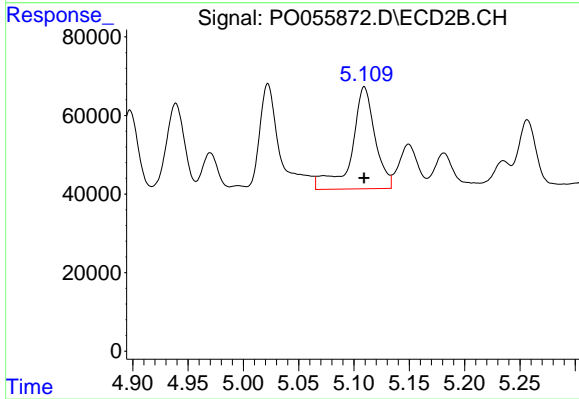
#23 AR-1248-3

R.T.: 4.939 min
 Delta R.T.: 0.000 min
 Response: 257639
 Conc: 226.97 ng/ml



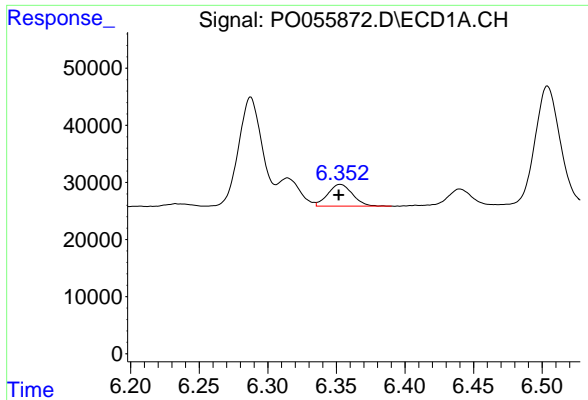
#24 AR-1248-4

R.T.: 6.314 min
 Delta R.T.: 0.000 min
 Response: 53690
 Conc: 30.79 ng/ml



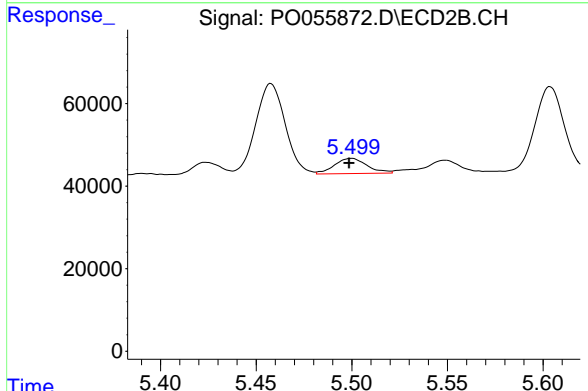
#24 AR-1248-4

R.T.: 5.109 min
 Delta R.T.: 0.000 min
 Response: 381514
 Conc: 271.70 ng/ml

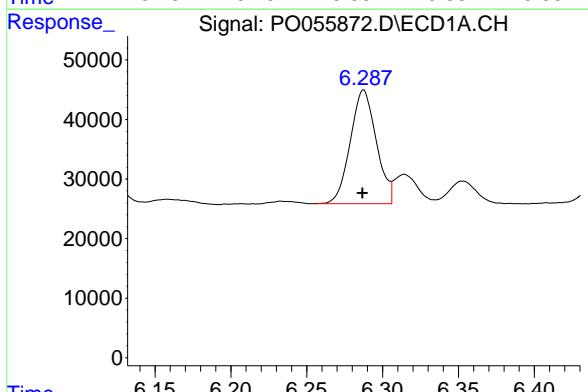


#25 AR-1248-5
 R.T.: 6.353 min
 Delta R.T.: 0.001 min
 Response: 47678
 Conc: 28.54 ng/ml

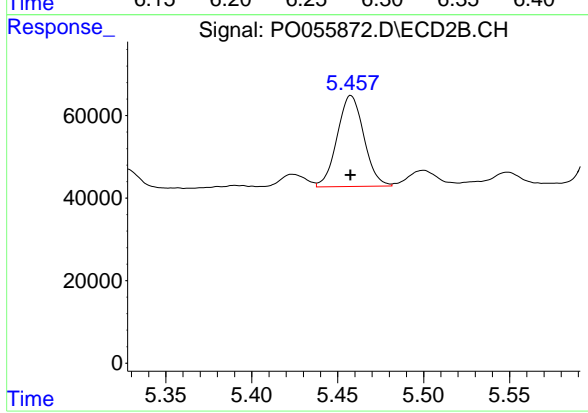
Instrument :
 ECD_O
 ClientSampled :



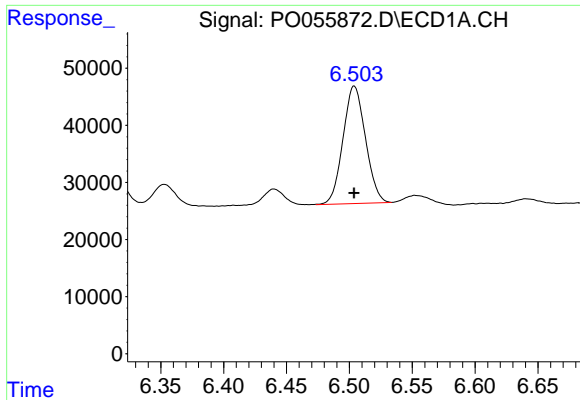
#25 AR-1248-5
 R.T.: 5.500 min
 Delta R.T.: 0.001 min
 Response: 43788
 Conc: 29.24 ng/ml



#26 AR-1254-1
 R.T.: 6.287 min
 Delta R.T.: 0.000 min
 Response: 227811
 Conc: 108.49 ng/ml



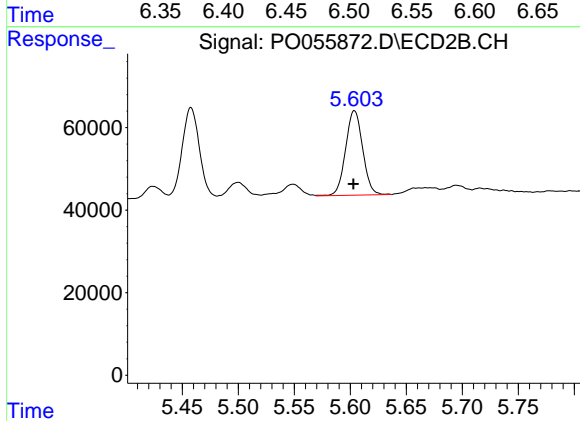
#26 AR-1254-1
 R.T.: 5.458 min
 Delta R.T.: 0.000 min
 Response: 237998
 Conc: 88.93 ng/ml



#27 AR-1254-2

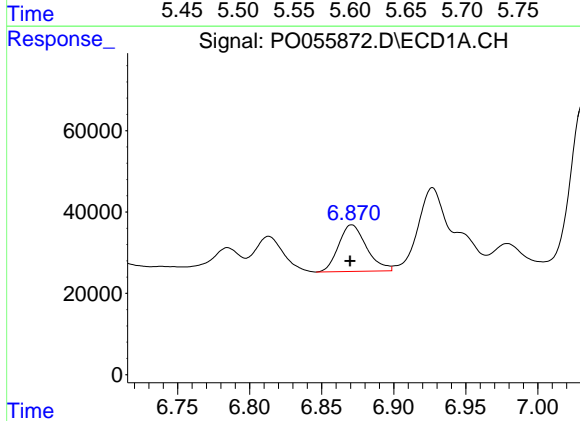
R.T.: 6.504 min
 Delta R.T.: 0.000 min
 Response: 255855
 Conc: 77.09 ng/ml

Instrument :
 ECD_O
 ClientSampled :



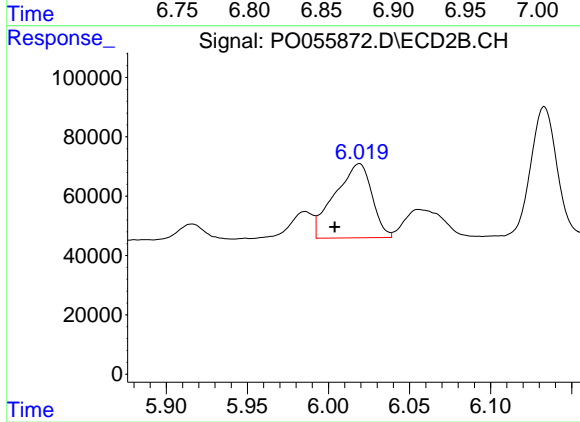
#27 AR-1254-2

R.T.: 5.604 min
 Delta R.T.: 0.000 min
 Response: 217633
 Conc: 89.10 ng/ml



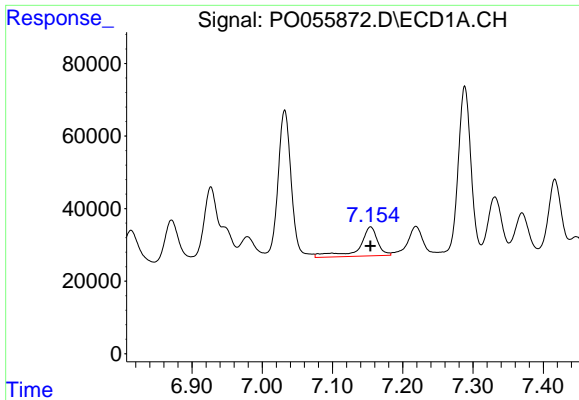
#28 AR-1254-3

R.T.: 6.871 min
 Delta R.T.: 0.001 min
 Response: 154740
 Conc: 42.56 ng/ml



#28 AR-1254-3

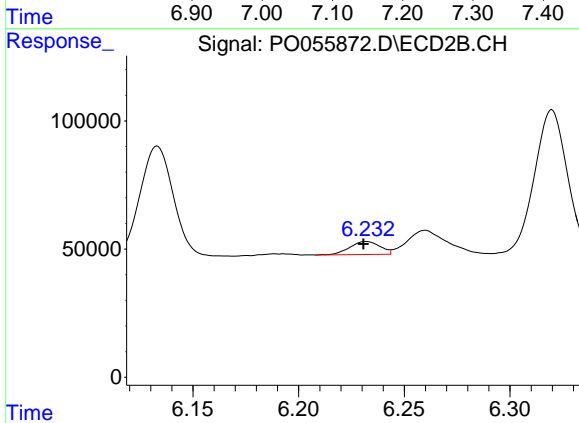
R.T.: 6.019 min
 Delta R.T.: 0.015 min
 Response: 398450
 Conc: 100.43 ng/ml



#29 AR-1254-4

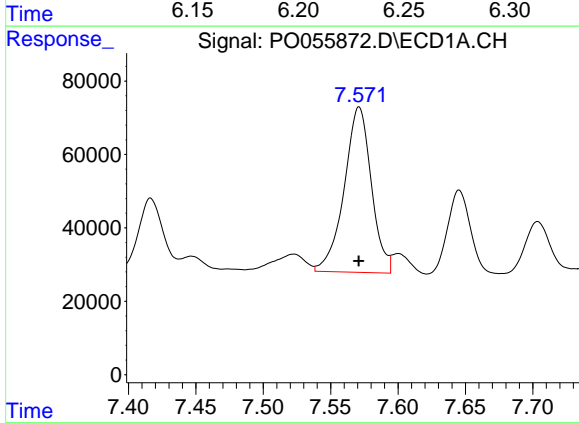
R.T.: 7.154 min
 Delta R.T.: 0.000 min
 Response: 146447
 Conc: 53.83 ng/ml

Instrument :
 ECD_O
 ClientSampled :



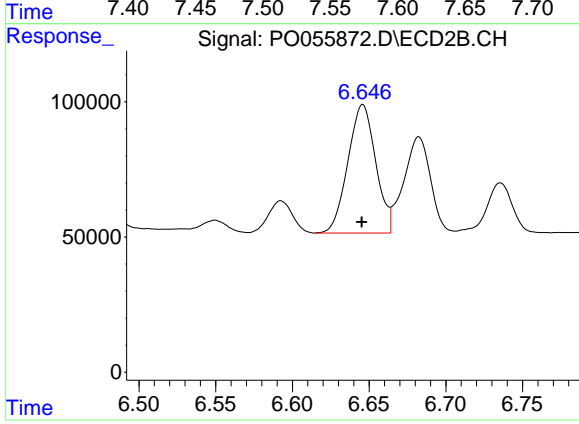
#29 AR-1254-4

R.T.: 6.232 min
 Delta R.T.: 0.001 min
 Response: 50481
 Conc: 18.83 ng/ml



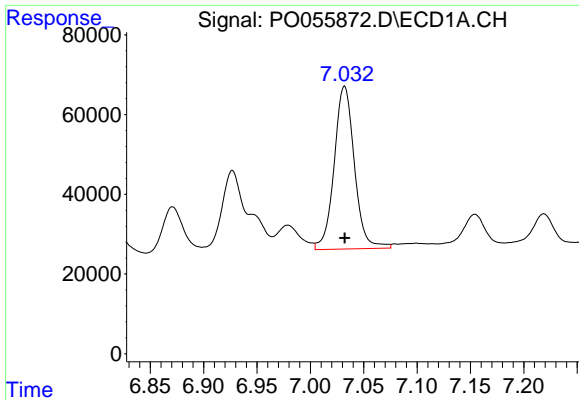
#30 AR-1254-5

R.T.: 7.571 min
 Delta R.T.: 0.000 min
 Response: 632625
 Conc: 220.73 ng/ml



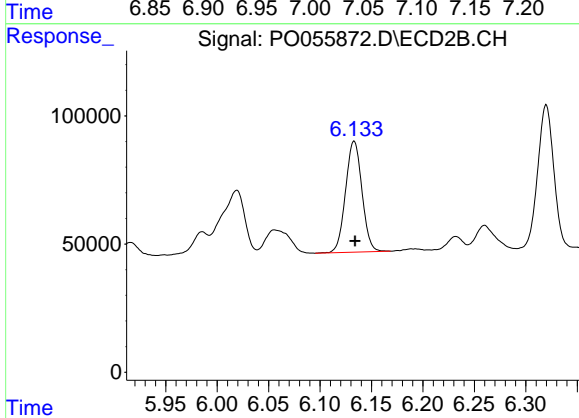
#30 AR-1254-5

R.T.: 6.646 min
 Delta R.T.: 0.000 min
 Response: 601415
 Conc: 166.20 ng/ml

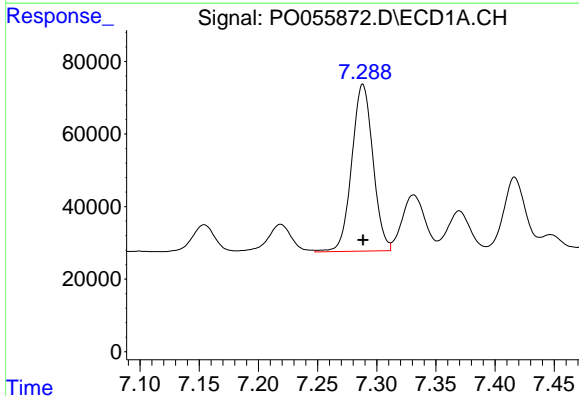


#31 AR-1260-1
 R.T.: 7.032 min
 Delta R.T.: 0.000 min
 Response: 538708
 Conc: 249.46 ng/ml

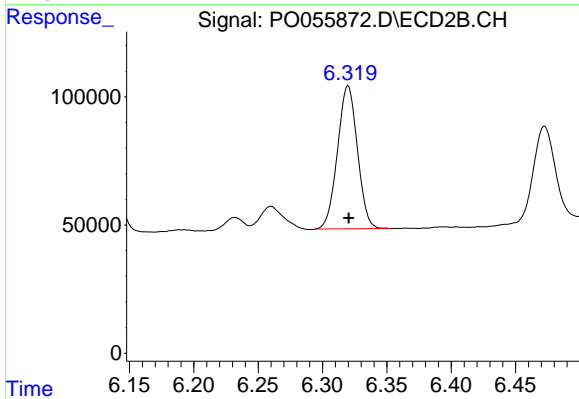
Instrument :
 ECD_O
 ClientSampleId :



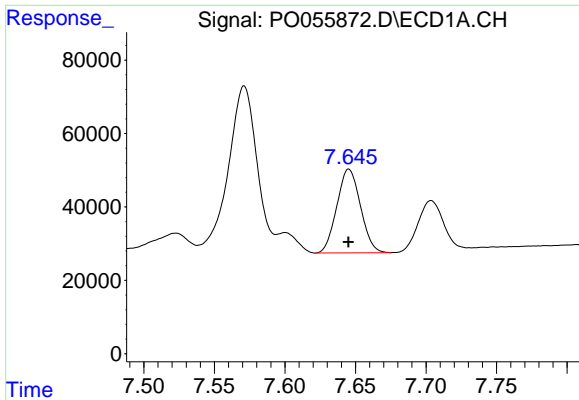
#31 AR-1260-1
 R.T.: 6.133 min
 Delta R.T.: 0.000 min
 Response: 480557
 Conc: 218.12 ng/ml



#32 AR-1260-2
 R.T.: 7.288 min
 Delta R.T.: 0.000 min
 Response: 571869
 Conc: 218.36 ng/ml

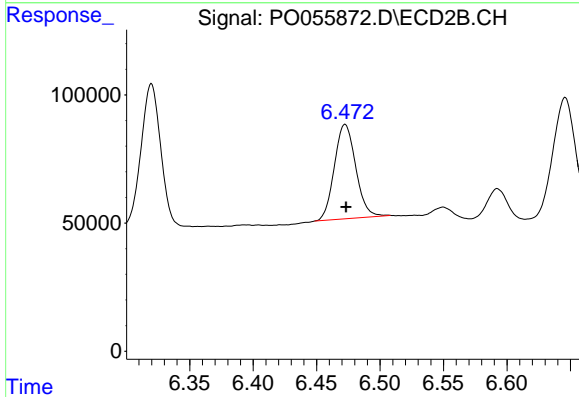


#32 AR-1260-2
 R.T.: 6.320 min
 Delta R.T.: 0.000 min
 Response: 601885
 Conc: 197.11 ng/ml

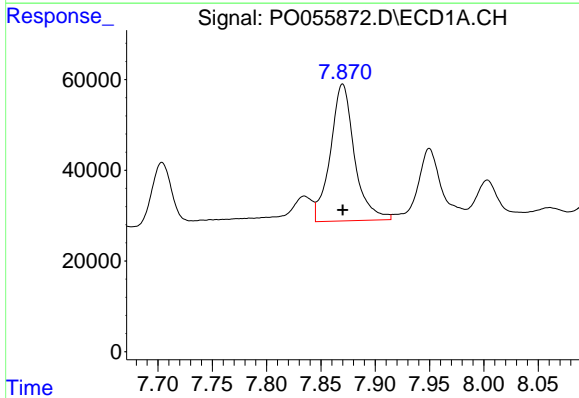


#33 AR-1260-3
R.T.: 7.645 min
Delta R.T.: 0.000 min
Response: 266062
Conc: 133.03 ng/ml

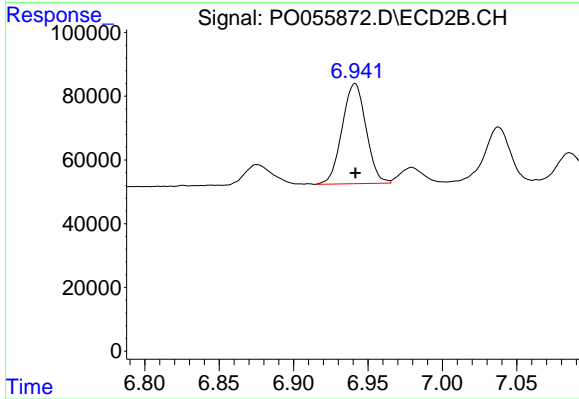
Instrument :
ECD_O
ClientSampleId :



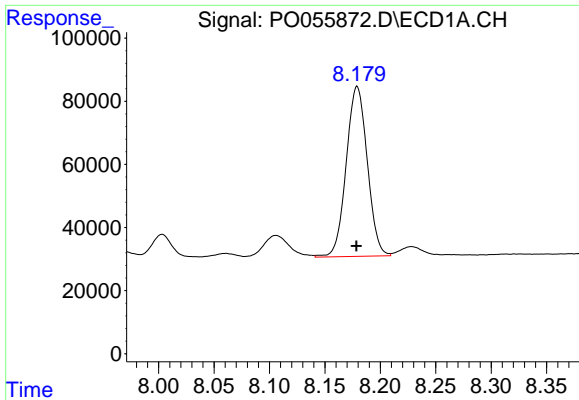
#33 AR-1260-3
R.T.: 6.472 min
Delta R.T.: 0.000 min
Response: 432958
Conc: 173.74 ng/ml



#34 AR-1260-4
R.T.: 7.870 min
Delta R.T.: 0.000 min
Response: 465697
Conc: 201.37 ng/ml



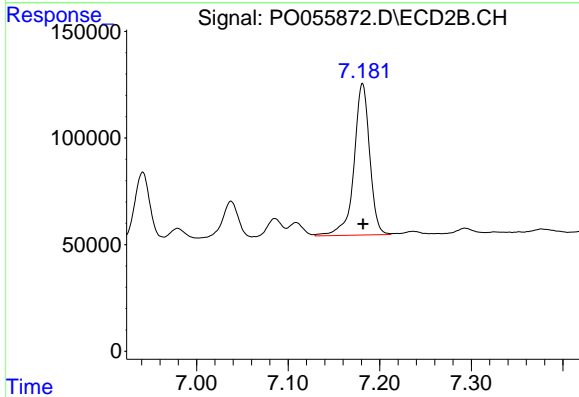
#34 AR-1260-4
R.T.: 6.941 min
Delta R.T.: 0.000 min
Response: 352180
Conc: 170.67 ng/ml



#35 AR-1260-5

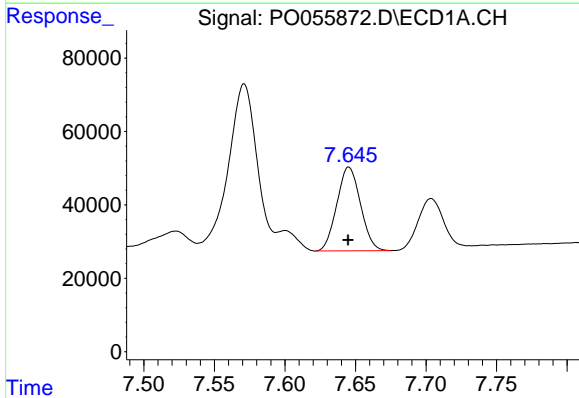
R.T.: 8.179 min
 Delta R.T.: 0.000 min
 Response: 713079
 Conc: 168.09 ng/ml

Instrument :
 ECD_O
 ClientSampled :



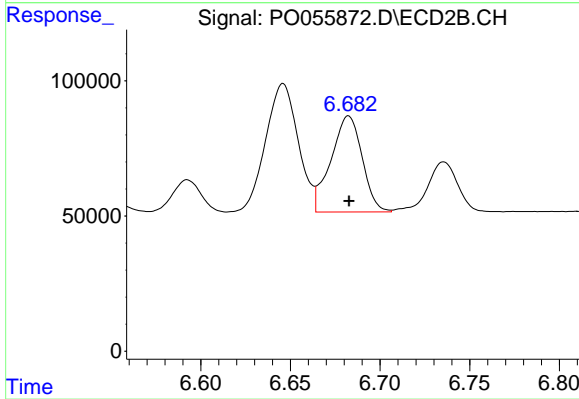
#35 AR-1260-5

R.T.: 7.181 min
 Delta R.T.: 0.000 min
 Response: 842717
 Conc: 167.80 ng/ml



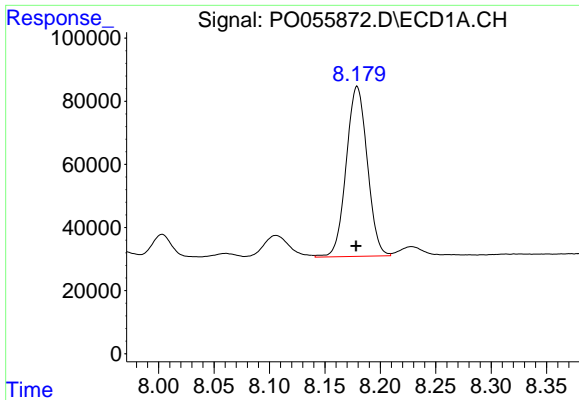
#36 AR-1262-1

R.T.: 7.645 min
 Delta R.T.: 0.000 min
 Response: 266062
 Conc: 82.99 ng/ml



#36 AR-1262-1

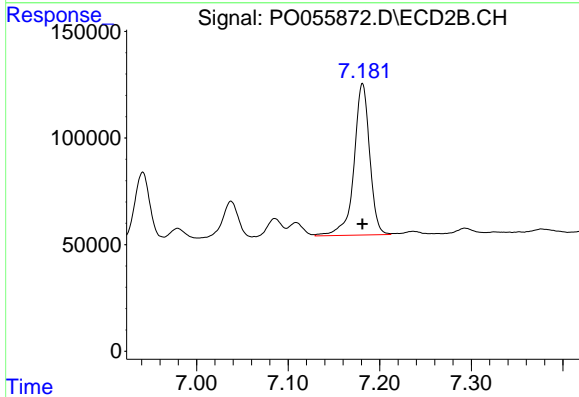
R.T.: 6.682 min
 Delta R.T.: 0.000 min
 Response: 430752
 Conc: 105.04 ng/ml



#37 AR-1262-2

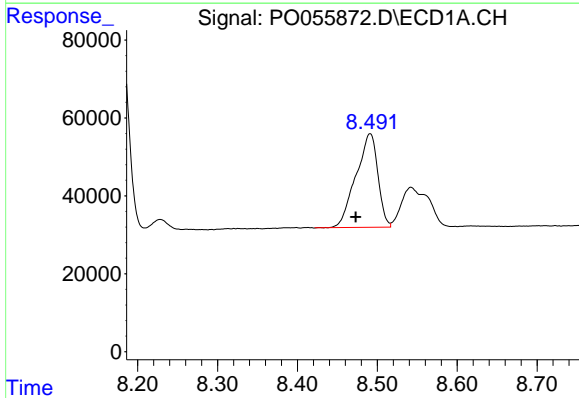
R.T.: 8.179 min
 Delta R.T.: 0.000 min
 Response: 713079
 Conc: 132.82 ng/ml

Instrument :
 ECD_O
 ClientSampleId :



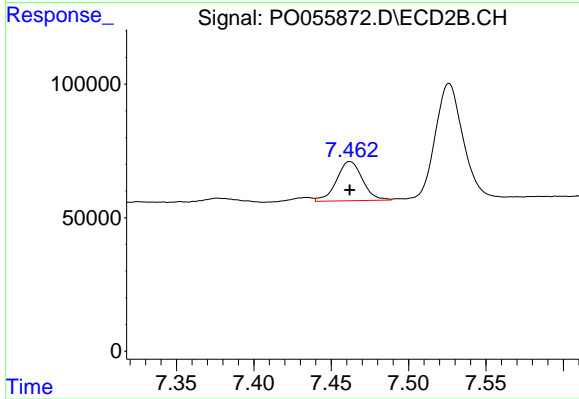
#37 AR-1262-2

R.T.: 7.181 min
 Delta R.T.: 0.000 min
 Response: 842717
 Conc: 134.77 ng/ml



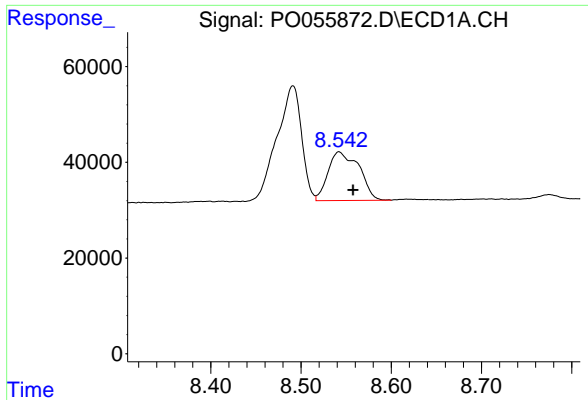
#38 AR-1262-3

R.T.: 8.491 min
 Delta R.T.: 0.018 min
 Response: 457953
 Conc: 126.20 ng/ml



#38 AR-1262-3

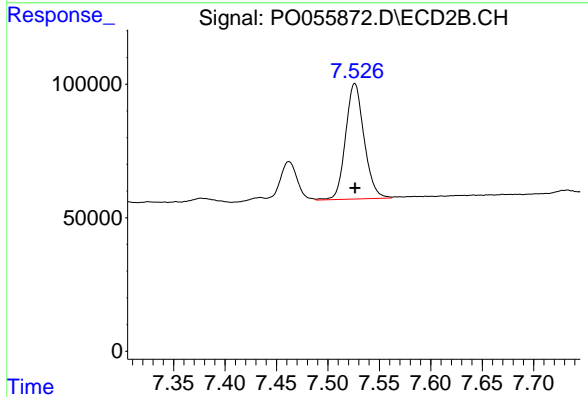
R.T.: 7.462 min
 Delta R.T.: 0.000 min
 Response: 171394
 Conc: 69.59 ng/ml



#39 AR-1262-4

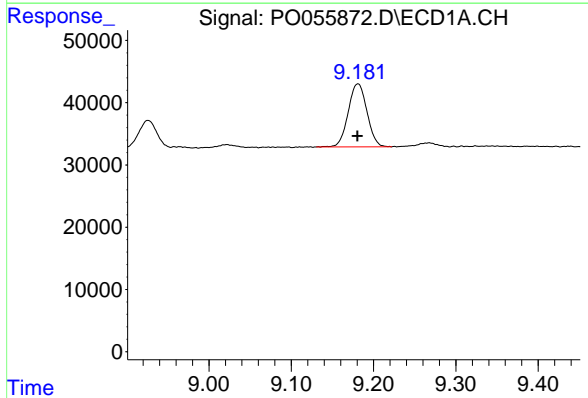
R.T.: 8.542 min
 Delta R.T.: -0.015 min
 Response: 243334
 Conc: 89.62 ng/ml

Instrument :
 ECD_O
 ClientSampleId :



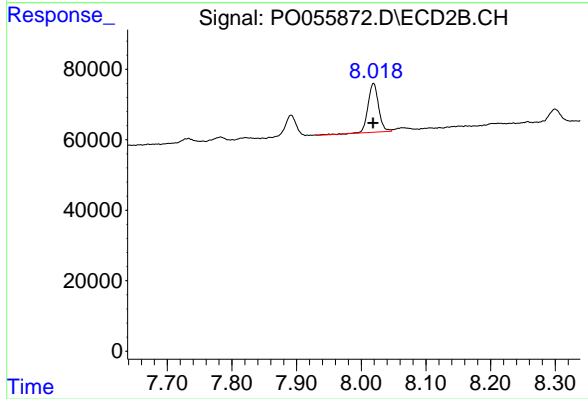
#39 AR-1262-4

R.T.: 7.526 min
 Delta R.T.: 0.000 min
 Response: 541644
 Conc: 132.27 ng/ml



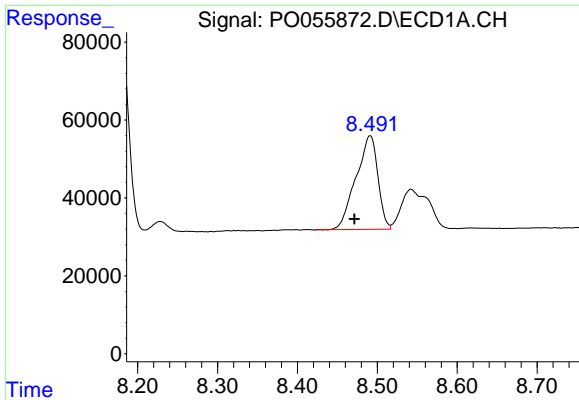
#40 AR-1262-5

R.T.: 9.181 min
 Delta R.T.: 0.000 min
 Response: 160358
 Conc: 88.77 ng/ml



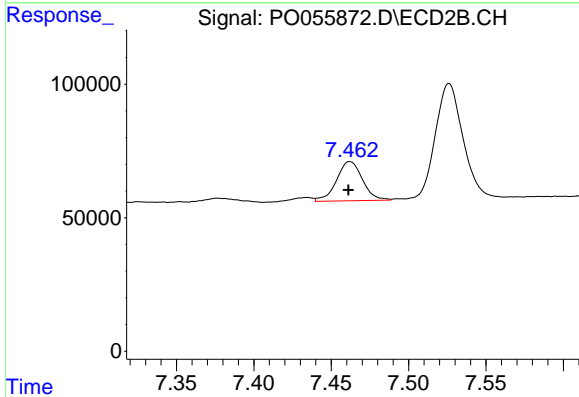
#40 AR-1262-5

R.T.: 8.019 min
 Delta R.T.: 0.001 min
 Response: 158625
 Conc: 93.08 ng/ml

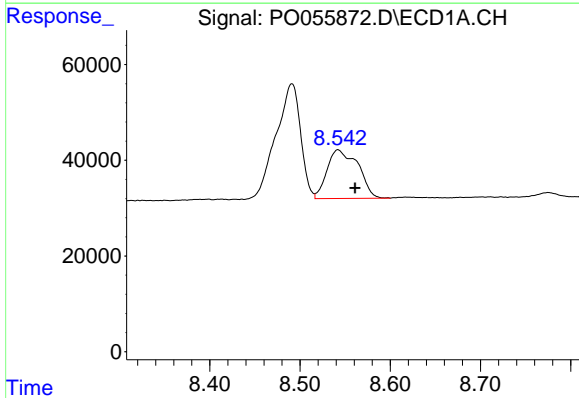


#41 AR-1268-1
 R.T.: 8.491 min
 Delta R.T.: 0.020 min
 Response: 457953
 Conc: 75.83 ng/ml

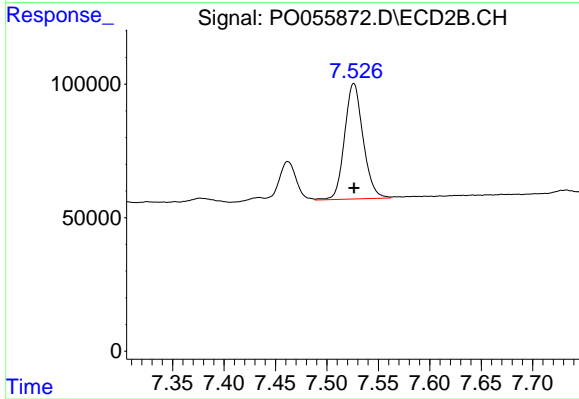
Instrument :
 ECD_O
 ClientSampled :



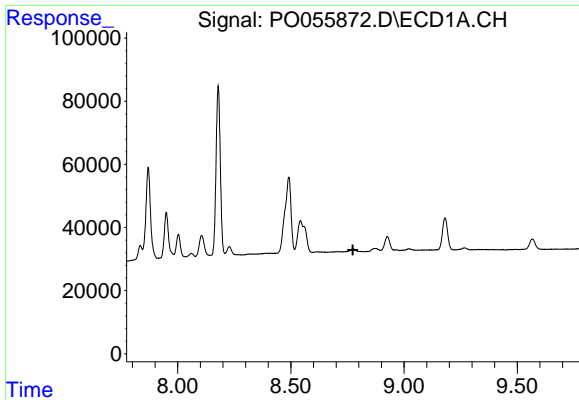
#41 AR-1268-1
 R.T.: 7.462 min
 Delta R.T.: 0.000 min
 Response: 171394
 Conc: 24.74 ng/ml



#42 AR-1268-2
 R.T.: 8.542 min
 Delta R.T.: -0.019 min
 Response: 243334
 Conc: 44.46 ng/ml



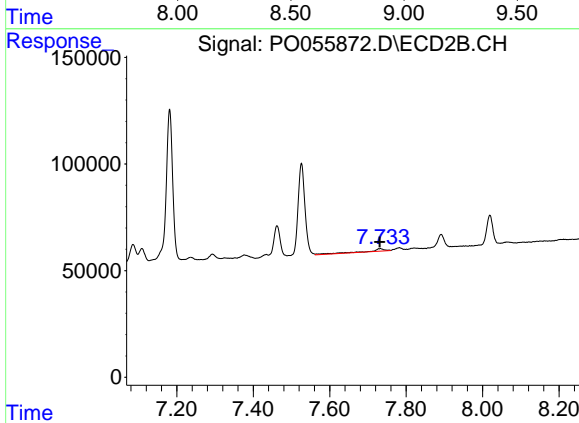
#42 AR-1268-2
 R.T.: 7.526 min
 Delta R.T.: 0.000 min
 Response: 541644
 Conc: 95.21 ng/ml



#43 AR-1268-3

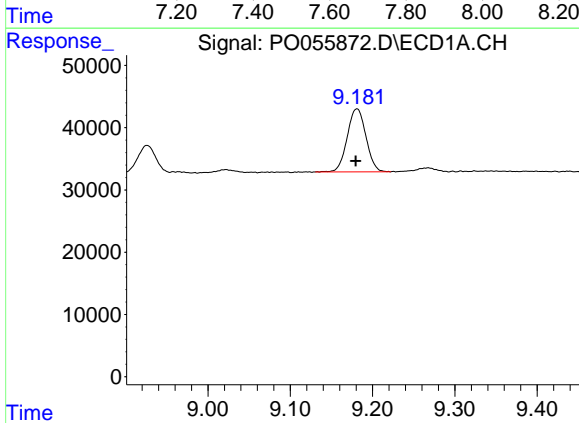
R.T.: 0.000 min
 Exp R.T.: 8.774 min
 Response: 0
 Conc: N.D.

Instrument :
 ECD_O
 ClientSampled :



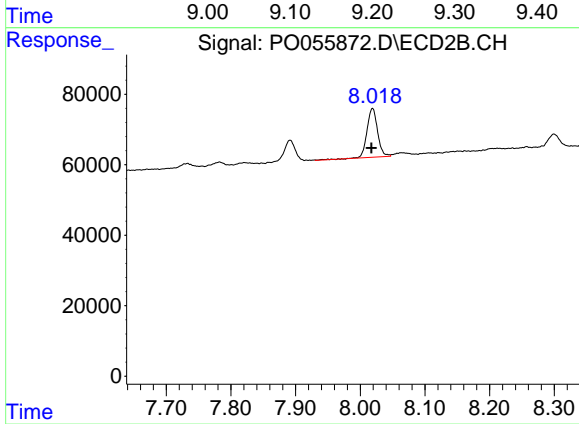
#43 AR-1268-3

R.T.: 7.733 min
 Delta R.T.: 0.002 min
 Response: 32662
 Conc: 6.92 ng/ml



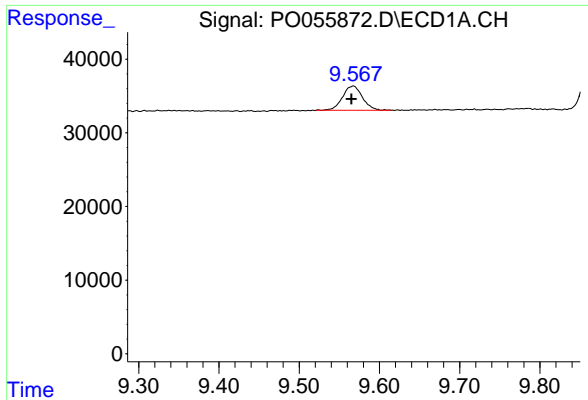
#44 AR-1268-4

R.T.: 9.181 min
 Delta R.T.: 0.002 min
 Response: 160358
 Conc: 81.72 ng/ml



#44 AR-1268-4

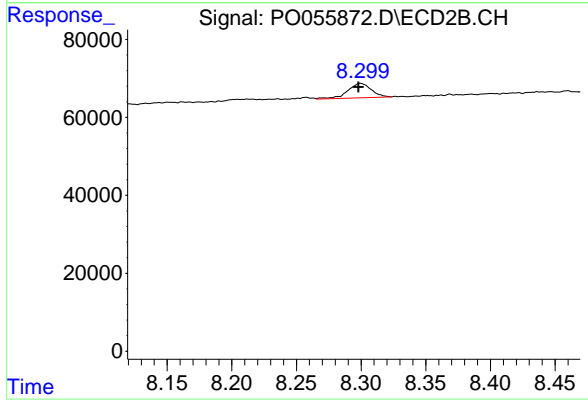
R.T.: 8.019 min
 Delta R.T.: 0.002 min
 Response: 158625
 Conc: 83.85 ng/ml



#45 AR-1268-5

R.T.: 9.568 min
Delta R.T.: 0.003 min
Response: 56841
Conc: 4.21 ng/ml

Instrument :
ECD_O
ClientSampleId :



#45 AR-1268-5

R.T.: 8.300 min
Delta R.T.: 0.002 min
Response: 46946
Conc: 3.85 ng/ml