

Data Path : Z:\pestpcbsrv\HPCHEM1\ECD_0\Data\P0050319\
 Data File : P0055874.D
 Signal(s) : Signal #1: ECD1A.CH Signal #2: ECD2B.CH
 Acq On : 04 May 2019 5:50
 Operator : SM/SJ
 Sample : K2678-01
 Misc :
 ALS Vial : 38 Sample Multiplier: 1

Instrument :
 ECD_0
 ClientSampled :

Integration File signal 1: autoint1.e
 Integration File signal 2: autoint2.e
 Quant Time: May 04 06:59:29 2019
 Quant Method : Z:\pestpcbsrv\HPCHEM1\ECD_0\methods\P0050319.M
 Quant Title : GC EXTRACTABLES
 QLast Update : Fri May 03 15:20:04 2019
 Response via : Initial Calibration
 Integrator: ChemStation 6890 Scale Mode: Small noise peaks clipped

Volume Inj. : 2 µl
 Signal #1 Phase : ZB-MR1 Signal #2 Phase: ZB-MR2
 Signal #1 Info : 30Mx0.32mmx 0.50µ Signal #2 Info : 30M x 0.32mm x 0.25µm

Compound	RT#1	RT#2	Resp#1	Resp#2	ng/ml	ng/ml
System Monitoring Compounds						
1) SA Tetrachlo...	4.278	3.592	974381	970374	32.560	34.358
2) SA Decachlor...	9.878	8.543	766896	538869	20.496	19.926
Target Compounds						
3) L1 AR-1016-1	5.441	4.664	50537	39015	35.561	29.031
4) L1 AR-1016-2	5.462	4.683	49938	53708	25.235	29.414
5) L1 AR-1016-3	5.523	4.860	26095	66443	20.359	66.302 #
6) L1 AR-1016-4	5.642	4.898	198537	343500	189.946	422.180 #
7) L1 AR-1016-5	5.913	5.109	247453	189901	219.662	172.502
8) L2 AR-1221-1	4.542	3.854	16955	23131	39.000	63.003 #
9) L2 AR-1221-2	4.542	3.889	16955	24702	50.562	89.063 #
10) L2 AR-1221-3	4.650	3.962	28381	36104	28.223	40.635 #
11) L3 AR-1232-1	4.650	3.962	28381	36104	33.043	48.784 #
12) L3 AR-1232-2	5.157	4.683	154672	53708	318.835	61.279 #
13) L3 AR-1232-3	5.462	4.860	49938	66443	51.616	138.518 #
14) L3 AR-1232-4	5.642	4.937	198537	102887	390.407	242.221 #
15) L3 AR-1232-5	5.711	5.109	305712	189901	704.123	391.865 #
16) L4 AR-1242-1	5.441	4.664	50537	39015	41.739	34.816
17) L4 AR-1242-2	5.462	4.683	49938	53708	29.577	35.300
18) L4 AR-1242-3	5.523	4.860	26095	66443	23.820	76.722 #
19) L4 AR-1242-4	5.642	4.937	198537	102887	220.641	122.820 #
20) L4 AR-1242-5	6.355	5.458	608082	795894	555.849	663.027
21) L5 AR-1248-1	5.441	4.664	50537	39015	55.835	46.528
22) L5 AR-1248-2	5.711	4.898	305712	343500	229.235	312.624 #
23) L5 AR-1248-3	5.913	4.937	247453	102887	167.568	90.637 #
24) L5 AR-1248-4	6.315	5.109	513719	189901	294.608	135.240 #
25) L5 AR-1248-5	6.355	5.500	608082	253322	364.049	169.139 #
26) L6 AR-1254-1	6.287	5.458	709092	795894	337.690	297.384
27) L6 AR-1254-2	6.506	5.604	1176046	757224	354.356	309.995
28) L6 AR-1254-3	6.870	6.005	1346889	1220159	370.480	307.530
29) L6 AR-1254-4	7.156	6.233	1209177	1066724	444.437	397.857
30) L6 AR-1254-5	7.572	6.646	1118765	1138674	390.341	314.665
31) L7 AR-1260-1	7.032	6.133	677212	551129	313.598	250.151
32) L7 AR-1260-2	7.289	6.320	928502	639329	354.541	209.371 #
33) L7 AR-1260-3	7.641	6.472	133147	355400	66.574	142.615 #
34) L7 AR-1260-4	7.861	6.941	785178	120722	339.521	58.504 #
35) L7 AR-1260-5	8.179	7.181	275080	241016	64.842	47.990 #
36) L8 AR-1262-1	7.641	6.715	133147	47177	41.532	11.504 #
37) L8 AR-1262-2	8.179	7.181	275080	241016	51.238	38.545
38) L8 AR-1262-3	8.491	7.463	245386	65792	67.621	26.713 #
39) L8 AR-1262-4	8.540	7.525	109119	247951	40.190	60.550 #
40) L8 AR-1262-5	9.180	8.019	32991	151907	18.262	89.140 #
41) L9 AR-1268-1	8.491	7.463	245386	65792	40.635	9.496 #

Data Path : Z:\pestpcbsrv\HPCHEM1\ECD_0\Data\P0050319\
 Data File : P0055874.D
 Signal(s) : Signal #1: ECD1A.CH Signal #2: ECD2B.CH
 Acq On : 04 May 2019 5:50
 Operator : SM/SJ
 Sample : K2678-01
 Misc :
 ALS Vial : 38 Sample Multiplier: 1

Instrument :
 ECD_0
 ClientSampleId :

Integration File signal 1: autoint1.e
 Integration File signal 2: autoint2.e
 Quant Time: May 04 06:59:29 2019
 Quant Method : Z:\pestpcbsrv\HPCHEM1\ECD_0\methods\P0050319.M
 Quant Title : GC EXTRACTABLES
 QLast Update : Fri May 03 15:20:04 2019
 Response via : Initial Calibration
 Integrator: ChemStation 6890 Scale Mode: Small noise peaks clipped

Volume Inj. : 2 µl
 Signal #1 Phase : ZB-MR1 Signal #2 Phase: ZB-MR2
 Signal #1 Info : 30Mx0.32mmx 0.50µ Signal #2 Info : 30M x 0.32mm x 0.25µm

	Compound	RT#1	RT#2	Resp#1	Resp#2	ng/ml	ng/ml
42)	L9 AR-1268-2	8.540	7.525	109119	247951	19.935	43.583 #
43)	L9 AR-1268-3	0.000	7.785	0	32110	N.D.	6.798 #
44)	L9 AR-1268-4	9.180	8.019	32991	151907	16.813	80.302 #

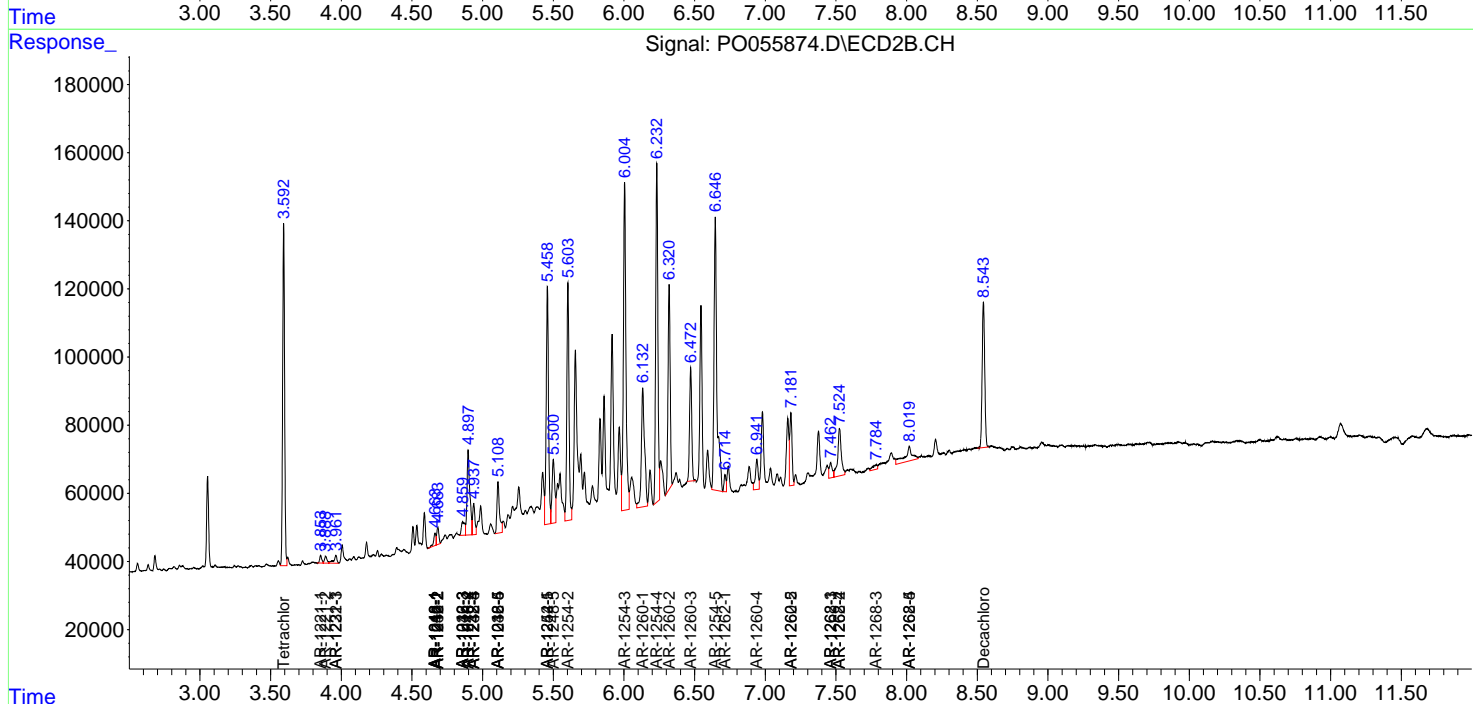
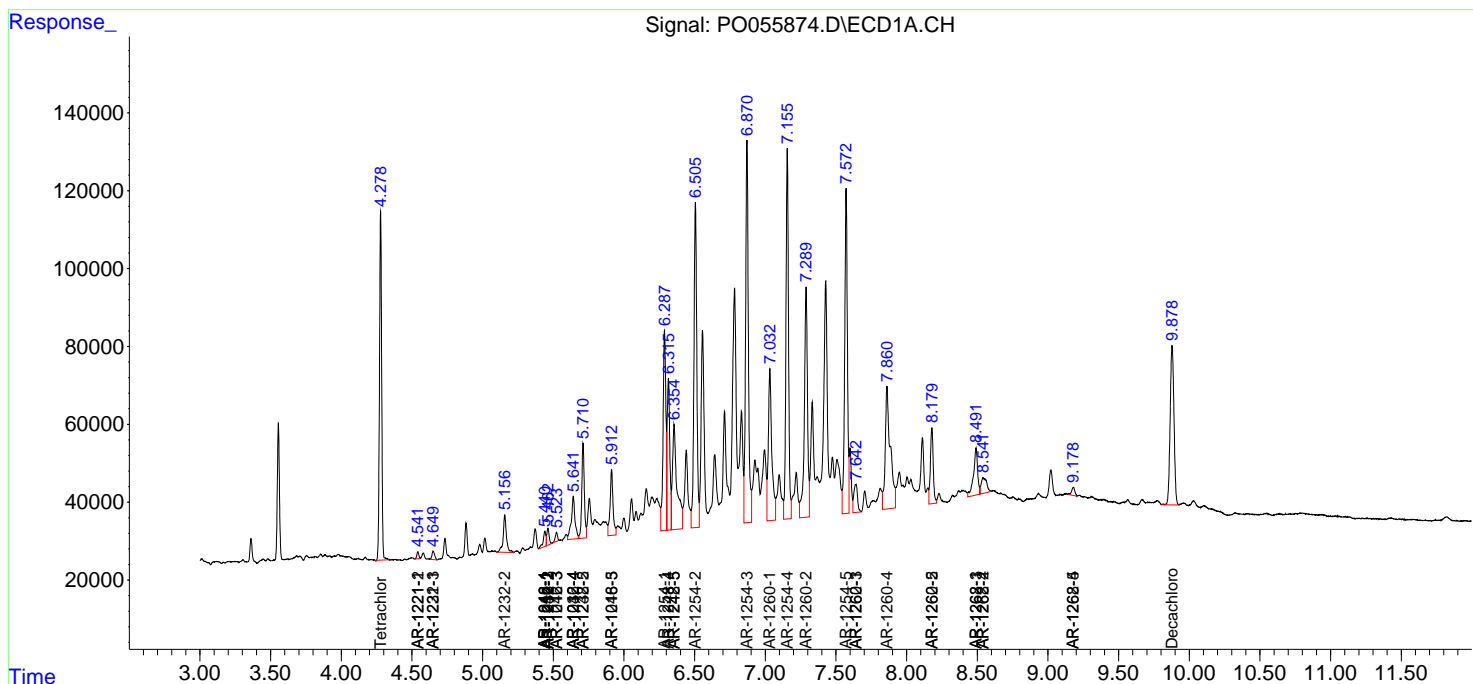
(f)=RT Delta > 1/2 Window (#)=Amounts differ by > 25% (m)=manual int.

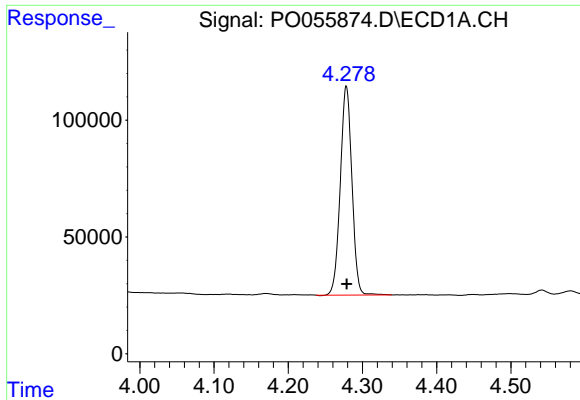
Data Path : Z:\pestpcbsrv\HPCHEM1\ECD_0\Data\P0050319\
 Data File : P0055874.D
 Signal(s) : Signal #1: ECD1A.CH Signal #2: ECD2B.CH
 Acq On : 04 May 2019 5:50
 Operator : SM/SJ
 Sample : K2678-01
 Misc :
 ALS Vial : 38 Sample Multiplier: 1

Instrument :
 ECD_0
 ClientSampled :

Integration File signal 1: autoint1.e
 Integration File signal 2: autoint2.e
 Quant Time: May 04 06:59:29 2019
 Quant Method : Z:\pestpcbsrv\HPCHEM1\ECD_0\methods\P0050319.M
 Quant Title : GC EXTRACTABLES
 QLast Update : Fri May 03 15:20:04 2019
 Response via : Initial Calibration
 Integrator: ChemStation 6890 Scale Mode: Small noise peaks clipped

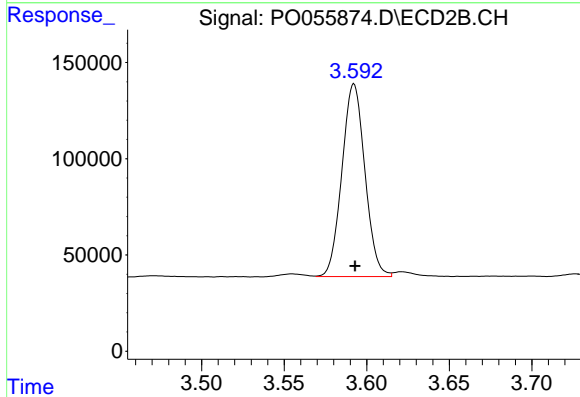
Volume Inj. : 2 µl
 Signal #1 Phase : ZB-MR1 Signal #2 Phase: ZB-MR2
 Signal #1 Info : 30Mx0.32mmx 0.50µ Signal #2 Info : 30M x 0.32mm x 0.25µm



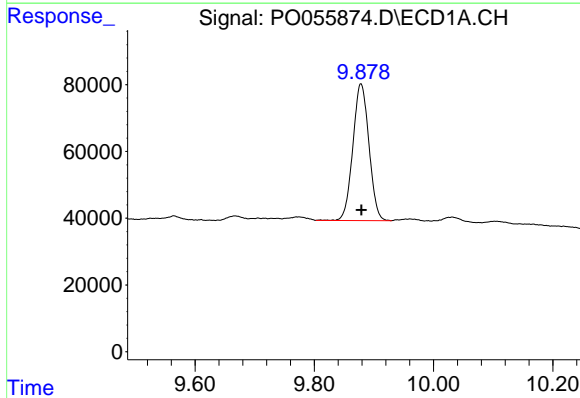


#1 Tetrachloro-m-xylene
 R.T.: 4.278 min
 Delta R.T.: 0.000 min
 Response: 974381
 Conc: 32.56 ng/ml

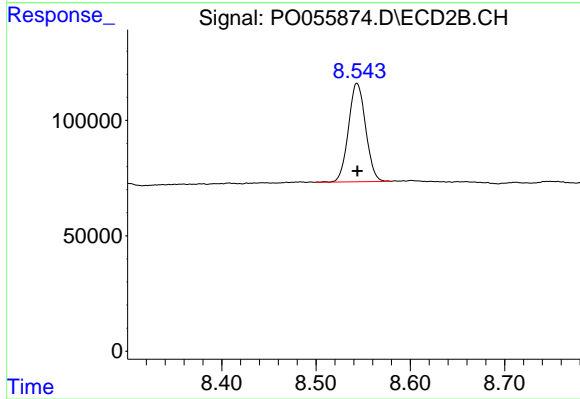
Instrument :
 ECD_O
 ClientSampleId :



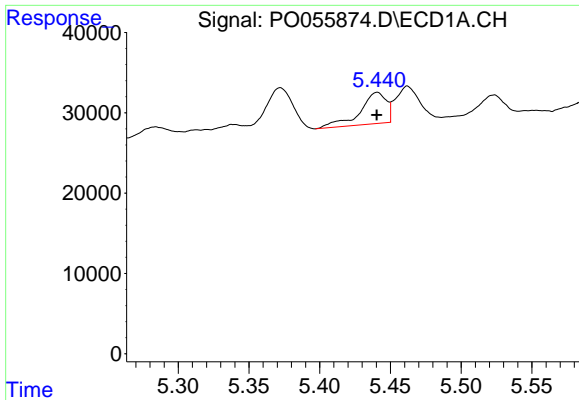
#1 Tetrachloro-m-xylene
 R.T.: 3.592 min
 Delta R.T.: 0.000 min
 Response: 970374
 Conc: 34.36 ng/ml



#2 Decachlorobiphenyl
 R.T.: 9.878 min
 Delta R.T.: 0.000 min
 Response: 766896
 Conc: 20.50 ng/ml

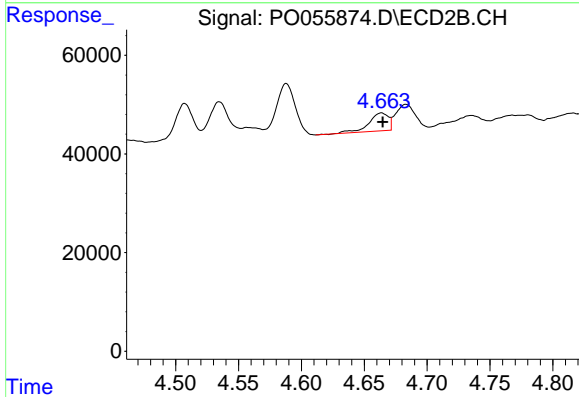


#2 Decachlorobiphenyl
 R.T.: 8.543 min
 Delta R.T.: 0.000 min
 Response: 538869
 Conc: 19.93 ng/ml

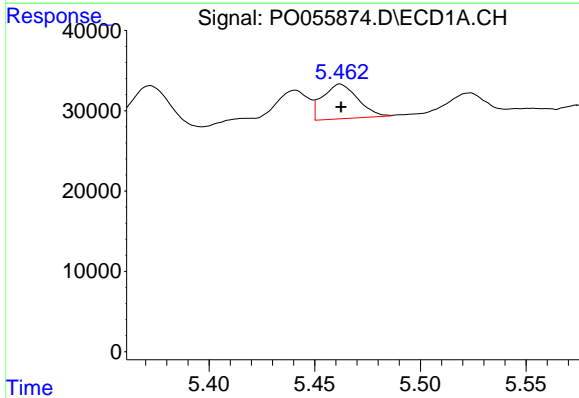


#3 AR-1016-1
 R.T.: 5.441 min
 Delta R.T.: 0.000 min
 Response: 50537
 Conc: 35.56 ng/ml

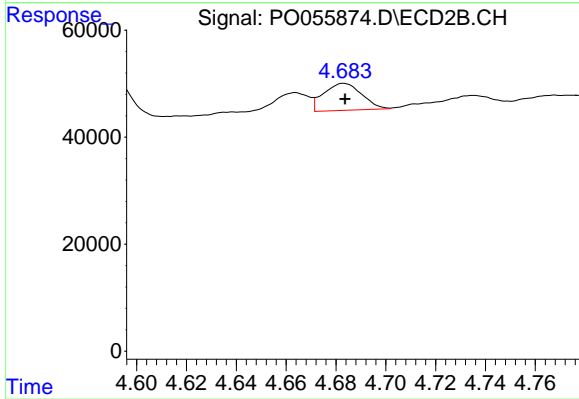
Instrument :
 ECD_O
 ClientSampled :



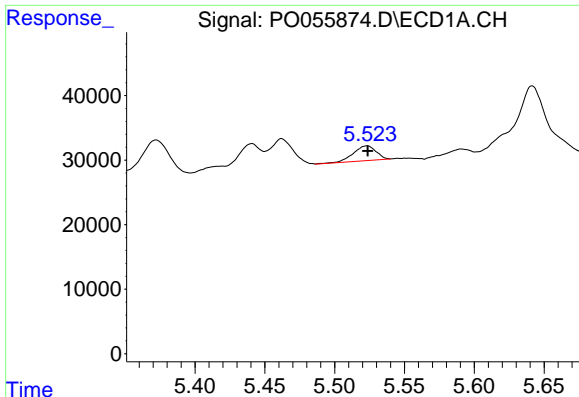
#3 AR-1016-1
 R.T.: 4.664 min
 Delta R.T.: -0.001 min
 Response: 39015
 Conc: 29.03 ng/ml



#4 AR-1016-2
 R.T.: 5.462 min
 Delta R.T.: 0.000 min
 Response: 49938
 Conc: 25.24 ng/ml



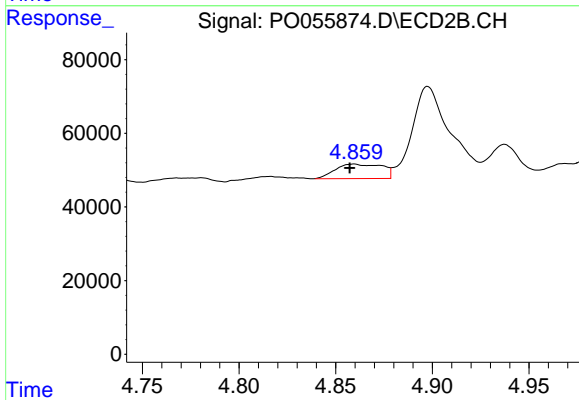
#4 AR-1016-2
 R.T.: 4.683 min
 Delta R.T.: 0.000 min
 Response: 53708
 Conc: 29.41 ng/ml



#5 AR-1016-3

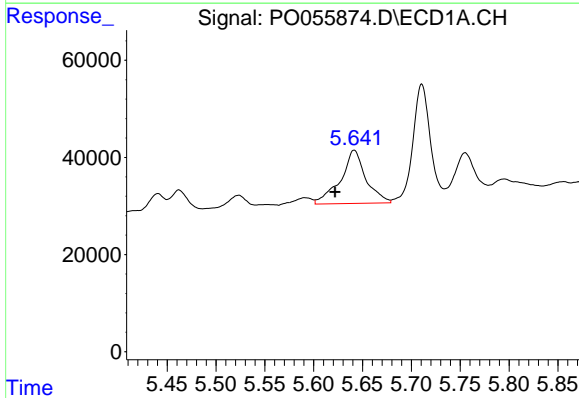
R.T.: 5.523 min
 Delta R.T.: 0.000 min
 Response: 26095
 Conc: 20.36 ng/ml

Instrument :
 ECD_O
 ClientSampled :



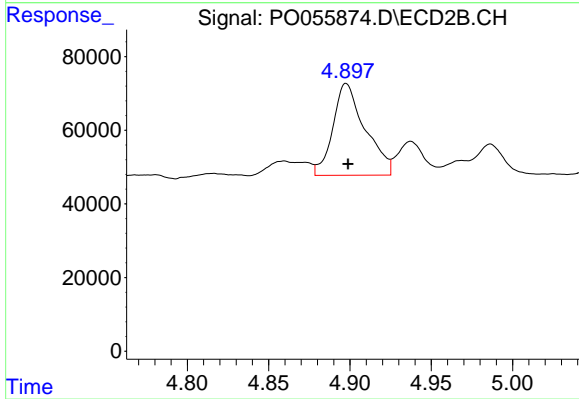
#5 AR-1016-3

R.T.: 4.860 min
 Delta R.T.: 0.002 min
 Response: 66443
 Conc: 66.30 ng/ml



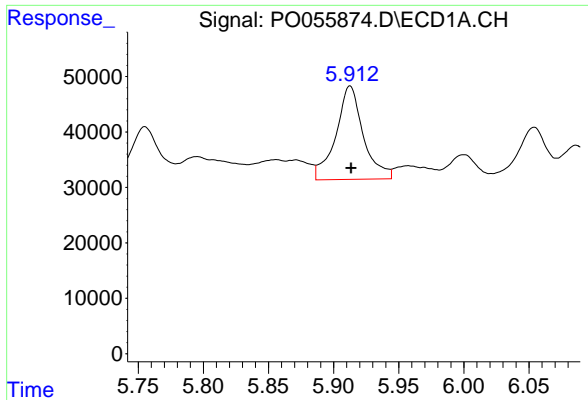
#6 AR-1016-4

R.T.: 5.642 min
 Delta R.T.: 0.020 min
 Response: 198537
 Conc: 189.95 ng/ml



#6 AR-1016-4

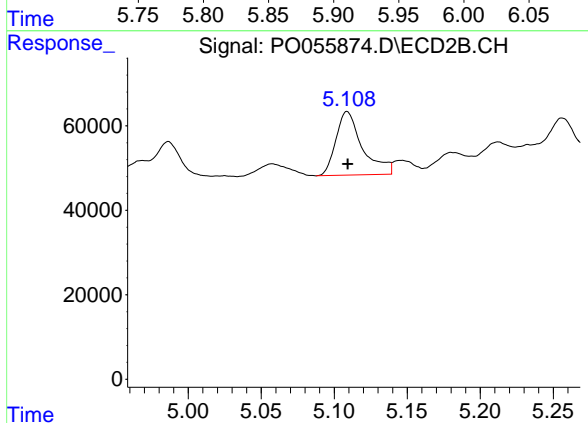
R.T.: 4.898 min
 Delta R.T.: -0.001 min
 Response: 343500
 Conc: 422.18 ng/ml



#7 AR-1016-5

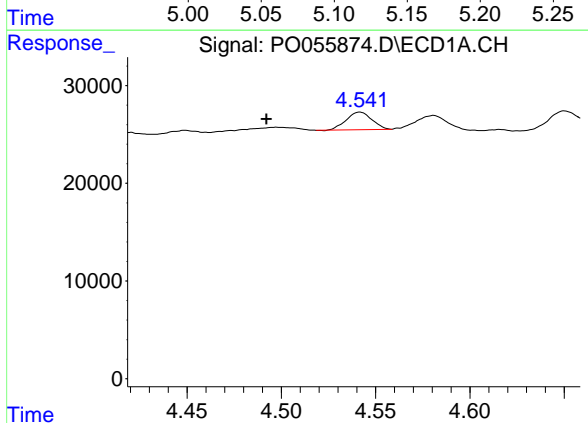
R.T.: 5.913 min
 Delta R.T.: 0.000 min
 Response: 247453
 Conc: 219.66 ng/ml

Instrument :
 ECD_O
 ClientSampleId :



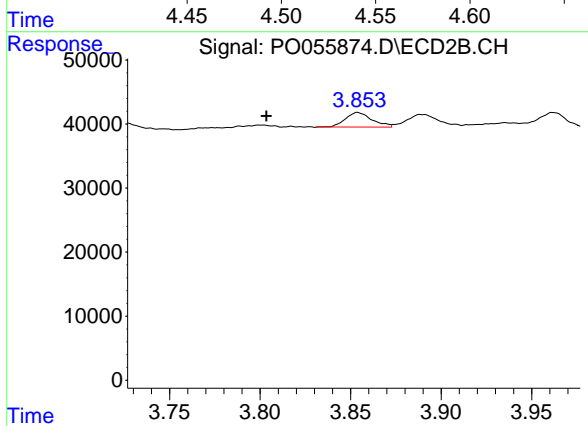
#7 AR-1016-5

R.T.: 5.109 min
 Delta R.T.: 0.000 min
 Response: 189901
 Conc: 172.50 ng/ml



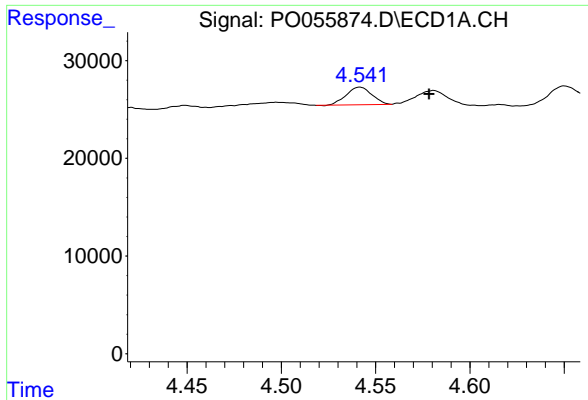
#8 AR-1221-1

R.T.: 4.542 min
 Delta R.T.: 0.050 min
 Response: 16955
 Conc: 39.00 ng/ml



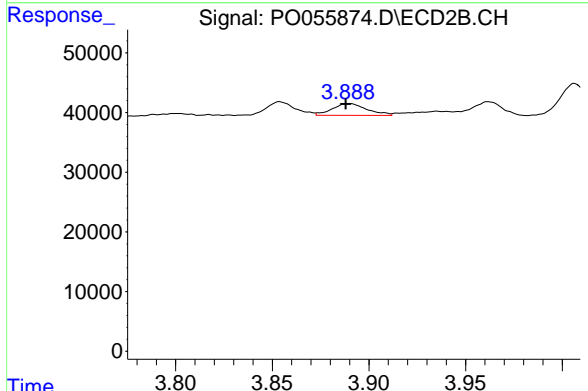
#8 AR-1221-1

R.T.: 3.854 min
 Delta R.T.: 0.050 min
 Response: 23131
 Conc: 63.00 ng/ml

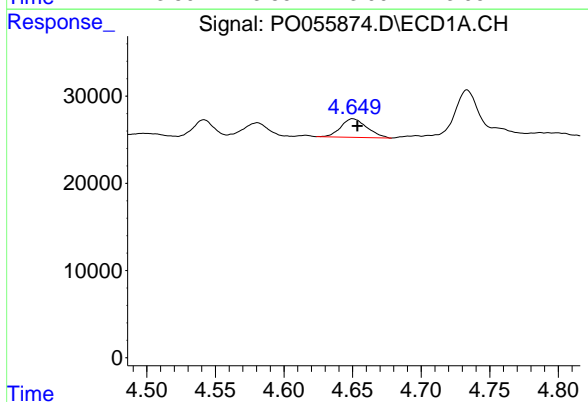


#9 AR-1221-2
 R.T.: 4.542 min
 Delta R.T.: -0.037 min
 Response: 16955
 Conc: 50.56 ng/ml

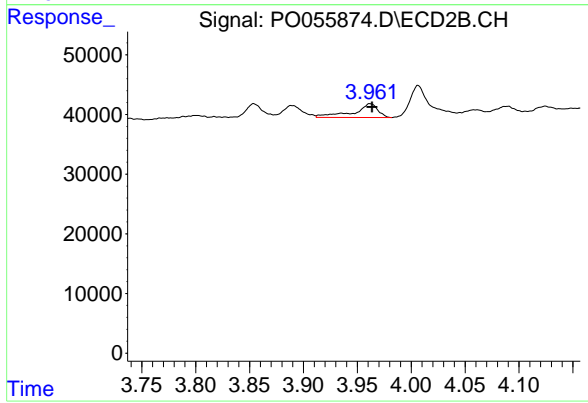
Instrument :
 ECD_O
 ClientSampleId :



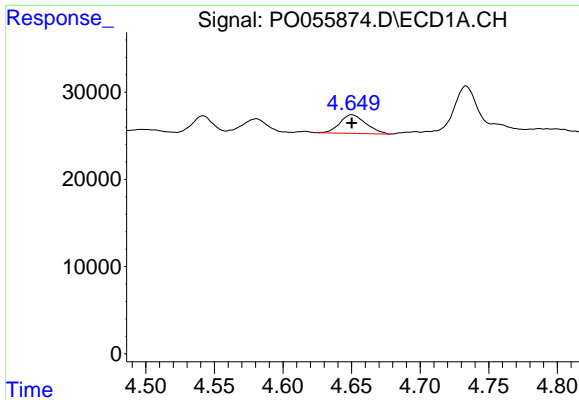
#9 AR-1221-2
 R.T.: 3.889 min
 Delta R.T.: 0.000 min
 Response: 24702
 Conc: 89.06 ng/ml



#10 AR-1221-3
 R.T.: 4.650 min
 Delta R.T.: -0.004 min
 Response: 28381
 Conc: 28.22 ng/ml



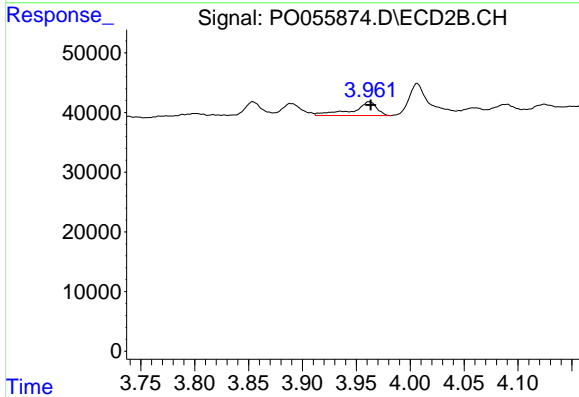
#10 AR-1221-3
 R.T.: 3.962 min
 Delta R.T.: -0.002 min
 Response: 36104
 Conc: 40.63 ng/ml



#11 AR-1232-1

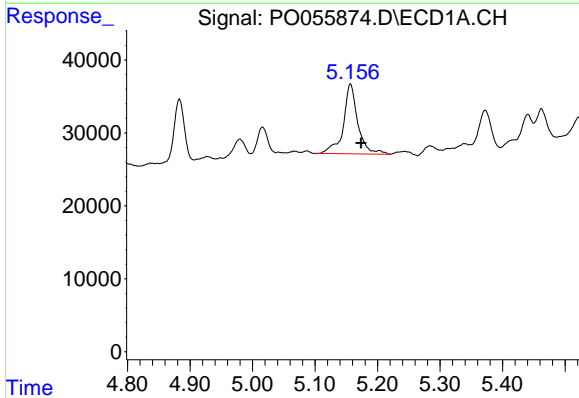
R.T.: 4.650 min
 Delta R.T.: 0.000 min
 Response: 28381
 Conc: 33.04 ng/ml

Instrument :
 ECD_O
 ClientSampleId :



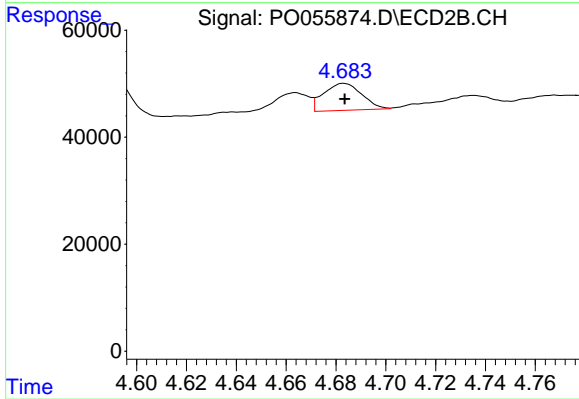
#11 AR-1232-1

R.T.: 3.962 min
 Delta R.T.: -0.002 min
 Response: 36104
 Conc: 48.78 ng/ml



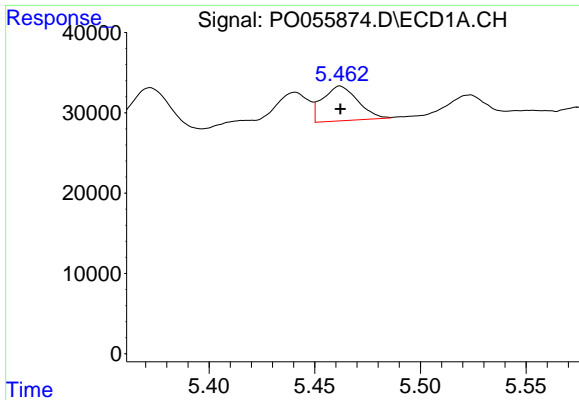
#12 AR-1232-2

R.T.: 5.157 min
 Delta R.T.: -0.017 min
 Response: 154672
 Conc: 318.83 ng/ml



#12 AR-1232-2

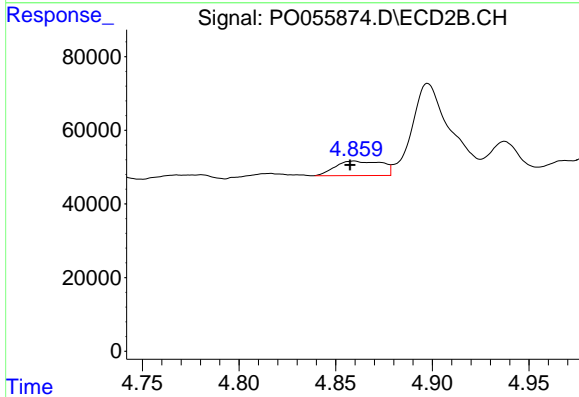
R.T.: 4.683 min
 Delta R.T.: 0.000 min
 Response: 53708
 Conc: 61.28 ng/ml



#13 AR-1232-3

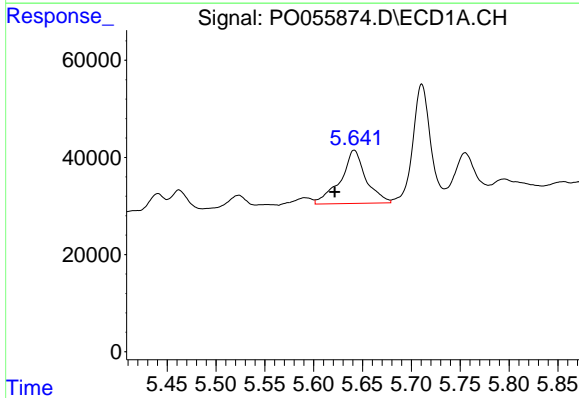
R.T.: 5.462 min
 Delta R.T.: 0.000 min
 Response: 49938
 Conc: 51.62 ng/ml

Instrument :
 ECD_O
 ClientSampleId :



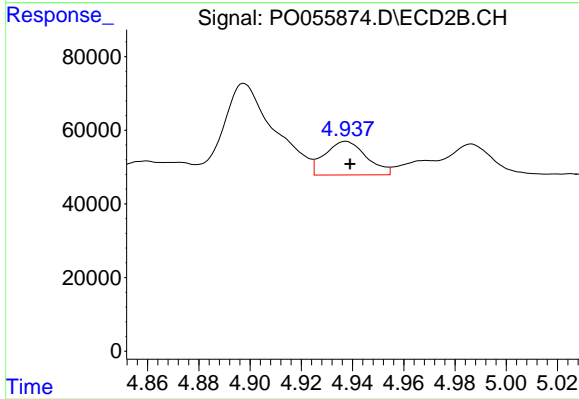
#13 AR-1232-3

R.T.: 4.860 min
 Delta R.T.: 0.002 min
 Response: 66443
 Conc: 138.52 ng/ml



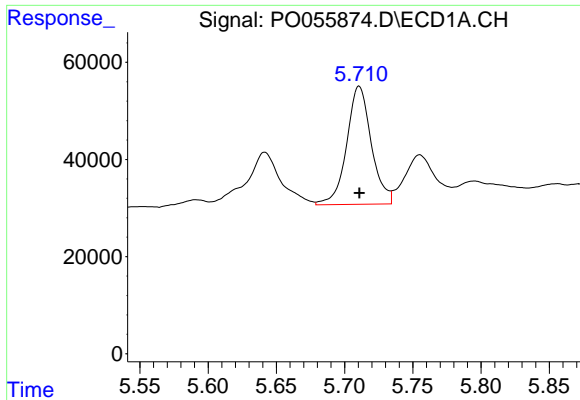
#14 AR-1232-4

R.T.: 5.642 min
 Delta R.T.: 0.020 min
 Response: 198537
 Conc: 390.41 ng/ml



#14 AR-1232-4

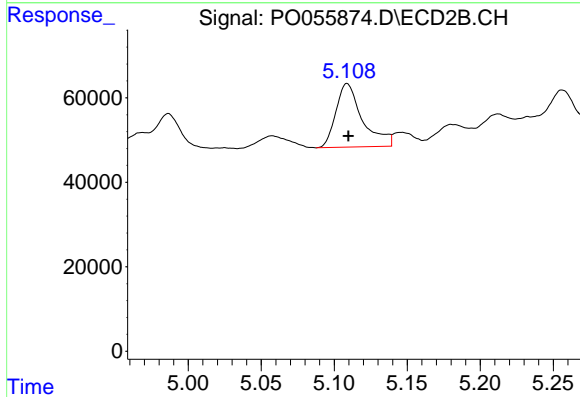
R.T.: 4.937 min
 Delta R.T.: -0.002 min
 Response: 102887
 Conc: 242.22 ng/ml



#15 AR-1232-5

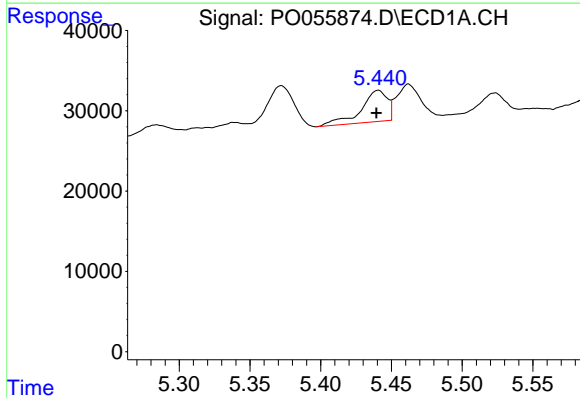
R.T.: 5.711 min
 Delta R.T.: 0.000 min
 Response: 305712
 Conc: 704.12 ng/ml

Instrument :
 ECD_O
 ClientSampleId :



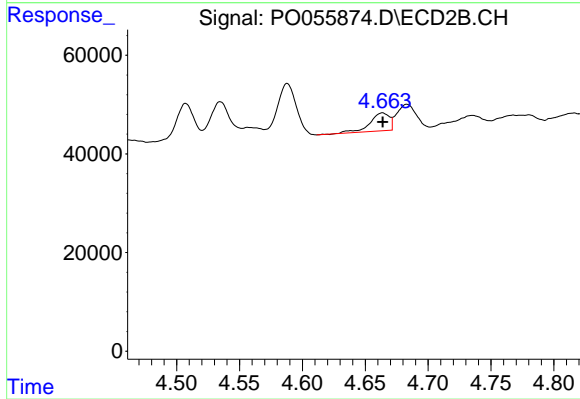
#15 AR-1232-5

R.T.: 5.109 min
 Delta R.T.: 0.000 min
 Response: 189901
 Conc: 391.87 ng/ml



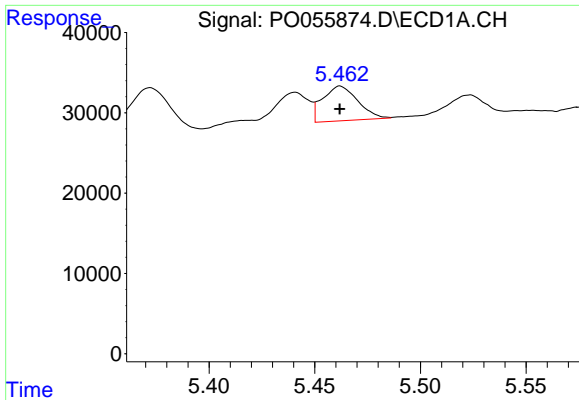
#16 AR-1242-1

R.T.: 5.441 min
 Delta R.T.: 0.001 min
 Response: 50537
 Conc: 41.74 ng/ml



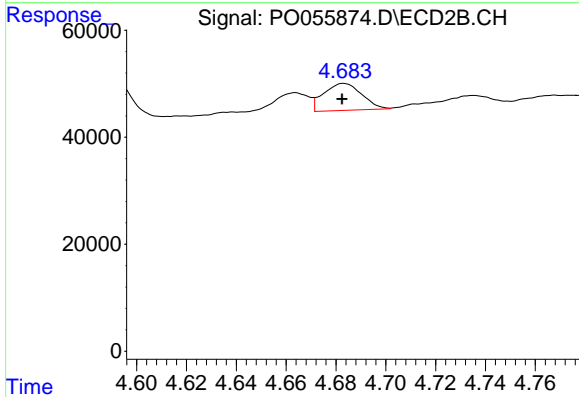
#16 AR-1242-1

R.T.: 4.664 min
 Delta R.T.: 0.000 min
 Response: 39015
 Conc: 34.82 ng/ml

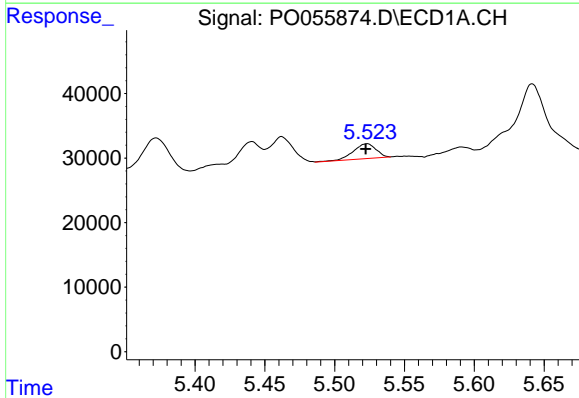


#17 AR-1242-2
 R.T.: 5.462 min
 Delta R.T.: 0.000 min
 Response: 49938
 Conc: 29.58 ng/ml

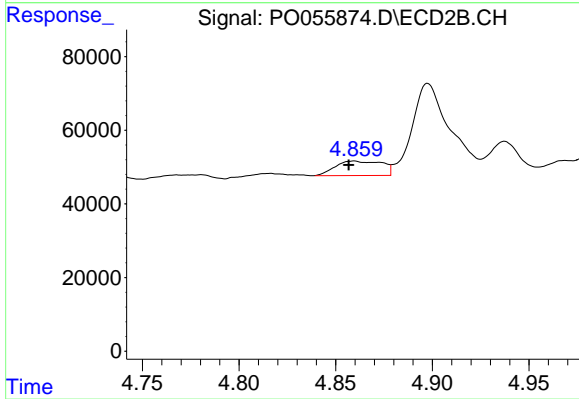
Instrument :
 ECD_O
 ClientSampleId :



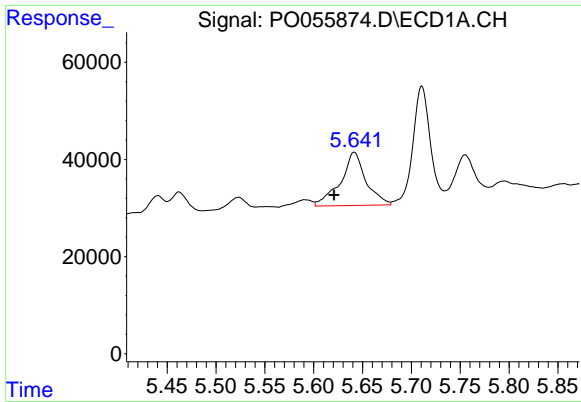
#17 AR-1242-2
 R.T.: 4.683 min
 Delta R.T.: 0.000 min
 Response: 53708
 Conc: 35.30 ng/ml



#18 AR-1242-3
 R.T.: 5.523 min
 Delta R.T.: 0.000 min
 Response: 26095
 Conc: 23.82 ng/ml



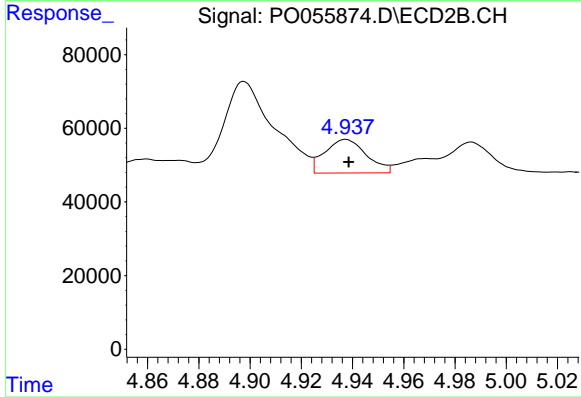
#18 AR-1242-3
 R.T.: 4.860 min
 Delta R.T.: 0.003 min
 Response: 66443
 Conc: 76.72 ng/ml



#19 AR-1242-4

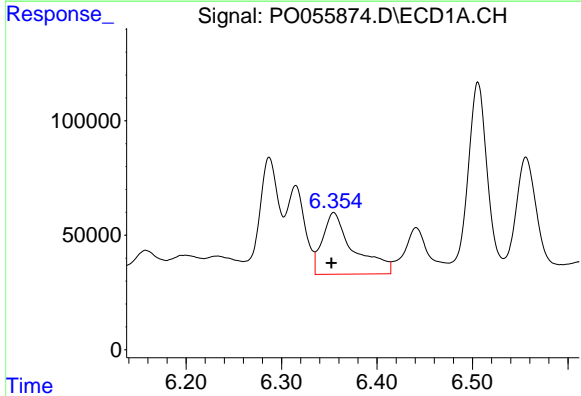
R.T.: 5.642 min
 Delta R.T.: 0.021 min
 Response: 198537
 Conc: 220.64 ng/ml

Instrument :
 ECD_O
 ClientSampled :



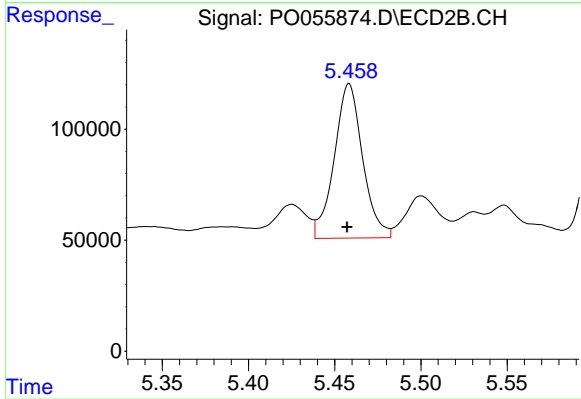
#19 AR-1242-4

R.T.: 4.937 min
 Delta R.T.: -0.001 min
 Response: 102887
 Conc: 122.82 ng/ml



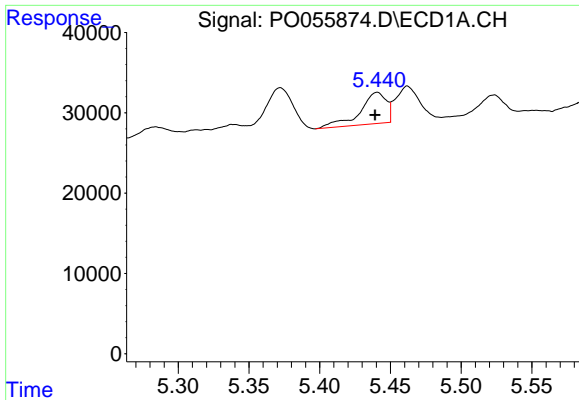
#20 AR-1242-5

R.T.: 6.355 min
 Delta R.T.: 0.002 min
 Response: 608082
 Conc: 555.85 ng/ml



#20 AR-1242-5

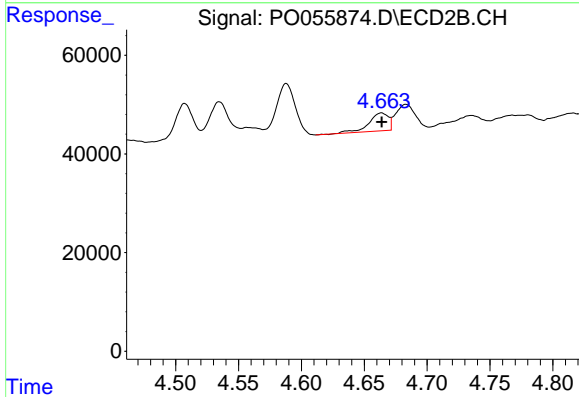
R.T.: 5.458 min
 Delta R.T.: 0.001 min
 Response: 795894
 Conc: 663.03 ng/ml



#21 AR-1248-1

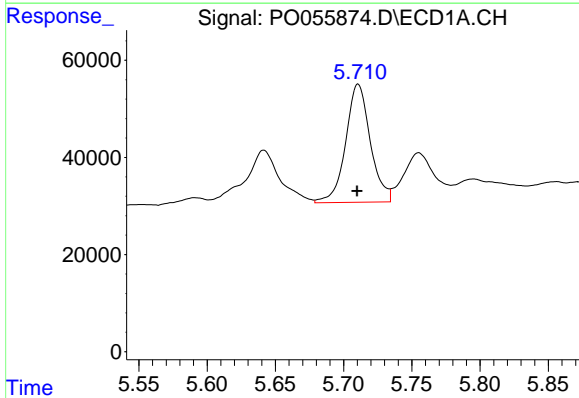
R.T.: 5.441 min
 Delta R.T.: 0.002 min
 Response: 50537
 Conc: 55.83 ng/ml

Instrument :
 ECD_O
 ClientSampleId :



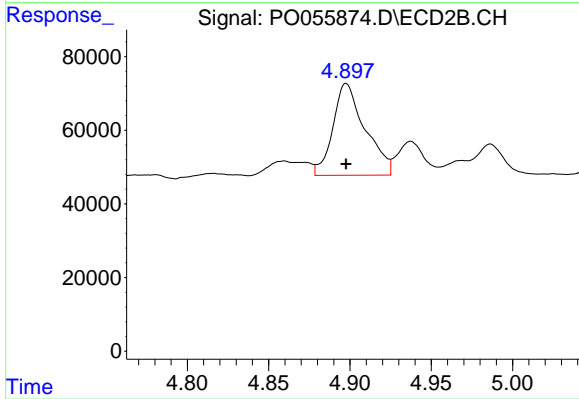
#21 AR-1248-1

R.T.: 4.664 min
 Delta R.T.: 0.000 min
 Response: 39015
 Conc: 46.53 ng/ml



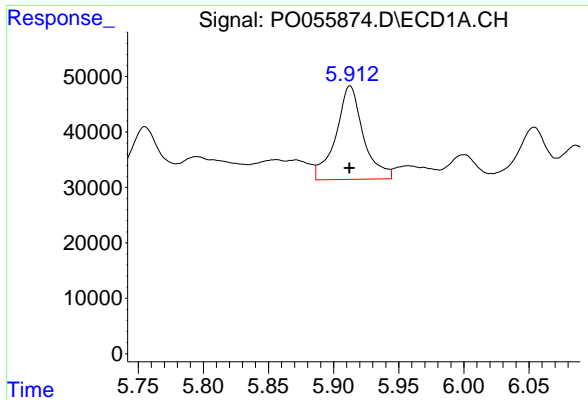
#22 AR-1248-2

R.T.: 5.711 min
 Delta R.T.: 0.000 min
 Response: 305712
 Conc: 229.24 ng/ml



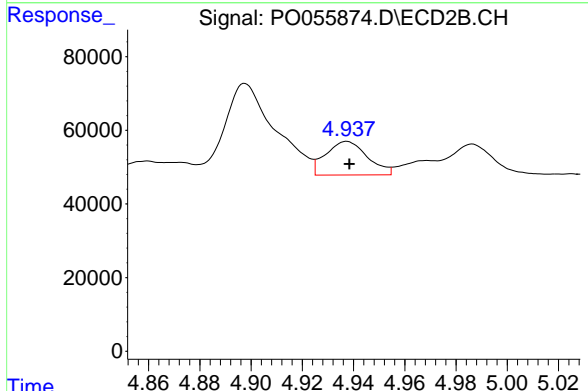
#22 AR-1248-2

R.T.: 4.898 min
 Delta R.T.: 0.000 min
 Response: 343500
 Conc: 312.62 ng/ml

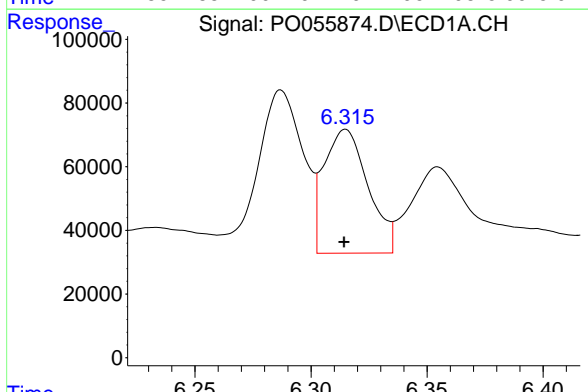


#23 AR-1248-3
 R.T.: 5.913 min
 Delta R.T.: 0.000 min
 Response: 247453
 Conc: 167.57 ng/ml

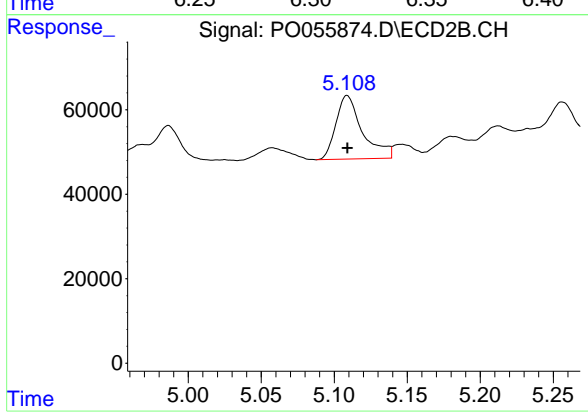
Instrument :
 ECD_O
 ClientSampleId :



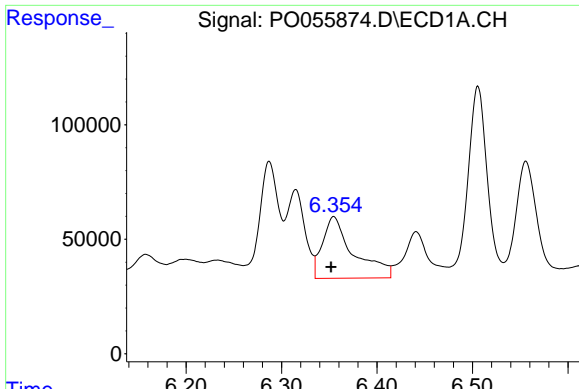
#23 AR-1248-3
 R.T.: 4.937 min
 Delta R.T.: 0.000 min
 Response: 102887
 Conc: 90.64 ng/ml



#24 AR-1248-4
 R.T.: 6.315 min
 Delta R.T.: 0.000 min
 Response: 513719
 Conc: 294.61 ng/ml



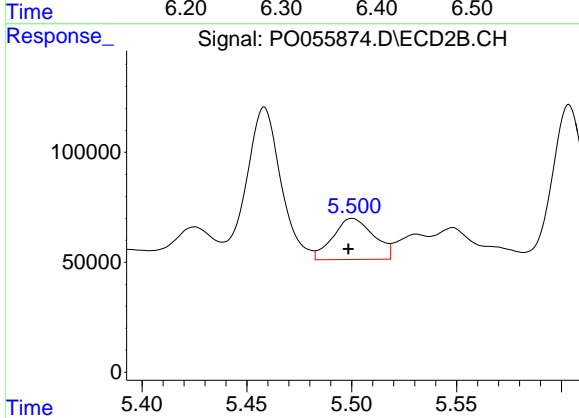
#24 AR-1248-4
 R.T.: 5.109 min
 Delta R.T.: 0.000 min
 Response: 189901
 Conc: 135.24 ng/ml



#25 AR-1248-5

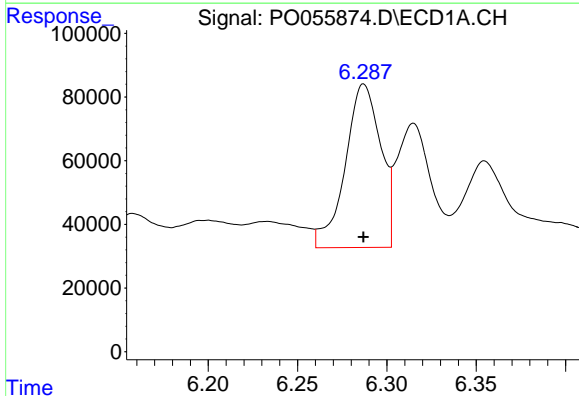
R.T.: 6.355 min
 Delta R.T.: 0.003 min
 Response: 608082
 Conc: 364.05 ng/ml

Instrument :
 ECD_O
 ClientSampleId :



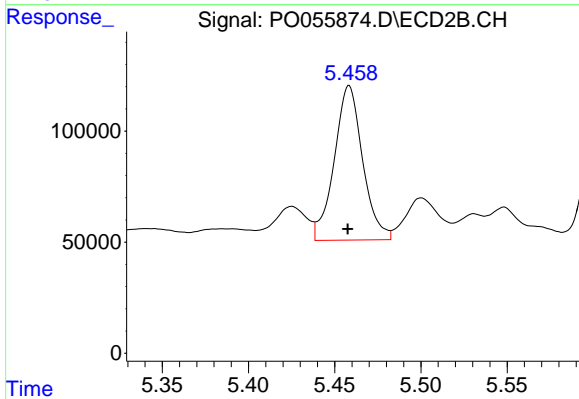
#25 AR-1248-5

R.T.: 5.500 min
 Delta R.T.: 0.002 min
 Response: 253322
 Conc: 169.14 ng/ml



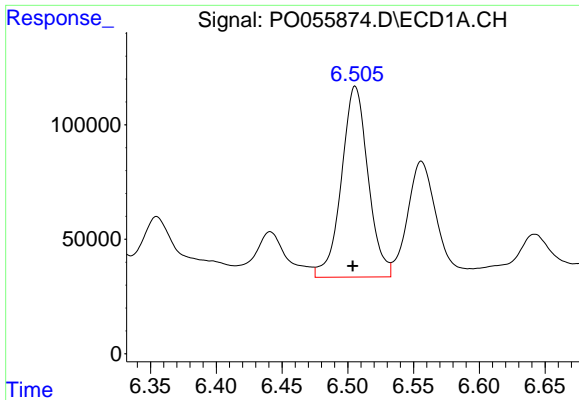
#26 AR-1254-1

R.T.: 6.287 min
 Delta R.T.: 0.000 min
 Response: 709092
 Conc: 337.69 ng/ml



#26 AR-1254-1

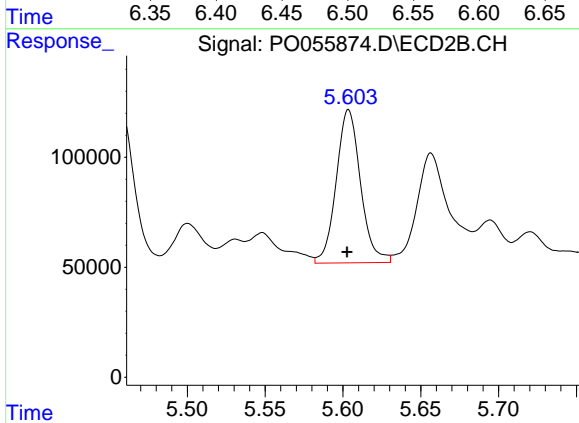
R.T.: 5.458 min
 Delta R.T.: 0.000 min
 Response: 795894
 Conc: 297.38 ng/ml



#27 AR-1254-2

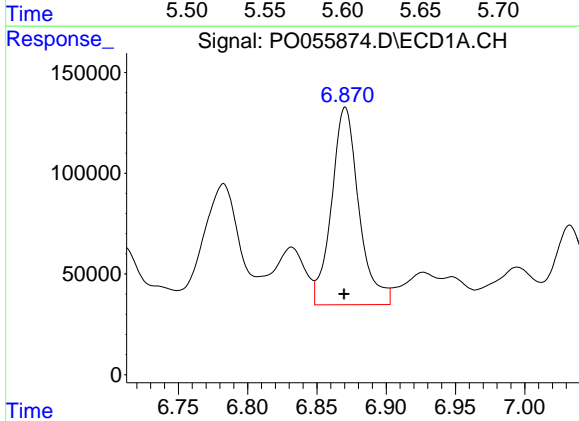
R.T.: 6.506 min
 Delta R.T.: 0.002 min
 Response: 1176046
 Conc: 354.36 ng/ml

Instrument :
 ECD_O
 ClientSampled :



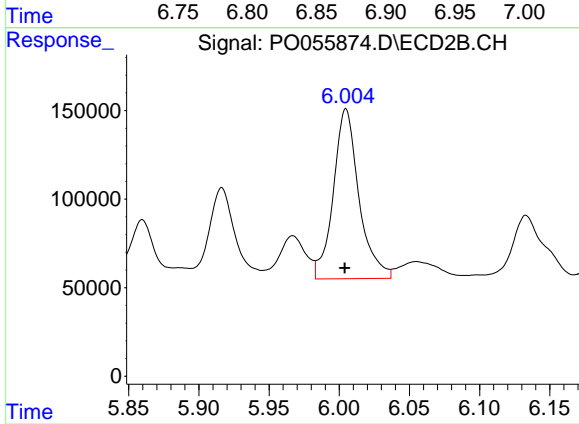
#27 AR-1254-2

R.T.: 5.604 min
 Delta R.T.: 0.000 min
 Response: 757224
 Conc: 309.99 ng/ml



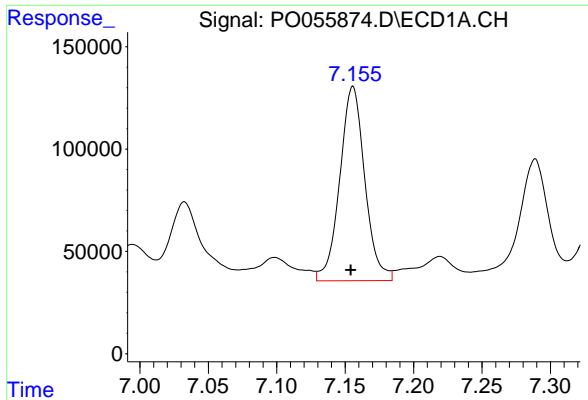
#28 AR-1254-3

R.T.: 6.870 min
 Delta R.T.: 0.000 min
 Response: 1346889
 Conc: 370.48 ng/ml



#28 AR-1254-3

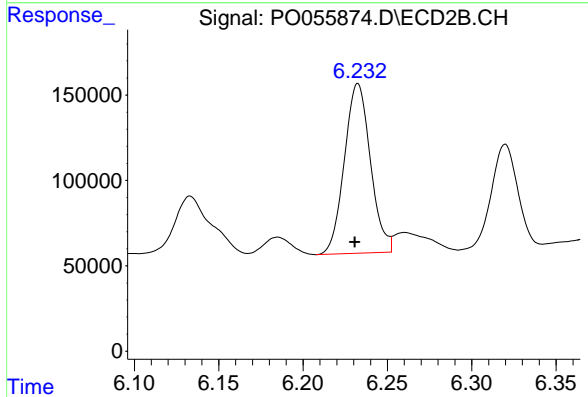
R.T.: 6.005 min
 Delta R.T.: 0.000 min
 Response: 1220159
 Conc: 307.53 ng/ml



#29 AR-1254-4

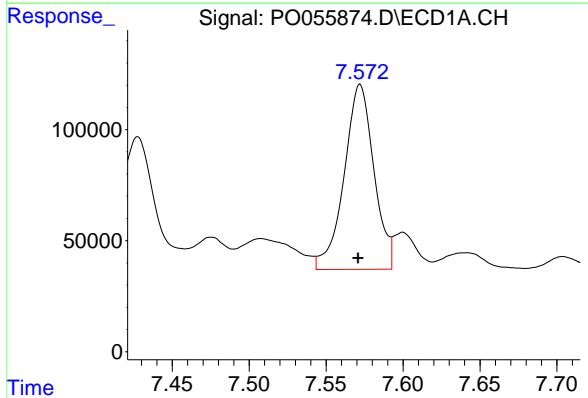
R.T.: 7.156 min
Delta R.T.: 0.002 min
Response: 1209177
Conc: 444.44 ng/ml

Instrument :
ECD_O
ClientSampled :



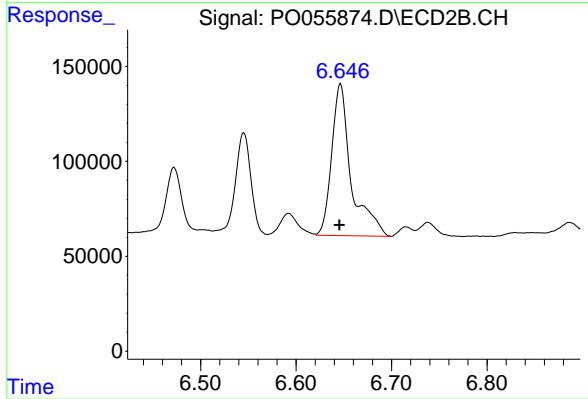
#29 AR-1254-4

R.T.: 6.233 min
Delta R.T.: 0.002 min
Response: 1066724
Conc: 397.86 ng/ml



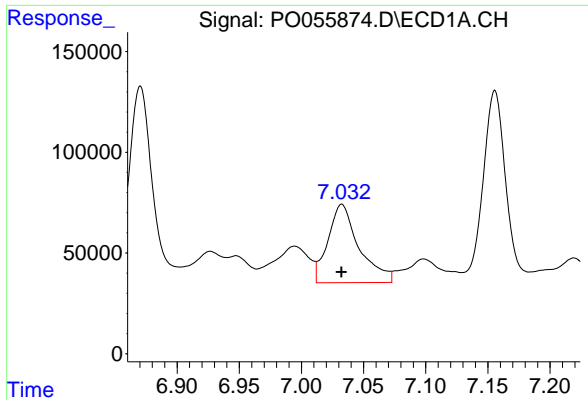
#30 AR-1254-5

R.T.: 7.572 min
Delta R.T.: 0.001 min
Response: 1118765
Conc: 390.34 ng/ml



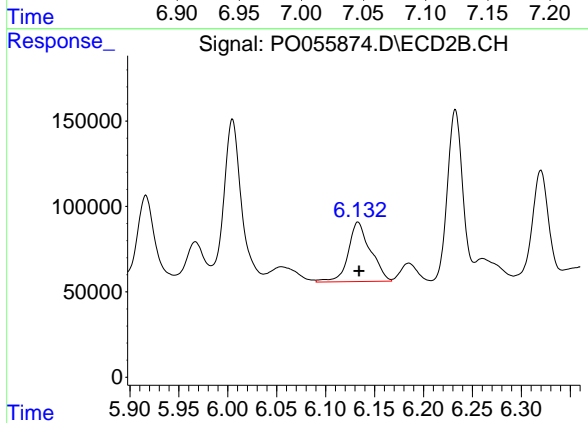
#30 AR-1254-5

R.T.: 6.646 min
Delta R.T.: 0.001 min
Response: 1138674
Conc: 314.67 ng/ml

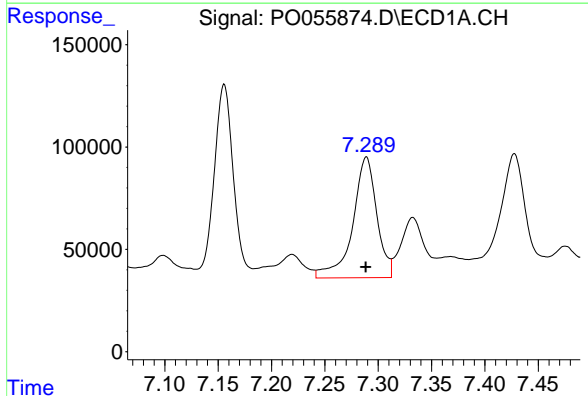


#31 AR-1260-1
 R.T.: 7.032 min
 Delta R.T.: 0.000 min
 Response: 677212
 Conc: 313.60 ng/ml

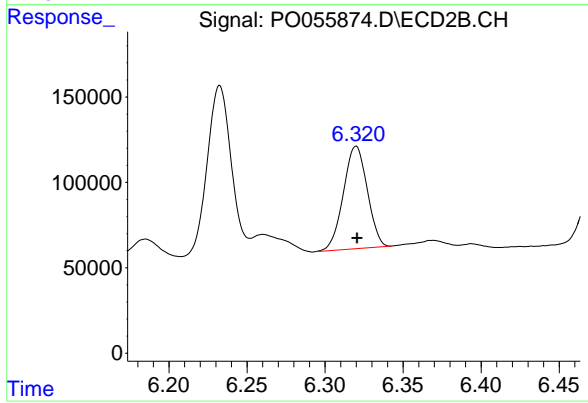
Instrument :
 ECD_O
 ClientSampleId :



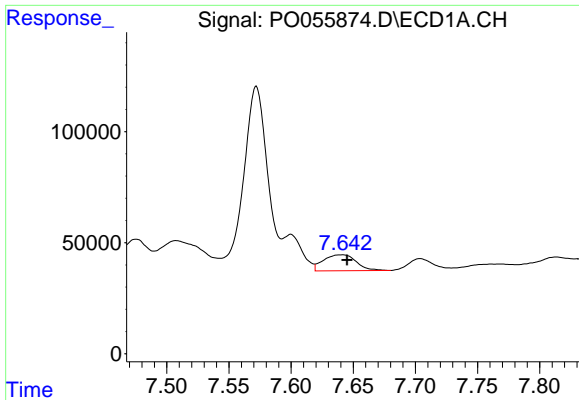
#31 AR-1260-1
 R.T.: 6.133 min
 Delta R.T.: -0.001 min
 Response: 551129
 Conc: 250.15 ng/ml



#32 AR-1260-2
 R.T.: 7.289 min
 Delta R.T.: 0.000 min
 Response: 928502
 Conc: 354.54 ng/ml



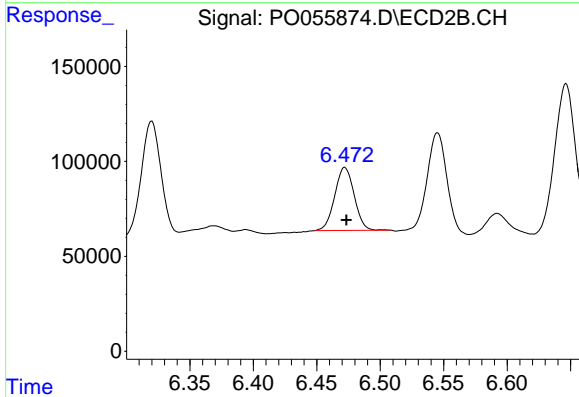
#32 AR-1260-2
 R.T.: 6.320 min
 Delta R.T.: 0.000 min
 Response: 639329
 Conc: 209.37 ng/ml



#33 AR-1260-3

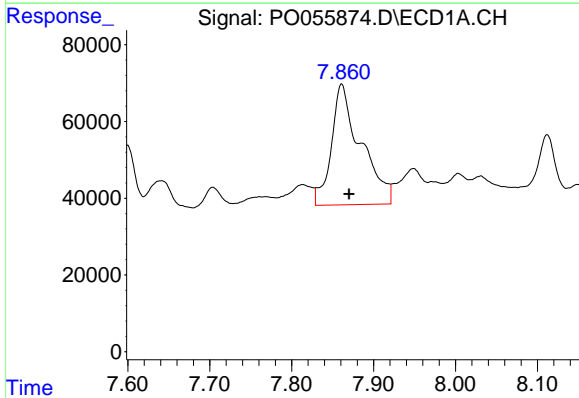
R.T.: 7.641 min
 Delta R.T.: -0.004 min
 Response: 133147
 Conc: 66.57 ng/ml

Instrument :
 ECD_O
 ClientSampled :



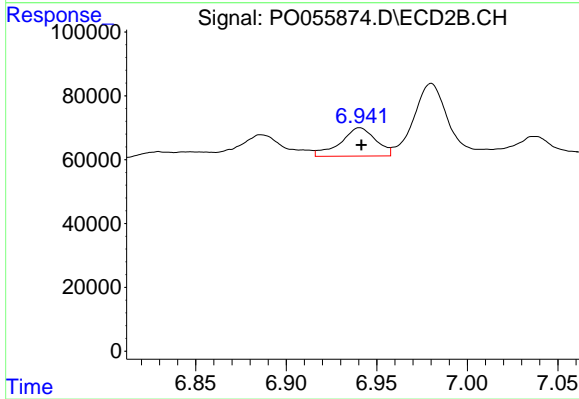
#33 AR-1260-3

R.T.: 6.472 min
 Delta R.T.: -0.001 min
 Response: 355400
 Conc: 142.61 ng/ml



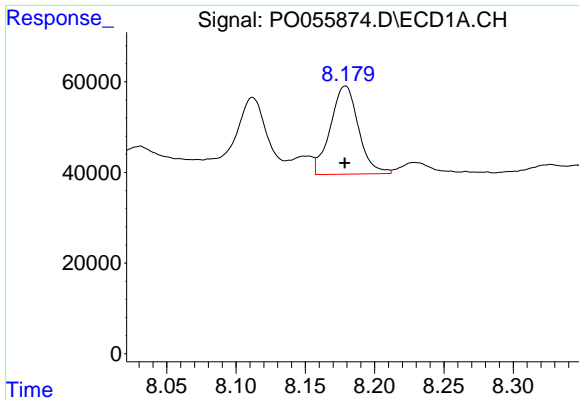
#34 AR-1260-4

R.T.: 7.861 min
 Delta R.T.: -0.009 min
 Response: 785178
 Conc: 339.52 ng/ml



#34 AR-1260-4

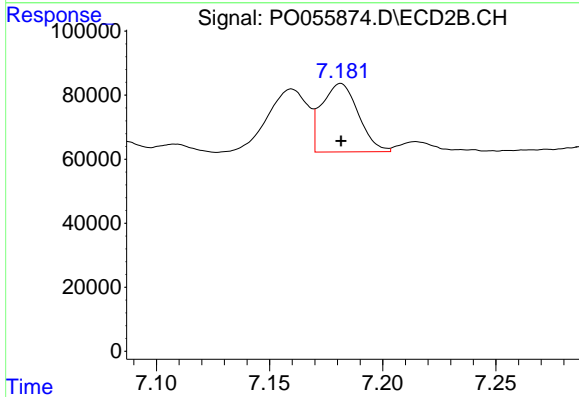
R.T.: 6.941 min
 Delta R.T.: 0.000 min
 Response: 120722
 Conc: 58.50 ng/ml



#35 AR-1260-5

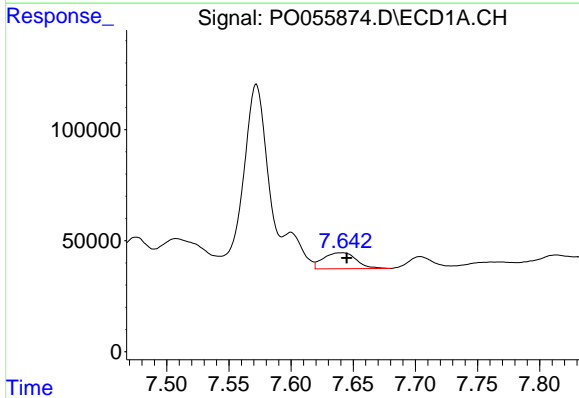
R.T.: 8.179 min
 Delta R.T.: 0.000 min
 Response: 275080
 Conc: 64.84 ng/ml

Instrument :
 ECD_O
 ClientSampleId :



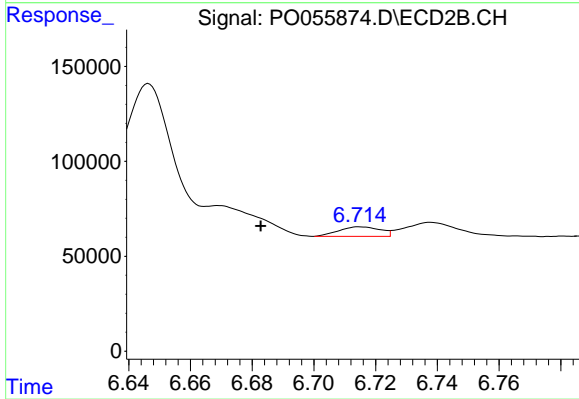
#35 AR-1260-5

R.T.: 7.181 min
 Delta R.T.: 0.000 min
 Response: 241016
 Conc: 47.99 ng/ml



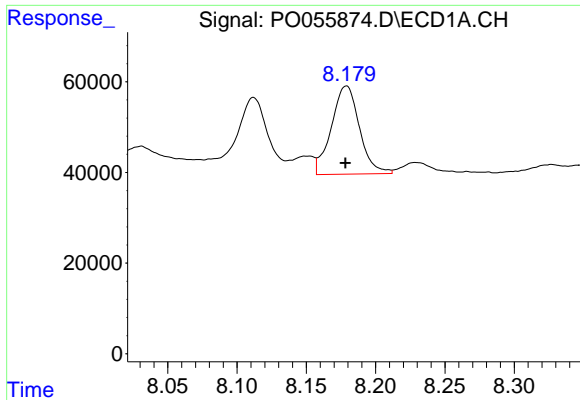
#36 AR-1262-1

R.T.: 7.641 min
 Delta R.T.: -0.004 min
 Response: 133147
 Conc: 41.53 ng/ml



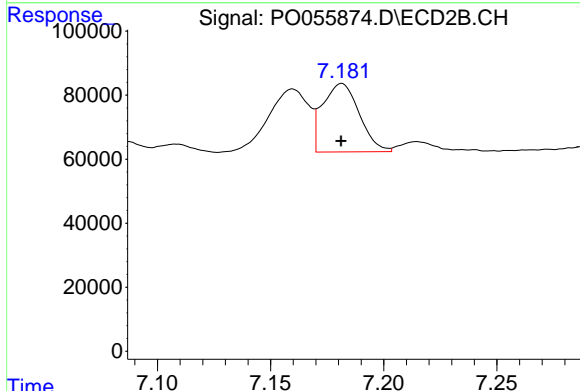
#36 AR-1262-1

R.T.: 6.715 min
 Delta R.T.: 0.032 min
 Response: 47177
 Conc: 11.50 ng/ml

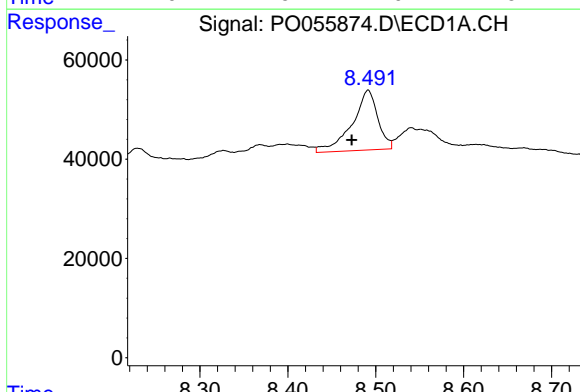


#37 AR-1262-2
 R.T.: 8.179 min
 Delta R.T.: 0.000 min
 Response: 275080
 Conc: 51.24 ng/ml

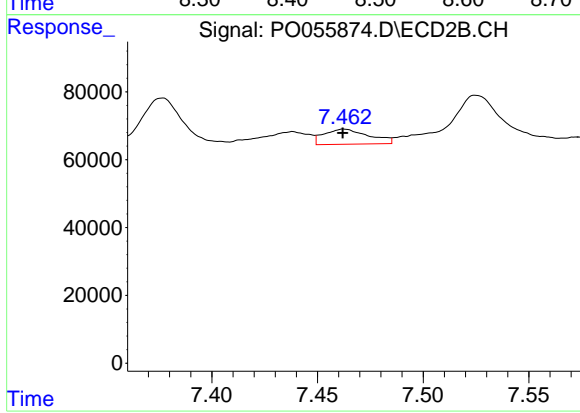
Instrument :
 ECD_O
 ClientSampleId :



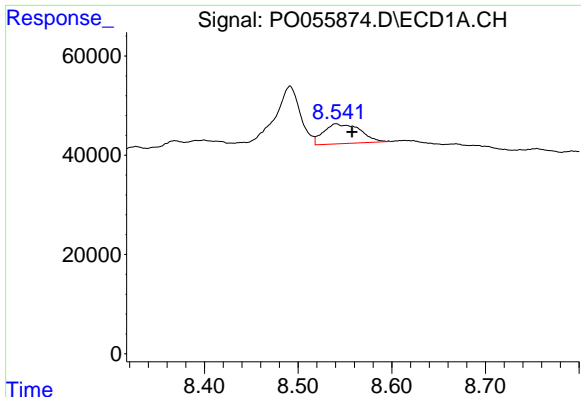
#37 AR-1262-2
 R.T.: 7.181 min
 Delta R.T.: 0.000 min
 Response: 241016
 Conc: 38.55 ng/ml



#38 AR-1262-3
 R.T.: 8.491 min
 Delta R.T.: 0.019 min
 Response: 245386
 Conc: 67.62 ng/ml



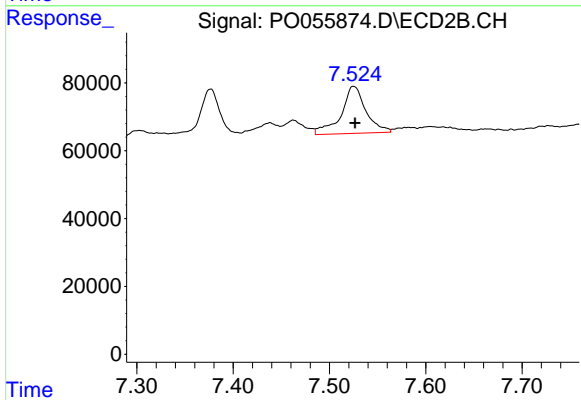
#38 AR-1262-3
 R.T.: 7.463 min
 Delta R.T.: 0.000 min
 Response: 65792
 Conc: 26.71 ng/ml



#39 AR-1262-4

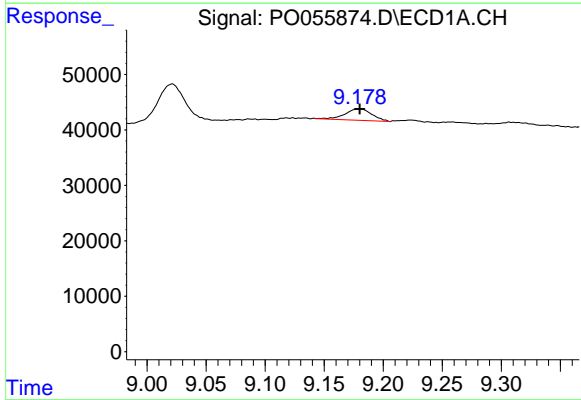
R.T.: 8.540 min
 Delta R.T.: -0.017 min
 Response: 109119
 Conc: 40.19 ng/ml

Instrument :
 ECD_O
 ClientSampled :



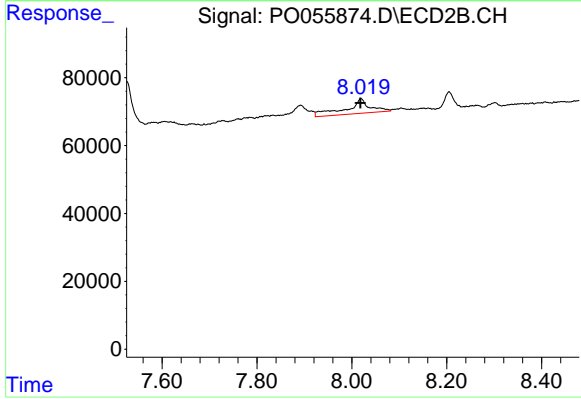
#39 AR-1262-4

R.T.: 7.525 min
 Delta R.T.: -0.001 min
 Response: 247951
 Conc: 60.55 ng/ml



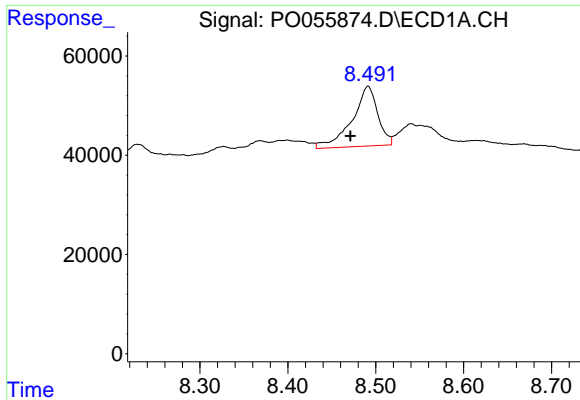
#40 AR-1262-5

R.T.: 9.180 min
 Delta R.T.: 0.000 min
 Response: 32991
 Conc: 18.26 ng/ml



#40 AR-1262-5

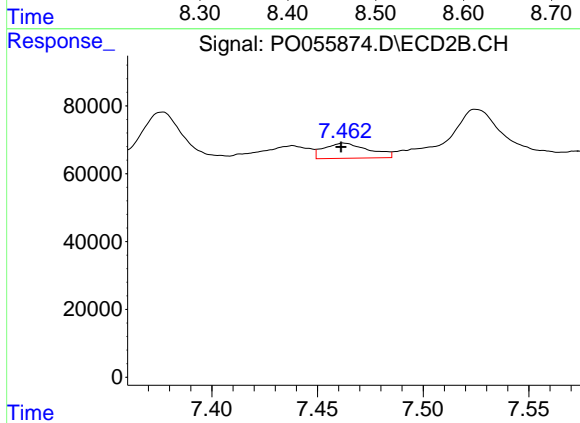
R.T.: 8.019 min
 Delta R.T.: 0.001 min
 Response: 151907
 Conc: 89.14 ng/ml



#41 AR-1268-1

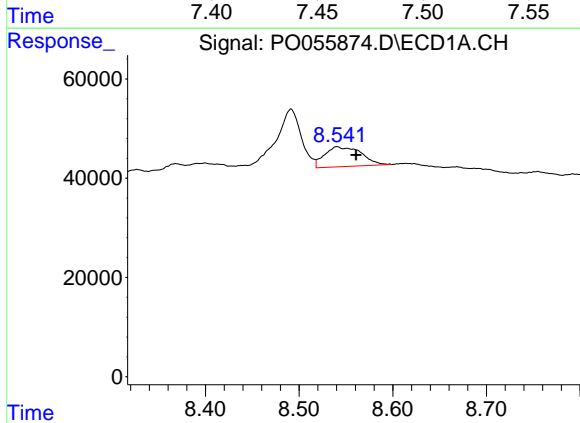
R.T.: 8.491 min
 Delta R.T.: 0.020 min
 Response: 245386
 Conc: 40.63 ng/ml

Instrument :
 ECD_O
 ClientSampleId :



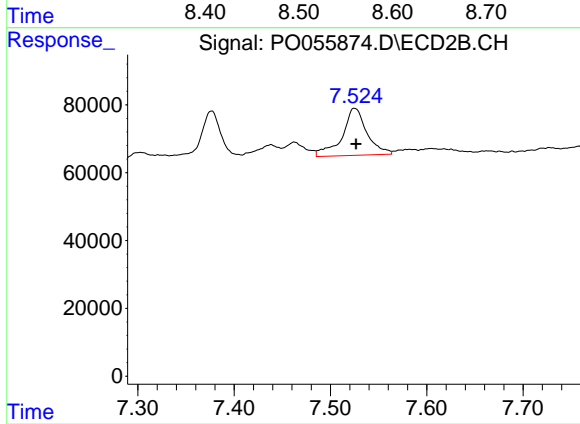
#41 AR-1268-1

R.T.: 7.463 min
 Delta R.T.: 0.001 min
 Response: 65792
 Conc: 9.50 ng/ml



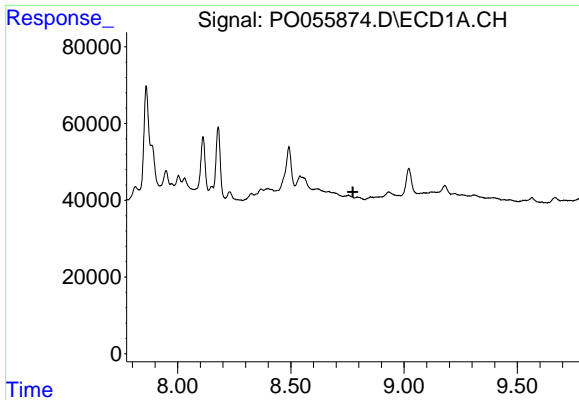
#42 AR-1268-2

R.T.: 8.540 min
 Delta R.T.: -0.020 min
 Response: 109119
 Conc: 19.94 ng/ml



#42 AR-1268-2

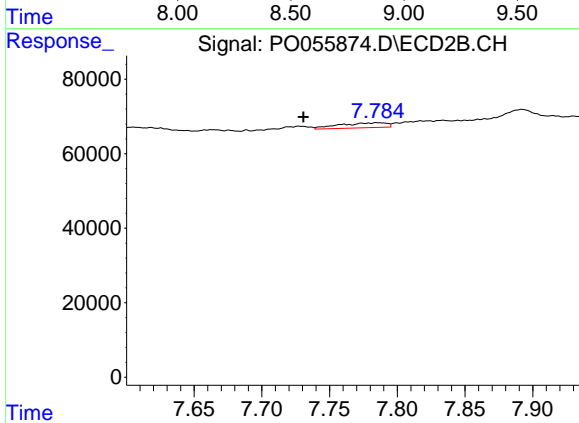
R.T.: 7.525 min
 Delta R.T.: -0.001 min
 Response: 247951
 Conc: 43.58 ng/ml



#43 AR-1268-3

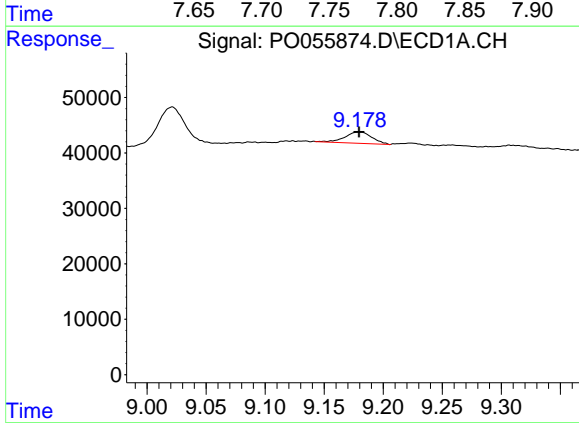
R.T.: 0.000 min
 Exp R.T.: 8.774 min
 Response: 0
 Conc: N.D.

Instrument :
 ECD_O
 ClientSampled :



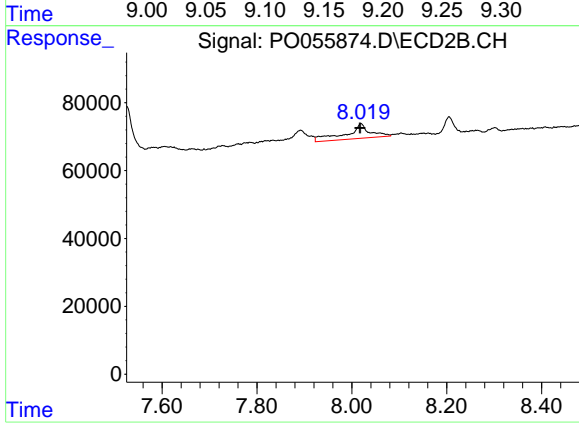
#43 AR-1268-3

R.T.: 7.785 min
 Delta R.T.: 0.055 min
 Response: 32110
 Conc: 6.80 ng/ml



#44 AR-1268-4

R.T.: 9.180 min
 Delta R.T.: 0.000 min
 Response: 32991
 Conc: 16.81 ng/ml



#44 AR-1268-4

R.T.: 8.019 min
 Delta R.T.: 0.002 min
 Response: 151907
 Conc: 80.30 ng/ml