

Data Path : Z:\pestpcbsrv\HPCHEM1\ECD_0\Data\P0050321\
 Data File : P0077477.D
 Signal(s) : Signal #1: ECD1A.CH Signal #2: ECD2B.CH
 Acq On : 03 May 2021 11:04
 Operator : DD\AJ
 Sample : M2229-01
 Misc :
 ALS Vial : 7 Sample Multiplier: 1

Instrument :
 ECD_0
 ClientSampleId :
 TP-6

Integration File signal 1: autoint1.e
 Integration File signal 2: autoint2.e
 Quant Time: May 04 10:15:20 2021
 Quant Method : Z:\pestpcbsrv\HPCHEM1\ECD_0\methods\P0042821.M
 Quant Title : GC EXTRACTABLES
 QLast Update : Thu Apr 29 05:54:04 2021
 Response via : Initial Calibration
 Integrator: ChemStation 6890 Scale Mode: Small noise peaks clipped

Volume Inj. : 2 µl
 Signal #1 Phase : ZB-MR2 Signal #2 Phase: ZB-MR2
 Signal #1 Info : 30Mx0.32mmx 0.50µ Signal #2 Info : 30M x 0.32mm x 0.25µm

	Compound	RT#1	RT#2	Resp#1	Resp#2	ng/ml	ng/ml

System Monitoring Compounds							
1)	SA Tetrachlo...	4.888	3.883	3202246	1011940	29.181	18.128 #
2)	SA Decachlor...	10.856	9.118	2245958	631645	20.425	18.568
Target Compounds							
16)	L4 AR-1242-1	6.212	5.126	16605093	6732826	5791.006	6000.231
17)	L4 AR-1242-2	6.236	5.145	28846486	13970472	5842.544	5645.405
18)	L4 AR-1242-3	6.302	5.335	15372158	5973118	4825.748	5432.347
19)	L4 AR-1242-4	6.409	5.429	13345442	5803934	5633.921	4721.555
20)	L4 AR-1242-5	7.192	5.990	14225648	7596285	5154.250	4949.150
31)	L7 AR-1260-1	7.899	6.698	2819612	2224077	456.064	706.764 #
32)	L7 AR-1260-2	8.163	6.896	4944321	1910100	660.067	513.658
33)	L7 AR-1260-3	8.529	7.047	1748492	1976334	349.258	574.552 #
34)	L7 AR-1260-4	8.756	7.526	3132698	806576	572.060	337.578 #
35)	L7 AR-1260-5	9.081	7.775	3709172	1801815	341.912	343.801

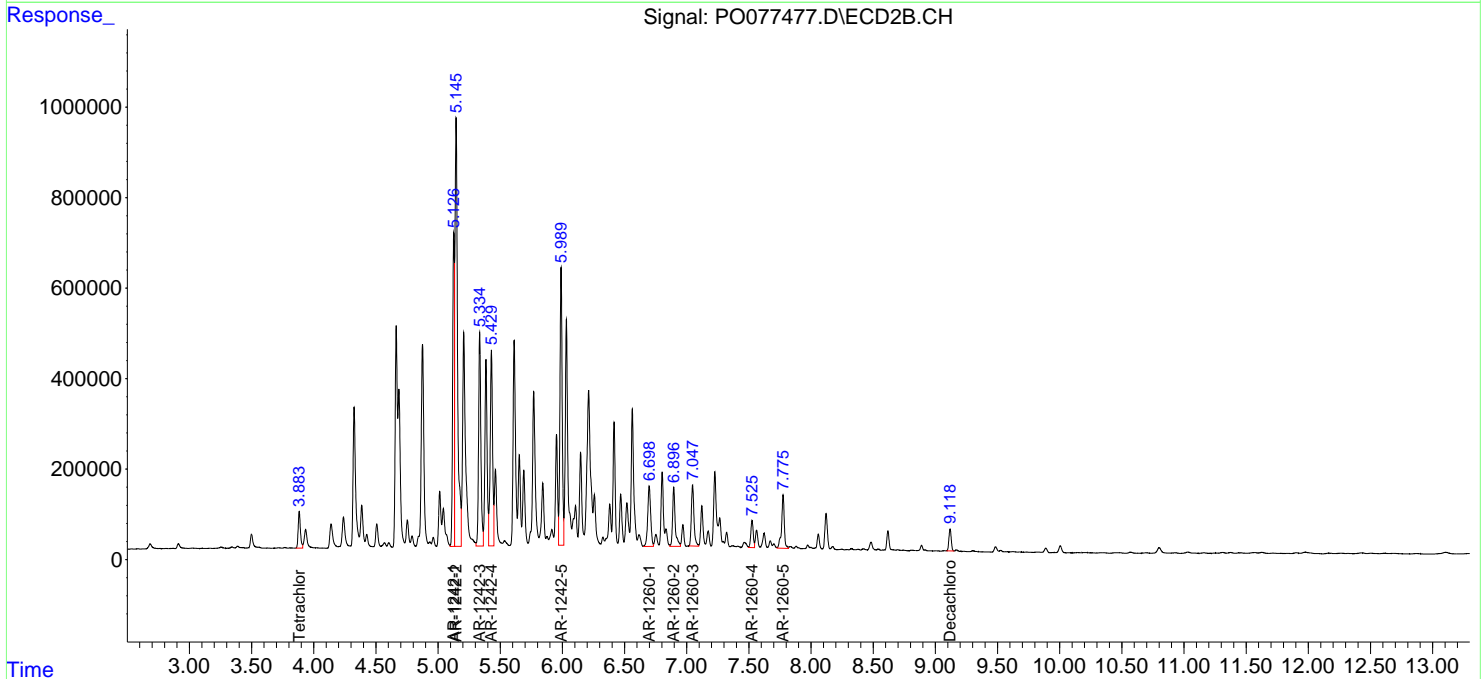
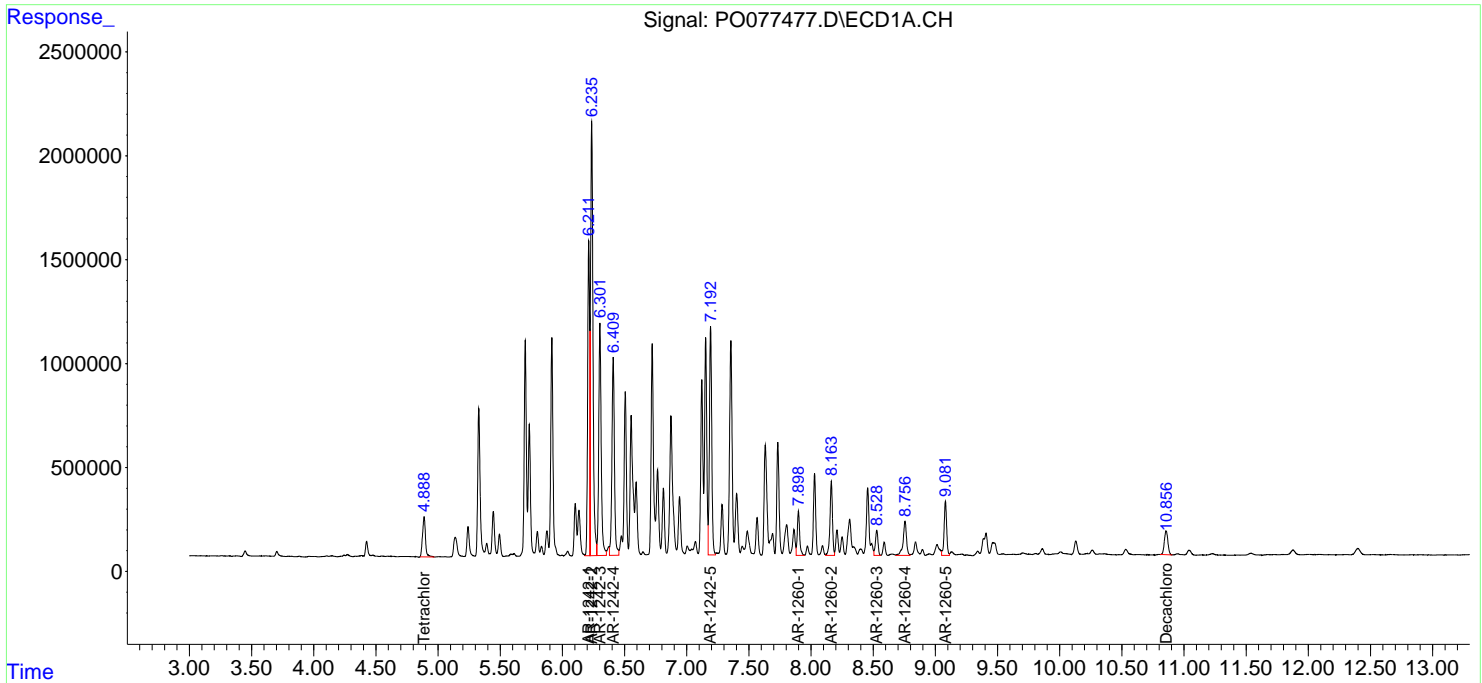
(f)=RT Delta > 1/2 Window (#)=Amounts differ by > 25% (m)=manual int.

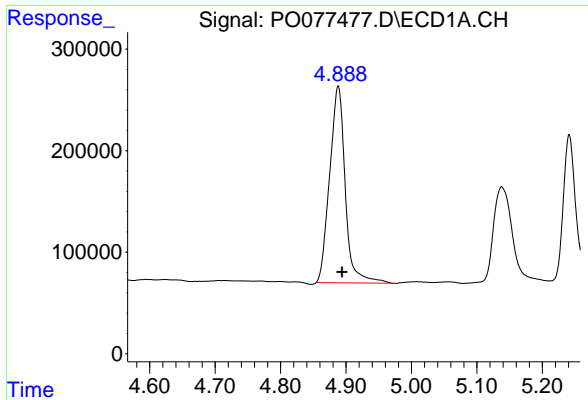
Data Path : Z:\pestpcbsrv\HPCHEM1\ECD_0\Data\P0050321\
 Data File : P0077477.D
 Signal(s) : Signal #1: ECD1A.CH Signal #2: ECD2B.CH
 Acq On : 03 May 2021 11:04
 Operator : DD\AJ
 Sample : M2229-01
 Misc :
 ALS Vial : 7 Sample Multiplier: 1

Instrument :
 ECD_O
 ClientSampled :
 TP-6

Integration File signal 1: autoint1.e
 Integration File signal 2: autoint2.e
 Quant Time: May 04 10:15:20 2021
 Quant Method : Z:\pestpcbsrv\HPCHEM1\ECD_0\methods\P0042821.M
 Quant Title : GC EXTRACTABLES
 QLast Update : Thu Apr 29 05:54:04 2021
 Response via : Initial Calibration
 Integrator: ChemStation 6890 Scale Mode: Small noise peaks clipped

Volume Inj. : 2 µl
 Signal #1 Phase : ZB-MR1 Signal #2 Phase: ZB-MR2
 Signal #1 Info : 30Mx0.32mmx 0.50µ Signal #2 Info : 30M x 0.32mm x 0.25µm

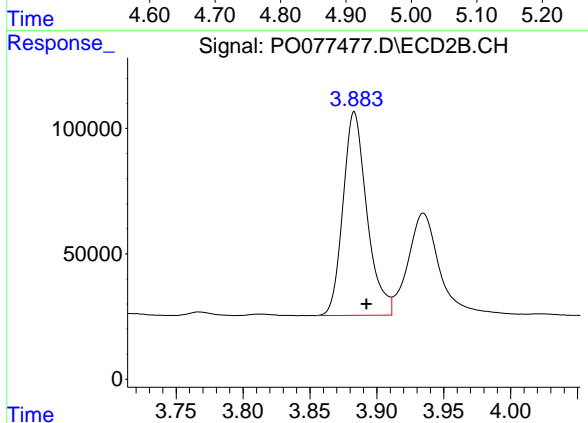




#1 Tetrachloro-m-xylene

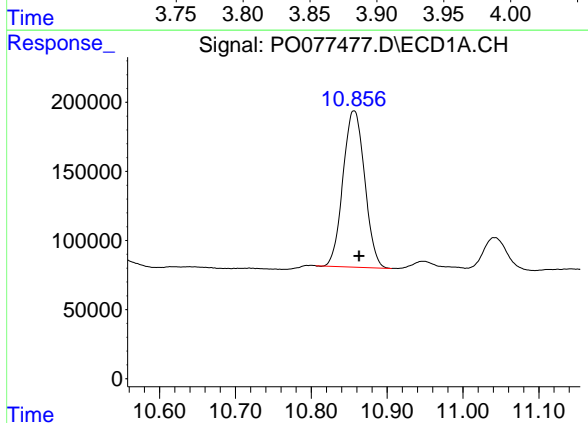
R.T.: 4.888 min
 Delta R.T.: -0.006 min
 Response: 3202246
 Conc: 29.18 ng/ml

Instrument :
 ECD_O
 ClientSampled :
 TP-6



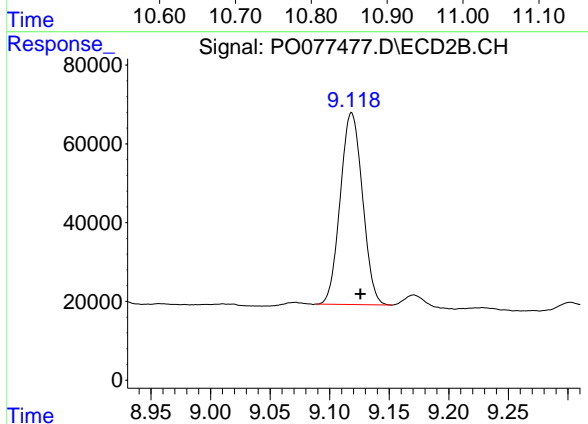
#1 Tetrachloro-m-xylene

R.T.: 3.883 min
 Delta R.T.: -0.009 min
 Response: 1011940
 Conc: 18.13 ng/ml



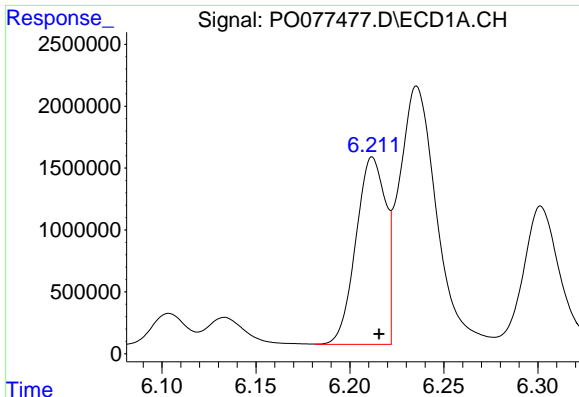
#2 Decachlorobiphenyl

R.T.: 10.856 min
 Delta R.T.: -0.007 min
 Response: 2245958
 Conc: 20.42 ng/ml



#2 Decachlorobiphenyl

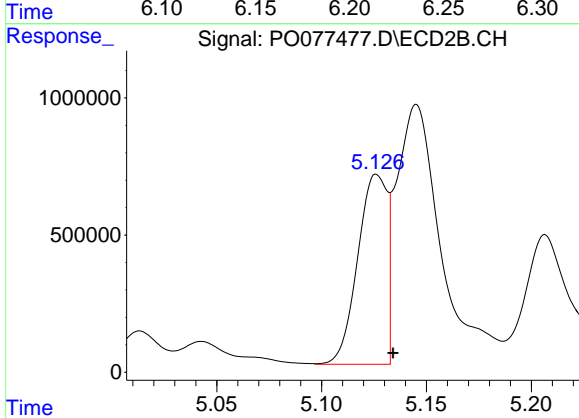
R.T.: 9.118 min
 Delta R.T.: -0.007 min
 Response: 631645
 Conc: 18.57 ng/ml



#16 AR-1242-1

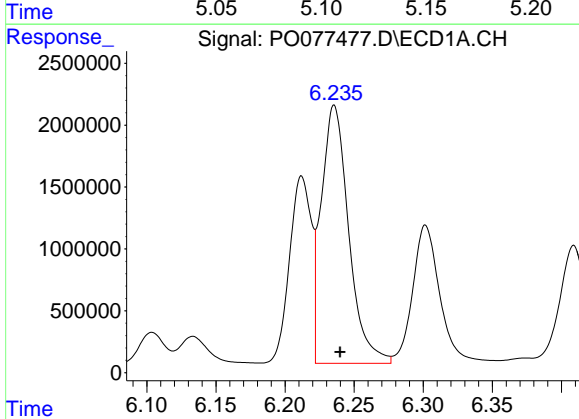
R.T.: 6.212 min
 Delta R.T.: -0.003 min
 Response: 16605093
 Conc: 5791.01 ng/ml

Instrument :
 ECD_O
 ClientSampled :
 TP-6



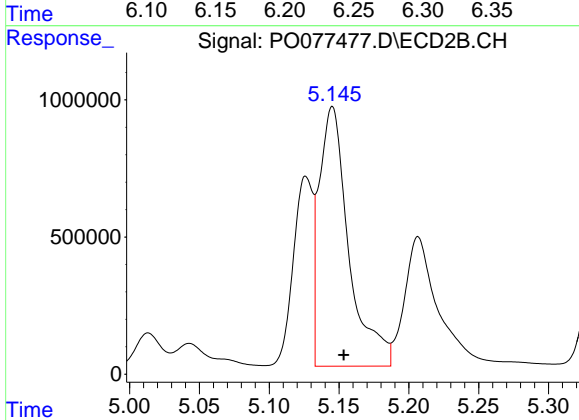
#16 AR-1242-1

R.T.: 5.126 min
 Delta R.T.: -0.008 min
 Response: 6732826
 Conc: 6000.23 ng/ml



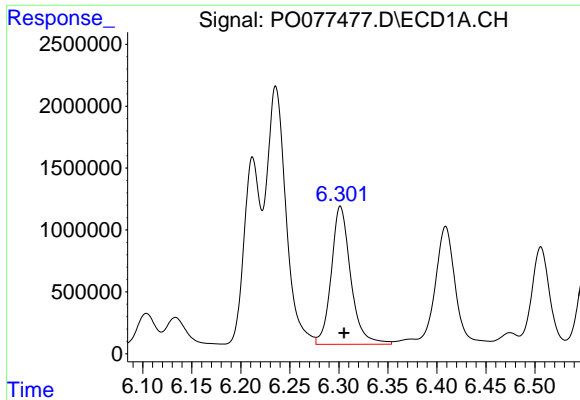
#17 AR-1242-2

R.T.: 6.236 min
 Delta R.T.: -0.004 min
 Response: 28846486
 Conc: 5842.54 ng/ml



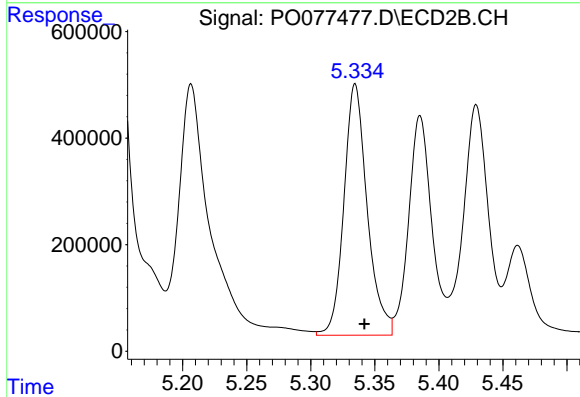
#17 AR-1242-2

R.T.: 5.145 min
 Delta R.T.: -0.008 min
 Response: 13970472
 Conc: 5645.40 ng/ml

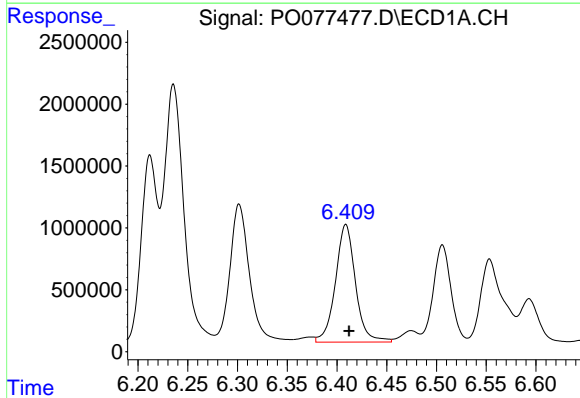


#18 AR-1242-3
 R.T.: 6.302 min
 Delta R.T.: -0.004 min
 Response: 15372158
 Conc: 4825.75 ng/ml

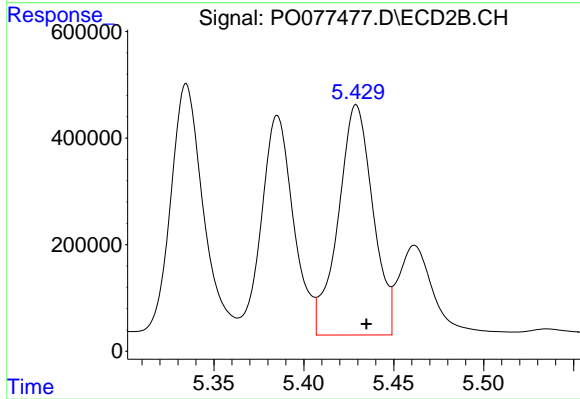
Instrument :
 ECD_O
 ClientSampled :
 TP-6



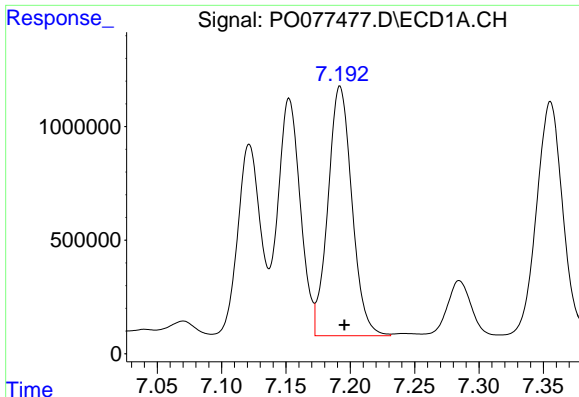
#18 AR-1242-3
 R.T.: 5.335 min
 Delta R.T.: -0.007 min
 Response: 5973118
 Conc: 5432.35 ng/ml



#19 AR-1242-4
 R.T.: 6.409 min
 Delta R.T.: -0.003 min
 Response: 13345442
 Conc: 5633.92 ng/ml



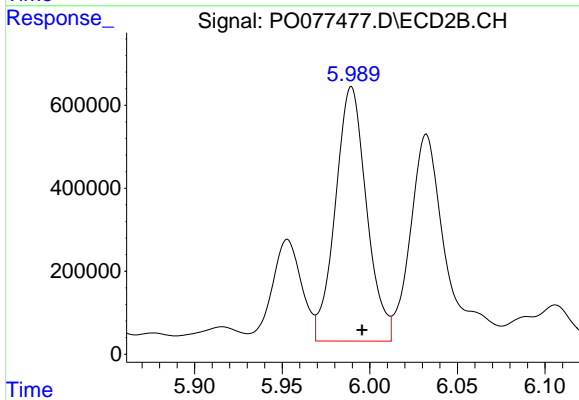
#19 AR-1242-4
 R.T.: 5.429 min
 Delta R.T.: -0.006 min
 Response: 5803934
 Conc: 4721.56 ng/ml



#20 AR-1242-5

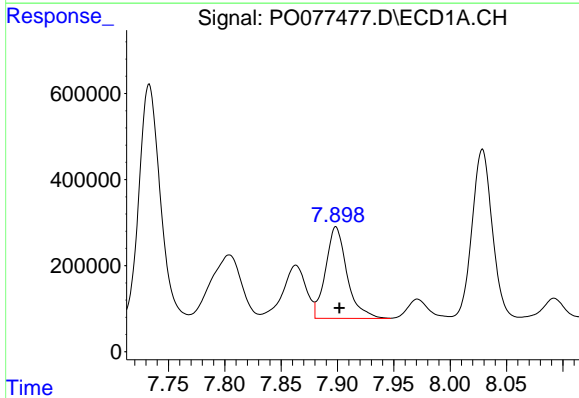
R.T.: 7.192 min
 Delta R.T.: -0.003 min
 Response: 14225648
 Conc: 5154.25 ng/ml

Instrument :
 ECD_O
 ClientSampleId :
 TP-6



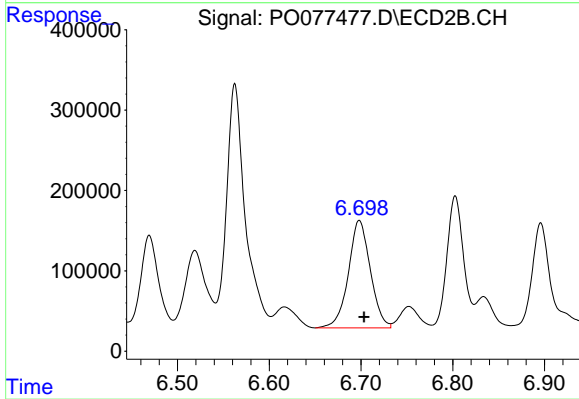
#20 AR-1242-5

R.T.: 5.990 min
 Delta R.T.: -0.006 min
 Response: 7596285
 Conc: 4949.15 ng/ml



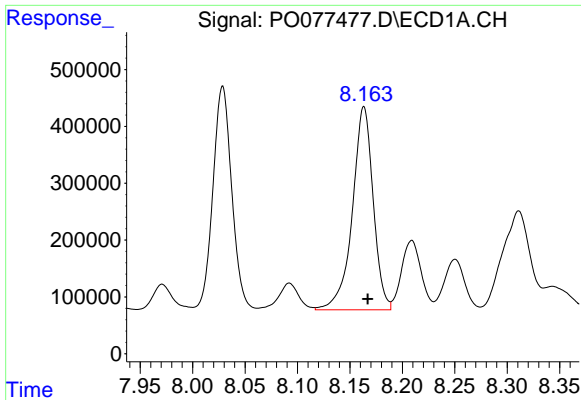
#31 AR-1260-1

R.T.: 7.899 min
 Delta R.T.: -0.003 min
 Response: 2819612
 Conc: 456.06 ng/ml



#31 AR-1260-1

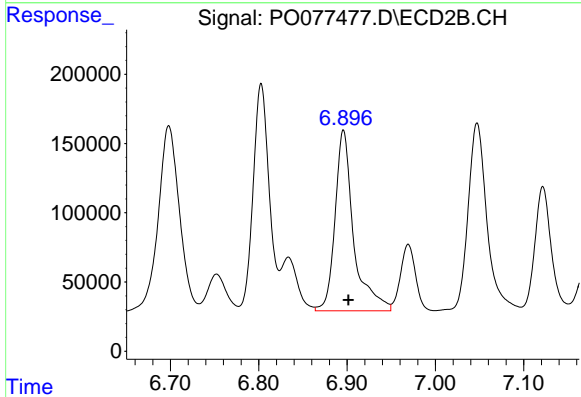
R.T.: 6.698 min
 Delta R.T.: -0.005 min
 Response: 2224077
 Conc: 706.76 ng/ml



#32 AR-1260-2

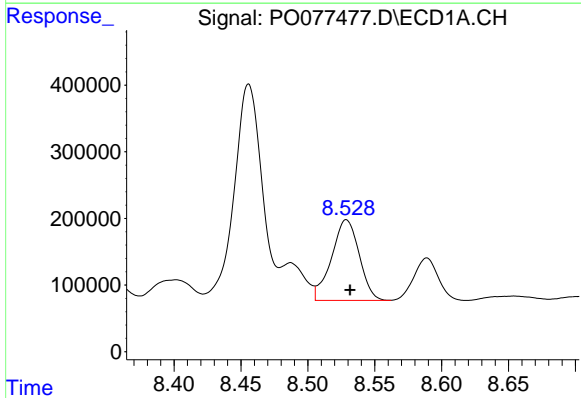
R.T.: 8.163 min
 Delta R.T.: -0.004 min
 Response: 4944321
 Conc: 660.07 ng/ml

Instrument :
 ECD_O
 ClientSampled :
 TP-6



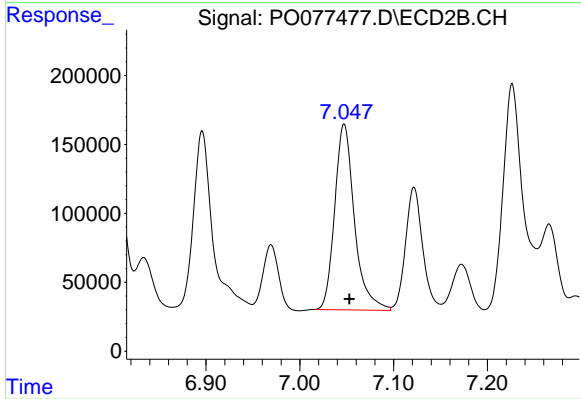
#32 AR-1260-2

R.T.: 6.896 min
 Delta R.T.: -0.006 min
 Response: 1910100
 Conc: 513.66 ng/ml



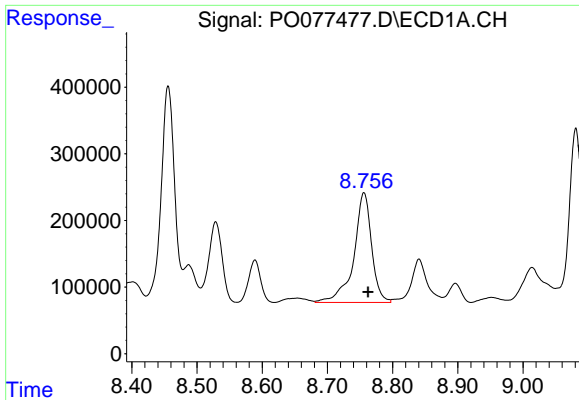
#33 AR-1260-3

R.T.: 8.529 min
 Delta R.T.: -0.003 min
 Response: 1748492
 Conc: 349.26 ng/ml



#33 AR-1260-3

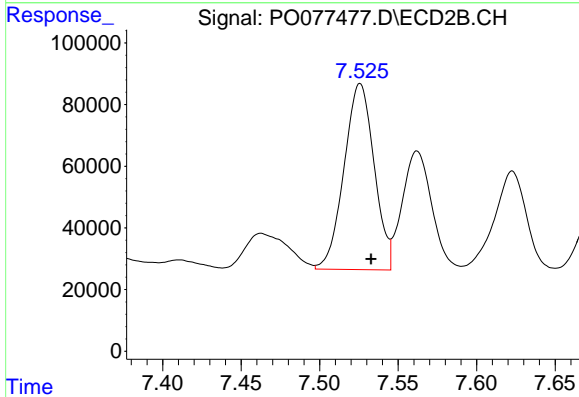
R.T.: 7.047 min
 Delta R.T.: -0.006 min
 Response: 1976334
 Conc: 574.55 ng/ml



#34 AR-1260-4

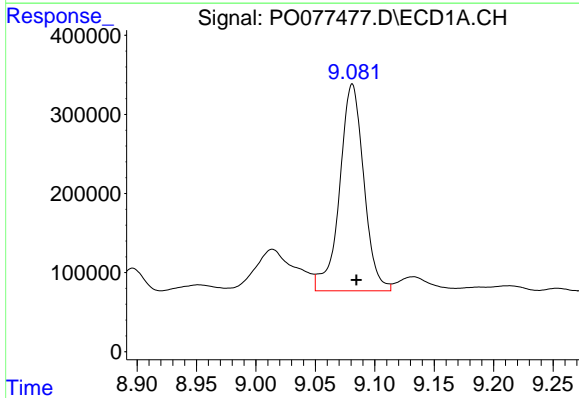
R.T.: 8.756 min
 Delta R.T.: -0.006 min
 Response: 3132698
 Conc: 572.06 ng/ml

Instrument :
 ECD_O
 ClientSampled :
 TP-6



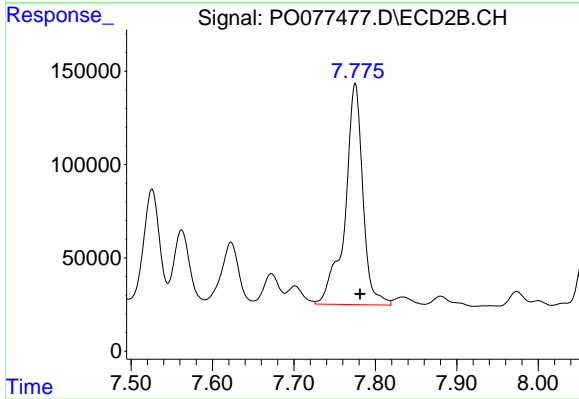
#34 AR-1260-4

R.T.: 7.526 min
 Delta R.T.: -0.007 min
 Response: 806576
 Conc: 337.58 ng/ml



#35 AR-1260-5

R.T.: 9.081 min
 Delta R.T.: -0.004 min
 Response: 3709172
 Conc: 341.91 ng/ml



#35 AR-1260-5

R.T.: 7.775 min
 Delta R.T.: -0.006 min
 Response: 1801815
 Conc: 343.80 ng/ml