

Data Path : Z:\pestpcbsrv\HPCHEM1\ECD_0\Data\P0050321\
 Data File : P0077484.D
 Signal(s) : Signal #1: ECD1A.CH Signal #2: ECD2B.CH
 Acq On : 03 May 2021 13:10
 Operator : DD\AJ
 Sample : PB136117BL
 Misc :
 ALS Vial : 10 Sample Multiplier: 1

Instrument :
 ECD_0
 ClientSampleId :
 PB136117BL

Integration File signal 1: autoint1.e
 Integration File signal 2: autoint2.e
 Quant Time: May 03 14:45:46 2021
 Quant Method : Z:\pestpcbsrv\HPCHEM1\ECD_0\methods\P0042821.M
 Quant Title : GC EXTRACTABLES
 QLast Update : Thu Apr 29 05:54:04 2021
 Response via : Initial Calibration
 Integrator: ChemStation 6890 Scale Mode: Small noise peaks clipped

Volume Inj. : 2 µl
 Signal #1 Phase : ZB-MR1 Signal #2 Phase: ZB-MR2
 Signal #1 Info : 30Mx0.32mmx 0.50µ Signal #2 Info : 30M x 0.32mm x 0.25µm

Compound	RT#1	RT#2	Resp#1	Resp#2	ng/ml	ng/ml

System Monitoring Compounds						
1) SA Tetrachlo...	4.890	3.884	2148727	1055766	19.581	18.913
2) SA Decachlor...	10.855	9.119	2335428	694268	21.239	20.408

Target Compounds

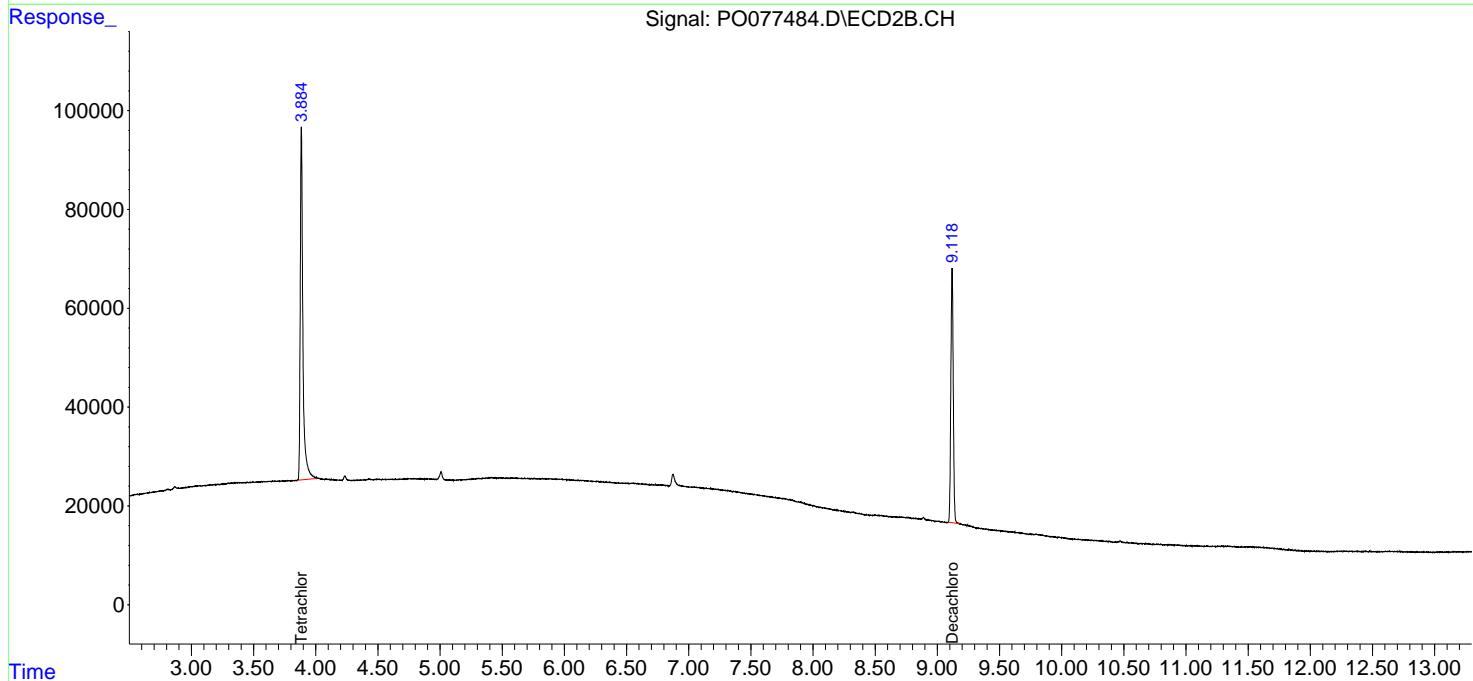
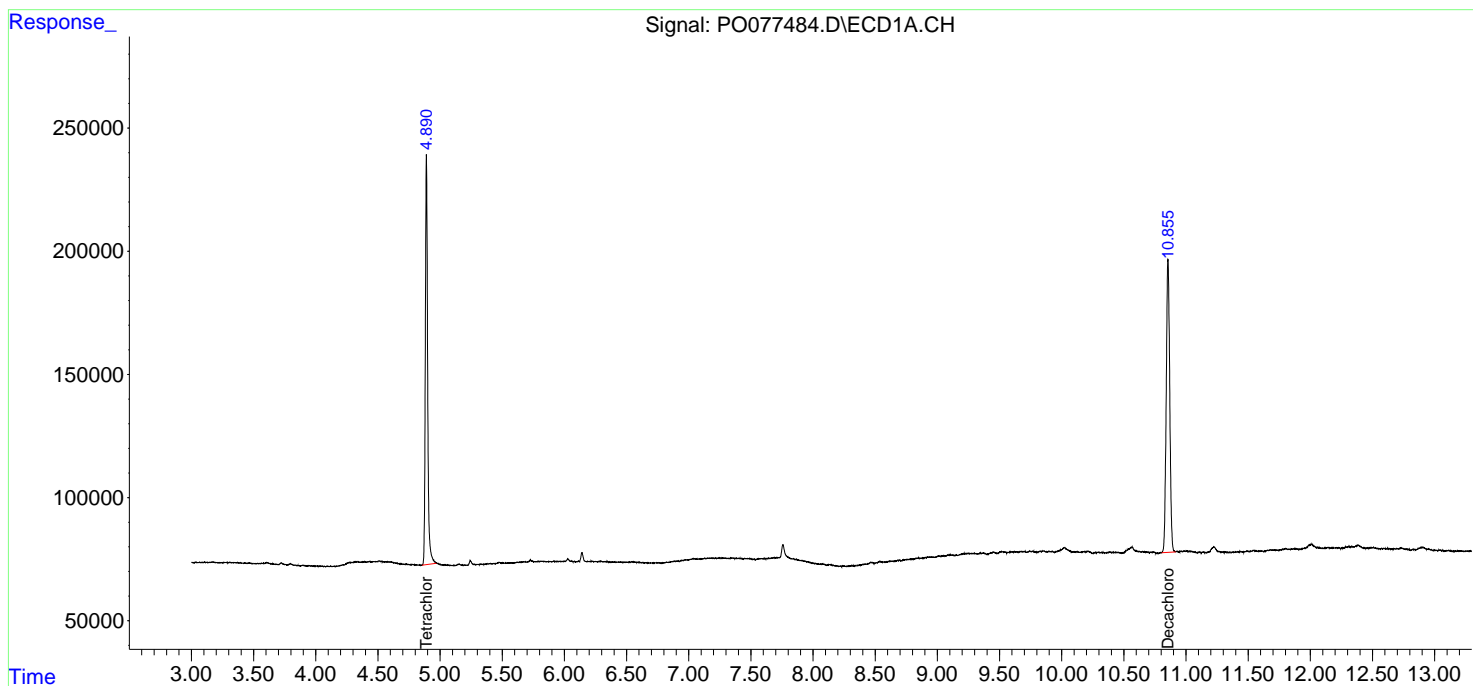
(f)=RT Delta > 1/2 Window (#)=Amounts differ by > 25% (m)=manual int.

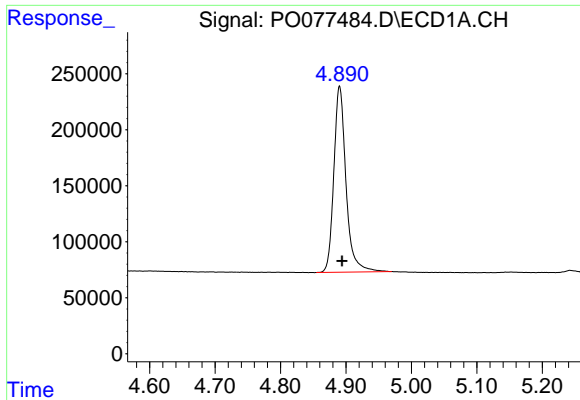
Data Path : Z:\pestpcbsrv\HPCHEM1\ECD_0\Data\P0050321\
 Data File : P0077484.D
 Signal(s) : Signal #1: ECD1A.CH Signal #2: ECD2B.CH
 Acq On : 03 May 2021 13:10
 Operator : DD\AJ
 Sample : PB136117BL
 Misc :
 ALS Vial : 10 Sample Multiplier: 1

Instrument :
 ECD_O
 ClientSampleId :
 PB136117BL

Integration File signal 1: autoint1.e
 Integration File signal 2: autoint2.e
 Quant Time: May 03 14:45:46 2021
 Quant Method : Z:\pestpcbsrv\HPCHEM1\ECD_0\methods\P0042821.M
 Quant Title : GC EXTRACTABLES
 QLast Update : Thu Apr 29 05:54:04 2021
 Response via : Initial Calibration
 Integrator: ChemStation 6890 Scale Mode: Small noise peaks clipped

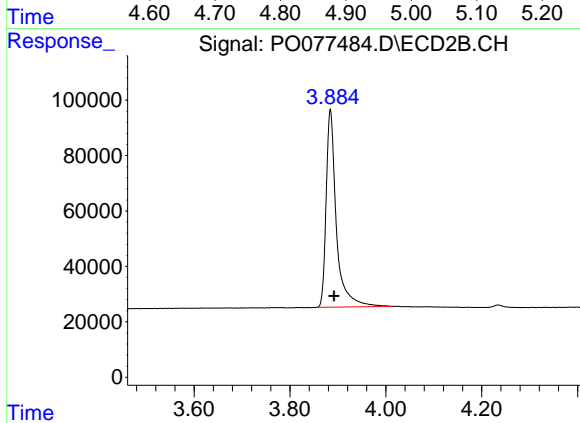
Volume Inj. : 2 µl
 Signal #1 Phase : ZB-MR1 Signal #2 Phase: ZB-MR2
 Signal #1 Info : 30Mx0.32mmx 0.50µ Signal #2 Info : 30M x 0.32mm x 0.25µm



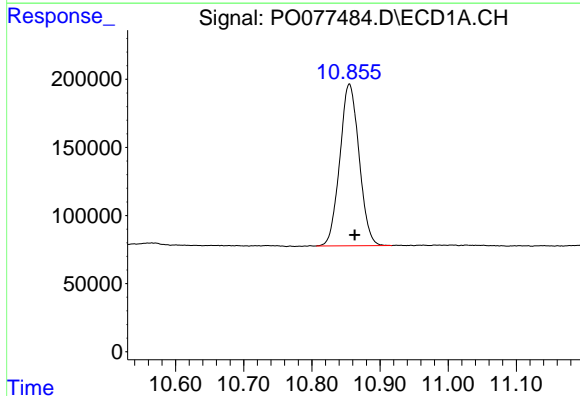


#1 Tetrachloro-m-xylene
 R.T.: 4.890 min
 Delta R.T.: -0.004 min
 Response: 2148727
 Conc: 19.58 ng/ml

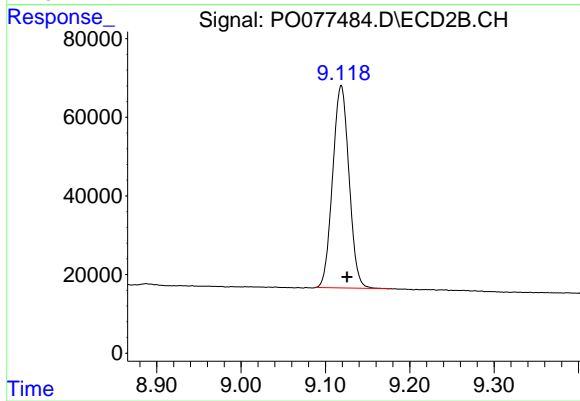
Instrument :
 ECD_O
 ClientSampled :
 PB136117BL



#1 Tetrachloro-m-xylene
 R.T.: 3.884 min
 Delta R.T.: -0.008 min
 Response: 1055766
 Conc: 18.91 ng/ml



#2 Decachlorobiphenyl
 R.T.: 10.855 min
 Delta R.T.: -0.008 min
 Response: 2335428
 Conc: 21.24 ng/ml



#2 Decachlorobiphenyl
 R.T.: 9.119 min
 Delta R.T.: -0.007 min
 Response: 694268
 Conc: 20.41 ng/ml