

Data Path : Z:\pestpcbsrv\HPCHEM1\ECD\_0\Data\P0050321\  
 Data File : P0077489.D  
 Signal(s) : Signal #1: ECD1A.CH Signal #2: ECD2B.CH  
 Acq On : 03 May 2021 14:35  
 Operator : DD\AJ  
 Sample : M2236-02  
 Misc :  
 ALS Vial : 15 Sample Multiplier: 1

**Instrument :**  
 ECD\_0  
**ClientSampled :**  
 11991

**Manual Integrations**  
**APPROVED**  
 Ankita  
 5/4/2021 10:24:00 AM

Integration File signal 1: autoint1.e  
 Integration File signal 2: autoint2.e  
 Quant Time: May 03 16:45:05 2021  
 Quant Method : Z:\pestpcbsrv\HPCHEM1\ECD\_0\methods\P0042821.M  
 Quant Title : GC EXTRACTABLES  
 QLast Update : Thu Apr 29 05:54:04 2021  
 Response via : Initial Calibration  
 Integrator: ChemStation 6890 Scale Mode: Small noise peaks clipped

Volume Inj. : 2 µl  
 Signal #1 Phase : ZB-MR1 Signal #2 Phase: ZB-MR2  
 Signal #1 Info : 30Mx0.32mmx 0.50µ Signal #2 Info : 30M x 0.32mm x 0.25µm

Compound	RT#1	RT#2	Resp#1	Resp#2	ng/ml	ng/ml
-----						
System Monitoring Compounds						
1) SA Tetrachlo...	4.889	3.883	2476044	1201194	22.564	21.518
2) SA Decachlor...	10.856	9.117	2119251	611163	19.273	17.965

Target Compounds

-----  
 (f)=RT Delta > 1/2 Window (#)=Amounts differ by > 25% (m)=manual int.

Data Path : Z:\pestpcbsrv\HPCHEM1\ECD\_0\Data\P0050321\  
 Data File : P0077489.D  
 Signal(s) : Signal #1: ECD1A.CH Signal #2: ECD2B.CH  
 Acq On : 03 May 2021 14:35  
 Operator : DD\AJ  
 Sample : M2236-02  
 Misc :  
 ALS Vial : 15 Sample Multiplier: 1

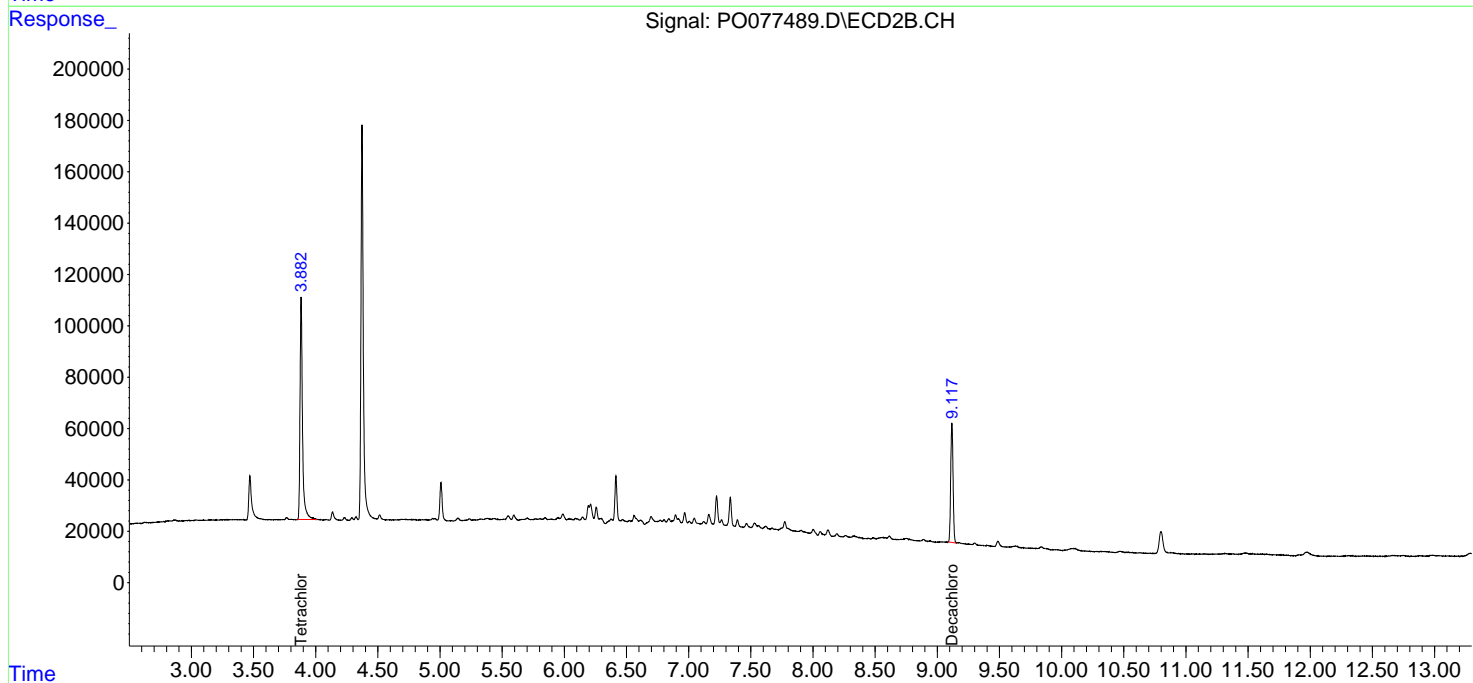
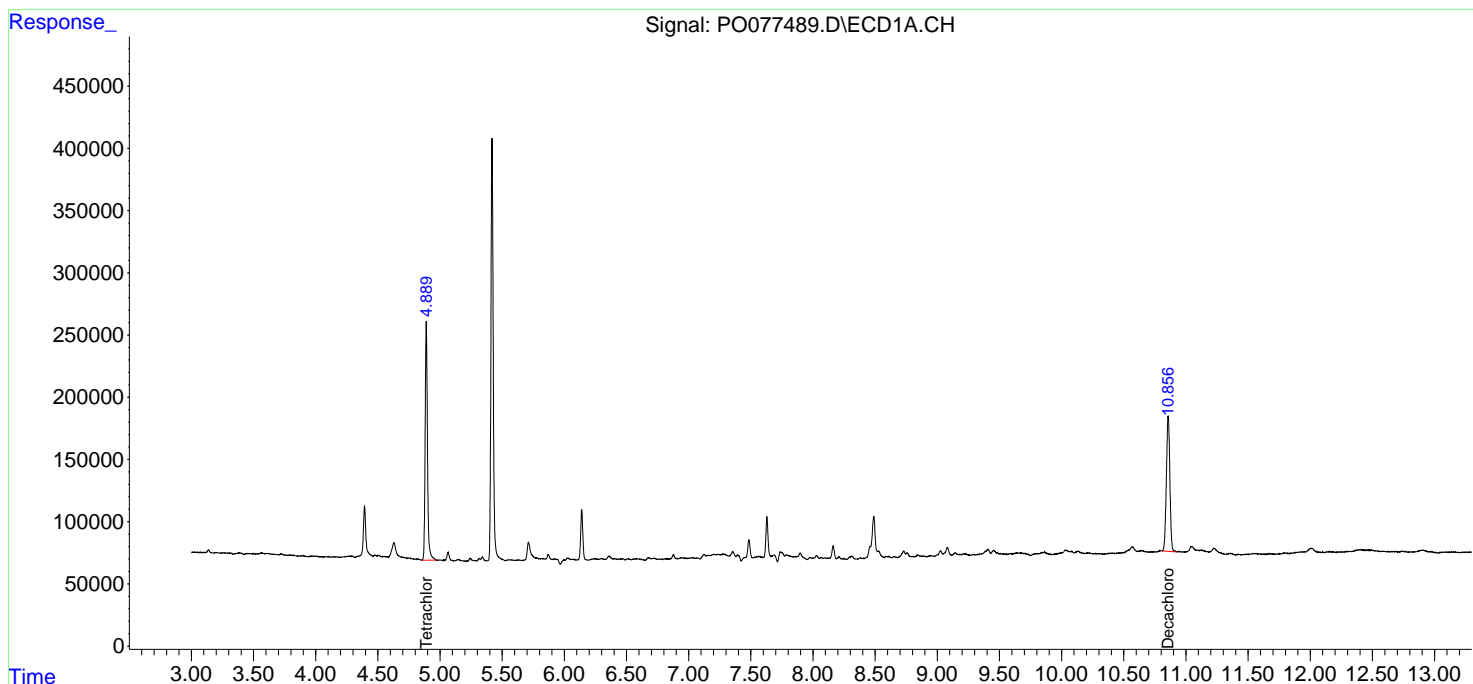
Instrument :  
 ECD\_O  
 ClientSampled :  
 11991

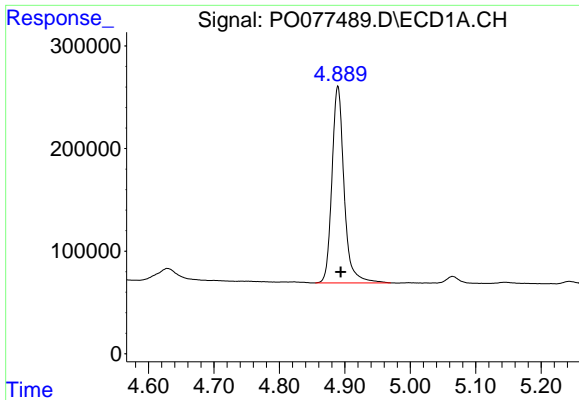
Manual Integrations  
 APPROVED

Ankita  
 5/4/2021 10:24:00 AM

Integration File signal 1: autoint1.e  
 Integration File signal 2: autoint2.e  
 Quant Time: May 03 16:45:05 2021  
 Quant Method : Z:\pestpcbsrv\HPCHEM1\ECD\_0\methods\P0042821.M  
 Quant Title : GC EXTRACTABLES  
 QLast Update : Thu Apr 29 05:54:04 2021  
 Response via : Initial Calibration  
 Integrator: ChemStation 6890 Scale Mode: Small noise peaks clipped

Volume Inj. : 2 µl  
 Signal #1 Phase : ZB-MR1 Signal #2 Phase: ZB-MR2  
 Signal #1 Info : 30Mx0.32mmx 0.50µ Signal #2 Info : 30M x 0.32mm x 0.25µm

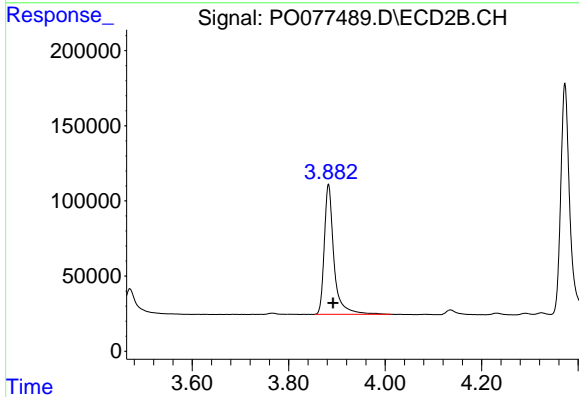




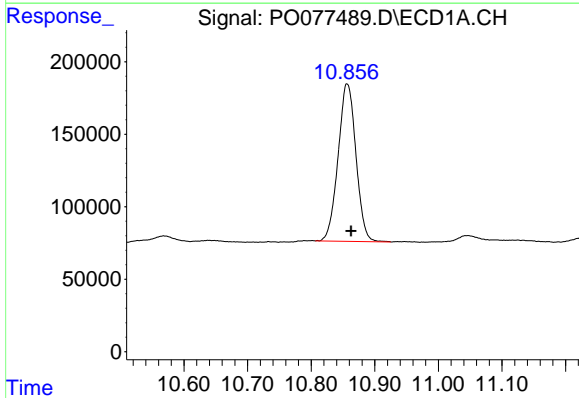
#1 Tetrachloro-m-xylene  
 R.T.: 4.889 min  
 Delta R.T.: -0.005 min  
 Response: 2476044  
 Conc: 22.56 ng/ml

Instrument :  
 ECD\_O  
 ClientSampled :  
 11991

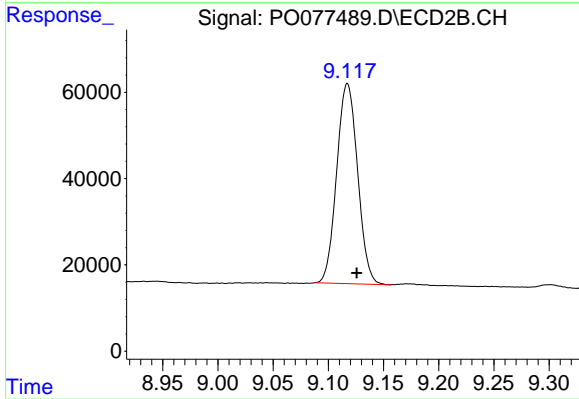
Manual Integrations  
 APPROVED  
 Ankita  
 5/4/2021 10:24:00 AM



#1 Tetrachloro-m-xylene  
 R.T.: 3.883 min  
 Delta R.T.: -0.010 min  
 Response: 1201194  
 Conc: 21.52 ng/ml



#2 Decachlorobiphenyl  
 R.T.: 10.856 min  
 Delta R.T.: -0.006 min  
 Response: 2119251  
 Conc: 19.27 ng/ml



#2 Decachlorobiphenyl  
 R.T.: 9.117 min  
 Delta R.T.: -0.009 min  
 Response: 611163  
 Conc: 17.97 ng/ml