

Data Path : Z:\pestpcbsrv\HPCHEM1\ECD\_0\Data\P0050321\  
 Data File : P0077496.D  
 Signal(s) : Signal #1: ECD1A.CH Signal #2: ECD2B.CH  
 Acq On : 03 May 2021 17:26  
 Operator : DD\AJ  
 Sample : I.BLK  
 Misc :  
 ALS Vial : 2 Sample Multiplier: 1

Instrument :  
 ECD\_0  
 ClientSampleId :  
 I.BLK

Integration File signal 1: autoint1.e  
 Integration File signal 2: autoint2.e  
 Quant Time: May 03 17:49:19 2021  
 Quant Method : Z:\pestpcbsrv\HPCHEM1\ECD\_0\methods\P0042821.M  
 Quant Title : GC EXTRACTABLES  
 QLast Update : Thu Apr 29 05:54:04 2021  
 Response via : Initial Calibration  
 Integrator: ChemStation 6890 Scale Mode: Small noise peaks clipped

Volume Inj. : 2 µl  
 Signal #1 Phase : ZB-MR1 Signal #2 Phase: ZB-MR2  
 Signal #1 Info : 30Mx0.32mmx 0.50µ Signal #2 Info : 30M x 0.32mm x 0.25µm

Compound	RT#1	RT#2	Resp#1	Resp#2	ng/ml	ng/ml
-----						
System Monitoring Compounds						
1) SA Tetrachlo...	4.890	3.883	2504347	1164673	22.822	20.864
2) SA Decachlor...	10.856	9.118	2200798	680482	20.014	20.003

Target Compounds

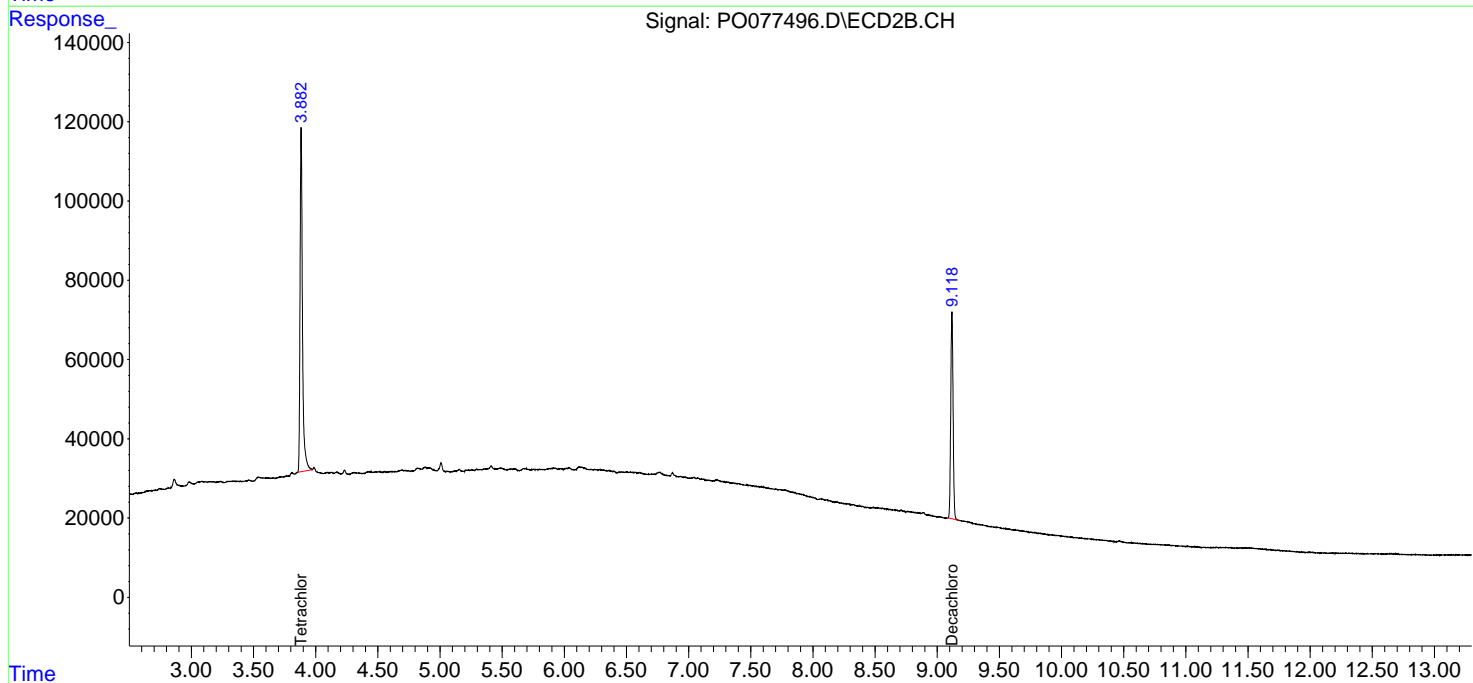
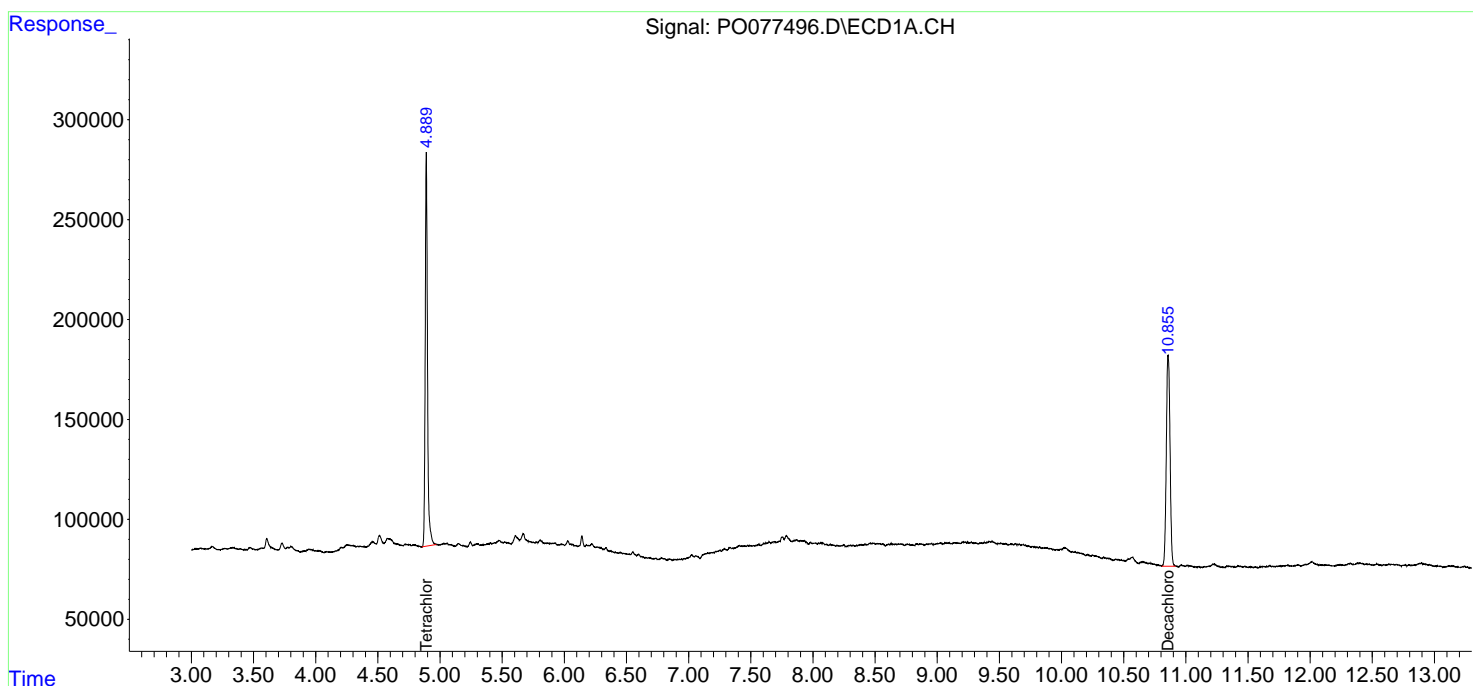
(f)=RT Delta > 1/2 Window (#)=Amounts differ by > 25% (m)=manual int.

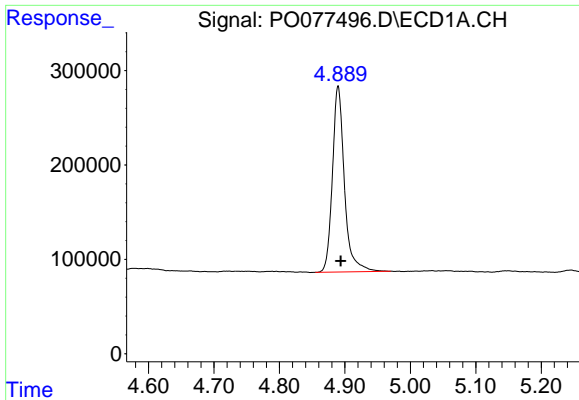
Data Path : Z:\pestpcbsrv\HPCHEM1\ECD\_0\Data\P0050321\  
 Data File : P0077496.D  
 Signal(s) : Signal #1: ECD1A.CH Signal #2: ECD2B.CH  
 Acq On : 03 May 2021 17:26  
 Operator : DD\AJ  
 Sample : I.BLK  
 Misc :  
 ALS Vial : 2 Sample Multiplier: 1

Instrument :  
 ECD\_O  
 ClientSampleId :  
 I.BLK

Integration File signal 1: autoint1.e  
 Integration File signal 2: autoint2.e  
 Quant Time: May 03 17:49:19 2021  
 Quant Method : Z:\pestpcbsrv\HPCHEM1\ECD\_0\methods\P0042821.M  
 Quant Title : GC EXTRACTABLES  
 QLast Update : Thu Apr 29 05:54:04 2021  
 Response via : Initial Calibration  
 Integrator: ChemStation 6890 Scale Mode: Small noise peaks clipped

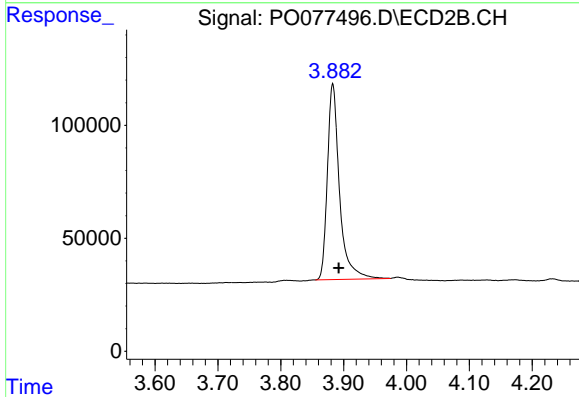
Volume Inj. : 2 µl  
 Signal #1 Phase : ZB-MR1 Signal #2 Phase: ZB-MR2  
 Signal #1 Info : 30Mx0.32mmx 0.50µ Signal #2 Info : 30M x 0.32mm x 0.25µm



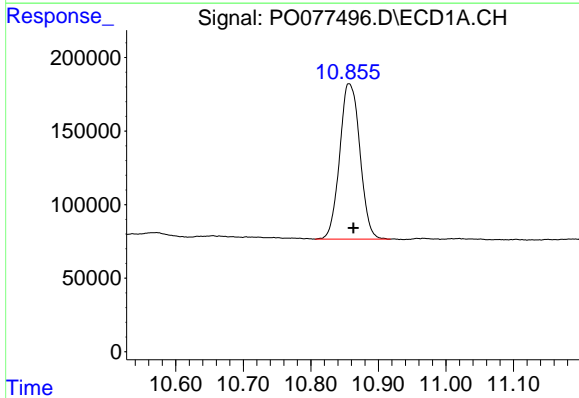


#1 Tetrachloro-m-xylene  
 R.T.: 4.890 min  
 Delta R.T.: -0.004 min  
 Response: 2504347  
 Conc: 22.82 ng/ml

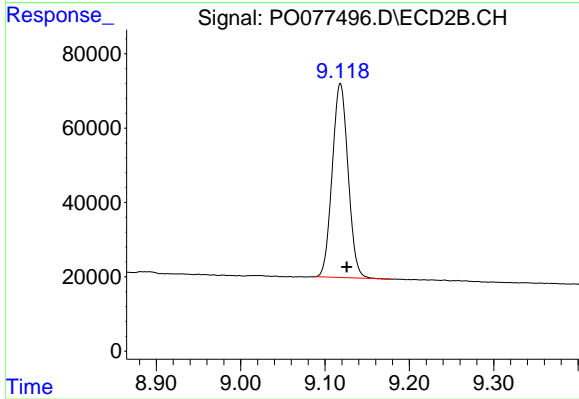
Instrument :  
 ECD\_O  
 ClientSampled :  
 I.BLK



#1 Tetrachloro-m-xylene  
 R.T.: 3.883 min  
 Delta R.T.: -0.010 min  
 Response: 1164673  
 Conc: 20.86 ng/ml



#2 Decachlorobiphenyl  
 R.T.: 10.856 min  
 Delta R.T.: -0.007 min  
 Response: 2200798  
 Conc: 20.01 ng/ml



#2 Decachlorobiphenyl  
 R.T.: 9.118 min  
 Delta R.T.: -0.008 min  
 Response: 680482  
 Conc: 20.00 ng/ml