

Data Path : Z:\pestpcbsrv\HPCHEM1\ECD_0\Data\P0050323\
 Data File : P0094693.D
 Signal(s) : Signal #1: ECD1A.ch Signal #2: ECD2B.ch
 Acq On : 03 May 2023 14:50
 Operator : YP/AJ
 Sample : 02582-01
 Misc :
 ALS Vial : 13 Sample Multiplier: 1

Instrument :
 ECD_0
ClientSampleId :
 HD-02-050223

Manual Integrations
APPROVED
 Reviewed By :Yogesh Patel 05/04/2023
 Supervised By :Ankita Jodhani 05/04/2023

Integration File signal 1: autoint1.e
 Integration File signal 2: autoint2.e
 Quant Time: May 03 21:44:45 2023
 Quant Method : Z:\pestpcbsrv\HPCHEM1\ECD_0\methods\P0042623.M
 Quant Title : GC EXTRACTABLES
 QLast Update : Mon May 01 11:12:50 2023
 Response via : Initial Calibration
 Integrator: ChemStation

Volume Inj. : 2 µl
 Signal #1 Phase : ZB-MR1 Signal #2 Phase: ZB-MR2
 Signal #1 Info : 30Mx0.32mmx 0.50µ Signal #2 Info : 30M x 0.32mm x 0.25µm

Compound	RT#1	RT#2	Resp#1	Resp#2	ng/ml	ng/ml

System Monitoring Compounds						
1) SA Tetrachlo...	4.415	3.617	70347570	24250854	20.423m	18.124
2) SA Decachlor...	10.261	8.635	47384301	19925547	19.525	17.702

Target Compounds

(f)=RT Delta > 1/2 Window (#)=Amounts differ by > 25% (m)=manual int.

Data Path : Z:\pestpcbsrv\HPCHEM1\ECD_O\Data\PO050323\
 Data File : PO094693.D
 Signal(s) : Signal #1: ECD1A.ch Signal #2: ECD2B.ch
 Acq On : 03 May 2023 14:50
 Operator : YP/AJ
 Sample : 02582-01
 Misc :
 ALS Vial : 13 Sample Multiplier: 1

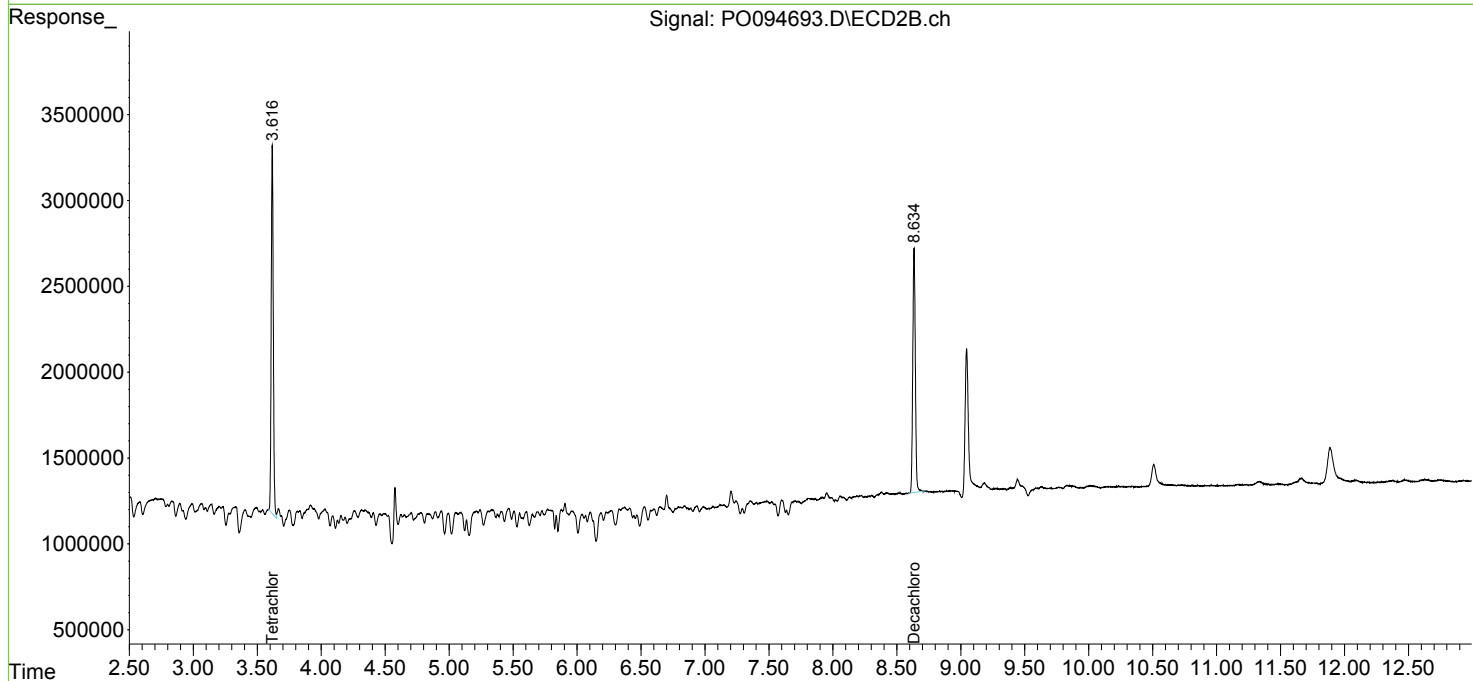
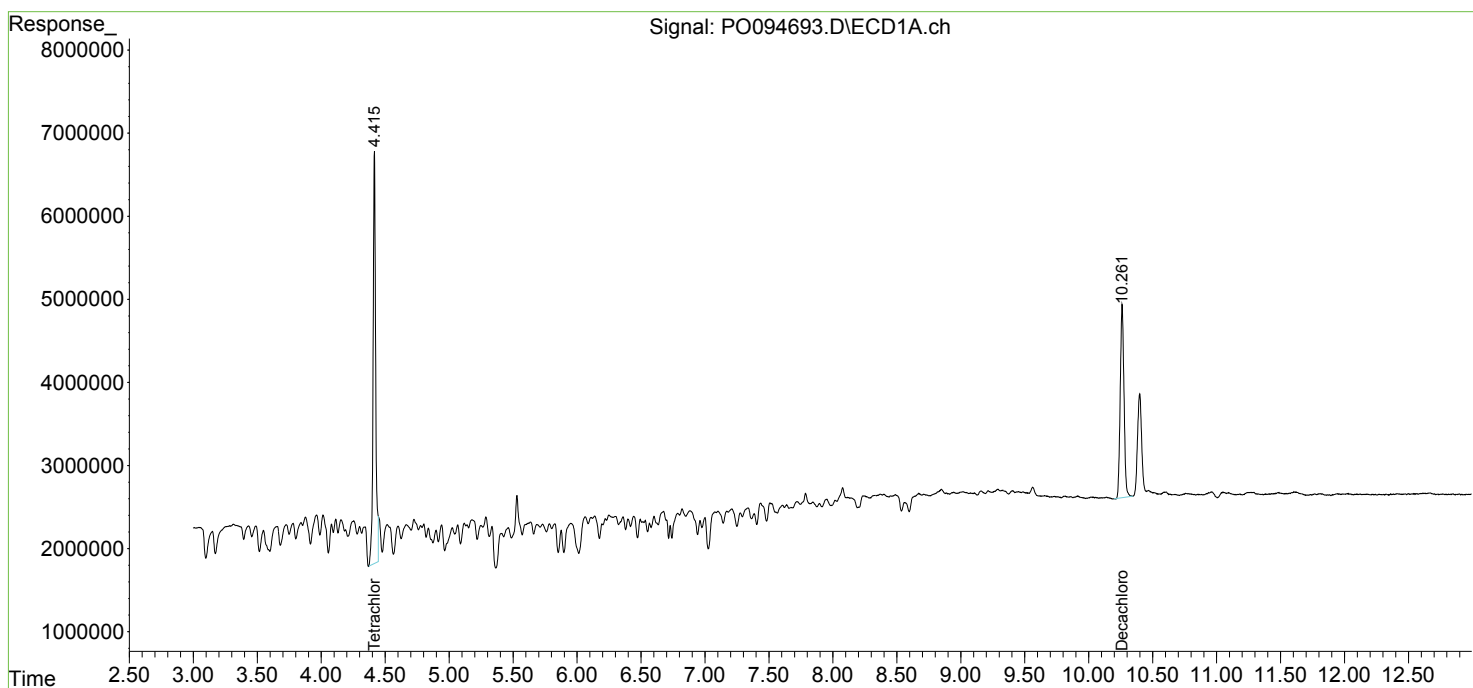
Instrument :
 ECD_O
 ClientSampleId :
 HD-02-050223

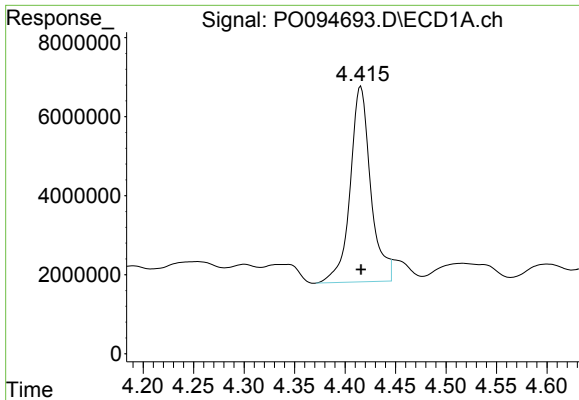
Manual Integrations
 APPROVED

Reviewed By :Yogesh Patel 05/04/2023
 Supervised By :Ankita Jodhani 05/04/2023

Integration File signal 1: autoint1.e
 Integration File signal 2: autoint2.e
 Quant Time: May 03 21:44:45 2023
 Quant Method : Z:\pestpcbsrv\HPCHEM1\ECD_O\methods\PO042623.M
 Quant Title : GC EXTRACTABLES
 QLast Update : Mon May 01 11:12:50 2023
 Response via : Initial Calibration
 Integrator: ChemStation

Volume Inj. : 2 µl
 Signal #1 Phase : ZB-MR1 Signal #2 Phase: ZB-MR2
 Signal #1 Info : 30Mx0.32mmx 0.50µ Signal #2 Info : 30M x 0.32mm x 0.25µm



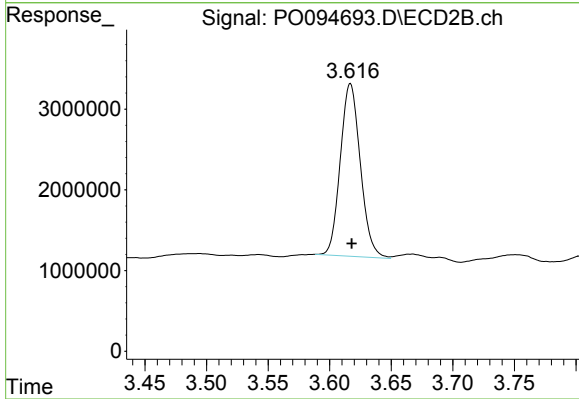


#1 Tetrachloro-m-xylene
 R.T.: 4.415 min
 Delta R.T.: -0.001 min
 Response: 70347570
 Conc: 20.42 ng/ml

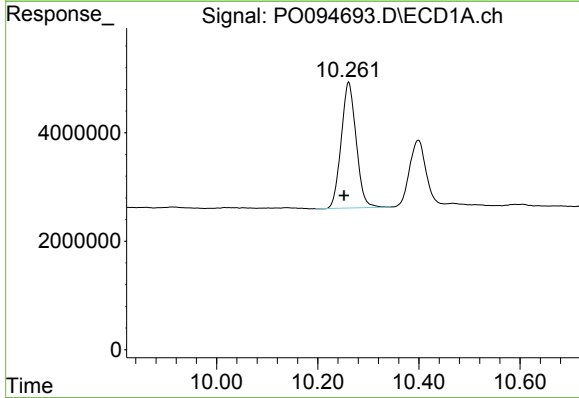
Instrument :
 ECD_O
 ClientSampleId :
 HD-02-050223

Manual Integrations
 APPROVED

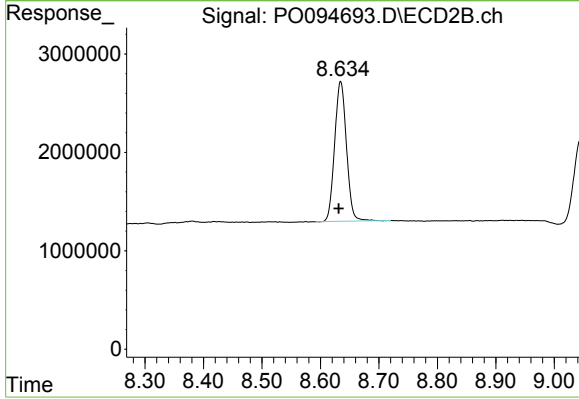
Reviewed By :Yogesh Patel 05/04/2023
 Supervised By :Ankita Jodhani 05/04/2023



#1 Tetrachloro-m-xylene
 R.T.: 3.617 min
 Delta R.T.: -0.001 min
 Response: 24250854
 Conc: 18.12 ng/ml



#2 Decachlorobiphenyl
 R.T.: 10.261 min
 Delta R.T.: 0.009 min
 Response: 47384301
 Conc: 19.53 ng/ml



#2 Decachlorobiphenyl
 R.T.: 8.635 min
 Delta R.T.: 0.003 min
 Response: 19925547
 Conc: 17.70 ng/ml