

Data Path : Z:\pestpcbsrv\HPCHEM1\ECD_0\Data\P0050323\
 Data File : P0094713.D
 Signal(s) : Signal #1: ECD1A.ch Signal #2: ECD2B.ch
 Acq On : 03 May 2023 21:58
 Operator : YP/AJ
 Sample : AR1242CCC500
 Misc :
 ALS Vial : 4 Sample Multiplier: 1

Instrument :
 ECD_0
 ClientSampleId :
 AR1242CCC500

Integration File signal 1: autoint1.e
 Integration File signal 2: autoint2.e
 Quant Time: May 04 04:29:28 2023
 Quant Method : Z:\pestpcbsrv\HPCHEM1\ECD_0\methods\P0042623.M
 Quant Title : GC EXTRACTABLES
 QLast Update : Mon May 01 11:12:50 2023
 Response via : Initial Calibration
 Integrator: ChemStation

Volume Inj. : 2 µl
 Signal #1 Phase : ZB-MR1 Signal #2 Phase: ZB-MR2
 Signal #1 Info : 30Mx0.32mmx 0.50µ Signal #2 Info : 30M x 0.32mm x 0.25µm

Compound	RT#1	RT#2	Resp#1	Resp#2	ng/ml	ng/ml

System Monitoring Compounds						
1) SA Tetrachlo...	4.415	3.617	163.1E6	66183528	47.338	49.462
2) SA Decachlor...	10.260	8.633	115.3E6	50888052	47.512	45.211
Target Compounds						
16) L4 AR-1242-1	5.594	4.698	37808094	16553935	452.591	499.847
17) L4 AR-1242-2	5.616	4.716	56909965	25012775	452.683	507.417
18) L4 AR-1242-3	5.679	4.892	36614724	13279418	449.623	510.377
19) L4 AR-1242-4	5.778	4.977	28410432	14485330	462.599	489.352
20) L4 AR-1242-5	6.523	5.499	32301717	16239286	501.943	513.982

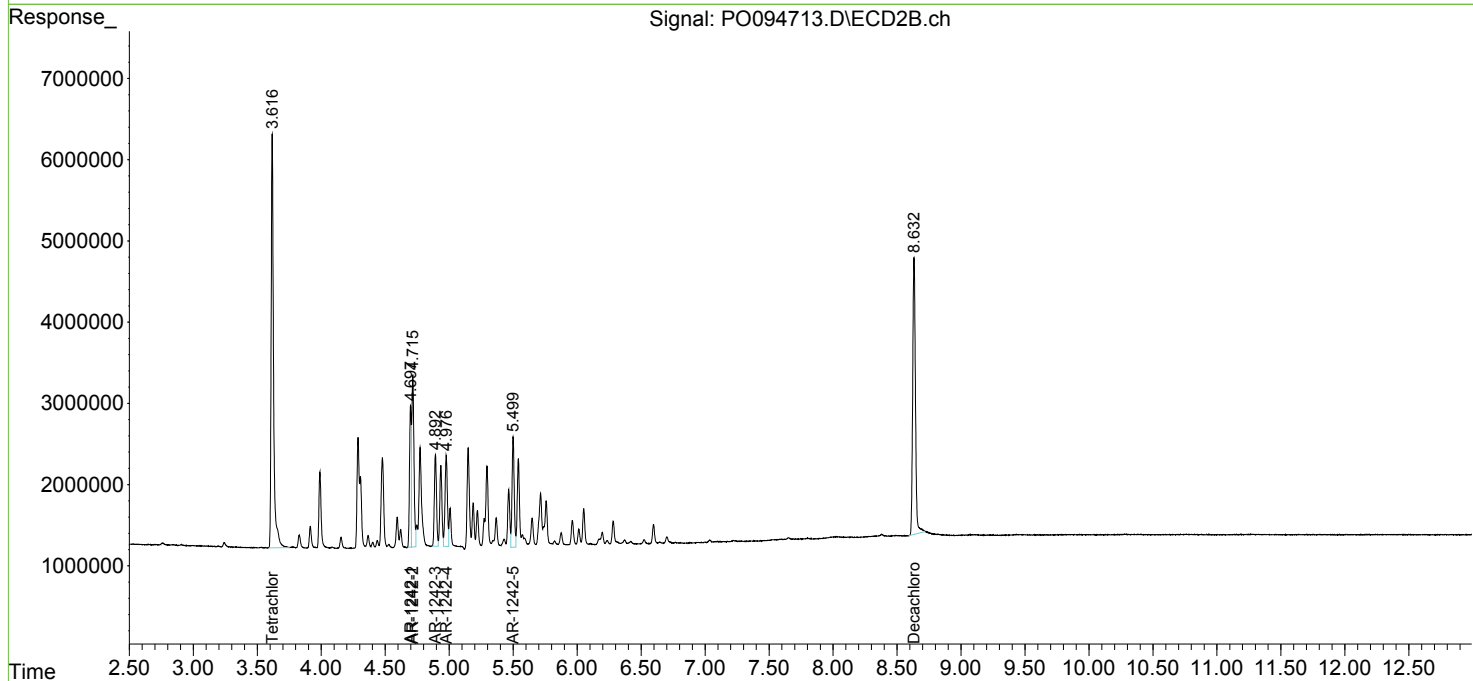
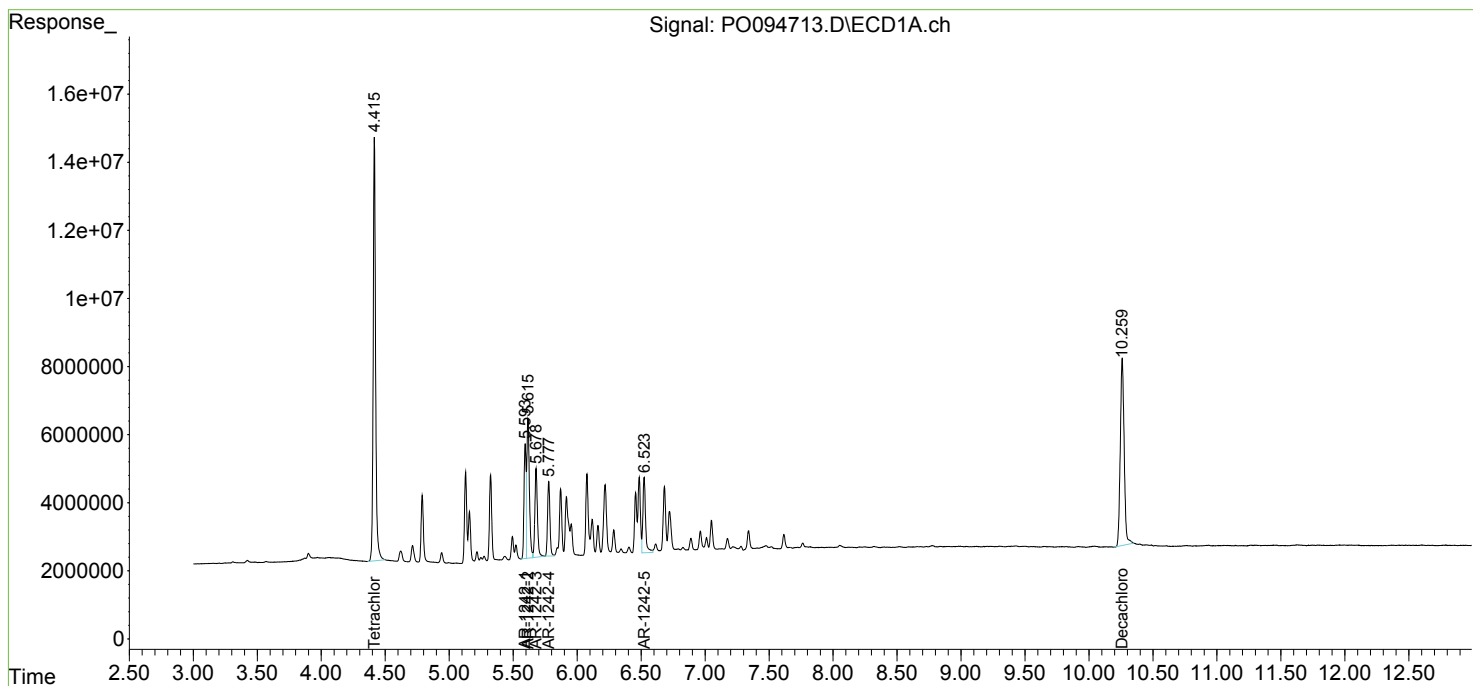
(f)=RT Delta > 1/2 Window (#)=Amounts differ by > 25% (m)=manual int.

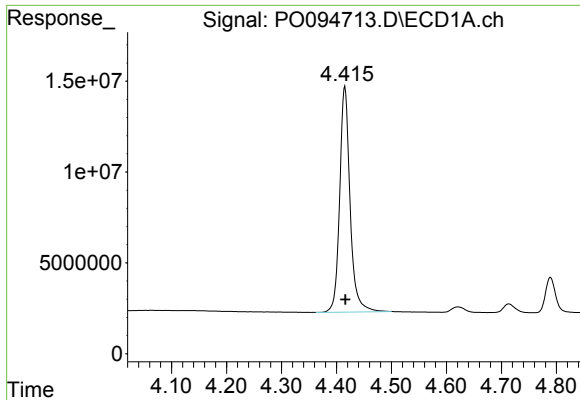
Data Path : Z:\pestpcbsrv\HPCHEM1\ECD_O\Data\PO050323\
 Data File : PO094713.D
 Signal(s) : Signal #1: ECD1A.ch Signal #2: ECD2B.ch
 Acq On : 03 May 2023 21:58
 Operator : YP/AJ
 Sample : AR1242CCC500
 Misc :
 ALS Vial : 4 Sample Multiplier: 1

Instrument :
 ECD_O
 ClientSampleId :
 AR1242CCC500

Integration File signal 1: autoint1.e
 Integration File signal 2: autoint2.e
 Quant Time: May 04 04:29:28 2023
 Quant Method : Z:\pestpcbsrv\HPCHEM1\ECD_O\methods\PO042623.M
 Quant Title : GC EXTRACTABLES
 QLast Update : Mon May 01 11:12:50 2023
 Response via : Initial Calibration
 Integrator: ChemStation

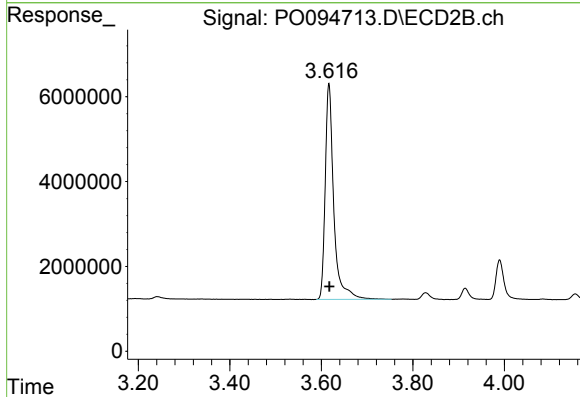
Volume Inj. : 2 µl
 Signal #1 Phase : ZB-MR1 Signal #2 Phase: ZB-MR2
 Signal #1 Info : 30Mx0.32mmx 0.50µ Signal #2 Info : 30M x 0.32mm x 0.25µm



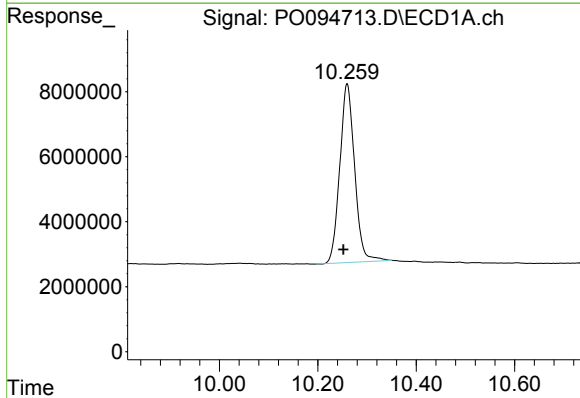


#1 Tetrachloro-m-xylene
 R.T.: 4.415 min
 Delta R.T.: 0.000 min
 Response: 163061656
 Conc: 47.34 ng/ml

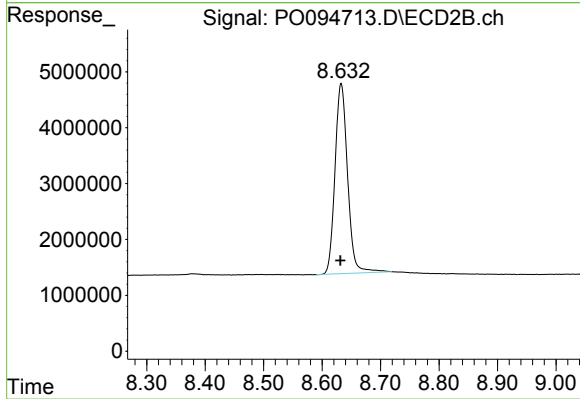
Instrument :
 ECD_O
 ClientSampleId :
 AR1242CCC500



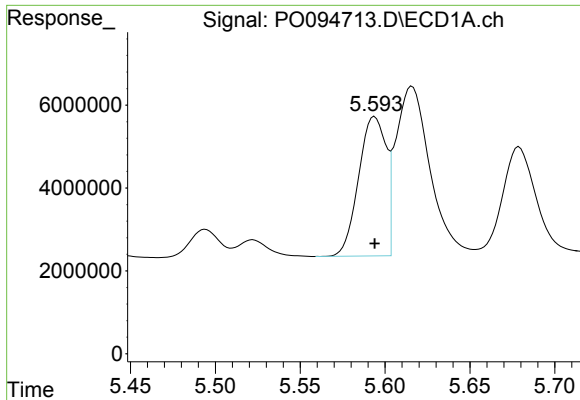
#1 Tetrachloro-m-xylene
 R.T.: 3.617 min
 Delta R.T.: -0.001 min
 Response: 66183528
 Conc: 49.46 ng/ml



#2 Decachlorobiphenyl
 R.T.: 10.260 min
 Delta R.T.: 0.008 min
 Response: 115304456
 Conc: 47.51 ng/ml



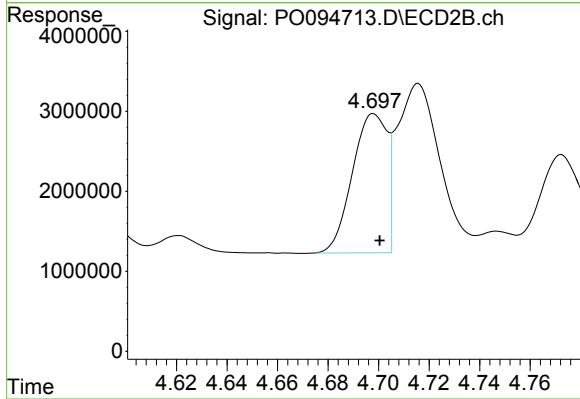
#2 Decachlorobiphenyl
 R.T.: 8.633 min
 Delta R.T.: 0.001 min
 Response: 50888052
 Conc: 45.21 ng/ml



#16 AR-1242-1

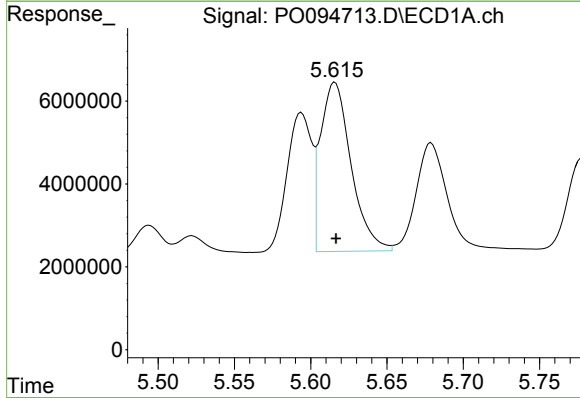
R.T.: 5.594 min
 Delta R.T.: 0.000 min
 Response: 37808094
 Conc: 452.59 ng/ml

Instrument :
 ECD_O
 ClientSampleId :
 AR1242CCC500



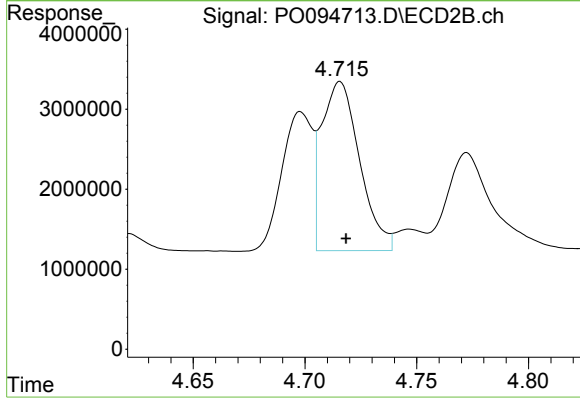
#16 AR-1242-1

R.T.: 4.698 min
 Delta R.T.: -0.002 min
 Response: 16553935
 Conc: 499.85 ng/ml



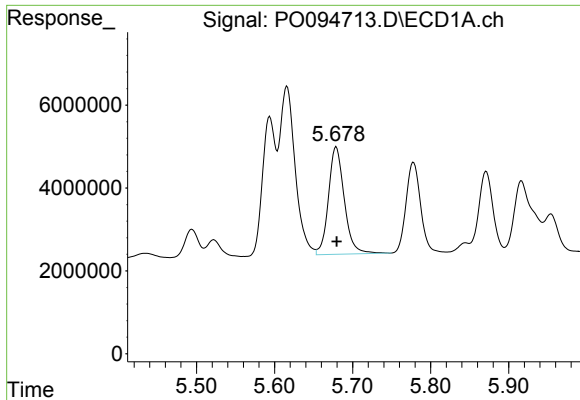
#17 AR-1242-2

R.T.: 5.616 min
 Delta R.T.: 0.000 min
 Response: 56909965
 Conc: 452.68 ng/ml



#17 AR-1242-2

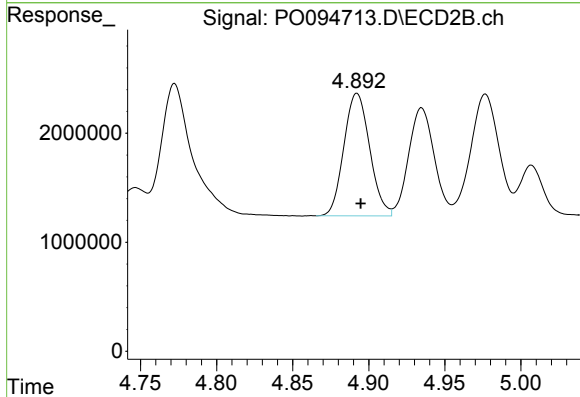
R.T.: 4.716 min
 Delta R.T.: -0.003 min
 Response: 25012775
 Conc: 507.42 ng/ml



#18 AR-1242-3

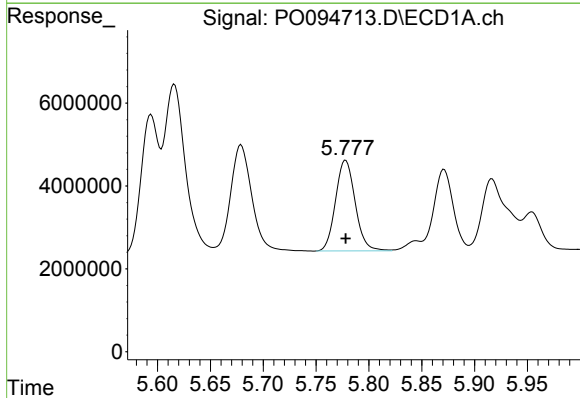
R.T.: 5.679 min
 Delta R.T.: 0.000 min
 Response: 36614724
 Conc: 449.62 ng/ml

Instrument :
 ECD_O
 ClientSampleId :
 AR1242CCC500



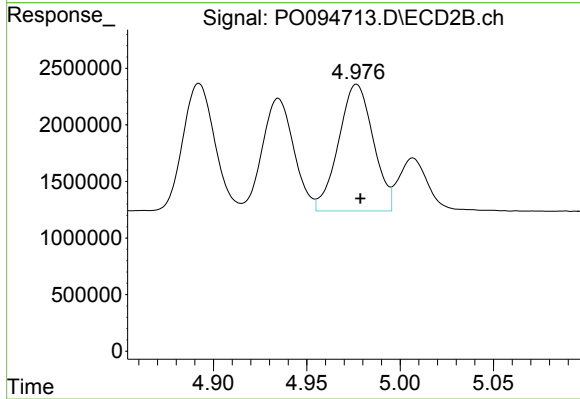
#18 AR-1242-3

R.T.: 4.892 min
 Delta R.T.: -0.002 min
 Response: 13279418
 Conc: 510.38 ng/ml



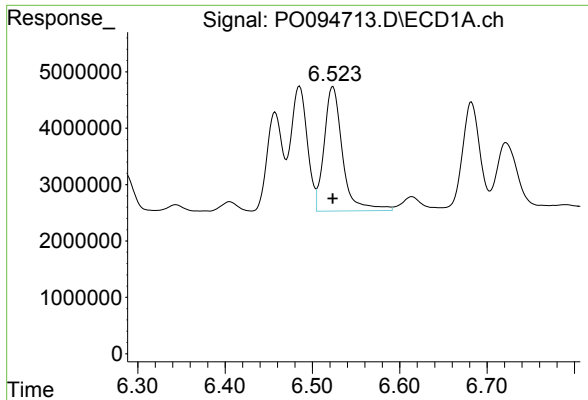
#19 AR-1242-4

R.T.: 5.778 min
 Delta R.T.: 0.000 min
 Response: 28410432
 Conc: 462.60 ng/ml



#19 AR-1242-4

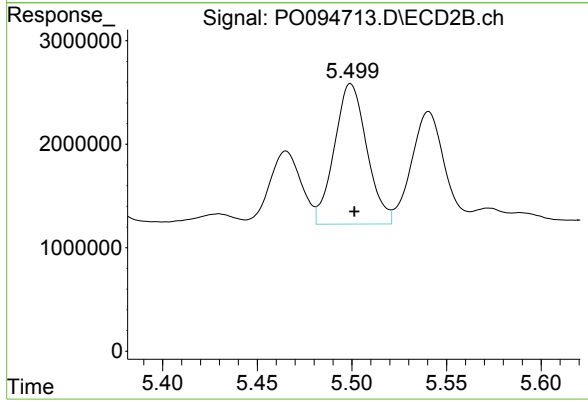
R.T.: 4.977 min
 Delta R.T.: -0.002 min
 Response: 14485330
 Conc: 489.35 ng/ml



#20 AR-1242-5

R.T.: 6.523 min
Delta R.T.: 0.000 min
Response: 32301717
Conc: 501.94 ng/ml

Instrument :
ECD_O
ClientSampleId :
AR1242CCC500



#20 AR-1242-5

R.T.: 5.499 min
Delta R.T.: -0.002 min
Response: 16239286
Conc: 513.98 ng/ml