

Data Path : Z:\pestpcbsrv\HPCHEM1\ECD\_0\Data\P0050423\  
 Data File : P0094731.D  
 Signal(s) : Signal #1: ECD1A.ch Signal #2: ECD2B.ch  
 Acq On : 04 May 2023 13:41  
 Operator : YP/AJ  
 Sample : 02603-01  
 Misc :  
 ALS Vial : 12 Sample Multiplier: 1

**Instrument :**  
 ECD\_0  
**ClientSampleId :**  
 BUR-SOILCOMP

**Manual Integrations**  
**APPROVED**

Reviewed By :Yogesh Patel 05/05/2023  
 Supervised By :Ankita Jodhani 05/05/2023

Integration File signal 1: autoint1.e  
 Integration File signal 2: autoint2.e  
 Quant Time: May 04 18:22:58 2023  
 Quant Method : Z:\pestpcbsrv\HPCHEM1\ECD\_0\methods\P0042623.M  
 Quant Title : GC EXTRACTABLES  
 QLast Update : Mon May 01 11:12:50 2023  
 Response via : Initial Calibration  
 Integrator: ChemStation

Volume Inj. : 2 µl  
 Signal #1 Phase : ZB-MR1 Signal #2 Phase: ZB-MR2  
 Signal #1 Info : 30Mx0.32mmx 0.50µ Signal #2 Info : 30M x 0.32mm x 0.25µm

Compound	RT#1	RT#2	Resp#1	Resp#2	ng/ml	ng/ml
-----						
System Monitoring Compounds						
1) SA Tetrachlo...	4.415	3.616	35191156	14261316	10.216	10.658
2) SA Decachlor...	10.256	8.629	41673886	17949224	17.172	15.947
Target Compounds						
31) L7 AR-1260-1	7.214	6.180	3092884	1642640	20.860	23.333
32) L7 AR-1260-2	7.475	6.370	5098408	2132370	31.440	26.673
33) L7 AR-1260-3	7.838	6.522	2453486	1717322	18.767	22.836
34) L7 AR-1260-4	8.055	6.996	5144454	703241	36.790	11.234 #
35) L7 AR-1260-5	8.396	7.239	4135820	1865885	16.905	14.804m
-----						

(f)=RT Delta > 1/2 Window (#)=Amounts differ by > 25% (m)=manual int.

Data Path : Z:\pestpcbsrv\HPCHEM1\ECD\_0\Data\P0050423\  
 Data File : P0094731.D  
 Signal(s) : Signal #1: ECD1A.ch Signal #2: ECD2B.ch  
 Acq On : 04 May 2023 13:41  
 Operator : YP/AJ  
 Sample : 02603-01  
 Misc :  
 ALS Vial : 12 Sample Multiplier: 1

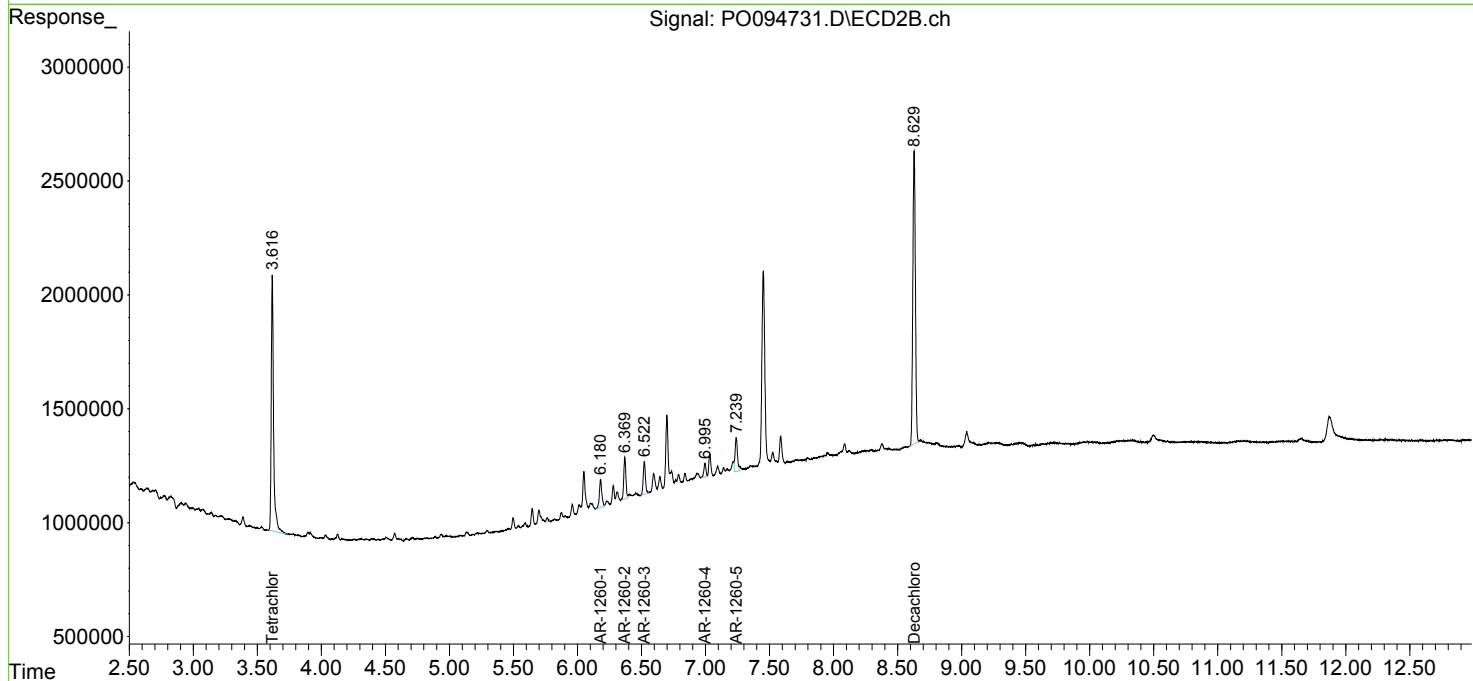
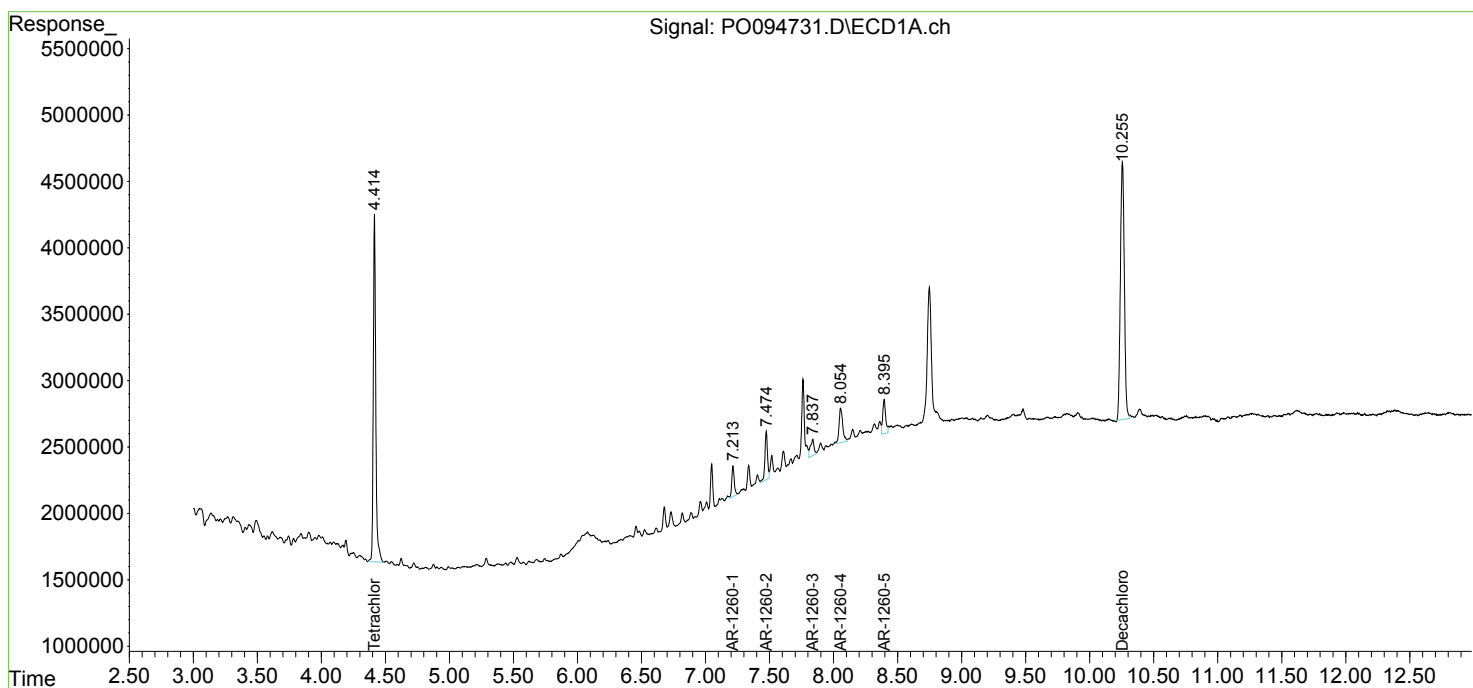
Instrument :  
 ECD\_0  
 ClientSampleId :  
 BUR-SOILCOMP

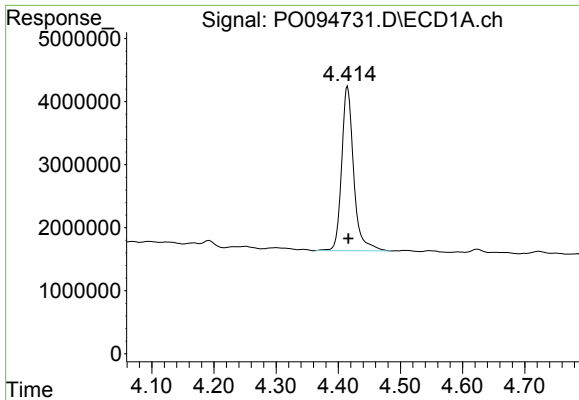
Manual Integrations  
 APPROVED

Reviewed By :Yogesh Patel 05/05/2023  
 Supervised By :Ankita Jodhani 05/05/2023

Integration File signal 1: autoint1.e  
 Integration File signal 2: autoint2.e  
 Quant Time: May 04 18:22:58 2023  
 Quant Method : Z:\pestpcbsrv\HPCHEM1\ECD\_0\methods\P0042623.M  
 Quant Title : GC EXTRACTABLES  
 QLast Update : Mon May 01 11:12:50 2023  
 Response via : Initial Calibration  
 Integrator: ChemStation

Volume Inj. : 2 µl  
 Signal #1 Phase : ZB-MR1 Signal #2 Phase: ZB-MR2  
 Signal #1 Info : 30Mx0.32mmx 0.50µ Signal #2 Info : 30M x 0.32mm x 0.25µm



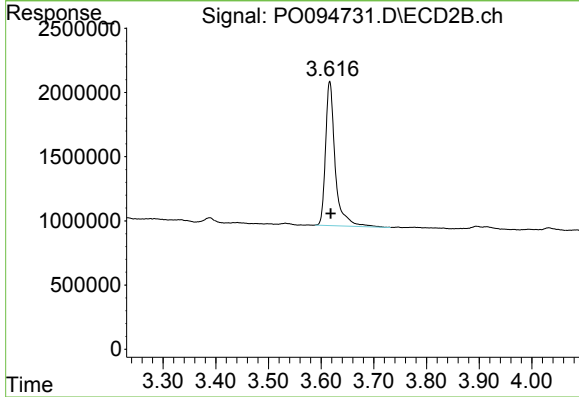


#1 Tetrachloro-m-xylene  
 R.T.: 4.415 min  
 Delta R.T.: -0.001 min  
 Response: 35191156  
 Conc: 10.22 ng/ml

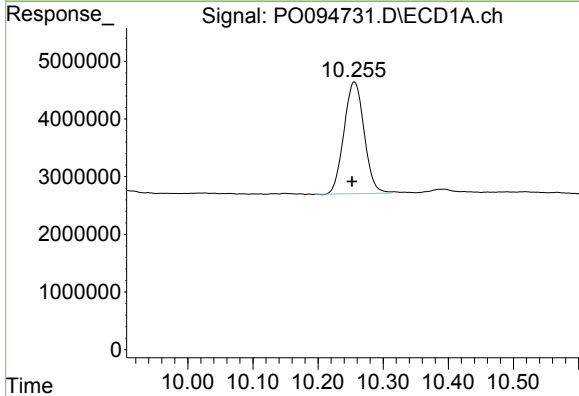
Instrument :  
 ECD\_O  
 ClientSampleId :  
 BUR-SOILCOMP

Manual Integrations  
 APPROVED

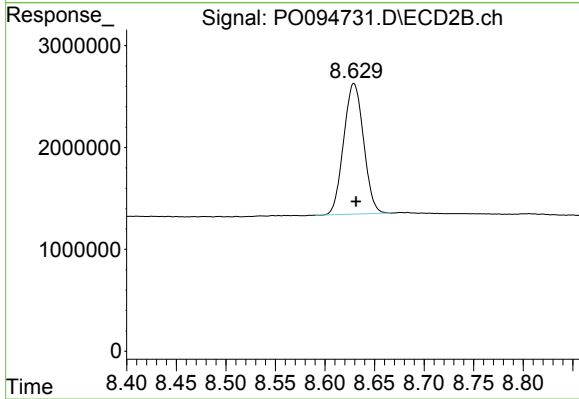
Reviewed By :Yogesh Patel 05/05/2023  
 Supervised By :Ankita Jodhani 05/05/2023



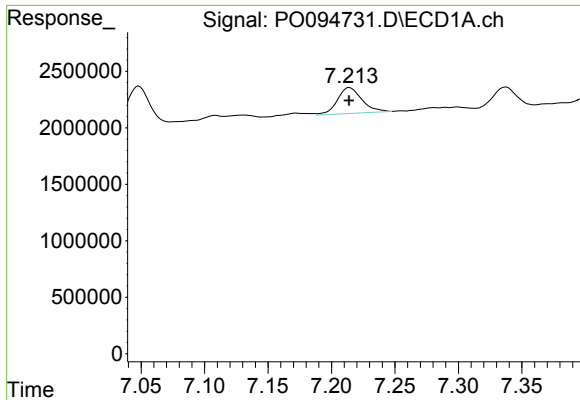
#1 Tetrachloro-m-xylene  
 R.T.: 3.616 min  
 Delta R.T.: -0.002 min  
 Response: 14261316  
 Conc: 10.66 ng/ml



#2 Decachlorobiphenyl  
 R.T.: 10.256 min  
 Delta R.T.: 0.004 min  
 Response: 41673886  
 Conc: 17.17 ng/ml



#2 Decachlorobiphenyl  
 R.T.: 8.629 min  
 Delta R.T.: -0.002 min  
 Response: 17949224  
 Conc: 15.95 ng/ml



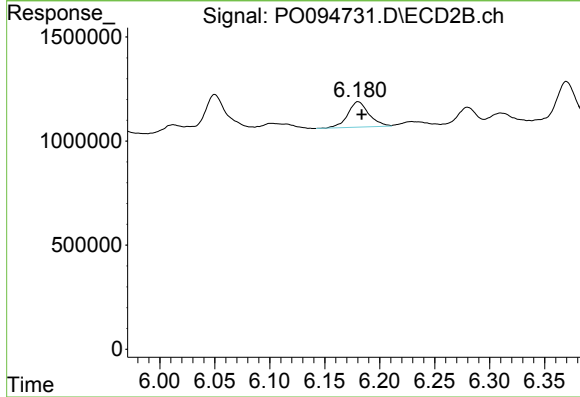
#31 AR-1260-1

R.T.: 7.214 min  
 Delta R.T.: 0.000 min  
 Response: 3092884  
 Conc: 20.86 ng/ml

Instrument : ECD\_O  
 ClientSampleId : BUR-SOILCOMP

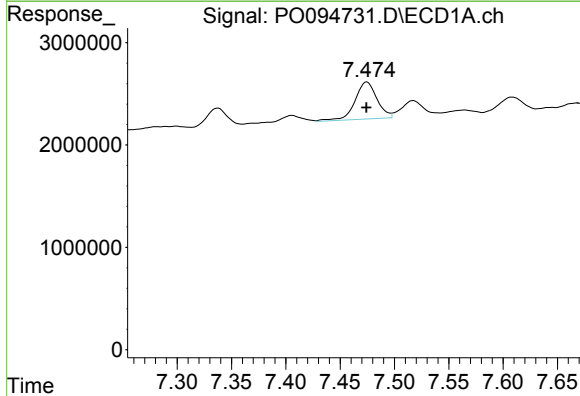
Manual Integrations  
 APPROVED

Reviewed By :Yogesh Patel 05/05/2023  
 Supervised By :Ankita Jodhani 05/05/2023



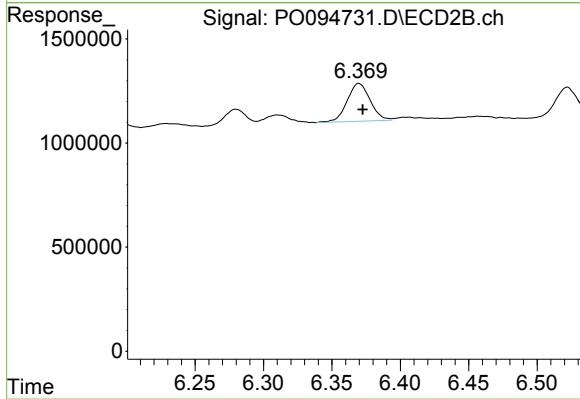
#31 AR-1260-1

R.T.: 6.180 min  
 Delta R.T.: -0.003 min  
 Response: 1642640  
 Conc: 23.33 ng/ml



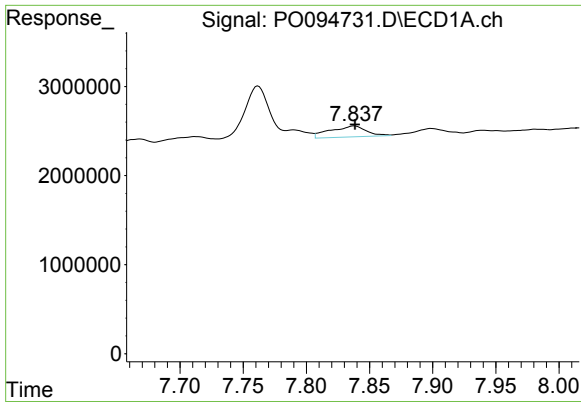
#32 AR-1260-2

R.T.: 7.475 min  
 Delta R.T.: 0.000 min  
 Response: 5098408  
 Conc: 31.44 ng/ml



#32 AR-1260-2

R.T.: 6.370 min  
 Delta R.T.: -0.003 min  
 Response: 2132370  
 Conc: 26.67 ng/ml



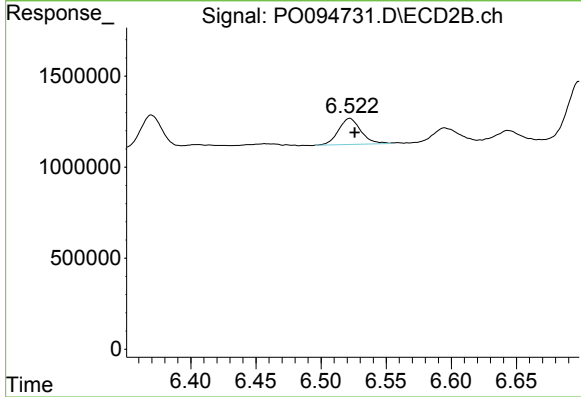
#33 AR-1260-3

R.T.: 7.838 min  
 Delta R.T.: 0.000 min  
 Response: 2453486  
 Conc: 18.77 ng/ml

Instrument :  
 ECD\_O  
 ClientSampleId :  
 BUR-SOILCOMP

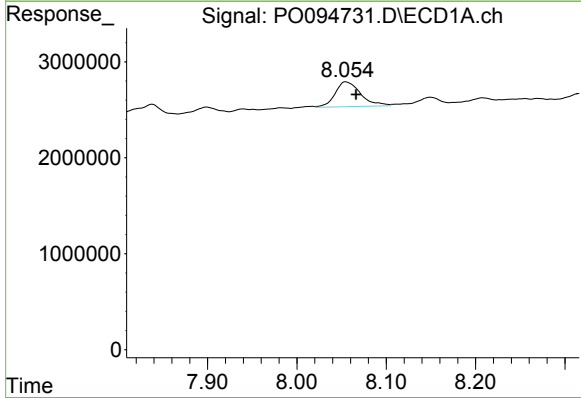
Manual Integrations  
 APPROVED

Reviewed By :Yogesh Patel 05/05/2023  
 Supervised By :Ankita Jodhani 05/05/2023



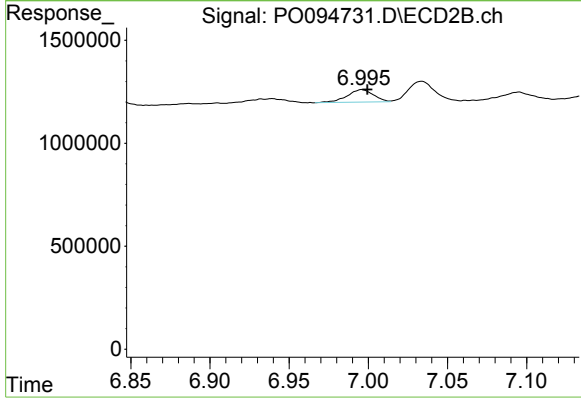
#33 AR-1260-3

R.T.: 6.522 min  
 Delta R.T.: -0.004 min  
 Response: 1717322  
 Conc: 22.84 ng/ml



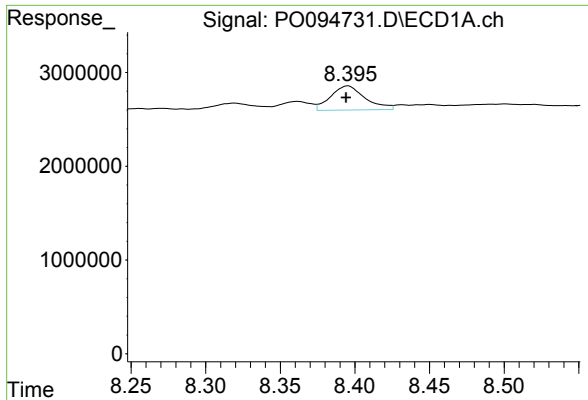
#34 AR-1260-4

R.T.: 8.055 min  
 Delta R.T.: -0.012 min  
 Response: 5144454  
 Conc: 36.79 ng/ml



#34 AR-1260-4

R.T.: 6.996 min  
 Delta R.T.: -0.003 min  
 Response: 703241  
 Conc: 11.23 ng/ml



#35 AR-1260-5

R.T.: 8.396 min  
 Delta R.T.: 0.002 min  
 Response: 4135820  
 Conc: 16.90 ng/ml

Instrument :

ECD\_O

ClientSampleId :

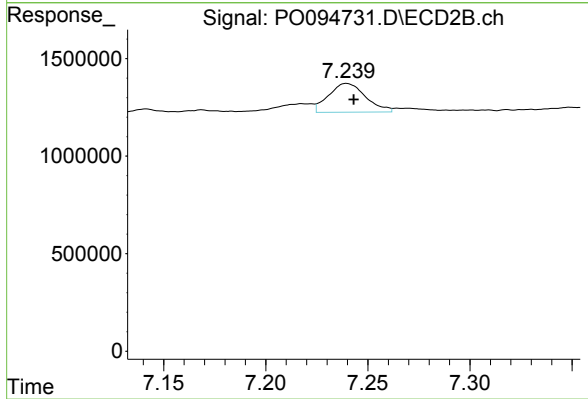
BUR-SOILCOMP

**Manual Integrations**

**APPROVED**

Reviewed By :Yogesh Patel 05/05/2023

Supervised By :Ankita Jodhani 05/05/2023



#35 AR-1260-5

R.T.: 7.239 min  
 Delta R.T.: -0.004 min  
 Response: 1865885  
 Conc: 14.80 ng/ml m