

Data Path : Z:\pestpcbsrv\HPCHEM1\ECD_0\Data\P0050521\
 Data File : P0077530.D
 Signal(s) : Signal #1: ECD1A.CH Signal #2: ECD2B.CH
 Acq On : 05 May 2021 11:28
 Operator : DD\AJ
 Sample : PB136157BL
 Misc :
 ALS Vial : 9 Sample Multiplier: 1

Instrument :
 ECD_0
 ClientSampleId :
 PB136157BL

Integration File signal 1: autoint1.e
 Integration File signal 2: autoint2.e
 Quant Time: May 05 12:31:44 2021
 Quant Method : Z:\pestpcbsrv\HPCHEM1\ECD_0\methods\P0042821.M
 Quant Title : GC EXTRACTABLES
 QLast Update : Thu Apr 29 05:54:04 2021
 Response via : Initial Calibration
 Integrator: ChemStation 6890 Scale Mode: Small noise peaks clipped

Volume Inj. : 2 µl
 Signal #1 Phase : ZB-MR1 Signal #2 Phase: ZB-MR2
 Signal #1 Info : 30Mx0.32mmx 0.50µ Signal #2 Info : 30M x 0.32mm x 0.25µm

Compound	RT#1	RT#2	Resp#1	Resp#2	ng/ml	ng/ml

System Monitoring Compounds						
1) SA Tetrachlo...	4.894	3.887	1819942	1064735	16.585	19.073
2) SA Decachlor...	10.859	9.120	1954753	567680	17.777	16.687

Target Compounds

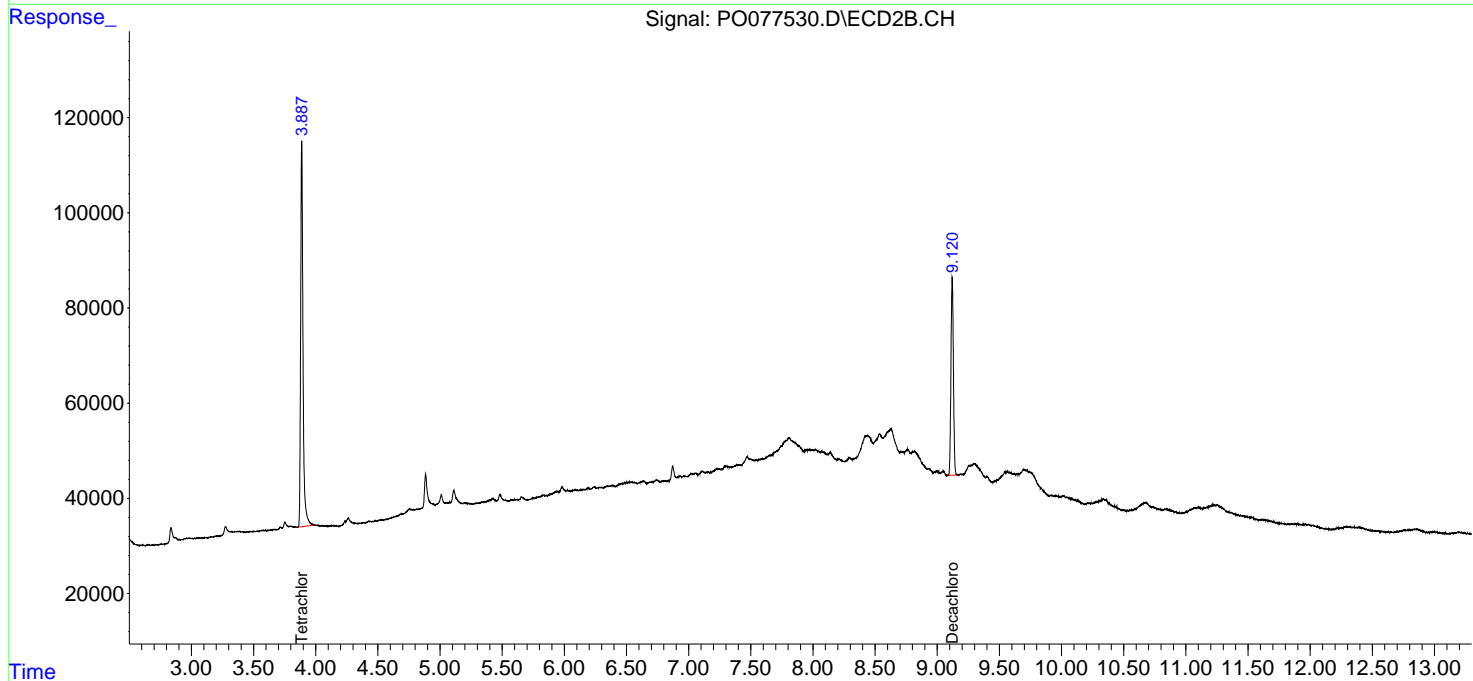
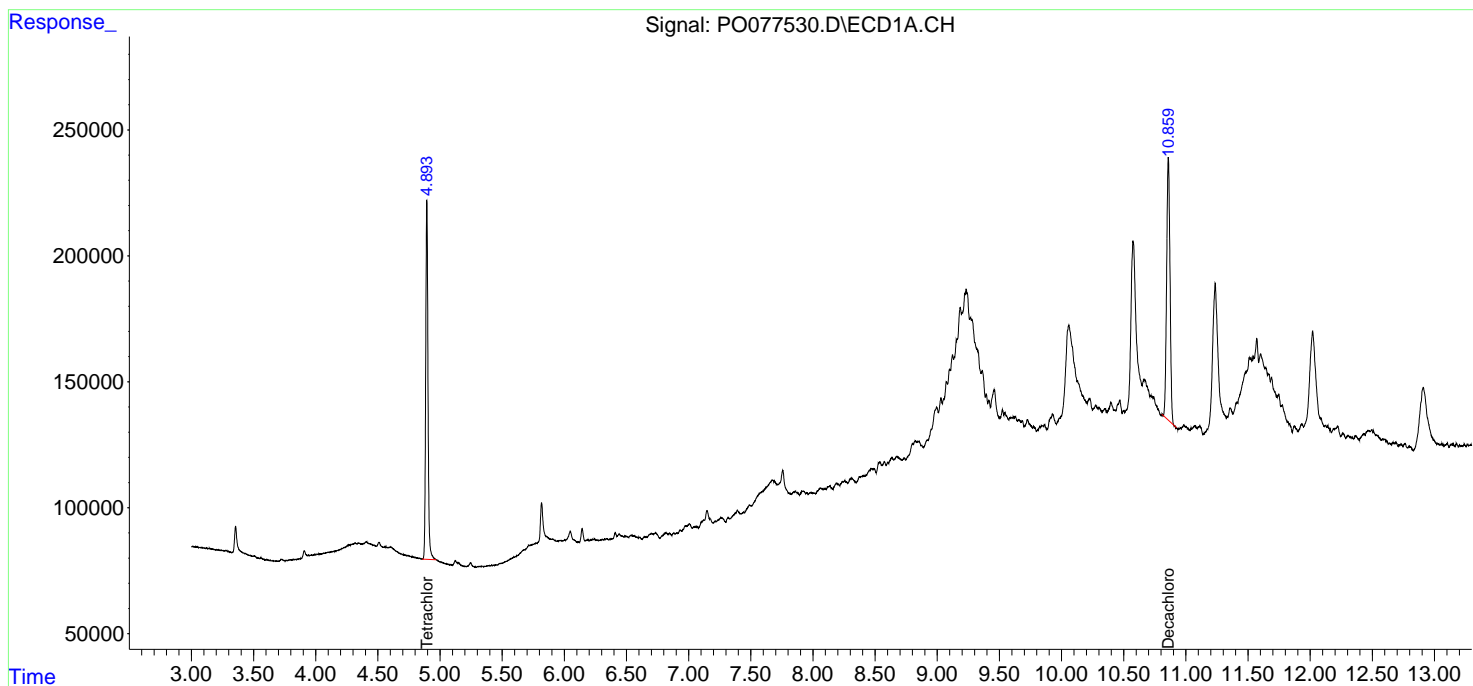
(f)=RT Delta > 1/2 Window (#)=Amounts differ by > 25% (m)=manual int.

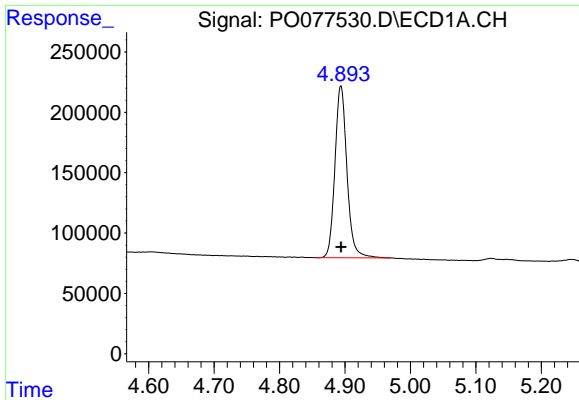
Data Path : Z:\pestpcbsrv\HPCHEM1\ECD_0\Data\P0050521\
 Data File : P0077530.D
 Signal(s) : Signal #1: ECD1A.CH Signal #2: ECD2B.CH
 Acq On : 05 May 2021 11:28
 Operator : DD\AJ
 Sample : PB136157BL
 Misc :
 ALS Vial : 9 Sample Multiplier: 1

Instrument :
 ECD_O
 ClientSampled :
 PB136157BL

Integration File signal 1: autoint1.e
 Integration File signal 2: autoint2.e
 Quant Time: May 05 12:31:44 2021
 Quant Method : Z:\pestpcbsrv\HPCHEM1\ECD_0\methods\P0042821.M
 Quant Title : GC EXTRACTABLES
 QLast Update : Thu Apr 29 05:54:04 2021
 Response via : Initial Calibration
 Integrator: ChemStation 6890 Scale Mode: Small noise peaks clipped

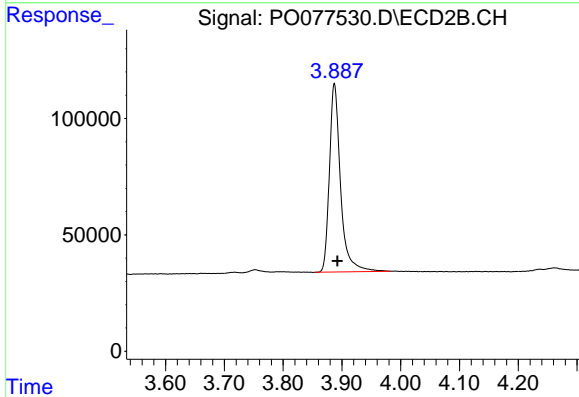
Volume Inj. : 2 µl
 Signal #1 Phase : ZB-MR1 Signal #2 Phase: ZB-MR2
 Signal #1 Info : 30Mx0.32mmx 0.50µ Signal #2 Info : 30M x 0.32mm x 0.25µm



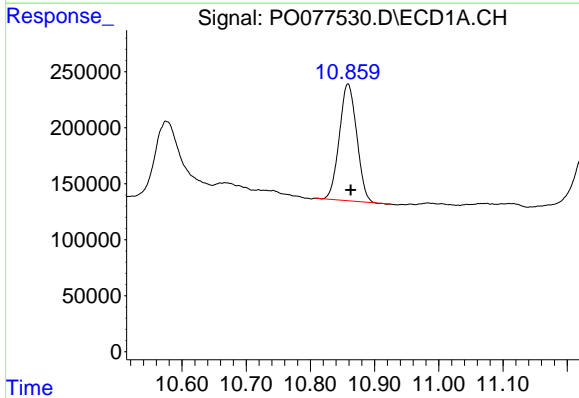


#1 Tetrachloro-m-xylene
 R.T.: 4.894 min
 Delta R.T.: 0.000 min
 Response: 1819942
 Conc: 16.58 ng/ml

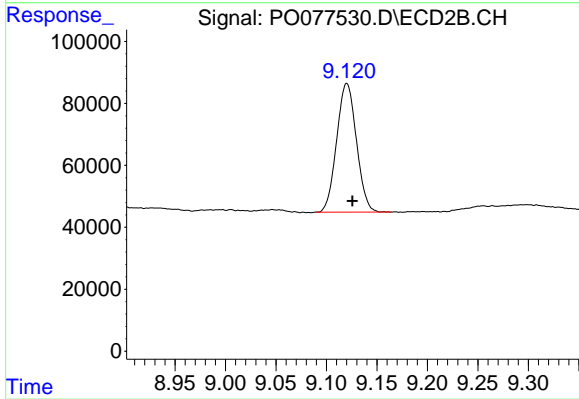
Instrument :
 ECD_O
 ClientSampleId :
 PB136157BL



#1 Tetrachloro-m-xylene
 R.T.: 3.887 min
 Delta R.T.: -0.005 min
 Response: 1064735
 Conc: 19.07 ng/ml



#2 Decachlorobiphenyl
 R.T.: 10.859 min
 Delta R.T.: -0.004 min
 Response: 1954753
 Conc: 17.78 ng/ml



#2 Decachlorobiphenyl
 R.T.: 9.120 min
 Delta R.T.: -0.006 min
 Response: 567680
 Conc: 16.69 ng/ml