

Data Path : Z:\pestpcbsrv\HPCHEM1\ECD_O\Data\P0050523\
 Data File : P0094760.D
 Signal(s) : Signal #1: ECD1A.ch Signal #2: ECD2B.ch
 Acq On : 05 May 2023 10:06
 Operator : YP/AJ
 Sample : PB152564BL
 Misc :
 ALS Vial : 7 Sample Multiplier: 1

Instrument :
 ECD_O
ClientSampleId :
 PB152564BL

Integration File signal 1: autoint1.e
 Integration File signal 2: autoint2.e
 Quant Time: May 05 21:19:21 2023
 Quant Method : Z:\pestpcbsrv\HPCHEM1\ECD_O\methods\P0042623.M
 Quant Title : GC EXTRACTABLES
 QLast Update : Mon May 01 11:12:50 2023
 Response via : Initial Calibration
 Integrator: ChemStation

Volume Inj. : 2 µl
 Signal #1 Phase : ZB-MR1 Signal #2 Phase: ZB-MR2
 Signal #1 Info : 30Mx0.32mmx 0.50µ Signal #2 Info : 30M x 0.32mm x 0.25µm

Compound	RT#1	RT#2	Resp#1	Resp#2	ng/ml	ng/ml

System Monitoring Compounds						
1) SA Tetrachlo...	4.415	3.617	70425675	27693200	20.445	20.697
2) SA Decachlor...	10.251	8.626	55980932	25765513	23.067	22.891

Target Compounds

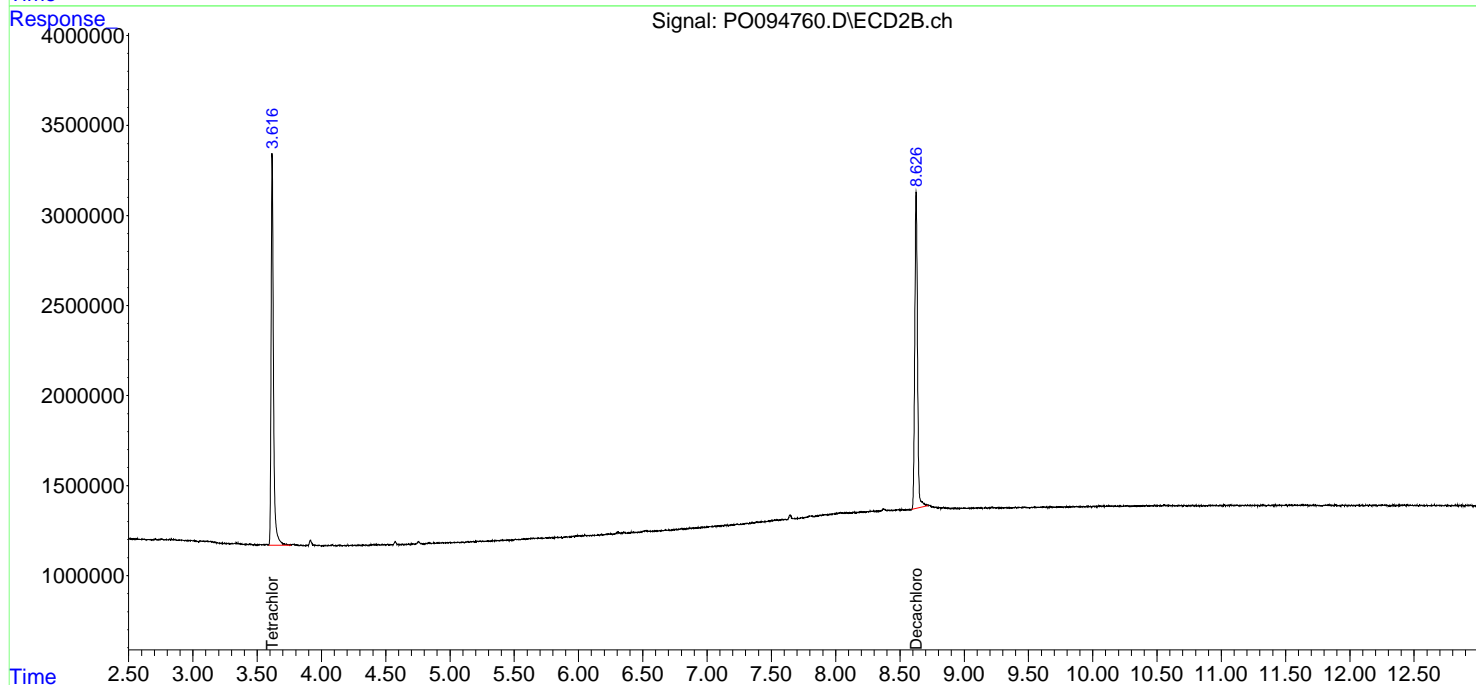
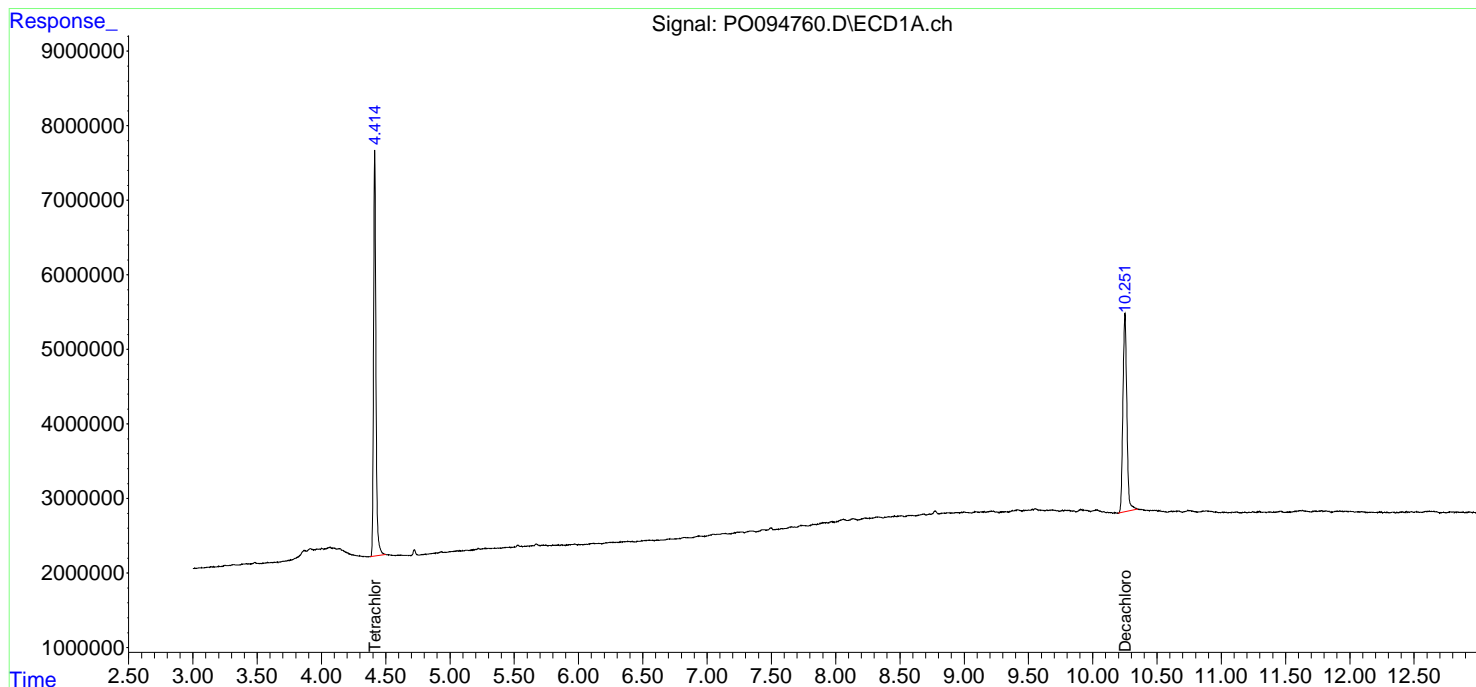
(f)=RT Delta > 1/2 Window (#)=Amounts differ by > 25% (m)=manual int.

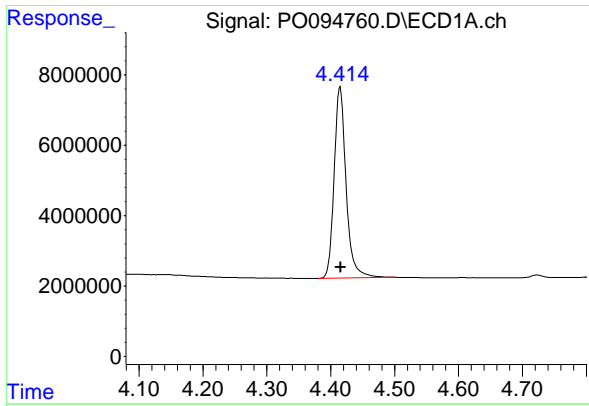
Data Path : Z:\pestpcbsrv\HPCHEM1\ECD_O\Data\PO050523\
 Data File : PO094760.D
 Signal(s) : Signal #1: ECD1A.ch Signal #2: ECD2B.ch
 Acq On : 05 May 2023 10:06
 Operator : YP/AJ
 Sample : PB152564BL
 Misc :
 ALS Vial : 7 Sample Multiplier: 1

Instrument :
 ECD_O
 ClientSampleId :
 PB152564BL

Integration File signal 1: autoint1.e
 Integration File signal 2: autoint2.e
 Quant Time: May 05 21:19:21 2023
 Quant Method : Z:\pestpcbsrv\HPCHEM1\ECD_O\methods\PO042623.M
 Quant Title : GC EXTRACTABLES
 QLast Update : Mon May 01 11:12:50 2023
 Response via : Initial Calibration
 Integrator: ChemStation

Volume Inj. : 2 µl
 Signal #1 Phase : ZB-MR1 Signal #2 Phase: ZB-MR2
 Signal #1 Info : 30Mx0.32mmx 0.50µ Signal #2 Info : 30M x 0.32mm x 0.25µm

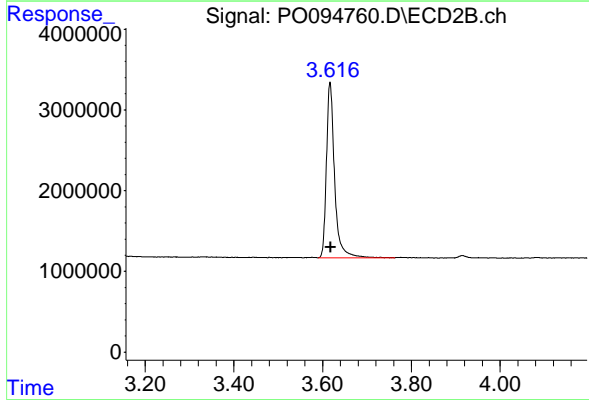




#1 Tetrachloro-m-xylene

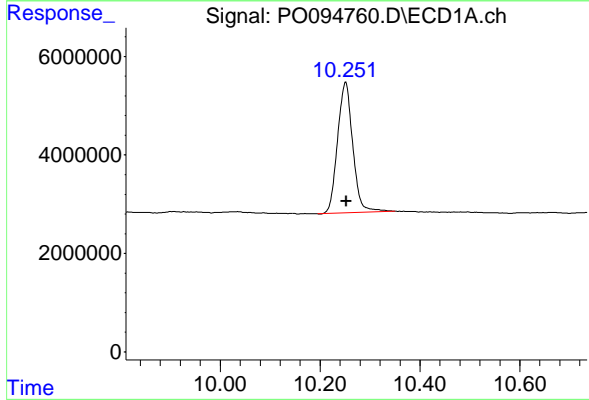
R.T.: 4.415 min
 Delta R.T.: -0.001 min
 Response: 70425675
 Conc: 20.45 ng/ml

Instrument :
 ECD_O
 ClientSampleId :
 PB152564BL



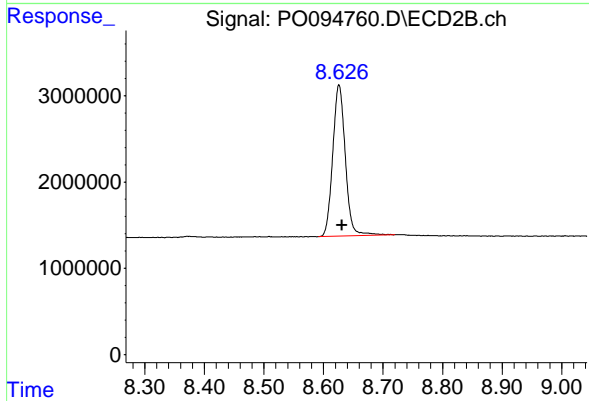
#1 Tetrachloro-m-xylene

R.T.: 3.617 min
 Delta R.T.: -0.001 min
 Response: 27693200
 Conc: 20.70 ng/ml



#2 Decachlorobiphenyl

R.T.: 10.251 min
 Delta R.T.: 0.000 min
 Response: 55980932
 Conc: 23.07 ng/ml



#2 Decachlorobiphenyl

R.T.: 8.626 min
 Delta R.T.: -0.005 min
 Response: 25765513
 Conc: 22.89 ng/ml