

Data Path : Z:\pestpcbsrv\HPCHEM1\ECD_0\Data\P0050619\
 Data File : P0055884.D
 Signal(s) : Signal #1: ECD1A.CH Signal #2: ECD2B.CH
 Acq On : 06 May 2019 11:33
 Operator : SM/SJ
 Sample : K2564-03MSD
 Misc :
 ALS Vial : 8 Sample Multiplier: 1

Instrument :
 ECD_0
 ClientSampleId :
 C-3_042419MSD

Integration File signal 1: autoint1.e
 Integration File signal 2: autoint2.e
 Quant Time: May 07 01:16:43 2019
 Quant Method : Z:\pestpcbsrv\HPCHEM1\ECD_0\methods\P0050319.M
 Quant Title : GC EXTRACTABLES
 QLast Update : Fri May 03 15:20:04 2019
 Response via : Initial Calibration
 Integrator: ChemStation 6890 Scale Mode: Small noise peaks clipped

Volume Inj. : 2 µl
 Signal #1 Phase : ZB-MR1 Signal #2 Phase: ZB-MR2
 Signal #1 Info : 30Mx0.32mmx 0.50µ Signal #2 Info : 30M x 0.32mm x 0.25µm

Compound	RT#1	RT#2	Resp#1	Resp#2	ng/ml	ng/ml

System Monitoring Compounds						
1) SA Tetrachlo...	4.273	3.588	638856	586138	21.348	20.753
2) SA Decachlor...	9.871	8.537	665270	474251	17.780	17.537
Target Compounds						
3) L1 AR-1016-1	5.435	4.660	367184	330145	258.376	245.660
4) L1 AR-1016-2	5.457	4.679	501862	436215	253.610	238.898
5) L1 AR-1016-3	5.518	4.852	306387	272439	239.040	271.861
6) L1 AR-1016-4	5.617	4.893	249330	228017	238.542	280.245
7) L1 AR-1016-5	5.908	5.105	255827	321533	227.095	292.075 #
8) L2 AR-1221-1	4.476	3.797	28877	24622	66.423	67.065
9) L2 AR-1221-2	4.570	3.883	34989	34977	104.341	126.111
10) L2 AR-1221-3	4.645	3.958	160657	125271	159.764	140.991
11) L3 AR-1232-1	4.645	3.958	160657	125271	187.049	169.268
12) L3 AR-1232-2	5.169	4.679	249234	436215	513.761	497.708
13) L3 AR-1232-3	5.457	4.852	501862	272439	518.729	567.973
14) L3 AR-1232-4	5.617	4.934	249330	263700	490.286	620.816 #
15) L3 AR-1232-5	5.706	5.105	213222	321533	491.098	663.494 #
16) L4 AR-1242-1	5.435	4.660	367184	330145	303.258	294.609
17) L4 AR-1242-2	5.457	4.679	501862	436215	297.242	286.711
18) L4 AR-1242-3	5.518	4.852	306387	272439	279.667	314.590
19) L4 AR-1242-4	5.617	4.934	249330	263700	277.089	314.790
20) L4 AR-1242-5	6.347	5.453	88645	208841	81.031	173.977 #
21) L5 AR-1248-1	5.435	4.660	367184	330145	405.674	393.719
22) L5 AR-1248-2	5.706	4.893	213222	228017	159.882	207.521 #
23) L5 AR-1248-3	5.908	4.934	255827	263700	173.239	232.305 #
24) L5 AR-1248-4	6.285	5.105	550472	321533	315.686	228.984 #
25) L5 AR-1248-5	6.347	5.479	88645	198872	53.070	132.784 #
26) L6 AR-1254-1	6.285	5.453	550472	208841	262.150	78.033 #
27) L6 AR-1254-2	6.500	5.599	251770	200935	75.861	82.259
28) L6 AR-1254-3	6.875	6.014	520486	400350	143.167	100.904 #
29) L6 AR-1254-4	7.149	6.226	182776	49060	67.180	18.298 #
30) L6 AR-1254-5	7.565	6.640	769295	682763	268.410	188.677 #
31) L7 AR-1260-1	7.026	6.128	634010	470854	293.592	213.715 #
32) L7 AR-1260-2	7.283	6.313	733010	697384	279.894	228.383
33) L7 AR-1260-3	7.639	6.467	408322	473018	204.162	189.813
34) L7 AR-1260-4	7.864	6.935	510199	374457	220.617	181.469
35) L7 AR-1260-5	8.173	7.176	841014	949270	198.244	189.012
36) L8 AR-1262-1	7.639	6.677	408322	469862	127.368	114.578
37) L8 AR-1262-2	8.173	7.176	841014	949270	156.651	151.815
38) L8 AR-1262-3	8.485	7.457	554180	212319	152.715	86.205 #
39) L8 AR-1262-4	8.535	7.520	293971	584063	108.273	142.630 #
40) L8 AR-1262-5	9.174	8.012	130629	176051	72.310	103.308 #
41) L9 AR-1268-1	8.485	7.457	554180	212319	91.769	30.643 #
42) L9 AR-1268-2	8.535	7.520	293971	584063	53.706	102.662 #

Data Path : Z:\pestpcbsrv\HPCHEM1\ECD_0\Data\P0050619\
 Data File : P0055884.D
 Signal(s) : Signal #1: ECD1A.CH Signal #2: ECD2B.CH
 Acq On : 06 May 2019 11:33
 Operator : SM/SJ
 Sample : K2564-03MSD
 Misc :
 ALS Vial : 8 Sample Multiplier: 1

Instrument :
 ECD_0
 ClientSampleId :
 C-3_042419MSD

Integration File signal 1: autoint1.e
 Integration File signal 2: autoint2.e
 Quant Time: May 07 01:16:43 2019
 Quant Method : Z:\pestpcbsrv\HPCHEM1\ECD_0\methods\P0050319.M
 Quant Title : GC EXTRACTABLES
 QLast Update : Fri May 03 15:20:04 2019
 Response via : Initial Calibration
 Integrator: ChemStation 6890 Scale Mode: Small noise peaks clipped

Volume Inj. : 2 µl
 Signal #1 Phase : ZB-MR1 Signal #2 Phase: ZB-MR2
 Signal #1 Info : 30Mx0.32mmx 0.50µ Signal #2 Info : 30M x 0.32mm x 0.25µm

	Compound	RT#1	RT#2	Resp#1	Resp#2	ng/ml	ng/ml
43)	L9 AR-1268-3	0.000	7.725	0	41273	N.D.	8.739 #
44)	L9 AR-1268-4	9.174	8.012	130629	176051	66.573	93.065 #
45)	L9 AR-1268-5	9.558	8.293	330944	73992	24.530	6.076 #

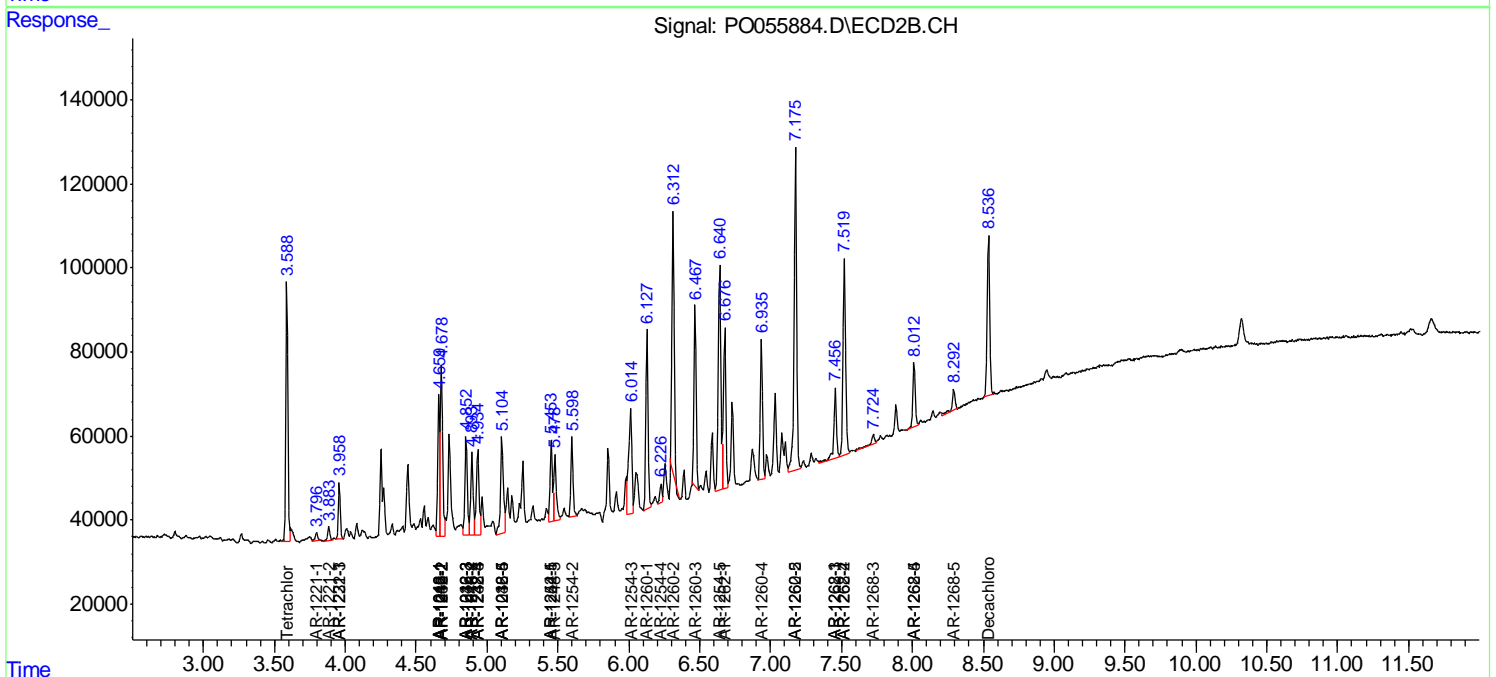
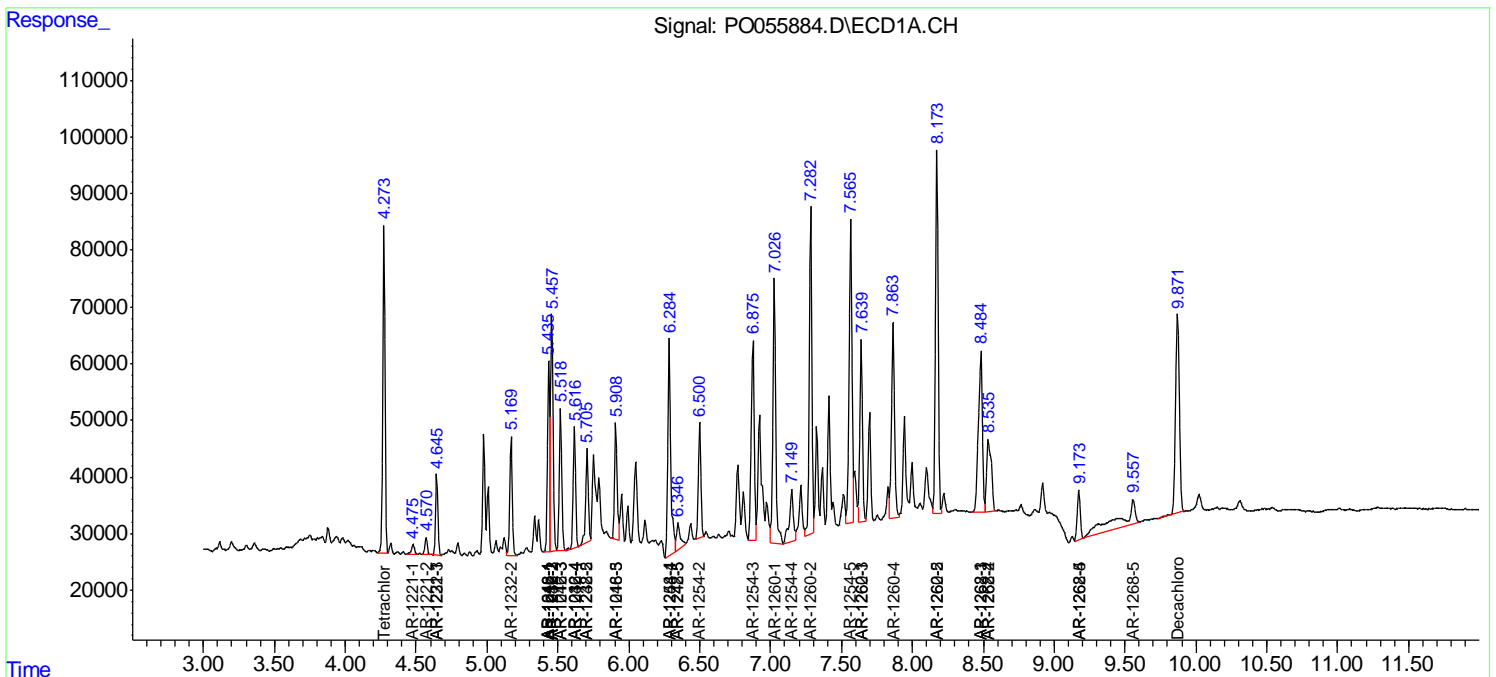
(f)=RT Delta > 1/2 Window (#)=Amounts differ by > 25% (m)=manual int.

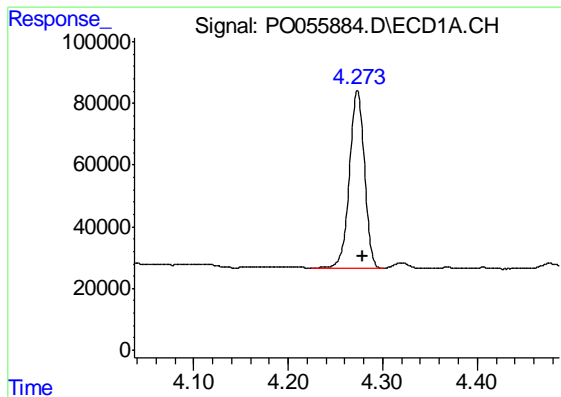
Data Path : Z:\pestpcbsrv\HPCHEM1\ECD_O\Data\PO050619\
 Data File : PO055884.D
 Signal(s) : Signal #1: ECD1A.CH Signal #2: ECD2B.CH
 Acq On : 06 May 2019 11:33
 Operator : SM/SJ
 Sample : K2564-03MSD
 Misc :
 ALS Vial : 8 Sample Multiplier: 1

Instrument :
 ECD_O
 ClientSampled :
 C-3_042419MSD

Integration File signal 1: autoint1.e
 Integration File signal 2: autoint2.e
 Quant Time: May 07 01:16:43 2019
 Quant Method : Z:\pestpcbsrv\HPCHEM1\ECD_O\methods\PO050319.M
 Quant Title : GC EXTRACTABLES
 QLast Update : Fri May 03 15:20:04 2019
 Response via : Initial Calibration
 Integrator: ChemStation 6890 Scale Mode: Small noise peaks clipped

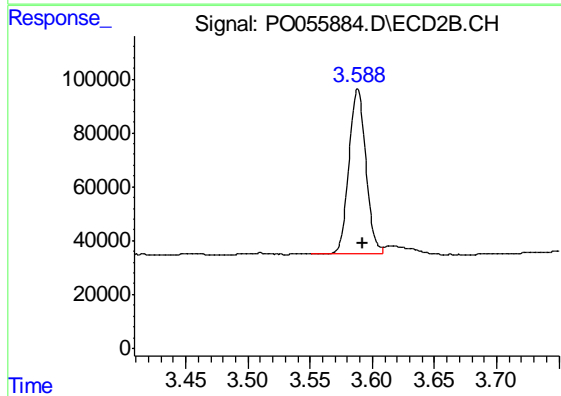
Volume Inj. : 2 µl
 Signal #1 Phase : ZB-MR1 Signal #2 Phase: ZB-MR2
 Signal #1 Info : 30Mx0.32mmx 0.50µ Signal #2 Info : 30M x 0.32mm x 0.25µm



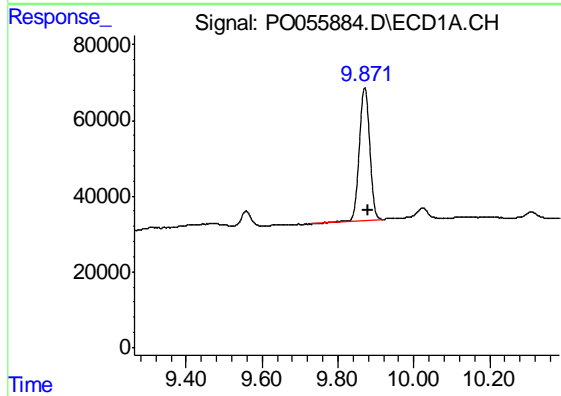


#1 Tetrachloro-m-xylene
 R.T.: 4.273 min
 Delta R.T.: -0.006 min
 Response: 638856
 Conc: 21.35 ng/ml

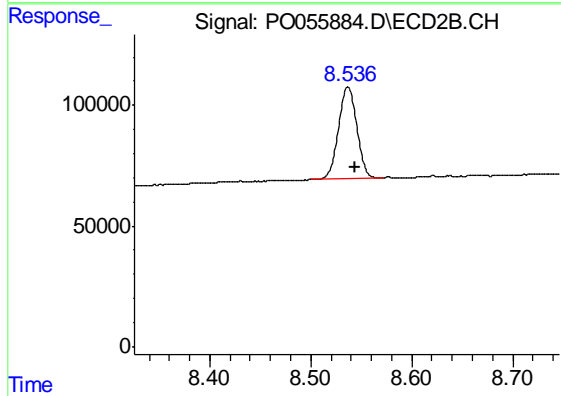
Instrument :
 ECD_O
 ClientSampleId :
 C-3_042419MSD



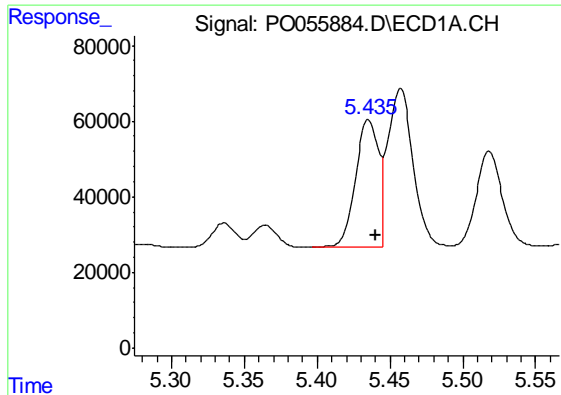
#1 Tetrachloro-m-xylene
 R.T.: 3.588 min
 Delta R.T.: -0.005 min
 Response: 586138
 Conc: 20.75 ng/ml



#2 Decachlorobiphenyl
 R.T.: 9.871 min
 Delta R.T.: -0.008 min
 Response: 665270
 Conc: 17.78 ng/ml



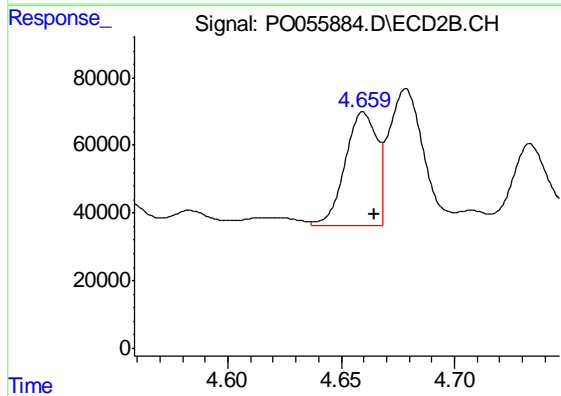
#2 Decachlorobiphenyl
 R.T.: 8.537 min
 Delta R.T.: -0.007 min
 Response: 474251
 Conc: 17.54 ng/ml



#3 AR-1016-1

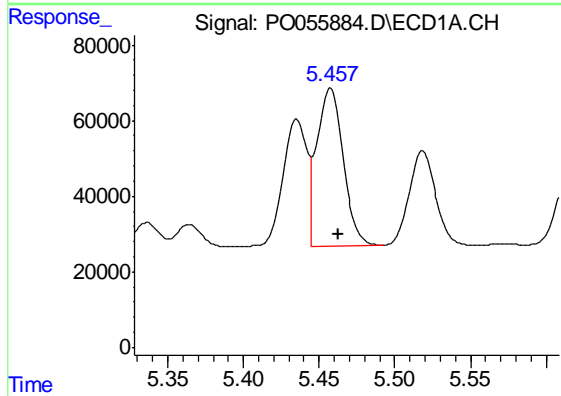
R.T.: 5.435 min
 Delta R.T.: -0.005 min
 Response: 367184
 Conc: 258.38 ng/ml

Instrument :
 ECD_O
 ClientSampleId :
 C-3_042419MSD



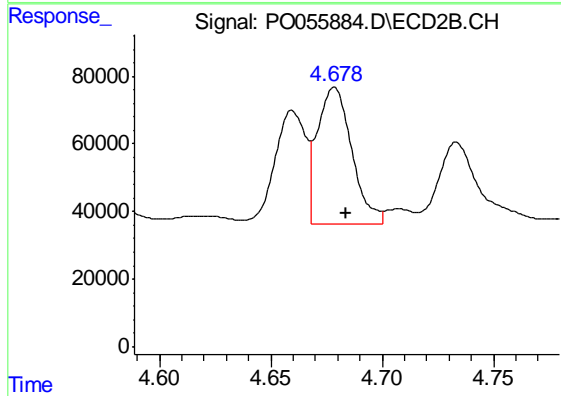
#3 AR-1016-1

R.T.: 4.660 min
 Delta R.T.: -0.005 min
 Response: 330145
 Conc: 245.66 ng/ml



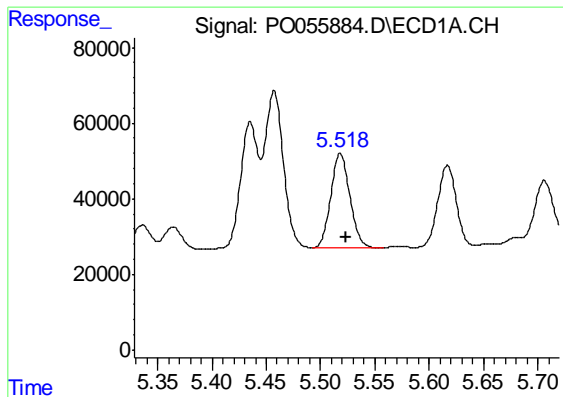
#4 AR-1016-2

R.T.: 5.457 min
 Delta R.T.: -0.005 min
 Response: 501862
 Conc: 253.61 ng/ml



#4 AR-1016-2

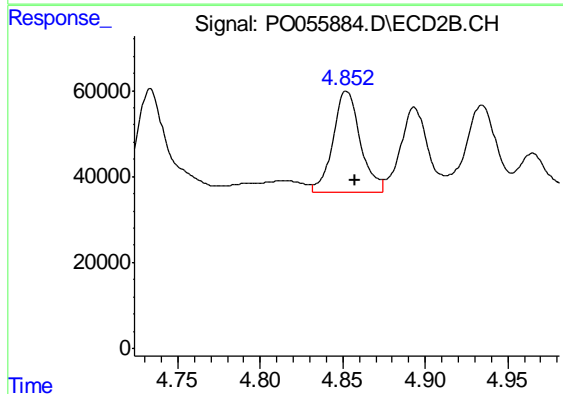
R.T.: 4.679 min
 Delta R.T.: -0.005 min
 Response: 436215
 Conc: 238.90 ng/ml



#5 AR-1016-3

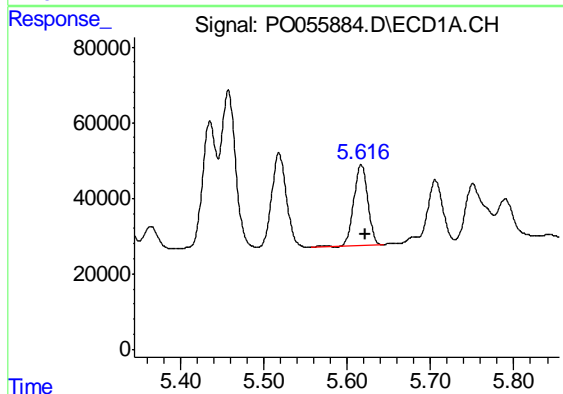
R.T.: 5.518 min
 Delta R.T.: -0.006 min
 Response: 306387
 Conc: 239.04 ng/ml

Instrument :
 ECD_O
 ClientSampleId :
 C-3_042419MSD



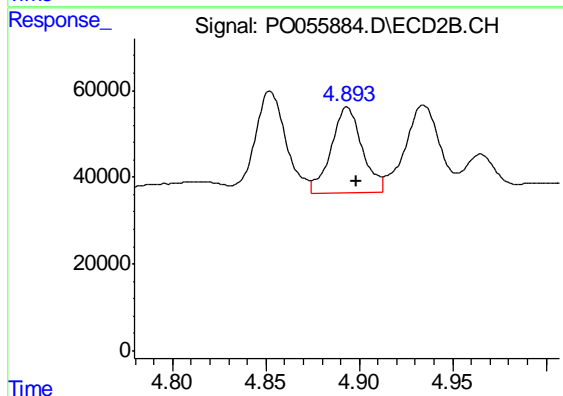
#5 AR-1016-3

R.T.: 4.852 min
 Delta R.T.: -0.005 min
 Response: 272439
 Conc: 271.86 ng/ml



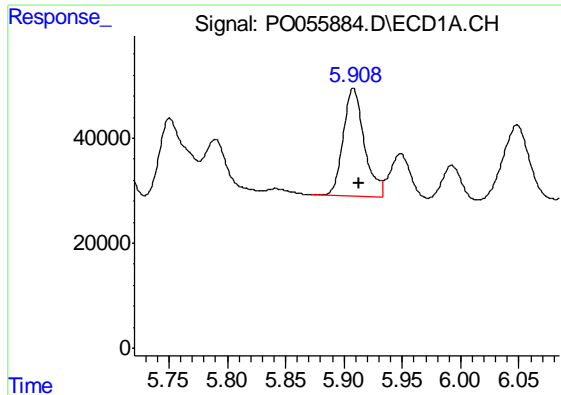
#6 AR-1016-4

R.T.: 5.617 min
 Delta R.T.: -0.005 min
 Response: 249330
 Conc: 238.54 ng/ml



#6 AR-1016-4

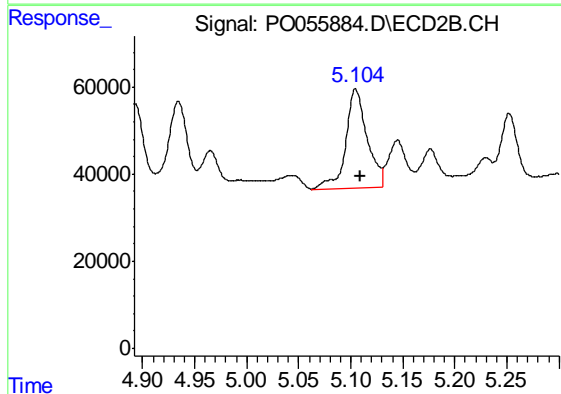
R.T.: 4.893 min
 Delta R.T.: -0.005 min
 Response: 228017
 Conc: 280.25 ng/ml



#7 AR-1016-5

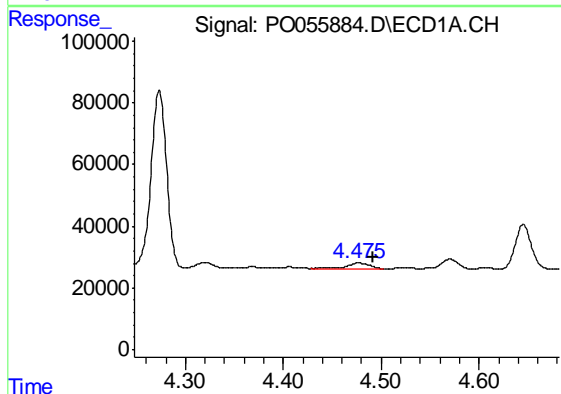
R.T.: 5.908 min
 Delta R.T.: -0.005 min
 Response: 255827
 Conc: 227.10 ng/ml

Instrument :
 ECD_O
 ClientSampleId :
 C-3_042419MSD



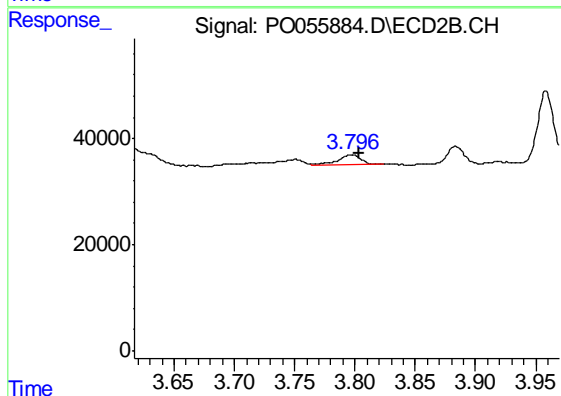
#7 AR-1016-5

R.T.: 5.105 min
 Delta R.T.: -0.004 min
 Response: 321533
 Conc: 292.08 ng/ml



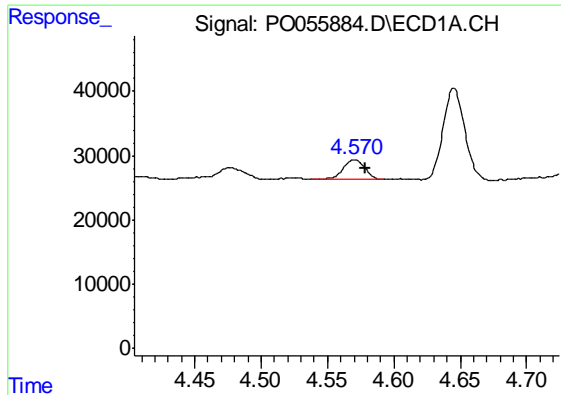
#8 AR-1221-1

R.T.: 4.476 min
 Delta R.T.: -0.016 min
 Response: 28877
 Conc: 66.42 ng/ml



#8 AR-1221-1

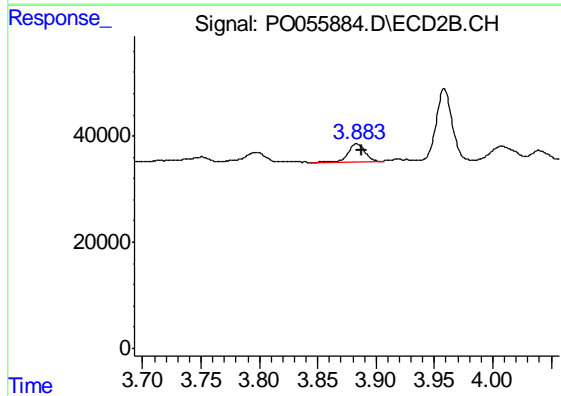
R.T.: 3.797 min
 Delta R.T.: -0.006 min
 Response: 24622
 Conc: 67.07 ng/ml



#9 AR-1221-2

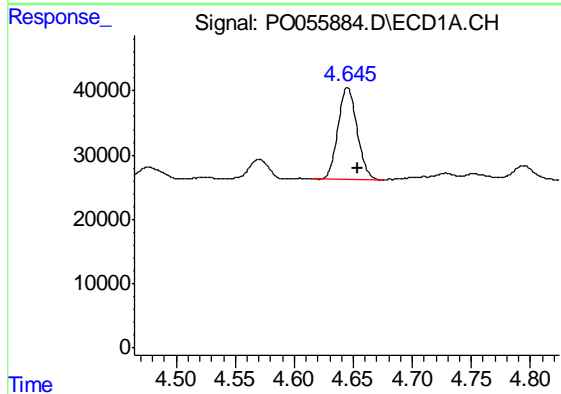
R.T.: 4.570 min
 Delta R.T.: -0.008 min
 Response: 34989
 Conc: 104.34 ng/ml

Instrument :
 ECD_O
 ClientSampleId :
 C-3_042419MSD



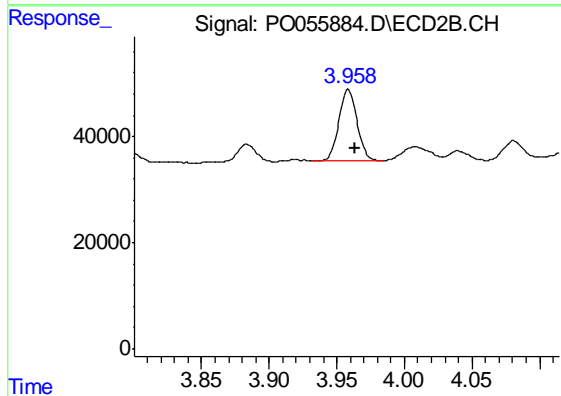
#9 AR-1221-2

R.T.: 3.883 min
 Delta R.T.: -0.005 min
 Response: 34977
 Conc: 126.11 ng/ml



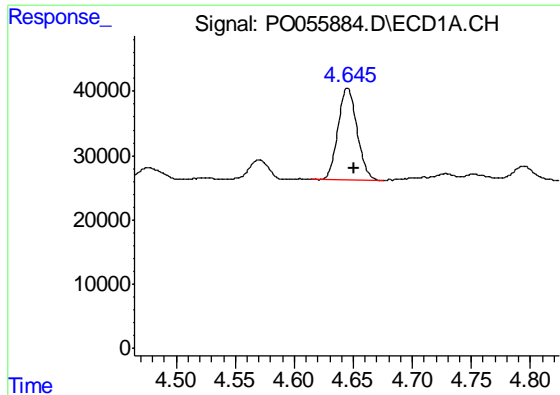
#10 AR-1221-3

R.T.: 4.645 min
 Delta R.T.: -0.008 min
 Response: 160657
 Conc: 159.76 ng/ml



#10 AR-1221-3

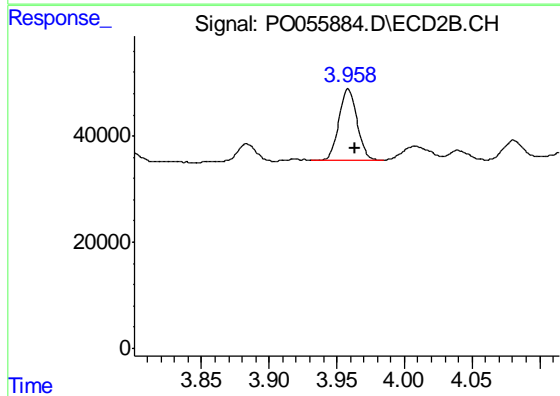
R.T.: 3.958 min
 Delta R.T.: -0.005 min
 Response: 125271
 Conc: 140.99 ng/ml



#11 AR-1232-1

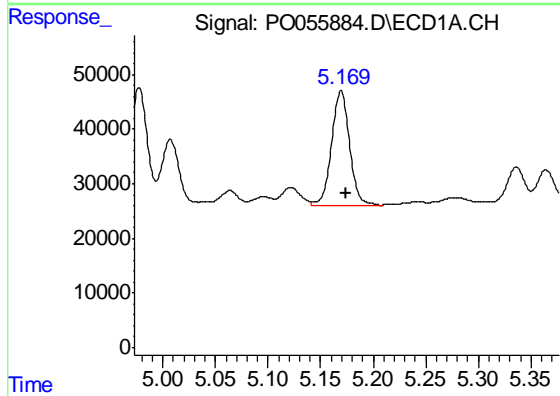
R.T.: 4.645 min
 Delta R.T.: -0.005 min
 Response: 160657
 Conc: 187.05 ng/ml

Instrument :
 ECD_O
 ClientSampleId :
 C-3_042419MSD



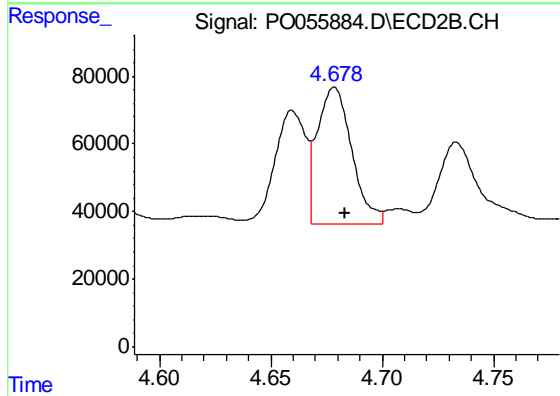
#11 AR-1232-1

R.T.: 3.958 min
 Delta R.T.: -0.005 min
 Response: 125271
 Conc: 169.27 ng/ml



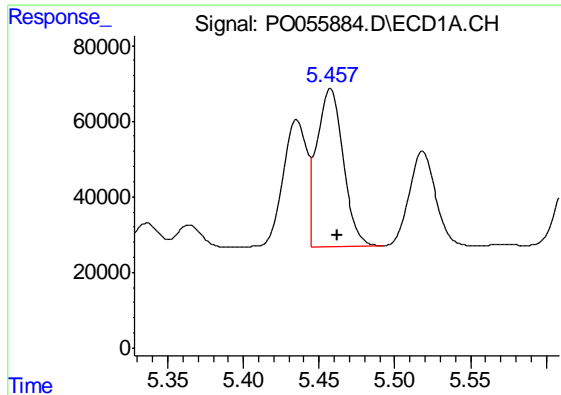
#12 AR-1232-2

R.T.: 5.169 min
 Delta R.T.: -0.005 min
 Response: 249234
 Conc: 513.76 ng/ml



#12 AR-1232-2

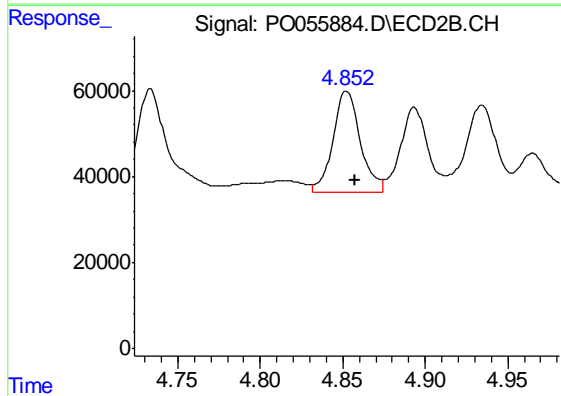
R.T.: 4.679 min
 Delta R.T.: -0.005 min
 Response: 436215
 Conc: 497.71 ng/ml



#13 AR-1232-3

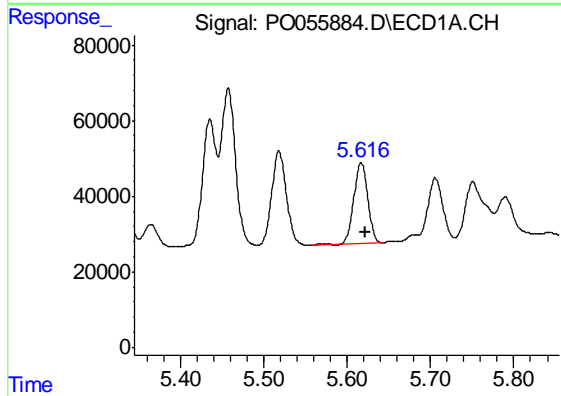
R.T.: 5.457 min
 Delta R.T.: -0.005 min
 Response: 501862
 Conc: 518.73 ng/ml

Instrument :
 ECD_O
 ClientSampleId :
 C-3_042419MSD



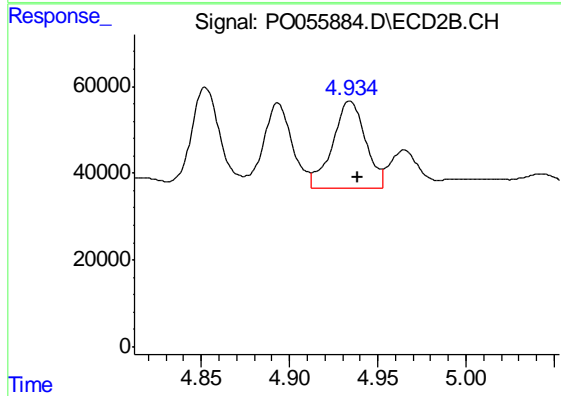
#13 AR-1232-3

R.T.: 4.852 min
 Delta R.T.: -0.005 min
 Response: 272439
 Conc: 567.97 ng/ml



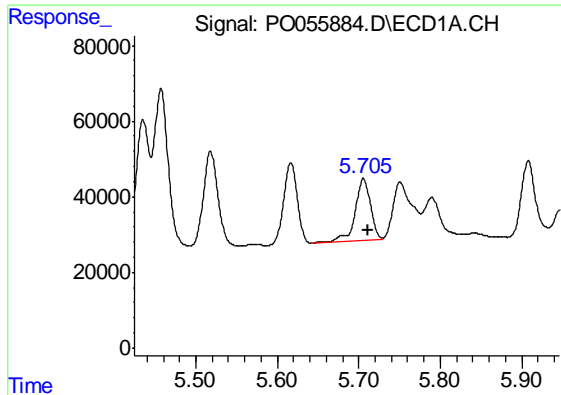
#14 AR-1232-4

R.T.: 5.617 min
 Delta R.T.: -0.005 min
 Response: 249330
 Conc: 490.29 ng/ml



#14 AR-1232-4

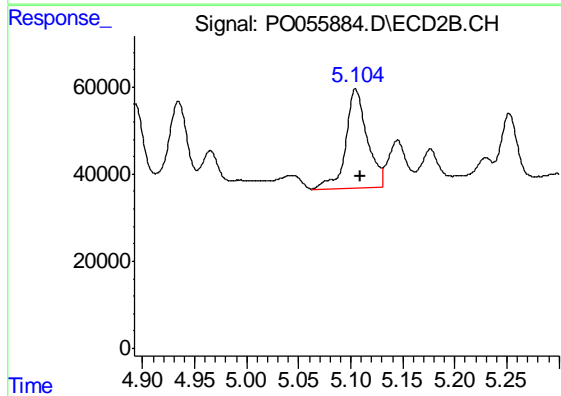
R.T.: 4.934 min
 Delta R.T.: -0.005 min
 Response: 263700
 Conc: 620.82 ng/ml



#15 AR-1232-5

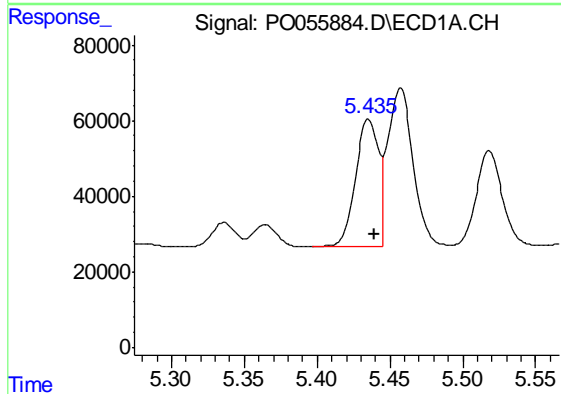
R.T.: 5.706 min
 Delta R.T.: -0.005 min
 Response: 213222
 Conc: 491.10 ng/ml

Instrument :
 ECD_O
 ClientSampleId :
 C-3_042419MSD



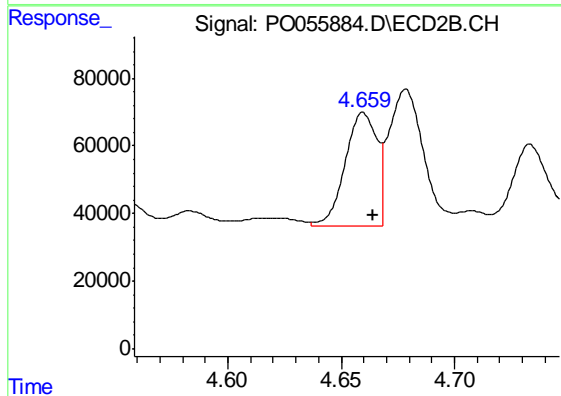
#15 AR-1232-5

R.T.: 5.105 min
 Delta R.T.: -0.005 min
 Response: 321533
 Conc: 663.49 ng/ml



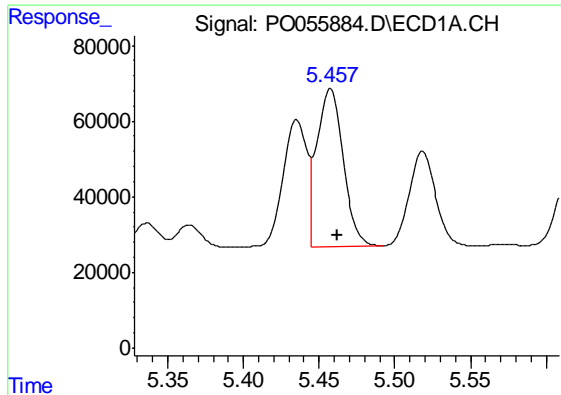
#16 AR-1242-1

R.T.: 5.435 min
 Delta R.T.: -0.004 min
 Response: 367184
 Conc: 303.26 ng/ml



#16 AR-1242-1

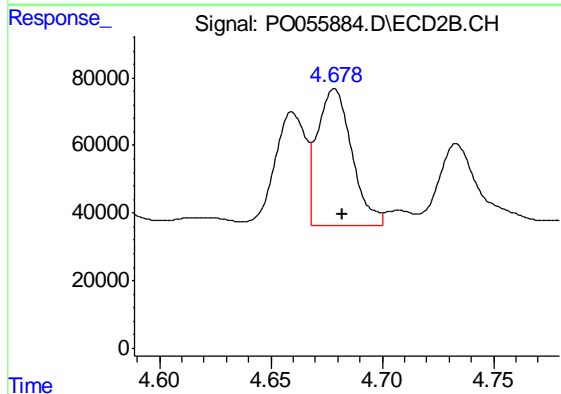
R.T.: 4.660 min
 Delta R.T.: -0.004 min
 Response: 330145
 Conc: 294.61 ng/ml



#17 AR-1242-2

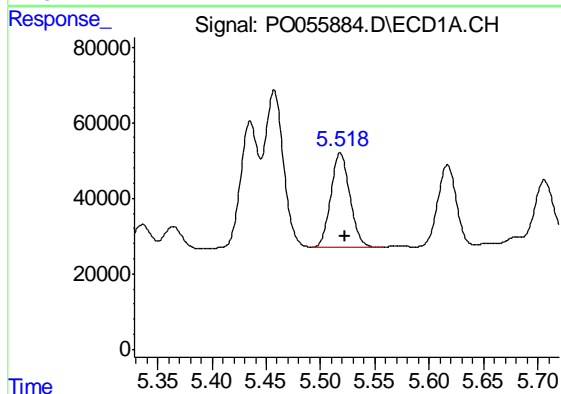
R.T.: 5.457 min
 Delta R.T.: -0.004 min
 Response: 501862
 Conc: 297.24 ng/ml

Instrument :
 ECD_O
 ClientSampleId :
 C-3_042419MSD



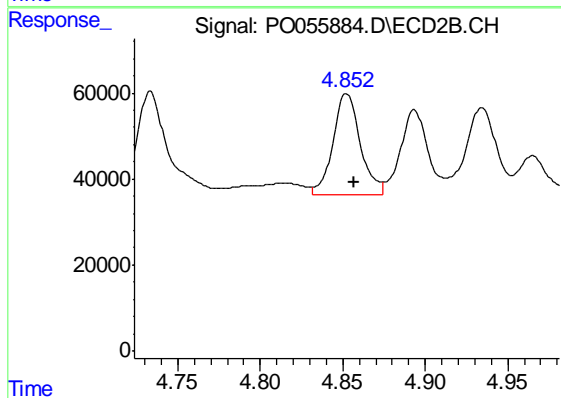
#17 AR-1242-2

R.T.: 4.679 min
 Delta R.T.: -0.004 min
 Response: 436215
 Conc: 286.71 ng/ml



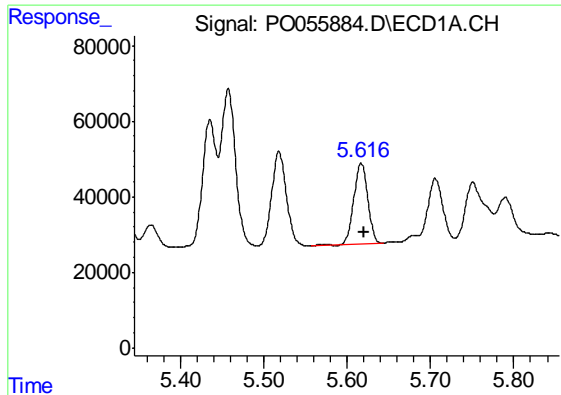
#18 AR-1242-3

R.T.: 5.518 min
 Delta R.T.: -0.004 min
 Response: 306387
 Conc: 279.67 ng/ml



#18 AR-1242-3

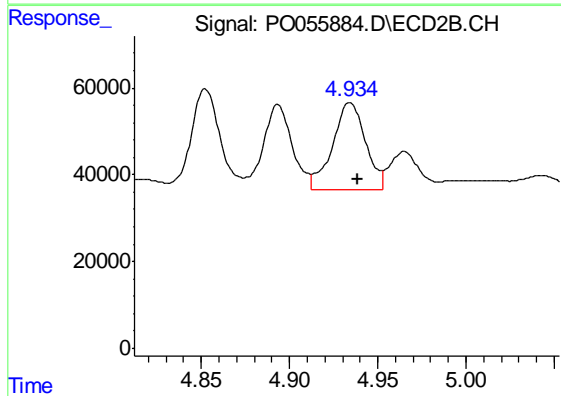
R.T.: 4.852 min
 Delta R.T.: -0.005 min
 Response: 272439
 Conc: 314.59 ng/ml



#19 AR-1242-4

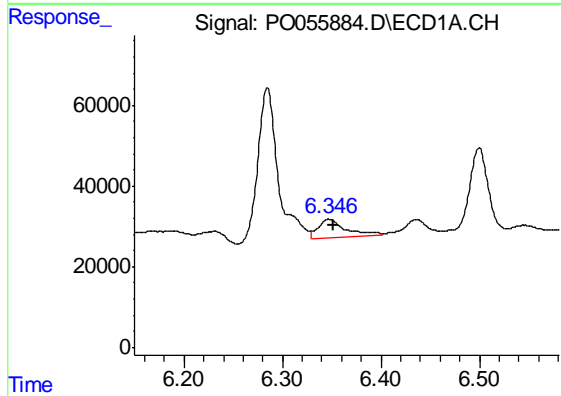
R.T.: 5.617 min
 Delta R.T.: -0.004 min
 Response: 249330
 Conc: 277.09 ng/ml

Instrument :
 ECD_O
 ClientSampleId :
 C-3_042419MSD



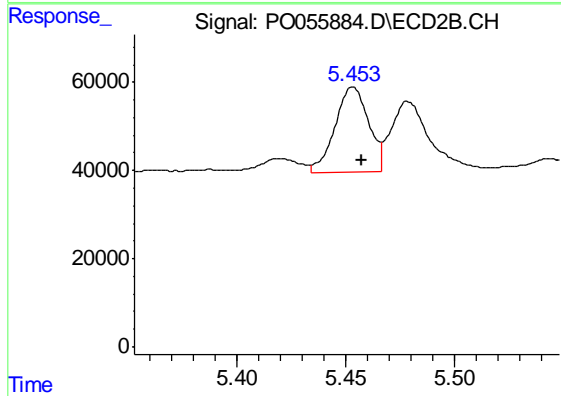
#19 AR-1242-4

R.T.: 4.934 min
 Delta R.T.: -0.004 min
 Response: 263700
 Conc: 314.79 ng/ml



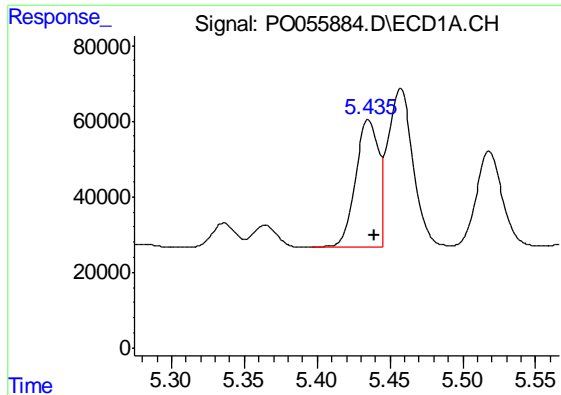
#20 AR-1242-5

R.T.: 6.347 min
 Delta R.T.: -0.005 min
 Response: 88645
 Conc: 81.03 ng/ml



#20 AR-1242-5

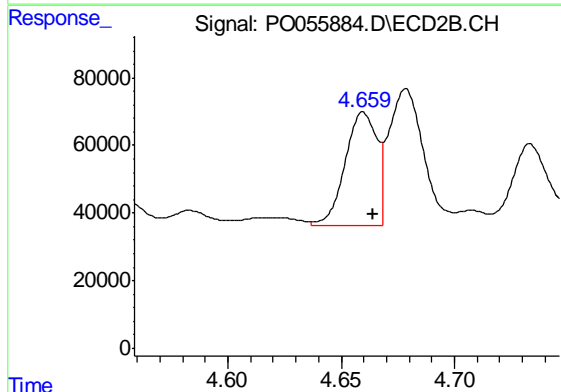
R.T.: 5.453 min
 Delta R.T.: -0.004 min
 Response: 208841
 Conc: 173.98 ng/ml



#21 AR-1248-1

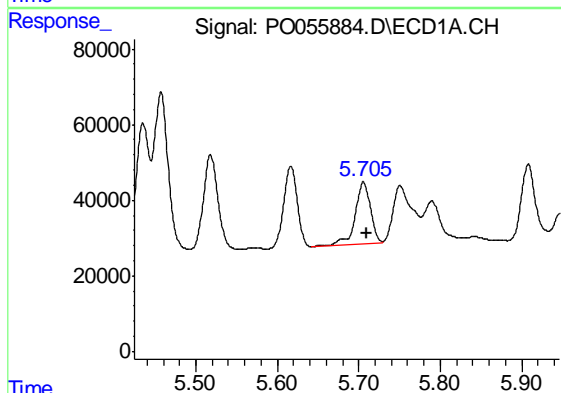
R.T.: 5.435 min
 Delta R.T.: -0.004 min
 Response: 367184
 Conc: 405.67 ng/ml

Instrument :
 ECD_O
 ClientSampleId :
 C-3_042419MSD



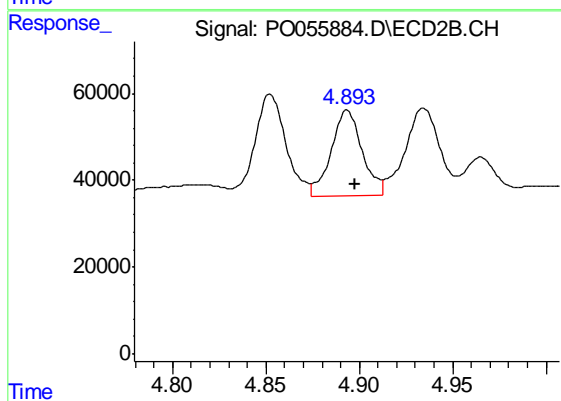
#21 AR-1248-1

R.T.: 4.660 min
 Delta R.T.: -0.004 min
 Response: 330145
 Conc: 393.72 ng/ml



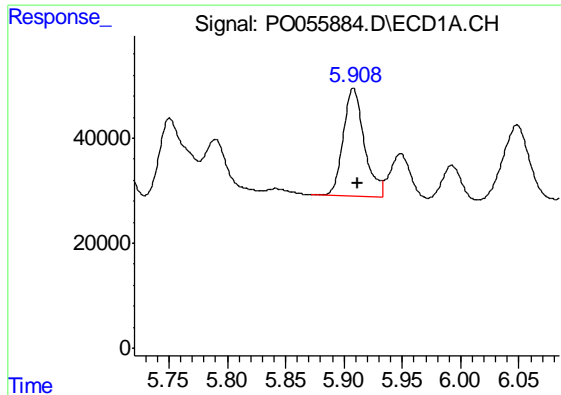
#22 AR-1248-2

R.T.: 5.706 min
 Delta R.T.: -0.004 min
 Response: 213222
 Conc: 159.88 ng/ml



#22 AR-1248-2

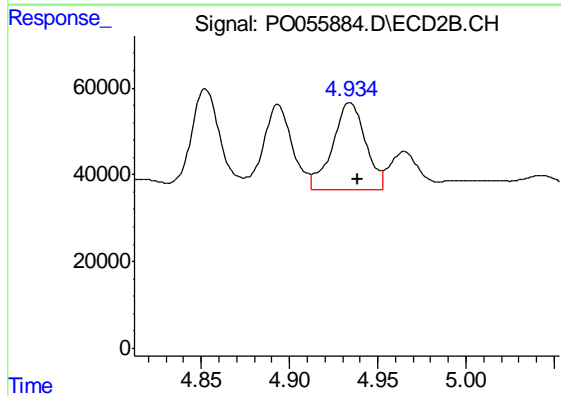
R.T.: 4.893 min
 Delta R.T.: -0.004 min
 Response: 228017
 Conc: 207.52 ng/ml



#23 AR-1248-3

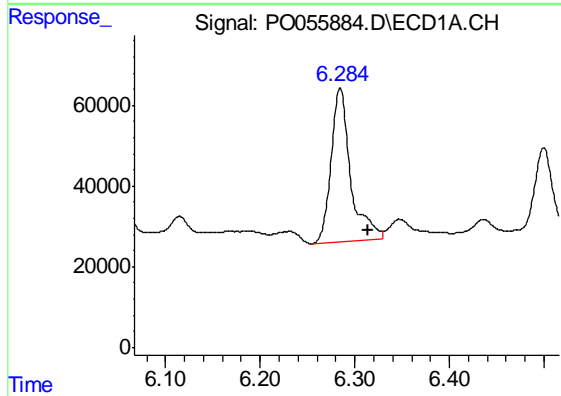
R.T.: 5.908 min
 Delta R.T.: -0.004 min
 Response: 255827
 Conc: 173.24 ng/ml

Instrument :
 ECD_O
 ClientSampleId :
 C-3_042419MSD



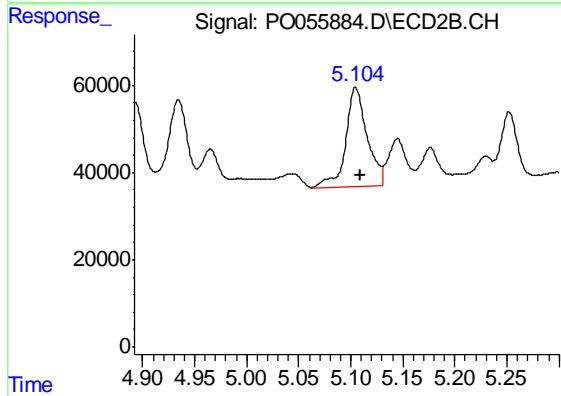
#23 AR-1248-3

R.T.: 4.934 min
 Delta R.T.: -0.004 min
 Response: 263700
 Conc: 232.30 ng/ml



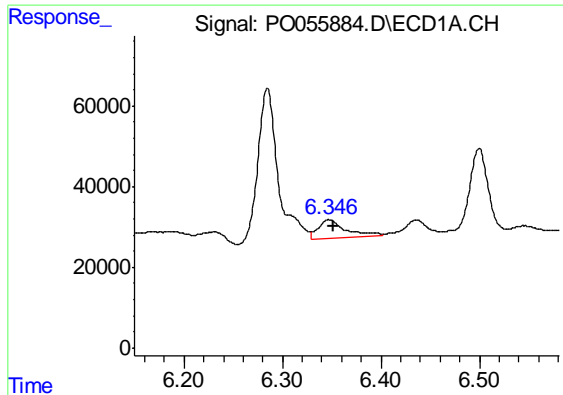
#24 AR-1248-4

R.T.: 6.285 min
 Delta R.T.: -0.030 min
 Response: 550472
 Conc: 315.69 ng/ml



#24 AR-1248-4

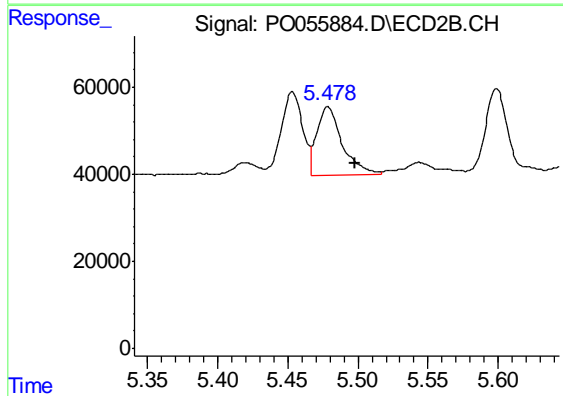
R.T.: 5.105 min
 Delta R.T.: -0.004 min
 Response: 321533
 Conc: 228.98 ng/ml



#25 AR-1248-5

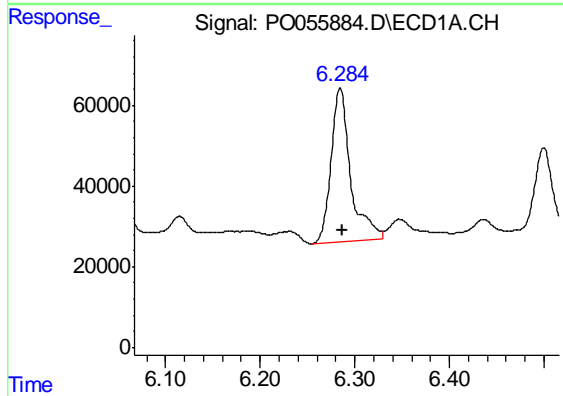
R.T.: 6.347 min
 Delta R.T.: -0.004 min
 Response: 88645
 Conc: 53.07 ng/ml

Instrument :
 ECD_O
 ClientSampleId :
 C-3_042419MSD



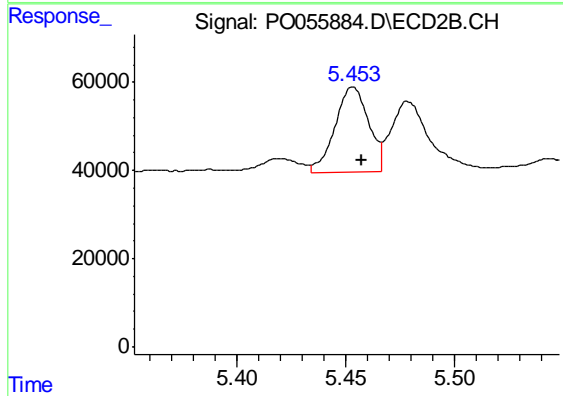
#25 AR-1248-5

R.T.: 5.479 min
 Delta R.T.: -0.020 min
 Response: 198872
 Conc: 132.78 ng/ml



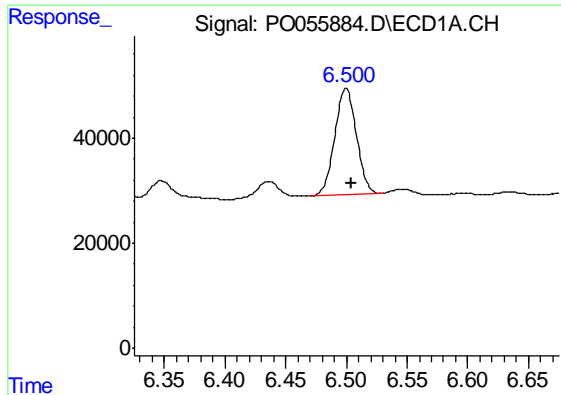
#26 AR-1254-1

R.T.: 6.285 min
 Delta R.T.: -0.002 min
 Response: 550472
 Conc: 262.15 ng/ml



#26 AR-1254-1

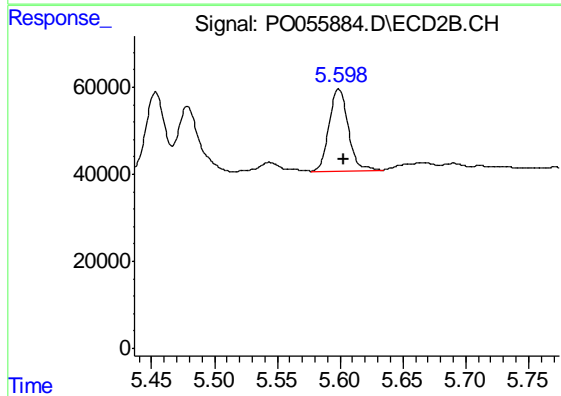
R.T.: 5.453 min
 Delta R.T.: -0.004 min
 Response: 208841
 Conc: 78.03 ng/ml



#27 AR-1254-2

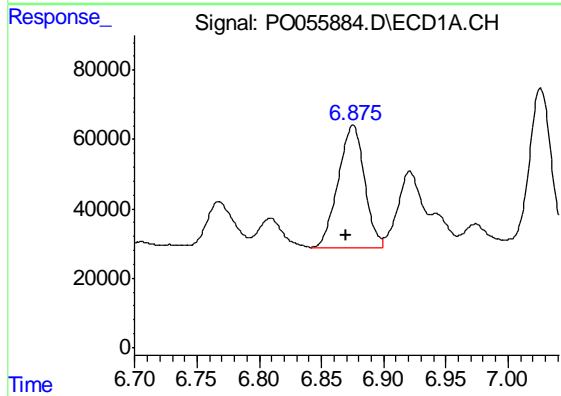
R.T.: 6.500 min
 Delta R.T.: -0.004 min
 Response: 251770
 Conc: 75.86 ng/ml

Instrument :
 ECD_O
 ClientSampleId :
 C-3_042419MSD



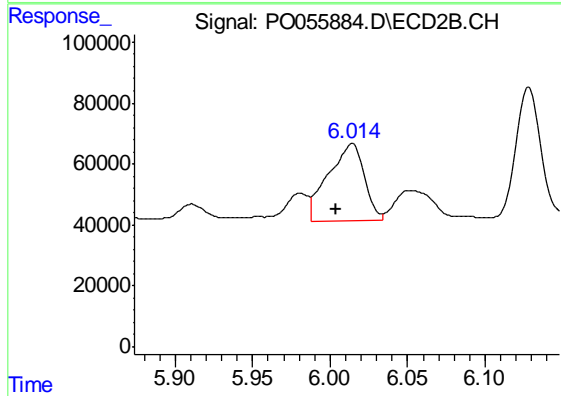
#27 AR-1254-2

R.T.: 5.599 min
 Delta R.T.: -0.004 min
 Response: 200935
 Conc: 82.26 ng/ml



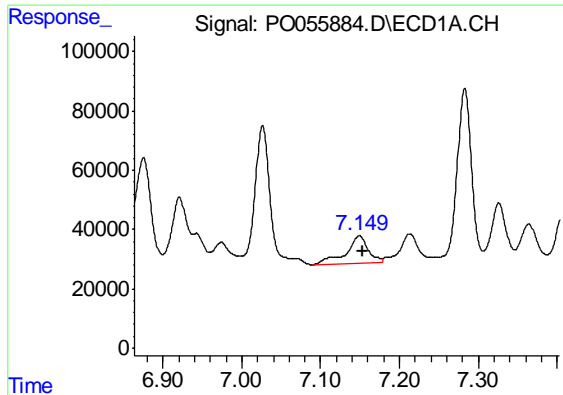
#28 AR-1254-3

R.T.: 6.875 min
 Delta R.T.: 0.006 min
 Response: 520486
 Conc: 143.17 ng/ml



#28 AR-1254-3

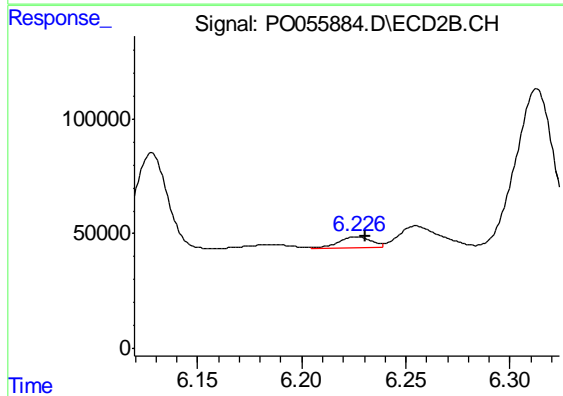
R.T.: 6.014 min
 Delta R.T.: 0.010 min
 Response: 400350
 Conc: 100.90 ng/ml



#29 AR-1254-4

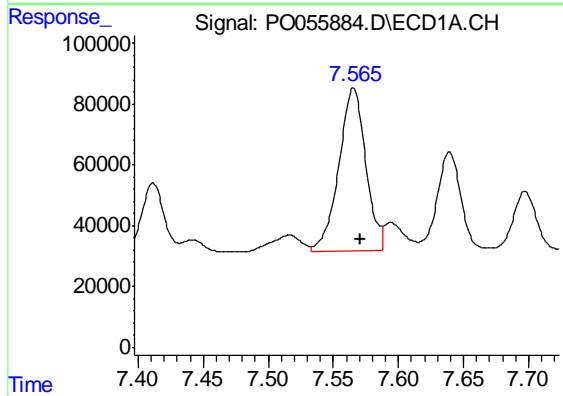
R.T.: 7.149 min
 Delta R.T.: -0.005 min
 Response: 182776
 Conc: 67.18 ng/ml

Instrument :
 ECD_O
 ClientSampleId :
 C-3_042419MSD



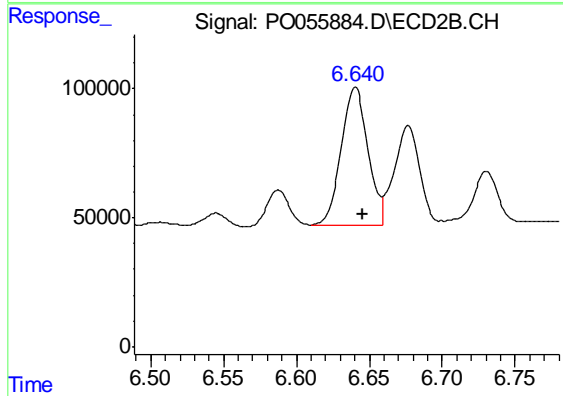
#29 AR-1254-4

R.T.: 6.226 min
 Delta R.T.: -0.004 min
 Response: 49060
 Conc: 18.30 ng/ml



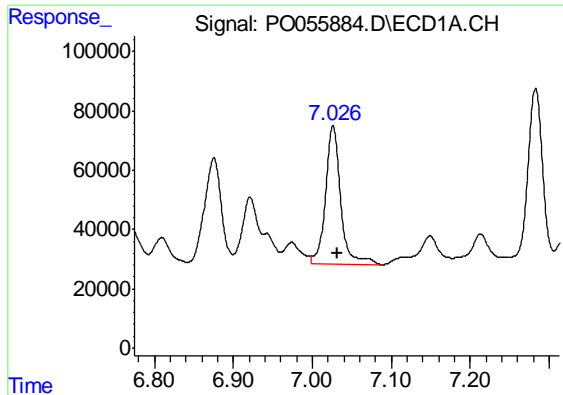
#30 AR-1254-5

R.T.: 7.565 min
 Delta R.T.: -0.006 min
 Response: 769295
 Conc: 268.41 ng/ml



#30 AR-1254-5

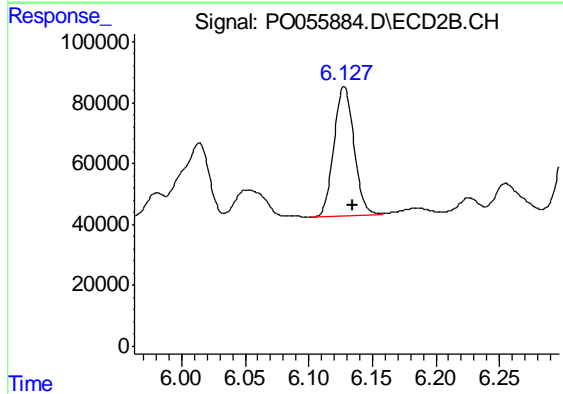
R.T.: 6.640 min
 Delta R.T.: -0.005 min
 Response: 682763
 Conc: 188.68 ng/ml



#31 AR-1260-1

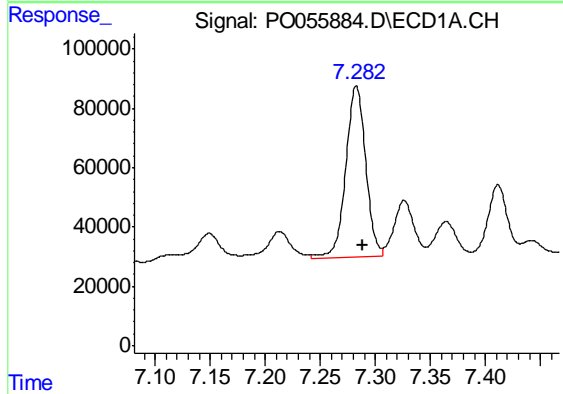
R.T.: 7.026 min
 Delta R.T.: -0.006 min
 Response: 634010
 Conc: 293.59 ng/ml

Instrument :
 ECD_O
 ClientSampleId :
 C-3_042419MSD



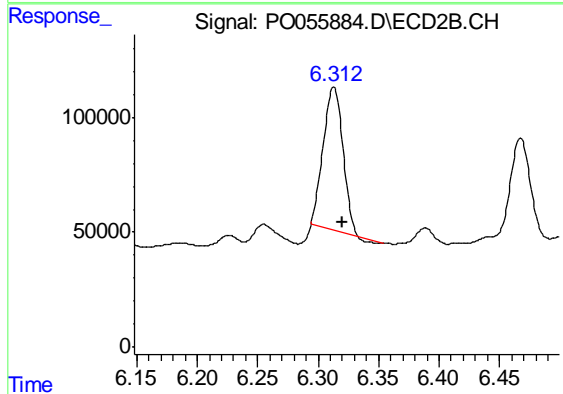
#31 AR-1260-1

R.T.: 6.128 min
 Delta R.T.: -0.006 min
 Response: 470854
 Conc: 213.71 ng/ml



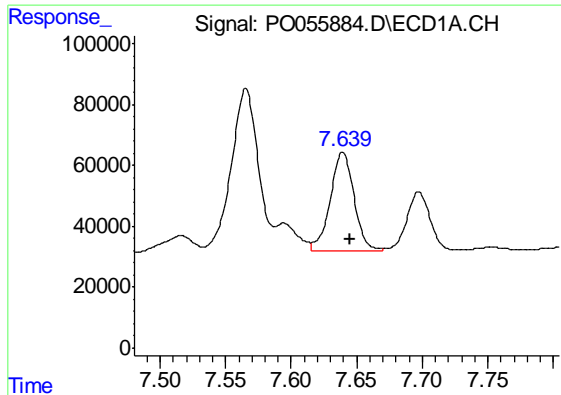
#32 AR-1260-2

R.T.: 7.283 min
 Delta R.T.: -0.006 min
 Response: 733010
 Conc: 279.89 ng/ml



#32 AR-1260-2

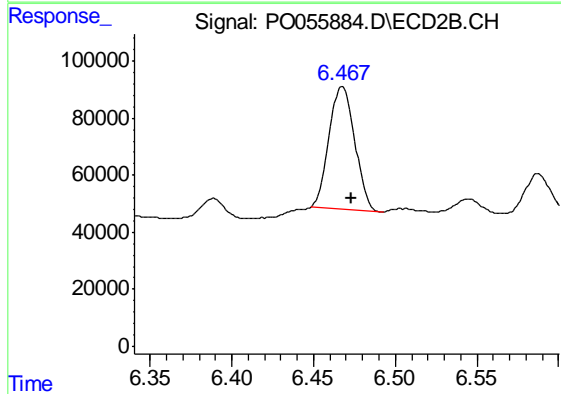
R.T.: 6.313 min
 Delta R.T.: -0.007 min
 Response: 697384
 Conc: 228.38 ng/ml



#33 AR-1260-3

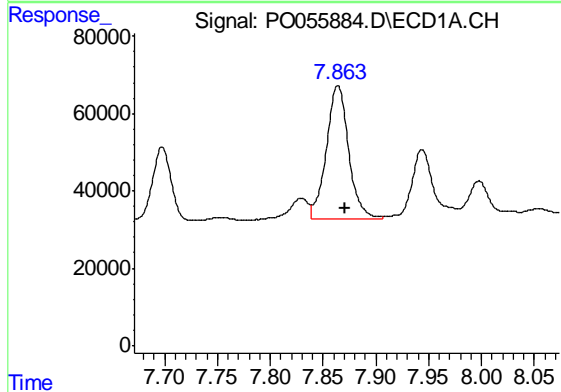
R.T.: 7.639 min
 Delta R.T.: -0.006 min
 Response: 408322
 Conc: 204.16 ng/ml

Instrument :
 ECD_O
 ClientSampleId :
 C-3_042419MSD



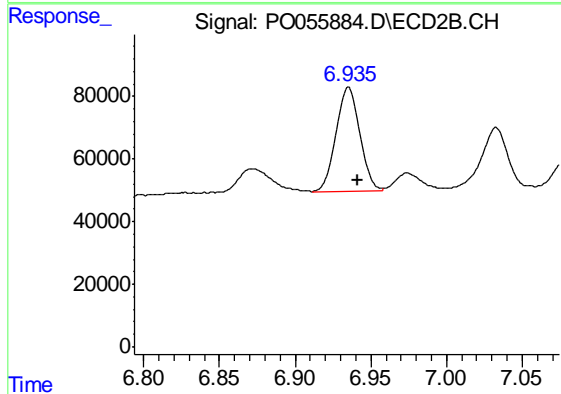
#33 AR-1260-3

R.T.: 6.467 min
 Delta R.T.: -0.006 min
 Response: 473018
 Conc: 189.81 ng/ml



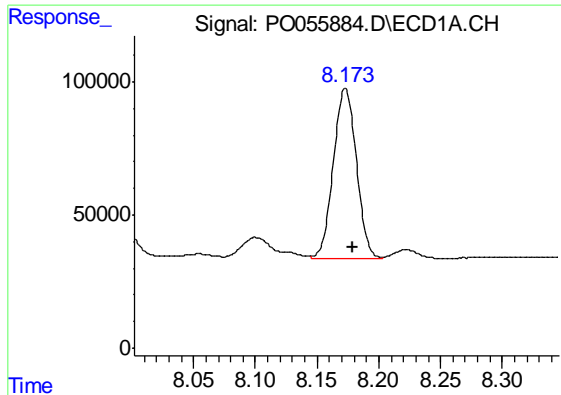
#34 AR-1260-4

R.T.: 7.864 min
 Delta R.T.: -0.006 min
 Response: 510199
 Conc: 220.62 ng/ml



#34 AR-1260-4

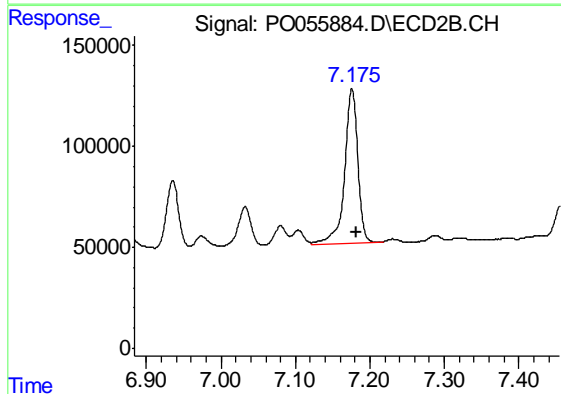
R.T.: 6.935 min
 Delta R.T.: -0.006 min
 Response: 374457
 Conc: 181.47 ng/ml



#35 AR-1260-5

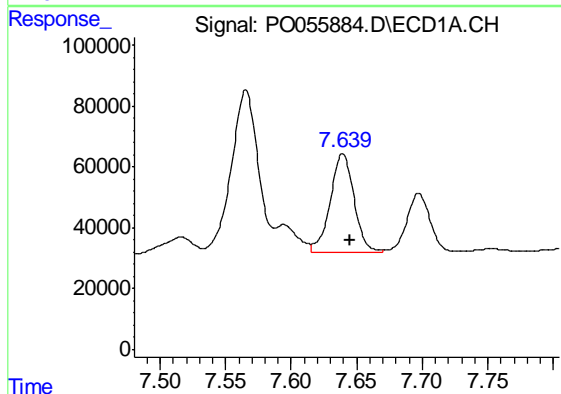
R.T.: 8.173 min
 Delta R.T.: -0.006 min
 Response: 841014
 Conc: 198.24 ng/ml

Instrument :
 ECD_O
 ClientSampleId :
 C-3_042419MSD



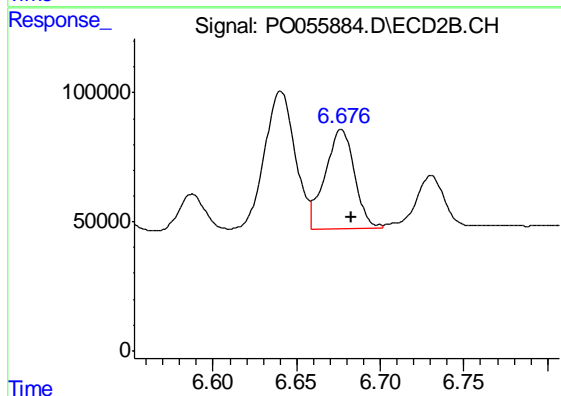
#35 AR-1260-5

R.T.: 7.176 min
 Delta R.T.: -0.006 min
 Response: 949270
 Conc: 189.01 ng/ml



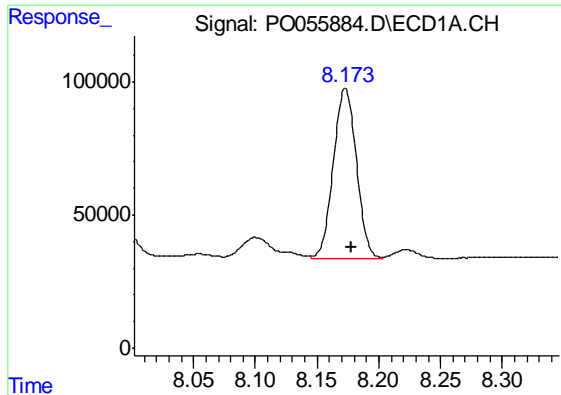
#36 AR-1262-1

R.T.: 7.639 min
 Delta R.T.: -0.005 min
 Response: 408322
 Conc: 127.37 ng/ml



#36 AR-1262-1

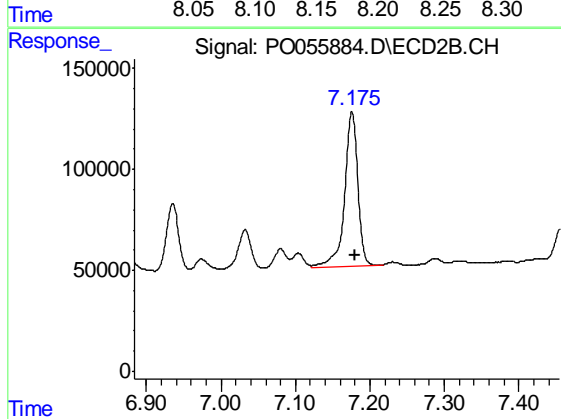
R.T.: 6.677 min
 Delta R.T.: -0.006 min
 Response: 469862
 Conc: 114.58 ng/ml



#37 AR-1262-2

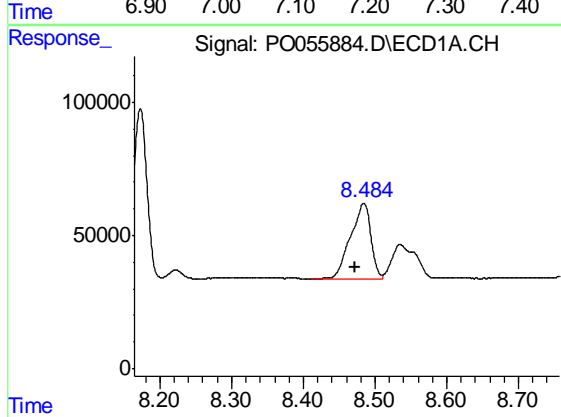
R.T.: 8.173 min
 Delta R.T.: -0.005 min
 Response: 841014
 Conc: 156.65 ng/ml

Instrument :
 ECD_O
 ClientSampleId :
 C-3_042419MSD



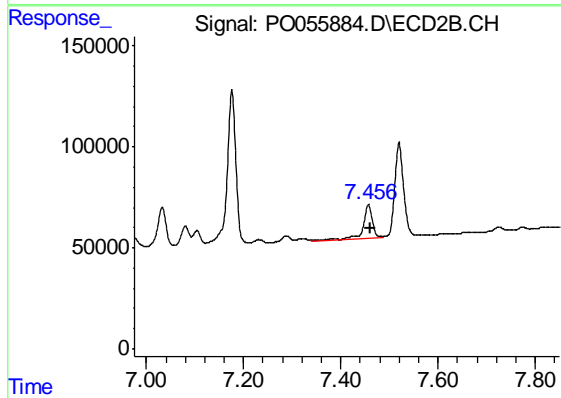
#37 AR-1262-2

R.T.: 7.176 min
 Delta R.T.: -0.005 min
 Response: 949270
 Conc: 151.81 ng/ml



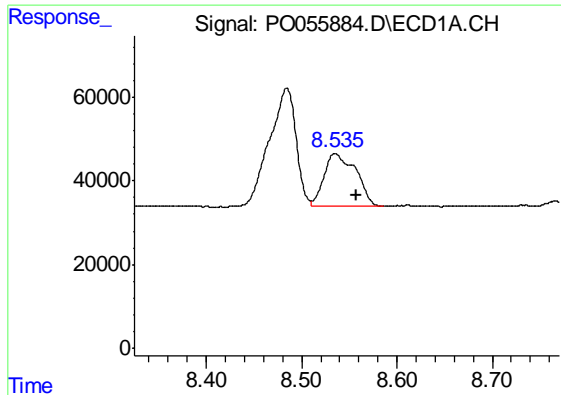
#38 AR-1262-3

R.T.: 8.485 min
 Delta R.T.: 0.012 min
 Response: 554180
 Conc: 152.71 ng/ml



#38 AR-1262-3

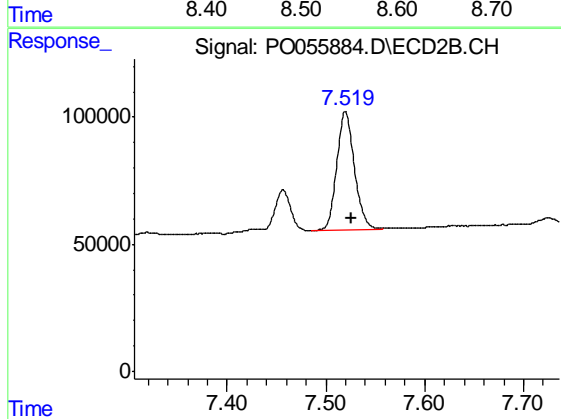
R.T.: 7.457 min
 Delta R.T.: -0.005 min
 Response: 212319
 Conc: 86.20 ng/ml



#39 AR-1262-4

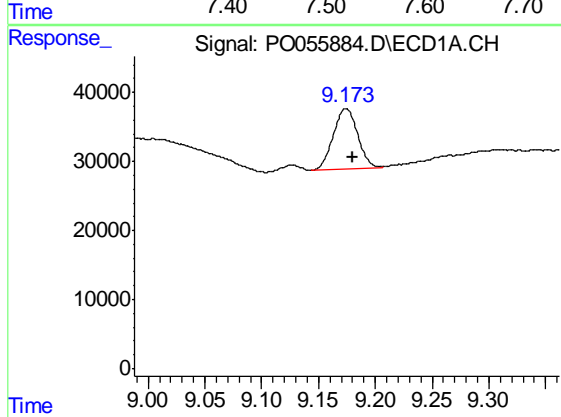
R.T.: 8.535 min
 Delta R.T.: -0.023 min
 Response: 293971
 Conc: 108.27 ng/ml

Instrument :
 ECD_O
 ClientSampleId :
 C-3_042419MSD



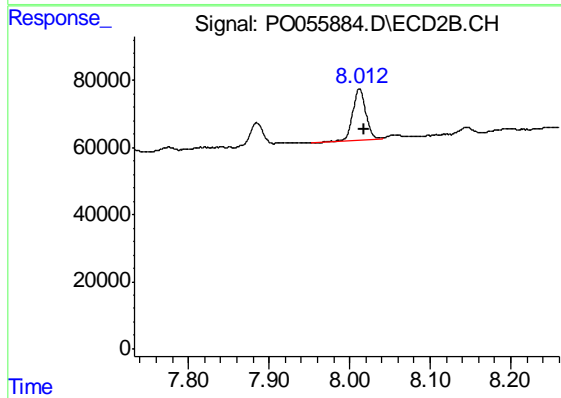
#39 AR-1262-4

R.T.: 7.520 min
 Delta R.T.: -0.007 min
 Response: 584063
 Conc: 142.63 ng/ml



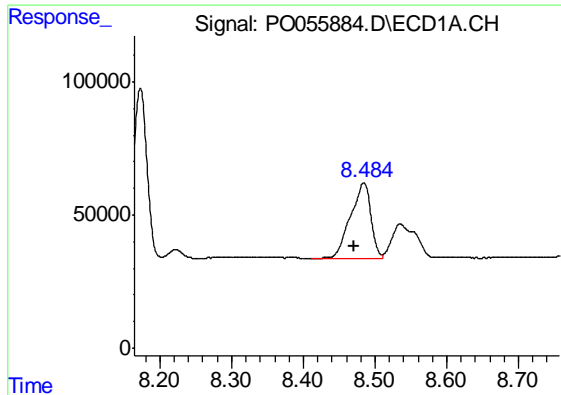
#40 AR-1262-5

R.T.: 9.174 min
 Delta R.T.: -0.006 min
 Response: 130629
 Conc: 72.31 ng/ml



#40 AR-1262-5

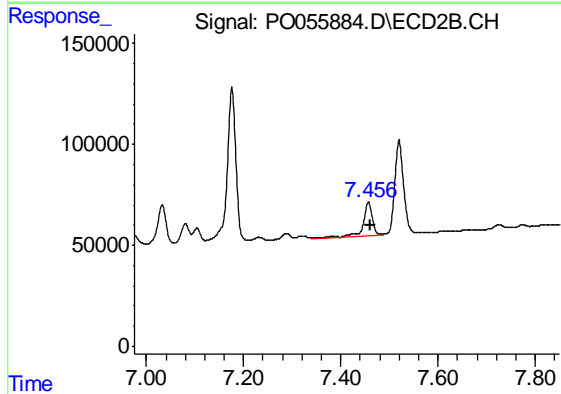
R.T.: 8.012 min
 Delta R.T.: -0.006 min
 Response: 176051
 Conc: 103.31 ng/ml



#41 AR-1268-1

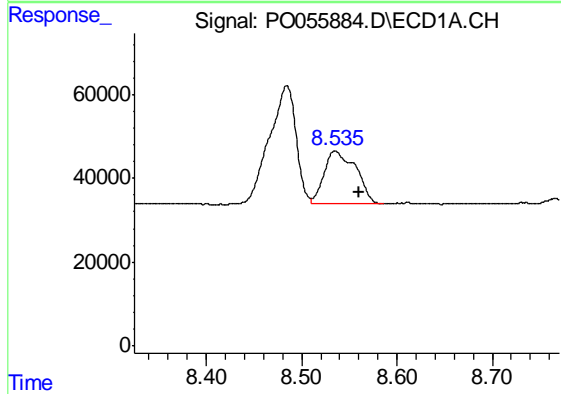
R.T.: 8.485 min
 Delta R.T.: 0.013 min
 Response: 554180
 Conc: 91.77 ng/ml

Instrument :
 ECD_O
 ClientSampleId :
 C-3_042419MSD



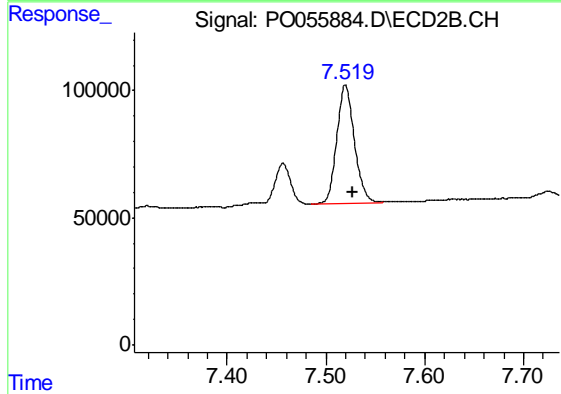
#41 AR-1268-1

R.T.: 7.457 min
 Delta R.T.: -0.004 min
 Response: 212319
 Conc: 30.64 ng/ml



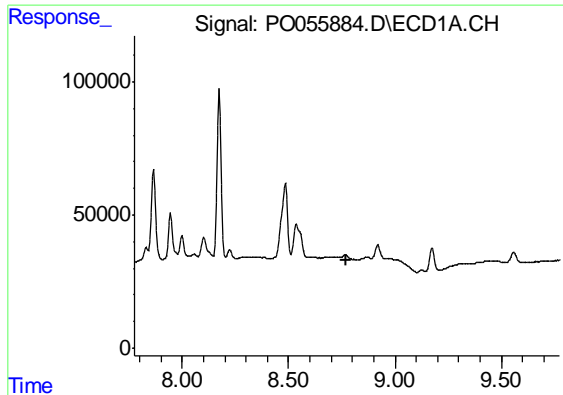
#42 AR-1268-2

R.T.: 8.535 min
 Delta R.T.: -0.026 min
 Response: 293971
 Conc: 53.71 ng/ml



#42 AR-1268-2

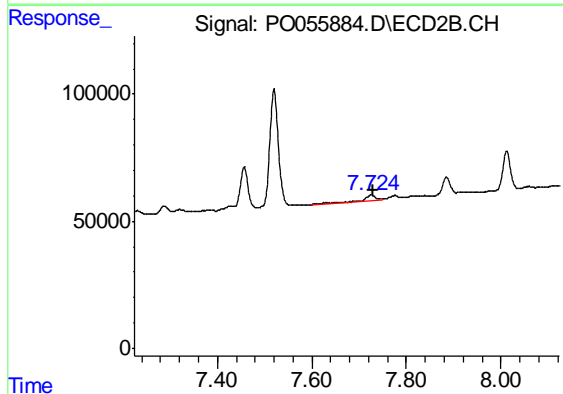
R.T.: 7.520 min
 Delta R.T.: -0.007 min
 Response: 584063
 Conc: 102.66 ng/ml



#43 AR-1268-3

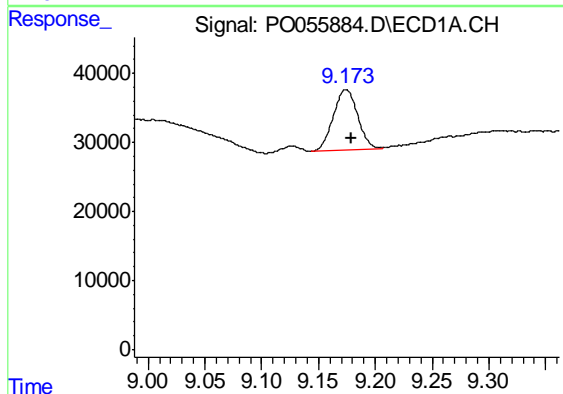
R.T.: 0.000 min
 Exp R.T. : 8.774 min
 Response: 0
 Conc: N.D.

Instrument :
 ECD_O
 ClientSampleId :
 C-3_042419MSD



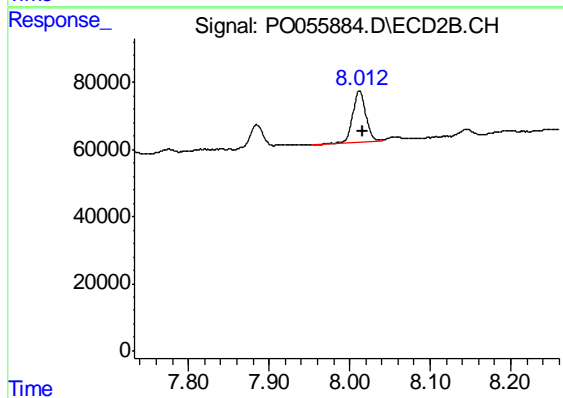
#43 AR-1268-3

R.T.: 7.725 min
 Delta R.T.: -0.006 min
 Response: 41273
 Conc: 8.74 ng/ml



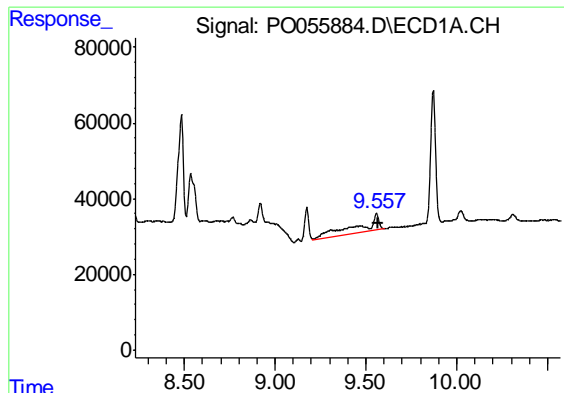
#44 AR-1268-4

R.T.: 9.174 min
 Delta R.T.: -0.005 min
 Response: 130629
 Conc: 66.57 ng/ml



#44 AR-1268-4

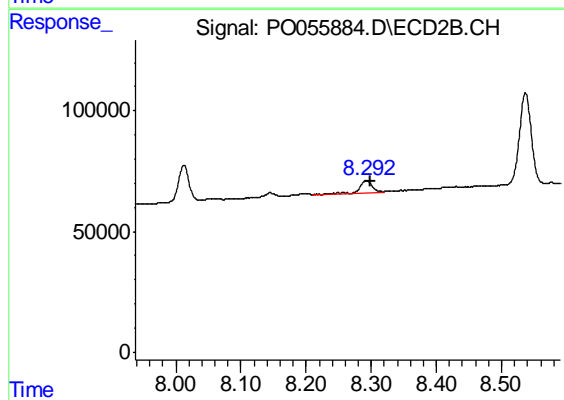
R.T.: 8.012 min
 Delta R.T.: -0.005 min
 Response: 176051
 Conc: 93.07 ng/ml



#45 AR-1268-5

R.T.: 9.558 min
Delta R.T.: -0.007 min
Response: 330944
Conc: 24.53 ng/ml

Instrument :
ECD_O
ClientSampleId :
C-3_042419MSD



#45 AR-1268-5

R.T.: 8.293 min
Delta R.T.: -0.005 min
Response: 73992
Conc: 6.08 ng/ml