

Data Path : Z:\pestpcbsrv\HPCHEM1\ECD_0\Data\P0050619\
 Data File : P0055901.D
 Signal(s) : Signal #1: ECD1A.CH Signal #2: ECD2B.CH
 Acq On : 06 May 2019 17:26
 Operator : SM/SJ
 Sample : PB119481BSD
 Misc :
 ALS Vial : 29 Sample Multiplier: 1

Instrument :
 ECD_0
 ClientSampleId :
 PB119481BSD

Integration File signal 1: autoint1.e
 Integration File signal 2: autoint2.e
 Quant Time: May 07 02:34:19 2019
 Quant Method : Z:\pestpcbsrv\HPCHEM1\ECD_0\methods\P0050319.M
 Quant Title : GC EXTRACTABLES
 QLast Update : Fri May 03 15:20:04 2019
 Response via : Initial Calibration
 Integrator: ChemStation 6890 Scale Mode: Small noise peaks clipped

Volume Inj. : 2 µl
 Signal #1 Phase : ZB-MR1 Signal #2 Phase: ZB-MR2
 Signal #1 Info : 30Mx0.32mmx 0.50µ Signal #2 Info : 30M x 0.32mm x 0.25µm

Compound	RT#1	RT#2	Resp#1	Resp#2	ng/ml	ng/ml
System Monitoring Compounds						
1) SA Tetrachlo...	4.274	3.588	620466	565378	20.734	20.018
2) SA Decachlor...	9.870	8.536	866120	629535	23.148	23.279
Target Compounds						
3) L1 AR-1016-1	5.435	4.660	368567	323985	259.350	241.076
4) L1 AR-1016-2	5.457	4.678	514919	437149	260.208	239.409
5) L1 AR-1016-3	5.518	4.852	331665	241668	258.762	241.155
6) L1 AR-1016-4	5.617	4.893	273121	192763	261.303	236.916
7) L1 AR-1016-5	5.908	5.105	282769	257672	251.012	234.065
8) L2 AR-1221-1	4.478	3.798	25754	21541	59.240	58.673
9) L2 AR-1221-2	4.571	3.884	40390	32874	120.446	118.530
10) L2 AR-1221-3	4.646	3.959	156283	126451	155.415	142.319
11) L3 AR-1232-1	4.646	3.959	156283	126451	181.957	170.862
12) L3 AR-1232-2	5.169	4.678	236226	437149	486.948	498.772
13) L3 AR-1232-3	5.457	4.852	514919	241668	532.224	503.822
14) L3 AR-1232-4	5.617	4.934	273121	236303	537.069	556.316
15) L3 AR-1232-5	5.706	5.105	251930	257672	580.251	531.715
16) L4 AR-1242-1	5.435	4.660	368567	323985	304.401	289.112
17) L4 AR-1242-2	5.457	4.678	514919	437149	304.975	287.324
18) L4 AR-1242-3	5.518	4.852	331665	241668	302.741	279.058
19) L4 AR-1242-4	5.617	4.934	273121	236303	303.528	282.084
20) L4 AR-1242-5	6.348	5.453	44115	215003	40.326	179.110 #
21) L5 AR-1248-1	5.435	4.660	368567	323985	407.203	386.373
22) L5 AR-1248-2	5.706	4.893	251930	192763	188.907	175.436
23) L5 AR-1248-3	5.908	4.934	282769	236303	191.484	208.169
24) L5 AR-1248-4	6.309	5.105	47475	257672	27.226	183.504 #
25) L5 AR-1248-5	6.348	5.494	44115	31416	26.411	20.976
26) L6 AR-1254-1	6.282	5.453	224733	215003	107.024	80.335
27) L6 AR-1254-2	6.499	5.599	257157	217357	77.484	88.982
28) L6 AR-1254-3	6.865	6.013	159379	401266	43.839	101.135 #
29) L6 AR-1254-4	7.148	6.227	95850	42886	35.230	15.995 #
30) L6 AR-1254-5	7.565	6.640	829277	746661	289.338	206.335 #
31) L7 AR-1260-1	7.026	6.127	594511	541305	275.301	245.692
32) L7 AR-1260-2	7.282	6.314	699529	687276	267.109	225.073
33) L7 AR-1260-3	7.639	6.467	453921	569063	226.962	228.353
34) L7 AR-1260-4	7.863	6.934	541941	450857	234.342	218.494
35) L7 AR-1260-5	8.173	7.175	938327	1062730	221.183	211.603
36) L8 AR-1262-1	7.639	6.676	453921	548385	141.592	133.727
37) L8 AR-1262-2	8.173	7.175	938327	1062730	174.777	169.960
38) L8 AR-1262-3	8.483	7.456	613975	211220	169.192	85.758 #
39) L8 AR-1262-4	8.534	7.519	336138	682601	123.804	166.693 #
40) L8 AR-1262-5	9.173	8.012	208954	196858	115.667	115.518
41) L9 AR-1268-1	8.483	7.456	613975	211220	101.671	30.485 #

Data Path : Z:\pestpcbsrv\HPCHEM1\ECD_0\Data\P0050619\
 Data File : P0055901.D
 Signal(s) : Signal #1: ECD1A.CH Signal #2: ECD2B.CH
 Acq On : 06 May 2019 17:26
 Operator : SM/SJ
 Sample : PB119481BSD
 Misc :
 ALS Vial : 29 Sample Multiplier: 1

Instrument :
 ECD_0
 ClientSampleId :
 PB119481BSD

Integration File signal 1: autoint1.e
 Integration File signal 2: autoint2.e
 Quant Time: May 07 02:34:19 2019
 Quant Method : Z:\pestpcbsrv\HPCHEM1\ECD_0\methods\P0050319.M
 Quant Title : GC EXTRACTABLES
 QLast Update : Fri May 03 15:20:04 2019
 Response via : Initial Calibration
 Integrator: ChemStation 6890 Scale Mode: Small noise peaks clipped

Volume Inj. : 2 µl
 Signal #1 Phase : ZB-MR1 Signal #2 Phase: ZB-MR2
 Signal #1 Info : 30Mx0.32mmx 0.50µ Signal #2 Info : 30M x 0.32mm x 0.25µm

	Compound	RT#1	RT#2	Resp#1	Resp#2	ng/ml	ng/ml
42)	L9 AR-1268-2	8.534	7.519	336138	682601	61.410	119.983 #
43)	L9 AR-1268-3	0.000	7.725	0	17803	N.D.	3.769 #
44)	L9 AR-1268-4	9.173	8.012	208954	196858	106.489	104.064
45)	L9 AR-1268-5	9.558	8.293	75532	60758	5.599	4.989

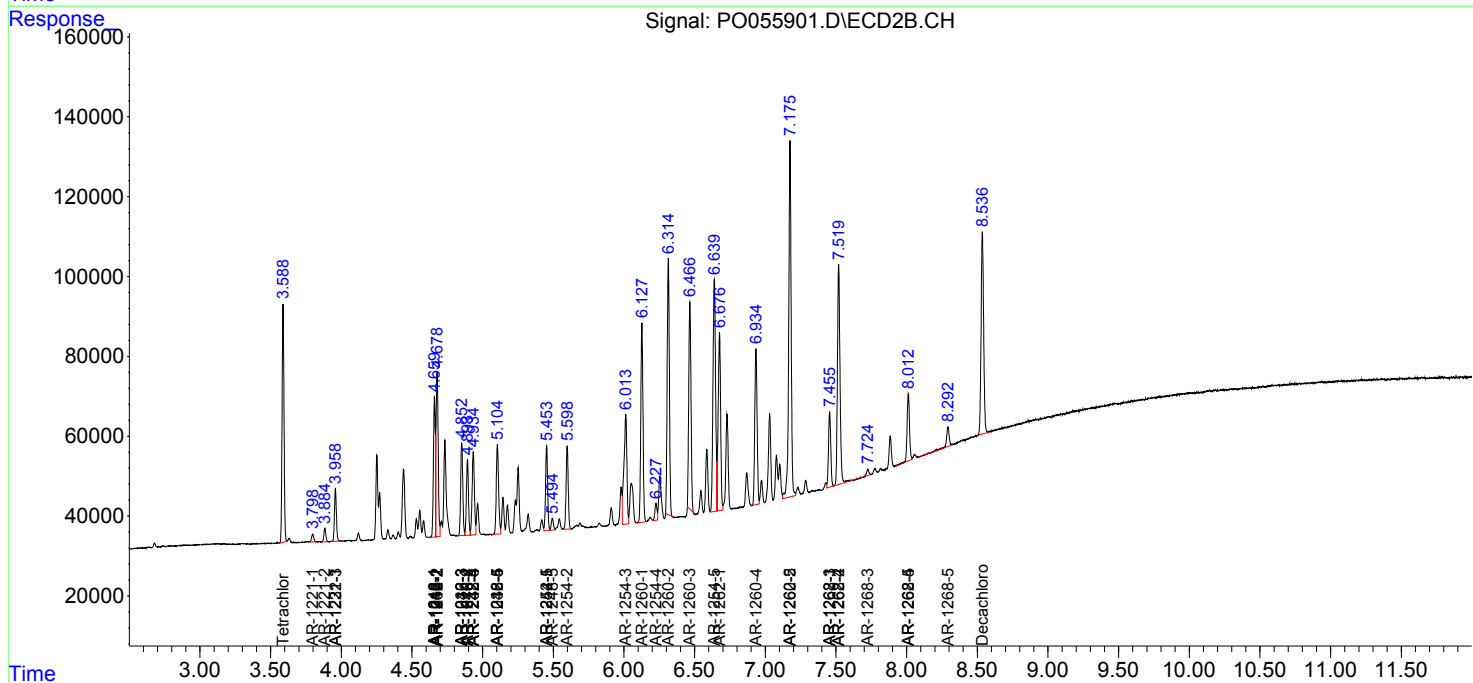
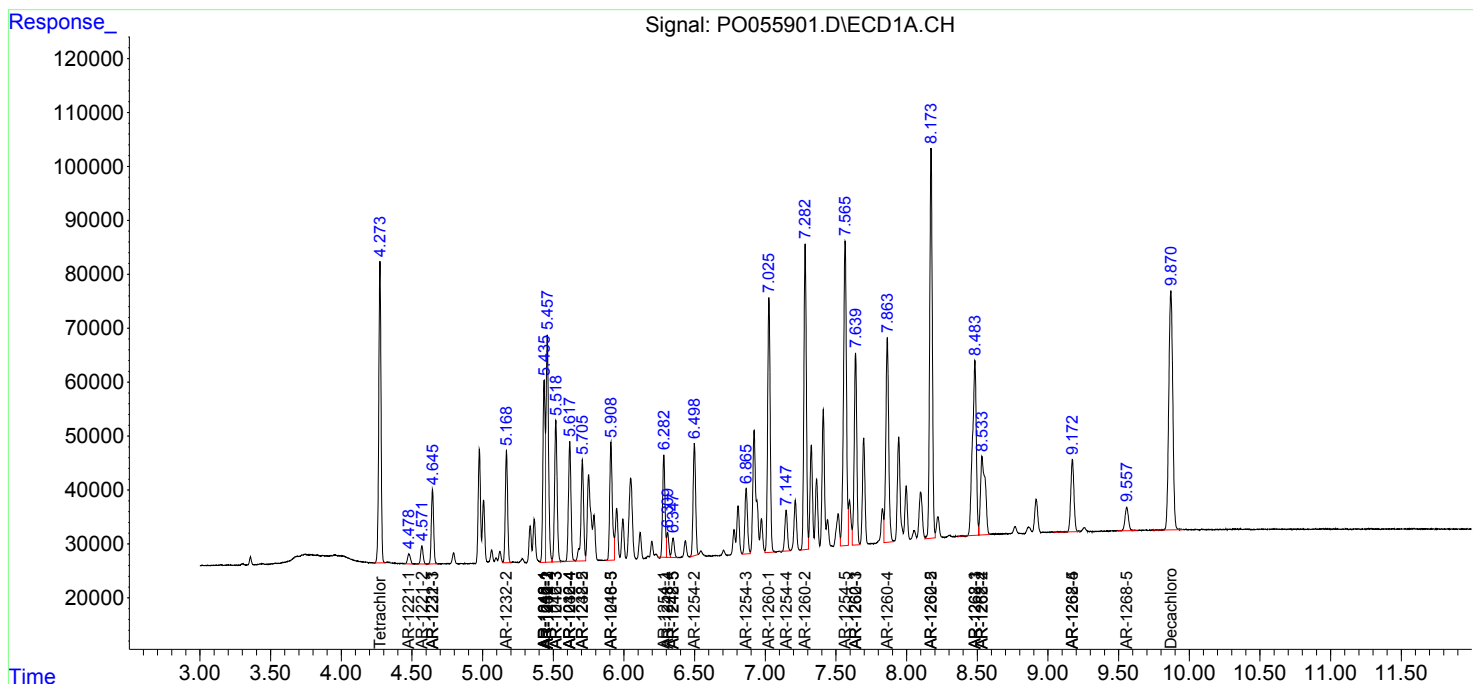
(f)=RT Delta > 1/2 Window (#)=Amounts differ by > 25% (m)=manual int.

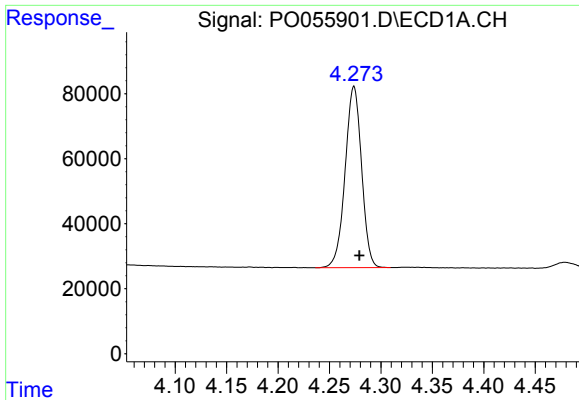
Data Path : Z:\pestpcbsrv\HPCHEM1\ECD_O\Data\P0050619\
 Data File : P0055901.D
 Signal(s) : Signal #1: ECD1A.CH Signal #2: ECD2B.CH
 Acq On : 06 May 2019 17:26
 Operator : SM/SJ
 Sample : PB119481BSD
 Misc :
 ALS Vial : 29 Sample Multiplier: 1

Instrument :
 ECD_O
 ClientSampled :
 PB119481BSD

Integration File signal 1: autoint1.e
 Integration File signal 2: autoint2.e
 Quant Time: May 07 02:34:19 2019
 Quant Method : Z:\pestpcbsrv\HPCHEM1\ECD_O\methods\P0050319.M
 Quant Title : GC EXTRACTABLES
 QLast Update : Fri May 03 15:20:04 2019
 Response via : Initial Calibration
 Integrator: ChemStation 6890 Scale Mode: Small noise peaks clipped

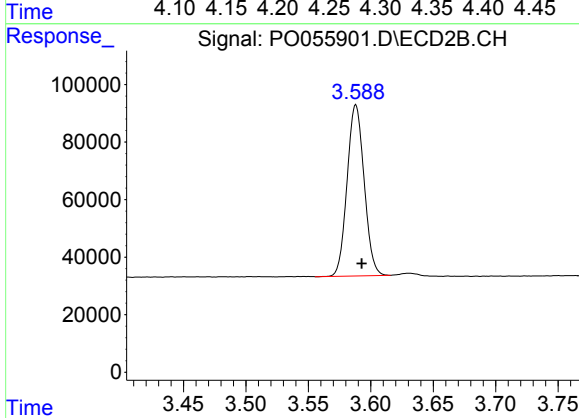
Volume Inj. : 2 µl
 Signal #1 Phase : ZB-MR1 Signal #2 Phase: ZB-MR2
 Signal #1 Info : 30Mx0.32mmx 0.50µ Signal #2 Info : 30M x 0.32mm x 0.25µm



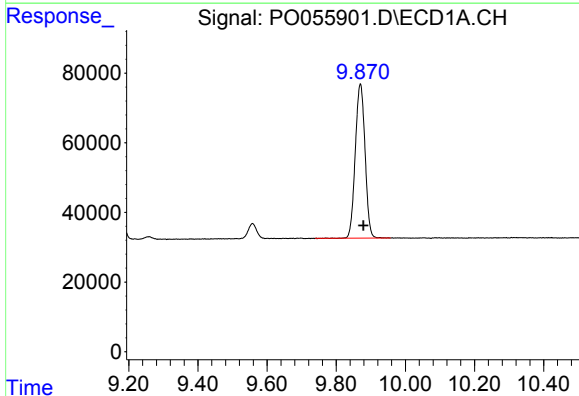


#1 Tetrachloro-m-xylene
 R.T.: 4.274 min
 Delta R.T.: -0.005 min
 Response: 620466
 Conc: 20.73 ng/ml

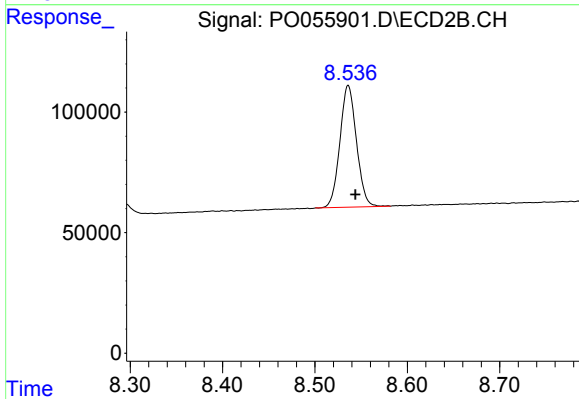
Instrument :
 ECD_O
 ClientSampleId :
 PB119481BSD



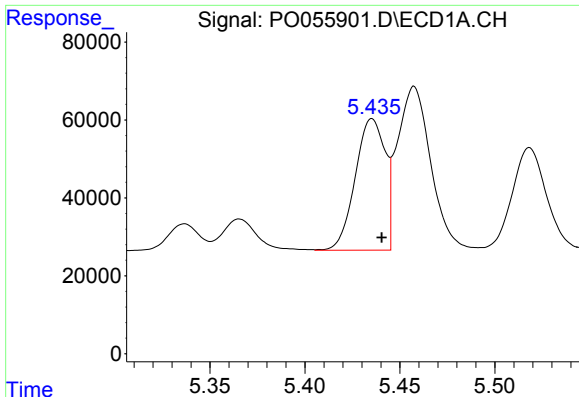
#1 Tetrachloro-m-xylene
 R.T.: 3.588 min
 Delta R.T.: -0.005 min
 Response: 565378
 Conc: 20.02 ng/ml



#2 Decachlorobiphenyl
 R.T.: 9.870 min
 Delta R.T.: -0.009 min
 Response: 866120
 Conc: 23.15 ng/ml



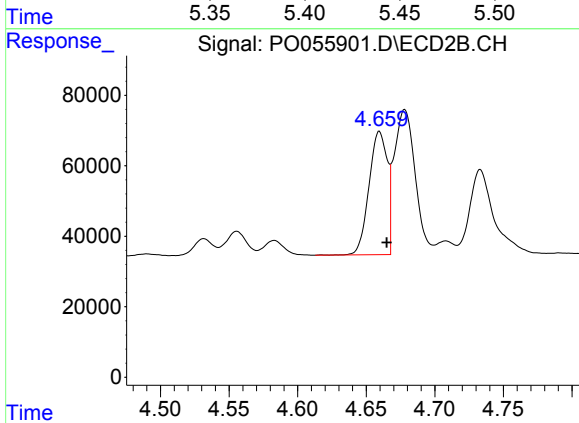
#2 Decachlorobiphenyl
 R.T.: 8.536 min
 Delta R.T.: -0.008 min
 Response: 629535
 Conc: 23.28 ng/ml



#3 AR-1016-1

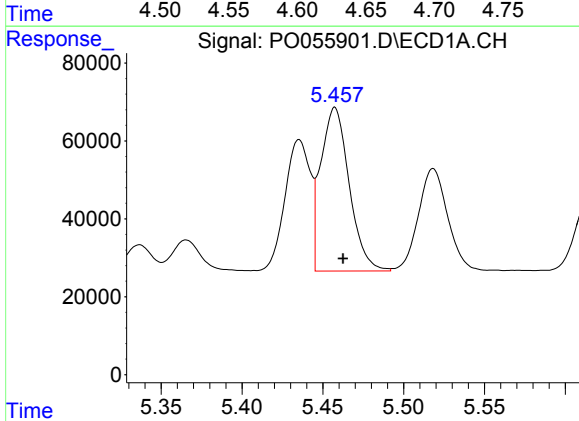
R.T.: 5.435 min
 Delta R.T.: -0.005 min
 Response: 368567
 Conc: 259.35 ng/ml

Instrument :
 ECD_O
 ClientSampleId :
 PB119481BSD



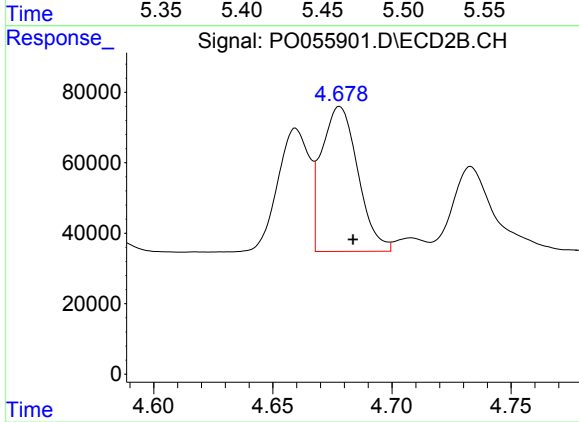
#3 AR-1016-1

R.T.: 4.660 min
 Delta R.T.: -0.005 min
 Response: 323985
 Conc: 241.08 ng/ml



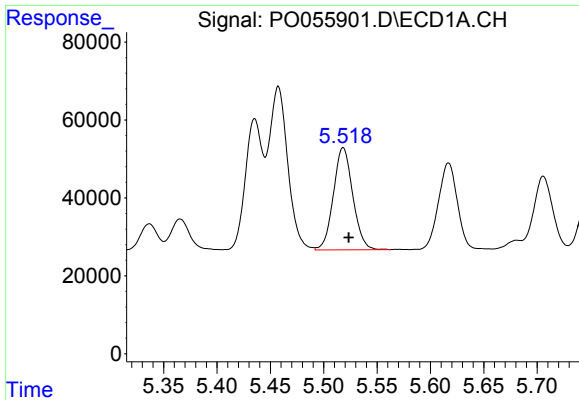
#4 AR-1016-2

R.T.: 5.457 min
 Delta R.T.: -0.005 min
 Response: 514919
 Conc: 260.21 ng/ml



#4 AR-1016-2

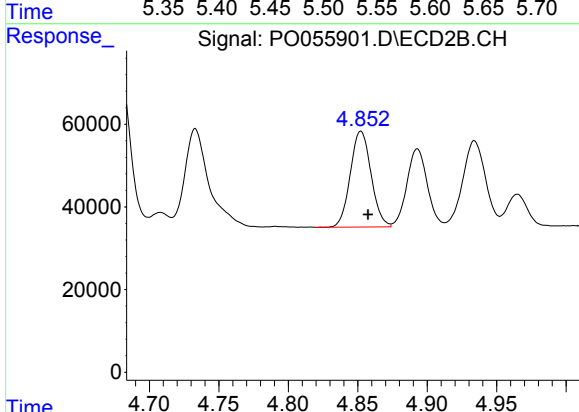
R.T.: 4.678 min
 Delta R.T.: -0.006 min
 Response: 437149
 Conc: 239.41 ng/ml



#5 AR-1016-3

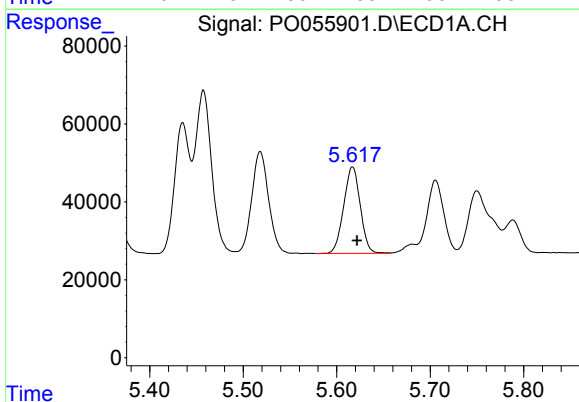
R.T.: 5.518 min
 Delta R.T.: -0.005 min
 Response: 331665
 Conc: 258.76 ng/ml

Instrument :
 ECD_O
 ClientSampleId :
 PB119481BSD



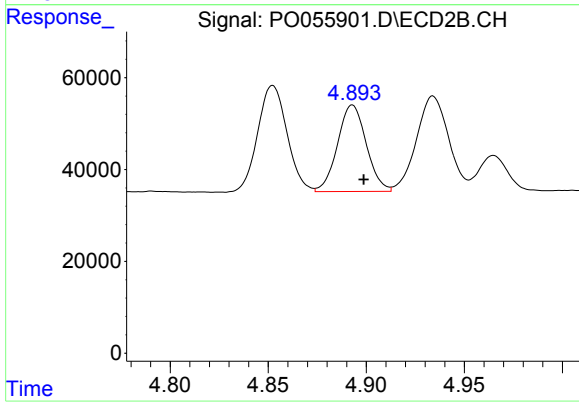
#5 AR-1016-3

R.T.: 4.852 min
 Delta R.T.: -0.005 min
 Response: 241668
 Conc: 241.16 ng/ml



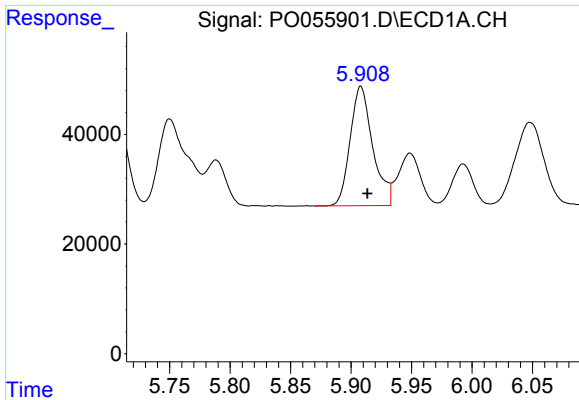
#6 AR-1016-4

R.T.: 5.617 min
 Delta R.T.: -0.005 min
 Response: 273121
 Conc: 261.30 ng/ml



#6 AR-1016-4

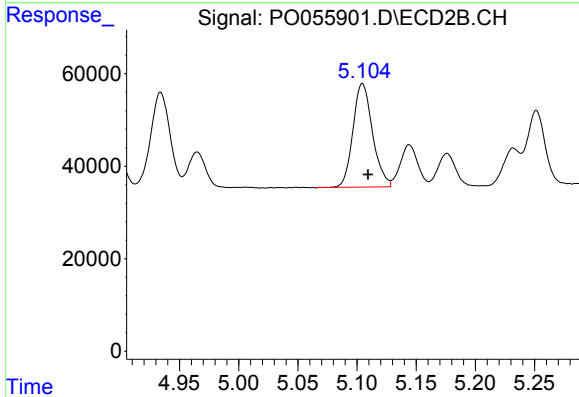
R.T.: 4.893 min
 Delta R.T.: -0.006 min
 Response: 192763
 Conc: 236.92 ng/ml



#7 AR-1016-5

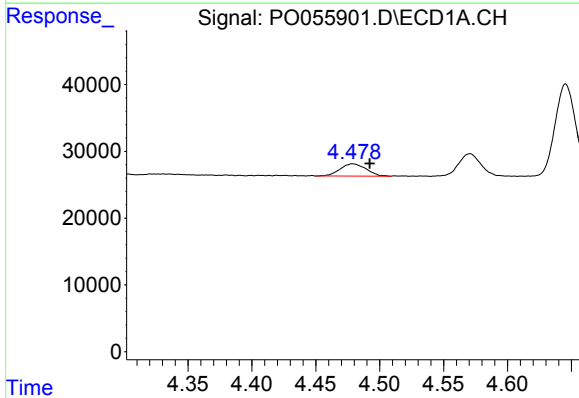
R.T.: 5.908 min
 Delta R.T.: -0.005 min
 Response: 282769
 Conc: 251.01 ng/ml

Instrument :
 ECD_O
ClientSampled :
 PB119481BSD



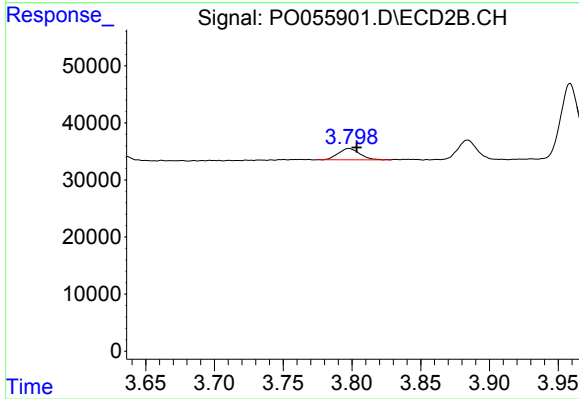
#7 AR-1016-5

R.T.: 5.105 min
 Delta R.T.: -0.005 min
 Response: 257672
 Conc: 234.06 ng/ml



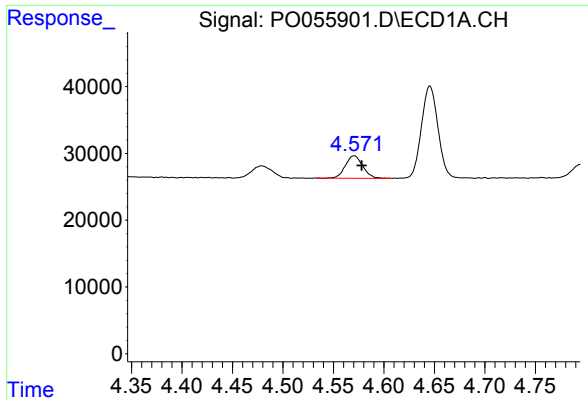
#8 AR-1221-1

R.T.: 4.478 min
 Delta R.T.: -0.014 min
 Response: 25754
 Conc: 59.24 ng/ml



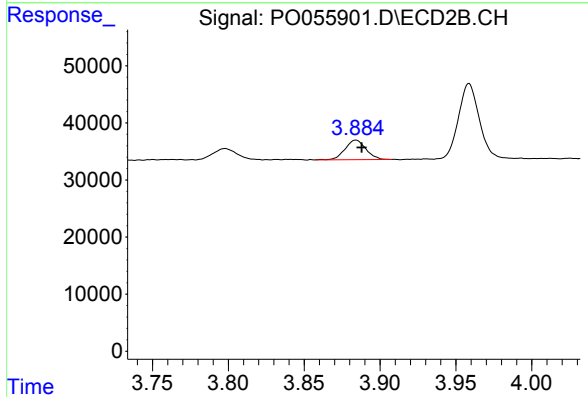
#8 AR-1221-1

R.T.: 3.798 min
 Delta R.T.: -0.006 min
 Response: 21541
 Conc: 58.67 ng/ml

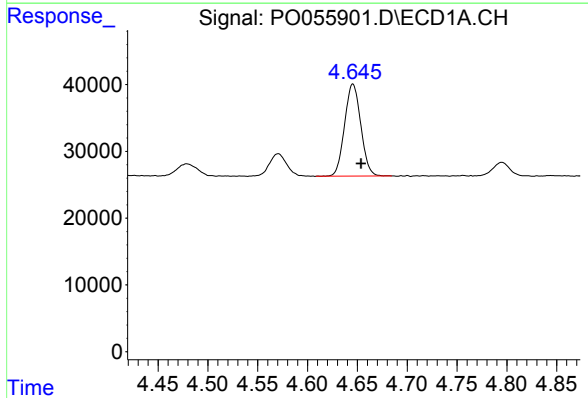


#9 AR-1221-2
 R.T.: 4.571 min
 Delta R.T.: -0.007 min
 Response: 40390
 Conc: 120.45 ng/ml

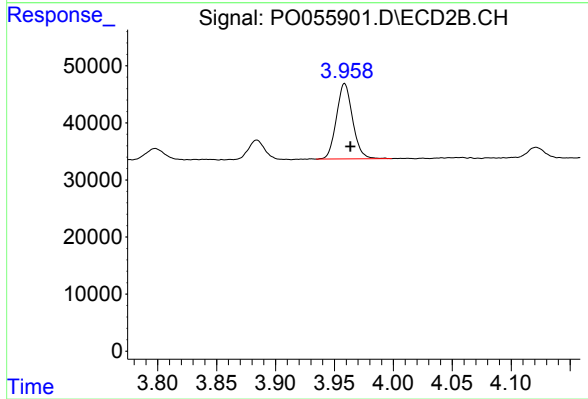
Instrument :
 ECD_O
 ClientSampleId :
 PB119481BSD



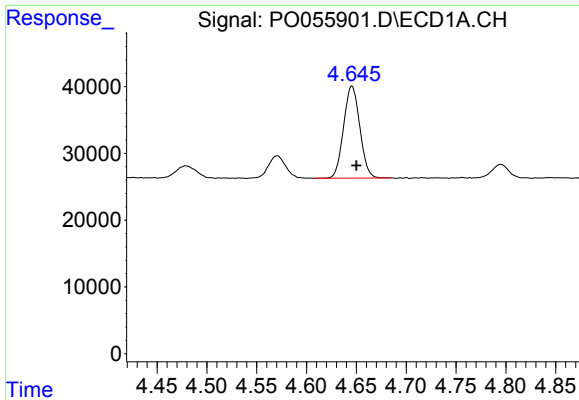
#9 AR-1221-2
 R.T.: 3.884 min
 Delta R.T.: -0.004 min
 Response: 32874
 Conc: 118.53 ng/ml



#10 AR-1221-3
 R.T.: 4.646 min
 Delta R.T.: -0.008 min
 Response: 156283
 Conc: 155.41 ng/ml



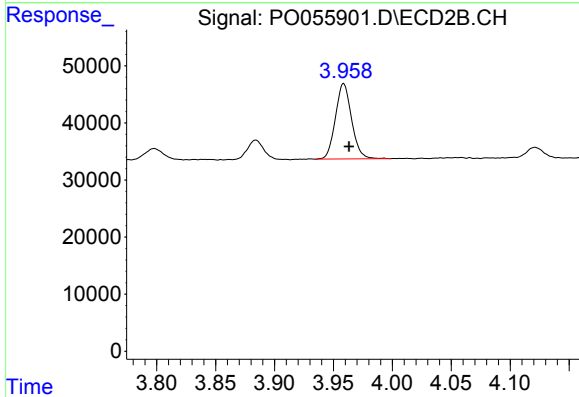
#10 AR-1221-3
 R.T.: 3.959 min
 Delta R.T.: -0.005 min
 Response: 126451
 Conc: 142.32 ng/ml



#11 AR-1232-1

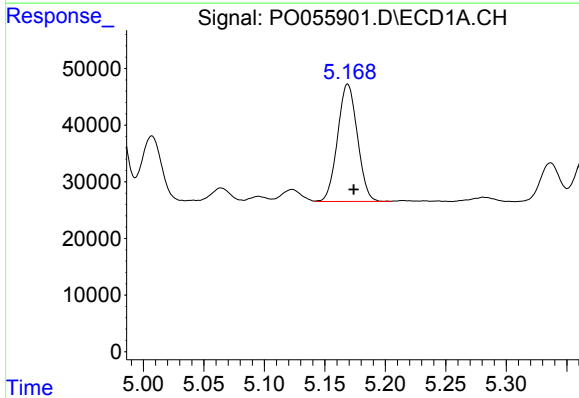
R.T.: 4.646 min
 Delta R.T.: -0.005 min
 Response: 156283
 Conc: 181.96 ng/ml

Instrument :
 ECD_O
 ClientSampleId :
 PB119481BSD



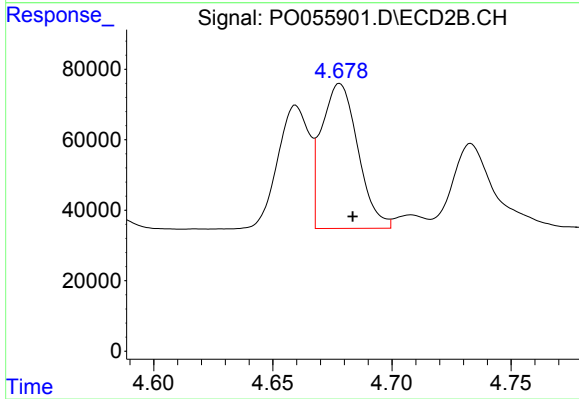
#11 AR-1232-1

R.T.: 3.959 min
 Delta R.T.: -0.005 min
 Response: 126451
 Conc: 170.86 ng/ml



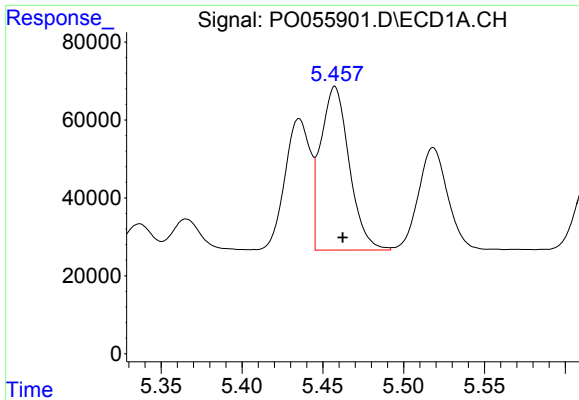
#12 AR-1232-2

R.T.: 5.169 min
 Delta R.T.: -0.005 min
 Response: 236226
 Conc: 486.95 ng/ml



#12 AR-1232-2

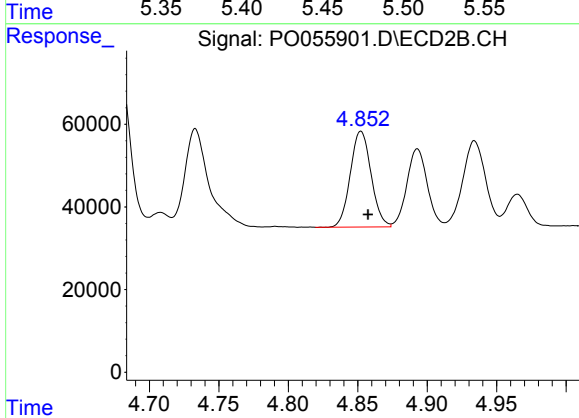
R.T.: 4.678 min
 Delta R.T.: -0.005 min
 Response: 437149
 Conc: 498.77 ng/ml



#13 AR-1232-3

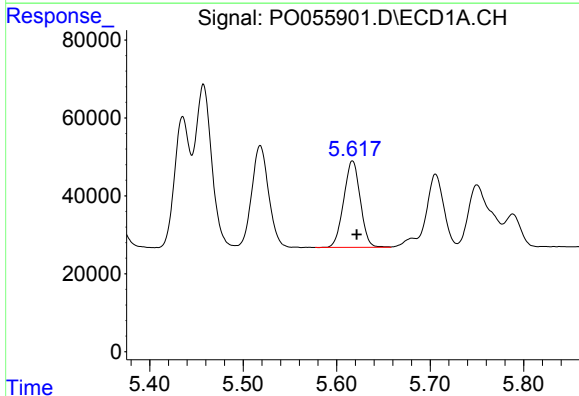
R.T.: 5.457 min
 Delta R.T.: -0.005 min
 Response: 514919
 Conc: 532.22 ng/ml

Instrument :
 ECD_O
 ClientSampleId :
 PB119481BSD



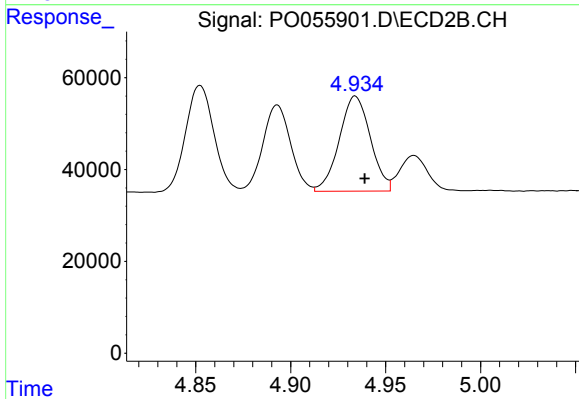
#13 AR-1232-3

R.T.: 4.852 min
 Delta R.T.: -0.005 min
 Response: 241668
 Conc: 503.82 ng/ml



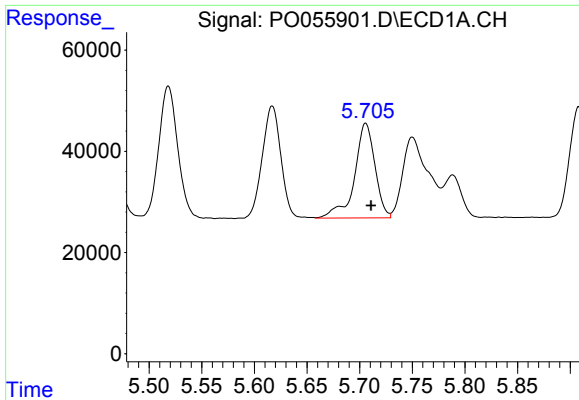
#14 AR-1232-4

R.T.: 5.617 min
 Delta R.T.: -0.005 min
 Response: 273121
 Conc: 537.07 ng/ml



#14 AR-1232-4

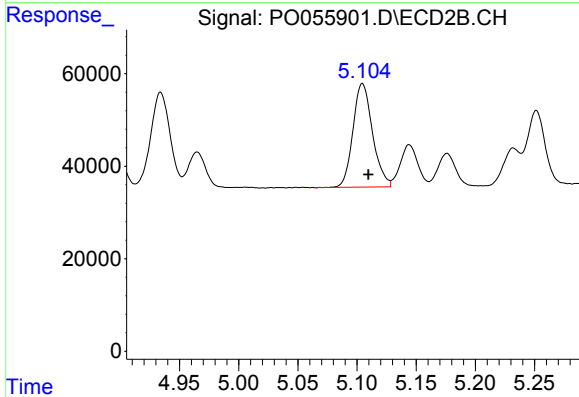
R.T.: 4.934 min
 Delta R.T.: -0.005 min
 Response: 236303
 Conc: 556.32 ng/ml



#15 AR-1232-5

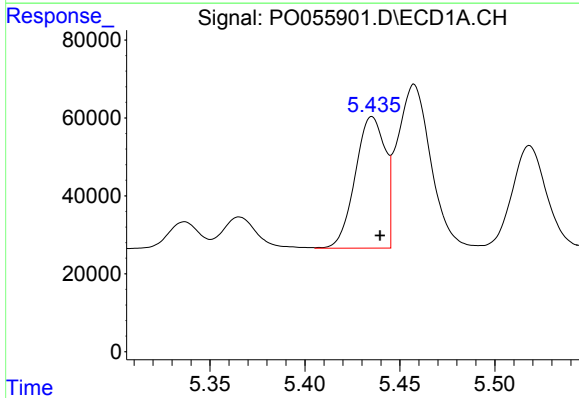
R.T.: 5.706 min
 Delta R.T.: -0.005 min
 Response: 251930
 Conc: 580.25 ng/ml

Instrument :
 ECD_O
ClientSampleId :
 PB119481BSD



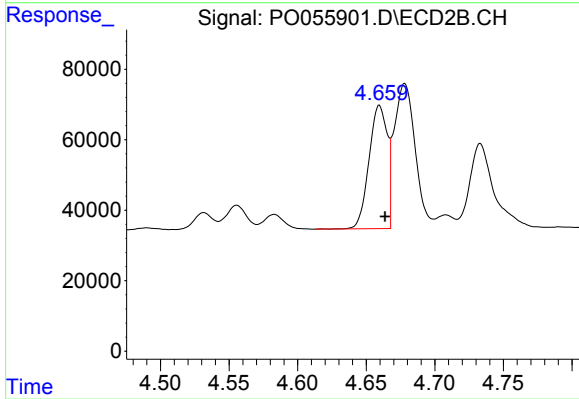
#15 AR-1232-5

R.T.: 5.105 min
 Delta R.T.: -0.005 min
 Response: 257672
 Conc: 531.71 ng/ml



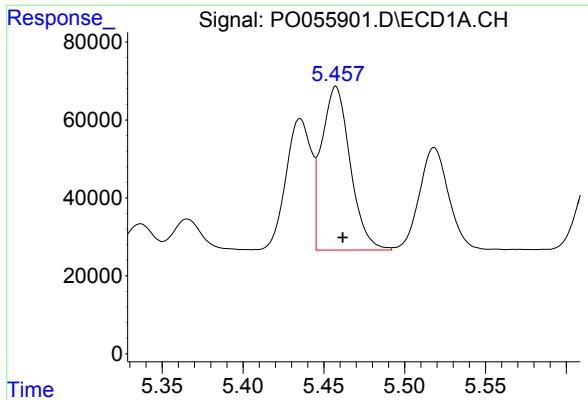
#16 AR-1242-1

R.T.: 5.435 min
 Delta R.T.: -0.004 min
 Response: 368567
 Conc: 304.40 ng/ml



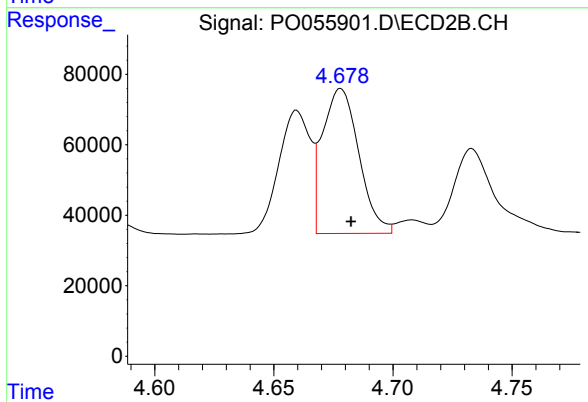
#16 AR-1242-1

R.T.: 4.660 min
 Delta R.T.: -0.004 min
 Response: 323985
 Conc: 289.11 ng/ml

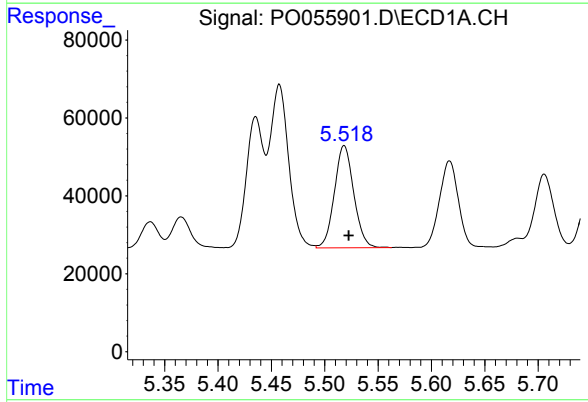


#17 AR-1242-2
 R.T.: 5.457 min
 Delta R.T.: -0.004 min
 Response: 514919
 Conc: 304.98 ng/ml

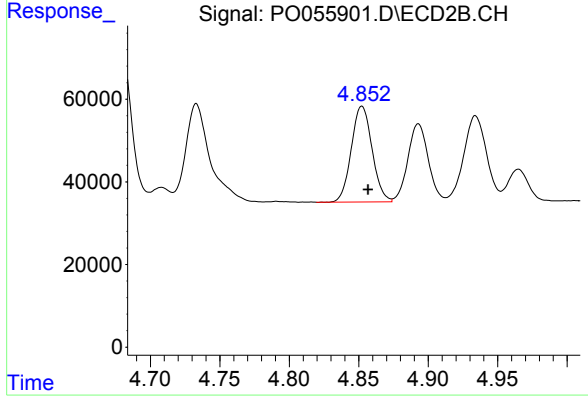
Instrument :
 ECD_O
 ClientSampleId :
 PB119481BSD



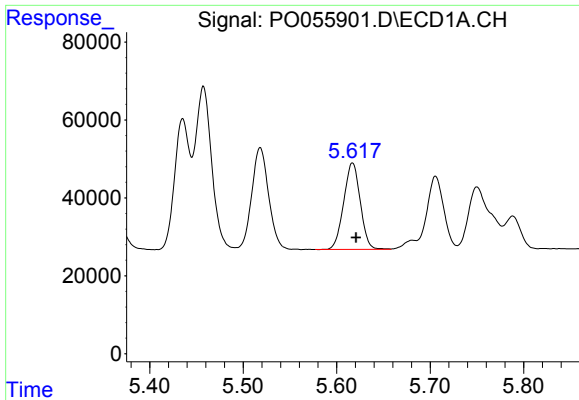
#17 AR-1242-2
 R.T.: 4.678 min
 Delta R.T.: -0.004 min
 Response: 437149
 Conc: 287.32 ng/ml



#18 AR-1242-3
 R.T.: 5.518 min
 Delta R.T.: -0.004 min
 Response: 331665
 Conc: 302.74 ng/ml

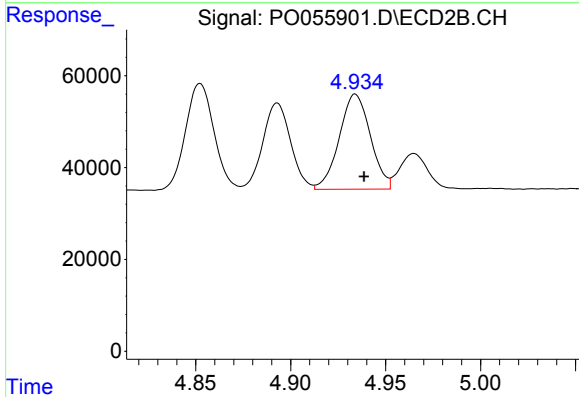


#18 AR-1242-3
 R.T.: 4.852 min
 Delta R.T.: -0.004 min
 Response: 241668
 Conc: 279.06 ng/ml

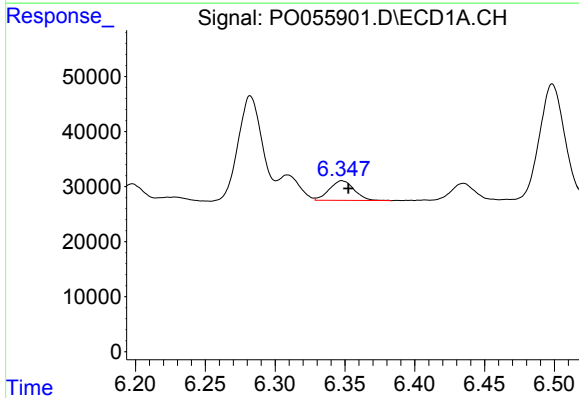


#19 AR-1242-4
 R.T.: 5.617 min
 Delta R.T.: -0.004 min
 Response: 273121
 Conc: 303.53 ng/ml

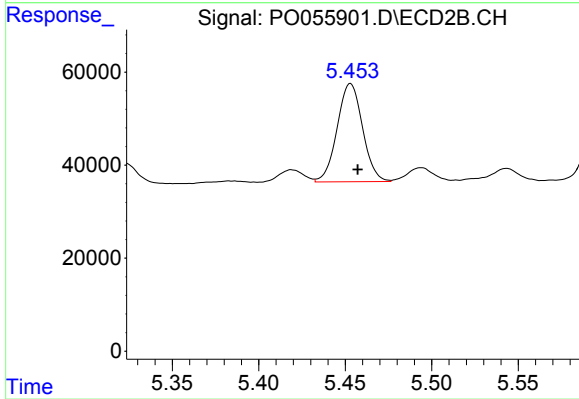
Instrument :
 ECD_O
ClientSampleId :
 PB119481BSD



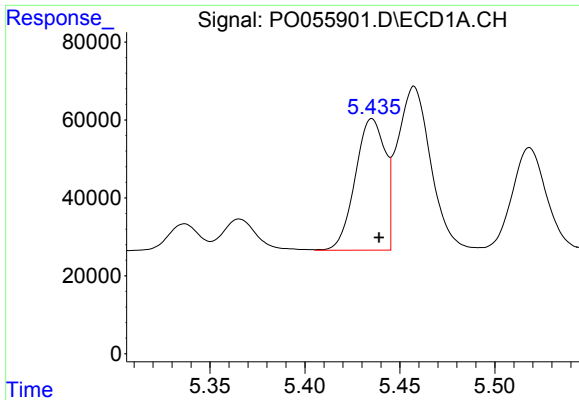
#19 AR-1242-4
 R.T.: 4.934 min
 Delta R.T.: -0.005 min
 Response: 236303
 Conc: 282.08 ng/ml



#20 AR-1242-5
 R.T.: 6.348 min
 Delta R.T.: -0.004 min
 Response: 44115
 Conc: 40.33 ng/ml



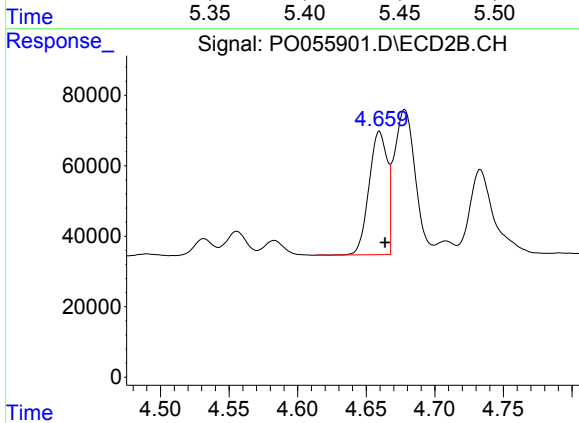
#20 AR-1242-5
 R.T.: 5.453 min
 Delta R.T.: -0.004 min
 Response: 215003
 Conc: 179.11 ng/ml



#21 AR-1248-1

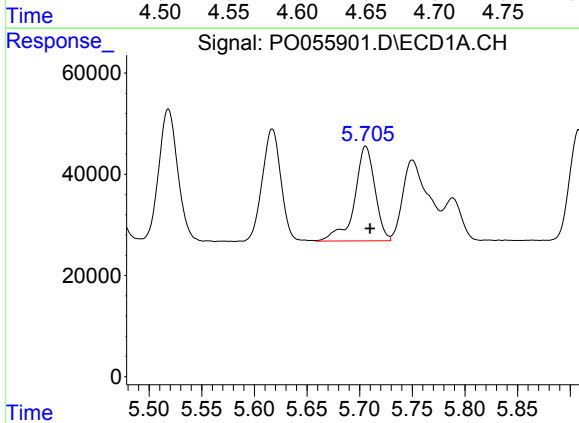
R.T.: 5.435 min
 Delta R.T.: -0.004 min
 Response: 368567
 Conc: 407.20 ng/ml

Instrument :
 ECD_O
 ClientSampleId :
 PB119481BSD



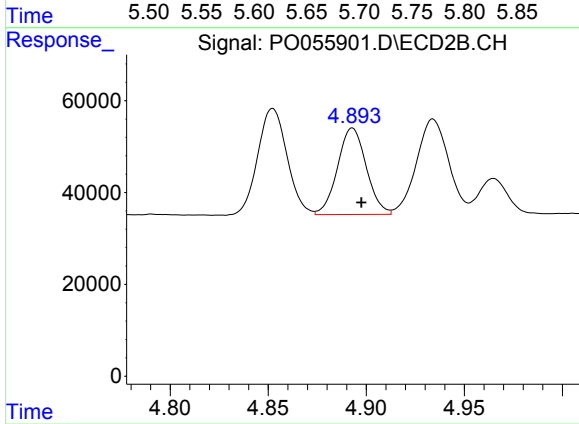
#21 AR-1248-1

R.T.: 4.660 min
 Delta R.T.: -0.004 min
 Response: 323985
 Conc: 386.37 ng/ml



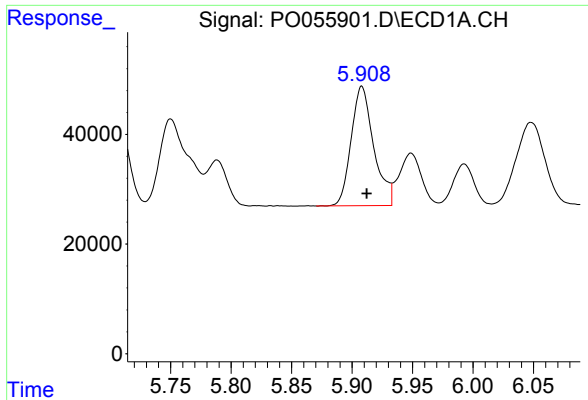
#22 AR-1248-2

R.T.: 5.706 min
 Delta R.T.: -0.004 min
 Response: 251930
 Conc: 188.91 ng/ml



#22 AR-1248-2

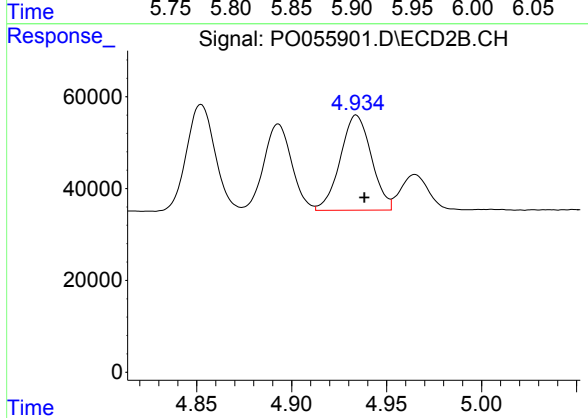
R.T.: 4.893 min
 Delta R.T.: -0.005 min
 Response: 192763
 Conc: 175.44 ng/ml



#23 AR-1248-3

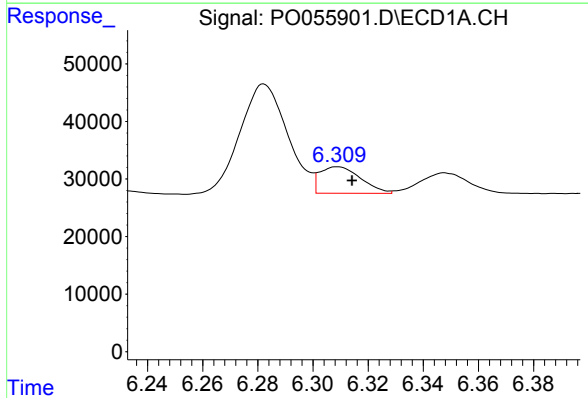
R.T.: 5.908 min
 Delta R.T.: -0.004 min
 Response: 282769
 Conc: 191.48 ng/ml

Instrument :
 ECD_O
 ClientSampleId :
 PB119481BSD



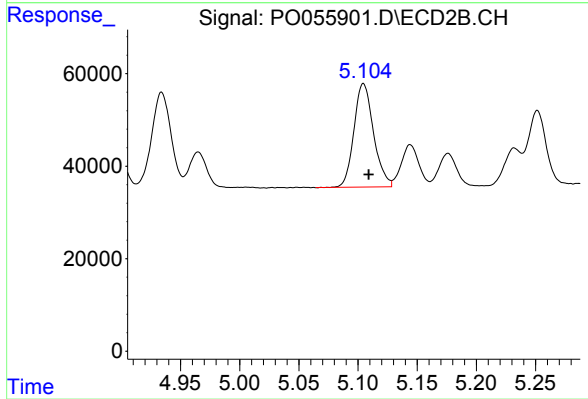
#23 AR-1248-3

R.T.: 4.934 min
 Delta R.T.: -0.004 min
 Response: 236303
 Conc: 208.17 ng/ml



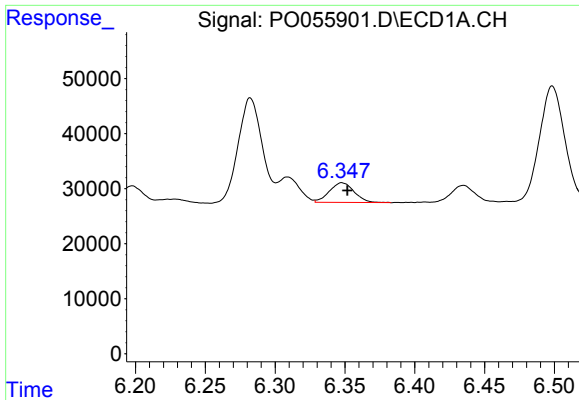
#24 AR-1248-4

R.T.: 6.309 min
 Delta R.T.: -0.005 min
 Response: 47475
 Conc: 27.23 ng/ml



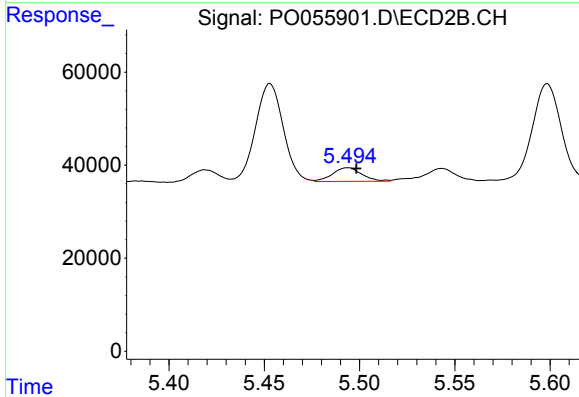
#24 AR-1248-4

R.T.: 5.105 min
 Delta R.T.: -0.004 min
 Response: 257672
 Conc: 183.50 ng/ml

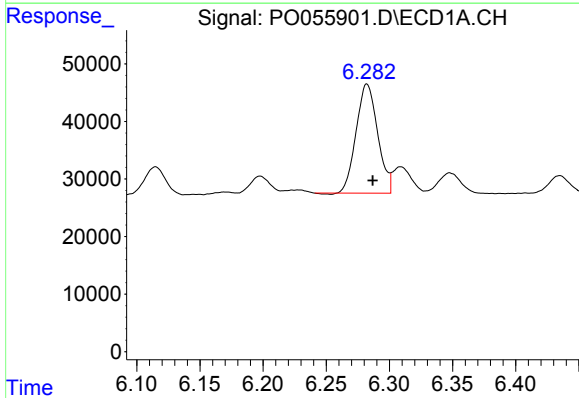


#25 AR-1248-5
 R.T.: 6.348 min
 Delta R.T.: -0.004 min
 Response: 44115
 Conc: 26.41 ng/ml

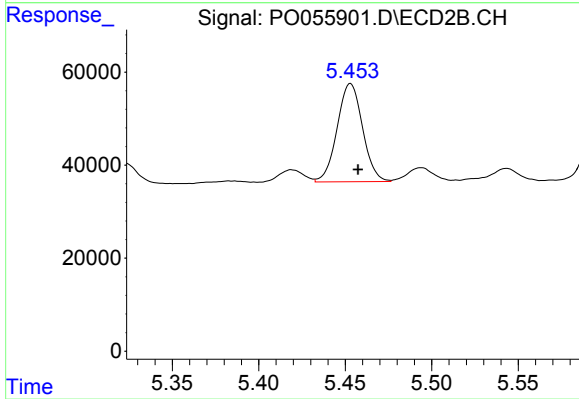
Instrument :
 ECD_O
 ClientSampleId :
 PB119481BSD



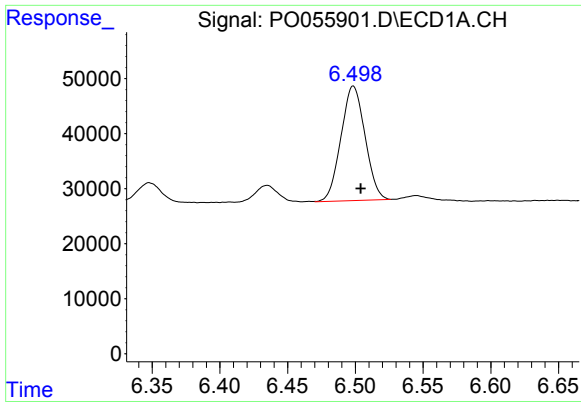
#25 AR-1248-5
 R.T.: 5.494 min
 Delta R.T.: -0.005 min
 Response: 31416
 Conc: 20.98 ng/ml



#26 AR-1254-1
 R.T.: 6.282 min
 Delta R.T.: -0.005 min
 Response: 224733
 Conc: 107.02 ng/ml



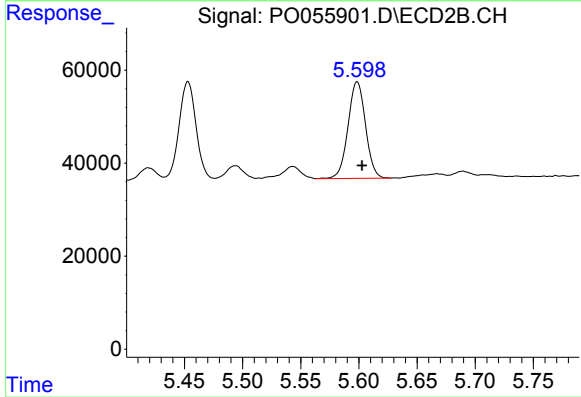
#26 AR-1254-1
 R.T.: 5.453 min
 Delta R.T.: -0.004 min
 Response: 215003
 Conc: 80.34 ng/ml



#27 AR-1254-2

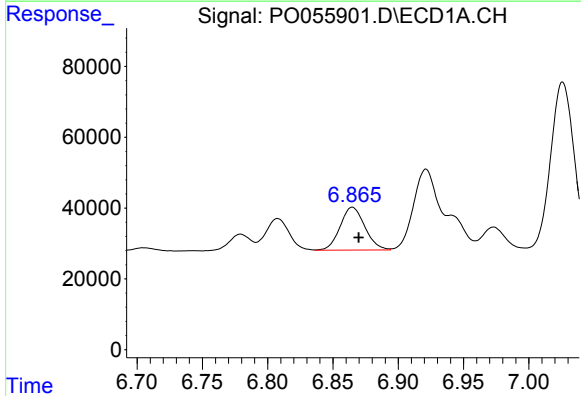
R.T.: 6.499 min
 Delta R.T.: -0.005 min
 Response: 257157
 Conc: 77.48 ng/ml

Instrument :
 ECD_O
 ClientSampleId :
 PB119481BSD



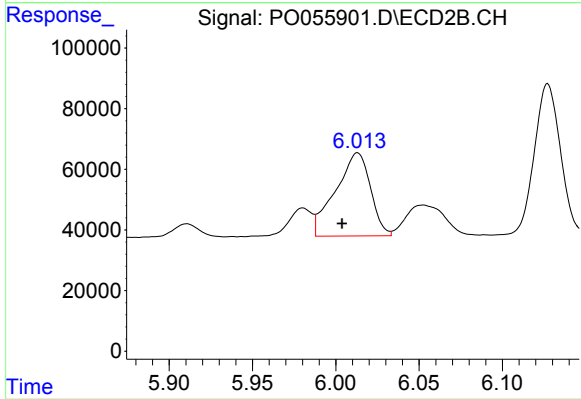
#27 AR-1254-2

R.T.: 5.599 min
 Delta R.T.: -0.004 min
 Response: 217357
 Conc: 88.98 ng/ml



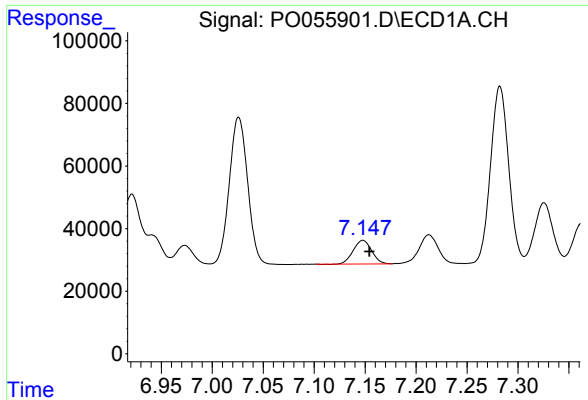
#28 AR-1254-3

R.T.: 6.865 min
 Delta R.T.: -0.005 min
 Response: 159379
 Conc: 43.84 ng/ml



#28 AR-1254-3

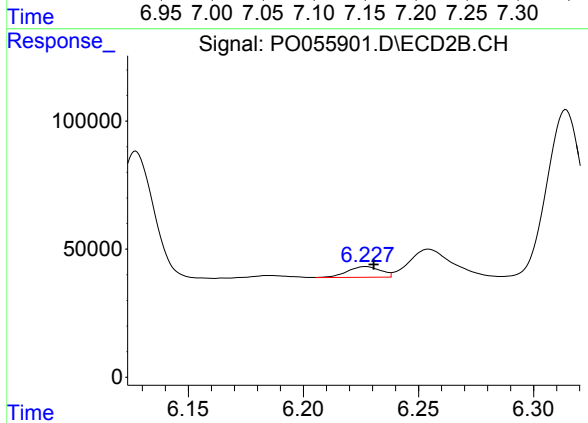
R.T.: 6.013 min
 Delta R.T.: 0.009 min
 Response: 401266
 Conc: 101.14 ng/ml



#29 AR-1254-4

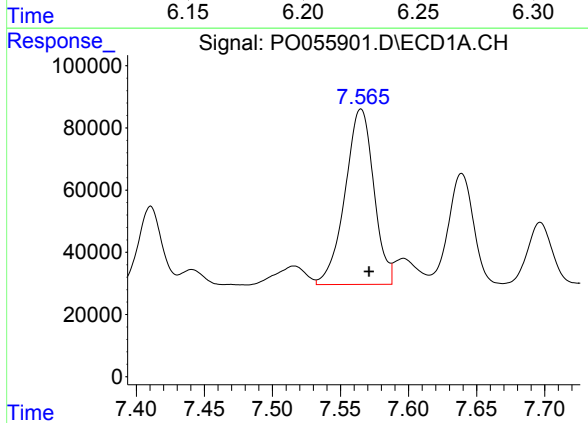
R.T.: 7.148 min
 Delta R.T.: -0.006 min
 Response: 95850
 Conc: 35.23 ng/ml

Instrument :
 ECD_O
 ClientSampleId :
 PB119481BSD



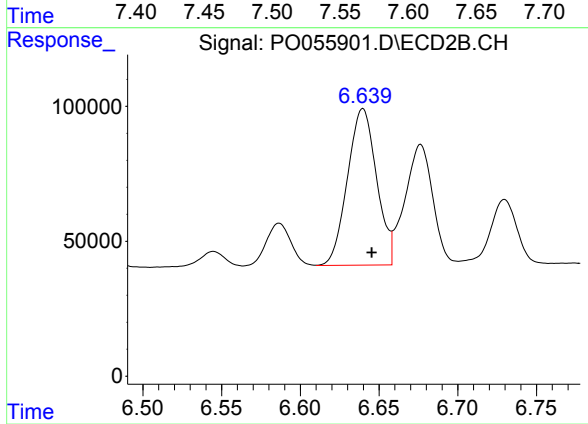
#29 AR-1254-4

R.T.: 6.227 min
 Delta R.T.: -0.004 min
 Response: 42886
 Conc: 16.00 ng/ml



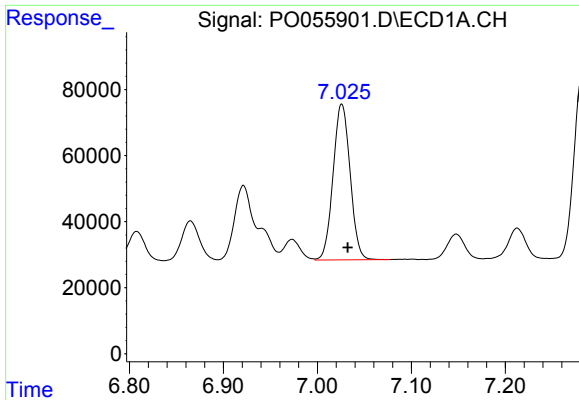
#30 AR-1254-5

R.T.: 7.565 min
 Delta R.T.: -0.006 min
 Response: 829277
 Conc: 289.34 ng/ml



#30 AR-1254-5

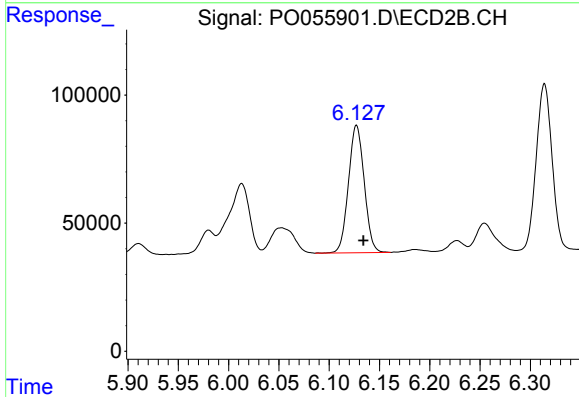
R.T.: 6.640 min
 Delta R.T.: -0.006 min
 Response: 746661
 Conc: 206.33 ng/ml



#31 AR-1260-1

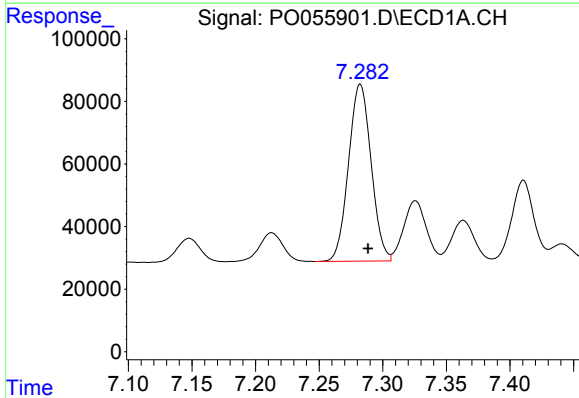
R.T.: 7.026 min
 Delta R.T.: -0.006 min
 Response: 594511
 Conc: 275.30 ng/ml

Instrument :
 ECD_O
 ClientSampleId :
 PB119481BSD



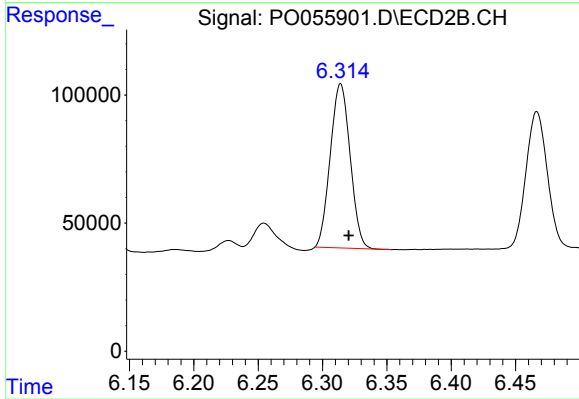
#31 AR-1260-1

R.T.: 6.127 min
 Delta R.T.: -0.007 min
 Response: 541305
 Conc: 245.69 ng/ml



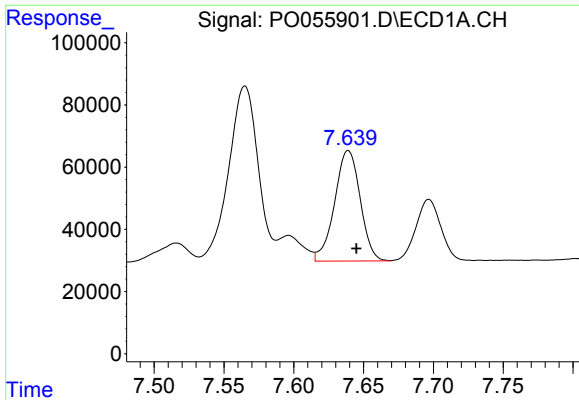
#32 AR-1260-2

R.T.: 7.282 min
 Delta R.T.: -0.006 min
 Response: 699529
 Conc: 267.11 ng/ml



#32 AR-1260-2

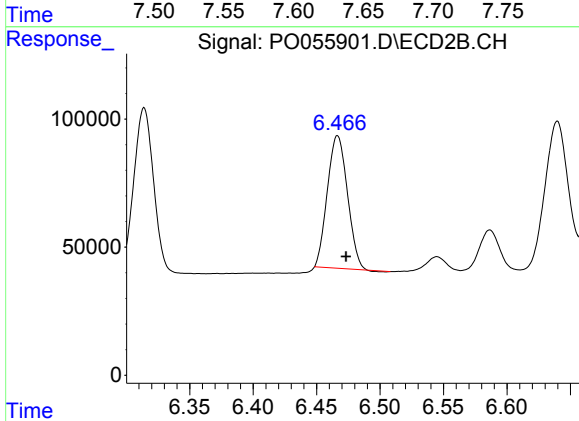
R.T.: 6.314 min
 Delta R.T.: -0.006 min
 Response: 687276
 Conc: 225.07 ng/ml



#33 AR-1260-3

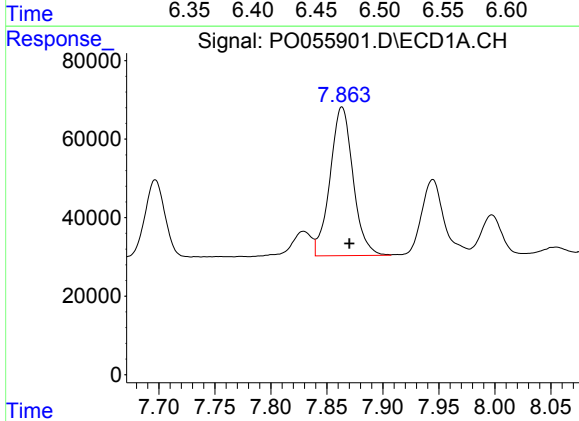
R.T.: 7.639 min
 Delta R.T.: -0.006 min
 Response: 453921
 Conc: 226.96 ng/ml

Instrument :
 ECD_O
 ClientSampleId :
 PB119481BSD



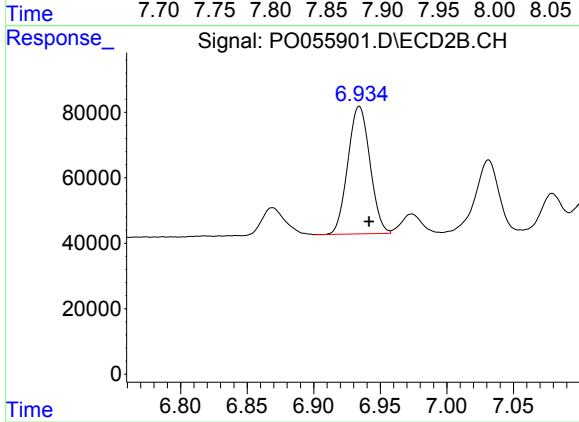
#33 AR-1260-3

R.T.: 6.467 min
 Delta R.T.: -0.007 min
 Response: 569063
 Conc: 228.35 ng/ml



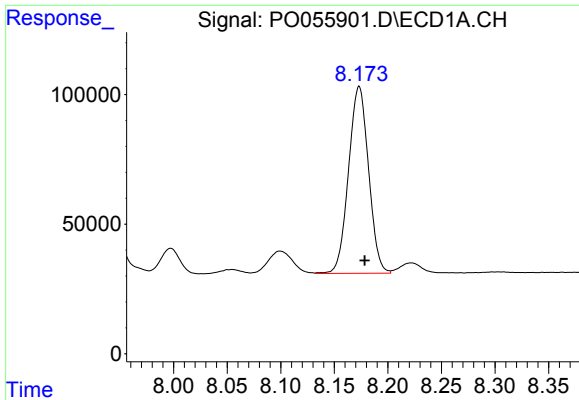
#34 AR-1260-4

R.T.: 7.863 min
 Delta R.T.: -0.007 min
 Response: 541941
 Conc: 234.34 ng/ml



#34 AR-1260-4

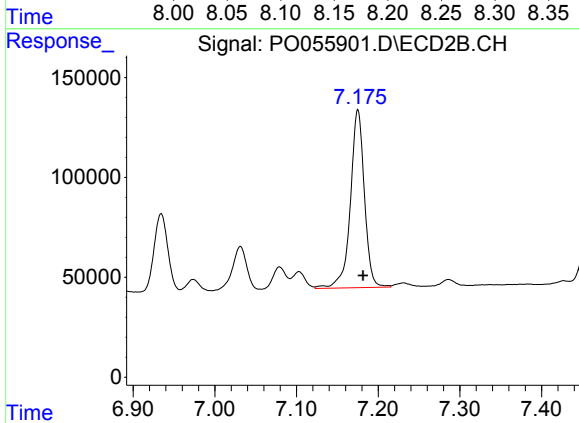
R.T.: 6.934 min
 Delta R.T.: -0.007 min
 Response: 450857
 Conc: 218.49 ng/ml



#35 AR-1260-5

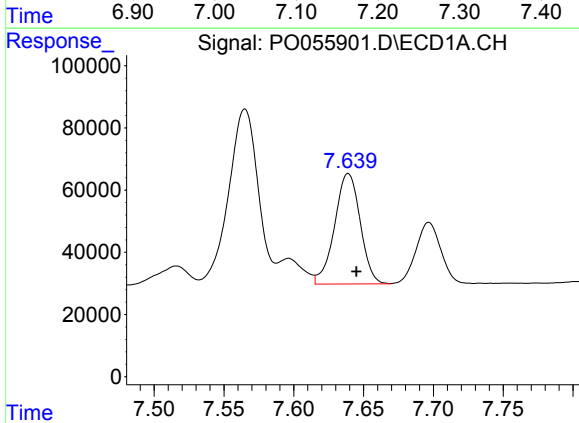
R.T.: 8.173 min
 Delta R.T.: -0.005 min
 Response: 938327
 Conc: 221.18 ng/ml

Instrument :
 ECD_O
 ClientSampleId :
 PB119481BSD



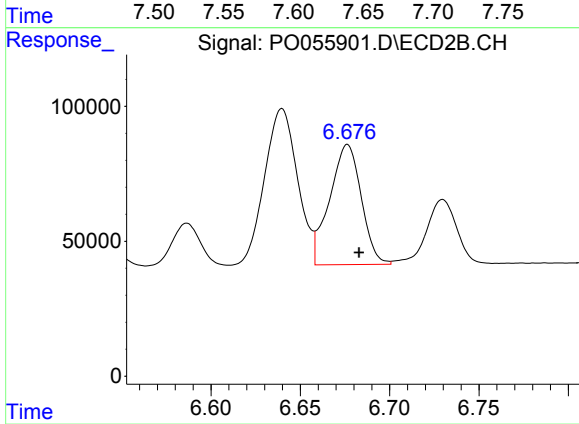
#35 AR-1260-5

R.T.: 7.175 min
 Delta R.T.: -0.006 min
 Response: 1062730
 Conc: 211.60 ng/ml



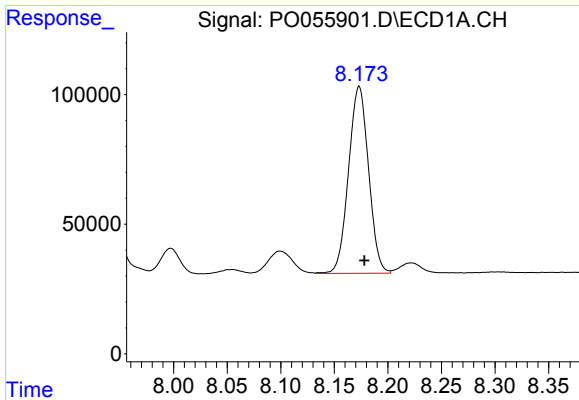
#36 AR-1262-1

R.T.: 7.639 min
 Delta R.T.: -0.006 min
 Response: 453921
 Conc: 141.59 ng/ml



#36 AR-1262-1

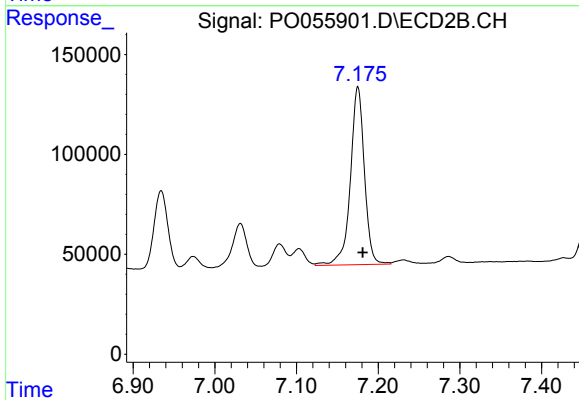
R.T.: 6.676 min
 Delta R.T.: -0.006 min
 Response: 548385
 Conc: 133.73 ng/ml



#37 AR-1262-2

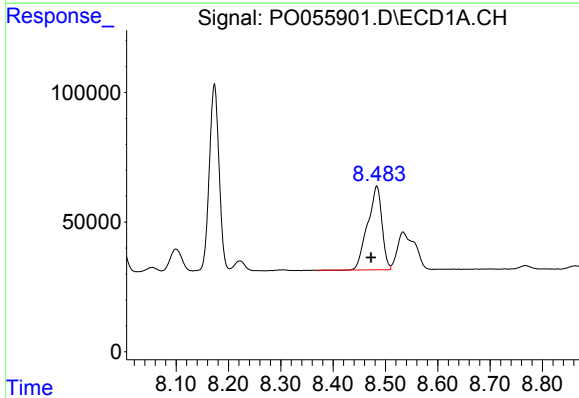
R.T.: 8.173 min
 Delta R.T.: -0.005 min
 Response: 938327
 Conc: 174.78 ng/ml

Instrument :
 ECD_O
 ClientSampleId :
 PB119481BSD



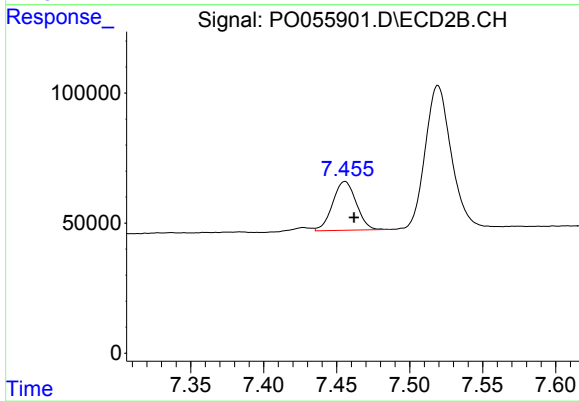
#37 AR-1262-2

R.T.: 7.175 min
 Delta R.T.: -0.006 min
 Response: 1062730
 Conc: 169.96 ng/ml



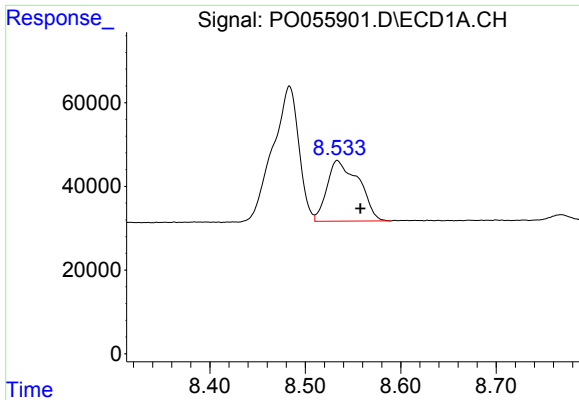
#38 AR-1262-3

R.T.: 8.483 min
 Delta R.T.: 0.011 min
 Response: 613975
 Conc: 169.19 ng/ml



#38 AR-1262-3

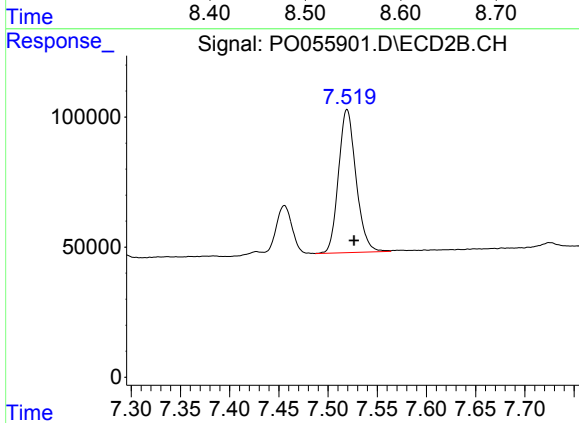
R.T.: 7.456 min
 Delta R.T.: -0.006 min
 Response: 211220
 Conc: 85.76 ng/ml



#39 AR-1262-4

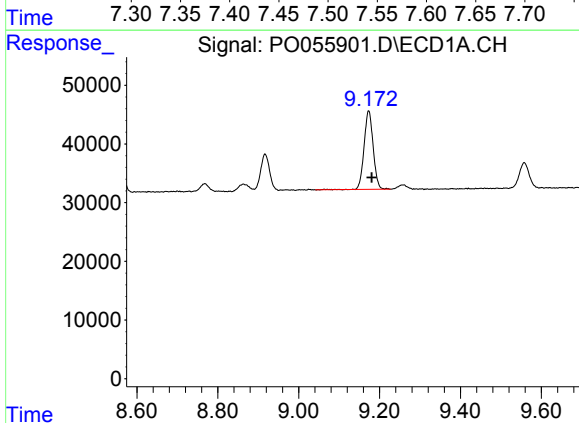
R.T.: 8.534 min
Delta R.T.: -0.024 min
Response: 336138
Conc: 123.80 ng/ml

Instrument :
ECD_O
ClientSampleId :
PB119481BSD



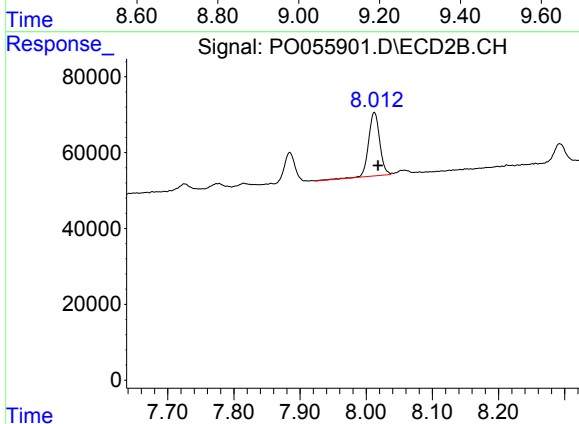
#39 AR-1262-4

R.T.: 7.519 min
Delta R.T.: -0.007 min
Response: 682601
Conc: 166.69 ng/ml



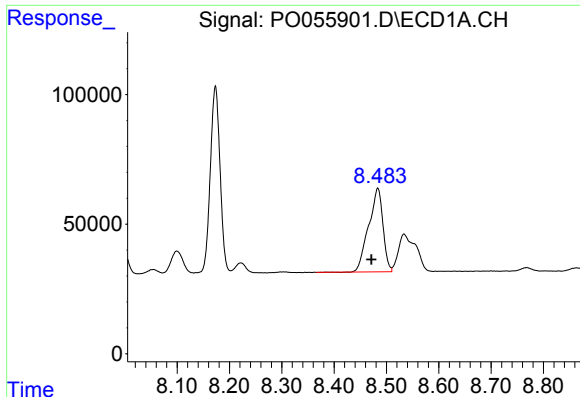
#40 AR-1262-5

R.T.: 9.173 min
Delta R.T.: -0.007 min
Response: 208954
Conc: 115.67 ng/ml



#40 AR-1262-5

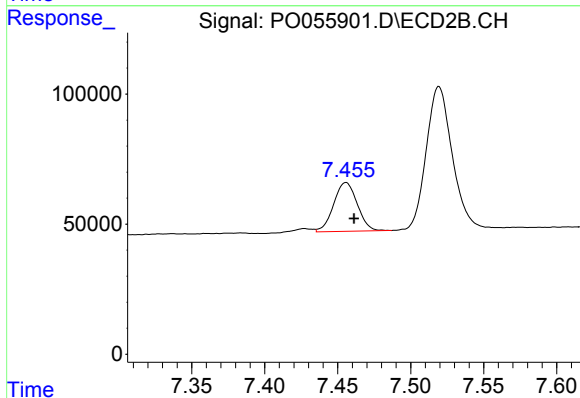
R.T.: 8.012 min
Delta R.T.: -0.006 min
Response: 196858
Conc: 115.52 ng/ml



#41 AR-1268-1

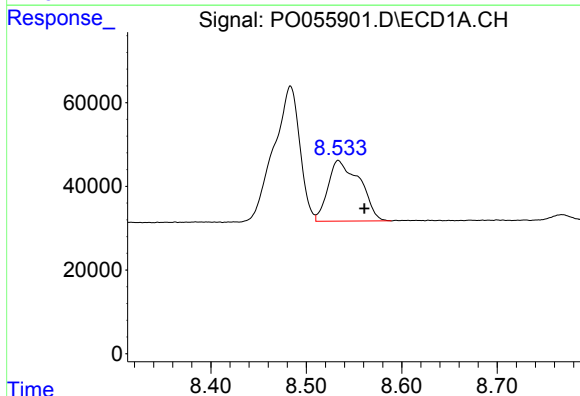
R.T.: 8.483 min
 Delta R.T.: 0.012 min
 Response: 613975
 Conc: 101.67 ng/ml

Instrument :
 ECD_O
 ClientSampleId :
 PB119481BSD



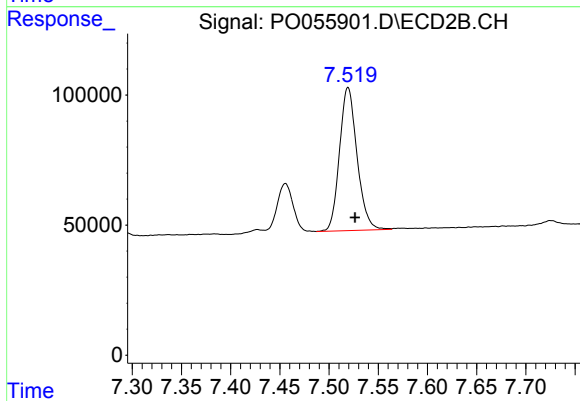
#41 AR-1268-1

R.T.: 7.456 min
 Delta R.T.: -0.006 min
 Response: 211220
 Conc: 30.48 ng/ml



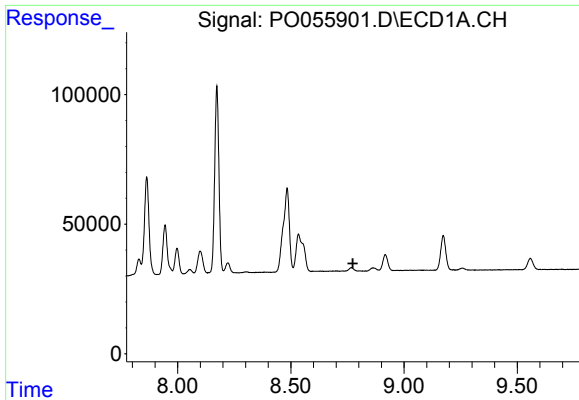
#42 AR-1268-2

R.T.: 8.534 min
 Delta R.T.: -0.027 min
 Response: 336138
 Conc: 61.41 ng/ml



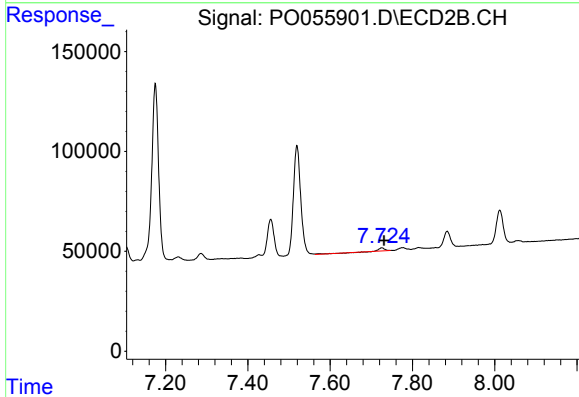
#42 AR-1268-2

R.T.: 7.519 min
 Delta R.T.: -0.007 min
 Response: 682601
 Conc: 119.98 ng/ml

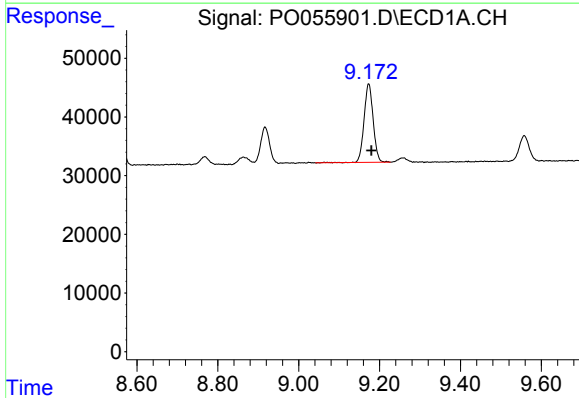


#43 AR-1268-3
 R.T.: 0.000 min
 Exp R.T.: 8.774 min
 Response: 0
 Conc: N.D.

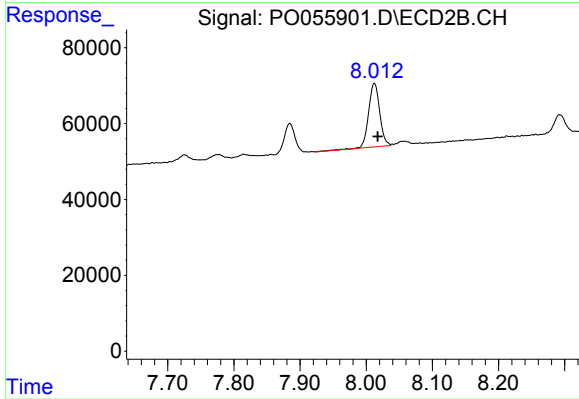
Instrument :
 ECD_O
ClientSampleId :
 PB119481BSD



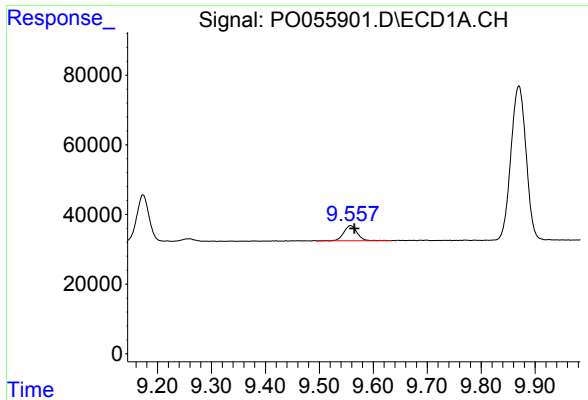
#43 AR-1268-3
 R.T.: 7.725 min
 Delta R.T.: -0.005 min
 Response: 17803
 Conc: 3.77 ng/ml



#44 AR-1268-4
 R.T.: 9.173 min
 Delta R.T.: -0.006 min
 Response: 208954
 Conc: 106.49 ng/ml



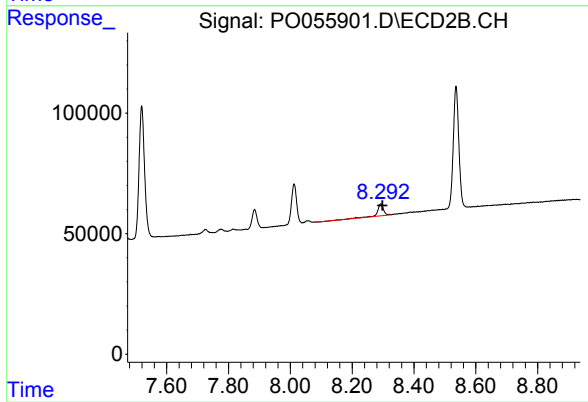
#44 AR-1268-4
 R.T.: 8.012 min
 Delta R.T.: -0.005 min
 Response: 196858
 Conc: 104.06 ng/ml



#45 AR-1268-5

R.T.: 9.558 min
Delta R.T.: -0.007 min
Response: 75532
Conc: 5.60 ng/ml

Instrument :
ECD_O
ClientSampleId :
PB119481BSD



#45 AR-1268-5

R.T.: 8.293 min
Delta R.T.: -0.005 min
Response: 60758
Conc: 4.99 ng/ml