

Data Path : Z:\pestpcbsrv\HPCHEM1\ECD_0\Data\P0050619\
 Data File : P0055908.D
 Signal(s) : Signal #1: ECD1A.CH Signal #2: ECD2B.CH
 Acq On : 07 May 2019 1:04
 Operator : SM/SJ
 Sample : K2672-02MS
 Misc :
 ALS Vial : 7 Sample Multiplier: 1

Instrument :
 ECD_0
 ClientSampled :
 SB-01-COMPMS

Integration File signal 1: autoint1.e
 Integration File signal 2: autoint2.e
 Quant Time: May 07 02:36:47 2019
 Quant Method : Z:\pestpcbsrv\HPCHEM1\ECD_0\methods\P0050319.M
 Quant Title : GC EXTRACTABLES
 QLast Update : Fri May 03 15:20:04 2019
 Response via : Initial Calibration
 Integrator: ChemStation 6890 Scale Mode: Small noise peaks clipped

Volume Inj. : 2 µl
 Signal #1 Phase : ZB-MR1 Signal #2 Phase: ZB-MR2
 Signal #1 Info : 30Mx0.32mmx 0.50µ Signal #2 Info : 30M x 0.32mm x 0.25µm

Compound	RT#1	RT#2	Resp#1	Resp#2	ng/ml	ng/ml
System Monitoring Compounds						
1) SA Tetrachlo...	4.273	3.588	750796	678977	25.089	24.040
2) SA Decachlor...	9.868	8.536	719369	488949	19.226	18.080
Target Compounds						
3) L1 AR-1016-1	5.435	4.659	351632	322717	247.434	240.133
4) L1 AR-1016-2	5.457	4.678	529503	461348	267.578	252.662
5) L1 AR-1016-3	5.518	4.852	326196	343296	254.495	342.567 #
6) L1 AR-1016-4	5.614	4.892	254506	219953	243.493	270.334
7) L1 AR-1016-5	5.909	5.104	348339	321827	309.217	292.342
8) L2 AR-1221-1	4.480	3.798	32626	27495	75.046	74.889
9) L2 AR-1221-2	4.570	3.883	48157	60749	143.606	219.033 #
10) L2 AR-1221-3	4.645	3.958	190701	158845	189.641	178.779
11) L3 AR-1232-1	4.645	3.958	190701	158845	222.028	214.633
12) L3 AR-1232-2	5.168	4.678	245758	461348	506.596	526.383
13) L3 AR-1232-3	5.457	4.852	529503	343296	547.298	715.693 #
14) L3 AR-1232-4	5.614	4.933	254506	252293	500.464	593.960
15) L3 AR-1232-5	5.704	5.104	557657	321827	1284.410	664.101 #
16) L4 AR-1242-1	5.435	4.659	351632	322717	290.415	287.981
17) L4 AR-1242-2	5.457	4.678	529503	461348	313.613	303.229
18) L4 AR-1242-3	5.518	4.852	326196	343296	297.749	396.409 #
19) L4 AR-1242-4	5.614	4.933	254506	252293	282.841	301.172
20) L4 AR-1242-5	6.389	5.462	256316	1389398	234.299	1157.451 #
21) L5 AR-1248-1	5.435	4.659	351632	322717	388.493	384.862
22) L5 AR-1248-2	5.704	4.892	557657	219953	418.154	200.182 #
23) L5 AR-1248-3	5.909	4.933	348339	252293	235.885	222.255
24) L5 AR-1248-4	6.313	5.104	820564	321827	470.578	229.193 #
25) L5 AR-1248-5	6.389	5.528	256316	266922	153.452	178.219
26) L6 AR-1254-1	6.293	5.462	1345313	1389398	640.676	519.145
27) L6 AR-1254-2	6.505	5.598	1272063	343359	383.287	140.566 #
28) L6 AR-1254-3	6.872	6.015	1004624	861233	276.336	217.066
29) L6 AR-1254-4	7.148	6.226	243387	127404	89.458	47.518 #
30) L6 AR-1254-5	7.565	6.639	948606	781125	330.972	215.859 #
31) L7 AR-1260-1	7.026	6.127	651233	609679	301.567	276.726
32) L7 AR-1260-2	7.279	6.313	2408003	606878	919.476	198.744 #
33) L7 AR-1260-3	7.639	6.465	421874	494252	210.938	198.333
34) L7 AR-1260-4	7.862	6.934	558586	342901	241.540	166.177 #
35) L7 AR-1260-5	8.172	7.175	851977	837502	200.828	166.758
36) L8 AR-1262-1	7.639	6.675	421874	462323	131.595	112.740
37) L8 AR-1262-2	8.172	7.175	851977	837502	158.693	133.940
38) L8 AR-1262-3	8.483	7.455	550485	163358	151.696	66.326 #
39) L8 AR-1262-4	8.552	7.519	124583	597844	45.885	145.995 #
40) L8 AR-1262-5	9.173	8.011	193685	160061	107.215	93.925
41) L9 AR-1268-1	8.483	7.455	550485	163358	91.157	23.577 #

Data Path : Z:\pestpcbsrv\HPCHEM1\ECD_0\Data\P0050619\
 Data File : P0055908.D
 Signal(s) : Signal #1: ECD1A.CH Signal #2: ECD2B.CH
 Acq On : 07 May 2019 1:04
 Operator : SM/SJ
 Sample : K2672-02MS
 Misc :
 ALS Vial : 7 Sample Multiplier: 1

Instrument :
 ECD_0
 ClientSampleId :
 SB-01-COMPMS

Integration File signal 1: autoint1.e
 Integration File signal 2: autoint2.e
 Quant Time: May 07 02:36:47 2019
 Quant Method : Z:\pestpcbsrv\HPCHEM1\ECD_0\methods\P0050319.M
 Quant Title : GC EXTRACTABLES
 QLast Update : Fri May 03 15:20:04 2019
 Response via : Initial Calibration
 Integrator: ChemStation 6890 Scale Mode: Small noise peaks clipped

Volume Inj. : 2 µl
 Signal #1 Phase : ZB-MR1 Signal #2 Phase: ZB-MR2
 Signal #1 Info : 30Mx0.32mmx 0.50µ Signal #2 Info : 30M x 0.32mm x 0.25µm

	Compound	RT#1	RT#2	Resp#1	Resp#2	ng/ml	ng/ml
42)	L9 AR-1268-2	8.552	7.519	124583	597844	22.760	105.085 #
43)	L9 AR-1268-3	0.000	7.724	0	21658	N.D.	4.586 #
44)	L9 AR-1268-4	9.173	8.011	193685	160061	98.708	84.612
45)	L9 AR-1268-5	9.557	8.290	109528	139412	8.118	11.448 #

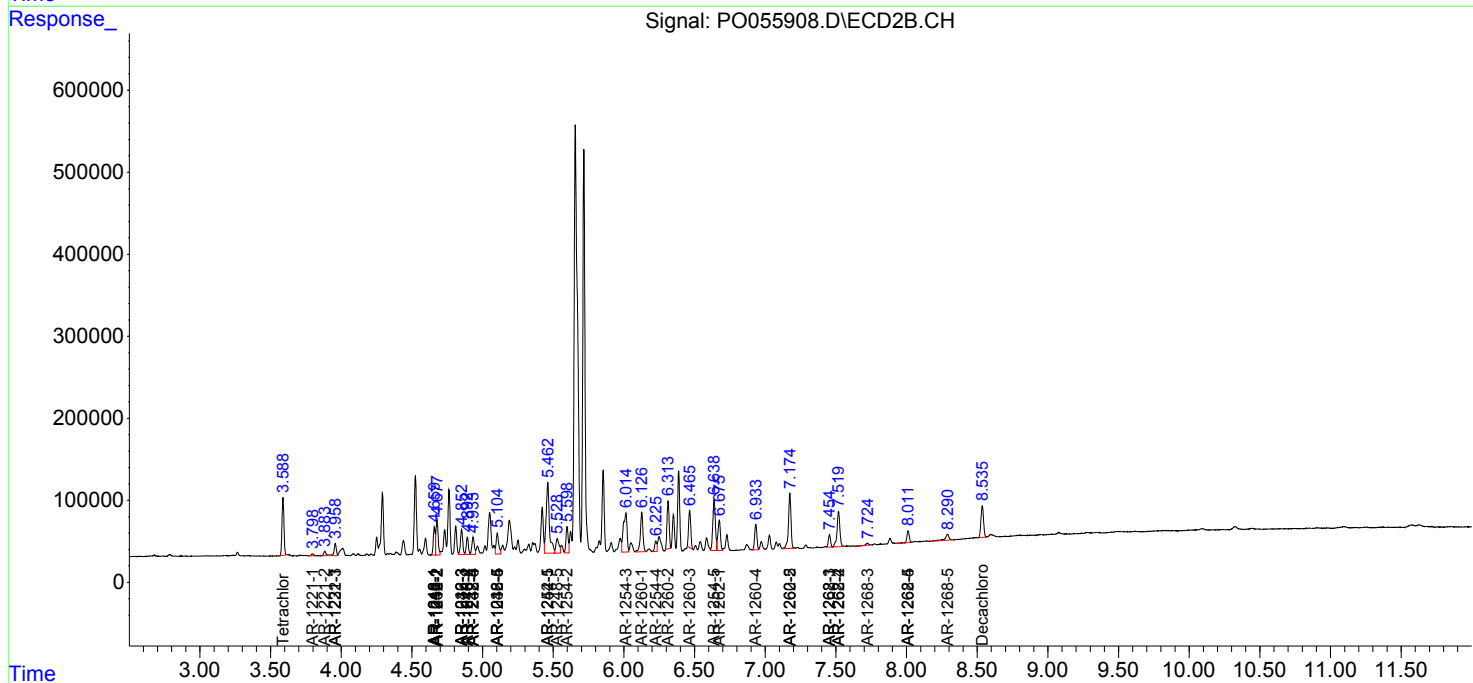
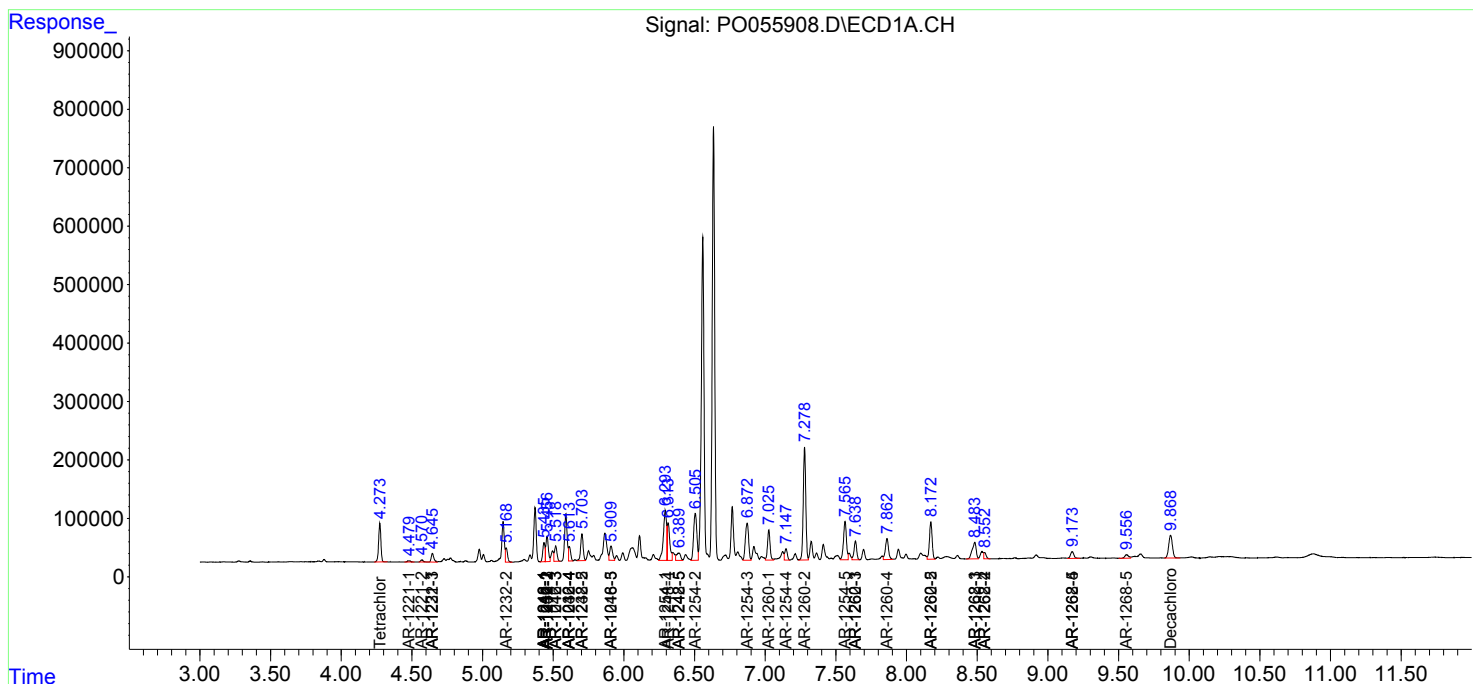
(f)=RT Delta > 1/2 Window (#)=Amounts differ by > 25% (m)=manual int.

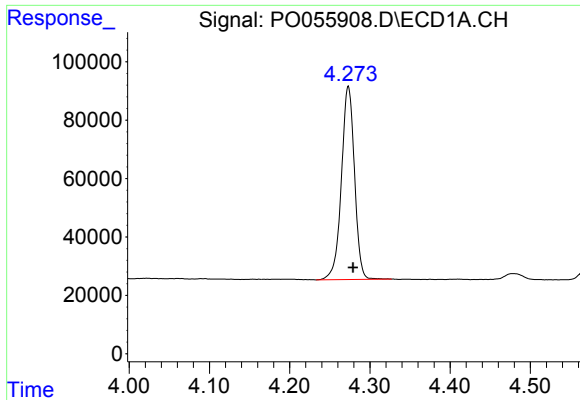
Data Path : Z:\pestpcbsrv\HPCHEM1\ECD_0\Data\P0050619\
 Data File : P0055908.D
 Signal(s) : Signal #1: ECD1A.CH Signal #2: ECD2B.CH
 Acq On : 07 May 2019 1:04
 Operator : SM/SJ
 Sample : K2672-02MS
 Misc :
 ALS Vial : 7 Sample Multiplier: 1

Instrument :
 ECD_0
 Client Sampled :
 SB-01-COMPMS

Integration File signal 1: autoint1.e
 Integration File signal 2: autoint2.e
 Quant Time: May 07 02:36:47 2019
 Quant Method : Z:\pestpcbsrv\HPCHEM1\ECD_0\methods\P0050319.M
 Quant Title : GC EXTRACTABLES
 QLast Update : Fri May 03 15:20:04 2019
 Response via : Initial Calibration
 Integrator: ChemStation 6890 Scale Mode: Small noise peaks clipped

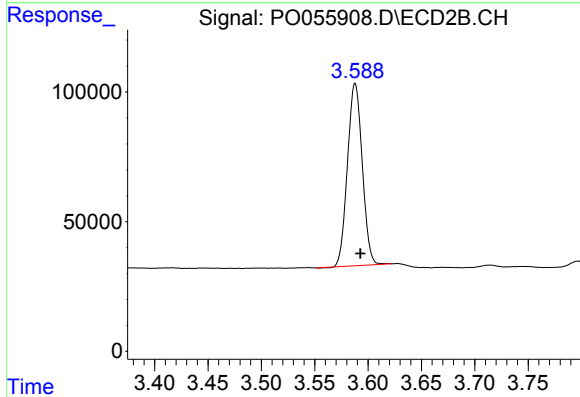
Volume Inj. : 2 µl
 Signal #1 Phase : ZB-MR1 Signal #2 Phase: ZB-MR2
 Signal #1 Info : 30Mx0.32mmx 0.50µ Signal #2 Info : 30M x 0.32mm x 0.25µm



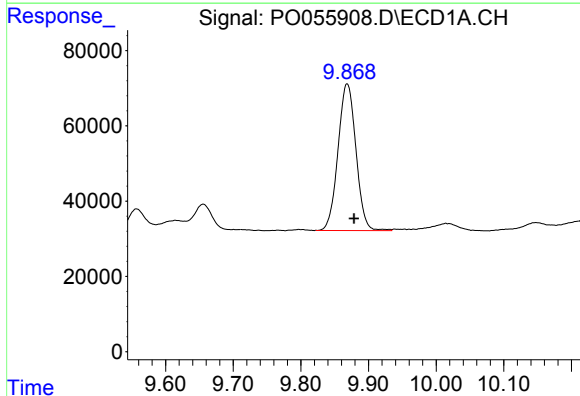


#1 Tetrachloro-m-xylene
R.T.: 4.273 min
Delta R.T.: -0.006 min
Response: 750796
Conc: 25.09 ng/ml

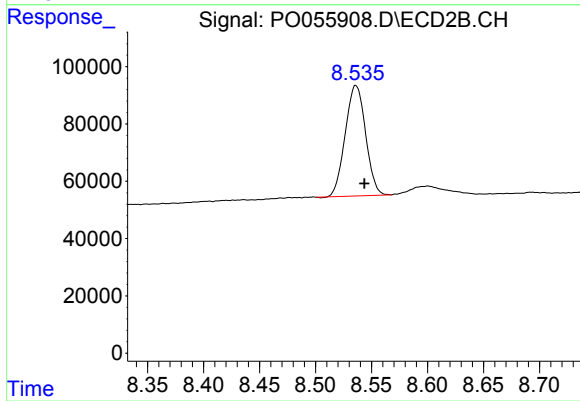
Instrument :
ECD_O
ClientSampleId :
SB-01-COMPMS



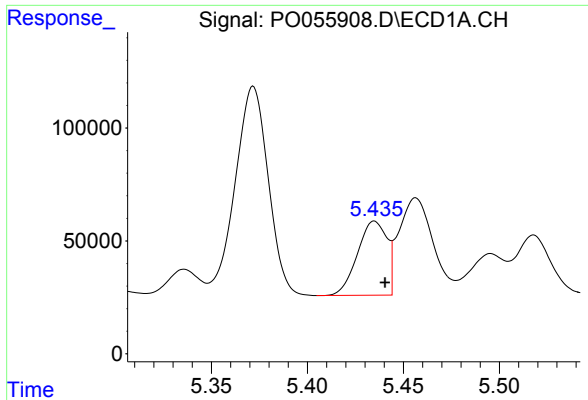
#1 Tetrachloro-m-xylene
R.T.: 3.588 min
Delta R.T.: -0.005 min
Response: 678977
Conc: 24.04 ng/ml



#2 Decachlorobiphenyl
R.T.: 9.868 min
Delta R.T.: -0.011 min
Response: 719369
Conc: 19.23 ng/ml

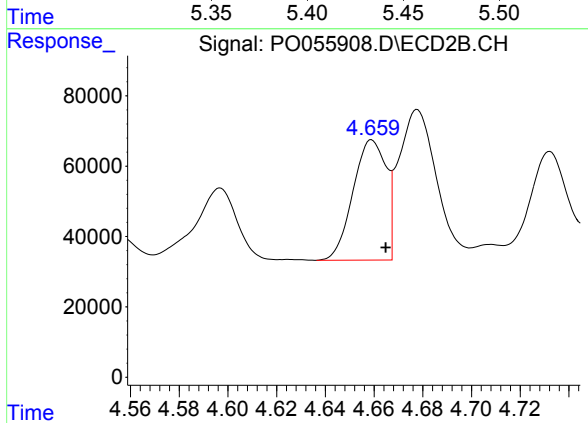


#2 Decachlorobiphenyl
R.T.: 8.536 min
Delta R.T.: -0.008 min
Response: 488949
Conc: 18.08 ng/ml

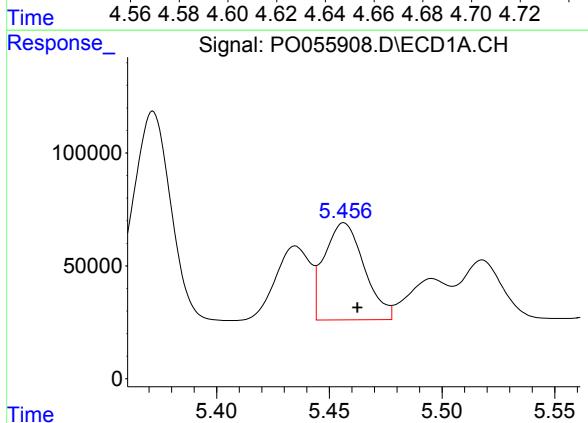


#3 AR-1016-1
 R.T.: 5.435 min
 Delta R.T.: -0.006 min
 Response: 351632
 Conc: 247.43 ng/ml

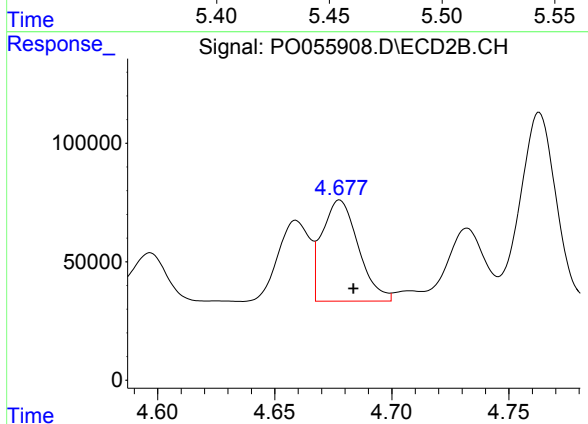
Instrument :
 ECD_O
ClientSampled :
 SB-01-COMPMS



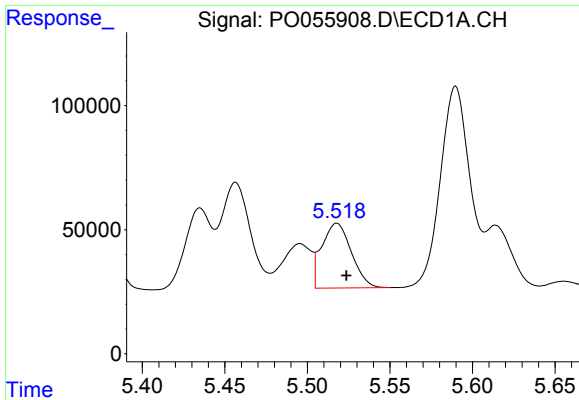
#3 AR-1016-1
 R.T.: 4.659 min
 Delta R.T.: -0.006 min
 Response: 322717
 Conc: 240.13 ng/ml



#4 AR-1016-2
 R.T.: 5.457 min
 Delta R.T.: -0.006 min
 Response: 529503
 Conc: 267.58 ng/ml

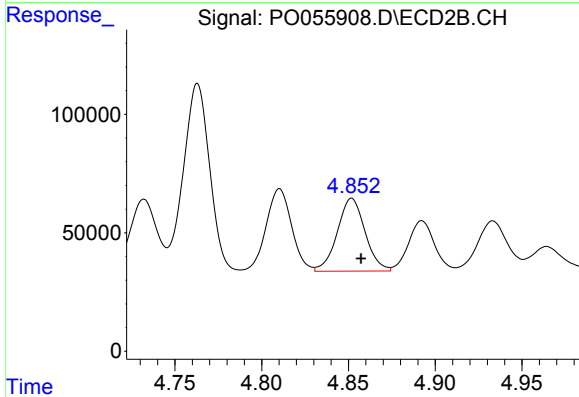


#4 AR-1016-2
 R.T.: 4.678 min
 Delta R.T.: -0.006 min
 Response: 461348
 Conc: 252.66 ng/ml

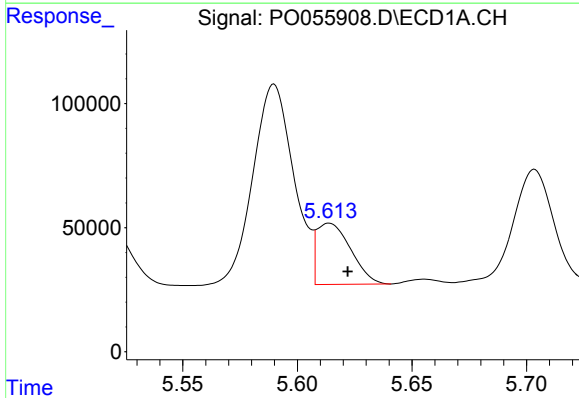


#5 AR-1016-3
 R.T.: 5.518 min
 Delta R.T.: -0.006 min
 Response: 326196
 Conc: 254.49 ng/ml

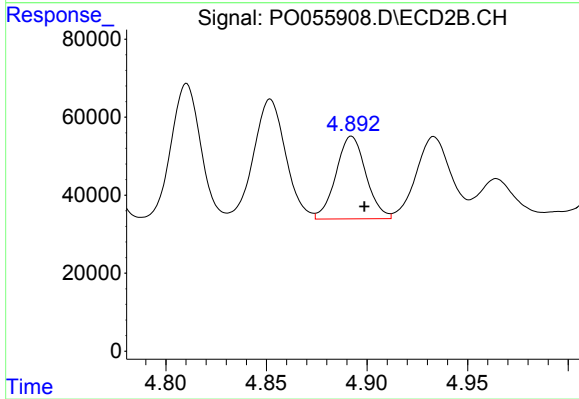
Instrument :
 ECD_O
ClientSampleId :
 SB-01-COMPMS



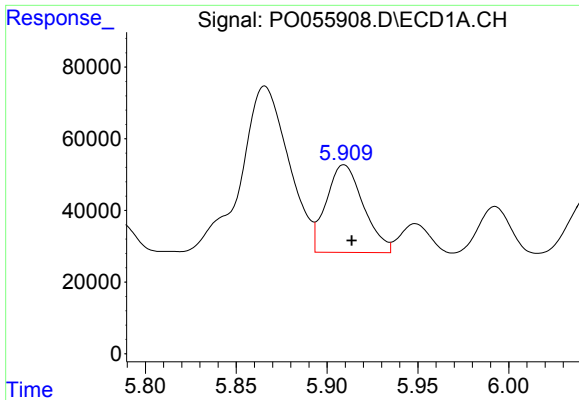
#5 AR-1016-3
 R.T.: 4.852 min
 Delta R.T.: -0.005 min
 Response: 343296
 Conc: 342.57 ng/ml



#6 AR-1016-4
 R.T.: 5.614 min
 Delta R.T.: -0.008 min
 Response: 254506
 Conc: 243.49 ng/ml

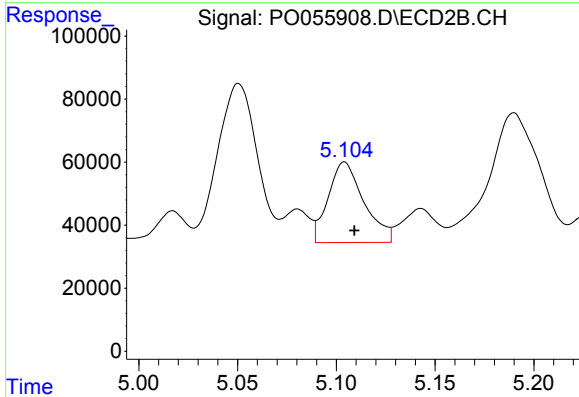


#6 AR-1016-4
 R.T.: 4.892 min
 Delta R.T.: -0.006 min
 Response: 219953
 Conc: 270.33 ng/ml

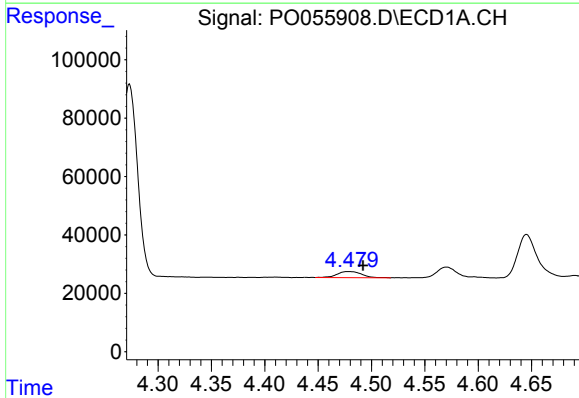


#7 AR-1016-5
 R.T.: 5.909 min
 Delta R.T.: -0.004 min
 Response: 348339
 Conc: 309.22 ng/ml

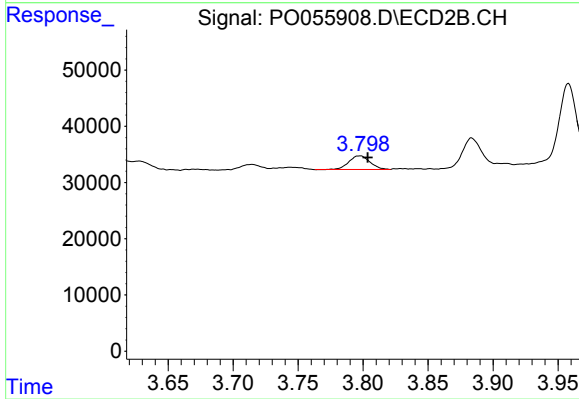
Instrument :
 ECD_O
 ClientSampleId :
 SB-01-COMPMS



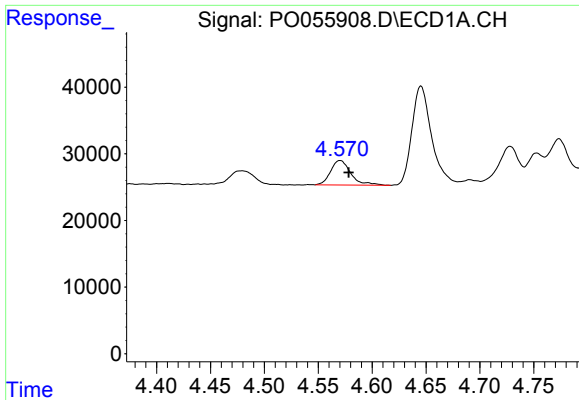
#7 AR-1016-5
 R.T.: 5.104 min
 Delta R.T.: -0.005 min
 Response: 321827
 Conc: 292.34 ng/ml



#8 AR-1221-1
 R.T.: 4.480 min
 Delta R.T.: -0.013 min
 Response: 32626
 Conc: 75.05 ng/ml

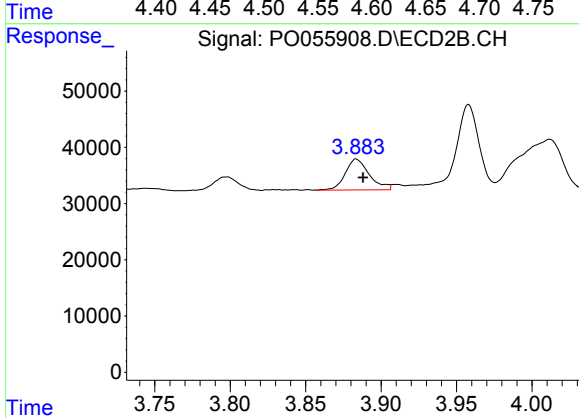


#8 AR-1221-1
 R.T.: 3.798 min
 Delta R.T.: -0.005 min
 Response: 27495
 Conc: 74.89 ng/ml

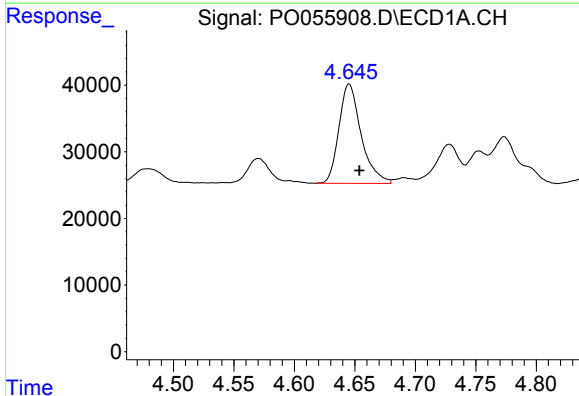


#9 AR-1221-2
 R.T.: 4.570 min
 Delta R.T.: -0.008 min
 Response: 48157
 Conc: 143.61 ng/ml

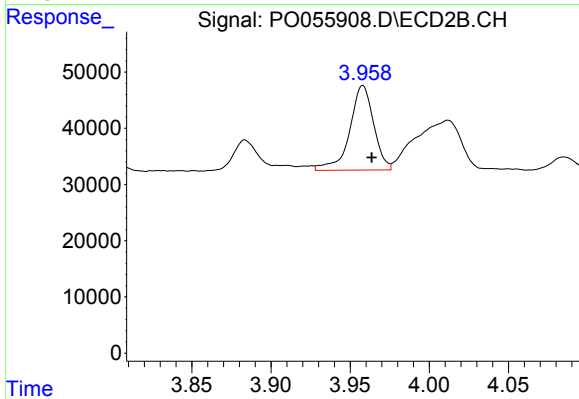
Instrument :
 ECD_O
 ClientSampleId :
 SB-01-COMPMS



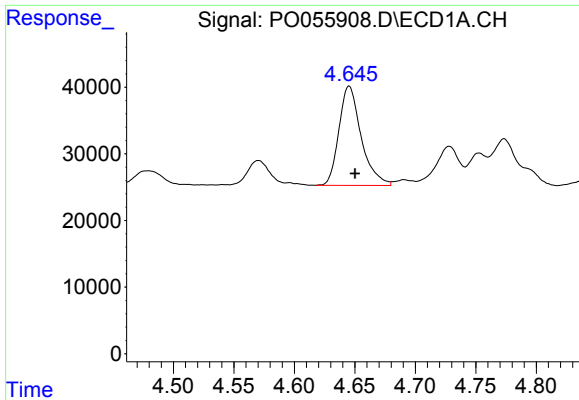
#9 AR-1221-2
 R.T.: 3.883 min
 Delta R.T.: -0.005 min
 Response: 60749
 Conc: 219.03 ng/ml



#10 AR-1221-3
 R.T.: 4.645 min
 Delta R.T.: -0.008 min
 Response: 190701
 Conc: 189.64 ng/ml



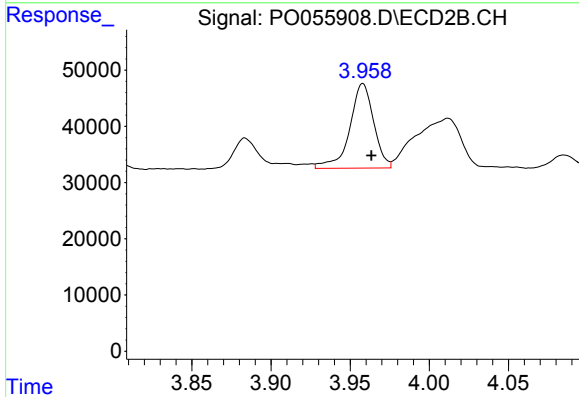
#10 AR-1221-3
 R.T.: 3.958 min
 Delta R.T.: -0.006 min
 Response: 158845
 Conc: 178.78 ng/ml



#11 AR-1232-1

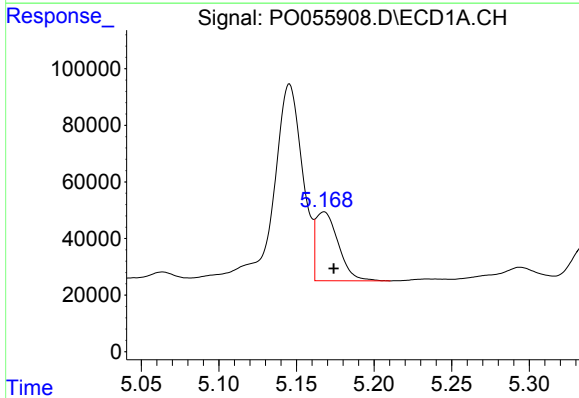
R.T.: 4.645 min
 Delta R.T.: -0.005 min
 Response: 190701
 Conc: 222.03 ng/ml

Instrument :
 ECD_O
 ClientSampleId :
 SB-01-COMPMS



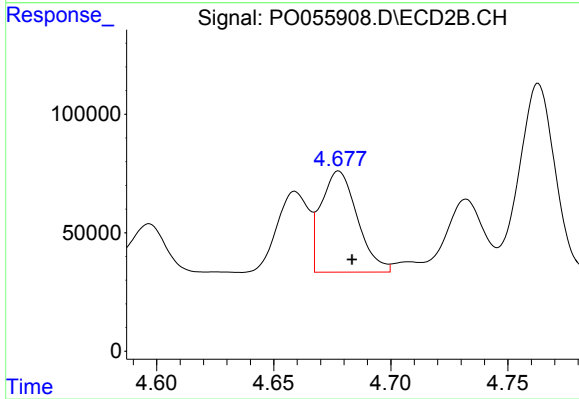
#11 AR-1232-1

R.T.: 3.958 min
 Delta R.T.: -0.005 min
 Response: 158845
 Conc: 214.63 ng/ml



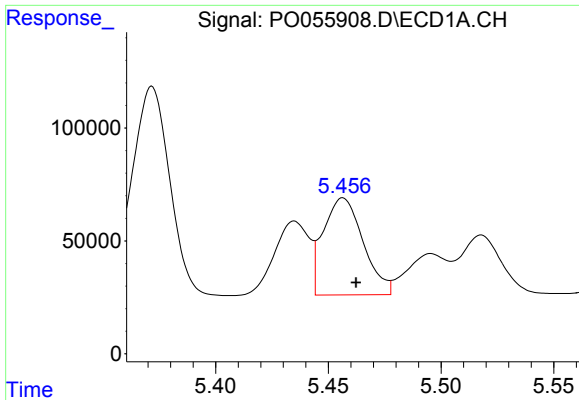
#12 AR-1232-2

R.T.: 5.168 min
 Delta R.T.: -0.006 min
 Response: 245758
 Conc: 506.60 ng/ml



#12 AR-1232-2

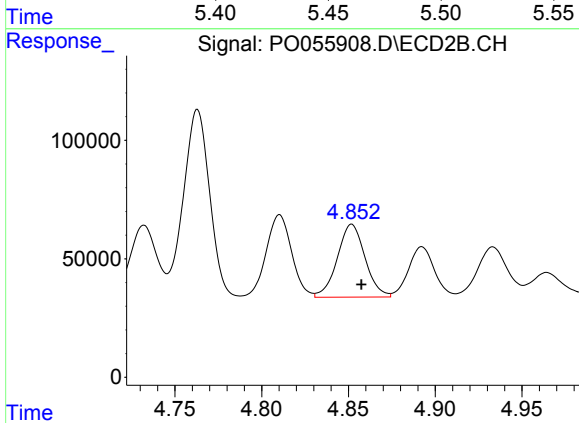
R.T.: 4.678 min
 Delta R.T.: -0.006 min
 Response: 461348
 Conc: 526.38 ng/ml



#13 AR-1232-3

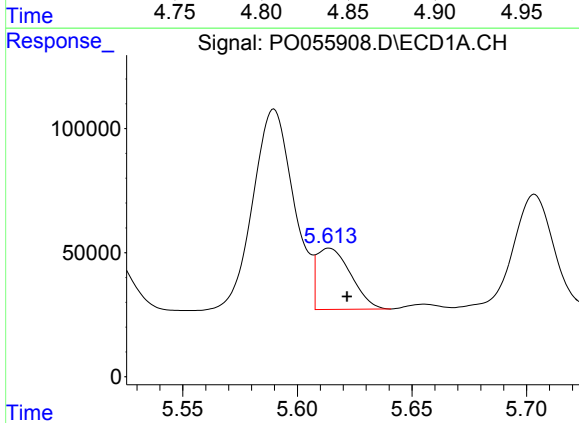
R.T.: 5.457 min
 Delta R.T.: -0.006 min
 Response: 529503
 Conc: 547.30 ng/ml

Instrument :
 ECD_O
 ClientSampleId :
 SB-01-COMPMS



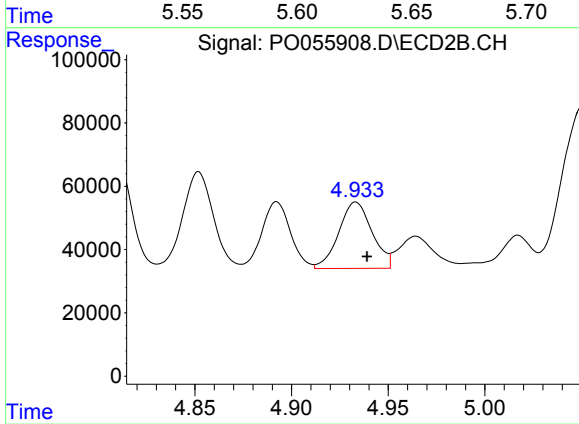
#13 AR-1232-3

R.T.: 4.852 min
 Delta R.T.: -0.005 min
 Response: 343296
 Conc: 715.69 ng/ml



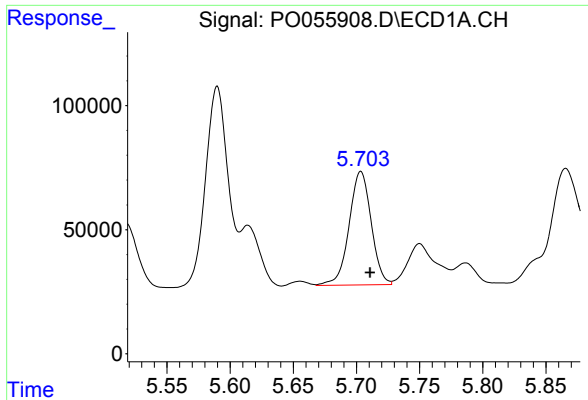
#14 AR-1232-4

R.T.: 5.614 min
 Delta R.T.: -0.008 min
 Response: 254506
 Conc: 500.46 ng/ml



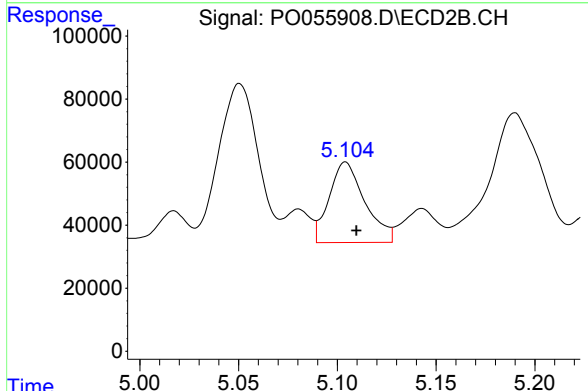
#14 AR-1232-4

R.T.: 4.933 min
 Delta R.T.: -0.006 min
 Response: 252293
 Conc: 593.96 ng/ml

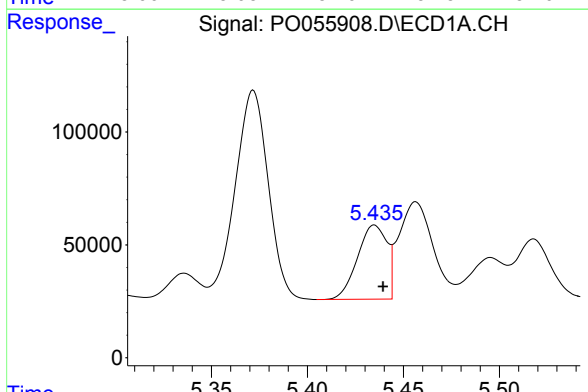


#15 AR-1232-5
 R.T.: 5.704 min
 Delta R.T.: -0.007 min
 Response: 557657
 Conc: 1284.41 ng/ml

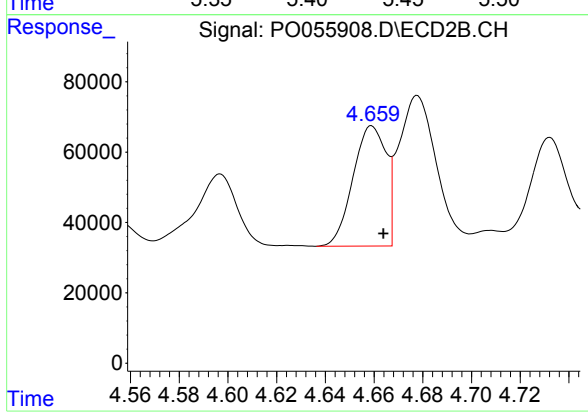
Instrument :
 ECD_O
 ClientSampleId :
 SB-01-COMPMS



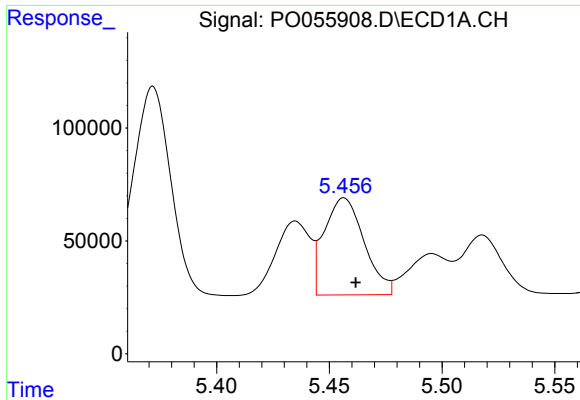
#15 AR-1232-5
 R.T.: 5.104 min
 Delta R.T.: -0.006 min
 Response: 321827
 Conc: 664.10 ng/ml



#16 AR-1242-1
 R.T.: 5.435 min
 Delta R.T.: -0.005 min
 Response: 351632
 Conc: 290.41 ng/ml

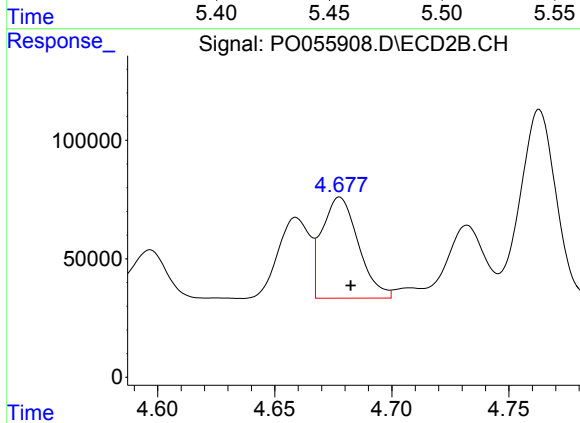


#16 AR-1242-1
 R.T.: 4.659 min
 Delta R.T.: -0.005 min
 Response: 322717
 Conc: 287.98 ng/ml

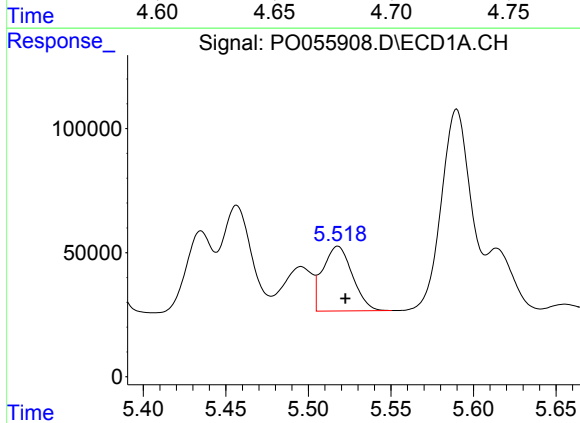


#17 AR-1242-2
 R.T.: 5.457 min
 Delta R.T.: -0.005 min
 Response: 529503
 Conc: 313.61 ng/ml

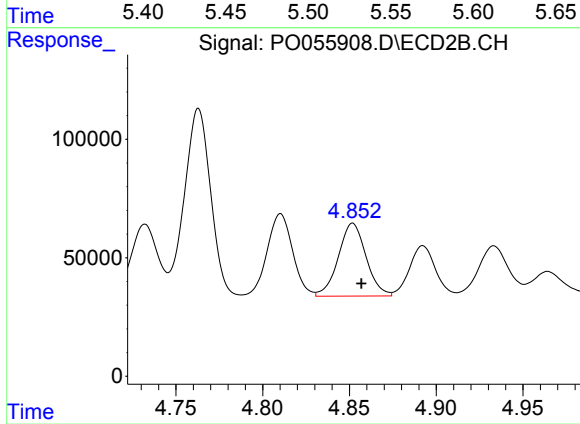
Instrument :
 ECD_O
ClientSampleId :
 SB-01-COMPMS



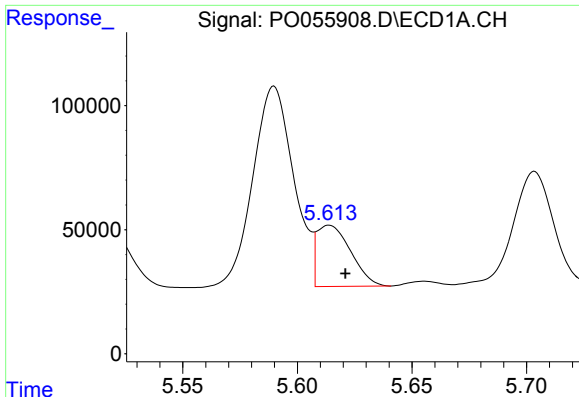
#17 AR-1242-2
 R.T.: 4.678 min
 Delta R.T.: -0.005 min
 Response: 461348
 Conc: 303.23 ng/ml



#18 AR-1242-3
 R.T.: 5.518 min
 Delta R.T.: -0.004 min
 Response: 326196
 Conc: 297.75 ng/ml



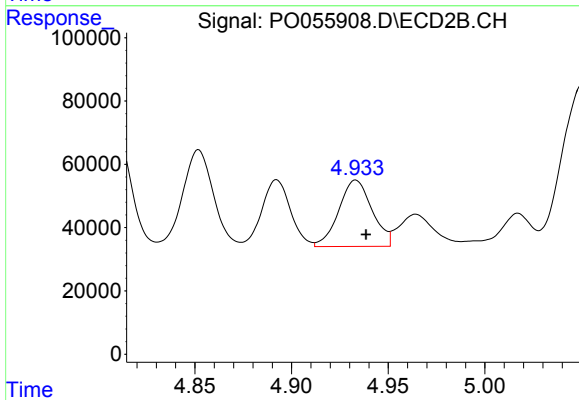
#18 AR-1242-3
 R.T.: 4.852 min
 Delta R.T.: -0.005 min
 Response: 343296
 Conc: 396.41 ng/ml



#19 AR-1242-4

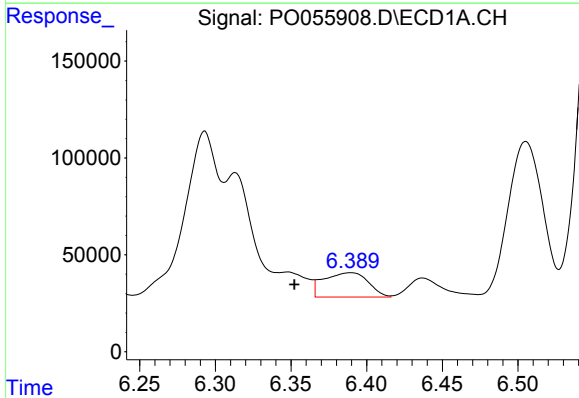
R.T.: 5.614 min
 Delta R.T.: -0.007 min
 Response: 254506
 Conc: 282.84 ng/ml

Instrument :
 ECD_O
 ClientSampleId :
 SB-01-COMPMS



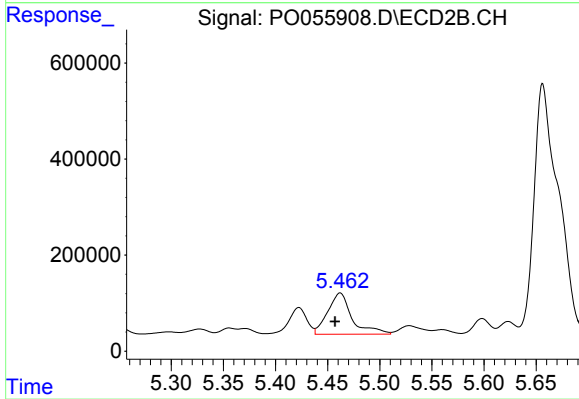
#19 AR-1242-4

R.T.: 4.933 min
 Delta R.T.: -0.005 min
 Response: 252293
 Conc: 301.17 ng/ml



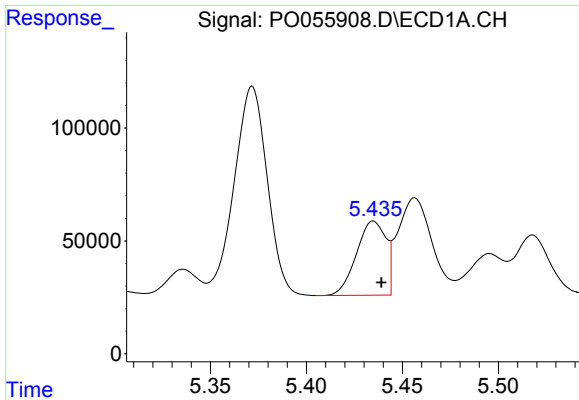
#20 AR-1242-5

R.T.: 6.389 min
 Delta R.T.: 0.037 min
 Response: 256316
 Conc: 234.30 ng/ml



#20 AR-1242-5

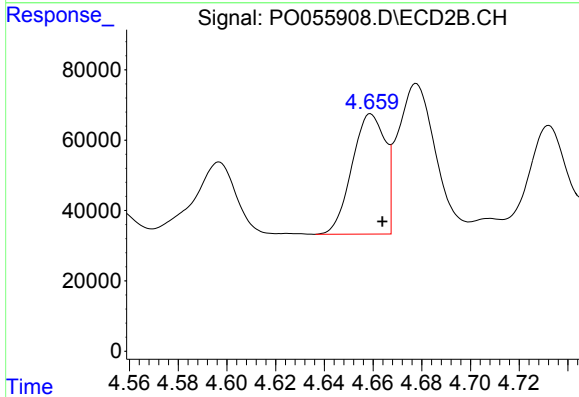
R.T.: 5.462 min
 Delta R.T.: 0.005 min
 Response: 1389398
 Conc: 1157.45 ng/ml



#21 AR-1248-1

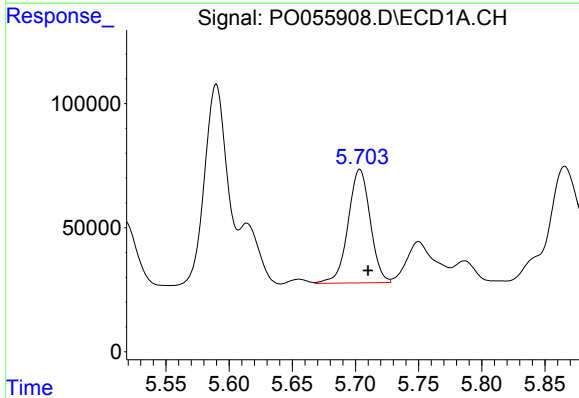
R.T.: 5.435 min
 Delta R.T.: -0.004 min
 Response: 351632
 Conc: 388.49 ng/ml

Instrument :
 ECD_O
 ClientSampleId :
 SB-01-COMPMS



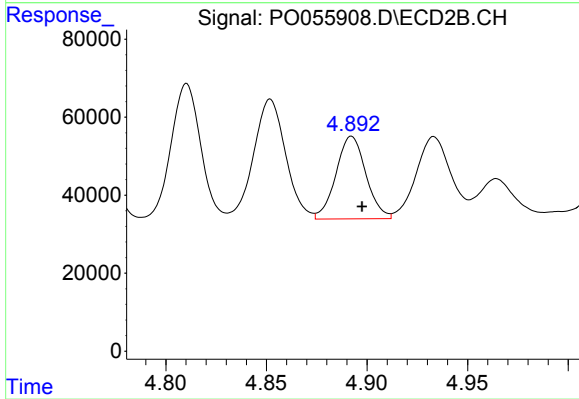
#21 AR-1248-1

R.T.: 4.659 min
 Delta R.T.: -0.005 min
 Response: 322717
 Conc: 384.86 ng/ml



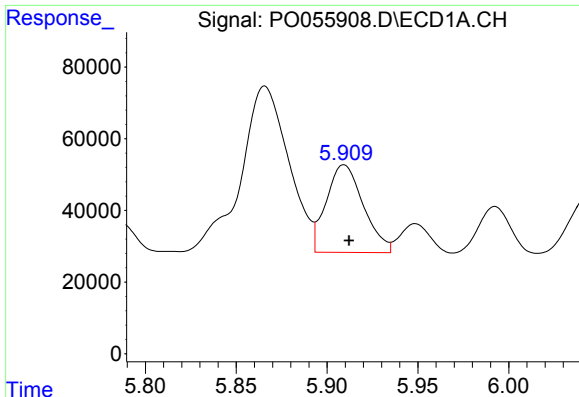
#22 AR-1248-2

R.T.: 5.704 min
 Delta R.T.: -0.007 min
 Response: 557657
 Conc: 418.15 ng/ml



#22 AR-1248-2

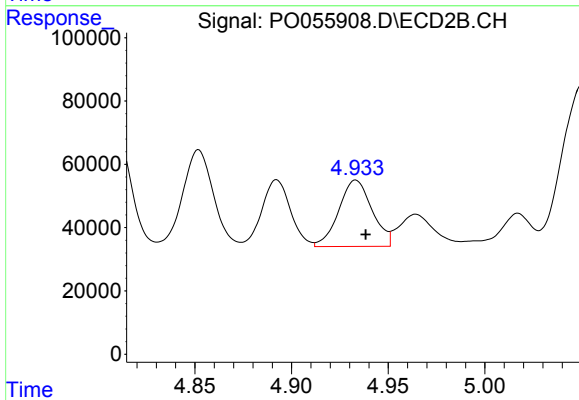
R.T.: 4.892 min
 Delta R.T.: -0.005 min
 Response: 219953
 Conc: 200.18 ng/ml



#23 AR-1248-3

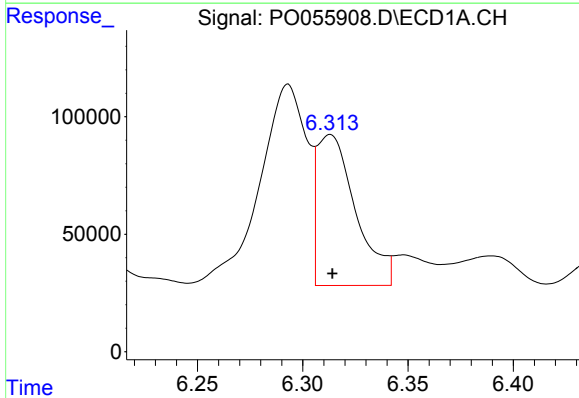
R.T.: 5.909 min
 Delta R.T.: -0.003 min
 Response: 348339
 Conc: 235.89 ng/ml

Instrument :
 ECD_O
 ClientSampleId :
 SB-01-COMPMS



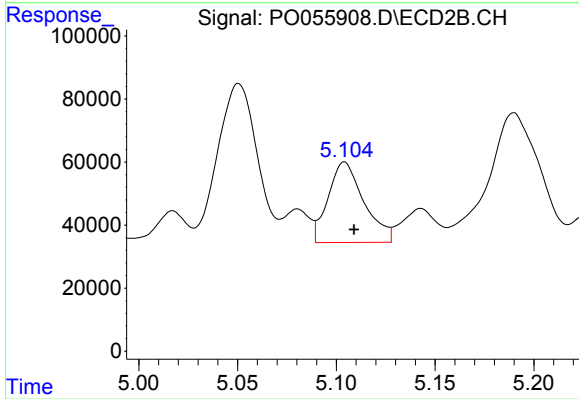
#23 AR-1248-3

R.T.: 4.933 min
 Delta R.T.: -0.005 min
 Response: 252293
 Conc: 222.26 ng/ml



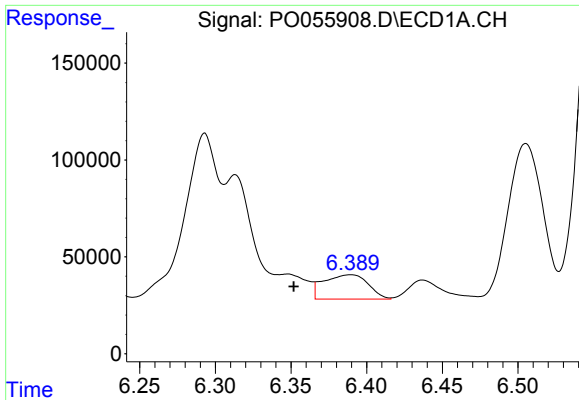
#24 AR-1248-4

R.T.: 6.313 min
 Delta R.T.: -0.001 min
 Response: 820564
 Conc: 470.58 ng/ml



#24 AR-1248-4

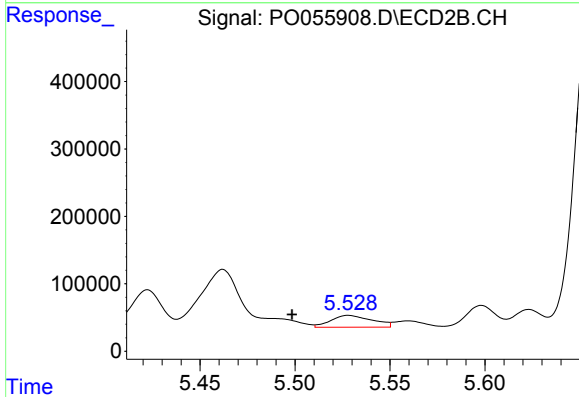
R.T.: 5.104 min
 Delta R.T.: -0.005 min
 Response: 321827
 Conc: 229.19 ng/ml



#25 AR-1248-5

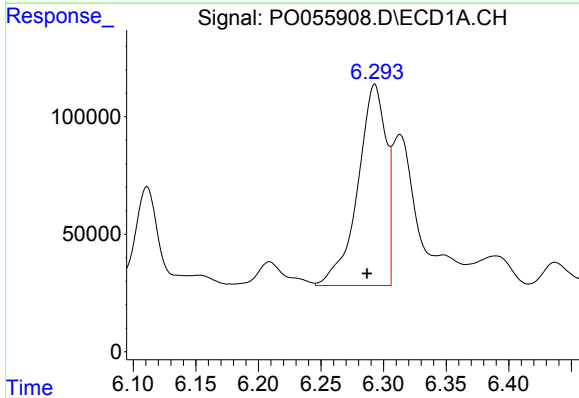
R.T.: 6.389 min
 Delta R.T.: 0.038 min
 Response: 256316
 Conc: 153.45 ng/ml

Instrument :
 ECD_O
ClientSampleId :
 SB-01-COMPMS



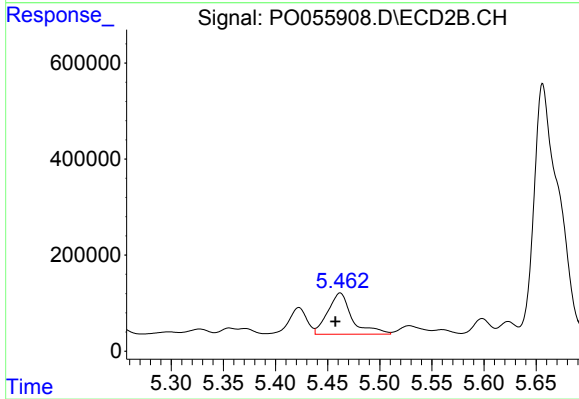
#25 AR-1248-5

R.T.: 5.528 min
 Delta R.T.: 0.030 min
 Response: 266922
 Conc: 178.22 ng/ml



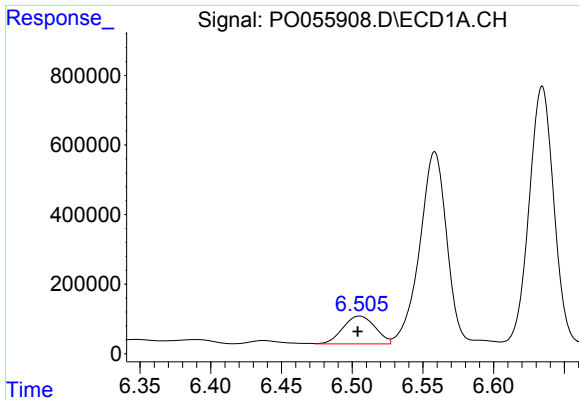
#26 AR-1254-1

R.T.: 6.293 min
 Delta R.T.: 0.006 min
 Response: 1345313
 Conc: 640.68 ng/ml



#26 AR-1254-1

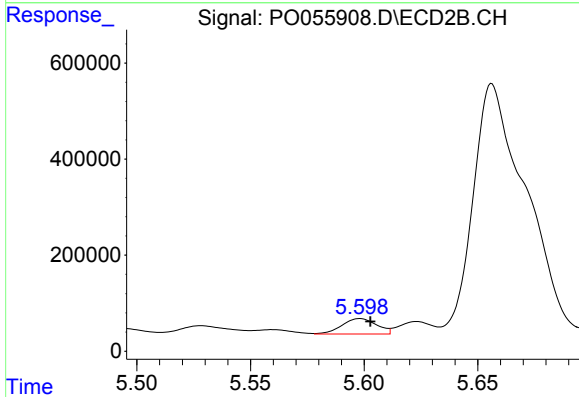
R.T.: 5.462 min
 Delta R.T.: 0.005 min
 Response: 1389398
 Conc: 519.14 ng/ml



#27 AR-1254-2

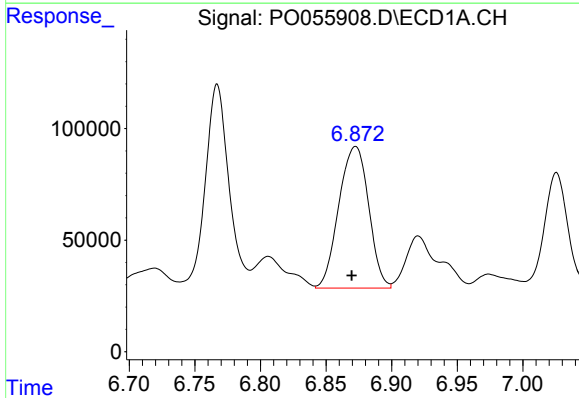
R.T.: 6.505 min
 Delta R.T.: 0.001 min
 Response: 1272063
 Conc: 383.29 ng/ml

Instrument :
 ECD_O
 ClientSampleId :
 SB-01-COMPMS



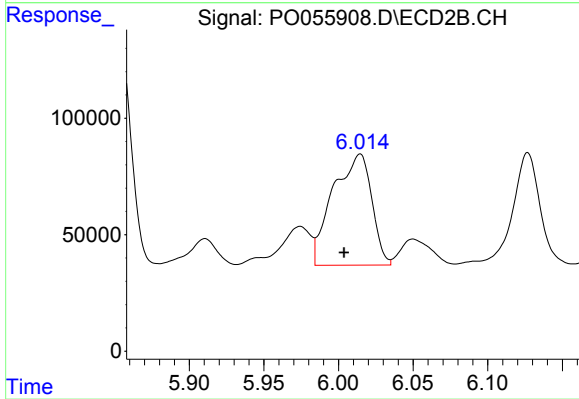
#27 AR-1254-2

R.T.: 5.598 min
 Delta R.T.: -0.005 min
 Response: 343359
 Conc: 140.57 ng/ml



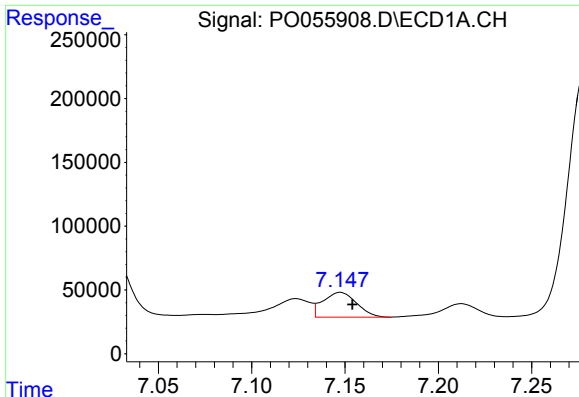
#28 AR-1254-3

R.T.: 6.872 min
 Delta R.T.: 0.003 min
 Response: 1004624
 Conc: 276.34 ng/ml



#28 AR-1254-3

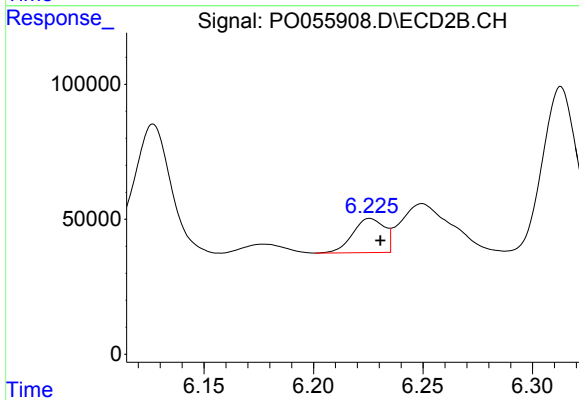
R.T.: 6.015 min
 Delta R.T.: 0.011 min
 Response: 861233
 Conc: 217.07 ng/ml



#29 AR-1254-4

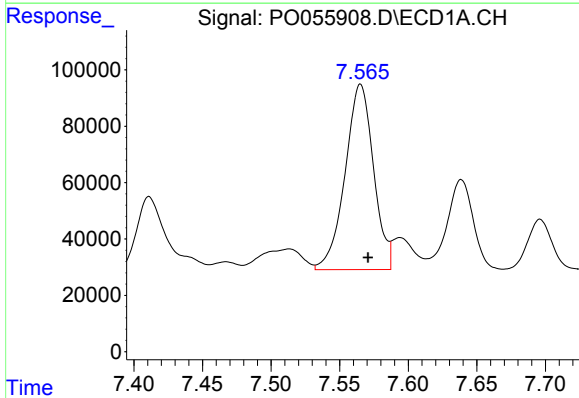
R.T.: 7.148 min
 Delta R.T.: -0.006 min
 Response: 243387
 Conc: 89.46 ng/ml

Instrument :
 ECD_O
 ClientSampleId :
 SB-01-COMPMS



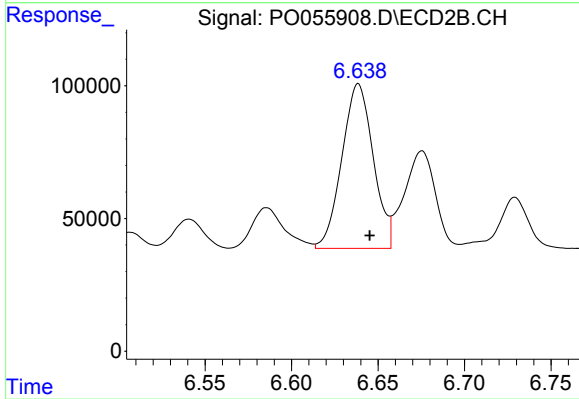
#29 AR-1254-4

R.T.: 6.226 min
 Delta R.T.: -0.005 min
 Response: 127404
 Conc: 47.52 ng/ml



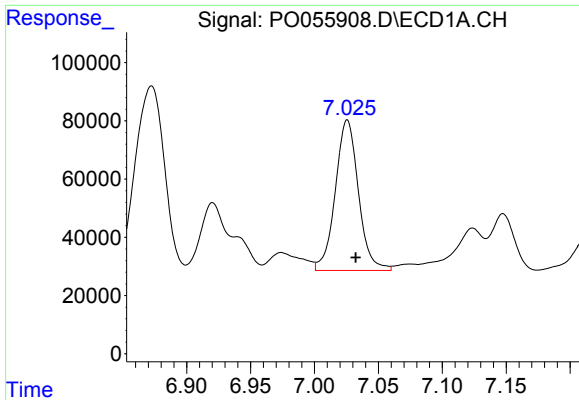
#30 AR-1254-5

R.T.: 7.565 min
 Delta R.T.: -0.006 min
 Response: 948606
 Conc: 330.97 ng/ml



#30 AR-1254-5

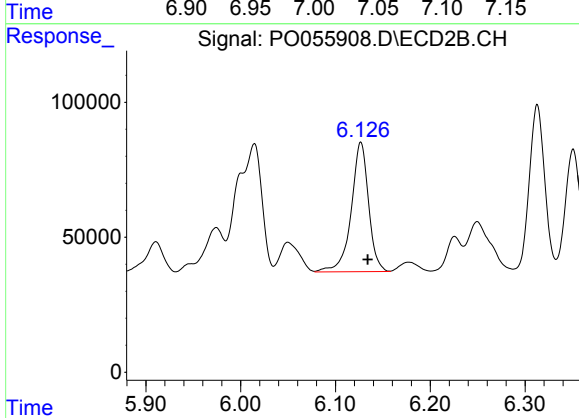
R.T.: 6.639 min
 Delta R.T.: -0.007 min
 Response: 781125
 Conc: 215.86 ng/ml



#31 AR-1260-1

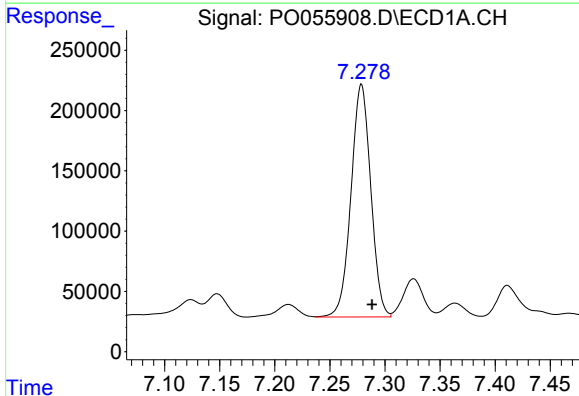
R.T.: 7.026 min
 Delta R.T.: -0.007 min
 Response: 651233
 Conc: 301.57 ng/ml

Instrument :
 ECD_O
 ClientSampleId :
 SB-01-COMPMS



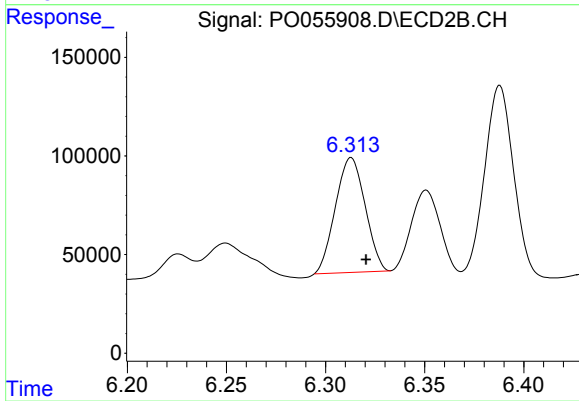
#31 AR-1260-1

R.T.: 6.127 min
 Delta R.T.: -0.007 min
 Response: 609679
 Conc: 276.73 ng/ml



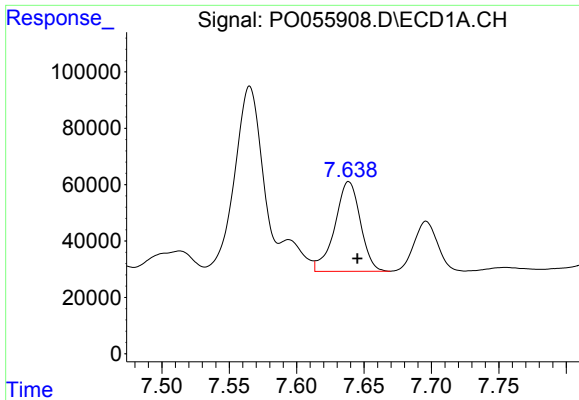
#32 AR-1260-2

R.T.: 7.279 min
 Delta R.T.: -0.010 min
 Response: 2408003
 Conc: 919.48 ng/ml



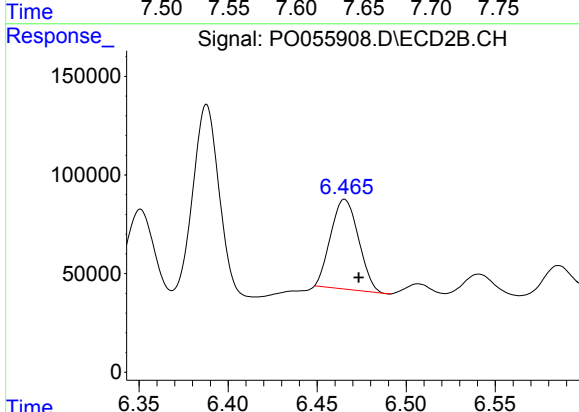
#32 AR-1260-2

R.T.: 6.313 min
 Delta R.T.: -0.007 min
 Response: 606878
 Conc: 198.74 ng/ml

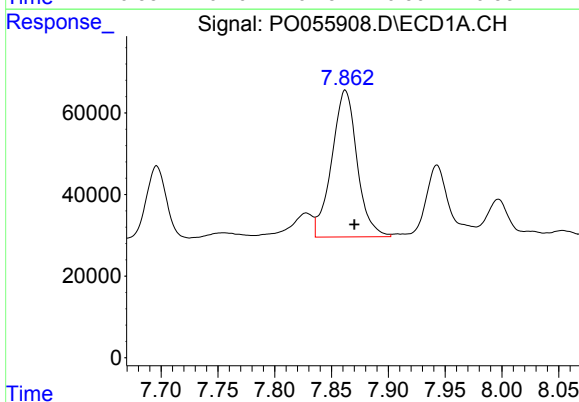


#33 AR-1260-3
 R.T.: 7.639 min
 Delta R.T.: -0.006 min
 Response: 421874
 Conc: 210.94 ng/ml

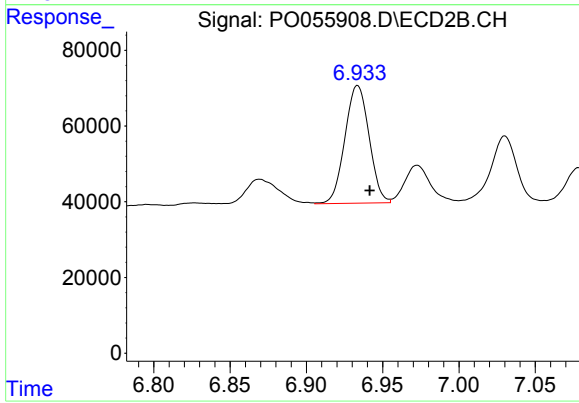
Instrument :
 ECD_O
ClientSampled :
 SB-01-COMPMS



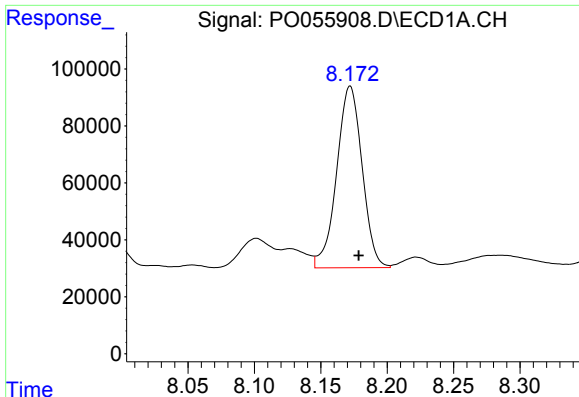
#33 AR-1260-3
 R.T.: 6.465 min
 Delta R.T.: -0.008 min
 Response: 494252
 Conc: 198.33 ng/ml



#34 AR-1260-4
 R.T.: 7.862 min
 Delta R.T.: -0.008 min
 Response: 558586
 Conc: 241.54 ng/ml



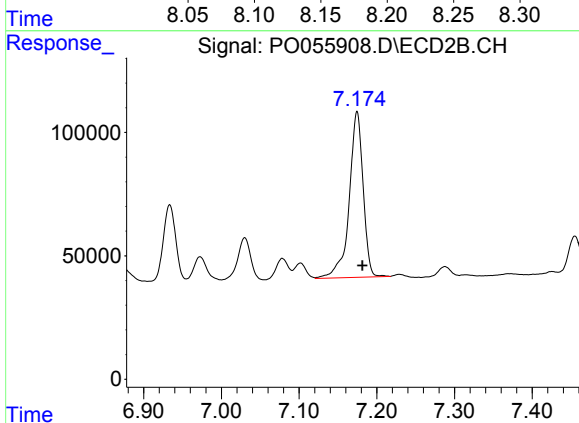
#34 AR-1260-4
 R.T.: 6.934 min
 Delta R.T.: -0.008 min
 Response: 342901
 Conc: 166.18 ng/ml



#35 AR-1260-5

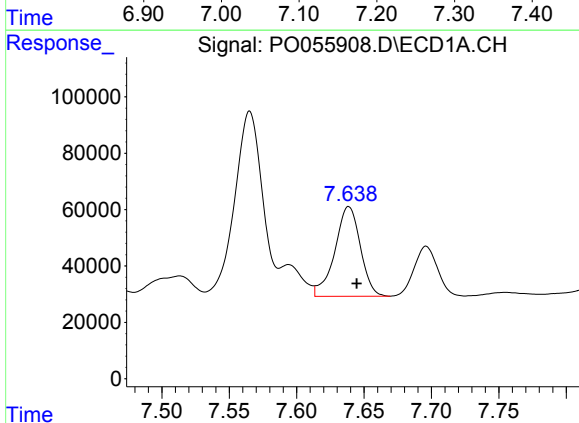
R.T.: 8.172 min
 Delta R.T.: -0.006 min
 Response: 851977
 Conc: 200.83 ng/ml

Instrument :
 ECD_O
 ClientSampled :
 SB-01-COMPMS



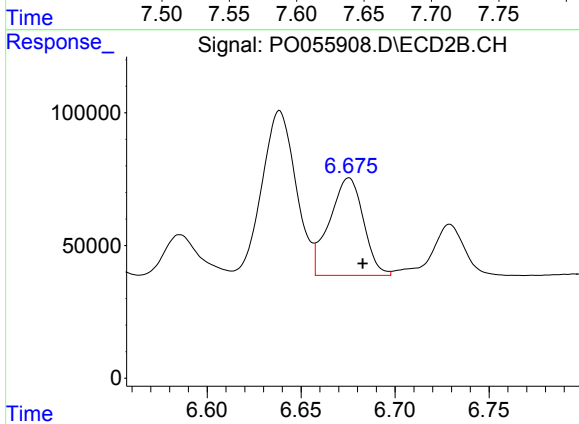
#35 AR-1260-5

R.T.: 7.175 min
 Delta R.T.: -0.007 min
 Response: 837502
 Conc: 166.76 ng/ml



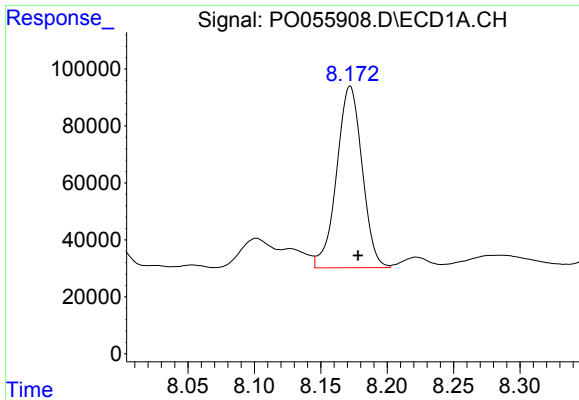
#36 AR-1262-1

R.T.: 7.639 min
 Delta R.T.: -0.006 min
 Response: 421874
 Conc: 131.60 ng/ml



#36 AR-1262-1

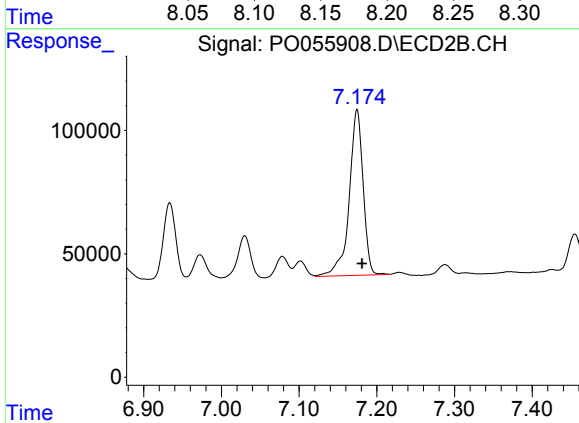
R.T.: 6.675 min
 Delta R.T.: -0.007 min
 Response: 462323
 Conc: 112.74 ng/ml



#37 AR-1262-2

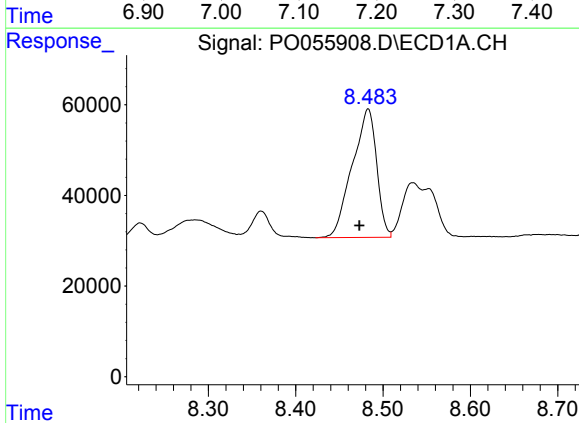
R.T.: 8.172 min
 Delta R.T.: -0.006 min
 Response: 851977
 Conc: 158.69 ng/ml

Instrument :
 ECD_O
 ClientSampleId :
 SB-01-COMPMS



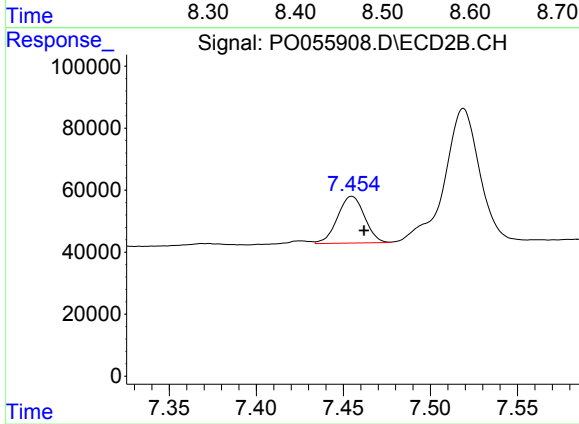
#37 AR-1262-2

R.T.: 7.175 min
 Delta R.T.: -0.007 min
 Response: 837502
 Conc: 133.94 ng/ml



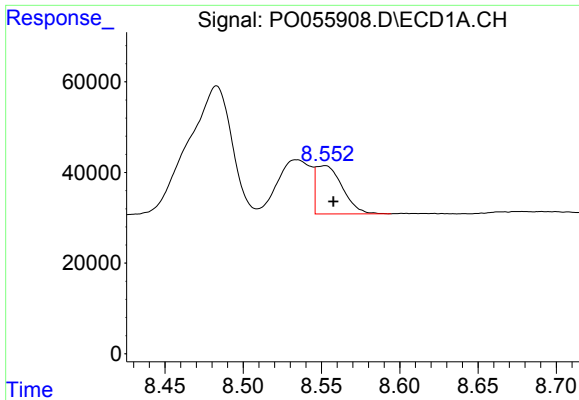
#38 AR-1262-3

R.T.: 8.483 min
 Delta R.T.: 0.010 min
 Response: 550485
 Conc: 151.70 ng/ml



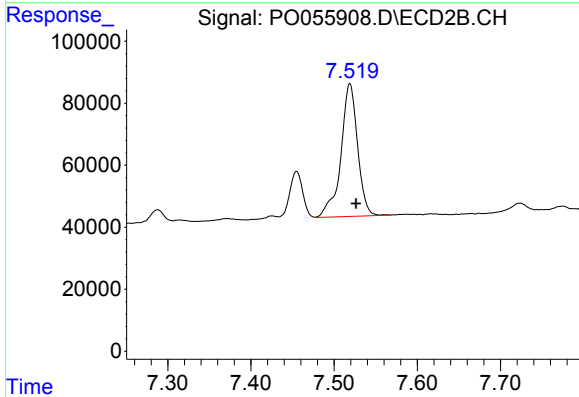
#38 AR-1262-3

R.T.: 7.455 min
 Delta R.T.: -0.007 min
 Response: 163358
 Conc: 66.33 ng/ml

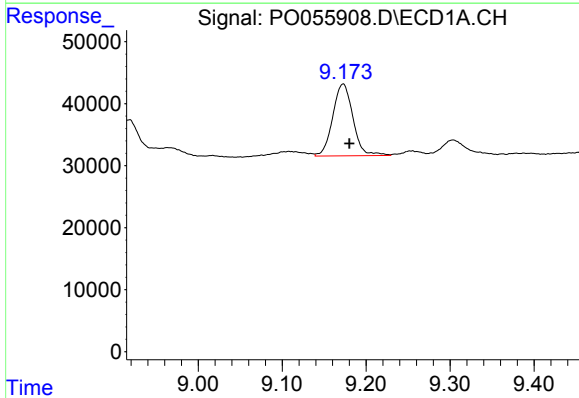


#39 AR-1262-4
 R.T.: 8.552 min
 Delta R.T.: -0.006 min
 Response: 124583
 Conc: 45.89 ng/ml

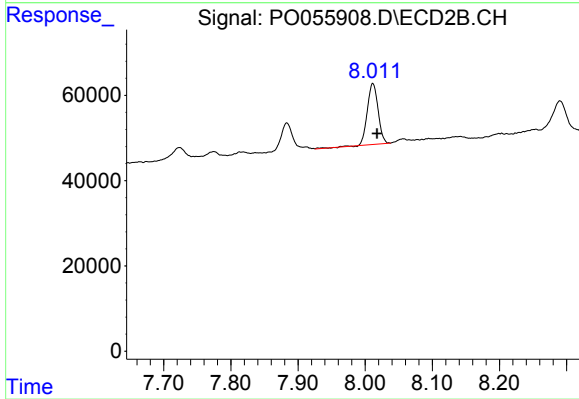
Instrument :
 ECD_O
ClientSampleId :
 SB-01-COMPMS



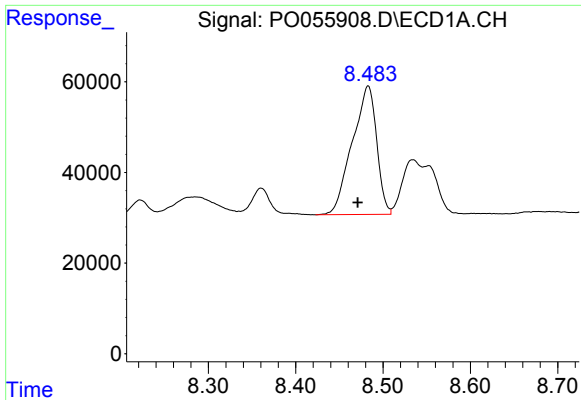
#39 AR-1262-4
 R.T.: 7.519 min
 Delta R.T.: -0.007 min
 Response: 597844
 Conc: 146.00 ng/ml



#40 AR-1262-5
 R.T.: 9.173 min
 Delta R.T.: -0.007 min
 Response: 193685
 Conc: 107.21 ng/ml



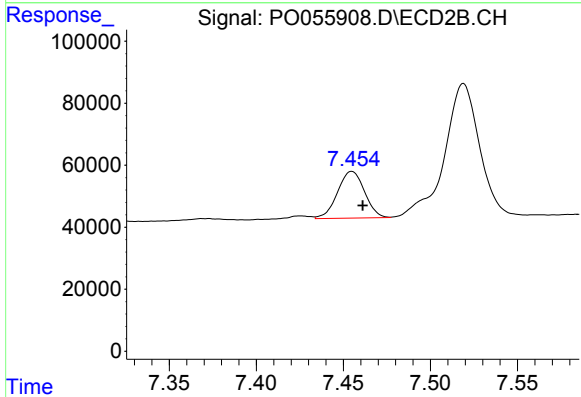
#40 AR-1262-5
 R.T.: 8.011 min
 Delta R.T.: -0.006 min
 Response: 160061
 Conc: 93.93 ng/ml



#41 AR-1268-1

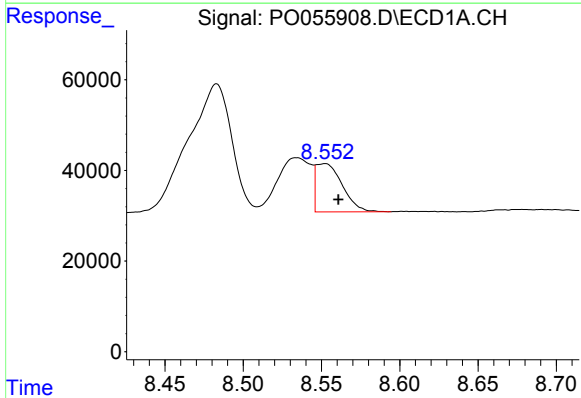
R.T.: 8.483 min
 Delta R.T.: 0.012 min
 Response: 550485
 Conc: 91.16 ng/ml

Instrument :
 ECD_O
 ClientSampled :
 SB-01-COMPMS



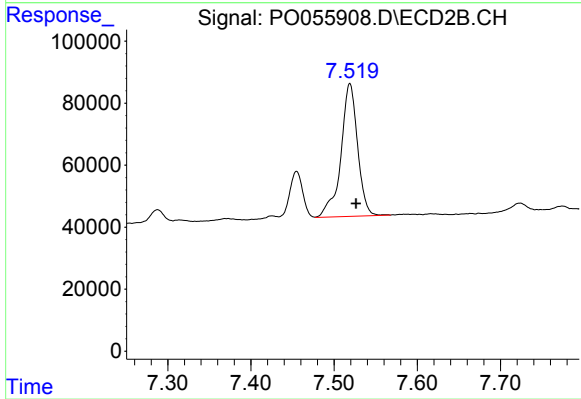
#41 AR-1268-1

R.T.: 7.455 min
 Delta R.T.: -0.006 min
 Response: 163358
 Conc: 23.58 ng/ml



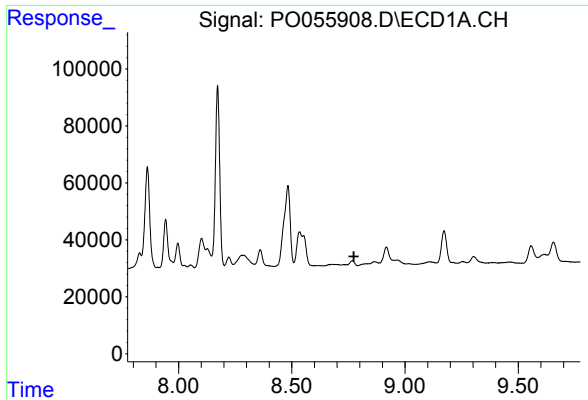
#42 AR-1268-2

R.T.: 8.552 min
 Delta R.T.: -0.009 min
 Response: 124583
 Conc: 22.76 ng/ml



#42 AR-1268-2

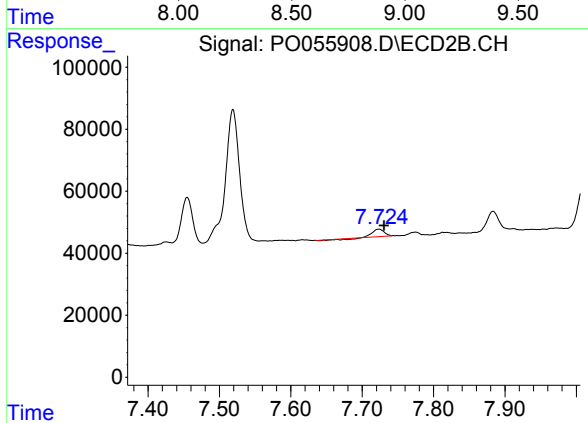
R.T.: 7.519 min
 Delta R.T.: -0.008 min
 Response: 597844
 Conc: 105.08 ng/ml



#43 AR-1268-3

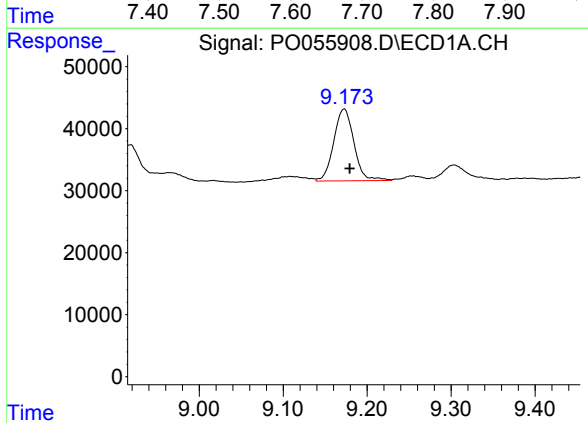
R.T.: 0.000 min
 Exp R.T.: 8.774 min
 Response: 0
 Conc: N.D.

Instrument :
 ECD_O
ClientSampled :
 SB-01-COMPMS



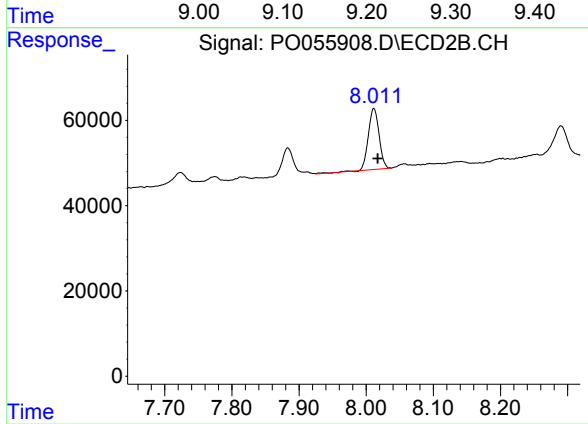
#43 AR-1268-3

R.T.: 7.724 min
 Delta R.T.: -0.007 min
 Response: 21658
 Conc: 4.59 ng/ml



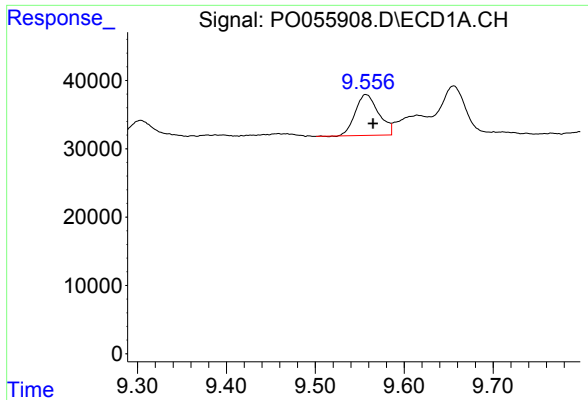
#44 AR-1268-4

R.T.: 9.173 min
 Delta R.T.: -0.007 min
 Response: 193685
 Conc: 98.71 ng/ml



#44 AR-1268-4

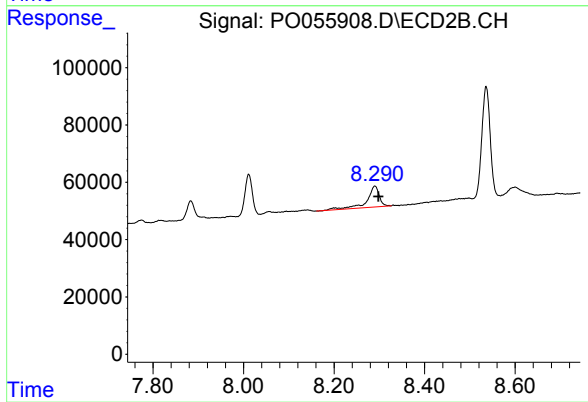
R.T.: 8.011 min
 Delta R.T.: -0.006 min
 Response: 160061
 Conc: 84.61 ng/ml



#45 AR-1268-5

R.T.: 9.557 min
Delta R.T.: -0.008 min
Response: 109528
Conc: 8.12 ng/ml

Instrument :
ECD_O
ClientSampleId :
SB-01-COMPMS



#45 AR-1268-5

R.T.: 8.290 min
Delta R.T.: -0.008 min
Response: 139412
Conc: 11.45 ng/ml