

Data Path : Z:\pestpcbsrv\HPCHEM1\ECD_0\Data\P0050619\
 Data File : P0055898.D
 Signal(s) : Signal #1: ECD1A.CH Signal #2: ECD2B.CH
 Acq On : 06 May 2019 16:36
 Operator : SM/SJ
 Sample : PB119436BS
 Misc :
 ALS Vial : 5 Sample Multiplier: 1

Instrument :
 ECD_0
ClientSampleId :
 PB119436BS

Manual Integrations
APPROVED
 Ankita
 5/7/2019 1:15:01 PM

Integration File signal 1: autoint1.e
 Integration File signal 2: autoint2.e
 Quant Time: May 07 02:33:07 2019
 Quant Method : Z:\pestpcbsrv\HPCHEM1\ECD_0\methods\P0050319.M
 Quant Title : GC EXTRACTABLES
 QLast Update : Fri May 03 15:20:04 2019
 Response via : Initial Calibration
 Integrator: ChemStation 6890 Scale Mode: Small noise peaks clipped

Volume Inj. : 2 µl
 Signal #1 Phase : ZB-MR1 Signal #2 Phase: ZB-MR2
 Signal #1 Info : 30Mx0.32mmx 0.50µ Signal #2 Info : 30M x 0.32mm x 0.25µm

Compound	RT#1	RT#2	Resp#1	Resp#2	ng/ml	ng/ml

System Monitoring Compounds						
1) SA Tetrachlo...	4.274	3.588	544523	493284	18.196	17.465
2) SA Decachlor...	9.872	8.537	769745	554468	20.572	20.503
Target Compounds						
3) L1 AR-1016-1	5.436	4.660	308170	268962	216.850	200.134
4) L1 AR-1016-2	5.458	4.678	429388	364285	216.986	199.504
5) L1 AR-1016-3	5.519	4.853	275036	201447	214.581	201.019
6) L1 AR-1016-4	5.618	4.893	224413	160683	214.702	197.488
7) L1 AR-1016-5	5.909	5.105	235973	213214	209.471	193.679
31) L7 AR-1260-1	7.028	6.128	501766	457848	232.354	207.812
32) L7 AR-1260-2	7.284	6.314	595503	615875	227.388	201.690m
33) L7 AR-1260-3	7.641	6.467	381423	519216	190.713	208.351m
34) L7 AR-1260-4	7.865	6.935	457692	383213	197.912	185.713
35) L7 AR-1260-5	8.175	7.176	799917	897367	188.557	178.678

(f)=RT Delta > 1/2 Window (#)=Amounts differ by > 25% (m)=manual int.

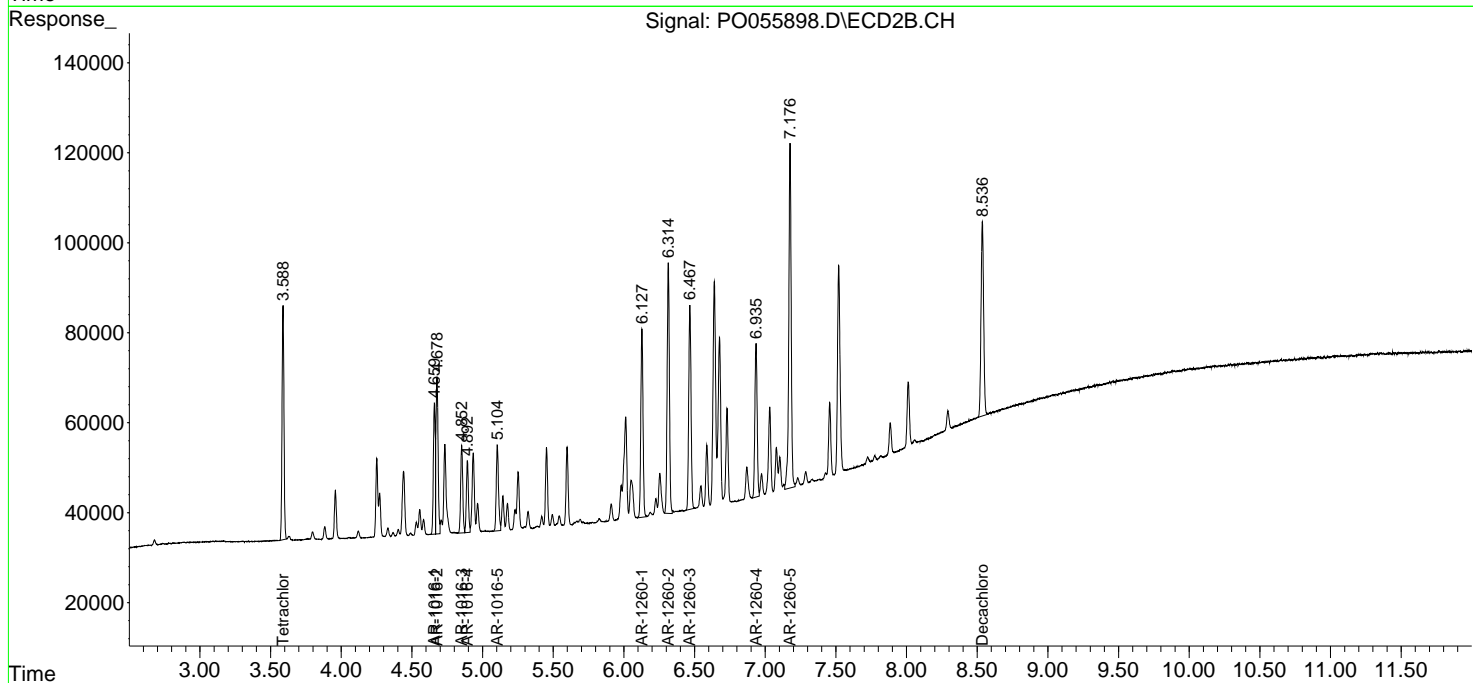
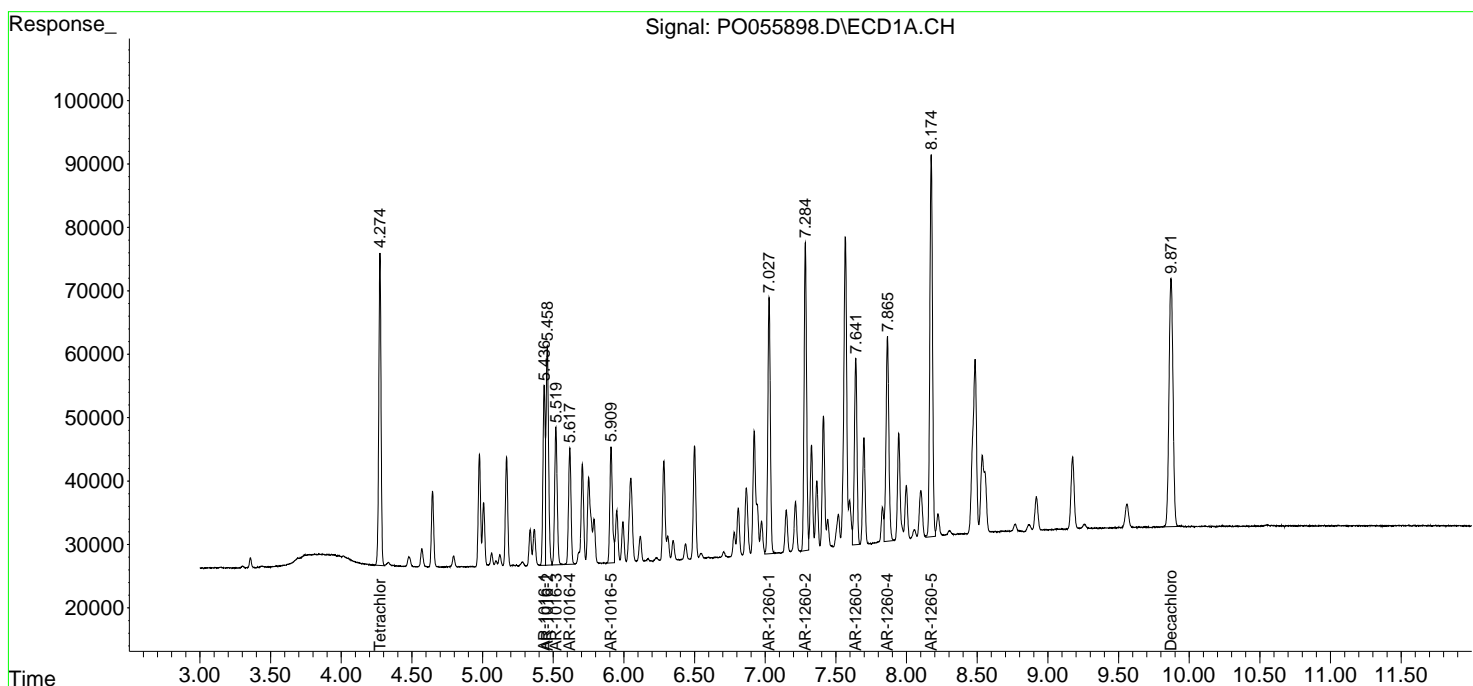
Data Path : Z:\pestpcbsrv\HPCHEM1\ECD_O\Data\P0050619\
 Data File : P0055898.D
 Signal(s) : Signal #1: ECD1A.CH Signal #2: ECD2B.CH
 Acq On : 06 May 2019 16:36
 Operator : SM/SJ
 Sample : PB119436BS
 Misc :
 ALS Vial : 5 Sample Multiplier: 1

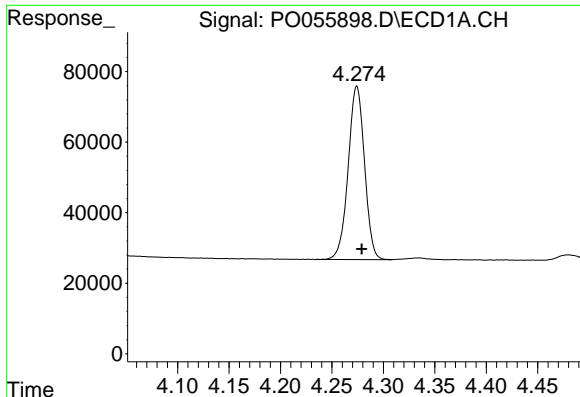
Instrument :
 ECD_O
Client Sampled :
 PB119436BS

Manual Integrations
APPROVED
 Ankita
 5/7/2019 1:15:01 PM

Integration File signal 1: autoint1.e
 Integration File signal 2: autoint2.e
 Quant Time: May 07 02:33:07 2019
 Quant Method : Z:\pestpcbsrv\HPCHEM1\ECD_O\methods\P0050319.M
 Quant Title : GC EXTRACTABLES
 QLast Update : Fri May 03 15:20:04 2019
 Response via : Initial Calibration
 Integrator: ChemStation 6890 Scale Mode: Small noise peaks clipped

Volume Inj. : 2 µl
 Signal #1 Phase : ZB-MR1 Signal #2 Phase: ZB-MR2
 Signal #1 Info : 30Mx0.32mmx 0.50µ Signal #2 Info : 30M x 0.32mm x 0.25µm



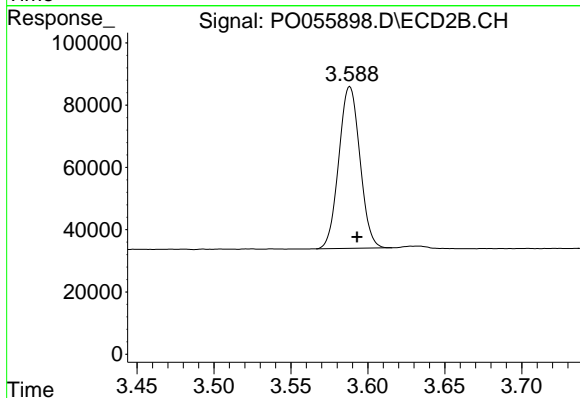


#1 Tetrachloro-m-xylene
 R.T.: 4.274 min
 Delta R.T.: -0.005 min
 Response: 544523
 Conc: 18.20 ng/ml

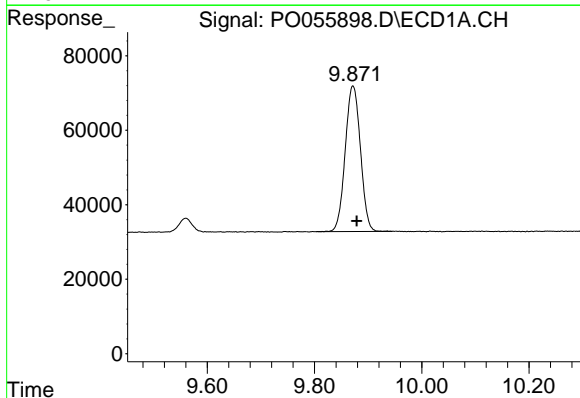
Instrument :
 ECD_O
 ClientSampled :
 PB119436BS

Manual Integrations
 APPROVED

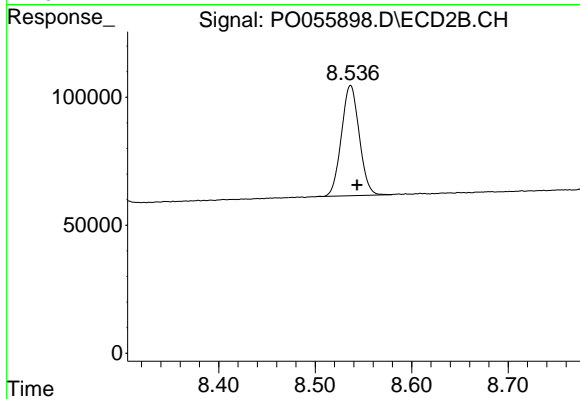
Ankita
 5/7/2019 1:15:01 PM



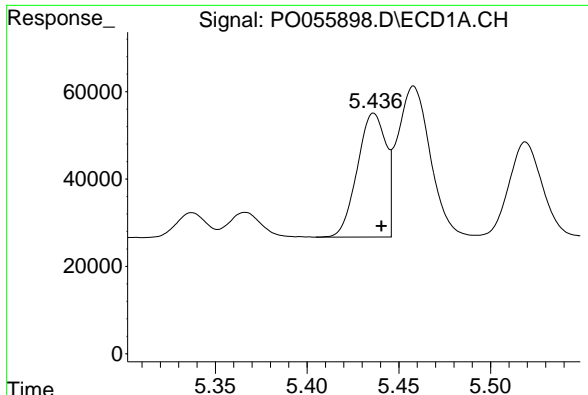
#1 Tetrachloro-m-xylene
 R.T.: 3.588 min
 Delta R.T.: -0.005 min
 Response: 493284
 Conc: 17.47 ng/ml



#2 Decachlorobiphenyl
 R.T.: 9.872 min
 Delta R.T.: -0.007 min
 Response: 769745
 Conc: 20.57 ng/ml



#2 Decachlorobiphenyl
 R.T.: 8.537 min
 Delta R.T.: -0.007 min
 Response: 554468
 Conc: 20.50 ng/ml

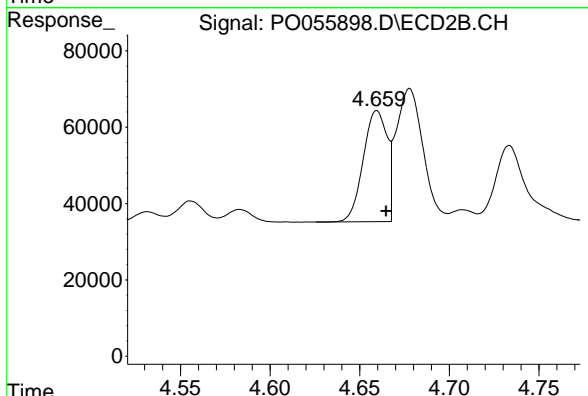


#3 AR-1016-1

R.T.: 5.436 min
 Delta R.T.: -0.004 min
 Response: 308170
 Conc: 216.85 ng/ml

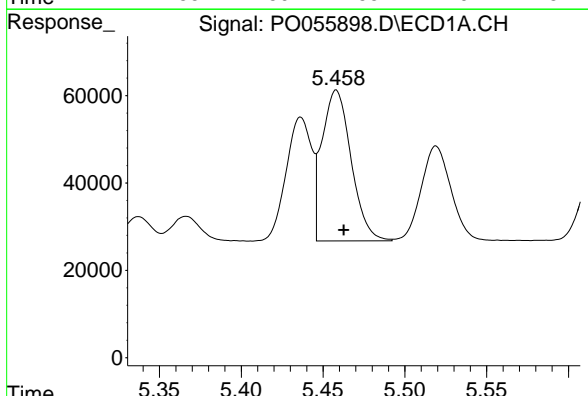
Instrument :
 ECD_O
ClientSampled :
 PB119436BS

Manual Integrations
APPROVED
 Ankita
 5/7/2019 1:15:01 PM



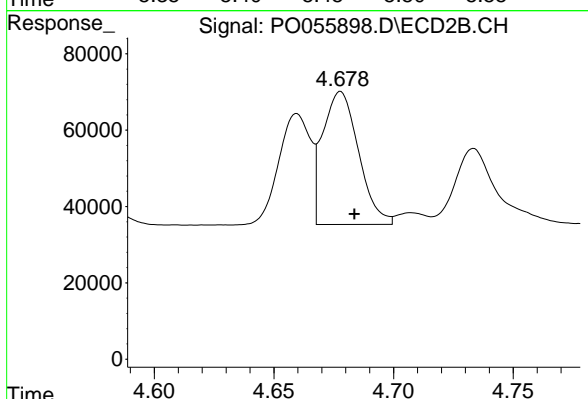
#3 AR-1016-1

R.T.: 4.660 min
 Delta R.T.: -0.005 min
 Response: 268962
 Conc: 200.13 ng/ml



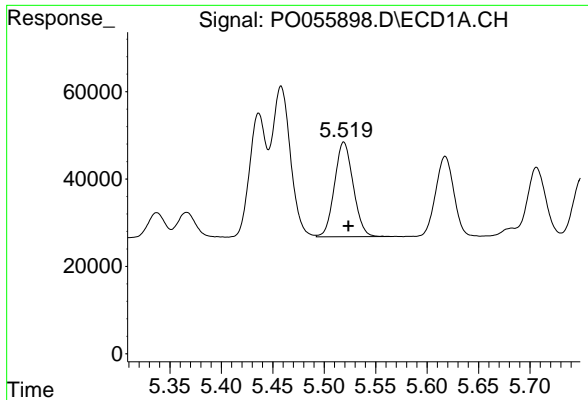
#4 AR-1016-2

R.T.: 5.458 min
 Delta R.T.: -0.005 min
 Response: 429388
 Conc: 216.99 ng/ml



#4 AR-1016-2

R.T.: 4.678 min
 Delta R.T.: -0.006 min
 Response: 364285
 Conc: 199.50 ng/ml

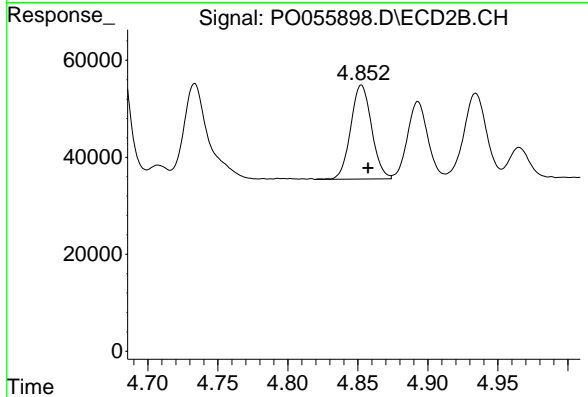


#5 AR-1016-3

R.T.: 5.519 min
 Delta R.T.: -0.005 min
 Response: 275036
 Conc: 214.58 ng/ml

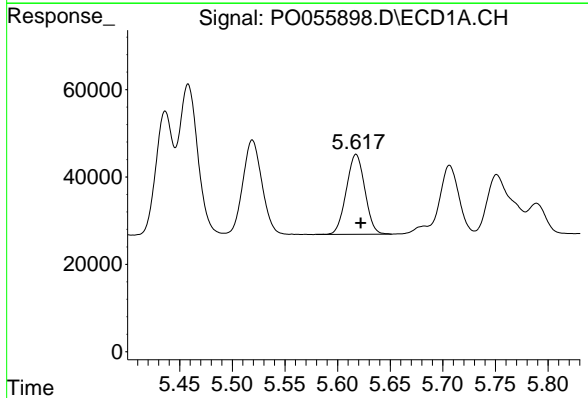
Instrument :
 ECD_O
 ClientSampled :
 PB119436BS

Manual Integrations
APPROVED
 Ankita
 5/7/2019 1:15:01 PM



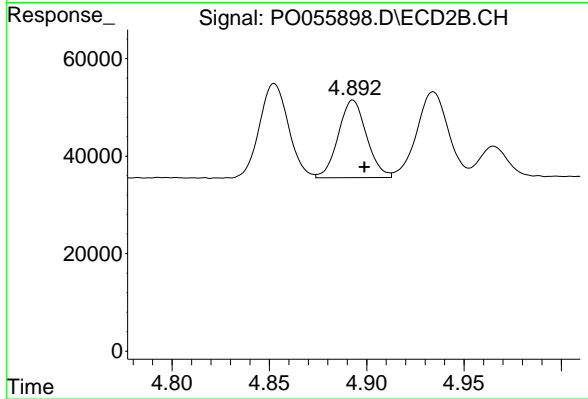
#5 AR-1016-3

R.T.: 4.853 min
 Delta R.T.: -0.005 min
 Response: 201447
 Conc: 201.02 ng/ml



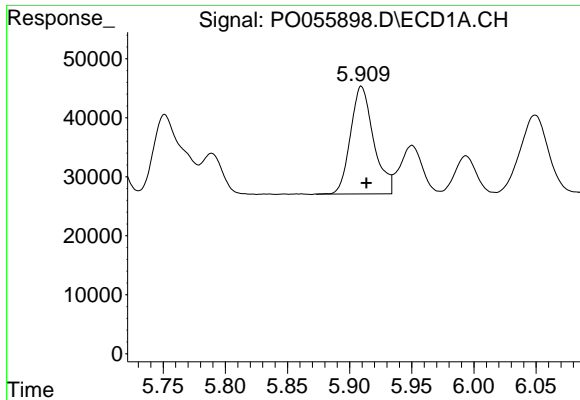
#6 AR-1016-4

R.T.: 5.618 min
 Delta R.T.: -0.004 min
 Response: 224413
 Conc: 214.70 ng/ml



#6 AR-1016-4

R.T.: 4.893 min
 Delta R.T.: -0.006 min
 Response: 160683
 Conc: 197.49 ng/ml

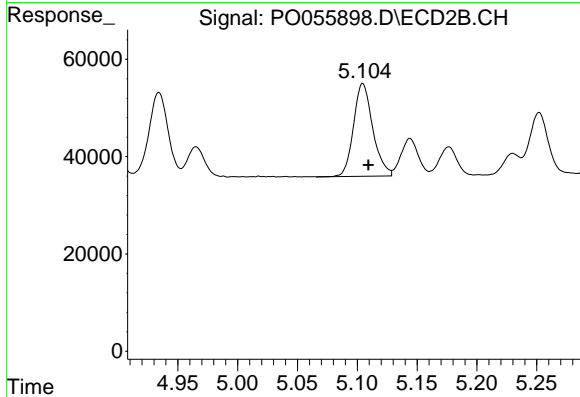


#7 AR-1016-5

R.T.: 5.909 min
 Delta R.T.: -0.004 min
 Response: 235973
 Conc: 209.47 ng/ml

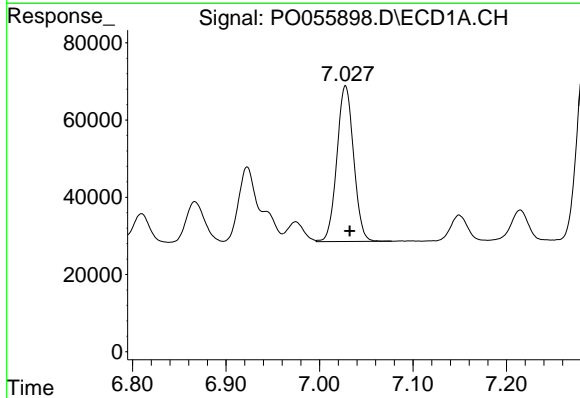
Instrument :
 ECD_O
ClientSampled :
 PB119436BS

Manual Integrations
APPROVED
 Ankita
 5/7/2019 1:15:01 PM



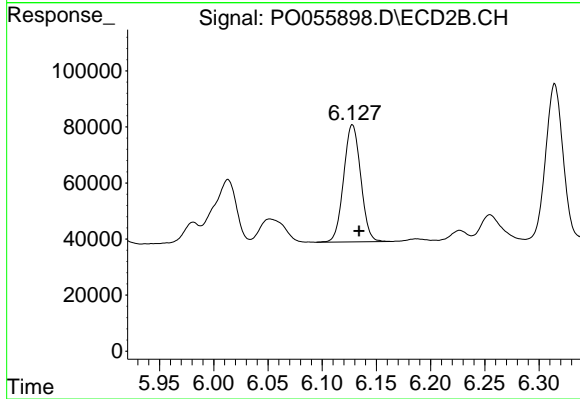
#7 AR-1016-5

R.T.: 5.105 min
 Delta R.T.: -0.005 min
 Response: 213214
 Conc: 193.68 ng/ml



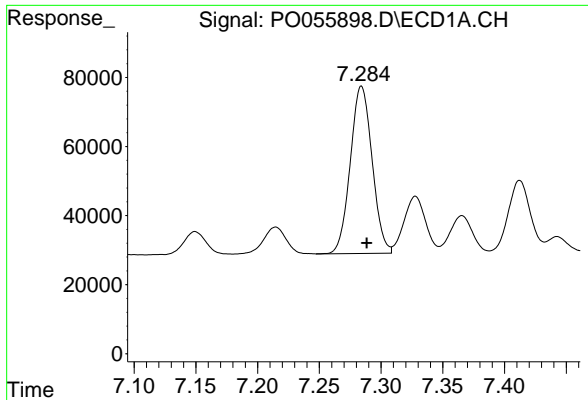
#31 AR-1260-1

R.T.: 7.028 min
 Delta R.T.: -0.004 min
 Response: 501766
 Conc: 232.35 ng/ml



#31 AR-1260-1

R.T.: 6.128 min
 Delta R.T.: -0.006 min
 Response: 457848
 Conc: 207.81 ng/ml

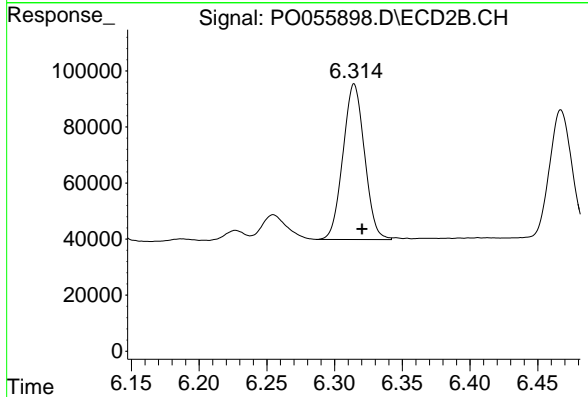


#32 AR-1260-2

R.T.: 7.284 min
 Delta R.T.: -0.004 min
 Response: 595503
 Conc: 227.39 ng/ml

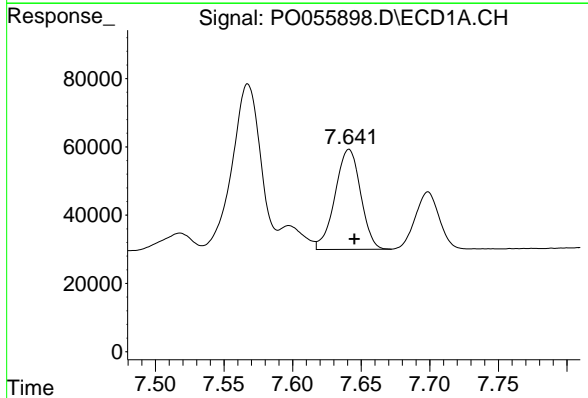
Instrument :
 ECD_O
ClientSampled :
 PB119436BS

Manual Integrations
APPROVED
 Ankita
 5/7/2019 1:15:01 PM



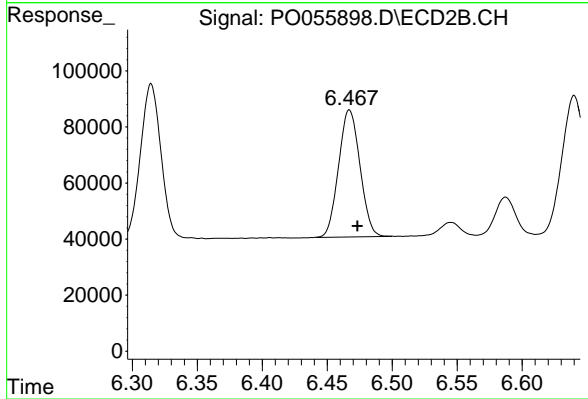
#32 AR-1260-2

R.T.: 6.314 min
 Delta R.T.: -0.006 min
 Response: 615875
 Conc: 201.69 ng/ml m



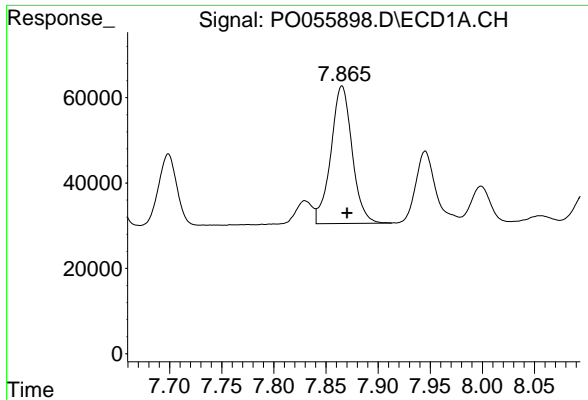
#33 AR-1260-3

R.T.: 7.641 min
 Delta R.T.: -0.004 min
 Response: 381423
 Conc: 190.71 ng/ml



#33 AR-1260-3

R.T.: 6.467 min
 Delta R.T.: -0.007 min
 Response: 519216
 Conc: 208.35 ng/ml m

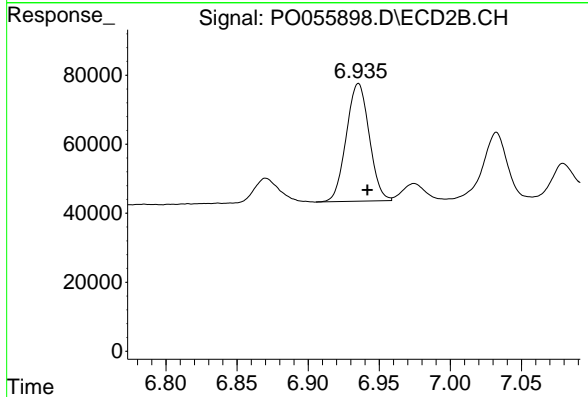


#34 AR-1260-4

R.T.: 7.865 min
 Delta R.T.: -0.005 min
 Response: 457692
 Conc: 197.91 ng/ml

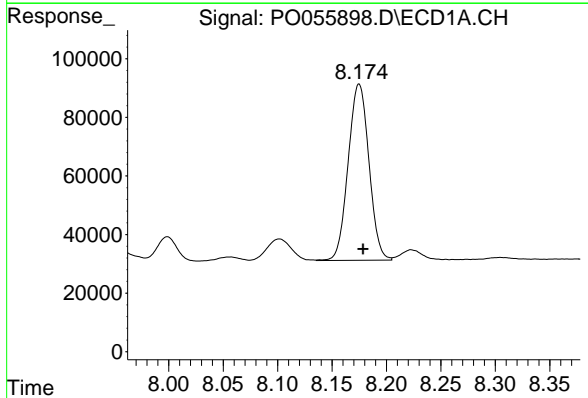
Instrument :
 ECD_O
ClientSampled :
 PB119436BS

Manual Integrations
APPROVED
 Ankita
 5/7/2019 1:15:01 PM



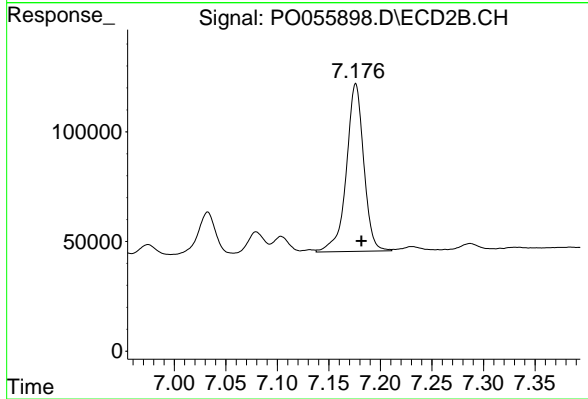
#34 AR-1260-4

R.T.: 6.935 min
 Delta R.T.: -0.006 min
 Response: 383213
 Conc: 185.71 ng/ml



#35 AR-1260-5

R.T.: 8.175 min
 Delta R.T.: -0.004 min
 Response: 799917
 Conc: 188.56 ng/ml



#35 AR-1260-5

R.T.: 7.176 min
 Delta R.T.: -0.006 min
 Response: 897367
 Conc: 178.68 ng/ml