

Data Path : Z:\pestpcbsrv\HPCHEM1\ECD\_0\Data\P0050619\  
 Data File : P0055901.D  
 Signal(s) : Signal #1: ECD1A.CH Signal #2: ECD2B.CH  
 Acq On : 06 May 2019 17:26  
 Operator : SM/SJ  
 Sample : PB119481BSD  
 Misc :  
 ALS Vial : 29 Sample Multiplier: 1

Instrument :  
 ECD\_0  
 ClientSampleId :  
 PB119481BSD

Manual Integrations  
 APPROVED

Ankita  
 5/7/2019 1:15:38 PM

Integration File signal 1: autoint1.e  
 Integration File signal 2: autoint2.e  
 Quant Time: May 07 02:34:19 2019  
 Quant Method : Z:\pestpcbsrv\HPCHEM1\ECD\_0\methods\P0050319.M  
 Quant Title : GC EXTRACTABLES  
 QLast Update : Fri May 03 15:20:04 2019  
 Response via : Initial Calibration  
 Integrator: ChemStation 6890 Scale Mode: Small noise peaks clipped

Volume Inj. : 2 µl  
 Signal #1 Phase : ZB-MR2 Signal #2 Phase: ZB-MR2  
 Signal #1 Info : 30Mx0.32mmx 0.50µ Signal #2 Info : 30M x 0.32mm x 0.25µm

Compound	RT#1	RT#2	Resp#1	Resp#2	ng/ml	ng/ml
-----						
System Monitoring Compounds						
1) SA Tetrachlo...	4.274	3.588	620466	565378	20.734	20.018
2) SA Decachlor...	9.870	8.536	866120	629535	23.148	23.279
Target Compounds						
3) L1 AR-1016-1	5.435	4.660	368567	323985	259.350	241.076
4) L1 AR-1016-2	5.457	4.678	514919	437149	260.208	239.409
5) L1 AR-1016-3	5.518	4.852	331665	241668	258.762	241.155
6) L1 AR-1016-4	5.617	4.893	273121	192763	261.303	236.916
7) L1 AR-1016-5	5.908	5.105	282769	257672	251.012	234.065
31) L7 AR-1260-1	7.026	6.127	594511	541305	275.301	245.692
32) L7 AR-1260-2	7.282	6.314	699529	714212	267.109	233.894m
33) L7 AR-1260-3	7.639	6.466	453921	619359	226.962	248.536m
34) L7 AR-1260-4	7.863	6.934	541941	450857	234.342	218.494
35) L7 AR-1260-5	8.173	7.175	938327	1062730	221.183	211.603
-----						

(f)=RT Delta > 1/2 Window (#)=Amounts differ by > 25% (m)=manual int.

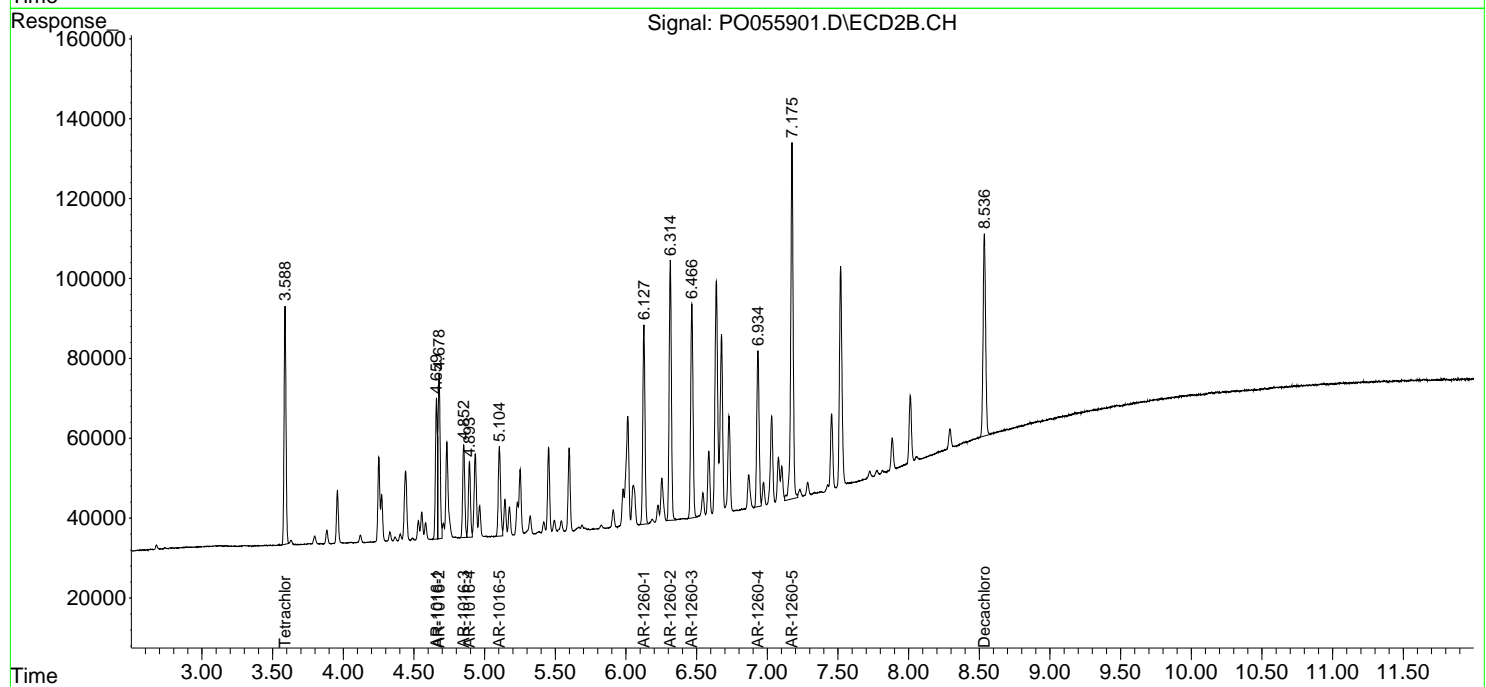
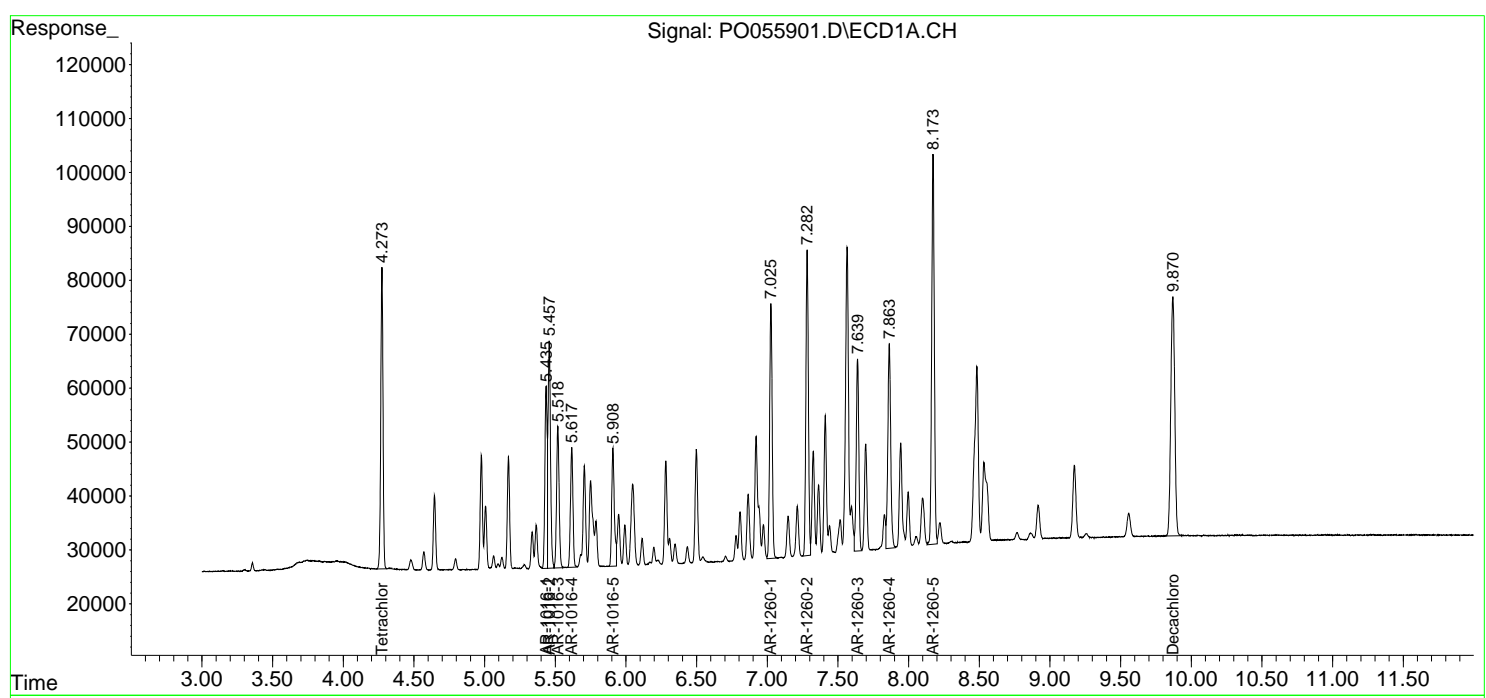
Data Path : Z:\pestpcbsrv\HPCHEM1\ECD\_O\Data\P0050619\  
 Data File : P0055901.D  
 Signal(s) : Signal #1: ECD1A.CH Signal #2: ECD2B.CH  
 Acq On : 06 May 2019 17:26  
 Operator : SM/SJ  
 Sample : PB119481BSD  
 Misc :  
 ALS Vial : 29 Sample Multiplier: 1

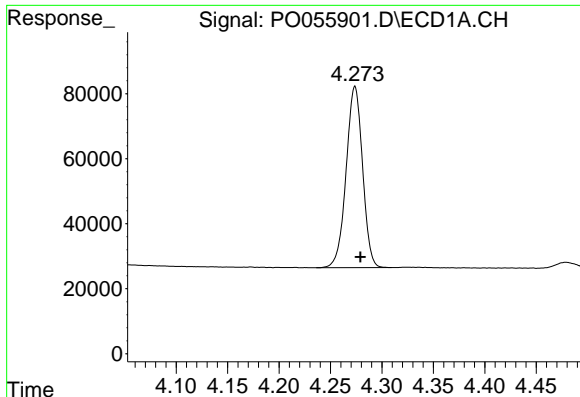
**Instrument :**  
 ECD\_O  
**Client Sampled :**  
 PB119481BSD

**Manual Integrations**  
**APPROVED**  
 Ankita  
 5/7/2019 1:15:38 PM

Integration File signal 1: autoint1.e  
 Integration File signal 2: autoint2.e  
 Quant Time: May 07 02:34:19 2019  
 Quant Method : Z:\pestpcbsrv\HPCHEM1\ECD\_O\methods\P0050319.M  
 Quant Title : GC EXTRACTABLES  
 QLast Update : Fri May 03 15:20:04 2019  
 Response via : Initial Calibration  
 Integrator: ChemStation 6890 Scale Mode: Small noise peaks clipped

Volume Inj. : 2 µl  
 Signal #1 Phase : ZB-MR1 Signal #2 Phase: ZB-MR2  
 Signal #1 Info : 30Mx0.32mmx 0.50µ Signal #2 Info : 30M x 0.32mm x 0.25µm

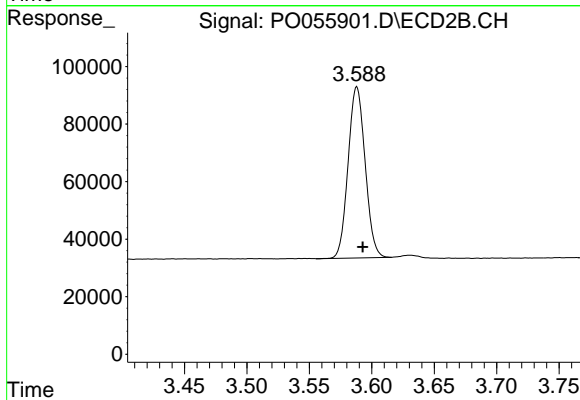




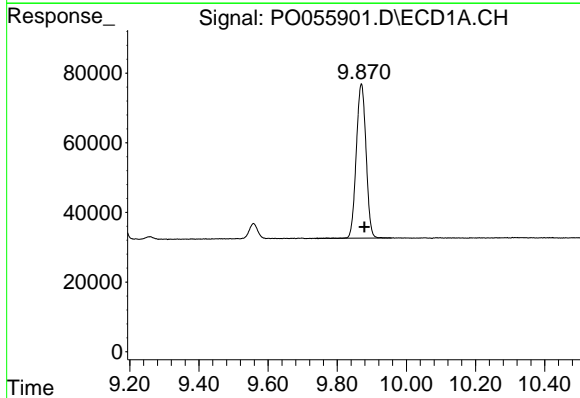
#1 Tetrachloro-m-xylene  
 R.T.: 4.274 min  
 Delta R.T.: -0.005 min  
 Response: 620466  
 Conc: 20.73 ng/ml

Instrument :  
 ECD\_O  
 ClientSampleId :  
 PB119481BSD

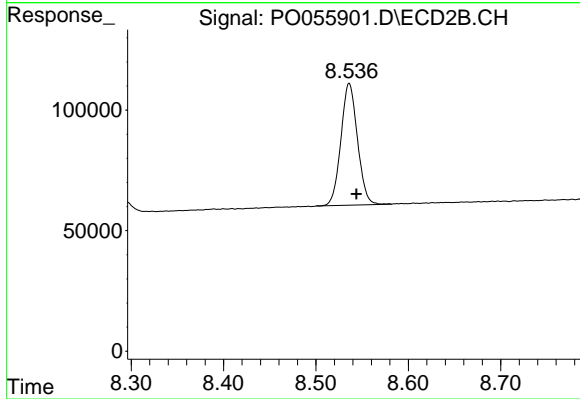
Manual Integrations  
 APPROVED  
 Ankita  
 5/7/2019 1:15:38 PM



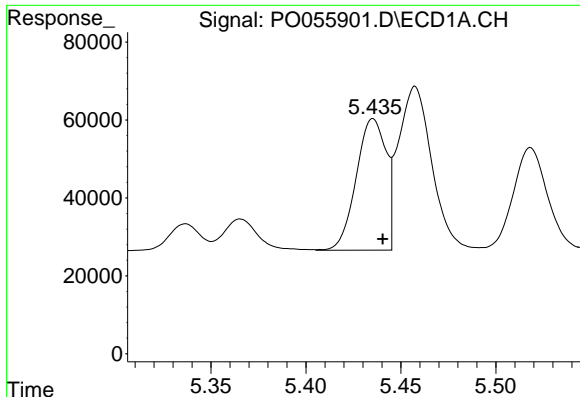
#1 Tetrachloro-m-xylene  
 R.T.: 3.588 min  
 Delta R.T.: -0.005 min  
 Response: 565378  
 Conc: 20.02 ng/ml



#2 Decachlorobiphenyl  
 R.T.: 9.870 min  
 Delta R.T.: -0.009 min  
 Response: 866120  
 Conc: 23.15 ng/ml



#2 Decachlorobiphenyl  
 R.T.: 8.536 min  
 Delta R.T.: -0.008 min  
 Response: 629535  
 Conc: 23.28 ng/ml



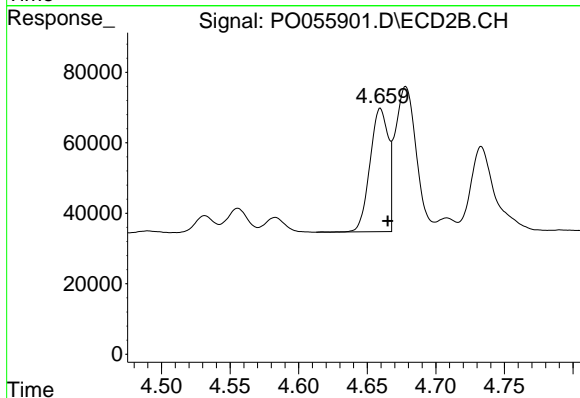
#3 AR-1016-1

R.T.: 5.435 min  
 Delta R.T.: -0.005 min  
 Response: 368567  
 Conc: 259.35 ng/ml

Instrument :  
 ECD\_O  
 ClientSampleId :  
 PB119481BSD

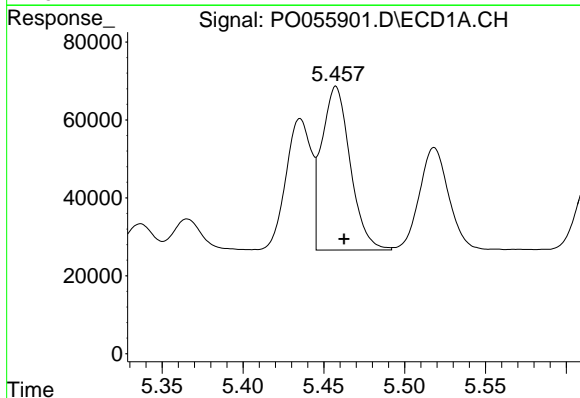
Manual Integrations  
 APPROVED

Ankita  
 5/7/2019 1:15:38 PM



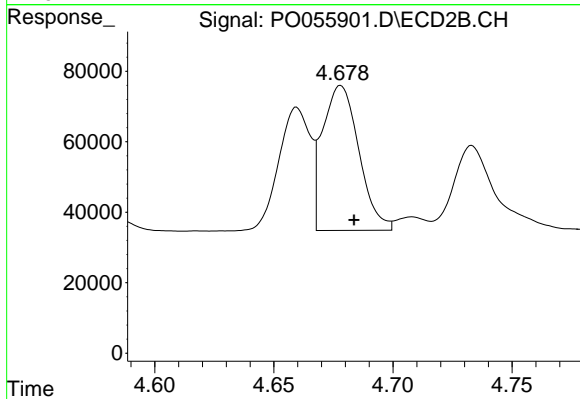
#3 AR-1016-1

R.T.: 4.660 min  
 Delta R.T.: -0.005 min  
 Response: 323985  
 Conc: 241.08 ng/ml



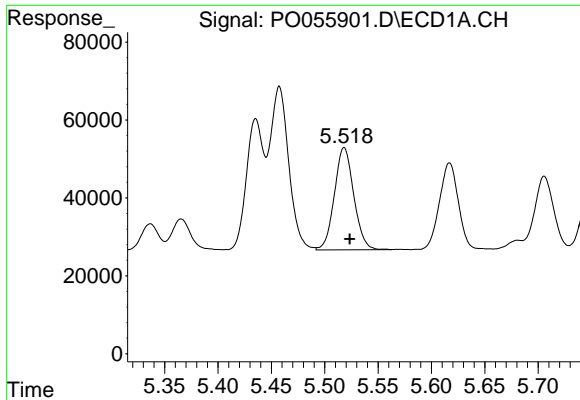
#4 AR-1016-2

R.T.: 5.457 min  
 Delta R.T.: -0.005 min  
 Response: 514919  
 Conc: 260.21 ng/ml



#4 AR-1016-2

R.T.: 4.678 min  
 Delta R.T.: -0.006 min  
 Response: 437149  
 Conc: 239.41 ng/ml

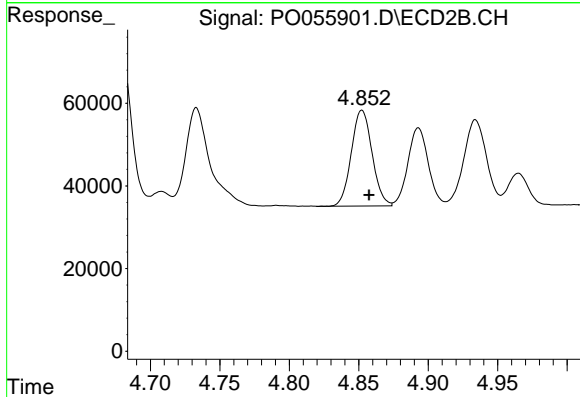


#5 AR-1016-3

R.T.: 5.518 min  
 Delta R.T.: -0.005 min  
 Response: 331665  
 Conc: 258.76 ng/ml

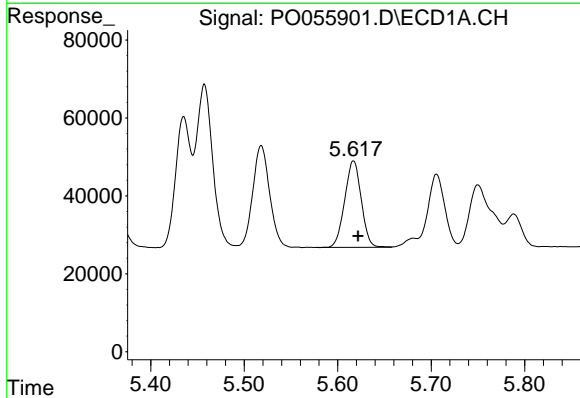
**Instrument :**  
 ECD\_O  
**ClientSampled :**  
 PB119481BSD

**Manual Integrations**  
**APPROVED**  
 Ankita  
 5/7/2019 1:15:38 PM



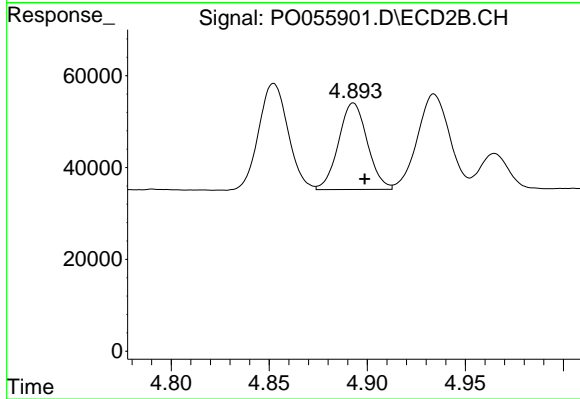
#5 AR-1016-3

R.T.: 4.852 min  
 Delta R.T.: -0.005 min  
 Response: 241668  
 Conc: 241.16 ng/ml



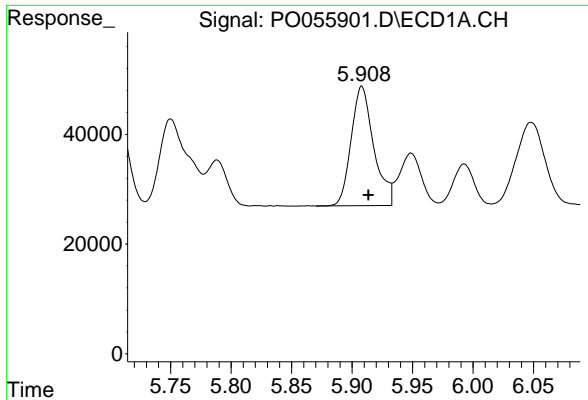
#6 AR-1016-4

R.T.: 5.617 min  
 Delta R.T.: -0.005 min  
 Response: 273121  
 Conc: 261.30 ng/ml



#6 AR-1016-4

R.T.: 4.893 min  
 Delta R.T.: -0.006 min  
 Response: 192763  
 Conc: 236.92 ng/ml

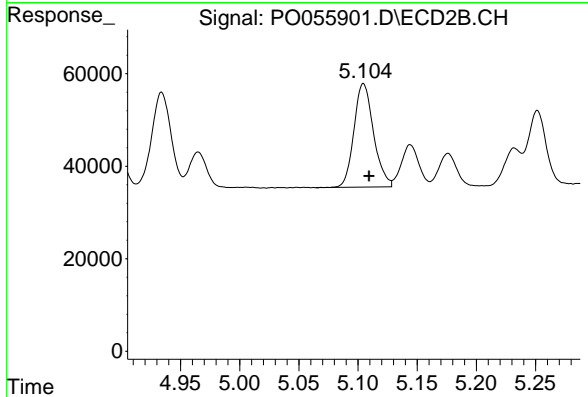


#7 AR-1016-5

R.T.: 5.908 min  
 Delta R.T.: -0.005 min  
 Response: 282769  
 Conc: 251.01 ng/ml

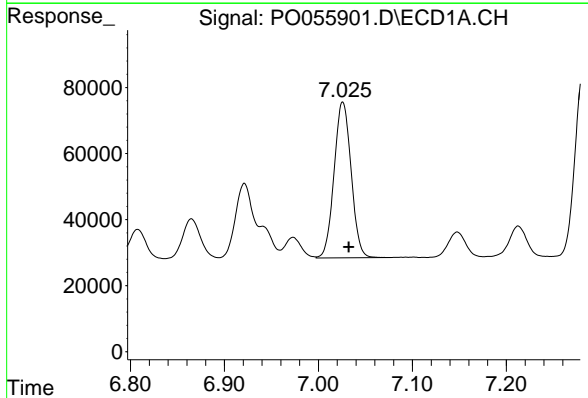
**Instrument :**  
 ECD\_O  
**ClientSampleId :**  
 PB119481BSD

**Manual Integrations**  
**APPROVED**  
 Ankita  
 5/7/2019 1:15:38 PM



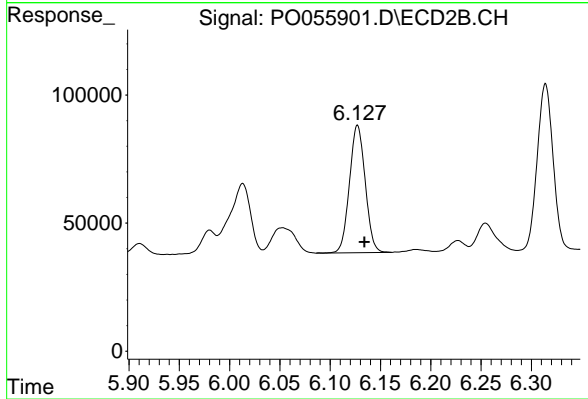
#7 AR-1016-5

R.T.: 5.105 min  
 Delta R.T.: -0.005 min  
 Response: 257672  
 Conc: 234.06 ng/ml



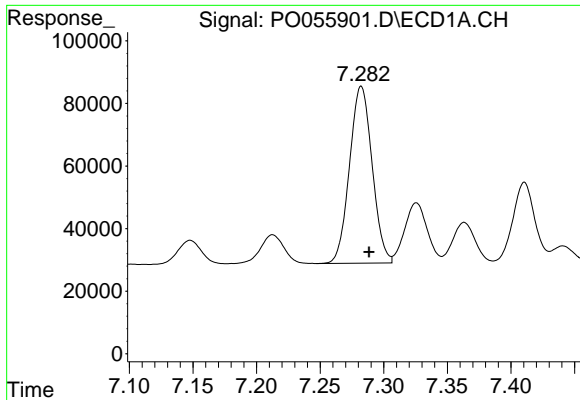
#31 AR-1260-1

R.T.: 7.026 min  
 Delta R.T.: -0.006 min  
 Response: 594511  
 Conc: 275.30 ng/ml



#31 AR-1260-1

R.T.: 6.127 min  
 Delta R.T.: -0.007 min  
 Response: 541305  
 Conc: 245.69 ng/ml

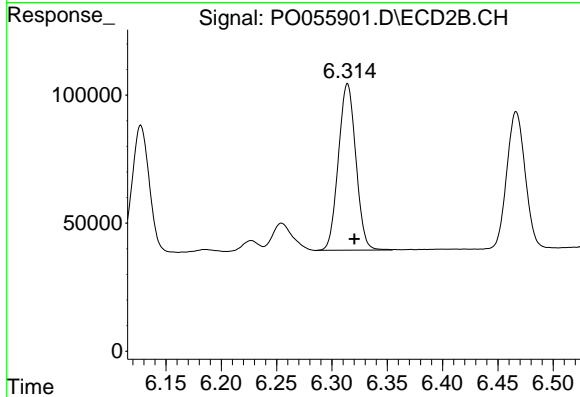


#32 AR-1260-2

R.T.: 7.282 min  
 Delta R.T.: -0.006 min  
 Response: 699529  
 Conc: 267.11 ng/ml

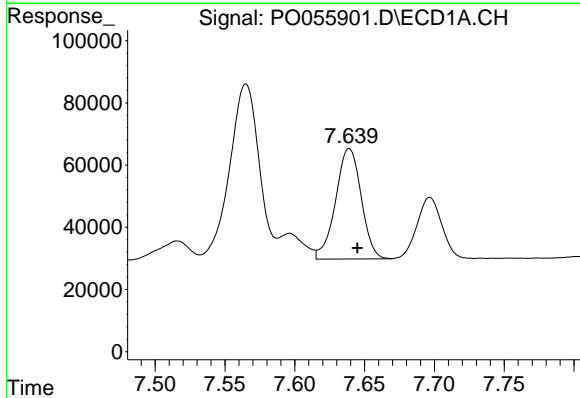
**Instrument :**  
 ECD\_O  
**ClientSampled :**  
 PB119481BSD

**Manual Integrations**  
**APPROVED**  
 Ankita  
 5/7/2019 1:15:38 PM



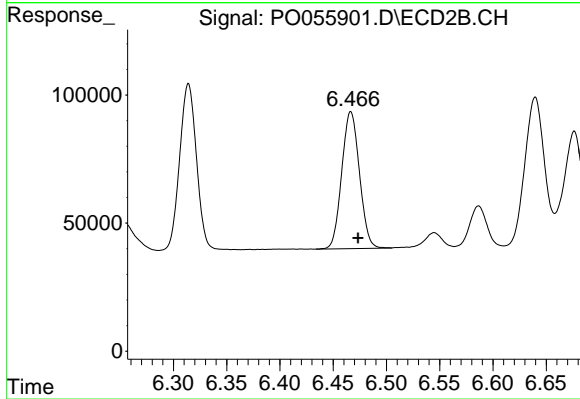
#32 AR-1260-2

R.T.: 6.314 min  
 Delta R.T.: -0.007 min  
 Response: 714212  
 Conc: 233.89 ng/ml m



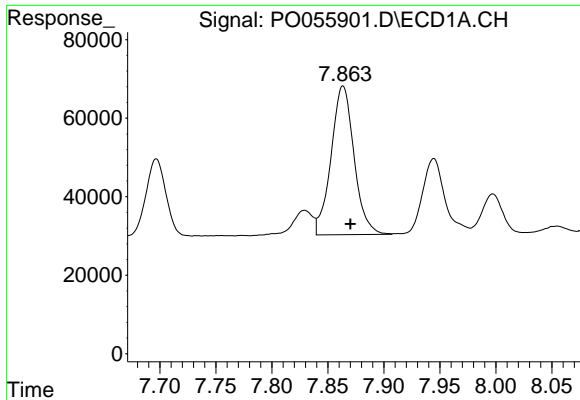
#33 AR-1260-3

R.T.: 7.639 min  
 Delta R.T.: -0.006 min  
 Response: 453921  
 Conc: 226.96 ng/ml



#33 AR-1260-3

R.T.: 6.466 min  
 Delta R.T.: -0.007 min  
 Response: 619359  
 Conc: 248.54 ng/ml m

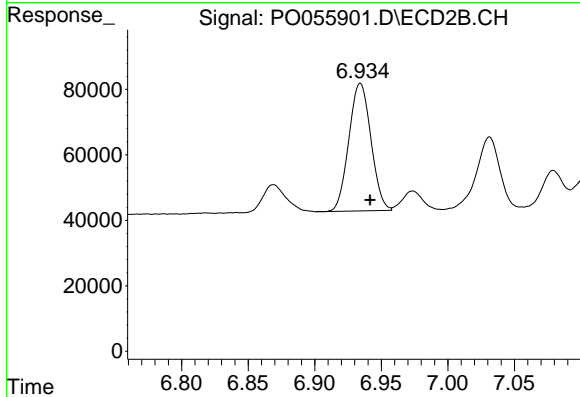


#34 AR-1260-4

R.T.: 7.863 min  
 Delta R.T.: -0.007 min  
 Response: 541941  
 Conc: 234.34 ng/ml

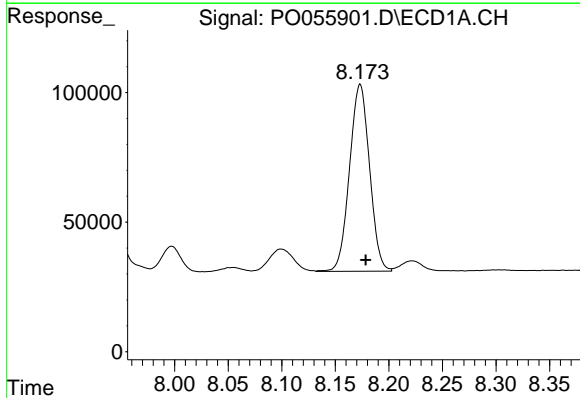
**Instrument :**  
 ECD\_O  
**ClientSampled :**  
 PB119481BSD

**Manual Integrations**  
**APPROVED**  
 Ankita  
 5/7/2019 1:15:38 PM



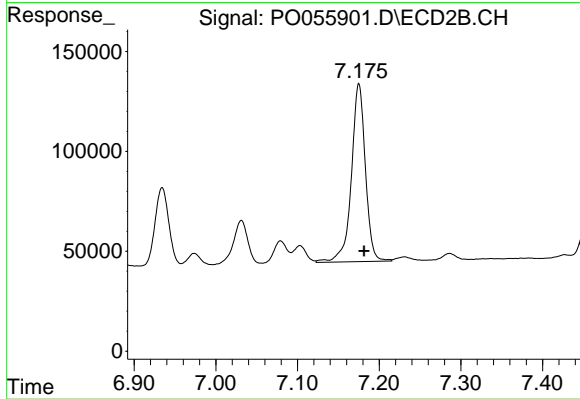
#34 AR-1260-4

R.T.: 6.934 min  
 Delta R.T.: -0.007 min  
 Response: 450857  
 Conc: 218.49 ng/ml



#35 AR-1260-5

R.T.: 8.173 min  
 Delta R.T.: -0.005 min  
 Response: 938327  
 Conc: 221.18 ng/ml



#35 AR-1260-5

R.T.: 7.175 min  
 Delta R.T.: -0.006 min  
 Response: 1062730  
 Conc: 211.60 ng/ml