

Data Path : Z:\pestpcbsrv\HPCHEM1\ECD_0\Data\P0050619\
 Data File : P0055908.D
 Signal(s) : Signal #1: ECD1A.CH Signal #2: ECD2B.CH
 Acq On : 07 May 2019 1:04
 Operator : SM/SJ
 Sample : K2672-02MS
 Misc :
 ALS Vial : 7 Sample Multiplier: 1

Instrument :
 ECD_0
 ClientSampleId :
 SB-01-COMPMS

Manual Integrations
 APPROVED

Ankita
 5/7/2019 1:15:49 PM

Integration File signal 1: autoint1.e
 Integration File signal 2: autoint2.e
 Quant Time: May 07 02:36:47 2019
 Quant Method : Z:\pestpcbsrv\HPCHEM1\ECD_0\methods\P0050319.M
 Quant Title : GC EXTRACTABLES
 QLast Update : Fri May 03 15:20:04 2019
 Response via : Initial Calibration
 Integrator: ChemStation 6890 Scale Mode: Small noise peaks clipped

Volume Inj. : 2 µl
 Signal #1 Phase : ZB-MR2 Signal #2 Phase: ZB-MR2
 Signal #1 Info : 30Mx0.32mmx 0.50µ Signal #2 Info : 30M x 0.32mm x 0.25µm

Compound	RT#1	RT#2	Resp#1	Resp#2	ng/ml	ng/ml

System Monitoring Compounds						
1) SA Tetrachlo...	4.273	3.588	750796	678977	25.089	24.040
2) SA Decachlor...	9.868	8.536	719369	488949	19.226	18.080
Target Compounds						
3) L1 AR-1016-1	5.435	4.659	351632	322717	247.434	240.133
4) L1 AR-1016-2	5.457	4.678	529503	461348	267.578	252.662
5) L1 AR-1016-3	5.518	4.852	326196	343296	254.495	342.567 #
6) L1 AR-1016-4	5.614	4.892	254506	219953	243.493	270.334
7) L1 AR-1016-5	5.909	5.104	348339	321827	309.217	292.342
31) L7 AR-1260-1	7.026	6.127	651233	609679	301.567	276.726
32) L7 AR-1260-2	7.279	6.313	2408003	661899	919.476	216.762m#
33) L7 AR-1260-3	7.639	6.465	421874	556959	210.938	223.496m
34) L7 AR-1260-4	7.862	6.934	558586	342901	241.540	166.177 #
35) L7 AR-1260-5	8.172	7.175	851977	837502	200.828	166.758

(f)=RT Delta > 1/2 Window (#)=Amounts differ by > 25% (m)=manual int.

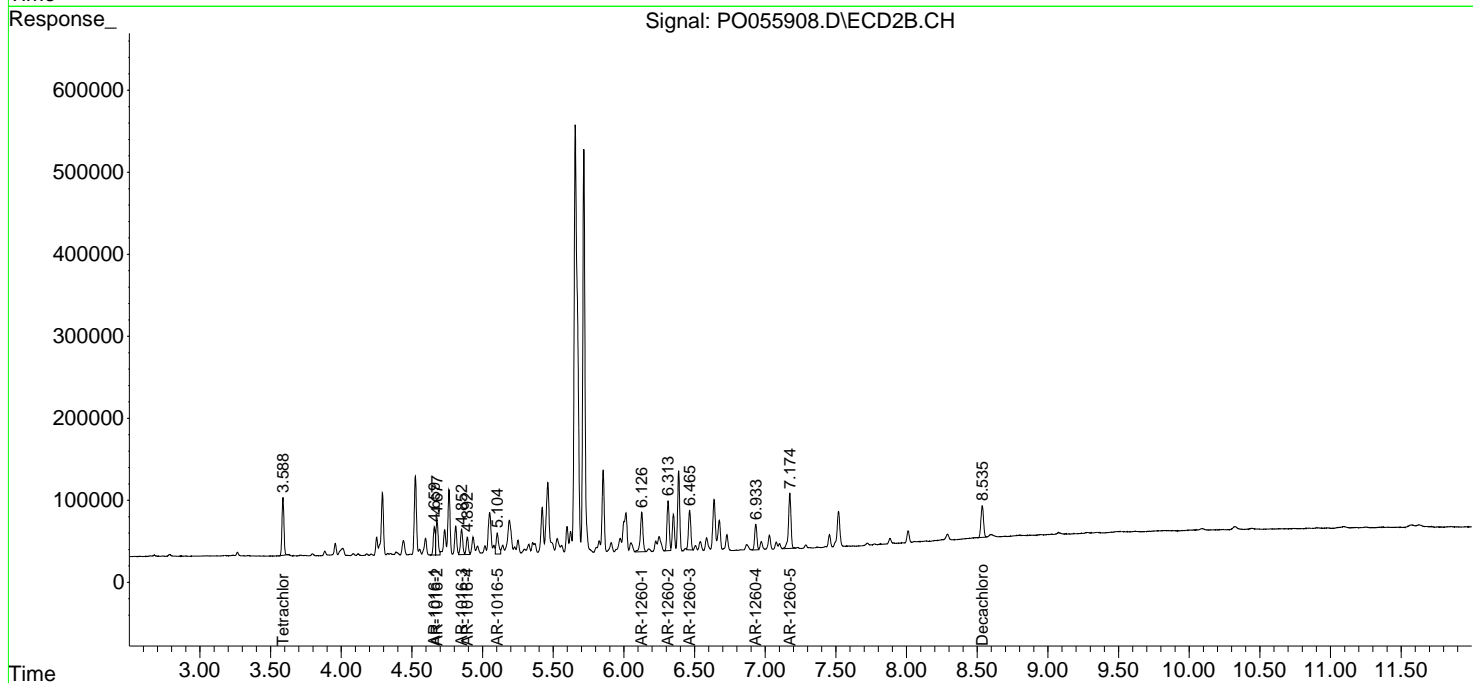
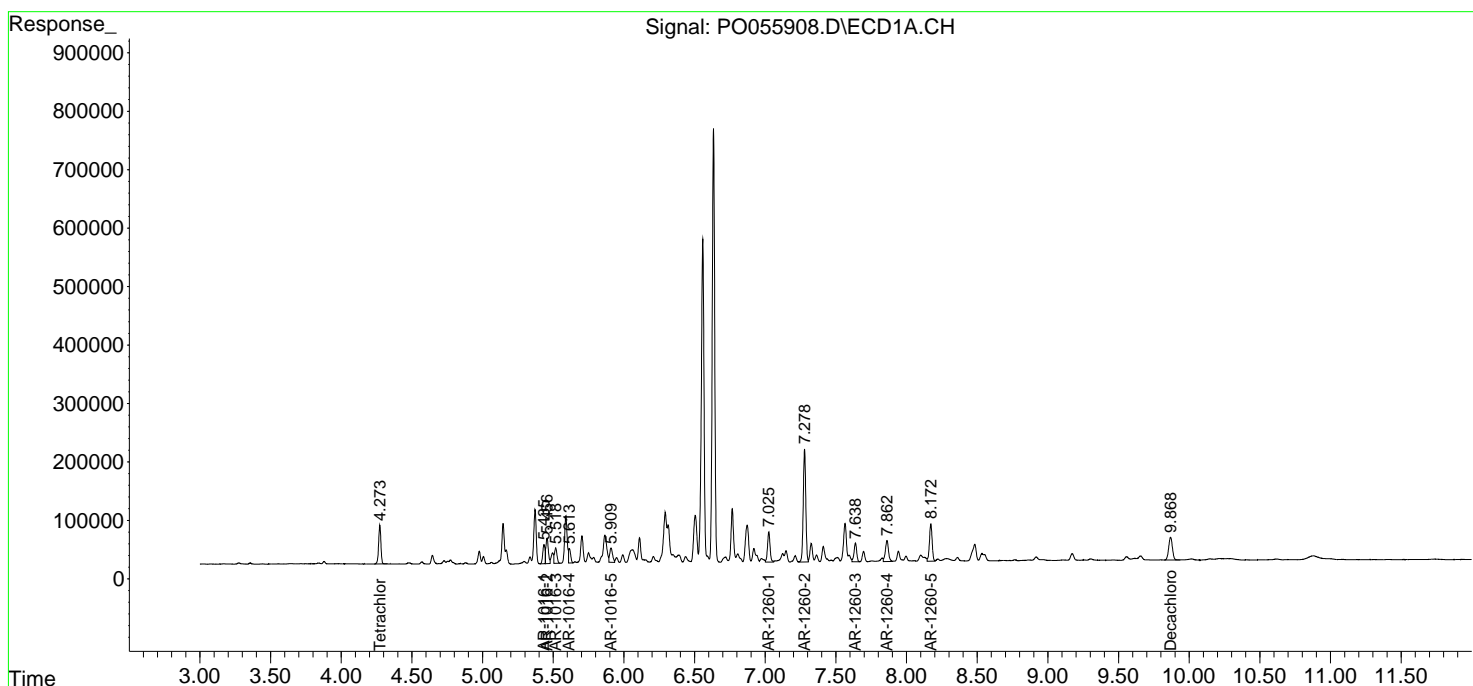
Data Path : Z:\pestpcbsrv\HPCHEM1\ECD_0\Data\P0050619\
 Data File : P0055908.D
 Signal(s) : Signal #1: ECD1A.CH Signal #2: ECD2B.CH
 Acq On : 07 May 2019 1:04
 Operator : SM/SJ
 Sample : K2672-02MS
 Misc :
 ALS Vial : 7 Sample Multiplier: 1

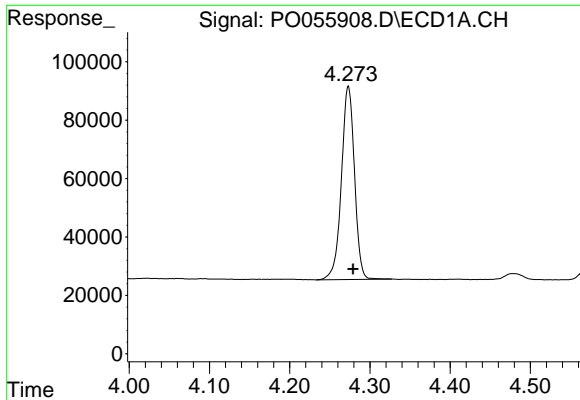
Instrument :
 ECD_O
Client Sampled :
 SB-01-COMPMS

Manual Integrations
APPROVED
 Ankita
 5/7/2019 1:15:49 PM

Integration File signal 1: autoint1.e
 Integration File signal 2: autoint2.e
 Quant Time: May 07 02:36:47 2019
 Quant Method : Z:\pestpcbsrv\HPCHEM1\ECD_0\methods\P0050319.M
 Quant Title : GC EXTRACTABLES
 QLast Update : Fri May 03 15:20:04 2019
 Response via : Initial Calibration
 Integrator: ChemStation 6890 Scale Mode: Small noise peaks clipped

Volume Inj. : 2 µl
 Signal #1 Phase : ZB-MR1 Signal #2 Phase: ZB-MR2
 Signal #1 Info : 30Mx0.32mmx 0.50µ Signal #2 Info : 30M x 0.32mm x 0.25µm

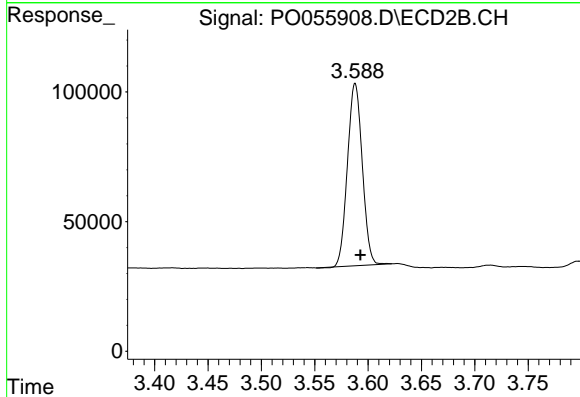




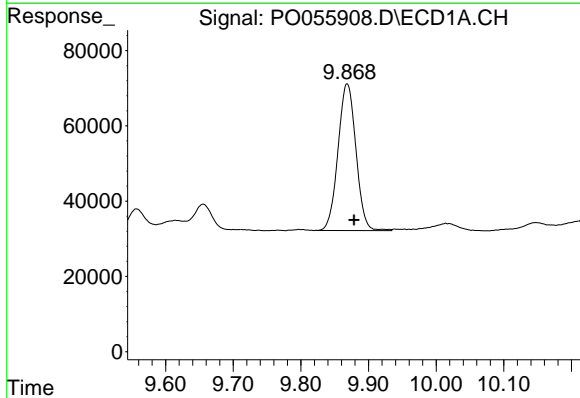
#1 Tetrachloro-m-xylene
 R.T.: 4.273 min
 Delta R.T.: -0.006 min
 Response: 750796
 Conc: 25.09 ng/ml

Instrument :
 ECD_O
ClientSampled :
 SB-01-COMPMS

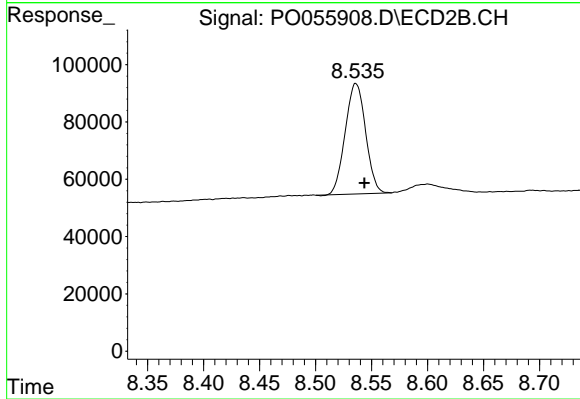
Manual Integrations
APPROVED
 Ankita
 5/7/2019 1:15:49 PM



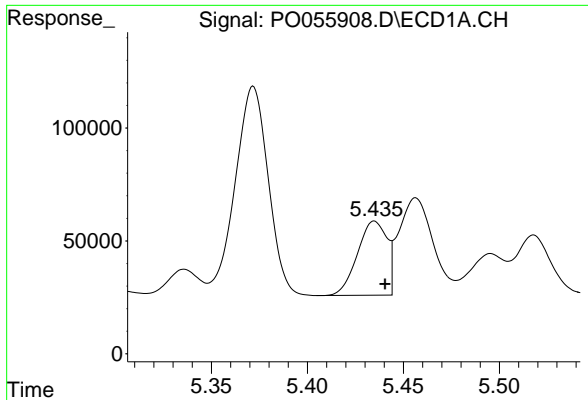
#1 Tetrachloro-m-xylene
 R.T.: 3.588 min
 Delta R.T.: -0.005 min
 Response: 678977
 Conc: 24.04 ng/ml



#2 Decachlorobiphenyl
 R.T.: 9.868 min
 Delta R.T.: -0.011 min
 Response: 719369
 Conc: 19.23 ng/ml



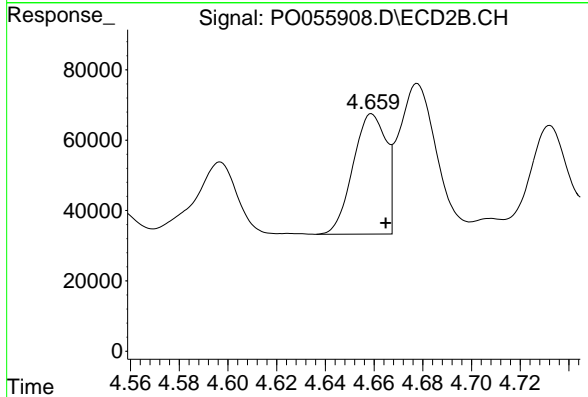
#2 Decachlorobiphenyl
 R.T.: 8.536 min
 Delta R.T.: -0.008 min
 Response: 488949
 Conc: 18.08 ng/ml



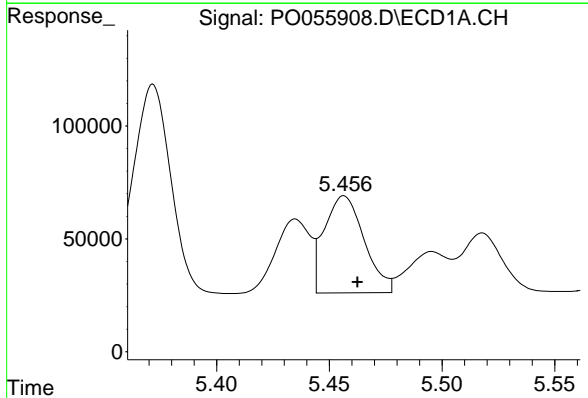
#3 AR-1016-1
 R.T.: 5.435 min
 Delta R.T.: -0.006 min
 Response: 351632
 Conc: 247.43 ng/ml

Instrument :
 ECD_O
ClientSampled :
 SB-01-COMPMS

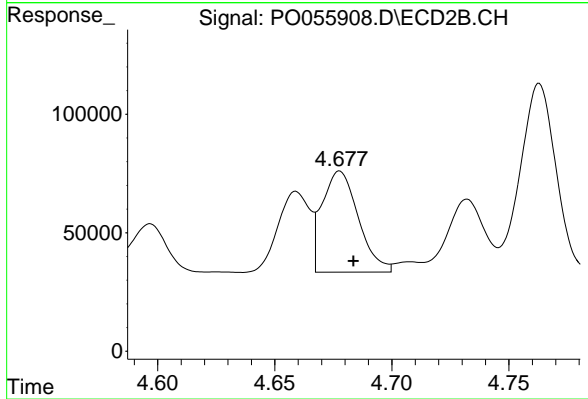
Manual Integrations
APPROVED
 Ankita
 5/7/2019 1:15:49 PM



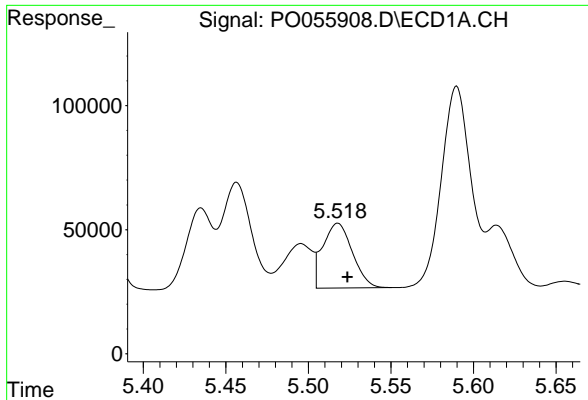
#3 AR-1016-1
 R.T.: 4.659 min
 Delta R.T.: -0.006 min
 Response: 322717
 Conc: 240.13 ng/ml



#4 AR-1016-2
 R.T.: 5.457 min
 Delta R.T.: -0.006 min
 Response: 529503
 Conc: 267.58 ng/ml



#4 AR-1016-2
 R.T.: 4.678 min
 Delta R.T.: -0.006 min
 Response: 461348
 Conc: 252.66 ng/ml

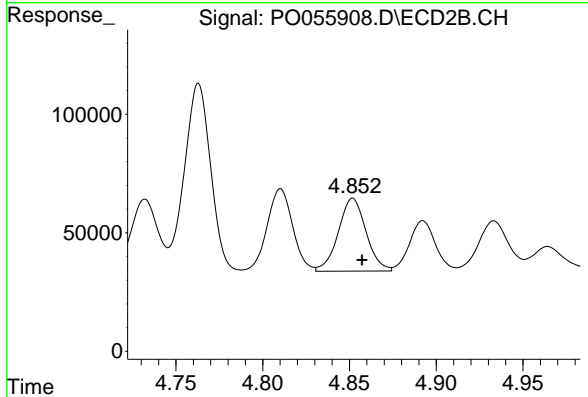


#5 AR-1016-3

R.T.: 5.518 min
 Delta R.T.: -0.006 min
 Response: 326196
 Conc: 254.49 ng/ml

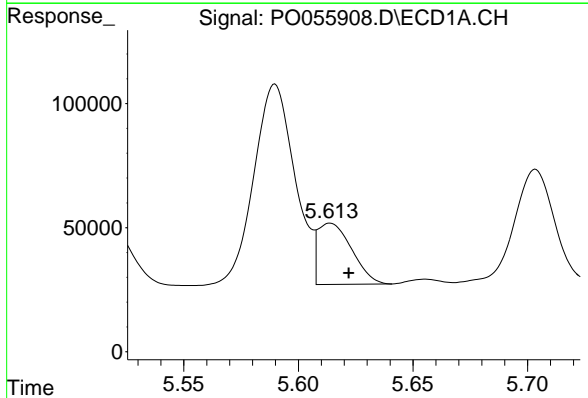
Instrument :
 ECD_O
ClientSampled :
 SB-01-COMPMS

Manual Integrations
APPROVED
 Ankita
 5/7/2019 1:15:49 PM



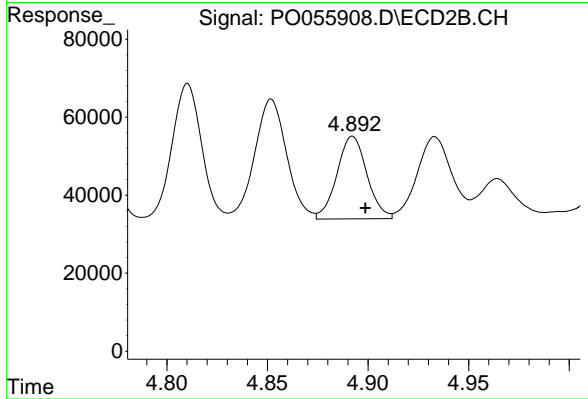
#5 AR-1016-3

R.T.: 4.852 min
 Delta R.T.: -0.005 min
 Response: 343296
 Conc: 342.57 ng/ml



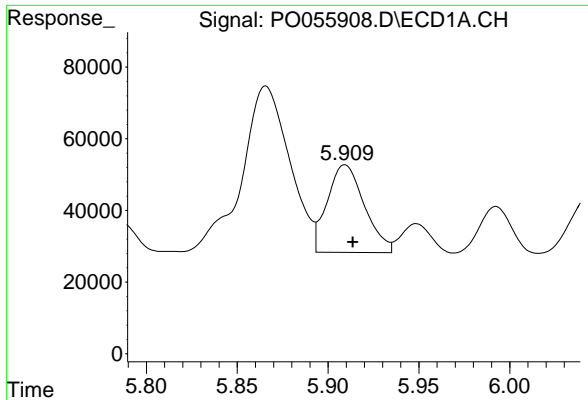
#6 AR-1016-4

R.T.: 5.614 min
 Delta R.T.: -0.008 min
 Response: 254506
 Conc: 243.49 ng/ml



#6 AR-1016-4

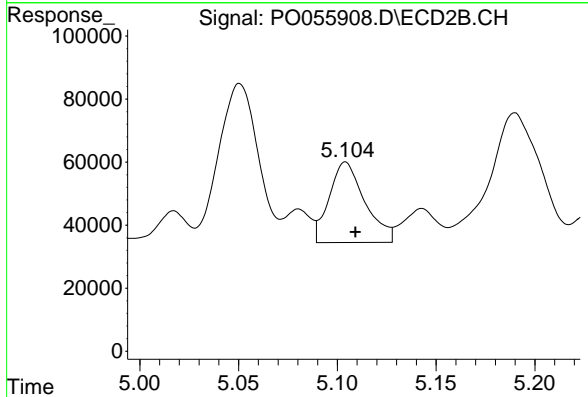
R.T.: 4.892 min
 Delta R.T.: -0.006 min
 Response: 219953
 Conc: 270.33 ng/ml



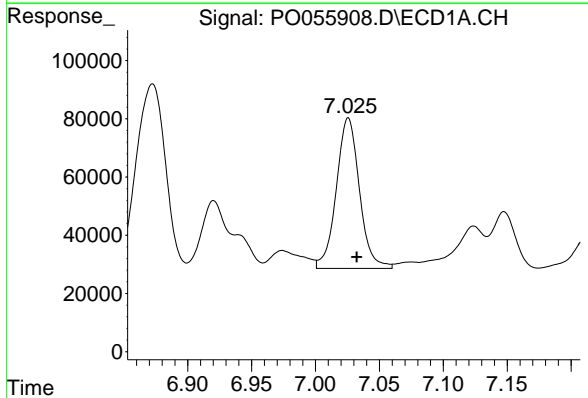
#7 AR-1016-5
 R.T.: 5.909 min
 Delta R.T.: -0.004 min
 Response: 348339
 Conc: 309.22 ng/ml

Instrument :
 ECD_O
ClientSampled :
 SB-01-COMPMS

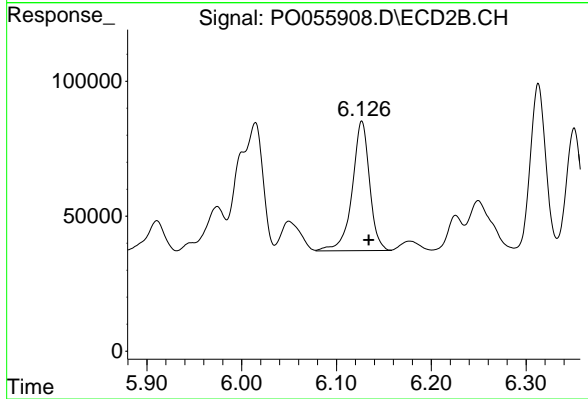
Manual Integrations
APPROVED
 Ankita
 5/7/2019 1:15:49 PM



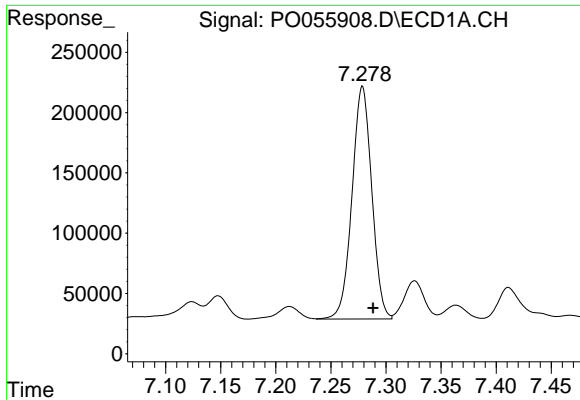
#7 AR-1016-5
 R.T.: 5.104 min
 Delta R.T.: -0.005 min
 Response: 321827
 Conc: 292.34 ng/ml



#31 AR-1260-1
 R.T.: 7.026 min
 Delta R.T.: -0.007 min
 Response: 651233
 Conc: 301.57 ng/ml



#31 AR-1260-1
 R.T.: 6.127 min
 Delta R.T.: -0.007 min
 Response: 609679
 Conc: 276.73 ng/ml

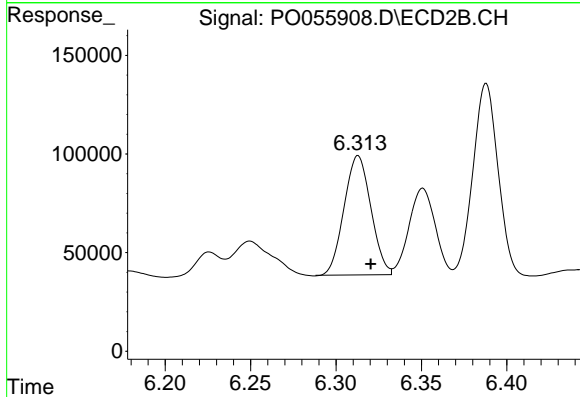


#32 AR-1260-2

R.T.: 7.279 min
 Delta R.T.: -0.010 min
 Response: 2408003
 Conc: 919.48 ng/ml

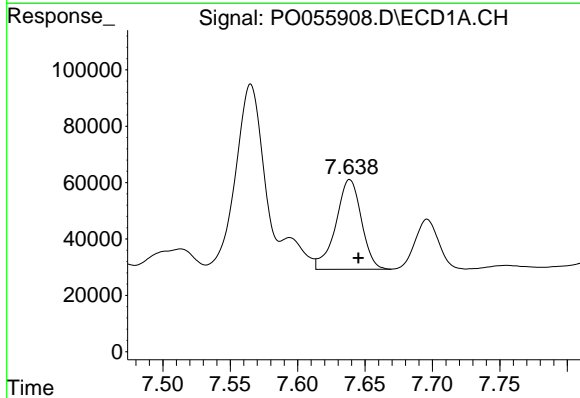
Instrument :
 ECD_O
ClientSampled :
 SB-01-COMPMS

Manual Integrations
APPROVED
 Ankita
 5/7/2019 1:15:49 PM



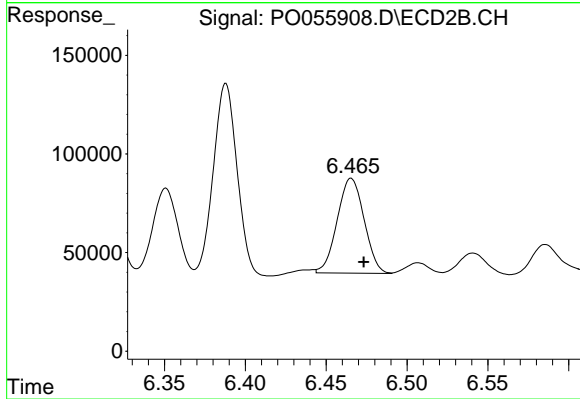
#32 AR-1260-2

R.T.: 6.313 min
 Delta R.T.: -0.008 min
 Response: 661899
 Conc: 216.76 ng/ml m



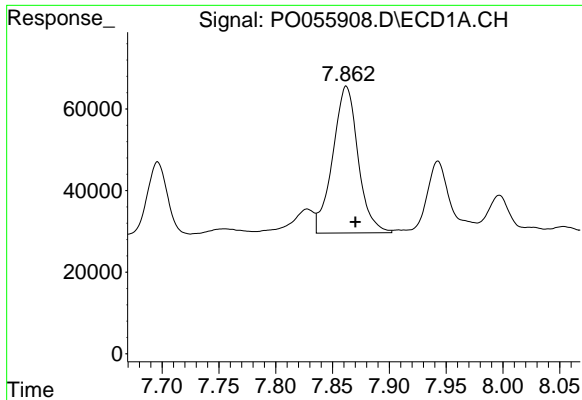
#33 AR-1260-3

R.T.: 7.639 min
 Delta R.T.: -0.006 min
 Response: 421874
 Conc: 210.94 ng/ml



#33 AR-1260-3

R.T.: 6.465 min
 Delta R.T.: -0.008 min
 Response: 556959
 Conc: 223.50 ng/ml m

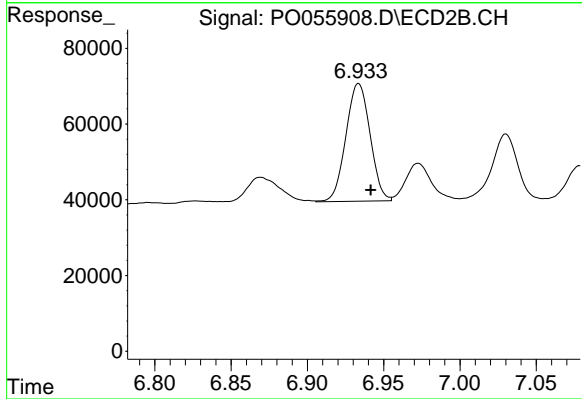


#34 AR-1260-4

R.T.: 7.862 min
 Delta R.T.: -0.008 min
 Response: 558586
 Conc: 241.54 ng/ml

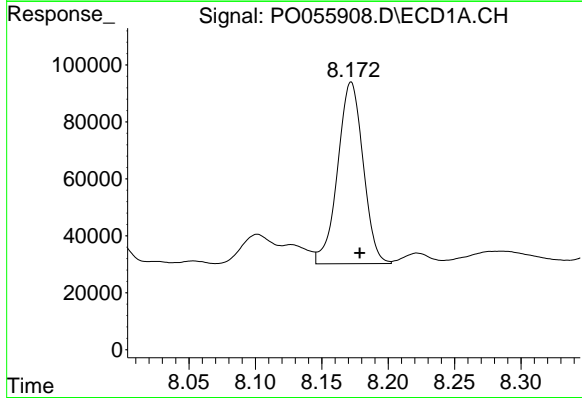
Instrument :
 ECD_O
 ClientSampleId :
 SB-01-COMPMS

Manual Integrations
APPROVED
 Ankita
 5/7/2019 1:15:49 PM



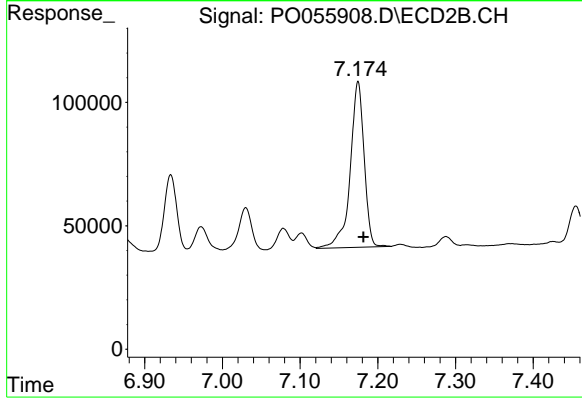
#34 AR-1260-4

R.T.: 6.934 min
 Delta R.T.: -0.008 min
 Response: 342901
 Conc: 166.18 ng/ml



#35 AR-1260-5

R.T.: 8.172 min
 Delta R.T.: -0.006 min
 Response: 851977
 Conc: 200.83 ng/ml



#35 AR-1260-5

R.T.: 7.175 min
 Delta R.T.: -0.007 min
 Response: 837502
 Conc: 166.76 ng/ml