

Data Path : Z:\pestpcbsrv\HPCHEM1\ECD\_O\Data\P0050724\  
 Data File : P0103446.D  
 Signal(s) : Signal #1: ECD1A.ch Signal #2: ECD2B.ch  
 Acq On : 07 May 2024 22:20  
 Operator : YP/AJ  
 Sample : P2389-05  
 Misc :  
 ALS Vial : 30 Sample Multiplier: 1

Instrument :  
 ECD\_O  
 ClientSampleId :  
 1260

Integration File signal 1: autoint1.e  
 Integration File signal 2: autoint2.e  
 Quant Time: May 08 01:27:47 2024  
 Quant Method : Z:\pestpcbsrv\HPCHEM1\ECD\_O\methods\P0050624.M  
 Quant Title : GC EXTRACTABLES  
 QLast Update : Tue May 07 04:55:35 2024  
 Response via : Initial Calibration  
 Integrator: ChemStation

Volume Inj. : 2 µl  
 Signal #1 Phase : ZB-MR1 Signal #2 Phase: ZB-MR2  
 Signal #1 Info : 30Mx0.32mmx 0.50µ Signal #2 Info : 30M x 0.32mm x 0.25µm

Compound	RT#1	RT#2	Resp#1	Resp#2	ng/ml	ng/ml
-----						
System Monitoring Compounds						
1) SA Tetrachlo...	4.452	3.590	140.4E6	55743468	18.242	22.128
2) SA Decachlor...	10.207	8.557	42459017	11553546	8.957	8.881
Target Compounds						
3) L1 AR-1016-1	5.627	4.685	33476754	9342087	137.678	119.056
4) L1 AR-1016-2	5.650	4.685	43866356	9342087	126.644	77.997 #
5) L1 AR-1016-3	5.688	4.871	66498985	7552080	320.703	113.004 #
6) L1 AR-1016-4	5.802	4.916	52320427	11793037	306.901	256.627
7) L1 AR-1016-5	6.105	5.129	34420330	37062101	217.285	593.584 #
8) L2 AR-1221-1	4.660	3.823	15973413	1433886	179.958	46.561 #
9) L2 AR-1221-2	4.764	3.861	4539997	12556473	67.448	516.256 #
10) L2 AR-1221-3	4.808	3.974	40154955	2124465	199.915	29.642 #
11) L3 AR-1232-1	4.808	3.974	40154955	2124465	241.813	35.670 #
12) L3 AR-1232-2	5.334	4.685	78111168	9342087	914.942	162.982 #
13) L3 AR-1232-3	5.650	4.871	43866356	7552080	267.738	243.889
14) L3 AR-1232-4	5.802	4.951	52320427	6442664	663.269	250.831 #
15) L3 AR-1232-5	5.891	5.129	183.3E6	37062101	3242.004	1333.629 #
16) L4 AR-1242-1	5.627	4.685	33476754	9342087	163.599	141.314
17) L4 AR-1242-2	5.650	4.685	43866356	9342087	150.587	93.851 #
18) L4 AR-1242-3	5.688	4.871	66498985	7552080	383.645	137.985 #
19) L4 AR-1242-4	5.802	4.951	52320427	6442664	364.246	129.697 #
20) L4 AR-1242-5	6.510	5.442	164.0E6	9331403	1145.008	152.639 #
21) L5 AR-1248-1	5.627	4.685	33476754	9342087	218.142	185.146
22) L5 AR-1248-2	5.891	4.916	183.3E6	11793037	891.155	179.020 #
23) L5 AR-1248-3	6.105	4.951	34420330	6442664	152.837	89.001 #
24) L5 AR-1248-4	6.510	5.129	164.0E6	37062101	637.108	438.520 #
25) L5 AR-1248-5	6.510	5.485	164.0E6	15829942	672.934	180.276 #
26) L6 AR-1254-1	6.443	5.485	37477323	15829942	152.189	129.877
27) L6 AR-1254-2	6.699	5.599	50870513	4547306	140.548	43.061 #
28) L6 AR-1254-3	7.056	6.005	38107013	3984432	104.676	23.183 #
29) L6 AR-1254-4	7.328	6.220	27759447	9255044	97.933	89.806
30) L6 AR-1254-5	7.781	6.631	15754727	8434546	59.119	61.129
31) L7 AR-1260-1	7.210	6.151	23338065	4900087	89.242	46.375 #
32) L7 AR-1260-2	7.485	6.313	45605464	20336844	140.056	162.478
33) L7 AR-1260-3	7.839	6.470	14020950	19913047	56.557	168.602 #
34) L7 AR-1260-4	8.049	6.917	15931641	18540159	65.378	207.757 #
35) L7 AR-1260-5	8.392	7.152	9231658	6862670	16.999	33.129 #
36) L8 AR-1262-1	7.730	6.631	30951502	8434546	134.423	110.005
37) L8 AR-1262-2	8.392	6.917	9231658	18540159	14.221	157.329 #
38) L8 AR-1262-3	8.714	7.474	28663095	-4096613	66.861	N.D. #
39) L8 AR-1262-4	8.783	7.548	952540	1564465	2.835	9.365 #
40) L8 AR-1262-5	9.463	8.026	2847104	6485538	12.006	89.896 #
41) L9 AR-1268-1	8.714	7.474	28663095	-4096613	36.856	N.D. #

Data Path : Z:\pestpcbsrv\HPCHEM1\ECD\_0\Data\P0050724\  
 Data File : P0103446.D  
 Signal(s) : Signal #1: ECD1A.ch Signal #2: ECD2B.ch  
 Acq On : 07 May 2024 22:20  
 Operator : YP/AJ  
 Sample : P2389-05  
 Misc :  
 ALS Vial : 30 Sample Multiplier: 1

Instrument :  
 ECD\_0  
 ClientSampleId :  
 1260

Integration File signal 1: autoint1.e  
 Integration File signal 2: autoint2.e  
 Quant Time: May 08 01:27:47 2024  
 Quant Method : Z:\pestpcbsrv\HPCHEM1\ECD\_0\methods\P0050624.M  
 Quant Title : GC EXTRACTABLES  
 QLast Update : Tue May 07 04:55:35 2024  
 Response via : Initial Calibration  
 Integrator: ChemStation

Volume Inj. : 2 µl  
 Signal #1 Phase : ZB-MR1 Signal #2 Phase: ZB-MR2  
 Signal #1 Info : 30Mx0.32mmx 0.50µ Signal #2 Info : 30M x 0.32mm x 0.25µm

	Compound	RT#1	RT#2	Resp#1	Resp#2	ng/ml	ng/ml
42)	L9 AR-1268-2	8.783	7.548	952540	1564465	1.333	6.265 #
43)	L9 AR-1268-3	9.028	7.757	15605382	-11675	24.789	N.D. #
44)	L9 AR-1268-4	9.463	8.304	2847104	600596	11.229	1.108 #
45)	L9 AR-1268-5	9.865	8.557	337827	11553546	0.175	49.641 #

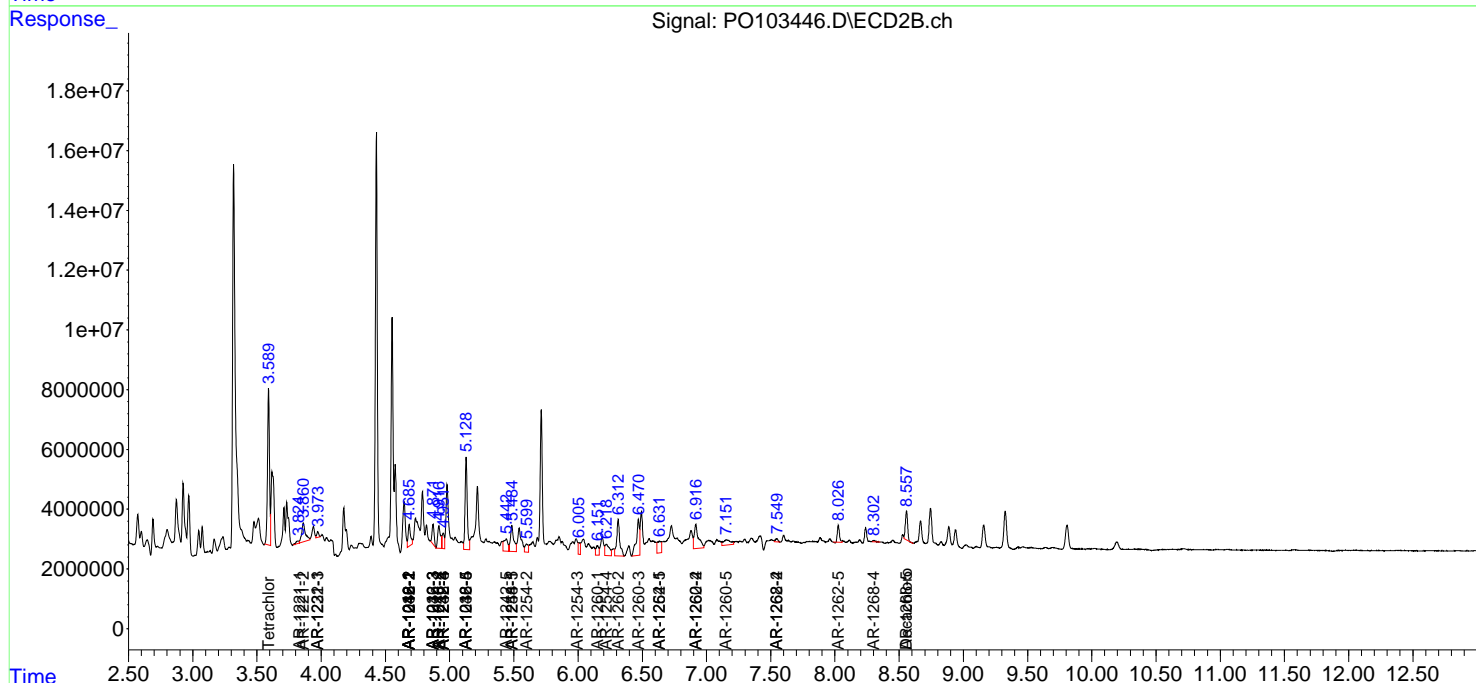
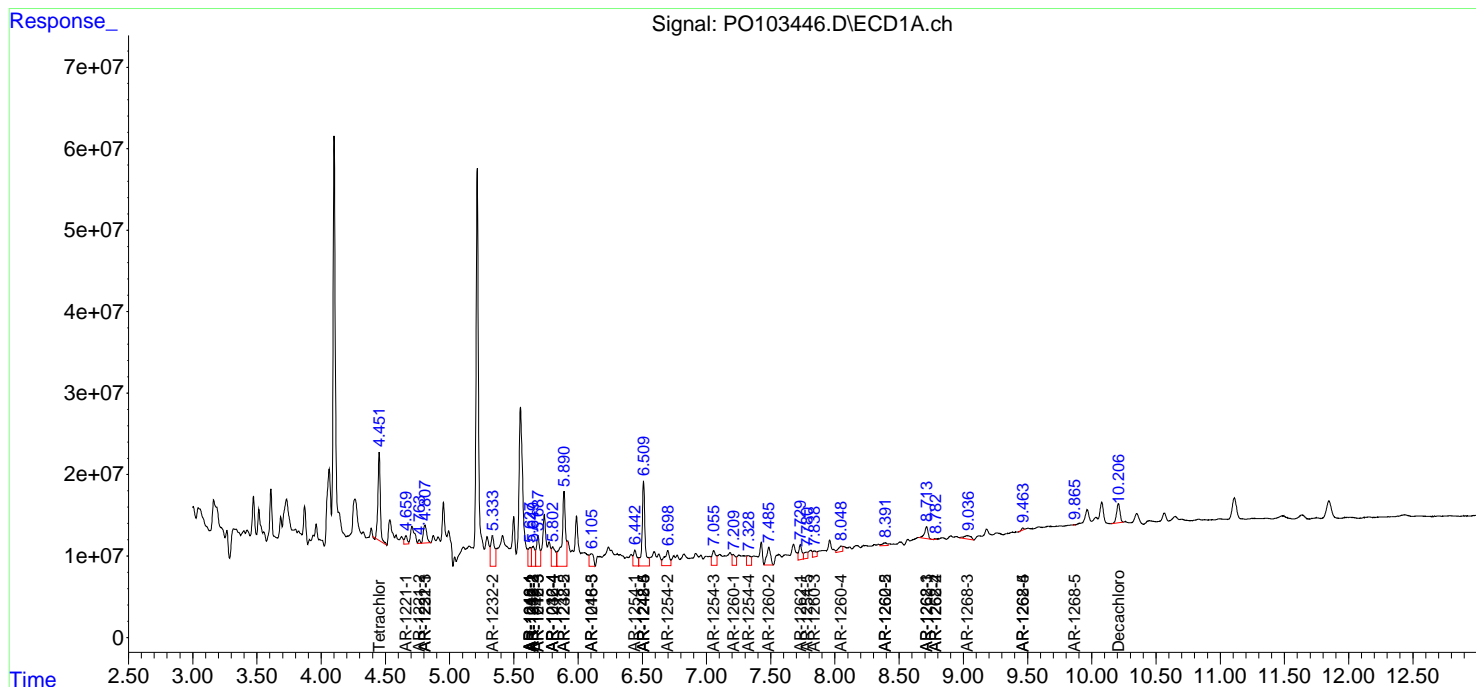
(f)=RT Delta > 1/2 Window (#)=Amounts differ by > 25% (m)=manual int.

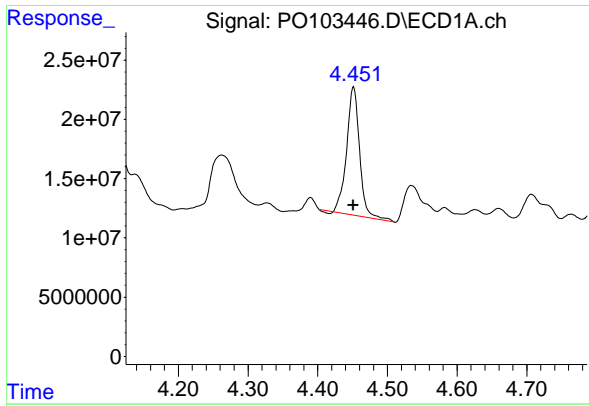
Data Path : Z:\pestpcbsrv\HPCHEM1\ECD\_O\Data\PO050724\  
 Data File : PO103446.D  
 Signal(s) : Signal #1: ECD1A.ch Signal #2: ECD2B.ch  
 Acq On : 07 May 2024 22:20  
 Operator : YP/AJ  
 Sample : P2389-05  
 Misc :  
 ALS Vial : 30 Sample Multiplier: 1

Instrument :  
 ECD\_O  
 ClientSampleId :  
 1260

Integration File signal 1: autoint1.e  
 Integration File signal 2: autoint2.e  
 Quant Time: May 08 01:27:47 2024  
 Quant Method : Z:\pestpcbsrv\HPCHEM1\ECD\_O\methods\PO050624.M  
 Quant Title : GC EXTRACTABLES  
 QLast Update : Tue May 07 04:55:35 2024  
 Response via : Initial Calibration  
 Integrator: ChemStation

Volume Inj. : 2 µl  
 Signal #1 Phase : ZB-MR1 Signal #2 Phase: ZB-MR2  
 Signal #1 Info : 30Mx0.32mmx 0.50µ Signal #2 Info : 30M x 0.32mm x 0.25µm

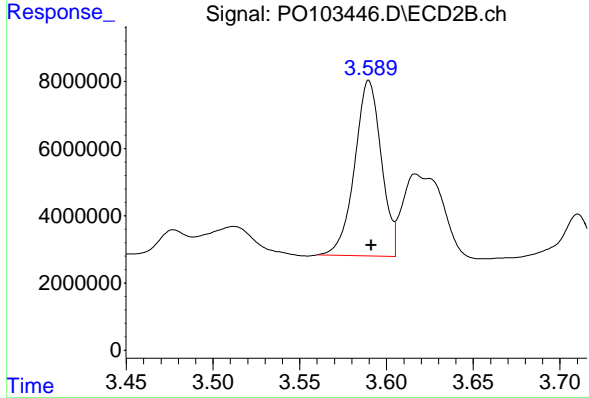




#1 Tetrachloro-m-xylene

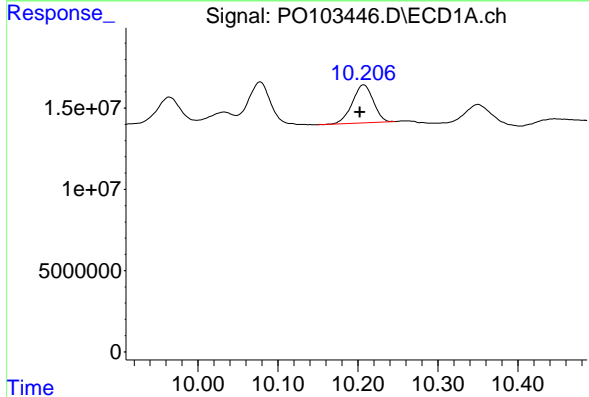
R.T.: 4.452 min  
 Delta R.T.: 0.000 min  
 Response: 140385876  
 Conc: 18.24 ng/ml

Instrument :  
 ECD\_O  
 ClientSampleId :  
 1260



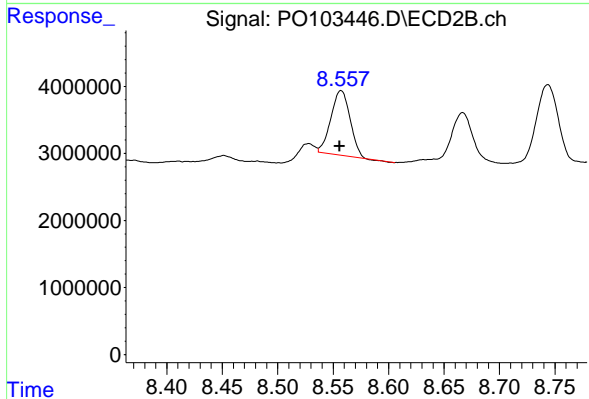
#1 Tetrachloro-m-xylene

R.T.: 3.590 min  
 Delta R.T.: -0.001 min  
 Response: 55743468  
 Conc: 22.13 ng/ml



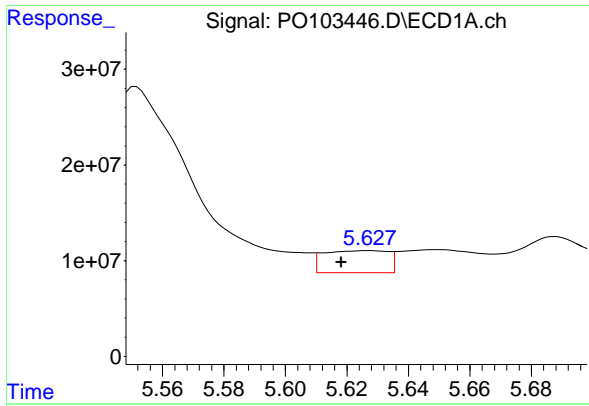
#2 Decachlorobiphenyl

R.T.: 10.207 min  
 Delta R.T.: 0.005 min  
 Response: 42459017  
 Conc: 8.96 ng/ml



#2 Decachlorobiphenyl

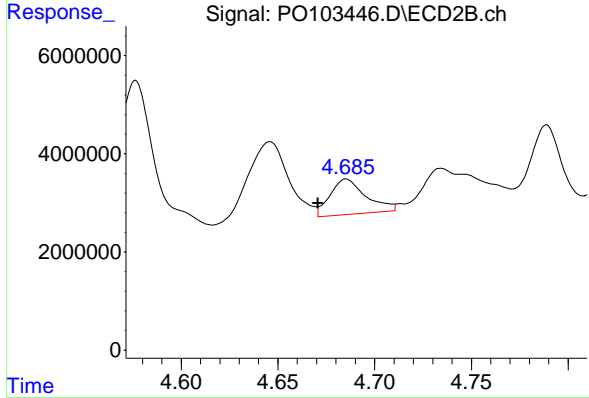
R.T.: 8.557 min  
 Delta R.T.: 0.001 min  
 Response: 11553546  
 Conc: 8.88 ng/ml



#3 AR-1016-1

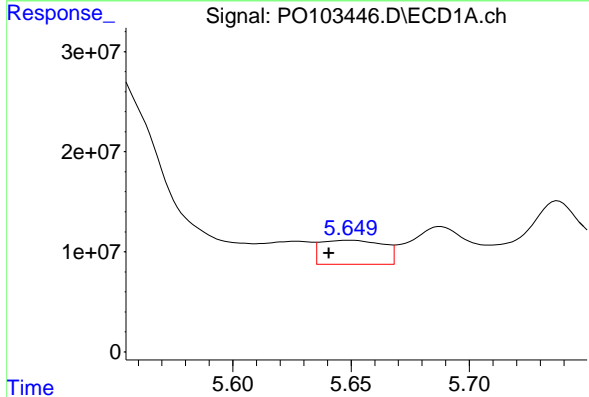
R.T.: 5.627 min  
 Delta R.T.: 0.009 min  
 Response: 33476754  
 Conc: 137.68 ng/ml

Instrument :  
 ECD\_O  
 ClientSampleId :  
 1260



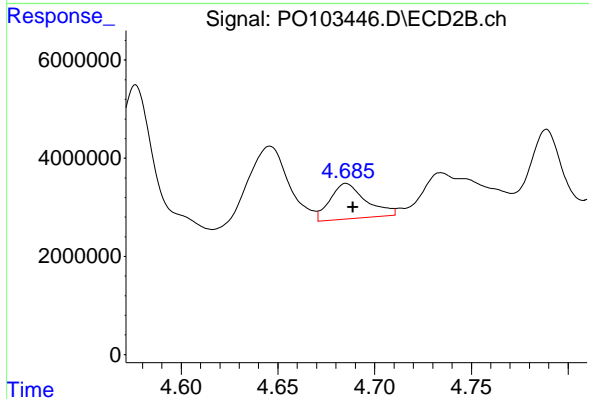
#3 AR-1016-1

R.T.: 4.685 min  
 Delta R.T.: 0.015 min  
 Response: 9342087  
 Conc: 119.06 ng/ml



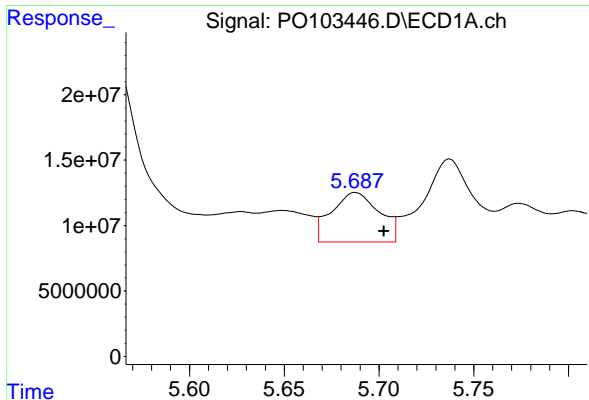
#4 AR-1016-2

R.T.: 5.650 min  
 Delta R.T.: 0.009 min  
 Response: 43866356  
 Conc: 126.64 ng/ml



#4 AR-1016-2

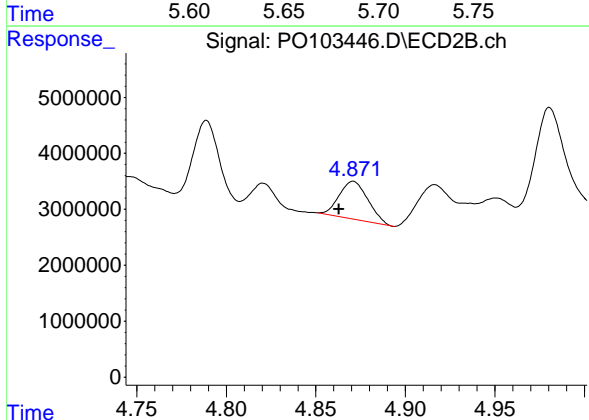
R.T.: 4.685 min  
 Delta R.T.: -0.003 min  
 Response: 9342087  
 Conc: 78.00 ng/ml



#5 AR-1016-3

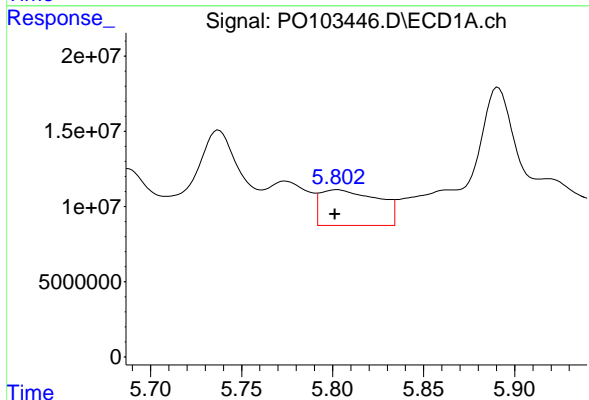
R.T.: 5.688 min  
 Delta R.T.: -0.015 min  
 Response: 66498985  
 Conc: 320.70 ng/ml

Instrument :  
 ECD\_O  
 ClientSampleId :  
 1260



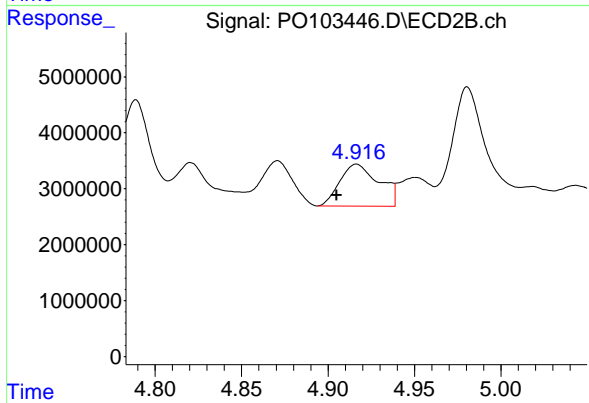
#5 AR-1016-3

R.T.: 4.871 min  
 Delta R.T.: 0.008 min  
 Response: 7552080  
 Conc: 113.00 ng/ml



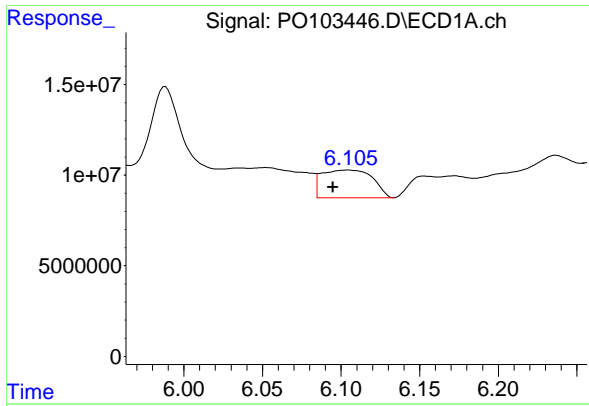
#6 AR-1016-4

R.T.: 5.802 min  
 Delta R.T.: 0.001 min  
 Response: 52320427  
 Conc: 306.90 ng/ml



#6 AR-1016-4

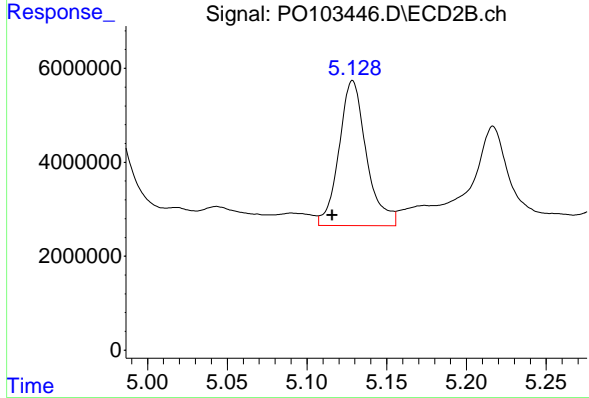
R.T.: 4.916 min  
 Delta R.T.: 0.011 min  
 Response: 11793037  
 Conc: 256.63 ng/ml



#7 AR-1016-5

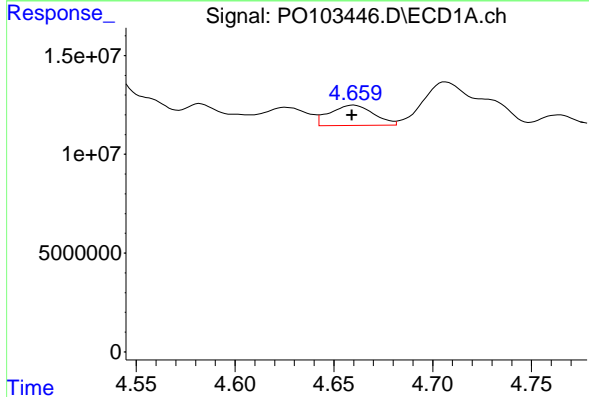
R.T.: 6.105 min  
 Delta R.T.: 0.010 min  
 Response: 34420330  
 Conc: 217.28 ng/ml

Instrument :  
 ECD\_O  
 ClientSampleId :  
 1260



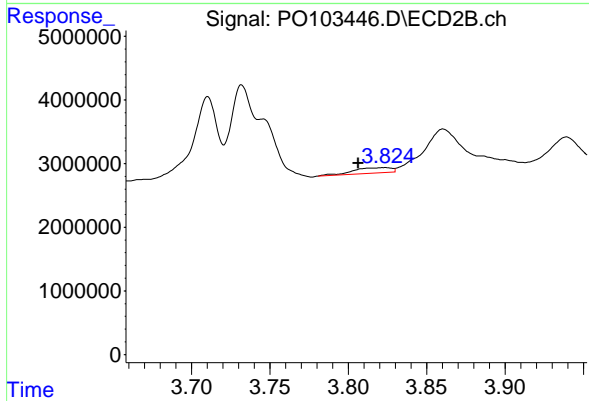
#7 AR-1016-5

R.T.: 5.129 min  
 Delta R.T.: 0.013 min  
 Response: 37062101  
 Conc: 593.58 ng/ml



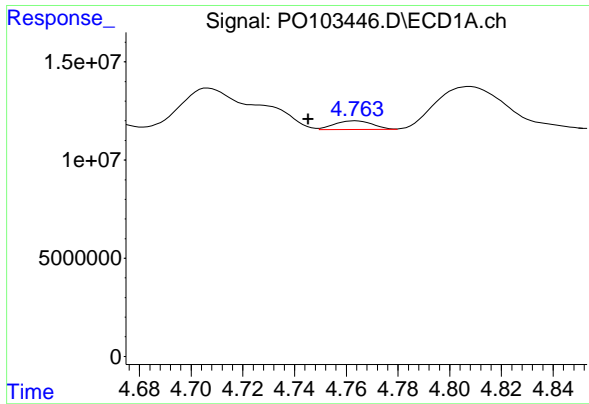
#8 AR-1221-1

R.T.: 4.660 min  
 Delta R.T.: 0.000 min  
 Response: 15973413  
 Conc: 179.96 ng/ml



#8 AR-1221-1

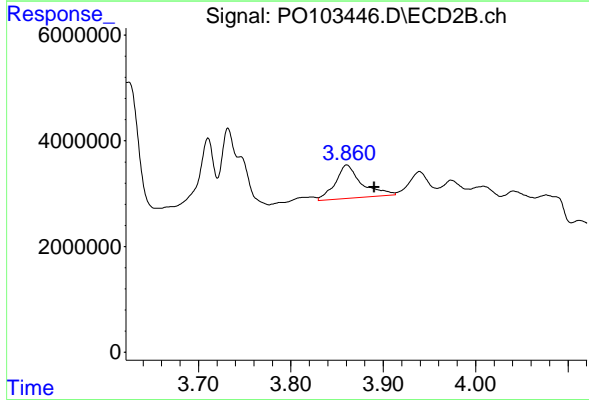
R.T.: 3.823 min  
 Delta R.T.: 0.017 min  
 Response: 1433886  
 Conc: 46.56 ng/ml



#9 AR-1221-2

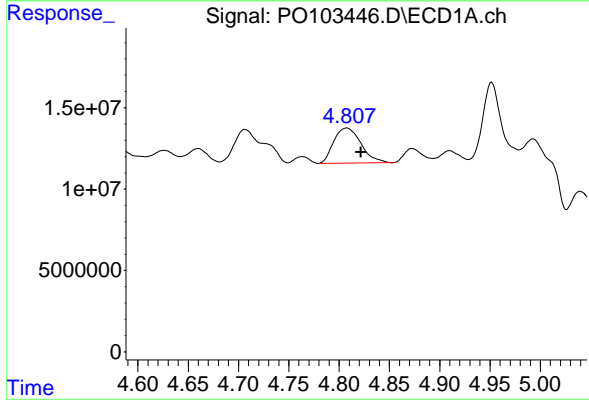
R.T.: 4.764 min  
 Delta R.T.: 0.019 min  
 Response: 4539997  
 Conc: 67.45 ng/ml

Instrument :  
 ECD\_O  
 ClientSampleId :  
 1260



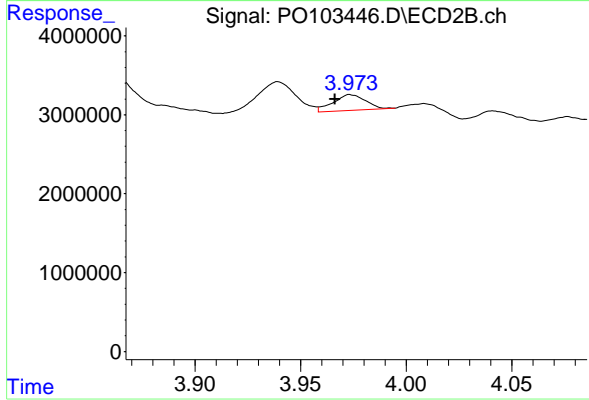
#9 AR-1221-2

R.T.: 3.861 min  
 Delta R.T.: -0.030 min  
 Response: 12556473  
 Conc: 516.26 ng/ml



#10 AR-1221-3

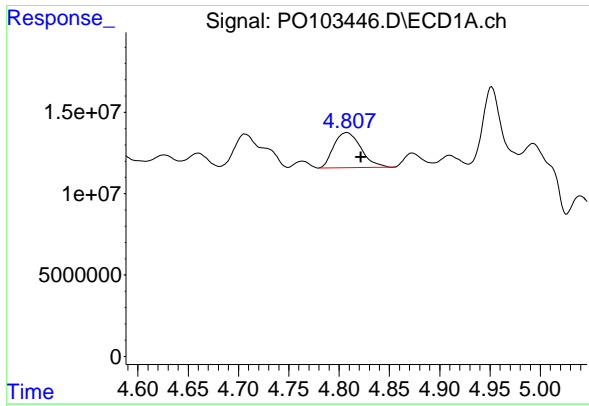
R.T.: 4.808 min  
 Delta R.T.: -0.014 min  
 Response: 40154955  
 Conc: 199.92 ng/ml



#10 AR-1221-3

R.T.: 3.974 min  
 Delta R.T.: 0.007 min  
 Response: 2124465  
 Conc: 29.64 ng/ml

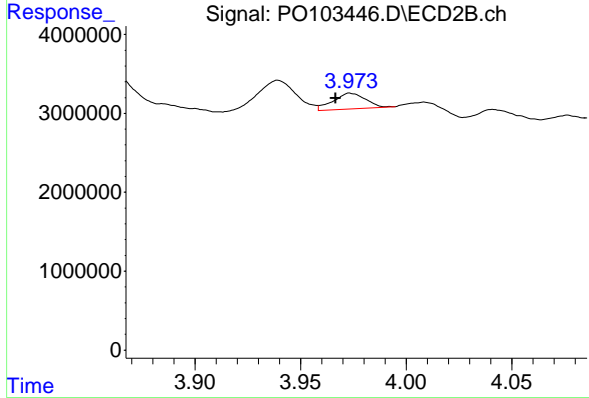




#11 AR-1232-1

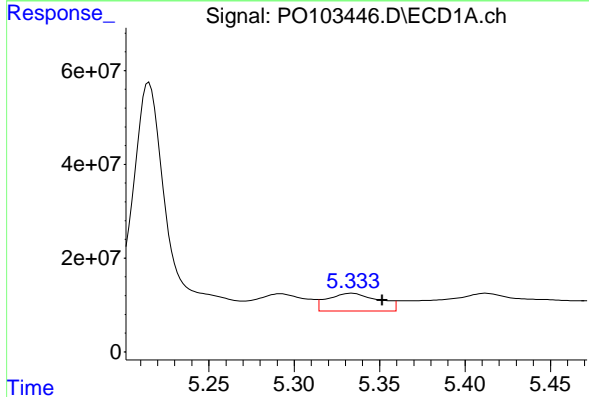
R.T.: 4.808 min  
 Delta R.T.: -0.014 min  
 Response: 40154955  
 Conc: 241.81 ng/ml

Instrument :  
 ECD\_O  
 ClientSampleId :  
 1260



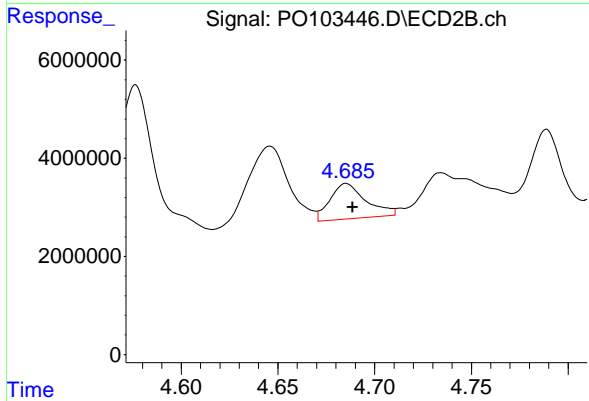
#11 AR-1232-1

R.T.: 3.974 min  
 Delta R.T.: 0.007 min  
 Response: 2124465  
 Conc: 35.67 ng/ml



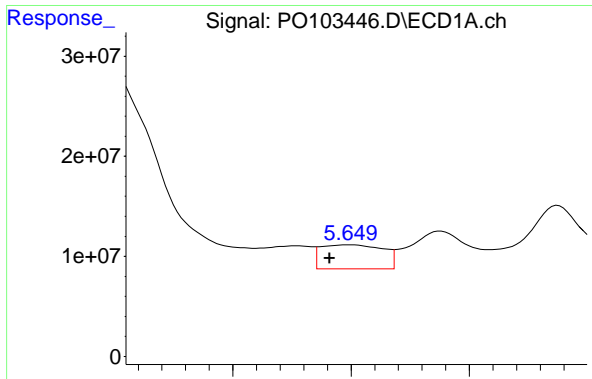
#12 AR-1232-2

R.T.: 5.334 min  
 Delta R.T.: -0.018 min  
 Response: 78111168  
 Conc: 914.94 ng/ml



#12 AR-1232-2

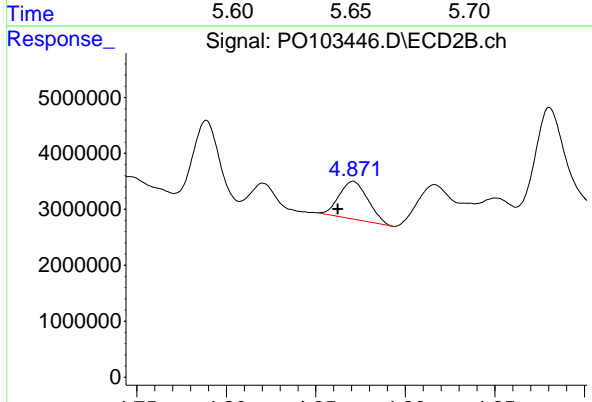
R.T.: 4.685 min  
 Delta R.T.: -0.003 min  
 Response: 9342087  
 Conc: 162.98 ng/ml



#13 AR-1232-3

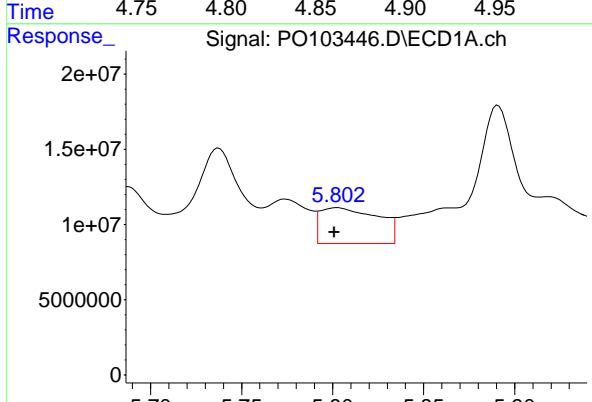
R.T.: 5.650 min  
 Delta R.T.: 0.009 min  
 Response: 43866356  
 Conc: 267.74 ng/ml

Instrument :  
 ECD\_O  
 ClientSampleId :  
 1260



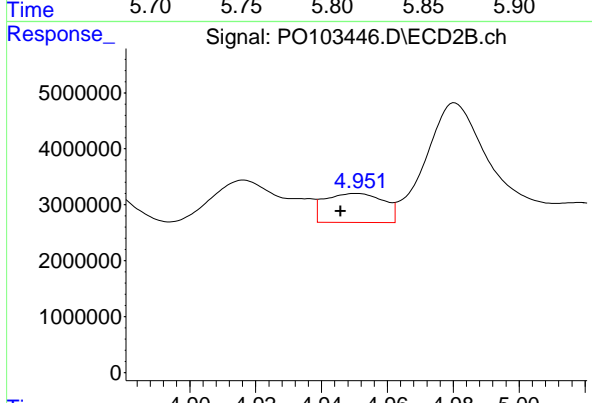
#13 AR-1232-3

R.T.: 4.871 min  
 Delta R.T.: 0.008 min  
 Response: 7552080  
 Conc: 243.89 ng/ml



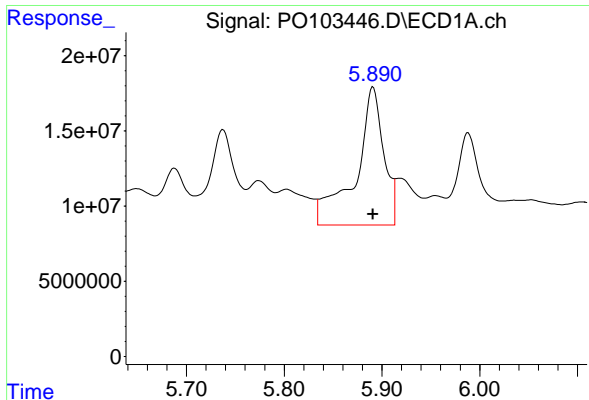
#14 AR-1232-4

R.T.: 5.802 min  
 Delta R.T.: 0.001 min  
 Response: 52320427  
 Conc: 663.27 ng/ml



#14 AR-1232-4

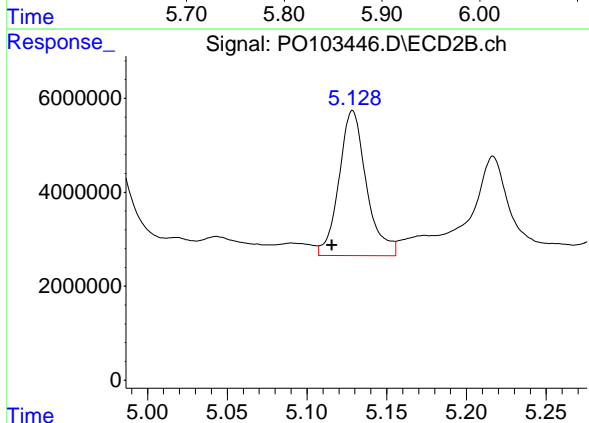
R.T.: 4.951 min  
 Delta R.T.: 0.005 min  
 Response: 6442664  
 Conc: 250.83 ng/ml



#15 AR-1232-5

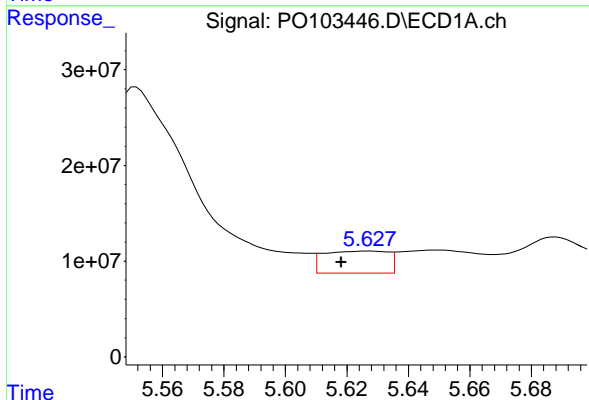
R.T.: 5.891 min  
 Delta R.T.: 0.000 min  
 Response: 183296858  
 Conc: 3242.00 ng/ml

Instrument :  
 ECD\_O  
 ClientSampleId :  
 1260



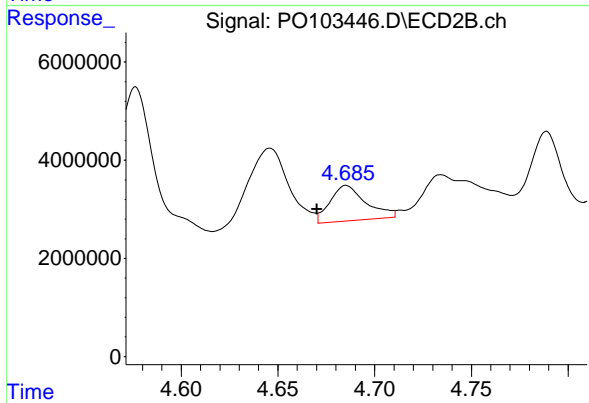
#15 AR-1232-5

R.T.: 5.129 min  
 Delta R.T.: 0.013 min  
 Response: 37062101  
 Conc: 1333.63 ng/ml



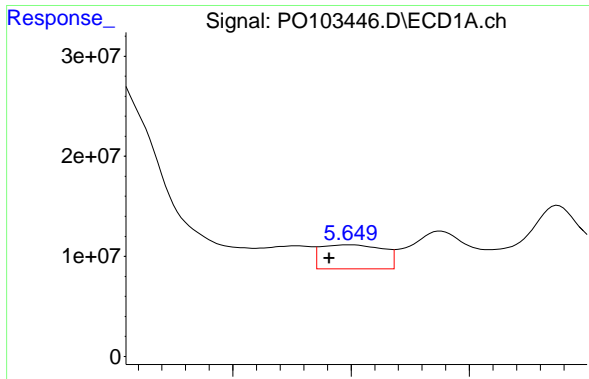
#16 AR-1242-1

R.T.: 5.627 min  
 Delta R.T.: 0.009 min  
 Response: 33476754  
 Conc: 163.60 ng/ml



#16 AR-1242-1

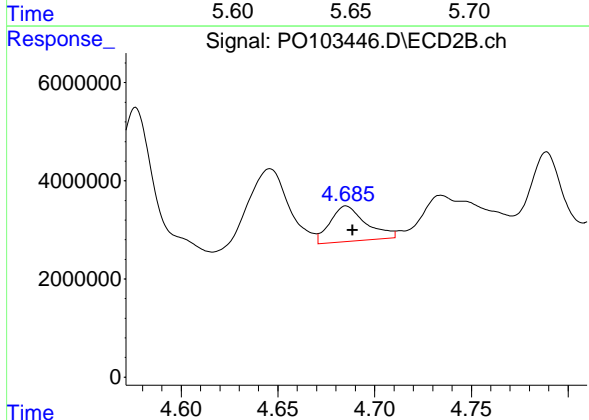
R.T.: 4.685 min  
 Delta R.T.: 0.015 min  
 Response: 9342087  
 Conc: 141.31 ng/ml



#17 AR-1242-2

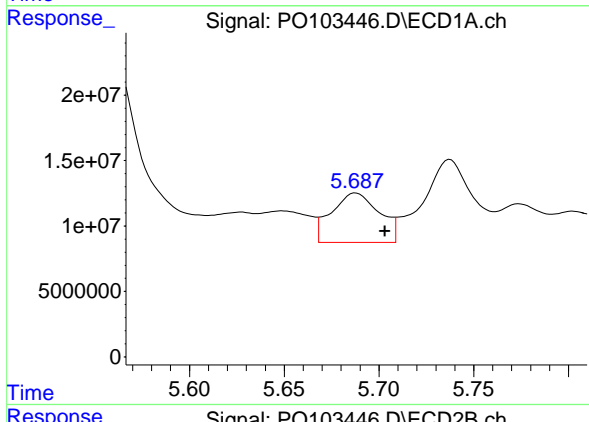
R.T.: 5.650 min  
 Delta R.T.: 0.009 min  
 Response: 43866356  
 Conc: 150.59 ng/ml

Instrument :  
 ECD\_O  
 ClientSampleId :  
 1260



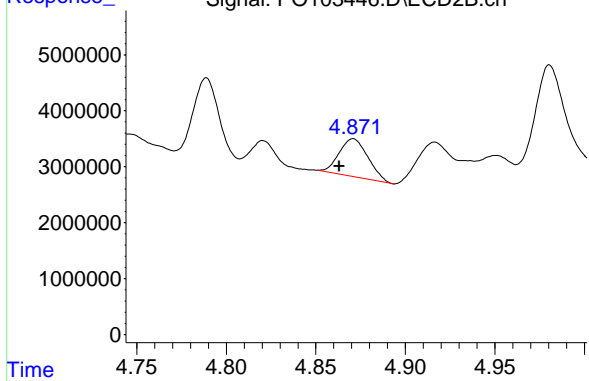
#17 AR-1242-2

R.T.: 4.685 min  
 Delta R.T.: -0.003 min  
 Response: 9342087  
 Conc: 93.85 ng/ml



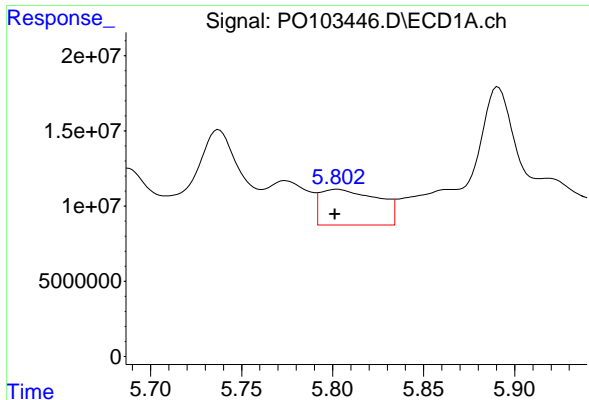
#18 AR-1242-3

R.T.: 5.688 min  
 Delta R.T.: -0.015 min  
 Response: 66498985  
 Conc: 383.65 ng/ml



#18 AR-1242-3

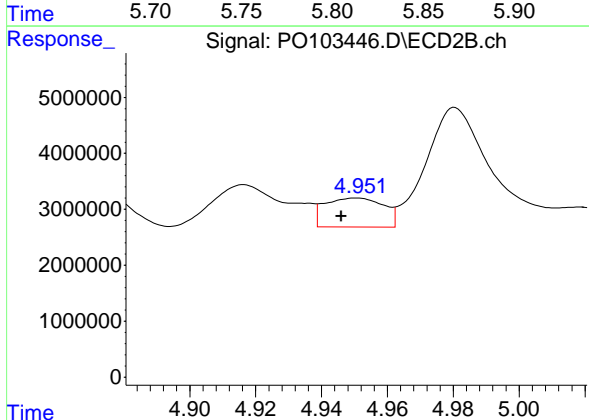
R.T.: 4.871 min  
 Delta R.T.: 0.008 min  
 Response: 7552080  
 Conc: 137.99 ng/ml



#19 AR-1242-4

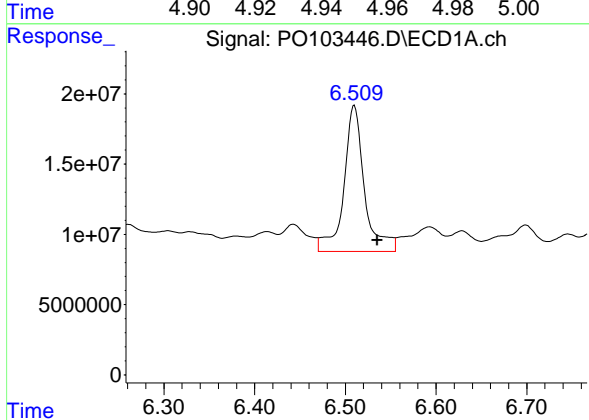
R.T.: 5.802 min  
 Delta R.T.: 0.001 min  
 Response: 52320427  
 Conc: 364.25 ng/ml

Instrument :  
 ECD\_O  
 ClientSampleId :  
 1260



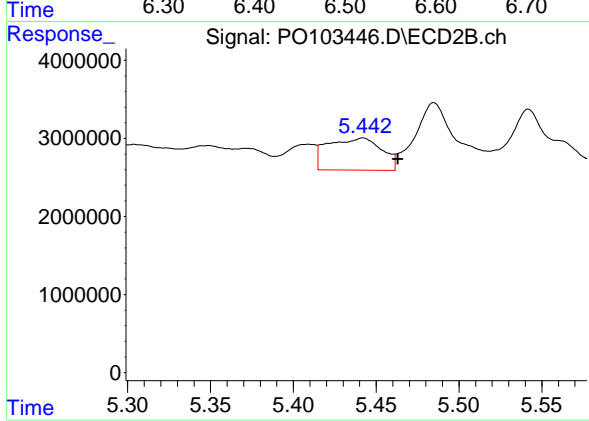
#19 AR-1242-4

R.T.: 4.951 min  
 Delta R.T.: 0.005 min  
 Response: 6442664  
 Conc: 129.70 ng/ml



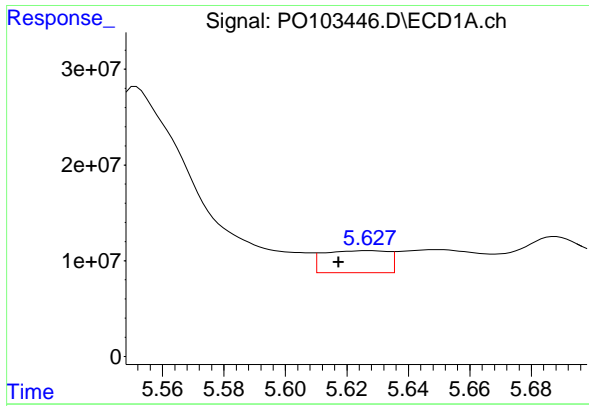
#20 AR-1242-5

R.T.: 6.510 min  
 Delta R.T.: -0.025 min  
 Response: 163950028  
 Conc: 1145.01 ng/ml



#20 AR-1242-5

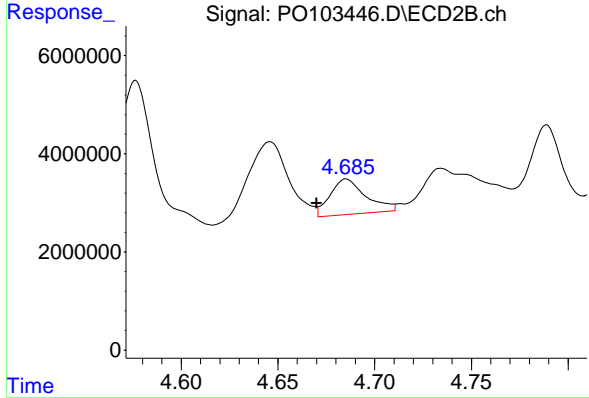
R.T.: 5.442 min  
 Delta R.T.: -0.021 min  
 Response: 9331403  
 Conc: 152.64 ng/ml



#21 AR-1248-1

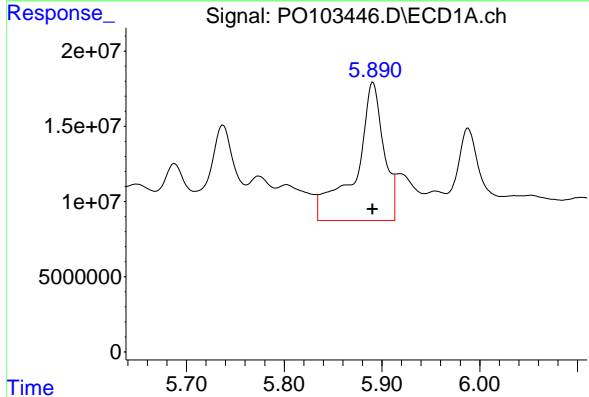
R.T.: 5.627 min  
 Delta R.T.: 0.010 min  
 Response: 33476754  
 Conc: 218.14 ng/ml

Instrument :  
 ECD\_O  
 ClientSampleId :  
 1260



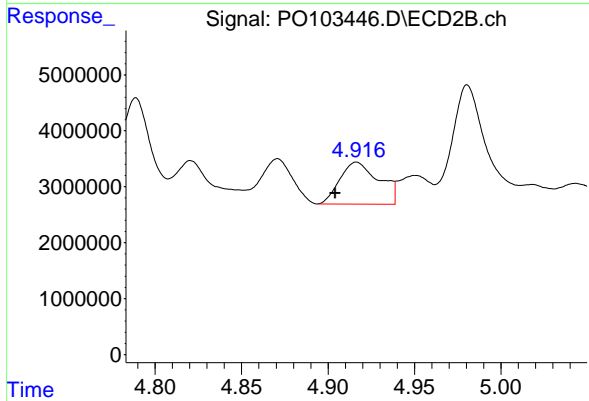
#21 AR-1248-1

R.T.: 4.685 min  
 Delta R.T.: 0.016 min  
 Response: 9342087  
 Conc: 185.15 ng/ml



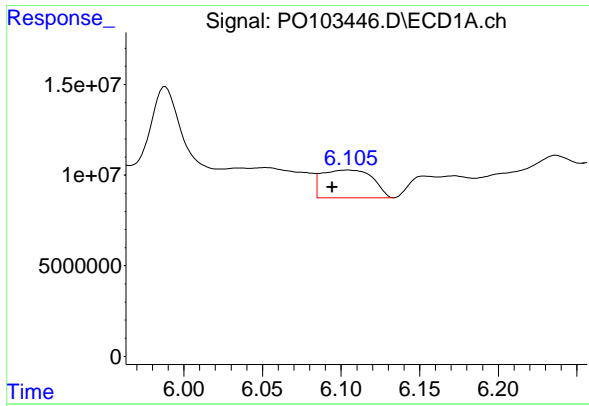
#22 AR-1248-2

R.T.: 5.891 min  
 Delta R.T.: 0.000 min  
 Response: 183296858  
 Conc: 891.15 ng/ml



#22 AR-1248-2

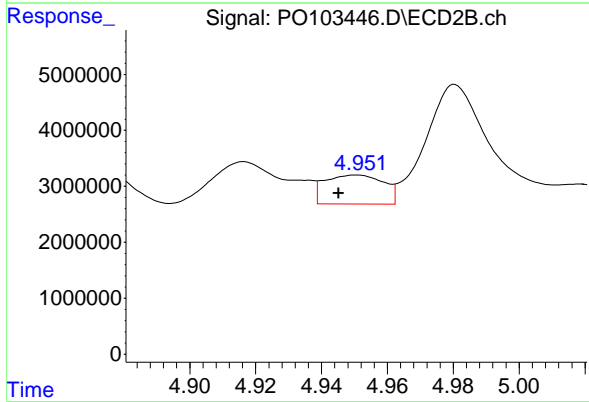
R.T.: 4.916 min  
 Delta R.T.: 0.012 min  
 Response: 11793037  
 Conc: 179.02 ng/ml



#23 AR-1248-3

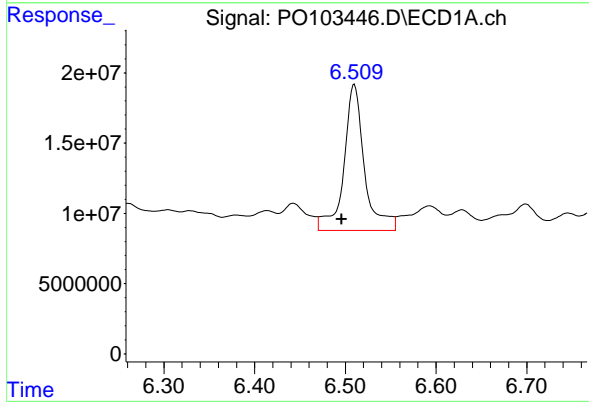
R.T.: 6.105 min  
Delta R.T.: 0.010 min  
Response: 34420330  
Conc: 152.84 ng/ml

Instrument :  
ECD\_O  
ClientSampleId :  
1260



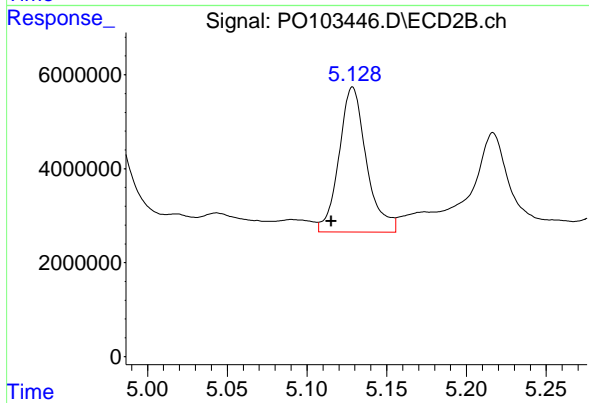
#23 AR-1248-3

R.T.: 4.951 min  
Delta R.T.: 0.006 min  
Response: 6442664  
Conc: 89.00 ng/ml



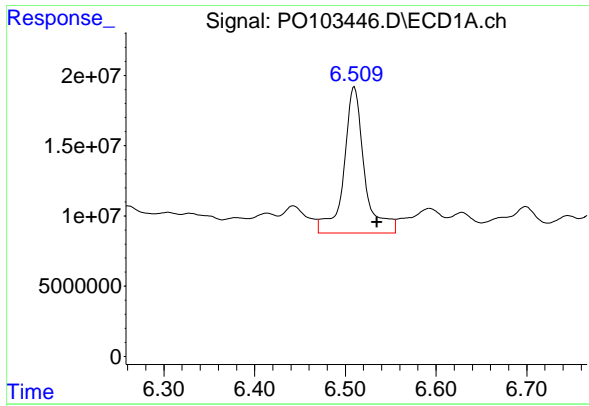
#24 AR-1248-4

R.T.: 6.510 min  
Delta R.T.: 0.014 min  
Response: 163950028  
Conc: 637.11 ng/ml



#24 AR-1248-4

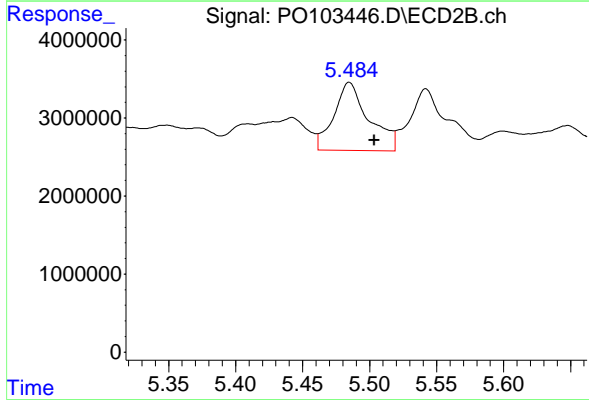
R.T.: 5.129 min  
Delta R.T.: 0.013 min  
Response: 37062101  
Conc: 438.52 ng/ml



#25 AR-1248-5

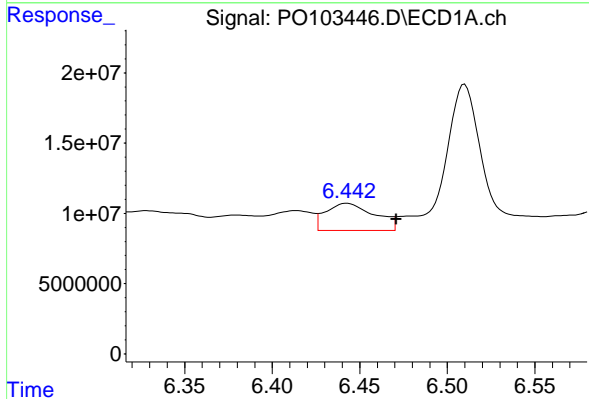
R.T.: 6.510 min  
Delta R.T.: -0.025 min  
Response: 163950028  
Conc: 672.93 ng/ml

Instrument :  
ECD\_O  
ClientSampleId :  
1260



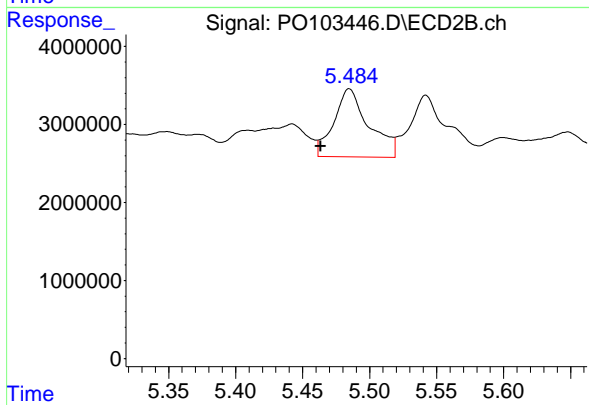
#25 AR-1248-5

R.T.: 5.485 min  
Delta R.T.: -0.019 min  
Response: 15829942  
Conc: 180.28 ng/ml



#26 AR-1254-1

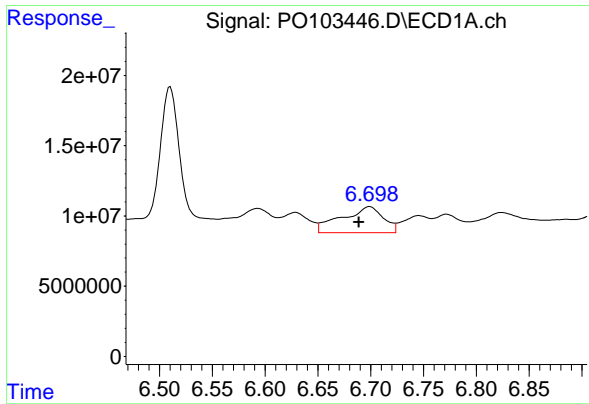
R.T.: 6.443 min  
Delta R.T.: -0.028 min  
Response: 37477323  
Conc: 152.19 ng/ml



#26 AR-1254-1

R.T.: 5.485 min  
Delta R.T.: 0.021 min  
Response: 15829942  
Conc: 129.88 ng/ml

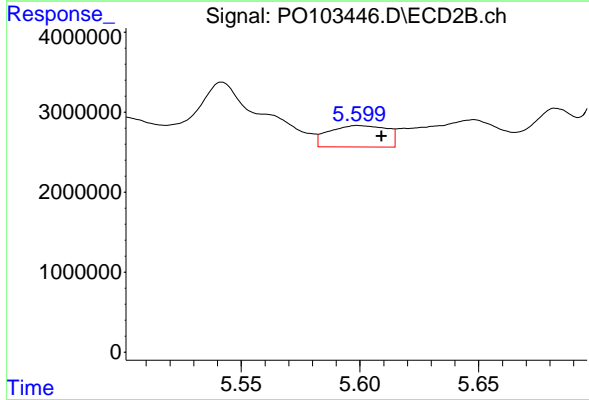




#27 AR-1254-2

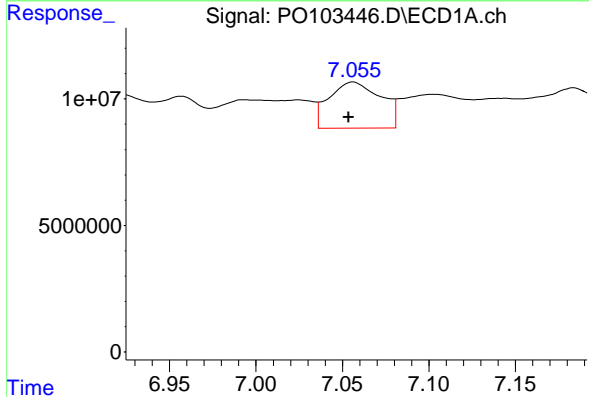
R.T.: 6.699 min  
 Delta R.T.: 0.010 min  
 Response: 50870513  
 Conc: 140.55 ng/ml

Instrument :  
 ECD\_O  
 ClientSampleId :  
 1260



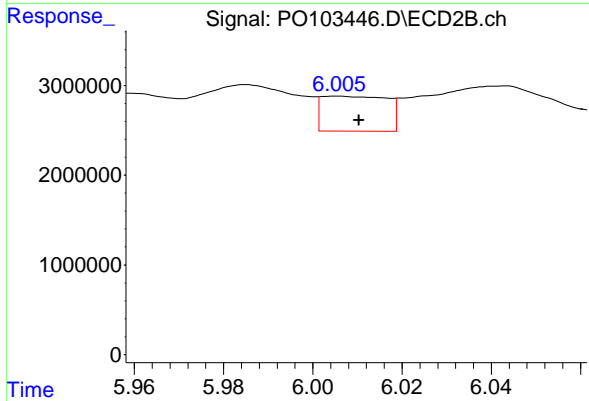
#27 AR-1254-2

R.T.: 5.599 min  
 Delta R.T.: -0.010 min  
 Response: 4547306  
 Conc: 43.06 ng/ml



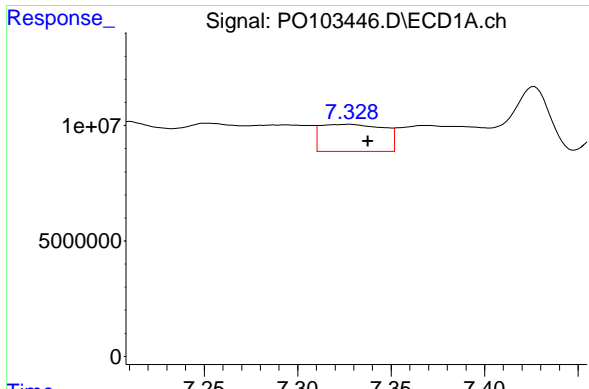
#28 AR-1254-3

R.T.: 7.056 min  
 Delta R.T.: 0.003 min  
 Response: 38107013  
 Conc: 104.68 ng/ml



#28 AR-1254-3

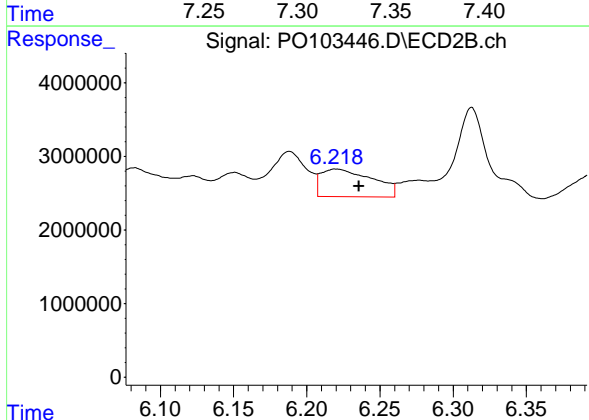
R.T.: 6.005 min  
 Delta R.T.: -0.005 min  
 Response: 3984432  
 Conc: 23.18 ng/ml



#29 AR-1254-4

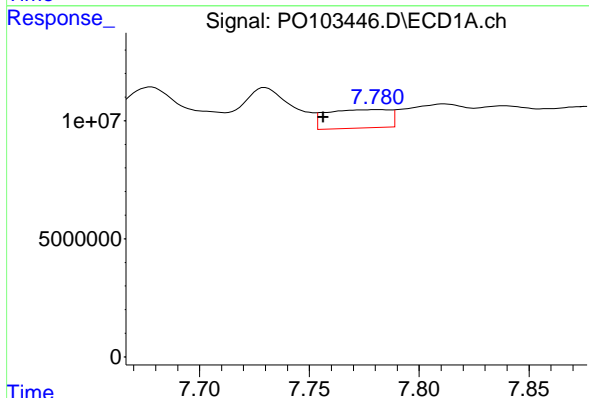
R.T.: 7.328 min  
 Delta R.T.: -0.010 min  
 Response: 27759447  
 Conc: 97.93 ng/ml

Instrument :  
 ECD\_O  
 ClientSampleId :  
 1260



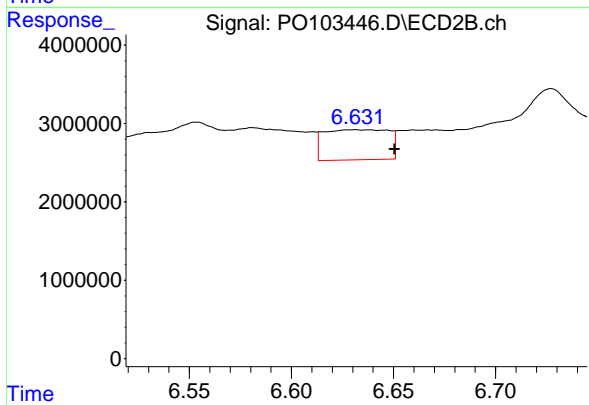
#29 AR-1254-4

R.T.: 6.220 min  
 Delta R.T.: -0.016 min  
 Response: 9255044  
 Conc: 89.81 ng/ml



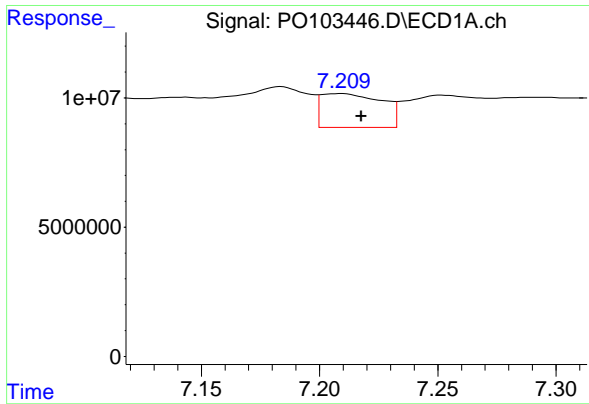
#30 AR-1254-5

R.T.: 7.781 min  
 Delta R.T.: 0.025 min  
 Response: 15754727  
 Conc: 59.12 ng/ml



#30 AR-1254-5

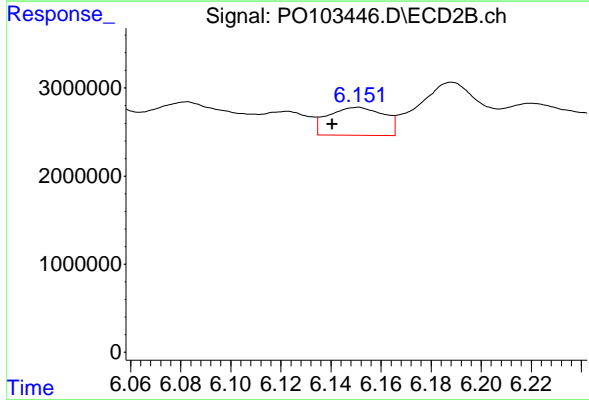
R.T.: 6.631 min  
 Delta R.T.: -0.019 min  
 Response: 8434546  
 Conc: 61.13 ng/ml



#31 AR-1260-1

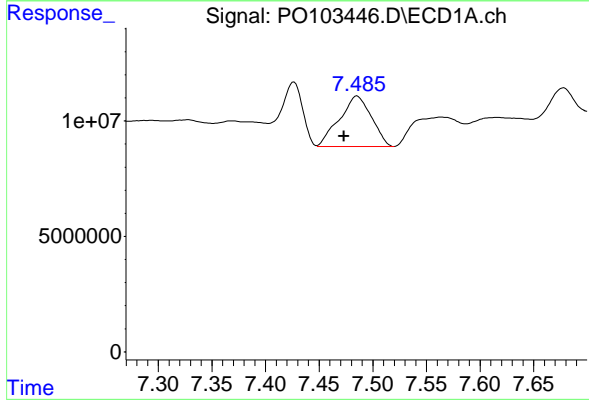
R.T.: 7.210 min  
 Delta R.T.: -0.008 min  
 Response: 23338065  
 Conc: 89.24 ng/ml

Instrument :  
 ECD\_O  
 ClientSampleId :  
 1260



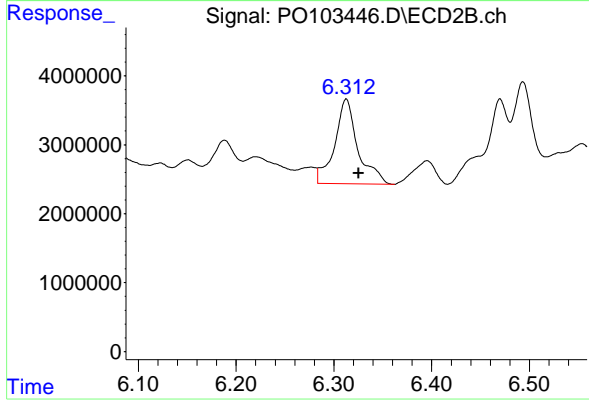
#31 AR-1260-1

R.T.: 6.151 min  
 Delta R.T.: 0.010 min  
 Response: 4900087  
 Conc: 46.38 ng/ml



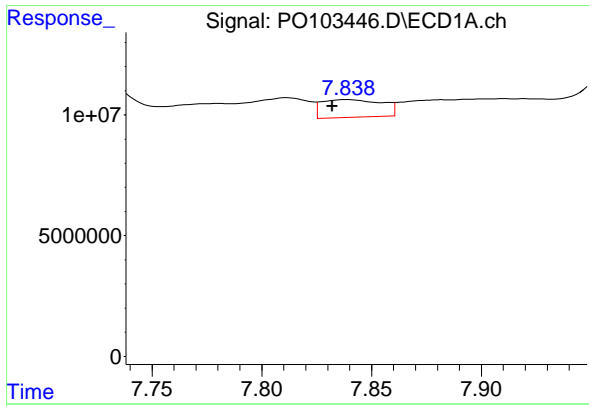
#32 AR-1260-2

R.T.: 7.485 min  
 Delta R.T.: 0.012 min  
 Response: 45605464  
 Conc: 140.06 ng/ml



#32 AR-1260-2

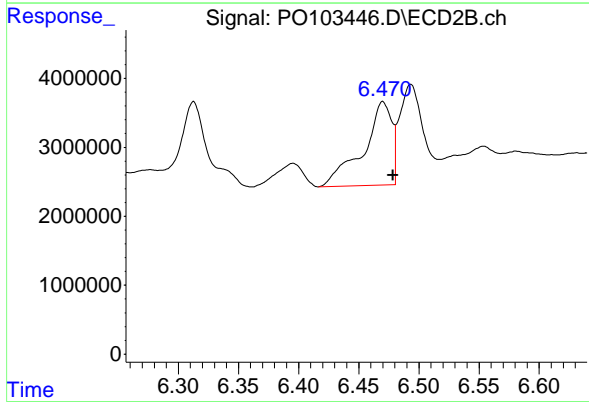
R.T.: 6.313 min  
 Delta R.T.: -0.013 min  
 Response: 20336844  
 Conc: 162.48 ng/ml



#33 AR-1260-3

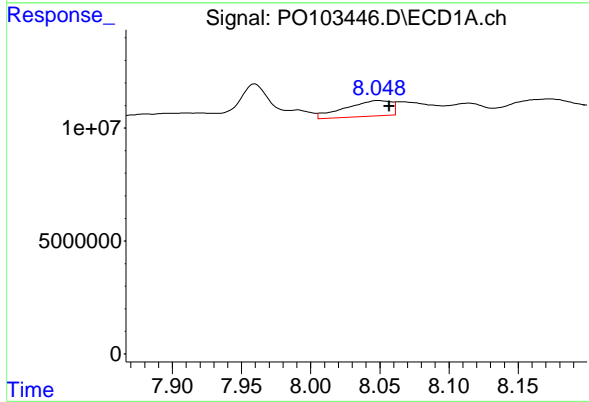
R.T.: 7.839 min  
 Delta R.T.: 0.007 min  
 Response: 14020950  
 Conc: 56.56 ng/ml

Instrument :  
 ECD\_O  
 ClientSampleId :  
 1260



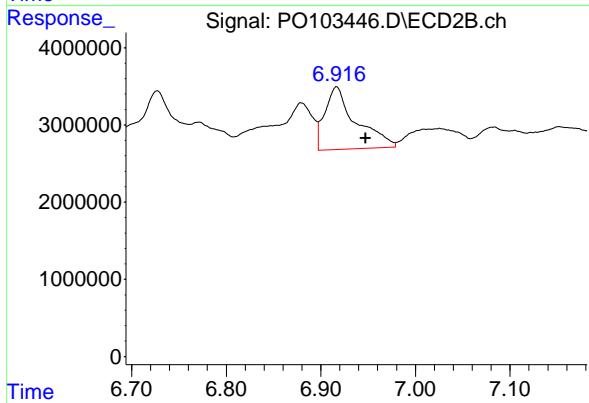
#33 AR-1260-3

R.T.: 6.470 min  
 Delta R.T.: -0.009 min  
 Response: 19913047  
 Conc: 168.60 ng/ml



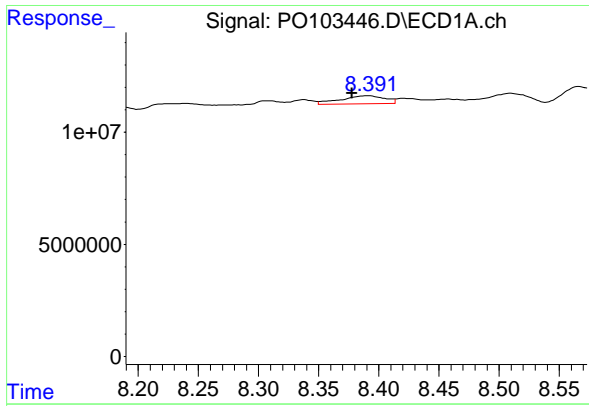
#34 AR-1260-4

R.T.: 8.049 min  
 Delta R.T.: -0.008 min  
 Response: 15931641  
 Conc: 65.38 ng/ml



#34 AR-1260-4

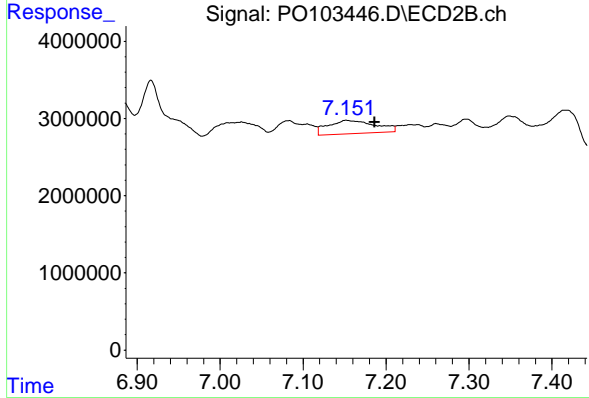
R.T.: 6.917 min  
 Delta R.T.: -0.031 min  
 Response: 18540159  
 Conc: 207.76 ng/ml



#35 AR-1260-5

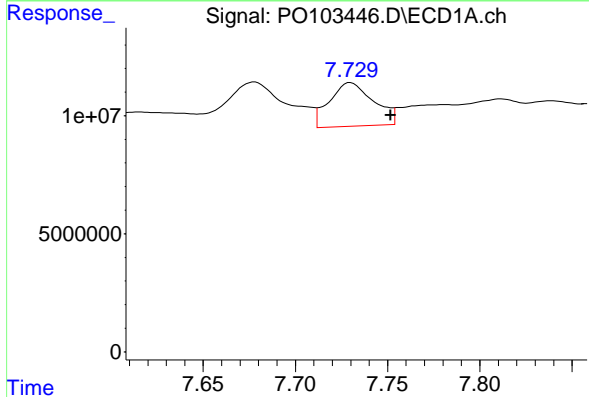
R.T.: 8.392 min  
 Delta R.T.: 0.014 min  
 Response: 9231658  
 Conc: 17.00 ng/ml

Instrument :  
 ECD\_O  
 ClientSampleId :  
 1260



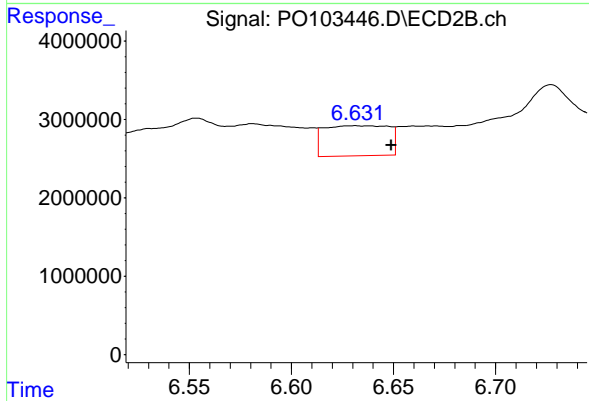
#35 AR-1260-5

R.T.: 7.152 min  
 Delta R.T.: -0.035 min  
 Response: 6862670  
 Conc: 33.13 ng/ml



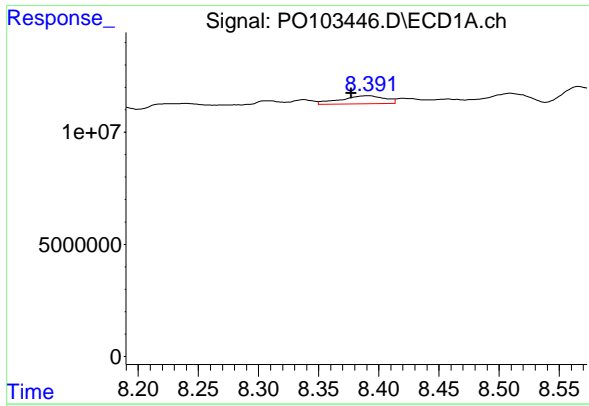
#36 AR-1262-1

R.T.: 7.730 min  
 Delta R.T.: -0.022 min  
 Response: 30951502  
 Conc: 134.42 ng/ml



#36 AR-1262-1

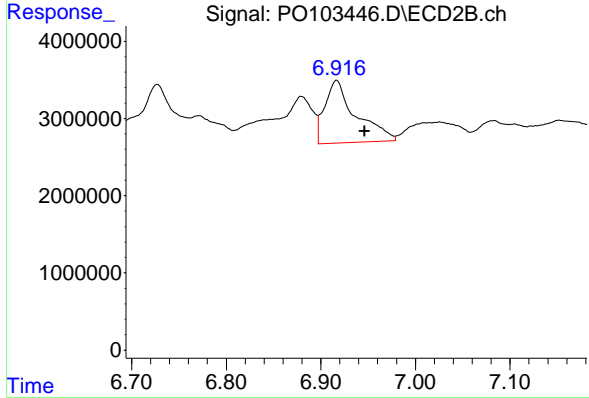
R.T.: 6.631 min  
 Delta R.T.: -0.018 min  
 Response: 8434546  
 Conc: 110.01 ng/ml



#37 AR-1262-2

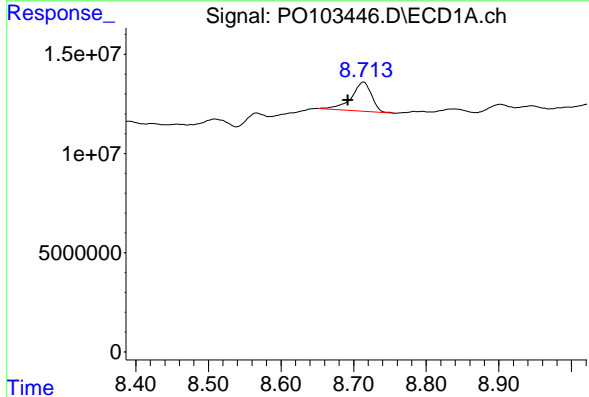
R.T.: 8.392 min  
 Delta R.T.: 0.015 min  
 Response: 9231658  
 Conc: 14.22 ng/ml

Instrument :  
 ECD\_O  
 ClientSampleId :  
 1260



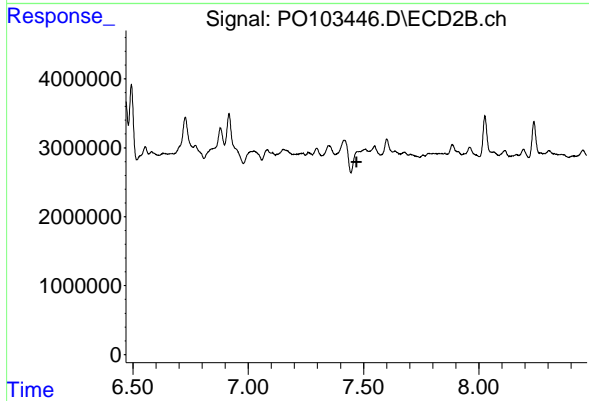
#37 AR-1262-2

R.T.: 6.917 min  
 Delta R.T.: -0.030 min  
 Response: 18540159  
 Conc: 157.33 ng/ml



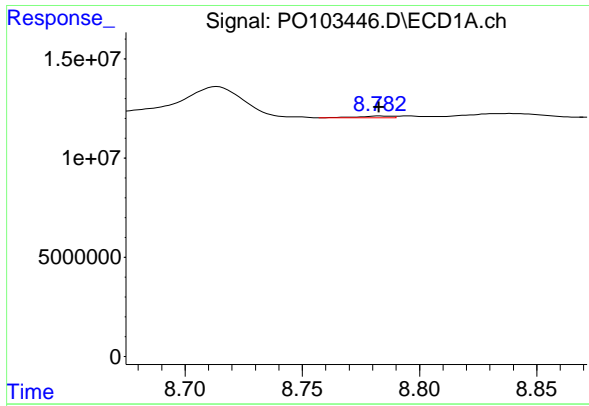
#38 AR-1262-3

R.T.: 8.714 min  
 Delta R.T.: 0.022 min  
 Response: 28663095  
 Conc: 66.86 ng/ml



#38 AR-1262-3

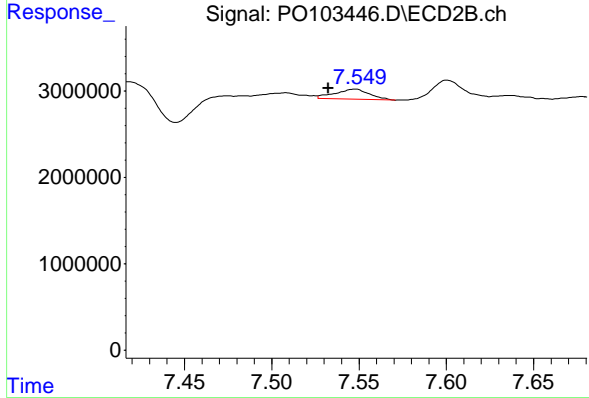
R.T.: 7.474 min  
 Delta R.T.: 0.005 min  
 Response: -4096613  
 Conc: N.D.



#39 AR-1262-4

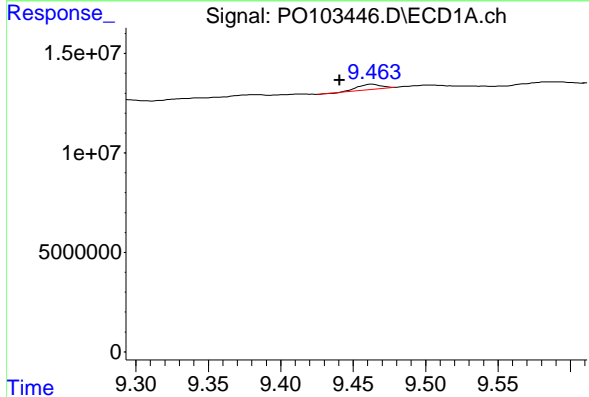
R.T.: 8.783 min  
 Delta R.T.: 0.000 min  
 Response: 952540  
 Conc: 2.83 ng/ml

Instrument :  
 ECD\_O  
 ClientSampleId :  
 1260



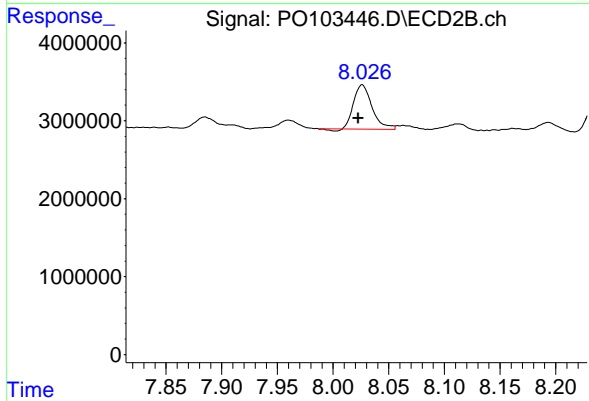
#39 AR-1262-4

R.T.: 7.548 min  
 Delta R.T.: 0.015 min  
 Response: 1564465  
 Conc: 9.36 ng/ml



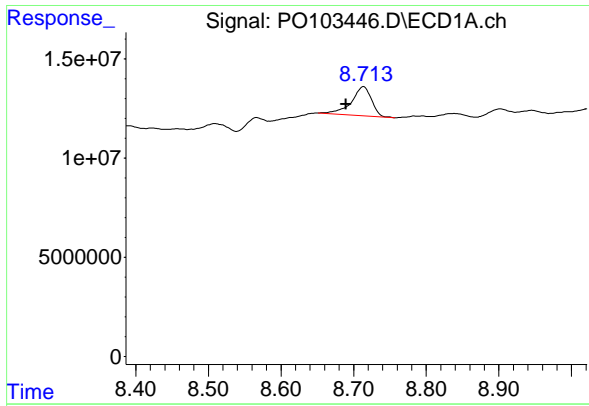
#40 AR-1262-5

R.T.: 9.463 min  
 Delta R.T.: 0.023 min  
 Response: 2847104  
 Conc: 12.01 ng/ml



#40 AR-1262-5

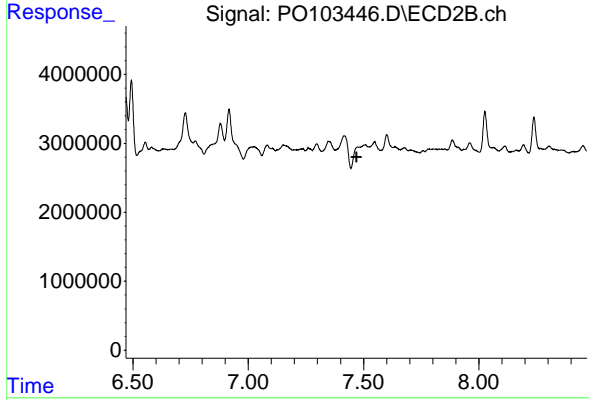
R.T.: 8.026 min  
 Delta R.T.: 0.003 min  
 Response: 6485538  
 Conc: 89.90 ng/ml



#41 AR-1268-1

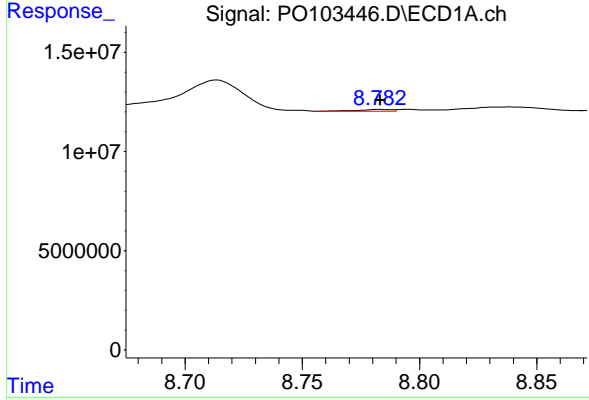
R.T.: 8.714 min  
 Delta R.T.: 0.024 min  
 Response: 28663095  
 Conc: 36.86 ng/ml

Instrument :  
 ECD\_O  
 ClientSampleId :  
 1260



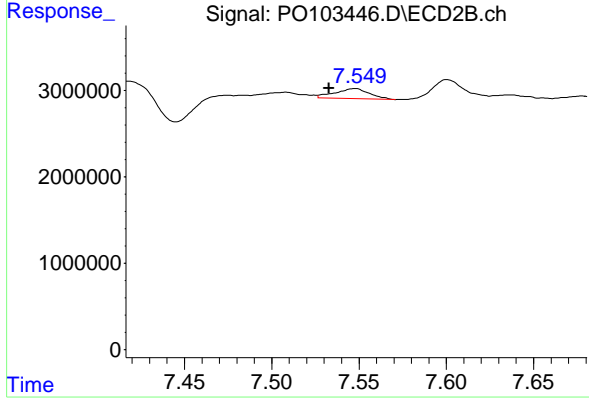
#41 AR-1268-1

R.T.: 7.474 min  
 Delta R.T.: 0.005 min  
 Response: -4096613  
 Conc: N.D.



#42 AR-1268-2

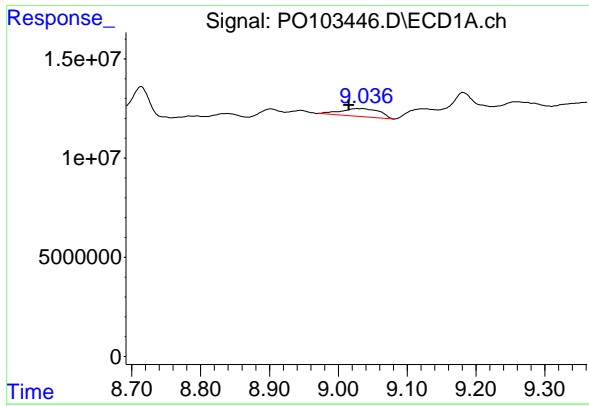
R.T.: 8.783 min  
 Delta R.T.: 0.008 min  
 Response: 952540  
 Conc: 1.33 ng/ml



#42 AR-1268-2

R.T.: 7.548 min  
 Delta R.T.: 0.015 min  
 Response: 1564465  
 Conc: 6.26 ng/ml

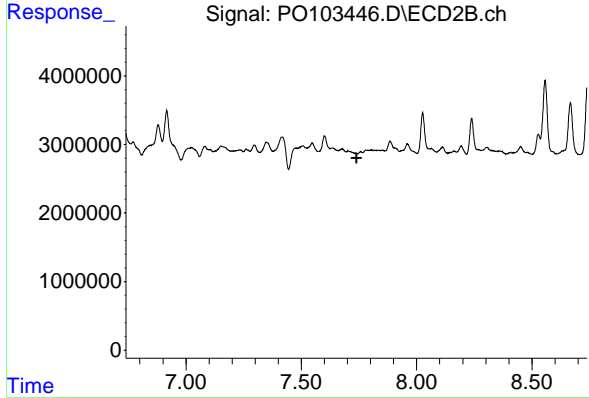




#43 AR-1268-3

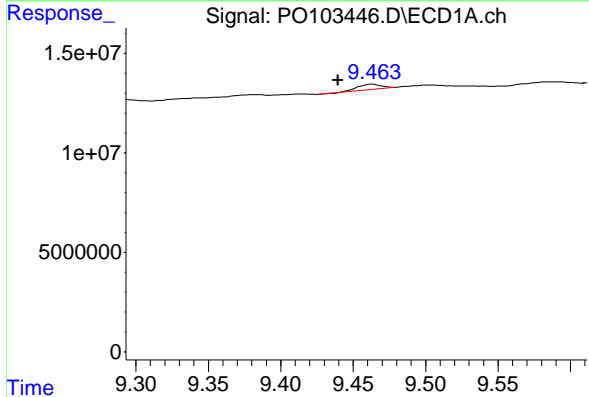
R.T.: 9.028 min  
 Delta R.T.: 0.012 min  
 Response: 15605382  
 Conc: 24.79 ng/ml

Instrument :  
 ECD\_O  
 ClientSampleId :  
 1260



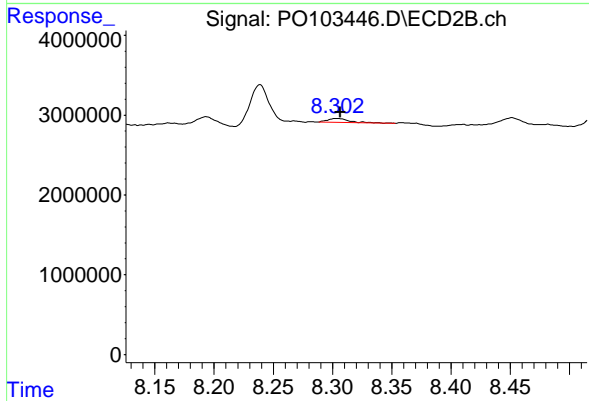
#43 AR-1268-3

R.T.: 7.757 min  
 Delta R.T.: 0.018 min  
 Response: -11675  
 Conc: N.D.



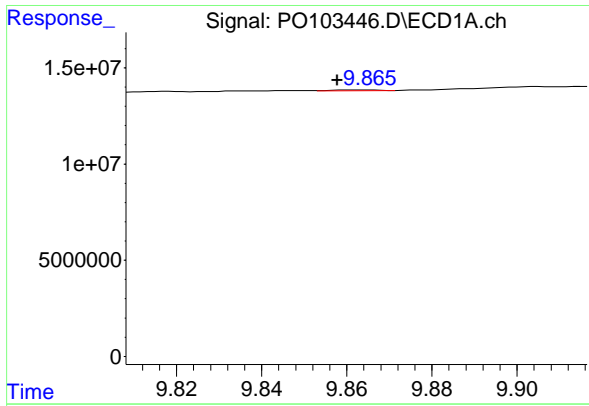
#44 AR-1268-4

R.T.: 9.463 min  
 Delta R.T.: 0.024 min  
 Response: 2847104  
 Conc: 11.23 ng/ml



#44 AR-1268-4

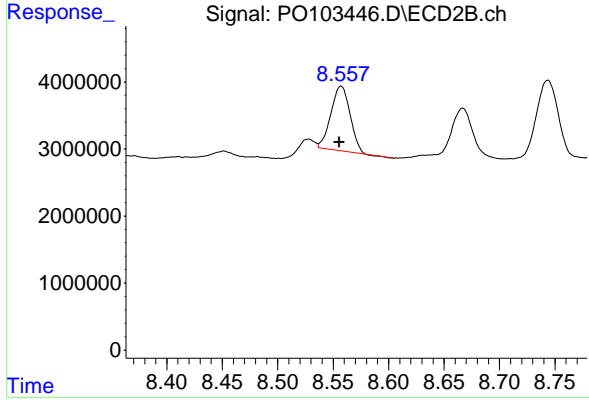
R.T.: 8.304 min  
 Delta R.T.: -0.003 min  
 Response: 600596  
 Conc: 1.11 ng/ml



#45 AR-1268-5

R.T.: 9.865 min  
 Delta R.T.: 0.007 min  
 Response: 337827  
 Conc: 0.17 ng/ml

Instrument :  
 ECD\_O  
 ClientSampleId :  
 1260



#45 AR-1268-5

R.T.: 8.557 min  
 Delta R.T.: 0.002 min  
 Response: 11553546  
 Conc: 49.64 ng/ml