

Data Path : Z:\pestpcbsrv\HPCHEM1\ECD_O\Data\P0050823\
 Data File : P0094840.D
 Signal(s) : Signal #1: ECD1A.ch Signal #2: ECD2B.ch
 Acq On : 09 May 2023 01:51
 Operator : YP/AJ
 Sample : 02658-03
 Misc :
 ALS Vial : 32 Sample Multiplier: 1

Instrument :
 ECD_O
ClientSampleId :
 327

Manual Integrations
APPROVED

Reviewed By :Yogesh Patel 05/09/2023
 Supervised By :Ankita Jodhani 05/09/2023

Integration File signal 1: autoint1.e
 Integration File signal 2: autoint2.e
 Quant Time: May 09 05:24:11 2023
 Quant Method : Z:\pestpcbsrv\HPCHEM1\ECD_O\methods\P0042623.M
 Quant Title : GC EXTRACTABLES
 QLast Update : Mon May 01 11:12:50 2023
 Response via : Initial Calibration
 Integrator: ChemStation

Volume Inj. : 2 µl
 Signal #1 Phase : ZB-MR1 Signal #2 Phase: ZB-MR2
 Signal #1 Info : 30Mx0.32mmx 0.50µ Signal #2 Info : 30M x 0.32mm x 0.25µm

Compound	RT#1	RT#2	Resp#1	Resp#2	ng/ml	ng/ml

System Monitoring Compounds						
1) SA Tetrachlo...	4.415	3.617	53924033	22764038	15.655	17.013
2) SA Decachlor...	10.255	8.629	43468123	16557104	17.911	14.710
Target Compounds						
16) L4 AR-1242-1	5.593	4.697	23213629	10201504	277.885	308.035
17) L4 AR-1242-2	5.619	4.714	26013772	6203058	206.923	125.837 #
18) L4 AR-1242-3	5.680	4.893	17111762	5678465	210.130	218.244
19) L4 AR-1242-4	5.777	4.973	14719362	3493955	239.671	118.035 #

(f)=RT Delta > 1/2 Window (#)=Amounts differ by > 25% (m)=manual int.

Data Path : Z:\pestpcbsrv\HPCHEM1\ECD_O\Data\PO050823\
 Data File : PO094840.D
 Signal(s) : Signal #1: ECD1A.ch Signal #2: ECD2B.ch
 Acq On : 09 May 2023 01:51
 Operator : YP/AJ
 Sample : 02658-03
 Misc :
 ALS Vial : 32 Sample Multiplier: 1

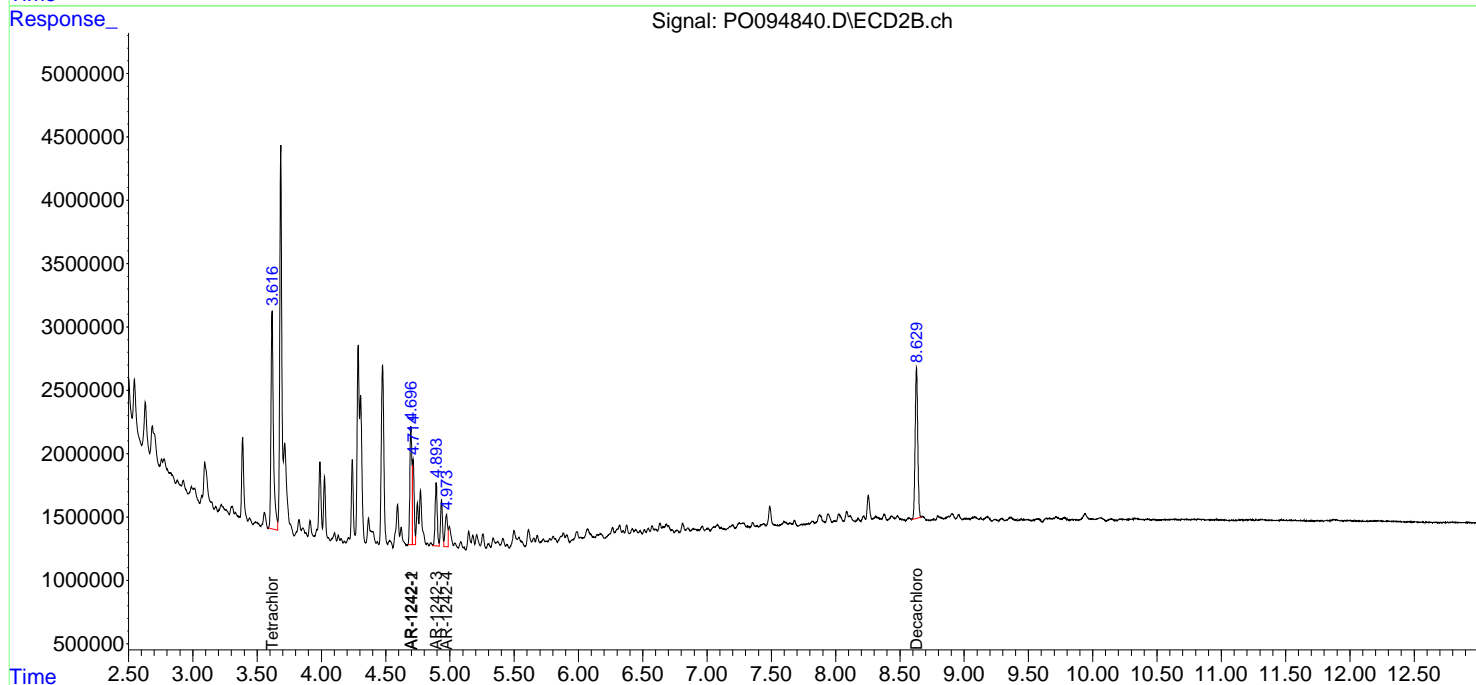
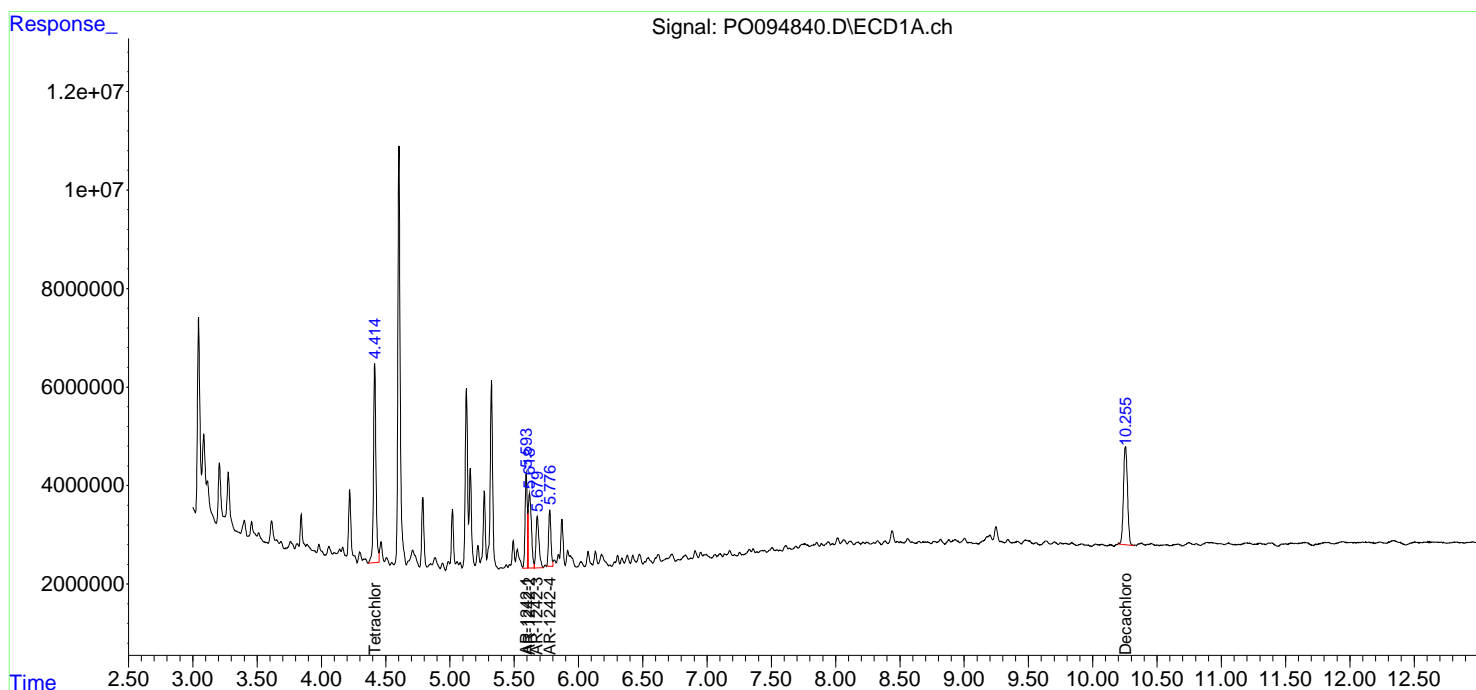
Instrument :
 ECD_O
 ClientSampleId :
 327

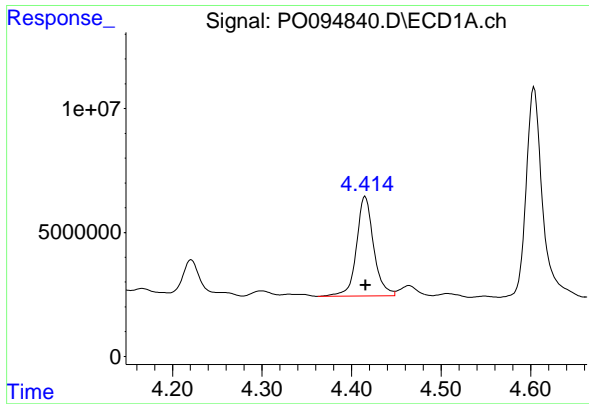
Manual Integrations
 APPROVED

Reviewed By :Yogesh Patel 05/09/2023
 Supervised By :Ankita Jodhani 05/09/2023

Integration File signal 1: autoint1.e
 Integration File signal 2: autoint2.e
 Quant Time: May 09 05:24:11 2023
 Quant Method : Z:\pestpcbsrv\HPCHEM1\ECD_O\methods\PO042623.M
 Quant Title : GC EXTRACTABLES
 QLast Update : Mon May 01 11:12:50 2023
 Response via : Initial Calibration
 Integrator: ChemStation

Volume Inj. : 2 µl
 Signal #1 Phase : ZB-MR1 Signal #2 Phase: ZB-MR2
 Signal #1 Info : 30Mx0.32mmx 0.50µ Signal #2 Info : 30M x 0.32mm x 0.25µm





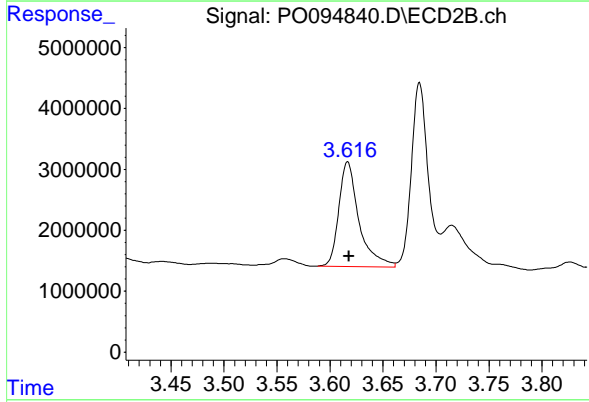
#1 Tetrachloro-m-xylene

R.T.: 4.415 min
 Delta R.T.: 0.000 min
 Response: 53924033
 Conc: 15.65 ng/ml

Instrument :
 ECD_O
 ClientSampleId :
 327

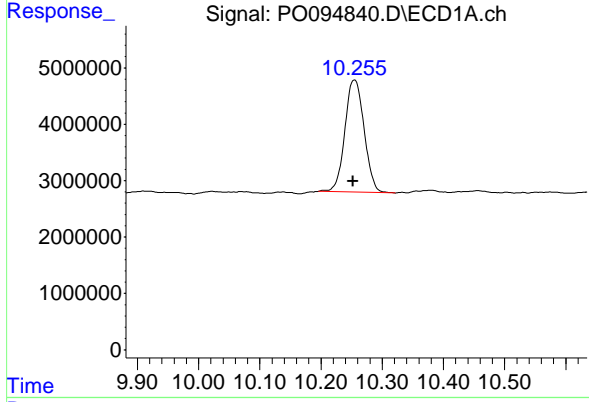
Manual Integrations
 APPROVED

Reviewed By :Yogesh Patel 05/09/2023
 Supervised By :Ankita Jodhani 05/09/2023



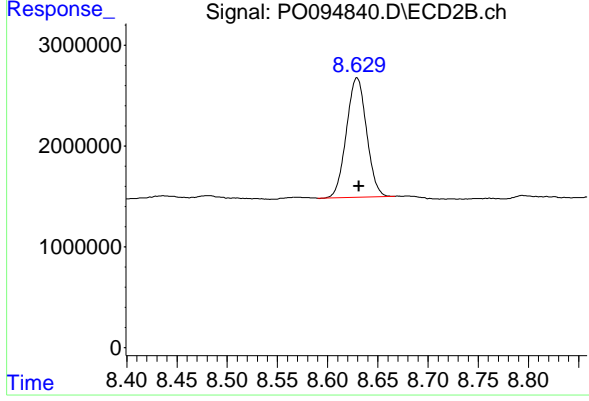
#1 Tetrachloro-m-xylene

R.T.: 3.617 min
 Delta R.T.: -0.001 min
 Response: 22764038
 Conc: 17.01 ng/ml



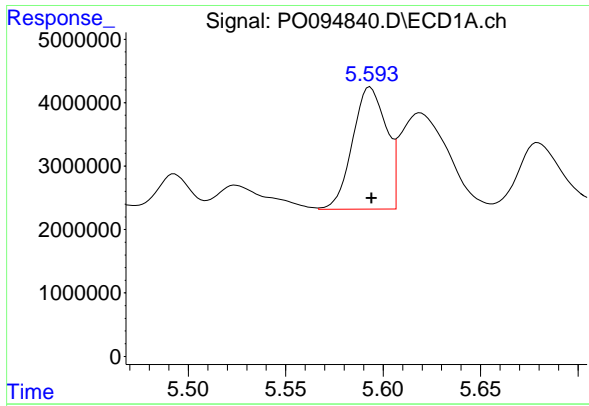
#2 Decachlorobiphenyl

R.T.: 10.255 min
 Delta R.T.: 0.003 min
 Response: 43468123
 Conc: 17.91 ng/ml



#2 Decachlorobiphenyl

R.T.: 8.629 min
 Delta R.T.: -0.002 min
 Response: 16557104
 Conc: 14.71 ng/ml



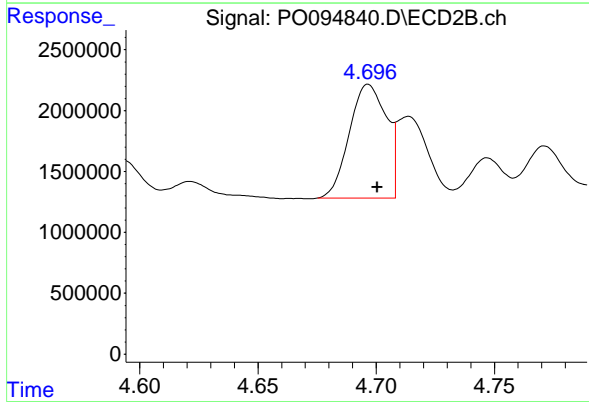
#16 AR-1242-1

R.T.: 5.593 min
 Delta R.T.: 0.000 min
 Response: 23213629
 Conc: 277.88 ng/ml

Instrument :
 ECD_O
 ClientSampleId :
 327

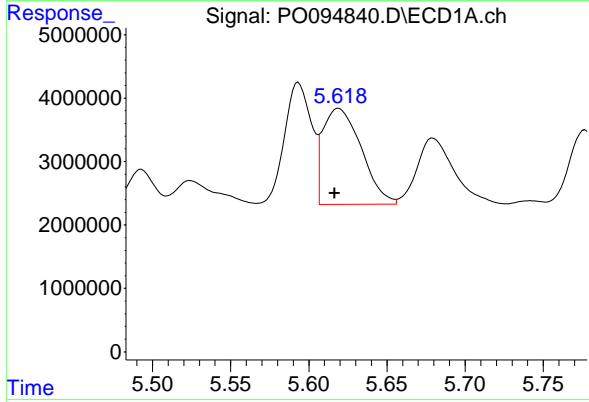
Manual Integrations
 APPROVED

Reviewed By :Yogesh Patel 05/09/2023
 Supervised By :Ankita Jodhani 05/09/2023



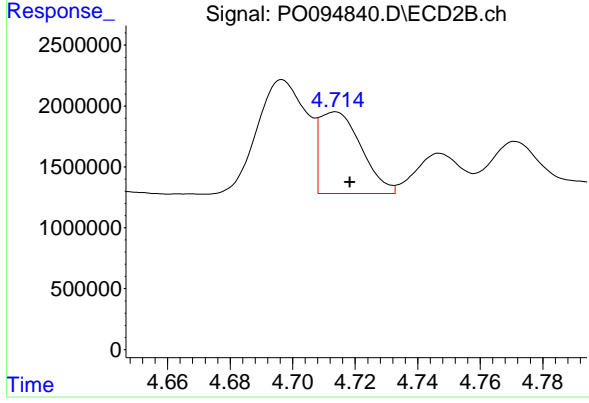
#16 AR-1242-1

R.T.: 4.697 min
 Delta R.T.: -0.004 min
 Response: 10201504
 Conc: 308.04 ng/ml



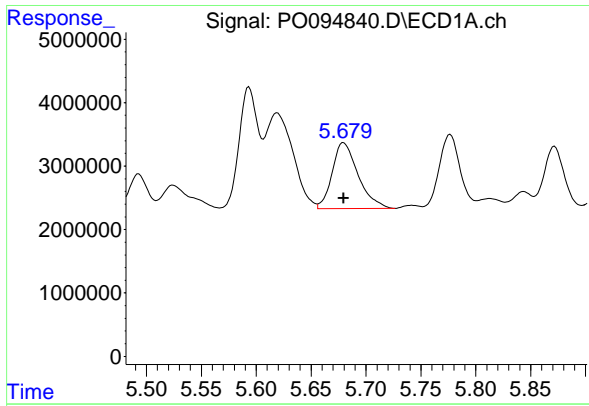
#17 AR-1242-2

R.T.: 5.619 min
 Delta R.T.: 0.003 min
 Response: 26013772
 Conc: 206.92 ng/ml



#17 AR-1242-2

R.T.: 4.714 min
 Delta R.T.: -0.005 min
 Response: 6203058
 Conc: 125.84 ng/ml



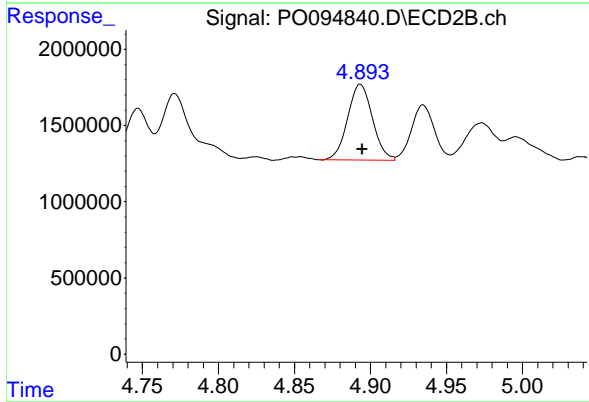
#18 AR-1242-3

R.T.: 5.680 min
 Delta R.T.: 0.000 min
 Response: 17111762
 Conc: 210.13 ng/ml

Instrument :
 ECD_O
 ClientSampleId :
 327

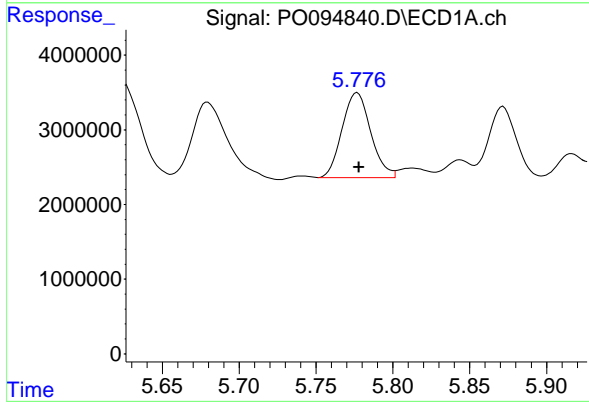
Manual Integrations
 APPROVED

Reviewed By :Yogesh Patel 05/09/2023
 Supervised By :Ankita Jodhani 05/09/2023



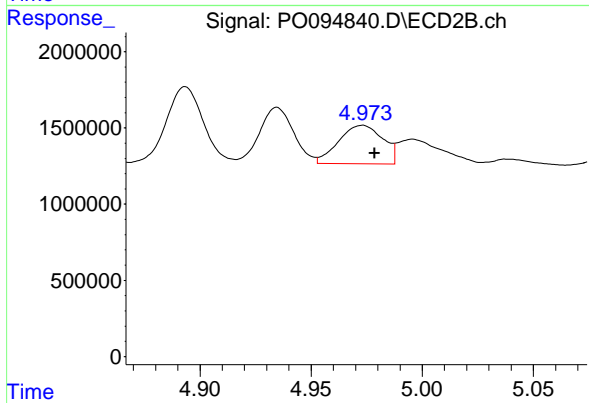
#18 AR-1242-3

R.T.: 4.893 min
 Delta R.T.: -0.001 min
 Response: 5678465
 Conc: 218.24 ng/ml



#19 AR-1242-4

R.T.: 5.777 min
 Delta R.T.: -0.001 min
 Response: 14719362
 Conc: 239.67 ng/ml



#19 AR-1242-4

R.T.: 4.973 min
 Delta R.T.: -0.006 min
 Response: 3493955
 Conc: 118.03 ng/ml