

Data Path : Z:\pestpcbsrv\HPCHEM1\ECD_0\Data\P0050824\
 Data File : PO103489.D
 Signal(s) : Signal #1: ECD1A.ch Signal #2: ECD2B.ch
 Acq On : 08 May 2024 22:24
 Operator : YP/AJ
 Sample : P2421-05 10X
 Misc :
 ALS Vial : 28 Sample Multiplier: 1

Instrument :
 ECD_0
 ClientSampleId :
 CABLE-5A

Integration File signal 1: autoint1.e
 Integration File signal 2: autoint2.e
 Quant Time: May 09 01:41:41 2024
 Quant Method : Z:\pestpcbsrv\HPCHEM1\ECD_0\methods\P0050624.M
 Quant Title : GC EXTRACTABLES
 QLast Update : Tue May 07 04:55:35 2024
 Response via : Initial Calibration
 Integrator: ChemStation

Volume Inj. : 2 µl
 Signal #1 Phase : ZB-MR2 Signal #2 Phase: ZB-MR2
 Signal #1 Info : 30Mx0.32mmx 0.50µ Signal #2 Info : 30M x 0.32mm x 0.25µm

Compound	RT#1	RT#2	Resp#1	Resp#2	ng/ml	ng/ml

System Monitoring Compounds						
1) SA Tetrachlo...	4.453	3.591	13407119	4810722	1.742	1.910
2) SA Decachlor...	10.212	8.557	10070764	2270025	2.125	1.745
Target Compounds						
3) L1 AR-1016-1	5.610	4.669	1392648	327243	5.727	4.170 #
4) L1 AR-1016-2	5.639	4.689	2333934	469942	6.738	3.924 #
5) L1 AR-1016-3	5.697	4.859	1053309	251136	5.080	3.758 #
6) L1 AR-1016-4	5.805	4.903	620314	289833	3.639	6.307 #
7) L1 AR-1016-5	6.098	5.115	1482686	690431	9.360	11.058
8) L2 AR-1221-1	4.665	3.817	192136	76554	2.165	2.486
9) L2 AR-1221-2	4.759	3.887	387344	230223	5.755	9.466 #
10) L2 AR-1221-3	4.817	3.962	227599	47773	1.133	0.667 #
11) L3 AR-1232-1	4.817	3.962	227599	47773	1.371	0.802 #
12) L3 AR-1232-2	5.353	4.689	695587	469942	8.148	8.199
13) L3 AR-1232-3	5.639	4.859	2333934	251136	14.245	8.110 #
14) L3 AR-1232-4	5.805	4.946	620314	411035	7.864	16.003 #
15) L3 AR-1232-5	5.894	5.115	1208275	690431	21.371	24.844
16) L4 AR-1242-1	5.610	4.669	1392648	327243	6.806	4.950 #
17) L4 AR-1242-2	5.639	4.689	2333934	469942	8.012	4.721 #
18) L4 AR-1242-3	5.697	4.859	1053309	251136	6.077	4.589
19) L4 AR-1242-4	5.805	4.946	620314	411035	4.319	8.275 #
20) L4 AR-1242-5	6.538	5.463	1814117	1131732	12.670	18.512 #
21) L5 AR-1248-1	5.610	4.669	1392648	327243	9.075	6.485 #
22) L5 AR-1248-2	5.894	4.903	1208275	289833	5.874	4.400 #
23) L5 AR-1248-3	6.098	4.946	1482686	411035	6.584	5.678
24) L5 AR-1248-4	6.499	5.115	2444097	690431	9.498	8.169
25) L5 AR-1248-5	6.538	5.501	1814117	1056039	7.446	12.026 #
26) L6 AR-1254-1	6.475	5.463	2495258	1131732	10.133	9.285
27) L6 AR-1254-2	6.692	5.611	3109140	1424465	8.590	13.489 #
28) L6 AR-1254-3	7.059	6.010	2997073	1704078	8.233	9.915
29) L6 AR-1254-4	7.342	6.236	3158525	975342	11.143	9.464
30) L6 AR-1254-5	7.761	6.652	1943935	2049257	7.295	14.852 #
31) L7 AR-1260-1	7.221	6.140	1827255	826995	6.987	7.827
32) L7 AR-1260-2	7.469	6.325	6247290	1281009	19.186	10.234 #
33) L7 AR-1260-3	7.839	6.482	2576465	850092	10.393	7.198 #
34) L7 AR-1260-4	8.060	6.947	278775	734430	1.144	8.230 #
35) L7 AR-1260-5	8.383	7.186	2257668	847679	4.157	4.092
36) L8 AR-1262-1	7.761	6.652	1943935	2049257	8.443	26.727 #
37) L8 AR-1262-2	8.383	6.947	2257668	734430	3.478	6.232 #
38) L8 AR-1262-3	8.698	7.472	3385429	1308165	7.897	14.478 #
39) L8 AR-1262-4	8.794	7.533	4246418	1290466	12.637	7.724 #
40) L8 AR-1262-5	9.447	8.023	1478174	451594	6.233	6.260
41) L9 AR-1268-1	8.698	7.472	3385429	1308165	4.353	5.082

Data Path : Z:\pestpcbsrv\HPCHEM1\ECD_0\Data\P0050824\
 Data File : P0103489.D
 Signal(s) : Signal #1: ECD1A.ch Signal #2: ECD2B.ch
 Acq On : 08 May 2024 22:24
 Operator : YP/AJ
 Sample : P2421-05 10X
 Misc :
 ALS Vial : 28 Sample Multiplier: 1

Instrument :
 ECD_0
 ClientSampleId :
 CABLE-5A

Integration File signal 1: autoint1.e
 Integration File signal 2: autoint2.e
 Quant Time: May 09 01:41:41 2024
 Quant Method : Z:\pestpcbsrv\HPCHEM1\ECD_0\methods\P0050624.M
 Quant Title : GC EXTRACTABLES
 QLast Update : Tue May 07 04:55:35 2024
 Response via : Initial Calibration
 Integrator: ChemStation

Volume Inj. : 2 µl
 Signal #1 Phase : ZB-MR1 Signal #2 Phase: ZB-MR2
 Signal #1 Info : 30Mx0.32mmx 0.50µ Signal #2 Info : 30M x 0.32mm x 0.25µm

	Compound	RT#1	RT#2	Resp#1	Resp#2	ng/ml	ng/ml
42)	L9 AR-1268-2	8.794	7.533	4246418	1290466	5.941	5.168
43)	L9 AR-1268-3	9.023	7.739	2158301	815856	3.428	4.058
44)	L9 AR-1268-4	9.447	8.308	1478174	1775232	5.830	3.276 #
45)	L9 AR-1268-5	9.869	8.557	6052065	2270025	3.128	9.753 #

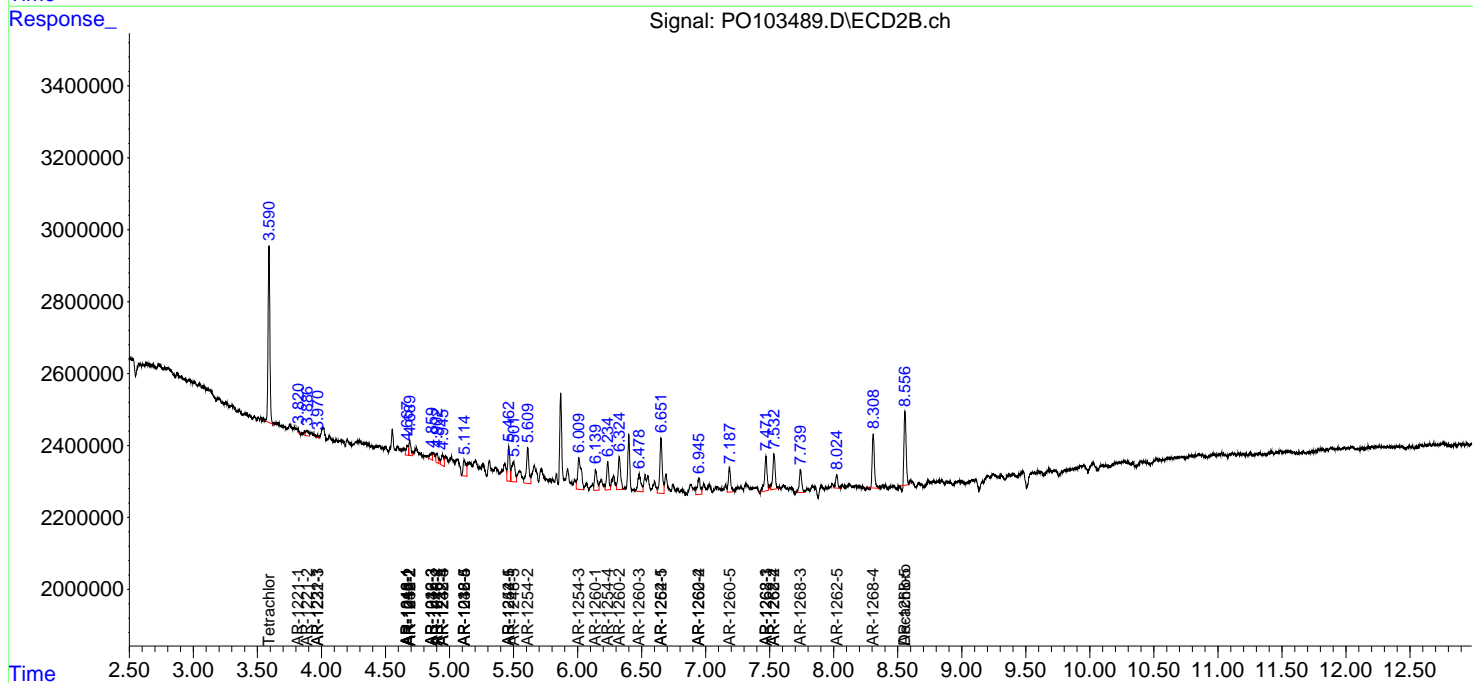
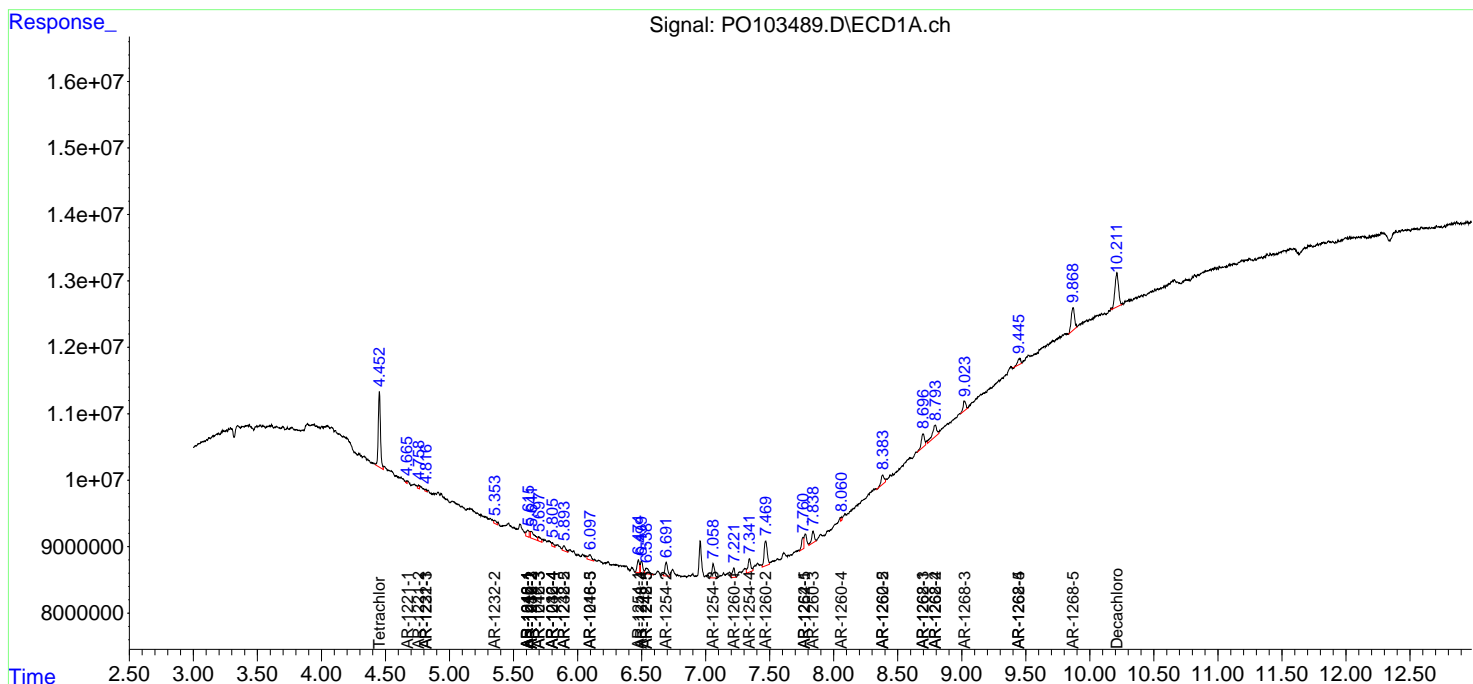
(f)=RT Delta > 1/2 Window (#)=Amounts differ by > 25% (m)=manual int.

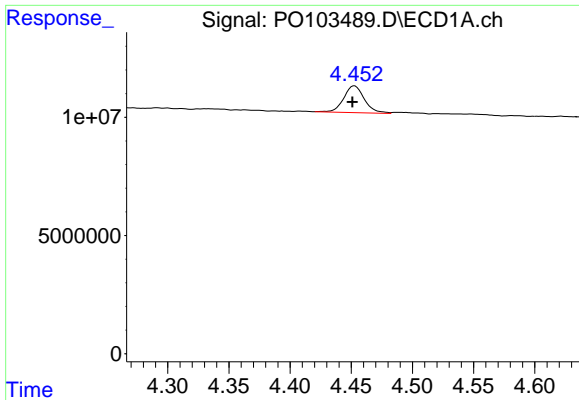
Data Path : Z:\pestpcbsrv\HPCHEM1\ECD_O\Data\PO050824\
 Data File : PO103489.D
 Signal(s) : Signal #1: ECD1A.ch Signal #2: ECD2B.ch
 Acq On : 08 May 2024 22:24
 Operator : YP/AJ
 Sample : P2421-05 10X
 Misc :
 ALS Vial : 28 Sample Multiplier: 1

Instrument :
 ECD_O
 ClientSampleId :
 CABLE-5A

Integration File signal 1: autoint1.e
 Integration File signal 2: autoint2.e
 Quant Time: May 09 01:41:41 2024
 Quant Method : Z:\pestpcbsrv\HPCHEM1\ECD_O\methods\PO050624.M
 Quant Title : GC EXTRACTABLES
 QLast Update : Tue May 07 04:55:35 2024
 Response via : Initial Calibration
 Integrator: ChemStation

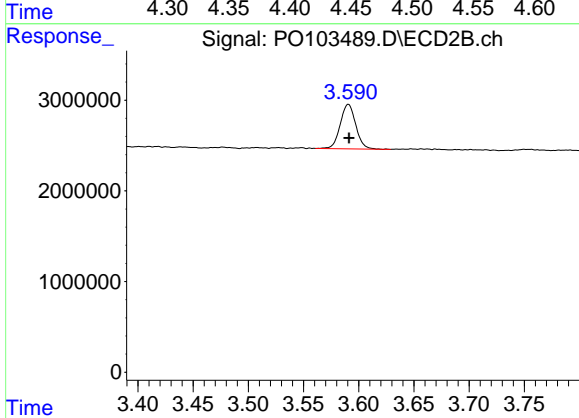
Volume Inj. : 2 µl
 Signal #1 Phase : ZB-MR1 Signal #2 Phase: ZB-MR2
 Signal #1 Info : 30Mx0.32mmx 0.50µ Signal #2 Info : 30M x 0.32mm x 0.25µm



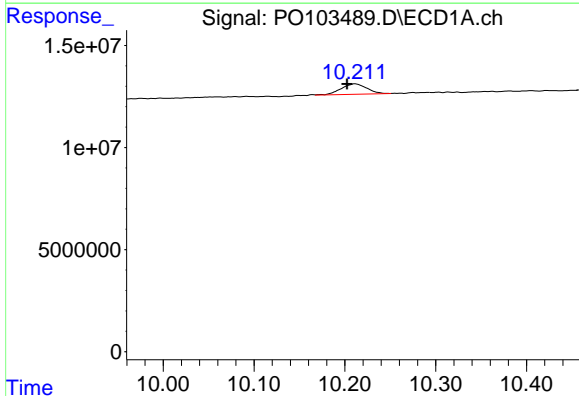


#1 Tetrachloro-m-xylene
 R.T.: 4.453 min
 Delta R.T.: 0.002 min
 Response: 13407119
 Conc: 1.74 ng/ml

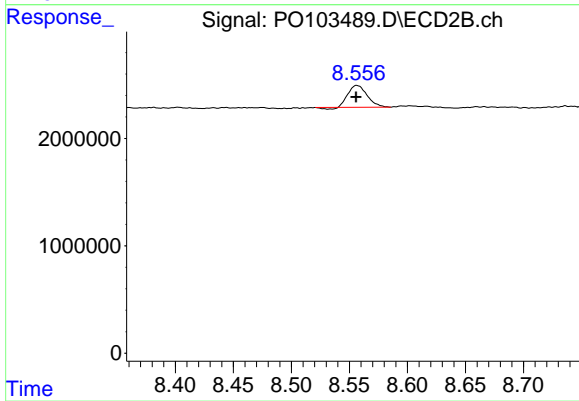
Instrument :
 ECD_O
 ClientSampleId :
 CABLE-5A



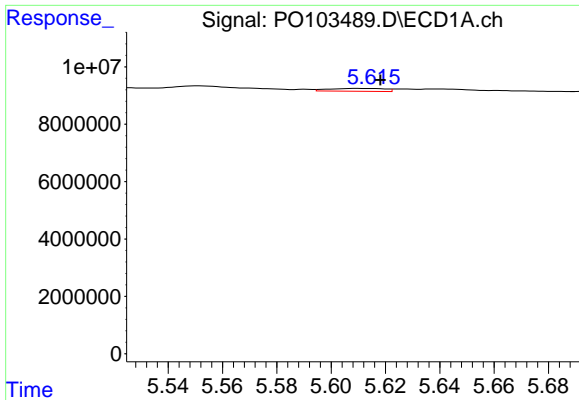
#1 Tetrachloro-m-xylene
 R.T.: 3.591 min
 Delta R.T.: 0.000 min
 Response: 4810722
 Conc: 1.91 ng/ml



#2 Decachlorobiphenyl
 R.T.: 10.212 min
 Delta R.T.: 0.009 min
 Response: 10070764
 Conc: 2.12 ng/ml



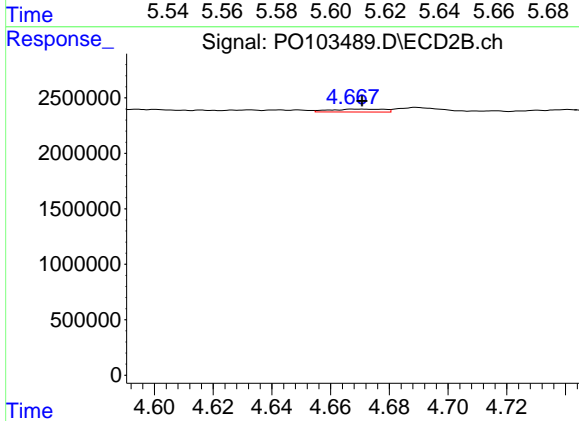
#2 Decachlorobiphenyl
 R.T.: 8.557 min
 Delta R.T.: 0.000 min
 Response: 2270025
 Conc: 1.74 ng/ml



#3 AR-1016-1

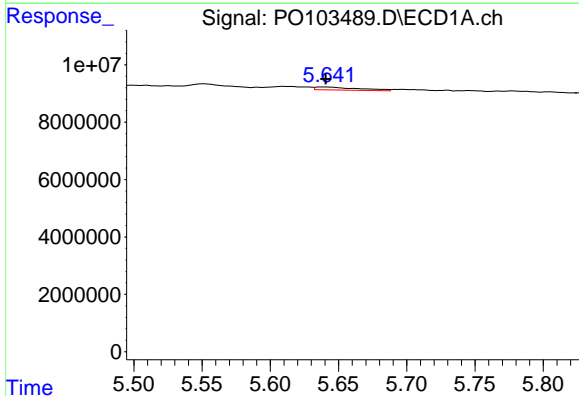
R.T.: 5.610 min
 Delta R.T.: -0.008 min
 Response: 1392648
 Conc: 5.73 ng/ml

Instrument :
 ECD_O
 ClientSampleId :
 CABLE-5A



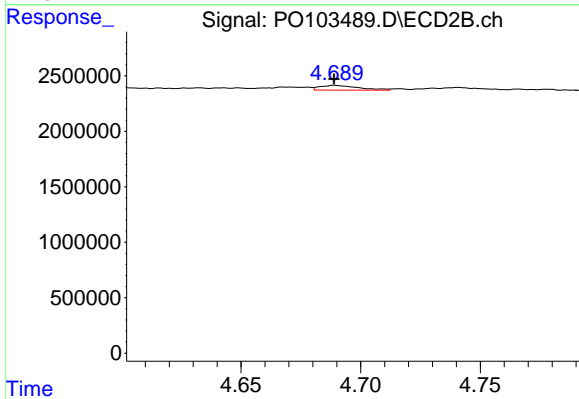
#3 AR-1016-1

R.T.: 4.669 min
 Delta R.T.: -0.002 min
 Response: 327243
 Conc: 4.17 ng/ml



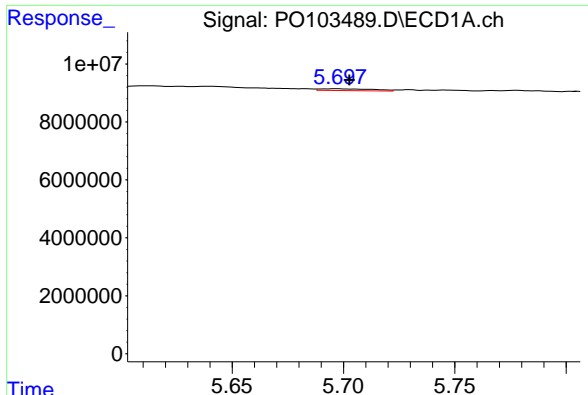
#4 AR-1016-2

R.T.: 5.639 min
 Delta R.T.: -0.002 min
 Response: 2333934
 Conc: 6.74 ng/ml



#4 AR-1016-2

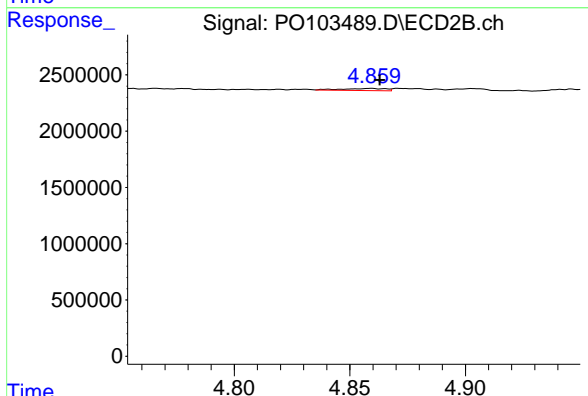
R.T.: 4.689 min
 Delta R.T.: 0.000 min
 Response: 469942
 Conc: 3.92 ng/ml



#5 AR-1016-3

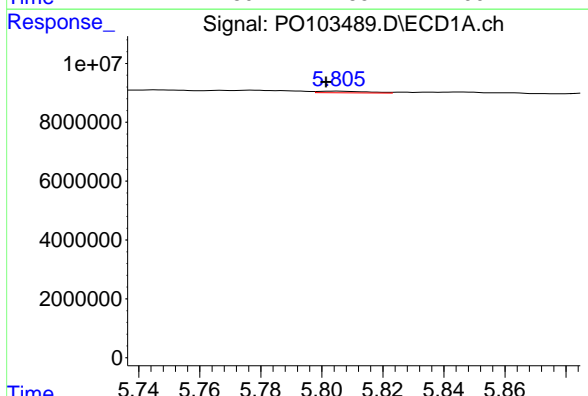
R.T.: 5.697 min
 Delta R.T.: -0.006 min
 Response: 1053309
 Conc: 5.08 ng/ml

Instrument :
 ECD_O
 ClientSampleId :
 CABLE-5A



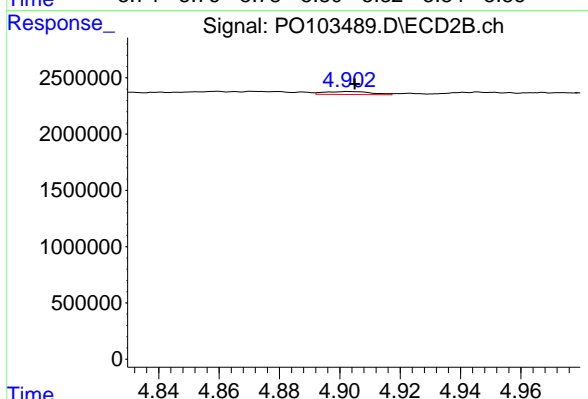
#5 AR-1016-3

R.T.: 4.859 min
 Delta R.T.: -0.004 min
 Response: 251136
 Conc: 3.76 ng/ml



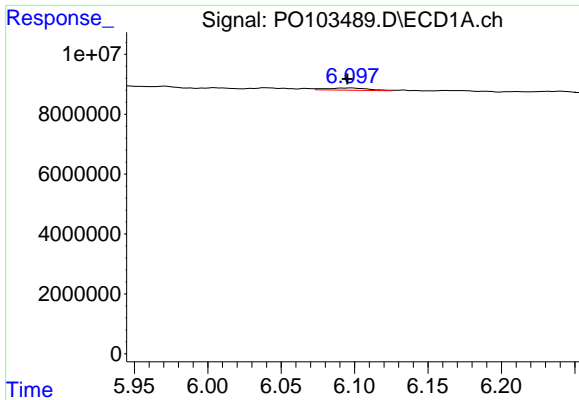
#6 AR-1016-4

R.T.: 5.805 min
 Delta R.T.: 0.003 min
 Response: 620314
 Conc: 3.64 ng/ml



#6 AR-1016-4

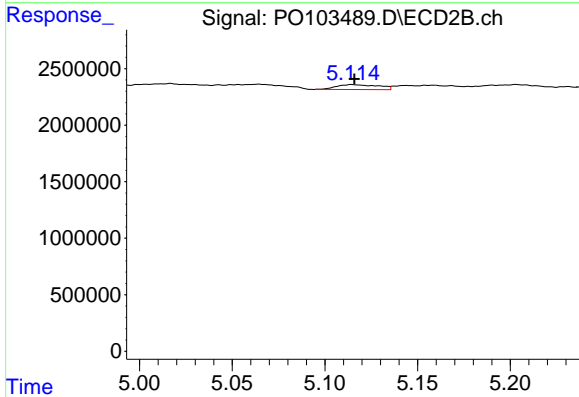
R.T.: 4.903 min
 Delta R.T.: -0.002 min
 Response: 289833
 Conc: 6.31 ng/ml



#7 AR-1016-5

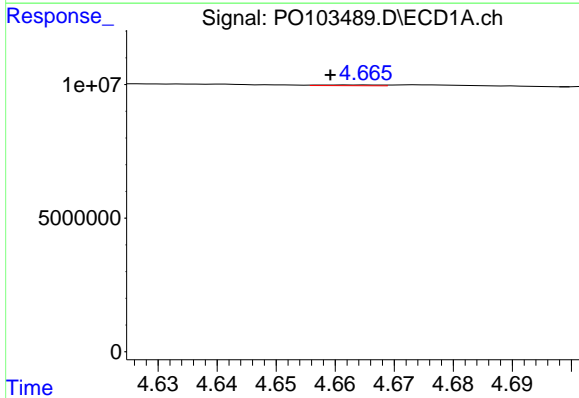
R.T.: 6.098 min
 Delta R.T.: 0.003 min
 Response: 1482686
 Conc: 9.36 ng/ml

Instrument :
 ECD_O
 ClientSampleId :
 CABLE-5A



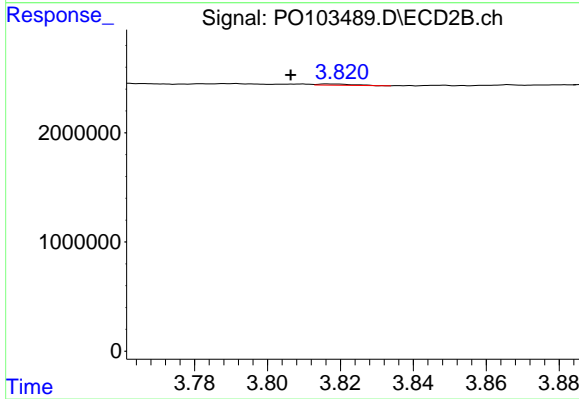
#7 AR-1016-5

R.T.: 5.115 min
 Delta R.T.: -0.001 min
 Response: 690431
 Conc: 11.06 ng/ml



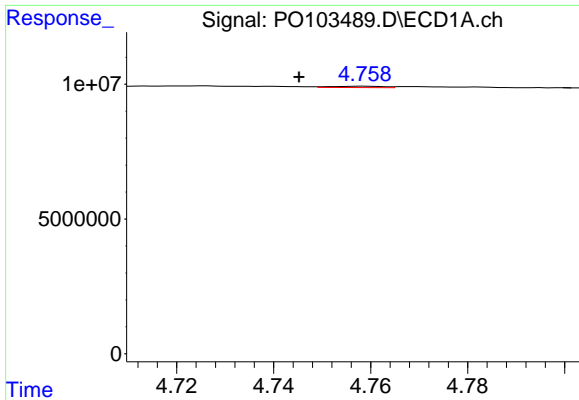
#8 AR-1221-1

R.T.: 4.665 min
 Delta R.T.: 0.006 min
 Response: 192136
 Conc: 2.16 ng/ml



#8 AR-1221-1

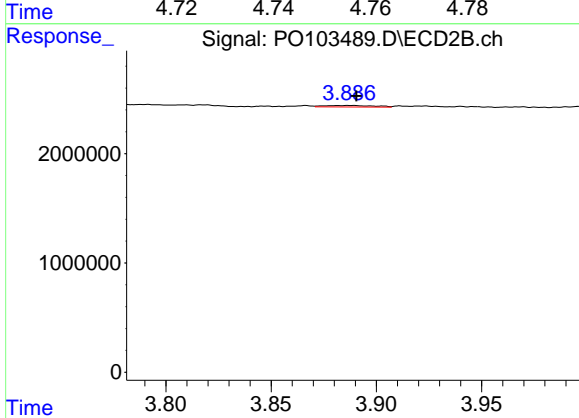
R.T.: 3.817 min
 Delta R.T.: 0.011 min
 Response: 76554
 Conc: 2.49 ng/ml



#9 AR-1221-2

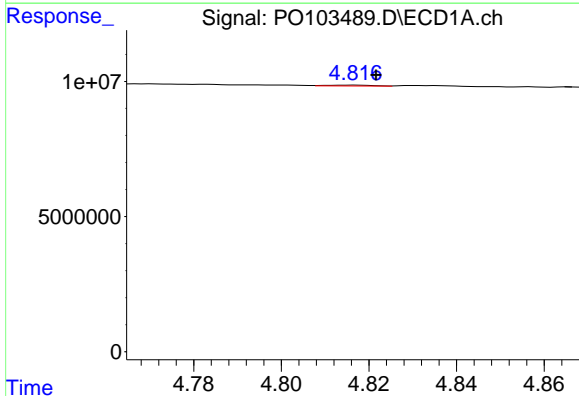
R.T.: 4.759 min
 Delta R.T.: 0.014 min
 Response: 387344
 Conc: 5.75 ng/ml

Instrument :
 ECD_O
 ClientSampleId :
 CABLE-5A



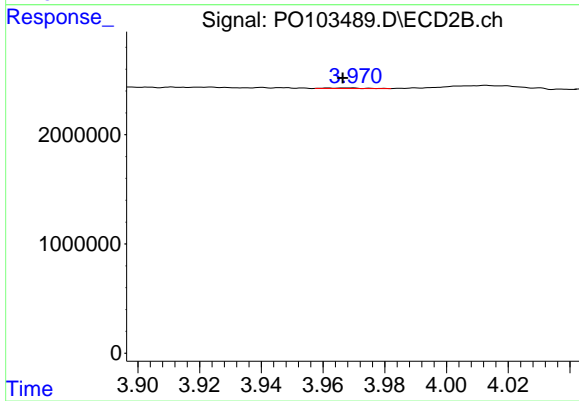
#9 AR-1221-2

R.T.: 3.887 min
 Delta R.T.: -0.003 min
 Response: 230223
 Conc: 9.47 ng/ml



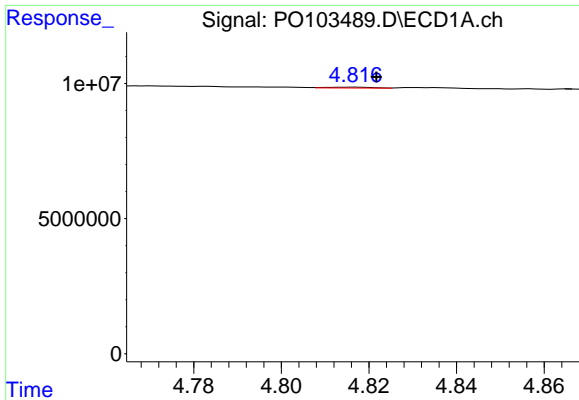
#10 AR-1221-3

R.T.: 4.817 min
 Delta R.T.: -0.005 min
 Response: 227599
 Conc: 1.13 ng/ml



#10 AR-1221-3

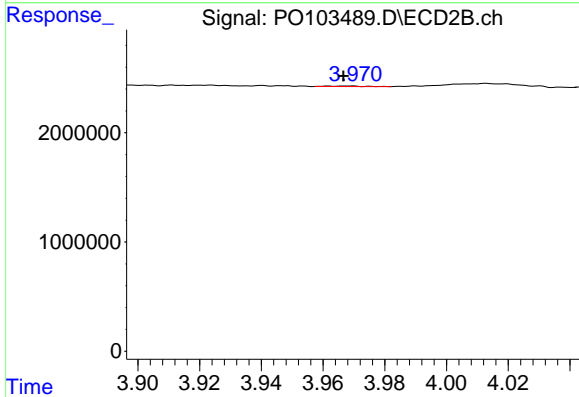
R.T.: 3.962 min
 Delta R.T.: -0.005 min
 Response: 47773
 Conc: 0.67 ng/ml



#11 AR-1232-1

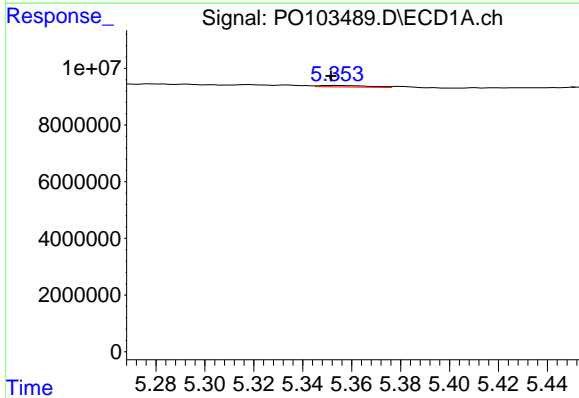
R.T.: 4.817 min
 Delta R.T.: -0.005 min
 Response: 227599
 Conc: 1.37 ng/ml

Instrument :
 ECD_O
 ClientSampleId :
 CABLE-5A



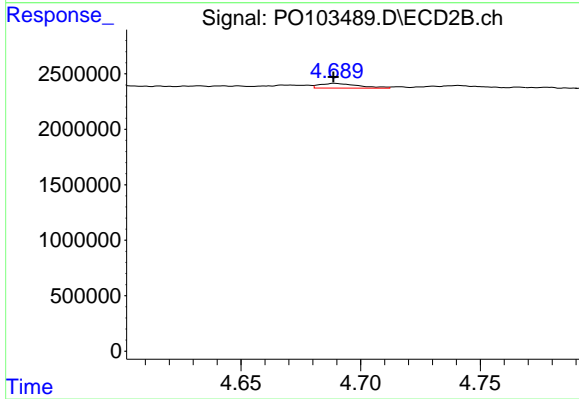
#11 AR-1232-1

R.T.: 3.962 min
 Delta R.T.: -0.005 min
 Response: 47773
 Conc: 0.80 ng/ml



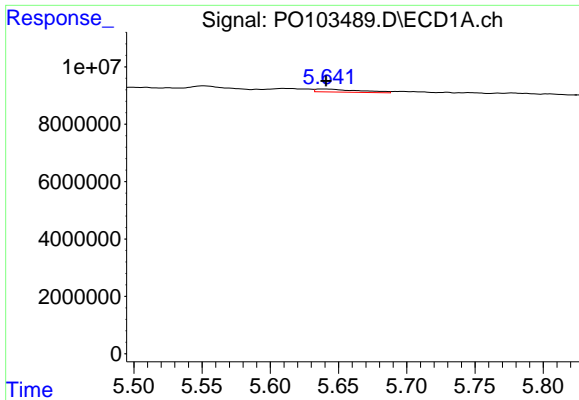
#12 AR-1232-2

R.T.: 5.353 min
 Delta R.T.: 0.000 min
 Response: 695587
 Conc: 8.15 ng/ml



#12 AR-1232-2

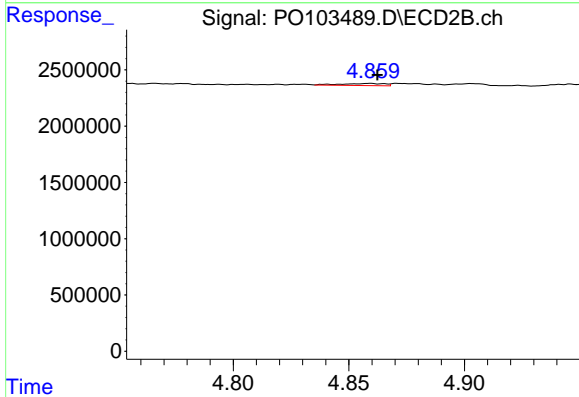
R.T.: 4.689 min
 Delta R.T.: 0.000 min
 Response: 469942
 Conc: 8.20 ng/ml



#13 AR-1232-3

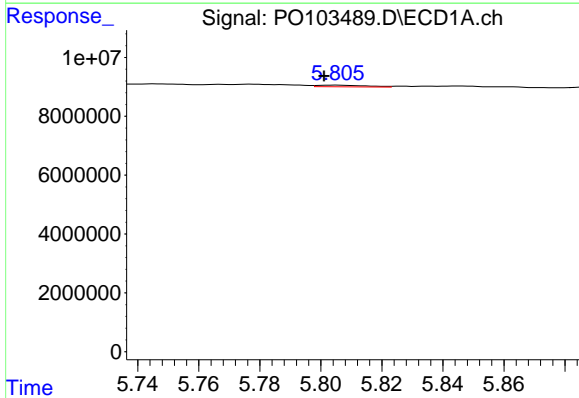
R.T.: 5.639 min
 Delta R.T.: -0.002 min
 Response: 2333934
 Conc: 14.25 ng/ml

Instrument :
 ECD_O
 ClientSampleId :
 CABLE-5A



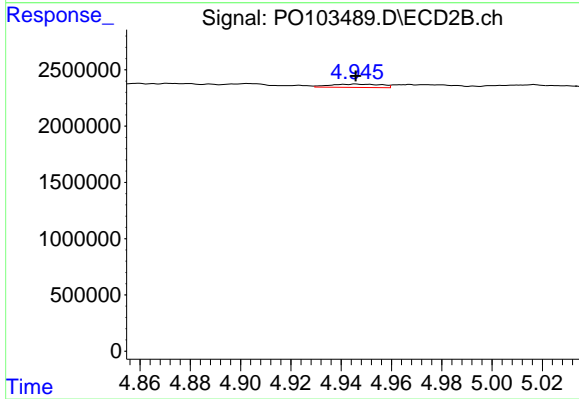
#13 AR-1232-3

R.T.: 4.859 min
 Delta R.T.: -0.003 min
 Response: 251136
 Conc: 8.11 ng/ml



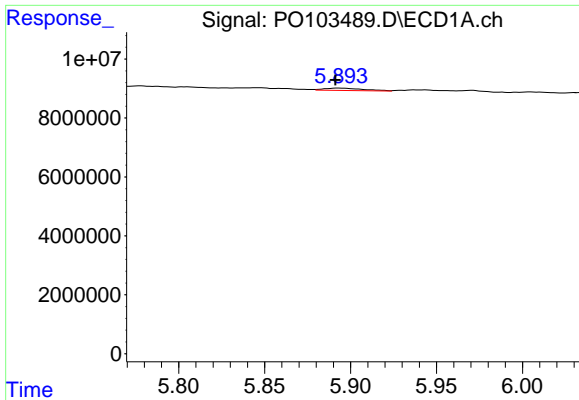
#14 AR-1232-4

R.T.: 5.805 min
 Delta R.T.: 0.004 min
 Response: 620314
 Conc: 7.86 ng/ml



#14 AR-1232-4

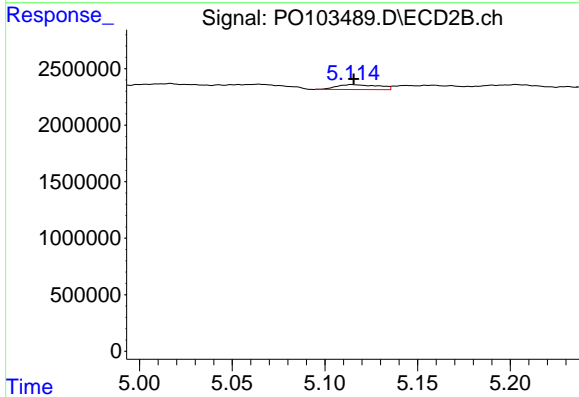
R.T.: 4.946 min
 Delta R.T.: 0.000 min
 Response: 411035
 Conc: 16.00 ng/ml



#15 AR-1232-5

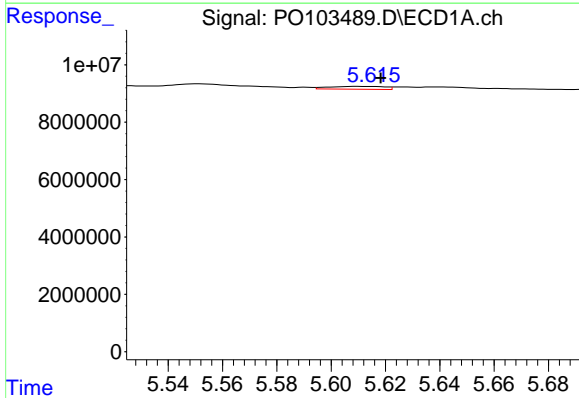
R.T.: 5.894 min
 Delta R.T.: 0.002 min
 Response: 1208275
 Conc: 21.37 ng/ml

Instrument :
 ECD_O
 ClientSampleId :
 CABLE-5A



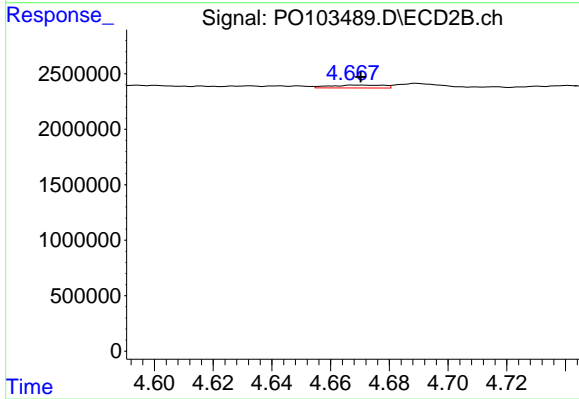
#15 AR-1232-5

R.T.: 5.115 min
 Delta R.T.: 0.000 min
 Response: 690431
 Conc: 24.84 ng/ml



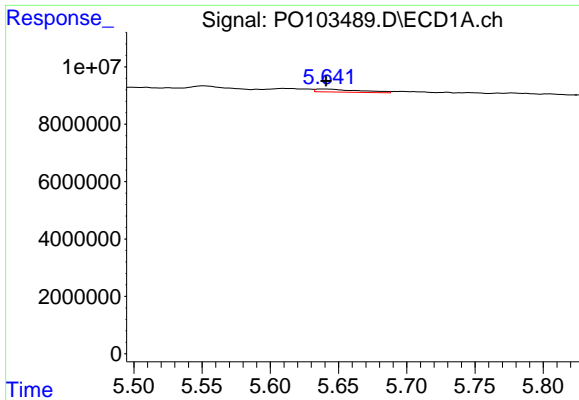
#16 AR-1242-1

R.T.: 5.610 min
 Delta R.T.: -0.008 min
 Response: 1392648
 Conc: 6.81 ng/ml



#16 AR-1242-1

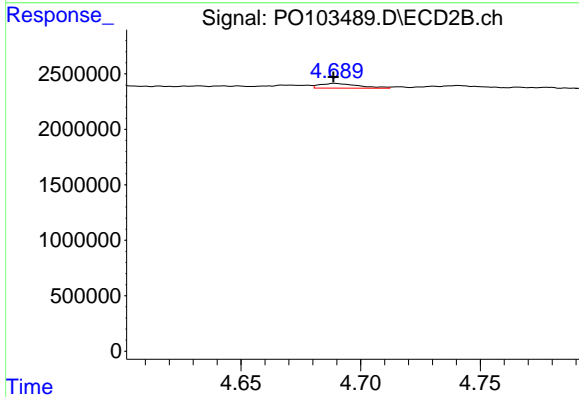
R.T.: 4.669 min
 Delta R.T.: -0.001 min
 Response: 327243
 Conc: 4.95 ng/ml



#17 AR-1242-2

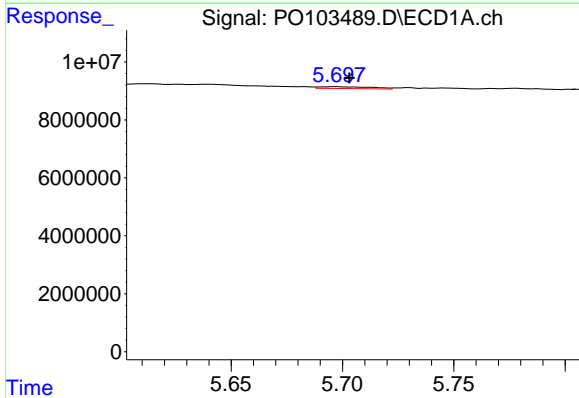
R.T.: 5.639 min
 Delta R.T.: -0.002 min
 Response: 2333934
 Conc: 8.01 ng/ml

Instrument :
 ECD_O
 ClientSampleId :
 CABLE-5A



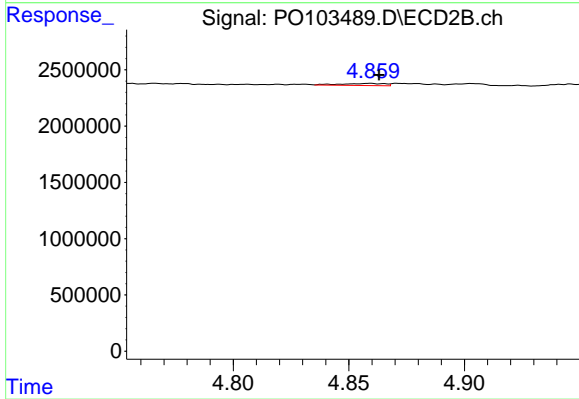
#17 AR-1242-2

R.T.: 4.689 min
 Delta R.T.: 0.000 min
 Response: 469942
 Conc: 4.72 ng/ml



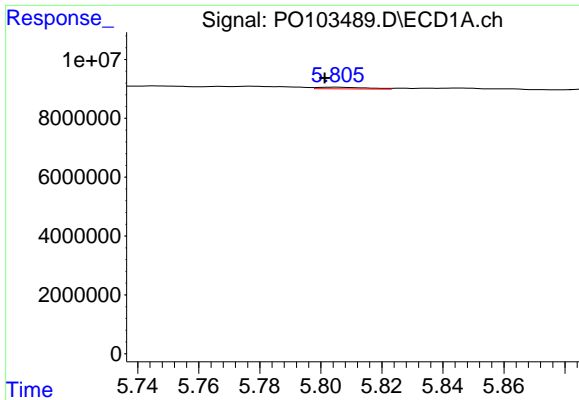
#18 AR-1242-3

R.T.: 5.697 min
 Delta R.T.: -0.006 min
 Response: 1053309
 Conc: 6.08 ng/ml



#18 AR-1242-3

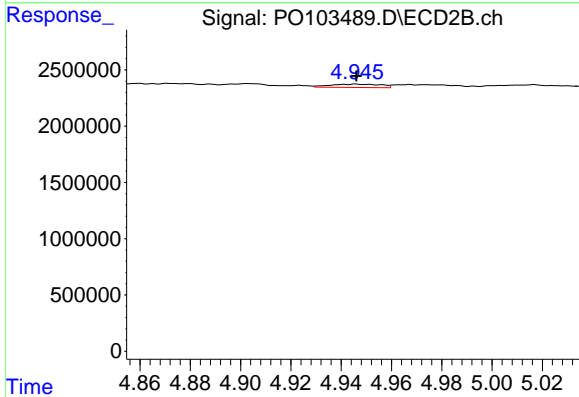
R.T.: 4.859 min
 Delta R.T.: -0.004 min
 Response: 251136
 Conc: 4.59 ng/ml



#19 AR-1242-4

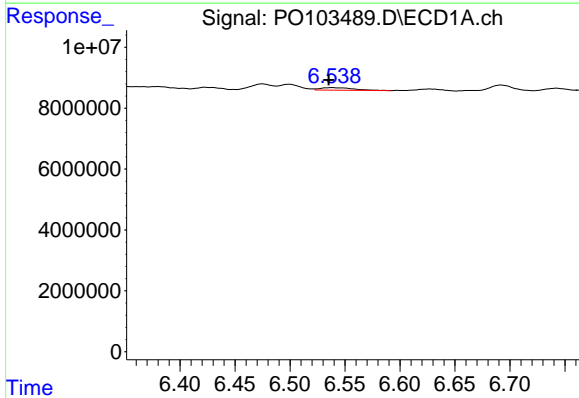
R.T.: 5.805 min
 Delta R.T.: 0.003 min
 Response: 620314
 Conc: 4.32 ng/ml

Instrument :
 ECD_O
 ClientSampleId :
 CABLE-5A



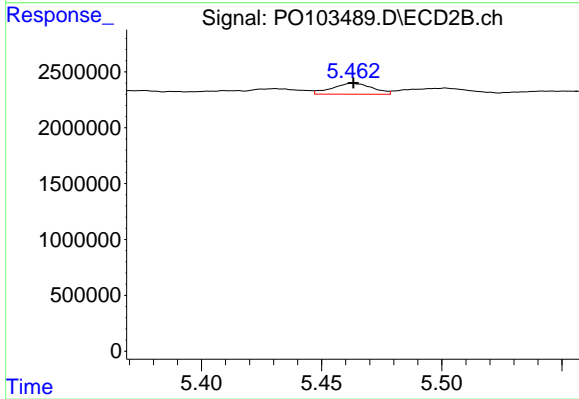
#19 AR-1242-4

R.T.: 4.946 min
 Delta R.T.: 0.000 min
 Response: 411035
 Conc: 8.27 ng/ml



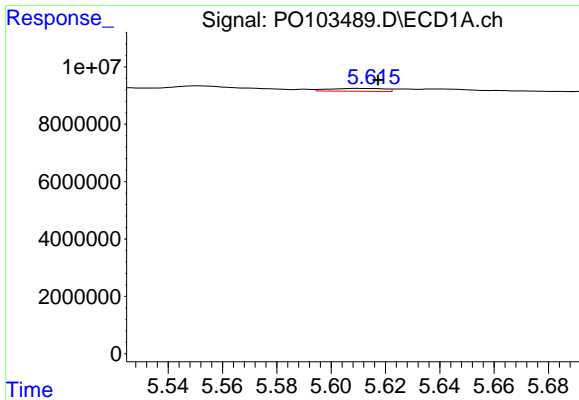
#20 AR-1242-5

R.T.: 6.538 min
 Delta R.T.: 0.003 min
 Response: 1814117
 Conc: 12.67 ng/ml



#20 AR-1242-5

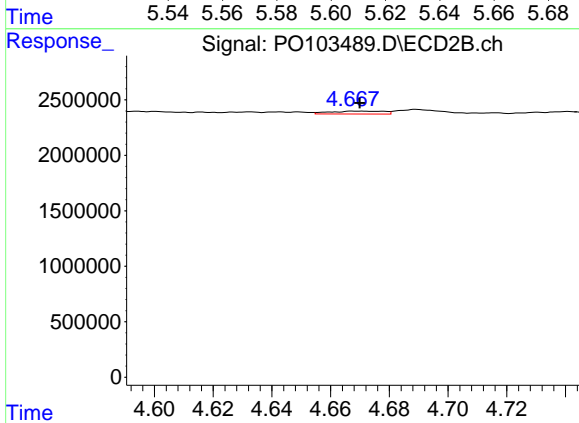
R.T.: 5.463 min
 Delta R.T.: 0.000 min
 Response: 1131732
 Conc: 18.51 ng/ml



#21 AR-1248-1

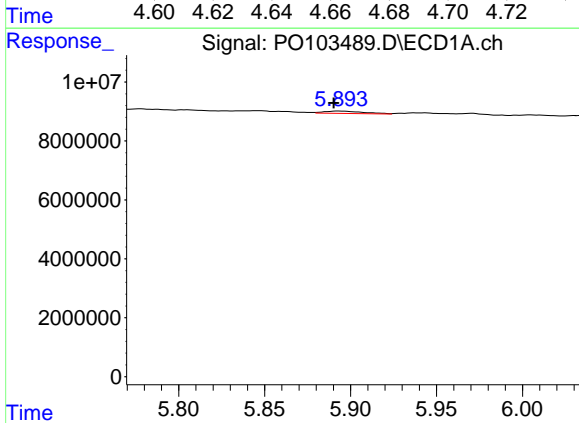
R.T.: 5.610 min
 Delta R.T.: -0.007 min
 Response: 1392648
 Conc: 9.07 ng/ml

Instrument :
 ECD_O
 ClientSampleId :
 CABLE-5A



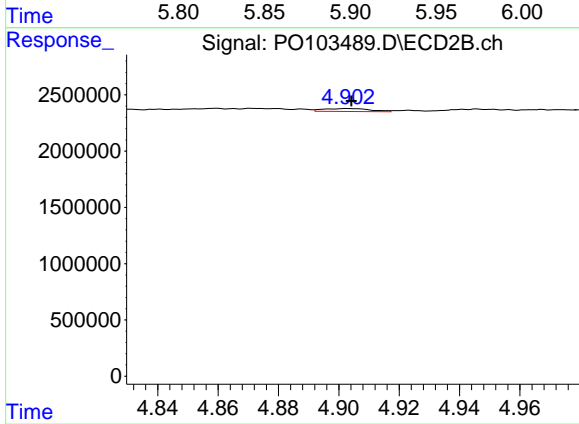
#21 AR-1248-1

R.T.: 4.669 min
 Delta R.T.: 0.000 min
 Response: 327243
 Conc: 6.49 ng/ml



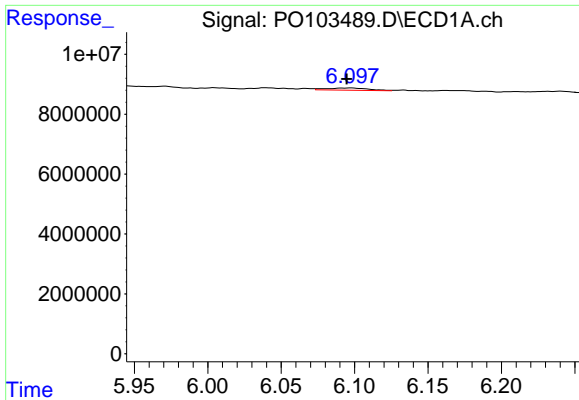
#22 AR-1248-2

R.T.: 5.894 min
 Delta R.T.: 0.003 min
 Response: 1208275
 Conc: 5.87 ng/ml



#22 AR-1248-2

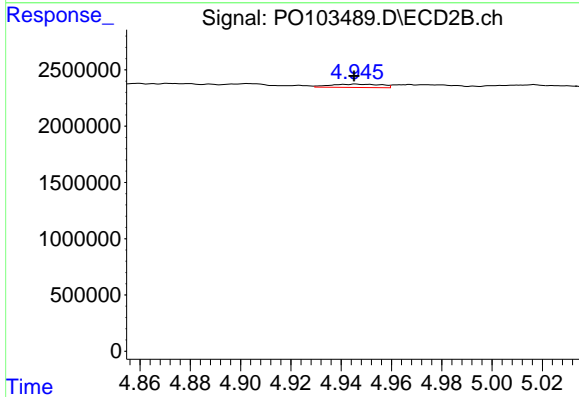
R.T.: 4.903 min
 Delta R.T.: -0.001 min
 Response: 289833
 Conc: 4.40 ng/ml



#23 AR-1248-3

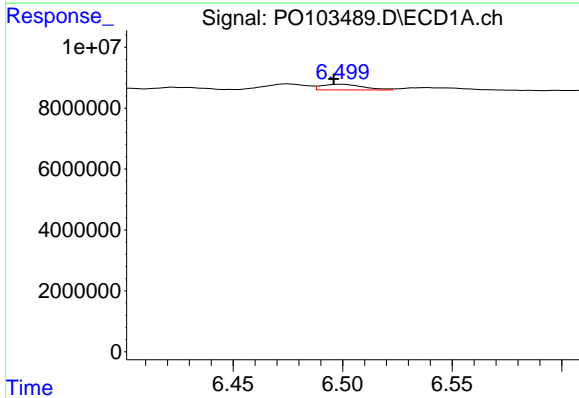
R.T.: 6.098 min
 Delta R.T.: 0.003 min
 Response: 1482686
 Conc: 6.58 ng/ml

Instrument :
 ECD_O
 ClientSampleId :
 CABLE-5A



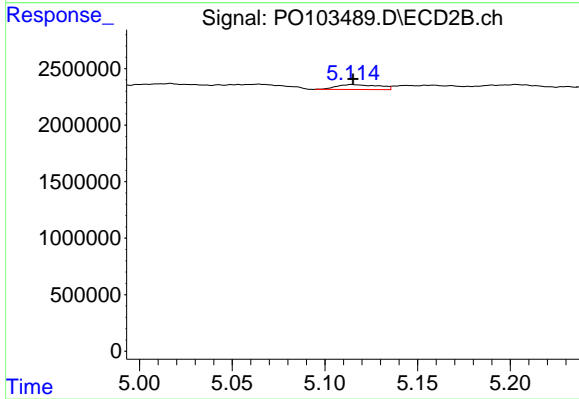
#23 AR-1248-3

R.T.: 4.946 min
 Delta R.T.: 0.000 min
 Response: 411035
 Conc: 5.68 ng/ml



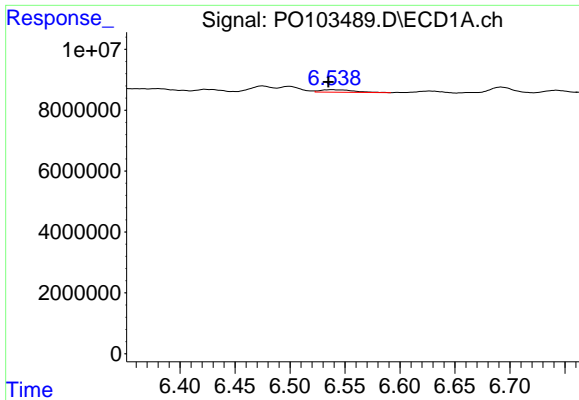
#24 AR-1248-4

R.T.: 6.499 min
 Delta R.T.: 0.003 min
 Response: 2444097
 Conc: 9.50 ng/ml



#24 AR-1248-4

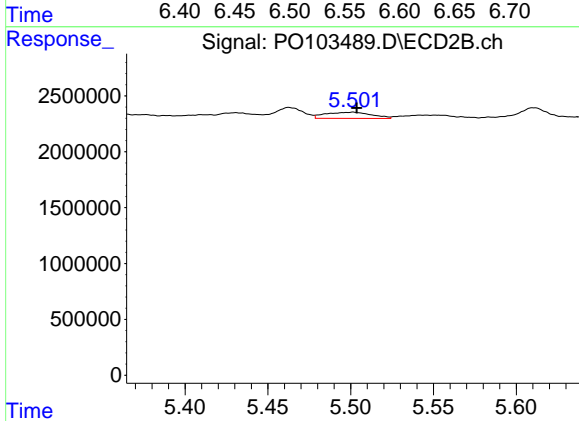
R.T.: 5.115 min
 Delta R.T.: 0.000 min
 Response: 690431
 Conc: 8.17 ng/ml



#25 AR-1248-5

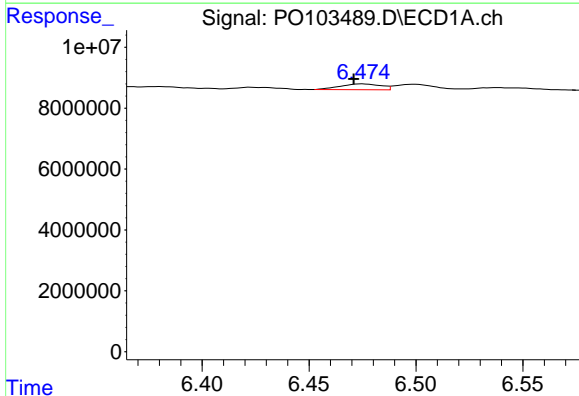
R.T.: 6.538 min
 Delta R.T.: 0.004 min
 Response: 1814117
 Conc: 7.45 ng/ml

Instrument :
 ECD_O
 ClientSampleId :
 CABLE-5A



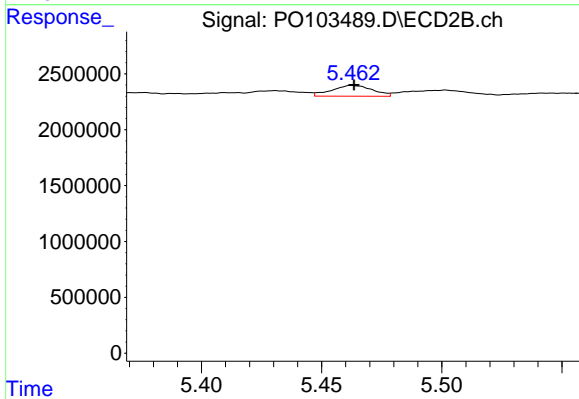
#25 AR-1248-5

R.T.: 5.501 min
 Delta R.T.: -0.002 min
 Response: 1056039
 Conc: 12.03 ng/ml



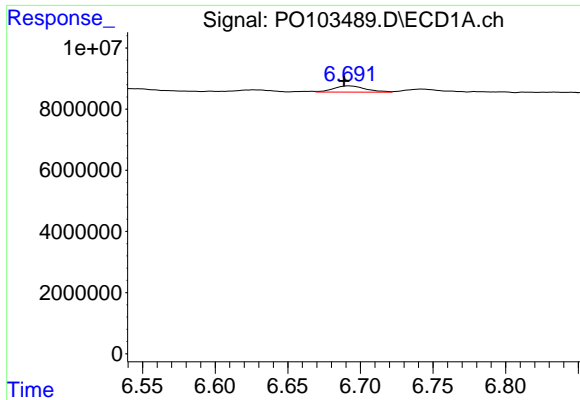
#26 AR-1254-1

R.T.: 6.475 min
 Delta R.T.: 0.004 min
 Response: 2495258
 Conc: 10.13 ng/ml



#26 AR-1254-1

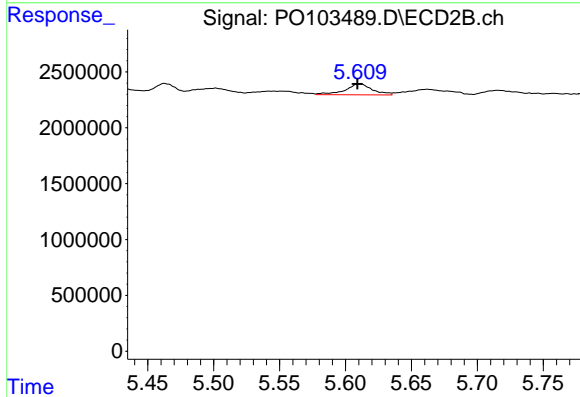
R.T.: 5.463 min
 Delta R.T.: 0.000 min
 Response: 1131732
 Conc: 9.29 ng/ml



#27 AR-1254-2

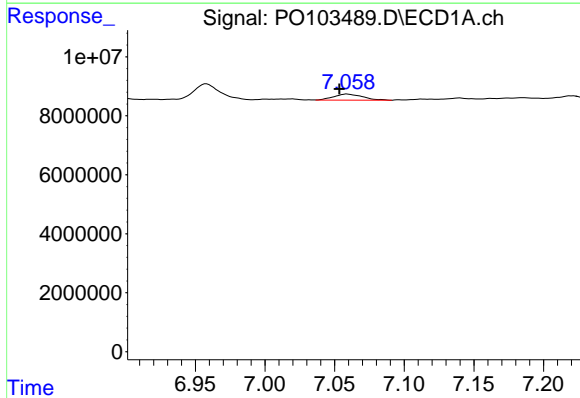
R.T.: 6.692 min
 Delta R.T.: 0.003 min
 Response: 3109140
 Conc: 8.59 ng/ml

Instrument :
 ECD_O
 ClientSampleId :
 CABLE-5A



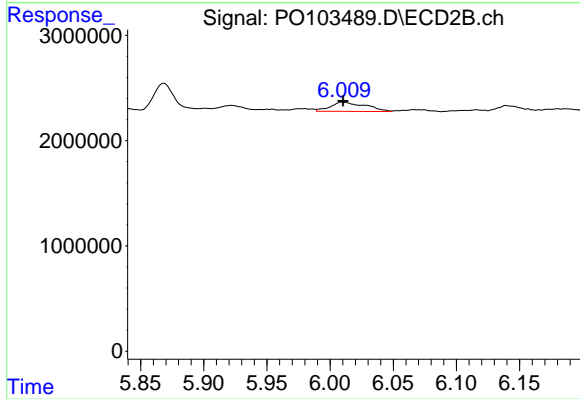
#27 AR-1254-2

R.T.: 5.611 min
 Delta R.T.: 0.002 min
 Response: 1424465
 Conc: 13.49 ng/ml



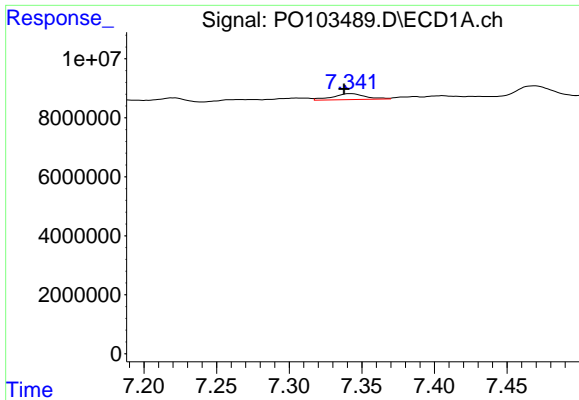
#28 AR-1254-3

R.T.: 7.059 min
 Delta R.T.: 0.005 min
 Response: 2997073
 Conc: 8.23 ng/ml



#28 AR-1254-3

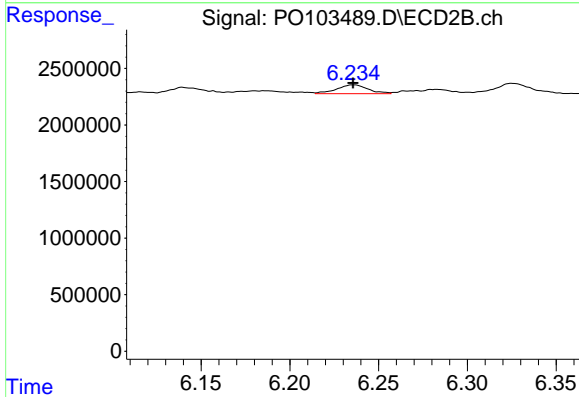
R.T.: 6.010 min
 Delta R.T.: 0.000 min
 Response: 1704078
 Conc: 9.92 ng/ml



#29 AR-1254-4

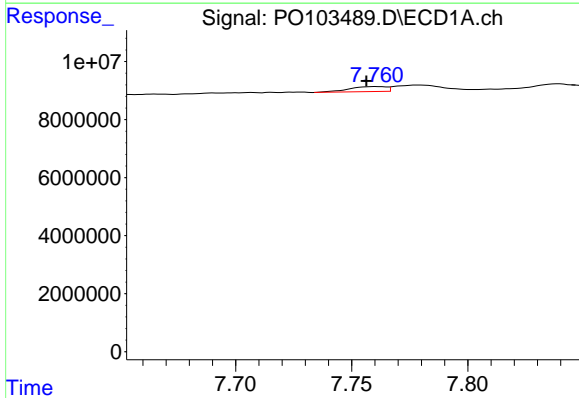
R.T.: 7.342 min
 Delta R.T.: 0.005 min
 Response: 3158525
 Conc: 11.14 ng/ml

Instrument :
 ECD_O
 ClientSampleId :
 CABLE-5A



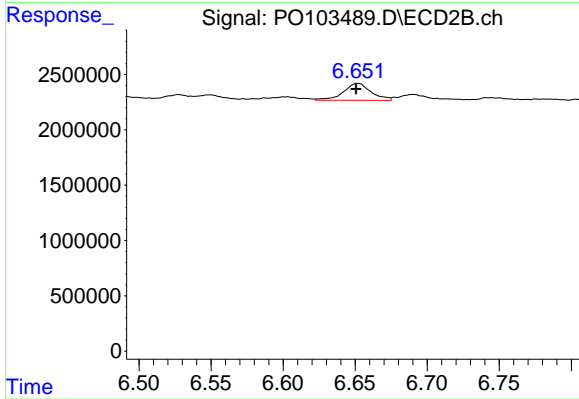
#29 AR-1254-4

R.T.: 6.236 min
 Delta R.T.: 0.000 min
 Response: 975342
 Conc: 9.46 ng/ml



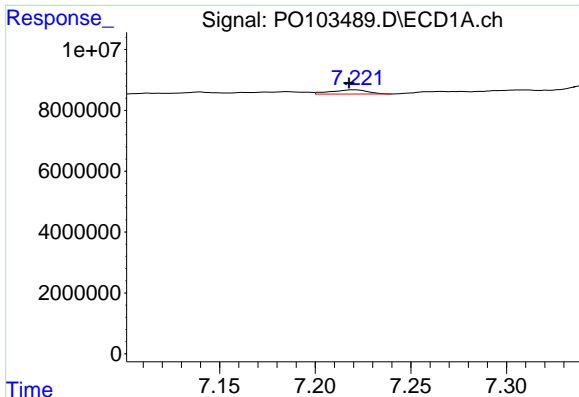
#30 AR-1254-5

R.T.: 7.761 min
 Delta R.T.: 0.004 min
 Response: 1943935
 Conc: 7.29 ng/ml



#30 AR-1254-5

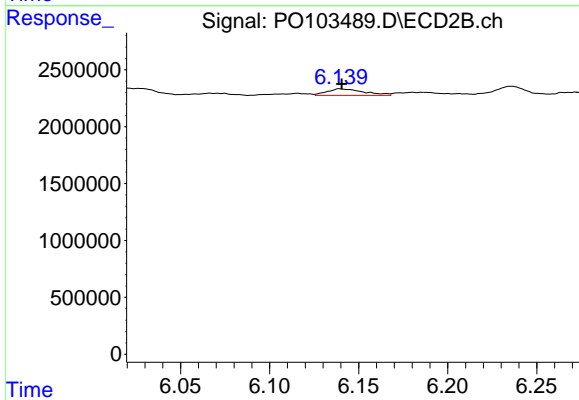
R.T.: 6.652 min
 Delta R.T.: 0.001 min
 Response: 2049257
 Conc: 14.85 ng/ml



#31 AR-1260-1

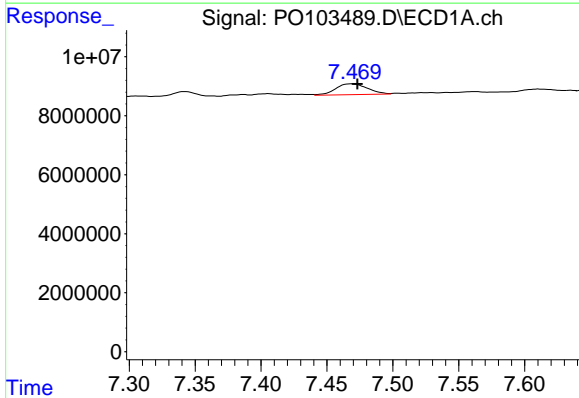
R.T.: 7.221 min
 Delta R.T.: 0.003 min
 Response: 1827255
 Conc: 6.99 ng/ml

Instrument :
 ECD_O
 ClientSampleId :
 CABLE-5A



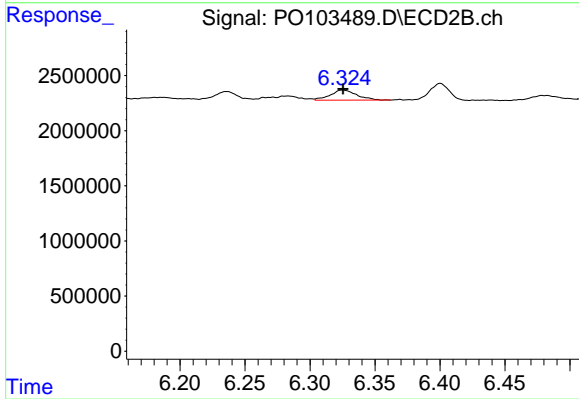
#31 AR-1260-1

R.T.: 6.140 min
 Delta R.T.: 0.000 min
 Response: 826995
 Conc: 7.83 ng/ml



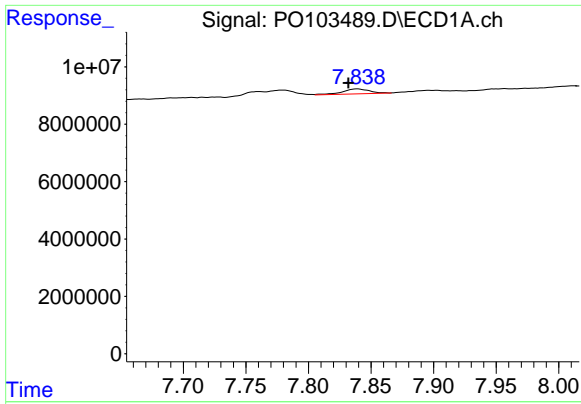
#32 AR-1260-2

R.T.: 7.469 min
 Delta R.T.: -0.004 min
 Response: 6247290
 Conc: 19.19 ng/ml



#32 AR-1260-2

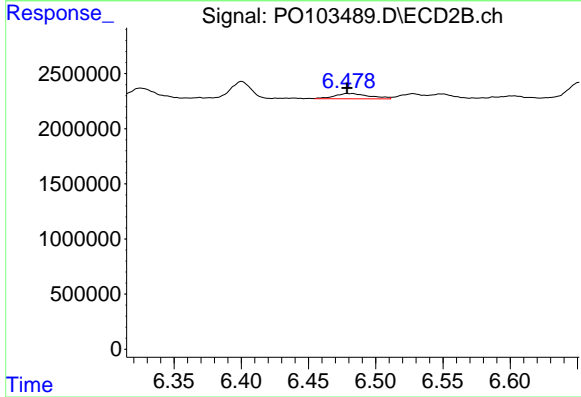
R.T.: 6.325 min
 Delta R.T.: 0.000 min
 Response: 1281009
 Conc: 10.23 ng/ml



#33 AR-1260-3

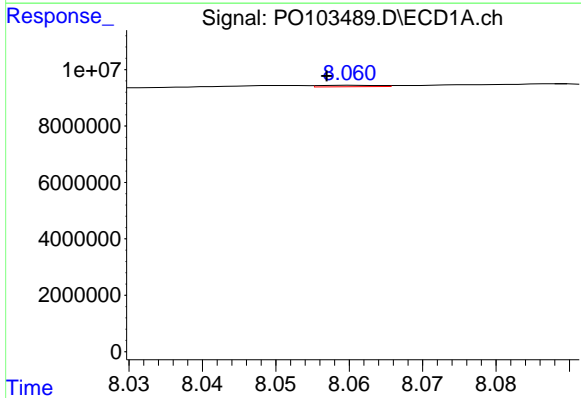
R.T.: 7.839 min
 Delta R.T.: 0.007 min
 Response: 2576465
 Conc: 10.39 ng/ml

Instrument :
 ECD_O
 ClientSampleId :
 CABLE-5A



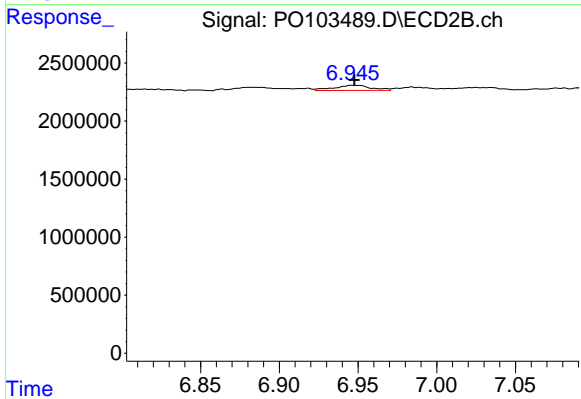
#33 AR-1260-3

R.T.: 6.482 min
 Delta R.T.: 0.003 min
 Response: 850092
 Conc: 7.20 ng/ml



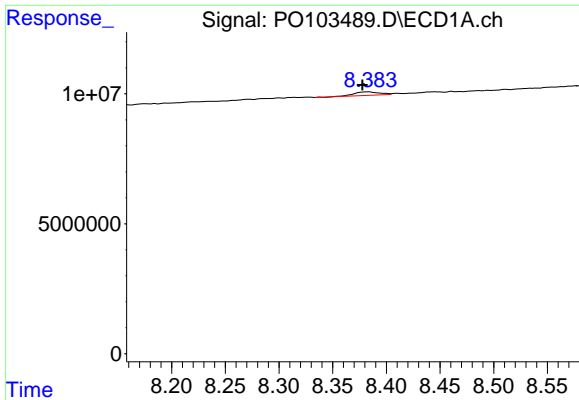
#34 AR-1260-4

R.T.: 8.060 min
 Delta R.T.: 0.003 min
 Response: 278775
 Conc: 1.14 ng/ml



#34 AR-1260-4

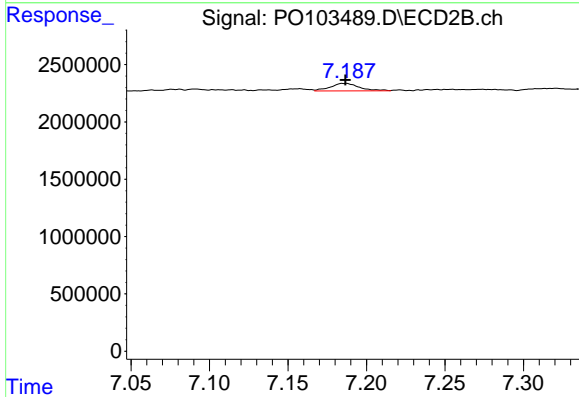
R.T.: 6.947 min
 Delta R.T.: -0.001 min
 Response: 734430
 Conc: 8.23 ng/ml



#35 AR-1260-5

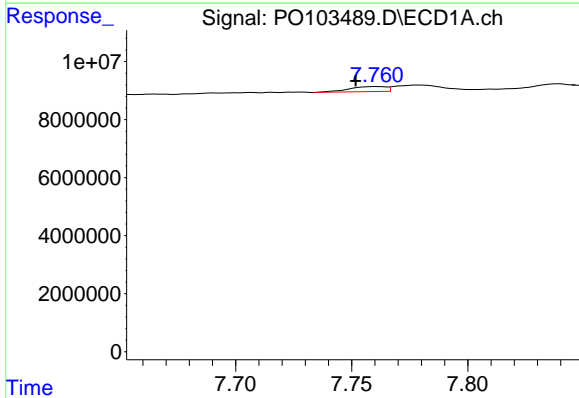
R.T.: 8.383 min
 Delta R.T.: 0.005 min
 Response: 2257668
 Conc: 4.16 ng/ml

Instrument :
 ECD_O
 ClientSampleId :
 CABLE-5A



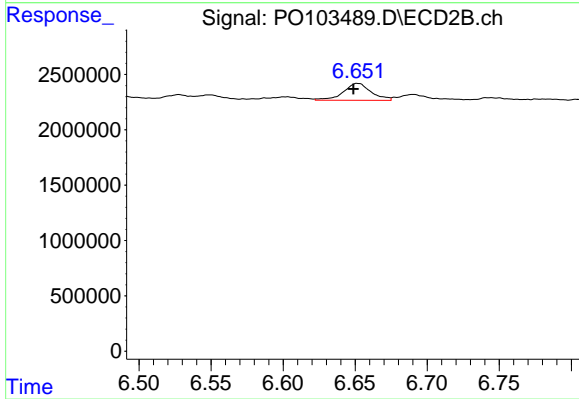
#35 AR-1260-5

R.T.: 7.186 min
 Delta R.T.: 0.000 min
 Response: 847679
 Conc: 4.09 ng/ml



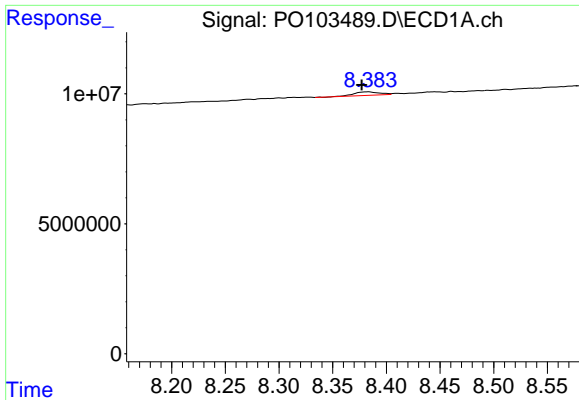
#36 AR-1262-1

R.T.: 7.761 min
 Delta R.T.: 0.009 min
 Response: 1943935
 Conc: 8.44 ng/ml



#36 AR-1262-1

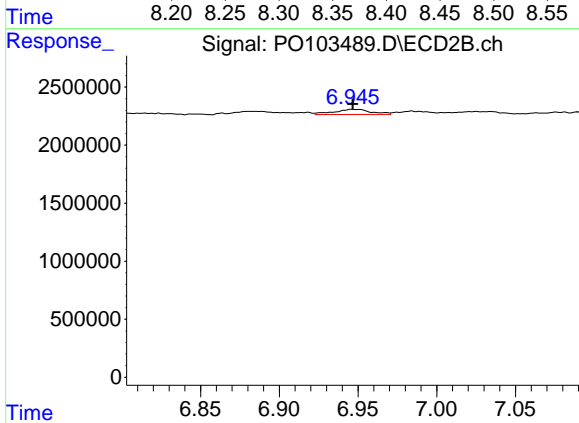
R.T.: 6.652 min
 Delta R.T.: 0.003 min
 Response: 2049257
 Conc: 26.73 ng/ml



#37 AR-1262-2

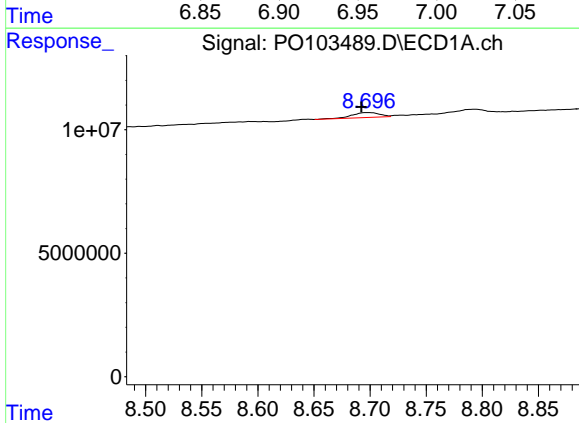
R.T.: 8.383 min
 Delta R.T.: 0.006 min
 Response: 2257668
 Conc: 3.48 ng/ml

Instrument :
 ECD_O
 ClientSampleId :
 CABLE-5A



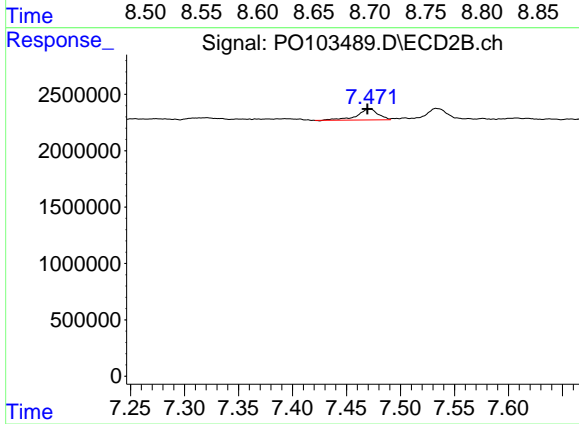
#37 AR-1262-2

R.T.: 6.947 min
 Delta R.T.: 0.000 min
 Response: 734430
 Conc: 6.23 ng/ml



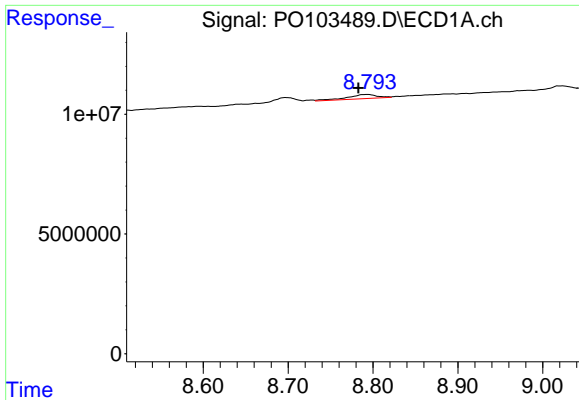
#38 AR-1262-3

R.T.: 8.698 min
 Delta R.T.: 0.006 min
 Response: 3385429
 Conc: 7.90 ng/ml



#38 AR-1262-3

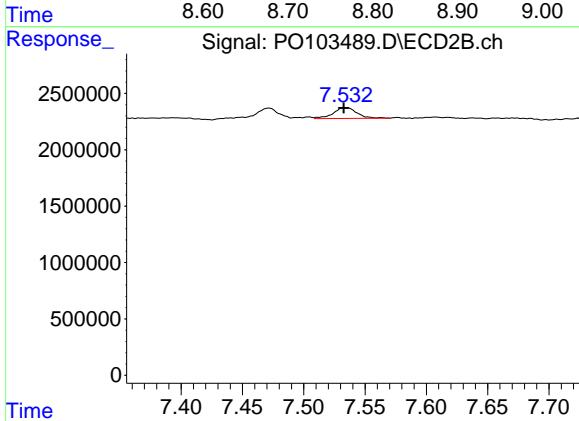
R.T.: 7.472 min
 Delta R.T.: 0.002 min
 Response: 1308165
 Conc: 14.48 ng/ml



#39 AR-1262-4

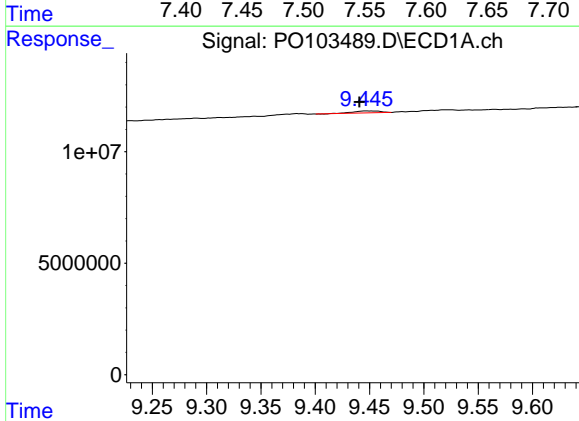
R.T.: 8.794 min
 Delta R.T.: 0.011 min
 Response: 4246418
 Conc: 12.64 ng/ml

Instrument :
 ECD_O
 ClientSampleId :
 CABLE-5A



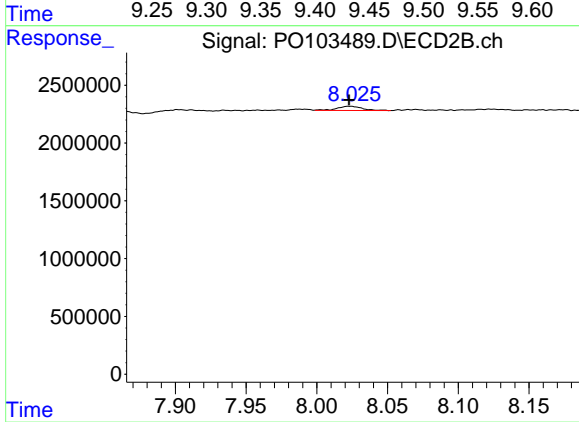
#39 AR-1262-4

R.T.: 7.533 min
 Delta R.T.: 0.000 min
 Response: 1290466
 Conc: 7.72 ng/ml



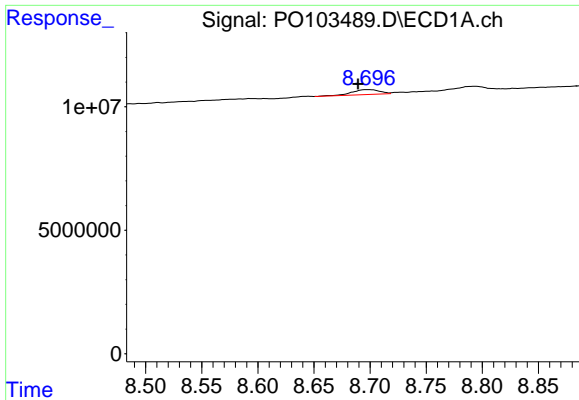
#40 AR-1262-5

R.T.: 9.447 min
 Delta R.T.: 0.006 min
 Response: 1478174
 Conc: 6.23 ng/ml



#40 AR-1262-5

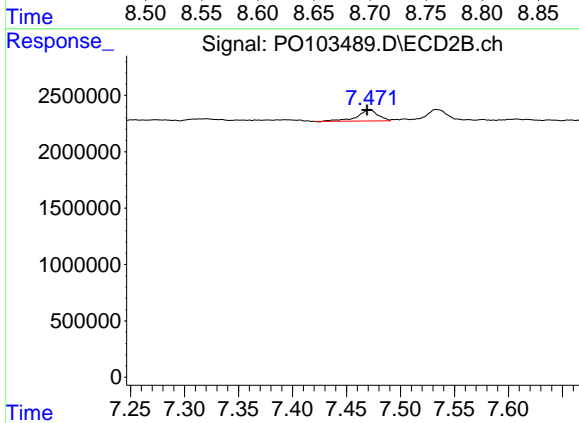
R.T.: 8.023 min
 Delta R.T.: 0.000 min
 Response: 451594
 Conc: 6.26 ng/ml



#41 AR-1268-1

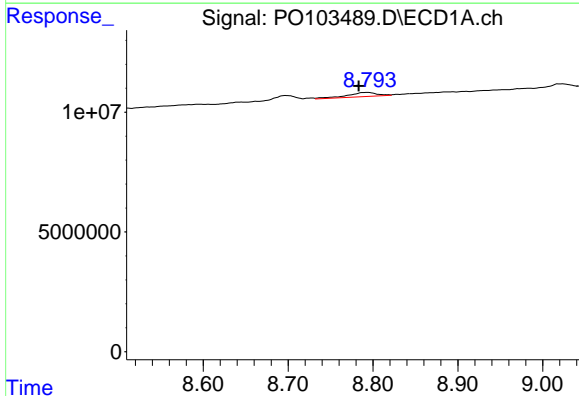
R.T.: 8.698 min
 Delta R.T.: 0.009 min
 Response: 3385429
 Conc: 4.35 ng/ml

Instrument :
 ECD_O
 ClientSampleId :
 CABLE-5A



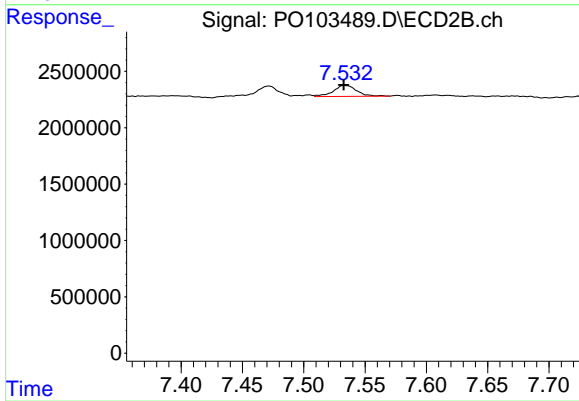
#41 AR-1268-1

R.T.: 7.472 min
 Delta R.T.: 0.002 min
 Response: 1308165
 Conc: 5.08 ng/ml



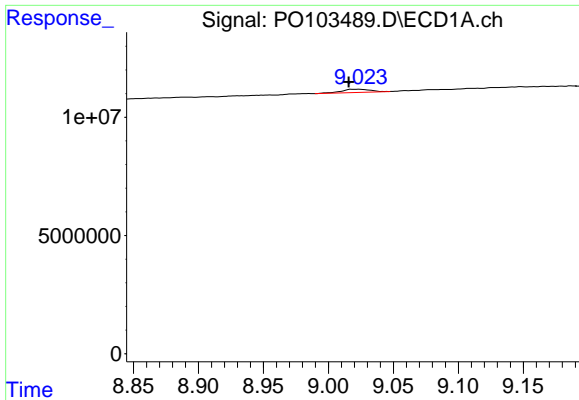
#42 AR-1268-2

R.T.: 8.794 min
 Delta R.T.: 0.010 min
 Response: 4246418
 Conc: 5.94 ng/ml



#42 AR-1268-2

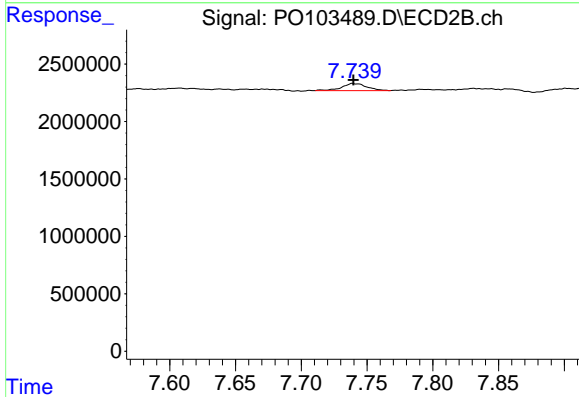
R.T.: 7.533 min
 Delta R.T.: 0.000 min
 Response: 1290466
 Conc: 5.17 ng/ml



#43 AR-1268-3

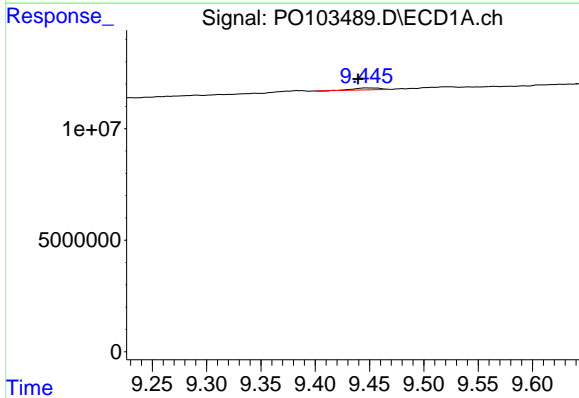
R.T.: 9.023 min
 Delta R.T.: 0.008 min
 Response: 2158301
 Conc: 3.43 ng/ml

Instrument :
 ECD_O
 ClientSampleId :
 CABLE-5A



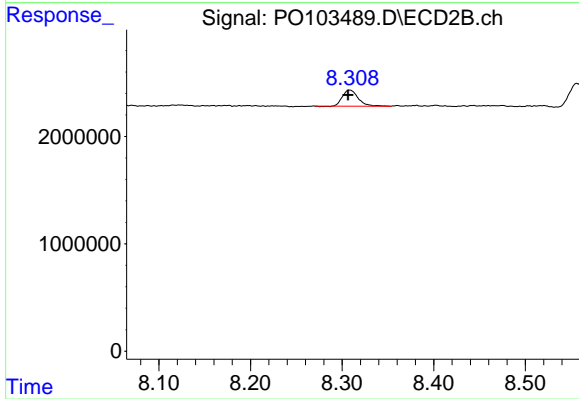
#43 AR-1268-3

R.T.: 7.739 min
 Delta R.T.: 0.000 min
 Response: 815856
 Conc: 4.06 ng/ml



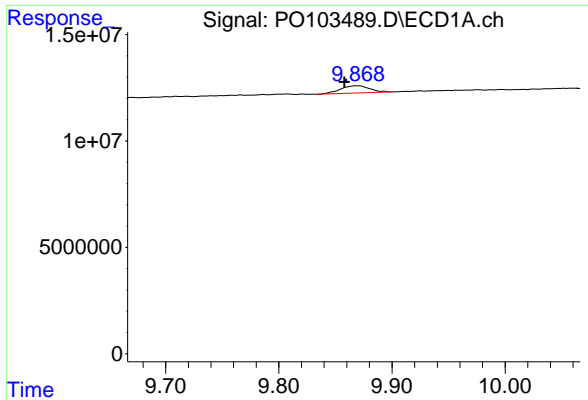
#44 AR-1268-4

R.T.: 9.447 min
 Delta R.T.: 0.007 min
 Response: 1478174
 Conc: 5.83 ng/ml



#44 AR-1268-4

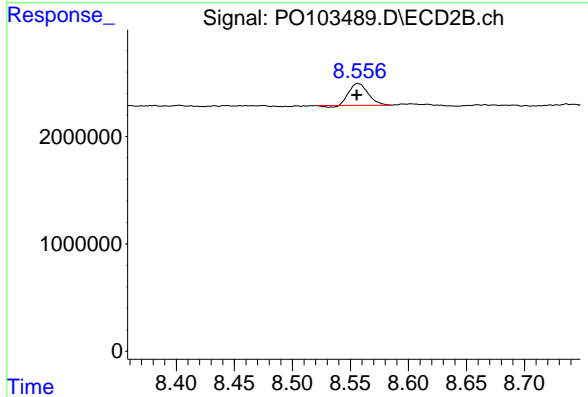
R.T.: 8.308 min
 Delta R.T.: 0.002 min
 Response: 1775232
 Conc: 3.28 ng/ml



#45 AR-1268-5

R.T.: 9.869 min
 Delta R.T.: 0.011 min
 Response: 6052065
 Conc: 3.13 ng/ml

Instrument :
 ECD_O
 ClientSampleId :
 CABLE-5A



#45 AR-1268-5

R.T.: 8.557 min
 Delta R.T.: 0.001 min
 Response: 2270025
 Conc: 9.75 ng/ml