

Data Path : Z:\pestpcbsrv\HPCHEM1\ECD_0\Data\P0050825\
 Data File : PO110949.D
 Signal(s) : Signal #1: ECD1A.ch Signal #2: ECD2B.ch
 Acq On : 08 May 2025 10:36
 Operator : YP/AJ
 Sample : AR1248CCC500
 Misc :
 ALS Vial : 5 Sample Multiplier: 1

Instrument :
 ECD_0
 ClientSampleId :
 AR1248CCC500

Integration File signal 1: autoint1.e
 Integration File signal 2: autoint2.e
 Quant Time: May 08 13:10:04 2025
 Quant Method : Z:\pestpcbsrv\HPCHEM1\ECD_0\methods\P0050225.M
 Quant Title : GC EXTRACTABLES
 QLast Update : Fri May 02 23:47:49 2025
 Response via : Initial Calibration
 Integrator: ChemStation

Volume Inj. : 2 µl
 Signal #1 Phase : ZB-MR1 Signal #2 Phase: ZB-MR2
 Signal #1 Info : 30Mx0.32mmx 0.50µ Signal #2 Info : 30M x 0.32mm x 0.25µm

Compound	RT#1	RT#2	Resp#1	Resp#2	ng/ml	ng/ml
System Monitoring Compounds						
1) SA Tetrachlo...	3.684	3.680	293.8E6	273.4E6	51.359	56.452
2) SA Decachlor...	8.727	8.675	258.4E6	89096303	42.341	52.805
Target Compounds						
3) L1 AR-1016-1	4.774	4.759	65835549	54751772	297.879	344.617
4) L1 AR-1016-2	4.793	4.778	68072728	58861644	219.468	257.524
5) L1 AR-1016-3	4.850	4.954	42655489	37712307	186.511	309.279 #
6) L1 AR-1016-4	4.971	4.995	45308433	76943637	270.995	763.625 #
7) L1 AR-1016-5	5.227	5.209	109.5E6	94145885	614.662	716.469
8) L2 AR-1221-1	3.895	3.890	2393380	989181	27.489	14.860 #
9) L2 AR-1221-2	3.985	3.978	7423934	5622467	109.641	109.532
10) L2 AR-1221-3	4.058	4.050	6261065	5255536	31.658	34.342
11) L3 AR-1232-1	4.058	4.050	6261065	5255536	40.766	44.742
12) L3 AR-1232-2	4.551	4.778	27916299	58861644	338.869	511.685 #
13) L3 AR-1232-3	4.793	4.954	68072728	37712307	427.902	625.553 #
14) L3 AR-1232-4	4.971	5.038	45308433	81393871	538.293	1460.961 #
15) L3 AR-1232-5	5.013	5.209	87737362	94145885	1490.298	1599.358
16) L4 AR-1242-1	4.774	4.759	65835549	54751772	357.943	413.762
17) L4 AR-1242-2	4.793	4.778	68072728	58861644	264.253	309.677
18) L4 AR-1242-3	4.850	4.954	42655489	37712307	234.230	372.206 #
19) L4 AR-1242-4	4.971	5.038	45308433	81393871	324.436	784.819 #
20) L4 AR-1242-5	5.623	5.558	112.9E6	128.8E6	724.364	1017.986 #
21) L5 AR-1248-1	4.774	4.759	65835549	54751772	501.175	568.112
22) L5 AR-1248-2	5.013	4.995	87737362	76943637	500.691	569.439
23) L5 AR-1248-3	5.227	5.038	109.5E6	81393871	496.510	560.784
24) L5 AR-1248-4	5.581	5.209	155.6E6	94145885	474.788	562.011
25) L5 AR-1248-5	5.623	5.600	112.9E6	92118310	483.725	548.720
26) L6 AR-1254-1	5.581	5.558	155.6E6	128.8E6	460.925	513.266
27) L6 AR-1254-2	5.731	5.707	48394058	41058912	168.209	188.183
28) L6 AR-1254-3	6.135	6.108	72747331	57570812	159.081	172.260
29) L6 AR-1254-4	6.365	6.336	56062759	37836574	183.918	194.872
30) L6 AR-1254-5	6.784	6.753	21445714	11641413	50.833	43.393
31) L7 AR-1260-1	6.280	6.252	38655862	27750838	116.215	125.701
32) L7 AR-1260-2	6.456	6.426	8519930	4606617	20.539	17.909
33) L7 AR-1260-3	6.860f	6.578	1587070	6635122	4.505	28.459 #
34) L7 AR-1260-4	7.084	7.049	4319639	795953	14.198	4.371 #
35) L7 AR-1260-5	7.325	7.290	4624451	2246786	6.297	5.714
36) L8 AR-1262-1	6.860f	6.823	1587070	1269289	3.447	4.495 #
37) L8 AR-1262-2	7.325	7.290	4624451	2246786	5.880	5.114
38) L8 AR-1262-3	7.612	7.573	808341	913266	2.420	5.625 #
39) L8 AR-1262-4	7.671	7.634	2068245	1994097	3.575	6.850 #
40) L8 AR-1262-5	8.195	8.136	1729791	124378	6.484	1.262 #
41) L9 AR-1268-1	7.612	7.573	808341	913266	0.908	2.119 #

Data Path : Z:\pestpcbsrv\HPCHEM1\ECD_0\Data\P0050825\
 Data File : P0110949.D
 Signal(s) : Signal #1: ECD1A.ch Signal #2: ECD2B.ch
 Acq On : 08 May 2025 10:36
 Operator : YP/AJ
 Sample : AR1248CCC500
 Misc :
 ALS Vial : 5 Sample Multiplier: 1

Instrument :
 ECD_0
ClientSampleId :
 AR1248CCC500

Integration File signal 1: autoint1.e
 Integration File signal 2: autoint2.e
 Quant Time: May 08 13:10:04 2025
 Quant Method : Z:\pestpcbsrv\HPCHEM1\ECD_0\methods\P0050225.M
 Quant Title : GC EXTRACTABLES
 QLast Update : Fri May 02 23:47:49 2025
 Response via : Initial Calibration
 Integrator: ChemStation

Volume Inj. : 2 µl
 Signal #1 Phase : ZB-MR1 Signal #2 Phase: ZB-MR2
 Signal #1 Info : 30Mx0.32mmx 0.50µ Signal #2 Info : 30M x 0.32mm x 0.25µm

	Compound	RT#1	RT#2	Resp#1	Resp#2	ng/ml	ng/ml
42)	L9 AR-1268-2	7.671	7.634	2068245	1994097	2.577	5.195 #
43)	L9 AR-1268-3	7.882	7.844	2847731	843370	4.148	2.969 #
44)	L9 AR-1268-4	8.195	8.136	1729791	124378	6.222	1.195 #
45)	L9 AR-1268-5	8.466	8.420	4600712	945596	2.251	1.558 #

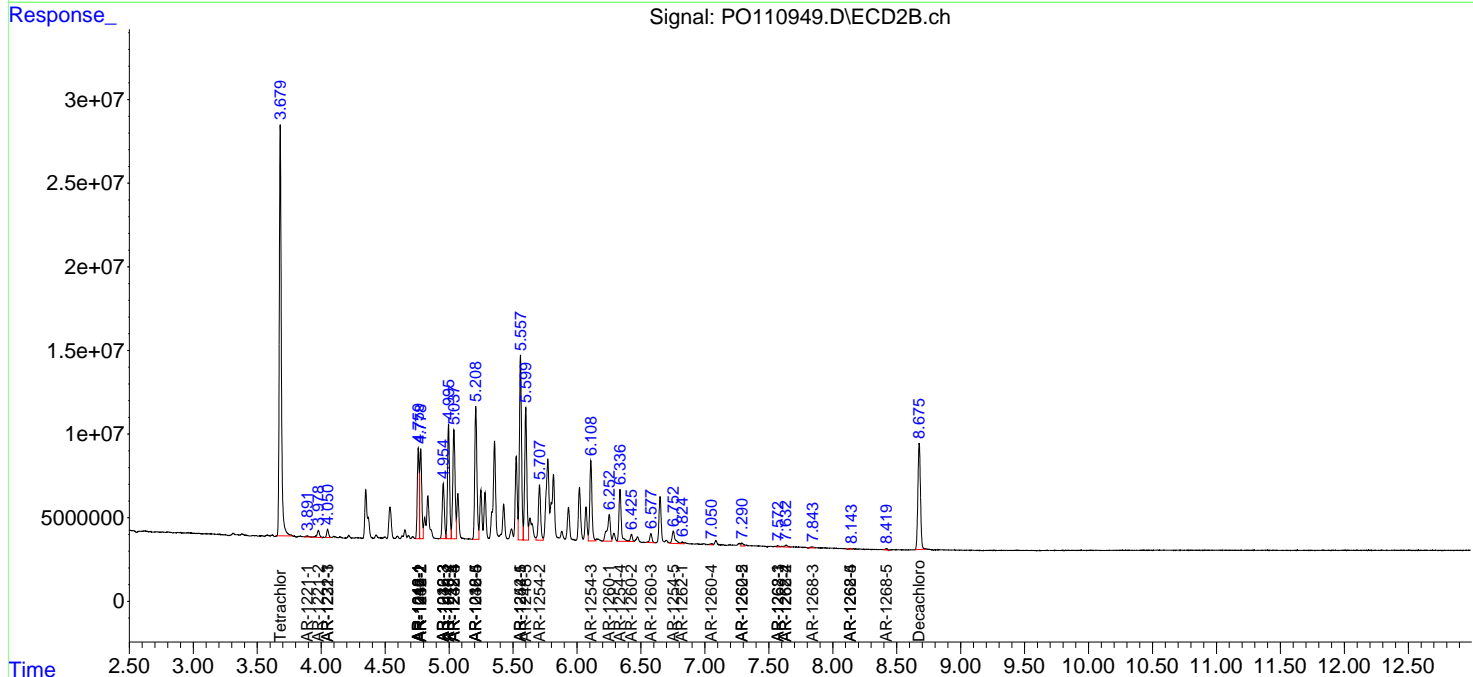
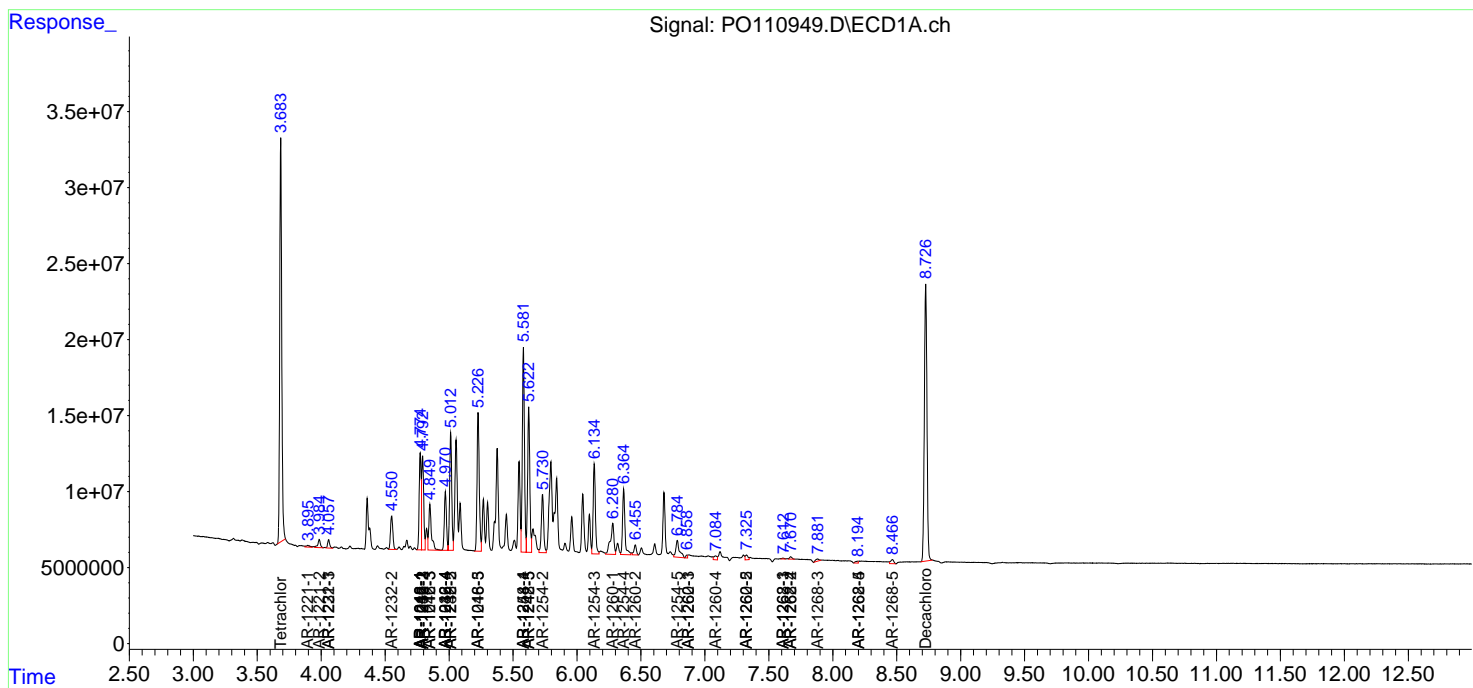
(f)=RT Delta > 1/2 Window (#)=Amounts differ by > 25% (m)=manual int.

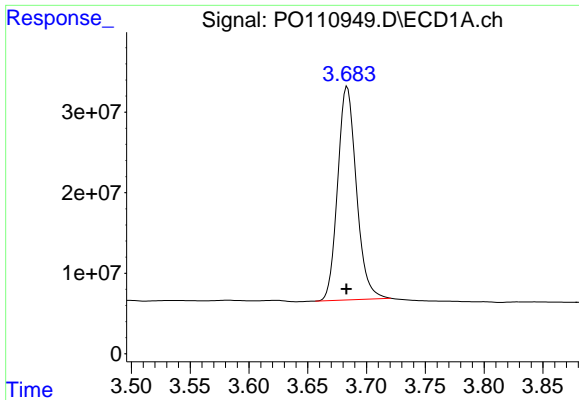
Data Path : Z:\pestpcbsrv\HPCHEM1\ECD_O\Data\P0050825\
 Data File : PO110949.D
 Signal(s) : Signal #1: ECD1A.ch Signal #2: ECD2B.ch
 Acq On : 08 May 2025 10:36
 Operator : YP/AJ
 Sample : AR1248CCC500
 Misc :
 ALS Vial : 5 Sample Multiplier: 1

Instrument :
 ECD_O
 ClientSampleId :
 AR1248CCC500

Integration File signal 1: autoint1.e
 Integration File signal 2: autoint2.e
 Quant Time: May 08 13:10:04 2025
 Quant Method : Z:\pestpcbsrv\HPCHEM1\ECD_O\methods\P0050225.M
 Quant Title : GC EXTRACTABLES
 QLast Update : Fri May 02 23:47:49 2025
 Response via : Initial Calibration
 Integrator: ChemStation

Volume Inj. : 2 µl
 Signal #1 Phase : ZB-MR1 Signal #2 Phase: ZB-MR2
 Signal #1 Info : 30Mx0.32mmx 0.50µ Signal #2 Info : 30M x 0.32mm x 0.25µm

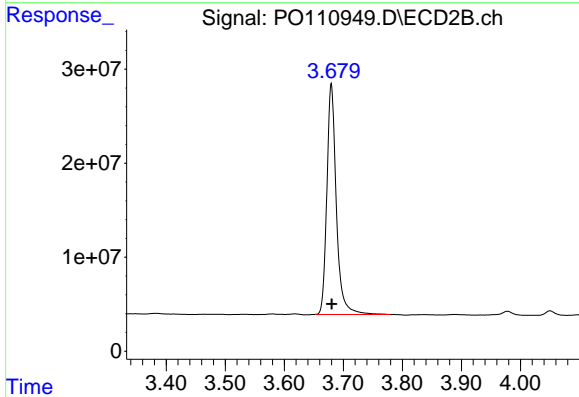




#1 Tetrachloro-m-xylene

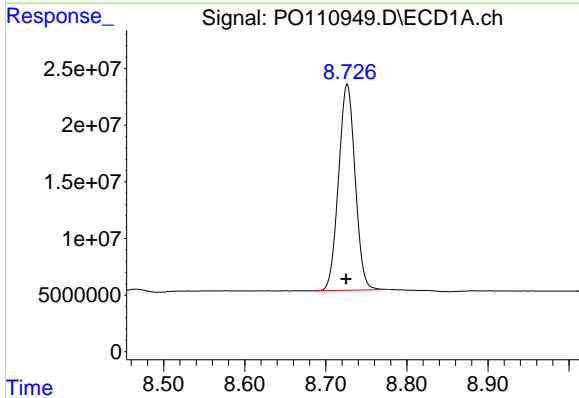
R.T.: 3.684 min
 Delta R.T.: 0.000 min
 Response: 293814071
 Conc: 51.36 ng/ml

Instrument :
 ECD_O
 ClientSampleId :
 AR1248CCC500



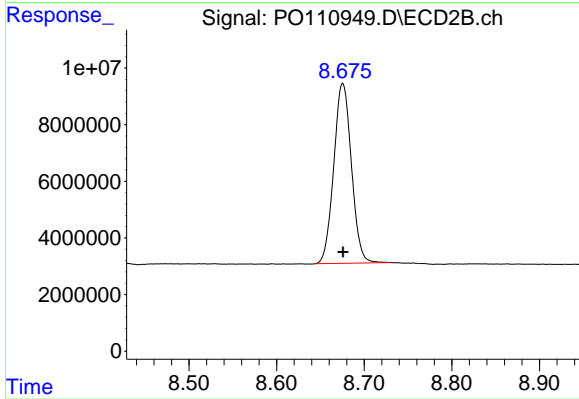
#1 Tetrachloro-m-xylene

R.T.: 3.680 min
 Delta R.T.: 0.000 min
 Response: 273404680
 Conc: 56.45 ng/ml



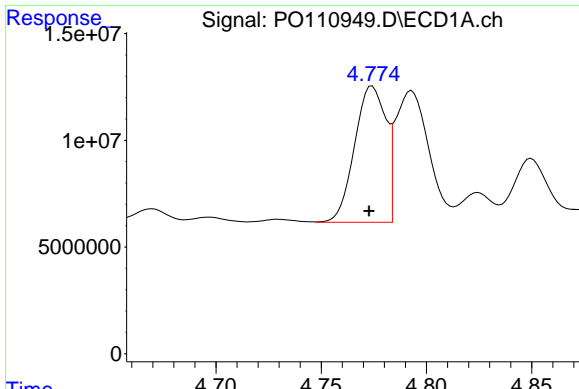
#2 Decachlorobiphenyl

R.T.: 8.727 min
 Delta R.T.: 0.002 min
 Response: 258384101
 Conc: 42.34 ng/ml



#2 Decachlorobiphenyl

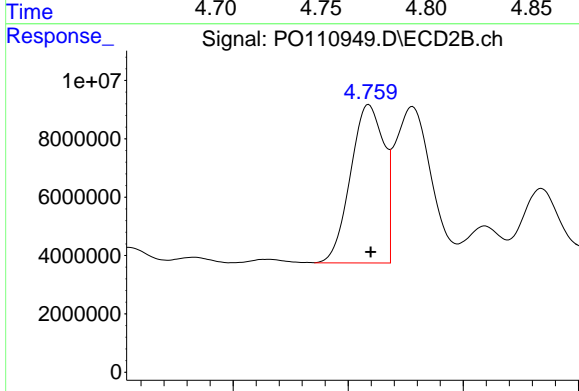
R.T.: 8.675 min
 Delta R.T.: 0.000 min
 Response: 89096303
 Conc: 52.81 ng/ml



#3 AR-1016-1

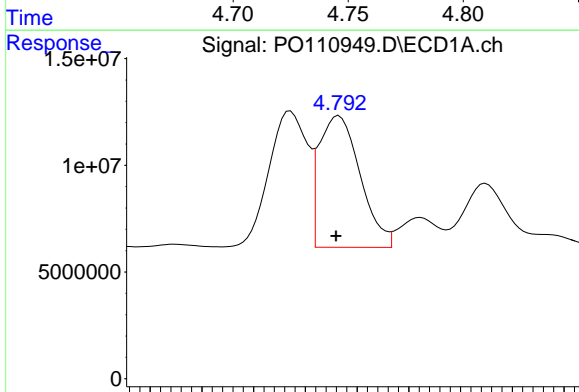
R.T.: 4.774 min
 Delta R.T.: 0.002 min
 Response: 65835549
 Conc: 297.88 ng/ml

Instrument :
 ECD_O
 ClientSampleId :
 AR1248CCC500



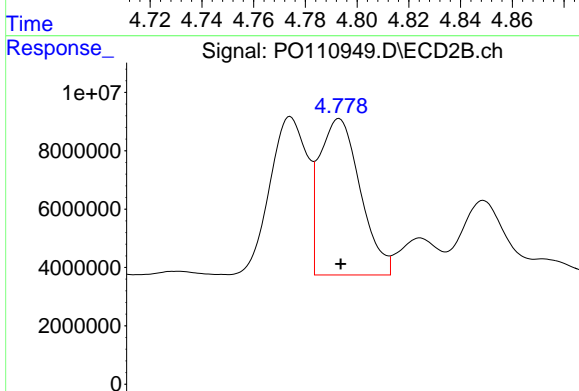
#3 AR-1016-1

R.T.: 4.759 min
 Delta R.T.: 0.000 min
 Response: 54751772
 Conc: 344.62 ng/ml



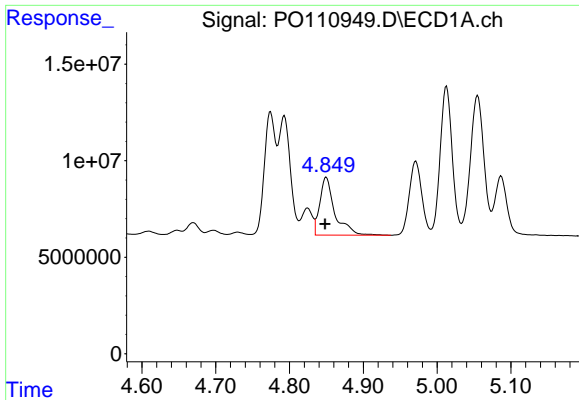
#4 AR-1016-2

R.T.: 4.793 min
 Delta R.T.: 0.001 min
 Response: 68072728
 Conc: 219.47 ng/ml



#4 AR-1016-2

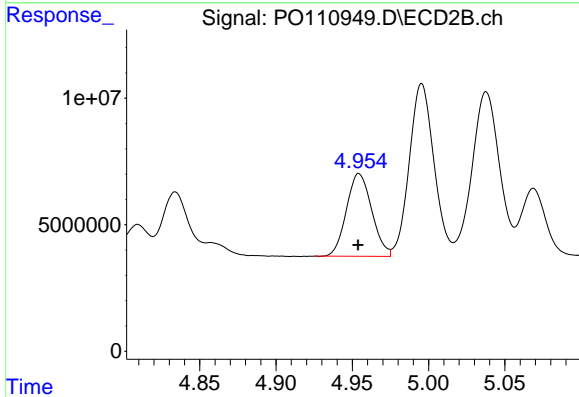
R.T.: 4.778 min
 Delta R.T.: 0.000 min
 Response: 58861644
 Conc: 257.52 ng/ml



#5 AR-1016-3

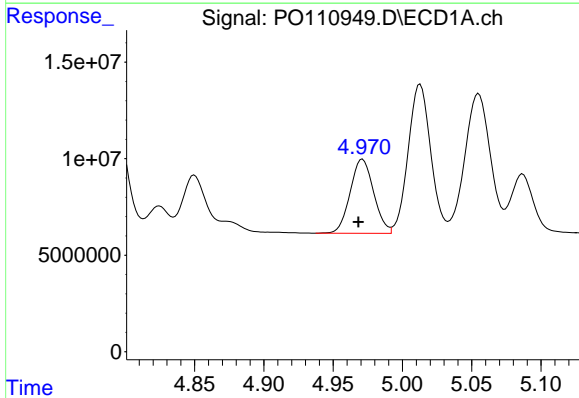
R.T.: 4.850 min
 Delta R.T.: 0.002 min
 Response: 42655489
 Conc: 186.51 ng/ml

Instrument :
 ECD_O
 ClientSampleId :
 AR1248CCC500



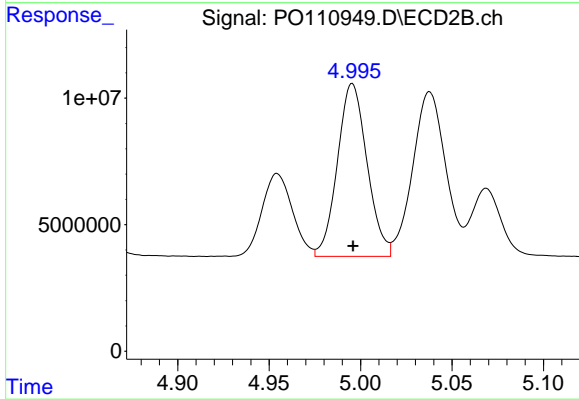
#5 AR-1016-3

R.T.: 4.954 min
 Delta R.T.: 0.000 min
 Response: 37712307
 Conc: 309.28 ng/ml



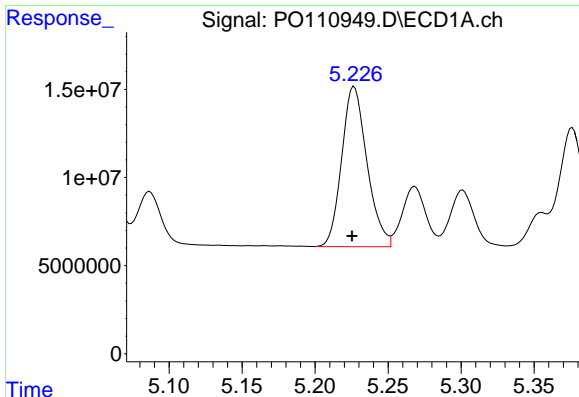
#6 AR-1016-4

R.T.: 4.971 min
 Delta R.T.: 0.003 min
 Response: 45308433
 Conc: 271.00 ng/ml



#6 AR-1016-4

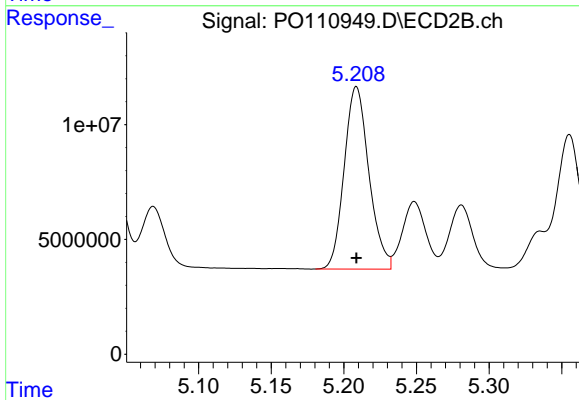
R.T.: 4.995 min
 Delta R.T.: 0.000 min
 Response: 76943637
 Conc: 763.63 ng/ml



#7 AR-1016-5

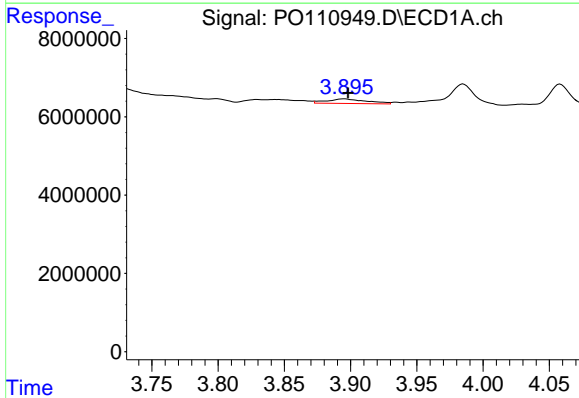
R.T.: 5.227 min
 Delta R.T.: 0.002 min
 Response: 109464488
 Conc: 614.66 ng/ml

Instrument :
 ECD_O
 ClientSampleId :
 AR1248CCC500



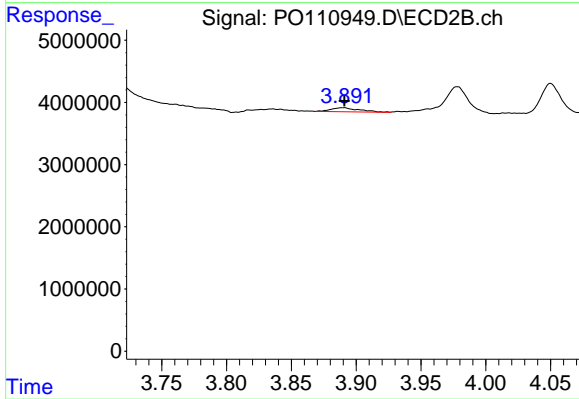
#7 AR-1016-5

R.T.: 5.209 min
 Delta R.T.: 0.000 min
 Response: 94145885
 Conc: 716.47 ng/ml



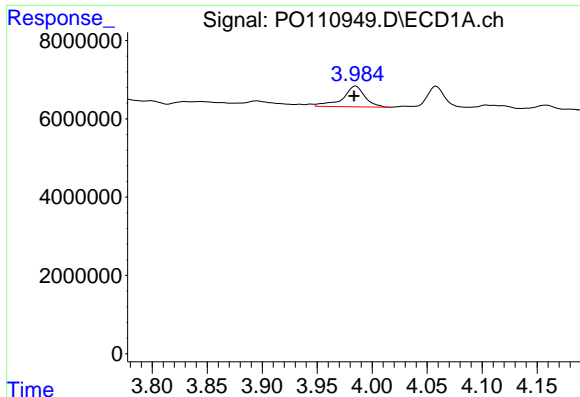
#8 AR-1221-1

R.T.: 3.895 min
 Delta R.T.: -0.003 min
 Response: 2393380
 Conc: 27.49 ng/ml



#8 AR-1221-1

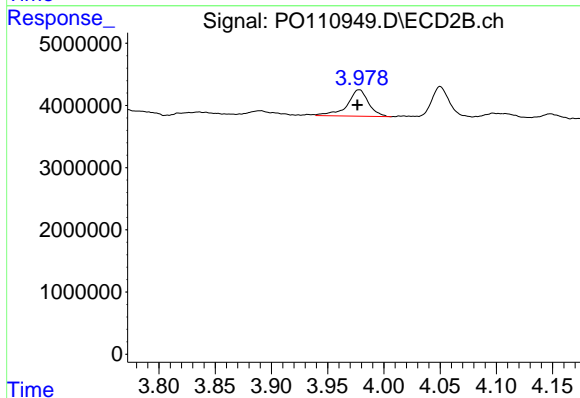
R.T.: 3.890 min
 Delta R.T.: 0.000 min
 Response: 989181
 Conc: 14.86 ng/ml



#9 AR-1221-2

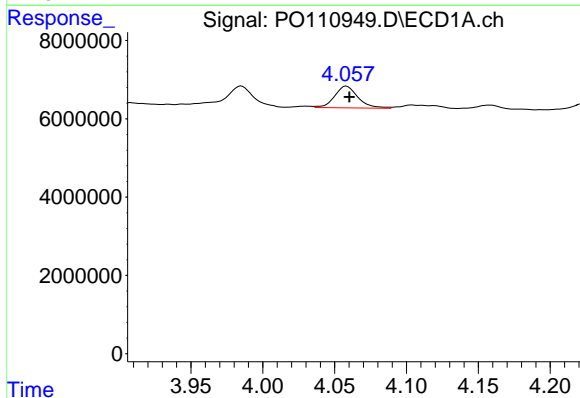
R.T.: 3.985 min
 Delta R.T.: 0.001 min
 Response: 7423934
 Conc: 109.64 ng/ml

Instrument :
 ECD_O
 ClientSampleId :
 AR1248CCC500



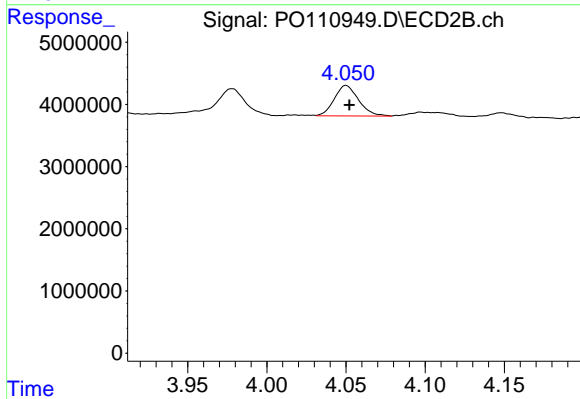
#9 AR-1221-2

R.T.: 3.978 min
 Delta R.T.: 0.002 min
 Response: 5622467
 Conc: 109.53 ng/ml



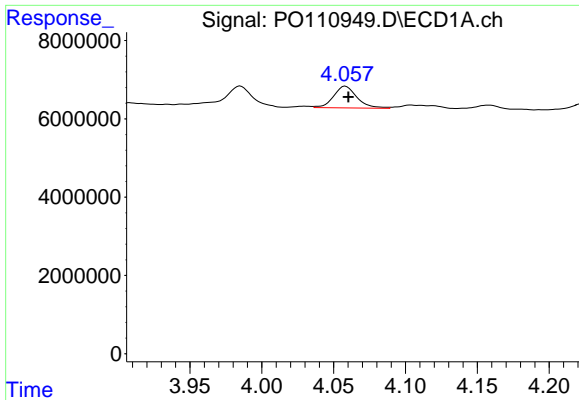
#10 AR-1221-3

R.T.: 4.058 min
 Delta R.T.: -0.002 min
 Response: 6261065
 Conc: 31.66 ng/ml



#10 AR-1221-3

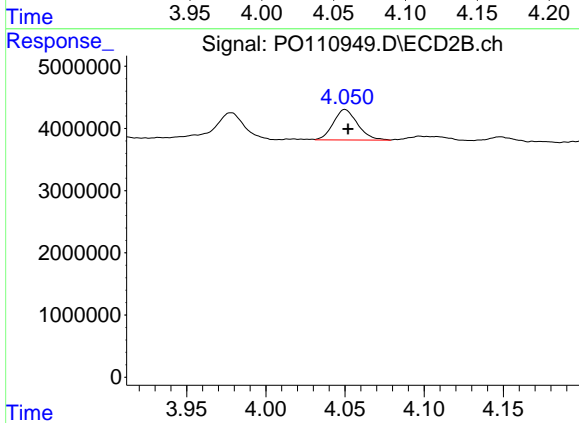
R.T.: 4.050 min
 Delta R.T.: -0.002 min
 Response: 5255536
 Conc: 34.34 ng/ml



#11 AR-1232-1

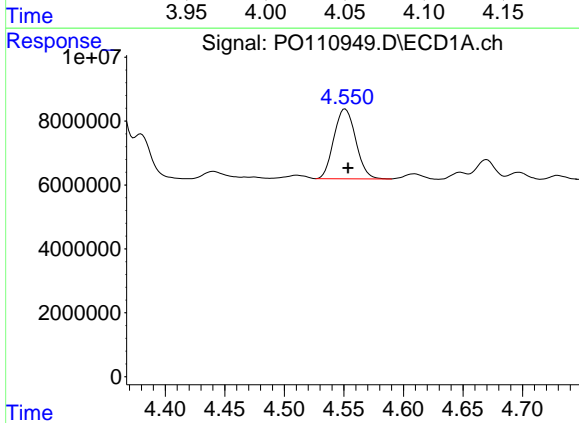
R.T.: 4.058 min
 Delta R.T.: -0.002 min
 Response: 6261065
 Conc: 40.77 ng/ml

Instrument :
 ECD_O
 ClientSampleId :
 AR1248CCC500



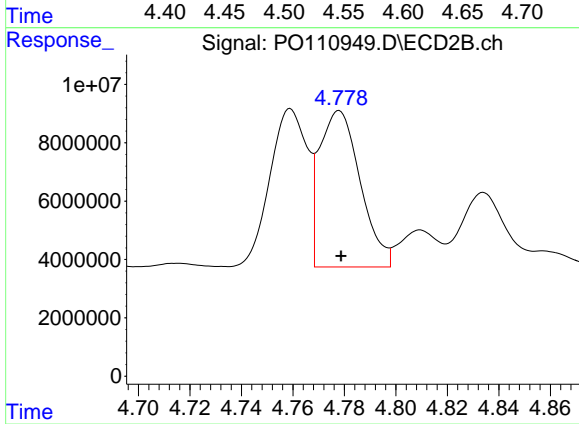
#11 AR-1232-1

R.T.: 4.050 min
 Delta R.T.: -0.002 min
 Response: 5255536
 Conc: 44.74 ng/ml



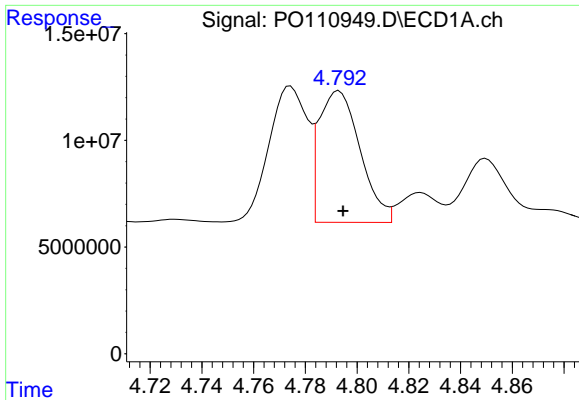
#12 AR-1232-2

R.T.: 4.551 min
 Delta R.T.: -0.002 min
 Response: 27916299
 Conc: 338.87 ng/ml



#12 AR-1232-2

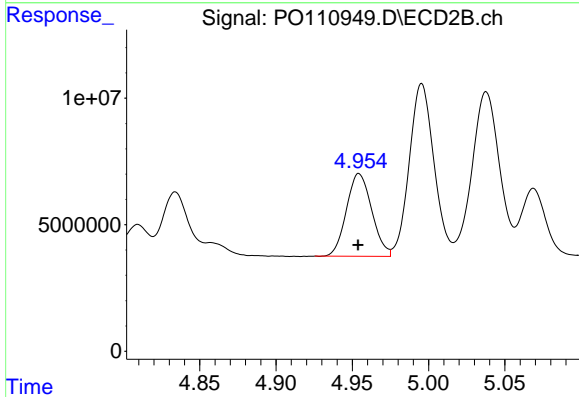
R.T.: 4.778 min
 Delta R.T.: 0.000 min
 Response: 58861644
 Conc: 511.68 ng/ml



#13 AR-1232-3

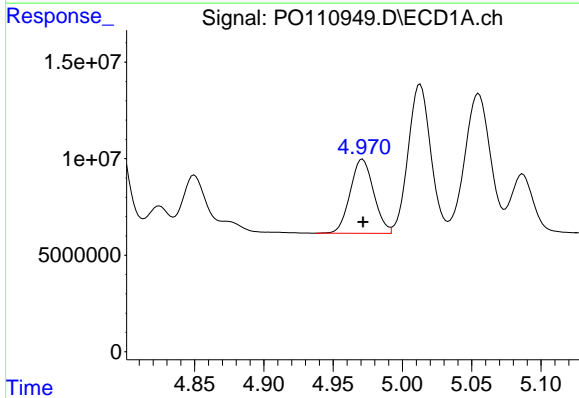
R.T.: 4.793 min
 Delta R.T.: -0.002 min
 Response: 68072728
 Conc: 427.90 ng/ml

Instrument :
 ECD_O
 ClientSampleId :
 AR1248CCC500



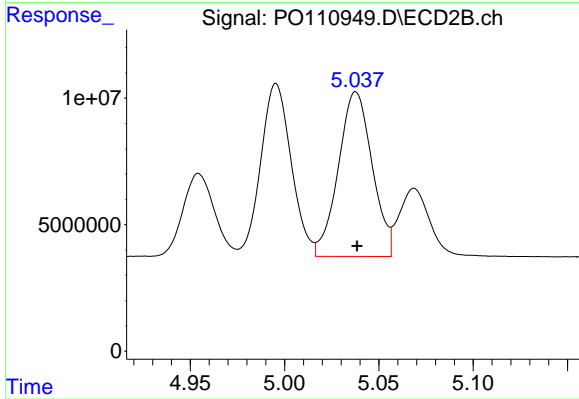
#13 AR-1232-3

R.T.: 4.954 min
 Delta R.T.: 0.000 min
 Response: 37712307
 Conc: 625.55 ng/ml



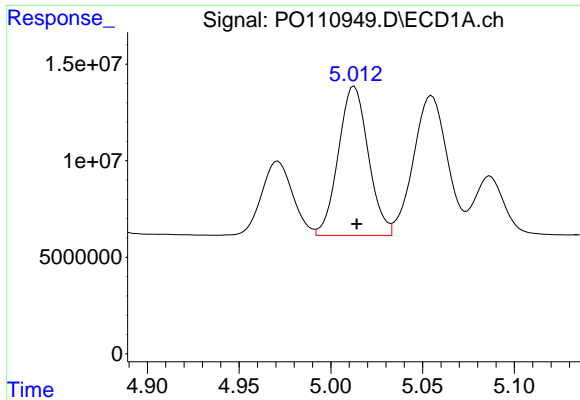
#14 AR-1232-4

R.T.: 4.971 min
 Delta R.T.: 0.000 min
 Response: 45308433
 Conc: 538.29 ng/ml



#14 AR-1232-4

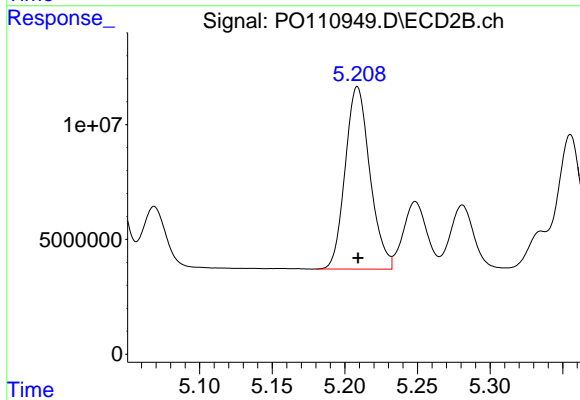
R.T.: 5.038 min
 Delta R.T.: 0.000 min
 Response: 81393871
 Conc: 1460.96 ng/ml



#15 AR-1232-5

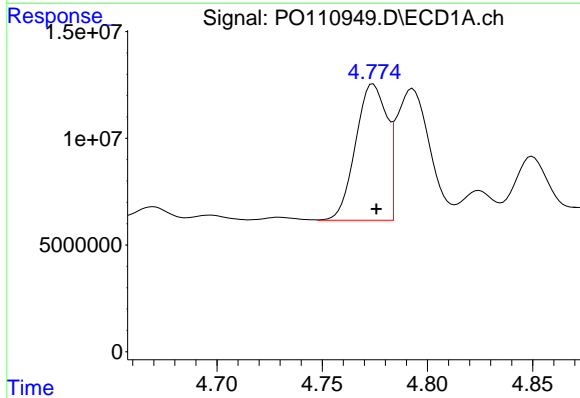
R.T.: 5.013 min
 Delta R.T.: -0.001 min
 Response: 87737362
 Conc: 1490.30 ng/ml

Instrument :
 ECD_O
 ClientSampleId :
 AR1248CCC500



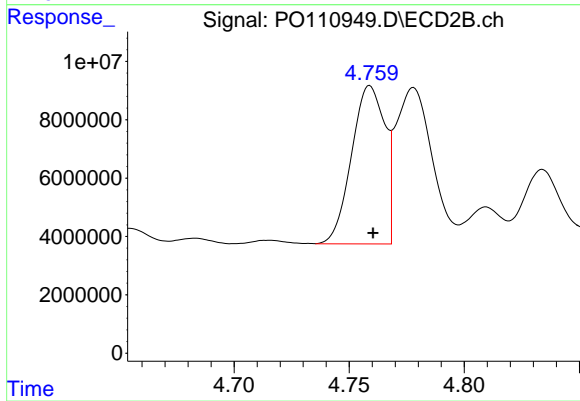
#15 AR-1232-5

R.T.: 5.209 min
 Delta R.T.: 0.000 min
 Response: 94145885
 Conc: 1599.36 ng/ml



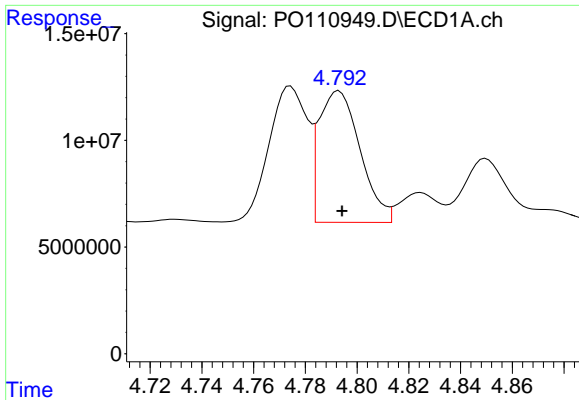
#16 AR-1242-1

R.T.: 4.774 min
 Delta R.T.: -0.001 min
 Response: 65835549
 Conc: 357.94 ng/ml



#16 AR-1242-1

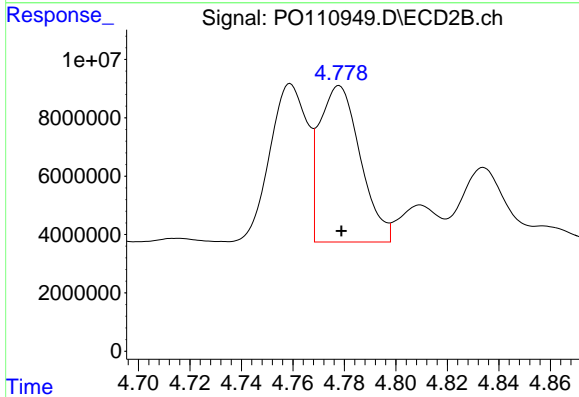
R.T.: 4.759 min
 Delta R.T.: -0.001 min
 Response: 54751772
 Conc: 413.76 ng/ml



#17 AR-1242-2

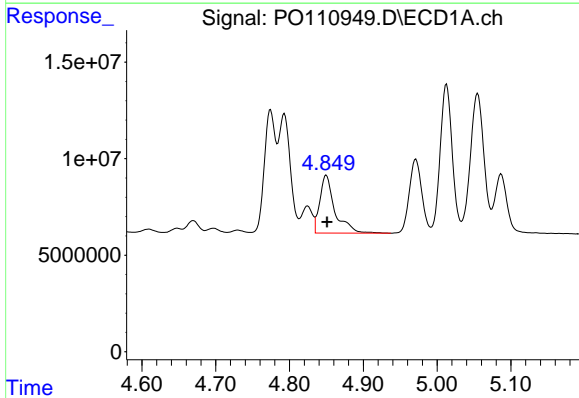
R.T.: 4.793 min
 Delta R.T.: -0.001 min
 Response: 68072728
 Conc: 264.25 ng/ml

Instrument :
 ECD_O
 ClientSampleId :
 AR1248CCC500



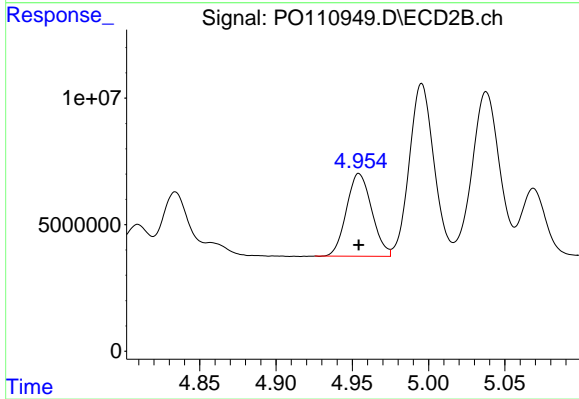
#17 AR-1242-2

R.T.: 4.778 min
 Delta R.T.: 0.000 min
 Response: 58861644
 Conc: 309.68 ng/ml



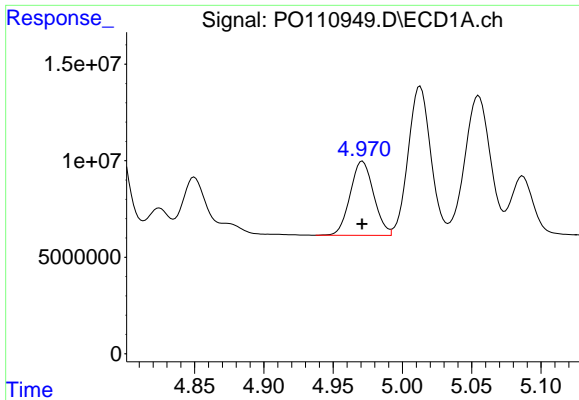
#18 AR-1242-3

R.T.: 4.850 min
 Delta R.T.: -0.001 min
 Response: 42655489
 Conc: 234.23 ng/ml



#18 AR-1242-3

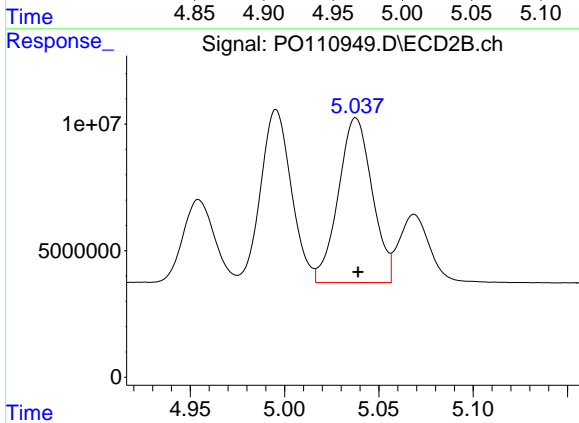
R.T.: 4.954 min
 Delta R.T.: 0.000 min
 Response: 37712307
 Conc: 372.21 ng/ml



#19 AR-1242-4

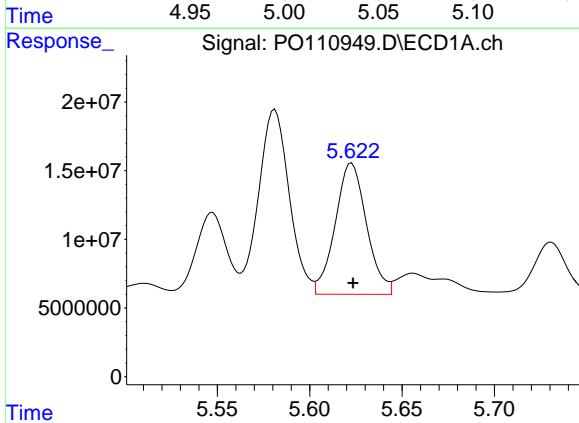
R.T.: 4.971 min
 Delta R.T.: 0.000 min
 Response: 45308433
 Conc: 324.44 ng/ml

Instrument :
 ECD_O
 ClientSampleId :
 AR1248CCC500



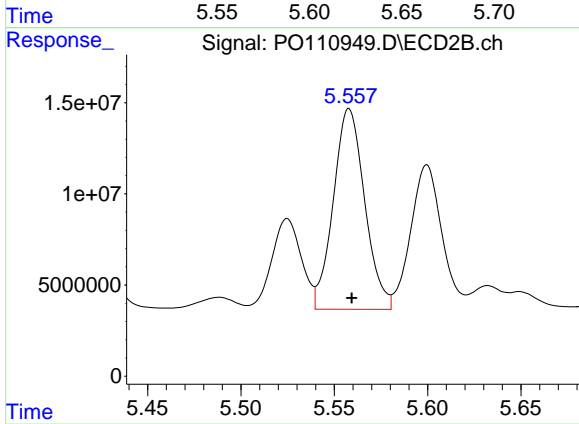
#19 AR-1242-4

R.T.: 5.038 min
 Delta R.T.: -0.001 min
 Response: 81393871
 Conc: 784.82 ng/ml



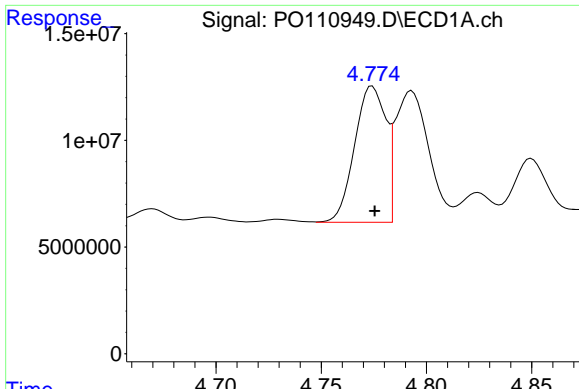
#20 AR-1242-5

R.T.: 5.623 min
 Delta R.T.: 0.000 min
 Response: 112924439
 Conc: 724.36 ng/ml



#20 AR-1242-5

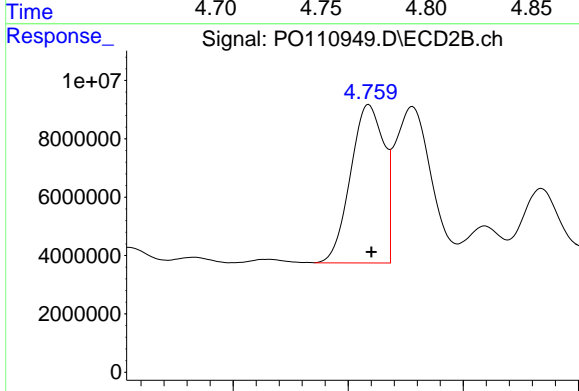
R.T.: 5.558 min
 Delta R.T.: -0.001 min
 Response: 128842113
 Conc: 1017.99 ng/ml



#21 AR-1248-1

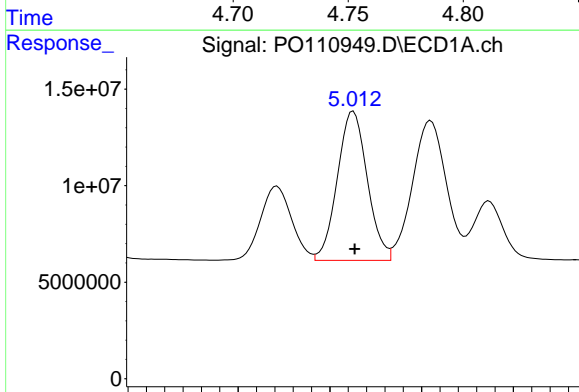
R.T.: 4.774 min
 Delta R.T.: -0.001 min
 Response: 65835549
 Conc: 501.18 ng/ml

Instrument :
 ECD_O
 ClientSampleId :
 AR1248CCC500



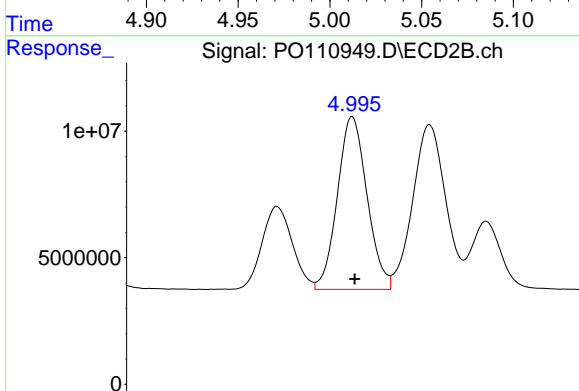
#21 AR-1248-1

R.T.: 4.759 min
 Delta R.T.: -0.001 min
 Response: 54751772
 Conc: 568.11 ng/ml



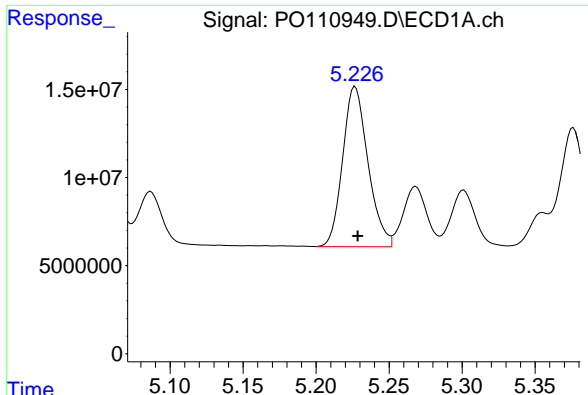
#22 AR-1248-2

R.T.: 5.013 min
 Delta R.T.: 0.000 min
 Response: 87737362
 Conc: 500.69 ng/ml



#22 AR-1248-2

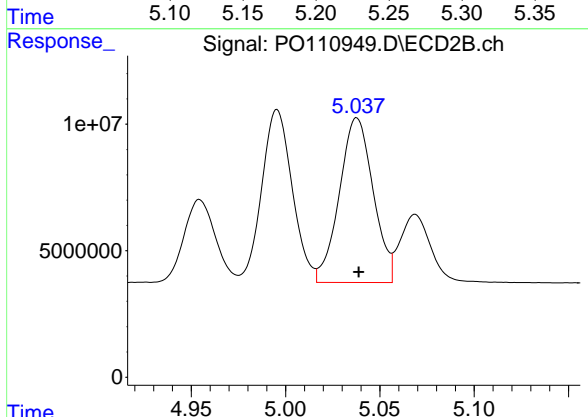
R.T.: 4.995 min
 Delta R.T.: -0.001 min
 Response: 76943637
 Conc: 569.44 ng/ml



#23 AR-1248-3

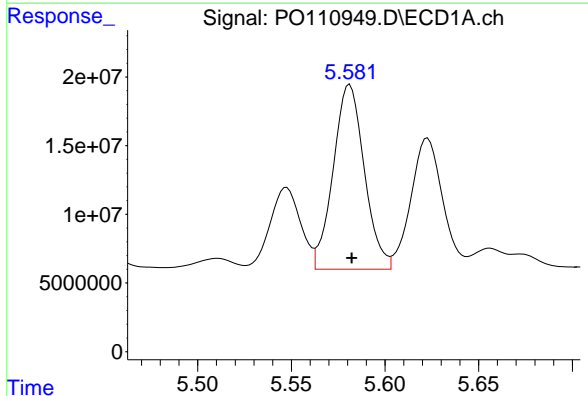
R.T.: 5.227 min
 Delta R.T.: -0.002 min
 Response: 109464488
 Conc: 496.51 ng/ml

Instrument :
 ECD_O
 ClientSampleId :
 AR1248CCC500



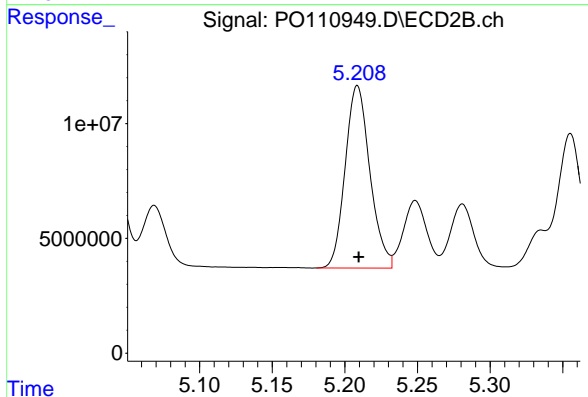
#23 AR-1248-3

R.T.: 5.038 min
 Delta R.T.: -0.001 min
 Response: 81393871
 Conc: 560.78 ng/ml



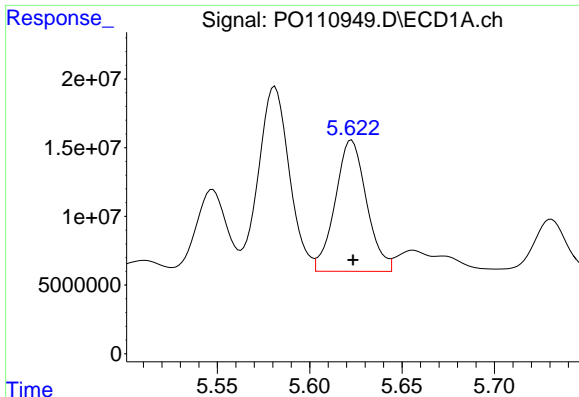
#24 AR-1248-4

R.T.: 5.581 min
 Delta R.T.: -0.001 min
 Response: 155594856
 Conc: 474.79 ng/ml



#24 AR-1248-4

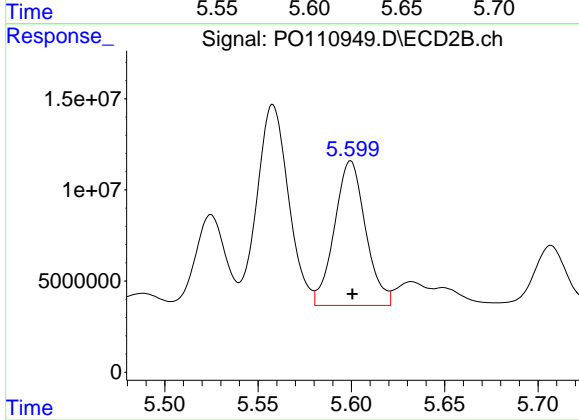
R.T.: 5.209 min
 Delta R.T.: 0.000 min
 Response: 94145885
 Conc: 562.01 ng/ml



#25 AR-1248-5

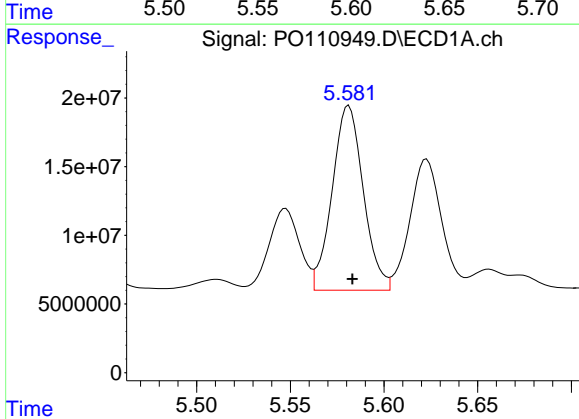
R.T.: 5.623 min
Delta R.T.: 0.000 min
Response: 112924439
Conc: 483.72 ng/ml

Instrument :
ECD_O
ClientSampleId :
AR1248CCC500



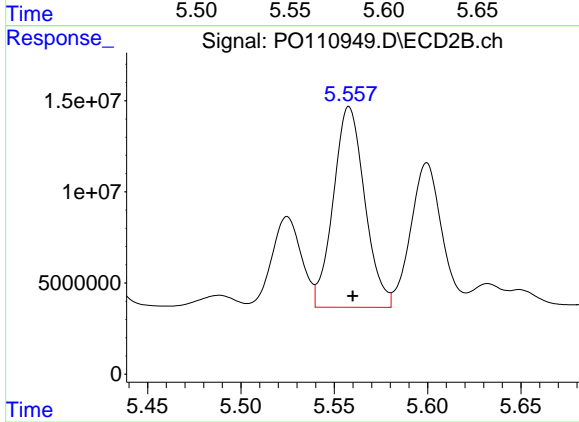
#25 AR-1248-5

R.T.: 5.600 min
Delta R.T.: -0.001 min
Response: 92118310
Conc: 548.72 ng/ml



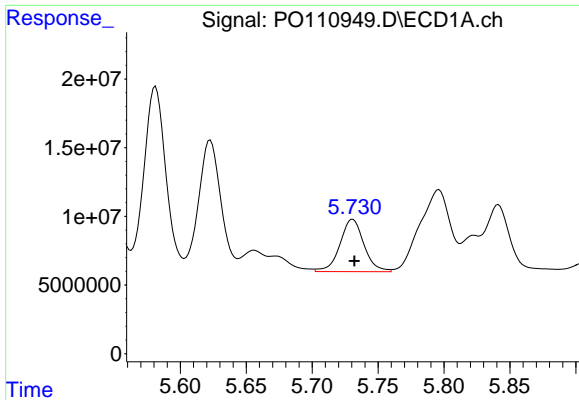
#26 AR-1254-1

R.T.: 5.581 min
Delta R.T.: -0.002 min
Response: 155594856
Conc: 460.92 ng/ml



#26 AR-1254-1

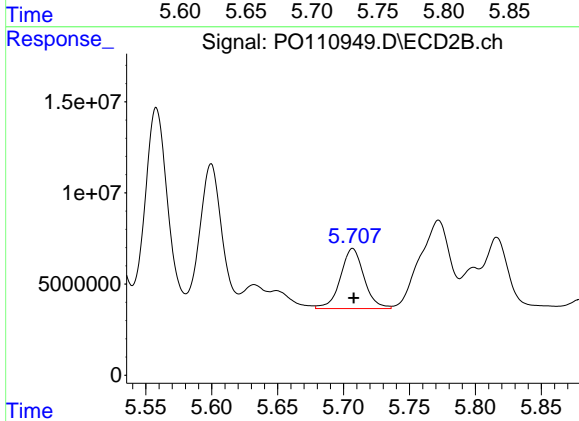
R.T.: 5.558 min
Delta R.T.: -0.002 min
Response: 128842113
Conc: 513.27 ng/ml



#27 AR-1254-2

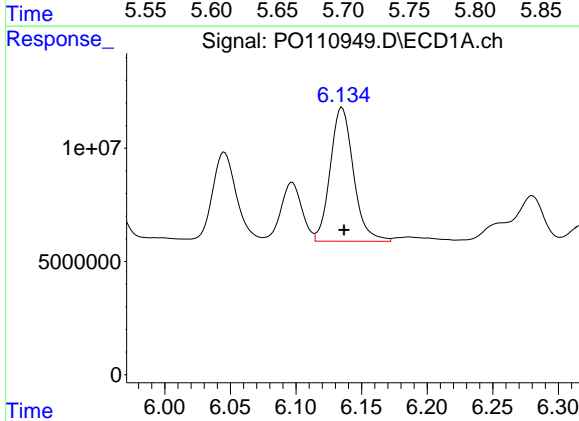
R.T.: 5.731 min
 Delta R.T.: -0.001 min
 Response: 48394058
 Conc: 168.21 ng/ml

Instrument :
 ECD_O
 ClientSampleId :
 AR1248CCC500



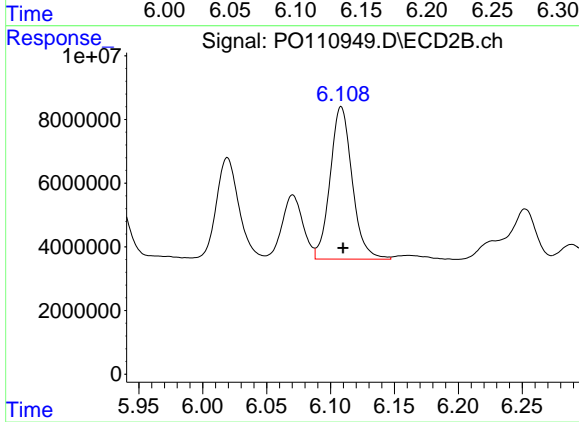
#27 AR-1254-2

R.T.: 5.707 min
 Delta R.T.: 0.000 min
 Response: 41058912
 Conc: 188.18 ng/ml



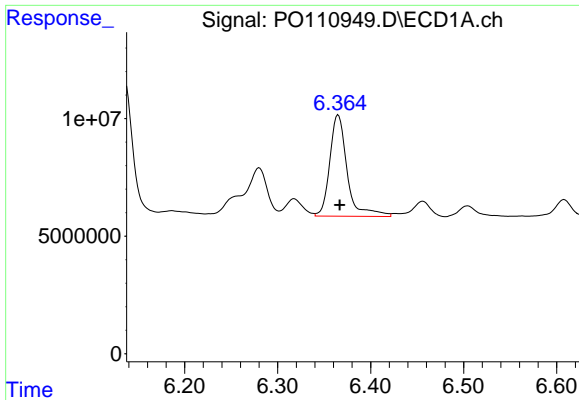
#28 AR-1254-3

R.T.: 6.135 min
 Delta R.T.: -0.001 min
 Response: 72747331
 Conc: 159.08 ng/ml



#28 AR-1254-3

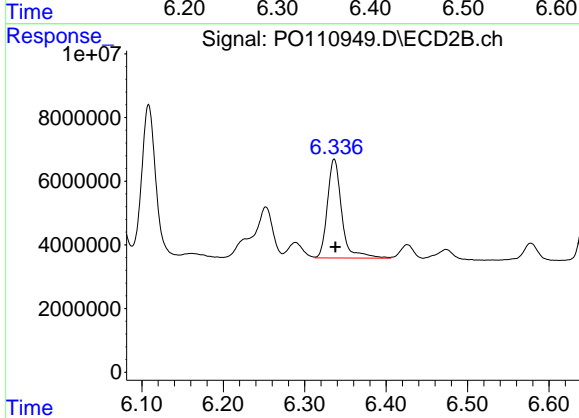
R.T.: 6.108 min
 Delta R.T.: -0.001 min
 Response: 57570812
 Conc: 172.26 ng/ml



#29 AR-1254-4

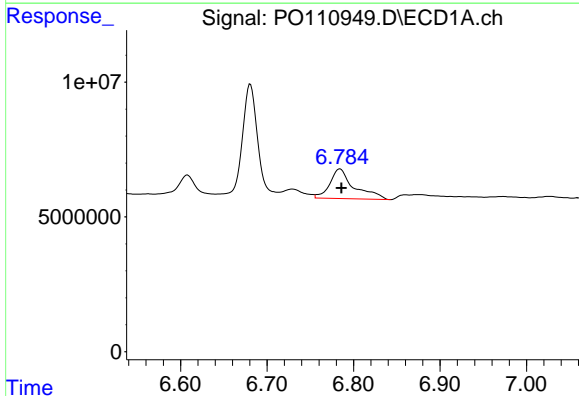
R.T.: 6.365 min
Delta R.T.: -0.002 min
Response: 56062759
Conc: 183.92 ng/ml

Instrument :
ECD_O
ClientSampleId :
AR1248CCC500



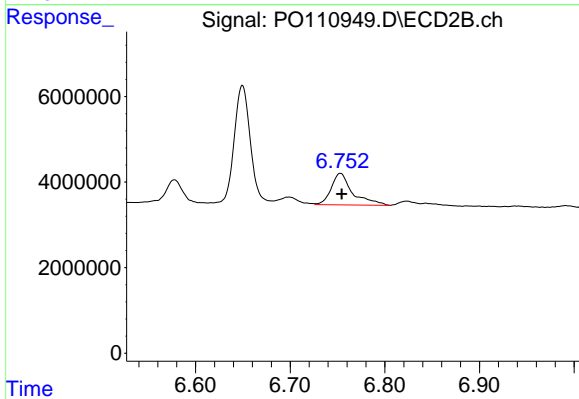
#29 AR-1254-4

R.T.: 6.336 min
Delta R.T.: -0.001 min
Response: 37836574
Conc: 194.87 ng/ml



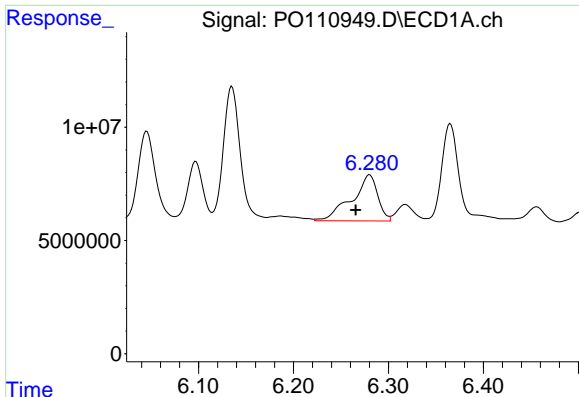
#30 AR-1254-5

R.T.: 6.784 min
Delta R.T.: -0.002 min
Response: 21445714
Conc: 50.83 ng/ml



#30 AR-1254-5

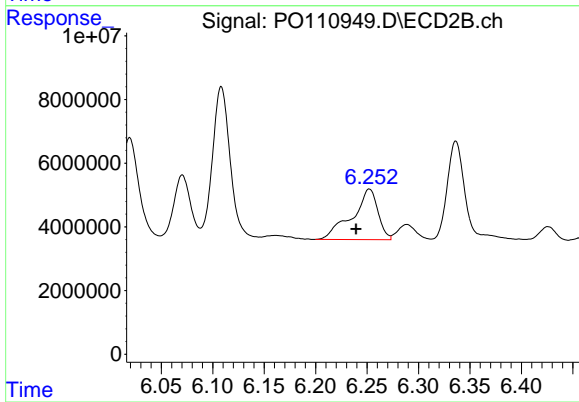
R.T.: 6.753 min
Delta R.T.: -0.001 min
Response: 11641413
Conc: 43.39 ng/ml



#31 AR-1260-1

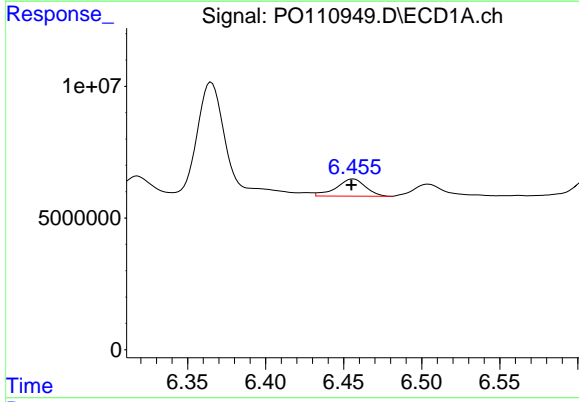
R.T.: 6.280 min
 Delta R.T.: 0.015 min
 Response: 38655862
 Conc: 116.22 ng/ml

Instrument :
 ECD_O
 ClientSampleId :
 AR1248CCC500



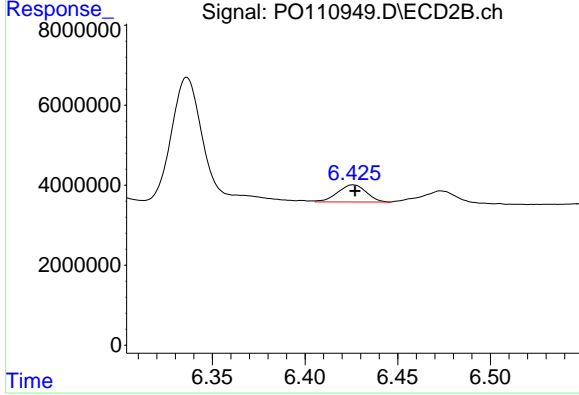
#31 AR-1260-1

R.T.: 6.252 min
 Delta R.T.: 0.013 min
 Response: 27750838
 Conc: 125.70 ng/ml



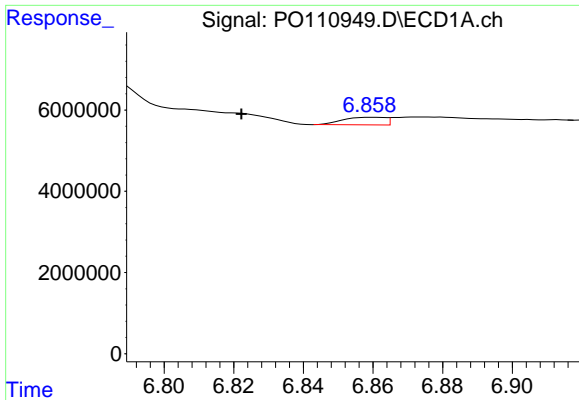
#32 AR-1260-2

R.T.: 6.456 min
 Delta R.T.: 0.001 min
 Response: 8519930
 Conc: 20.54 ng/ml



#32 AR-1260-2

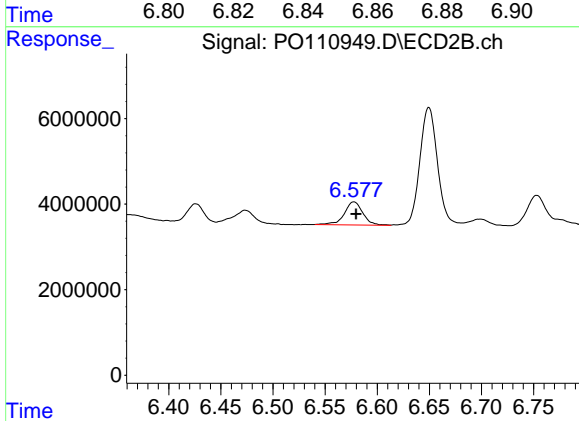
R.T.: 6.426 min
 Delta R.T.: 0.000 min
 Response: 4606617
 Conc: 17.91 ng/ml



#33 AR-1260-3

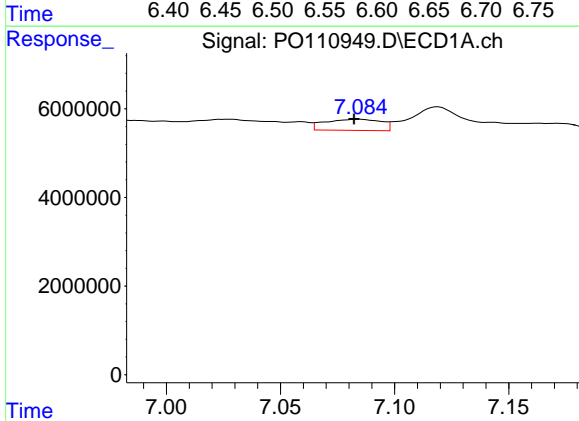
R.T.: 6.860 min
 Delta R.T.: 0.038 min
 Response: 1587070
 Conc: 4.51 ng/ml

Instrument :
 ECD_O
 ClientSampleId :
 AR1248CCC500



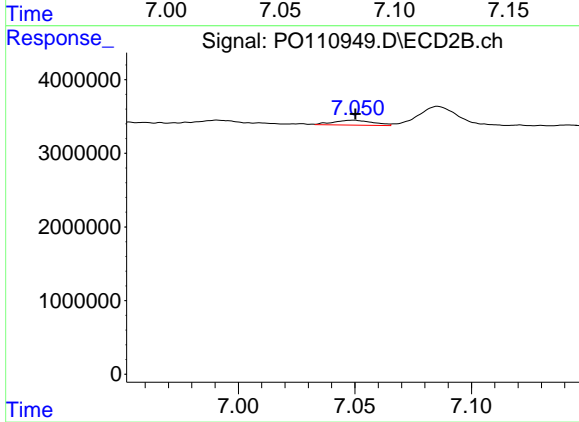
#33 AR-1260-3

R.T.: 6.578 min
 Delta R.T.: -0.002 min
 Response: 6635122
 Conc: 28.46 ng/ml



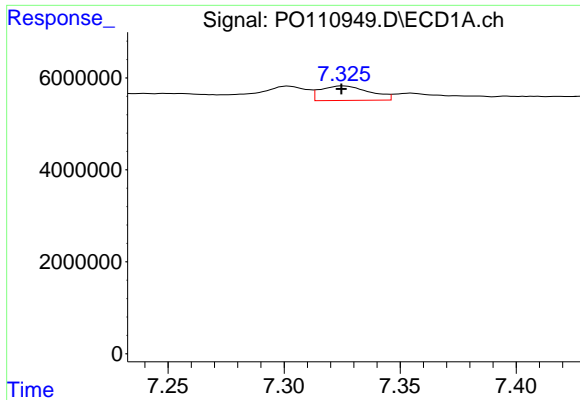
#34 AR-1260-4

R.T.: 7.084 min
 Delta R.T.: 0.002 min
 Response: 4319639
 Conc: 14.20 ng/ml



#34 AR-1260-4

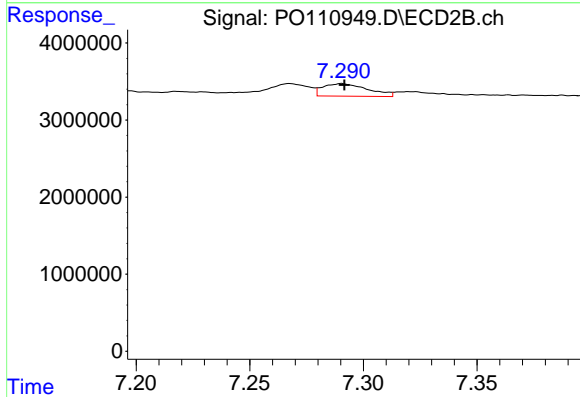
R.T.: 7.049 min
 Delta R.T.: 0.000 min
 Response: 795953
 Conc: 4.37 ng/ml



#35 AR-1260-5

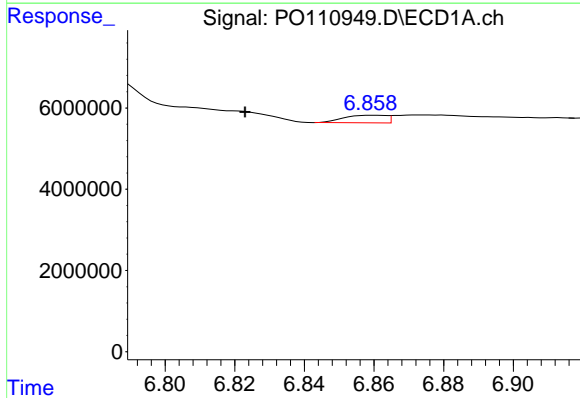
R.T.: 7.325 min
 Delta R.T.: 0.000 min
 Response: 4624451
 Conc: 6.30 ng/ml

Instrument :
 ECD_O
 ClientSampleId :
 AR1248CCC500



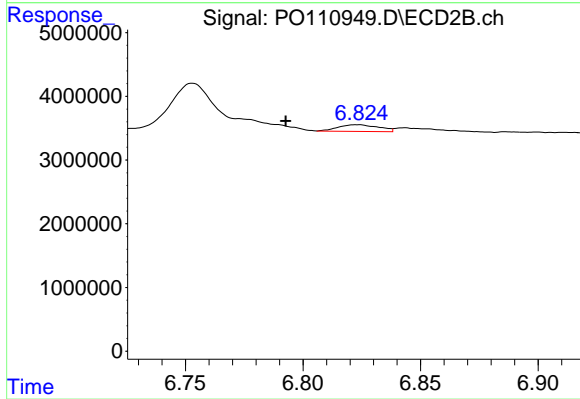
#35 AR-1260-5

R.T.: 7.290 min
 Delta R.T.: -0.001 min
 Response: 2246786
 Conc: 5.71 ng/ml



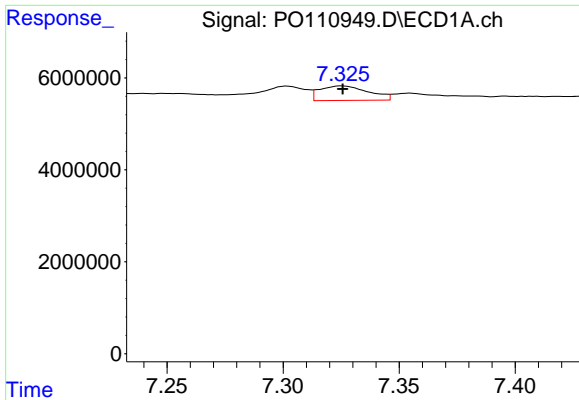
#36 AR-1262-1

R.T.: 6.860 min
 Delta R.T.: 0.037 min
 Response: 1587070
 Conc: 3.45 ng/ml



#36 AR-1262-1

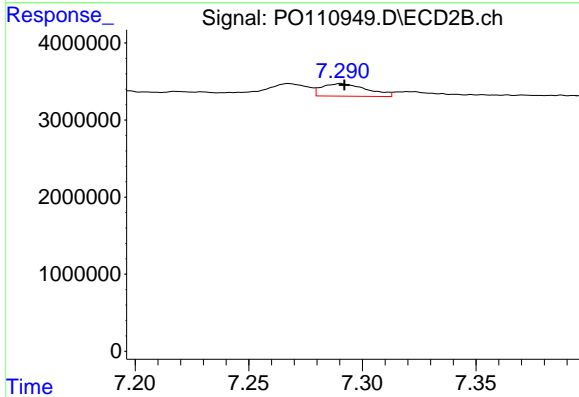
R.T.: 6.823 min
 Delta R.T.: 0.031 min
 Response: 1269289
 Conc: 4.49 ng/ml



#37 AR-1262-2

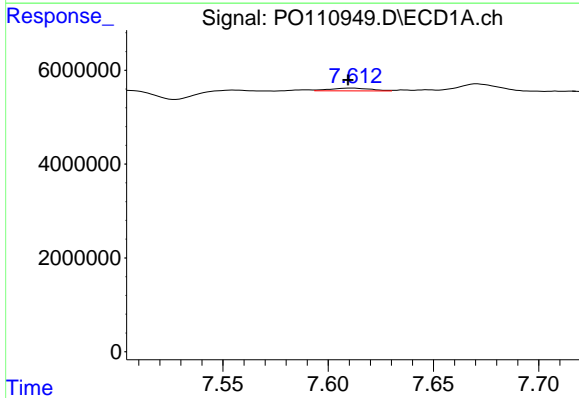
R.T.: 7.325 min
 Delta R.T.: 0.000 min
 Response: 4624451
 Conc: 5.88 ng/ml

Instrument :
 ECD_O
 ClientSampleId :
 AR1248CCC500



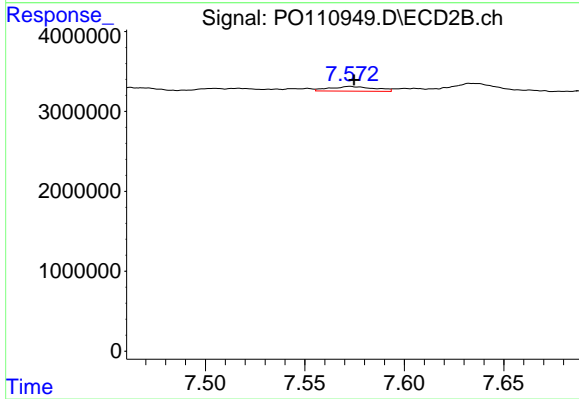
#37 AR-1262-2

R.T.: 7.290 min
 Delta R.T.: -0.002 min
 Response: 2246786
 Conc: 5.11 ng/ml



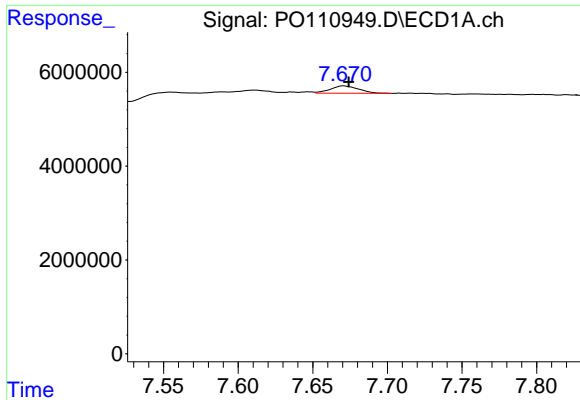
#38 AR-1262-3

R.T.: 7.612 min
 Delta R.T.: 0.002 min
 Response: 808341
 Conc: 2.42 ng/ml



#38 AR-1262-3

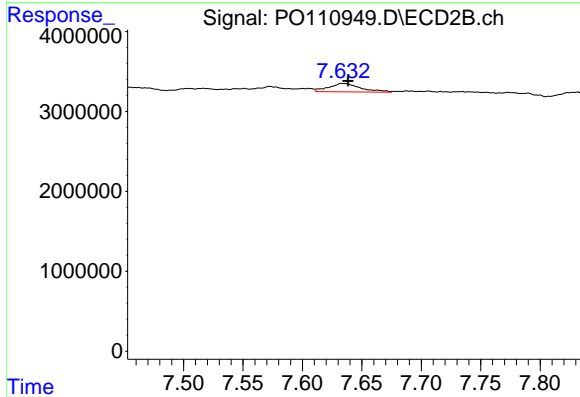
R.T.: 7.573 min
 Delta R.T.: -0.002 min
 Response: 913266
 Conc: 5.62 ng/ml



#39 AR-1262-4

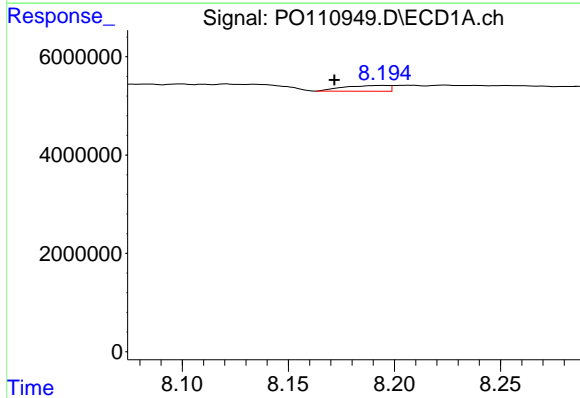
R.T.: 7.671 min
 Delta R.T.: -0.003 min
 Response: 2068245
 Conc: 3.58 ng/ml

Instrument :
 ECD_O
 ClientSampleId :
 AR1248CCC500



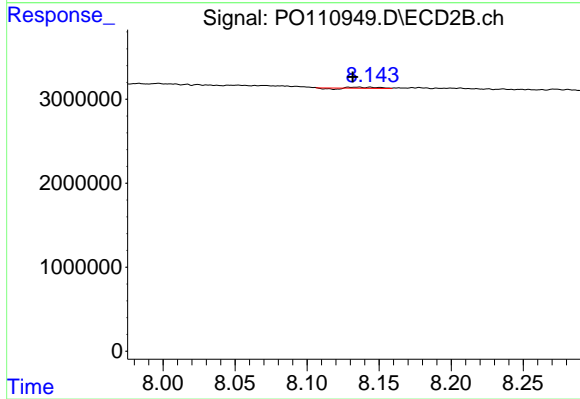
#39 AR-1262-4

R.T.: 7.634 min
 Delta R.T.: -0.005 min
 Response: 1994097
 Conc: 6.85 ng/ml



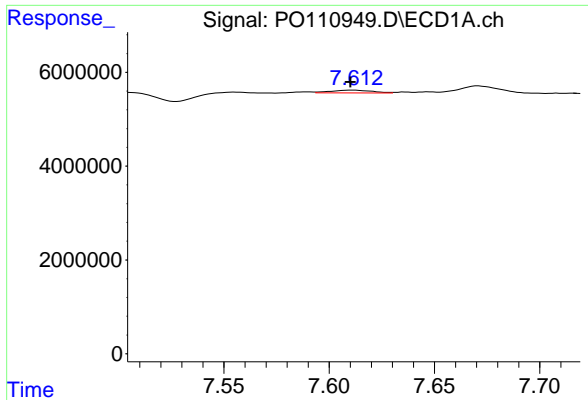
#40 AR-1262-5

R.T.: 8.195 min
 Delta R.T.: 0.023 min
 Response: 1729791
 Conc: 6.48 ng/ml



#40 AR-1262-5

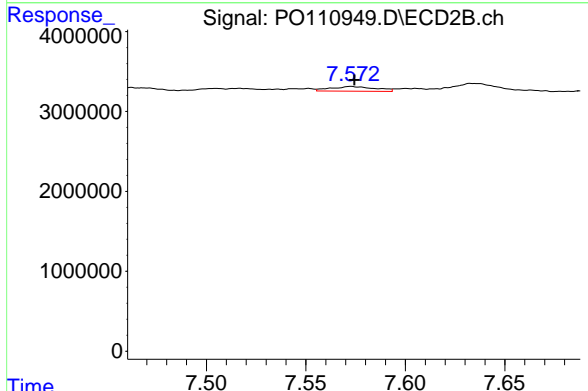
R.T.: 8.136 min
 Delta R.T.: 0.004 min
 Response: 124378
 Conc: 1.26 ng/ml



#41 AR-1268-1

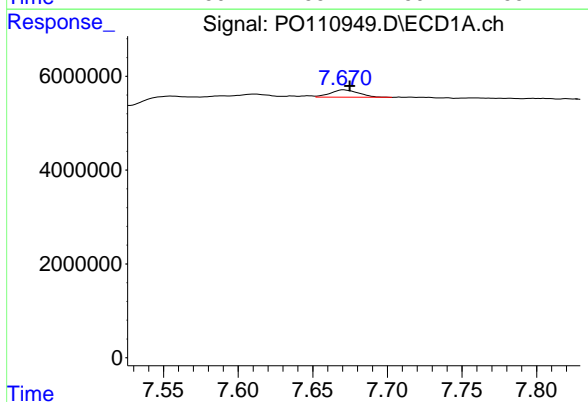
R.T.: 7.612 min
 Delta R.T.: 0.002 min
 Response: 808341
 Conc: 0.91 ng/ml

Instrument : ECD_O
 ClientSampleId : AR1248CCC500



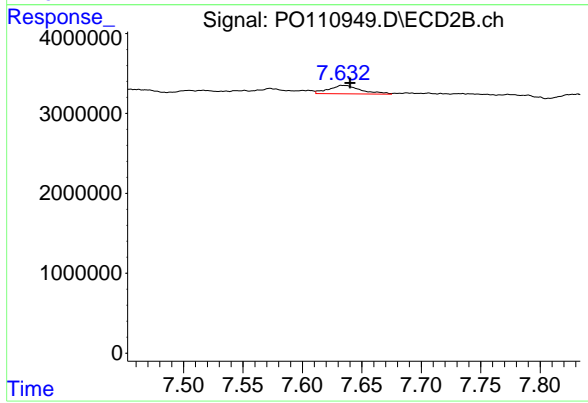
#41 AR-1268-1

R.T.: 7.573 min
 Delta R.T.: -0.002 min
 Response: 913266
 Conc: 2.12 ng/ml



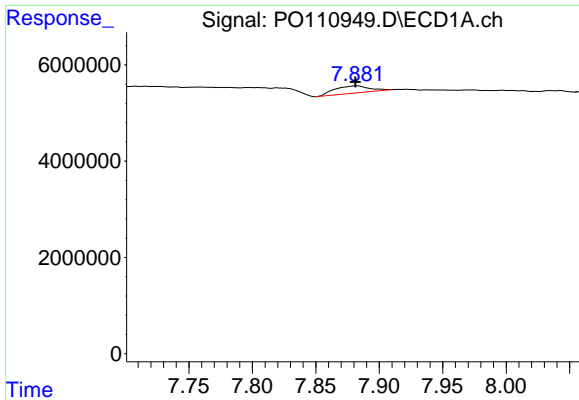
#42 AR-1268-2

R.T.: 7.671 min
 Delta R.T.: -0.004 min
 Response: 2068245
 Conc: 2.58 ng/ml



#42 AR-1268-2

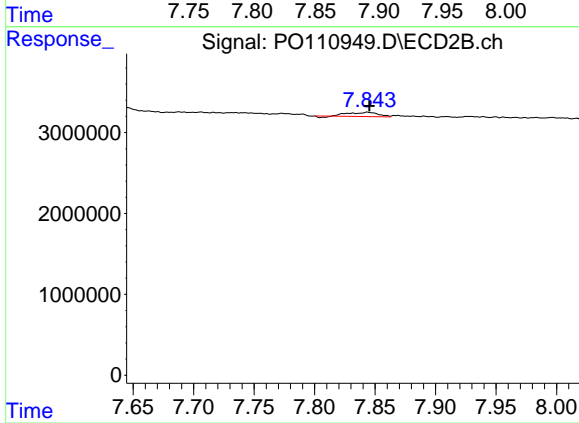
R.T.: 7.634 min
 Delta R.T.: -0.006 min
 Response: 1994097
 Conc: 5.19 ng/ml



#43 AR-1268-3

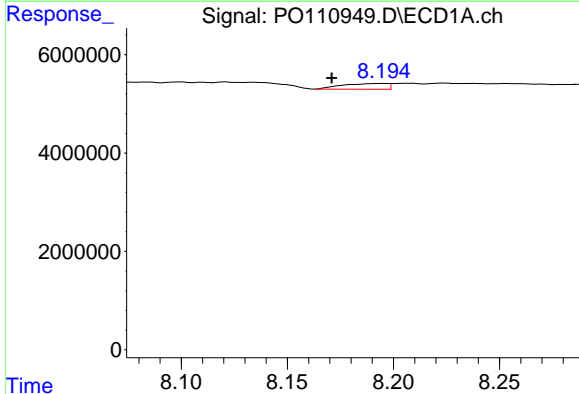
R.T.: 7.882 min
 Delta R.T.: 0.000 min
 Response: 2847731
 Conc: 4.15 ng/ml

Instrument :
 ECD_O
 ClientSampleId :
 AR1248CCC500



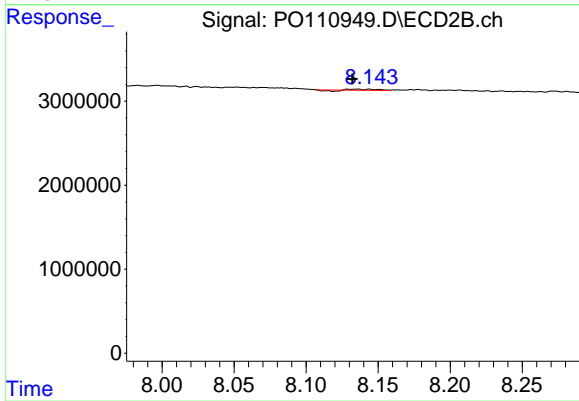
#43 AR-1268-3

R.T.: 7.844 min
 Delta R.T.: -0.001 min
 Response: 843370
 Conc: 2.97 ng/ml



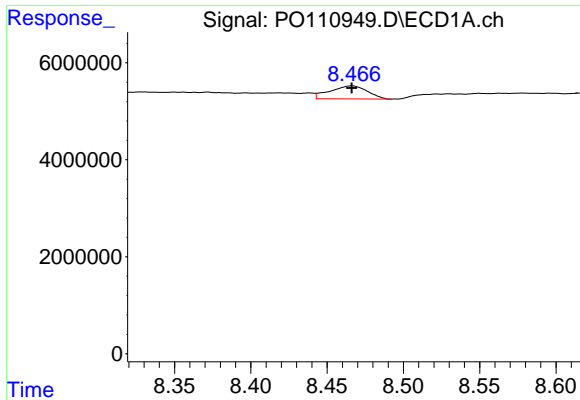
#44 AR-1268-4

R.T.: 8.195 min
 Delta R.T.: 0.024 min
 Response: 1729791
 Conc: 6.22 ng/ml



#44 AR-1268-4

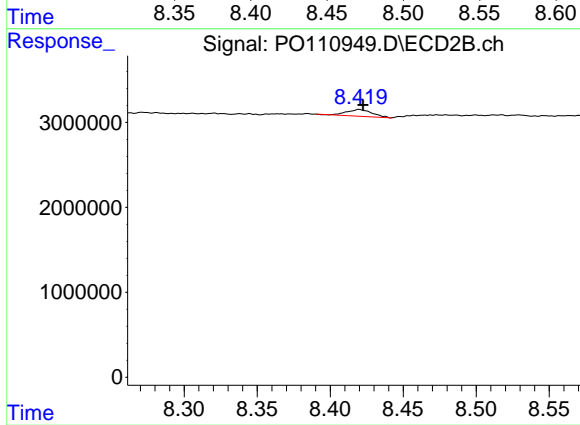
R.T.: 8.136 min
 Delta R.T.: 0.004 min
 Response: 124378
 Conc: 1.19 ng/ml



#45 AR-1268-5

R.T.: 8.466 min
Delta R.T.: 0.000 min
Response: 4600712
Conc: 2.25 ng/ml

Instrument :
ECD_O
ClientSampleId :
AR1248CCC500



#45 AR-1268-5

R.T.: 8.420 min
Delta R.T.: -0.003 min
Response: 945596
Conc: 1.56 ng/ml